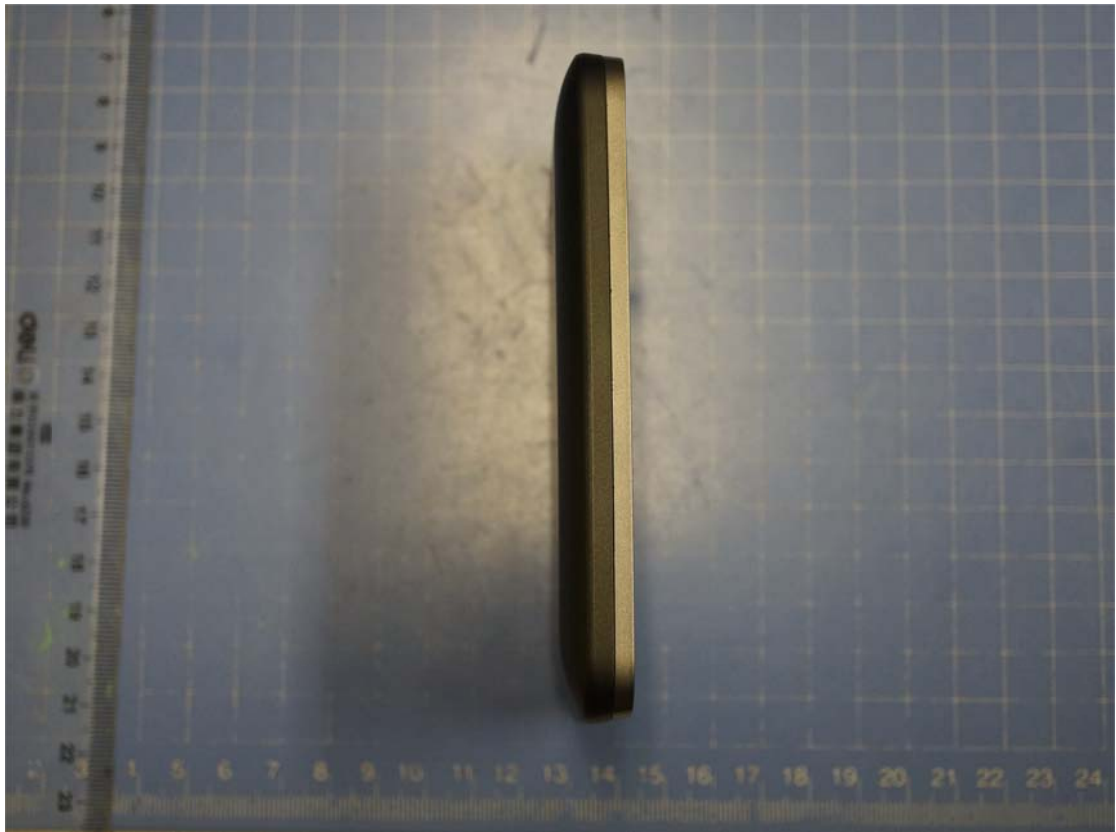
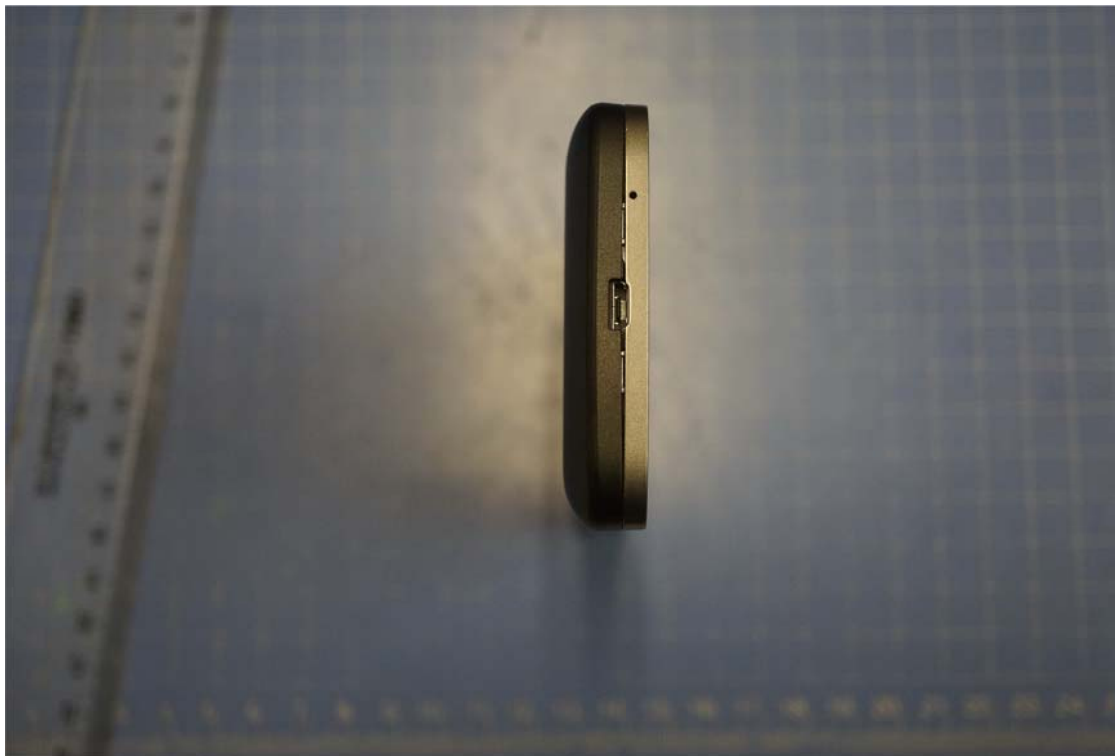


External Photos









ALCATEL  
onetouch

TLi020F2

3.8V 2000mAh(7.6Wh)  
Limited charge voltage:4.35V  
Manufactured Date:2013-12-11



**⚠ Cautions**

Do not disassemble.  
Do not short circuit.  
Do not dispose of in fire.  
Do not expose to high  
temperature(60°C/140°F).

**⚠ Attention**

Ne pas désassembler.  
Ne pas court-circuiter.  
Ne pas jeter au feu.  
Ne pas exposer à une température  
supérieure à 60°C/140°F.



S/N: B2000013C2Y000NC ICS01



AE3

13720CHR04







