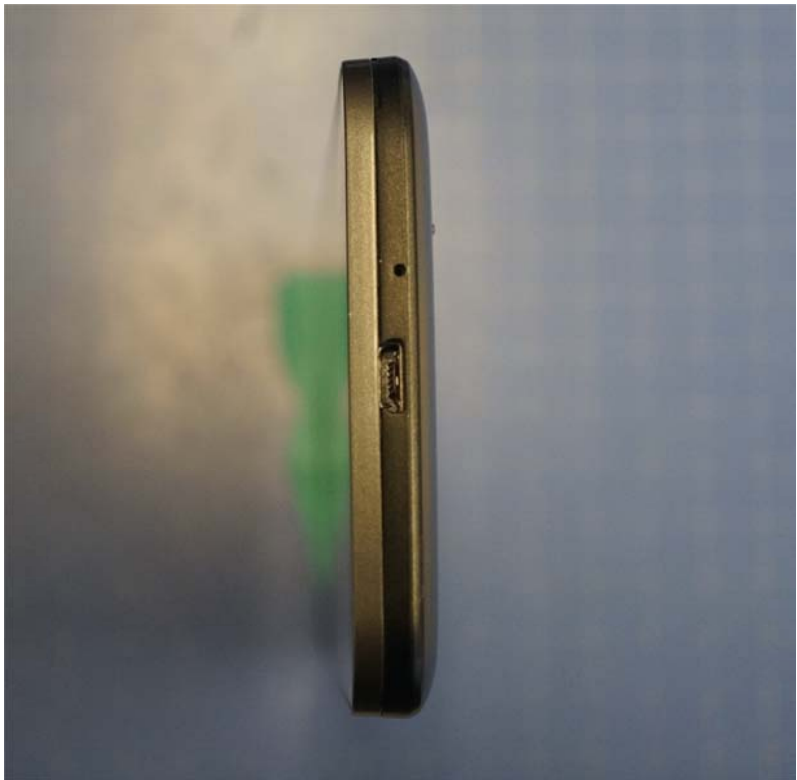


External Photos







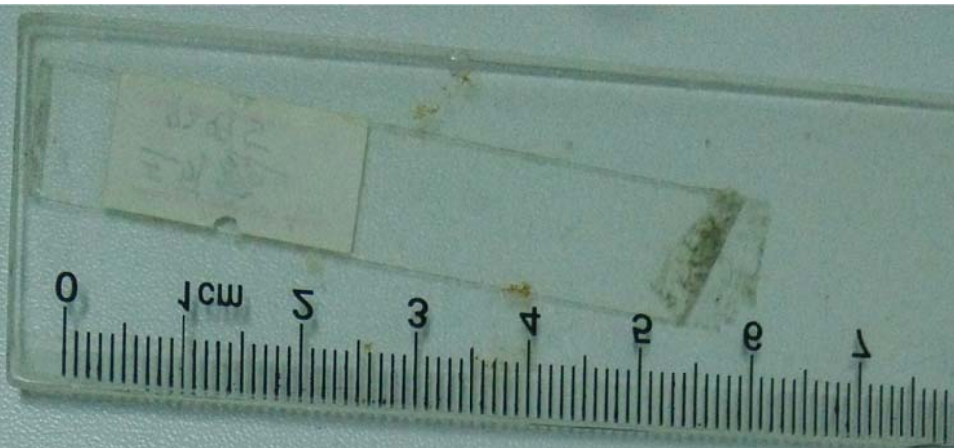




AE3

13720CHR04





TLp025A2

ALCATEL
onetouch

类型:3.8V 锂聚合物电池
额定容量:2500mAh/9.5Wh
充电限制电压:4.35V
执行标准:GB/T 18287-2013

Li-Ion Polymer Battery/Batterie
3.8V 500mAh(9.5Wh)
Min. for charge voltage: 4.35V
Red wire "+"/black wire "-"

⚠ Cautions
Do not disassemble.
Do not short circuit.
Do not dispose of in fire.
Do not expose to high temperature(60°C/140°F)

⚠ Attention
Ne pas désassembler.
Ne pas court-circuiter.
Ne pas jeter au feu.
Ne pas exposer à une température élevée à 60°C/140°F.

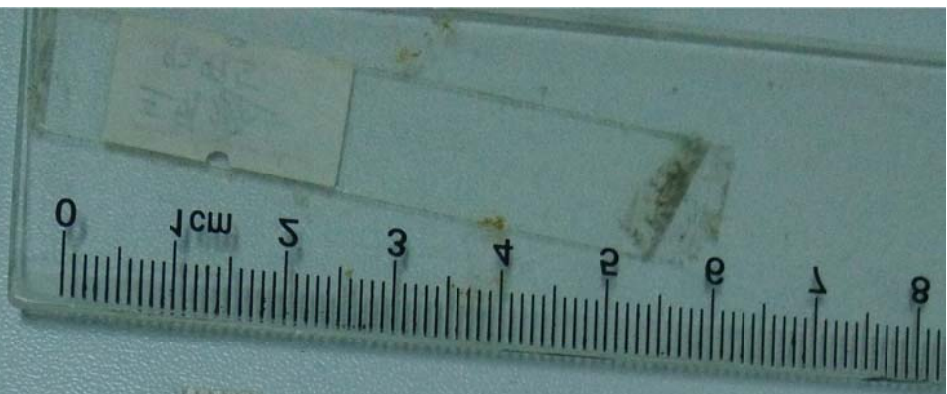
注意：
防止电池短路;勿在高温区使用或存放;勿自行拆开电池;
无记忆效应,充电前不需放电;使用专用充电器进行充电。
⚠ 警告：投入火中或严重放电可能爆炸！

1ICP5/55/73
Made by SCUD
Made in China

PG C

MANUFACTURED DATE: 2014-12-15

3/N: C2500028C2YHV18D ICS01



- +
LGND43A4355
M2622109018
T1192L8L1

MANUFACTURED DATE: 2014-12-15 1CS01
C2500028C2 2500mAh