

ALCATEL
onetouch.
Pop2⁽⁴⁵⁾

5042A

Quick Start Guide

For more information about how to use your cellphone, please visit www.alcatelonetouch.com to download the complete user manual. From the website, you can consult the FAQ, perform software upgrades, etc.

ALCATEL
onetouch®

English - CJB6150ALAAA

Table of contents

1	Your mobile	1
2	Text input	12
3	Phone call	13
4	People	15
5	Messaging.....	16
6	Email	17
7	Getting connected.....	18
8	Find my location using GPS satellites	20
9	Data backup	21
10	Factory data reset	22
11	Applications & Internal storage	22
12	Making the most of your phone.....	23
	Safety and use.....	25
	General information	34
	TCT Mobile (US), Inc. Warranty	35
	Troubleshooting.....	37



www.sar-tick.com

This product meets applicable national SAR limits of 2.0 W/kg. The specific maximum SAR values can be found on page 30 of this user guide.

When carrying the product or using it while worn on your body, either use an approved accessory such as a holster or otherwise maintain a distance of 1.0 cm from the body to ensure compliance with RF exposure requirements. Note that the product may be transmitting even if you are not making a phone call.

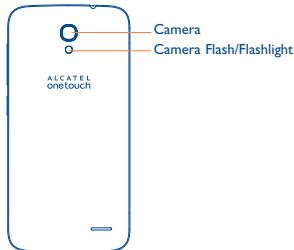
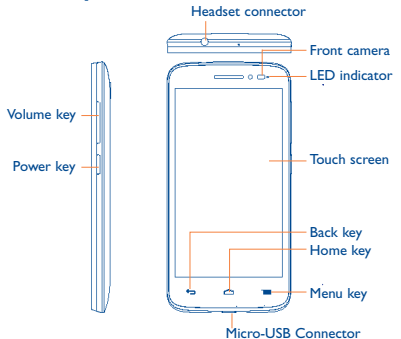
PROTECT YOUR HEARING

To prevent possible hearing damage, do not listen at high volume levels for long periods. Exercise caution when holding your device near your ear while the loudspeaker is in use.



Your mobile

1.1 Keys and connectors





Menu key

- Touch to access settings options.
- Touch and hold to open a list of thumbnail images of apps you've worked with recently.



Home key

- From any application or screen, touch to return to the Home screen.



Back key

- Touch to go back to the previous screen, or to close a dialog box, options menu, the notification panel, etc.

These keys are visible when the screen lights up.



Power key

- Press: Lock the screen/Light up the screen.
- Press and hold: Show the pop-up menu to select from Power off/Restart/Airplane mode/Quick start.
- Press the **Power** key for more than 9s to restart.
- Press the **Power** key and **Volume up** key to reset.
- Press the **Power** key and **Volume down** key to capture a screenshot.



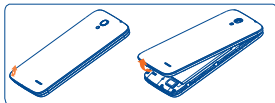
Volume Keys

- In call mode, adjusts the earpiece or headset volume.
- In Music/Video/Streaming mode, adjusts the media volume.
- In general mode, adjusts the ringtone volume.
- Mutes the ringtone of an incoming call.

1.2 Getting started

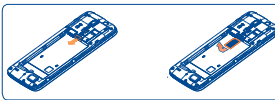
1.2.1 Set-up

Removing or installing the back cover



Inserting or removing the SIM card

You must insert your SIM card to make phone calls. Please power off your phone before inserting or removing the SIM card.

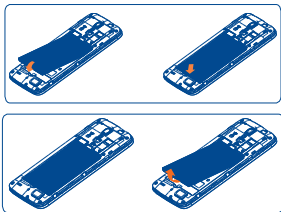


To install, place the SIM card with the chip facing downwards into the housing and slide it into its slot. Make sure that it is correctly inserted. To remove the card, press and slide it out.



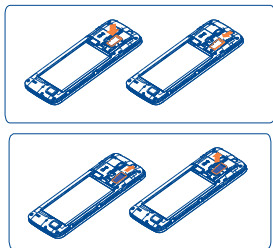
Your phone only supports micro-SIM cards. Do not attempt to insert other SIM types like mini and nano cards; otherwise this may cause damage to your phone.

Installing or removing the battery



- To install, insert and click the battery into place, then close the phone cover.
- To remove the battery, first power the phone off. Then unclip the cover and remove the battery.

Installing and removing the microSD card

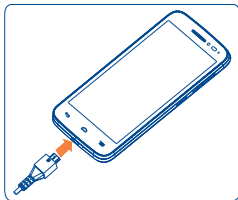


Insert the microSD card with the golden contacts facing downwards into the slot. To remove the microSD card, gently press and slide it out.



To avoid data loss and SD card damage, before removing the SD card, please ensure that the SD card is unmounted (**Settings**\Storage\Unmount SD card).

Charging the battery



Connect the battery charger to your phone and wall socket respectively, the LED indicator will light while charging.



To reduce power consumption and energy waste, when the battery is fully charged, disconnect your charger; switch off Wi-Fi, GPS, Bluetooth or background-running applications when not in use; reduce the backlight time, etc.

1.2.2 Power on your phone

Hold down the **Power** key until the phone powers on. It will take a few seconds before the screen lights up.

Set up your phone for the first time

The first time you power on the phone, you should set the following options: language, Input method, date & time, etc.

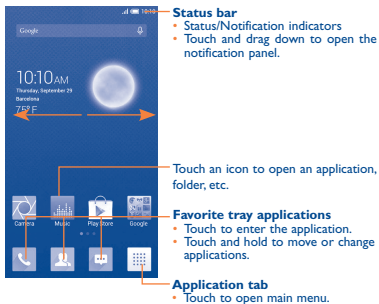
Even if no SIM card is installed, your phone will still power on and you will be able to connect to a Wi-Fi network, sign into your Google account and use some of the phone's features.

1.2.3 Power off your phone

Hold down the **Power** key from the Home screen until the phone options appear; select **Power off**.

1.3 Home screen

You can move all of items (applications, shortcuts, folders and widgets) you use most frequently to your Home screen for quick access. Touch the **Home** key to switch to the Home screen.



The Home screen is provided in an extended format to allow more space for adding applications, shortcuts etc. Slide the Home screen horizontally left and right to get a complete view.

1.3.1 Using the touchscreen

Touch

To access an application, touch it with your finger.

Touch and Hold

Touch and hold the item to enter the available options.

Drag

Place your finger on the screen to drag an object to another location.

Slide/Swipe

Slide the screen up and down to scroll through the applications, images, web pages, etc.

The device also supports one finger zoom (Messaging, Browser, Email, Camera and Gallery) by double tapping the screen then sliding with one finger to zoom in/out).

Flick

Similar to swiping, but flicking makes it move quicker.

Pinch/Spread

Place your fingers of one hand on the screen surface and draw them apart or together to scale an element on the screen.

Rotate

Automatically change the screen orientation from portrait to landscape by turning the phone sideways to have a better view.

1.3.2 Status bar

From the status bar, you can view both phone status (to the right side) and notification information (to the left side).