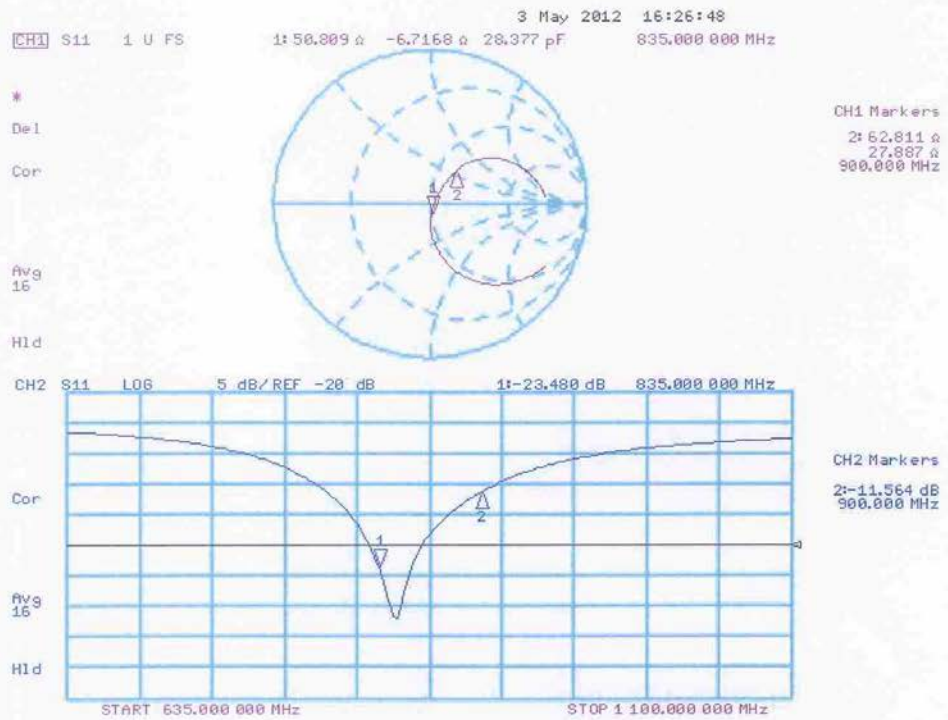


### Impedance Measurement Plot for Head TSL



**DASY5 Validation Report for Body TSL**

Date: 03.05.2012

Test Laboratory: SPEAG, Zurich, Switzerland

**DUT: Dipole 835 MHz; Type: D835V2; Serial: D835V2 - SN: 443**

Communication System: CW; Frequency: 835 MHz

Medium parameters used:  $f = 835 \text{ MHz}$ ;  $\sigma = 1.01 \text{ mho/m}$ ;  $\epsilon_r = 54.5$ ;  $\rho = 1000 \text{ kg/m}^3$

Phantom section: Flat Section

Measurement Standard: DASY5 (IEEE/IEC/ANSI C63.19-2007)

DASY52 Configuration:

- Probe: ES3DV3 - SN3205; ConvF(6.02, 6.02, 6.02); Calibrated: 30.12.2011;
- Sensor-Surface: 3mm (Mechanical Surface Detection)
- Electronics: DAE4 Sn601; Calibrated: 04.07.2011
- Phantom: Flat Phantom 4.9L; Type: QD000P49AA; Serial: 1001
- DASY52 52.8.1(838); SEMCAD X 14.6.5(6469)

**Dipole Calibration for Body Tissue/Pin=250 mW, d=15mm/Zoom Scan (7x7x7)/Cube 0:**

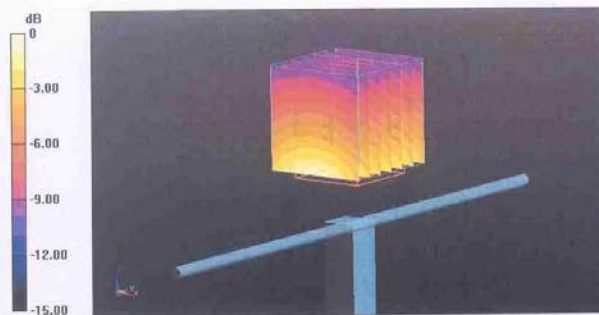
Measurement grid:  $dx=5\text{mm}$ ,  $dy=5\text{mm}$ ,  $dz=5\text{mm}$

Reference Value = 54.758 V/m; Power Drift = 0.01 dB

Peak SAR (extrapolated) = 3.514 mW/g

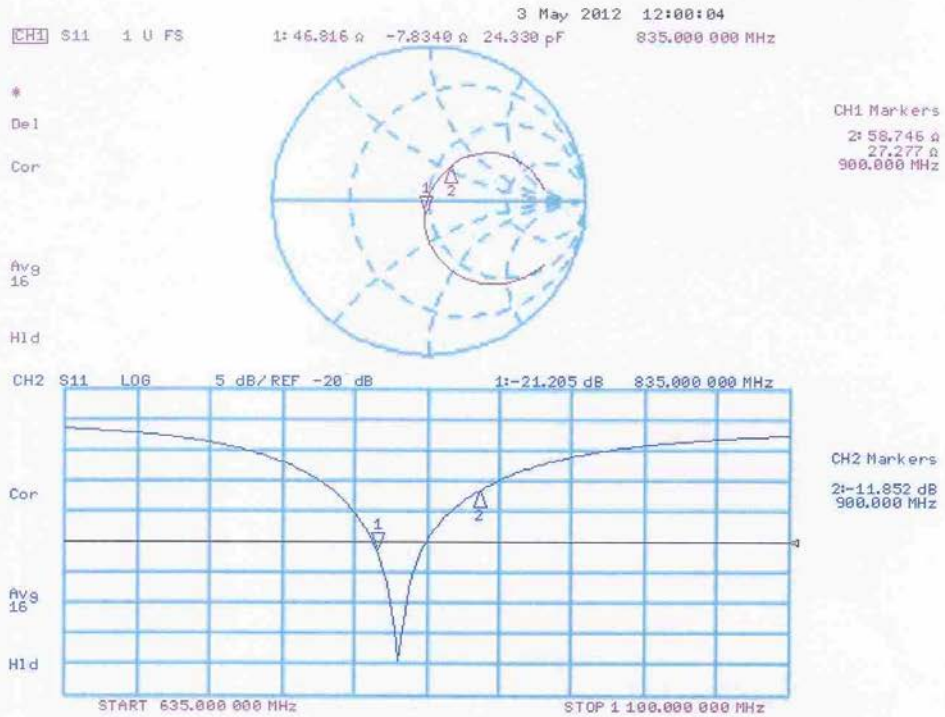
**SAR(1 g) = 2.42 mW/g; SAR(10 g) = 1.59 mW/g**

Maximum value of SAR (measured) = 2.82 mW/g



0 dB = 2.82 mW/g = 9.00 dB mW/g

### Impedance Measurement Plot for Body TSL



### 1900 MHz Dipole Calibration Certificate

**Calibration Laboratory of  
Schmid & Partner  
Engineering AG**  
Zeughausstrasse 43, 8004 Zurich, Switzerland



**S** Schweizerischer Kalibrierdienst  
**S** Service suisse d'étalonnage  
**C** Servizio svizzero di taratura  
**S** Swiss Calibration Service

Accredited by the Swiss Accreditation Service (SAS)  
The Swiss Accreditation Service is one of the signatories to the EA  
Multilateral Agreement for the recognition of calibration certificates

Accreditation No.: **SCS 108**

Client **TMC Beijing**

Certificate No: **D1900V2-541\_May12**

## CALIBRATION CERTIFICATE

Object: **D1900V2 - SN: 541**

Calibration procedure(s): **QA CAL-05.v8  
Calibration procedure for dipole validation kits above 700 MHz**

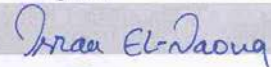

Calibration date: **May 09, 2012**

This calibration certificate documents the traceability to national standards, which realize the physical units of measurements (SI).  
The measurements and the uncertainties with confidence probability are given on the following pages and are part of the certificate.

All calibrations have been conducted in the closed laboratory facility: environment temperature (22 ± 3)°C and humidity < 70%.

Calibration Equipment used (M&TE critical for calibration)

Primary Standards	ID #	Cal Date (Certificate No.)	Scheduled Calibration
Power meter EPM-442A	GB37480704	05-Oct-11 (No. 217-01451)	Oct-12
Power sensor HP 8481A	US37292783	05-Oct-11 (No. 217-01451)	Oct-12
Reference 20 dB Attenuator	SN: 5058 (20k)	27-Mar-12 (No. 217-01530)	Apr-13
Type-N mismatch combination	SN: 5047.2 / 06327	27-Mar-12 (No. 217-01533)	Apr-13
Reference Probe ES3DV3	SN: 3205	30-Dec-11 (No. ES3-3205_Dec11)	Dec-12
DAE4	SN: 601	04-Jul-11 (No. DAE4-601_Jul11)	Jul-12
Secondary Standards	ID #	Check Date (in house)	Scheduled Check
Power sensor HP 8481A	MY41092317	18-Oct-02 (in house check Oct-11)	In house check: Oct-13
RF generator R&S SMT-06	100005	04-Aug-99 (in house check Oct-11)	In house check: Oct-13
Network Analyzer HP 8753E	US37390585 S4206	18-Oct-01 (in house check Oct-11)	In house check: Oct-12

	Name	Function	Signature
Calibrated by:	Israe El-Naouq	Laboratory Technician	
Approved by:	Katja Pokovic	Technical Manager	

Issued: May 9, 2012

This calibration certificate shall not be reproduced except in full without written approval of the laboratory.

**Calibration Laboratory of**  
Schmid & Partner  
Engineering AG  
Zeughausstrasse 43, 8004 Zurich, Switzerland



**S** Schweizerischer Kalibrierdienst  
**C** Service suisse d'étalonnage  
**S** Servizio svizzero di taratura  
**S** Swiss Calibration Service

Accredited by the Swiss Accreditation Service (SAS)  
The Swiss Accreditation Service is one of the signatories to the EA  
Multilateral Agreement for the recognition of calibration certificates

Accreditation No.: **SCS 108**

**Glossary:**

TSL	tissue simulating liquid
ConvF	sensitivity in TSL / NORM x,y,z
N/A	not applicable or not measured

**Calibration is Performed According to the Following Standards:**

- a) IEEE Std 1528-2003, "IEEE Recommended Practice for Determining the Peak Spatial-Averaged Specific Absorption Rate (SAR) in the Human Head from Wireless Communications Devices: Measurement Techniques", December 2003
- b) IEC 62209-1, "Procedure to measure the Specific Absorption Rate (SAR) for hand-held devices used in close proximity to the ear (frequency range of 300 MHz to 3 GHz)", February 2005
- c) Federal Communications Commission Office of Engineering & Technology (FCC OET), "Evaluating Compliance with FCC Guidelines for Human Exposure to Radiofrequency Electromagnetic Fields; Additional Information for Evaluating Compliance of Mobile and Portable Devices with FCC Limits for Human Exposure to Radiofrequency Emissions", Supplement C (Edition 01-01) to Bulletin 65

**Additional Documentation:**

- d) DASY4/5 System Handbook

**Methods Applied and Interpretation of Parameters:**

- *Measurement Conditions:* Further details are available from the Validation Report at the end of the certificate. All figures stated in the certificate are valid at the frequency indicated.
- *Antenna Parameters with TSL:* The dipole is mounted with the spacer to position its feed point exactly below the center marking of the flat phantom section, with the arms oriented parallel to the body axis.
- *Feed Point Impedance and Return Loss:* These parameters are measured with the dipole positioned under the liquid filled phantom. The impedance stated is transformed from the measurement at the SMA connector to the feed point. The Return Loss ensures low reflected power. No uncertainty required.
- *Electrical Delay:* One-way delay between the SMA connector and the antenna feed point. No uncertainty required.
- *SAR measured:* SAR measured at the stated antenna input power.
- *SAR normalized:* SAR as measured, normalized to an input power of 1 W at the antenna connector.
- *SAR for nominal TSL parameters:* The measured TSL parameters are used to calculate the nominal SAR result.

The reported uncertainty of measurement is stated as the standard uncertainty of measurement multiplied by the coverage factor  $k=2$ , which for a normal distribution corresponds to a coverage probability of approximately 95%.

### Measurement Conditions

DASY system configuration, as far as not given on page 1.

DASY Version	DASY5	V52.8.1
Extrapolation	Advanced Extrapolation	
Phantom	Modular Flat Phantom	
Distance Dipole Center - TSL	10 mm	with Spacer
Zoom Scan Resolution	dx, dy, dz = 5 mm	
Frequency	1900 MHz ± 1 MHz	

### Head TSL parameters

The following parameters and calculations were applied.

	Temperature	Permittivity	Conductivity
Nominal Head TSL parameters	22.0 °C	40.0	1.40 mho/m
Measured Head TSL parameters	(22.0 ± 0.2) °C	40.5 ± 6 %	1.37 mho/m ± 6 %
Head TSL temperature change during test	< 0.5 °C	----	----

### SAR result with Head TSL

SAR averaged over 1 cm <sup>3</sup> (1 g) of Head TSL	Condition	
SAR measured	250 mW input power	9.62 mW / g
SAR for nominal Head TSL parameters	normalized to 1W	<b>39.1 mW / g ± 17.0 % (k=2)</b>

SAR averaged over 10 cm <sup>3</sup> (10 g) of Head TSL	condition	
SAR measured	250 mW input power	5.11 mW / g
SAR for nominal Head TSL parameters	normalized to 1W	<b>20.6 mW / g ± 16.5 % (k=2)</b>

### Body TSL parameters

The following parameters and calculations were applied.

	Temperature	Permittivity	Conductivity
Nominal Body TSL parameters	22.0 °C	53.3	1.52 mho/m
Measured Body TSL parameters	(22.0 ± 0.2) °C	52.9 ± 6 %	1.52 mho/m ± 6 %
Body TSL temperature change during test	< 0.5 °C	----	----

### SAR result with Body TSL

SAR averaged over 1 cm <sup>3</sup> (1 g) of Body TSL	Condition	
SAR measured	250 mW input power	10.0 mW / g
SAR for nominal Body TSL parameters	normalized to 1W	<b>39.9 mW / g ± 17.0 % (k=2)</b>

SAR averaged over 10 cm <sup>3</sup> (10 g) of Body TSL	condition	
SAR measured	250 mW input power	5.33 mW / g
SAR for nominal Body TSL parameters	normalized to 1W	<b>21.3 mW / g ± 16.5 % (k=2)</b>

## Appendix

### Antenna Parameters with Head TSL

Impedance, transformed to feed point	$52.6 \Omega + 6.2 j\Omega$
Return Loss	- 23.7 dB

### Antenna Parameters with Body TSL

Impedance, transformed to feed point	$48.6 \Omega + 6.9 j\Omega$
Return Loss	- 23.0 dB

### General Antenna Parameters and Design

Electrical Delay (one direction)	1.197 ns
----------------------------------	----------

After long term use with 100W radiated power, only a slight warming of the dipole near the feedpoint can be measured.

The dipole is made of standard semirigid coaxial cable. The center conductor of the feeding line is directly connected to the second arm of the dipole. The antenna is therefore short-circuited for DC-signals. On some of the dipoles, small end caps are added to the dipole arms in order to improve matching when loaded according to the position as explained in the "Measurement Conditions" paragraph. The SAR data are not affected by this change. The overall dipole length is still according to the Standard.

No excessive force must be applied to the dipole arms, because they might bend or the soldered connections near the feedpoint may be damaged.

### Additional EUT Data

Manufactured by	SPEAG
Manufactured on	July 26, 2001

### DASY5 Validation Report for Head TSL

Date: 09.05.2012

Test Laboratory: SPEAG, Zurich, Switzerland

**DUT: Dipole 1900 MHz; Type: D1900V2; Serial: D1900V2 - SN: 541**

Communication System: CW; Frequency: 1900 MHz

Medium parameters used:  $f = 1900 \text{ MHz}$ ;  $\sigma = 1.37 \text{ mho/m}$ ;  $\epsilon_r = 40.5$ ;  $\rho = 1000 \text{ kg/m}^3$

Phantom section: Flat Section

Measurement Standard: DASY5 (IEEE/IEC/ANSI C63.19-2007)

DASY52 Configuration:

- Probe: ES3DV3 - SN3205; ConvF(5.01, 5.01, 5.01); Calibrated: 30.12.2011;
- Sensor-Surface: 3mm (Mechanical Surface Detection)
- Electronics: DAE4 Sn601; Calibrated: 04.07.2011
- Phantom: Flat Phantom 5.0 (front); Type: QD000P50AA; Serial: 1001
- DASY52 52.8.1(838); SEMCAD X 14.6.5(6469)

#### Dipole Calibration for Head Tissue/Pin=250 mW, d=10mm/Zoom Scan (7x7x7)/Cube 0:

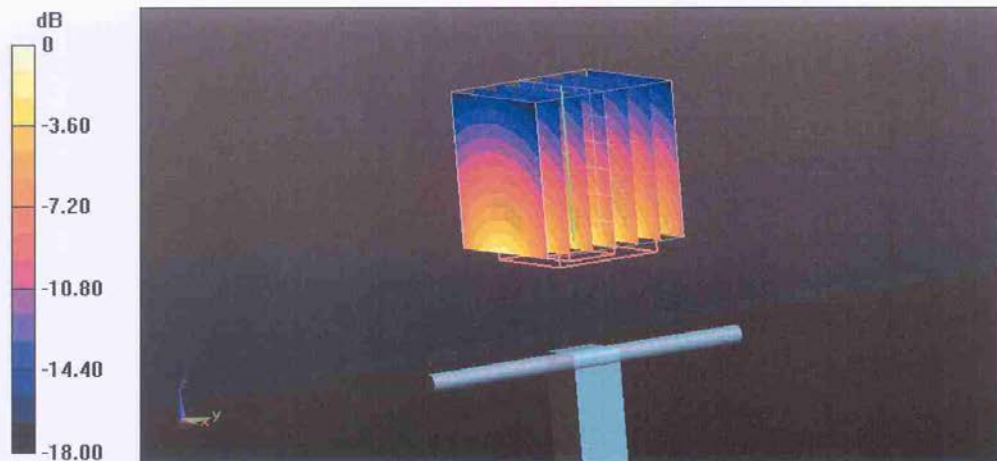
Measurement grid:  $dx=5\text{mm}$ ,  $dy=5\text{mm}$ ,  $dz=5\text{mm}$

Reference Value = 96.763 V/m; Power Drift = 0.06 dB

Peak SAR (extrapolated) = 17.071 mW/g

**SAR(1 g) = 9.62 mW/g; SAR(10 g) = 5.11 mW/g**

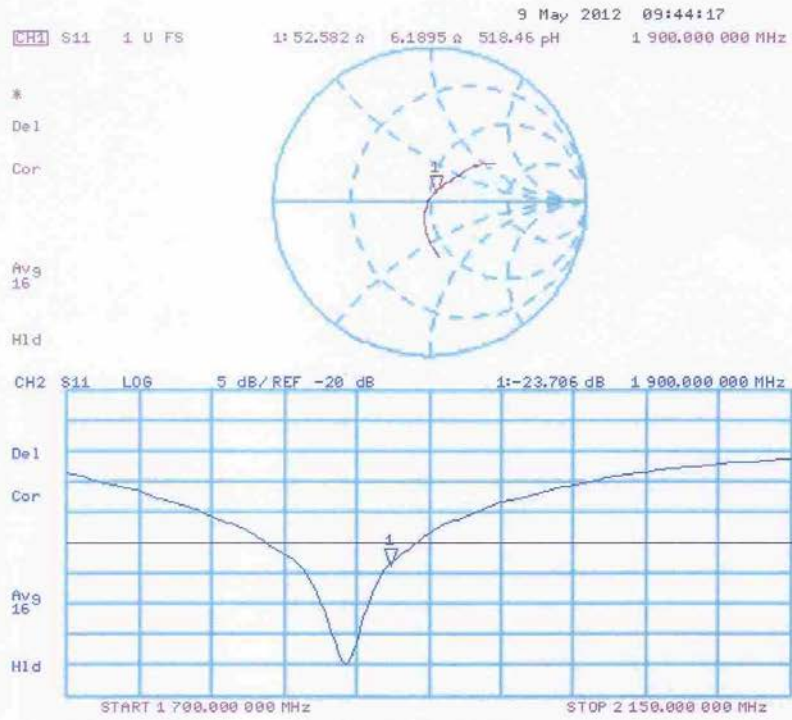
Maximum value of SAR (measured) = 12.0 mW/g



0 dB = 12.0 mW/g = 21.58 dB mW/g



### Impedance Measurement Plot for Head TSL



**DASY5 Validation Report for Body TSL**

Date: 04.05.2012

Test Laboratory: SPEAG, Zurich, Switzerland

**DUT: Dipole 1900 MHz; Type: D1900V2; Serial: D1900V2 - SN: 541**

Communication System: CW; Frequency: 1900 MHz

Medium parameters used:  $f = 1900$  MHz;  $\sigma = 1.52$  mho/m;  $\epsilon_r = 52.9$ ;  $\rho = 1000$  kg/m<sup>3</sup>

Phantom section: Flat Section

Measurement Standard: DASY5 (IEEE/IEC/ANSI C63.19-2007)

DASY52 Configuration:

- Probe: ES3DV3 - SN3205; ConvF(4.62, 4.62, 4.62); Calibrated: 30.12.2011;
- Sensor-Surface: 3mm (Mechanical Surface Detection)
- Electronics: DAE4 Sn601; Calibrated: 04.07.2011
- Phantom: Flat Phantom 5.0 (back); Type: QD000P50AA; Serial: 1002
- DASY52 52.8.1(838); SEMCAD X 14.6.5(6469)

**Dipole Calibration for Body Tissue/Pin=250 mW, d=10mm/Zoom Scan (7x7x7)/Cube 0:**

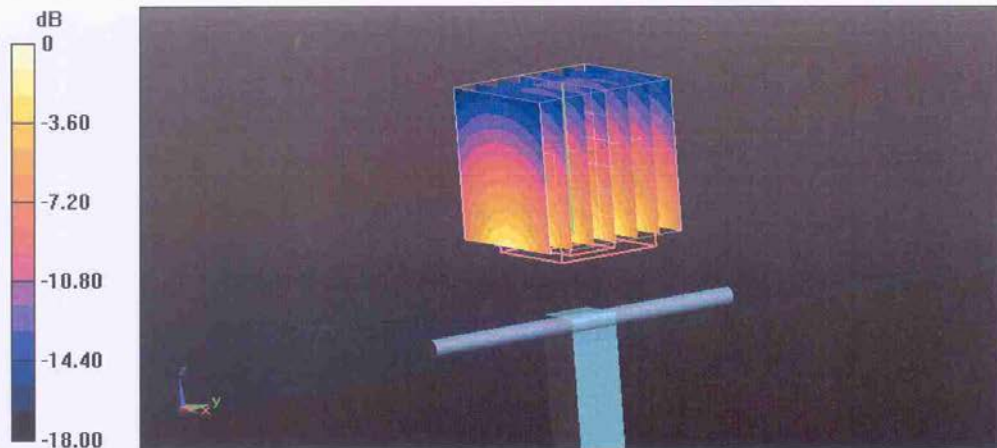
Measurement grid: dx=5mm, dy=5mm, dz=5mm

Reference Value = 95.165 V/m; Power Drift = -0.01 dB

Peak SAR (extrapolated) = 17.442 mW/g

**SAR(1 g) = 10 mW/g; SAR(10 g) = 5.33 mW/g**

Maximum value of SAR (measured) = 12.7 mW/g

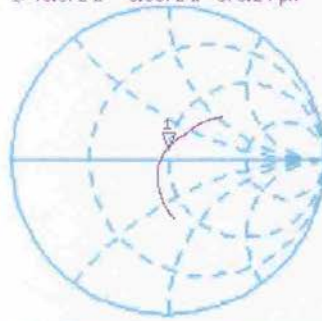


0 dB = 12.7 mW/g = 22.08 dB mW/g

### Impedance Measurement Plot for Body TSL

4 May 2012 17:14:11  
 CH1 S11 1 U FS 1: 48.572  $\Omega$  6.8672  $\Omega$  575.24 pF 1.900.000 000 MHz

#  
De1  
Cor



Avg  
15

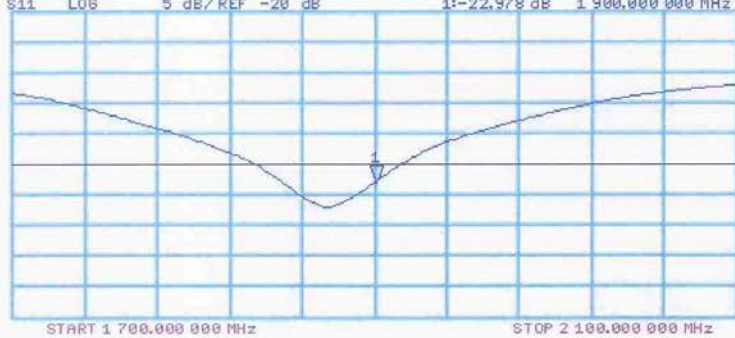
H1d

CH2 S11 L06 5 dB/REF -20 dB 1:-22.978 dB 1.900.000 000 MHz

Cor

Avg  
15

H1d



### 2450 MHz Dipole Calibration Certificate

**Calibration Laboratory of  
Schmid & Partner  
Engineering AG**  
Zeughausstrasse 43, 8004 Zurich, Switzerland



**S** Schweizerischer Kalibrierdienst  
**S** Service suisse d'étalonnage  
**C** Servizio svizzero di taratura  
**S** Swiss Calibration Service

Accredited by the Swiss Accreditation Service (SAS)  
The Swiss Accreditation Service is one of the signatories to the EA  
Multilateral Agreement for the recognition of calibration certificates

Accreditation No.: **SCS 108**

Client **TMC Beijing**

Certificate No: **D2450V2-853\_May12**

#### CALIBRATION CERTIFICATE

Object: **D2450V2 - SN: 853**

Calibration procedure(s): **QA CAL-05.v8  
Calibration procedure for dipole validation kits above 700 MHz**

Calibration date: **May 02, 2012**

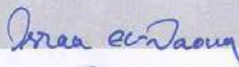

This calibration certificate documents the traceability to national standards, which realize the physical units of measurements (SI).  
The measurements and the uncertainties with confidence probability are given on the following pages and are part of the certificate.

All calibrations have been conducted in the closed laboratory facility; environment temperature (22 ± 3)°C and humidity < 70%.

Calibration Equipment used (M&TE critical for calibration)

Primary Standards	ID #	Cal Date (Certificate No.)	Scheduled Calibration
Power meter EPM-442A	GB37480704	05-Oct-11 (No. 217-01451)	Oct-12
Power sensor HP 8481A	US37292783	05-Oct-11 (No. 217-01451)	Oct-12
Reference 20 dB Attenuator	SN: 5058 (20k)	27-Mar-12 (No. 217-01530)	Apr-13
Type-N mismatch combination	SN: 5047.2 / 06327	27-Mar-12 (No. 217-01533)	Apr-13
Reference Probe ES3DV3	SN: 3205	30-Dec-11 (No. ES3-3205_Dec11)	Dec-12
DAE4	SN: 601	04-Jul-11 (No. DAE4-601_Jul11)	Jul-12

Secondary Standards	ID #	Check Date (in house)	Scheduled Check
Power sensor HP 8481A	MY41092317	18-Oct-02 (in house check Oct-11)	In house check: Oct-13
RF generator R&S SMT-06	100005	04-Aug-99 (in house check Oct-11)	In house check: Oct-13
Network Analyzer HP 8753E	US37390585 S4206	18-Oct-01 (in house check Oct-11)	In house check: Oct-12

	Name	Function	Signature
Calibrated by:	Israe El-Naouq	Laboratory Technician	
Approved by:	Katja Pokovic	Technical Manager	

Issued: May 2, 2012

This calibration certificate shall not be reproduced except in full without written approval of the laboratory.

**Calibration Laboratory of**  
Schmid & Partner  
Engineering AG  
Zeughausstrasse 43, 8004 Zurich, Switzerland



**S** Schweizerischer Kalibrierdienst  
**C** Service suisse d'étalonnage  
**S** Servizio svizzero di taratura  
**S** Swiss Calibration Service

Accredited by the Swiss Accreditation Service (SAS)  
The Swiss Accreditation Service is one of the signatories to the EA  
Multilateral Agreement for the recognition of calibration certificates

Accreditation No.: **SCS 108**

**Glossary:**

TSL	tissue simulating liquid
ConvF	sensitivity in TSL / NORM x,y,z
N/A	not applicable or not measured

**Calibration is Performed According to the Following Standards:**

- a) IEEE Std 1528-2003, "IEEE Recommended Practice for Determining the Peak Spatial-Averaged Specific Absorption Rate (SAR) in the Human Head from Wireless Communications Devices: Measurement Techniques", December 2003
- b) IEC 62209-1, "Procedure to measure the Specific Absorption Rate (SAR) for hand-held devices used in close proximity to the ear (frequency range of 300 MHz to 3 GHz)", February 2005
- c) Federal Communications Commission Office of Engineering & Technology (FCC OET), "Evaluating Compliance with FCC Guidelines for Human Exposure to Radiofrequency Electromagnetic Fields; Additional Information for Evaluating Compliance of Mobile and Portable Devices with FCC Limits for Human Exposure to Radiofrequency Emissions", Supplement C (Edition 01-01) to Bulletin 65

**Additional Documentation:**

- d) DASY4/5 System Handbook

**Methods Applied and Interpretation of Parameters:**

- *Measurement Conditions:* Further details are available from the Validation Report at the end of the certificate. All figures stated in the certificate are valid at the frequency indicated.
- *Antenna Parameters with TSL:* The dipole is mounted with the spacer to position its feed point exactly below the center marking of the flat phantom section, with the arms oriented parallel to the body axis.
- *Feed Point Impedance and Return Loss:* These parameters are measured with the dipole positioned under the liquid filled phantom. The impedance stated is transformed from the measurement at the SMA connector to the feed point. The Return Loss ensures low reflected power. No uncertainty required.
- *Electrical Delay:* One-way delay between the SMA connector and the antenna feed point. No uncertainty required.
- *SAR measured:* SAR measured at the stated antenna input power.
- *SAR normalized:* SAR as measured, normalized to an input power of 1 W at the antenna connector.
- *SAR for nominal TSL parameters:* The measured TSL parameters are used to calculate the nominal SAR result.

The reported uncertainty of measurement is stated as the standard uncertainty of measurement multiplied by the coverage factor  $k=2$ , which for a normal distribution corresponds to a coverage probability of approximately 95%.

### Measurement Conditions

DASY system configuration, as far as not given on page 1.

DASY Version	DASY5	V52.8.1
Extrapolation	Advanced Extrapolation	
Phantom	Modular Flat Phantom	
Distance Dipole Center - TSL	10 mm	with Spacer
Zoom Scan Resolution	dx, dy, dz = 5 mm	
Frequency	2450 MHz ± 1 MHz	

### Head TSL parameters

The following parameters and calculations were applied.

	Temperature	Permittivity	Conductivity
Nominal Head TSL parameters	22.0 °C	39.2	1.80 mho/m
Measured Head TSL parameters	(22.0 ± 0.2) °C	39.6 ± 6 %	1.81 mho/m ± 6 %
Head TSL temperature change during test	< 0.5 °C	----	----

### SAR result with Head TSL

SAR averaged over 1 cm <sup>3</sup> (1 g) of Head TSL	Condition	
SAR measured	250 mW input power	13.1 mW / g
SAR for nominal Head TSL parameters	normalized to 1W	<b>52.4 mW / g ± 17.0 % (k=2)</b>

SAR averaged over 10 cm <sup>3</sup> (10 g) of Head TSL	condition	
SAR measured	250 mW input power	6.09 mW / g
SAR for nominal Head TSL parameters	normalized to 1W	<b>24.4 mW / g ± 16.5 % (k=2)</b>

### Body TSL parameters

The following parameters and calculations were applied.

	Temperature	Permittivity	Conductivity
Nominal Body TSL parameters	22.0 °C	52.7	1.95 mho/m
Measured Body TSL parameters	(22.0 ± 0.2) °C	52.4 ± 6 %	1.98 mho/m ± 6 %
Body TSL temperature change during test	< 0.5 °C	----	----

### SAR result with Body TSL

SAR averaged over 1 cm <sup>3</sup> (1 g) of Body TSL	Condition	
SAR measured	250 mW input power	12.7 mW / g
SAR for nominal Body TSL parameters	normalized to 1W	<b>50.4 mW / g ± 17.0 % (k=2)</b>

SAR averaged over 10 cm <sup>3</sup> (10 g) of Body TSL	condition	
SAR measured	250 mW input power	5.92 mW / g
SAR for nominal Body TSL parameters	normalized to 1W	<b>23.6 mW / g ± 16.5 % (k=2)</b>

## Appendix

### Antenna Parameters with Head TSL

Impedance, transformed to feed point	53.7 $\Omega$ + 3.2 j $\Omega$
Return Loss	- 26.4 dB

### Antenna Parameters with Body TSL

Impedance, transformed to feed point	49.9 $\Omega$ + 4.8 j $\Omega$
Return Loss	- 26.4 dB

### General Antenna Parameters and Design

Electrical Delay (one direction)	1.163 ns
----------------------------------	----------

After long term use with 100W radiated power, only a slight warming of the dipole near the feedpoint can be measured.

The dipole is made of standard semirigid coaxial cable. The center conductor of the feeding line is directly connected to the second arm of the dipole. The antenna is therefore short-circuited for DC-signals. On some of the dipoles, small end caps are added to the dipole arms in order to improve matching when loaded according to the position as explained in the "Measurement Conditions" paragraph. The SAR data are not affected by this change. The overall dipole length is still according to the Standard.

No excessive force must be applied to the dipole arms, because they might bend or the soldered connections near the feedpoint may be damaged.

### Additional EUT Data

Manufactured by	SPEAG
Manufactured on	November 10, 2009

### DASY5 Validation Report for Head TSL

Date: 02.05.2012

Test Laboratory: SPEAG, Zurich, Switzerland

**DUT: Dipole 2450 MHz; Type: D2450V2; Serial: D2450V2 - SN: 853**

Communication System: CW; Frequency: 2450 MHz

Medium parameters used:  $f = 2450$  MHz;  $\sigma = 1.81$  mho/m;  $\epsilon_r = 39.6$ ;  $\rho = 1000$  kg/m<sup>3</sup>

Phantom section: Flat Section

Measurement Standard: DASY5 (IEEE/IEC/ANSI C63.19-2007)

DASY52 Configuration:

- Probe: ES3DV3 - SN3205; ConvF(4.45, 4.45, 4.45); Calibrated: 30.12.2011;
- Sensor-Surface: 3mm (Mechanical Surface Detection)
- Electronics: DAE4 Sn601; Calibrated: 04.07.2011
- Phantom: Flat Phantom 5.0 (front); Type: QD000P50AA; Serial: 1001
- DASY52 52.8.1(838); SEMCAD X 14.6.5(6469)

### Dipole Calibration for Head Tissue/Pin=250 mW, d=10mm/Zoom Scan (7x7x7)/Cube 0:

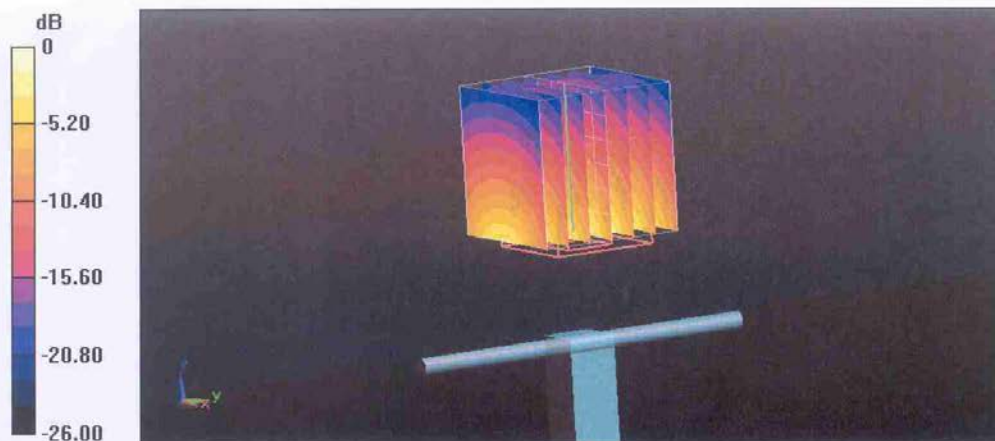
Measurement grid: dx=5mm, dy=5mm, dz=5mm

Reference Value = 100.0 V/m; Power Drift = 0.05 dB

Peak SAR (extrapolated) = 26.785 mW/g

**SAR(1 g) = 13.1 mW/g; SAR(10 g) = 6.09 mW/g**

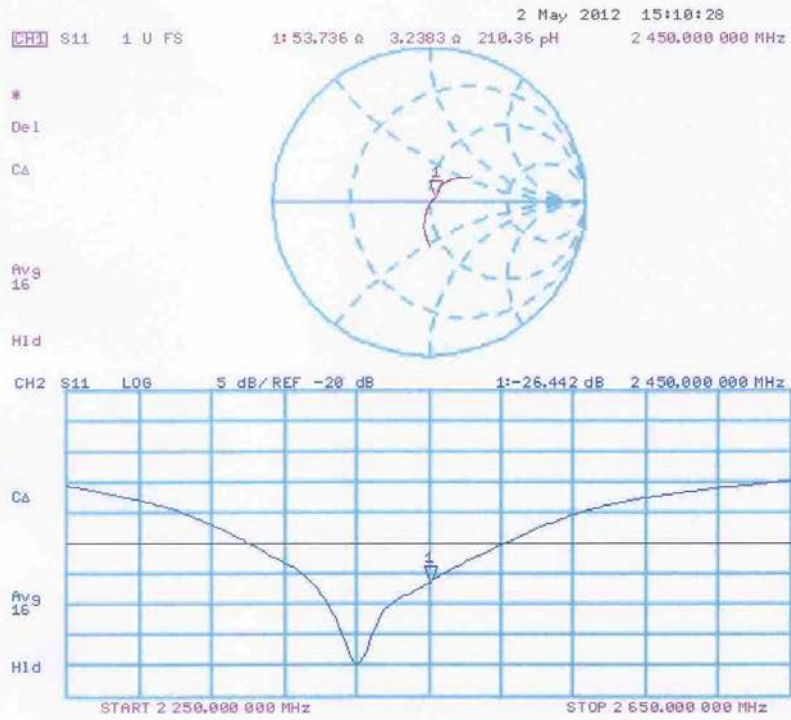
Maximum value of SAR (measured) = 16.7 mW/g



0 dB = 16.7 mW/g = 24.45 dB mW/g



### Impedance Measurement Plot for Head TSL



### DASY5 Validation Report for Body TSL

Date: 02.05.2012

Test Laboratory: SPEAG, Zurich, Switzerland

**DUT: Dipole 2450 MHz; Type: D2450V2; Serial: D2450V2 - SN: 853**

Communication System: CW; Frequency: 2450 MHz

Medium parameters used:  $f = 2450$  MHz;  $\sigma = 1.98$  mho/m;  $\epsilon_r = 52.4$ ;  $\rho = 1000$  kg/m<sup>3</sup>

Phantom section: Flat Section

Measurement Standard: DASY5 (IEEE/IEC/ANSI C63.19-2007)

DASY52 Configuration:

- Probe: ES3DV3 - SN3205; ConvF(4.26, 4.26, 4.26); Calibrated: 30.12.2011;
- Sensor-Surface: 3mm (Mechanical Surface Detection)
- Electronics: DAE4 Sn601; Calibrated: 04.07.2011
- Phantom: Flat Phantom 5.0 (back); Type: QD000P50AA; Serial: 1002
- DASY52 52.8.1(838); SEMCAD X 14.6.5(6469)

#### Dipole Calibration for Body Tissue/Pin=250 mW, d=10mm/Zoom Scan (7x7x7)/Cube 0:

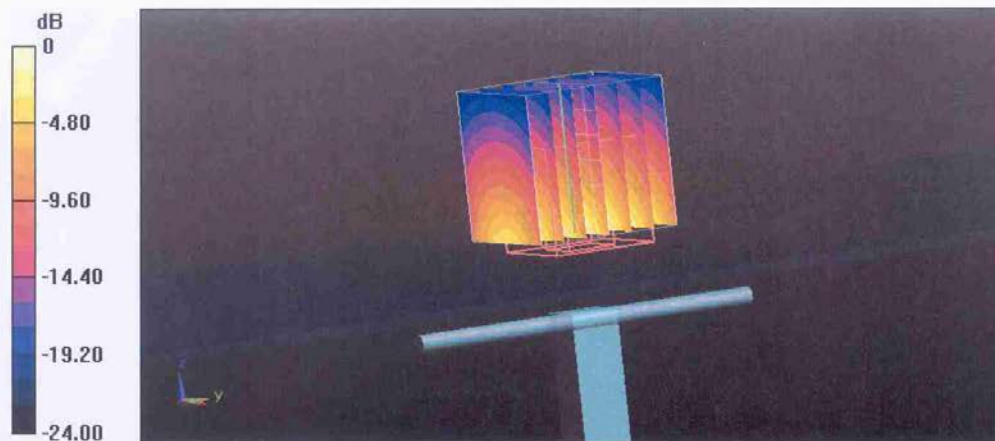
Measurement grid: dx=5mm, dy=5mm, dz=5mm

Reference Value = 95.306 V/m; Power Drift = 0.00 dB

Peak SAR (extrapolated) = 26.029 mW/g

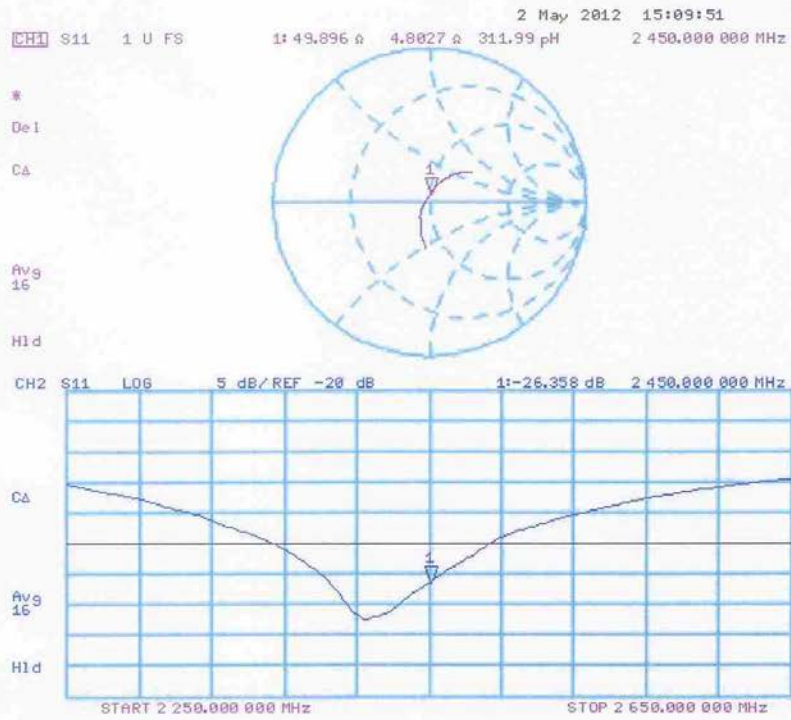
**SAR(1 g) = 12.7 mW/g; SAR(10 g) = 5.92 mW/g**

Maximum value of SAR (measured) = 16.8 mW/g



0 dB = 16.8 mW/g = 24.51 dB mW/g

### Impedance Measurement Plot for Body TSL



## ANNEX I DIPOLE QUALIFICATION FOR THE EXTENDED 3-YEAR CALIBRATION INTERVAL

### I1 Dipole 835

The information and documentation below are provided to qualify the extended 3-year calibration interval of dipole.

#### I1.1 List of Equipment

No.	Name	Type	Serial Number
01	Network analyzer	E5071C	MY46110673
02	Power meter	NRVD	102083
03	Power sensor	NRV-Z5	100542
04	Signal Generator	E4438C	MY49070393
05	Amplifier	60S1G4	0331848
06	E-field Probe	SPEAG EX3DV4	3846
07	DAE	SPEAG DAE4	771
08	Dipole Validation Kit	SPEAG D835V2	443

#### I1.2 Results of Impedance, Return-loss and System validation

##### Dipole 835 - Head

		Year		Deviation	Limit
		2012	2013		
Impedance	Real ( $\Omega$ )	50.8	53.6	2.8 $\Omega$	Deviation < 5 $\Omega$
	Imaginary ( $\Omega$ )	-6.7	-2.2	4.5 $\Omega$	Deviation < 5 $\Omega$
Return-loss (dB)		-23.5	-23.3	0.2dB	Deviate < 0.2dB
System validation	10g	1.52	1.56	2.63%	Deviation < 10%
	1g	2.33	2.38	2.15%	Deviation < 10%

##### Dipole 835 - Body

		Year		Deviation	Limit
		2012	2013		
Impedance	Real ( $\Omega$ )	46.8	49.1	2.3 $\Omega$	Deviation < 5 $\Omega$
	Imaginary ( $\Omega$ )	-7.8	-3.7	4.1 $\Omega$	Deviation < 5 $\Omega$
Return-loss (dB)		-21.2	-21.4	-0.2dB	Deviate < 0.2dB
System validation	10g	1.59	1.61	1.26%	Deviation < 10%
	1g	2.42	2.42	0.00%	Deviation < 10%

According to the above tables, it is not necessary to recalibration the dipoles in 2013.

## I2 Dipole 1900

The information and documentation below are provided to qualify the extended 3-year calibration interval of dipole.

### I2.1 List of Equipment

No.	Name	Type	Serial Number
01	Network analyzer	E5071C	MY46110673
02	Power meter	NRVD	102083
03	Power sensor	NRV-Z5	100542
04	Signal Generator	E4438C	MY49070393
05	Amplifier	60S1G4	0331848
06	E-field Probe	SPEAG EX3DV4	3846
07	DAE	SPEAG DAE4	771
08	Dipole Validation Kit	SPEAG D1900V2	541

### I2.2 Results of Impedance, Return-loss and System validation

#### Dipole 1900 - Head

		Year		Deviation	Limit
		2012	2013		
Impedance	Real ( $\Omega$ )	52.6	50.7	-1.9 $\Omega$	Deviation < 5 $\Omega$
	Imaginary ( $\Omega$ )	6.2	2.5	-3.7 $\Omega$	Deviation < 5 $\Omega$
Return-loss (dB)		-23.7	-23.5	0.2dB	Deviate < 0.2dB
System validation	10g	5.11	5.07	-0.78%	Deviation < 10%
	1g	9.62	9.61	-0.10%	Deviation < 10%

#### Dipole 1900 - Body

		Year		Deviation	Limit
		2012	2013		
Impedance	Real ( $\Omega$ )	48.6	47.1	-1.5 $\Omega$	Deviation < 5 $\Omega$
	Imaginary ( $\Omega$ )	6.9	3.3	-3.6 $\Omega$	Deviation < 5 $\Omega$
Return-loss (dB)		-23.0	-23.1	-0.1dB	Deviate < 0.2dB
System validation	10g	5.33	5.46	2.44%	Deviation < 10%
	1g	10	10.3	3.00%	Deviation < 10%

According to the above tables, it is not necessary to recalibration the dipoles in 2013.

### I3 Dipole 2450

The information and documentation below are provided to qualify the extended 3-year calibration interval of dipole.

#### I3.1 List of Equipment

No.	Name	Type	Serial Number
01	Network analyzer	E5071C	MY46110673
02	Power meter	NRVD	102083
03	Power sensor	NRV-Z5	100542
04	Signal Generator	E4438C	MY49070393
05	Amplifier	60S1G4	0331848
06	E-field Probe	SPEAG EX3DV4	3846
07	DAE	SPEAG DAE4	771
08	Dipole Validation Kit	SPEAG D2450V2	853

#### I3.2 Results of Impedance, Return-loss and System validation

##### Dipole 2450 - Head

		Year		Deviation	Limit
		2012	2013		
Impedance	Real ( $\Omega$ )	53.7	51.6	-2.1 $\Omega$	Deviation < 5 $\Omega$
	Imaginary ( $\Omega$ )	3.2	4.8	1.6 $\Omega$	Deviation < 5 $\Omega$
Return-loss (dB)		-26.4	-26.5	-0.1dB	Deviates < 0.2dB
System validation	10g	6.09	6.04	-0.82%	Deviation < 10%
	1g	13.1	12.9	-1.53%	Deviation < 10%

##### Dipole 2450 - Body

		Year		Deviation	Limit
		2012	2013		
Impedance	Real ( $\Omega$ )	49.9	52.5	2.6 $\Omega$	Deviation < 5 $\Omega$
	Imaginary ( $\Omega$ )	4.8	4.3	-0.5 $\Omega$	Deviation < 5 $\Omega$
Return-loss (dB)		-26.4	-26.2	0.2dB	Deviates < 0.2dB
System validation	10g	5.92	5.98	1.01%	Deviation < 10%
	1g	12.7	12.8	0.79%	Deviation < 10%

According to the above tables, it is not necessary to recalibration the dipoles in 2013.

## ANNEX J SPOT CHECK TEST

As the test lab for ONE TOUCH 4033E from TCT Mobile Limited, we, TMC Beijing, declare on our sole responsibility that, according to “Declaration of changes” provided by applicant, only the Spot check test should be performed. The test results are as below.

All the differences between spot check data and original data are within the measurement uncertainty. So it is acceptable to quote the test results of original sample.

### J.1 Internal Identification of EUT used during the spot check test

EUT ID*	IMEI	HW Version	SW Version
EUT1	013767000101575	Proto	VC86

\*EUT ID: is used to identify the test sample in the lab internally.

### J.2 Conducted power of selected case

**Table J.1: The conducted power results for GSM850/1900**

GSM 850MHz	Conducted Power (dBm)		
	Channel 251(848.8MHz)	Channel 190(836.6MHz)	Channel 128(824.2MHz)
	31.82	\	\
GSM 1900MHz	Conducted Power (dBm)		
	Channel 810(1909.8MHz)	Channel 661(1880MHz)	Channel 512(1850.2MHz)
	29.04	\	\

**Table J.2 : The conducted power results for GPRS**

GSM 850 GPRS (GMSK)	Measured Power (dBm)		
	251	190	128
2 Txslots	\	29.79	\
PCS1900 GPRS (GMSK)	Measured Power (dBm)		
	810	661	512
2 Txslots	\	\	26.54

**Table J.3 : The conducted power results for WCDMA**

Item	band	FDD V result		
	ARFCN	4233 (846.6MHz)	4182 (836.4MHz)	4132 (826.4MHz)
WCDMA	\	23.32	\	\
Item	band	FDD II result		
	ARFCN	9538 (1907.6MHz)	9400 (1880MHz)	9262 (1852.4MHz)
WCDMA	\	\	\	23.32

### J.3 Measurement results

The test were carried out at the same day of the original test.

#### SAR Values (GSM 850 MHz Band - Head)

Frequency		Side	Test Position	Battery Type	SAR(1g) (W/kg)	
MHz	Ch.				Original data	Spot check data

848.8	251	Left	Touch	CAB60B0000C1	0.592	0.586
-------	-----	------	-------	--------------	-------	-------

**SAR Values (GSM 850 MHz Band - Body)**

Frequency		Mode/Band	Test Position	Spacing (mm)	Battery Type	SAR(1g) (W/kg)	
MHz	Ch.					Original data	Spot check data
836.6	190	GPRS	Rear	10	CAB60B0000C1	1.03	0.931

**SAR Values (PCS 1900 MHz Band - Head)**

Frequency		Side	Test Position	Battery Type	SAR(1g) (W/kg)	
MHz	Ch.				Original data	Spot check data
1909.8	810	Left	Touch	CAB60B0000C1	0.342	0.345

**SAR Values (PCS 1900 MHz Band - Body)**

Frequency		Mode/Band	Test Position	Spacing (mm)	Battery Type	SAR(1g) (W/kg)	
MHz	Ch.					Original data	Spot check data
1850.2	512	GPRS	Rear	10	CAB60B0000C1	0.697	0.675

**SAR Values (WCDMA 850 MHz Band - Head)**

Frequency		Side	Test Position	Battery Type	SAR(1g) (W/kg)	
MHz	Ch.				Original data	Spot check data
846.6	4233	Left	Touch	CAB60B0000C1	0.648	0.634

**SAR Values (WCDMA 850 MHz Band - Body)**

Frequency		Test Position	Spacing (mm)	Battery Type	SAR(1g) (W/kg)	
MHz	Ch.				Original data	Spot check data
846.6	4233	Rear	10	CAB60B0000C1	0.878	0.958

**SAR Values (WCDMA 1900 MHz Band - Head)**

Frequency		Side	Test Position	Battery Type	SAR(1g) (W/kg)	
MHz	Ch.				Original data	Spot check data
1852.4	9262	Left	Touch	CAB60B0000C1	0.697	0.638

**SAR Values (WCDMA 1900 MHz Band - Body)**

Frequency		Test Position	Spacing (mm)	Battery Type	SAR(1g) (W/kg)	
MHz	Ch.				Original data	Spot check data
1852.4	9262	Bottom	10	CAB60B0000C1	1.08	0.859

**J.4 Reported SAR Comparison**

Exposure Configuration	Technology Band	Reported SAR 1g (W/Kg): original	Reported SAR 1g (W/Kg): spot check
Head (Separation Distance 0mm)	GSM 850	0.73	0.73
	PCS 1900	0.43	0.46
	UMTS FDD 2	0.75	0.74
	UMTS FDD 5	0.74	0.75
Body-worn (Separation Distance 10mm)	GSM 850	1.14	1.10
	PCS 1900	0.90	0.94
	UMTS FDD 2	1.15	1.00
	UMTS FDD 5	1.02	1.12



## J.5 Graphic results

### 850 Left Cheek High

Date: 2013-7-17

Electronics: DAE4 Sn771

Medium: Head 850 MHz

Medium parameters used (interpolated):  $f = 848.8$  MHz;  $\sigma = 0.936$  mho/m;  $\epsilon_r = 42.382$ ;  $\rho = 1000$  kg/m<sup>3</sup>

Ambient Temperature: 22.7°C      Liquid Temperature: 22.2°C

Communication System: GSM 850 Frequency: 848.8 MHz Duty Cycle: 1:8.3

Probe: EX3DV4 - SN3846 ConvF(9.18, 9.18, 9.18)

**Cheek High/Area Scan (61x101x1):** Interpolated grid: dx=1.000 mm, dy=1.000 mm

Maximum value of SAR (interpolated) = 0.603 W/kg

**Cheek High/Zoom Scan (7x7x7)/Cube 0:** Measurement grid: dx=5mm, dy=5mm, dz=5mm

Reference Value = 6.428 V/m; Power Drift = 0.12 dB

Peak SAR (extrapolated) = 0.729 W/kg

**SAR(1 g) = 0.586 W/kg; SAR(10 g) = 0.443 W/kg**

Maximum value of SAR (measured) = 0.614 W/kg

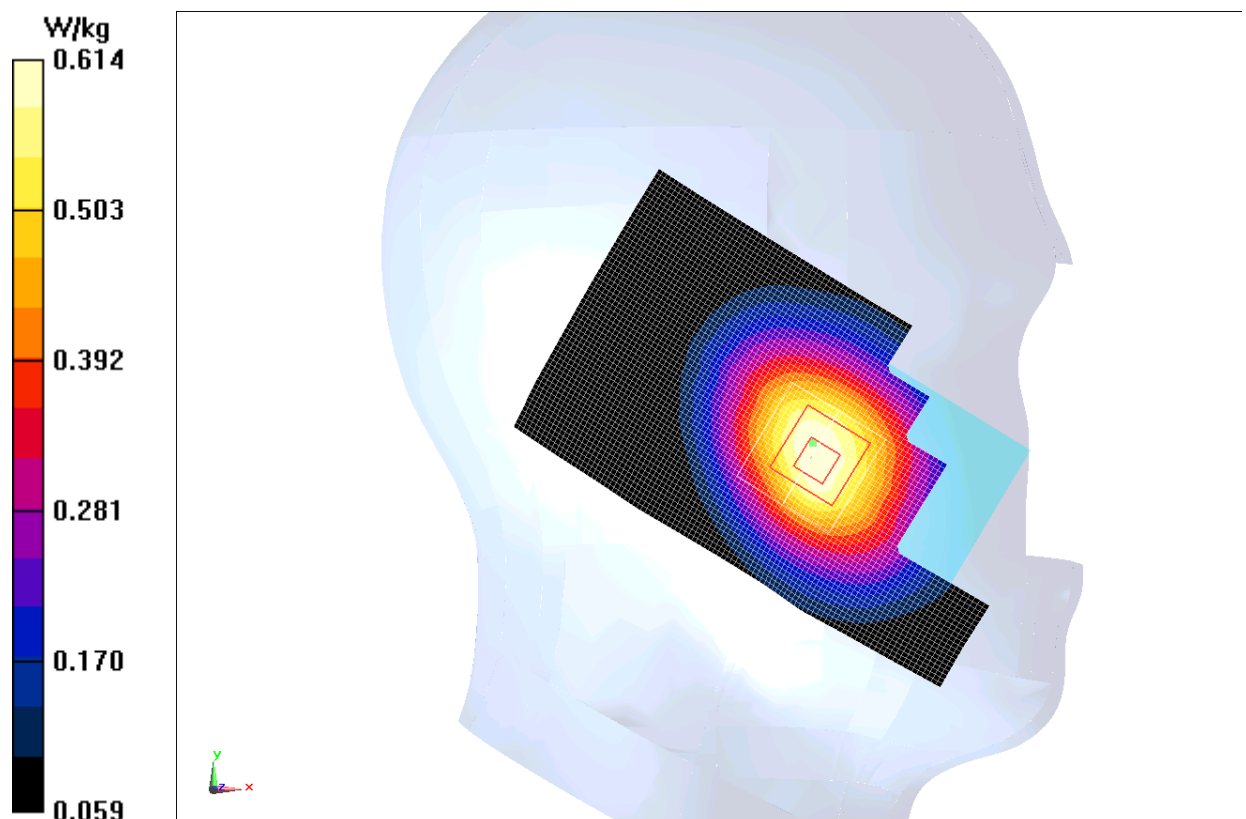


Fig.J.1 850MHz CH251

### 850 Body Rear Middle

Date: 2013-7-17

Electronics: DAE4 Sn771

Medium: Body 850 MHz

Medium parameters used (interpolated):  $f = 836.6$  MHz;  $\sigma = 0.975$  mho/m;  $\epsilon_r = 54.119$ ;  $\rho = 1000$  kg/m<sup>3</sup>

Ambient Temperature: 22.7°C      Liquid Temperature: 22.2°C

Communication System: GSM 850 GPRS Frequency: 836.6 MHz Duty Cycle: 1:4

Probe: EX3DV4 - SN3846 ConvF(9.04, 9.04, 9.04)

**Rear Middle/Area Scan (61x111x1):** Interpolated grid: dx=1.000 mm, dy=1.000 mm  
Maximum value of SAR (interpolated) = 0.979 W/kg

**Rear Middle/Zoom Scan (7x7x7)/Cube 0:** Measurement grid: dx=5mm, dy=5mm, dz=5mm  
Reference Value = 30.161 V/m; Power Drift = 0.00 dB  
Peak SAR (extrapolated) = 1.15 W/kg  
**SAR(1 g) = 0.931 W/kg; SAR(10 g) = 0.701 W/kg**  
Maximum value of SAR (measured) = 0.981 W/kg

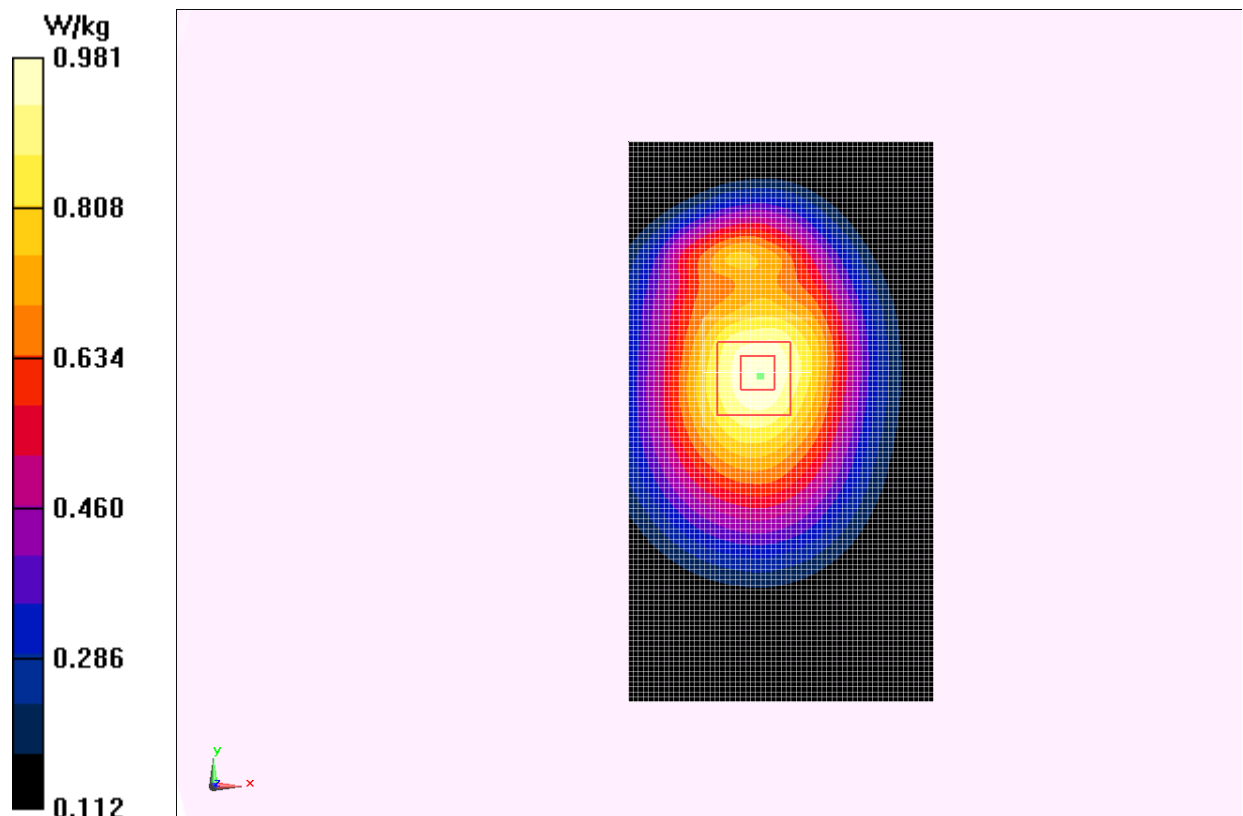


Fig.J.2 850 MHz CH190

**1900 Left Cheek High**

Date: 2013-7-18

Electronics: DAE4 Sn771

Medium: Head 1900 MHz

Medium parameters used:  $f = 1910$  MHz;  $\sigma = 1.414$  mho/m;  $\epsilon_r = 39.626$ ;  $\rho = 1000$  kg/m<sup>3</sup>

Ambient Temperature: 22.7°C      Liquid Temperature: 22.2°C

Communication System: GSM 1900MHz Frequency: 1909.8 MHz Duty Cycle: 1:8.3

Probe: EX3DV4 - SN3846 ConvF(8.01, 8.01, 8.01)

**Cheek High/Area Scan (61x101x1):** Interpolated grid: dx=1.000 mm, dy=1.000 mm

Maximum value of SAR (interpolated) = 0.375 W/kg

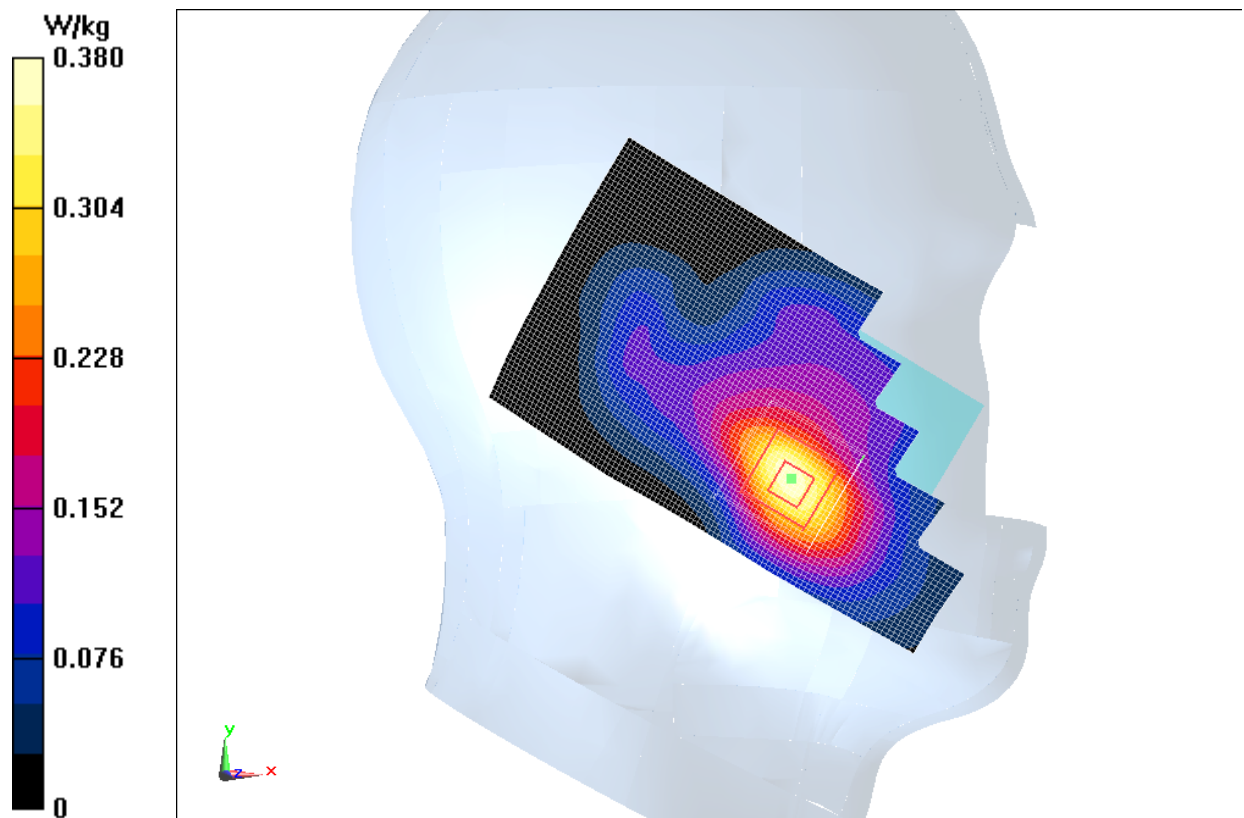
**Cheek High/Zoom Scan (7x7x7)/Cube 0:** Measurement grid: dx=5mm, dy=5mm, dz=5mm

Reference Value = 6.931 V/m; Power Drift = 0.16 dB

Peak SAR (extrapolated) = 0.527 W/kg

**SAR(1 g) = 0.345 W/kg; SAR(10 g) = 0.208 W/kg**

Maximum value of SAR (measured) = 0.380 W/kg



**Fig.J.3 1900 MHz CH810**

### 1900 Body Rear Low

Date: 2013-7-18

Electronics: DAE4 Sn771

Medium: Body 1900 MHz

Medium parameters used (interpolated):  $f = 1850.2$  MHz;  $\sigma = 1.496$  mho/m;  $\epsilon_r = 52.18$ ;  $\rho = 1000$  kg/m<sup>3</sup>

Ambient Temperature: 22.7°C      Liquid Temperature: 22.2°C

Communication System: GSM 1900MHz GPRS Frequency: 1850.2 MHz Duty Cycle: 1:4

Probe: EX3DV4 - SN3846 ConvF(7.37, 7.37, 7.37)

**Rear Low/Area Scan (61x111x1):** Interpolated grid: dx=1.000 mm, dy=1.000 mm

Maximum value of SAR (interpolated) = 0.752 W/kg

**Rear Low/Zoom Scan (7x7x7)/Cube 0:** Measurement grid: dx=5mm, dy=5mm, dz=5mm

Reference Value = 11.017 V/m; Power Drift = -0.01 dB

Peak SAR (extrapolated) = 1.03 W/kg

**SAR(1 g) = 0.675 W/kg; SAR(10 g) = 0.424 W/kg**

Maximum value of SAR (measured) = 0.715 W/kg

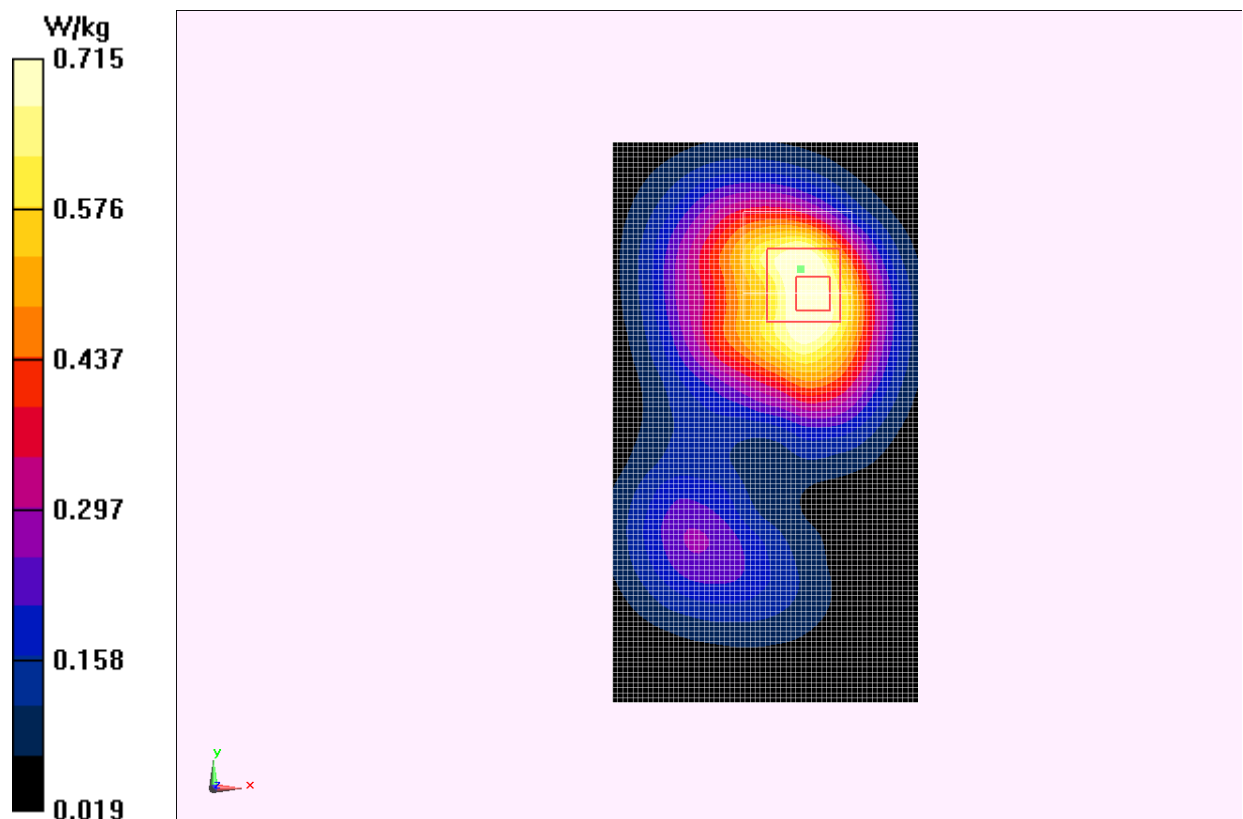


Fig.J.4 1900 MHz CH512

### WCDMA 850 Left Cheek High

Date: 2013-7-17

Electronics: DAE4 Sn771

Medium: Head 850 MHz

Medium parameters used (interpolated):  $f = 846.6$  MHz;  $\sigma = 0.933$  mho/m;  $\epsilon_r = 42.41$ ;  $\rho = 1000$  kg/m<sup>3</sup>

Ambient Temperature: 22.7°C      Liquid Temperature: 22.2°C

Communication System: WCDMA; Frequency: 846.6 MHz; Duty Cycle: 1:1

Probe: EX3DV4 - SN3846 ConvF(9.18, 9.18, 9.18)

**Cheek High/Area Scan (61x101x1):** Interpolated grid: dx=1.000 mm, dy=1.000 mm

Maximum value of SAR (interpolated) = 0.661 W/kg

**Cheek High/Zoom Scan (7x7x7)/Cube 0:** Measurement grid: dx=5mm, dy=5mm, dz=5mm

Reference Value = 8.678 V/m; Power Drift = 0.04 dB

Peak SAR (extrapolated) = 0.766 W/kg

**SAR(1 g) = 0.634 W/kg; SAR(10 g) = 0.487 W/kg**

Maximum value of SAR (measured) = 0.663 W/kg

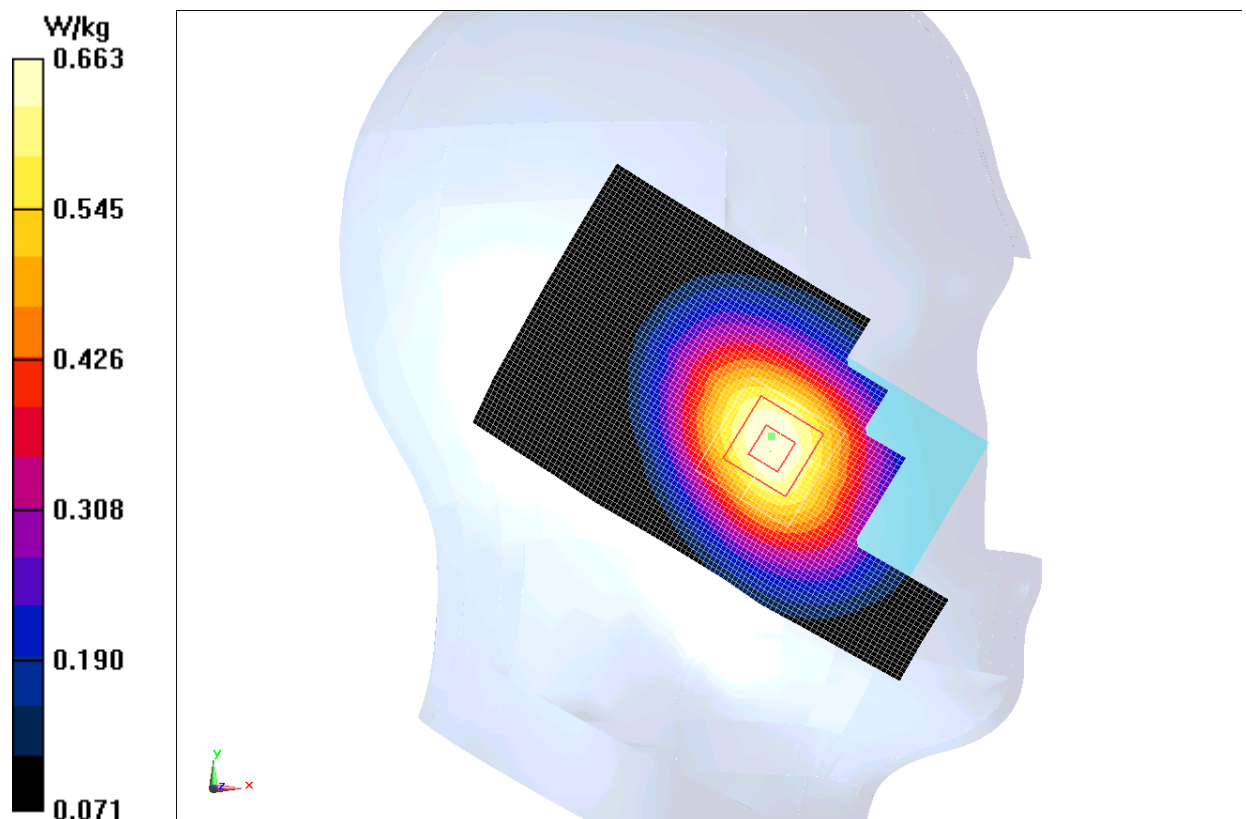


Fig.J.5 WCDMA 850 CH4233

### WCDMA 850 Body Rear High

Date: 2013-7-17

Electronics: DAE4 Sn771

Medium: Body 850 MHz

Medium parameters used (interpolated):  $f = 846.6$  MHz;  $\sigma = 0.984$  mho/m;  $\epsilon_r = 53.996$ ;  $\rho = 1000$  kg/m<sup>3</sup>

Ambient Temperature: 22.7°C      Liquid Temperature: 22.2°C

Communication System: WCDMA; Frequency: 846.6 MHz; Duty Cycle: 1:1

Probe: EX3DV4 - SN3846 ConvF(9.04, 9.04, 9.04)

**Rear High/Area Scan (61x111x1):** Interpolated grid: dx=1.000 mm, dy=1.000 mm

Maximum value of SAR (interpolated) = 1.01 W/kg

**Rear High/Zoom Scan (7x7x7)/Cube 0:** Measurement grid: dx=5mm, dy=5mm, dz=5mm

Reference Value = 28.424 V/m; Power Drift = -0.03 dB

Peak SAR (extrapolated) = 1.18 W/kg

**SAR(1 g) = 0.958 W/kg; SAR(10 g) = 0.719 W/kg**

Maximum value of SAR (measured) = 1.01 W/kg

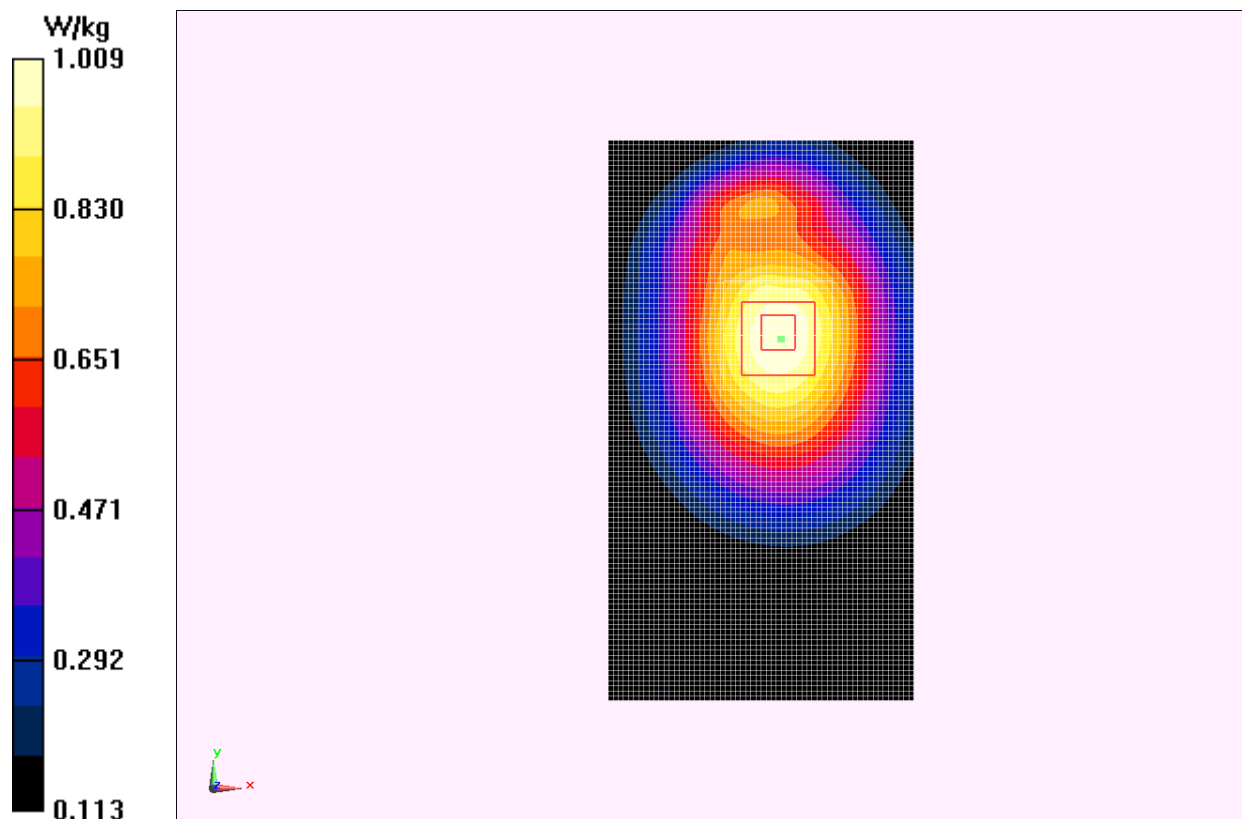


Fig.J.6 WCDMA 850 CH4233

### WCDMA 1900 Left Cheek Low

Date: 2013-7-18

Electronics: DAE4 Sn771

Medium: Head 1900 MHz

Medium parameters used (interpolated):  $f = 1852.4$  MHz;  $\sigma = 1.364$  mho/m;  $\epsilon_r = 39.785$ ;  $\rho = 1000$  kg/m<sup>3</sup>

Ambient Temperature: 22.7°C      Liquid Temperature: 22.2°C

Communication System: WCDMA 1900 Frequency: 1852.4 MHz Duty Cycle: 1:1

Probe: EX3DV4 - SN3846 ConvF(8.01, 8.01, 8.01)

**Cheek Low/Area Scan (61x101x1):** Interpolated grid: dx=1.000 mm, dy=1.000 mm

Maximum value of SAR (interpolated) = 0.692 W/kg

**Cheek Low/Zoom Scan (7x7x7)/Cube 0:** Measurement grid: dx=5mm, dy=5mm, dz=5mm

Reference Value = 10.244 V/m; Power Drift = -0.05 dB

Peak SAR (extrapolated) = 0.946 W/kg

**SAR(1 g) = 0.638 W/kg; SAR(10 g) = 0.393 W/kg**

Maximum value of SAR (measured) = 0.704 W/kg

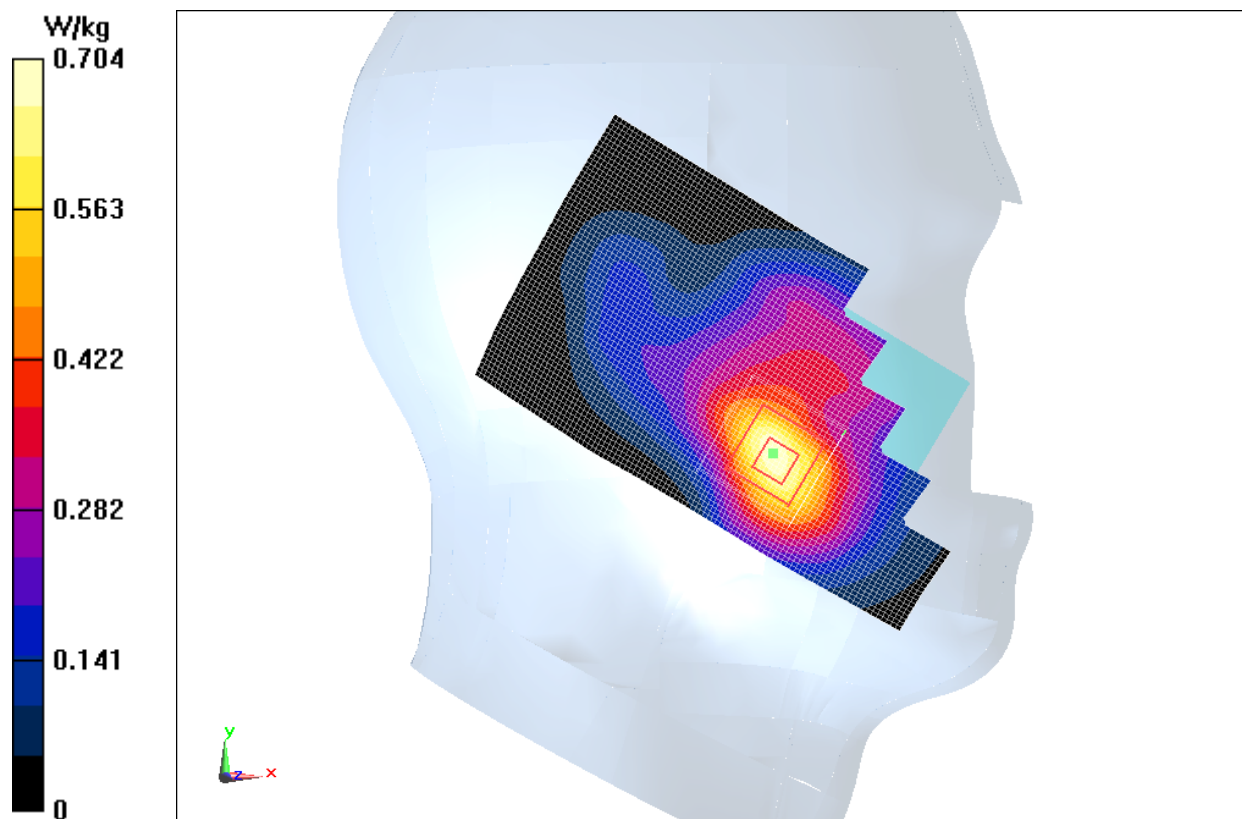


Fig.J.7 WCDMA1900 CH9262

### WCDMA 1900 Body Bottom Edge Low

Date: 2013-7-18

Electronics: DAE4 Sn771

Medium: Body 1900 MHz

Medium parameters used (interpolated):  $f = 1852.4$  MHz;  $\sigma = 1.497$  mho/m;  $\epsilon_r = 52.17$ ;  $\rho = 1000$  kg/m<sup>3</sup>

Ambient Temperature: 22.7°C      Liquid Temperature: 22.2°C

Communication System: WCDMA 1900 Frequency: 1852.4 MHz Duty Cycle: 1:1

Probe: EX3DV4 - SN3846 ConvF(7.37, 7.37, 7.37)

**Bottom Edge Low/Area Scan (61x111x1):** Interpolated grid: dx=1.000 mm, dy=1.000 mm

Maximum value of SAR (interpolated) = 0.935 W/kg

**Bottom Edge Low/Zoom Scan (7x7x7)/Cube 0:** Measurement grid: dx=5mm, dy=5mm, dz=5mm

Reference Value = 24.540 V/m; Power Drift = 0.06 dB

Peak SAR (extrapolated) = 1.33 W/kg

**SAR(1 g) = 0.859 W/kg; SAR(10 g) = 0.496 W/kg**

Maximum value of SAR (measured) = 0.957 W/kg

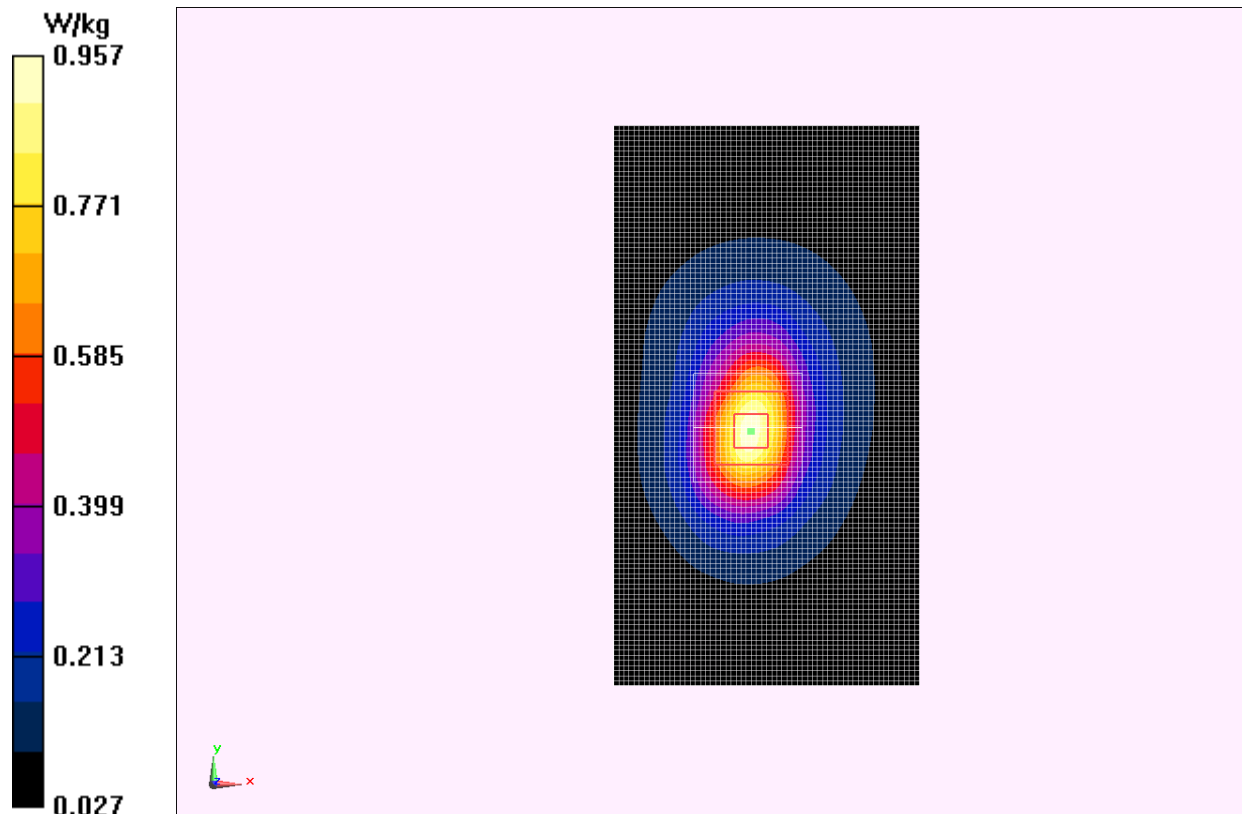


Fig.J.8 WCDMA1900 CH9262