



SAR TEST REPORT

No. I14Z45895-SEM01

For

TCT Mobile Limited

HSUPA/HSDPA/UMTS dualband / GSM quadband mobile phone

Model Name: 6043A

With

Hardware Version: PIO

Software Version: vAK2

FCC ID: RAD493

IC Number: 9238A-0033

Issued Date: 2014-06-24



Note:

The test results in this test report relate only to the devices specified in this report. This report shall not be reproduced except in full without the written approval of TMC Beijing.

Test Laboratory:

TMC Beijing, Telecommunication Metrology Center of MIIT

No. 52, Huayuan Bei Road, Haidian District, Beijing, P. R. China 100191.

Tel:+86(0)10-62304633-2079, Fax:+86(0)10-62304633 Email:welcomed@emcite.com. www.emcite.com

Revision Version

Report Number	Revision	Date	Memo
I14Z45895-SEM01	00	2014-06-24	Initial creation of test report

TABLE OF CONTENT

1 TEST LABORATORY	5
1.1 TESTING LOCATION	5
1.2 TESTING ENVIRONMENT.....	5
1.3 PROJECT DATA	5
1.4 SIGNATURE.....	5
2 STATEMENT OF COMPLIANCE	6
3 CLIENT INFORMATION.....	8
3.1 APPLICANT INFORMATION	8
3.2 MANUFACTURER INFORMATION	8
4 EQUIPMENT UNDER TEST (EUT) AND ANCILLARY EQUIPMENT (AE)	9
4.1 ABOUT EUT	9
4.2 INTERNAL IDENTIFICATION OF EUT USED DURING THE TEST	9
4.3 INTERNAL IDENTIFICATION OF AE USED DURING THE TEST.....	9
5 TEST METHODOLOGY	10
5.1 APPLICABLE LIMIT REGULATIONS	10
5.2 APPLICABLE MEASUREMENT STANDARDS.....	10
6 SPECIFIC ABSORPTION RATE (SAR).....	11
6.1 INTRODUCTION.....	11
6.2 SAR DEFINITION.....	11
7 TISSUE SIMULATING LIQUIDS.....	12
7.1 TARGETS FOR TISSUE SIMULATING LIQUID	12
7.2 DIELECTRIC PERFORMANCE	12
8 SYSTEM VERIFICATION.....	17
8.1 SYSTEM SETUP.....	17
8.2 SYSTEM VERIFICATION.....	18
9 MEASUREMENT PROCEDURES	19
9.1 TESTS TO BE PERFORMED	19
9.2 GENERAL MEASUREMENT PROCEDURE.....	21
9.3 WCDMA MEASUREMENT PROCEDURES FOR SAR	22
9.4 BLUETOOTH & WI-FI MEASUREMENT PROCEDURES FOR SAR	23
9.5 POWER DRIFT.....	23
10 AREA SCAN BASED 1-G SAR	24
10.1 REQUIREMENT OF KDB.....	24
10.2 FAST SAR ALGORITHMS	24
11 CONDUCTED OUTPUT POWER.....	25

11.1 MANUFACTURING TOLERANCE	25
11.2 GSM MEASUREMENT RESULT	28
11.3 WCDMA MEASUREMENT RESULT.....	29
11.4 WI-FI AND BT MEASUREMENT RESULT	29
12 SIMULTANEOUS TX SAR CONSIDERATIONS	32
12.1 INTRODUCTION.....	32
12.2 TRANSMIT ANTENNA SEPARATION DISTANCES	32
12.3 SAR MEASUREMENT POSITIONS	32
12.4 STANDALONE SAR TEST EXCLUSION CONSIDERATIONS	33
13 EVALUATION OF SIMULTANEOUS.....	34
14 SAR TEST RESULT.....	35
14.1 SAR RESULTS FOR FAST SAR.....	35
14.3 SAR RESULTS FOR STANDARD PROCEDURE.....	42
15 SAR MEASUREMENT VARIABILITY.....	44
16 MEASUREMENT UNCERTAINTY	45
17 MAIN TEST INSTRUMENTS	49
ANNEX A GRAPH RESULTS	50
ANNEX B SYSTEM VERIFICATION RESULTS.....	74
ANNEX C SAR MEASUREMENT SETUP	89
ANNEX D POSITION OF THE WIRELESS DEVICE IN RELATION TO THE PHANTOM	95
ANNEX E EQUIVALENT MEDIA RECIPES	98
ANNEX F SYSTEM VALIDATION	99
ANNEX G PROBE CALIBRATION CERTIFICATE	100
ANNEX H DIPOLE CALIBRATION CERTIFICATE.....	111

1 Test Laboratory

1.1 Testing Location

Company Name: TMC Beijing, Telecommunication Metrology Center of MIIT
Address: No 52, Huayuan beilu, Haidian District, Beijing, P.R.China
Postal Code: 100191
Telephone: +86-10-62304633
Fax: +86-10-62304793

1.2 Testing Environment

Temperature: 18°C~25 °C,
Relative humidity: 30%~ 70%
Ground system resistance: < 0.5 Ω
Ambient noise & Reflection: < 0.012 W/kg

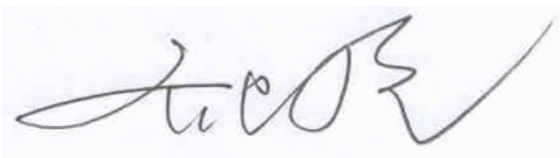
1.3 Project Data

Project Leader: Qi Dianyuan
Test Engineer: Lin Xiaojun
Testing Start Date: May 12, 2014
Testing End Date: May 28, 2014

1.4 Signature



Lin Xiaojun
(Prepared this test report)



Qi Dianyuan
(Reviewed this test report)



Xiao Li
Deputy Director of the laboratory
(Approved this test report)

2 Statement of Compliance

The maximum results of Specific Absorption Rate (SAR) found during testing for TCT Mobile Limited HSUPA/HSDPA/UMTS dualband / GSM quadband mobile phone 6043A are as follows:

Table 2.1: Highest Reported SAR (1g)

Exposure Configuration	Technology Band	Highest Reported SAR 1g (W/Kg)	Equipment Class
Head (Separation Distance 0mm)	GSM 850	0.37	PCE
	PCS 1900	0.19	
	UMTS FDD 2	0.39	
	UMTS FDD 5	0.33	
	WLAN 2.4&5.8 GHz	0.75	DTS
	WLAN 5 GHz	0.22	UNII
Body-worn (Separation Distance 10mm)	GSM 850	0.91	PCE
	PCS 1900	0.91	
	UMTS FDD 2	1.15	
	UMTS FDD 5	0.72	
	WLAN 2.4&5.8 GHz	0.13	DTS
	WLAN 5.0 GHz	0.05	UNII

The SAR values found for the Mobile Phone are below the maximum recommended levels of 1.6 W/Kg as averaged over any 1g tissue according to the ANSI C95.1-1999.

For body worn operation, this device has been tested and meets FCC RF exposure guidelines when used with any accessory that contains no metal and which provides a minimum separation distance of 10 mm between this device and the body of the user. Use of other accessories may not ensure compliance with FCC RF exposure guidelines.

The EUT battery must be fully charged and checked periodically during the test to ascertain uniform power output.

The measurement together with the test system set-up is described in annex C of this test report. A detailed description of the equipment under test can be found in chapter 4 of this test report.

The highest reported SAR value is obtained at the case of **(Table 2.1)**, and the values are: **1.15 W/kg (1g)**.

Table 2.2: The sum of reported SAR values for main antenna and WiFi

	Position	Main antenna	WiFi	Sum
Highest reported SAR value for Head	Left hand, Touch cheek	0.39	0.33	0.72
	Right hand, Touch cheek	0.37	0.75	1.12
Highest reported SAR value for Body	Rear	0.91	0.13	1.04
	Bottom	1.15	/	1.15

Table 2.3: The sum of reported SAR values for main antenna and Bluetooth

	Position	Main antenna	BT*	Sum
Highest reported SAR value for Head	Left hand, Touch cheek	0.39	0.04	0.43
Highest reported SAR value for Body	Bottom	1.15	0.02	1.17

BT* - Estimated SAR for Bluetooth (see the table 13.3)

According to the above tables, the highest sum of reported SAR values is **1.17 W/kg (1g)**. The detail for simultaneous transmission consideration is described in chapter 13.

3 Client Information

3.1 Applicant Information

Company Name:	TCT Mobile Limited
Address /Post:	5F, C building, No. 232, Liang Jing Road ZhangJiang High-Tech Park, Pudong Area Shanghai, P.R. China. 201203
City:	ShangHai
Postal Code:	201203
Country:	P.R.China
Contact:	Gong Zhizhou
Email:	zhizhou.gong@tcl.com
Telephone:	0086-21-51798260
Fax:	0086-21-61460602

3.2 Manufacturer Information

Company Name:	TCT Mobile Limited
Address /Post:	5F, C building, No. 232, Liang Jing Road ZhangJiang High-Tech Park, Pudong Area Shanghai, P.R. China. 201203
City:	ShangHai
Postal Code:	201203
Country:	P.R.China
Contact:	Gong Zhizhou
Email:	zhizhou.gong@tcl.com
Telephone:	0086-21-51798260
Fax:	0086-21-61460602

4 Equipment Under Test (EUT) and Ancillary Equipment (AE)

4.1 About EUT

Description:	HSUPA/HSDPA/UMTS dualband / GSM quadband mobile phone
Model Name:	6043A
Operating mode(s):	GSM 850/900/1800/1900, WCDMA 850/1900, BT, Wi-Fi (2.4G&5G)
Tested Tx Frequency:	825 – 848.8 MHz (GSM 850)
	1850.2 – 1910 MHz (GSM 1900)
	826.4–846.6 MHz (WCDMA850 Band V)
	1852.4–1907.6 MHz (WCDMA1900 Band II)
	2412 – 2462 MHz (Wi-Fi 2.4G)
	5180 – 5580 MHz; 5660 – 5825 MHz (Wi-Fi 5G)
GPRS/EGPRS Multislot Class:	12
GPRS capability Class:	B
Test device Production information:	Production unit
Device type:	Portable device
Antenna type:	Integrated antenna
Accessories configurations:	Headset
Hotspot mode:	Support simultaneous transmission of hotspot and voice(or data)
Form factor:	140.4 mm × 69.1 mm

4.2 Internal Identification of EUT used during the test

EUT ID*	IMEI	HW Version	SW Version
EUT1	014086000002975	PIO	vAK2
EUT2	014086000000599	PIO	vAK2
EUT3	014086000001399	PIO	vAK2

*EUT ID: is used to identify the test sample in the lab internally.

Note: It is performed to test SAR with the EUT1&2 and conducted power with the EUT3.

4.3 Internal Identification of AE used during the test

AE ID*	Description	Model	SN	Manufacturer
AE1	Battery	CAC2500017C2	/	SCUD
AE2	Headset	CCB3001A1BC2 (CCB3001A14C2)	/	Juwei
AE3	Headset	CCB3001A15C2 (CCB3001A1CC2)	/	Juwei
AE4	Headset	CCB3001A1BC4 (CCB3001A14C4)	/	Meihao
AE5	Headset	CCB3001A1CC4 (CCB3001A15C4)	/	Meihao
AE6	Headset	CCA0001A10C9	/	JBL
AE7	Headset	CCA0001B10C9	/	JBL

*AE ID: is used to identify the test sample in the lab internally.

Note: AE3 is same as AE2, so they can use the same results.

AE5 is same as AE4, so they can use the same results.

AE7 is same as AE6, so they can use the same results.

5 TEST METHODOLOGY

5.1 Applicable Limit Regulations

ANSI C95.1–1999: IEEE Standard for Safety Levels with Respect to Human Exposure to Radio Frequency Electromagnetic Fields, 3 kHz to 300 GHz.

It specifies the maximum exposure limit of **1.6 W/kg** as averaged over any 1 gram of tissue for portable devices being used within 20 cm of the user in the uncontrolled environment.

5.2 Applicable Measurement Standards

IEEE 1528–2013: Recommended Practice for Determining the Peak Spatial-Average Specific Absorption Rate (SAR) in the Human Body Due to Wireless Communications Devices: Experimental Techniques.

KDB447498 D01: General RF Exposure Guidance v05r02: Mobile and Portable Devices RF Exposure Procedures and Equipment Authorization Policies.

KDB648474 D04 Handset SAR v01r02: SAR Evaluation Considerations for Wireless Handsets.

KDB941225 D05 SAR for LTE Devices v02r03: SAR Evaluation Considerations for LTE Devices

KDB941225 D06 Hotspot Mode SAR v01r01: SAR Evaluation Procedures for Portable Devices with Wireless Router Capabilities

KDB248227: SAR measurement procedures for 802.112abg transmitters

KDB 865664 D01 SAR measurement 100 MHz to 6 GHz v01r03: SAR Measurement Requirements for 100 MHz to 6 GHz.

KDB 865664 D02 RF Exposure Reporting v01r01: RF Exposure Compliance Reporting and Documentation Considerations

6 Specific Absorption Rate (SAR)

6.1 Introduction

SAR is related to the rate at which energy is absorbed per unit mass in an object exposed to a radio field. The SAR distribution in a biological body is complicated and is usually carried out by experimental techniques or numerical modeling. The standard recommends limits for two tiers of groups, occupational/controlled and general population/uncontrolled, based on a person's awareness and ability to exercise control over his or her exposure. In general, occupational/controlled exposure limits are higher than the limits for general population/uncontrolled.

6.2 SAR Definition

The SAR definition is the time derivative (rate) of the incremental energy (dW) absorbed by (dissipated in) an incremental mass (dm) contained in a volume element (dv) of a given density (ρ). The equation description is as below:

$$SAR = \frac{d}{dt} \left(\frac{dW}{dm} \right) = \frac{d}{dt} \left(\frac{dW}{\rho dv} \right)$$

SAR is expressed in units of Watts per kilogram (W/kg)

SAR measurement can be either related to the temperature elevation in tissue by

$$SAR = c \left(\frac{\delta T}{\delta t} \right)$$

Where: C is the specific heat capacity, δT is the temperature rise and δt is the exposure duration, or related to the electrical field in the tissue by

$$SAR = \frac{\sigma |E|^2}{\rho}$$

Where: σ is the conductivity of the tissue, ρ is the mass density of tissue and E is the RMS electrical field strength.

However for evaluating SAR of low power transmitter, electrical field measurement is typically applied.

7 Tissue Simulating Liquids

7.1 Targets for tissue simulating liquid

Table 7.1: Targets for tissue simulating liquid

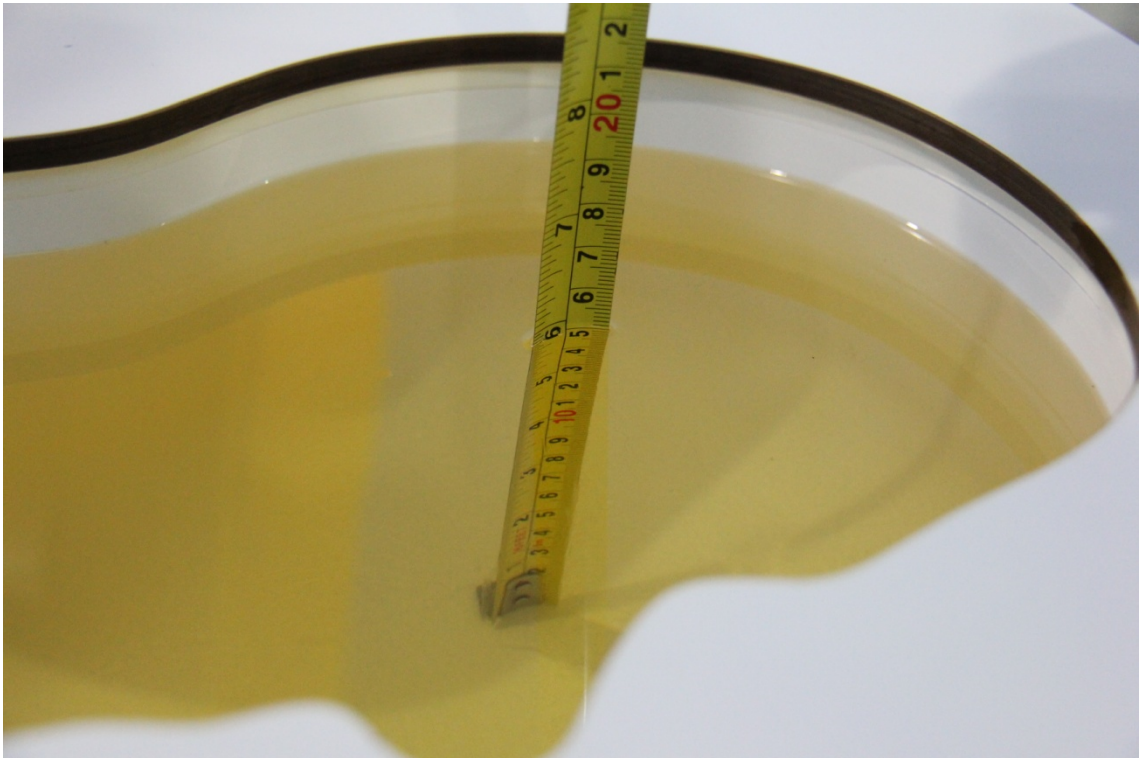
Frequency(MHz)	Liquid Type	Conductivity(σ)	$\pm 5\%$ Range	Permittivity(ϵ)	$\pm 5\%$ Range
835	Head	0.90	0.86~0.95	41.5	39.4~43.6
835	Body	0.97	0.92~1.02	55.2	52.4~58.0
1900	Head	1.40	1.33~1.47	40.0	38.0~42.0
1900	Body	1.52	1.44~1.60	53.3	50.6~56.0
2450	Head	1.80	1.71~1.89	39.2	37.2~41.2
2450	Body	1.95	1.85~2.05	52.7	50.1~55.3
5200	Head	4.66	4.43~4.89	35.99	34.19~37.79
5200	Body	5.30	5.04~5.56	49.0	46.6~51.4
5300	Head	4.76	4.52~5.00	35.87	34.08~37.66
5300	Body	5.42	5.15~5.69	48.9	46.46~51.34
5600	Head	5.07	4.82~5.32	35.53	33.75~37.31
5600	Body	5.77	5.48~6.06	48.5	46.08~50.92
5800	Head	5.27	5.01~5.53	35.3	33.5~37.1
5800	Body	6.00	5.70~6.30	48.2	45.8~50.6

7.2 Dielectric Performance

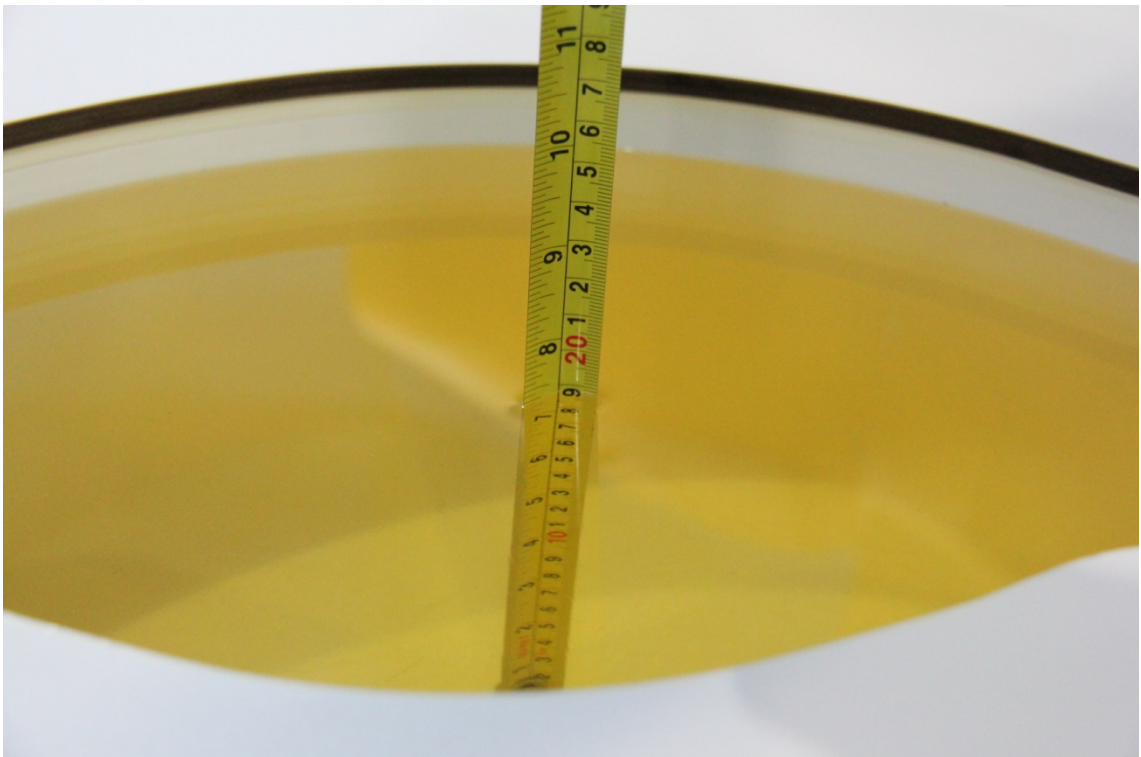
Table 7.2: Dielectric Performance of Tissue Simulating Liquid

Measurement Date (yyyy-mm-dd)	Type	Frequency	Permittivity ϵ	Drift (%)	Conductivity σ (S/m)	Drift (%)
2014-05-12	Head	835 MHz	41.16	-0.82	0.893	-0.78
	Body	835 MHz	54.87	-0.60	0.982	1.24
2014-05-13	Head	1900 MHz	39.68	-0.80	1.413	0.93
	Body	1900 MHz	52.85	-0.84	1.507	-0.86
2014-05-24	Head	2450 MHz	38.72	-1.22	1.833	1.83
	Body	2450 MHz	52.12	-1.10	1.928	-1.13
2014-05-27	Head	5200 MHz	36.54	1.53	4.577	-1.78
	Body	5200 MHz	48.45	-1.12	5.246	-1.02
	Head	5300 MHz	36.36	1.37	4.659	-2.12
	Body	5300 MHz	48.23	-1.37	5.401	-0.35
	Head	5600 MHz	35.86	0.93	4.984	-1.70
	Body	5600 MHz	47.52	-2.02	5.875	1.82
	Head	5800 MHz	35.52	0.62	5.193	-1.46
	Body	5800 MHz	46.97	-2.55	6.187	3.12

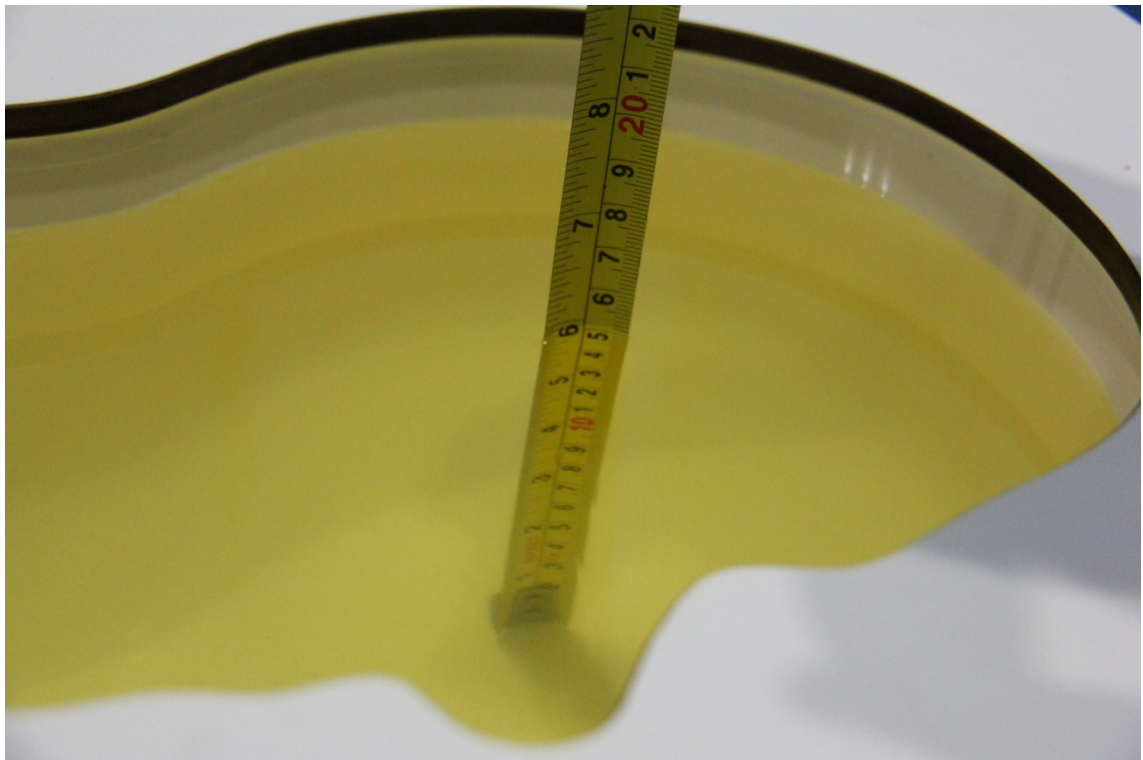
Note: The liquid temperature is 22.0°C



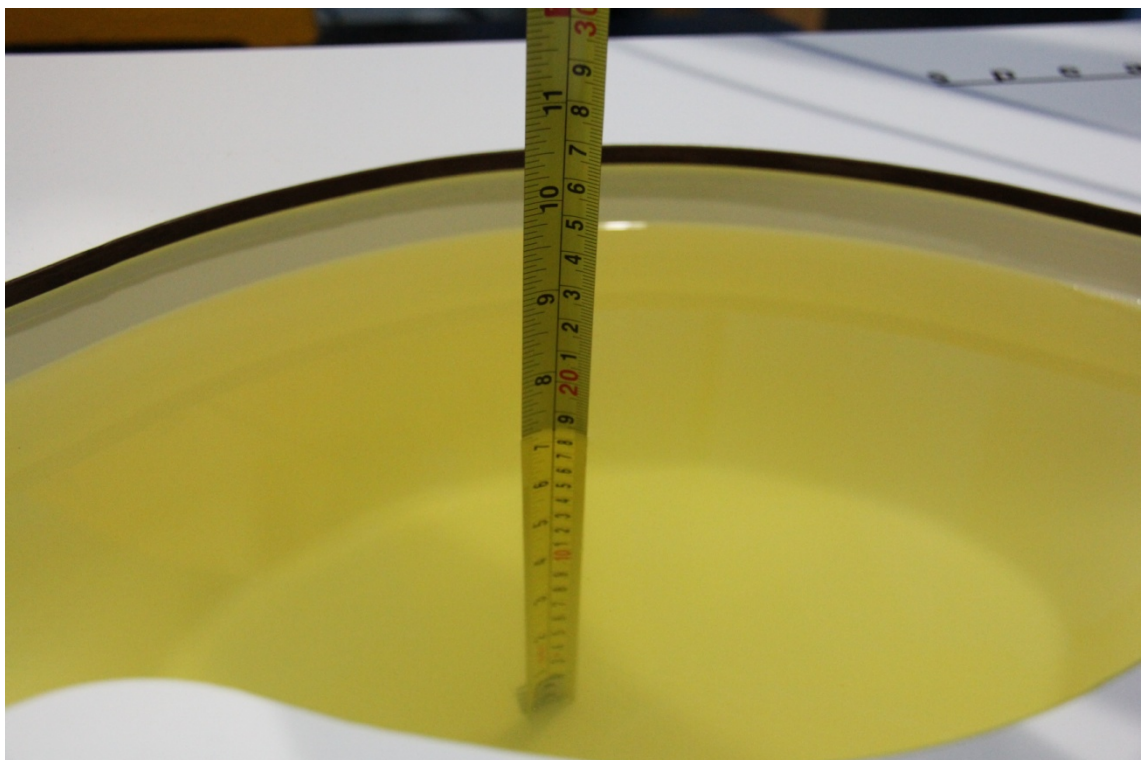
Picture 7-1: Liquid depth in the Head Phantom (835 MHz)



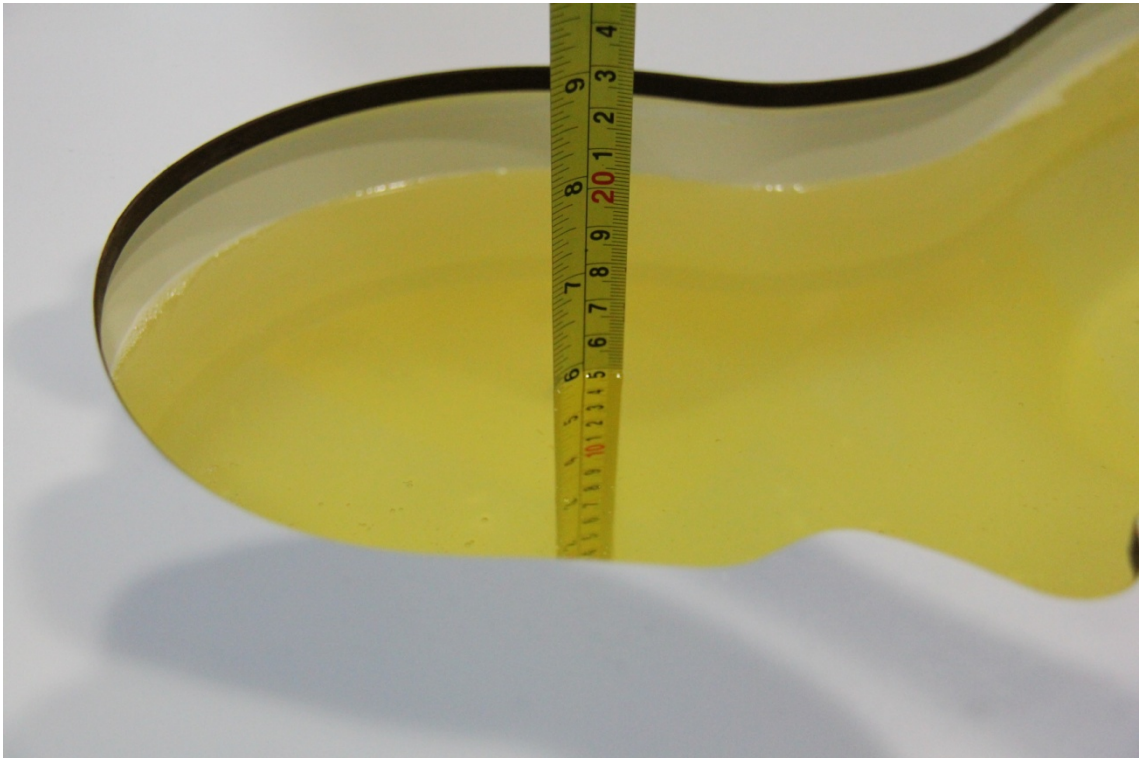
Picture 7-2: Liquid depth in the Flat Phantom (835 MHz)



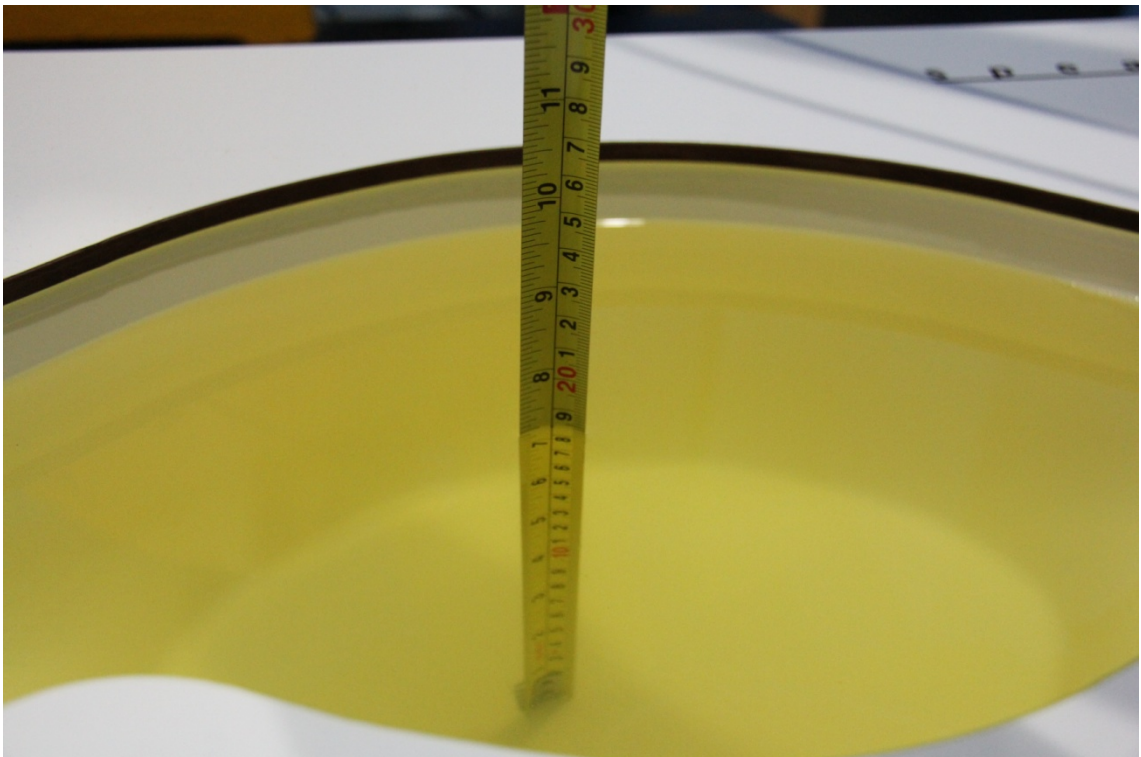
Picture 7-3: Liquid depth in the Head Phantom (1900 MHz)



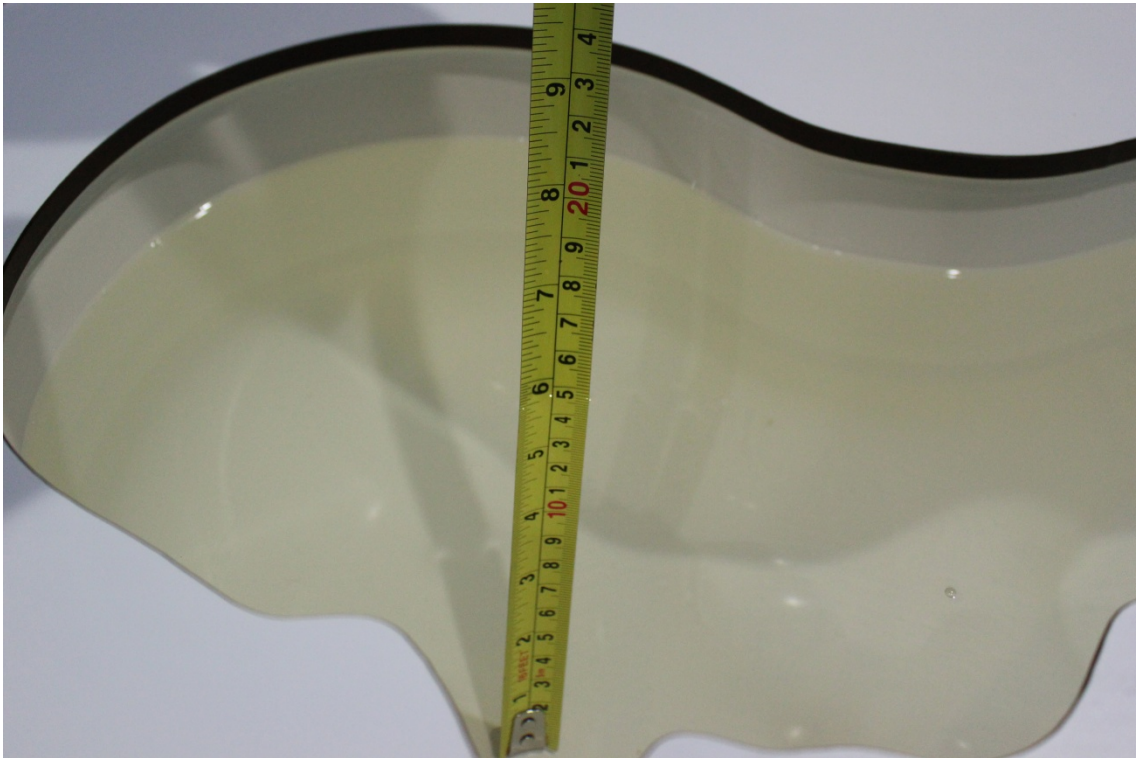
Picture 7-4 Liquid depth in the Flat Phantom (1900MHz)



Picture 7-5 Liquid depth in the Head Phantom (2450MHz)



Picture 7-6 Liquid depth in the Flat Phantom (2450MHz)



Picture 7-7 Liquid depth in the Head Phantom (5GHz)

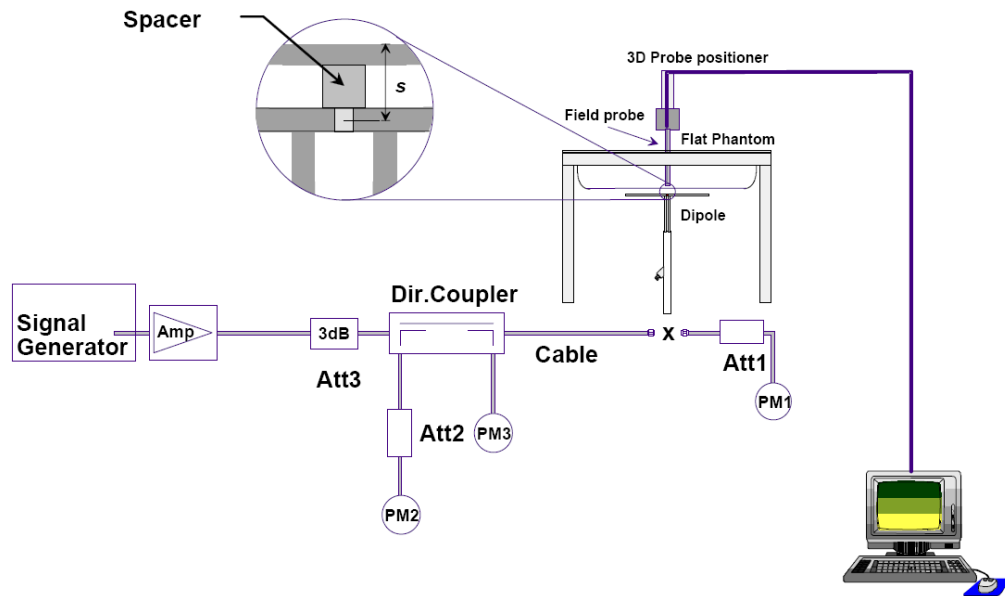


Picture 7-8 Liquid depth in the Flat Phantom (5GHz)

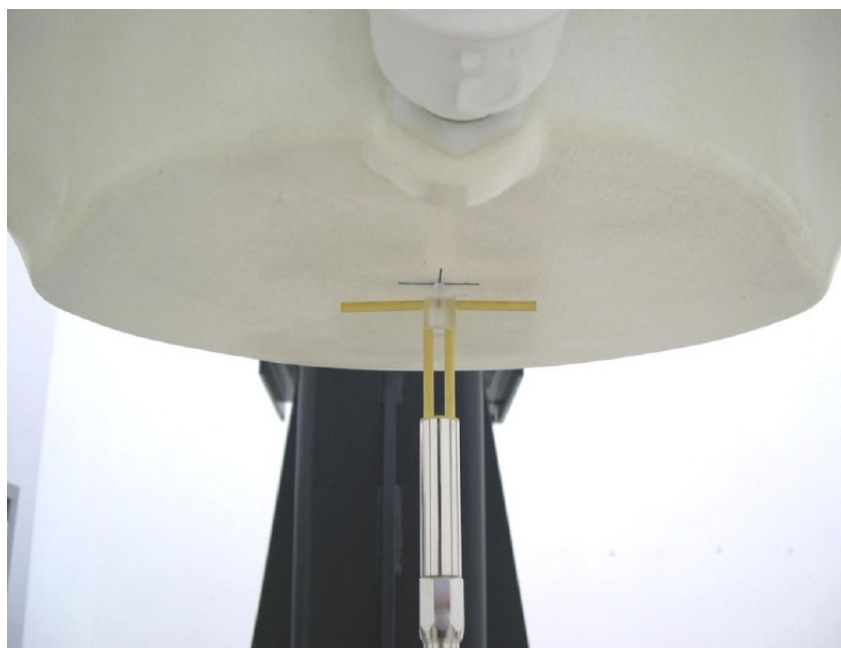
8 System verification

8.1 System Setup

In the simplified setup for system evaluation, the DUT is replaced by a calibrated dipole and the power source is replaced by a continuous wave that comes from a signal generator. The calibrated dipole must be placed beneath the flat phantom section of the SAM twin phantom with the correct distance holder. The distance holder should touch the phantom surface with a light pressure at the reference marking and be oriented parallel to the long side of the phantom. The equipment setup is shown below:



Picture 8.1 System Setup for System Evaluation



Picture 8.2 Photo of Dipole Setup

8.2 System Verification

SAR system verification is required to confirm measurement accuracy, according to the tissue dielectric media, probe calibration points and other system operating parameters required for measuring the SAR of a test device. The system verification must be performed for each frequency band and within the valid range of each probe calibration point required for testing the device.

The system verification results are required that the area scan estimated 1-g SAR is within 3% of the zoom scan 1-g SAR. The details are presented in annex B.

Table 8.1: System Verification of Head

Measurement Date (yyyy-mm-dd)	Frequency	Target value (W/kg)		Measured value (W/kg)		Deviation	
		10 g Average	1 g Average	10 g Average	1 g Average	10 g Average	1 g Average
2014-05-12	835 MHz	6.16	9.44	6.12	9.52	-0.65%	0.85%
2014-05-13	1900 MHz	21.3	40.4	21.00	39.64	-1.41%	-1.88%
2014-05-24	2450 MHz	24.9	53.4	24.68	52.80	-0.88%	-1.12%
2014-05-27	5200 MHz	22.8	79.7	23.50	81.70	3.07%	2.51%
	5300 MHz	23.5	82.1	23.70	82.20	0.85%	0.12%
2014-05-28	5600 MHz	23.5	82.8	24.20	85.00	2.98%	2.66%
	5800 MHz	22.2	78.2	21.70	76.00	-2.25%	-2.81%

Table 8.2: System Verification of Body

Measurement Date (yyyy-mm-dd)	Frequency	Target value (W/kg)		Measured value (W/kg)		Deviation	
		10 g Average	1 g Average	10 g Average	1 g Average	10 g Average	1 g Average
2014-05-12	835 MHz	6.20	9.40	6.40	9.64	3.23%	2.55%
2014-05-13	1900 MHz	21.9	41.3	21.40	40.40	-2.28%	-2.18%
2014-05-24	2450 MHz	23.4	50.4	23.64	51.20	1.03%	1.59%
2014-05-27	5200 MHz	21.0	74.9	20.70	73.80	-1.43%	-1.47%
	5300 MHz	21.4	76.1	20.90	74.50	-2.34%	-2.10%
2014-05-28	5600 MHz	22.1	79.9	21.80	78.30	-1.36%	-2.00%
	5800 MHz	20.5	74.5	21.10	75.50	2.93%	1.34%

9 Measurement Procedures

9.1 Tests to be performed

In order to determine the highest value of the peak spatial-average SAR of a handset, all device positions, configurations and operational modes shall be tested for each frequency band according to steps 1 to 3 below. A flowchart of the test process is shown in picture 9.1.

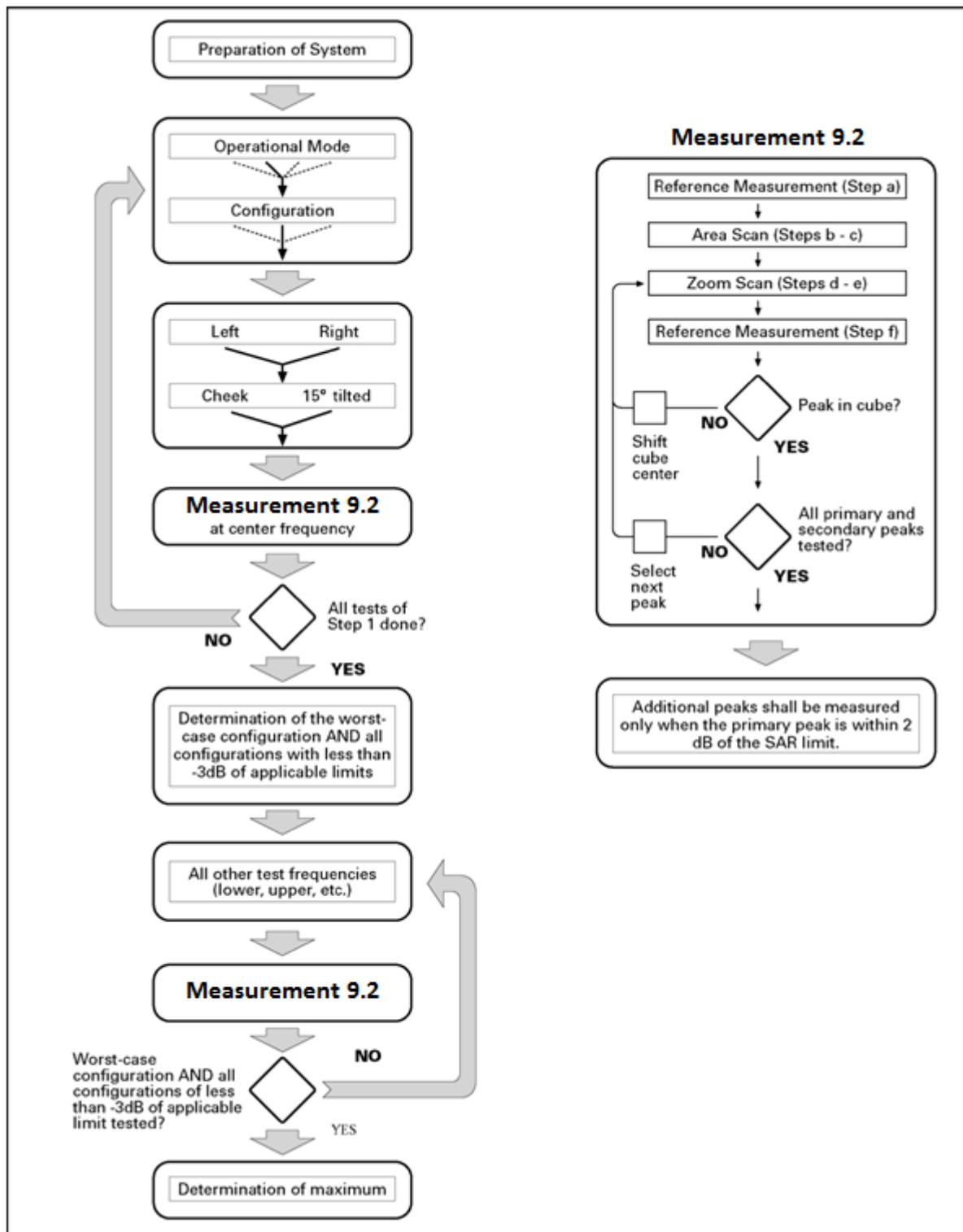
Step 1: The tests described in 9.2 shall be performed at the channel that is closest to the centre of the transmit frequency band (f_c) for:

- a) all device positions (cheek and tilt, for both left and right sides of the SAM phantom, as described in annex D),
- b) all configurations for each device position in a), e.g., antenna extended and retracted, and
- c) all operational modes, e.g., analogue and digital, for each device position in a) and configuration in b) in each frequency band.

If more than three frequencies need to be tested according to 11.1 (i.e., $N_c > 3$), then all frequencies, configurations and modes shall be tested for all of the above test conditions.

Step 2: For the condition providing highest peak spatial-average SAR determined in Step 1, perform all tests described in 9.2 at all other test frequencies, i.e., lowest and highest frequencies. In addition, for all other conditions (device position, configuration and operational mode) where the peak spatial-average SAR value determined in Step 1 is within 3 dB of the applicable SAR limit, it is recommended that all other test frequencies shall be tested as well.

Step 3: Examine all data to determine the highest value of the peak spatial-average SAR found in Steps 1 to 2.



Picture 9.1 Block diagram of the tests to be performed

9.2 General Measurement Procedure

The area and zoom scan resolutions specified in the table below must be applied to the SAR measurements and fully documented in SAR reports to qualify for TCB approval. Probe boundary effect error compensation is required for measurements with the probe tip closer than half a probe tip diameter to the phantom surface. Both the probe tip diameter and sensor offset distance must satisfy measurement protocols; to ensure probe boundary effect errors are minimized and the higher fields closest to the phantom surface can be correctly measured and extrapolated to the phantom surface for computing 1-g SAR. Tolerances of the post-processing algorithms must be verified by the test laboratory for the scan resolutions used in the SAR measurements, according to the reference distribution functions specified in IEEE Std 1528-2003. The results should be documented as part of the system validation records and may be requested to support test results when all the measurement parameters in the following table are not satisfied.

		≤ 3 GHz	> 3 GHz
Maximum distance from closest measurement point (geometric center of probe sensors) to phantom surface		5 ± 1 mm	$\frac{1}{2} \cdot \delta \cdot \ln(2) \pm 0.5$ mm
Maximum probe angle from probe axis to phantom surface normal at the measurement location		$30^\circ \pm 1^\circ$	$20^\circ \pm 1^\circ$
Maximum area scan spatial resolution: $\Delta x_{Area}, \Delta y_{Area}$		≤ 2 GHz: ≤ 15 mm 2 – 3 GHz: ≤ 12 mm	3 – 4 GHz: ≤ 12 mm 4 – 6 GHz: ≤ 10 mm
		When the x or y dimension of the test device, in the measurement plane orientation, is smaller than the above, the measurement resolution must be \leq the corresponding x or y dimension of the test device with at least one measurement point on the test device.	
Maximum zoom scan spatial resolution: $\Delta x_{Zoom}, \Delta y_{Zoom}$		≤ 2 GHz: ≤ 8 mm 2 – 3 GHz: ≤ 5 mm*	3 – 4 GHz: ≤ 5 mm* 4 – 6 GHz: ≤ 4 mm*
Maximum zoom scan spatial resolution, normal to phantom surface	uniform grid: $\Delta z_{Zoom}(n)$	≤ 5 mm	3 – 4 GHz: ≤ 4 mm 4 – 5 GHz: ≤ 3 mm 5 – 6 GHz: ≤ 2 mm
	graded grid	$\Delta z_{Zoom}(1)$: between 1 st two points closest to phantom surface	≤ 4 mm
		$\Delta z_{Zoom}(n>1)$: between subsequent points	$\leq 1.5 \cdot \Delta z_{Zoom}(n-1)$
Minimum zoom scan volume	x, y, z	≥ 30 mm	3 – 4 GHz: ≥ 28 mm 4 – 5 GHz: ≥ 25 mm 5 – 6 GHz: ≥ 22 mm
<p>Note: δ is the penetration depth of a plane-wave at normal incidence to the tissue medium; see draft standard IEEE P1528-2011 for details.</p> <p>* When zoom scan is required and the <i>reported</i> SAR from the area scan based 1-g SAR estimation procedures of KDB 447498 is ≤ 1.4 W/kg, ≤ 8 mm, ≤ 7 mm and ≤ 5 mm zoom scan resolution may be applied, respectively, for 2 GHz to 3 GHz, 3 GHz to 4 GHz and 4 GHz to 6 GHz.</p>			

9.3 WCDMA Measurement Procedures for SAR

The following procedures are applicable to WCDMA handsets operating under 3GPP Release99, Release 5 and Release 6. The default test configuration is to measure SAR with an established radio link between the DUT and a communication test set using a 12.2kbps RMC (reference measurement channel) configured in Test Loop Mode 1. SAR is selectively confirmed for other physical channel configurations (DPCCH & DPDCH_n), HSDPA and HSPA (HSUPA/HSDPA) modes according to output power, exposure conditions and device operating capabilities. Both uplink and downlink should be configured with the same RMC or AMR, when required. SAR for Release 5 HSDPA and Release 6 HSPA are measured using the applicable FRC (fixed reference channel) and E-DCH reference channel configurations. Maximum output power is verified according to applicable versions of 3GPP TS 34.121 and SAR must be measured according to these maximum output conditions. When Maximum Power Reduction (MPR) is not implemented according to Cubic Metric (CM) requirements for Release 6 HSPA, the following procedures do not apply.

For Release 5 HSDPA Data Devices:

Sub-test	β_c	β_d	β_d (SF)	β_c / β_d	β_{hs}	CM/dB
1	2/15	15/15	64	2/15	4/15	0.0
2	12/15	15/15	64	12/15	24/25	1.0
3	15/15	8/15	64	15/8	30/15	1.5
4	15/15	4/15	64	15/4	30/15	1.5

For Release 6 HSPA Data Devices

Sub-test	β_c	β_d	β_d (SF)	β_c / β_d	β_{hs}	β_{ec}	β_{ed}	β_{ed} (SF)	β_{ed} (codes)	CM (dB)	MPR (dB)	AG Index	E-TFCI
1	11/15	15/15	64	11/15	22/15	209/225	1039/225	4	1	3.0	3.0	20	75
2	6/15	15/15	64	6/15	12/15	12/15	12/15	4	1	3.0	3.0	12	67
3	15/15	9/15	64	15/9	30/15	30/15	$\beta_{ed1}:47/15$ $\beta_{ed2}:47/15$	4	2	3.0	3.0	15	92
4	2/15	15/15	64	2/15	4/15	4/15	56/75	4	1	3.0	3.0	17	71
5	15/15	15/15	64	15/15	24/15	30/15	134/15	4	1	2.0	2.0	21	81

9.4 Bluetooth & Wi-Fi Measurement Procedures for SAR

Normal network operating configurations are not suitable for measuring the SAR of 802.11 transmitters in general. Unpredictable fluctuations in network traffic and antenna diversity conditions can introduce undesirable variations in SAR results. The SAR for these devices should be measured using chipset based test mode software to ensure that the results are consistent and reliable.

Chipset based test mode software is hardware dependent and generally varies among manufacturers. The device operating parameters established in a test mode for SAR measurements must be identical to those programmed in production units, including output power levels, amplifier gain settings and other RF performance tuning parameters. The test frequencies should correspond to actual channel frequencies defined for domestic use. SAR for devices with switched diversity should be measured with only one antenna transmitting at a time during each SAR measurement, according to a fixed modulation and data rate. The same data pattern should be used for all measurements.

9.5 Power Drift

To control the output power stability during the SAR test, DASY4 system calculates the power drift by measuring the E-field at the same location at the beginning and at the end of the measurement for each test position. These drift values can be found in Table 14.2 to Table 14.25 labeled as: (Power Drift [dB]). This ensures that the power drift during one measurement is within 5%.

10 Area Scan Based 1-g SAR

10.1 Requirement of KDB

According to the KDB447498 D01 v05, when the implementation is based the specific polynomial fit algorithm as presented at the 29th Bioelectromagnetics Society meeting (2007) and the estimated 1-g SAR is ≤ 1.2 W/kg, a zoom scan measurement is not required provided it is also not needed for any other purpose; for example, if the peak SAR location required for simultaneous transmission SAR test exclusion can be determined accurately by the SAR system or manually to discriminate between distinctive peaks and scattered noisy SAR distributions from area scans.

There must not be any warning or alert messages due to various measurement concerns identified by the SAR system; for example, noise in measurements, peaks too close to scan boundary, peaks are too sharp, spatial resolution and uncertainty issues etc. The SAR system verification must also demonstrate that the area scan estimated 1-g SAR is within 3% of the zoom scan 1-g SAR (See Annex B). When all the SAR results for each exposure condition in a frequency band and wireless mode are based on estimated 1-g SAR, the 1-g SAR for the highest SAR configuration must be determined by a zoom scan.

10.2 Fast SAR Algorithms

The approach is based on the area scan measurement applying a frequency dependent attenuation parameter. This attenuation parameter was empirically determined by analyzing a large number of phones. The MOTOROLA FAST SAR was developed and validated by the MOTOROLA Research Group in Ft. Lauderdale.

In the initial study, an approximation algorithm based on Linear fit was developed. The accuracy of the algorithm has been demonstrated across a broad frequency range (136-2450 MHz) and for both 1- and 10-g averaged SAR using a sample of 264 SAR measurements from 55 wireless handsets. For the sample size studied, the root-mean-squared errors of the algorithm are 1.2% and 5.8% for 1- and 10-g averaged SAR, respectively. The paper describing the algorithm in detail is expected to be published in August 2004 within the Special Issue of Transactions on MTT.

In the second step, the same research group optimized the fitting algorithm to an Polynomial fit whereby the frequency validity was extended to cover the range 30-6000MHz. Details of this study can be found in the BEMS 2007 Proceedings.

Both algorithms are implemented in DASY software.

11 Conducted Output Power

11.1 Manufacturing tolerance

Table 11.1: GSM Speech

GSM 850			
Channel	Channel 251	Channel 190	Channel 128
Target (dBm)	32	32	32
Tune-up (dBm)	33	33	33
GSM 1900			
Channel	Channel 810	Channel 661	Channel 512
Target (dBm)	29	29	29
Tune-up (dBm)	30	30	30

Table 11.2: GPRS and EGPRS

GSM 850 GPRS (GMSK)				
Channel		251	190	128
1 Txslot	Target (dBm)	32	32	32
	Tune-up (dBm)	33	33	33
2 Txslots	Target (dBm)	29	29	29
	Tune-up (dBm)	31	31	31
3 Txslots	Target (dBm)	28	28	28
	Tune-up (dBm)	30.2	30.2	30.2
4 Txslots	Target (dBm)	26.5	26.5	26.5
	Tune-up (dBm)	29	29	29
GSM 850 EGPRS (GMSK)				
Channel		251	190	128
1 Txslot	Target (dBm)	32	32	32
	Tune-up (dBm)	33	33	33
2 Txslots	Target (dBm)	29	29	29
	Tune-up (dBm)	31	31	31
3 Txslots	Target (dBm)	28	28	28
	Tune-up (dBm)	30.2	30.2	30.2
4 Txslots	Target (dBm)	26.5	26.5	26.5
	Tune-up (dBm)	29	29	29
GSM 1900 GPRS (GMSK)				
Channel		810	661	512
1 Txslot	Target (dBm)	29	29	29
	Tune-up (dBm)	30	30	30
2 Txslots	Target (dBm)	26	26	26
	Tune-up (dBm)	28	28	28
3 Txslots	Target (dBm)	24	24	24
	Tune-up (dBm)	26.2	26.2	26.2
4 Txslots	Target (dBm)	22.5	22.5	22.5
	Tune-up (dBm)	25	25	25

GSM 1900 EGPRS (GMSK)				
Channel		810	661	512
1 Txslot	Target (dBm)	29	29	29
	Tune-up (dBm)	30	30	30
2 Txslots	Target (dBm)	26	26	26
	Tune-up (dBm)	28	28	28
3 Txslots	Target (dBm)	24	24	24
	Tune-up (dBm)	26.2	26.2	26.2
4 Txslots	Target (dBm)	22.5	22.5	22.5
	Tune-up (dBm)	25	25	25

Table 11.3: WCDMA

WCDMA 850 CS				
Channel	Channel 4233	Channel 4182	Channel 4132	
Target (dBm)	22.5	22.5	22.5	
Tune-up (dBm)	23	23	23	
HSUPA (sub-test 1~4)				
Channel	Channel 4233	Channel 4182	Channel 4132	
Target (dBm)	19	19	19	
Tune-up (dBm)	20	20	20	
HSUPA (sub-test 5)				
Channel	Channel 4233	Channel 4182	Channel 4132	
Target (dBm)	20	20	20	
Tune-up (dBm)	21	21	21	
WCDMA 1900 CS				
Channel	Channel 9538	Channel 9400	Channel 9262	
Target (dBm)	22.5	22.5	22.5	
Tune-up (dBm)	23.5	23.5	23.5	
HSUPA (sub-test 1/2)				
Channel	Channel 9538	Channel 9400	Channel 9262	
Target (dBm)	20	20	20	
Tune-up (dBm)	21	21	21	
HSUPA (sub-test 3)				
Channel	Channel 9538	Channel 9400	Channel 9262	
Target (dBm)	21	21	21	
Tune-up (dBm)	22	22	22	
HSUPA (sub-test 4)				
Channel	Channel 9538	Channel 9400	Channel 9262	
Target (dBm)	19	19	19	
Tune-up (dBm)	20	20	20	
HSUPA (sub-test 5)				
Channel	Channel 9538	Channel 9400	Channel 9262	
Target (dBm)	21	21	21	
Tune-up (dBm)	22	22	22	

Table 11.4: Bluetooth

GFSK			
Channel	Channel 0	Channel 39	Channel 78
Target (dBm)	-1	-1	-1
Tune-up (dBm)	0	0	0

Table 11.5: WiFi

Band	Target (dBm)	Tune-up (dBm)
802.11b (2.4GHz)	16.5	17.5
802.11g (2.4GHz) channel 1 6Mbps	13.5	14.5
802.11g (2.4GHz) channel 1 other rates	13	14
802.11g (2.4GHz) channel 6	14.5	15.5
802.11g (2.4GHz) channel 11	15.5	16.5
802.11n HT20 (2.4GHz) channel 1	13.5	14.5
802.11n HT20 (2.4GHz) channel 6	15	16
802.11n HT20 (2.4GHz) channel 11	16	17
802.11n HT40 (2.4GHz) channel 1/6	13	14
802.11n HT40 (2.4GHz) channel 11	14.5	15.5
802.11a (5GHz) 6Mbps channel 40	9	10
802.11a (5GHz) 6Mbps other channels	11	12
802.11a (5GHz) 9Mbps channel 40	8	9
802.11a (5GHz) 9Mbps other channels	10	11
802.11a (5GHz) 12Mbps channel 40/44/56/112/149	10	11
802.11a (5GHz) 12Mbps other channels	12	13
802.11a (5GHz) 18Mbps channel 40/44/56/112/157/165	10	11
802.11a (5GHz) 18Mbps other channels	12	13
802.11a (5GHz) 24Mbps channel 40	8	9
802.11a (5GHz) 24Mbps other channels	10	11
802.11a (5GHz) 36Mbps channel 40/149/157/165	8	9
802.11a (5GHz) 36Mbps other channels	10	11
802.11a (5GHz) 48Mbps channel 40/44/157	10	11
802.11a (5GHz) 48Mbps other channels	12	13
802.11a (5GHz) 54Mbps channel 40/44/112/149/157/161	10	11
802.11a (5GHz) 54Mbps other channels	12	13
802.11n HT20 (5GHz) MCS0/1/3/4	10.8	11.8
802.11n HT20 (5GHz) MCS2 channel 36	9	10
802.11n HT20 (5GHz) MCS2 other channels	11	12
802.11n HT20 (5GHz) MCS5 channel 153	10	11
802.11n HT20 (5GHz) MCS5 other channels	11.5	12.5
802.11n HT20 (5GHz) MCS6	11.3	12.3
802.11n HT20 (5GHz) MCS7	11.2	12.2
802.11n HT40 (5GHz) channel 38/46	9.6	10.6
802.11n HT40 (5GHz) channel 54~134	10	11
802.11n HT40 (5GHz) channel 151/159	9	10

11.2 GSM Measurement result

During the process of testing, the EUT was controlled via Agilent Digital Radio Communication tester (E5515C) to ensure the maximum power transmission and proper modulation. This result contains conducted output power for the EUT. In all cases, the measured peak output power should be greater and within 5% than EMI measurement.

Table 11.6: The conducted power measurement results for GSM850/1900

GSM 850MHz	Conducted Power (dBm)		
	Channel 251(848.8MHz)	Channel 190(836.6MHz)	Channel 128(824.2MHz)
	32.2	32.3	32.2
GSM 1900MHz	Conducted Power (dBm)		
	Channel 810(1909.8MHz)	Channel 661(1880MHz)	Channel 512(1850.2MHz)
	28.8	28.8	28.9

Table 11.7: The conducted power measurement results for GPRS and EGPRS

GSM 850 GPRS (GMSK)	Measured Power (dBm)			calculation	Averaged Power (dBm)		
	251	190	128		251	190	128
1 Txslot	32.2	32.3	32.3	-9.03dB	23.17	23.27	23.27
2 Txslots	30.6	30.6	30.5	-6.02dB	24.58	24.58	24.48
3Txslots	29.1	29.1	29.0	-4.26dB	24.84	24.84	24.74
4 Txslots	27.6	27.7	27.6	-3.01dB	24.59	24.69	24.59
GSM 850 EGPRS (GMSK)	Measured Power (dBm)			calculation	Averaged Power (dBm)		
	251	190	128		251	190	128
1 Txslot	32.2	32.2	32.1	-9.03dB	23.17	23.17	23.07
2 Txslots	30.5	30.5	30.4	-6.02dB	24.48	24.48	24.38
3Txslots	29.0	29.0	28.9	-4.26dB	24.74	24.74	24.64
4 Txslots	27.5	27.6	27.5	-3.01dB	24.49	24.59	24.49
PCS1900 GPRS (GMSK)	Measured Power (dBm)			calculation	Averaged Power (dBm)		
	810	661	512		810	661	512
1 Txslot	28.8	28.7	28.8	-9.03dB	19.77	19.67	19.77
2 Txslots	26.8	26.7	26.7	-6.02dB	20.78	20.68	20.68
3Txslots	25.3	25.2	25.2	-4.26dB	21.04	20.94	20.94
4 Txslots	23.9	23.8	23.7	-3.01dB	20.89	20.79	20.69
PCS1900 EGPRS (GMSK)	Measured Power (dBm)			calculation	Averaged Power (dBm)		
	810	661	512		810	661	512
1 Txslot	28.9	28.9	28.9	-9.03dB	19.87	19.87	19.87
2 Txslots	26.9	26.8	26.8	-6.02dB	20.88	20.78	20.78
3Txslots	25.4	25.4	25.4	-4.26dB	21.14	21.14	21.14
4 Txslots	24	23.9	23.9	-3.01dB	20.99	20.89	20.89

NOTES:

1) Division Factors

To average the power, the division factor is as follows:

1TX-slot = 1 transmit time slot out of 8 time slots=> conducted power divided by (8/1) => -9.03dB

2TX-slots = 2 transmit time slots out of 8 time slots=> conducted power divided by (8/2) => -6.02dB

3TX-slots = 3 transmit time slots out of 8 time slots=> conducted power divided by (8/3) => -4.26dB

4TX-slots = 4 transmit time slots out of 8 time slots=> conducted power divided by (8/4) => -3.01dB

According to the conducted power as above, the body measurements are performed with 3Txslots for GSM850 and GSM1900.

Note: According to the KDB941225 D03, “when SAR tests for EDGE or EGPRS mode is necessary, GMSK modulation should be used”.

11.3 WCDMA Measurement result

Table 11.8: The conducted Power for WCDMA850/1900

Item	band	FDDV result		
	ARFCN	4233 (846.6MHz)	4182 (836.4MHz)	4132 (826.4MHz)
WCDMA	\	21.62	21.72	21.68
HSUPA	1	18.74	19.27	19.25
	2	18.72	18.82	18.75
	3	18.74	19.79	19.76
	4	18.19	18.24	18.20
	5	20.18	20.27	20.23
Item	band	FDDII result		
	ARFCN	9538 (1907.6MHz)	9400 (1880MHz)	9262 (1852.4MHz)
WCDMA	\	23.05	23.24	23.34
HSUPA	1	20.38	20.60	20.64
	2	19.92	20.09	20.18
	3	20.89	21.08	21.17
	4	19.39	19.56	19.65
	5	21.40	21.59	21.69

Note: HSUPA body SAR for WCDMA850/1900 are not required, because maximum average output power of each RF channel with HSUPA active is not 1/4 dB higher than that measured without HSUPA&DC-HSDPA.

11.4 Wi-Fi and BT Measurement result

The output power of BT antenna is as following:

Mode	Conducted Power (dBm)		
	Channel 0 (2402MHz)	Channel 39 (2441MHz)	Channel 78 (2480MHz)
GFSK	-0.87	-0.25	-0.27

The average conducted power for Wi-Fi is as following:

802.11b (dBm)

Channel\data rate	1Mbps	2Mbps	5.5Mbps	11Mbps
1	15.72	15.68	15.86	15.76
6	16.68	16.86	16.88	16.75
11	17.09	17.10	17.22	17.19

802.11g (dBm)

Channel\data rate	6Mbps	9Mbps	12Mbps	18Mbps	24Mbps	36Mbps	48Mbps	54Mbps
1	14.01	12.16	13.83	13.88	12.55	12.07	13.79	13.79
6	15.06	13.86	15.43	15.41	13.77	13.74	15.41	15.41
11	16.34	15.52	15.26	15.51	15.42	15.17	15.28	15.23

802.11n (dBm) - HT20 (2.4G)

Channel\data rate	MCS0	MCS1	MCS2	MCS3	MCS4	MCS5	MCS6	MCS7
1	14.06	13.56	13.40	13.64	13.63	14.02	13.78	13.74
6	15.10	15.01	15.09	15.08	15.04	15.70	15.38	15.35
11	16.33	16.41	16.58	15.94	16.52	15.27	15.22	15.18

802.11n (dBm) - HT40 (2.4G)

Channel\data rate	MCS0	MCS1	MCS2	MCS3	MCS4	MCS5	MCS6	MCS7
1	12.83	12.84	12.80	12.77	12.77	13.02	13.02	12.50
6	13.38	13.61	13.85	13.57	13.58	13.82	13.37	13.32
11	15.36	15.10	15.36	14.97	15.00	13.79	13.86	14.37

802.11a (dBm)

Channel\data rate	6Mbps	9Mbps	12Mbps	18Mbps	24Mbps	36Mbps	48Mbps	54Mbps
36(5180 MHz)	11.50	10.28	11.53	12.07	10.06	9.89	11.97	11.37
40(5200 MHz)	9.25	7.95	9.87	9.48	7.90	7.93	9.54	9.48
44(5220 MHz)	11.76	9.63	10.01	10.21	10.27	10.19	10.25	10.05
48(5240 MHz)	11.46	9.84	11.84	11.76	10.17	9.70	11.68	11.67
52(5260 MHz)	11.76	10.29	12.35	12.29	9.75	10.13	12.17	12.18
56(5280 MHz)	11.80	9.75	10.07	10.15	10.17	10.41	11.57	11.54
60(5300 MHz)	11.63	10.41	11.93	11.83	10.55	9.77	12.21	12.24
64(5320 MHz)	11.75	10.56	12.41	12.24	9.92	10.45	12.52	12.24
100(5500 MHz)	11.37	9.69	11.95	11.41	9.62	9.78	11.47	11.58
104(5520 MHz)	11.16	10.30	11.84	11.59	10.33	9.92	11.96	12.15
108(5540 MHz)	11.62	10.03	12.65	12.21	10.04	9.88	12.10	12.08
112(5560 MHz)	11.69	10.50	10.46	10.12	10.23	10.15	11.90	9.99
116(5580 MHz)	11.62	10.72	12.69	12.22	10.19	10.60	12.30	12.05
132(5660 MHz)	11.54	10.11	12.36	12.33	10.33	9.96	11.70	12.19
136(5680 MHz)	11.50	10.07	11.99	12.51	10.26	9.94	12.13	12.16
140(5700 MHz)	11.52	10.18	11.91	11.87	9.64	9.82	11.77	11.49
149(5745 MHz)	10.42	9.14	10.86	11.31	9.33	8.81	11.19	10.73
153(5765 MHz)	10.79	9.61	11.10	11.32	9.32	9.04	11.21	11.20
157(5785 MHz)	10.47	9.51	11.24	10.74	9.00	8.71	10.63	10.88
161(5805 MHz)	10.90	9.07	11.00	11.14	9.23	9.13	11.08	10.85
165(5825 MHz)	10.49	9.52	11.46	10.96	9.05	8.95	11.31	11.08

802.11n (dBm) - HT20 (5G)

Channel\data rate	MCS0	MCS1	MCS2	MCS3	MCS4	MCS5	MCS6	MCS7
36(5180 MHz)	10.82	10.99	8.79	10.56	11.04	11.10	11.49	11.69
40(5200 MHz)	10.74	10.49	10.75	11.26	10.55	11.60	11.68	11.12
44(5220 MHz)	10.73	10.63	11.18	11.19	10.75	12.04	11.15	11.26
48(5240 MHz)	11.35	10.85	10.95	10.95	10.94	11.53	11.33	12.02
52(5260 MHz)	11.13	11.55	11.61	11.20	11.57	12.25	12.04	11.47
56(5280 MHz)	11.11	11.37	11.24	11.69	10.91	12.46	11.81	11.46
60(5300 MHz)	11.16	11.20	11.26	11.75	11.19	11.62	11.88	11.83
64(5320 MHz)	11.27	11.75	11.38	10.98	11.28	12.15	12.15	11.82
100(5500 MHz)	11.03	10.82	11.34	10.68	10.92	11.66	11.44	11.37
104(5520 MHz)	11.16	10.74	11.24	10.77	10.76	11.60	11.86	11.33
108(5540 MHz)	11.01	10.85	11.21	10.81	11.19	11.70	11.77	11.24
112(5560 MHz)	11.11	10.82	11.12	10.90	10.87	11.58	11.67	11.37
116(5580 MHz)	11.65	11.33	10.99	10.97	10.95	11.64	12.20	11.43
132(5660 MHz)	10.73	10.65	10.73	11.21	11.16	11.68	11.98	11.37
136(5680 MHz)	10.92	10.89	11.16	10.97	11.31	11.44	11.52	11.65
140(5700 MHz)	11.11	10.72	10.79	10.81	10.92	11.32	11.57	11.27
149(5745 MHz)	10.11	9.84	10.18	9.98	9.92	10.57	10.83	10.52
153(5765 MHz)	9.95	9.86	10.60	10.18	9.97	10.40	10.43	10.36
157(5785 MHz)	10.51	10.22	10.09	9.90	10.35	11.05	10.80	10.52
161(5805 MHz)	10.41	10.04	10.12	10.57	10.16	10.87	10.88	10.82
165(5825 MHz)	10.49	10.16	10.67	10.48	10.22	10.80	10.77	11.21

802.11n (dBm) - HT40 (5G)

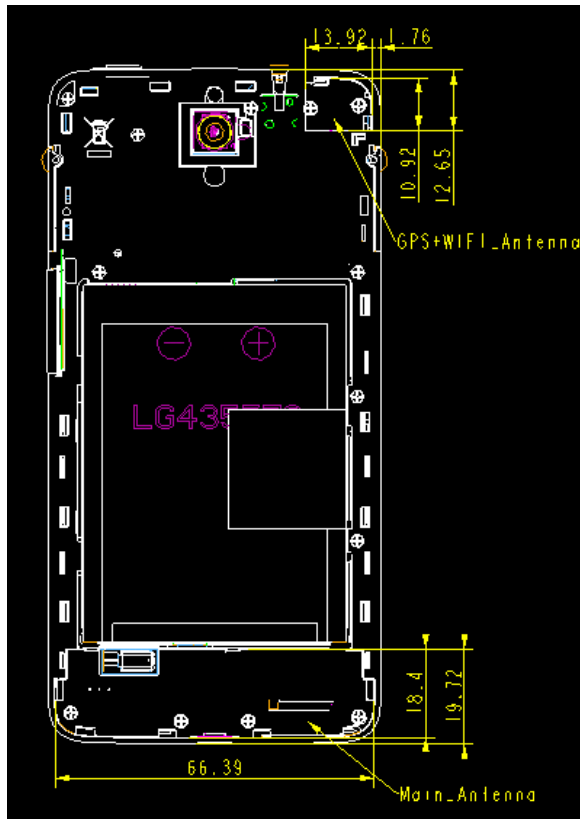
Channel\data rate	MCS0	MCS1	MCS2	MCS3	MCS4	MCS5	MCS6	MCS7
38(5190 MHz)	9.87	9.89	10.05	9.71	9.24	9.89	10.25	8.62
46(5230 MHz)	10.27	10.51	9.71	9.61	9.54	9.64	10.52	10.05
54(5270 MHz)	10.22	9.99	9.97	10.36	9.77	10.31	10.75	10.62
62(5310 MHz)	10.61	10.13	10.55	10.01	9.93	10.39	10.47	10.22
102(5510 MHz)	10.42	9.65	10.06	10.08	9.56	10.03	10.67	10.60
110(5550 MHz)	9.92	10.24	9.85	9.78	10.08	10.44	11.09	10.21
134(5670 MHz)	10.30	9.67	9.83	9.71	9.67	10.22	9.89	10.46
151(5755 MHz)	9.36	8.89	9.07	8.71	8.68	8.98	9.55	9.41
159(5795 MHz)	9.19	8.99	9.17	9.09	8.77	9.08	9.68	9.29

12 Simultaneous TX SAR Considerations

12.1 Introduction

The following procedures adopted from “FCC SAR Considerations for Cell Phones with Multiple Transmitters” are applicable to handsets with built-in unlicensed transmitters such as 802.11 a/b/g and Bluetooth devices which may simultaneously transmit with the licensed transmitter. For this device, the BT and Wi-Fi can transmit simultaneous with other transmitters.

12.2 Transmit Antenna Separation Distances



Picture 12.1 Antenna Locations

12.3 SAR Measurement Positions

According to the KDB941225 D06 Hot Spot SAR v01, the edges with less than 2.5 cm distance to the antennas need to be tested for SAR.

SAR measurement positions						
Mode	Front	Rear	Left edge	Right edge	Top edge	Bottom edge
Main antenna	Yes	Yes	Yes	Yes	No	Yes
WLAN	Yes	Yes	Yes	No	Yes	No

12.4 Standalone SAR Test Exclusion Considerations

Standalone 1-g head or body SAR evaluation by measurement or numerical simulation is not required when the corresponding SAR Exclusion Threshold condition, listed below, is satisfied. The 1-g SAR test exclusion threshold for 100 MHz to 6 GHz at test separation distances ≤ 50 mm are determined by:

$[(\text{max. power of channel, including tune-up tolerance, mW}) / (\text{min. test separation distance, mm})] \cdot [\sqrt{f(\text{GHz})}] \leq 3.0$ for 1-g SAR, where

- $f(\text{GHz})$ is the RF channel transmit frequency in GHz
- Power and distance are rounded to the nearest mW and mm before calculation
- The result is rounded to one decimal place for comparison

Table 12.1: Standalone SAR test exclusion considerations

Band/Mode	F(GHz)	Position	SAR test exclusion threshold (mW)	RF output power		SAR test exclusion
				dBm	mW	
Bluetooth	2.441	Head	9.60	-0.25	0.94	Yes
		Body	19.20	-0.25	0.94	Yes
2.4GHz WLAN 802.11 b	2.45	Head	9.58	17.22	52.72	No
		Body	19.17	17.22	52.72	No
WLAN 5GHz	5.2	Head	6.58	11.76	15.00	No
		Body	13.16	11.76	15.00	No
	5.3	Head	6.52	12.24	16.75	No
		Body	13.03	12.24	16.75	No
	5.6	Head	6.34	12.69	18.58	No
		Body	12.68	12.69	18.58	No
	5.8	Head	6.23	11.46	14.00	No
		Body	12.46	11.46	14.00	No

13 Evaluation of Simultaneous

Table 13.1: The sum of reported SAR values for main antenna and WiFi

	Position	Main antenna	WiFi	Sum
Highest reported SAR value for Head	Left hand, Touch cheek	0.39	0.33	0.72
	Right hand, Touch cheek	0.37	0.75	1.12
Highest reported SAR value for Body	Rear	0.91	0.13	1.04
	Bottom	1.15	/	1.15

Table 13.2: The sum of reported SAR values for main antenna and Bluetooth

	Position	Main antenna	BT*	Sum
Highest reported SAR value for Head	Left hand, Touch cheek	0.39	0.04	0.43
Highest reported SAR value for Body	Bottom	1.15	0.02	1.17

BT* - Estimated SAR for Bluetooth (see the table 13.3)

Table 13.3: Estimated SAR for Bluetooth

Mode/Band	F (GHz)	Position	Distance (mm)	Upper limit of power *		Estimated _{1g} (W/kg)
				dBm	mW	
Bluetooth	2.441	Head	5	0	1	0.04
Bluetooth	2.441	Body	10	0	1	0.02

* - Maximum possible output power declared by manufacturer

When standalone SAR test exclusion applies to an antenna that transmits simultaneously with other antennas, the standalone SAR must be estimated according to following to determine simultaneous transmission SAR test exclusion:

(max. power of channel, including tune-up tolerance, mW)/(min. test separation distance, mm)]·[√f(GHz)/x] W/kg for test separation distances ≤ 50 mm;

where x = 7.5 for 1-g SAR.

When the minimum test separation distance is < 5 mm, a distance of 5 mm is applied to determine SAR test exclusion

Conclusion:

According to the above tables, the sum of reported SAR values is < 1.6W/kg. So the simultaneous transmission SAR with volume scans is not required.

14 SAR Test Result

It is determined by user manual for the distance between the EUT and the phantom bottom.

The distance is 10mm and just applied to the condition of body worn accessory.

It is performed for all SAR measurements with area scan based 1-g SAR estimation (Fast SAR). A zoom scan measurement is added when the estimated 1-g SAR is the highest measured SAR in each exposure configuration, wireless mode and frequency band combination or more than 1.2W/kg.

The calculated SAR is obtained by the following formula:

$$\text{Reported SAR} = \text{Measured SAR} \times 10^{(P_{\text{Target}} - P_{\text{Measured}})/10}$$

Where P_{Target} is the power of manufacturing upper limit;

P_{Measured} is the measured power in chapter 11.

Table 14.1: Duty Cycle

Mode	Duty Cycle
Speech for GSM850/1900	1:8.3
GPRS&EGPRS	1:2.67
WCDMA850/1900& WiFi	1:1

14.1 SAR results for Fast SAR

Table 14.2: SAR Values (GSM 850 MHz Band - Head)

Frequency		Side	Test Position	Figure No.	Conducted Power (dBm)	Max. tune-up Power (dBm)	Ambient Temperature: 22.4 °C		Liquid Temperature: 21.9 °C		Power Drift (dB)
MHz	Ch.						Measured SAR(10g) (W/kg)	Reported SAR(10g) (W/kg)	Measured SAR(1g) (W/kg)	Reported SAR(1g) (W/kg)	
848.8	251	Left	Touch	/	32.2	33	0.155	0.19	0.227	0.27	-0.19
836.6	190	Left	Touch	/	32.3	33	0.197	0.23	0.262	0.31	-0.08
824.2	128	Left	Touch	/	32.2	33	0.146	0.18	0.213	0.26	-0.12
848.8	251	Left	Tilt	/	32.2	33	0.099	0.12	0.140	0.17	0.01
836.6	190	Left	Tilt	/	32.3	33	0.117	0.14	0.153	0.18	-0.02
824.2	128	Left	Tilt	/	32.2	33	0.090	0.11	0.126	0.15	-0.07
848.8	251	Right	Touch	/	32.2	33	0.196	0.24	0.286	0.34	0.03
836.6	190	Right	Touch	Fig.1	32.3	33	0.242	0.28	0.316	0.37	0.01
824.2	128	Right	Touch	/	32.2	33	0.167	0.20	0.242	0.29	-0.02
848.8	251	Right	Tilt	/	32.2	33	0.133	0.16	0.191	0.23	0.02
836.6	190	Right	Tilt	/	32.3	33	0.151	0.18	0.216	0.25	0.06
824.2	128	Right	Tilt	/	32.2	33	0.124	0.15	0.178	0.21	-0.06

Table 14.3: SAR Values (GSM 850 MHz Band - Body)

Frequency		Mode (number of timeslots)	Test Position	Figure No.	Conducted Power (dBm)	Max. tune-up Power (dBm)	Measured SAR(10g) (W/kg)	Reported SAR(10g) (W/kg)	Measured SAR(1g) (W/kg)	Reported SAR(1g) (W/kg)	Power Drift (dB)	
MHz	Ch.											
		Ambient Temperature: 22.4 °C						Liquid Temperature: 21.9 °C				
836.6	190	GPRS (3)	Front	/	29.1	30.2	0.352	0.45	0.488	0.63	-0.01	
848.8	251	GPRS (3)	Rear	/	29.1	30.2	0.455	0.59	0.633	0.82	0.01	
836.6	190	GPRS (3)	Rear	Fig.2	29.1	30.2	0.548	0.71	0.708	0.91	-0.06	
824.2	128	GPRS (3)	Rear	/	29.0	30.2	0.452	0.60	0.628	0.83	0.00	
836.6	190	GPRS (3)	Left	/	29.1	30.2	0.293	0.38	0.425	0.55	0.01	
836.6	190	GPRS (3)	Right	/	29.1	30.2	0.374	0.48	0.542	0.70	0.02	
836.6	190	GPRS (3)	Bottom	/	29.1	30.2	0.258	0.33	0.402	0.52	-0.04	
836.6	190	EGPRS (3)	Rear	/	29.0	30.2	0.419	0.55	0.583	0.77	-0.01	
836.6	190	Speech	Rear Headset1	/	32.3	33	0.322	0.38	0.481	0.57	0.03	
836.6	190	Speech	Rear Headset2	/	32.3	33	0.314	0.37	0.437	0.51	0.03	
836.6	190	Speech	Rear Headset3	/	32.3	33	0.288	0.34	0.446	0.52	-0.01	

Note1: The distance between the EUT and the phantom bottom is 10mm.

Note2: Headset1 is CCB3001A1BC2, Headset2 is CCB3001A1BC4, Headset3 is CCA0001A10C9.

Table 14.4: SAR Values (GSM 1900 MHz Band - Head)

Frequency		Side	Test Position	Figure No.	Conducted Power (dBm)	Max. tune-up Power (dBm)	Measured SAR(10g) (W/kg)	Reported SAR(10g) (W/kg)	Measured SAR(1g) (W/kg)	Reported SAR(1g) (W/kg)	Power Drift (dB)	
MHz	Ch.											
		Ambient Temperature: 22.3 °C						Liquid Temperature: 21.8 °C				
1909.8	810	Left	Touch	/	28.8	30	0.065	0.09	0.114	0.15	0.12	
1880	661	Left	Touch	Fig.3	28.8	30	0.087	0.11	0.147	0.19	0.09	
1850.2	512	Left	Touch	/	28.9	30	0.053	0.07	0.094	0.12	0.17	
1909.8	810	Left	Tilt	/	28.8	30	0.027	0.04	0.047	0.06	0.18	
1880	661	Left	Tilt	/	28.8	30	0.024	0.03	0.041	0.05	0.07	
1850.2	512	Left	Tilt	/	28.9	30	0.018	0.02	0.032	0.04	0.17	
1909.8	810	Right	Touch	/	28.8	30	0.046	0.06	0.082	0.11	0.11	
1880	661	Right	Touch	/	28.8	30	0.045	0.06	0.078	0.10	0.11	
1850.2	512	Right	Touch	/	28.9	30	0.036	0.05	0.062	0.08	-0.02	
1909.8	810	Right	Tilt	/	28.8	30	0.031	0.04	0.054	0.07	0.00	
1880	661	Right	Tilt	/	28.8	30	0.028	0.04	0.049	0.06	0.17	
1850.2	512	Right	Tilt	/	28.9	30	0.023	0.03	0.040	0.05	0.16	

Table 14.5: SAR Values (GSM 1900 MHz Band - Body)

Frequency		Mode (number of timeslots)	Test Position	Figure No.	Conducted Power (dBm)	Max. tune-up Power (dBm)	Measured SAR(10g) (W/kg)	Reported SAR(10g) (W/kg)	Measured SAR(1g) (W/kg)	Reported SAR(1g) (W/kg)	Power Drift (dB)
MHz	Ch.										
Ambient Temperature: 22.3 °C Liquid Temperature: 21.8 °C											
1880	661	GPRS (3)	Front	/	25.2	26.2	0.295	0.37	0.521	0.66	-0.02
1880	661	GPRS (3)	Rear	/	25.2	26.2	0.325	0.41	0.580	0.73	0.09
1880	661	GPRS (3)	Left	/	25.2	26.2	0.052	0.07	0.087	0.11	0.05
1880	661	GPRS (3)	Right	/	25.2	26.2	0.075	0.09	0.147	0.19	0.27
1909.8	810	GPRS (3)	Bottom	Fig.4	25.3	26.2	0.383	0.47	0.742	0.91	-0.04
1880	661	GPRS (3)	Bottom	/	25.2	26.2	0.326	0.41	0.601	0.76	0.19
1850.2	512	GPRS (3)	Bottom	/	25.2	26.2	0.263	0.33	0.519	0.65	0.17
1909.8	810	EGPRS (3)	Rear	/	25.4	26.2	0.261	0.31	0.536	0.64	-0.07
1909.8	810	Speech	Bottom Headset1	/	28.8	30	0.349	0.46	0.692	0.91	0.06
1909.8	810	Speech	Bottom Headset2	/	28.8	30	0.330	0.44	0.663	0.87	0.12
1909.8	810	Speech	Bottom Headset3	/	28.8	30	0.329	0.43	0.655	0.86	0.12

Note1: The distance between the EUT and the phantom bottom is 10mm.

Note2: Headset1 is CCB3001A1BC2, Headset2 is CCB3001A1BC4, Headset3 is CCA0001A10C9.

Table 14.6: SAR Values (WCDMA 850 MHz Band - Head)

Frequency		Side	Test Position	Figure No.	Conducted Power (dBm)	Max. tune-up Power (dBm)	Measured SAR(10g) (W/kg)	Reported SAR(10g) (W/kg)	Measured SAR(1g) (W/kg)	Reported SAR(1g) (W/kg)	Power Drift (dB)
MHz	Ch.										
Ambient Temperature: 22.4 °C Liquid Temperature: 21.9 °C											
846.6	4233	Left	Touch	/	21.62	23	0.148	0.20	0.212	0.29	0.18
836.4	4182	Left	Touch	/	21.72	23	0.138	0.19	0.198	0.27	0.19
826.4	4132	Left	Touch	/	21.68	23	0.110	0.15	0.158	0.21	0.09
846.6	4233	Left	Tilt	/	21.62	23	0.090	0.12	0.128	0.18	0.09
836.4	4182	Left	Tilt	/	21.72	23	0.086	0.12	0.121	0.16	0.08
826.4	4132	Left	Tilt	/	21.68	23	0.072	0.10	0.102	0.14	0.13
846.6	4233	Right	Touch	Fig.5	21.62	23	0.181	0.25	0.240	0.33	0.12
836.4	4182	Right	Touch	/	21.72	23	0.155	0.21	0.219	0.29	0.14
826.4	4132	Right	Touch	/	21.68	23	0.120	0.16	0.170	0.23	-0.03
846.6	4233	Right	Tilt	/	21.62	23	0.103	0.14	0.145	0.20	0.06
836.4	4182	Right	Tilt	/	21.72	23	0.097	0.13	0.136	0.18	0.05
826.4	4132	Right	Tilt	/	21.68	23	0.080	0.11	0.113	0.15	0.02

Table 14.7: SAR Values (WCDMA 850 MHz Band - Body)

Frequency		Test Position	Figure No.	Conducted Power (dBm)	Max. tune-up Power (dBm)	Measured SAR(10g) (W/kg)	Reported SAR(10g) (W/kg)	Measured SAR(1g) (W/kg)	Reported SAR(1g) (W/kg)	Power Drift (dB)
MHz	Ch.									
Ambient Temperature: 22.4 °C Liquid Temperature: 21.9 °C										
836.4	4182	Front	/	21.72	23	0.221	0.30	0.306	0.41	-0.04
846.6	4233	Rear	Fig.6	21.62	23	0.406	0.56	0.525	0.72	-0.01
836.4	4182	Rear	/	21.72	23	0.352	0.47	0.489	0.66	-0.01
826.4	4132	Rear	/	21.68	23	0.336	0.46	0.466	0.63	-0.01
836.4	4182	Left	/	21.72	23	0.174	0.23	0.252	0.34	-0.04
836.4	4182	Right	/	21.72	23	0.202	0.27	0.292	0.39	0.01
836.4	4182	Bottom	/	21.72	23	0.140	0.19	0.215	0.29	-0.02
846.6	4233	Rear Headset1	/	21.62	23	0.343	0.47	0.504	0.69	-0.02
846.6	4233	Rear Headset2	/	21.62	23	0.325	0.45	0.486	0.67	0.01
846.6	4233	Rear Headset3	/	21.62	23	0.310	0.43	0.501	0.69	-0.01

Note1: The distance between the EUT and the phantom bottom is 10mm.

Note2: Headset1 is CCB3001A1BC2, Headset2 is CCB3001A1BC4, Headset3 is CCA0001A10C9.

Table 14.8: SAR Values (WCDMA 1900 MHz Band - Head)

Frequency		Side	Test Position	Figure No.	Conducted Power (dBm)	Max. tune-up Power (dBm)	Measured SAR(10g) (W/kg)	Reported SAR(10g) (W/kg)	Measured SAR(1g) (W/kg)	Reported SAR(1g) (W/kg)	Power Drift (dB)
MHz	Ch.										
Ambient Temperature: 22.3 °C Liquid Temperature: 21.8 °C											
1907.6	9538	Left	Touch	/	23.05	23.5	0.148	0.16	0.254	0.28	0.13
1880	9400	Left	Touch	Fig.7	23.24	23.5	0.223	0.24	0.370	0.39	0.17
1852.4	9262	Left	Touch	/	23.34	23.5	0.165	0.17	0.278	0.29	0.15
1907.6	9538	Left	Tilt	/	23.05	23.5	0.056	0.06	0.096	0.11	0.12
1880	9400	Left	Tilt	/	23.24	23.5	0.070	0.07	0.121	0.13	0.11
1852.4	9262	Left	Tilt	/	23.34	23.5	0.055	0.06	0.099	0.10	0.03
1907.6	9538	Right	Touch	/	23.05	23.5	0.123	0.14	0.223	0.25	0.14
1880	9400	Right	Touch	/	23.24	23.5	0.140	0.15	0.256	0.27	-0.05
1852.4	9262	Right	Touch	/	23.34	23.5	0.120	0.12	0.221	0.23	0.12
1907.6	9538	Right	Tilt	/	23.05	23.5	0.060	0.07	0.112	0.12	0.11
1880	9400	Right	Tilt	/	23.24	23.5	0.069	0.07	0.127	0.13	0.08
1852.4	9262	Right	Tilt	/	23.34	23.5	0.057	0.06	0.105	0.11	0.09

Table 14.9: SAR Values (WCDMA 1900 MHz Band - Body)

Frequency		Test Position	Figure No.	Conducted Power (dBm)	Max. tune-up Power (dBm)	Measured SAR(10g) (W/kg)	Reported SAR(10g) (W/kg)	Measured SAR(1g) (W/kg)	Reported SAR(1g) (W/kg)	Power Drift (dB)	
MHz	Ch.										
		Ambient Temperature: 22.3 °C				Liquid Temperature: 21.8 °C					
1880	9400	Front	/	23.24	23.5	0.323	0.34	0.575	0.61	-0.08	
1880	9400	Rear	/	23.24	23.5	0.418	0.44	0.747	0.79	0.00	
1880	9400	Left	/	23.24	23.5	0.067	0.07	0.109	0.12	-0.10	
1880	9400	Right	/	23.24	23.5	0.115	0.12	0.217	0.23	0.11	
1907.6	9538	Bottom	Fig.8	23.05	23.5	0.535	0.59	1.04	1.15	0.09	
1880	9400	Bottom	/	23.24	23.5	0.471	0.50	0.945	1.00	-0.04	
1852.4	9262	Bottom	/	23.34	23.5	0.457	0.47	0.914	0.95	0.10	
1907.6	9538	Bottom Headset1	/	23.05	23.5	0.499	0.55	0.957	1.06	-0.05	
1907.6	9538	Bottom Headset2	/	23.05	23.5	0.489	0.54	0.948	1.05	-0.03	
1907.6	9538	Bottom Headset3	/	23.05	23.5	0.497	0.55	0.951	1.05	-0.01	

Note1: The distance between the EUT and the phantom bottom is 10mm.

Note2: Headset1 is CCB3001A1BC2, Headset2 is CCB3001A1BC4, Headset3 is CCA0001A10C9.

Table 14.10: SAR Values (Wi-Fi 802.11b - Head)

Frequency		Side	Test Position	Figure No.	Conducted Power (dBm)	Max. tune-up Power (dBm)	Measured SAR(10g) (W/kg)	Reported SAR(10g) (W/kg)	Measured SAR(1g) (W/kg)	Reported SAR(1g) (W/kg)	Power Drift (dB)
MHz	Ch.										
		Ambient Temperature: 22.2 °C				Liquid Temperature: 21.7 °C					
2462	11	Left	Touch	/	17.09	17.5	0.168	0.18	0.296	0.33	-0.16
2462	11	Left	Tilt	/	17.09	17.5	0.219	0.24	0.436	0.48	0.09
2462	11	Right	Touch	Fig.9	17.09	17.5	0.324	0.36	0.680	0.75	0.03
2462	11	Right	Tilt	/	17.09	17.5	0.232	0.25	0.487	0.54	-0.15

Table 14.11: SAR Values (Wi-Fi 802.11b - Body)

Frequency		Test Position	Figure No.	Conducted Power (dBm)	Max. tune-up Power (dBm)	Measured SAR(10g) (W/kg)	Reported SAR(10g) (W/kg)	Measured SAR(1g) (W/kg)	Reported SAR(1g) (W/kg)	Power Drift (dB)	
MHz	Ch.										
		Ambient Temperature: 22.2 °C				Liquid Temperature: 21.7 °C					
2462	11	Front	/	17.09	17.5	0.040	0.04	0.076	0.08	0.05	
2462	11	Rear	Fig.10	17.09	17.5	0.055	0.06	0.118	0.13	0.12	
2462	11	Left	/	17.09	17.5	0.021	0.02	0.043	0.05	0.18	
2462	11	Top	/	17.09	17.5	0.050	0.05	0.098	0.11	0.15	

Note1: The distance between the EUT and the phantom bottom is 10mm.

Table 14.12: SAR Values (Wi-Fi 802.11a - Head)

Frequency		Side	Test Position	Figure No.	Ambient Temperature: 22.2 °C		Liquid Temperature: 21.7 °C				Power Drift (dB)
MHz	Ch.				Conducted Power (dBm)	Max. tune-up Power (dBm)	Measured SAR(10g) (W/kg)	Reported SAR(10g) (W/kg)	Measured SAR(1g) (W/kg)	Reported SAR(1g) (W/kg)	
5220	44	Left	Touch	/	11.76	12	0.006	0.01	0.029	0.03	0.18
5220	44	Left	Tilt	/	11.76	12	0.001	0.00	0.035	0.04	0.15
5220	44	Right	Touch	/	11.76	12	0.038	0.04	0.174	0.18	-0.14
5220	44	Right	Tilt	/	11.76	12	0.011	0.01	0.063	0.07	-0.15
5280	56	Left	Touch	/	11.80	12	0.003	0.00	0.025	0.03	0.19
5280	56	Left	Tilt	/	11.80	12	0.016	0.02	0.060	0.06	0.17
5280	56	Right	Touch	Fig.11	11.80	12	0.048	0.05	0.212	0.22	-0.17
5280	56	Right	Tilt	/	11.80	12	0.008	0.01	0.036	0.04	-0.18
5560	112	Left	Touch	/	11.69	12	NA	NA	NA	NA	NA
5560	112	Left	Tilt	/	11.69	12	NA	NA	NA	NA	NA
5560	112	Right	Touch	/	11.69	12	NA	NA	NA	NA	NA
5560	112	Right	Tilt	/	11.69	12	NA	NA	NA	NA	NA
5805	161	Left	Touch	/	10.90	12	NA	NA	NA	NA	NA
5805	161	Left	Tilt	/	10.90	12	NA	NA	NA	NA	NA
5805	161	Right	Touch	/	10.90	12	NA	NA	NA	NA	NA
5805	161	Right	Tilt	/	10.90	12	NA	NA	NA	NA	NA

NA - The SAR values are too low for some positions so that the system can't show them by SEMCAD.

Table 14.13: SAR Values (Wi-Fi 802.11a - Body)

Frequency		Test Position	Figure No.	Ambient Temperature: 22.2 °C		Liquid Temperature: 21.7 °C				Power Drift (dB)
MHz	Ch.			Conducted Power (dBm)	Max. tune-up Power (dBm)	Measured SAR(10g) (W/kg)	Reported SAR(10g) (W/kg)	Measured SAR(1g) (W/kg)	Reported SAR(1g) (W/kg)	
5220	44	Front	/	11.76	12	0.001	0.00	0.006	0.01	0.10
5220	44	Rear	/	11.76	12	0.0000634	0.00	0.000613	0.00	0.11
5220	44	Left	/	11.76	12	0.013	0.01	0.035	0.04	-0.09
5220	44	Top	/	11.76	12	0.003	0.00	0.010	0.01	0.16
5280	56	Front	/	11.80	12	NA	NA	NA	NA	NA
5280	56	Rear	/	11.80	12	0.000511	0.00	0.003	0.00	-0.14
5280	56	Left	/	11.80	12	0.004	0.00	0.015	0.02	0.14
5280	56	Top	/	11.80	12	0.014	0.01	0.034	0.04	0.12
5560	112	Front	/	11.69	12	NA	NA	NA	NA	NA
5560	112	Rear	/	11.69	12	0.009	0.01	0.035	0.04	0.19
5560	112	Left	/	11.69	12	0.001	0.00	0.007	0.01	0.17
5560	112	Top	Fig.12	11.69	12	0.012	0.01	0.045	0.05	0.19
5805	161	Front	/	10.90	12	NA	NA	NA	NA	NA
5805	161	Rear	/	10.90	12	NA	NA	NA	NA	NA
5805	161	Left	/	10.90	12	0.000284	0.00	0.000598	0.00	0.16
5805	161	Top	/	10.90	12	0.002	0.00	0.012	0.02	0.14

Note1: The distance between the EUT and the phantom bottom is 10mm.

NA - The SAR values are too low for some positions so that the system can't show them by SEMCAD.

14.3 SAR results for Standard procedure

There is zoom scan measurement to be added for the highest measured SAR in each exposure configuration/band.

Table 14.14: SAR Values (GSM 850 MHz Band - Head)

Ambient Temperature: 22.4 °C						Liquid Temperature: 21.9 °C					
Frequency		Side	Test Position	Figure No.	Conducted Power (dBm)	Max. tune-up Power (dBm)	Measured SAR(10g) (W/kg)	Reported SAR(10g) (W/kg)	Measured SAR(1g) (W/kg)	Reported SAR(1g) (W/kg)	Power Drift (dB)
MHz	Ch.										
836.6	190	Right	Touch	Fig.1	32.3	33	0.242	0.28	0.316	0.37	0.01

Table 14.15: SAR Values (GSM 850 MHz Band - Body)

Ambient Temperature: 22.4 °C						Liquid Temperature: 21.9 °C					
Frequency		Mode (number of timeslots)	Test Position	Figure No.	Conducted Power (dBm)	Max. tune-up Power (dBm)	Measured SAR(10g) (W/kg)	Reported SAR(10g) (W/kg)	Measured SAR(1g) (W/kg)	Reported SAR(1g) (W/kg)	Power Drift (dB)
MHz	Ch.										
836.6	190	GPRS (3)	Rear	Fig.2	29.1	30.2	0.548	0.71	0.708	0.91	-0.06

Note1: The distance between the EUT and the phantom bottom is 10mm.

Table 14.16: SAR Values (GSM 1900 MHz Band - Head)

Ambient Temperature: 22.3 °C						Liquid Temperature: 21.8 °C					
Frequency		Side	Test Position	Figure No.	Conducted Power (dBm)	Max. tune-up Power (dBm)	Measured SAR(10g) (W/kg)	Reported SAR(10g) (W/kg)	Measured SAR(1g) (W/kg)	Reported SAR(1g) (W/kg)	Power Drift (dB)
MHz	Ch.										
1880	661	Left	Touch	Fig.3	28.8	30	0.087	0.11	0.147	0.19	0.09

Table 14.17: SAR Values (GSM 1900 MHz Band - Body)

Ambient Temperature: 22.3 °C						Liquid Temperature: 21.8 °C					
Frequency		Mode (number of timeslots)	Test Position	Figure No.	Conducted Power (dBm)	Max. tune-up Power (dBm)	Measured SAR(10g) (W/kg)	Reported SAR(10g) (W/kg)	Measured SAR(1g) (W/kg)	Reported SAR(1g) (W/kg)	Power Drift (dB)
MHz	Ch.										
1909.8	810	GPRS (3)	Bottom	Fig.4	25.3	26.2	0.383	0.47	0.742	0.91	-0.04

Note1: The distance between the EUT and the phantom bottom is 10mm.

Table 14.18: SAR Values (WCDMA 850 MHz Band - Head)

Ambient Temperature: 22.4 °C						Liquid Temperature: 21.9 °C					
Frequency		Side	Test Position	Figure No.	Conducted Power (dBm)	Max. tune-up Power (dBm)	Measured SAR(10g) (W/kg)	Reported SAR(10g) (W/kg)	Measured SAR(1g) (W/kg)	Reported SAR(1g) (W/kg)	Power Drift (dB)
MHz	Ch.										
846.6	4233	Right	Touch	Fig.5	21.62	23	0.181	0.25	0.240	0.33	0.12

Table 14.19: SAR Values (WCDMA 850 MHz Band - Body)

Ambient Temperature: 22.4 °C						Liquid Temperature: 21.9 °C					
Frequency		Test Position	Figure No.	Conducted Power (dBm)	Max. tune-up Power (dBm)	Measured SAR(10g) (W/kg)	Reported SAR(10g) (W/kg)	Measured SAR(1g) (W/kg)	Reported SAR(1g) (W/kg)	Power Drift (dB)	
MHz	Ch.										
846.6	4233	Rear	Fig.6	21.62	23	0.406	0.56	0.525	0.72	-0.01	

Note1: The distance between the EUT and the phantom bottom is 10mm.

Table 14.20: SAR Values (WCDMA 1900 MHz Band - Head)

Ambient Temperature: 22.3 °C						Liquid Temperature: 21.8 °C					
Frequency		Side	Test Position	Figure No.	Conducted Power (dBm)	Max. tune-up Power (dBm)	Measured SAR(10g) (W/kg)	Reported SAR(10g) (W/kg)	Measured SAR(1g) (W/kg)	Reported SAR(1g) (W/kg)	Power Drift (dB)
MHz	Ch.										
1880	9400	Left	Touch	Fig.7	23.24	23.5	0.223	0.24	0.370	0.39	0.17

Table 14.21: SAR Values (WCDMA 1900 MHz Band - Body)

Ambient Temperature: 22.3 °C						Liquid Temperature: 21.8 °C					
Frequency		Test Position	Figure No.	Conducted Power (dBm)	Max. tune-up Power (dBm)	Measured SAR(10g) (W/kg)	Reported SAR(10g) (W/kg)	Measured SAR(1g) (W/kg)	Reported SAR(1g) (W/kg)	Power Drift (dB)	
MHz	Ch.										
1907.6	9538	Bottom	Fig.8	23.05	23.5	0.535	0.59	1.04	1.15	0.09	

Note1: The distance between the EUT and the phantom bottom is 10mm.

Table 14.22: SAR Values (Wi-Fi 802.11b - Head)

Ambient Temperature: 22.2 °C						Liquid Temperature: 21.7 °C					
Frequency		Side	Test Position	Figure No.	Conducted Power (dBm)	Max. tune-up Power (dBm)	Measured SAR(10g) (W/kg)	Reported SAR(10g) (W/kg)	Measured SAR(1g) (W/kg)	Reported SAR(1g) (W/kg)	Power Drift (dB)
MHz	Ch.										
2462	11	Right	Touch	Fig.9	17.09	17.5	0.324	0.36	0.680	0.75	0.03

Table 14.23: SAR Values (Wi-Fi 802.11b - Body)

Ambient Temperature: 22.2 °C						Liquid Temperature: 21.7 °C					
Frequency		Test Position	Figure No.	Conducted Power (dBm)	Max. tune-up Power (dBm)	Measured SAR(10g) (W/kg)	Reported SAR(10g) (W/kg)	Measured SAR(1g) (W/kg)	Reported SAR(1g) (W/kg)	Power Drift (dB)	
MHz	Ch.										
2462	11	Rear	Fig.10	17.09	17.5	0.055	0.06	0.118	0.13	0.12	

Note1: The distance between the EUT and the phantom bottom is 10mm.

Table 14.24: SAR Values (Wi-Fi 802.11a - Head)

Ambient Temperature: 22.2 °C						Liquid Temperature: 21.7 °C					
Frequency		Side	Test Position	Figure No.	Conducted Power (dBm)	Max. tune-up Power (dBm)	Measured SAR(10g) (W/kg)	Reported SAR(10g) (W/kg)	Measured SAR(1g) (W/kg)	Reported SAR(1g) (W/kg)	Power Drift (dB)
MHz	Ch.										
5280	56	Right	Touch	Fig.11	11.80	12	0.048	0.05	0.212	0.22	-0.17

Table 14.25: SAR Values (Wi-Fi 802.11a - Body)

Ambient Temperature: 22.2 °C						Liquid Temperature: 21.7 °C					
Frequency		Test Position	Figure No.	Conducted Power (dBm)	Max. tune-up Power (dBm)	Measured SAR(10g) (W/kg)	Reported SAR(10g) (W/kg)	Measured SAR(1g) (W/kg)	Reported SAR(1g) (W/kg)	Power Drift (dB)	
MHz	Ch.										
5560	112	Top	Fig.12	11.69	12	0.012	0.01	0.045	0.05	0.19	

Note1: The distance between the EUT and the phantom bottom is 10mm.

15 SAR Measurement Variability

SAR measurement variability must be assessed for each frequency band, which is determined by the SAR probe calibration point and tissue-equivalent medium used for the device measurements. When both head and body tissue-equivalent media are required for SAR measurements in a frequency band, the variability measurement procedures should be applied to the tissue medium with the highest measured SAR, using the highest measured SAR configuration for that tissue-equivalent medium.

The following procedures are applied to determine if repeated measurements are required.

- 1) Repeated measurement is not required when the original highest measured SAR is < 0.80 W/kg; steps 2) through 4) do not apply.
- 2) When the original highest measured SAR is ≥ 0.80 W/kg, repeat that measurement once.
- 3) Perform a second repeated measurement only if the ratio of largest to smallest SAR for the original and first repeated measurements is > 1.20 or when the original or repeated measurement is ≥ 1.45 W/kg (~ 10% from the 1-g SAR limit).
- 4) Perform a third repeated measurement only if the original, first or second repeated measurement is ≥ 1.5 W/kg and the ratio of largest to smallest SAR for the original, first and second repeated measurements is > 1.20 .

Table 15.1: SAR Measurement Variability for Body WCDMA 1900 (1g)

Frequency		Test Position	Spacing (mm)	Original SAR (W/kg)	First Repeated SAR (W/kg)	The Ratio	Second Repeated SAR (W/kg)
MHz	Ch.						
1907.6	9538	Bottom	10	1.04	1.03	1.01	/

16 Measurement Uncertainty

16.1 Measurement Uncertainty for Normal SAR Tests (300MHz~3GHz)

No.	Error Description	Type	Uncertainty value	Probably Distribution	Div.	(Ci) 1g	(Ci) 10g	Std.Unc. (1g)	Std.Unc. (10g)	Degree of freedom
Measurement system										
1	Probe calibration	B	5.5	N	1	1	1	5.5	5.5	∞
2	Isotropy	B	4.7	R	$\sqrt{3}$	0.7	0.7	1.9	1.9	∞
3	Boundary effect	B	1.0	R	$\sqrt{3}$	1	1	0.6	0.6	∞
4	Linearity	B	4.7	R	$\sqrt{3}$	1	1	2.7	2.7	∞
5	Detection limit	B	1.0	R	$\sqrt{3}$	1	1	0.6	0.6	∞
6	Readout electronics	B	0.3	R	$\sqrt{3}$	1	1	0.3	0.3	∞
7	Response time	B	0.8	R	$\sqrt{3}$	1	1	0.5	0.5	∞
8	Integration time	B	2.6	R	$\sqrt{3}$	1	1	1.5	1.5	∞
9	RF ambient conditions-noise	B	0	R	$\sqrt{3}$	1	1	0	0	∞
10	RF ambient conditions-reflection	B	0	R	$\sqrt{3}$	1	1	0	0	∞
11	Probe positioned mech. restrictions	B	0.4	R	$\sqrt{3}$	1	1	0.2	0.2	∞
12	Probe positioning with respect to phantom shell	B	2.9	R	$\sqrt{3}$	1	1	1.7	1.7	∞
13	Post-processing	B	1.0	R	$\sqrt{3}$	1	1	0.6	0.6	∞
Test sample related										
14	Test sample positioning	A	3.3	N	1	1	1	3.3	3.3	71
15	Device holder uncertainty	A	3.4	N	1	1	1	3.4	3.4	5
16	Power scaling	B	2.2	R	$\sqrt{3}$	1	1	2.2	2.2	∞
17	Drift of output power	B	5.0	R	$\sqrt{3}$	1	1	2.9	2.9	∞
Phantom and set-up										
18	Phantom uncertainty	B	4.0	R	$\sqrt{3}$	1	1	2.3	2.3	∞
19	Algorithm for correcting SAR for deviations in permittivity and conductivity	B	1.9	N	1	1	0.84	1.9	1.6	∞
20	Liquid conductivity (target)	B	5.0	R	$\sqrt{3}$	0.64	0.43	1.8	1.2	∞
21	Liquid conductivity (meas.)	A	2.06	N	1	0.64	0.43	1.32	0.89	43
22	Liquid permittivity (target)	B	5.0	R	$\sqrt{3}$	0.6	0.49	1.7	1.4	∞
23	Liquid permittivity (meas.)	A	1.6	N	1	0.6	0.49	1.0	0.8	521
Combined standard uncertainty			$u_c = \sqrt{\sum_{i=1}^{23} c_i^2 u_i^2}$					9.69	9.47	257
Expanded uncertainty (confidence interval of 95 %)			$u_e = 2u_c$					19.4	18.9	

16.2 Measurement Uncertainty for Normal SAR Tests (3~6GHz)

No.	Error Description	Type	Uncertainty value	Probably Distribution	Div.	(Ci) 1g	(Ci) 10g	Std.Unc. (1g)	Std.Unc. (10g)	Degree of freedom
Measurement system										
1	Probe calibration	B	6.5	N	1	1	1	6.5	6.5	∞
2	Isotropy	B	4.7	R	$\sqrt{3}$	0.7	0.7	1.9	1.9	∞
3	Boundary effect	B	2.0	R	$\sqrt{3}$	1	1	1.2	1.2	∞
4	Linearity	B	4.7	R	$\sqrt{3}$	1	1	2.7	2.7	∞
5	Detection limit	B	1.0	R	$\sqrt{3}$	1	1	0.6	0.6	∞
6	Readout electronics	B	0.3	R	$\sqrt{3}$	1	1	0.3	0.3	∞
7	Response time	B	0.8	R	$\sqrt{3}$	1	1	0.5	0.5	∞
8	Integration time	B	2.6	R	$\sqrt{3}$	1	1	1.5	1.5	∞
9	RF ambient conditions-noise	B	0	R	$\sqrt{3}$	1	1	0	0	∞
10	RF ambient conditions-reflection	B	0	R	$\sqrt{3}$	1	1	0	0	∞
11	Probe positioned mech. restrictions	B	0.8	R	$\sqrt{3}$	1	1	0.5	0.5	∞
12	Probe positioning with respect to phantom shell	B	6.7	R	$\sqrt{3}$	1	1	3.9	3.9	∞
13	Post-processing	B	4.0	R	$\sqrt{3}$	1	1	2.3	2.3	∞
Test sample related										
14	Test sample positioning	A	3.3	N	1	1	1	3.3	3.3	71
15	Device holder uncertainty	A	3.4	N	1	1	1	3.4	3.4	5
16	Power scaling	B	2.2	R	$\sqrt{3}$	1	1	2.2	2.2	∞
17	Drift of output power	B	5.0	R	$\sqrt{3}$	1	1	2.9	2.9	∞
Phantom and set-up										
18	Phantom uncertainty	B	4.0	R	$\sqrt{3}$	1	1	2.3	2.3	∞
19	Algorithm for correcting SAR for deviations in permittivity and conductivity	B	1.9	N	1	1	0.84	1.9	1.6	∞
20	Liquid conductivity (target)	B	5.0	R	$\sqrt{3}$	0.64	0.43	1.8	1.2	∞
21	Liquid conductivity (meas.)	A	2.06	N	1	0.64	0.43	1.32	0.89	43
22	Liquid permittivity (target)	B	5.0	R	$\sqrt{3}$	0.6	0.49	1.7	1.4	∞
23	Liquid permittivity (meas.)	A	1.6	N	1	0.6	0.49	1.0	0.8	521
Combined standard uncertainty		$u_c = \sqrt{\sum_{i=1}^{23} c_i^2 u_i^2}$						11.2	11.0	257
Expanded uncertainty (confidence interval of 95 %)		$u_e = 2u_c$						22.3	21.9	

16.3 Measurement Uncertainty for Fast SAR Tests (300MHz~3GHz)

No.	Error Description	Type	Uncertainty value	Probably Distribution	Div.	(Ci) 1g	(Ci) 10g	Std.Unc. (1g)	Std.Unc. (10g)	Degree of freedom
Measurement system										
1	Probe calibration	B	5.5	N	1	1	1	5.5	5.5	∞
2	Isotropy	B	4.7	R	$\sqrt{3}$	0.7	0.7	1.9	1.9	∞
3	Boundary effect	B	1.0	R	$\sqrt{3}$	1	1	0.6	0.6	∞
4	Linearity	B	4.7	R	$\sqrt{3}$	1	1	2.7	2.7	∞
5	Detection limit	B	1.0	R	$\sqrt{3}$	1	1	0.6	0.6	∞
6	Readout electronics	B	0.3	R	$\sqrt{3}$	1	1	0.3	0.3	∞
7	Response time	B	0.8	R	$\sqrt{3}$	1	1	0.5	0.5	∞
8	Integration time	B	2.6	R	$\sqrt{3}$	1	1	1.5	1.5	∞
9	RF ambient conditions-noise	B	0	R	$\sqrt{3}$	1	1	0	0	∞
10	RF ambient conditions-reflection	B	0	R	$\sqrt{3}$	1	1	0	0	∞
11	Probe positioned mech. Restrictions	B	0.4	R	$\sqrt{3}$	1	1	0.2	0.2	∞
12	Probe positioning with respect to phantom shell	B	2.9	R	$\sqrt{3}$	1	1	1.7	1.7	∞
13	Post-processing	B	1.0	R	$\sqrt{3}$	1	1	0.6	0.6	∞
14	Fast SAR z-Approximation	B	7.0	R	$\sqrt{3}$	1	1	4.0	4.0	∞
Test sample related										
15	Test sample positioning	A	3.3	N	1	1	1	3.3	3.3	71
16	Device holder uncertainty	A	3.4	N	1	1	1	3.4	3.4	5
17	Power scaling	B	2.2	R	$\sqrt{3}$	1	1	2.2	2.2	∞
18	Drift of output power	B	5.0	R	$\sqrt{3}$	1	1	2.9	2.9	∞
Phantom and set-up										
19	Phantom uncertainty	B	4.0	R	$\sqrt{3}$	1	1	2.3	2.3	∞
20	Algorithm for correcting SAR for deviations in permittivity and conductivity	B	1.9	N	1	1	0.84	1.9	1.6	∞
21	Liquid conductivity (target)	B	5.0	R	$\sqrt{3}$	0.64	0.43	1.8	1.2	∞
22	Liquid conductivity (meas.)	A	2.06	N	1	0.64	0.43	1.32	0.89	43
23	Liquid permittivity (target)	B	5.0	R	$\sqrt{3}$	0.6	0.49	1.7	1.4	∞
24	Liquid permittivity (meas.)	A	1.6	N	1	0.6	0.49	1.0	0.8	521
Combined standard uncertainty		$u_c = \sqrt{\sum_{i=1}^{24} c_i^2 u_i^2}$						10.5	10.3	257
Expanded uncertainty (confidence interval of 95 %)		$u_e = 2u_c$						21.0	20.6	

16.4 Measurement Uncertainty for Fast SAR Tests (3~6GHz)

No.	Error Description	Type	Uncertainty value	Probably Distribution	Div.	(Ci) 1g	(Ci) 10g	Std.Unc. (1g)	Std.Unc. (10g)	Degree of freedom
Measurement system										
1	Probe calibration	B	6.5	N	1	1	1	6.5	6.5	∞
2	Isotropy	B	4.7	R	$\sqrt{3}$	0.7	0.7	1.9	1.9	∞
3	Boundary effect	B	2.0	R	$\sqrt{3}$	1	1	1.2	1.2	∞
4	Linearity	B	4.7	R	$\sqrt{3}$	1	1	2.7	2.7	∞
5	Detection limit	B	1.0	R	$\sqrt{3}$	1	1	0.6	0.6	∞
6	Readout electronics	B	0.3	R	$\sqrt{3}$	1	1	0.3	0.3	∞
7	Response time	B	0.8	R	$\sqrt{3}$	1	1	0.5	0.5	∞
8	Integration time	B	2.6	R	$\sqrt{3}$	1	1	1.5	1.5	∞
9	RF ambient conditions-noise	B	0	R	$\sqrt{3}$	1	1	0	0	∞
10	RF ambient conditions-reflection	B	0	R	$\sqrt{3}$	1	1	0	0	∞
11	Probe positioned mech. Restrictions	B	0.8	R	$\sqrt{3}$	1	1	0.5	0.5	∞
12	Probe positioning with respect to phantom shell	B	6.7	R	$\sqrt{3}$	1	1	3.9	3.9	∞
13	Post-processing	B	1.0	R	$\sqrt{3}$	1	1	0.6	0.6	∞
14	Fast SAR z-Approximation	B	14.0	R	$\sqrt{3}$	1	1	8.1	8.1	∞
Test sample related										
15	Test sample positioning	A	3.3	N	1	1	1	3.3	3.3	71
16	Device holder uncertainty	A	3.4	N	1	1	1	3.4	3.4	5
17	Power scaling	B	2.2	R	$\sqrt{3}$	1	1	2.2	2.2	∞
18	Drift of output power	B	5.0	R	$\sqrt{3}$	1	1	2.9	2.9	∞
Phantom and set-up										
19	Phantom uncertainty	B	4.0	R	$\sqrt{3}$	1	1	2.3	2.3	∞
20	Algorithm for correcting SAR for deviations in permittivity and conductivity	B	1.9	N	1	1	0.84	1.9	1.6	∞
21	Liquid conductivity (target)	B	5.0	R	$\sqrt{3}$	0.64	0.43	1.8	1.2	∞
22	Liquid conductivity (meas.)	A	2.06	N	1	0.64	0.43	1.32	0.89	43
23	Liquid permittivity (target)	B	5.0	R	$\sqrt{3}$	0.6	0.49	1.7	1.4	∞
24	Liquid permittivity (meas.)	A	1.6	N	1	0.6	0.49	1.0	0.8	521
Combined standard uncertainty		$u_c = \sqrt{\sum_{i=1}^{22} c_i^2 u_i^2}$						13.6	13.5	257
Expanded uncertainty (confidence interval of 95 %)		$u_e = 2u_c$						27.2	26.9	

17 MAIN TEST INSTRUMENTS

Table 17.1: List of Main Instruments

No.	Name	Type	Serial Number	Calibration Date	Valid Period
01	Network analyzer	E5071C	MY46110673	February 15, 2014	One year
02	Power meter	NRVD	102083	September 11, 2013	One year
03	Power sensor	NRV-Z5	100542		
04	Signal Generator	E4438C	MY49070393	November 08, 2013	One Year
05	Amplifier	60S1G4	0331848	No Calibration Requested	
06	BTS	E5515C	MY50263375	January 30, 2014	One year
07	E-field Probe	SPEAG EX3DV4	3846	September 03, 2013	One year
08	DAE	SPEAG DAE4	771	November 12, 2013	One year
09	Dipole Validation Kit	SPEAG D835V2	443	August 29, 2013	One year
10	Dipole Validation Kit	SPEAG D1900V2	5d101	July 09, 2013	One year
11	Dipole Validation Kit	SPEAG D2450V2	853	July 08, 2013	One year
12	Dipole Validation Kit	SPEAG D5GHzV2	1060	July 03, 2013	One year

END OF REPORT BODY

ANNEX A Graph Results

850 Right Cheek Middle

Date: 2014-05-12

Electronics: DAE4 Sn771

Medium: Head 850 MHz

Medium parameters used: $f = 836.6$ MHz; $\sigma = 0.895$ S/m; $\epsilon_r = 40.237$; $\rho = 1000$ kg/m³

Ambient Temperature: 22.4°C Liquid Temperature: 21.9°C

Communication System: GSM 850 Frequency: 836.6 MHz Duty Cycle: 1:8.3

Probe: EX3DV4 - SN3846 ConvF(8.92, 8.92, 8.92)

Cheek Middle/Area Scan (61x111x1): Interpolated grid: dx=1.000 mm, dy=1.000 mm
Maximum value of SAR (interpolated) = 0.335 W/kg

Cheek Middle/Zoom Scan (7x7x7)/Cube 0: Measurement grid: dx=5mm, dy=5mm, dz=5mm

Reference Value = 5.863 V/m; Power Drift = 0.01 dB

Peak SAR (extrapolated) = 0.395 W/kg

SAR(1 g) = 0.316 W/kg; SAR(10 g) = 0.242 W/kg

Maximum value of SAR (measured) = 0.329 W/kg

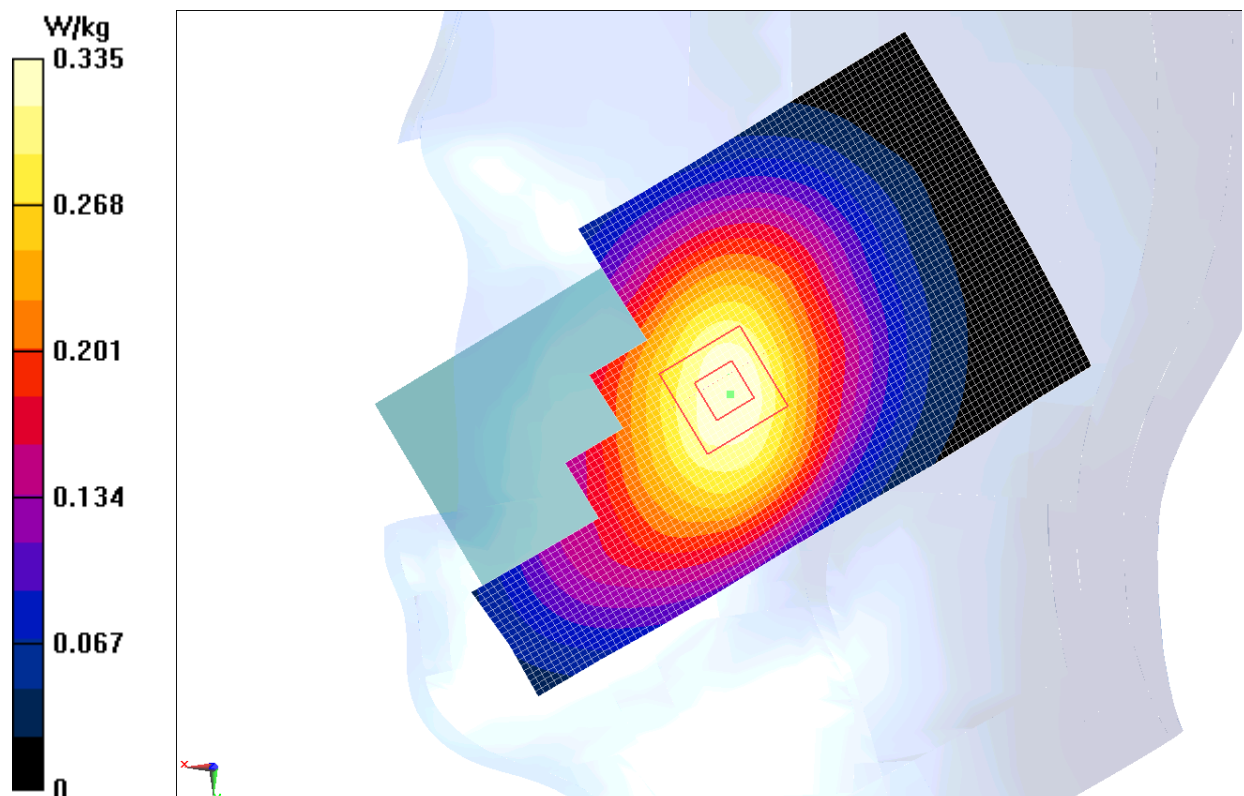


Fig.1 850MHz CH190

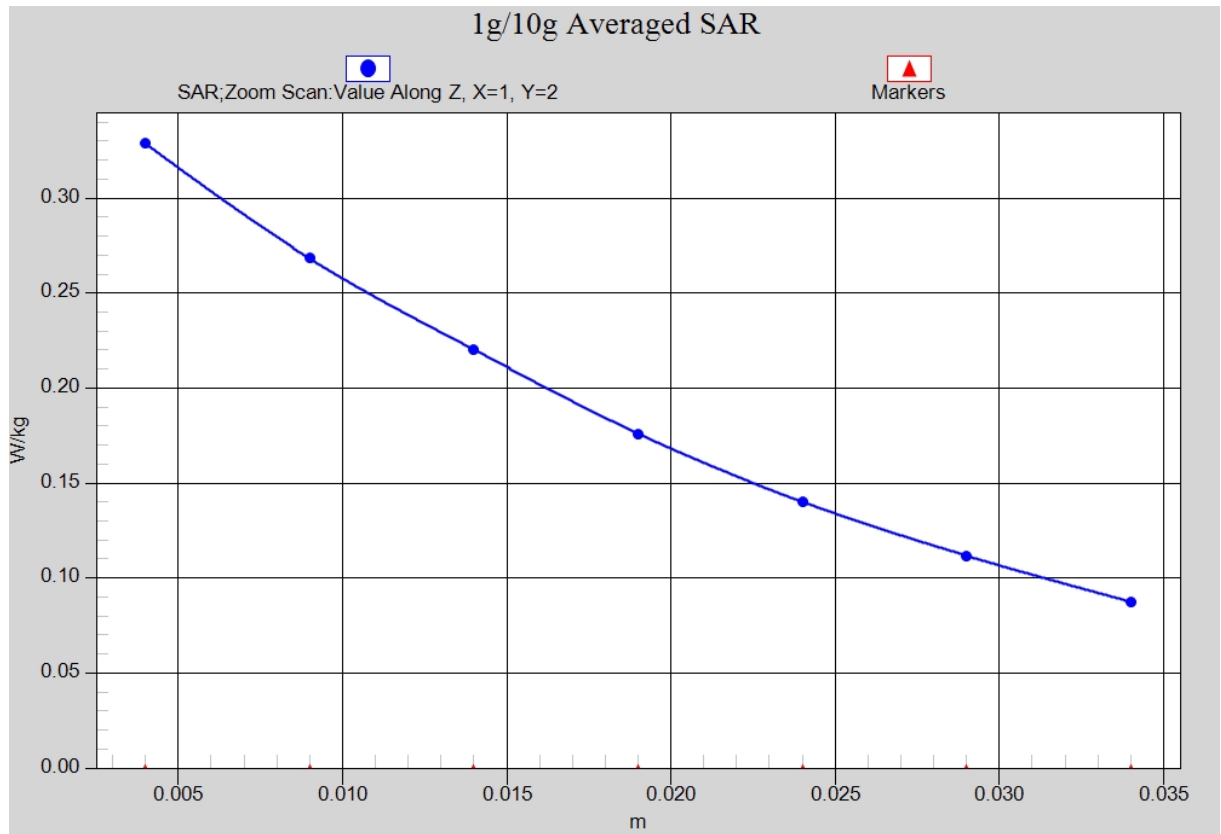


Fig. 1-1 Z-Scan at power reference point (850 MHz CH190)

850 Body Rear Middle

Date: 2014-05-12

Electronics: DAE4 Sn771

Medium: Body 850 MHz

Medium parameters used: $f = 836.6$ MHz; $\sigma = 0.985$ S/m; $\epsilon_r = 54.85$; $\rho = 1000$ kg/m³

Ambient Temperature: 22.4°C Liquid Temperature: 21.9°C

Communication System: GSM 850 GPRS Frequency: 836.6 MHz Duty Cycle: 1:2.67

Probe: EX3DV4 - SN3846 ConvF(8.73, 8.73, 8.73)

Rear Middle /Area Scan (51x101x1): Interpolated grid: dx=1.000 mm, dy=1.000 mm

Maximum value of SAR (interpolated) = 0.766 W/kg

Rear Middle/Zoom Scan (7x7x7) /Cube 0: Measurement grid: dx=5mm, dy=5mm, dz=5mm

Reference Value = 27.347 V/m; Power Drift = -0.06 dB

Peak SAR (extrapolated) = 0.865 W/kg

SAR(1 g) = 0.708 W/kg; SAR(10 g) = 0.548 W/kg

Maximum value of SAR (measured) = 0.741 W/kg

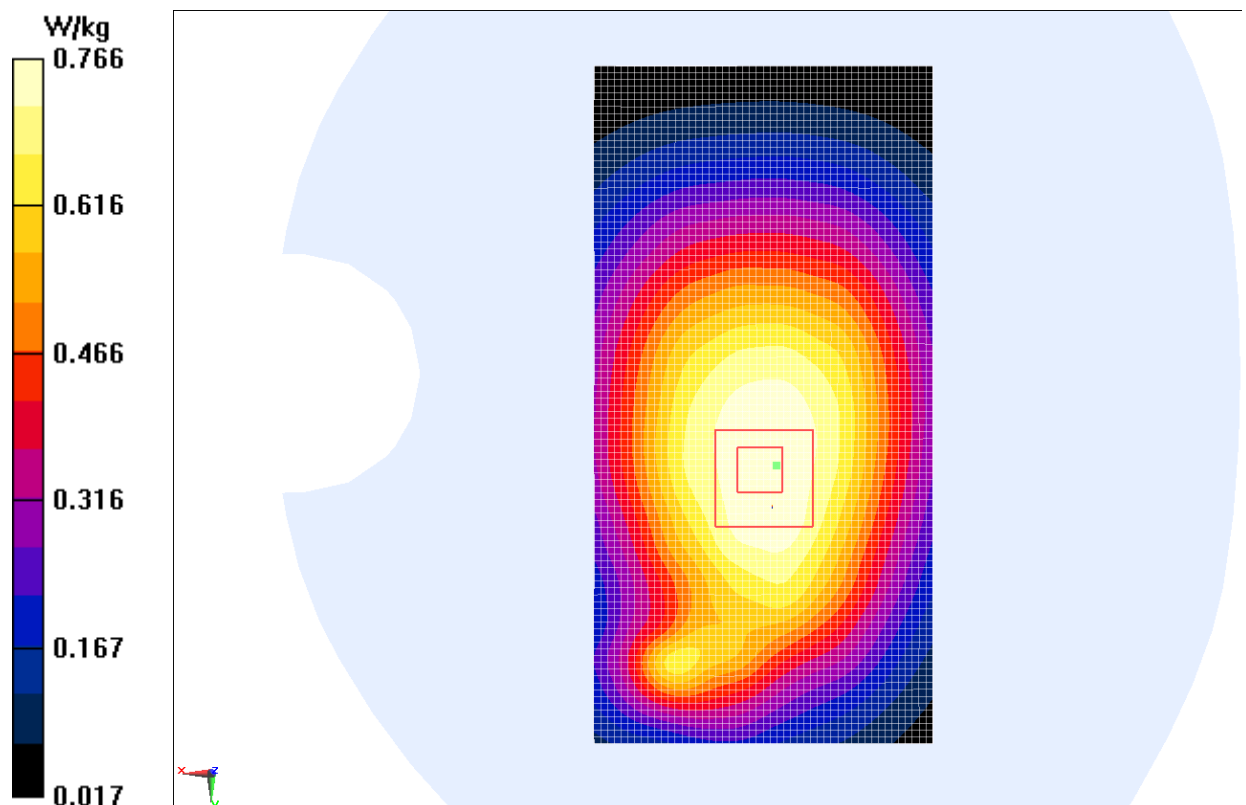


Fig.2 850 MHz CH190

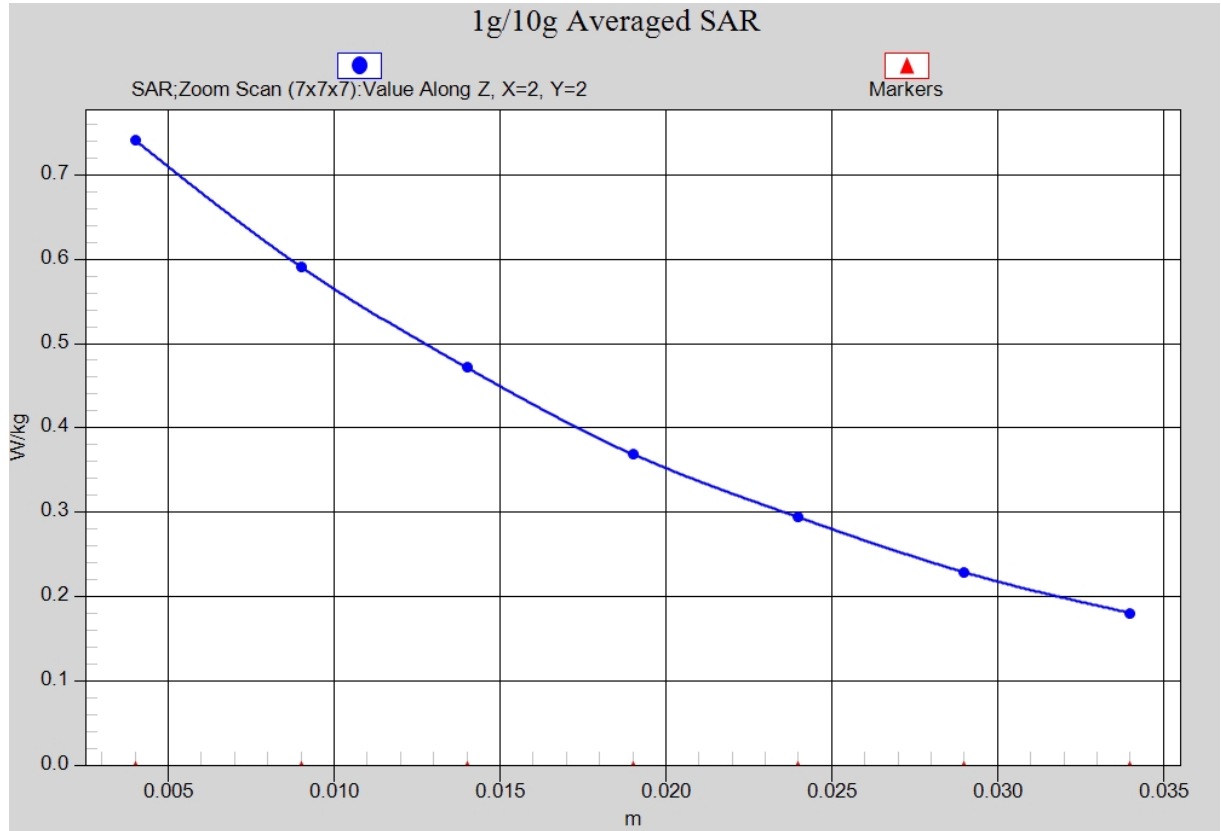


Fig. 2-1 Z-Scan at power reference point (850 MHz CH190)

1900 Left Cheek Middle

Date: 2014-05-13

Electronics: DAE4 Sn771

Medium: Head 1900 MHz

Medium parameters used: $f = 1880$ MHz; $\sigma = 1.395$ S/m; $\epsilon_r = 39.764$; $\rho = 1000$ kg/m³

Ambient Temperature: 22.3°C Liquid Temperature: 21.8°C

Communication System: GSM 1900MHz Frequency: 1880MHz Duty Cycle: 1:8.3

Probe: EX3DV4 - SN3846 ConvF(7.57, 7.57, 7.57)

Cheek Middle/Area Scan (51x101x1): Interpolated grid: dx=1.000 mm, dy=1.000 mm

Maximum value of SAR (interpolated) = 0.145 W/kg

Cheek Middle/Zoom Scan (7x7x7) /Cube 0: Measurement grid: dx=5mm, dy=5mm, dz=5mm

Reference Value = 4.431 V/m; Power Drift = 0.09 dB

Peak SAR (extrapolated) = 0.227 W/kg

SAR(1 g) = 0.147 W/kg; SAR(10 g) = 0.087 W/kg

Maximum value of SAR (measured) = 0.159 W/kg

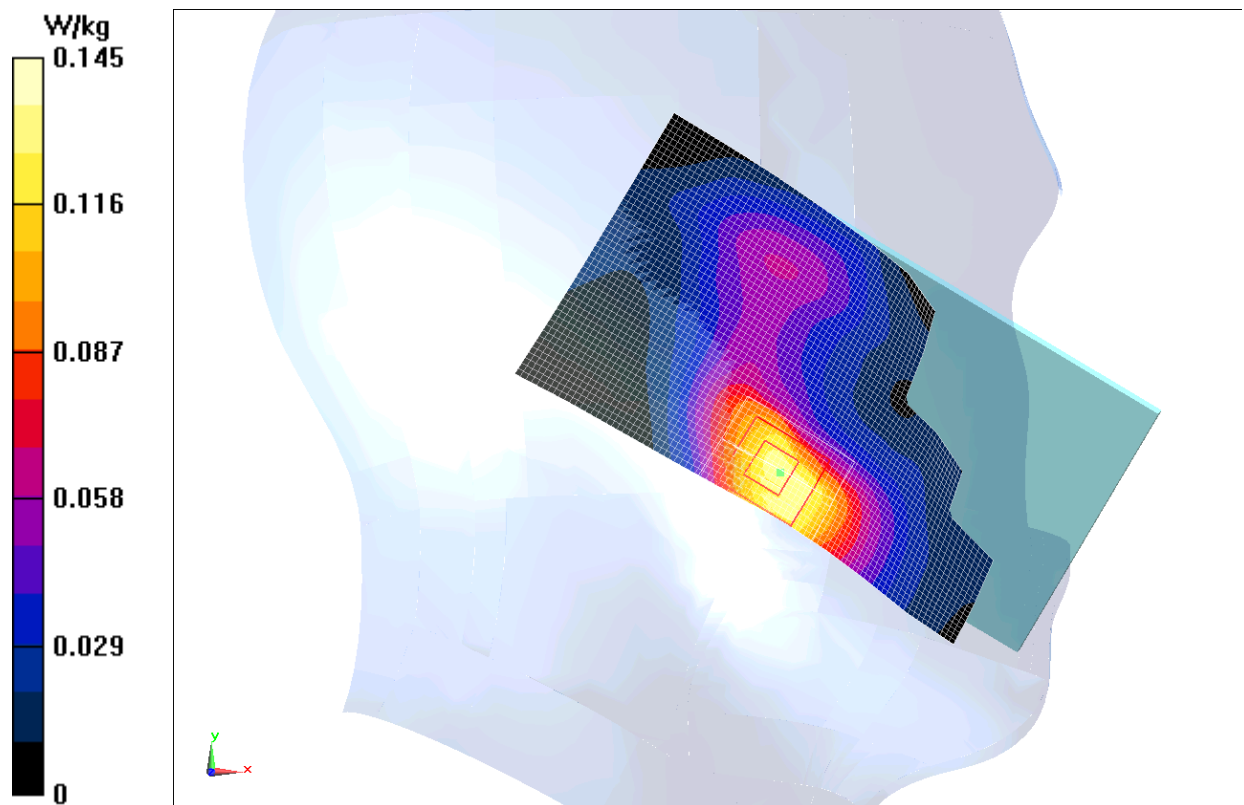


Fig.3 1900 MHz CH661

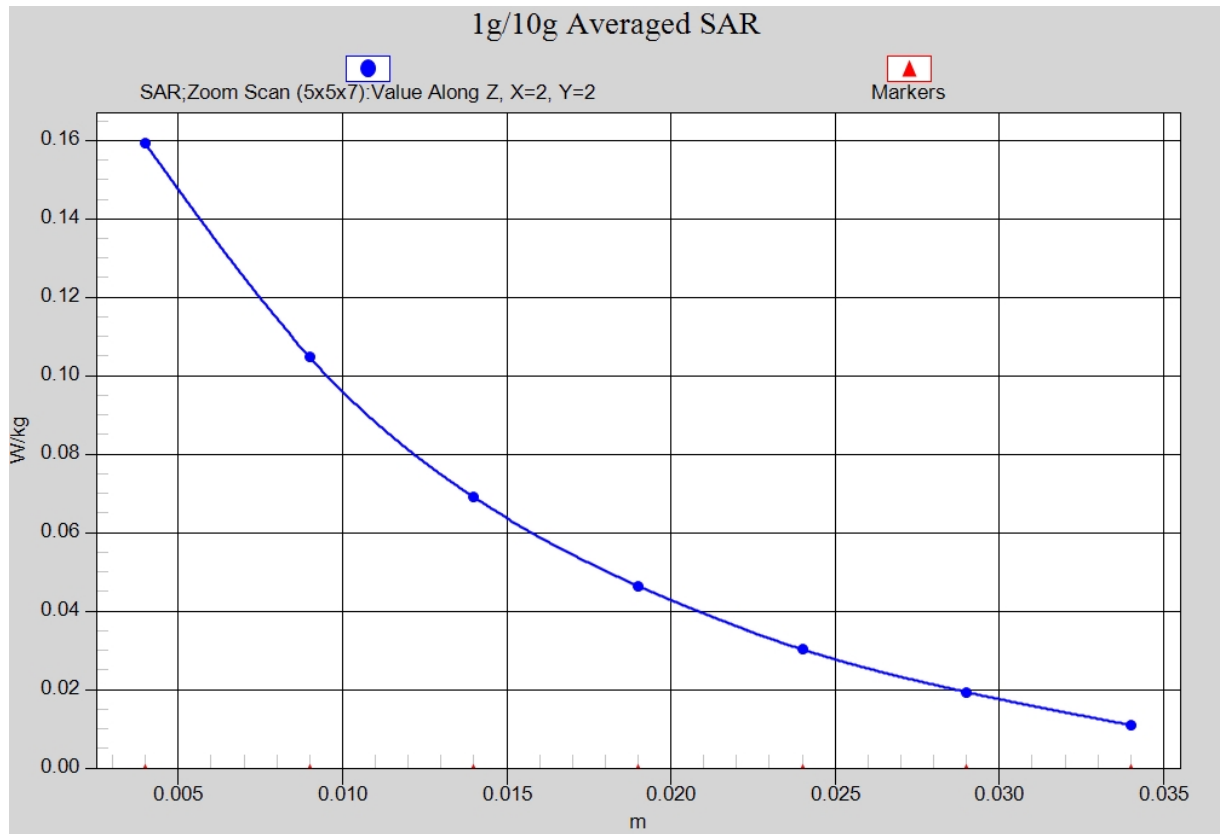


Fig. 3-1 Z-Scan at power reference point (1900 MHz CH661)

1900 Body Bottom Side High

Date: 2014-05-13

Electronics: DAE4 Sn771

Medium: Body 1900 MHz

Medium parameters used: $f = 1910$ MHz; $\sigma = 1.516$ S/m; $\epsilon_r = 52.802$; $\rho = 1000$ kg/m³

Ambient Temperature: 22.3°C Liquid Temperature: 21.8°C

Communication System: GSM 1900MHz GPRS Frequency: 1909.8 MHz Duty Cycle: 1:2.67

Probe: EX3DV4 - SN3846 ConvF(7.03, 7.03, 7.03)

Bottom Side High/Area Scan (51x101x1): Interpolated grid: dx=1.000 mm, dy=1.000 mm

Maximum value of SAR (interpolated) = 0.852 W/kg

Bottom Side High/Zoom Scan (7x7x7) /Cube 0: Measurement grid: dx=5mm, dy=5mm, dz=5mm

Reference Value = 15.920 V/m; Power Drift = -0.04 dB

Peak SAR (extrapolated) = 1.30 W/kg

SAR(1 g) = 0.742 W/kg; SAR(10 g) = 0.383 W/kg

Maximum value of SAR (measured) = 0.816 W/kg

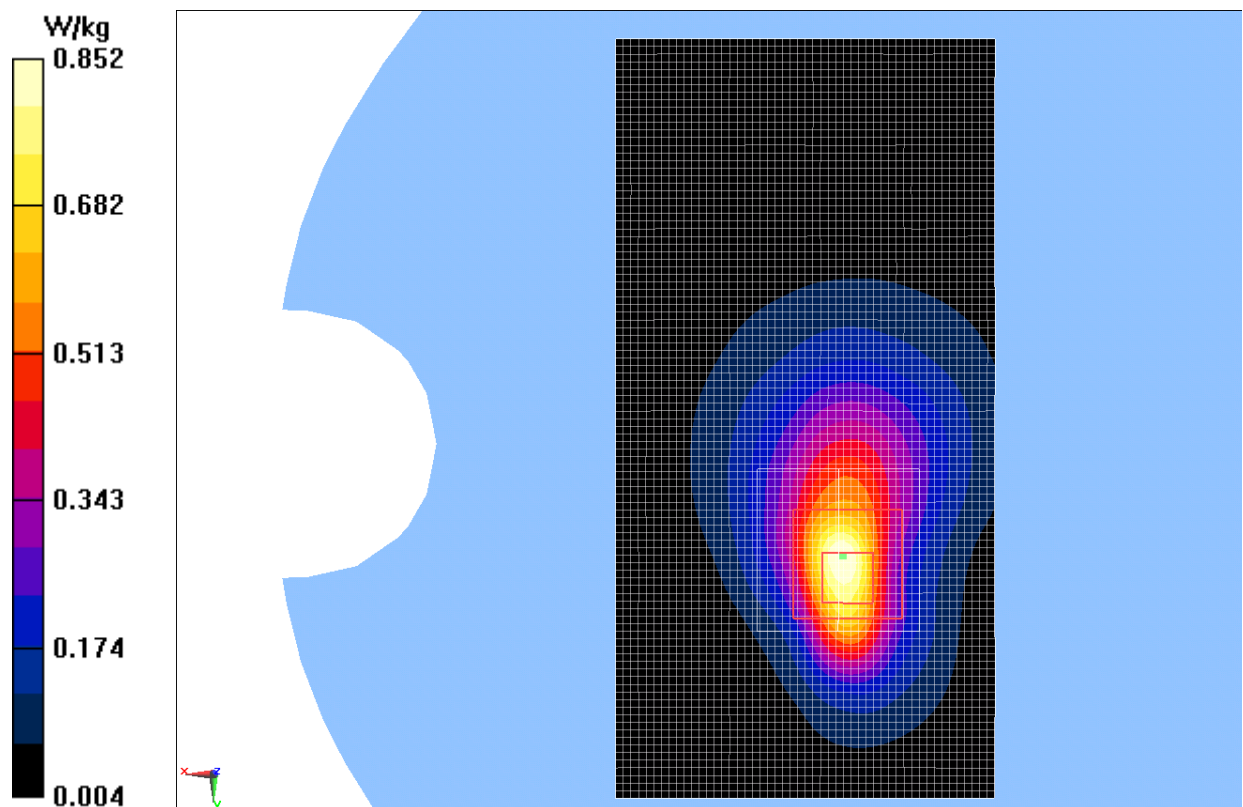


Fig.4 1900 MHz CH810

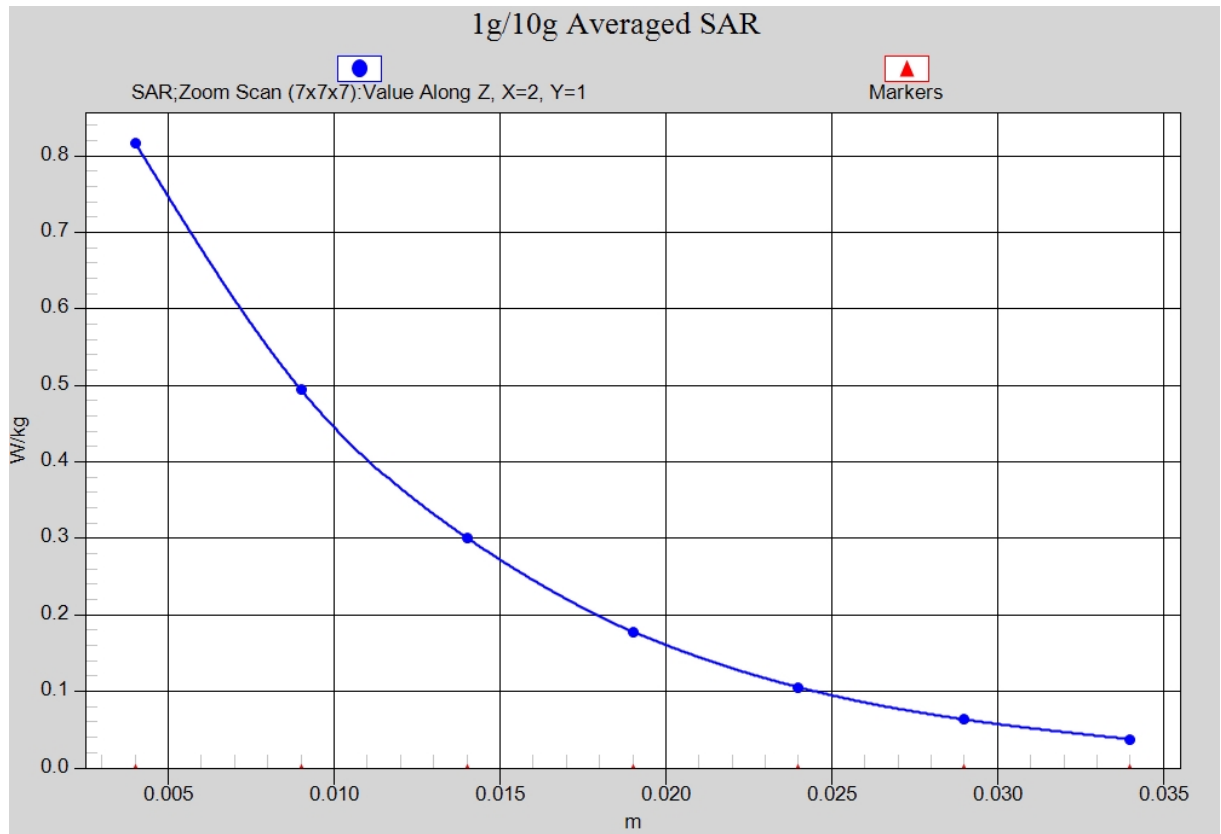


Fig.4-1 Z-Scan at power reference point (1900 MHz CH810)

WCDMA 850 Right Cheek High

Date: 2014-05-12

Electronics: DAE4 Sn771

Medium: Head 850 MHz

Medium parameters used: $f = 846.6$ MHz; $\sigma = 0.905$ S/m; $\epsilon_r = 41.008$; $\rho = 1000$ kg/m³

Ambient Temperature: 22.4°C Liquid Temperature: 21.9°C

Communication System: WCDMA; Frequency: 846.6 MHz; Duty Cycle: 1:1

Probe: EX3DV4 - SN3846 ConvF(8.92, 8.92, 8.92)

Right High/Area Scan (51x101x1): Interpolated grid: dx=1.000 mm, dy=1.000 mm

Maximum value of SAR (interpolated) = 0.249 W/kg

Right High/Zoom Scan (7x7x7)/Cube 0: Measurement grid: dx=5mm, dy=5mm, dz=5mm

Reference Value = 4.990 V/m; Power Drift = 0.12 dB

Peak SAR (extrapolated) = 0.295 W/kg

SAR(1 g) = 0.240 W/kg; SAR(10 g) = 0.181 W/kg

Maximum value of SAR (measured) = 0.251 W/kg

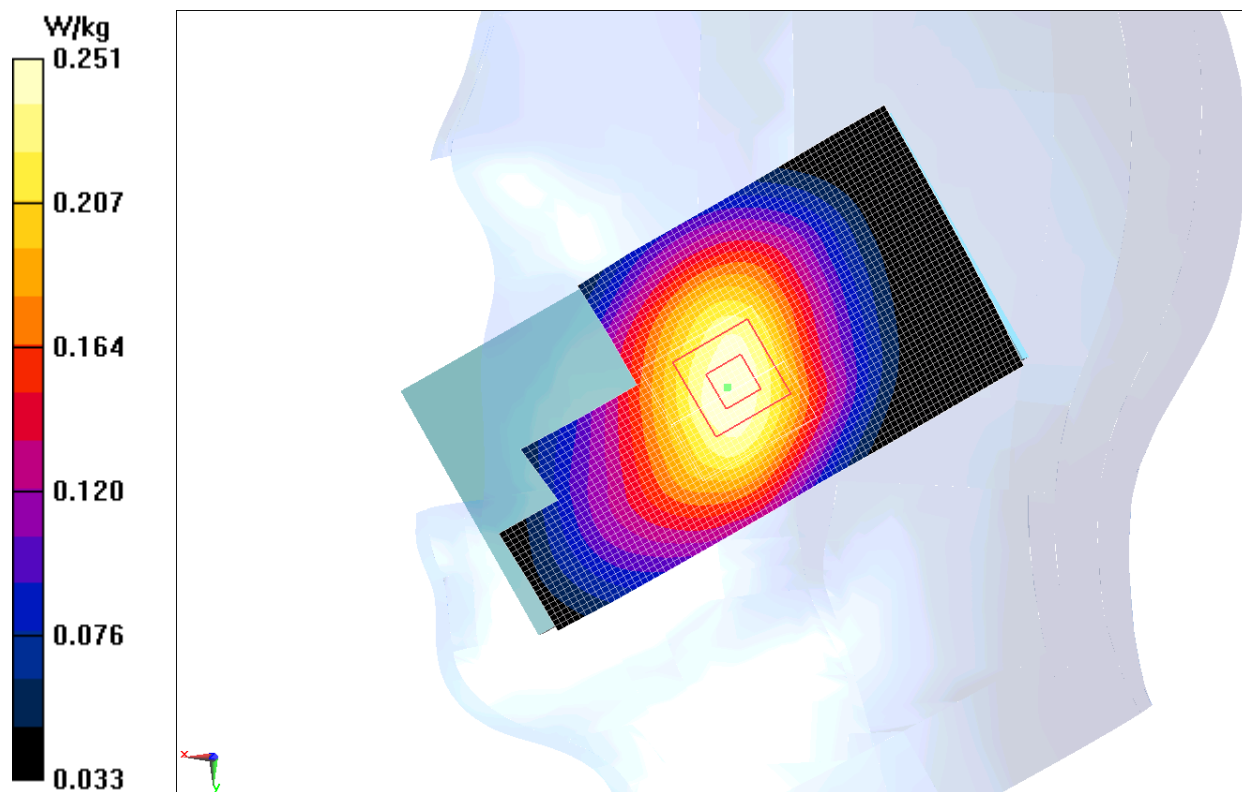


Fig.5 WCDMA 850 CH4233

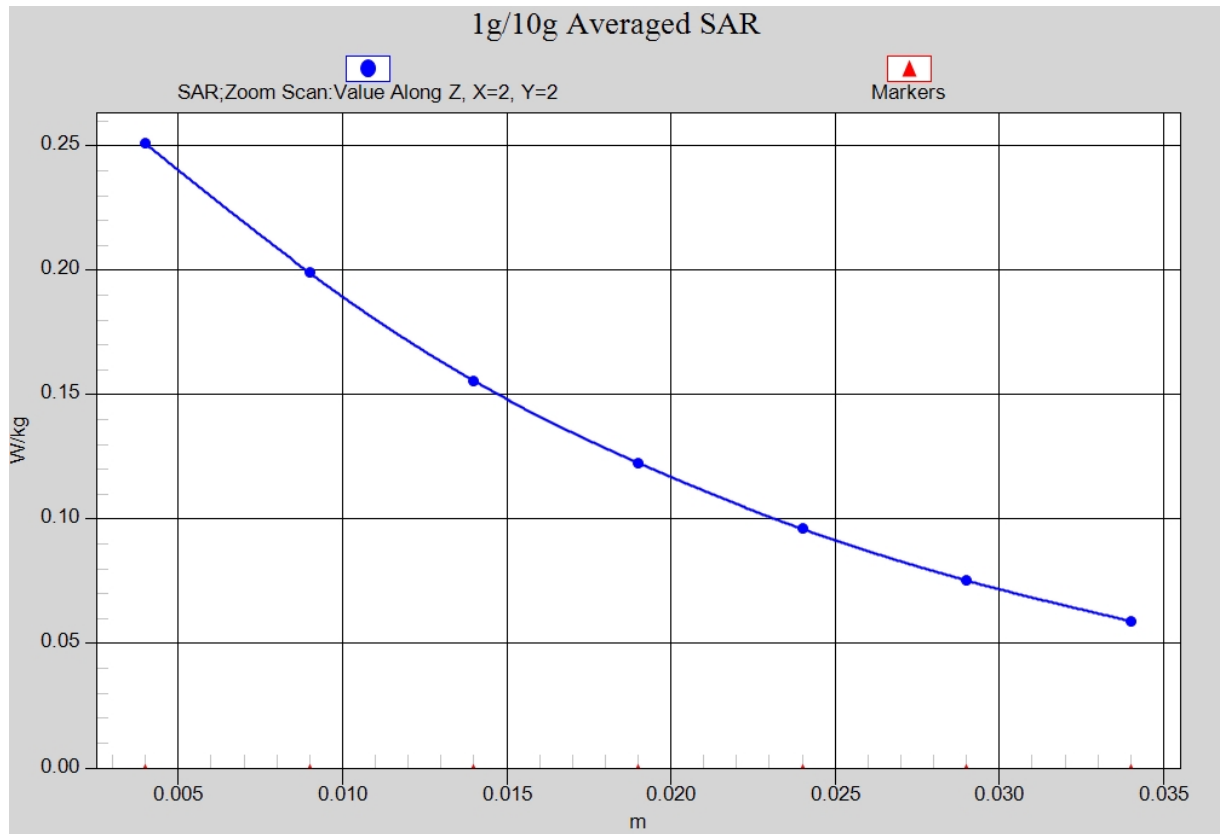


Fig. 5-1 Z-Scan at power reference point (WCDMA 850 CH4233)

WCDMA 850 Body Rear High

Date: 2014-05-12

Electronics: DAE4 Sn771

Medium: Body 850 MHz

Medium parameters used: $f = 846.6$ MHz; $\sigma = 0.996$ S/m; $\epsilon_r = 54.748$; $\rho = 1000$ kg/m³

Ambient Temperature: 22.4°C Liquid Temperature: 21.9°C

Communication System: WCDMA; Frequency: 846.6 MHz; Duty Cycle: 1:1

Probe: EX3DV4 - SN3846 ConvF(8.73, 8.73, 8.73)

Rear High/Area Scan (51x101x1): Interpolated grid: dx=1.000 mm, dy=1.000 mm

Maximum value of SAR (interpolated) = 0.540 W/kg

Rear High/Zoom Scan (7x7x7) /Cube 0: Measurement grid: dx=5mm, dy=5mm, dz=5mm

Reference Value = 22.694 V/m; Power Drift = -0.01 dB

Peak SAR (extrapolated) = 0.640 W/kg

SAR(1 g) = 0.525 W/kg; SAR(10 g) = 0.406 W/kg

Maximum value of SAR (measured) = 0.544 W/kg

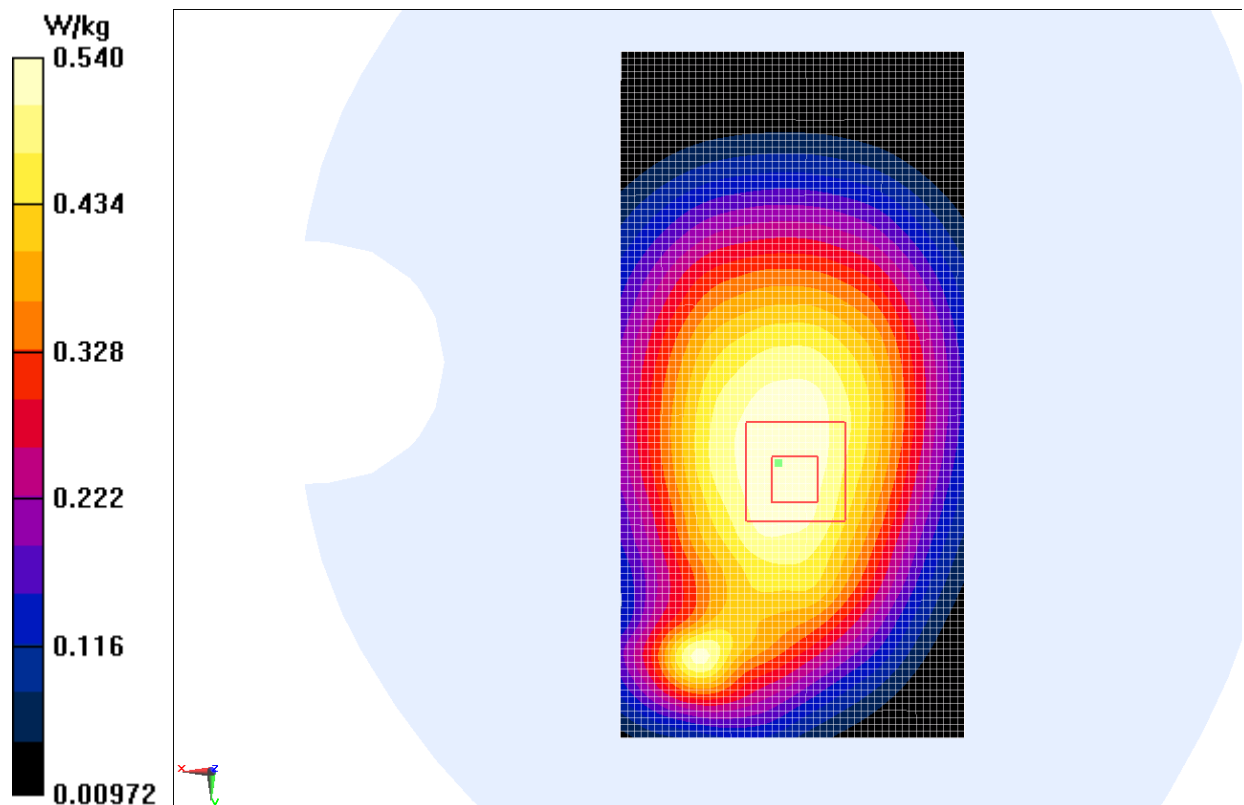


Fig.6 WCDMA 850 CH4233