

### 1900 Body Rear Middle

Date: 2014-1-2

Electronics: DAE4 Sn771

Medium: Body 1900 MHz

Medium parameters used:  $f = 1880$  MHz;  $\sigma = 1.487$  mho/m;  $\epsilon_r = 51.57$ ;  $\rho = 1000$  kg/m<sup>3</sup>

Ambient Temperature: 22.3°C      Liquid Temperature: 21.8°C

Communication System: GSM 1900MHz Frequency: 1880 MHz Duty Cycle: 1:8.3

Probe: EX3DV4 - SN3846 ConvF(7.03, 7.03, 7.03)

**Rear Middle/Area Scan (51x91x1):** Interpolated grid: dx=1.000 mm, dy=1.000 mm

Maximum value of SAR (interpolated) = 0.697 W/kg

**Rear Middle/Zoom Scan (7x7x7)/Cube 0:** Measurement grid: dx=5mm, dy=5mm, dz=5mm

Reference Value = 13.293 V/m; Power Drift = -0.13 dB

Peak SAR (extrapolated) = 1.07 W/kg

**SAR(1 g) = 0.640 W/kg; SAR(10 g) = 0.366 W/kg**

Maximum value of SAR (measured) = 0.692 W/kg

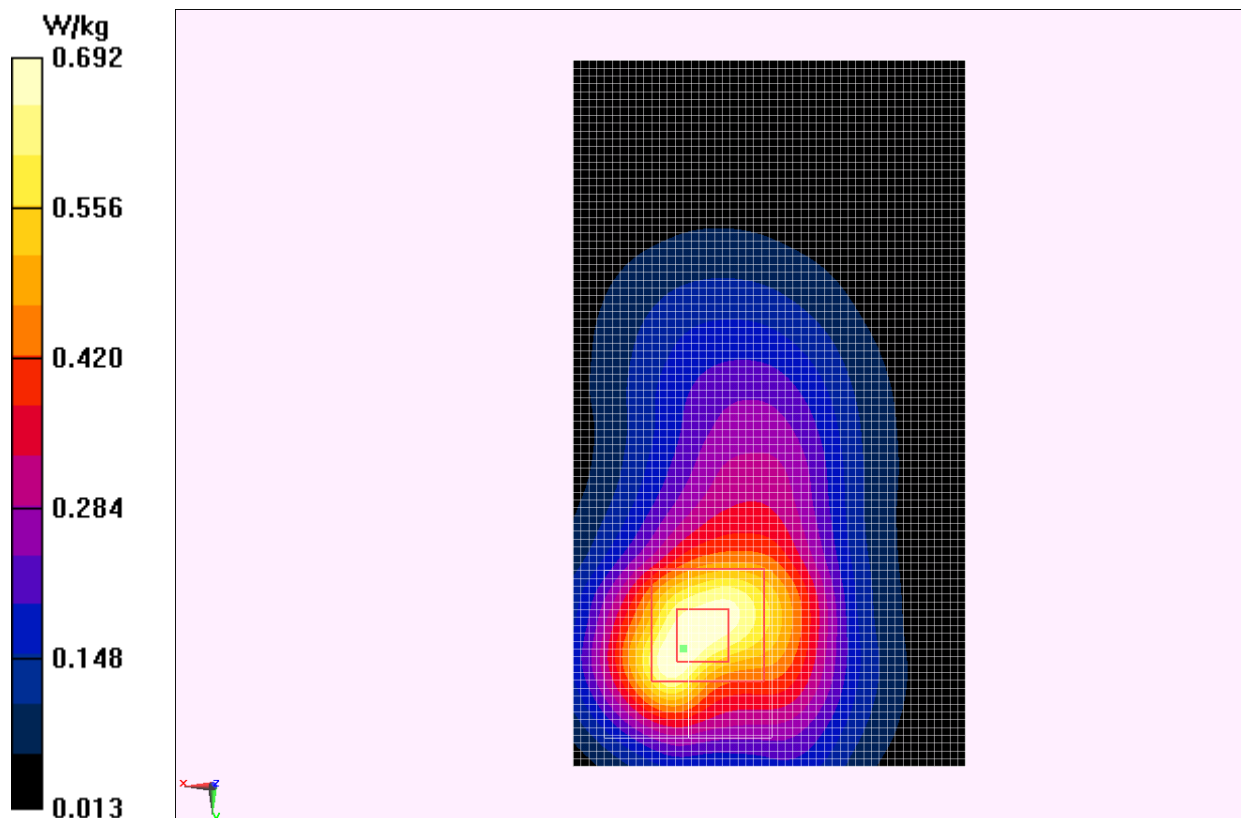


Fig. I.4 1900 MHz CH661