



Report No.: SZ13080195S01



# SAR TEST REPORT

Issued to

**TCT Mobile Limited**

For

**TABLET**

Model Name : ONE TOUCH TAB 7 DUAL CORE  
 Trade Name : ALCATEL  
 Brand Name : ALCATEL  
 FCC ID : RAD426  
 Standard : 47CFR 2.1093  
                   ANSI C95.1-1999  
                   IEEE 1528-2003  
 MAX SAR : Body: 1.203 W/kg  
 Test date : 2013-9-13  
 Issue date : 2013-9-23

**Shenzhen MORLAB Communication Technology Co., Ltd.**



Tested by Zou Jian  
 ZouJian  
 (Test Engineer)  
 Date 2013.9.23

Approved by Zeng Dexin  
 Zeng Dexin  
 (Chief Engineer)  
 Date 2013.9.23

Review by Zhu Zhan  
 Zhu Zhan  
 (SAR Manager)  
 Date 2013.9.23



*The report refers only to the sample tested and does not apply to the bulk. This report is issued in confidence to the client and it will be strictly treated as such by the Shenzhen MORLAB Communication Technology Co., Ltd. It may not be reproduced either in its entirety or in part and it may not be used for advertising. The client to whom the report is issued may, however, show or send it, or a certified copy thereof prepared by the Shenzhen MORLAB Telecommunication Co., Ltd to his GPRSer. Supplier or others persons directly concerned. Shenzhen MORLAB Telecommunication Co., Ltd will not, without the consent of the client enter into any discussion of correspondence with any third party concerning the contents of the report. In the event of the improper use of the report, Shenzhen MORLAB Telecommunication Co., Ltd reserves the rights to withdraw it and to adopt any other remedies which may be appropriate.*

## DIRECTORY

<b>1. TESTING LABORATORY .....</b>	<b>4</b>
1.1. Identification of the Responsible Testing Location .....	4
1.2. Accreditation Certificate .....	4
1.3. List of Test Equipments .....	4
<b>2. TECHNICAL INFORMATION .....</b>	<b>5</b>
2.1. Identification of Applicant .....	5
2.2. Identification of Manufacturer .....	5
2.3. Equipment Under Test (EUT) .....	5
2.3.1. Photographs of the EUT .....	5
2.3.2. Identification of all used EUT .....	5
2.4. Applied Reference Documents .....	6
2.5. Device Category and SAR Limits .....	6
2.6. Test Environment/Conditions .....	7
<b>3. SPECIFIC ABSORPTION RATE (SAR) .....</b>	<b>8</b>
3.1. Introduction .....	8
3.2. SAR Definition .....	8
<b>4. SAR MEASUREMENT SETUP .....</b>	<b>9</b>
4.1. The Measurement System .....	9
4.2. Probe .....	9
4.3. Probe Calibration Process .....	11
4.3.1 Dosimetric Assessment Procedure .....	11
4.3.2 Free Space Assessment Procedure .....	11
4.3.2 Temperature Assessment Procedure .....	11
4.4. Phantom .....	12
4.5. Device Holder .....	12
<b>5. TISSUE SIMULATING LIQUIDS .....</b>	<b>13</b>
<b>6. UNCERTAINTY ASSESSMENT .....</b>	<b>14</b>
6.1. UNCERTAINTY EVALUATION FOR EUT SAR TEST .....	14
6.2. UNCERTAINTY FOR SYSTEM PERFORMANCE CHECK .....	15
<b>7. SAR MEASUREMENT EVALUATION .....</b>	<b>17</b>
7.1. System Setup .....	17
7.2. Validation Results .....	18

<b>8. OPERATIONAL CONDITIONS DURING TEST .....</b>	<b>19</b>
<b>8.1. Body-worn Configurations .....</b>	<b>19</b>
<b>8.2. Measurement procedure .....</b>	<b>19</b>
<b>8.3. Description of interpolation/extrapolation scheme .....</b>	<b>20</b>
<b>9.Measurement Of Conducted Peak Output Power.....</b>	<b>21</b>
<b>10. TEST RESULTS LIST.....</b>	<b>22</b>
<b>ANNEX A GRAPH TEST RESULTS.....</b>	<b>24</b>

Change History		
Issue	Date	Reason for change
1.0	Sep. 23 ,2013	First edition

## 1. Testing Laboratory

### 1.1. Identification of the Responsible Testing Location

Name: Shenzhen Morlab Communications Technology Co., Ltd.  
Morlab Laboratory

Address: 3/F, Electronic Testing Building, Shahe Road, Nanshan District, Shenzhen, 518055 P. R. China

### 1.2. Accreditation Certificate

Accredited Testing Laboratory: No. CNAS L3572

### 1.3. List of Test Equipments

No.	Instrument	Type	Cal. Date	Cal. Due
1	PC	Dell (Pentium IV 2.4GHz, SN:X10-23533)	(n.a)	(n.a)
2	Network Emulator	Rohde&Schwarz (CMU200, SN:105894)	2012-9-26	1year
3	Network Analyzer	Agilent ( E5071B SN:MY42404762 )	2012-9-26	1year
4	Voltmeter	Keithley (2000, SN:1000572)	2012-9-24	1year
5	Signal Generator	Rohde&Schwarz (SMP_02 )	2012-9-24	1year
6	Amplifier	PRANA (Ap32 SV125AZ)	2012-9-24	1year
7	Power Meter	Rohde&Schwarz (NRVD, SN:101066)	2012-9-24	1year
8	Directional coupler	Giga-tronics(SN:1829112)	2012-9-24	1year
9	Probe	Satimo (SN:SN_3708_EP80)	2012-10-4	1year
10	Dielectric Probe Kit	Agilent (85033E )	2012-9-24	1year
11	Phantom	Satimo (SN:SN_36_08_SAM62)	2012-9-24	1year
12	Liquid	Satimo (Last Calibration: 2013-9-13)	N/A	N.A
13	Dipole 2450MHz	Satimo (SN 36/08 DIPJ 103)	2012-10-5	1year

## 2. Technical Information

Note: the following data is based on the information by the applicant.

### 2.1. Identification of Applicant

Company Name: TCT Mobile Limited  
 Address: 5F, C building, No. 232, Liang Jing Road ZhangJiang High-Tech Park, Pudong Area Shanghai, P.R. China. 201203

### 2.2. Identification of Manufacturer

Company Name: TCL COMMUNICATION TECHNOLOGY HOLDINGS LIMITED.  
 Address: 70 Huifeng 4rd, ZhongKai Hi-tech Development District, Huizhou, Guangdong 516006 P.R. China  
 (TCL Mobile Communication Co.,LTD.Huizhou)

### 2.3. Equipment Under Test (EUT)

Model Name: ONE TOUCH TAB 7 DUAL CORE  
 Trade Name: ALCATEL  
 Brand Name: ALCATEL  
 Hardware Version: V2.0  
 Software Version: 102  
 Frequency Bands: WIFI802.11 B/G/N  
 Modulation Mode: WIFI802.11B: DSSS; WIFI802.11G: OFDM  
 WIFI802.11N: OFDM  
 Antenna type: Fixed Internal Antenna  
 Development Stage: Identical prototype  
 Battery Model: TLp030CE  
 Battery specification: 3.7V,3000mAh

#### 2.3.1. Photographs of the EUT

Please see for photographs of the EUT.

#### 2.3.2. Identification of all used EUT

The EUT identity consists of numerical and letter characters, the letter character indicates the test sample, and the following two numerical characters indicate the software version of the test sample.

EUT Identity	Hardware Version	Software Version
1#	V2.0	102

## 2.4. Applied Reference Documents

Leading reference documents for testing:

No.	Identity	Document Title
1	<b>47 CFR§2.1093</b>	Radiofrequency Radiation Exposure Evaluation: Portable Devices
2	<b>ANSI C95.1-1999</b>	IEEE Standard for Safety Levels with Respect to Human Exposure to Radio Frequency Electromagnetic Fields, 3kHz to 300 GHz
3	<b>IEEE 1528-2003</b>	Recommended Practice for Determining the Peak Spatial-Average Specific Absorption Rate(SAR) in the Human Body Due to Wireless Communications Devices: Experimental Techniques.
4	<b>KDB616217D04v01r01</b>	SAR Evaluation Considerations for Laptop, Notebook, Netbook and Tablet Computers
5	<b>KDB447498D01v05r01</b>	Mobile and Portable Devices RF Exposure Procedures and Equipment Authorization Policies
6	<b>KDB 248227 D01</b>	SAR Measurement Procedures for 802.11 a/b/g Transmitters

## 2.5. Device Category and SAR Limits

This device belongs to portable device category because its radiating structure is allowed to be used within 20 centimeters of the body of the user. Limit for General Population/Uncontrolled exposure should be applied for this device, it is 1.6 W/kg as averaged over any 1 gram of tissue.

## 2.6. Test Environment/Conditions

Normal Temperature (NT):	20 ... 25 °C
Relative Humidity:	30 ... 75 %
Air Pressure:	980 ... 1020 hPa
Test frequency:	WIFI 802.11B/G/N
Operation mode:	Data Transmitting
Power Level:	WIFI Maximum output power

During SAR test, EUT is in Traffic Mode (Channel Allocated) at Normal Voltage Condition. A communication link is set up with a System Simulator (SS) by air link, and a call is established.

During WIFI SAR test, the EUT was located at channel 1, 6, 11. And EUT was commanded to operate at maximum transmitting power.

The EUT shall use its internal transmitter. The antenna(s), battery and accessories shall be those specified by the manufacturer. The EUT battery must be fully charged and checked periodically during the test to ascertain uniform power output. If a wireless link is used, the antenna connected to the output of the base station simulator shall be placed at least 50 cm away from the handset.

The signal transmitted by the simulator to the antenna feeding point shall be lower than the output power level of the handset by at least 35 dB.

Engineering testing software installed on the EUT can provide continuous transmitting RF signal. The RF signal utilized in SAR measurement has almost 100% duty cycle, and its crest factor is 1.

### 3. Specific Absorption Rate (SAR)

#### 3.1. Introduction

SAR is related to the rate at which energy is absorbed per unit mass in an object exposed to a radio field. The SAR distribution in a biological body is complicated and is usually carried out by experimental techniques or numerical modeling. The standard recommends limits for two tiers of groups, occupational/controlled and general population/uncontrolled, based on a person's awareness and ability to exercise control over his or her exposure. In general, occupational/controlled exposure limits are higher than the limits for general population/uncontrolled.

#### 3.2. SAR Definition

The SAR definition is the time derivative (rate) of the incremental energy (dW) absorbed by (dissipated in) an incremental mass (dm) contained in a volume element (dv) of a given density ( $\rho$ ). The equation description is as below:

$$\mathbf{SAR} = \frac{d}{dt} \left( \frac{dW}{dm} \right) = \frac{d}{dt} \left( \frac{dW}{\rho dv} \right)$$

SAR is expressed in units of Watts per kilogram (W/kg)

SAR measurement can be either related to the temperature elevation in tissue by

$$\mathbf{SAR} = C \left( \frac{\delta T}{\delta t} \right)$$

, where C is the specific heat capacity,  $\delta T$  is the temperature rise and  $\delta t$  the exposure duration, or related to the electrical field in the tissue by

$$\mathbf{SAR} = \frac{\sigma |E|^2}{\rho}$$

, where  $\sigma$  is the conductivity of the tissue,  $\rho$  is the mass density of the tissue and E is the rms electrical field strength.

However for evaluating SAR of low power transmitter, electrical field measurement is typically applied.



## 4. SAR Measurement Setup

### 4.1. The Measurement System

Comosar is a system that is able to determine the SAR distribution inside a phantom of human being according to different standards. The Comosar system consists of the following items:

- Main computer to control all the system
- 6 axis robot
- Data acquisition system
- Miniature E-field probe
- Phone holder
- Head simulating tissue

The following figure shows the system.



The EUT under test operating at the maximum power level is placed in the phone holder, under the phantom, which is filled with head simulating liquid. The E-Field probe measures the electric field inside the phantom. The OpenSAR software computes the results to give a SAR value in a 1g or 10g mass.

### 4.2. Probe

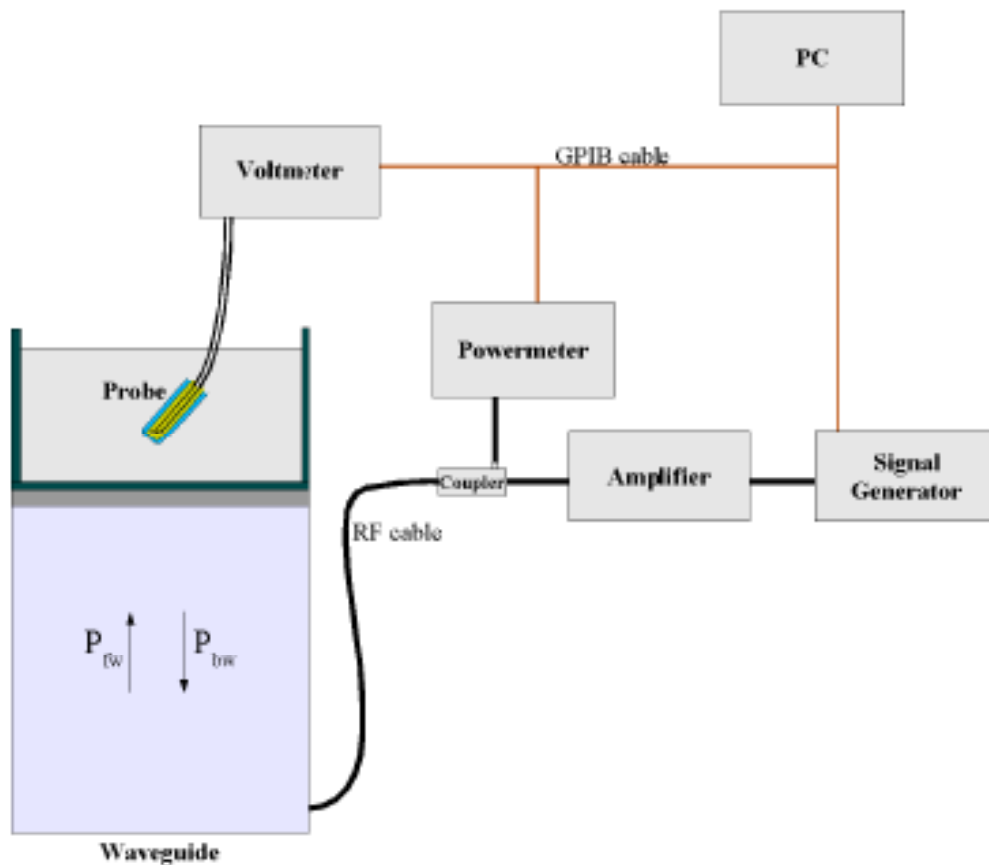
For the measurements the Specific Dosimetric E-Field Probe SN 37/08 EP80 with following specifications is used

- Dynamic range: 0.01-100 W/kg
- Tip Diameter : 6.5 mm
- Distance between probe tip and sensor center: 2.5mm
- Distance between sensor center and the inner phantom surface: 4 mm  
(repeatability better than +/- 1mm)

- Probe linearity: <0.25 dB
- Axial Isotropy: <0.25 dB
- Spherical Isotropy: <0.25 dB
- Calibration range: 835 to 2500 MHz for head & body simulating liquid.

Angle between probe axis (evaluation axis) and surface normal line: less than 30°

Probe calibration is realized, in compliance with CENELEC EN 62209 and IEEE 1528 std, with CALISAR, Antenna proprietary calibration system. The calibration is performed with the EN 62209-1 annexe technique using reference guide at the five frequencies.



$$SAR = \frac{4(P_{fw} - P_{bw})}{ab\delta} \cos^2\left(\pi \frac{y}{a}\right) e^{-2z/\delta}$$

Where :

$P_{fw}$  = Forward Power

$P_{bw}$  = Backward Power

a and b = Waveguide dimensions

$\delta$  = Skin depth

Keithley configuration:

Rate = Medium; Filter = ON; RDGS=10; FILTER TYPE = MOVING AVERAGE; RANGE AUTO

After each calibration, a SAR measurement is performed on a validation dipole and compared with a NPL calibrated probe, to verify it.

The calibration factors, CF(N), for the 3 sensors corresponding to dipole 1, dipole 2 and dipole 3 are:

$$CF(N)=SAR(N)/V_{lin}(N) \quad (N=1,2,3)$$

The linearised output voltage  $V_{lin}(N)$  is obtained from the displayed output voltage  $V(N)$  using

$$V_{lin}(N)=V(N)*(1+V(N)/DCP(N)) \quad (N=1,2,3)$$

where DCP is the diode compression point in mV.

### 4.3. Probe Calibration Process

#### 4.3.1 Dosimetric Assessment Procedure

Each E-Probe/Probe Amplifier combination has unique calibration parameters. SATIMO Probe calibration procedure is conducted to determine the proper amplifier settings to enter in the probe parameters. The amplifier settings are determined for a given frequency by subjecting the probe to a known E-field density (1 mW/cm<sup>2</sup>) using an with CALISAR, Antenna proprietary calibration system.

#### 4.3.2 Free Space Assessment Procedure

The free space E-field from amplified probe outputs is determined in a test chamber. This calibration can be performed in a TEM cell if the frequency is below 1 GHz and in a waveguide or other methodologies above 1 GHz for free space. For the free space calibration, the probe is placed in the volumetric center of the cavity and at the proper orientation with the field. The probe is rotated 360 degrees until the three channels show the maximum reading. The power density readings equates to 1 mW/cm<sup>2</sup>.

#### 4.3.2 Temperature Assessment Procedure

E-field temperature correlation calibration is performed in a flat phantom filled with the appropriate simulated head tissue. The E-field in the medium correlates with the temperature rise in the dielectric medium. For temperature correlation calibration a RF transparent thermistor-based temperature probe is used in conjunction with the E-field probe.

Where:

$\Delta t$  = exposure time (30 seconds),

C = heat capacity of tissue (brain or muscle),

$\Delta T$  = temperature increase due to RF exposure.

$$SAR = C \left( \frac{\delta T}{\delta t} \right)$$

SAR is proportional to  $\Delta T / \Delta t$ , the initial rate of tissue heating, before thermal diffusion takes place. The electric field in the simulated tissue can be used to estimate SAR by equating the thermally derived SAR to that with the E- field component.

$$\text{SAR} = \frac{\sigma |E|^2}{\rho}$$

Where:

$\sigma$  = simulated tissue conductivity,

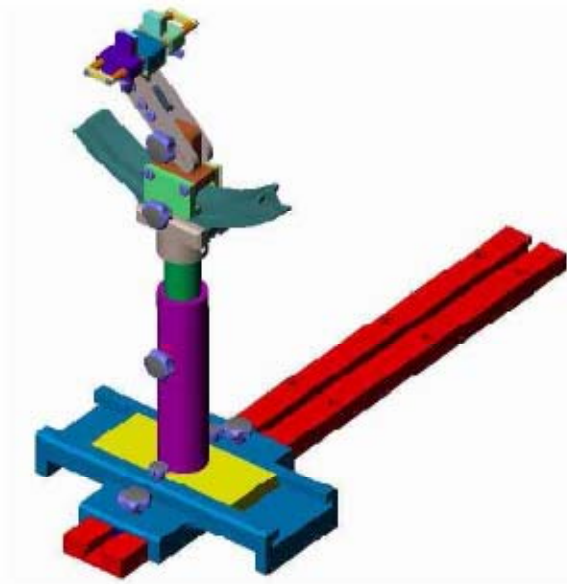
$\rho$  = Tissue density (1.25 g/cm<sup>3</sup> for brain tissue)

#### 4.4. Phantom

For the measurements the Specific Anthropomorphic Mannequin (SAM) defined by the IEEE SCC-34/SC2 group is used. The phantom is a polyurethane shell integrated in a wooden table. The thickness of the phantom amounts to 2mm +/- 0.2mm. It enables the dosimetric evaluation of left and right phone usage and includes an additional flat phantom part for the simplified performance check. The phantom set-up includes a cover, which prevents the evaporation of the liquid.

#### 4.5. Device Holder

The positioning system allows obtaining cheek and tilting position with a very good accuracy. In compliance with CENELEC, the tilt angle uncertainty is lower than 1°.



Device holder

System Material	Permittivity	Loss Tangent
Delrin	3.7	0.005

## 5. Tissue Simulating Liquids

For SAR measurement of the field distribution inside the phantom, the phantom must be filled with homogeneous tissue simulating liquid to a depth of at least 15 cm. For body SAR testing, the liquid height from the center of the flat phantom to the liquid top surface is larger than 15 cm. The nominal dielectric values of the tissue simulating liquids in the phantom and the tolerance of 5% are listed in below table.

The following table gives the recipes for tissue simulating liquids

Ingredients (% by weight )	Frequency Band
	2450MHz
Tissue Type	Body
Water	73.2
Salt(NaCl)	0.04
Sugar	0.0
HEC	0.0
Bactericide	0.0
Triton	0.0
DGBE	0.0
Acticide SPX	26.7
Dielectric Constant	52.7
Conductivity (S/m)	1.97

Recipes for Tissue Simulating Liquid

The dielectric properties of the tissue simulating liquids were verified prior to the SAR evaluation using an Agilent 85033E Dielectric Probe Kit and an Agilent Network Analyzer.

**Table 1: Dielectric Performance of Body Tissue Simulating Liquid**

Temperature: 22.0~23.8°C, humidity: 54~60%.						
Date	Freq.(MHz)	Liquid Parameters	Meas.	Target	Delta(%)	Limit±(%)
2013/9/13	Body 2450	Relative Permittivity( $\epsilon_r$ ):	52.53	52.7	-0.32	5
		Conductivity( $\sigma$ ):	1.90	1.95	-1.03	5

## 6. Uncertainty Assessment

The following table includes the uncertainty table of the IEEE 1528. The values are determined by Antennessa.

### 6.1. UNCERTAINTY EVALUATION FOR EUT SAR TEST

a	b	c	d	e= f(d,k)	f	g	h= c*f/e	i= c*g/e	k
Uncertainty Component	Sec.	Tol (+-%)	Prob. Dist.	Div.	Ci (1g)	Ci (10g)	1g Ui (+-%)	10g Ui (+-%)	Vi
<b>Measurement System</b>									
Probe calibration	E.2.1	4.76	N	1	1	1	4.76	4.76	$\infty$
Axial Isotropy	E.2.2	2.5	R	$\sqrt{3}$	0.7	0.7	1.01	1.01	$\infty$
Hemispherical Isotropy	E.2.2	4.0	R	$\sqrt{3}$	0.7	0.7	1.62	1.62	$\infty$
Boundary effect	E.2.3	1.0	R	$\sqrt{3}$	1	1	0.58	0.58	$\infty$
Linearity	E.2.4	5.0	R	$\sqrt{3}$	1	1	2.89	2.89	$\infty$
System detection limits	E.2.5	1.0	R	$\sqrt{3}$	1	1	0.58	0.58	$\infty$
Readout Electronics	E.2.6	0.02	N	1	1	1	0.02	0.02	$\infty$
Reponse Time	E.2.7	3.0	R	$\sqrt{3}$	1	1	1.73	1.73	$\infty$
Integration Time	E.2.8	2.0	R	$\sqrt{3}$	1	1	1.15	1.15	$\infty$
RF ambient Conditions	E.6.1	3.0	R	$\sqrt{3}$	1	1	1.73	1.73	$\infty$
Probe positioner Mechanical Tolerance	E.6.2	2.0	R	$\sqrt{3}$	1	1	1.15	1.15	$\infty$
Probe positioning with respect to Phantom Shell	E.6.3	0.05	R	$\sqrt{3}$	1	1	0.03	0.03	$\infty$
Extrapolation, interpolation and integration Algorithms for Max. SAR Evaluation	E.5.2	5.0	R	$\sqrt{3}$	1	1	2.89	2.89	$\infty$
<b>Test sample Related</b>									
Test sample positioning	E.4.2.1	0.03	N	1	1	1	0.03	0.03	N-1
Device Holder Uncertainty	E.4.1.1	5.00	N	1	1	1	5.00	5.00	N-1
Output power Power drift - SAR drift measurement	6.6.2	4.04	R	$\sqrt{3}$	1	1	2.33	2.33	$\infty$
<b>Phantom and Tissue Parameters</b>									
Phantom Uncertainty (Shape and thickness tolerances)	E.3.1	0.05	R	$\sqrt{3}$	1	1	0.03	0.03	$\infty$
Liquid conductivity - deviation	E.3.2	4.57	R	$\sqrt{3}$	0.64	0.43	1.69	1.13	$\infty$

from target value									
Liquid conductivity - measurement uncertainty	E.3.3	5.00	N	1	0.64	0.43	3.20	2.15	M
Liquid permittivity - deviation from target value	E.3.2	3.69	R	$\sqrt{3}$	0.6	0.49	1.28	1.04	$\infty$
Liquid permittivity - measurement uncertainty	E.3.3	10.00	N	1	0.6	0.49	6.00	4.90	M
Combined Standard Uncertainty			RSS				11.55	10.67	
Expanded Uncertainty (95% Confidence interval)			K=2				23.11	21.33	

## 6.2. UNCERTAINTY FOR SYSTEM PERFORMANCE CHECK

a	b	c	d	e= f(d,k)	f	g	h= c*f/e	i= c*g/e	k
Uncertainty Component	Sec.	Tol (+- % )	Prob. Dist.	Div.	Ci (1g)	Ci (10g)	1g Ui (+-%)	10g Ui (+-%)	Vi
<b>Measurement System</b>									
Probe calibration	E.2.1	4.76	N	1	1	1	4.76	4.76	$\infty$
Axial Isotropy	E.2.2	2.5	R	$\sqrt{3}$	0.7	0.7	1.01	1.01	$\infty$
Hemispherical Isotropy	E.2.2	4.0	R	$\sqrt{3}$	0.7	0.7	1.62	1.62	$\infty$
Boundary effect	E.2.3	1.0	R	$\sqrt{3}$	1	1	0.58	0.58	$\infty$
Linearity	E.2.4	5.0	R	$\sqrt{3}$	1	1	2.89	2.89	$\infty$
System detection limits	E.2.5	1.0	R	$\sqrt{3}$	1	1	0.58	0.58	$\infty$
Readout Electronics	E.2.6	0.02	N	1	1	1	0.02	0.02	$\infty$
Reponse Time	E.2.7	3.0	R	$\sqrt{3}$	1	1	1.73	1.73	$\infty$
Integration Time	E.2.8	2.0	R	$\sqrt{3}$	1	1	1.15	1.15	$\infty$
RF ambient Conditions	E.6.1	3.0	R	$\sqrt{3}$	1	1	1.73	1.73	$\infty$
Probe positioner Mechanical Tolerance	E.6.2	2.0	R	$\sqrt{3}$	1	1	1.15	1.15	$\infty$
Probe positioning with respect to Phantom Shell	E.6.3	0.05	R	$\sqrt{3}$	1	1	0.03	0.03	$\infty$
Extrapolation, interpolation and integration Algorithms for Max. SAR Evaluation	E.5.2	5.0	R	$\sqrt{3}$	1	1	2.89	2.89	$\infty$
<b>Dipole</b>									
Dipole axis to liquid Distance	8,E.4.2	1.00	N	$\sqrt{3}$	1	1	0.58	0.58	$\infty$
Input power and SAR drift	8,6.6.2	4.04	R	$\sqrt{3}$	1	1	2.33	2.33	$\infty$

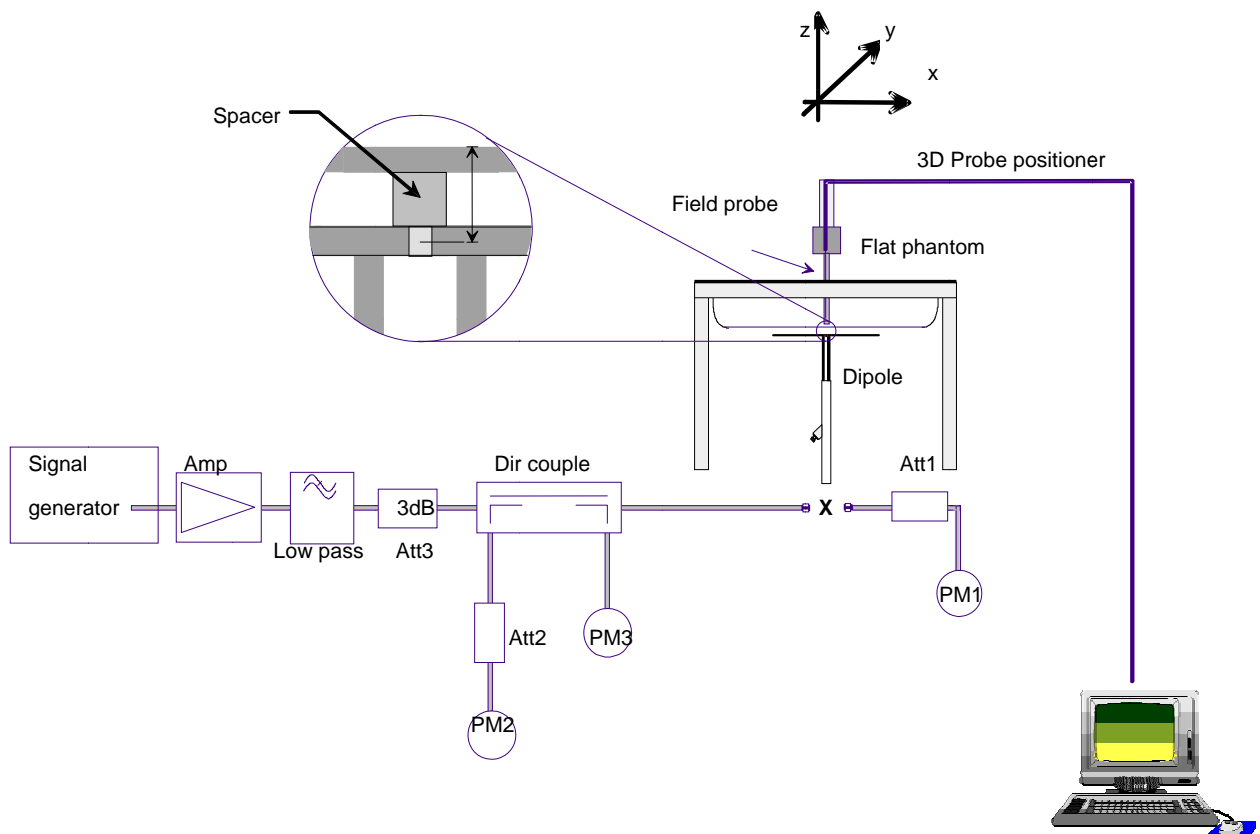
measurement									
<b>Phantom and Tissue Parameters</b>									
Phantom Uncertainty (Shape and thickness tolerances)	E.3.1	0.05	R	$\sqrt{3}$	1	1	0.03	0.03	$\infty$
Liquid conductivity - deviation from target value	E.3.2	4.57	R	$\sqrt{3}$	0.64	0.43	1.69	1.13	$\infty$
Liquid conductivity - measurement uncertainty	E.3.3	5.00	N	$\sqrt{3}$	0.64	0.43	1.85	1.24	M
Liquid permittivity - deviation from target value	E.3.2	3.69	R	$\sqrt{3}$	0.6	0.49	1.28	1.04	$\infty$
Liquid permittivity - measurement uncertainty	E.3.3	10.00	N	$\sqrt{3}$	0.6	0.49	3.46	2.83	M
Combined Standard Uncertainty			RSS				8.83	8.37	
Expanded Uncertainty (95% Confidence interval)			K=2				17.66	16.7	3



## 7. SAR Measurement Evaluation

### 7.1. System Setup

In the simplified setup for system evaluation, the DUT is replaced by a calibrated dipole and the power source is replaced by a continuous wave which comes from a signal generator. The calibrated dipole must be placed beneath the flat phantom section of the SAM twin phantom with the correct distance holder. The distance holder should touch the phantom surface with a light pressure at the reference marking and be oriented parallel to the long side of the phantom. The system check verifies that the system operates within its specifications. It is performed daily or before every SAR measurement. The system check uses normal SAR measurements in the flat section of the phantom with a matched dipole at a specified distance. The system verification setup is shown as below.



The validation dipole is placed beneath the flat phantom with the specific spacer in place. The distance spacer is touch the phantom surface with a light pressure at the reference marking and be oriented parallel to the long side of the phantom. The power meter PM1 measures the forward power at the location of the system check dipole connector. The signal generator is adjusted for the desired forward power at the dipole connector and the power meter PM2 is read at that level. After connecting the cable to the dipole, the signal generator is readjusted for the same reading at power meter PM2.

## 7.2. Validation Results

Comparing to the original SAR value provided by SATIMO, the validation data should be within its specification of 10 %.

<b>Frequency</b>	2450MHz(Body)
<b>Target value 1W (1g)</b>	53.590 W/Kg
<b>Test value 1g (250 mW input power)</b>	12.842 W/Kg
<b>Normalized to 1W value (1g)</b>	51.368 W/Kg

**Note:** System checks the specific test data please see page 37~38.

## 8. Operational Conditions During Test

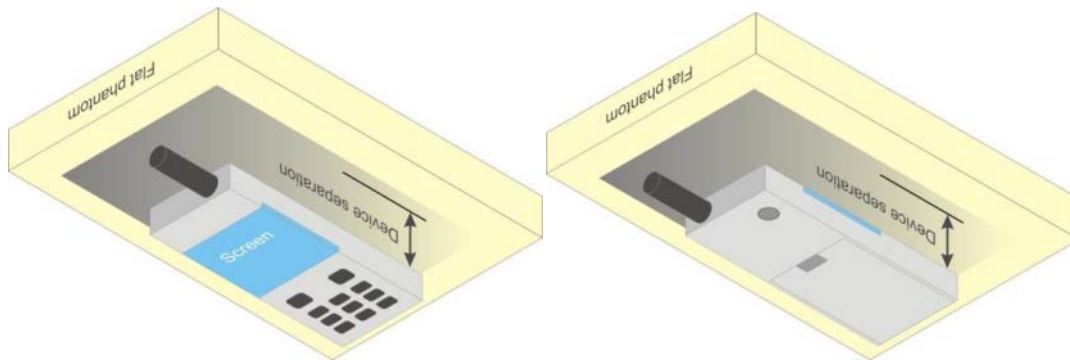
The EUT antenna and battery are those specified by the manufacturer. The battery is fully charged before each measurement. The output power and frequency are controlled using a base station simulator. The EUT is set to transmit at its highest output peak power level.

Remark: Please refer to Appendix B for the test setup photos.

### 8.1. Body-worn Configurations

The body-worn configurations shall be tested with the supplied accessories (belt-clips, holsters, etc.) attached to the device in normal use configuration..The depth of the body tissue was 15.1cm.

For body-worn and other configurations a flat phantom shall be used which is comprised of material with electrical properties similar to the corresponding tissues.



**Illustration for Body Worn Position**

### 8.2. Measurement procedure

The following steps are used for each test position

- Establish a call with the maximum output power with a base station simulator. The connection between the mobile and the base station simulator is established via air interface
- Measurement of the local E-field value at a fixed location. This value serves as a reference value for calculating a possible power drift.
- Measurement of the SAR distribution with a grid of 8 to 16mm \* 8 to 16 mm and a constant distance to the inner surface of the phantom. Since the sensors can not directly measure at the inner phantom surface, the values between the sensors and the inner phantom surface are extrapolated. With these values the area of the maximum SAR is calculated by an interpolation scheme.
- Around this point, a cube of 30 \* 30 \* 30 mm or 32 \* 32 \* 32 mm is assessed by measuring 5 or 8 \* 5 or 8\*4 or 5 mm. With these data, the peak spatial-average SAR value can be calculated.

### **8.3. Description of interpolation/extrapolation scheme**

The local SAR inside the phantom is measured using small dipole sensing elements inside a probe body. The probe tip must not be in contact with the phantom surface in order to minimize measurements errors, but the highest local SAR will occur at the surface of the phantom.

An extrapolation is using to determinate this highest local SAR values. The extrapolation is based on a fourth-order least-square polynomial fit of measured data. The local SAR value is then extrapolated from the liquid surface with a 1mm step.

The measurements have to be performed over a limited time (due to the duration of the battery) so the step of measurement is high. It could vary between 5 and 8 mm. To obtain an accurate assessment of the maximum SAR averaged over 10 grams and 1 gram requires a very fine resolution in the three dimensional scanned data array.

## 9.Measurement Of Conducted Peak Output Power.

### 1. Wifi peak output power

Band	Channel	Frequency (MHz)	Output Power(dBm)		
			802.11B (DSSS)	802.11G (OFDM)	802.11N20 (OFDM)
WiFi	1	2412	15.88	10.09	10.18
	6	2437	16.19	10.78	10.66
	11	2462	16.25	11.16	11.09

Band	Channel	Frequency (MHz)	Output Power(dBm)
			802.11N40 (OFDM)
Wifi	3	2422	9.85
	6	2437	10.21
	9	2452	10.58

## 10. Test Results List

Summary of Measurement Results (WLAN 802.11 Band)

Temperature: 21.0~23.8°C, humidity: 54~60%.						
Phantom Configurations	Description			SAR(W/Kg) , 1g Peak	Scaling Factor	Scaled SAR(W/Kg) , 1g Peak
	Device Test Positions	Mode	Channel			
Body (0mm)	Back Upward	B	1	0.830	1.153	0.957
			6	0.875	1.074	0.940
			11	1.136	1.059	1.203
	Face Upward		11	0.626	1.059	0.663
	Edge A		11	0.475	1.059	0.503
	Edge B		11	0.073	1.059	0.077

Note:

- Based on the Measurement Of Conducted Peak Output Power, the max power of 801.11b is 42.170mW >10mW (Per KDB 447498 D01v05r01, Power Threshold for 2450MHz at test distance of 5mm),the SAR test for 802.11b is required, 802.11g/HT20/HT40 is not required, for the maximum average output power is less than 1/4 dB higher than measured on the corresponding 802.11b channels.
- The SAR is performed on the highest power channel, refer to KDB 447498, when the SAR of highest power channel of each configurations is less than 0.8 W/kg, testing for the other channels is not required.

### 3.Scaled SAR calculation

Band	Turn up Power (dBm)	SAR test Channel Power (dBm)	Scaling Factor
802.11B band	16 ±0.5 dBm	15.88(Low)	1.153
		16.19(Middle)	1.074
		16.25(High)	1.059

- Per KDB 616217 D04v01r01,The antennas embedded in tablets are typically  $\leq$  5mm from the outer housing. When the dedicated host approach is applied, the back surface and edges of the tablet should be tested for SAR compliance with the tablet touching the phantom..

Edge configuration



## Annex A Graph Test Results

<b><u>BAND</u></b>	<b><u>PARAMETERS</u></b>
<b><u>WIFI</u></b> <b><u>802.11B</u></b>	<u>Measurement 1:</u> Flat Plane with Body device position on Low channel (Back upward)
	<u>Measurement 2:</u> Flat Plane with Body device position on Middle channel (Back upward)
	<u>Measurement 3:</u> Flat Plane with Body device position on High channel (Back upward)
	<u>Measurement 4:</u> Flat Plane with Body device position on High channel (Face upward)
	<u>Measurement 5:</u> Flat Plane with Body device position on High channel (Edge A)
	<u>Measurement 6:</u> Flat Plane with Body device position on High channel (Edge B)



# MEASUREMENT 1

Type: Phone measurement (Complete)

Area scan resolution: dx=8mm,dy=8mm

Zoom scan resolution: dx=8mm, dy=8mm, dz=5mm

Date of measurement: 2013.9.13

Measurement duration: 9 minutes 32 seconds

## A. Experimental conditions.

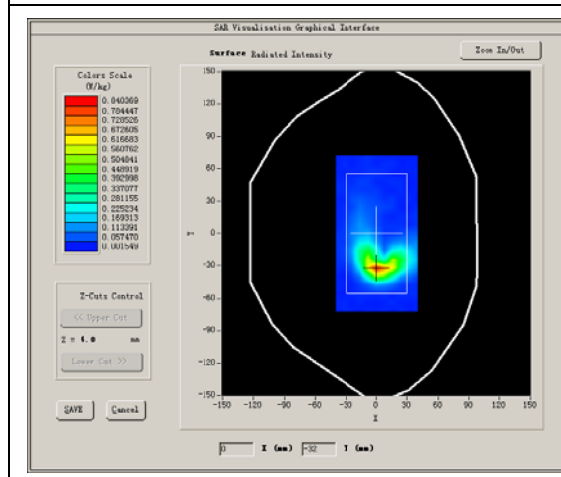
Phantom File	surf_sam_plan.txt
Phantom	Flat Plane
Device Position	Body
Band	802.11B
Channels	Low
Signal	Duty Cycle: 1.00

## B. SAR Measurement Results

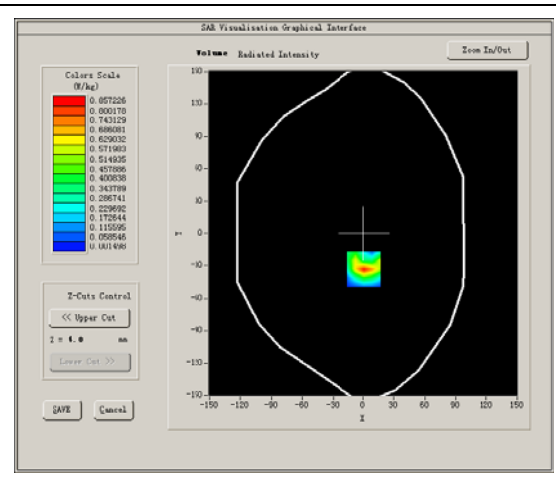
### Lower band SAR (channel 1):

Frequency (MHz)	2412.000000
Relative permittivity (real part)	52.534839
Conductivity (S/m)	1.901384
Power drift (%)	-4.760000
Ambient Temperature:	22.6°C
Liquid Temperature:	22.3°C
ConvF:	39.772,33.946,37.835
Crest factor:	1:1

### SURFACE SAR



### VOLUME SAR

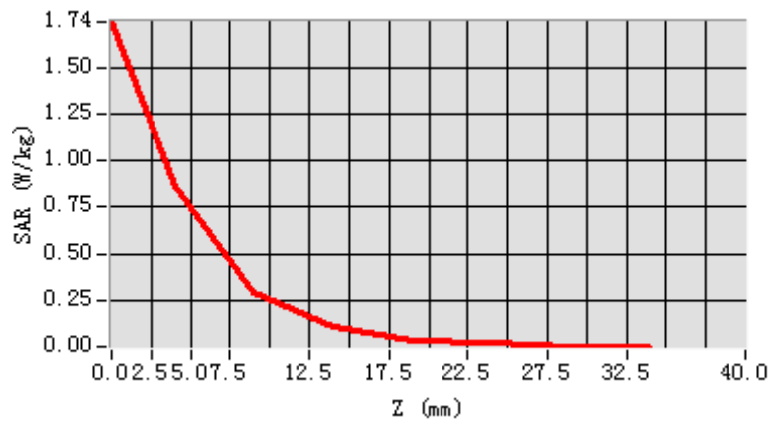


**Maximum location: X=1.00, Y=-33.00**

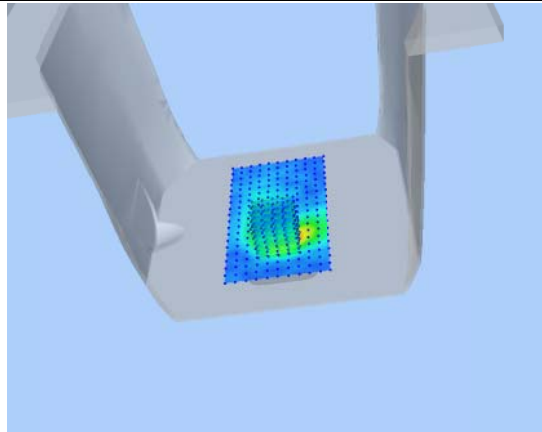
**SAR Peak: 1.84 W/kg**

<b>SAR 10g (W/Kg)</b>	0.316509
<b>SAR 1g (W/Kg)</b>	0.829779

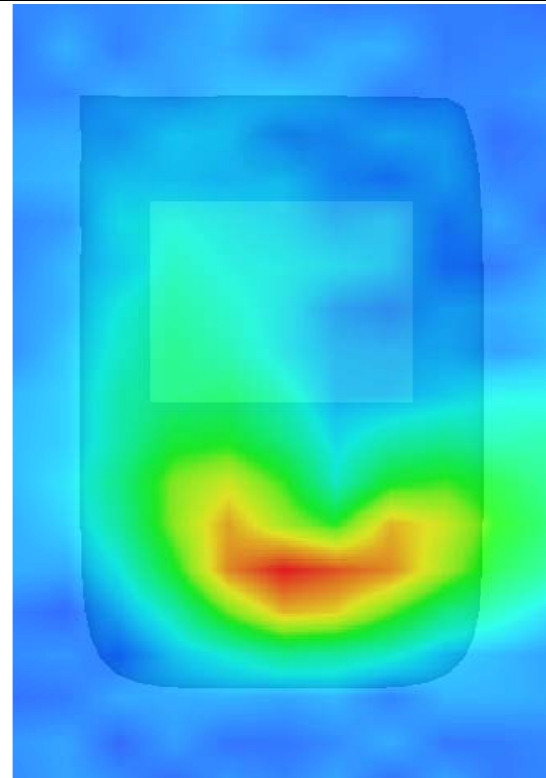
**Z axis scan**



**3D screen shot**



**Hot spot position**



## MEASUREMENT 2

Type: Phone measurement (Complete)

Area scan resolution: dx=8mm,dy=8mm

Zoom scan resolution: dx=8mm, dy=8mm, dz=5mm

Date of measurement: 2013.9.13

Measurement duration: 9 minutes 33 seconds

### A. Experimental conditions.

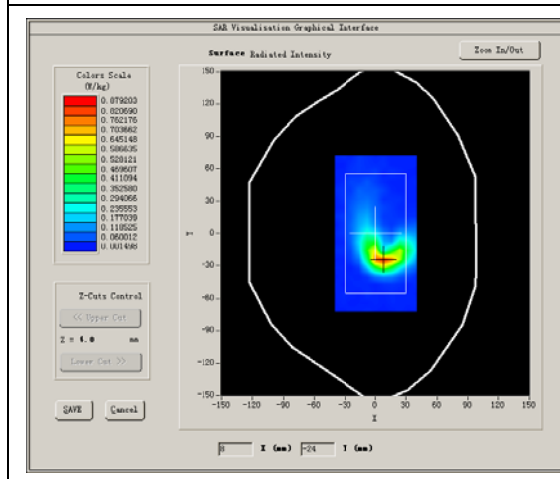
<b>Phantom File</b>	surf_sam_plan.txt
<b>Phantom</b>	Flat Plane
<b>Device Position</b>	Body
<b>Band</b>	802.11B
<b>Channels</b>	Middle
<b>Signal</b>	Duty Cycle: 1.00

### B. SAR Measurement Results

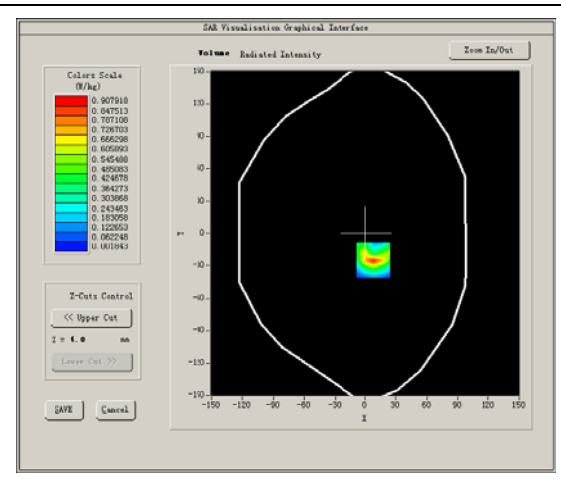
#### Middle band SAR (channel 6):

<b>Frequency (MHz)</b>	2437.000000
<b>Relative permittivity (real part)</b>	52.534839
<b>Conductivity (S/m)</b>	1.901384
<b>Power drift (%)</b>	-2.920000
<b>Ambient Temperature:</b>	22.6°C
<b>Liquid Temperature:</b>	22.3°C
<b>ConvF:</b>	39.772,33.946,37.835
<b>Crest factor:</b>	1:1

#### SURFACE SAR

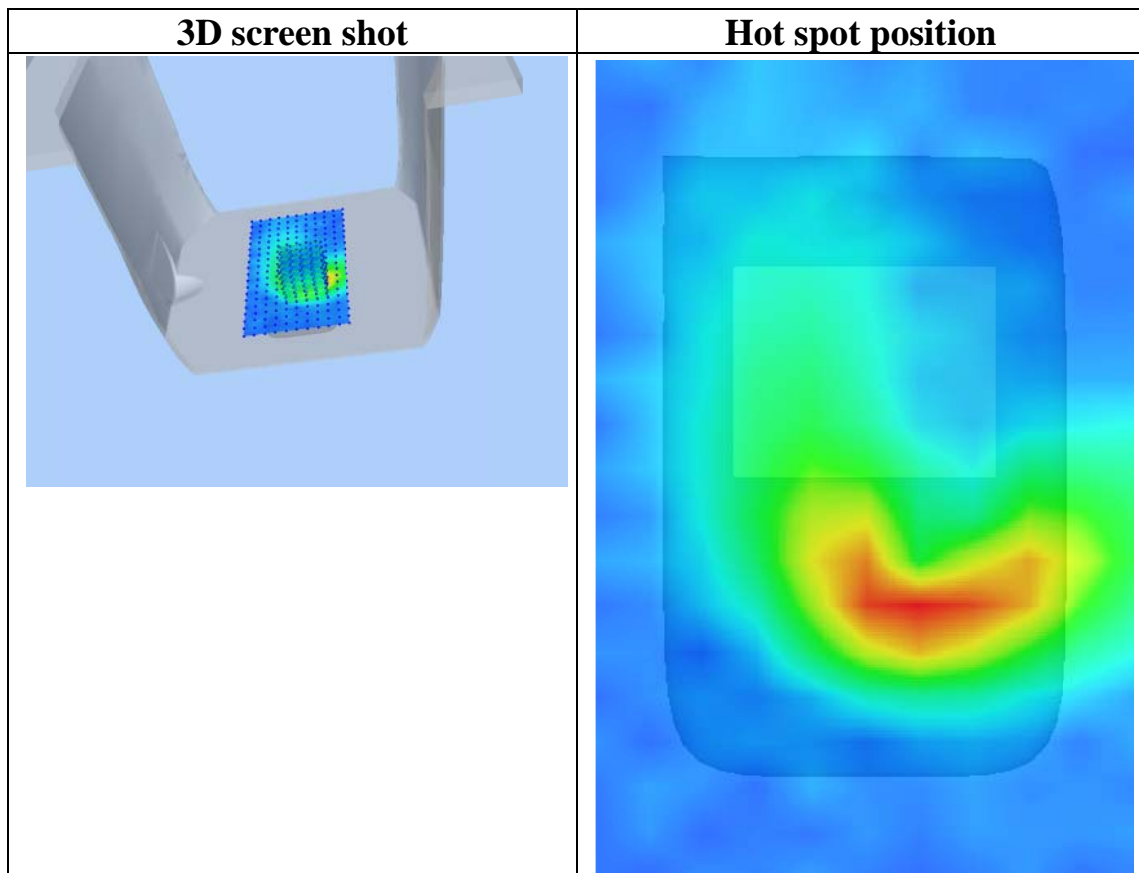
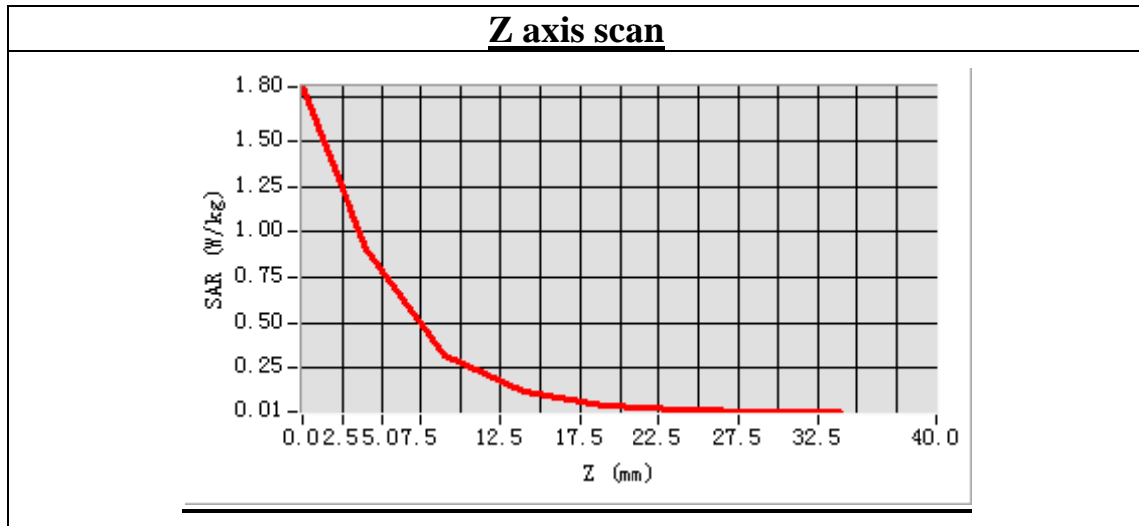


#### VOLUME SAR



Maximum location: X=8.00, Y=-25.00  
 SAR Peak: 1.92 W/kg

SAR 10g (W/Kg)	0.328790
SAR 1g (W/Kg)	0.875335



## MEASUREMENT 3

Type: Phone measurement (Complete)

Area scan resolution: dx=8mm,dy=8mm

Zoom scan resolution: dx=8mm, dy=8mm, dz=5mm

Date of measurement: 2013.9.13

Measurement duration: 9 minutes 27 seconds

### A. Experimental conditions.

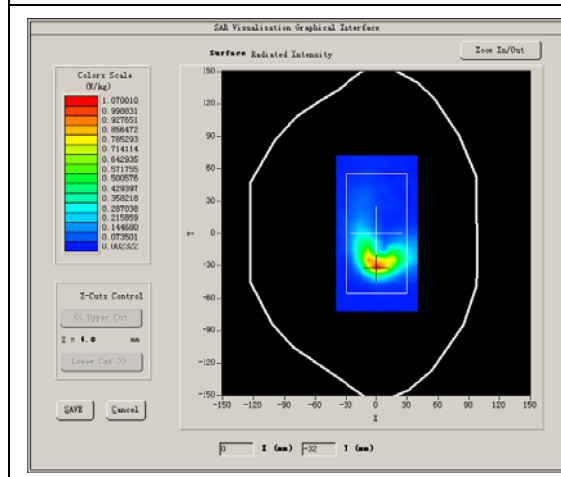
<b>Phantom File</b>	surf_sam_plan.txt
<b>Phantom</b>	Flat Plane
<b>Device Position</b>	Body
<b>Band</b>	802.11B
<b>Channels</b>	High
<b>Signal</b>	Duty Cycle: 1.00

### B. SAR Measurement Results

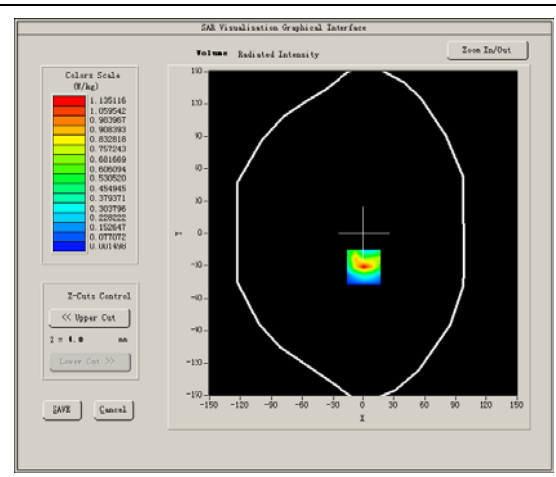
#### Higher band SAR (channel 11):

<b>Frequency (MHz)</b>	2462.000000
<b>Relative permittivity (real part)</b>	52.534839
<b>Conductivity (S/m)</b>	1.901384
<b>Power drift (%)</b>	4.010000
<b>Ambient Temperature:</b>	22.6°C
<b>Liquid Temperature:</b>	22.3°C
<b>ConvF:</b>	39.772,33.946,37.835
<b>Crest factor:</b>	1:1

#### SURFACE SAR

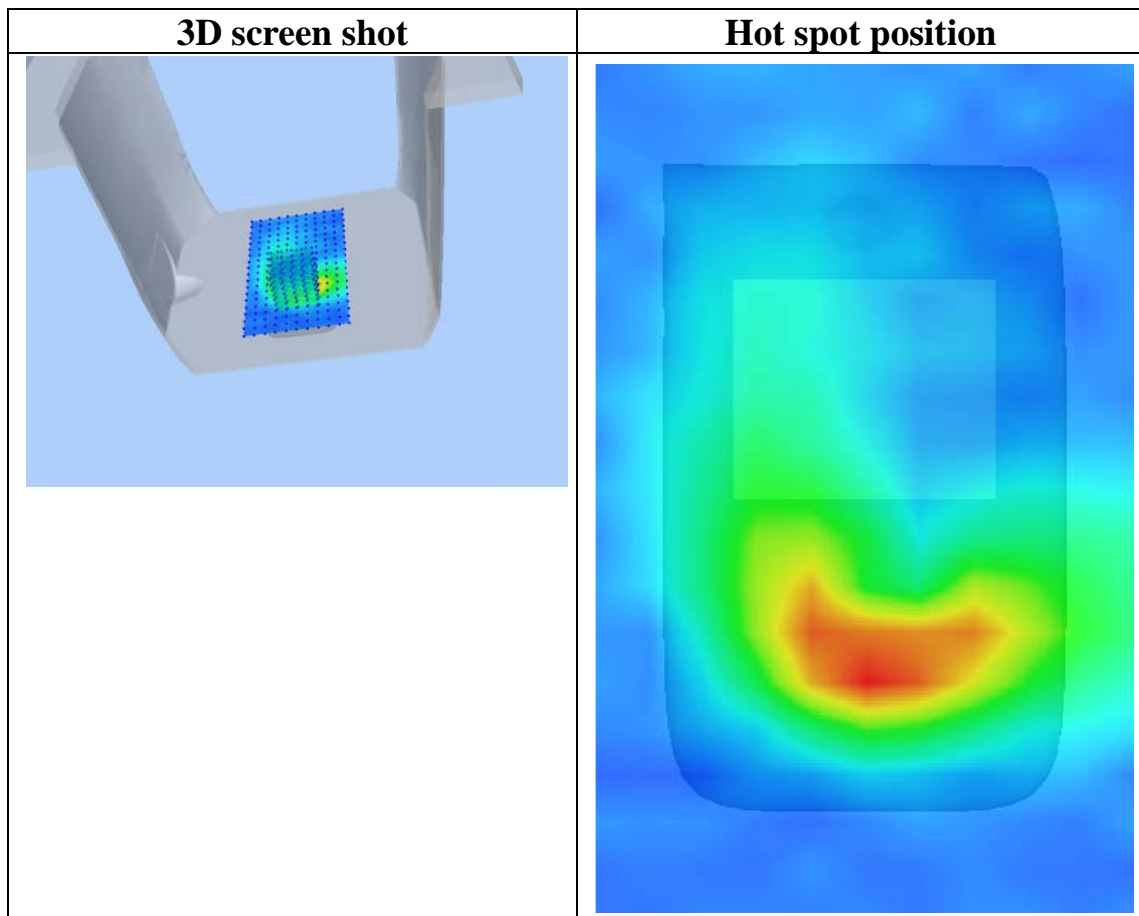
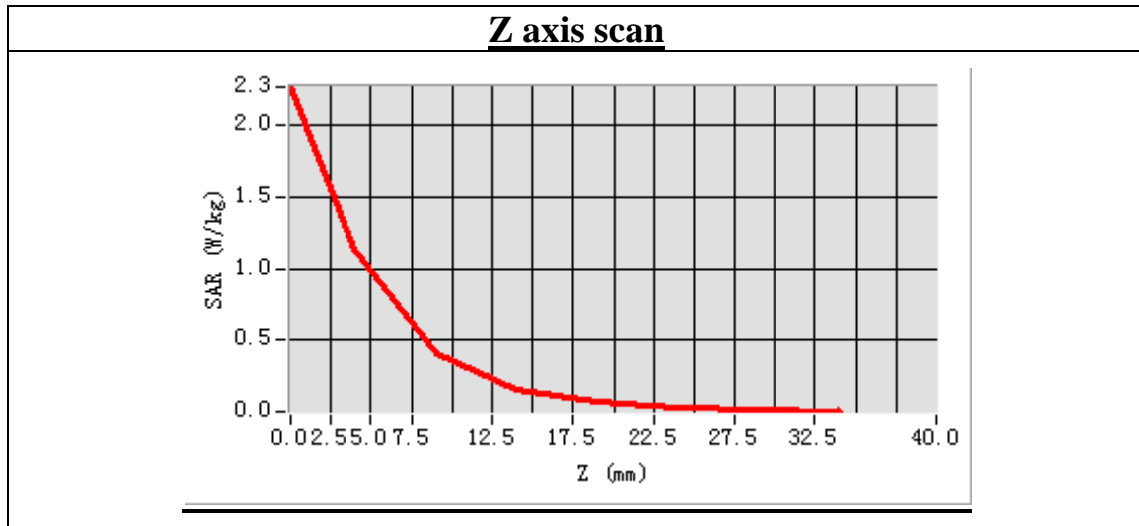


#### VOLUME SAR



Maximum location: X=1.00, Y=-31.00  
 SAR Peak: 2.43 W/kg

SAR 10g (W/Kg)	0.440923
SAR 1g (W/Kg)	1.136000



## MEASUREMENT 4

Type: Phone measurement (Complete)

Area scan resolution: dx=8mm,dy=8mm

Zoom scan resolution: dx=8mm, dy=8mm, dz=5mm

Date of measurement: 2013.9.13

Measurement duration: 9 minutes 33 seconds

### A. Experimental conditions.

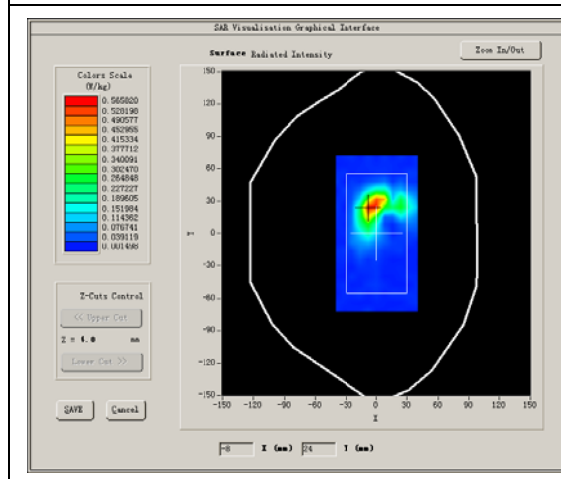
<b>Phantom File</b>	surf_sam_plan.txt
<b>Phantom</b>	Flat Plane
<b>Device Position</b>	Body
<b>Band</b>	802.11B
<b>Channels</b>	High
<b>Signal</b>	Duty Cycle: 1.00

### B. SAR Measurement Results

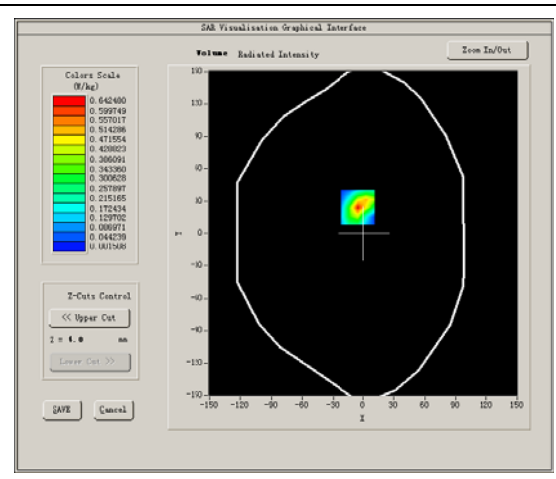
#### Lower band SAR (channel 11):

<b>Frequency (MHz)</b>	2462.000000
<b>Relative permittivity (real part)</b>	52.534839
<b>Conductivity (S/m)</b>	1.901384
<b>Power drift (%)</b>	-3.920000
<b>Ambient Temperature:</b>	22.6°C
<b>Liquid Temperature:</b>	22.3°C
<b>ConvF:</b>	39.772,33.946,37.835
<b>Crest factor:</b>	1:1

#### SURFACE SAR

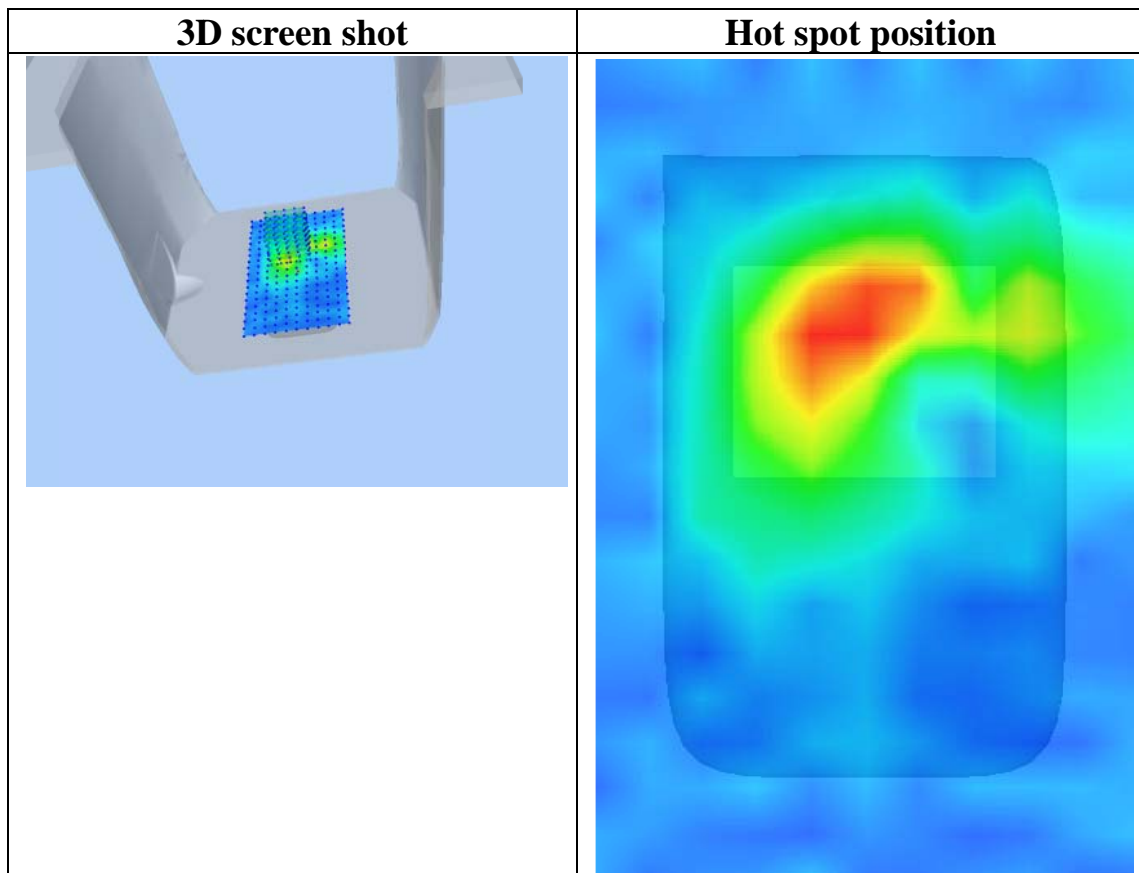
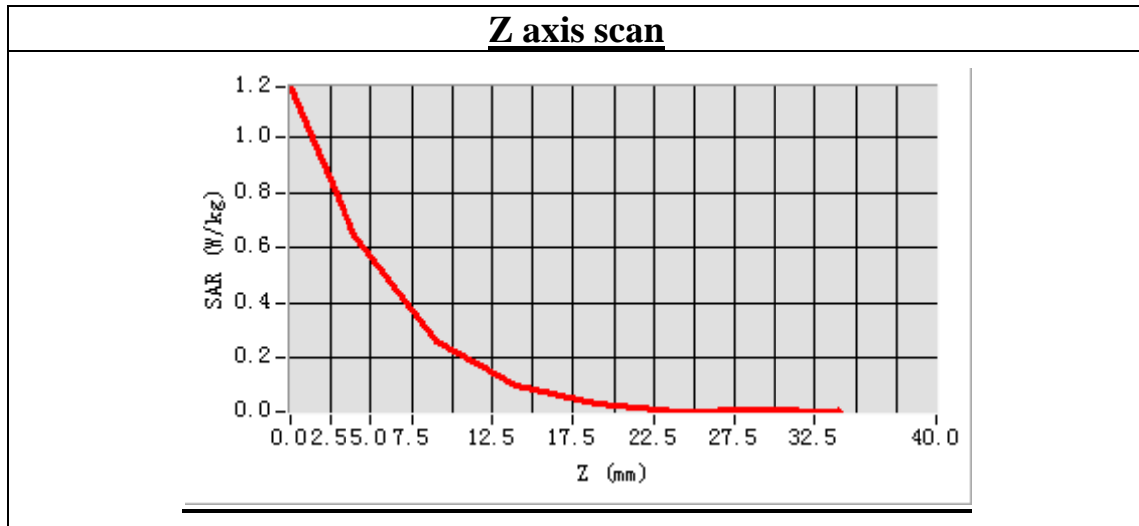


#### VOLUME SAR



**Maximum location: X=-5.00, Y=24.00**  
**SAR Peak: 1.28 W/kg**

<b>SAR 10g (W/Kg)</b>	0.245620
<b>SAR 1g (W/Kg)</b>	0.626216





## MEASUREMENT 5

Type: Phone measurement (Complete)

Area scan resolution: dx=8mm,dy=8mm

Zoom scan resolution: dx=8mm, dy=8mm, dz=5mm

Date of measurement: 2013.9.13

Measurement duration: 9 minutes 33 seconds

### A. Experimental conditions.

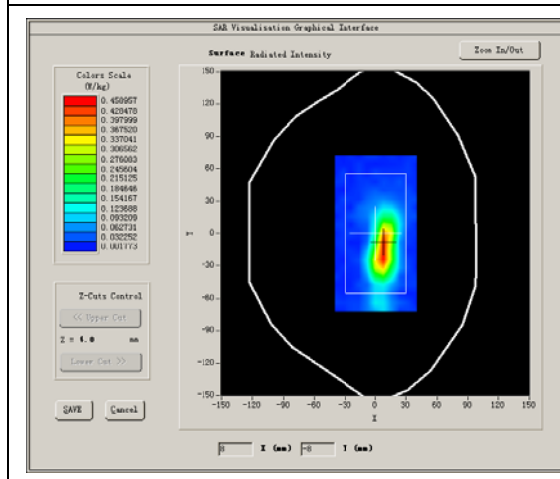
<b>Phantom File</b>	surf_sam_plan.txt
<b>Phantom</b>	Flat Plane
<b>Device Position</b>	Body
<b>Band</b>	802.11B
<b>Channels</b>	High
<b>Signal</b>	Duty Cycle: 1.00

### B. SAR Measurement Results

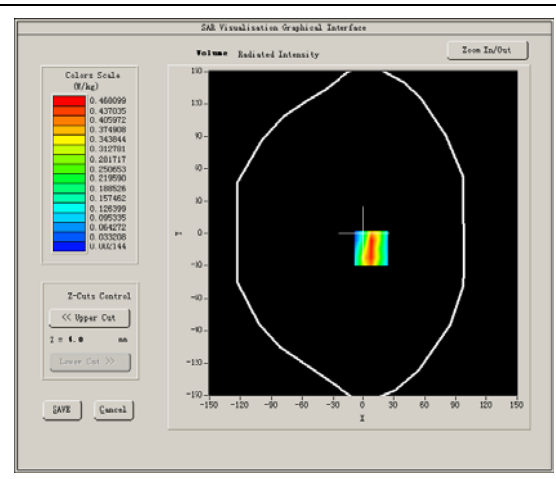
#### Middle band SAR (channel 11):

<b>Frequency (MHz)</b>	2462.000000
<b>Relative permittivity (real part)</b>	52.534839
<b>Conductivity (S/m)</b>	1.901384
<b>Power drift (%)</b>	-3.790000
<b>Ambient Temperature:</b>	22.6°C
<b>Liquid Temperature:</b>	22.3°C
<b>ConvF:</b>	39.772,33.946,37.835
<b>Crest factor:</b>	1:1

#### SURFACE SAR



#### VOLUME SAR

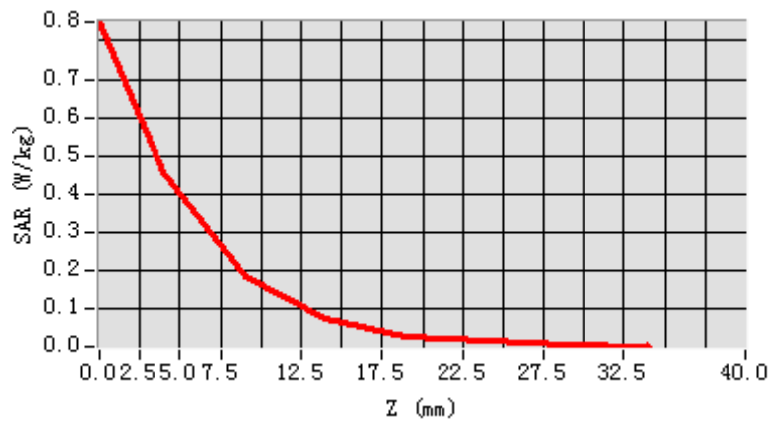


**Maximum location: X=8.00, Y=-14.00**

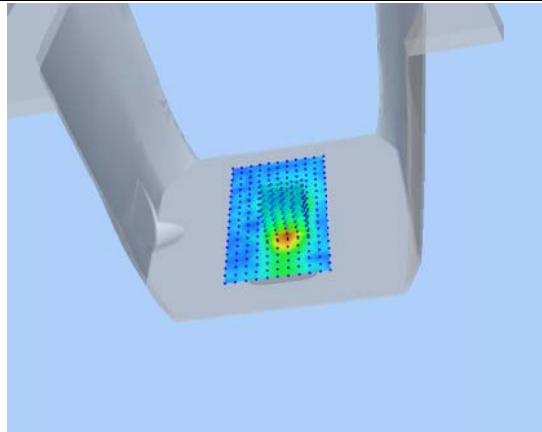
**SAR Peak: 1.01 W/kg**

<b>SAR 10g (W/Kg)</b>	0.200052
<b>SAR 1g (W/Kg)</b>	0.474819

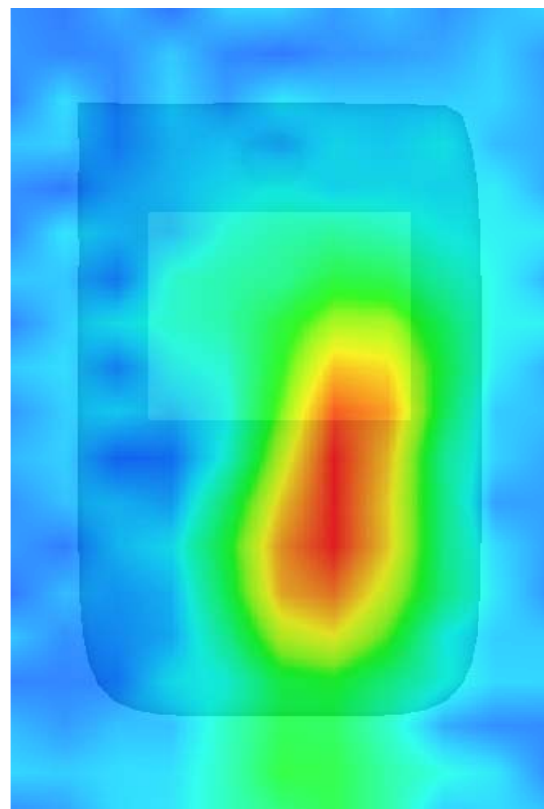
**Z axis scan**



**3D screen shot**



**Hot spot position**



## MEASUREMENT 6

Type: Phone measurement (Complete)

Area scan resolution: dx=8mm,dy=8mm

Zoom scan resolution: dx=8mm, dy=8mm, dz=5mm

Date of measurement: 2013.9.13

Measurement duration: 9 minutes 34 seconds

### A. Experimental conditions.

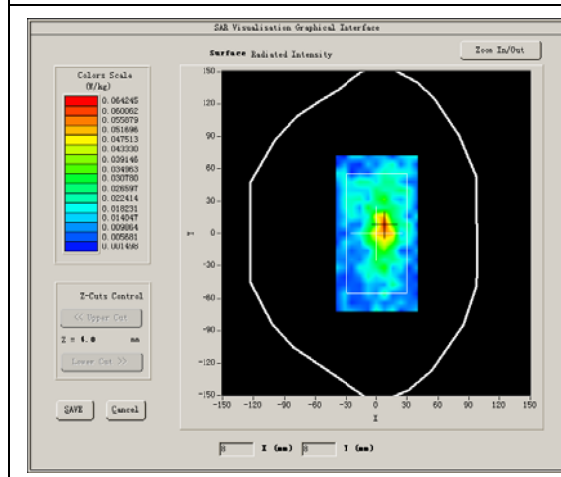
<b>Phantom File</b>	surf_sam_plan.txt
<b>Phantom</b>	Flat Plane
<b>Device Position</b>	Body
<b>Band</b>	802.11B
<b>Channels</b>	High
<b>Signal</b>	Duty Cycle: 1.00

### B. SAR Measurement Results

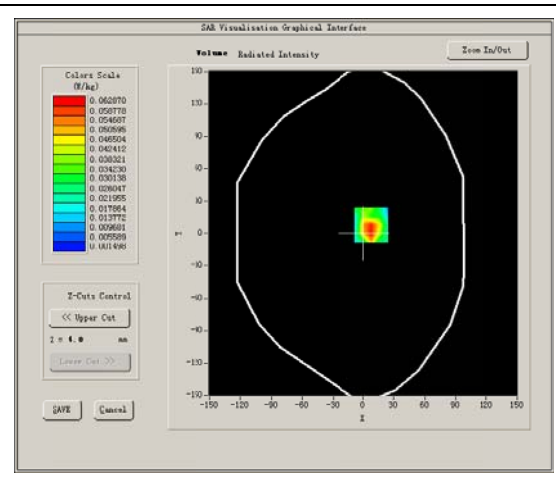
#### Higher band SAR (channel 11):

<b>Frequency (MHz)</b>	2462.000000
<b>Relative permittivity (real part)</b>	52.534839
<b>Conductivity (S/m)</b>	1.901384
<b>Power drift (%)</b>	-2.100000
<b>Ambient Temperature:</b>	22.6°C
<b>Liquid Temperature:</b>	22.3°C
<b>ConvF:</b>	39.772,33.946,37.835
<b>Crest factor:</b>	1:1

#### SURFACE SAR

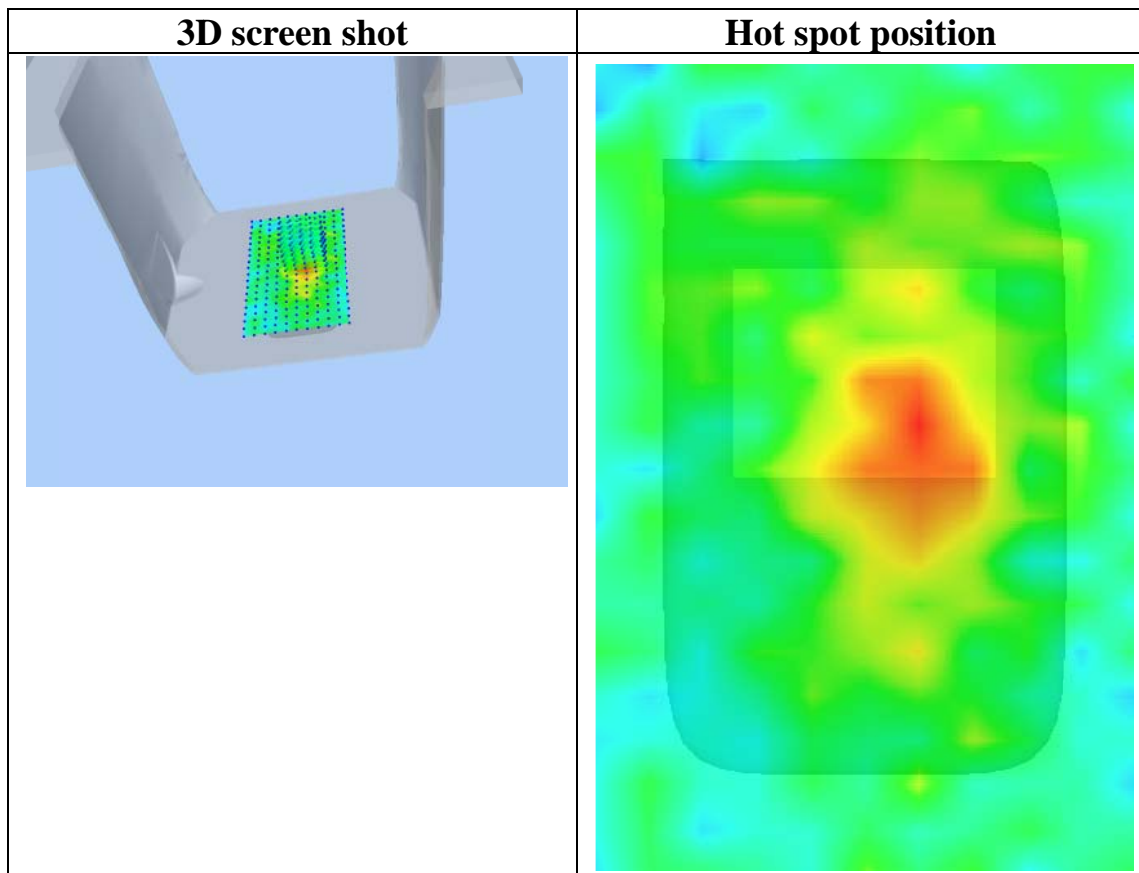
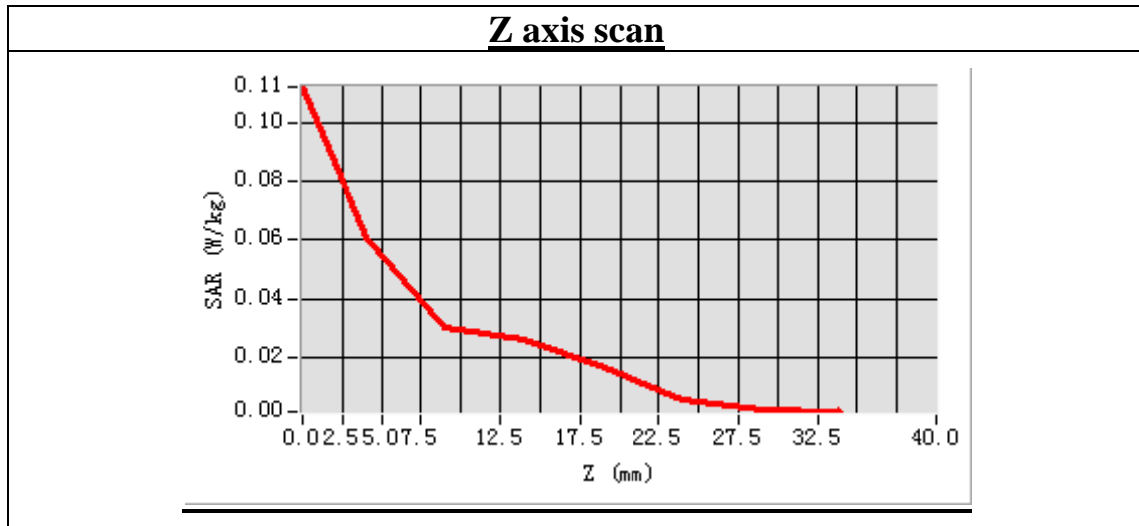


#### VOLUME SAR



Maximum location: X=8.00, Y=8.00  
 SAR Peak: 0.15 W/kg

SAR 10g (W/Kg)	0.031246
SAR 1g (W/Kg)	0.073051



## System Performance Check Data(Body)

Type: Phone measurement (Complete)

Area scan resolution: dx=8mm,dy=8mm

Zoom scan resolution: dx=8mm, dy=8mm, dz=5mm

Date of measurement: 2013.9.13

Measurement duration: 13 minutes 27 seconds

### A. Experimental conditions.

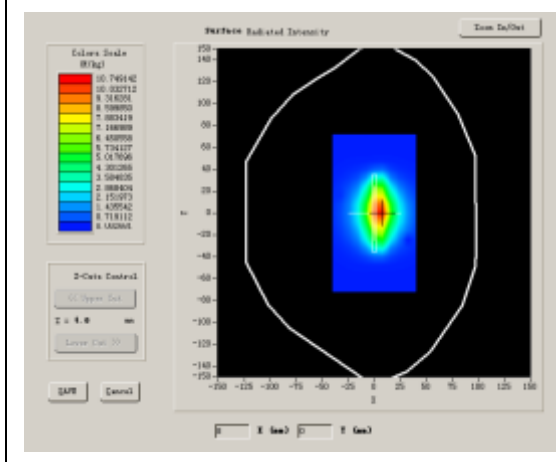
<b>Phantom File</b>	surf_sam_plan.txt
<b>Phantom</b>	Flat Plane
<b>Device Position</b>	
<b>Band</b>	2450MHz
<b>Channels</b>	
<b>Signal</b>	CW

### B. SAR Measurement Results

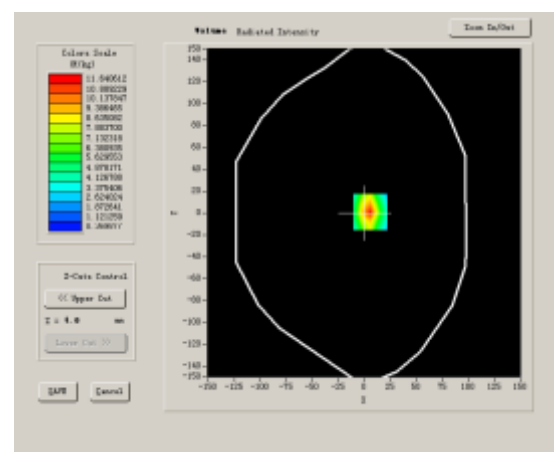
#### Band SAR

<b>Frequency (MHz)</b>	2450.000000
<b>Relative permittivity (real part)</b>	52.534839
<b>Conductivity (S/m)</b>	1.901384
<b>Power Drift (%)</b>	-0.640000
<b>Ambient Temperature:</b>	22.0°C
<b>Liquid Temperature:</b>	21.8°C
<b>ConvF:</b>	39.772,33.946,37.835
<b>Crest factor:</b>	1:1

#### SURFACE SAR



#### VOLUME SAR



**Maximum location: X=-1.00, Y=-50.00**

<b>SAR 10g (W/Kg)</b>	6.164792
<b>SAR 1g (W/Kg)</b>	12.842315

**Z Axis Scan**

<b>Z (mm)</b>	<b>0.00</b>	<b>4.00</b>	<b>9.00</b>	<b>14.00</b>	<b>19.00</b>
<b>SAR (W/Kg)</b>	<b>0.0000</b>	<b>13.1279</b>	<b>6.8312</b>	<b>3.5991</b>	<b>1.3473</b>

