



System Performance Check Data(Body)

Type: Phone measurement (Complete)

Area scan resolution: dx=8mm,dy=8mm

Zoom scan resolution: dx=8mm, dy=8mm, dz=5mm

Date of measurement: 2013.7.8

Measurement duration: 13 minutes 27 seconds

A. Experimental conditions.

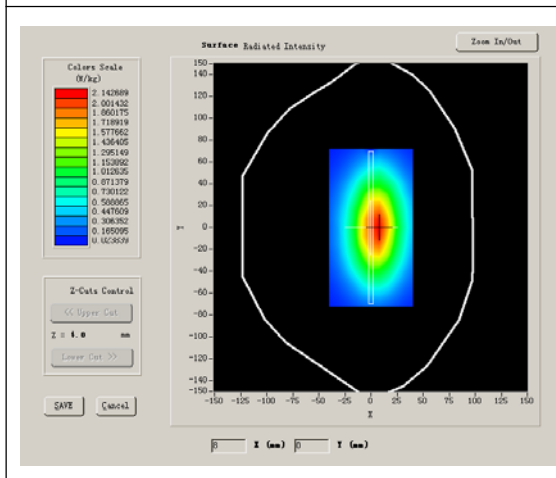
Phantom File	surf_sam_plan.txt
Phantom	Flat Plane
Device Position	
Band	750MHz
Channels	
Signal	CW

B. SAR Measurement Results

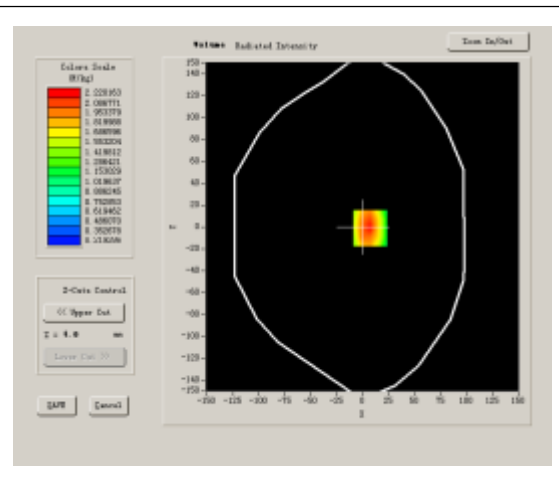
Band SAR

Frequency (MHz)	750.000000
Relative permittivity (real part)	54.610000
Conductivity (S/m)	0.970000
Power drift (%)	-0.310000
Ambient Temperature:	22.9°C
Liquid Temperature:	22.1°C
ConvF:	27.632,26.015,26.912
Crest factor:	1:1

SURFACE SAR



VOLUME SAR



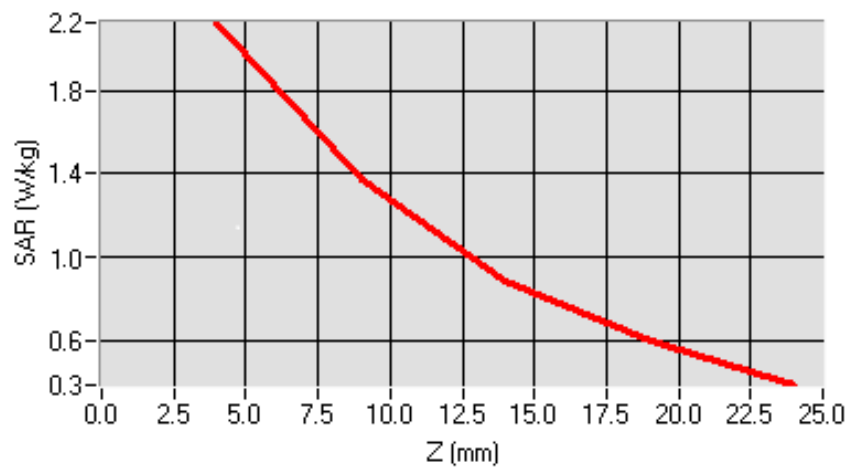
Maximum location: X=6.00, Y=-6.00

SAR 10g (W/Kg)	1.439476
SAR 1g (W/Kg)	2.206832

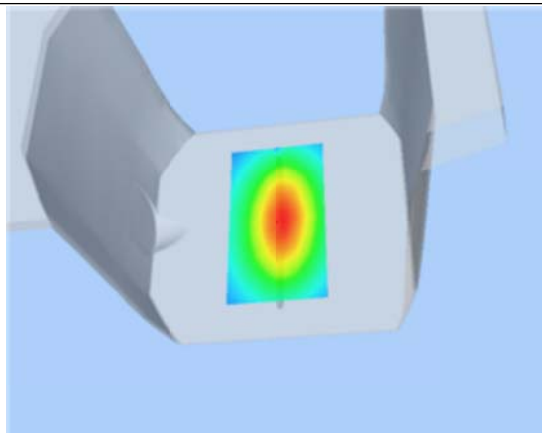
Z Axis Scan

Z (mm)	0.00	4.00	9.00	14.00	19.00	24.00	29.00
SAR (W/Kg)	0.0000	2.2218	1.1735	0.8031	0.6403	0.4089	0.2910

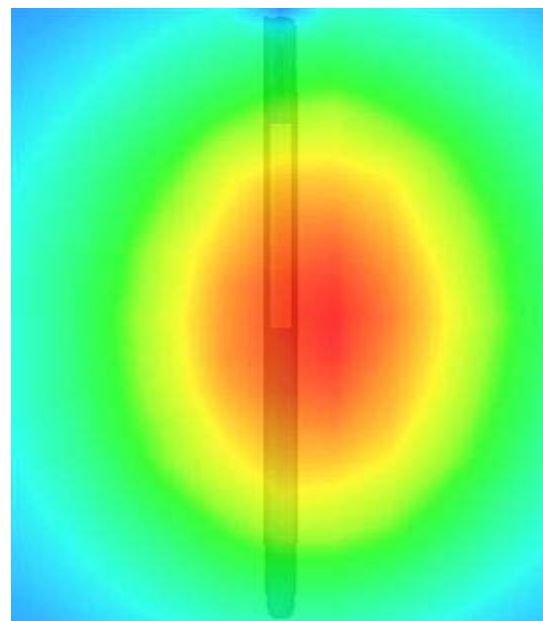
SAR, Z Axis Scan (X = 6, Y = -6)



3D scene shot



Hot spot position



System Performance Check Data(Body)

Type: Phone measurement (Complete)

Area scan resolution: dx=8mm,dy=8mm

Zoom scan resolution: dx=8mm, dy=8mm, dz=5mm

Date of measurement: 2013.7.9

Measurement duration: 13 minutes 27 seconds

A. Experimental conditions.

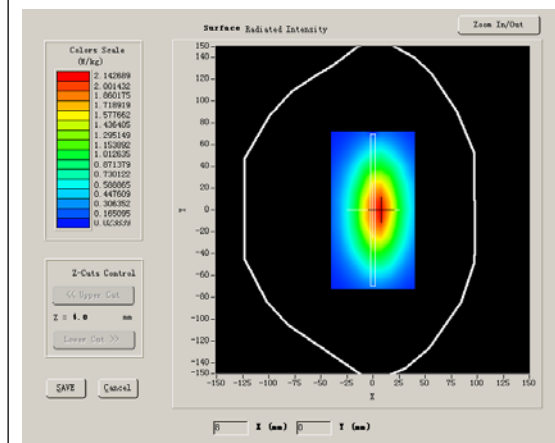
Phantom File	surf_sam_plan.txt
Phantom	Flat Plane
Device Position	
Band	835MHz
Channels	
Signal	CW

B. SAR Measurement Results

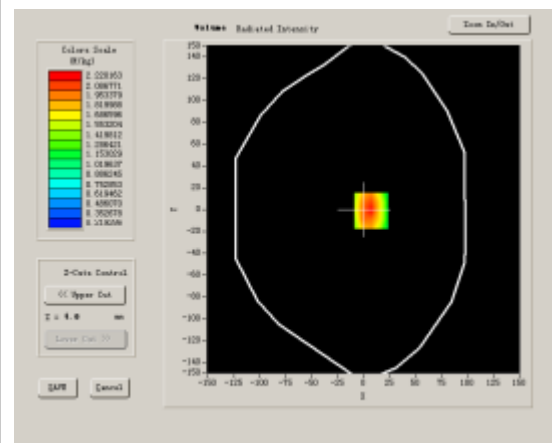
Band SAR

Frequency (MHz)	835.000000
Relative permittivity (real part)	56.120982
Conductivity (S/m)	0.960921
Power drift (%)	-1.700000
Ambient Temperature:	22.9°C
Liquid Temperature:	22.1°C
ConvF:	28.559,25.681,27.588
Crest factor:	1:1

SURFACE SAR



VOLUME SAR



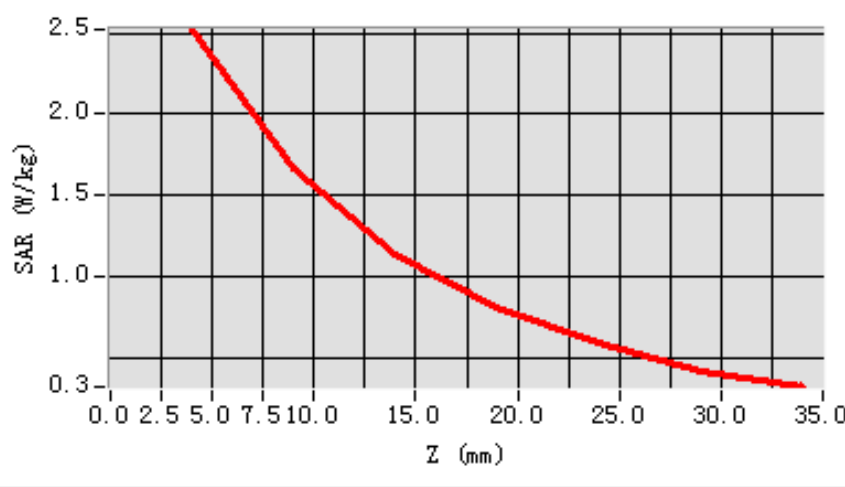
Maximum location: X=7.00, Y=-1.00

SAR 10g (W/Kg)	1.497122
SAR 1g (W/Kg)	2.361423

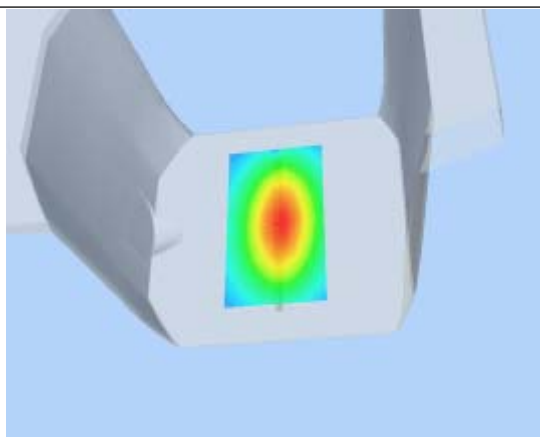
Z Axis Scan

Z (mm)	0.00	4.00	9.00	14.00	19.00	24.00	29.00
SAR (W/Kg)	0.0000	2.5209	1.6629	1.1437	0.8075	0.5889	0.4143

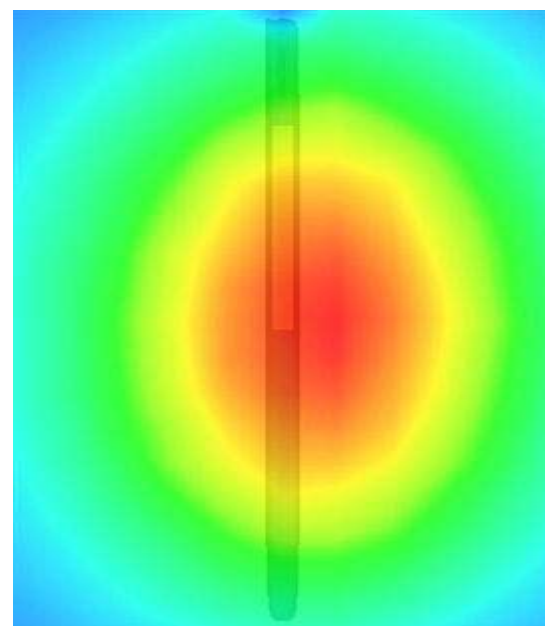
SAR, Z Axis Scan (X = 7, Y = -1)



3D scen shot



Hot spot position



System Performance Check Data(Body)

Type: Phone measurement (Complete)

Area scan resolution: dx=8mm,dy=8mm

Zoom scan resolution: dx=8mm, dy=8mm, dz=5mm

Date of measurement: 2013.7.10

Measurement duration: 13 minutes 26 seconds

A. Experimental conditions.

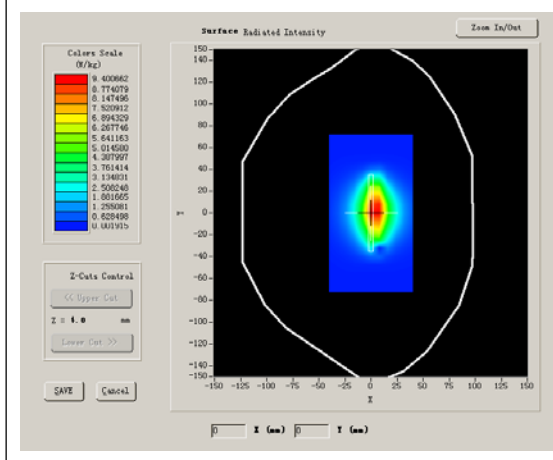
Phantom File	surf_sam_plan.txt
Phantom	Flat Plane
Device Position	
Band	1750MHz
Channels	
Signal	CW

B. SAR Measurement Results

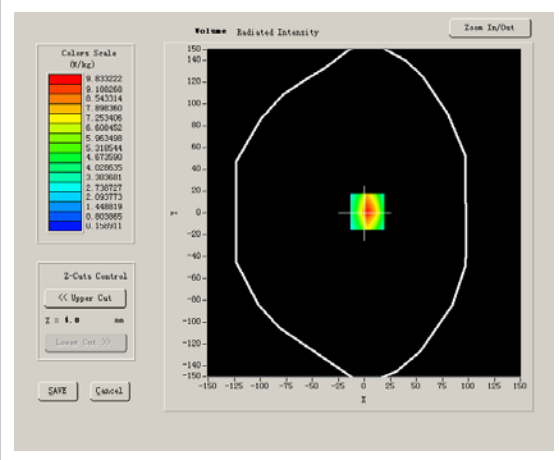
Band SAR

Frequency (MHz)	1750.000000
Relative permittivity (real part)	53.510000
Conductivity (S/m)	1.470000
Power drift (%)	-0.710000
Ambient Temperature:	22.3°C
Liquid Temperature:	22.6°C
ConvF:	42.982, 37.514, 41.835
Crest factor:	1:1

SURFACE SAR



VOLUME SAR



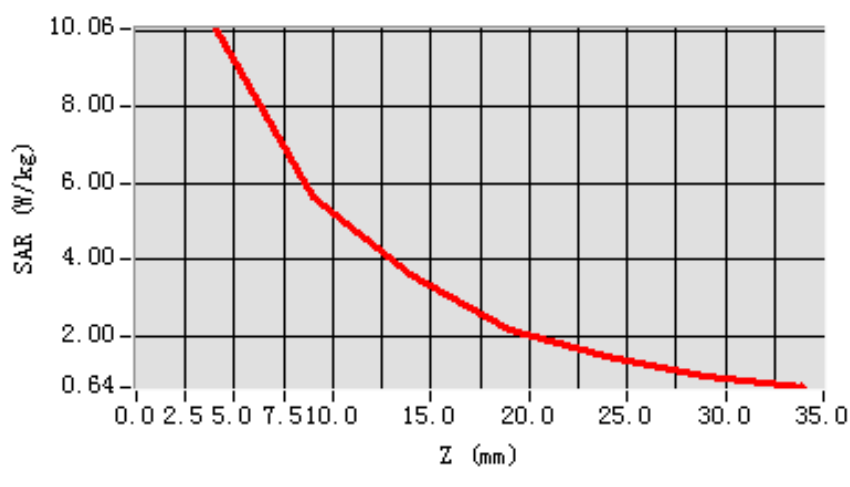
Maximum location: X=3.00, Y=1.00

SAR 10g (W/Kg)	4.981611
SAR 1g (W/Kg)	9.340177

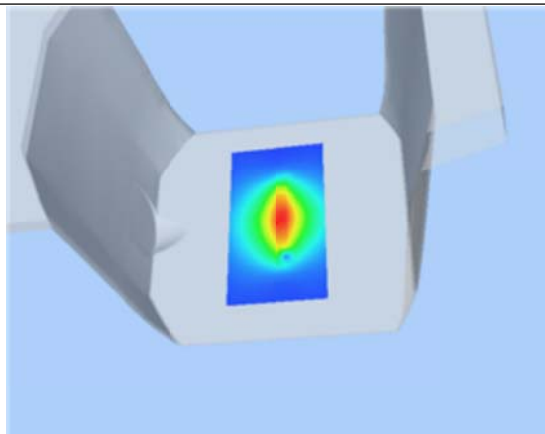
Z Axis Scan

Z (mm)	0.00	4.00	9.00	14.00	19.00	24.00	29.00
SAR (W/Kg)	0.0000	10.0621	5.6445	3.6226	2.1642	1.4521	0.9078

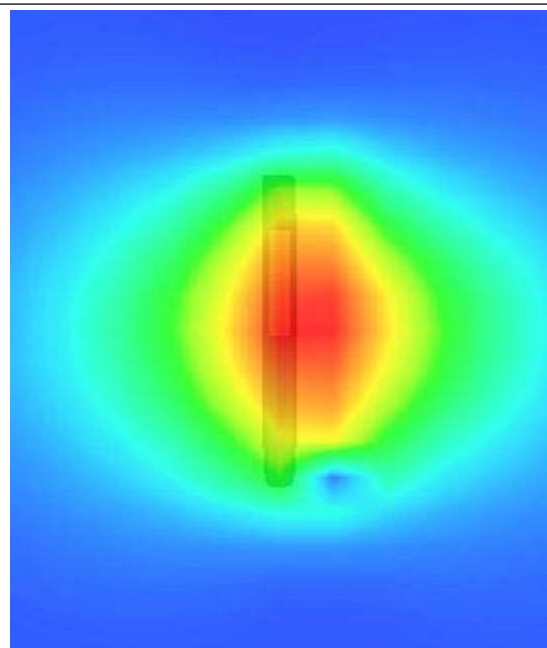
SAR, Z Axis Scan (X = 3, Y = 1)



3D scen shot



Hot spot position



System Performance Check Data(Body)

Type: Phone measurement (Complete)

Area scan resolution: dx=8mm,dy=8mm

Zoom scan resolution: dx=8mm, dy=8mm, dz=5mm

Date of measurement: 2013.7.11

Measurement duration: 13 minutes 26 seconds

A. Experimental conditions.

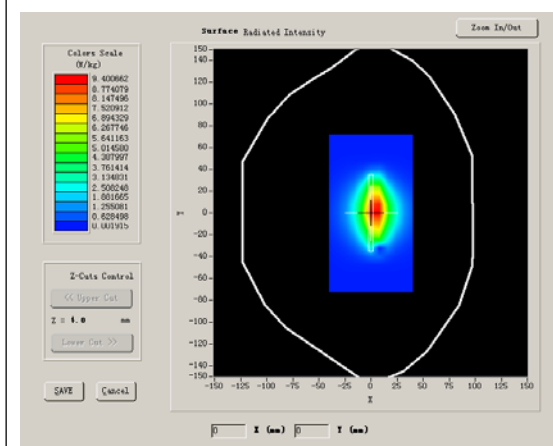
Phantom File	surf_sam_plan.txt
Phantom	Flat Plane
Device Position	
Band	1900MHz
Channels	
Signal	CW

B. SAR Measurement Results

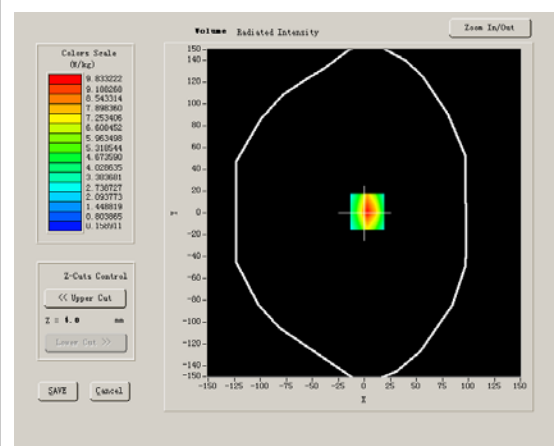
Band SAR

Frequency (MHz)	1900.000000
Relative permittivity (real part)	52.145621
Conductivity (S/m)	1.492018
Power drift (%)	-0.030000
Ambient Temperature:	23.2°C
Liquid Temperature:	22.6°C
ConvF:	40.625,34.773,38.535
Crest factor:	1:1

SURFACE SAR



VOLUME SAR



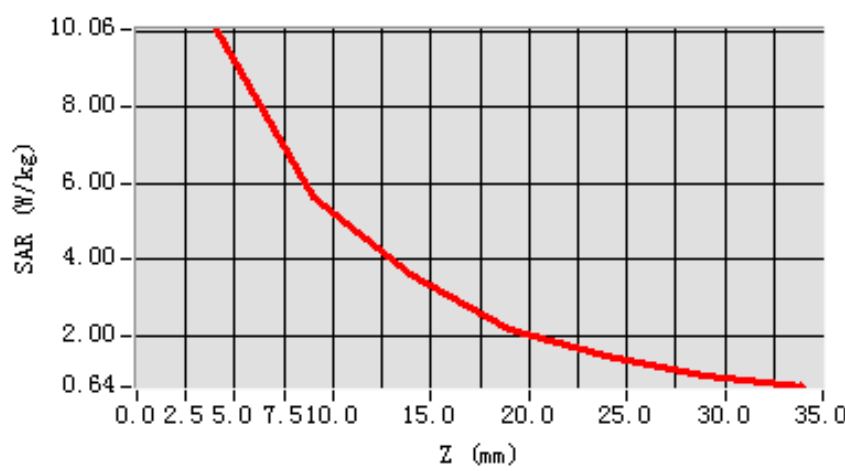
Maximum location: X=3.00, Y=1.00

SAR 10g (W/Kg)	4.981611
SAR 1g (W/Kg)	9.736177

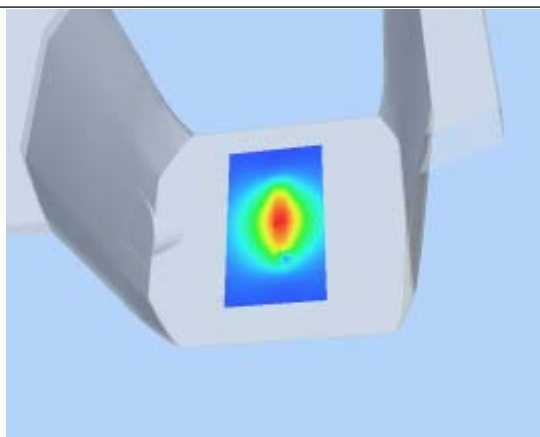
Z Axis Scan

Z (mm)	0.00	4.00	9.00	14.00	19.00	24.00	29.00
SAR (W/Kg)	0.0000	10.0621	5.6445	3.6226	2.1642	1.4521	0.9078

SAR, Z Axis Scan (X = 3, Y = 1)



3D scen shot



Hot spot position

