

Annex B Graph Test Results



BAND	<u>PARAMETERS</u>
<u>GSM850</u>	<p><u>Measurement 1:</u> Flat Plane with EUT on Middle Channel in GPRS mode Horizontal-Up</p> <p><u>Measurement 2:</u> Flat Plane with EUT on Middle Channel in GPRS mode Horizontal-Down</p> <p><u>Measurement 3:</u> Flat Plane with EUT on Middle Channel in GPRS mode Vertical-Front</p> <p><u>Measurement 4:</u> Flat Plane with EUT on Middle Channel in GPRS mode Vertical-Back</p> <p><u>Measurement 5:</u> Flat Plane with EUT on Middle Channel in GPRS mode Dongle-Tip</p> <p><u>Measurement 6:</u> Flat Plane with EUT on Middle Channel in EDGE mode Horizontal-Up</p>
<u>GSM1900</u>	<p><u>Measurement 7:</u> Flat Plane with EUT on Low Channel in GPRS mode Horizontal-Up</p> <p><u>Measurement 8:</u> Flat Plane with EUT on Low Channel in GPRS mode Horizontal-Down</p> <p><u>Measurement 9:</u> Flat Plane with EUT on Low Channel in GPRS mode Vertical-Front</p> <p><u>Measurement 10:</u> Flat Plane with EUT on Low Channel in GPRS mode Vertical-Back</p> <p><u>Measurement 11:</u> Flat Plane with EUT on Low Channel in GPRS mode Dongle-Tip</p> <p><u>Measurement 12:</u> Flat Plane with EUT on Low Channel in EDGE mode Horizontal-Up</p>
<u>WCDMA 850</u>	<p><u>Measurement 13:</u> Flat Plane with EUT on Middle Channel in WCDMA mode Horizontal-Up</p> <p><u>Measurement 14:</u> Flat Plane with EUT on Middle Channel in WCDMA mode Horizontal-Down</p> <p><u>Measurement 15:</u> Flat Plane with EUT on Middle Channel in WCDMA mode Vertical-Front</p> <p><u>Measurement 16:</u> Flat Plane with EUT on Middle Channel in WCDMA mode Vertical-Back</p> <p><u>Measurement 17:</u> Flat Plane with EUT on Middle Channel in WCDMA mode Dongle-Tip</p>
<u>WCDMA 1700</u>	<p><u>Measurement 18:</u> Flat Plane with EUT on Low Channel in WCDMA mode Horizontal-Up</p> <p><u>Measurement 19:</u> Flat Plane with EUT on Low Channel in WCDMA mode Horizontal-Down</p>

	<p><u>Measurement 20:</u> Flat Plane with EUT on Low Channel in WCDMA mode Vertical-Front</p> <p><u>Measurement 21:</u> Flat Plane with EUT on Low Channel in WCDMA mode Vertical-Back</p> <p><u>Measurement 22:</u> Flat Plane with EUT on Low Channel in WCDMA mode Dongle-Tip</p>
<p><u>WCDMA</u> <u>1900</u></p>	<p><u>Measurement 23:</u> Flat Plane with EUT on Low Channel in WCDMA mode Horizontal-Up</p> <p><u>Measurement 24:</u> Flat Plane with EUT on Low Channel in WCDMA mode Horizontal-Down</p> <p><u>Measurement 25:</u> Flat Plane with EUT on Middle Channel in WCDMA mode Horizontal-Down</p> <p><u>Measurement 26:</u> Flat Plane with EUT on High Channel in WCDMA mode Horizontal-Down</p> <p><u>Measurement 27:</u> Flat Plane with EUT on Low Channel in WCDMA mode Vertical-Front</p> <p><u>Measurement 28:</u> Flat Plane with EUT on Low Channel in WCDMA mode Vertical-Back</p> <p><u>Measurement 29:</u> Flat Plane with EUT on Low Channel in WCDMA mode Dongle-Tip</p>
<p><u>WiFi</u> <u>2450-b</u></p>	<p><u>Measurement 30:</u> Flat Plane with EUT on High Channel in DSSS mode Horizontal-Up</p> <p><u>Measurement 31:</u> Flat Plane with EUT on High Channel in DSSS mode Horizontal-Down</p> <p><u>Measurement 32:</u> Flat Plane with EUT on High Channel in DSSS mode Vertical-Front</p> <p><u>Measurement 33:</u> Flat Plane with EUT on High Channel in DSSS mode Vertical-Back</p> <p><u>Measurement 34:</u> Flat Plane with EUT on High Channel in DSSS mode Dongle-Tip</p>

MEASUREMENT 1

Type: Phone measurement (Complete)

Area scan resolution: dx=8mm,dy=8mm

Zoom scan resolution: dx=5mm, dy=5mm, dz=5mm

Date of measurement: 2013.7.9

Measurement duration: 12 minutes 9 seconds

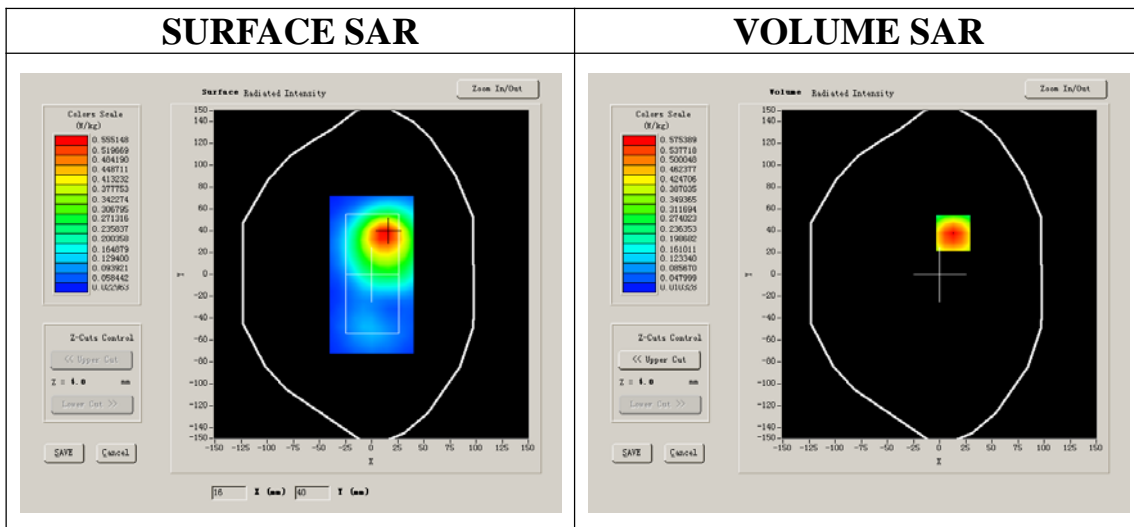
A. Experimental conditions.

Phantom File	surf_sam_plan.txt
Phantom	Flat Plane
Device Position	Body
Band	GSM850
Channels	Middle
Signal	GPRS

B. SAR Measurement Results

Middle Band SAR (Channel 190):

Frequency (MHz)	836.600000
Relative permittivity (real part)	55.140000
Conductivity (S/m)	0.960000
Power drift (%)	-0.870000
Ambient Temperature:	23.2°C
Liquid Temperature:	22.9°C
ConvF:	28.479,25.214,27.196
Crest factor:	1:2



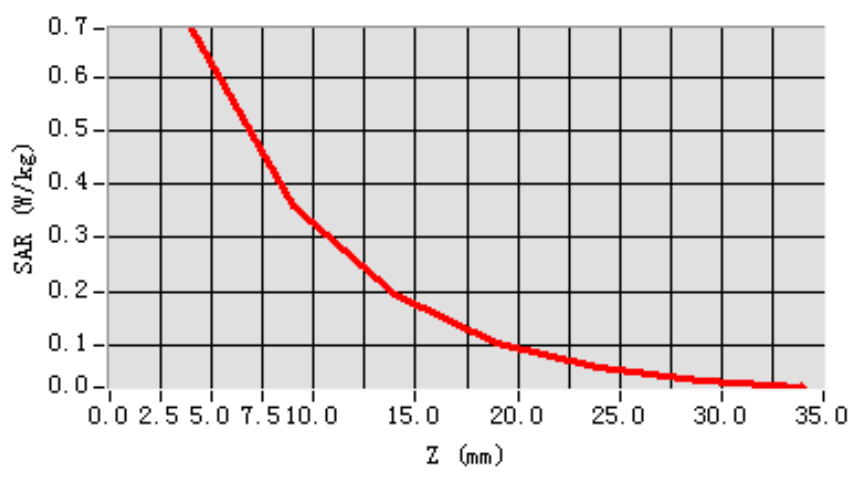
Maximum location: X=13.00, Y=38.00

SAR 10g (W/Kg)	0.363490
SAR 1g (W/Kg)	0.660962

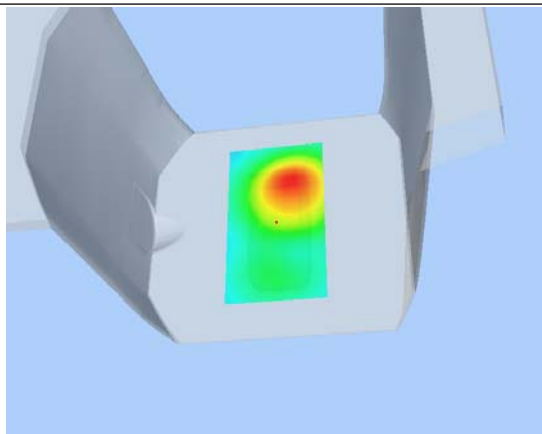
Z Axis Scan

Z (mm)	0.00	4.00	9.00	14.00	19.00	24.00	29.00
SAR (W/Kg)	0.0000	0.6905	0.3583	0.1961	0.1031	0.0588	0.0336

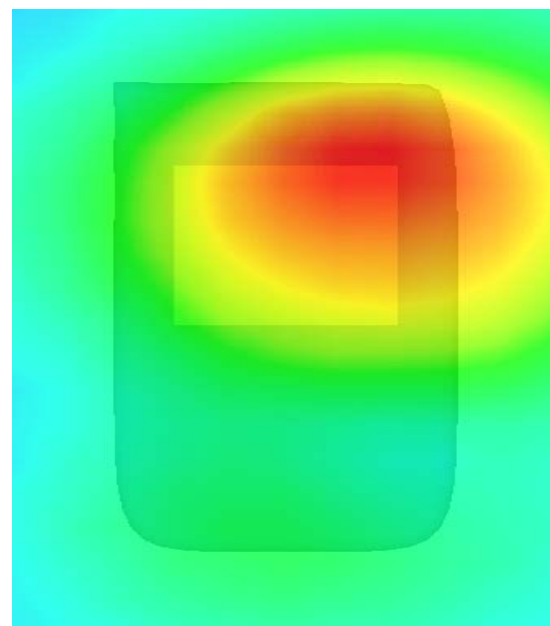
SAR, Z Axis Scan (X = 13, Y = 38)



3D scen shot



Hot spot position



MEASUREMENT 2

Type: Phone measurement (Complete)

Area scan resolution: dx=8mm,dy=8mm

Zoom scan resolution: dx=5mm, dy=5mm, dz=5mm

Date of measurement: 2013.7.9

Measurement duration: 13 minutes 10 seconds

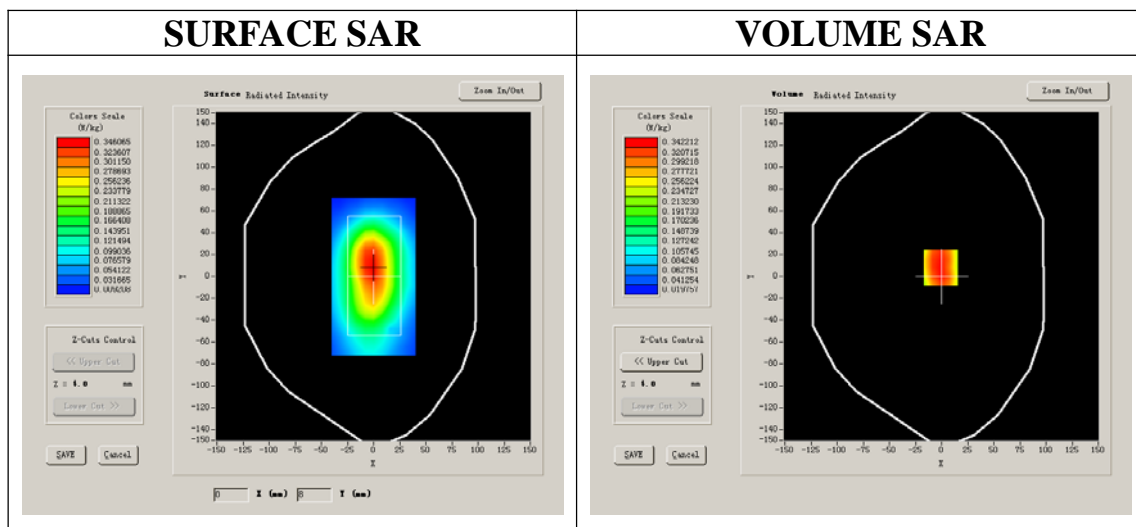
A. Experimental conditions.

Phantom File	surf_sam_plan.txt
Phantom	Flat Plane
Device Position	Body
Band	GSM850
Channels	Middle
Signal	GPRS

B. SAR Measurement Results

Middle Band SAR (Channel 190):

Frequency (MHz)	836.600000
Relative permittivity (real part)	55.140000
Conductivity (S/m)	0.960000
Power drift (%)	-1.720000
Ambient Temperature:	23.2°C
Liquid Temperature:	22.9°C
ConvF:	28.479,25.214,27.196
Crest factor:	1:2



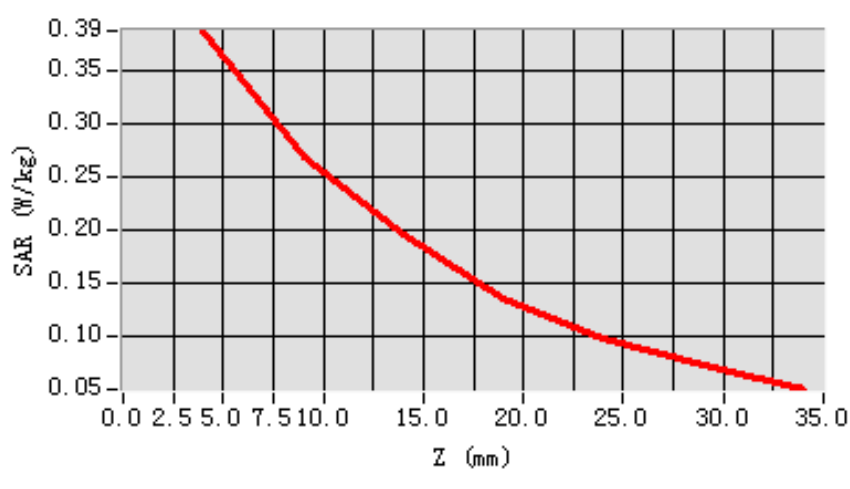
Maximum location: X=-1.00, Y=8.00

SAR 10g (W/Kg)	0.254937
SAR 1g (W/Kg)	0.373026

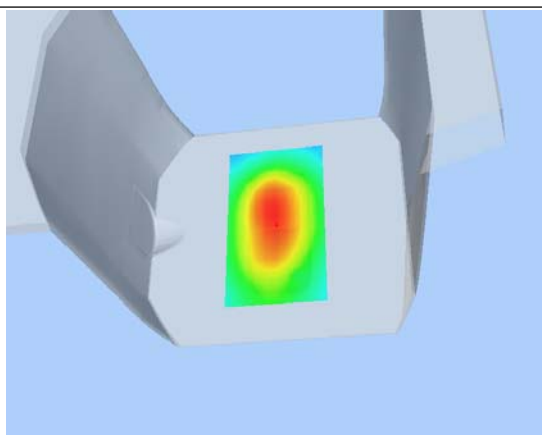
Z Axis Scan

Z (mm)	0.00	4.00	9.00	14.00	19.00	24.00	29.00
SAR (W/Kg)	0.0000	0.3886	0.2684	0.1964	0.1362	0.0977	0.0731

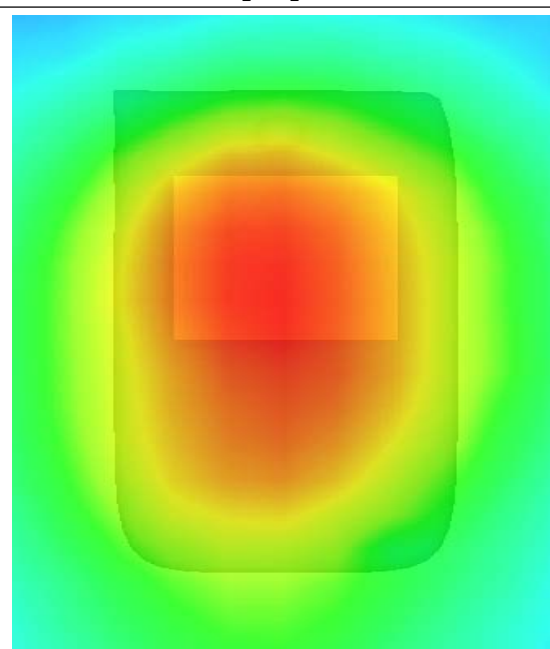
SAR, Z Axis Scan (X = -1, Y = 8)



3D scen shot



Hot spot position



MEASUREMENT 3

Type: Phone measurement (Complete)

Area scan resolution: dx=8mm,dy=8mm

Zoom scan resolution: dx=5mm, dy=5mm, dz=5mm

Date of measurement: 2013.7.9

Measurement duration: 13 minutes 9 seconds

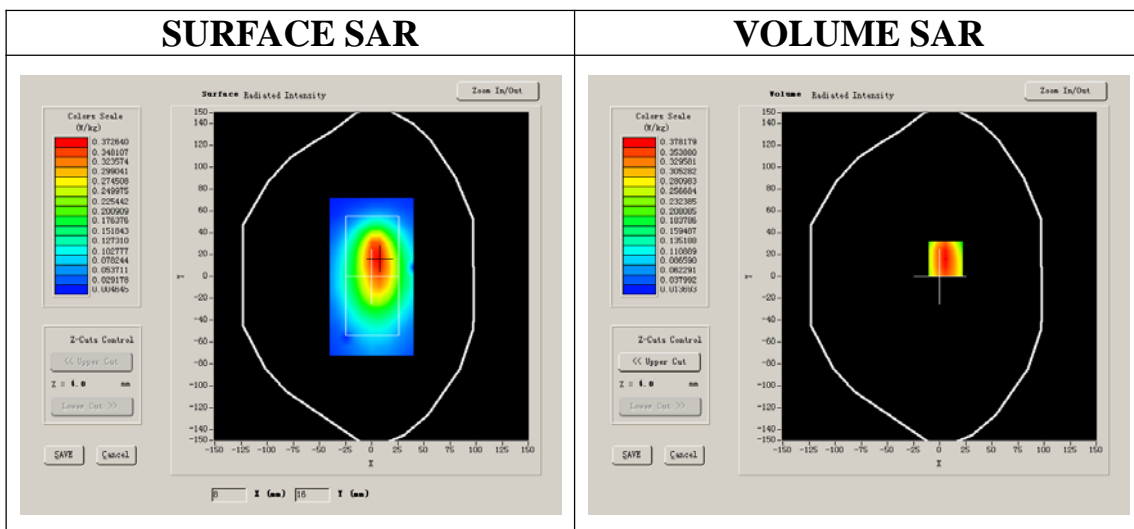
A. Experimental conditions.

Phantom File	surf_sam_plan.txt
Phantom	Flat Plane
Device Position	Body
Band	GSM850
Channels	Middle
Signal	GPRS

B. SAR Measurement Results

Middle Band SAR (Channel 190):

Frequency (MHz)	836.600000
Relative permittivity (real part)	55.140000
Conductivity (S/m)	0.960000
Power drift (%)	-1.000000
Ambient Temperature:	23.2°C
Liquid Temperature:	22.9°C
ConvF:	28.479,25.214,27.196
Crest factor:	1:2



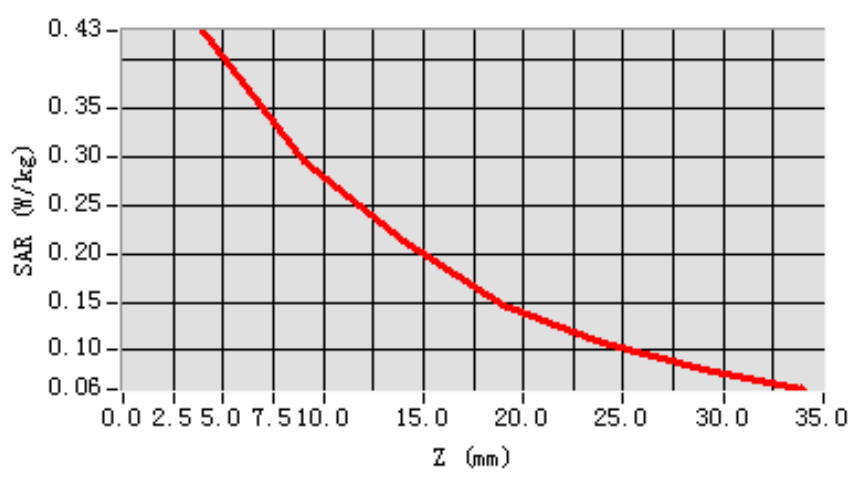
Maximum location: X=6.00, Y=16.00

SAR 10g (W/Kg)	0.275063
SAR 1g (W/Kg)	0.408579

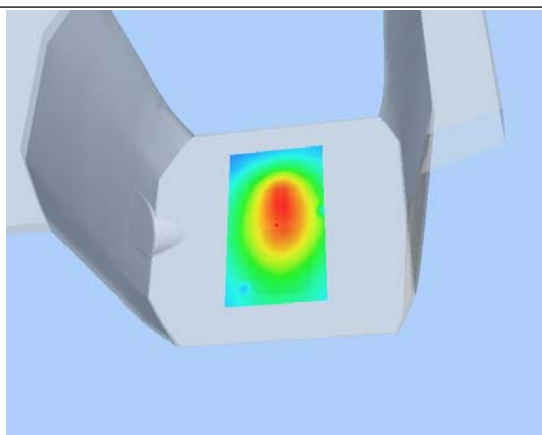
Z Axis Scan

Z (mm)	0.00	4.00	9.00	14.00	19.00	24.00	29.00
SAR (W/Kg)	0.0000	0.4294	0.2939	0.2132	0.1476	0.1078	0.0797

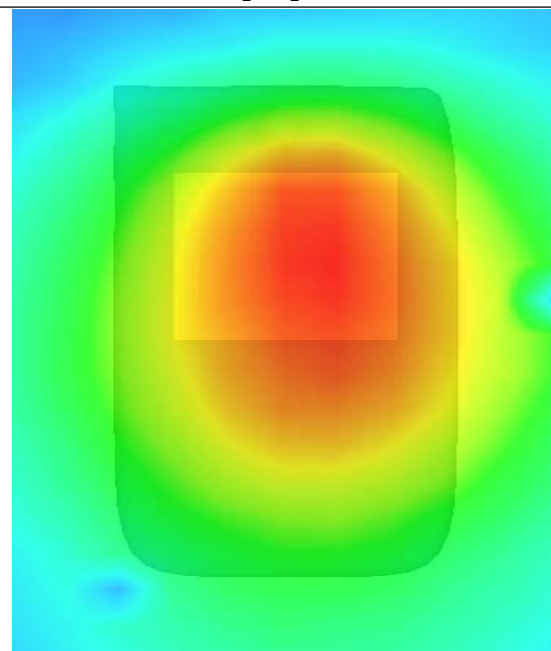
SAR, Z Axis Scan (X = 6, Y = 16)



3D scen shot



Hot spot position



MEASUREMENT 4

Type: Phone measurement (Complete)

Area scan resolution: dx=8mm,dy=8mm

Zoom scan resolution: dx=5mm, dy=5mm, dz=5mm

Date of measurement: 2013.7.9

Measurement duration: 13 minutes 9 seconds

A. Experimental conditions.

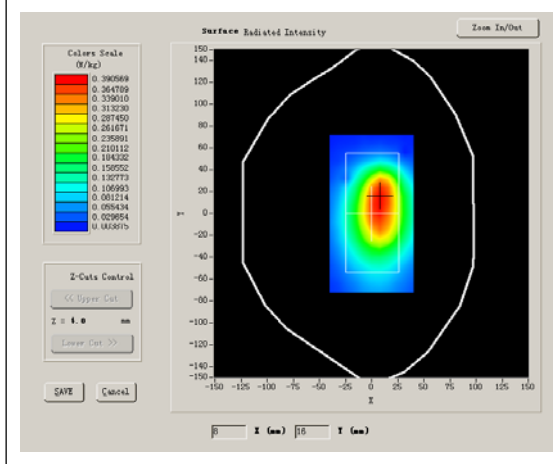
Phantom File	surf_sam_plan.txt
Phantom	Flat Plane
Device Position	Body
Band	GSM850
Channels	Middle
Signal	GPRS

B. SAR Measurement Results

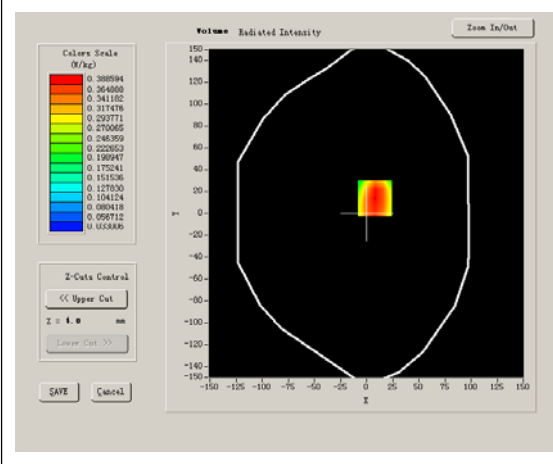
Middle Band SAR (Channel 190):

Frequency (MHz)	836.600000
Relative permittivity (real part)	55.140000
Conductivity (S/m)	0.960000
Power drift (%)	-0.460000
Ambient Temperature:	23.2°C
Liquid Temperature:	22.9°C
ConvF:	28.479,25.214,27.196
Crest factor:	1:2

SURFACE SAR



VOLUME SAR



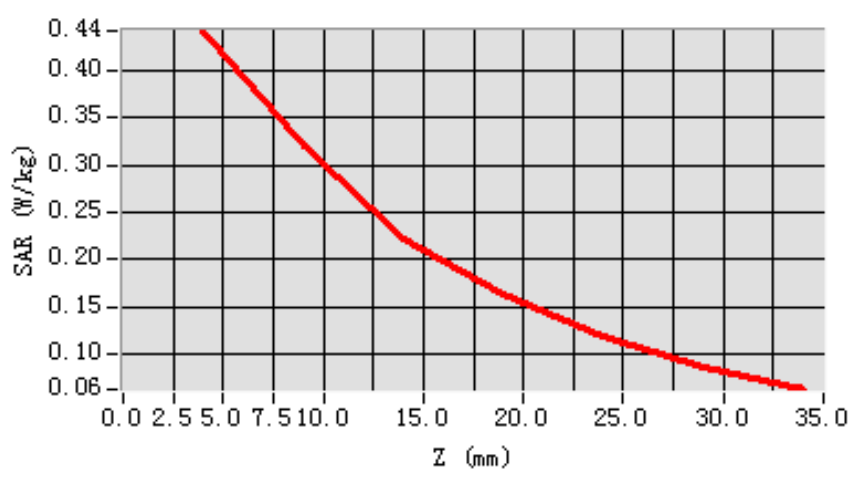
Maximum location: X=8.00, Y=14.00

SAR 10g (W/Kg)	0.291543
SAR 1g (W/Kg)	0.427880

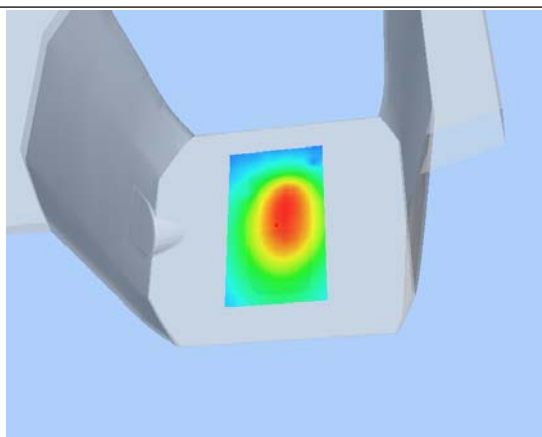
Z Axis Scan

Z (mm)	0.00	4.00	9.00	14.00	19.00	24.00	29.00
SAR (W/Kg)	0.0000	0.4412	0.3198	0.2217	0.1632	0.1203	0.0868

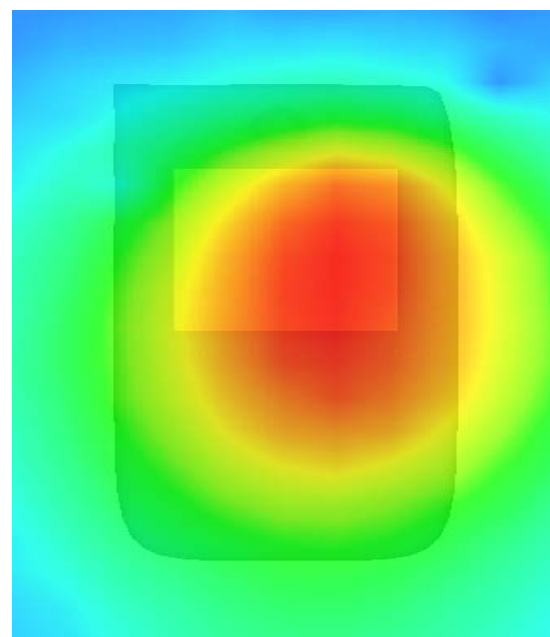
SAR, Z Axis Scan (X = 8, Y = 14)



3D scen shot



Hot spot position



MEASUREMENT 5

Type: Phone measurement (Complete)

Area scan resolution: dx=8mm,dy=8mm

Zoom scan resolution: dx=5mm, dy=5mm, dz=5mm

Date of measurement: 2013.7.11

Measurement duration: 13 minutes 9 seconds

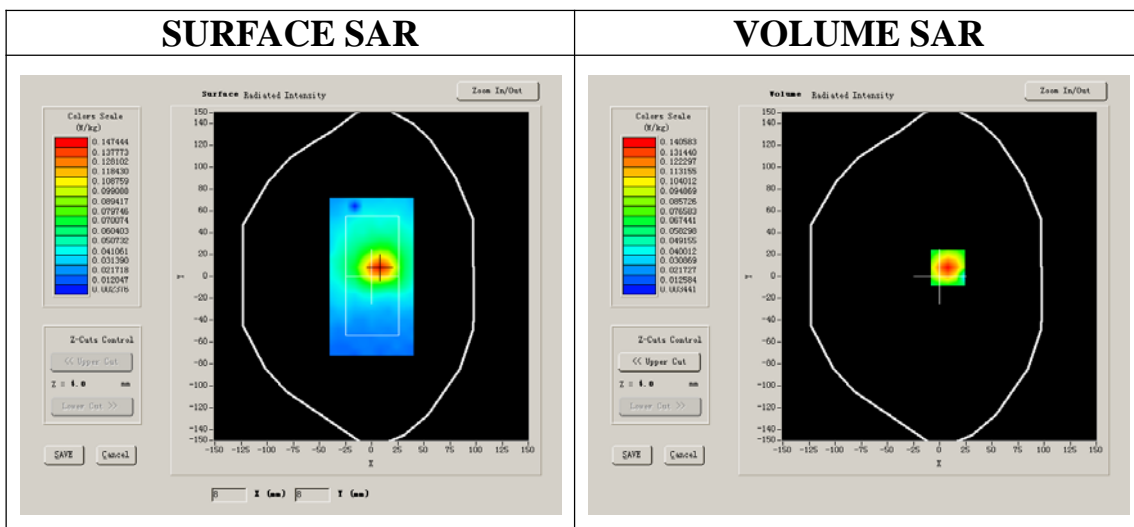
A. Experimental conditions.

Phantom File	surf_sam_plan.txt
Phantom	Flat Plane
Device Position	Body
Band	GSM850
Channels	Middle
Signal	GPRS

B. SAR Measurement Results

Middle Band SAR (Channel 190):

Frequency (MHz)	836.600000
Relative permittivity (real part)	55.140000
Conductivity (S/m)	0.960000
Power drift (%)	-1.050000
Ambient Temperature:	23.2°C
Liquid Temperature:	22.9°C
ConvF:	28.479,25.214,27.196
Crest factor:	1:2



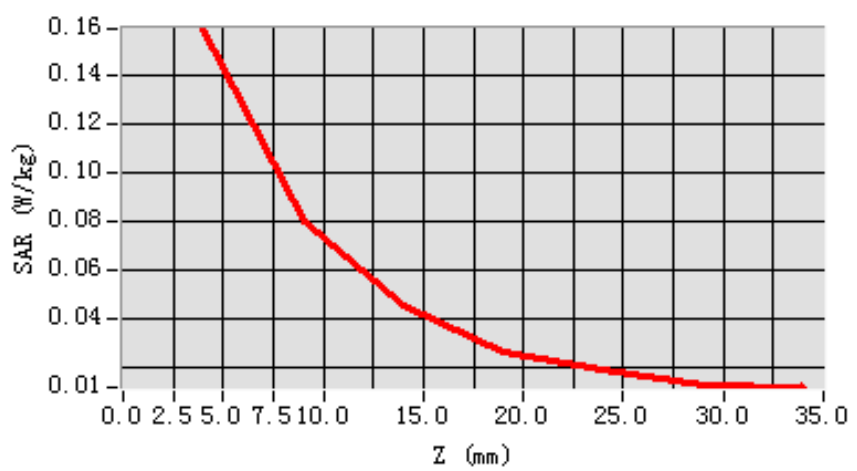
Maximum location: X=8.00, Y=8.00

SAR 10g (W/Kg)	0.082227
SAR 1g (W/Kg)	0.150389

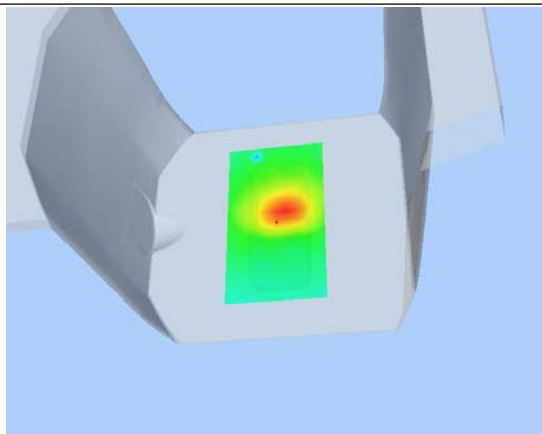
Z Axis Scan

Z (mm)	0.00	4.00	9.00	14.00	19.00	24.00	29.00
SAR (W/Kg)	0.0000	0.1596	0.0800	0.0448	0.0264	0.0191	0.0122

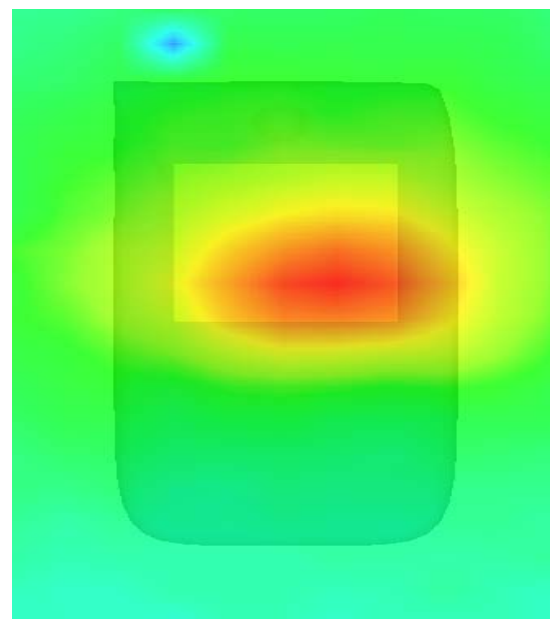
SAR, Z Axis Scan (X = 8, Y = 8)



3D scen shot



Hot spot position



MEASUREMENT 6

Type: Phone measurement (Complete)

Area scan resolution: dx=8mm,dy=8mm

Zoom scan resolution: dx=5mm, dy=5mm, dz=5mm

Date of measurement: 2013.7.9

Measurement duration: 13 minutes 11 seconds

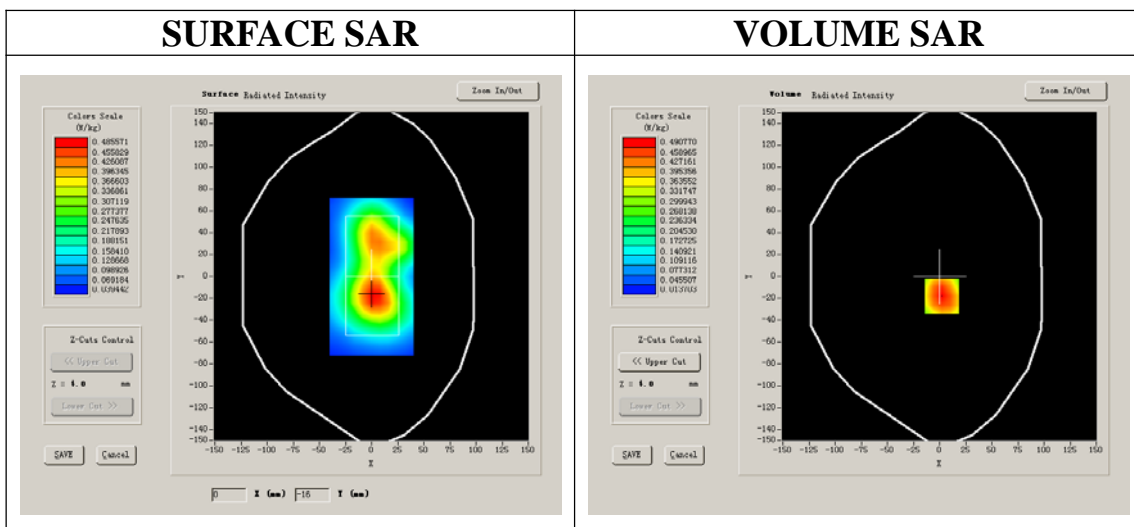
A. Experimental conditions.

Phantom File	surf_sam_plan.txt
Phantom	Flat Plane
Device Position	Body
Band	GSM850
Channels	Middle
Signal	EDGE

B. SAR Measurement Results

Middle Band SAR (Channel 190):

Frequency (MHz)	836.600000
Relative permittivity (real part)	55.140000
Conductivity (S/m)	0.960000
Power drift (%)	-0.170000
Ambient Temperature:	23.2°C
Liquid Temperature:	22.9°C
ConvF:	28.479,25.214,27.196
Crest factor:	1:2



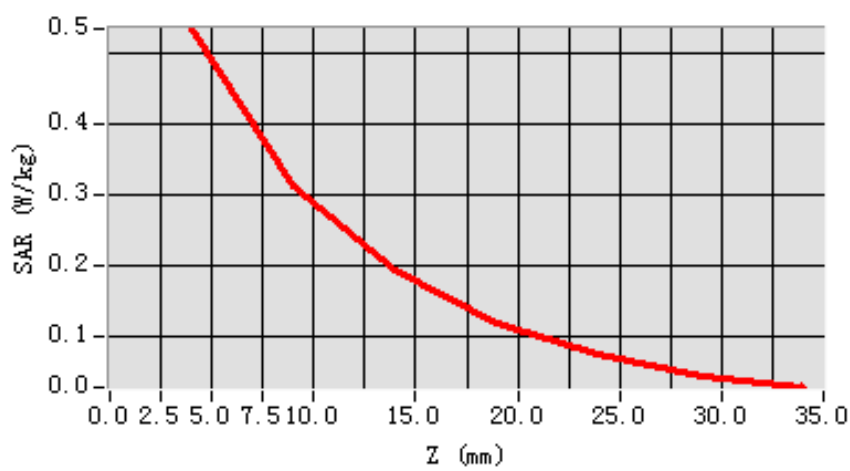
Maximum location: X=2.00, Y=-18.00

SAR 10g (W/Kg)	0.305548
SAR 1g (W/Kg)	0.510810

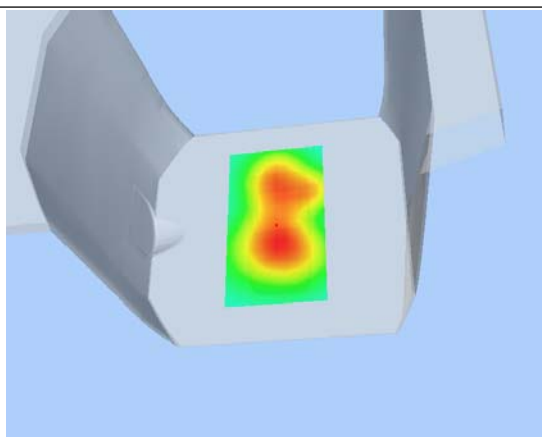
Z Axis Scan

Z (mm)	0.00	4.00	9.00	14.00	19.00	24.00	29.00
SAR (W/Kg)	0.0000	0.5344	0.3124	0.1930	0.1161	0.0726	0.0417

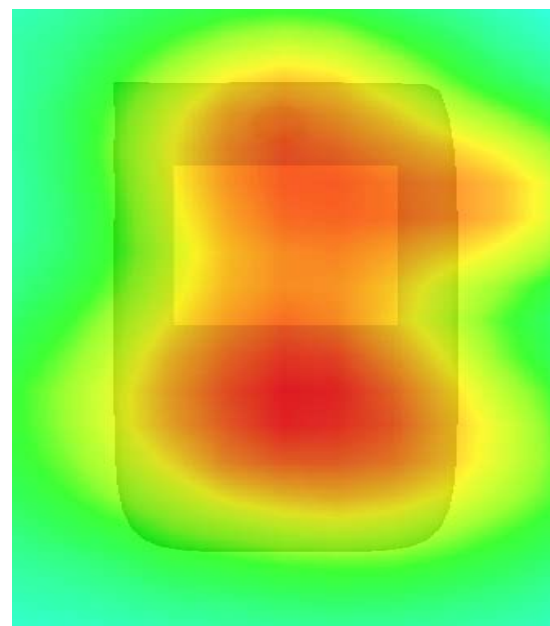
SAR, Z Axis Scan (X = 2, Y = -18)



3D scen shot



Hot spot position



MEASUREMENT 7

Type: Phone measurement (Complete)

Area scan resolution: dx=8mm,dy=8mm

Zoom scan resolution: dx=5mm, dy=5mm, dz=5mm

Date of measurement: 2013.7.11

Measurement duration: 13 minutes 11 seconds

A. Experimental conditions.

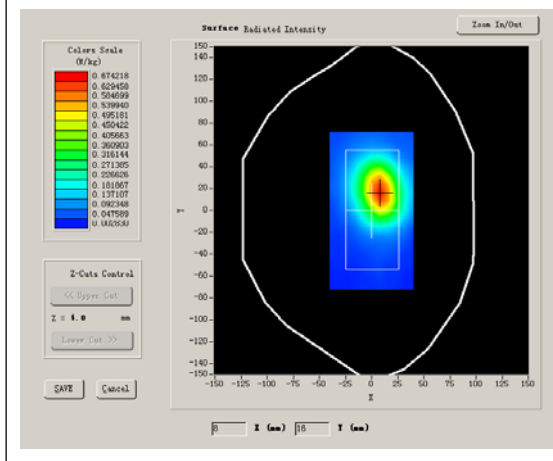
Phantom File	surf_sam_plan.txt
Phantom	Flat Plane
Device Position	Body
Band	GSM1900
Channels	Low
Signal	GPRS

B. SAR Measurement Results

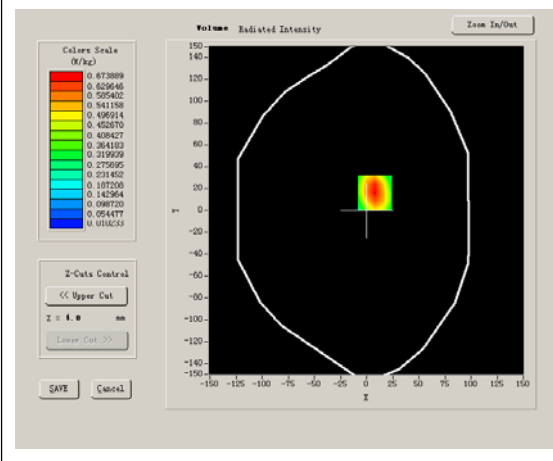
Lower Band SAR (Channel 512):

Frequency (MHz)	1850.200000
Relative permittivity (real part)	53.210000
Conductivity (S/m)	1.510000
Power drift (%)	-0.800000
Ambient Temperature:	23.2°C
Liquid Temperature:	22.6°C
ConvF:	40.625,34.773,38.535
Crest factor:	1:2

SURFACE SAR



VOLUME SAR



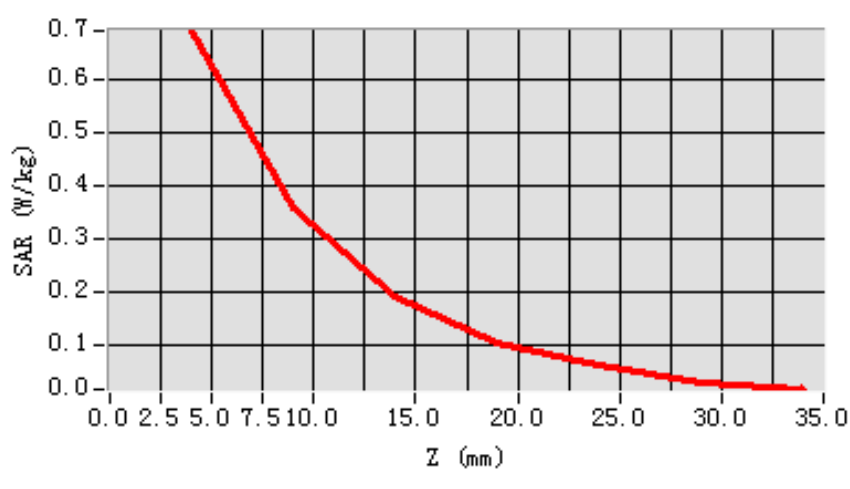
Maximum location: X=8.00, Y=16.00

SAR 10g (W/Kg)	0.354625
SAR 1g (W/Kg)	0.657596

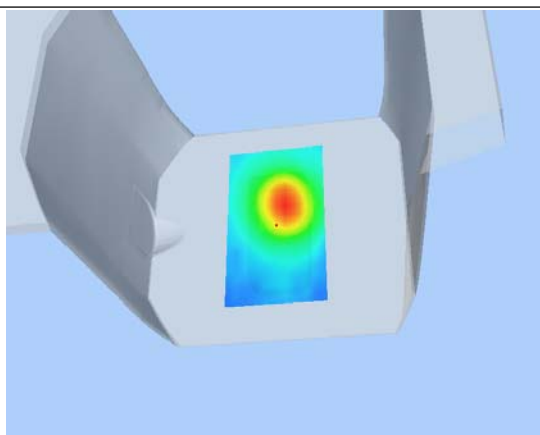
Z Axis Scan

Z (mm)	0.00	4.00	9.00	14.00	19.00	24.00	29.00
SAR (W/Kg)	0.0000	0.6896	0.3573	0.1916	0.1048	0.0638	0.0309

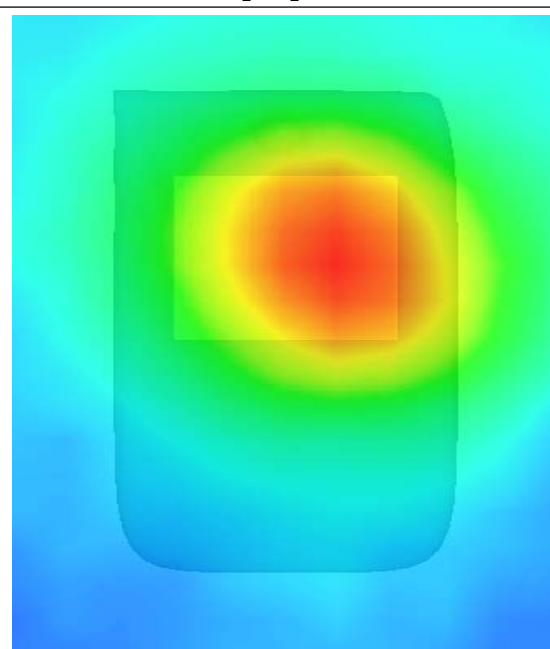
SAR, Z Axis Scan (X = 8, Y = 16)



3D scen shot



Hot spot position



MEASUREMENT 8

Type: Phone measurement (Complete)

Area scan resolution: dx=8mm,dy=8mm

Zoom scan resolution: dx=5mm, dy=5mm, dz=5mm

Date of measurement: 2013.7.11

Measurement duration: 13 minutes 7 seconds

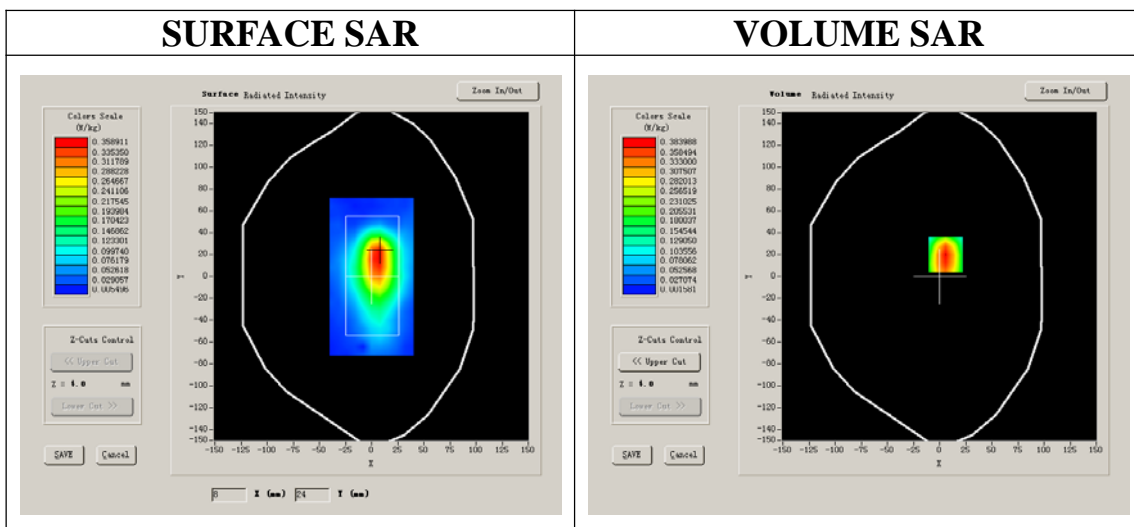
A. Experimental conditions.

Phantom File	surf_sam_plan.txt
Phantom	Flat Plane
Device Position	Body
Band	GSM1900
Channels	Low
Signal	GPRS

B. SAR Measurement Results

Lower Band SAR (Channel 512):

Frequency (MHz)	1850.200000
Relative permittivity (real part)	53.210000
Conductivity (S/m)	1.510000
Power drift (%)	-0.680000
Ambient Temperature:	23.2°C
Liquid Temperature:	22.6°C
ConvF:	40.625,34.773,38.535
Crest factor:	1:2



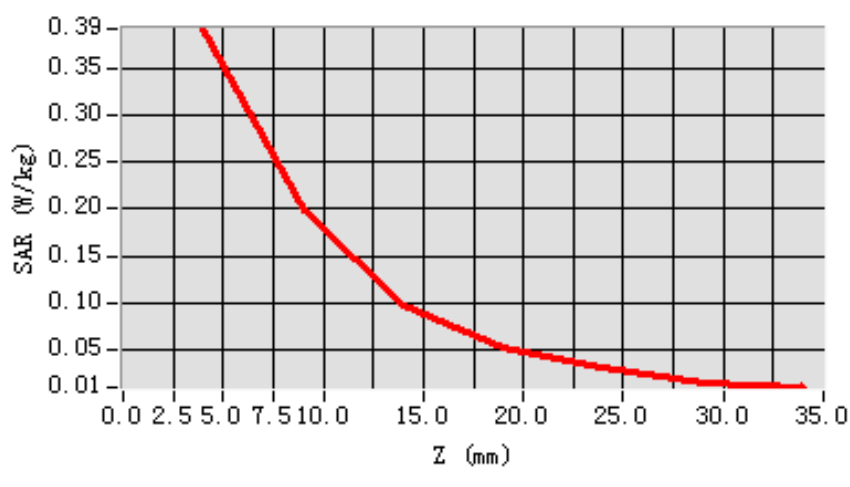
Maximum location: X=6.00, Y=20.00

SAR 10g (W/Kg)	0.196121
SAR 1g (W/Kg)	0.373159

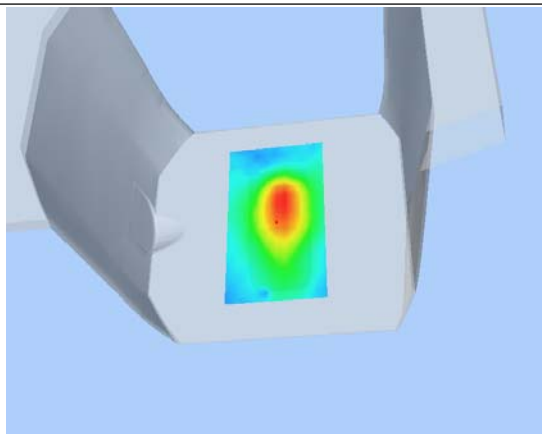
Z Axis Scan

Z (mm)	0.00	4.00	9.00	14.00	19.00	24.00	29.00
SAR (W/Kg)	0.0000	0.3929	0.1976	0.0963	0.0513	0.0308	0.0149

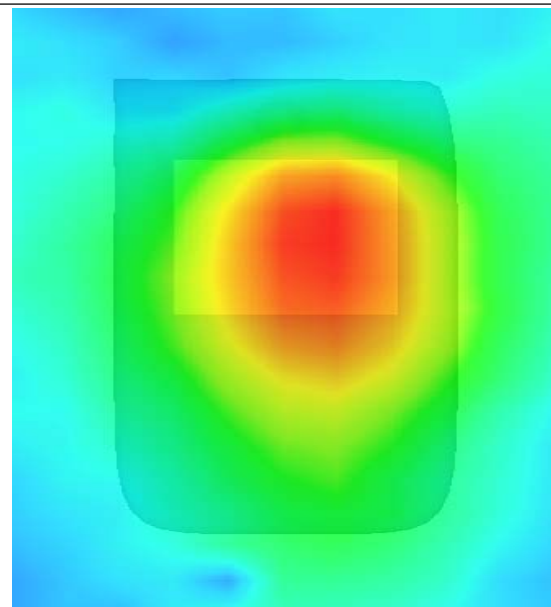
SAR, Z Axis Scan (X = 6, Y = 20)



3D scen shot



Hot spot position



MEASUREMENT 9

Type: Phone measurement (Complete)

Area scan resolution: dx=8mm,dy=8mm

Zoom scan resolution: dx=5mm, dy=5mm, dz=5mm

Date of measurement: 2013.7.11

Measurement duration: 13 minutes 7 seconds

A. Experimental conditions.

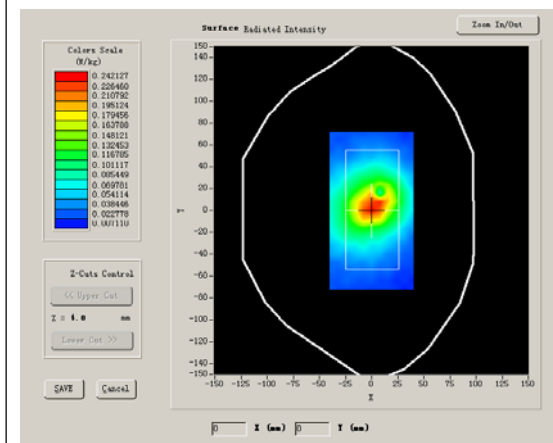
Phantom File	surf_sam_plan.txt
Phantom	Flat Plane
Device Position	Body
Band	GSM1900
Channels	Low
Signal	GPRS

B. SAR Measurement Results

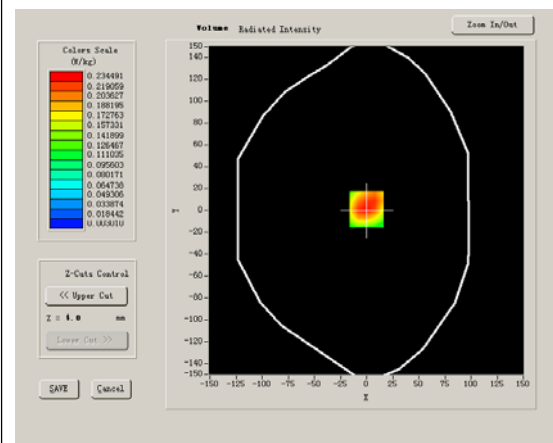
Lower Band SAR (Channel 512):

Frequency (MHz)	1850.200000
Relative permittivity (real part)	53.210000
Conductivity (S/m)	1.510000
Power drift (%)	-0.080000
Ambient Temperature:	23.2°C
Liquid Temperature:	22.6°C
ConvF:	40.625,34.773,38.535
Crest factor:	1:2

SURFACE SAR



VOLUME SAR



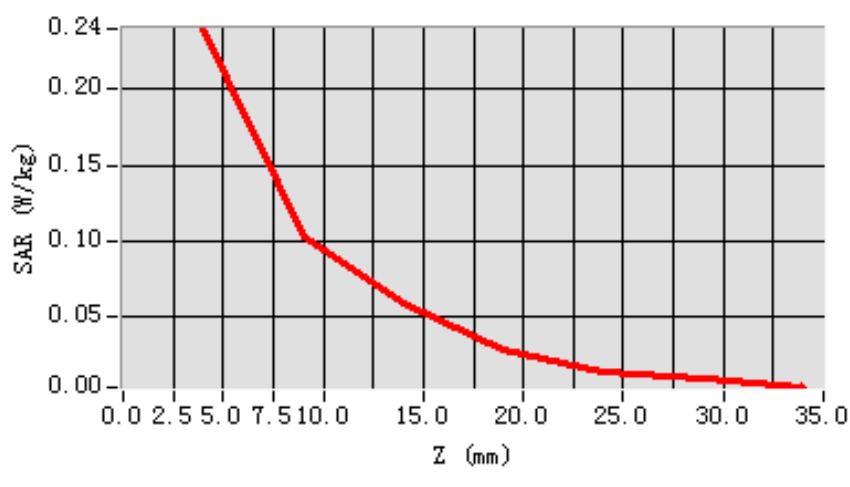
Maximum location: X=0.00, Y=1.00

SAR 10g (W/Kg)	0.123242
SAR 1g (W/Kg)	0.234841

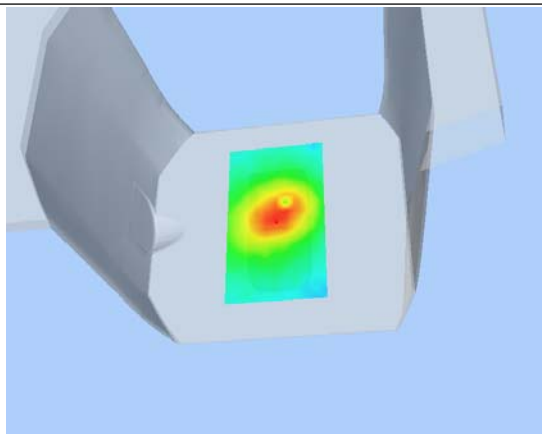
Z Axis Scan

Z (mm)	0.00	4.00	9.00	14.00	19.00	24.00	29.00
SAR (W/Kg)	0.0000	0.2399	0.1025	0.0585	0.0283	0.0129	0.0086

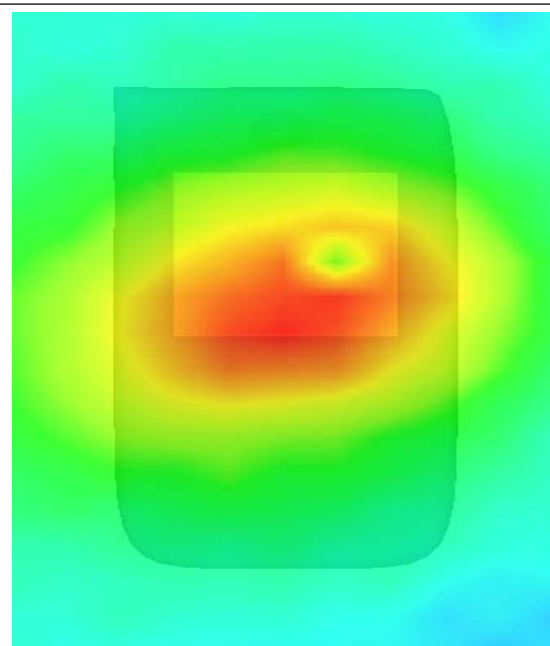
SAR, Z Axis Scan (X = 0, Y = 1)



3D scen shot



Hot spot position



MEASUREMENT 10

Type: Phone measurement (Complete)

Area scan resolution: dx=8mm,dy=8mm

Zoom scan resolution: dx=5mm, dy=5mm, dz=5mm

Date of measurement: 2013.7.11

Measurement duration: 13 minutes 7 seconds

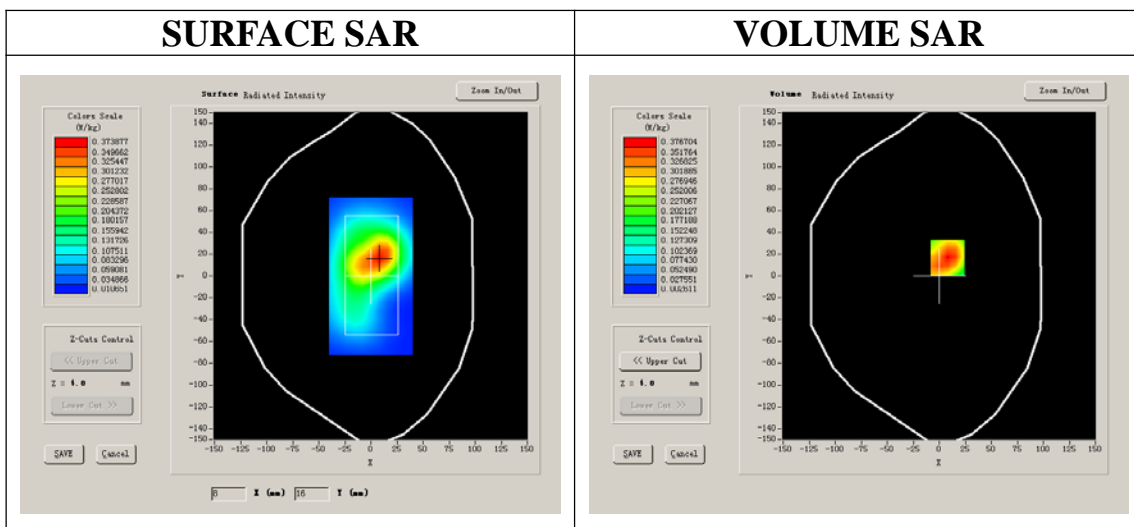
A. Experimental conditions.

Phantom File	surf_sam_plan.txt
Phantom	Flat Plane
Device Position	Body
Band	GSM1900
Channels	Low
Signal	GPRS

B. SAR Measurement Results

Lower Band SAR (Channel 512):

Frequency (MHz)	1850.200000
Relative permittivity (real part)	53.210000
Conductivity (S/m)	1.510000
Power drift (%)	-0.480000
Ambient Temperature:	23.2°C
Liquid Temperature:	22.6°C
ConvF:	40.625,34.773,38.535
Crest factor:	1:2



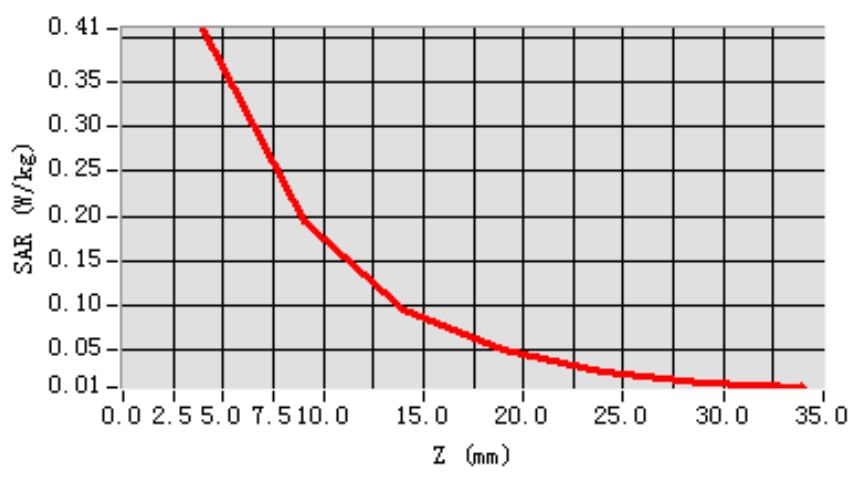
Maximum location: X=8.00, Y=17.00

SAR 10g (W/Kg)	0.205981
SAR 1g (W/Kg)	0.393367

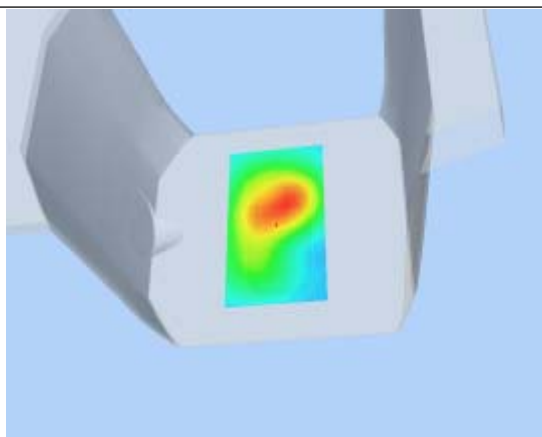
Z Axis Scan

Z (mm)	0.00	4.00	9.00	14.00	19.00	24.00	29.00
SAR (W/Kg)	0.0000	0.4102	0.1936	0.0951	0.0496	0.0237	0.0126

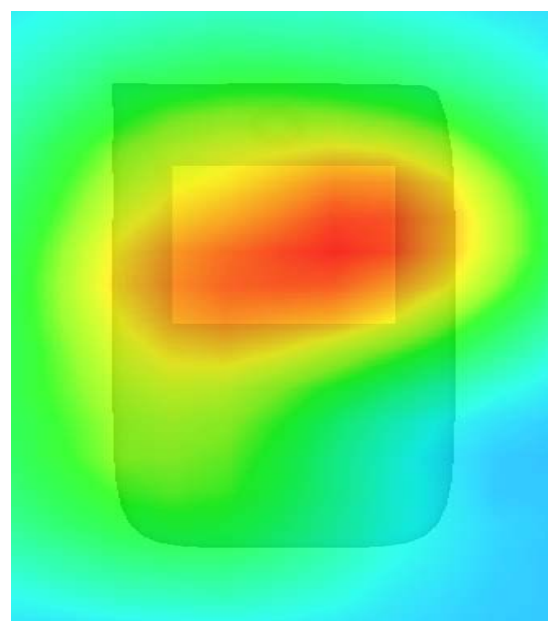
SAR, Z Axis Scan (X = 8, Y = 17)



3D scen shot



Hot spot position



MEASUREMENT 11

Type: Phone measurement (Complete)

Area scan resolution: dx=8mm,dy=8mm

Zoom scan resolution: dx=5mm, dy=5mm, dz=5mm

Date of measurement: 2013.7.11

Measurement duration: 13 minutes 7 seconds

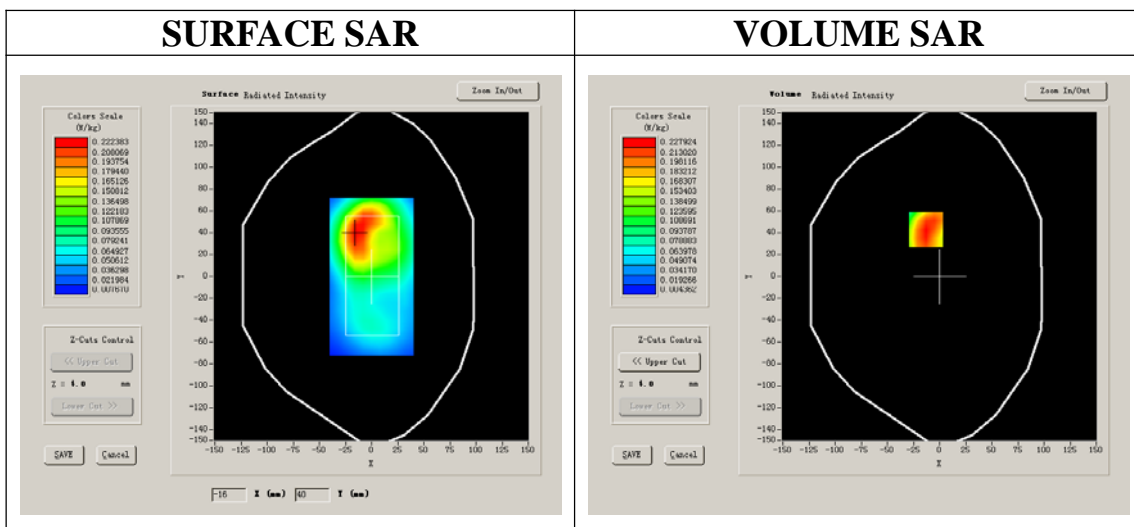
A. Experimental conditions.

Phantom File	surf_sam_plan.txt
Phantom	Flat Plane
Device Position	Body
Band	GSM1900
Channels	Low
Signal	GPRS

B. SAR Measurement Results

Lower Band SAR (Channel 512):

Frequency (MHz)	1850.200000
Relative permittivity (real part)	53.210000
Conductivity (S/m)	1.510000
Power drift (%)	-0.710000
Ambient Temperature:	23.2°C
Liquid Temperature:	22.6°C
ConvF:	40.625,34.773,38.535
Crest factor:	1:2



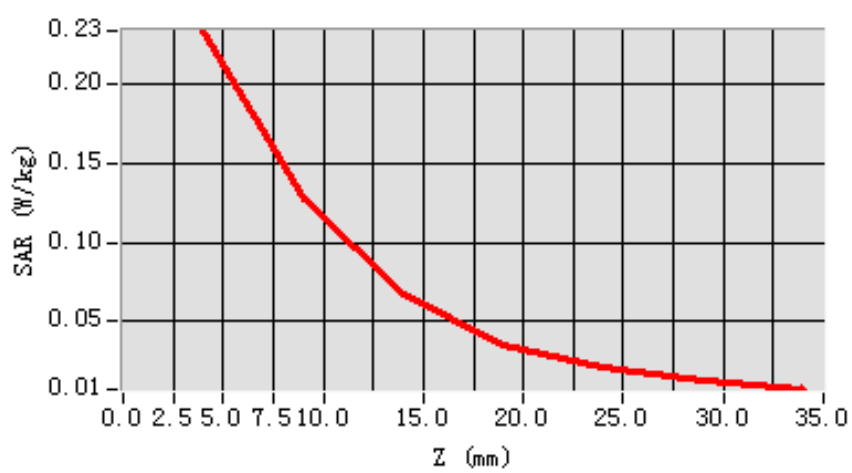
Maximum location: X=-13.00, Y=43.00

SAR 10g (W/Kg)	0.128250
SAR 1g (W/Kg)	0.209872

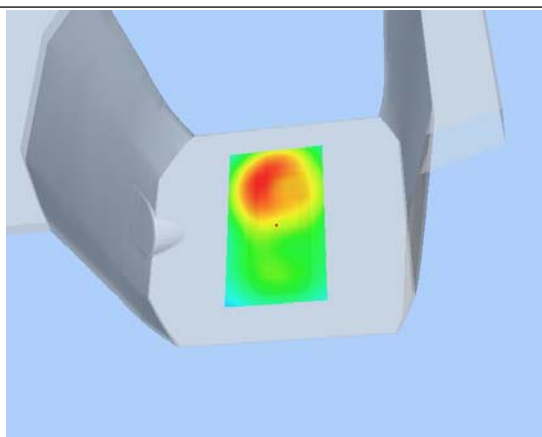
Z Axis Scan

Z (mm)	0.00	4.00	9.00	14.00	19.00	24.00	29.00
SAR (W/Kg)	0.0000	0.2332	0.1275	0.0668	0.0356	0.0207	0.0126

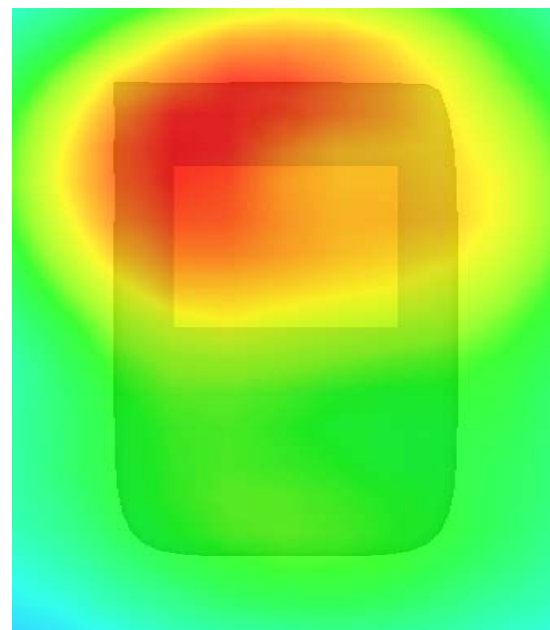
SAR, Z Axis Scan (X = -13, Y = 43)



3D scen shot



Hot spot position



MEASUREMENT 12

Type: Phone measurement (Complete)

Area scan resolution: dx=8mm,dy=8mm

Zoom scan resolution: dx=5mm, dy=5mm, dz=5mm

Date of measurement: 2013.7.11

Measurement duration: 13 minutes 11 seconds

A. Experimental conditions.

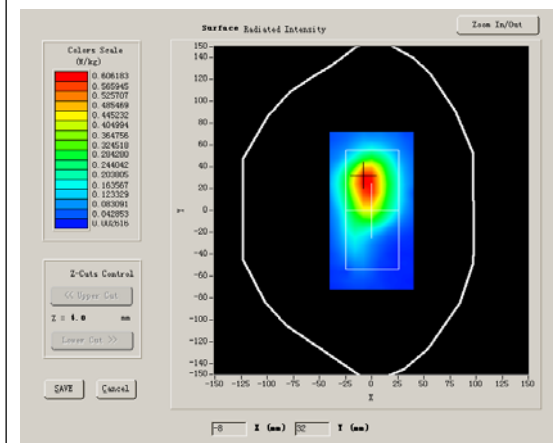
Phantom File	surf_sam_plan.txt
Phantom	Flat Plane
Device Position	Body
Band	GSM1900
Channels	Low
Signal	EDGE

B. SAR Measurement Results

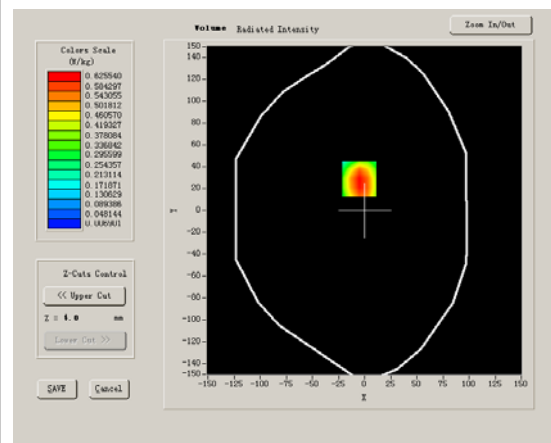
Low Band SAR (Channel 512):

Frequency (MHz)	1850.200000
Relative permittivity (real part)	53.210000
Conductivity (S/m)	1.510000
Power drift (%)	-0.800000
Ambient Temperature:	23.2°C
Liquid Temperature:	22.6°C
ConvF:	40.625,34.773,38.535
Crest factor:	1:2

SURFACE SAR



VOLUME SAR



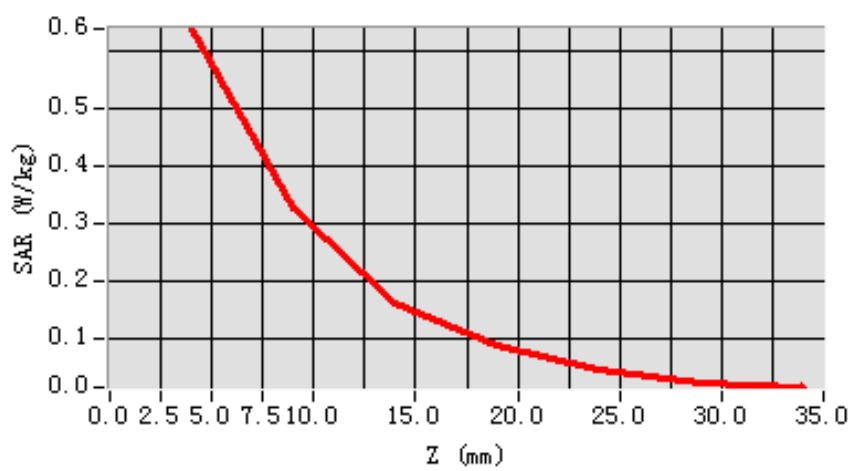
Maximum location: X=-5.00, Y=29.00

SAR 10g (W/Kg)	0.334355
SAR 1g (W/Kg)	0.614279

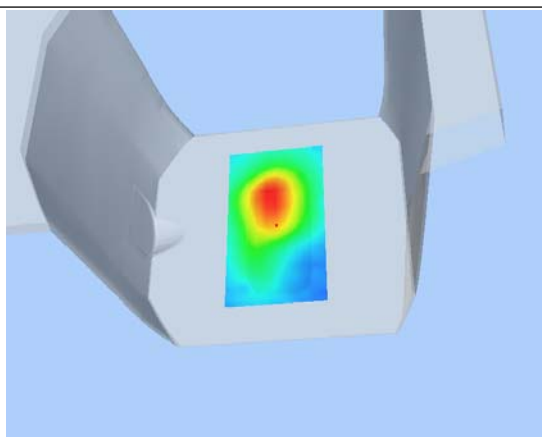
Z Axis Scan

Z (mm)	0.00	4.00	9.00	14.00	19.00	24.00	29.00
SAR (W/Kg)	0.0000	0.6401	0.3299	0.1626	0.0881	0.0483	0.0239

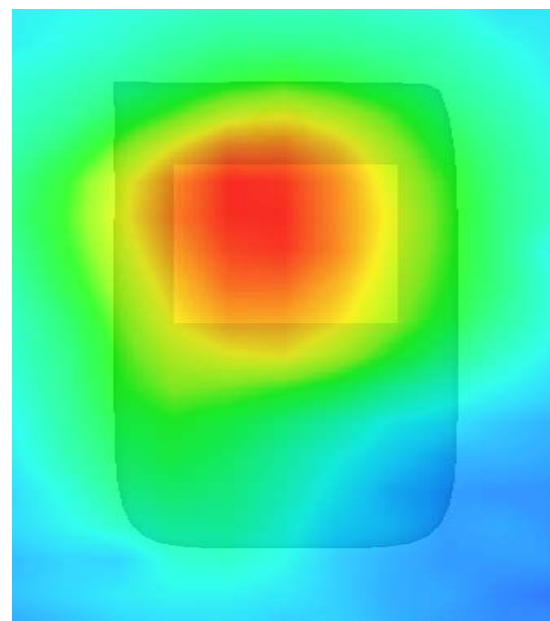
SAR, Z Axis Scan (X = -5, Y = 29)



3D scen shot



Hot spot position



MEASUREMENT 13

Type: Phone measurement (Complete)

Area scan resolution: dx=8mm,dy=8mm

Zoom scan resolution: dx=5mm, dy=5mm, dz=5mm

Date of measurement: 2013.7.9

Measurement duration: 13 minutes 9 seconds

A. Experimental conditions.

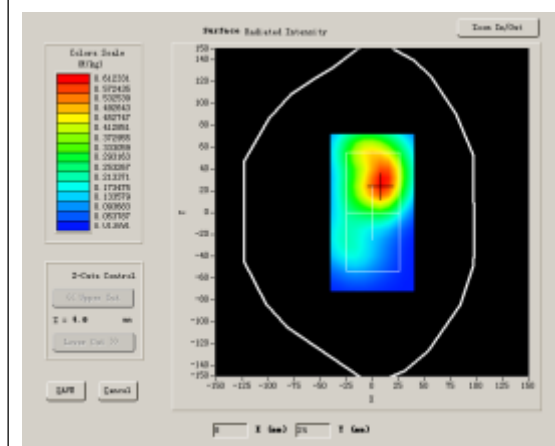
Phantom File	surf_sam_plan.txt
Phantom	Flat Plane
Device Position	Body
Band	WCDMA850
Channels	Middle
Signal	CDMA

B. SAR Measurement Results

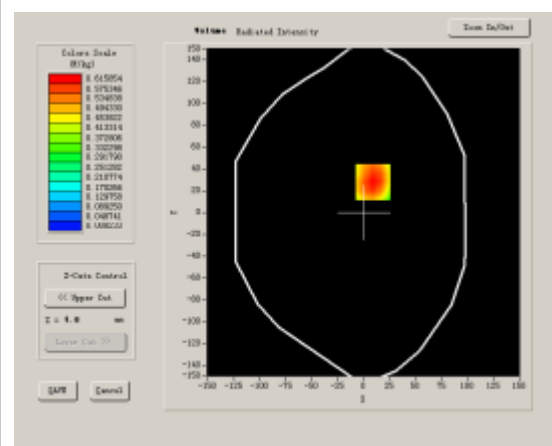
Middle Band SAR (Channel 4175):

Frequency (MHz)	835.000000
Relative permittivity (real part)	55.140000
Conductivity (S/m)	0.960000
Power drift (%)	-0.920000
Ambient Temperature:	23.2°C
Liquid Temperature:	22.6°C
ConvF:	28.479,25.214,27.196
Crest factor:	1:1

SURFACE SAR



VOLUME SAR



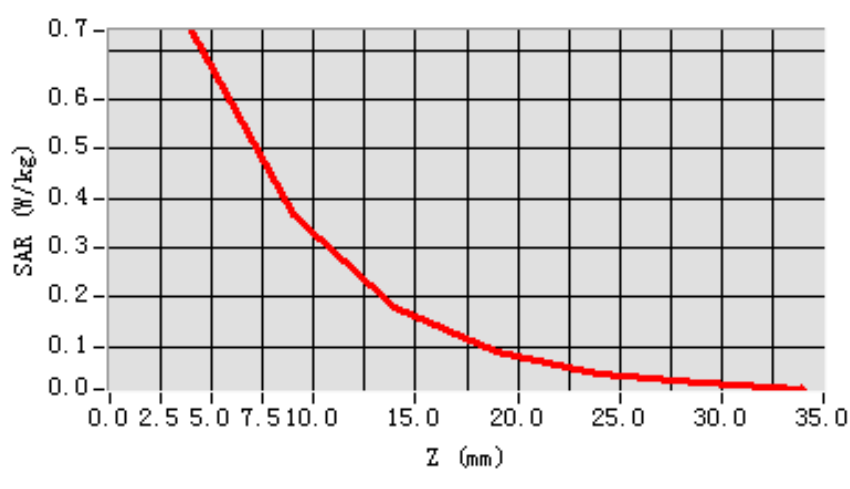
Maximum location: X=9.00, Y=28.00

SAR 10g (W/Kg)	0.386303
SAR 1g (W/Kg)	0.711126

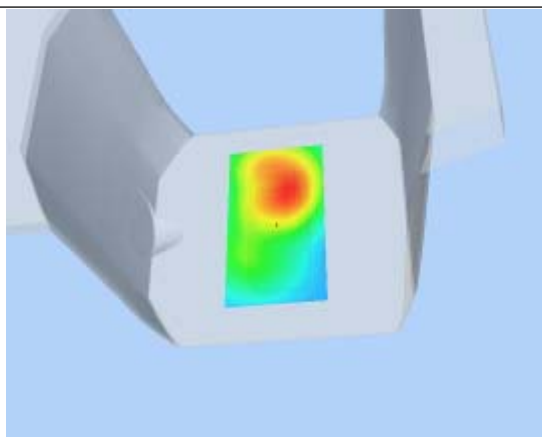
Z Axis Scan

Z (mm)	0.00	4.00	9.00	14.00	19.00	24.00	29.00
SAR (W/Kg)	0.0000	0.7391	0.3675	0.1807	0.0904	0.0456	0.0252

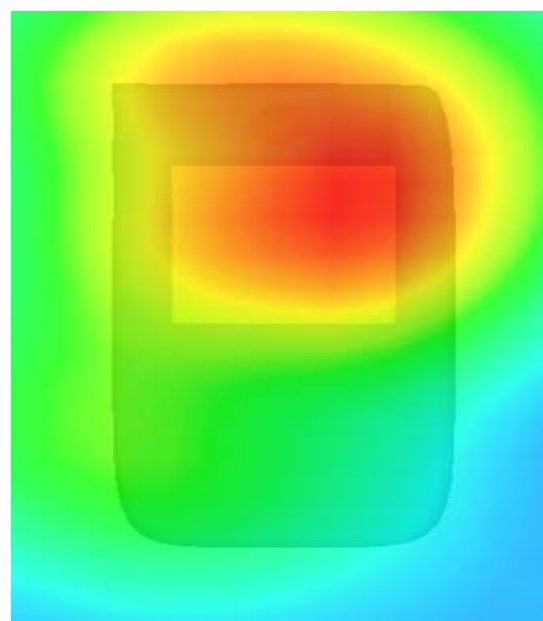
SAR, Z Axis Scan (X = 9, Y = 28)



3D scen shot



Hot spot position



MEASUREMENT 14

Type: Phone measurement (Complete)

Area scan resolution: dx=8mm,dy=8mm

Zoom scan resolution: dx=5mm, dy=5mm, dz=5mm

Date of measurement: 2013.7.9

Measurement duration: 13 minutes 7 seconds

A. Experimental conditions.

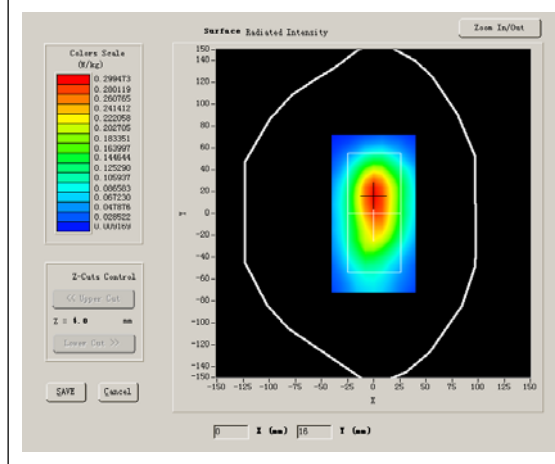
Phantom File	surf_sam_plan.txt
Phantom	Flat Plane
Device Position	Body
Band	WCDMA850
Channels	Middle
Signal	CDMA

B. SAR Measurement Results

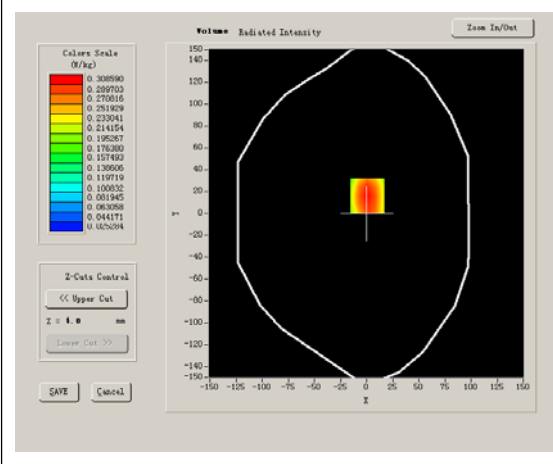
Middle Band SAR (Channel 4175):

Frequency (MHz)	835.000000
Relative permittivity (real part)	55.140000
Conductivity (S/m)	0.960000
Power drift (%)	-1.070000
Ambient Temperature:	23.2°C
Liquid Temperature:	22.6°C
ConvF:	28.479,25.214,27.196
Crest factor:	1:1

SURFACE SAR



VOLUME SAR



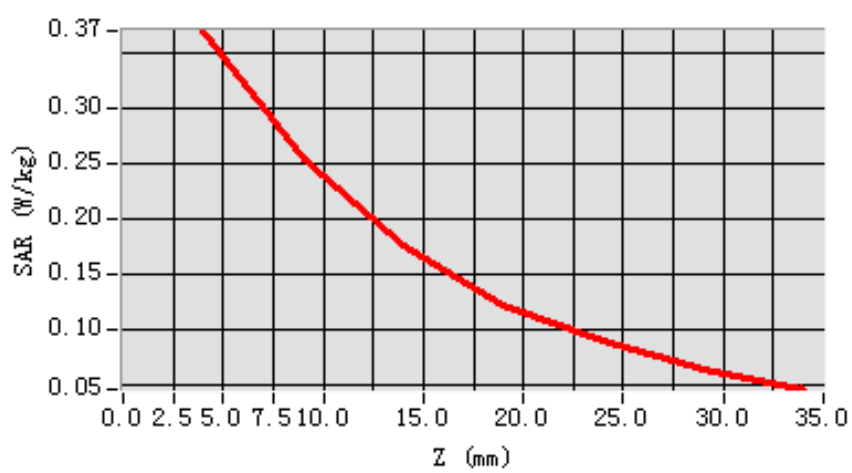
Maximum location: X=1.00, Y=16.00

SAR 10g (W/Kg)	0.240080
SAR 1g (W/Kg)	0.355925

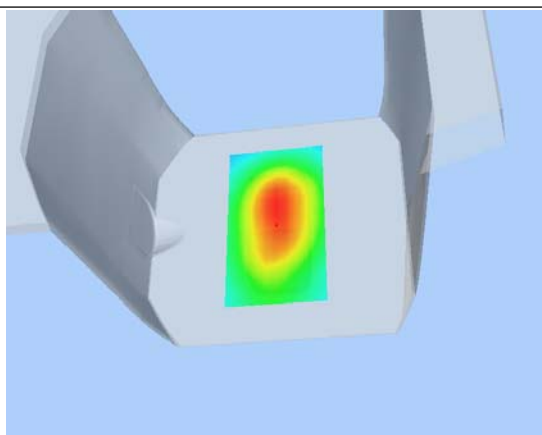
Z Axis Scan

Z (mm)	0.00	4.00	9.00	14.00	19.00	24.00	29.00
SAR (W/Kg)	0.0000	0.3703	0.2551	0.1764	0.1226	0.0901	0.0647

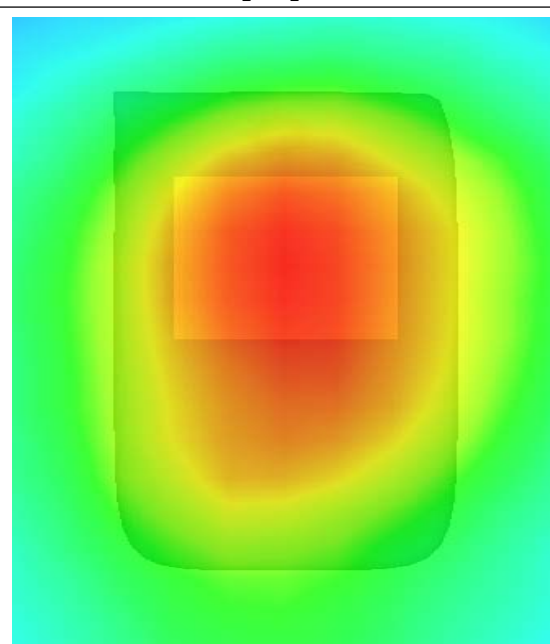
SAR, Z Axis Scan (X = 1, Y = 16)



3D scen shot



Hot spot position



MEASUREMENT 15

Type: Phone measurement (Complete)

Area scan resolution: dx=8mm,dy=8mm

Zoom scan resolution: dx=5mm, dy=5mm, dz=5mm

Date of measurement: 2013.7.9

Measurement duration: 13 minutes 15 seconds

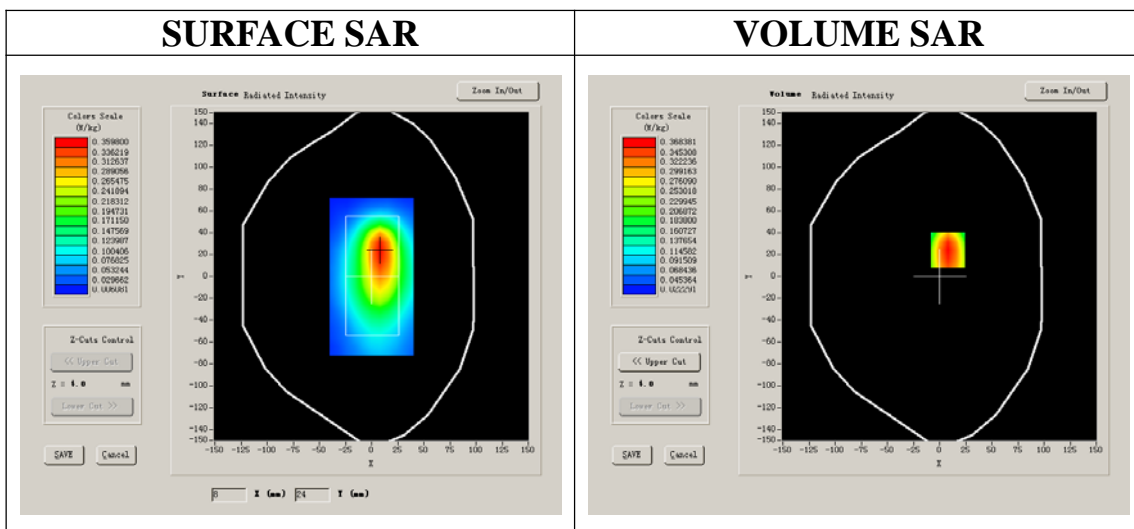
A. Experimental conditions.

Phantom File	surf_sam_plan.txt
Phantom	Flat Plane
Device Position	Body
Band	WCDMA850
Channels	Middle
Signal	CDMA

B. SAR Measurement Results

Middle Band SAR (Channel 4175):

Frequency (MHz)	835.000000
Relative permittivity (real part)	55.140000
Conductivity (S/m)	0.960000
Power drift (%)	-0.460000
Ambient Temperature:	23.2°C
Liquid Temperature:	22.6°C
ConvF:	28.479,25.214,27.196
Crest factor:	1:1



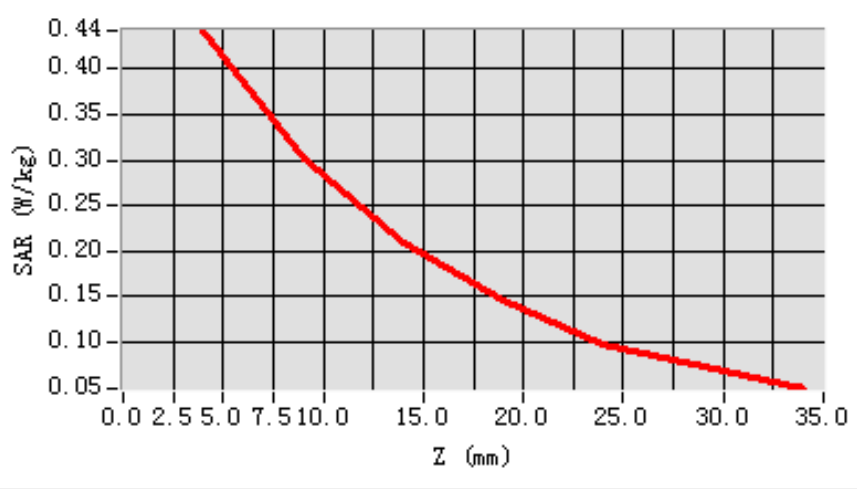
Maximum location: X=8.00, Y=24.00

SAR 10g (W/Kg)	0.276753
SAR 1g (W/Kg)	0.419291

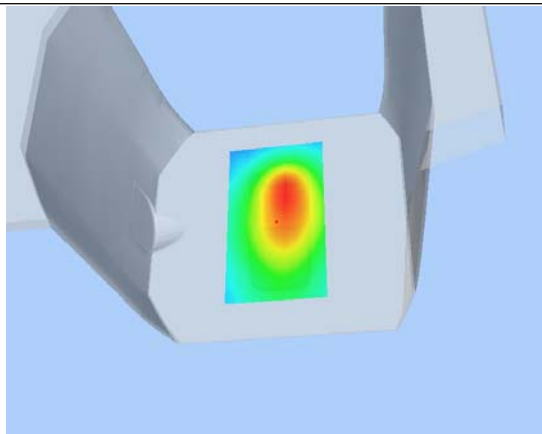
Z Axis Scan

Z (mm)	0.00	4.00	9.00	14.00	19.00	24.00	29.00
SAR (W/Kg)	0.0000	0.4421	0.3007	0.2095	0.1459	0.0981	0.0735

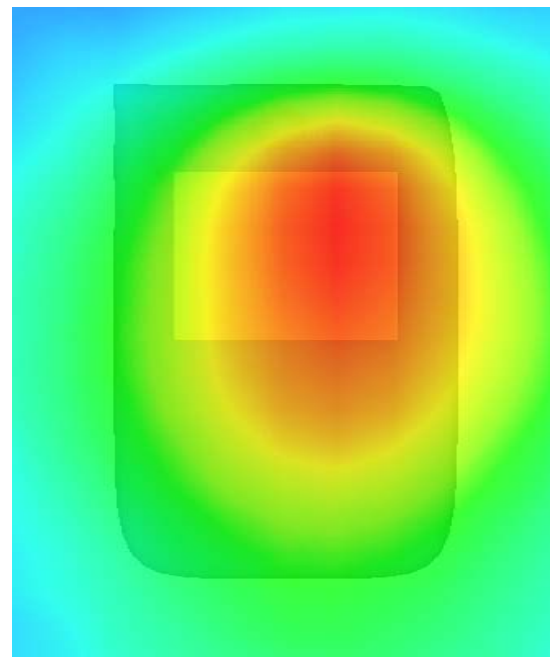
SAR, Z Axis Scan (X = 8, Y = 24)



3D scene shot



Hot spot position



MEASUREMENT 16

Type: Phone measurement (Complete)

Area scan resolution: dx=8mm,dy=8mm

Zoom scan resolution: dx=5mm, dy=5mm, dz=5mm

Date of measurement: 2013.7.9

Measurement duration: 13 minutes 4 seconds

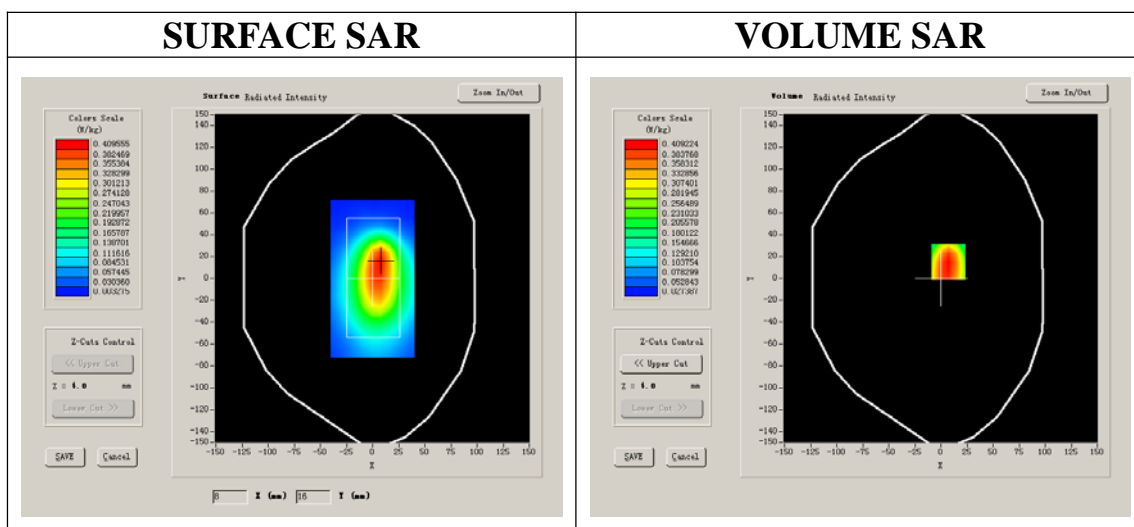
A. Experimental conditions.

Phantom File	surf_sam_plan.txt
Phantom	Flat Plane
Device Position	Body
Band	WCDMA850
Channels	Middle
Signal	CDMA

B. SAR Measurement Results

Middle Band SAR (Channel 4175):

Frequency (MHz)	835.000000
Relative permittivity (real part)	55.140000
Conductivity (S/m)	0.960000
Power drift (%)	-0.420000
Ambient Temperature:	23.2°C
Liquid Temperature:	22.6°C
ConvF:	28.479,25.214,27.196
Crest factor:	1:1



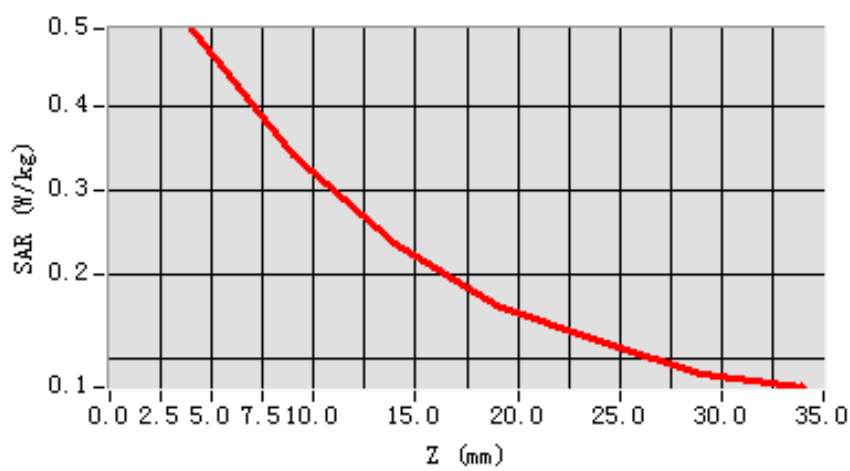
Maximum location: X=7.00, Y=15.00

SAR 10g (W/Kg)	0.315208
SAR 1g (W/Kg)	0.470475

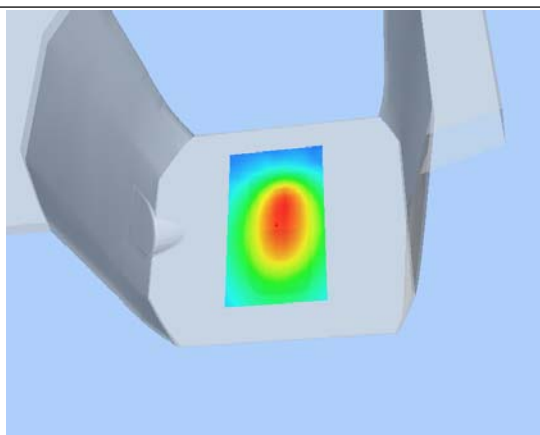
Z Axis Scan

Z (mm)	0.00	4.00	9.00	14.00	19.00	24.00	29.00
SAR (W/Kg)	0.0000	0.4911	0.3407	0.2361	0.1621	0.1201	0.0824

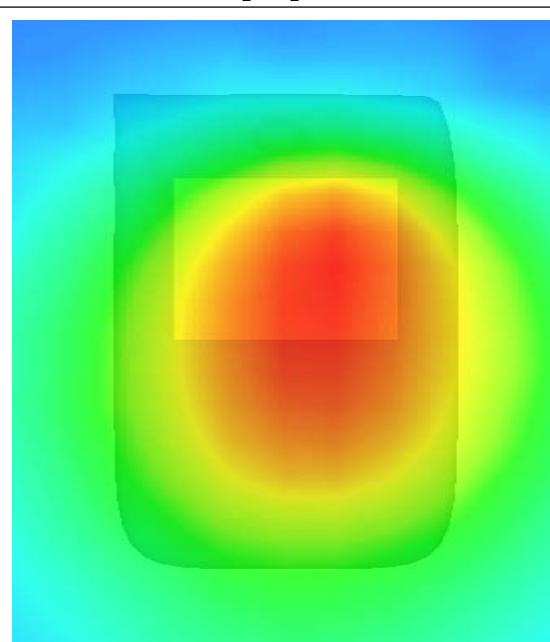
SAR, Z Axis Scan (X = 7, Y = 15)



3D scen shot



Hot spot position



MEASUREMENT 17

Type: Phone measurement (Complete)

Area scan resolution: dx=8mm,dy=8mm

Zoom scan resolution: dx=5mm, dy=5mm, dz=5mm

Date of measurement: 2013.7.9

Measurement duration: 13 minutes 4 seconds

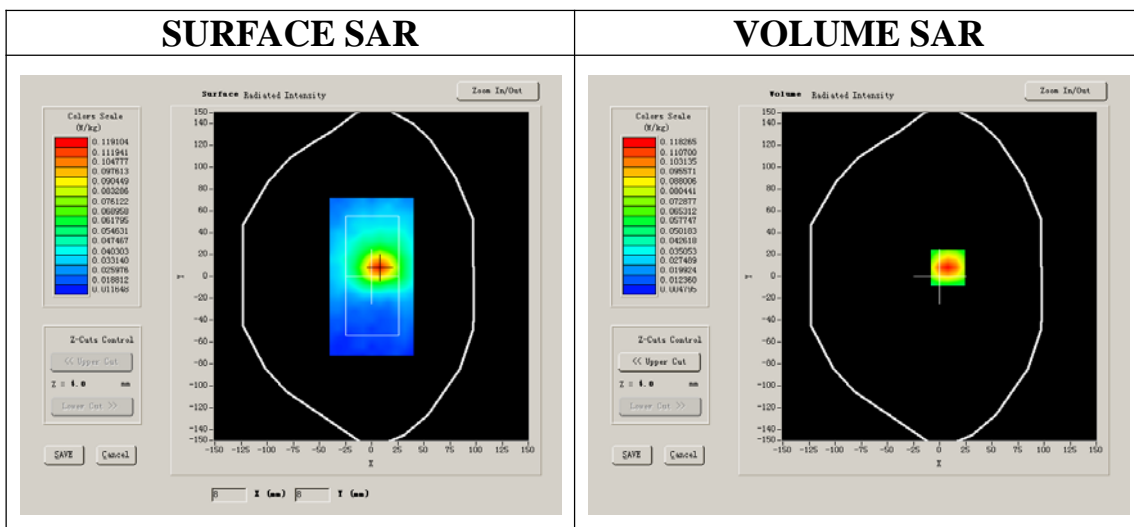
A. Experimental conditions.

Phantom File	surf_sam_plan.txt
Phantom	Flat Plane
Device Position	Body
Band	WCDMA850
Channels	Middle
Signal	CDMA

B. SAR Measurement Results

Middle Band SAR (Channel 4175):

Frequency (MHz)	835.000000
Relative permittivity (real part)	55.140000
Conductivity (S/m)	0.960000
Power drift (%)	-0.250000
Ambient Temperature:	23.2°C
Liquid Temperature:	22.6°C
ConvF:	28.479,25.214,27.196
Crest factor:	1:1



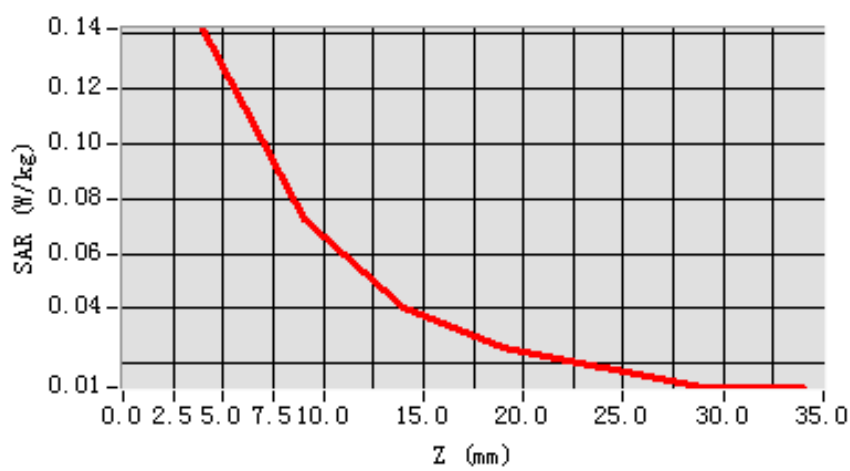
Maximum location: X=8.00, Y=8.00

SAR 10g (W/Kg)	0.074386
SAR 1g (W/Kg)	0.134987

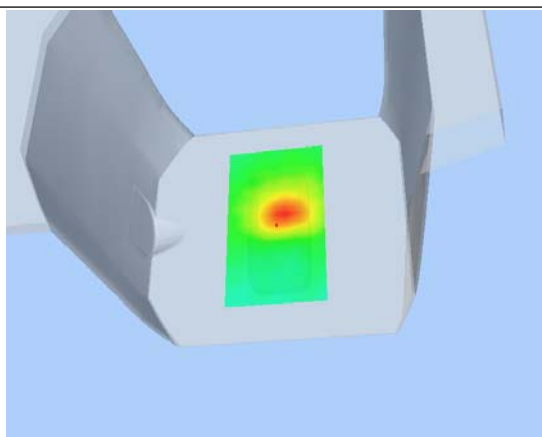
Z Axis Scan

Z (mm)	0.00	4.00	9.00	14.00	19.00	24.00	29.00
SAR (W/Kg)	0.0000	0.1419	0.0723	0.0400	0.0256	0.0185	0.0113

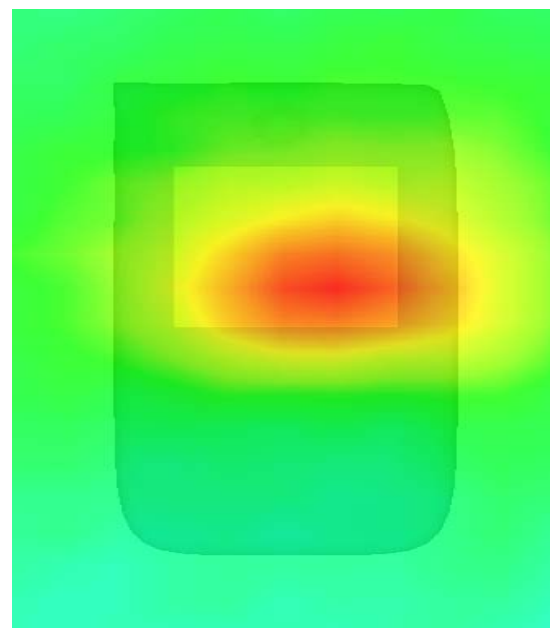
SAR, Z Axis Scan (X = 8, Y = 8)



3D scen shot



Hot spot position



MEASUREMENT 18

Type: Phone measurement (Complete)

Area scan resolution: dx=8mm,dy=8mm

Zoom scan resolution: dx=8mm, dy=8mm, dz=5mm

Date of measurement: 2013.7.10

Measurement duration: 9 minutes 7 seconds

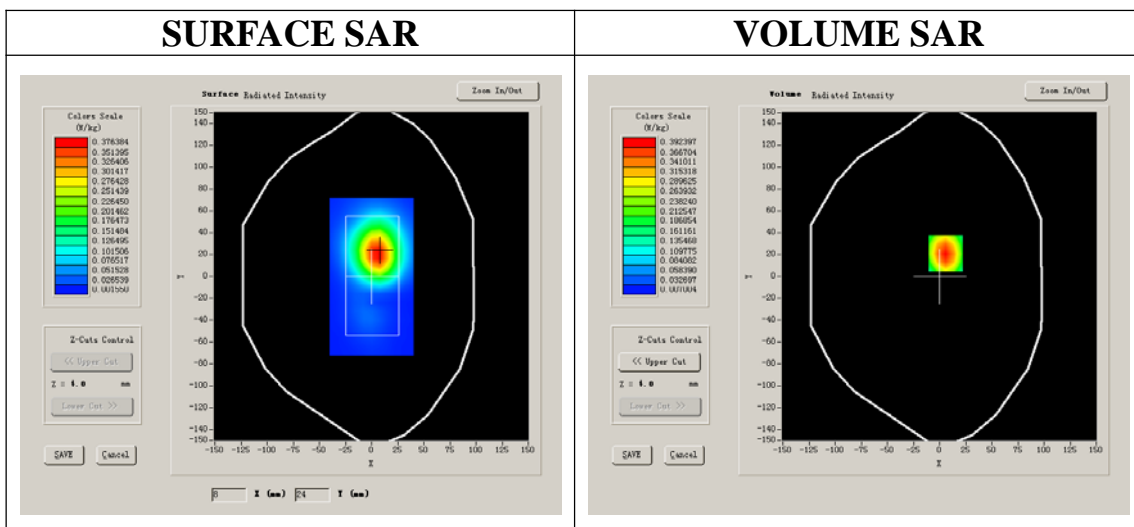
A. Experimental conditions.

Phantom File	surf_sam_plan.txt
Phantom	Validation plane
Device Position	Body
Band	WCDMA1700
Channels	Low
Signal	CDMA

B. SAR Measurement Results

Lower Band SAR (Channel 1312):

Frequency (MHz)	1712.400000
Relative permittivity (real part)	53.510000
Conductivity (S/m)	1.470000
Power drift (%)	-0.360000
Ambient Temperature:	22.7°C
Liquid Temperature:	22.3°C
ConvF:	42.982,37.514,41.835
Crest factor:	1:1



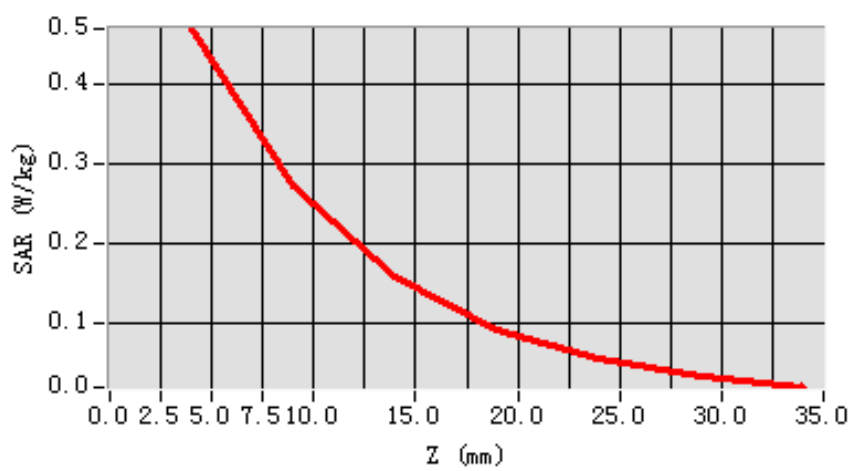
Maximum location: X=6.00, Y=21.00

SAR 10g (W/Kg)	0.250292
SAR 1g (W/Kg)	0.444450

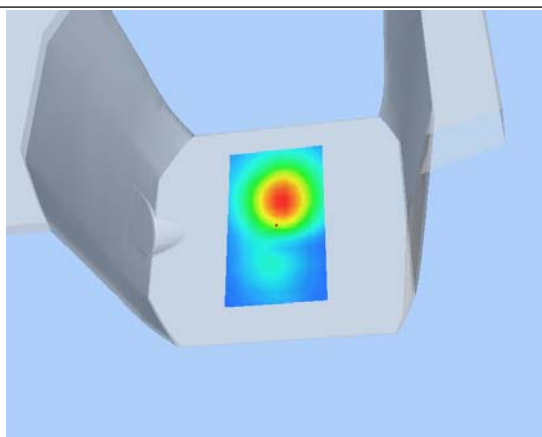
Z Axis Scan

Z (mm)	0.00	4.00	9.00	14.00	19.00	24.00	29.00
SAR (W/Kg)	0.0000	0.4709	0.2717	0.1586	0.0908	0.0533	0.0314

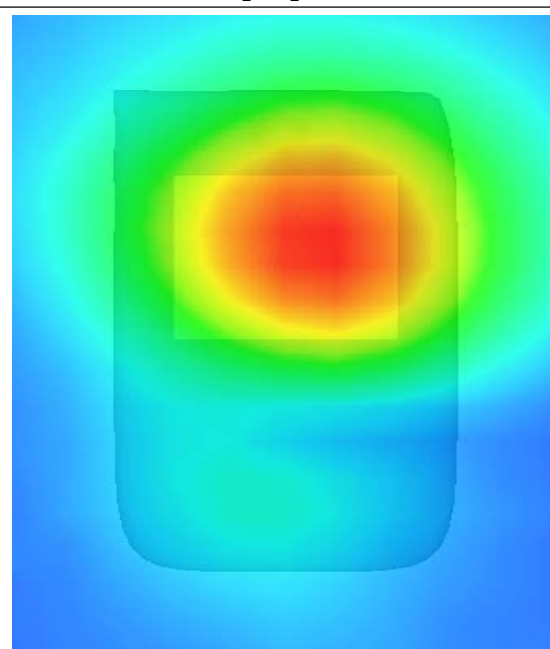
SAR, Z Axis Scan (X = 6, Y = 21)



3D scen shot



Hot spot position



MEASUREMENT 19

Type: Phone measurement (Complete)

Area scan resolution: dx=8mm,dy=8mm

Zoom scan resolution: dx=8mm, dy=8mm, dz=5mm

Date of measurement: 2013.7.10

Measurement duration: 9 minutes 14 seconds

A. Experimental conditions.

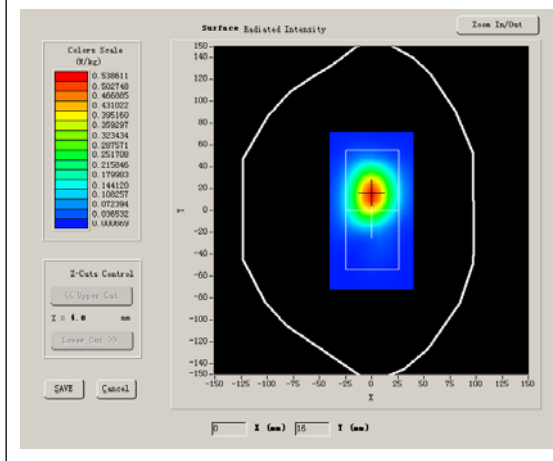
Phantom File	surf_sam_plan.txt
Phantom	Validation plane
Device Position	Body
Band	WCDMA1700
Channels	Low
Signal	CDMA

B. SAR Measurement Results

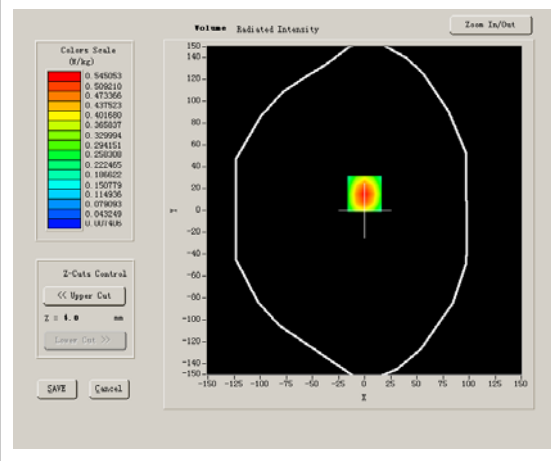
Lower Band SAR (Channel 1312):

Frequency (MHz)	1712.400000
Relative permittivity (real part)	53.510000
Conductivity (S/m)	1.470000
Power drift (%)	-0.080000
Ambient Temperature:	22.7°C
Liquid Temperature:	22.3°C
ConvF:	42.982,37.514,41.835
Crest factor:	1:1

SURFACE SAR



VOLUME SAR



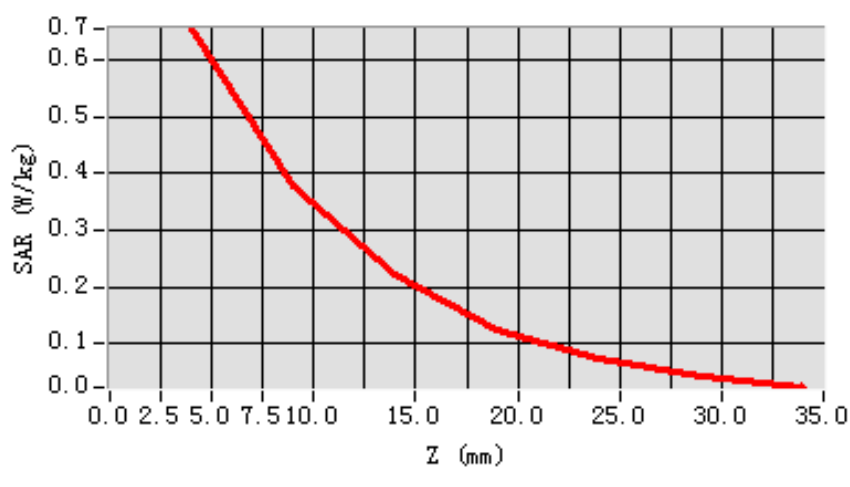
Maximum location: X=0.00, Y=15.00

SAR 10g (W/Kg)	0.344896
SAR 1g (W/Kg)	0.616462

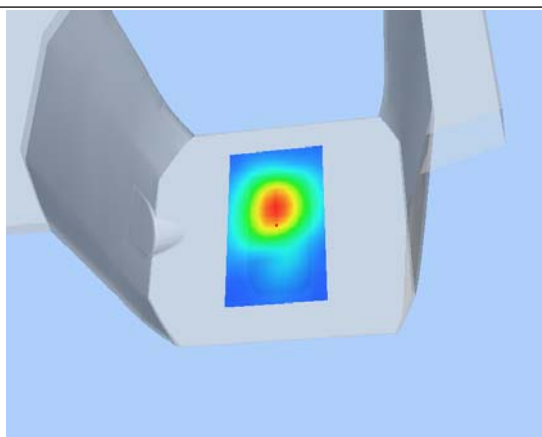
Z Axis Scan

Z (mm)	0.00	4.00	9.00	14.00	19.00	24.00	29.00
SAR (W/Kg)	0.0000	0.6541	0.3787	0.2200	0.1253	0.0729	0.0418

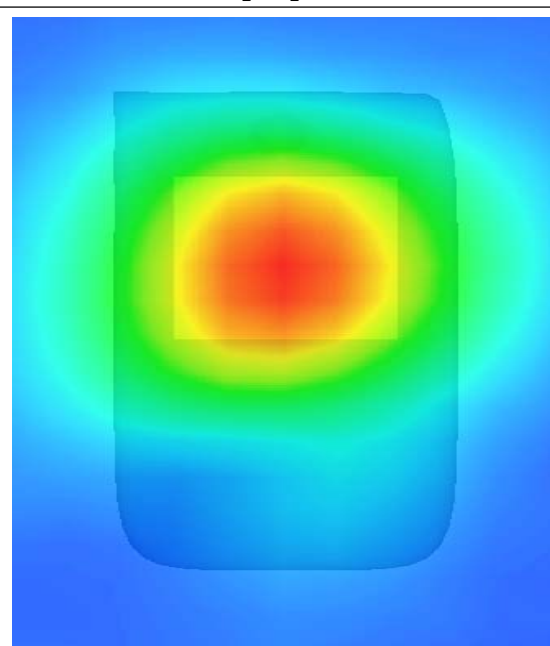
SAR, Z Axis Scan (X = 0, Y = 15)



3D scen shot



Hot spot position



MEASUREMENT 20

Type: Phone measurement (Complete)

Area scan resolution: dx=8mm,dy=8mm

Zoom scan resolution: dx=8mm, dy=8mm, dz=5mm

Date of measurement: 2013.7.10

Measurement duration: 9 minutes 14 seconds

A. Experimental conditions.

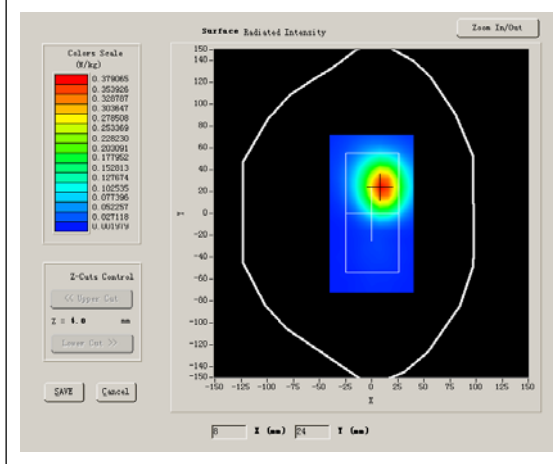
Phantom File	surf_sam_plan.txt
Phantom	Validation plane
Device Position	Body
Band	WCDMA1700
Channels	Low
Signal	CDMA

B. SAR Measurement Results

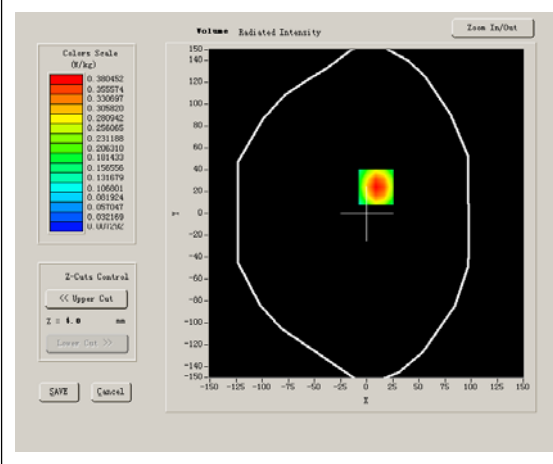
Lower Band SAR (Channel 1312):

Frequency (MHz)	1712.400000
Relative permittivity (real part)	53.510000
Conductivity (S/m)	1.470000
Power drift (%)	-0.320000
Ambient Temperature:	22.7°C
Liquid Temperature:	22.3°C
ConvF:	42.982,37.514,41.835
Crest factor:	1:1

SURFACE SAR



VOLUME SAR



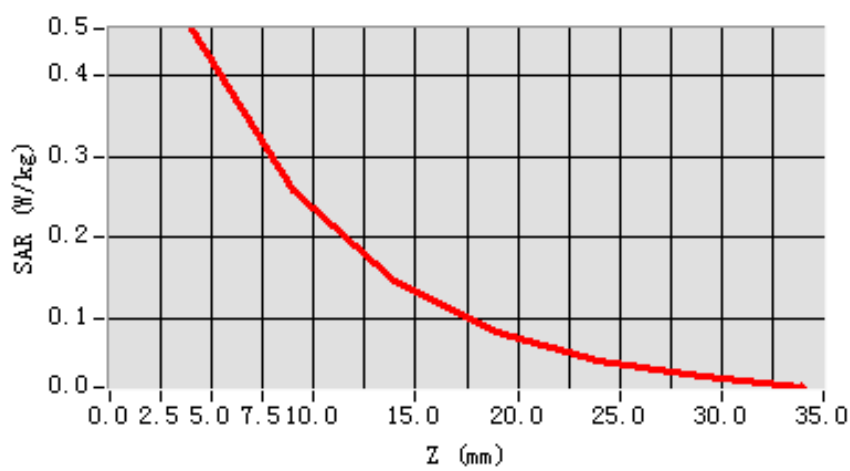
Maximum location: X=9.00, Y=24.00

SAR 10g (W/Kg)	0.241442
SAR 1g (W/Kg)	0.433543

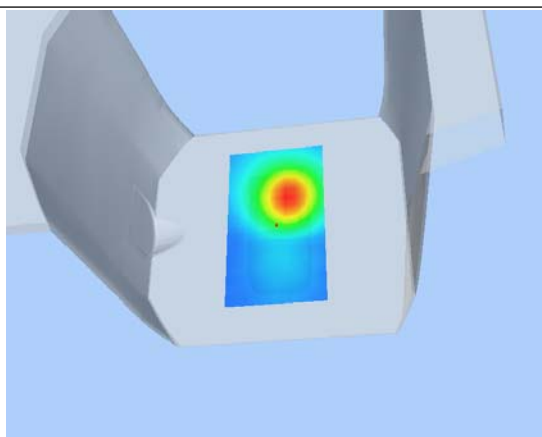
Z Axis Scan

Z (mm)	0.00	4.00	9.00	14.00	19.00	24.00	29.00
SAR (W/Kg)	0.0000	0.4566	0.2591	0.1475	0.0839	0.0496	0.0287

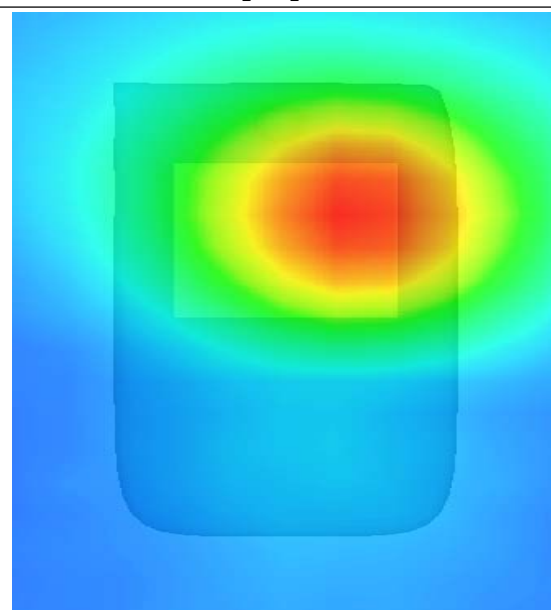
SAR, Z Axis Scan (X = 9, Y = 24)



3D scen shot



Hot spot position



MEASUREMENT 21

Type: Phone measurement (Complete)

Area scan resolution: dx=8mm,dy=8mm

Zoom scan resolution: dx=8mm, dy=8mm, dz=5mm

Date of measurement: 2013.7.10

Measurement duration: 9 minutes 14 seconds

A. Experimental conditions.

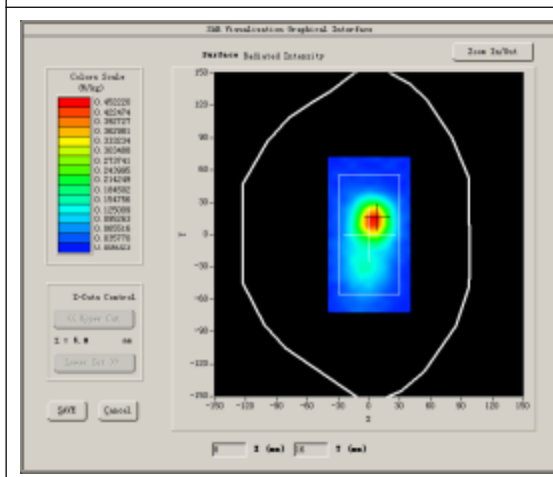
Phantom File	surf_sam_plan.txt
Phantom	Validation plane
Device Position	Body
Band	WCDMA1700
Channels	Low
Signal	CDMA

B. SAR Measurement Results

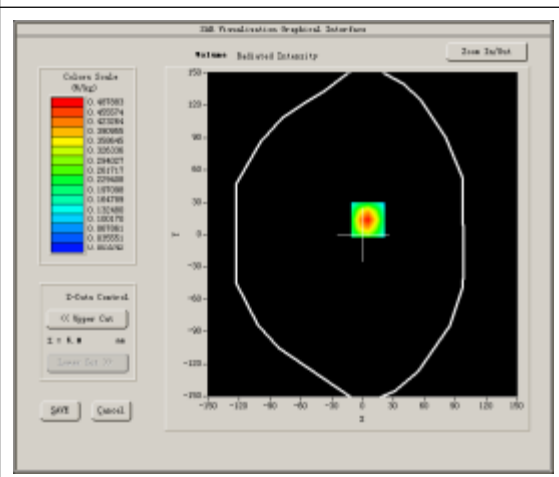
Lower Band SAR (Channel 1312):

Frequency (MHz)	1712.400000
Relative permittivity (real part)	53.510000
Conductivity (S/m)	1.470000
Power drift (%)	-0.710000
Ambient Temperature:	22.7°C
Liquid Temperature:	22.3°C
ConvF:	42.982,37.514,41.835
Crest factor:	1:1

SURFACE SAR



VOLUME SAR



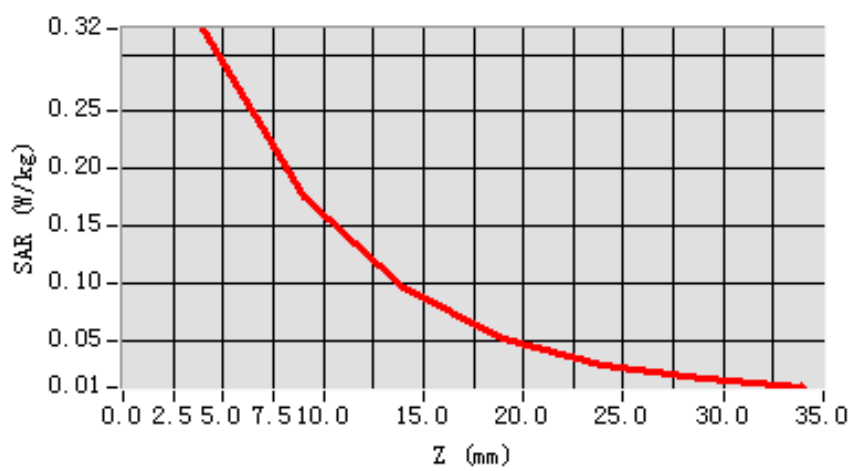
Maximum location: X=2.00, Y=10.00

SAR 10g (W/Kg)	0.168151
SAR 1g (W/Kg)	0.305396

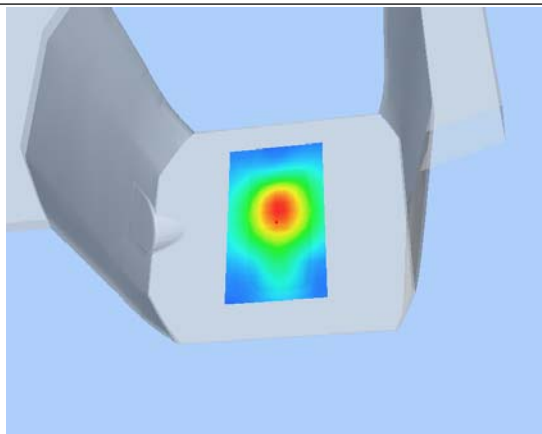
Z Axis Scan

Z (mm)	0.00	4.00	9.00	14.00	19.00	24.00	29.00
SAR (W/Kg)	0.0000	0.3222	0.1757	0.0969	0.0531	0.0296	0.0172

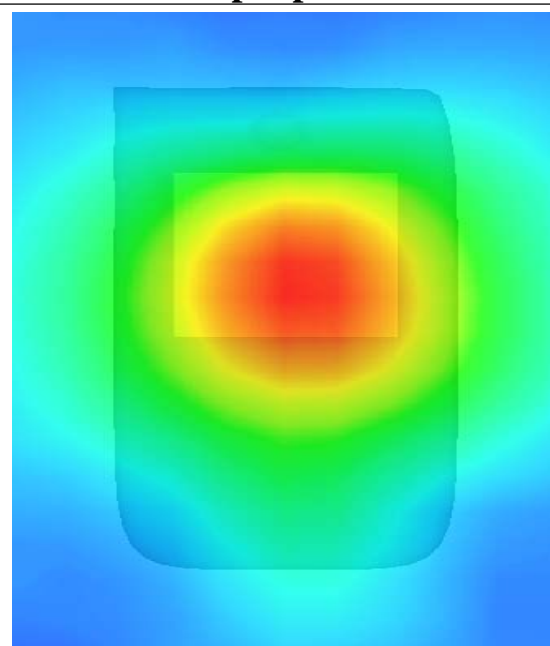
SAR, Z Axis Scan (X = 2, Y = 10)



3D scen shot



Hot spot position



MEASUREMENT 22

Type: Phone measurement (Complete)

Area scan resolution: dx=8mm,dy=8mm

Zoom scan resolution: dx=8mm, dy=8mm, dz=5mm

Date of measurement: 2013.7.10

Measurement duration: 9 minutes 14 seconds

A. Experimental conditions.

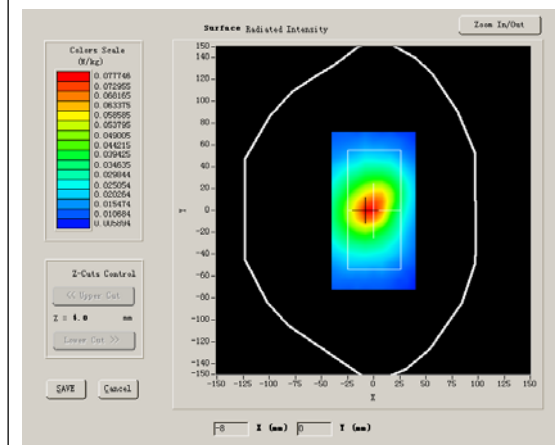
Phantom File	surf_sam_plan.txt
Phantom	Validation plane
Device Position	Body
Band	WCDMA1700
Channels	Low
Signal	CDMA

B. SAR Measurement Results

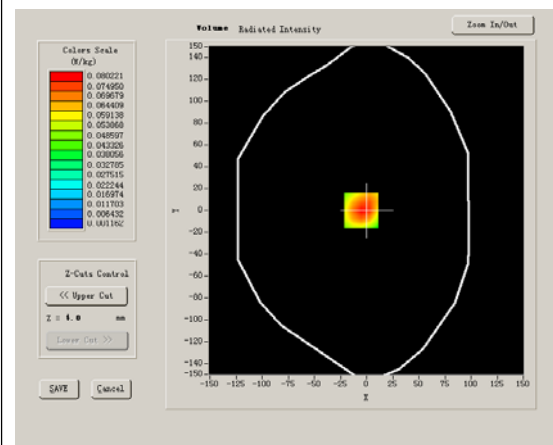
Lower Band SAR (Channel 1312):

Frequency (MHz)	1712.400000
Relative permittivity (real part)	53.510000
Conductivity (S/m)	1.470000
Power drift (%)	-0.650000
Ambient Temperature:	22.7°C
Liquid Temperature:	22.3°C
ConvF:	42.982,37.514,41.835
Crest factor:	1:1

SURFACE SAR



VOLUME SAR



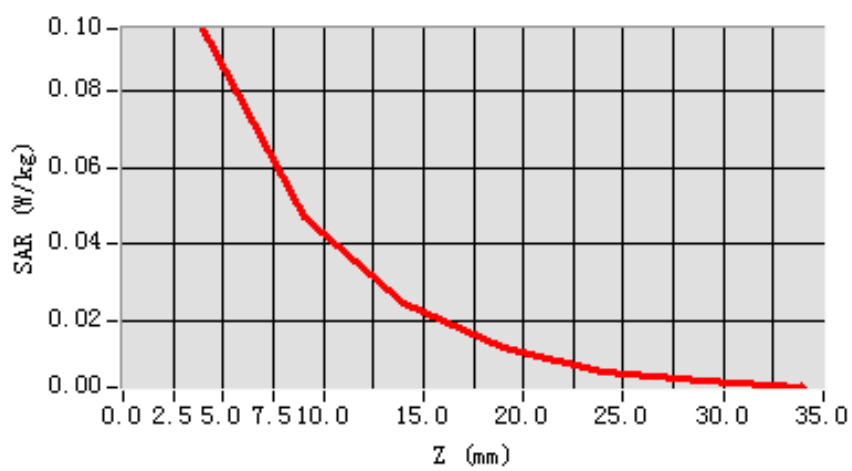
Maximum location: X=-5.00, Y=0.00

SAR 10g (W/Kg)	0.050930
SAR 1g (W/Kg)	0.093437

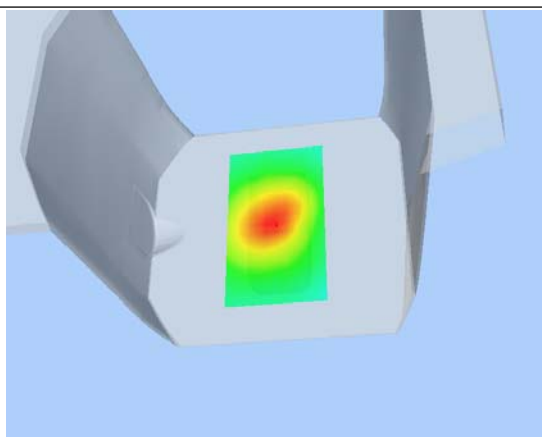
Z Axis Scan

Z (mm)	0.00	4.00	9.00	14.00	19.00	24.00	29.00
SAR (W/Kg)	0.0000	0.0963	0.0471	0.0244	0.0128	0.0068	0.0043

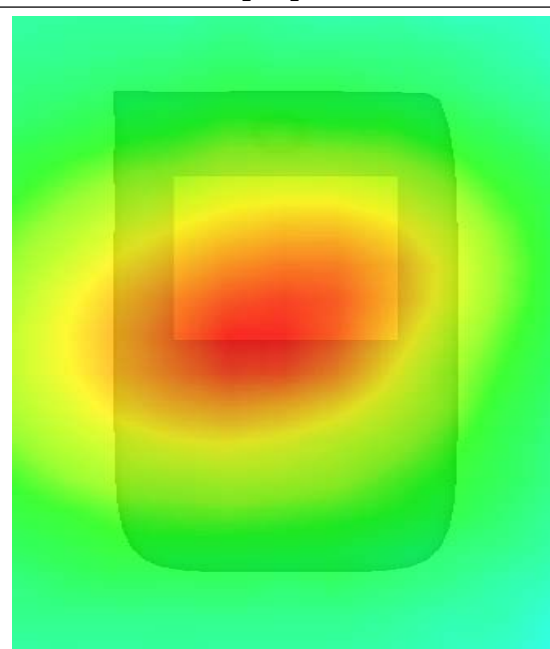
SAR, Z Axis Scan (X = -5, Y = 0)



3D scen shot



Hot spot position



MEASUREMENT 23

Type: Phone measurement (Complete)

Area scan resolution: dx=8mm,dy=8mm

Zoom scan resolution: dx=8mm, dy=8mm, dz=5mm

Date of measurement: 2013.7.11

Measurement duration: 9 minutes 7 seconds

A. Experimental conditions.

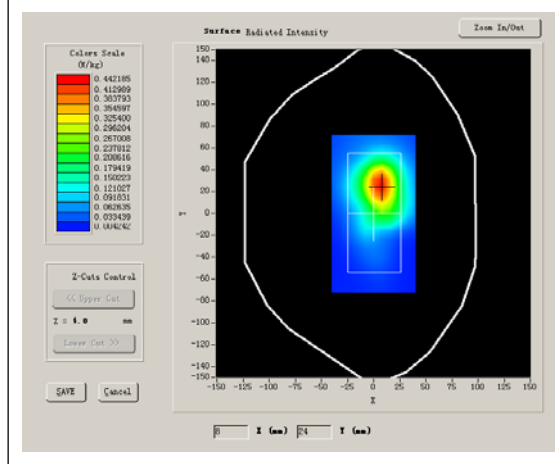
Phantom File	surf_sam_plan.txt
Phantom	Validation plane
Device Position	Body
Band	WCDMA1900
Channels	Low
Signal	CDMA

B. SAR Measurement Results

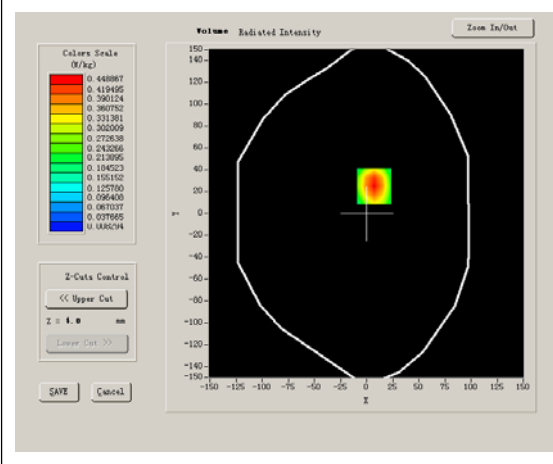
Lower Band SAR (Channel 9262):

Frequency (MHz)	1852.400000
Relative permittivity (real part)	53.210000
Conductivity (S/m)	1.510000
Power drift (%)	-0.360000
Ambient Temperature:	22.7°C
Liquid Temperature:	22.3°C
ConvF:	40.625,34.773,38.535
Crest factor:	1:1

SURFACE SAR



VOLUME SAR



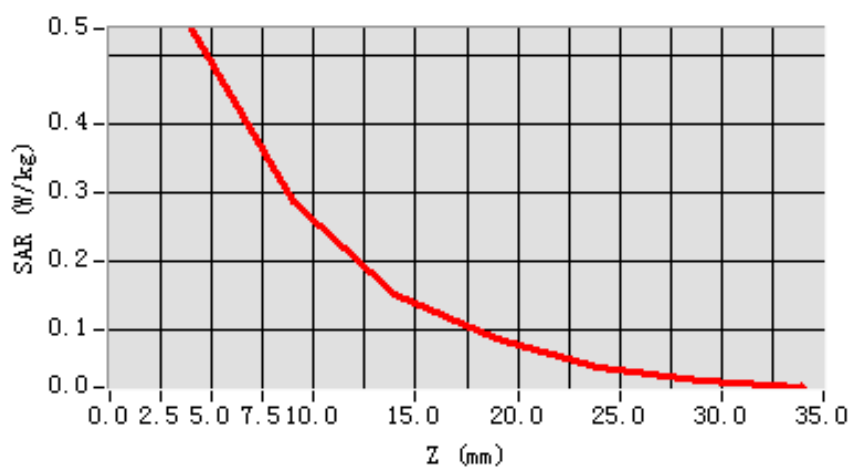
Maximum location: X=7.00, Y=25.00

SAR 10g (W/Kg)	0.276677
SAR 1g (W/Kg)	0.510967

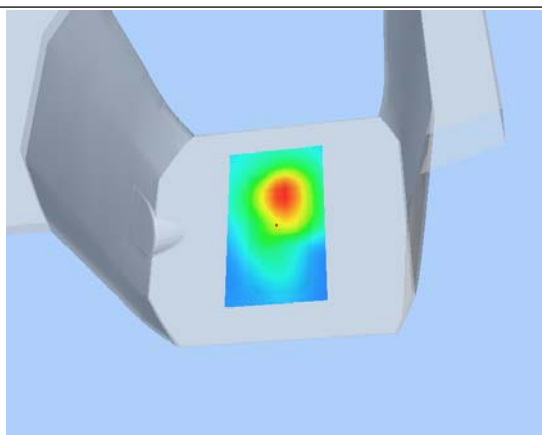
Z Axis Scan

Z (mm)	0.00	4.00	9.00	14.00	19.00	24.00	29.00
SAR (W/Kg)	0.0000	0.5387	0.2879	0.1531	0.0859	0.0465	0.0272

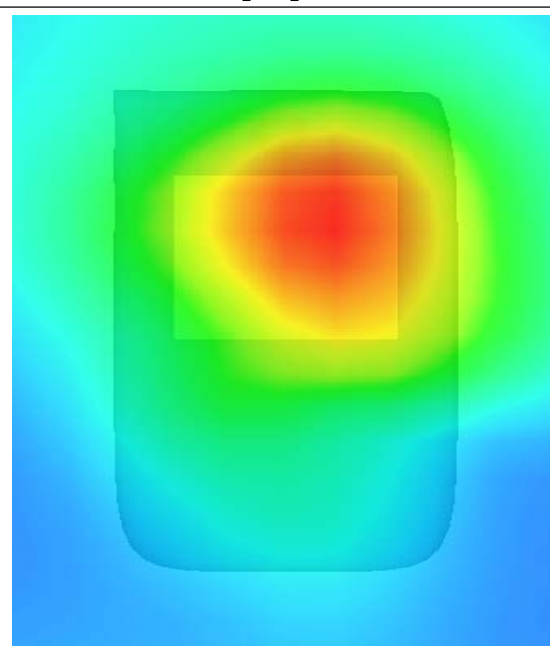
SAR, Z Axis Scan (X = 7, Y = 25)



3D scen shot



Hot spot position



MEASUREMENT 24

Type: Phone measurement (Complete)

Area scan resolution: dx=8mm,dy=8mm

Zoom scan resolution: dx=8mm, dy=8mm, dz=5mm

Date of measurement: 2013.7.11

Measurement duration: 9 minutes 14 seconds

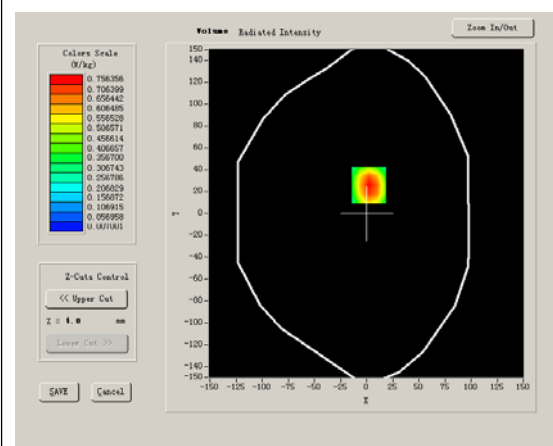
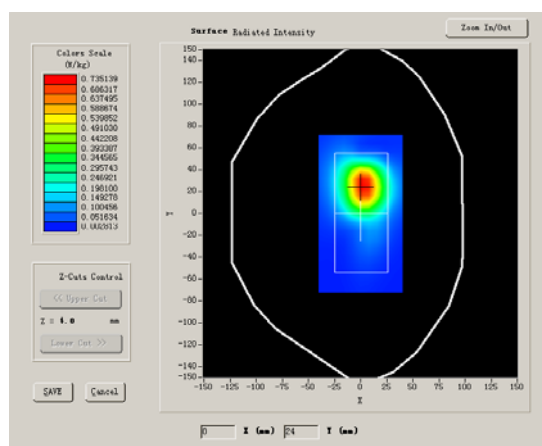
A. Experimental conditions.

Phantom File	surf_sam_plan.txt
Phantom	Validation plane
Device Position	Body
Band	WCDMA1900
Channels	Low
Signal	CDMA

B. SAR Measurement Results

Lower Band SAR (Channel 9262):

Frequency (MHz)	1852.400000
Relative permittivity (real part)	53.210000
Conductivity (S/m)	1.510000
Power drift (%)	-0.270000
Ambient Temperature:	22.7°C
Liquid Temperature:	22.3°C
ConvF:	40.625,34.773,38.535
Crest factor:	1:1
SURFACE SAR	VOLUME SAR



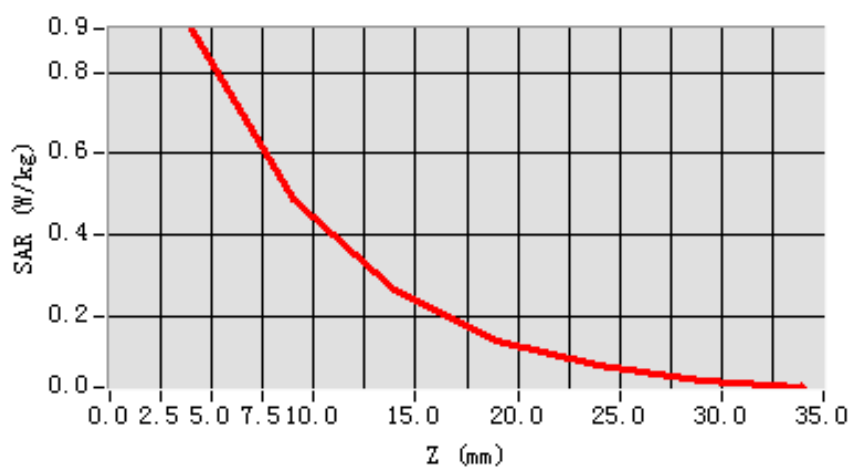
Maximum location: X=2.00, Y=26.00

SAR 10g (W/Kg)	0.470173
SAR 1g (W/Kg)	0.865349

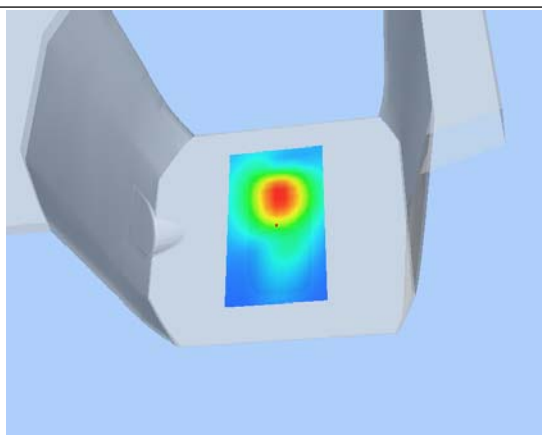
Z Axis Scan

Z (mm)	0.00	4.00	9.00	14.00	19.00	24.00	29.00
SAR (W/Kg)	0.0000	0.9077	0.4897	0.2637	0.1413	0.0784	0.0429

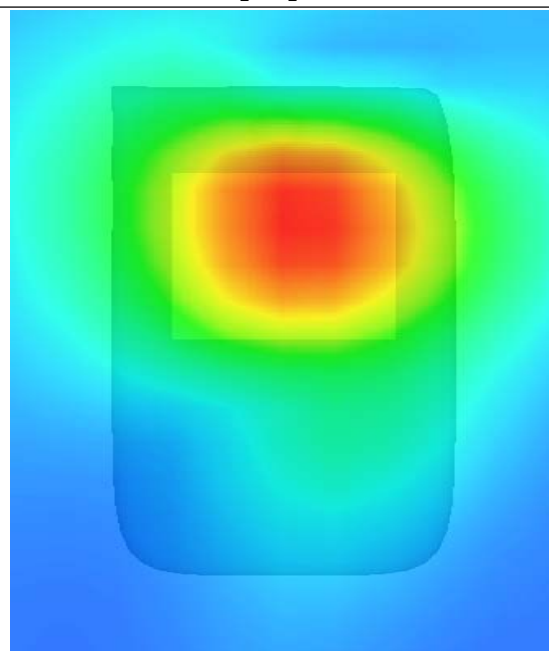
SAR, Z Axis Scan (X = 2, Y = 26)



3D scen shot



Hot spot position



MEASUREMENT 25

Type: Phone measurement (Complete)

Area scan resolution: dx=8mm,dy=8mm

Zoom scan resolution: dx=8mm, dy=8mm, dz=5mm

Date of measurement: 2013.7.11

Measurement duration: 9 minutes 14 seconds

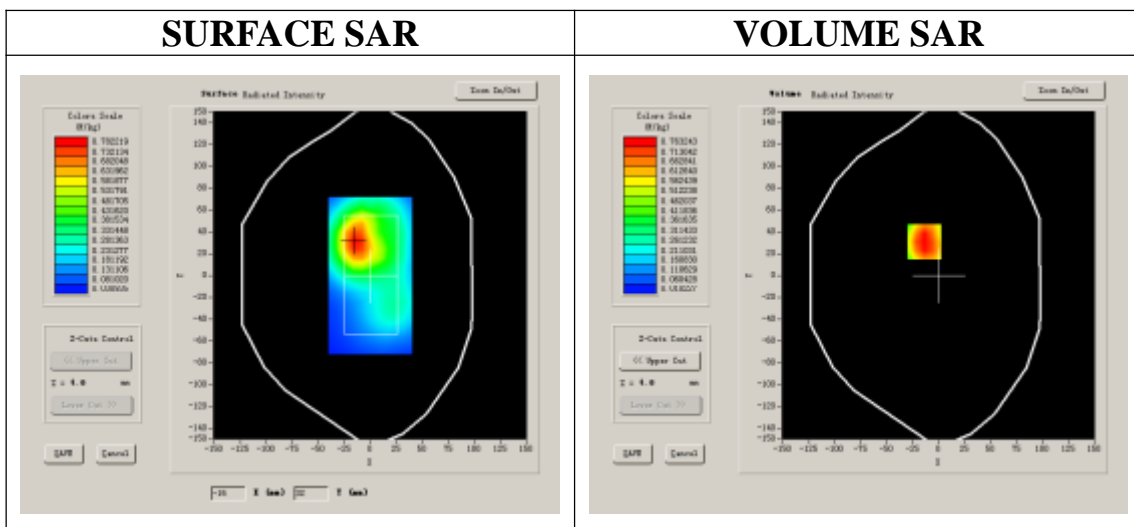
A. Experimental conditions.

Phantom File	surf_sam_plan.txt
Phantom	Validation plane
Device Position	Body
Band	WCDMA1900
Channels	Middle
Signal	CDMA

B. SAR Measurement Results

Middle Band SAR (Channel 9400):

Frequency (MHz)	1880.000000
Relative permittivity (real part)	53.210000
Conductivity (S/m)	1.510000
Power drift (%)	-0.280000
Ambient Temperature:	22.7°C
Liquid Temperature:	22.3°C
ConvF:	40.625,34.773,38.535
Crest factor:	1:1



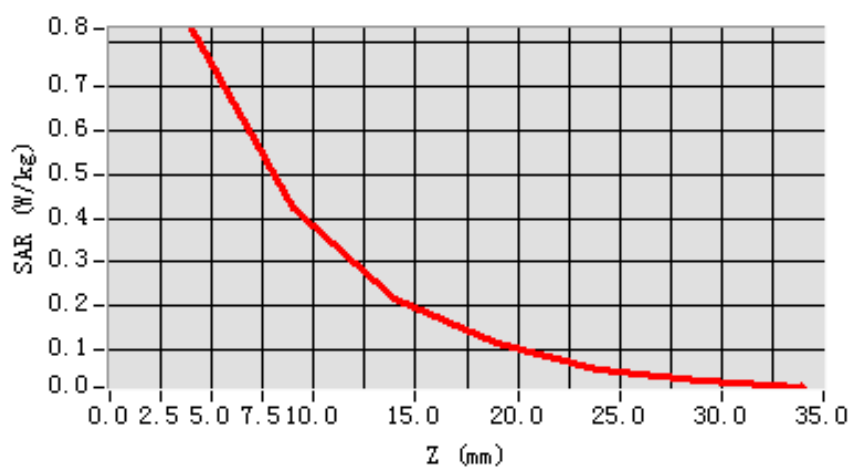
Maximum location: X=-14.00, Y=31.00

SAR 10g (W/Kg)	0.436624
SAR 1g (W/Kg)	0.798681

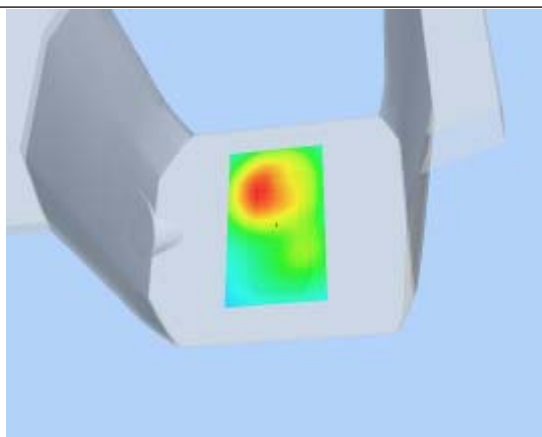
Z Axis Scan

Z (mm)	0.00	4.00	9.00	14.00	19.00	24.00	29.00
SAR (W/Kg)	0.0000	0.8311	0.4237	0.2171	0.1141	0.0578	0.0310

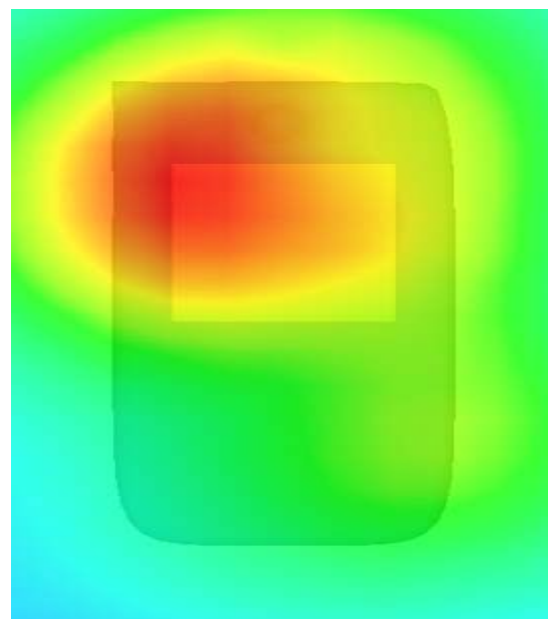
SAR, Z Axis Scan (X = -14, Y = 31)



3D scen shot



Hot spot position



MEASUREMENT 26

Type: Phone measurement (Complete)

Area scan resolution: dx=8mm,dy=8mm

Zoom scan resolution: dx=8mm, dy=8mm, dz=5mm

Date of measurement: 2013.7.11

Measurement duration: 9 minutes 14 seconds

A. Experimental conditions.

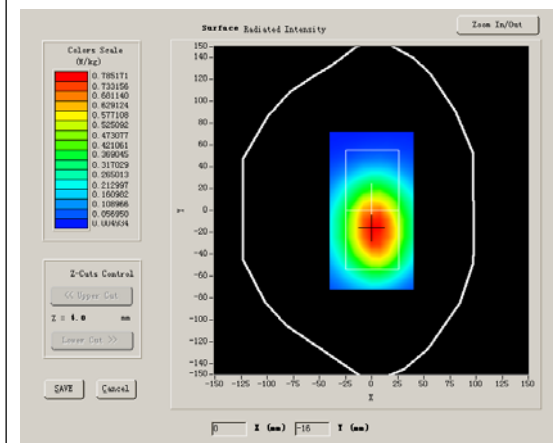
Phantom File	surf_sam_plan.txt
Phantom	Validation plane
Device Position	Body
Band	WCDMA1900
Channels	High
Signal	CDMA

B. SAR Measurement Results

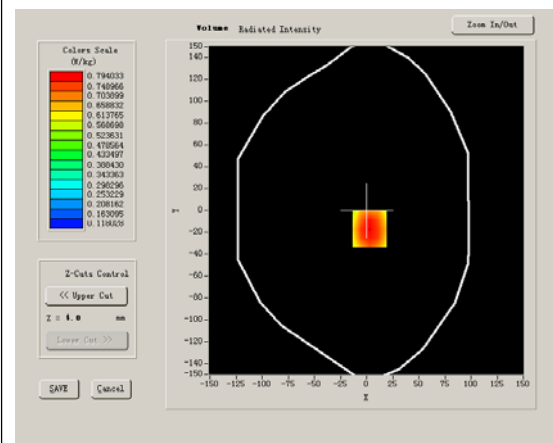
Higher Band SAR (Channel 9538):

Frequency (MHz)	1907.600000
Relative permittivity (real part)	53.210000
Conductivity (S/m)	1.510000
Power drift (%)	-0.460000
Ambient Temperature:	22.7°C
Liquid Temperature:	22.3°C
ConvF:	40.625,34.773,38.535
Crest factor:	1:1

SURFACE SAR



VOLUME SAR



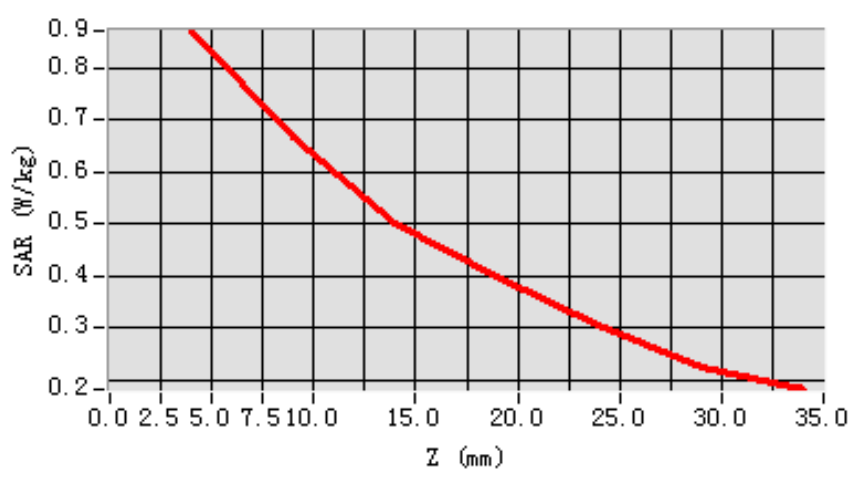
Maximum location: X=3.00, Y=-17.00

SAR 10g (W/Kg)	0.615357
SAR 1g (W/Kg)	0.847260

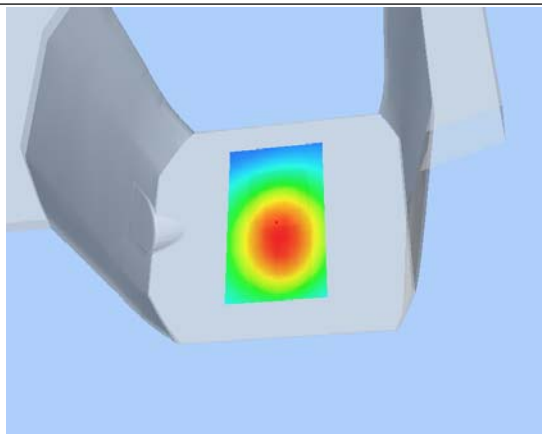
Z Axis Scan

Z (mm)	0.00	4.00	9.00	14.00	19.00	24.00	29.00
SAR (W/Kg)	0.0000	0.8717	0.6675	0.5019	0.4001	0.3059	0.2242

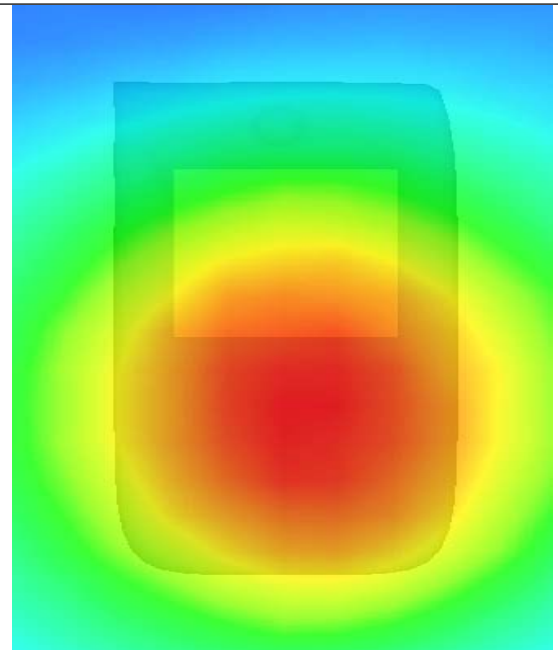
SAR, Z Axis Scan (X = 3, Y = -17)



3D scen shot



Hot spot position



MEASUREMENT 27

Type: Phone measurement (Complete)

Area scan resolution: dx=8mm,dy=8mm

Zoom scan resolution: dx=8mm, dy=8mm, dz=5mm

Date of measurement: 2013.7.11

Measurement duration: 9 minutes 14 seconds

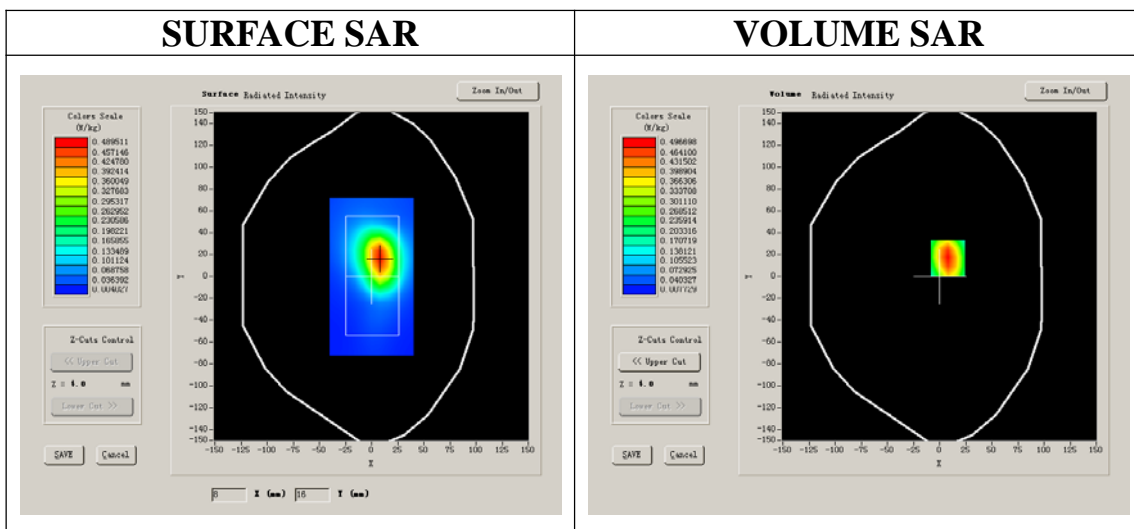
A. Experimental conditions.

Phantom File	surf_sam_plan.txt
Phantom	Validation plane
Device Position	Body
Band	WCDMA1900
Channels	Low
Signal	CDMA

B. SAR Measurement Results

Lower Band SAR (Channel 9262):

Frequency (MHz)	1852.400000
Relative permittivity (real part)	53.210000
Conductivity (S/m)	1.510000
Power drift (%)	-0.320000
Ambient Temperature:	22.7°C
Liquid Temperature:	22.3°C
ConvF:	40.625,34.773,38.535
Crest factor:	1:1



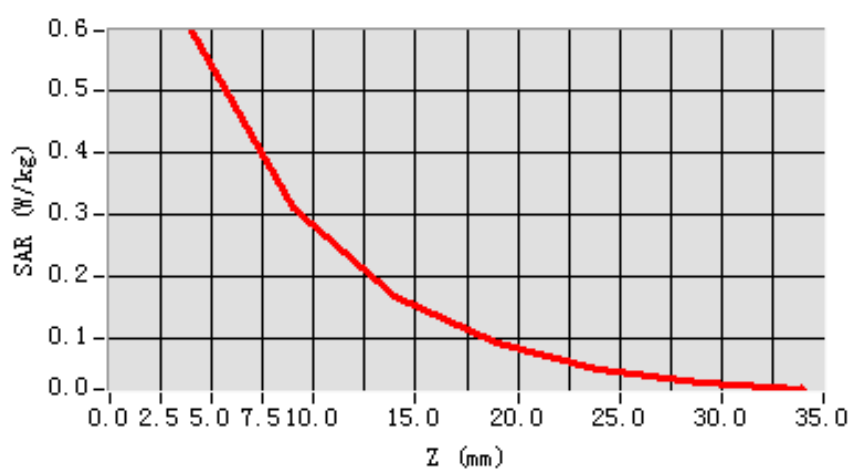
Maximum location: X=8.00, Y=17.00

SAR 10g (W/Kg)	0.298439
SAR 1g (W/Kg)	0.560015

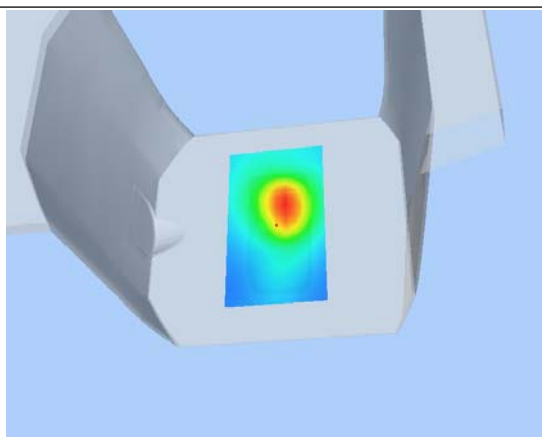
Z Axis Scan

Z (mm)	0.00	4.00	9.00	14.00	19.00	24.00	29.00
SAR (W/Kg)	0.0000	0.5961	0.3101	0.1677	0.0907	0.0510	0.0290

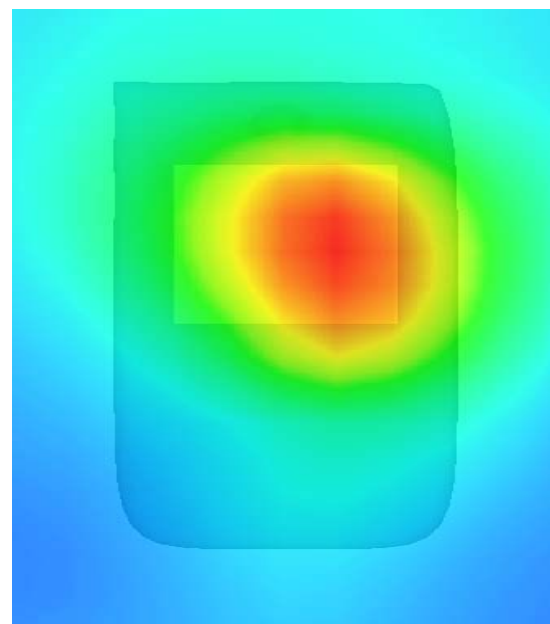
SAR, Z Axis Scan (X = 8, Y = 17)



3D scen shot



Hot spot position



MEASUREMENT 28

Type: Phone measurement (Complete)

Area scan resolution: dx=8mm,dy=8mm

Zoom scan resolution: dx=8mm, dy=8mm, dz=5mm

Date of measurement: 2013.7.11

Measurement duration: 9 minutes 14 seconds

A. Experimental conditions.

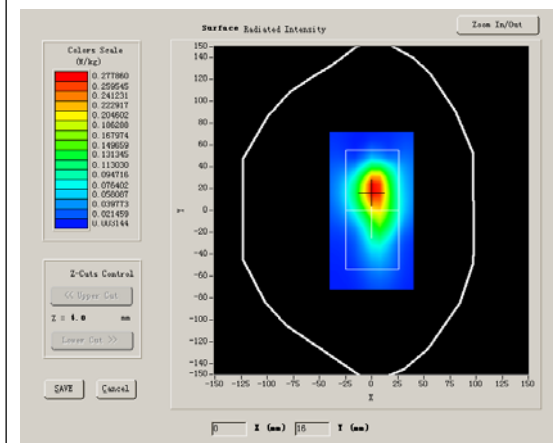
Phantom File	surf_sam_plan.txt
Phantom	Validation plane
Device Position	Body
Band	WCDMA1900
Channels	Low
Signal	CDMA

B. SAR Measurement Results

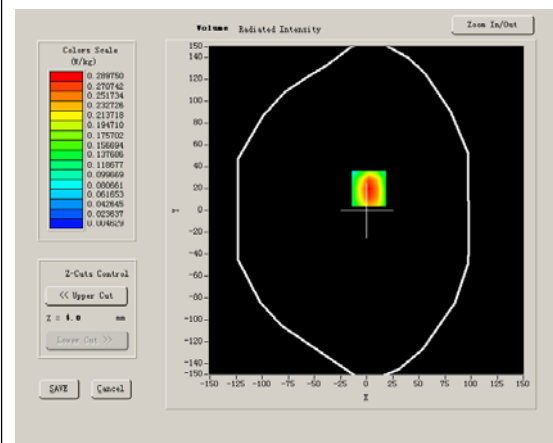
Lower Band SAR (Channel 9262):

Frequency (MHz)	1852.400000
Relative permittivity (real part)	53.210000
Conductivity (S/m)	1.510000
Power drift (%)	-0.710000
Ambient Temperature:	22.7°C
Liquid Temperature:	22.3°C
ConvF:	40.625,34.773,38.535
Crest factor:	1:1

SURFACE SAR



VOLUME SAR



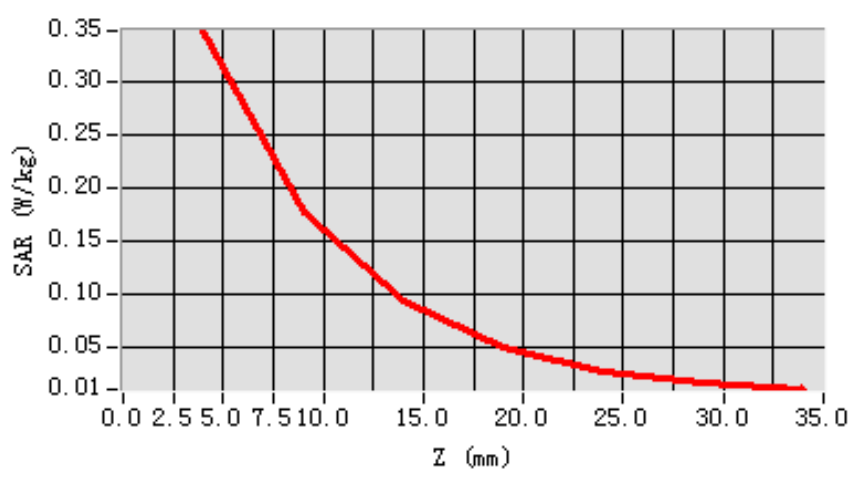
Maximum location: X=2.00, Y=20.00

SAR 10g (W/Kg)	0.173935
SAR 1g (W/Kg)	0.329720

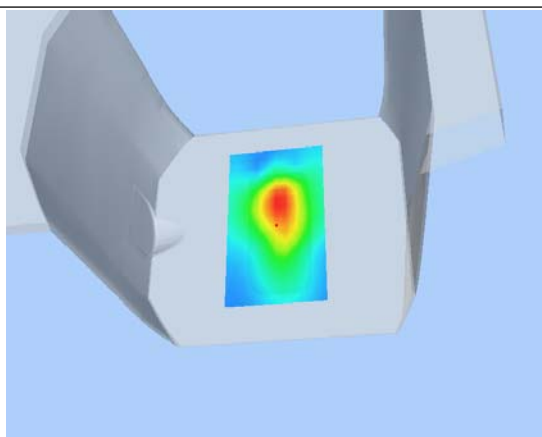
Z Axis Scan

Z (mm)	0.00	4.00	9.00	14.00	19.00	24.00	29.00
SAR (W/Kg)	0.0000	0.3477	0.1771	0.0922	0.0489	0.0265	0.0156

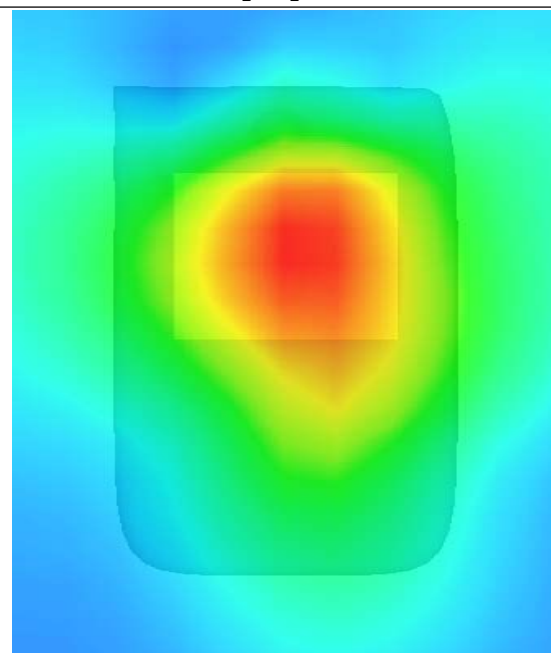
SAR, Z Axis Scan (X = 2, Y = 20)



3D scen shot



Hot spot position



MEASUREMENT 29

Type: Phone measurement (Complete)

Area scan resolution: dx=8mm,dy=8mm

Zoom scan resolution: dx=8mm, dy=8mm, dz=5mm

Date of measurement: 2013.7.11

Measurement duration: 9 minutes 14 seconds

A. Experimental conditions.

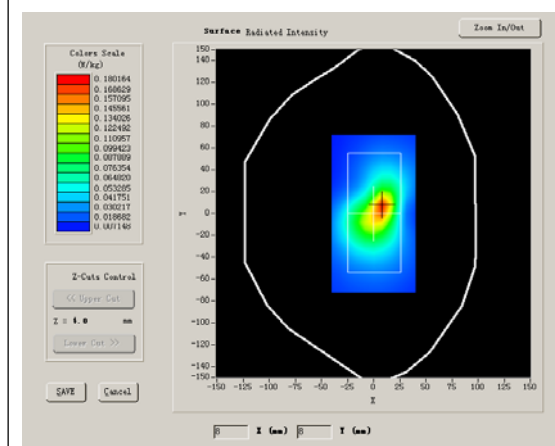
Phantom File	surf_sam_plan.txt
Phantom	Validation plane
Device Position	Body
Band	WCDMA1900
Channels	Low
Signal	CDMA

B. SAR Measurement Results

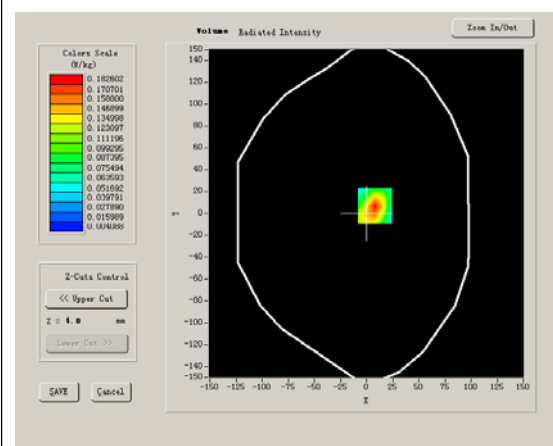
Lower Band SAR (Channel 9262):

Frequency (MHz)	1852.400000
Relative permittivity (real part)	53.210000
Conductivity (S/m)	1.510000
Power drift (%)	-0.650000
Ambient Temperature:	22.7°C
Liquid Temperature:	22.3°C
ConvF:	40.625,34.773,38.535
Crest factor:	1:1

SURFACE SAR



VOLUME SAR



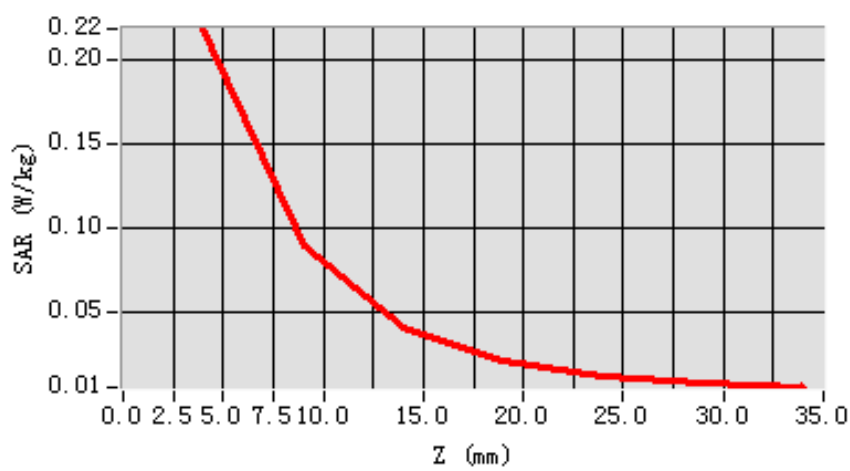
Maximum location: X=8.00, Y=7.00

SAR 10g (W/Kg)	0.098680
SAR 1g (W/Kg)	0.204476

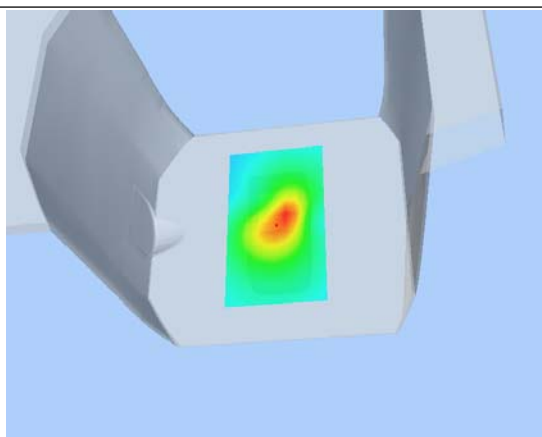
Z Axis Scan

Z (mm)	0.00	4.00	9.00	14.00	19.00	24.00	29.00
SAR (W/Kg)	0.0000	0.2191	0.0904	0.0410	0.0209	0.0120	0.0073

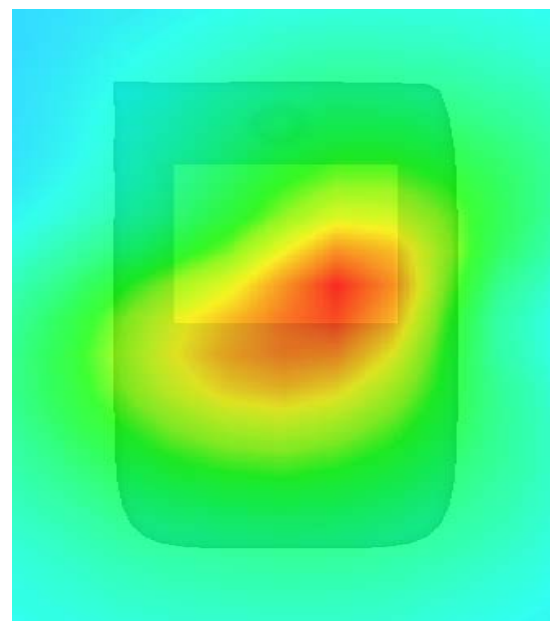
SAR, Z Axis Scan (X = 8, Y = 7)



3D scen shot



Hot spot position



MEASUREMENT 30

Type: Phone measurement (Complete)

Area scan resolution: dx=8mm,dy=8mm

Zoom scan resolution: dx=5mm, dy=5mm, dz=5mm

Date of measurement: 2013.7.12

Measurement duration: 9 minutes 10 seconds

A. Experimental conditions.

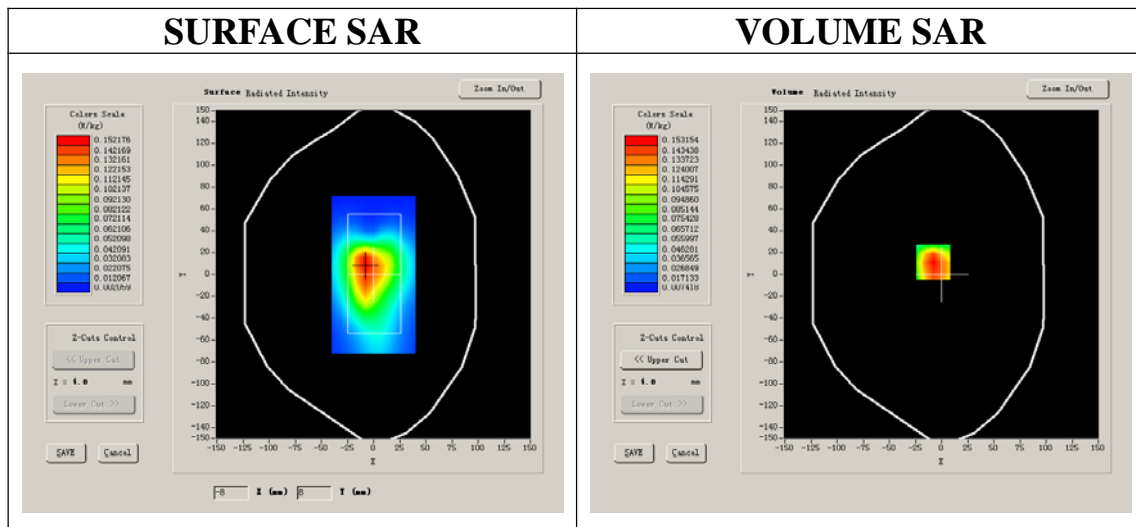
Phantom File	surf_sam_plan.txt
Phantom	Validation plane
Device Position	Body
Band	802.11B
Channels	High
Signal	DSSS

B. SAR Measurement Results

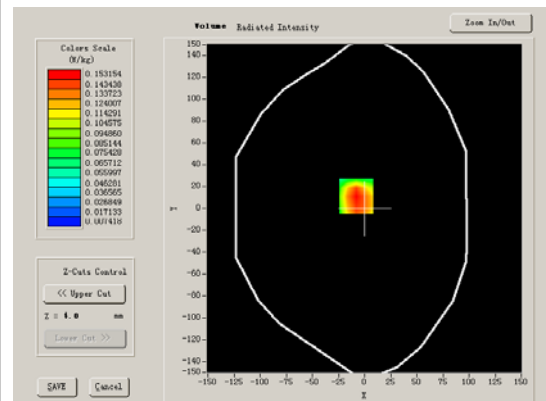
High Band SAR (Channel 11)

Frequency (MHz)	2462.000000
Relative permittivity (real part)	52.490000
Conductivity (S/m)	1.900000
Power drift (%)	-1.710000
Ambient Temperature:	22.0°C
Liquid Temperature:	21.8°C
ConvF:	39.772,33.946,37.835
Crest factor:	1:1

SURFACE SAR



VOLUME SAR



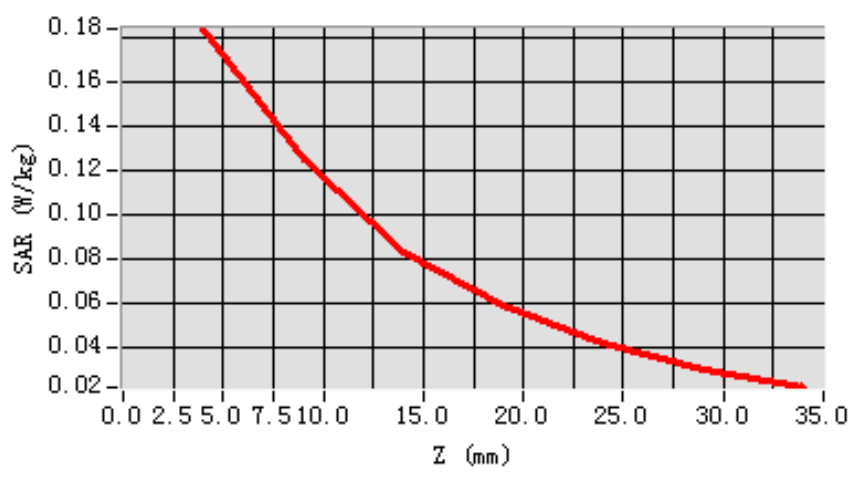
Maximum location: X=-8.00, Y=11.00

SAR 10g (W/Kg)	0.113989
SAR 1g (W/Kg)	0.174391

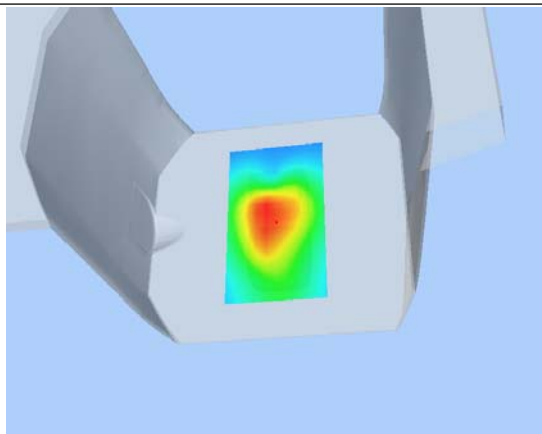
Z Axis Scan

Z (mm)	0.00	4.00	9.00	14.00	19.00	24.00	29.00
SAR (W/Kg)	0.0000	0.1838	0.1253	0.0833	0.0592	0.0419	0.0301

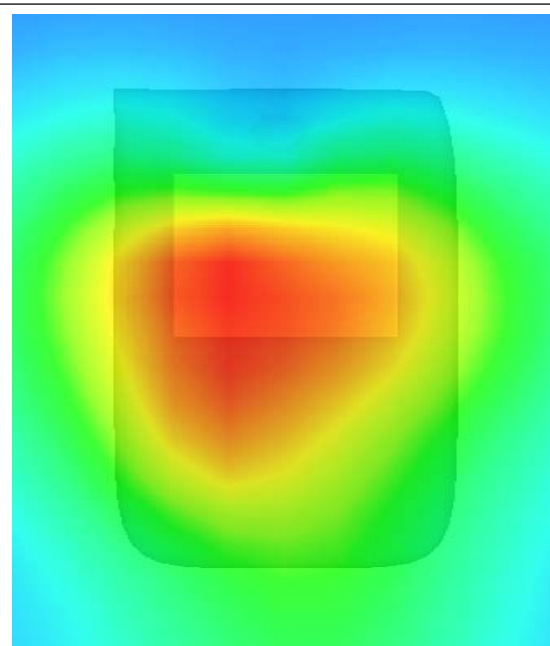
SAR, Z Axis Scan (X = -8, Y = 11)



3D scen shot



Hot spot position



MEASUREMENT 31

Type: Phone measurement (Complete)

Area scan resolution: dx=8mm,dy=8mm

Zoom scan resolution: dx=5mm, dy=5mm, dz=5mm

Date of measurement: 2013.7.12

Measurement duration: 9 minutes 10 seconds

A. Experimental conditions.

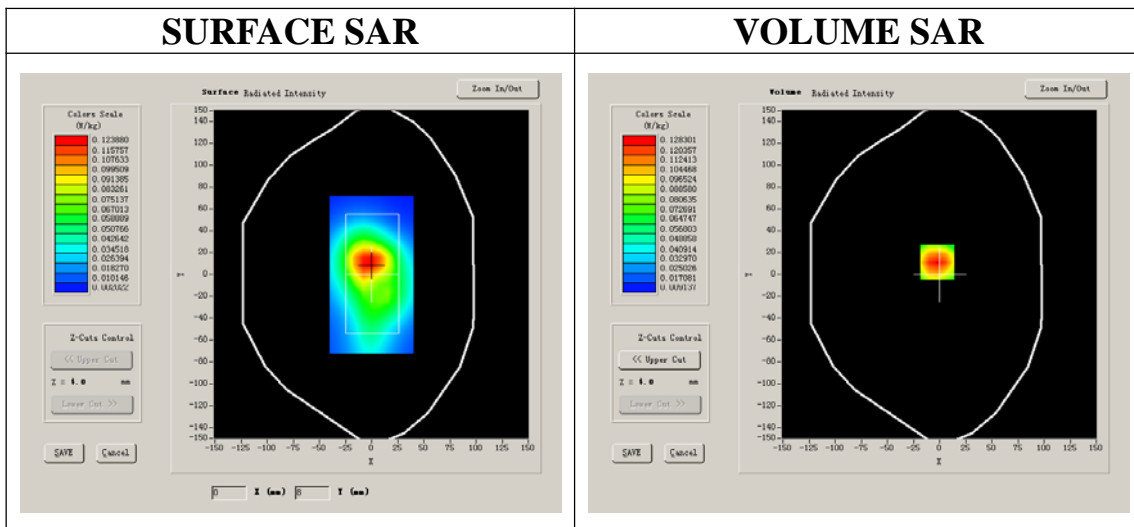
Phantom File	surf_sam_plan.txt
Phantom	Validation plane
Device Position	Body
Band	802.11B
Channels	High
Signal	DSSS

B. SAR Measurement Results

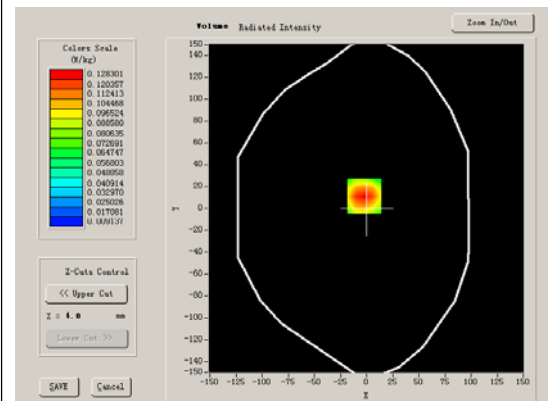
Higher Band SAR (Channel 11)

Frequency (MHz)	2462.000000
Relative permittivity (real part)	52.490000
Conductivity (S/m)	1.900000
Power drift (%)	-1.320000
Ambient Temperature:	22.0°C
Liquid Temperature:	21.8°C
ConvF:	39.772,33.946,37.835
Crest factor:	1:1

SURFACE SAR



VOLUME SAR



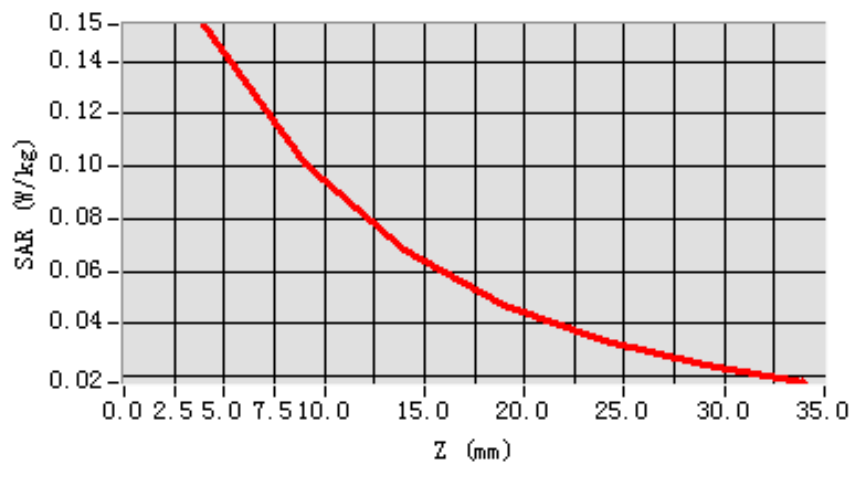
Maximum location: X=-2.00, Y=11.00

SAR 10g (W/Kg)	0.094157
SAR 1g (W/Kg)	0.147024

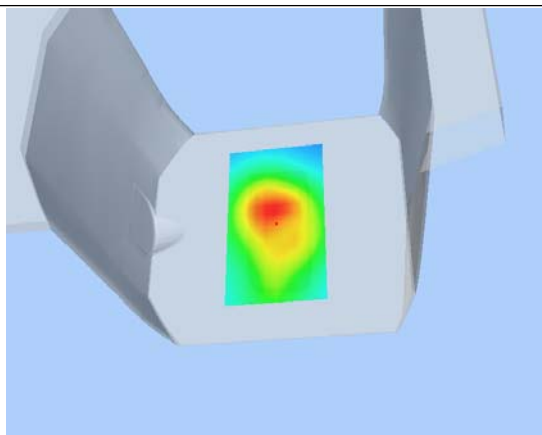
Z Axis Scan

Z (mm)	0.00	4.00	9.00	14.00	19.00	24.00	29.00
SAR (W/Kg)	0.0000	0.1540	0.1008	0.0680	0.0472	0.0333	0.0242

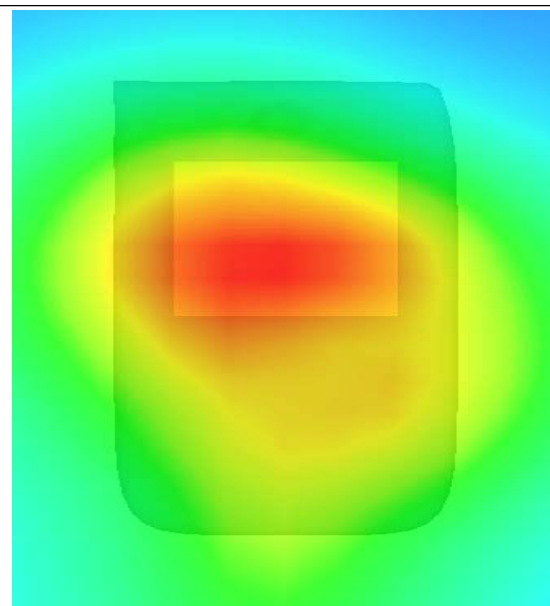
SAR, Z Axis Scan (X = -2, Y = 11)



3D seen shot



Hot spot position



MEASUREMENT 32

Type: Phone measurement (Complete)

Area scan resolution: dx=8mm,dy=8mm

Zoom scan resolution: dx=5mm, dy=5mm, dz=5mm

Date of measurement: 2013.7.12

Measurement duration: 9 minutes 10 seconds

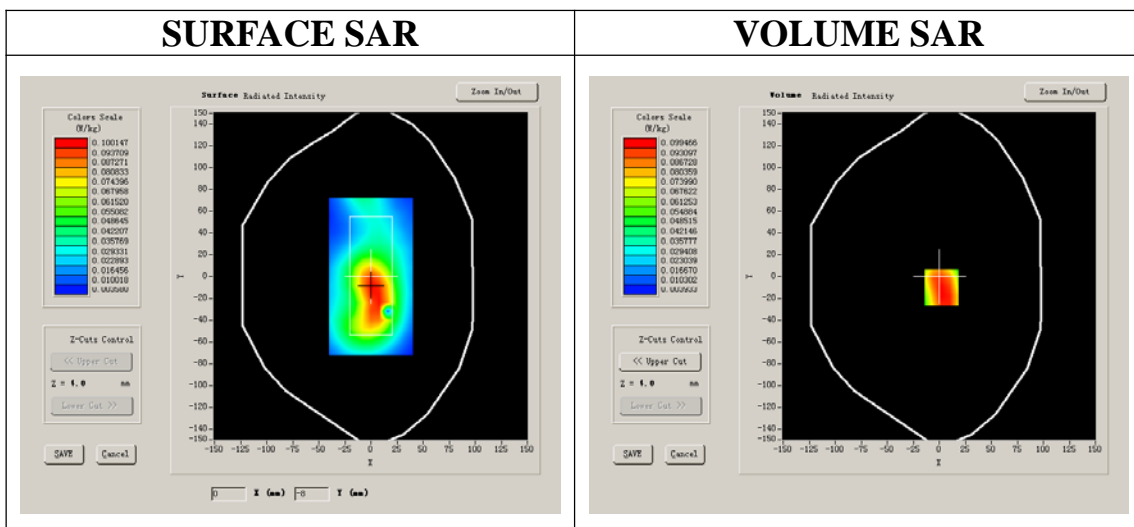
A. Experimental conditions.

Phantom File	surf_sam_plan.txt
Phantom	Validation plane
Device Position	Body
Band	802.11B
Channels	High
Signal	DSSS

B. SAR Measurement Results

Higher Band SAR (Channel 11)

Frequency (MHz)	2462.000000
Relative permittivity (real part)	52.490000
Conductivity (S/m)	1.900000
Power drift (%)	-1.910000
Ambient Temperature:	22.0°C
Liquid Temperature:	21.8°C
ConvF:	39.772,33.946,37.835
Crest factor:	1:1



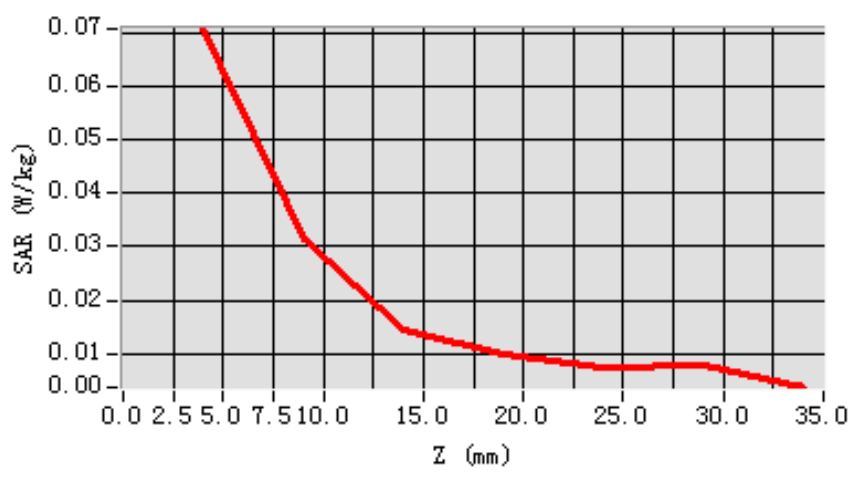
Maximum location: X=-8.00, Y=-1.00

SAR 10g (W/Kg)	0.039495
SAR 1g (W/Kg)	0.074147

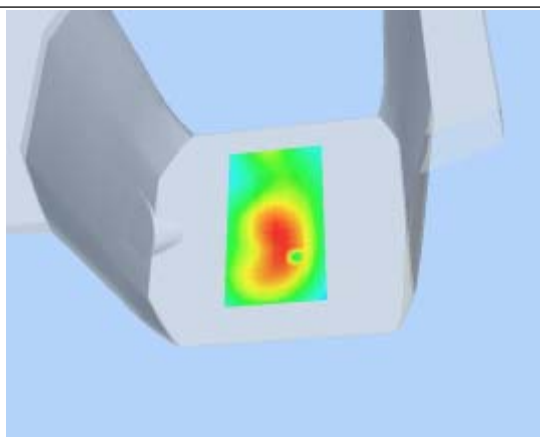
Z Axis Scan

Z (mm)	0.00	4.00	9.00	14.00	19.00	24.00	29.00
SAR (W/Kg)	0.0000	0.0706	0.0314	0.0146	0.0099	0.0073	0.0078

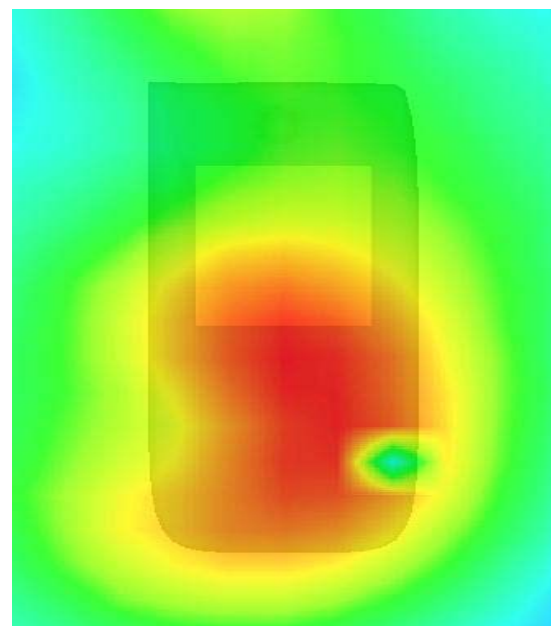
SAR, Z Axis Scan (X = -8, Y = -1)



3D scen shot



Hot spot position



MEASUREMENT 33

Type: Phone measurement (Complete)

Area scan resolution: dx=8mm,dy=8mm

Zoom scan resolution: dx=5mm, dy=5mm, dz=5mm

Date of measurement: 2013.7.12

Measurement duration: 9 minutes 10 seconds

A. Experimental conditions.

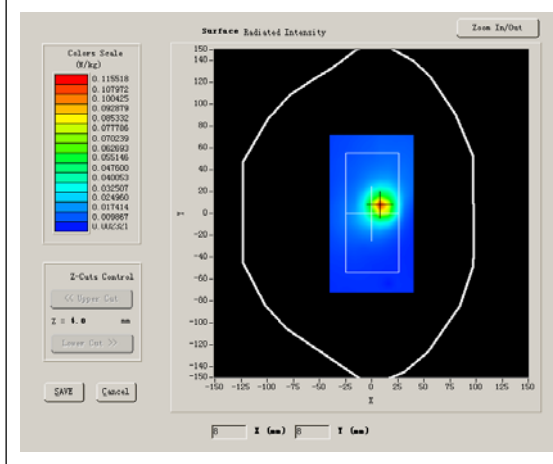
Phantom File	surf_sam_plan.txt
Phantom	Validation plane
Device Position	Body
Band	802.11B
Channels	High
Signal	DSSS

B. SAR Measurement Results

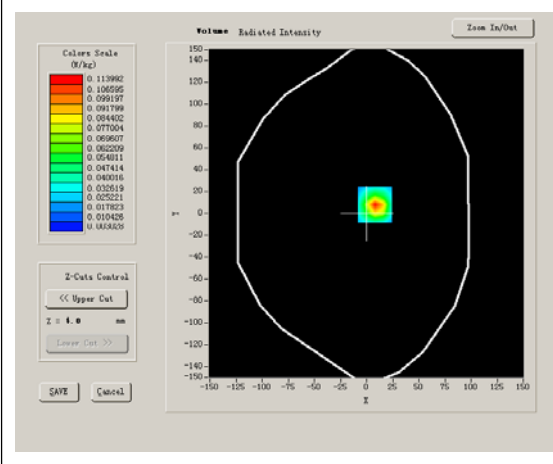
Higher Band SAR (Channel 11)

Frequency (MHz)	2462.000000
Relative permittivity (real part)	52.490000
Conductivity (S/m)	1.900000
Power drift (%)	-1.810000
Ambient Temperature:	22.0°C
Liquid Temperature:	21.8°C
ConvF:	39.772,33.946,37.835
Crest factor:	1:1

SURFACE SAR



VOLUME SAR



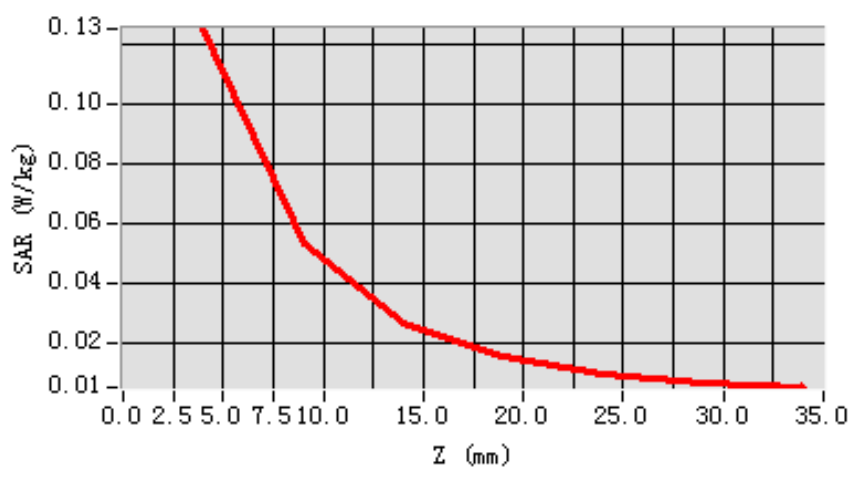
Maximum location: X=8.00, Y=8.00

SAR 10g (W/Kg)	0.050714
SAR 1g (W/Kg)	0.114179

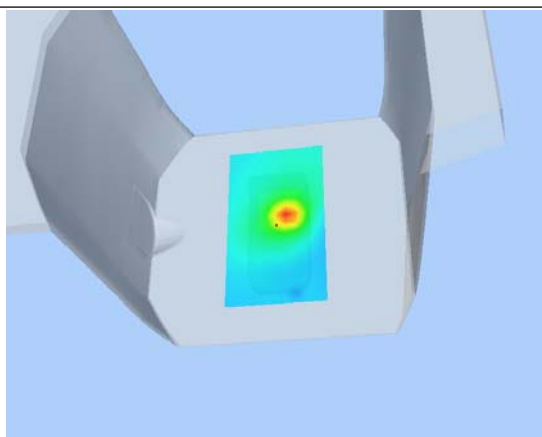
Z Axis Scan

Z (mm)	0.00	4.00	9.00	14.00	19.00	24.00	29.00
SAR (W/Kg)	0.0000	0.1251	0.0537	0.0268	0.0155	0.0099	0.0072

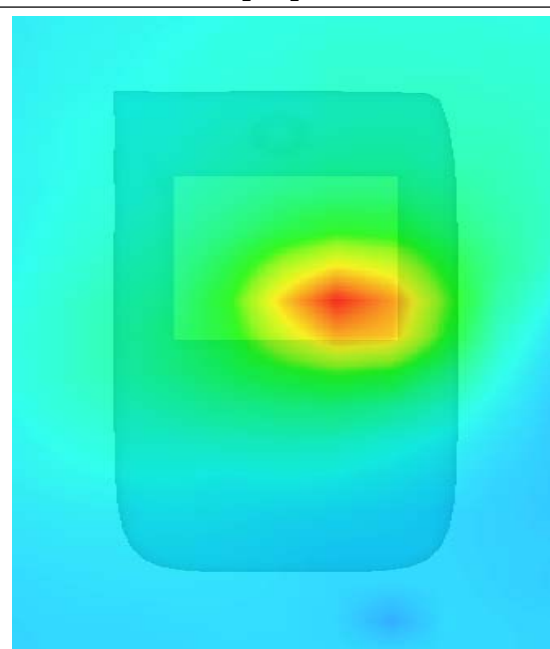
SAR, Z Axis Scan (X = 8, Y = 8)



3D scen shot



Hot spot position



MEASUREMENT 34

Type: Phone measurement (Complete)

Area scan resolution: dx=8mm,dy=8mm

Zoom scan resolution: dx=5mm, dy=5mm, dz=5mm

Date of measurement: 2013.7.12

Measurement duration: 9 minutes 10 seconds

A. Experimental conditions.

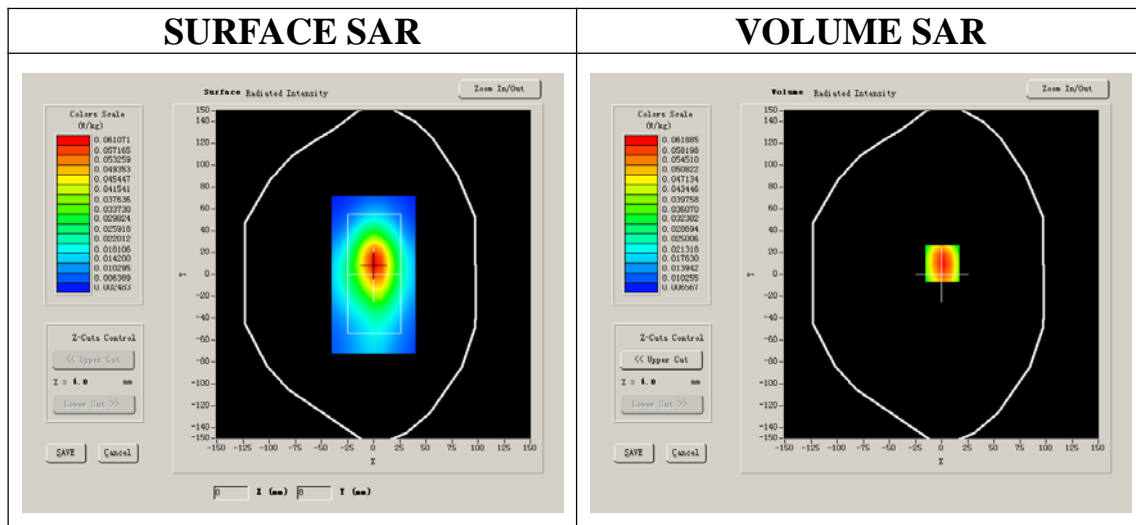
Phantom File	surf_sam_plan.txt
Phantom	Validation plane
Device Position	Body
Band	802.11B
Channels	High
Signal	DSSS

B. SAR Measurement Results

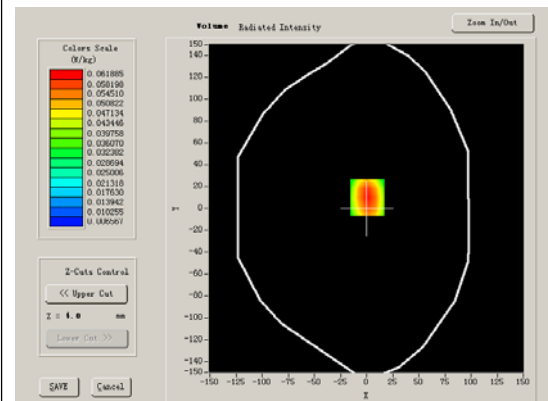
Higher Band SAR (Channel 11)

Frequency (MHz)	2462.000000
Relative permittivity (real part)	52.490000
Conductivity (S/m)	1.900000
Power drift (%)	-0.920000
Ambient Temperature:	22.0°C
Liquid Temperature:	21.8°C
ConvF:	39.772,33.946,37.835
Crest factor:	1:1

SURFACE SAR



VOLUME SAR



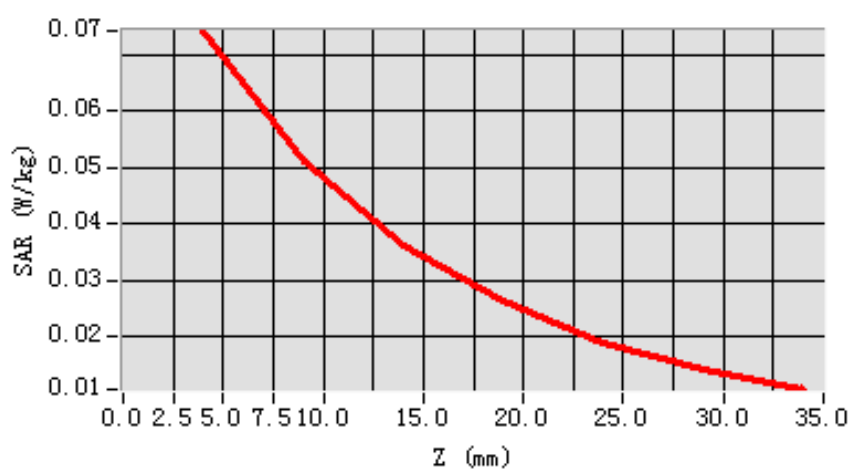
Maximum location: X=1.00, Y=10.00

SAR 10g (W/Kg)	0.046817
SAR 1g (W/Kg)	0.070802

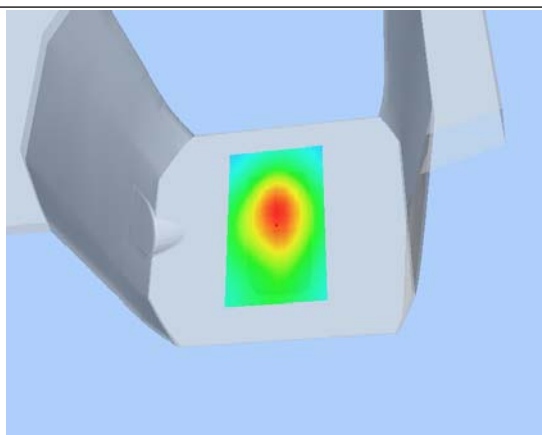
Z Axis Scan

Z (mm)	0.00	4.00	9.00	14.00	19.00	24.00	29.00
SAR (W/Kg)	0.0000	0.0743	0.0513	0.0363	0.0264	0.0191	0.0142

SAR, Z Axis Scan (X = 1, Y = 10)



3D scen shot



Hot spot position

