

WCDMA 1900 Body Rear Low

Date: 2013-7-28

Electronics: DAE4 Sn771

Medium: Body 1900 MHz

Medium parameters used (interpolated): $f = 1852.4$ MHz; $\sigma = 1.489$ mho/m; $\epsilon_r = 52.43$; $\rho = 1000$ kg/m³

Ambient Temperature: 22.7°C Liquid Temperature: 22.2°C

Communication System: WCDMA 1900 Frequency: 1852.4 MHz Duty Cycle: 1:1

Probe: EX3DV4 - SN3846 ConvF(7.37, 7.37, 7.37)

Rear Low/Area Scan (61x111x1): Interpolated grid: dx=1.000 mm, dy=1.000 mm

Maximum value of SAR (interpolated) = 0.884 W/kg

Rear Low/Zoom Scan (7x7x7)/Cube 0: Measurement grid: dx=5mm, dy=5mm, dz=5mm

Reference Value = 15.234 V/m; Power Drift = 0.12 dB

Peak SAR (extrapolated) = 1.30 W/kg

SAR(1 g) = 0.872 W/kg; SAR(10 g) = 0.559 W/kg

Maximum value of SAR (measured) = 0.939 W/kg

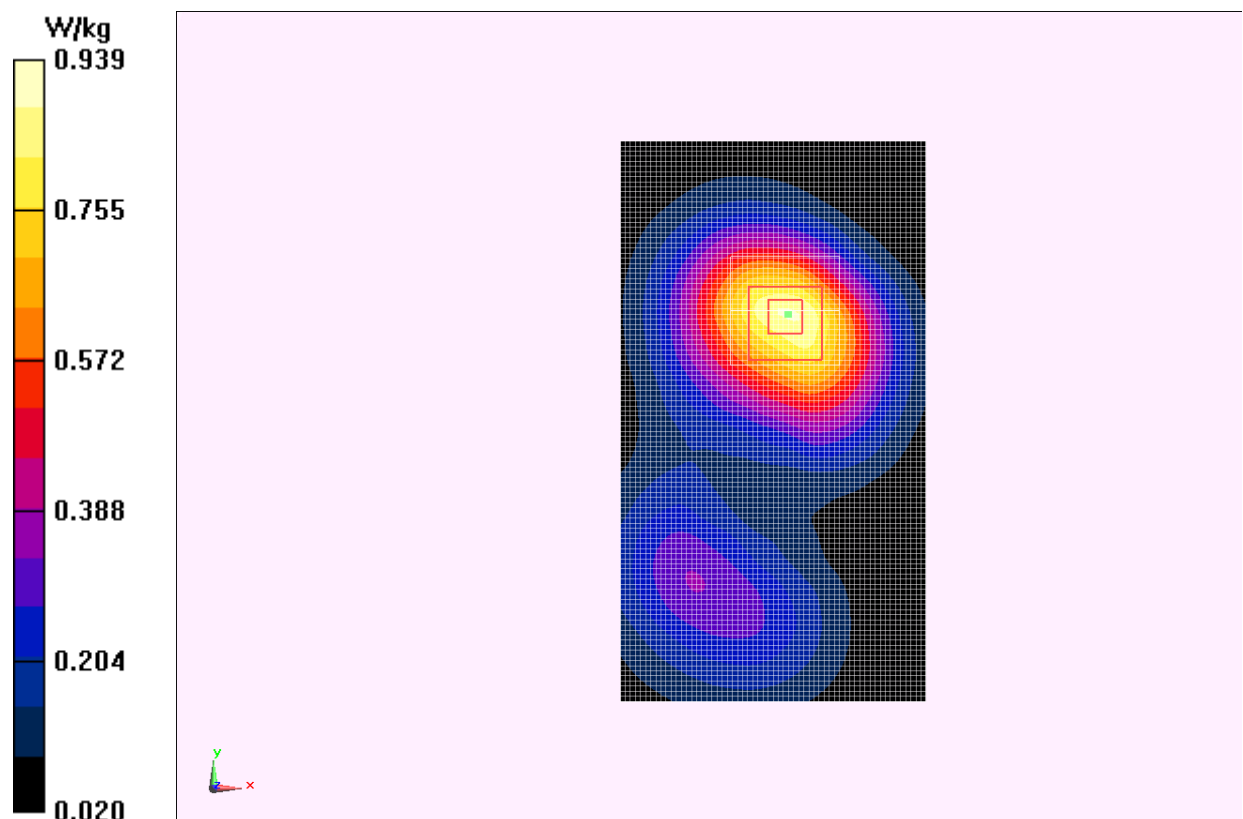


Fig.J.8 WCDMA1900 CH9262