



ANSI C63.19

TEST REPORT

Product Name UMTS Triband / GSM Quadband mobile phone

Model Name RAV4 TMOUS

Marketing Name ONE TOUCH 7024W

Brand Name ALCATEL

FCC ID RAD386

Client TCT Mobile Limited

Manufacturer TCT Mobile Limited

Date of issue July 23, 2013

TA Technology (Shanghai) Co., Ltd.

TA Technology (Shanghai) Co., Ltd.
Test Report

Report No. RXA1307-0093HAC02

Page 2 of 74

GENERAL SUMMARY

Reference Standard(s)	ANSI C63.19-2007: American National Standard Methods of Measurement of Compatibility between Wireless Communications Devices and Hearing Aids.
Conclusion	This portable wireless equipment has been measured in all cases requested by the relevant standards. General Judgment: T3
Comment	The test result only responds to the measured sample.

Approved by 初伟中
Director

Revised by 凌敏宝
HAC Manager

Performed by 张磊
HAC Engineer

TABLE OF CONTENT

1. General Information	4
1.1. Notes of the Test Report.....	4
1.2. Testing Laboratory	4
1.3. Applicant Information	5
1.4. Manufacturer Information.....	5
1.5. Information of EUT.....	6
1.6. The Ambient Conditions during Test.....	9
1.7. T-Coil signal quality categories of each tested Mode.....	9
1.8. Test Date	9
2. Test Information	10
2.1. Operational Conditions during Test.....	10
2.1.1. General Description of Test Procedures	10
2.1.2. GSM Test Configuration	10
2.1.3. WCDMA Test Configuration.....	10
2.2. T-Coil Measurements System Configuration	11
2.2.1. T-coil Measurement Set-up.....	11
2.2.2. AM1D Probe	13
2.2.3. Audio Magnetic Measurement Instrument (AMMI).....	14
2.2.4. Helmholtz Calibration Coil (AMCC).....	15
2.2.5. Test Arch Phantom & Phone Positioner	15
2.3. T-Coil measurement points and reference plane	17
2.4. T-Coil Test Procedures.....	18
3. T-Coil Performance Requirements	19
3.1.1. T-Coil coupling field intensity	19
3.1.2. Frequency response	19
3.1.3. Signal quality	20
4. Summary Test Results	21
4.1. GSM 850.....	21
4.2. GSM 1900.....	22
4.3. WCDMA Band II.....	23
4.4. WCDMA Band IV	24
4.5. WCDMA Band V	25
5. Measurement Uncertainty	26
6. Main Test Instruments	28
ANNEX A: Test Layout	29
ANNEX B: Graph Results.....	30
ANNEX C: Probe Calibration Certificate	65
ANNEX D: DAE4 Calibration Certificate.....	68
ANNEX E: The EUT Appearances and Test Configuration.....	73

TA Technology (Shanghai) Co., Ltd.

Test Report

Report No. RXA1307-0093HAC02

Page 4 of 74

1. General Information

1.1. Notes of the Test Report

TA Technology (Shanghai) Co., Ltd. has obtained the accreditation of China National Accreditation Service for Conformity Assessment (CNAS), and accreditation number: L2264.

TA Technology (Shanghai) Co., Ltd. has been listed on the US Federal Communications Commission list of test facilities recognized to perform electromagnetic emissions measurements. The site recognition number is 428261.

TA Technology (Shanghai) Co., Ltd. has been listed by industry Canada to perform electromagnetic emission measurement. The site recognition number is 8510A.

TA Technology (Shanghai) Co., Ltd. guarantees the reliability of the data presented in this test report, which is the results of measurements and tests performed for the items under test on the date and under the conditions stated in this test report and is based on the knowledge and technical facilities available at TA Technology (Shanghai) Co., Ltd. at the time of execution of the test.

TA Technology (Shanghai) Co., Ltd. is liable to the client for the maintenance by its personnel of the confidentiality of all information related to the items under test and the results of the test. This report only refers to the item that has undergone the test.

This report standalone dose not constitute or imply by its own an approval of the product by the certification Bodies or competent Authorities. This report cannot be used partially or in full for publicity and/or promotional purposes without previous written approval of **TA Technology (Shanghai) Co., Ltd.** and the Accreditation Bodies, if it applies.

If the electrical report is inconsistent with the printed one, it should be subject to the latter.

1.2. Testing Laboratory

Company: TA Technology (Shanghai) Co., Ltd.
Address: No.145, Jintang Rd, Tangzhen Industry Park, Pudong Shanghai, China
City: Shanghai
Post code: 201201
Country: P. R. China
Contact: Yang Weizhong
Telephone: +86-021-50791141/2/3
Fax: +86-021-50791141/2/3-8000
Website: <http://www.ta-shanghai.com>
E-mail: yangweizhong@ta-shanghai.com

TA Technology (Shanghai) Co., Ltd.
Test Report

Report No. RXA1307-0093HAC02

Page 5 of 74

1.3. Applicant Information

Company: TCT Mobile Limited
Address: 5F, C building, No. 232, Liang Jing Road ZhangJiang High-Tech Park, Pudong Area
Shanghai, P.R. China. 201203
City: Shanghai
Postal Code: /
Country: P.R. China

1.4. Manufacturer Information

Company: TCT Mobile Limited
Address: 5F, C building, No. 232, Liang Jing Road ZhangJiang High-Tech Park, Pudong Area
Shanghai, P.R. China. 201203
City: Shanghai
Postal Code: /
Country: P.R. China

TA Technology (Shanghai) Co., Ltd.

Test Report

Report No. RXA1307-0093HAC02

Page 6 of 74

1.5. Information of EUT

General Information

Device Type:	Portable Device		
State of Sample:	Prototype Unit		
Product IMEI:	013775000250086		
Hardware Version:	PIO		
Software Version:	L15		
Antenna Type:	Internal Antenna		
Device Operating Configurations:			
Supporting Mode(s):	GSM 850/GSM 1900; (tested) UMTS Band II/UMTS Band IV/ UMTS Band V; (tested) GSM 900/GSM 1800; (untested) Bluetooth; (untested) WiFi (802.11b/g/n HT20/ n HT40); (untested)		
Test Modulation:	(GSM)GMSK; (UMTS)QPSK		
Operating Frequency Range(s):	Mode	Tx (MHz)	Rx (MHz)
	GSM 850	824.2 ~ 848.8	869.2 ~ 893.8
	GSM 1900	1850.2 ~ 1909.8	1930.2 ~ 1989.8
	UMTS Band II	1852.4 ~ 1907.6	1932.4 ~ 1987.6
	UMTS Band IV	1712.4 ~ 1752.6	2112.4 ~ 2152.6
	UMTS Band V	826.4 ~ 846.6	871.4 ~ 891.6
Power Class:	GSM 850: 4		
	GSM 1900: 1		
	UMTS Band II: 3		
	UMTS Band IV: 3		
	UMTS Band V: 3		
Power Level	GSM 850: tested with power level 5		
	GSM 1900: tested with power level 0		
	UMTS Band II: tested with power control all up bits		
	UMTS Band IV: tested with power control all up bits		
	UMTS Band V: tested with power control all up bits		
Test Channel:Middle	190	(GSM 850)	(tested)
	661	(GSM 1900)	(tested)
	9400	(UMTS Band II)	(tested)
	1413	(UMTS Band IV)	(tested)
	4183	(UMTS Band V)	(tested)

TA Technology (Shanghai) Co., Ltd.

Test Report

Report No. RXA1307-0093HAC02

Page 7 of 74

Auxiliary Equipment Details

AE1:Battery

Model: CAC1800000C3

Manufacturer: SCUD

S/N: /

Equipment Under Test (EUT) has a GSM/UMTS antenna that is used for Tx/Rx, the second is a BT/WIFI antenna that is used for Tx/Rx and the third is a diversity antenna that is used for Rx. The detail about Mobile phone and Lithium Battery is in chapter 1.5 in this report. T-Coil is tested for GSM 850, GSM 1900, WCDMA Band II, WCDMA Band IV and WCDMA Band V.

The sample under test was selected by the Client.

Components list please refer to documents of the manufacturer.

TA Technology (Shanghai) Co., Ltd.
Test Report

Report No. RXA1307-0093HAC02

Page 8 of 74

Air-Interface	Band (MHz)	Type	C63.19/ tested	Simultaneous Transmissions Note: Not to be tested	Concurrent single transmission	Reduced power 20.19(c)(1)	Voice Over Digital Transport (Data)
GSM	850	VO	Yes	Yes WIFI or BT	Yes: WIFI, BT	NA	NA
	1900	VO				NA	NA
	GPRS/EGPRS	DT	NA	Yes WIFI or BT	Yes: * see note	NA	NA
WCDMA	Band II	VO	Yes	Yes WIFI or BT	Yes: * see note	NA	NA
	Band IV	VO	Yes	Yes WIFI or BT	Yes: * see note	NA	NA
	Band V	VO	Yes	Yes WIFI or BT	Yes: * see note	NA	NA
	HSDPA/HSUPA/RMC/HSPA+/DC-HSDPA	DT	NA	Yes WIFI or BT	Yes: * see note	NA	NA
WIFI	2450	DT	NA	Yes GSM,GPRS,EGPRS, HSDPA/HSUPA/RMC/HSPA+/ DC-HSDPA	NA	NA	Yes
Bluetooth (BT)	2400	DT	NA	Yes GSM,GPRS,EGPRS, HSDPA/HSUPA/RMC/HSPA+/ DC-HSDPA	NA	NA	NA

VO Voice CMRS/PSTN Service only
V/D Voice CMRS/PSTN and Data Service
DT Digital Transport

*HAC Rating was based on concurrent voice and data modes, Non current mode was found to represent worst case rating for both M and T rating

TA Technology (Shanghai) Co., Ltd.
Test Report

Report No. RXA1307-0093HAC02

Page 9 of 74

1.6. The Ambient Conditions during Test

Temperature	Min. = 18°C, Max. = 28 °C
Relative humidity	Min. = 0%, Max. = 80%
Ground system resistance	< 0.5 Ω
Ambient noise is checked and found very low and in compliance with requirement of standards. Reflection of surrounding objects is minimized and in compliance with requirement of standards.	

1.7. T-Coil signal quality categories of each tested Mode

Band	Category
GSM 850	T3
GSM 1900	T3
UMTS Band II	T4
UMTS Band IV	T4
UMTS Band V	T4

1.8. Test Date

The test performed on July 18, 2013.

2. Test Information

2.1. Operational Conditions during Test

2.1.1. General Description of Test Procedures

The phone was tested in all normal configurations for the ear use. The EUT is mounted in the device holder equivalent as for classic dosimeter measurements. The acoustic output of the EUT shall coincide with the center point of the area formed by the dielectric wire and the middle bar of the arch's top frame. The EUT shall be moved vertically upwards until it touches the frame. The fine adjustment is possible by sliding the complete EUT holder on the yellow base plate of the Test Arch phantom. During the test, the EUT is selected on T-Coil mode, the LCD backlight is turn off and volume is adjusted to maximum level.

2.1.2. GSM Test Configuration

A communication link is set up with a System Simulator (SS) by RF cable, and a call is established. The Absolute Radio Frequency Channel Number (ARFCN) is allocated to 190 respectively in the case of GSM 850, allocated to 661 respectively in the case of GSM 1900. T-Coil configurations is measured in Speechcod/Hendset Low using System Simulator (SS) of CMU200 , at the same time the EUT shall be operated at its maximum RF output power setting.

2.1.3. WCDMA Test Configuration

A communication link is set up with a System Simulator (SS) by RF cable, and a call is established. The Absolute Radio Frequency Channel Number (ARFCN) are allocated to 9400 respectively in the case of WCDMA Band II, allocated to 1413 respectively in the case of WCDMA Band IV, allocated to 4183 respectively in the case of WCDMA Band V. T-Coil configurations is measured in voice mode with 12.2kps RMC using System Simulator (SS) of CMU200, at the same time the EUT shall be operated at its maximum RF output power setting.

2.2. T-Coil Measurements System Configuration

2.2.1. T-coil Measurement Set-up

These measurements are performed using the DASY5 automated dosimetric assessment system. It is made by Schmid & Partner Engineering AG (SPEAG) in Zurich, Switzerland. It consists of high precision robotics system (Stäubli), robot controller, Intel Core computer, near-field probe, probe alignment sensor. The robot is a six-axis industrial robot performing precise movements. Cell controller systems contain the power supply, robot controller, teach pendant (Joystick) and remote control, and are used to drive the robot motors. The Stäubli Robot is connected to the cell controller to allow software manipulation of the robot. A data acquisition electronic (DAE) circuit performs the signal amplification; signal multiplexing, AD-conversion, offset measurements, mechanical surface detection, collision detection, etc. is connected to the Electro-optical coupler (EOC). The EOC performs the conversion from the optical into digital electric signal of the DAE and transfers data to the PC plug-in card.

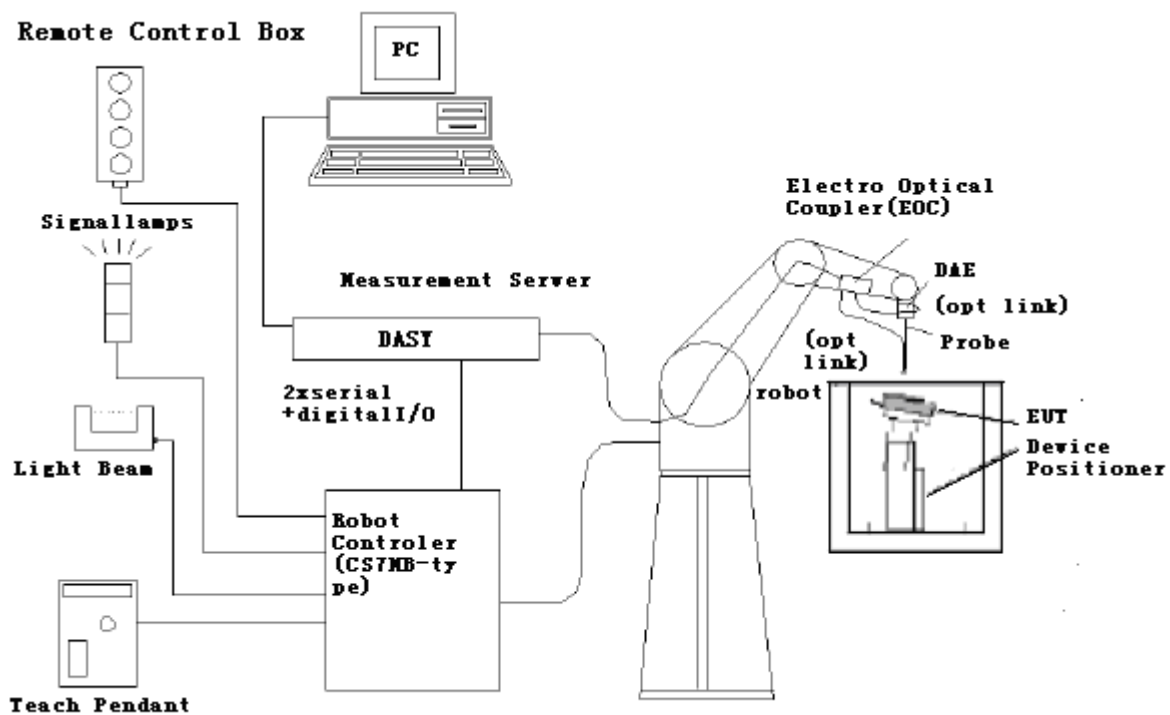


Figure 1 T-Coil Test Measurement Set-up

The DAE4 consists of a highly sensitive electrometer-grade preamplifier with auto-zeroing, a channel and gain-switching multiplexer, a fast 16 bit AD-converter and a command decoder and control logic unit. Transmission to the PC-card is accomplished through an optical downlink for data and status information and an optical uplink for commands and clock lines. The mechanical probe mounting device includes two different sensor systems for frontal and sidewise probe contacts. They are also used for mechanical surface detection and probe collision detection. The robot uses its own controller with a built in VME-bus computer.

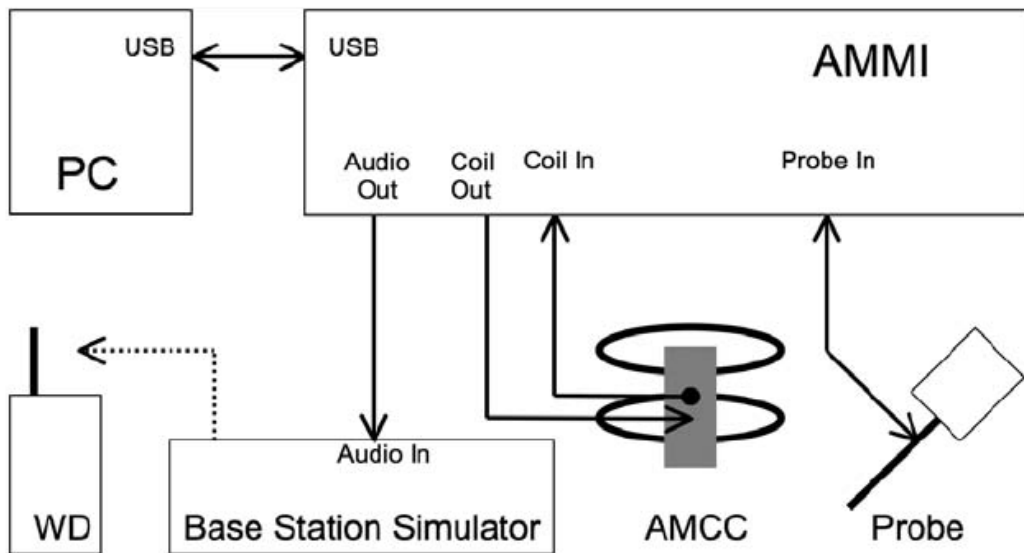


Figure 2 T-Coil Test Measurement Set-up

2.2.2. AM1D Probe

The AM1D probe is an active probe with a single sensor. It is fully RF-shielded and has a rounded tip 6mm in diameter incorporating a pickup coil with its center offset 3mm from the tip and the sides. The symmetric signal preamplifier in the probe is fed via the shielded symmetric output cable from the AMMI with a 48V “phantom” voltage supply. The 7-pin connector on the back in the axis of the probe does not carry any signals. It is mounted to the DAE for the correct orientation of the sensor. If the probe axis is tilted 54.7 degree from the vertical, the sensor is approximately vertical when the signal connector is at the underside of the probe (cable hanging downwards).

Specification

frequency range	0.1 - 20 kHz (RF sensitivity <-100 dB, fully RF shielded)
sensitivity	<-50 dB A/m @ 1 kHz
pre-amplifier	40 dB, symmetric
dimensions	tip diameter / length: 6 / 290 mm, sensor according to ANSI-C63.19



Figure 3 AM1D Probe

2.2.3. Audio Magnetic Measurement Instrument (AMMI)

The Audio Magnetic Measuring Instrument (AMMI) is a desktop 19-inch unit containing a sampling unit, a waveform generator for test and calibration signals, and a USB interface.



Figure 4 AMMI front panel

Port description:

Audio Out	BNC, audio signal to the base station simulator, for >500Ohm load
Coil Out	BNC, test and calibration signal to the AMCC (top connector), for 50Ohm load
Coil In	XLR, monitor signal from the AMCC BNO connector, 600 Ohm
Probe In	XLR, probe signal and phantom supply to the probe Lemo connector



Figure 5 AMMI rear side

Sampling rate	48 kHz / 24 bit
Dynamic range	85 dB
Test signal generation	User selectable and predefined (vis PC)
Calibration	Auto-calibration / full system calibration using AMCC with monitor output
Dimensions	482 x 65 x 270 mm

2.2.4. Helmholtz Calibration Coil (AMCC)

The Audio Magnetic Calibration coil is a Helmholtz Coil designed for calibration of the AM1D probe. The two horizontal coils generate a homogeneous magnetic field in the z direction. The DC input resistance is adjusted by a series resistor to approximately 50Ohm, and a shunt resistor of 10Ohm permits monitoring the current with a scale of 1:10

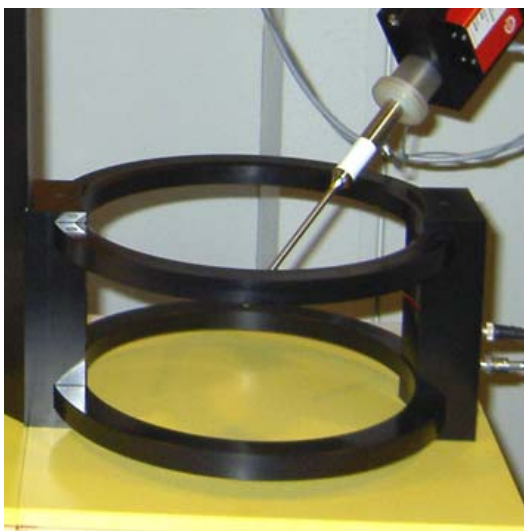


Figure 6 AMCC

Port description:

Signal	Connector	Resistance
Coil In	BNC	Typically 50Ohm
Coil Monitor	BNO	10Ohm ± 1% (100mV corresponding to 1 A/m)

Specification:

Dimensions	370 x 370 x 196 mm, according to ANSI-C63.19
-------------------	--

2.2.5. Test Arch Phantom & Phone Positioner

The Test Arch phantom should be positioned horizontally on a stable surface. Reference markings on the Phantom allow the complete setup of all predefined phantom positions and measurement grids by manually teaching three points in the robot. It enables easy and well defined positioning of the phone and validation dipoles as well as simple teaching of the robot (Dimensions: 370 x 370 x 370 mm).

The Device reference point is set for the EUT at 6.3 mm, the Grid reference point is on the upper surface at the origin of the coordinates, and the “user point \Height Check 0.5 mm” is 0.5mm above the center, allowing verification of the gap of 0.5mm while the probe is positioned there.

The Phone Positioner supports accurate and reliable positioning of any phone with effect on near field $\pm 0.5\text{ dB}$.



Figure 7 T-coil Phantom & Device Holder

2.3. T-Coil measurement points and reference plane

The following figure illustrates the three standard probe orientations. Position 1 is the axial orientation of the probe coil; orientation 2 and orientation 3 are radial orientations. The space between the measurement positions is not fixed. It is recommended that a scan of the EUT be done for each probe coil orientation and that the maximum level recorded be used as the reading for that orientation of the probe coil.

1) The reference plane is the planar area that contains the highest point in the area of the phone that normally rests against the user's ear. It is parallel to the centerline of the receiver area of the phone and is defined by the points of the receiver-end of the EUT handset, which, in normal handset use, rest against the ear.

2) The measurement plane is parallel to, and 10 mm in front of, the reference plane.

3) The reference axis is normal to the reference plane and passes through the center of the receiver speaker section (or the center of the hole array); or may be centered on a secondary inductive source. The actual location of the measurement point shall be noted in the test report as the measurement reference point.

4) The measurement points may be located where the axial and radial field intensity measurements are optimum with regard to the requirements. However, the measurement points should be near the acoustic output of the EUT and shall be located in the same half of the phone as the EUT receiver. In a EUT handset with a centered receiver and a circularly symmetrical magnetic field, the measurement axis and the reference axis would coincide.

5) The relative spacing of each measurement orientation is not fixed. The axial and two radial orientations should be chosen to select the optimal position.

6) The measurement point for the axial position is located 10 mm from the reference plane on the measurement axis. The actual location of the measurement point shall be noted in test reports and designated as the measurement reference point.

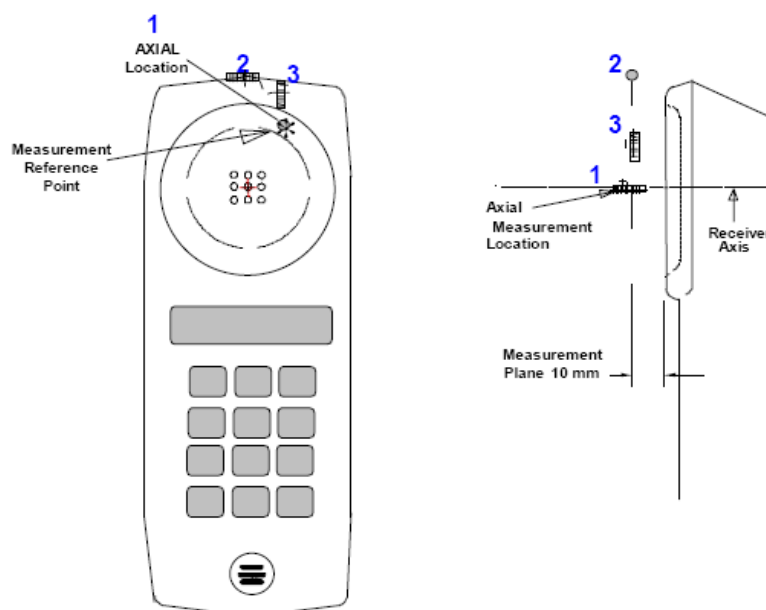


Figure 8 Axis and planes for EUT audio frequency magnetic field measurements

2.4. T-Coil Test Procedures

The following illustrate a typical test scan over a wireless communications device:

- 1) Geometry and signal check: system probe alignment, proper operation of the field probe, probe measurement system, other instrumentation, and the positioning system was confirmed. A surface calibration was performed before each setup change to ensure repeatable spacing and proper maintenance of the measurement plane using the test Arch.
- 2) Set the reference drive level of signal voice defined in C63.19 per 6.3.2.1.
- 3) The ambient and test system background noise (dB A/m) was measured as well as ABM2 over the full measurement. The maximum noise level must be at least 10dB below the limit of C63.19 per 7.3.2.
- 4) The EUT was positioned in its intended test position, acoustic output point of the device perpendicular to the field probe.
- 5) The EUT operation for maximum rated RF output power was configured and connected by using of coaxial cable connection to the base station simulator at the test channel and other normal operating parameters as intended for the test. The battery was ensured to be fully charged before each test. The center sub-grid was centered over the center of the acoustic output (also audio band magnetic output, if applicable). The EUT audio output was positioned tangent (as physically possible) to the measurement plane.
- 6) The EUT's RF emission field was eliminated from T-coil results by using a well RF-shielding of the probe, AM1D, and by using of coaxial cable connection to a Base Station Simulator. One test channel was pre-measurement to avoid this possibility.
- 7) Determined the optimal measurement locations for the EUT by following the three steps, coarse resolution scan, fine resolution scans, and point measurement, as described in C63.19 per 6.3.4.4. At each measurement locations, samples in the measurement window duration were evaluated to get ABM1 and the signal spectrum. The noise measurement was performed after the scan with the signal, the same happened, just with the voice signal switched off. The ABM2 was calculated from this second scan.
- 8) All results resulting from a measurement point in a T-Coil job were calculated from the signal samples during this window interval. ABM values were averaged over the sequence of these samples.
- 9) At an optimal point measurement, the SNR (ABM1/ABM2) was calculated for axial, radial transverse and radial longitudinal orientation, and the frequency response was measured in axial axis.
- 10) Corrected for the frequency response after the EUT measurement since the DASY5 system had known the spectrum of the input signal by using a reference job.
- 11) In SEMCAD postprocessing, the spectral points are in addition scaled with the high-pass (half-band) and the A-weighting, bandwidth compensated factor (BWC) and those results are final as shown in this report.

3. T-Coil Performance Requirements

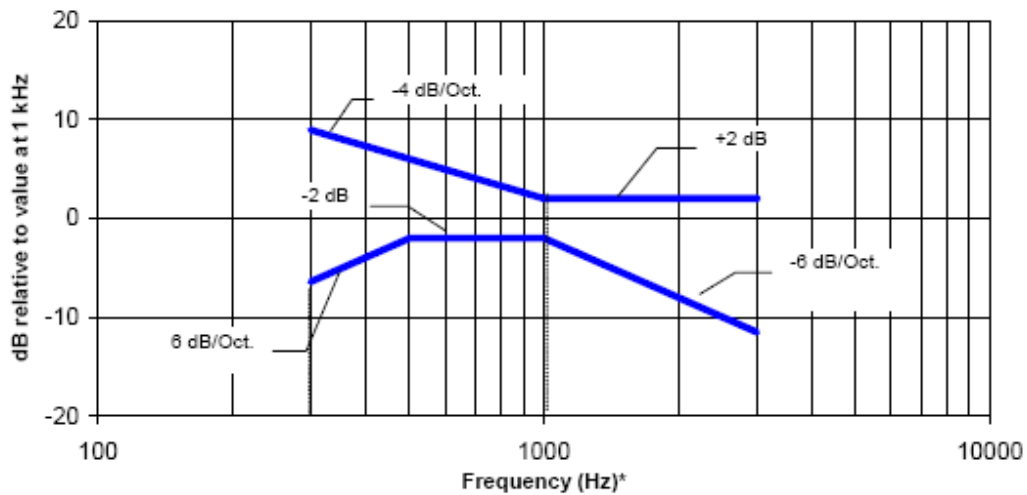
In order to be rated for T-Coil use, a EUT shall meet the requirements for signal level and signal quality contained in this part.

3.1.1. T-Coil coupling field intensity

When measured as specified in ANSI C63.19, the T-Coil signal shall be ≥ -18 dB (A/m) at 1 kHz, in a 1/3 octave band filter for all orientations.

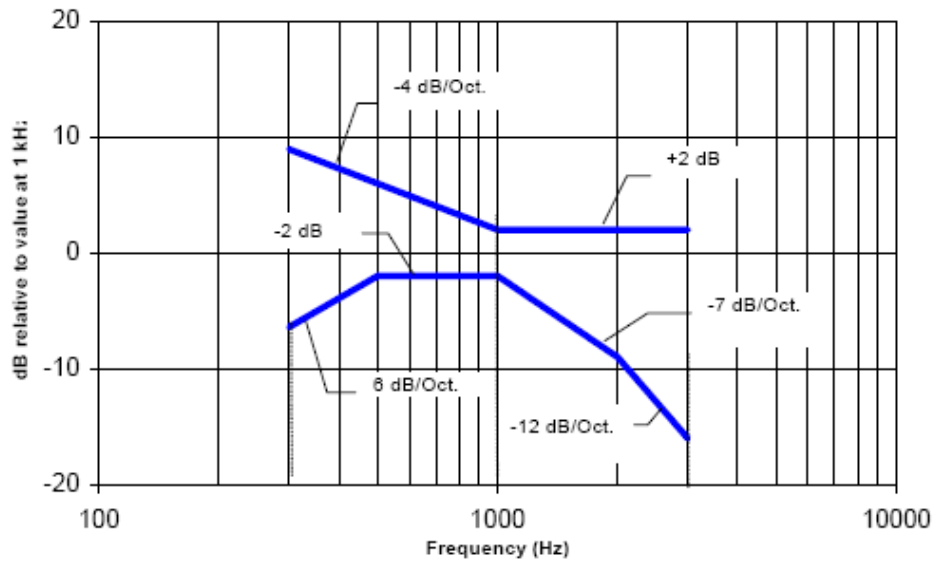
3.1.2. Frequency response

The frequency response of the axial component of the magnetic field, measured in 1/3 octave bands, shall follow the response curve specified in this sub-clause, over the frequency range 300 Hz to 3000 Hz. The following figures provide the boundaries for the specified frequency. These response curves are for true field strength measurements of the T-Coil signal. Thus the 6 dB/octave probe response has been corrected from the raw readings.



NOTE—Frequency response is between 300 Hz and 3000 Hz.

Figure 9 Magnetic field frequency response for EUTs with a field ≤ -15 dB (A/m) at 1 kHz



NOTE—Frequency response is between 300 Hz and 3000 Hz.

Figure 10 Magnetic field frequency response for EUTs with a field that exceeds -15 dB(A/m) at 1 kHz

3.1.3. Signal quality

This part provides the signal quality requirement for the intended T-Coil signal from a EUT. Only the RF immunity of the hearing aid is measured in T-Coil mode. It is assumed that a hearing aid can have no immunity to an interference signal in the audio band, which is the intended reception band for this mode. So, the only criteria that can be measured is the RF immunity in T-Coil mode. This is measured using the same procedure as for the audio coupling mode and at the same levels.

The worst signal quality of the three T-Coil signal measurements shall be used to determine the T-Coil mode category per Table 1

Table 1: T-Coil signal quality categories

Category	Telephone parameters WD signal quality [(signal + noise) – to – noise ratio in decibels]
Category T1	0 dB to 10 dB
Category T2	10 dB to 20 dB
Category T3	20 dB to 30 dB
Category T4	> 30 dB

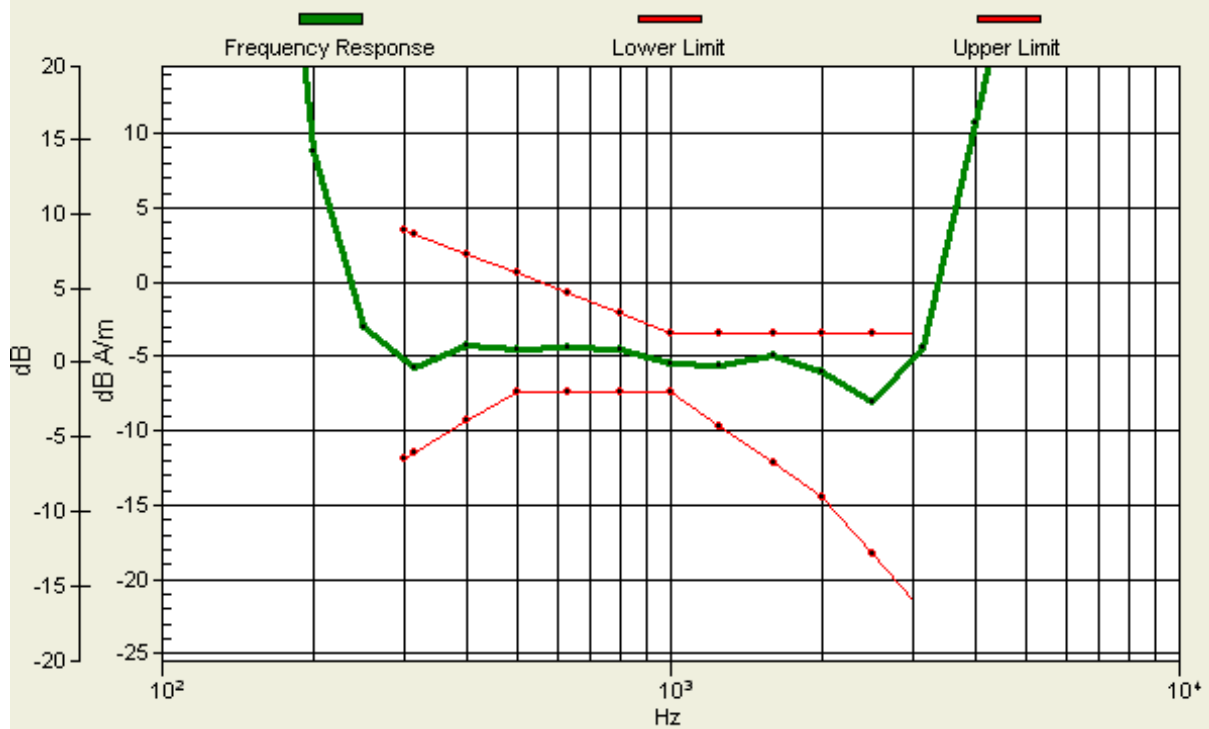
4. Summary Test Results

4.1. GSM 850

Band-Channel	Probe Orientation	Measurement Position (x,y)[mm]	ABM1 \geq -18dB(A/m) (Signal)	SNR(ABM1/ABM2)(dB)	Frequency Response	T-Rating
GSM 850-CH190	x (Radial):	(25,8.3)	-4.63	20.1	/	T3
	y (Radial):	(4.2,0)	0.207	39.8		T4
	z (Axial):	(-8.3,4.2)	-3.02	36.6	Pass	T4

General Scans/z (axial) wideband at best S/N/ABM Freq Resp(x,y,z,f)

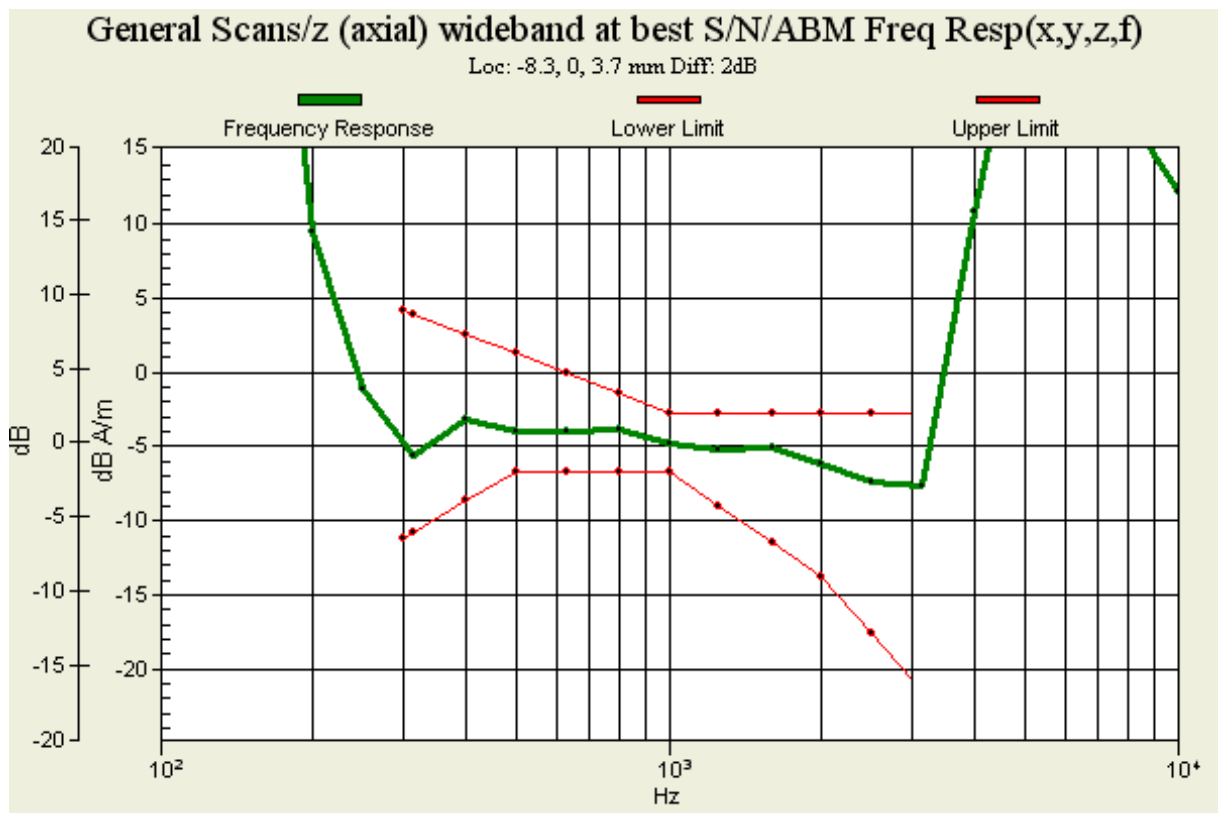
Loc: -8.3, 4.2, 3.7 mm Diff: 1.56dB



TA Technology (Shanghai) Co., Ltd. Test Report

4.2. GSM 1900

Band-Channel	Probe Orientation	Measurement Position (x,y)[mm]	ABM1 \geq -18dB(A/m) (Signal)	SNR(ABM1/ABM2)(dB)	Frequency Response	T-Rating
GSM 1900-CH661	x (Radial):	(-8.3,0)	3.67	23.7	/	T3
	y (Radial):	(4.2,0)	-0.537	40.7		T4
	z (Axial):	(-8.3,0)	-3.48	38.6	Pass	T4

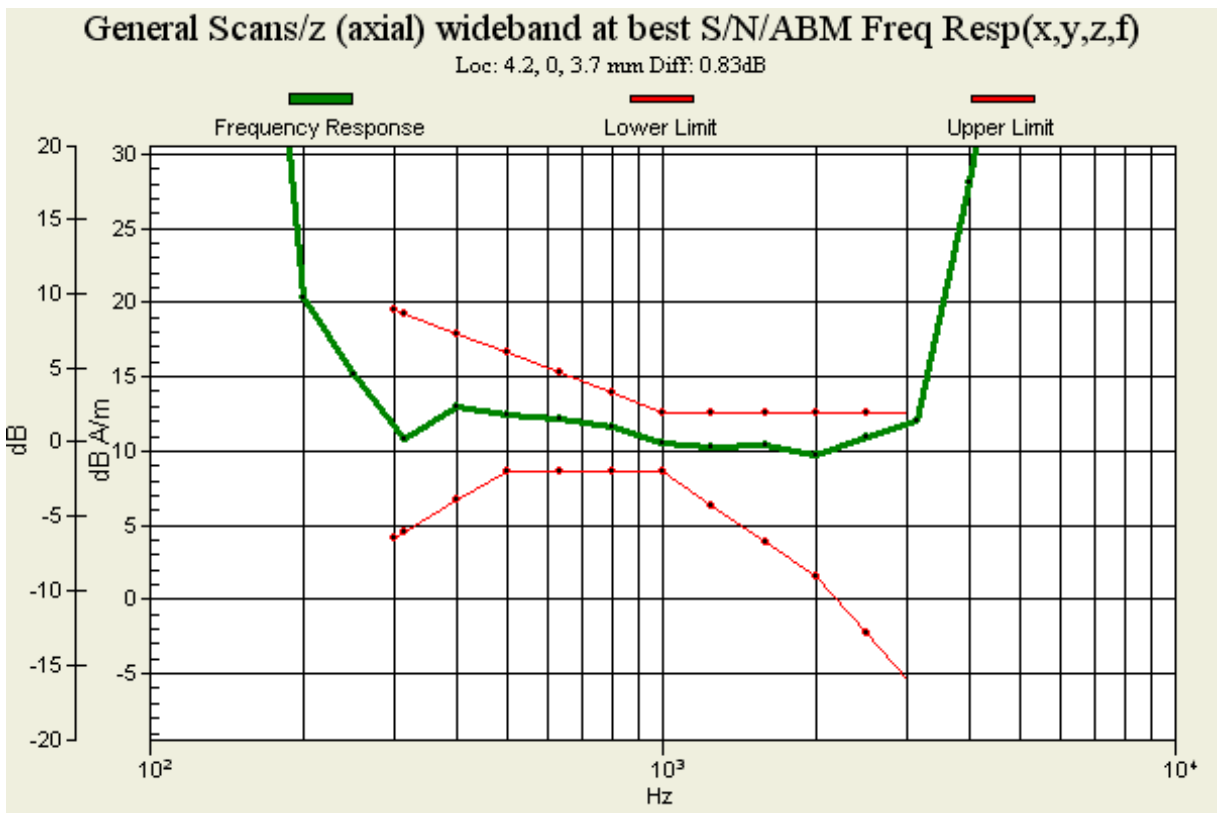


TA Technology (Shanghai) Co., Ltd.

Test Report

4.3. WCDMA Band II

Band-Channel	Probe Orientation	Measurement Position (x,y)[mm]	ABM1 \geq -18dB(A/m) (Signal)	SNR(ABM1/ABM2)(dB)	Frequency Response	T-Rating
WCDMA Band II-CH9400	x (Radial):	(12.5,0)	5.31	50.1	/	T4
	y (Radial):	(4.2,8.3)	5.28	58.0		T4
	z (Axial):	(4.2,0)	14.1	52.1	Pass	T4

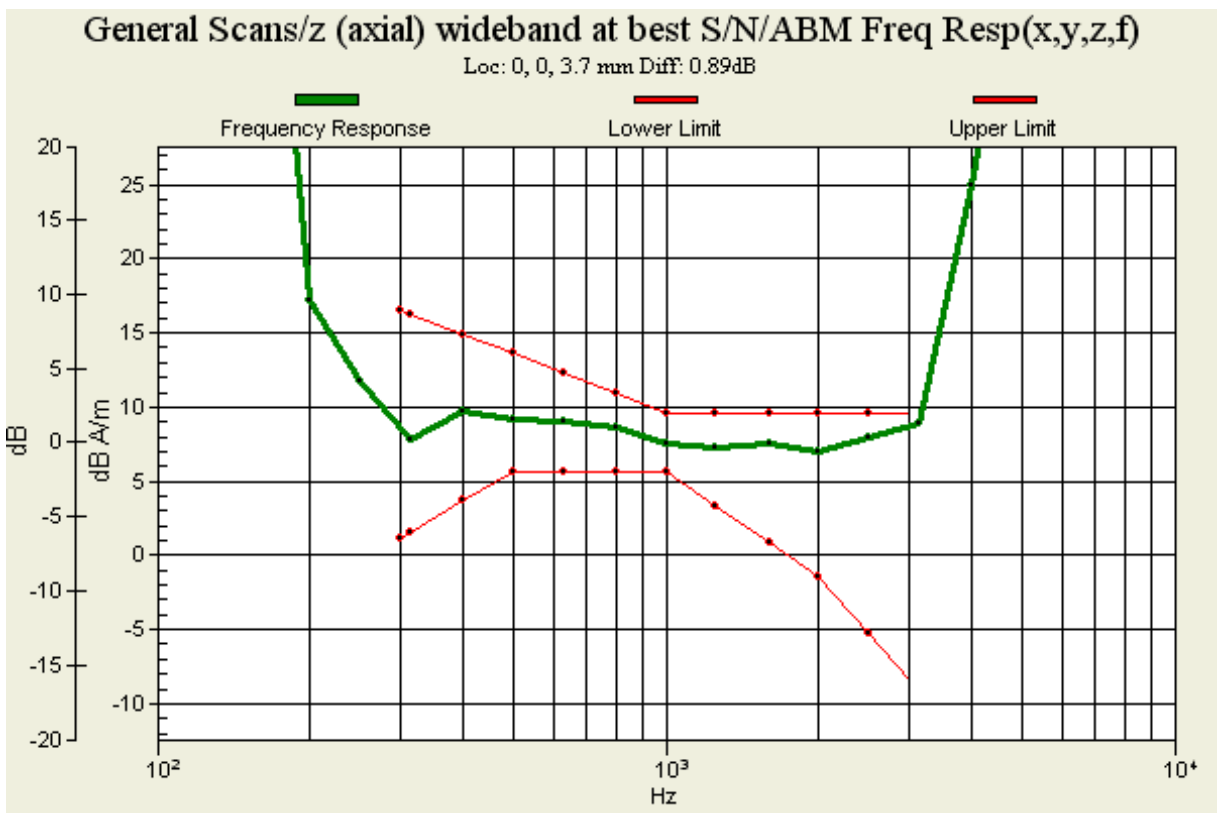


TA Technology (Shanghai) Co., Ltd.

Test Report

4.4. WCDMA Band IV

Band-Channel	Probe Orientation	Measurement Position (x,y)[mm]	ABM1 \geq -18dB(A/m) (Signal)	SNR(ABM1/ABM2)(dB)	Frequency Response	T-Rating
WCDMA Band IV-CH1413	x (Radial):	(12.5,0)	5.02	49.9	/	T4
	y (Radial):	(4.2,8.3)	4.94	57.3		T4
	z (Axial):	(0,0)	10.8	52.6	Pass	T4

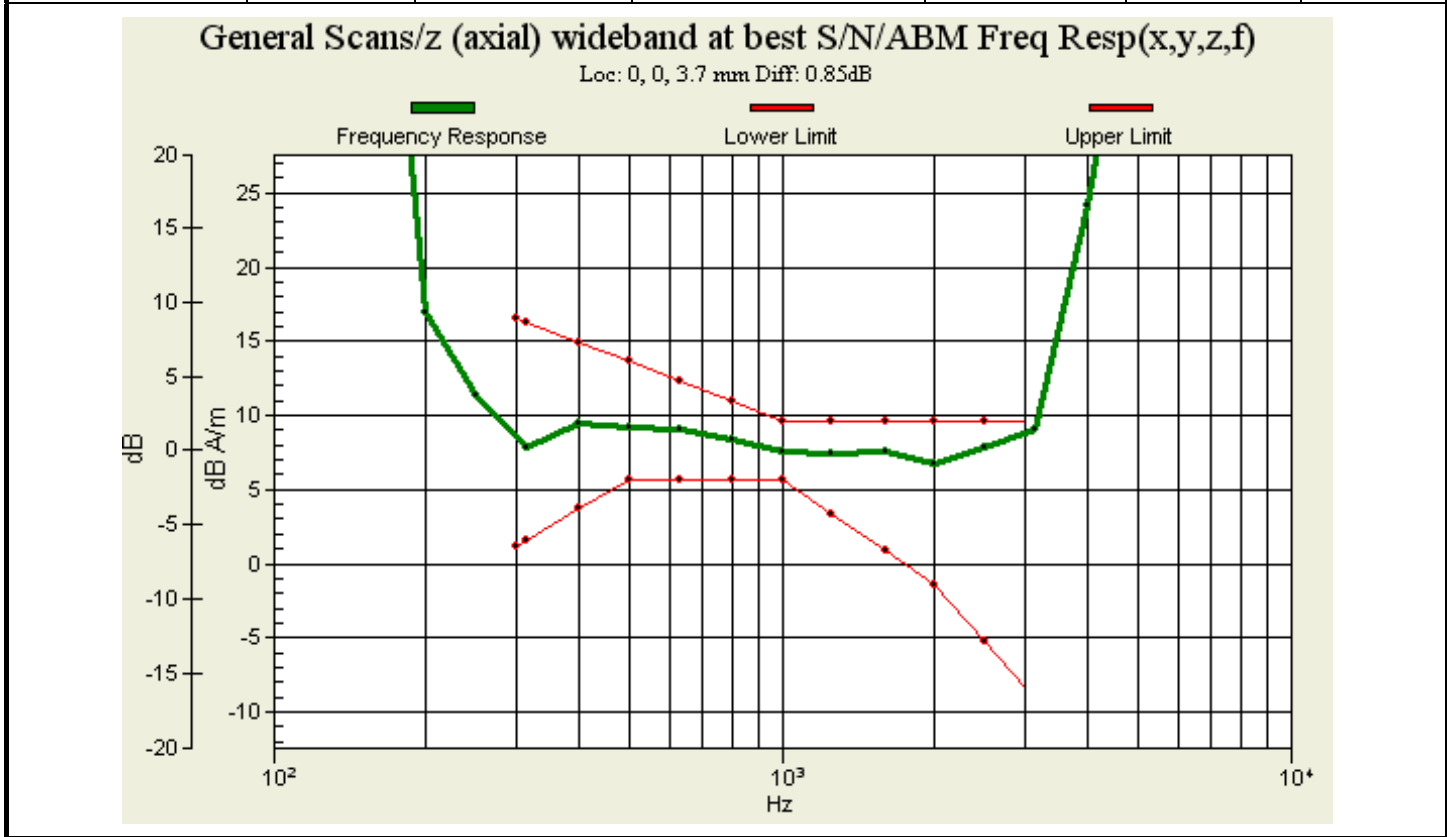


TA Technology (Shanghai) Co., Ltd.

Test Report

4.5. WCDMA Band V

Band-Channel	Probe Orientation	Measurement Position (x,y)[mm]	ABM1 \geq -18dB(A/m) (Signal)	SNR(ABM1/ABM2)(dB)	Frequency Response	T-Rating
WCDMA Band V-CH4183	x (Radial):	(12.5,0)	4.91	50.2	/	T4
	y (Radial):	(4.2,8.3)	4.74	57.9		T4
	z (Axial):	(0,0)	10.6	52.9	Pass	T4



Note:

1. The LCD backlight is turn off and volume is adjusted to maximum level during T-Coil testing.
2. Signal strength measurement scan plots are presented in Annex B.

TA Technology (Shanghai) Co., Ltd.

Test Report

Report No. RXA1307-0093HAC02

Page 26 of 74

5. Measurement Uncertainty

No.	Error source	Type	Uncertainty Value a_i (%)	Prob. Dist.	k	ABM 1 c_i	ABM2 c_i	Std. Unc. ABM1 u_i (%)	Std. Unc. ABM2 u_i (%)	Degree of freedom V_{eff} or V_i
1	System Repeatability	A	0.016	N	1	1	1	0.016	0.016	9
Probe Sensitivity										
2	Reference Level	B	3.0	R	$\sqrt{3}$	1	1	3.0	3.0	∞
3	AMCC Geometry	B	0.4	R	$\sqrt{3}$	1	1	0.2	0.2	∞
4	AMCC Current	B	0.6	R	$\sqrt{3}$	1	1	0.4	0.4	∞
5	Probe Positioning during Calibration	B	0.1	R	$\sqrt{3}$	1	1	0.1	0.1	∞
6	Noise Contribution	B	0.7	R	$\sqrt{3}$	0.014 3	1	0.0	0.4	∞
7	Frequency Slope	B	5.9	R	$\sqrt{3}$	0.1	1	0.3	3.5	∞
Probe System										
8	Repeatability / Drift	B	1.0	R	$\sqrt{3}$	1	1	0.6	0.6	∞
9	Linearity / Dynamic Range	B	0.6	N	1	1	1	0.4	0.4	∞
10	Acoustic Noise	B	1.0	R	$\sqrt{3}$	0.1	1	0.1	0.6	∞
11	Probe Angle	B	2.3	R	$\sqrt{3}$	1	1	1.4	1.4	∞
12	Spectral Processing	B	0.9	R	$\sqrt{3}$	1	1	0.5	0.5	∞
13	Integration Time	B	0.6	N	1	1	5	0.6	3.0	∞
14	Field Distribution	B	0.2	R	$\sqrt{3}$	1	1	0.1	0.1	∞
Test Signal										
15	Ref.Signal Spectral Response	B	0.6	R	$\sqrt{3}$	0	1	0.0	0.4	∞
Positioning										
16	Probe Positioning	B	1.9	R	$\sqrt{3}$	1	1	1.1	1.1	∞
17	Phantom Thickness	B	0.9	R	$\sqrt{3}$	1	1	0.5	0.5	∞

TA Technology (Shanghai) Co., Ltd.
Test Report

Report No. RXA1307-0093HAC02

Page 27 of 74

18	EUT Positioning	B	1.9	R	$\sqrt{3}$	1	1	1.1	1.1	∞
External Contributions										
19	RF Interference	B	0.0	R	$\sqrt{3}$	1	0.3	0.0	0.0	∞
20	Test Signal Variation	B	2.0	R	$\sqrt{3}$	1	1	1.2	1.2	∞
Combined Std. Uncertainty (ABM Field)		$u'_c = \sqrt{\sum_{i=1}^{20} c_i^2 u_i^2}$						4.1	6.1	
Expanded Std. Uncertainty		$u_e = 2u_c$		N		$k = 2$		8.2	12.2	

TA Technology (Shanghai) Co., Ltd.
Test Report

Report No. RXA1307-0093HAC02

Page 28 of 74

6. Main Test Instruments

No.	Name	Type	Serial Number	Calibration Date	Valid Period
01	Audio Magnetic 1D Field Probe	AM1DV2	1064	August 29, 2012	One year
02	Audio Magnetic Calibration Coil	SD HAC P02A	1112	N/A	N/A
03	Audio Measuring Instrument	AMMI	1101	N/A	N/A
04	DAE	DAE4	1317	January 25, 2013	One year
05	Software	DASY5, V5.2 Build 162	N/A	N/A	N/A
06	Software	SEMCAD X Version 14.0 Build 59	N/A	N/A	N/A
07	Universal Radio Communication Tester	CMU 200	118133	June 29, 2013	One year
08	TMFS	TMFS	1018	December 5, 2011	Two years
09	Hygrothermograph	WS-1	64591	September 27, 2012	One year

*****END OF REPORT *****

ANNEX A: Test Layout



Picture 1: HAC T-Coil System Layout

ANNEX B: Graph Results

T-Coil GSM 850 X longitudinal

Date/Time: 7/18/2013 3:48:29 PM

Communication System: GSM; Frequency: 836.6 MHz; Duty Cycle: 1:8.30042

Medium parameters used: $\sigma = 0$ mho/m, $\epsilon_r = 1$; $\rho = 1$ kg/m³

Ambient Temperature: 22.3 °C

Phantom section: TCoil Section

DASY5 Configuration:

Sensor-Surface: 4mm (Mechanical Surface Detection)

Probe: AM1DV2 - 1064; ; Calibrated: 8/29/2012

Electronics: DAE4 Sn1317; Calibrated: 1/25/2013

Phantom: HAC Test Arch with AMCC; Type: SD HAC P01 BA;

Measurement SW: DASY5, V5.2 Build 162; SEMCAD X Version 14.0 Build 59

RAV4 GSM850 HAC_TCoil_WD_Emission/General Scans/x (longitudinal) (2007) 4.2mm 50 x 50/ABM Signal(x,y,z) (13x13x1):

Measurement grid: dx=10mm, dy=10mm

Signal Type: Audio File (.wav) 48k_voice_1kHz_1s.wav

Output Gain: 33.76

Measure Window Start: 300ms

Measure Window Length: 1000ms

BWC applied: 0.162972 dB

Device Reference Point: 0, 0, -6.3 mm

Category	Telephone parameters WD signal quality [(signal+noise)-to-noise ratio in decibels]
Category T1	0 dB to 10 dB
Category T2	10 dB to 20 dB
Category T3	20 dB to 30 dB
Category T4	> 30 dB

Cursor:

ABM1 comp = 5.88 dB A/m

BWC Factor = 0.162972 dB

Location: -4.2, 0, 3.7 mm

RAV4 GSM850 HAC_TCoil_WD_Emission/General Scans/x (longitudinal) (2007) 4.2mm 50 x 50/ABM SNR(x,y,z) (13x13x1):

Measurement grid: dx=10mm, dy=10mm

Signal Type: Audio File (.wav) 48k_voice_1kHz_1s.wav

Output Gain: 33.76

Measure Window Start: 300ms

Measure Window Length: 1000ms

BWC applied: 0.162972 dB

TA Technology (Shanghai) Co., Ltd. Test Report

Report No. RXA1307-0093HAC02

Page 31 of 74

Device Reference Point: 0, 0, -6.3 mm

Category	Telephone parameters WD signal quality [(signal+noise)-to-noise ratio in decibels]
Category T1	0 dB to 10 dB
Category T2	10 dB to 20 dB
Category T3	20 dB to 30 dB
Category T4	> 30 dB

Cursor:

ABM1/ABM2 = 20.1 dB

ABM1 comp = -4.63 dB A/m

BWC Factor = 0.162972 dB

Location: 25, 8.3, 3.7 mm

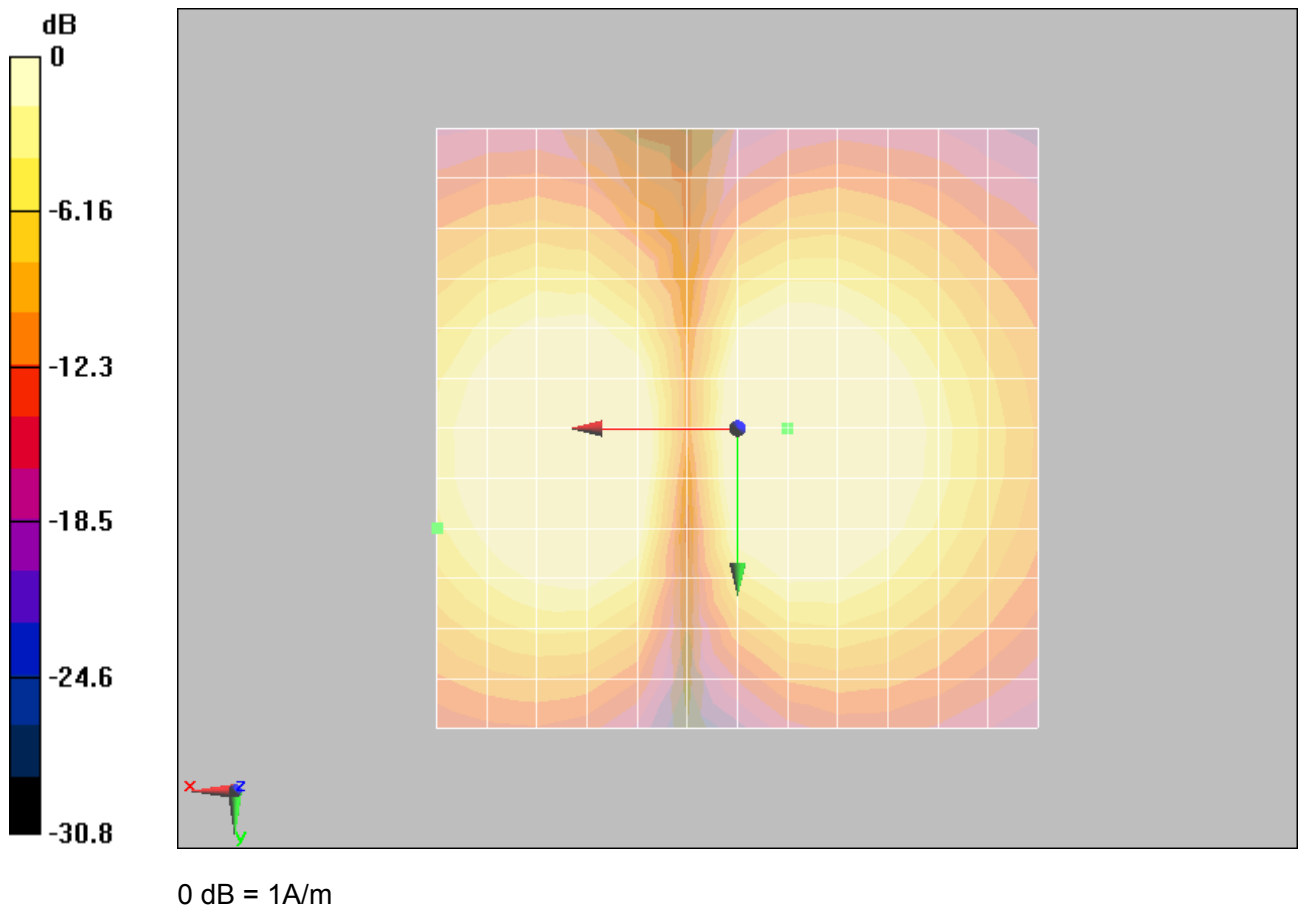


Figure 11 T-Coil GSM 850 X longitudinal

TA Technology (Shanghai) Co., Ltd.
Test Report

Report No. RXA1307-0093HAC02

Page 32 of 74

T-Coil GSM 850 Y transversal

Date/Time: 7/18/2013 3:31:48 PM

Communication System: GSM; Frequency: 836.6 MHz; Duty Cycle: 1:8.30042

Medium parameters used: $\sigma = 0$ mho/m, $\epsilon_r = 1$; $\rho = 1$ kg/m³

Ambient Temperature: 22.3 °C

Phantom section: TCoil Section

DASY5 Configuration:

Sensor-Surface: 4mm (Mechanical Surface Detection)

Probe: AM1DV2 - 1064; ; Calibrated: 8/29/2012

Electronics: DAE4 Sn1317; Calibrated: 1/25/2013

Phantom: HAC Test Arch with AMCC; Type: SD HAC P01 BA;

Measurement SW: DASY5, V5.2 Build 162; SEMCAD X Version 14.0 Build 59

RAV4 GSM850 HAC_TCoil_WD_Emission/General Scans/y (transversal) 4.2mm 50 x 50/ABM

Signal(x,y,z) (13x13x1):

Measurement grid: dx=10mm, dy=10mm

Signal Type: Audio File (.wav) 48k_voice_1kHz_1s.wav

Output Gain: 33.76

Measure Window Start: 300ms

Measure Window Length: 1000ms

BWC applied: 0.162972 dB

Device Reference Point: 0, 0, -6.3 mm

Category	Telephone parameters WD signal quality [(signal+noise)-to-noise ratio in decibels]
Category T1	0 dB to 10 dB
Category T2	10 dB to 20 dB
Category T3	20 dB to 30 dB
Category T4	> 30 dB

Cursor:

ABM1 comp = 6.26 dB A/m

BWC Factor = 0.162972 dB

Location: 4.2, -4.2, 3.7 mm

RAV4 GSM850 HAC_TCoil_WD_Emission/General Scans/y (transversal) 4.2mm 50 x 50/ABM

SNR(x,y,z) (13x13x1):

Measurement grid: dx=10mm, dy=10mm

Signal Type: Audio File (.wav) 48k_voice_1kHz_1s.wav

Output Gain: 33.76

Measure Window Start: 300ms

Measure Window Length: 1000ms

BWC applied: 0.162972 dB

Device Reference Point: 0, 0, -6.3 mm

TA Technology (Shanghai) Co., Ltd. Test Report

Category	Telephone parameters WD signal quality [(signal+noise)-to-noise ratio in decibels]
Category T1	0 dB to 10 dB
Category T2	10 dB to 20 dB
Category T3	20 dB to 30 dB
Category T4	> 30 dB

Cursor:

ABM1/ABM2 = 39.8 dB

ABM1 comp = 0.207 dB A/m

BWC Factor = 0.162972 dB

Location: 4.2, 0, 3.7 mm

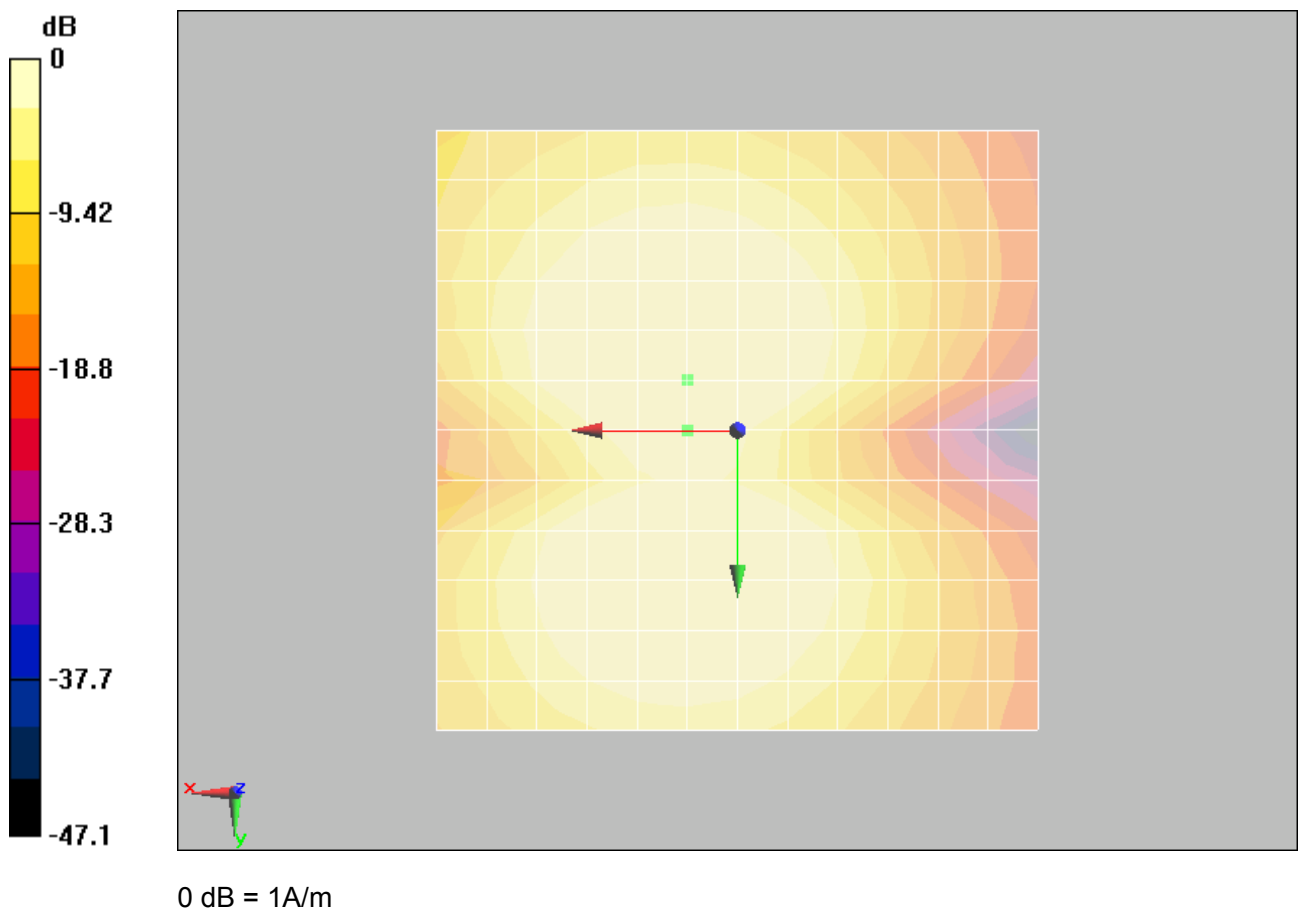


Figure 12 T-Coil GSM 850 Y transversal

TA Technology (Shanghai) Co., Ltd.

Test Report

Report No. RXA1307-0093HAC02

Page 34 of 74

T-Coil GSM 850 Z Axial

Date/Time: 7/18/2013 3:15:11 PM, Date/Time: 7/18/2013 4:05:10 PM

Communication System: GSM; Frequency: 836.6 MHz; Duty Cycle: 1:8.30042

Medium parameters used: $\sigma = 0$ mho/m, $\epsilon_r = 1$; $\rho = 1$ kg/m³

Ambient Temperature: 22.3 °C

Phantom section: TCoil Section

DASY5 Configuration:

Sensor-Surface: 4mm (Mechanical Surface Detection)

Probe: AM1DV2 - 1064; ; Calibrated: 8/29/2012

Electronics: DAE4 Sn1317; Calibrated: 1/25/2013

Phantom: HAC Test Arch with AMCC; Type: SD HAC P01 BA;

Measurement SW: DASY5, V5.2 Build 162; SEMCAD X Version 14.0 Build 59

RAV4 GSM850 HAC_TCoil_WD_Emission/General Scans/z (axial) 4.2mm 50 x 50/ABM

Signal(x,y,z) (13x13x1):

Measurement grid: dx=10mm, dy=10mm

Signal Type: Audio File (.wav) 48k_voice_1kHz_1s.wav

Output Gain: 33.76

Measure Window Start: 300ms

Measure Window Length: 1000ms

BWC applied: 0.162972 dB

Device Reference Point: 0, 0, -6.3 mm

Category	Telephone parameters WD signal quality [(signal+noise)-to-noise ratio in decibels]
Category T1	0 dB to 10 dB
Category T2	10 dB to 20 dB
Category T3	20 dB to 30 dB
Category T4	> 30 dB

Cursor:

ABM1 comp = 14.3 dB A/m

BWC Factor = 0.162972 dB

Location: 4.2, 0, 3.7 mm

RAV4 GSM850 HAC_TCoil_WD_Emission/General Scans/z (axial) 4.2mm 50 x 50/ABM

SNR(x,y,z) (13x13x1):

Measurement grid: dx=10mm, dy=10mm

Signal Type: Audio File (.wav) 48k_voice_1kHz_1s.wav

Output Gain: 33.76

Measure Window Start: 300ms

Measure Window Length: 1000ms

TA Technology (Shanghai) Co., Ltd.
Test Report

Report No. RXA1307-0093HAC02

Page 35 of 74

BWC applied: 0.162972 dB

Device Reference Point: 0, 0, -6.3 mm

Category	Telephone parameters WD signal quality [(signal+noise)-to-noise ratio in decibels]
Category T1	0 dB to 10 dB
Category T2	10 dB to 20 dB
Category T3	20 dB to 30 dB
Category T4	> 30 dB

Cursor:

ABM1/ABM2 = 36.6 dB

ABM1 comp = -3.02 dB A/m

BWC Factor = 0.162972 dB

Location: -8.3, 4.2, 3.7 mm

RAV4 GSM850 HAC_TCoil_WD_Emission/General Scans/z (axial) wideband at best S/N/ABM

Freq Resp(x,y,z,f) (1x1x1):

Measurement grid: dx=10mm, dy=10mm

Signal Type: Audio File (.wav) 48k_voice_300-3000_2s.wav

Output Gain: 66.12

Measure Window Start: 300ms

Measure Window Length: 2000ms

BWC applied: 10.8 dB

Device Reference Point: 0, 0, -6.3 mm

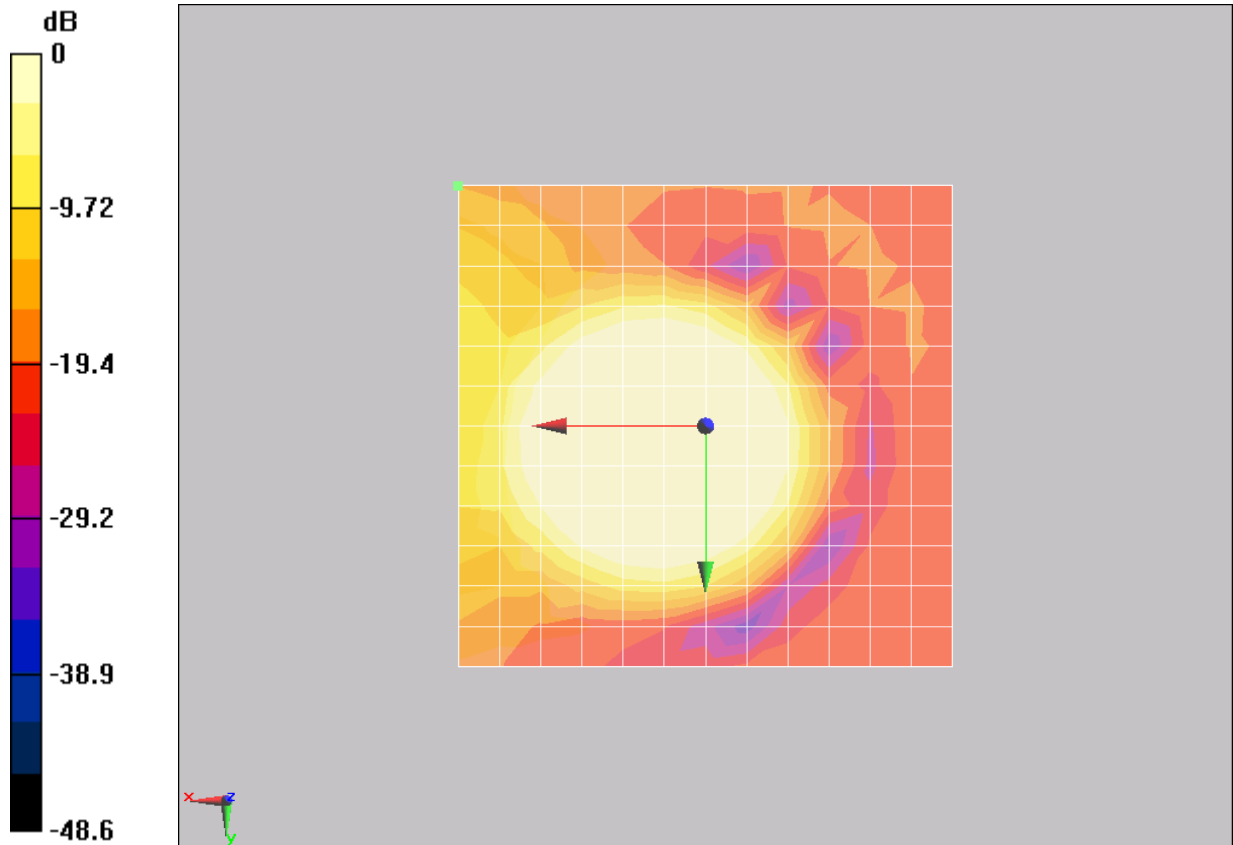
Category	Telephone parameters WD signal quality [(signal+noise)-to-noise ratio in decibels]
Category T1	0 dB to 10 dB
Category T2	10 dB to 20 dB
Category T3	20 dB to 30 dB
Category T4	> 30 dB

Cursor:

Diff = 1.56 dB

BWC Factor = 10.8 dB

Location: -8.3, 4.2, 3.7 mm



0 dB = 1A/m

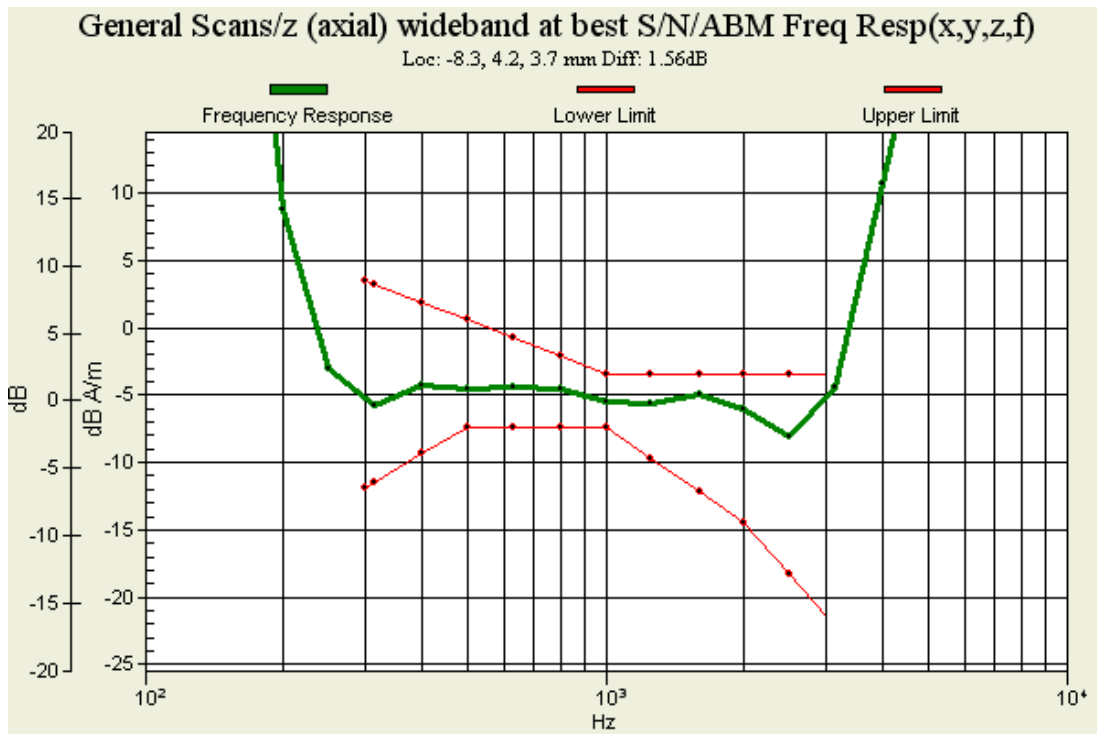


Figure 13 T-Coil GSM 850 Z Axial

TA Technology (Shanghai) Co., Ltd.
Test Report

Report No. RXA1307-0093HAC02

Page 37 of 74

T-Coil GSM 1900 X longitudinal

Date/Time: 7/18/2013 4:40:42 PM

Communication System: GSM; Frequency: 1880 MHz; Duty Cycle: 1:8.30042

Medium parameters used: $\sigma = 0$ mho/m, $\epsilon_r = 1$; $\rho = 1$ kg/m³

Ambient Temperature: 22.3 °C

Phantom section: TCoil Section

DASY5 Configuration:

Sensor-Surface: 4mm (Mechanical Surface Detection)

Probe: AM1DV2 - 1064; ; Calibrated: 8/29/2012

Electronics: DAE4 Sn1317; Calibrated: 1/25/2013

Phantom: HAC Test Arch with AMCC; Type: SD HAC P01 BA;

Measurement SW: DASY5, V5.2 Build 162; SEMCAD X Version 14.0 Build 59

RAV4 GSM1900 HAC_TCoil_WD_Emission/General Scans/x (longitudinal) (2007) 4.2mm 50 x 50/ABM Signal(x,y,z) (13x13x1):

Measurement grid: dx=10mm, dy=10mm

Signal Type: Audio File (.wav) 48k_voice_1kHz_1s.wav

Output Gain: 28.8

Measure Window Start: 300ms

Measure Window Length: 1000ms

BWC applied: 0.162972 dB

Device Reference Point: 0, 0, -6.3 mm

Category	Telephone parameters WD signal quality [(signal+noise)-to-noise ratio in decibels]
Category T1	0 dB to 10 dB
Category T2	10 dB to 20 dB
Category T3	20 dB to 30 dB
Category T4	> 30 dB

Cursor:

ABM1 comp = 5.4 dB A/m

BWC Factor = 0.162972 dB

Location: -4.2, 0, 3.7 mm

RAV4 GSM1900 HAC_TCoil_WD_Emission/General Scans/x (longitudinal) (2007) 4.2mm 50 x 50/ABM SNR(x,y,z) (13x13x1):

Measurement grid: dx=10mm, dy=10mm

Signal Type: Audio File (.wav) 48k_voice_1kHz_1s.wav

Output Gain: 28.8

Measure Window Start: 300ms

Measure Window Length: 1000ms

BWC applied: 0.162972 dB

TA Technology (Shanghai) Co., Ltd. Test Report

Report No. RXA1307-0093HAC02

Page 38 of 74

Device Reference Point: 0, 0, -6.3 mm

Category	Telephone parameters WD signal quality [(signal+noise)-to-noise ratio in decibels]
Category T1	0 dB to 10 dB
Category T2	10 dB to 20 dB
Category T3	20 dB to 30 dB
Category T4	> 30 dB

Cursor:

ABM1/ABM2 = 23.7 dB

ABM1 comp = 3.67 dB A/m

BWC Factor = 0.162972 dB

Location: -8.3, 0, 3.7 mm

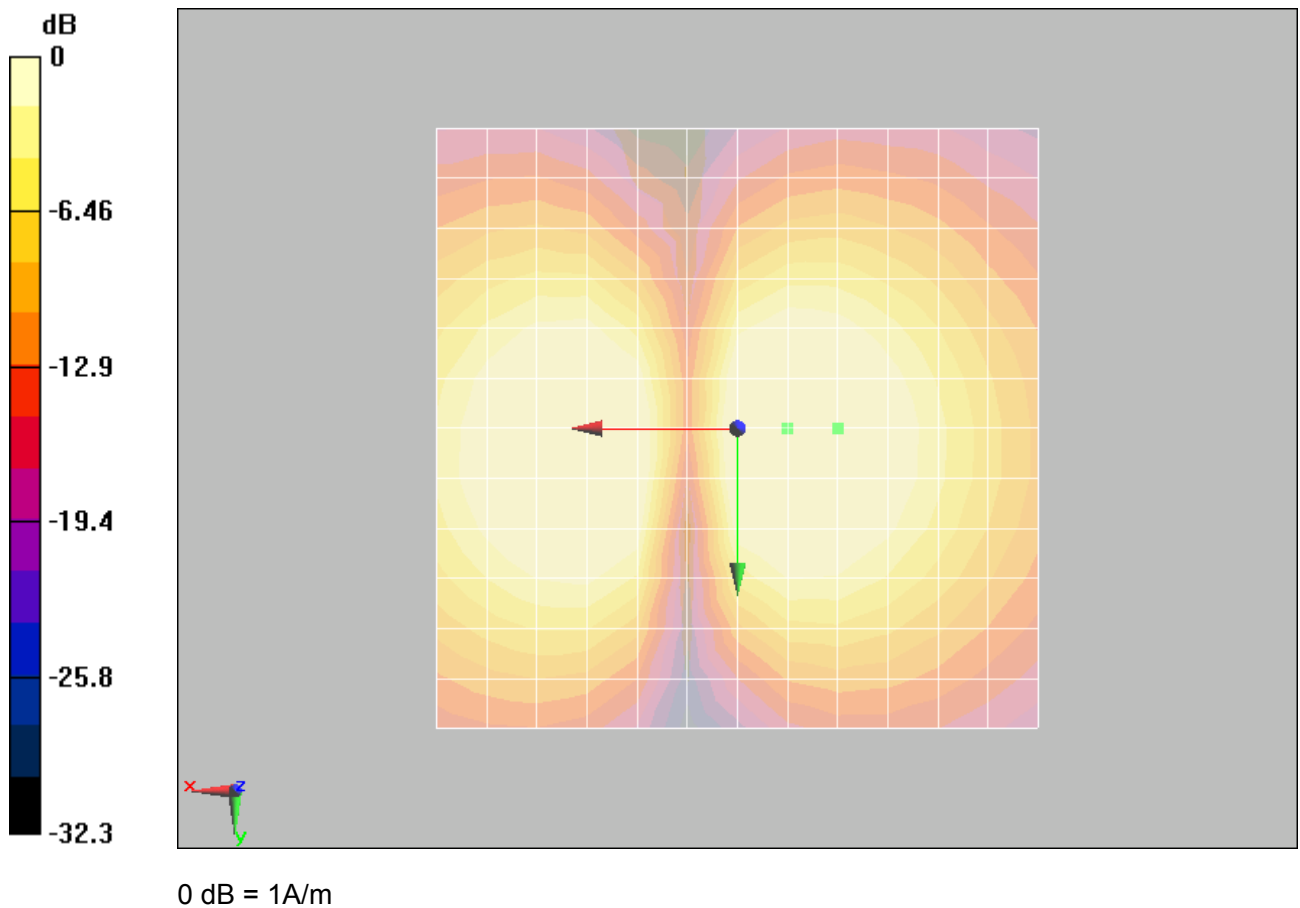


Figure 14 T-Coil GSM 1900 X longitudinal

TA Technology (Shanghai) Co., Ltd.
Test Report

Report No. RXA1307-0093HAC02

Page 39 of 74

T-Coil GSM 1900 Y transversal

Date/Time: 7/18/2013 4:24:02 PM

Communication System: GSM; Frequency: 1880 MHz; Duty Cycle: 1:8.30042

Medium parameters used: $\sigma = 0$ mho/m, $\epsilon_r = 1$; $\rho = 1$ kg/m³

Ambient Temperature: 22.3 °C

Phantom section: TCoil Section

DASY5 Configuration:

Sensor-Surface: 4mm (Mechanical Surface Detection)

Probe: AM1DV2 - 1064; ; Calibrated: 8/29/2012

Electronics: DAE4 Sn1317; Calibrated: 1/25/2013

Phantom: HAC Test Arch with AMCC; Type: SD HAC P01 BA;

Measurement SW: DASY5, V5.2 Build 162; SEMCAD X Version 14.0 Build 59

RAV4 GSM1900 HAC_TCoil_WD_Emission/General Scans/y (transversal) 4.2mm 50 x 50/ABM

Signal(x,y,z) (13x13x1):

Measurement grid: dx=10mm, dy=10mm

Signal Type: Audio File (.wav) 48k_voice_1kHz_1s.wav

Output Gain: 28.8

Measure Window Start: 300ms

Measure Window Length: 1000ms

BWC applied: 0.162972 dB

Device Reference Point: 0, 0, -6.3 mm

Category	Telephone parameters WD signal quality [(signal+noise)-to-noise ratio in decibels]
Category T1	0 dB to 10 dB
Category T2	10 dB to 20 dB
Category T3	20 dB to 30 dB
Category T4	> 30 dB

Cursor:

ABM1 comp = 5.66 dB A/m

BWC Factor = 0.162972 dB

Location: 4.2, -4.2, 3.7 mm

RAV4 GSM1900 HAC_TCoil_WD_Emission/General Scans/y (transversal) 4.2mm 50 x 50/ABM

SNR(x,y,z) (13x13x1):

Measurement grid: dx=10mm, dy=10mm

Signal Type: Audio File (.wav) 48k_voice_1kHz_1s.wav

Output Gain: 28.8

Measure Window Start: 300ms

Measure Window Length: 1000ms

BWC applied: 0.162972 dB

Device Reference Point: 0, 0, -6.3 mm

TA Technology (Shanghai) Co., Ltd. Test Report

Category	Telephone parameters WD signal quality [(signal+noise)-to-noise ratio in decibels]
Category T1	0 dB to 10 dB
Category T2	10 dB to 20 dB
Category T3	20 dB to 30 dB
Category T4	> 30 dB

Cursor:

ABM1/ABM2 = 40.7 dB

ABM1 comp = -0.537 dB A/m

BWC Factor = 0.162972 dB

Location: 4.2, 0, 3.7 mm

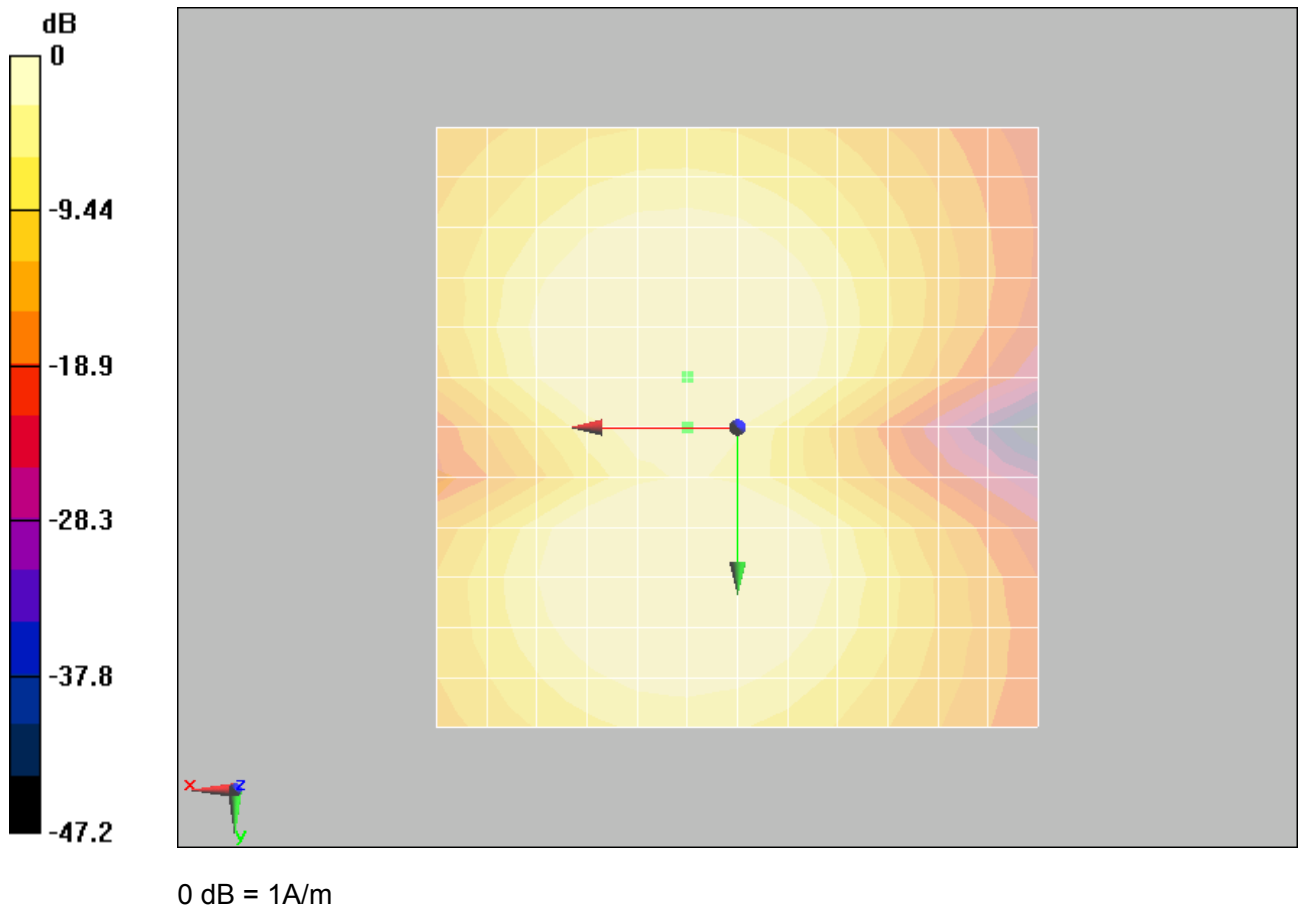


Figure 15 T-Coil GSM 1900 Y transversal

TA Technology (Shanghai) Co., Ltd.

Test Report

Report No. RXA1307-0093HAC02

Page 41 of 74

T-Coil GSM 1900 Z Axial

Date/Time: 7/18/2013 4:07:24 PM, Date/Time: 7/18/2013 4:57:24 PM

Communication System: GSM; Frequency: 1880 MHz; Duty Cycle: 1:8.30042

Medium parameters used: $\sigma = 0$ mho/m, $\epsilon_r = 1$; $\rho = 1$ kg/m³

Ambient Temperature: 22.3 °C

Phantom section: TCoil Section

DASY5 Configuration:

Sensor-Surface: 4mm (Mechanical Surface Detection)

Probe: AM1DV2 - 1064; ; Calibrated: 8/29/2012

Electronics: DAE4 Sn1317; Calibrated: 1/25/2013

Phantom: HAC Test Arch with AMCC; Type: SD HAC P01 BA;

Measurement SW: DASY5, V5.2 Build 162; SEMCAD X Version 14.0 Build 59

RAV4 GSM1900 HAC_TCoil_WD_Emission/General Scans/z (axial) 4.2mm 50 x 50/ABM

Signal(x,y,z) (13x13x1):

Measurement grid: dx=10mm, dy=10mm

Signal Type: Audio File (.wav) 48k_voice_1kHz_1s.wav

Output Gain: 28.8

Measure Window Start: 300ms

Measure Window Length: 1000ms

BWC applied: 0.162972 dB

Device Reference Point: 0, 0, -6.3 mm

Category	Telephone parameters WD signal quality [(signal+noise)-to-noise ratio in decibels]
Category T1	0 dB to 10 dB
Category T2	10 dB to 20 dB
Category T3	20 dB to 30 dB
Category T4	> 30 dB

Cursor:

ABM1 comp = 13.6 dB A/m

BWC Factor = 0.162972 dB

Location: 4.2, 0, 3.7 mm

RAV4 GSM1900 HAC_TCoil_WD_Emission/General Scans/z (axial) 4.2mm 50 x 50/ABM

SNR(x,y,z) (13x13x1):

Measurement grid: dx=10mm, dy=10mm

Signal Type: Audio File (.wav) 48k_voice_1kHz_1s.wav

Output Gain: 28.8

Measure Window Start: 300ms

Measure Window Length: 1000ms

BWC applied: 0.162972 dB

TA Technology (Shanghai) Co., Ltd.
Test Report

Report No. RXA1307-0093HAC02

Page 42 of 74

Device Reference Point: 0, 0, -6.3 mm

Category	Telephone parameters WD signal quality [(signal+noise)-to-noise ratio in decibels]
Category T1	0 dB to 10 dB
Category T2	10 dB to 20 dB
Category T3	20 dB to 30 dB
Category T4	> 30 dB

Cursor:

ABM1/ABM2 = 38.6 dB

ABM1 comp = -3.48 dB A/m

BWC Factor = 0.162972 dB

Location: -8.3, 0, 3.7 mm

RAV4 GSM1900 HAC_TCoil_WD_Emission/General Scans/z (axial) wideband at best S/N/ABM Freq Resp(x,y,z,f) (1x1x1):

Measurement grid: dx=10mm, dy=10mm

Signal Type: Audio File (.wav) 48k_voice_300-3000_2s.wav

Output Gain: 56.4

Measure Window Start: 300ms

Measure Window Length: 2000ms

BWC applied: 10.8 dB

Device Reference Point: 0, 0, -6.3 mm

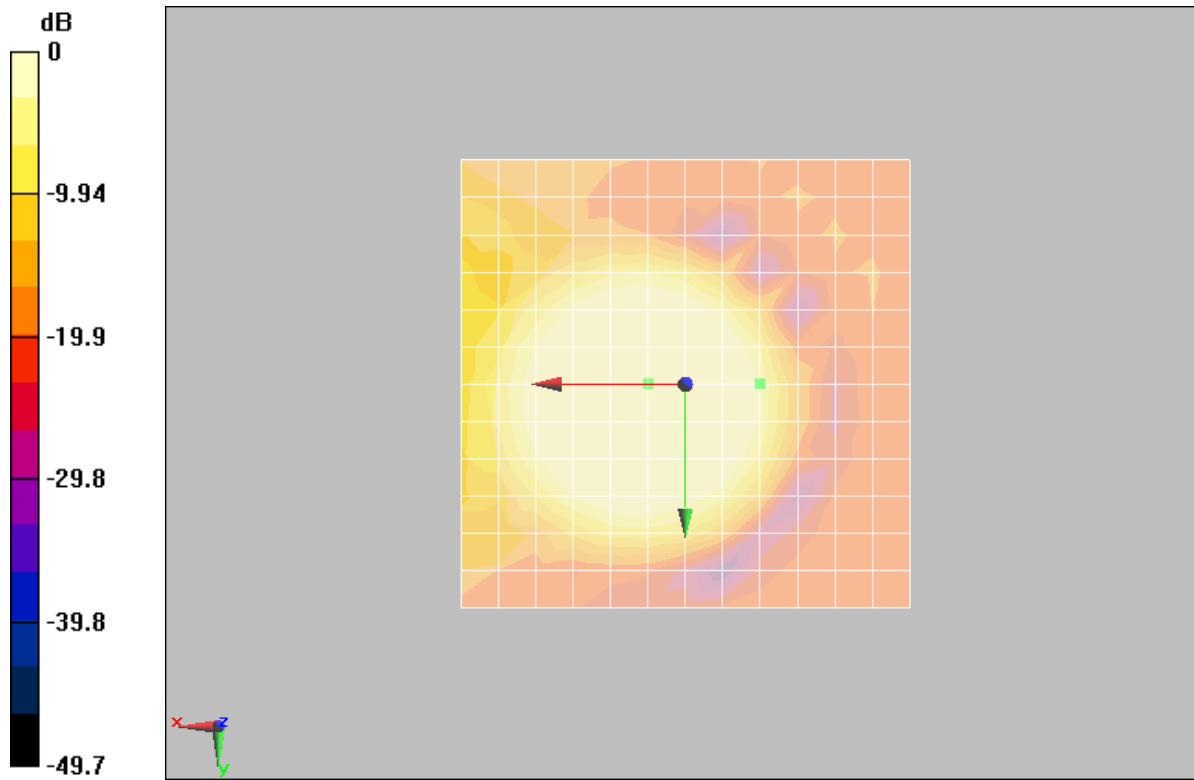
Category	Telephone parameters WD signal quality [(signal+noise)-to-noise ratio in decibels]
Category T1	0 dB to 10 dB
Category T2	10 dB to 20 dB
Category T3	20 dB to 30 dB
Category T4	> 30 dB

Cursor:

Diff = 2 dB

BWC Factor = 10.8 dB

Location: -8.3, 0, 3.7 mm



0 dB = 1A/m

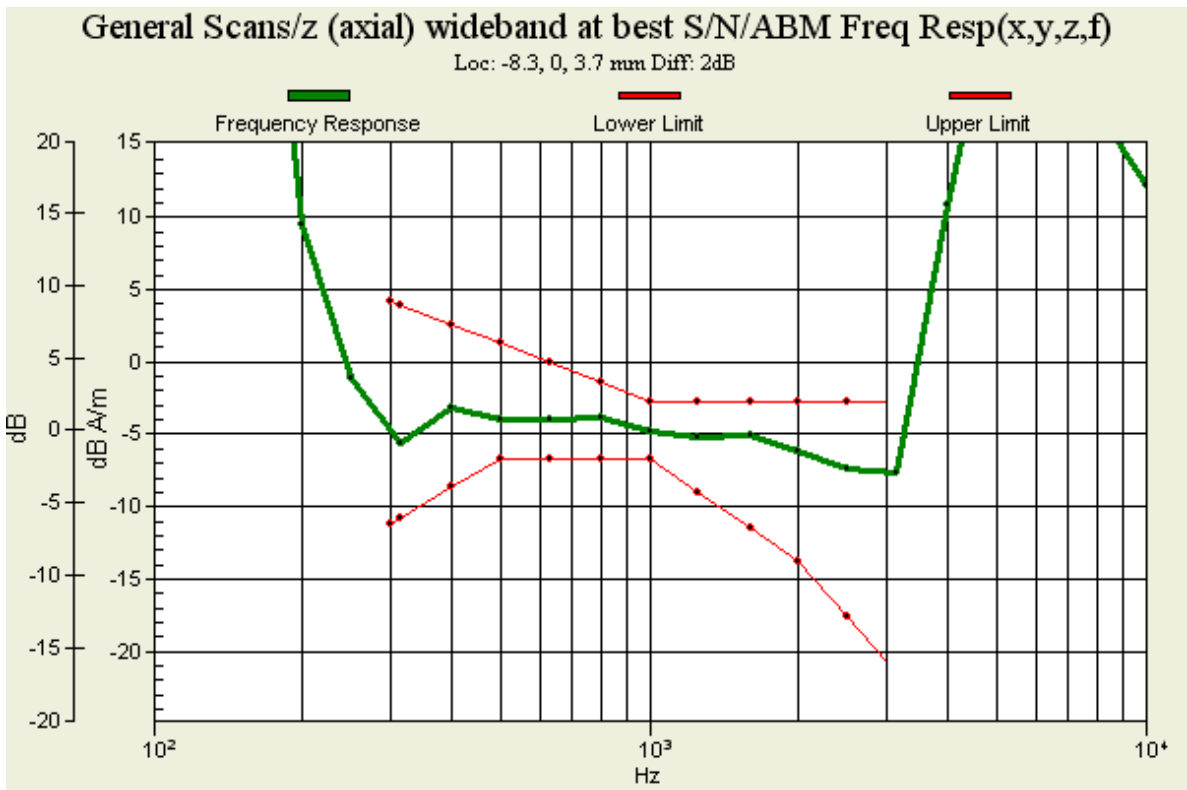


Figure 16 T-Coil GSM 1900 Z Axial

TA Technology (Shanghai) Co., Ltd.
Test Report

Report No. RXA1307-0093HAC02

Page 44 of 74

T-Coil WCDMA Band II X longitudinal

Date/Time: 7/18/2013 8:57:34 PM

Communication System: WCDMA ; Frequency: 1880 MHz;Duty Cycle: 1:1

Medium parameters used: $\sigma = 0$ mho/m, $\epsilon_r = 1$; $\rho = 1$ kg/m³

Ambient Temperature:22.3 °C

Phantom section: TCoil Section

DASY5 Configuration:

Sensor-Surface: 4mm (Mechanical Surface Detection)

Probe: AM1DV2 - 1064; ; Calibrated: 8/29/2012

Electronics: DAE4 Sn1317; Calibrated: 1/25/2013

Phantom: HAC Test Arch with AMCC; Type: SD HAC P01 BA;

Measurement SW: DASY5, V5.2 Build 162; SEMCAD X Version 14.0 Build 59

Megane USA WCDMA II HAC_TCoil_WD_Emission/General Scans/x (longitudinal) (2007)
4.2mm 50 x 50/ABM Signal(x,y,z) (13x13x1):

Measurement grid: dx=10mm, dy=10mm

Signal Type: Audio File (.wav) 48k_voice_1kHz_1s.wav

Output Gain: 28.8

Measure Window Start: 300ms

Measure Window Length: 1000ms

BWC applied: 0.162972 dB

Device Reference Point: 0, 0, -6.3 mm

Category	Telephone parameters WD signal quality [(signal+noise)-to-noise ratio in decibels]
Category T1	0 dB to 10 dB
Category T2	10 dB to 20 dB
Category T3	20 dB to 30 dB
Category T4	> 30 dB

Cursor:

ABM1 comp = 5.82 dB A/m

BWC Factor = 0.162972 dB

Location: -4.2, 0, 3.7 mm

Megane USA WCDMA II HAC_TCoil_WD_Emission/General Scans/x (longitudinal) (2007)
4.2mm 50 x 50/ABM SNR(x,y,z) (13x13x1):

Measurement grid: dx=10mm, dy=10mm

Signal Type: Audio File (.wav) 48k_voice_1kHz_1s.wav

Output Gain: 28.8

Measure Window Start: 300ms

Measure Window Length: 1000ms

BWC applied: 0.162972 dB

TA Technology (Shanghai) Co., Ltd. Test Report

Device Reference Point: 0, 0, -6.3 mm

Category	Telephone parameters WD signal quality [(signal+noise)-to-noise ratio in decibels]
Category T1	0 dB to 10 dB
Category T2	10 dB to 20 dB
Category T3	20 dB to 30 dB
Category T4	> 30 dB

Cursor:

ABM1/ABM2 = 50.1 dB

ABM1 comp = 5.31 dB A/m

BWC Factor = 0.162972 dB

Location: 12.5, 0, 3.7 mm

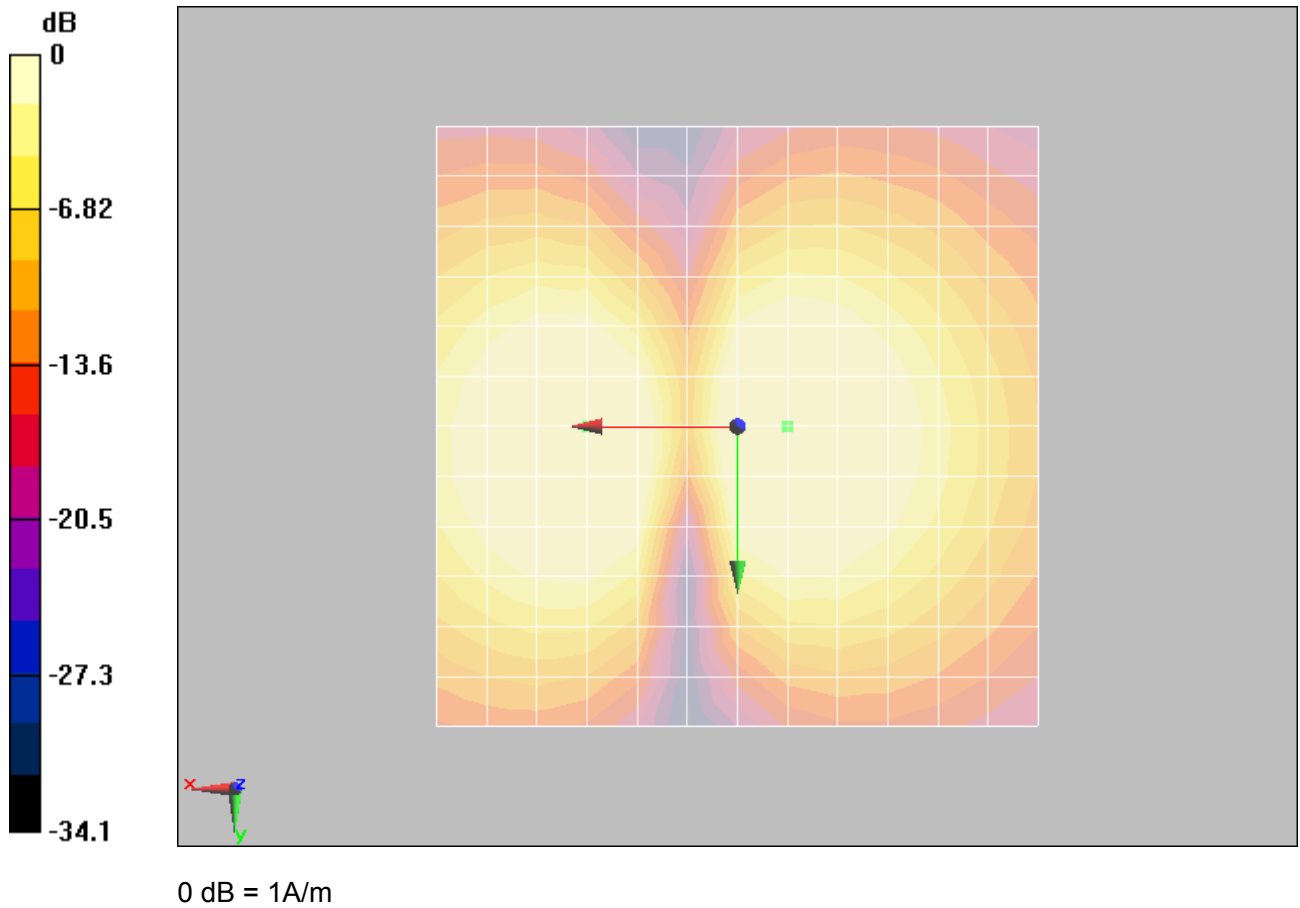


Figure 17 T-Coil WCDMA Band II X longitudinal

TA Technology (Shanghai) Co., Ltd.
Test Report

Report No. RXA1307-0093HAC02

Page 46 of 74

T-Coil WCDMA Band II Y transversal

Date/Time: 7/18/2013 8:40:53 PM

Communication System: WCDMA ; Frequency: 1880 MHz;Duty Cycle: 1:1

Medium parameters used: $\sigma = 0$ mho/m, $\epsilon_r = 1$; $\rho = 1$ kg/m³

Ambient Temperature:22.3 °C

Phantom section: TCoil Section

DASY5 Configuration:

Sensor-Surface: 4mm (Mechanical Surface Detection)

Probe: AM1DV2 - 1064; ; Calibrated: 8/29/2012

Electronics: DAE4 Sn1317; Calibrated: 1/25/2013

Phantom: HAC Test Arch with AMCC; Type: SD HAC P01 BA;

Measurement SW: DASY5, V5.2 Build 162; SEMCAD X Version 14.0 Build 59

Megane USA WCDMA II HAC_TCoil_WD_Emission/General Scans/y (transversal) 4.2mm 50 x 50/ABM Signal(x,y,z) (13x13x1):

Measurement grid: dx=10mm, dy=10mm

Signal Type: Audio File (.wav) 48k_voice_1kHz_1s.wav

Output Gain: 28.8

Measure Window Start: 300ms

Measure Window Length: 1000ms

BWC applied: 0.162972 dB

Device Reference Point: 0, 0, -6.3 mm

Category	Telephone parameters WD signal quality [(signal+noise)-to-noise ratio in decibels]
Category T1	0 dB to 10 dB
Category T2	10 dB to 20 dB
Category T3	20 dB to 30 dB
Category T4	> 30 dB

Cursor:

ABM1 comp = 6.04 dB A/m

BWC Factor = 0.162972 dB

Location: 4.2, -4.2, 3.7 mm

Megane USA WCDMA II HAC_TCoil_WD_Emission/General Scans/y (transversal) 4.2mm 50 x 50/ABM SNR(x,y,z) (13x13x1):

Measurement grid: dx=10mm, dy=10mm

Signal Type: Audio File (.wav) 48k_voice_1kHz_1s.wav

Output Gain: 28.8

Measure Window Start: 300ms

Measure Window Length: 1000ms

BWC applied: 0.162972 dB

TA Technology (Shanghai) Co., Ltd. Test Report

Device Reference Point: 0, 0, -6.3 mm

Category	Telephone parameters WD signal quality [(signal+noise)-to-noise ratio in decibels]
Category T1	0 dB to 10 dB
Category T2	10 dB to 20 dB
Category T3	20 dB to 30 dB
Category T4	> 30 dB

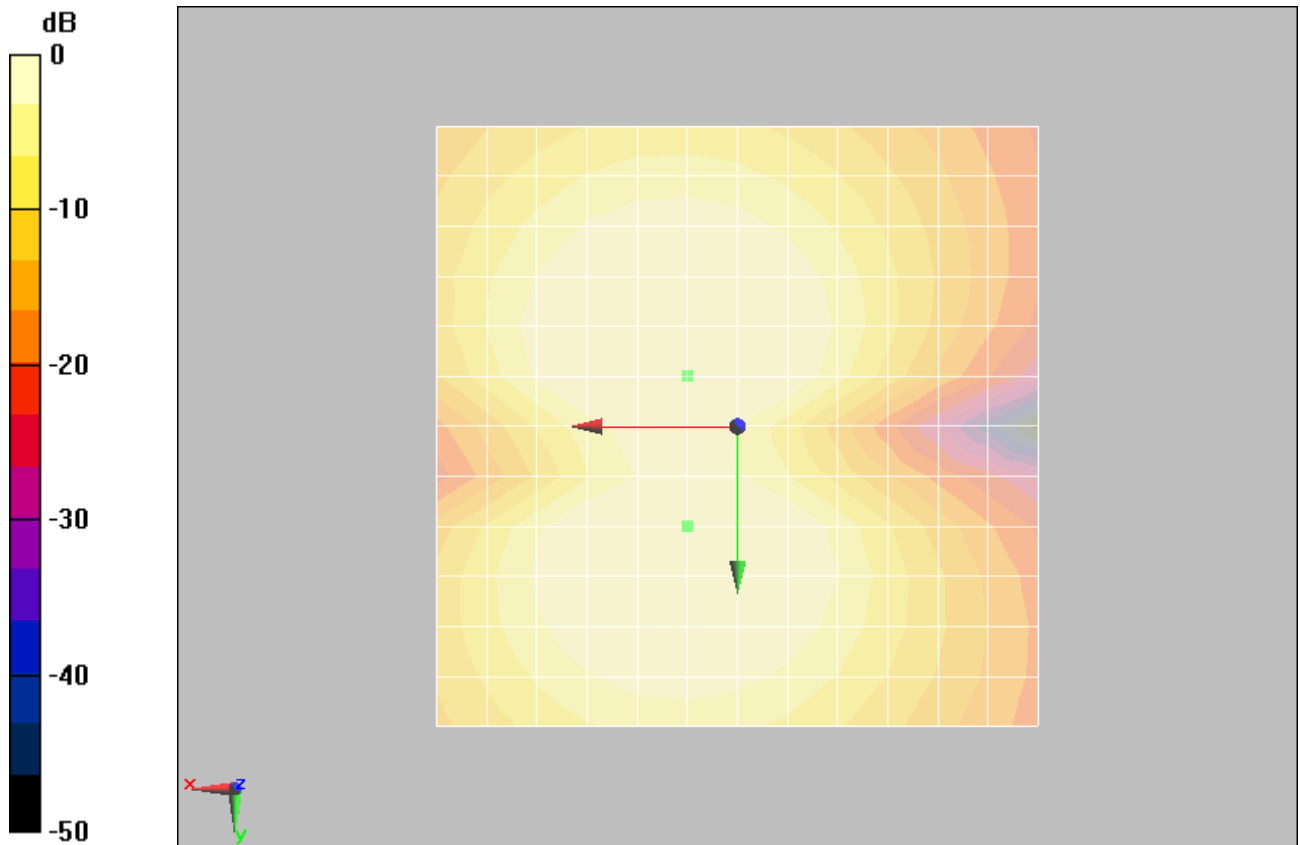
Cursor:

ABM1/ABM2 = 58 dB

ABM1 comp = 5.28 dB A/m

BWC Factor = 0.162972 dB

Location: 4.2, 8.3, 3.7 mm



0 dB = 1A/m

Figure 18 T-Coil WCDMA Band II Y transversal

TA Technology (Shanghai) Co., Ltd.
Test Report

Report No. RXA1307-0093HAC02

Page 48 of 74

T-Coil WCDMA Band II Z Axial

Date/Time: 7/18/2013 8:24:15 PM, Date/Time: 7/18/2013 9:14:16 PM

Communication System: WCDMA ; Frequency: 1880 MHz;Duty Cycle: 1:1

Medium parameters used: $\sigma = 0$ mho/m, $\epsilon_r = 1$; $\rho = 1$ kg/m³

Ambient Temperature:22.3 °C

Phantom section: TCoil Section

DASY5 Configuration:

Sensor-Surface: 4mm (Mechanical Surface Detection)

Probe: AM1DV2 - 1064; ; Calibrated: 8/29/2012

Electronics: DAE4 Sn1317; Calibrated: 1/25/2013

Phantom: HAC Test Arch with AMCC; Type: SD HAC P01 BA;

Measurement SW: DASY5, V5.2 Build 162; SEMCAD X Version 14.0 Build 59

Megane USA WCDMA II HAC_TCoil_WD_Emission/General Scans/z (axial) 4.2mm 50 x 50/ABM

Signal(x,y,z) (13x13x1):

Measurement grid: dx=10mm, dy=10mm

Signal Type: Audio File (.wav) 48k_voice_1kHz_1s.wav

Output Gain: 28.8

Measure Window Start: 300ms

Measure Window Length: 1000ms

BWC applied: 0.162972 dB

Device Reference Point: 0, 0, -6.3 mm

Category	Telephone parameters WD signal quality [(signal+noise)-to-noise ratio in decibels]
Category T1	0 dB to 10 dB
Category T2	10 dB to 20 dB
Category T3	20 dB to 30 dB
Category T4	> 30 dB

Cursor:

ABM1 comp = 14.1 dB A/m

BWC Factor = 0.162972 dB

Location: 4.2, 0, 3.7 mm

Megane USA WCDMA II HAC_TCoil_WD_Emission/General Scans/z (axial) 4.2mm 50 x 50/ABM

SNR(x,y,z) (13x13x1):

Measurement grid: dx=10mm, dy=10mm

Signal Type: Audio File (.wav) 48k_voice_1kHz_1s.wav

Output Gain: 28.8

Measure Window Start: 300ms

Measure Window Length: 1000ms

BWC applied: 0.162972 dB

Device Reference Point: 0, 0, -6.3 mm

TA Technology (Shanghai) Co., Ltd.
Test Report

Report No. RXA1307-0093HAC02

Page 49 of 74

Category	Telephone parameters WD signal quality [(signal+noise)-to-noise ratio in decibels]
Category T1	0 dB to 10 dB
Category T2	10 dB to 20 dB
Category T3	20 dB to 30 dB
Category T4	> 30 dB

Cursor:

ABM1/ABM2 = 52.1 dB

ABM1 comp = 14.1 dB A/m

BWC Factor = 0.162972 dB

Location: 4.2, 0, 3.7 mm

Megane USA WCDMA II HAC_TCoil_WD_Emission/General Scans/z (axial) wideband at best S/N/ABM Freq Resp(x,y,z,f) (1x1x1):

Measurement grid: dx=10mm, dy=10mm

Signal Type: Audio File (.wav) 48k_voice_300-3000_2s.wav

Output Gain: 56.4

Measure Window Start: 300ms

Measure Window Length: 2000ms

BWC applied: 10.8 dB

Device Reference Point: 0, 0, -6.3 mm

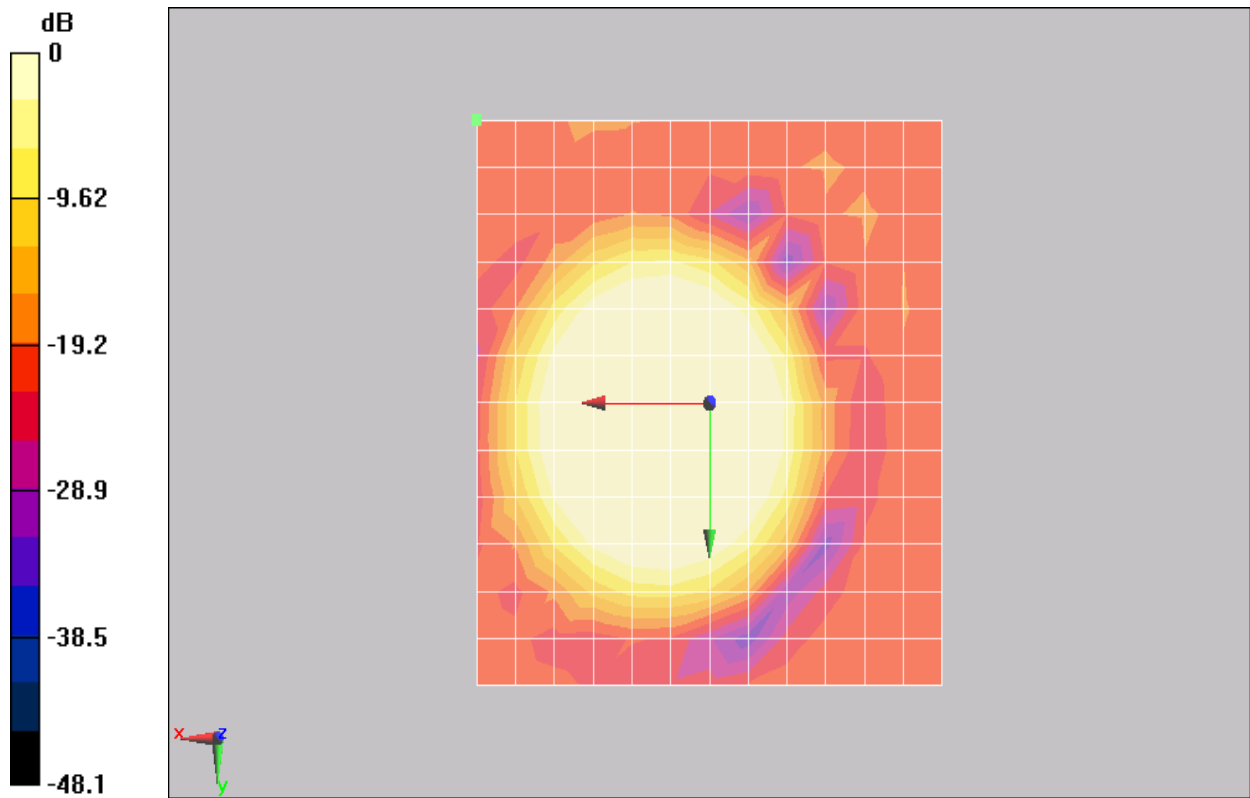
Category	Telephone parameters WD signal quality [(signal+noise)-to-noise ratio in decibels]
Category T1	0 dB to 10 dB
Category T2	10 dB to 20 dB
Category T3	20 dB to 30 dB
Category T4	> 30 dB

Cursor:

Diff = 0.825 dB

BWC Factor = 10.8 dB

Location: 4.2, 0, 3.7 mm



0 dB = 1A/m

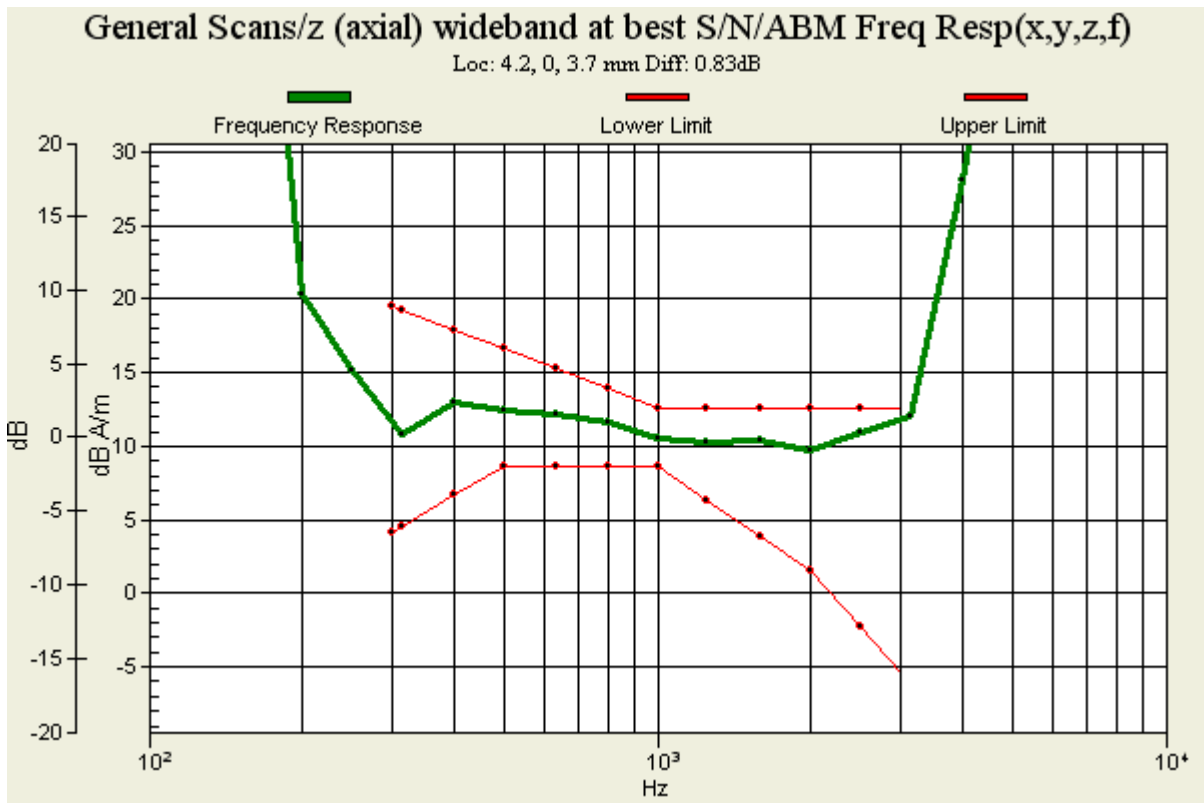


Figure 19 T-Coil WCDMA Band II Z Axial

TA Technology (Shanghai) Co., Ltd.
Test Report

Report No. RXA1307-0093HAC02

Page 51 of 74

T-Coil WCDMA Band IV X longitudinal

Date/Time: 7/18/2013 9:48:19 PM

Communication System: WCDMA ; Frequency: 1732.6 MHz;Duty Cycle: 1:1

Medium parameters used: $\sigma = 0$ mho/m, $\epsilon_r = 1$; $\rho = 1$ kg/m³

Ambient Temperature:22.3 °C

Phantom section: TCoil Section

DASY5 Configuration:

Sensor-Surface: 4mm (Mechanical Surface Detection)

Probe: AM1DV2 - 1064; ; Calibrated: 8/29/2012

Electronics: DAE4 Sn1317; Calibrated: 1/25/2013

Phantom: HAC Test Arch with AMCC; Type: SD HAC P01 BA;

Measurement SW: DASY5, V5.2 Build 162; SEMCAD X Version 14.0 Build 59

Megane USA WCDMA IV HAC_TCoil_WD_Emission/General Scans/x (longitudinal) (2007)

4.2mm 50 x 50/ABM Signal(x,y,z) (13x13x1):

Measurement grid: dx=10mm, dy=10mm

Signal Type: Audio File (.wav) 48k_voice_1kHz_1s.wav

Output Gain: 28.8

Measure Window Start: 300ms

Measure Window Length: 1000ms

BWC applied: 0.162972 dB

Device Reference Point: 0, 0, -6.3 mm

Category	Telephone parameters WD signal quality [(signal+noise)-to-noise ratio in decibels]
Category T1	0 dB to 10 dB
Category T2	10 dB to 20 dB
Category T3	20 dB to 30 dB
Category T4	> 30 dB

Cursor:

ABM1 comp = 5.53 dB A/m

BWC Factor = 0.162972 dB

Location: -4.2, 0, 3.7 mm

Megane USA WCDMA IV HAC_TCoil_WD_Emission/General Scans/x (longitudinal) (2007)

4.2mm 50 x 50/ABM SNR(x,y,z) (13x13x1):

Measurement grid: dx=10mm, dy=10mm

Signal Type: Audio File (.wav) 48k_voice_1kHz_1s.wav

Output Gain: 28.8

Measure Window Start: 300ms

Measure Window Length: 1000ms

BWC applied: 0.162972 dB

Device Reference Point: 0, 0, -6.3 mm

TA Technology (Shanghai) Co., Ltd. Test Report

Category	Telephone parameters WD signal quality [(signal+noise)-to-noise ratio in decibels]
Category T1	0 dB to 10 dB
Category T2	10 dB to 20 dB
Category T3	20 dB to 30 dB
Category T4	> 30 dB

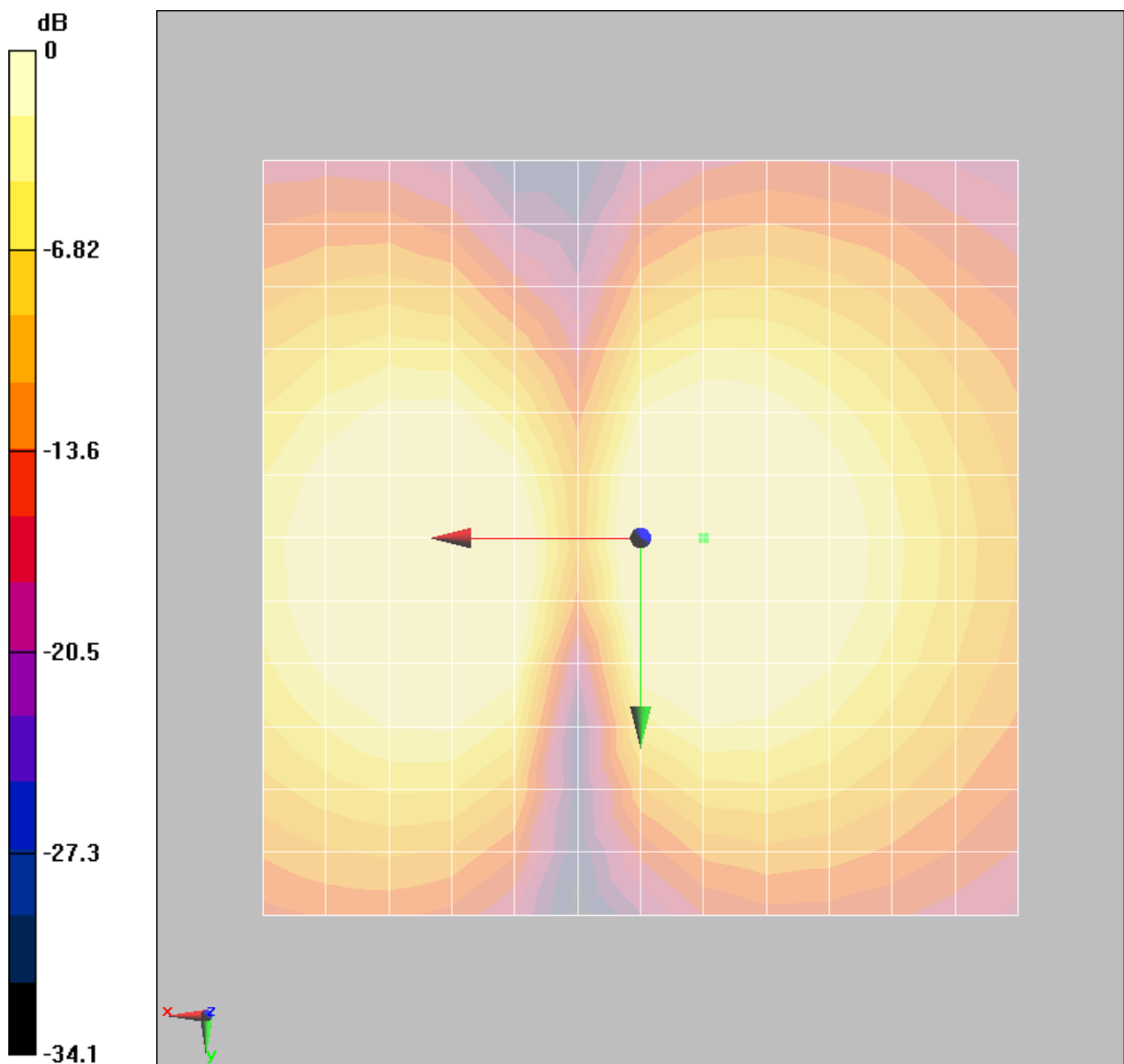
Cursor:

ABM1/ABM2 = 49.9 dB

ABM1 comp = 5.02 dB A/m

BWC Factor = 0.162972 dB

Location: 12.5, 0, 3.7 mm



0 dB = 1A/m

Figure 20 T-Coil WCDMA Band IV X longitudinal

TA Technology (Shanghai) Co., Ltd.

Test Report

Report No. RXA1307-0093HAC02

Page 53 of 74

T-Coil WCDMA Band IV Y transversal

Date/Time: 7/18/2013 9:32:41 PM

Communication System: WCDMA ; Frequency: 1732.6 MHz;Duty Cycle: 1:1

Medium parameters used: $\sigma = 0$ mho/m, $\epsilon_r = 1$; $\rho = 1$ kg/m³

Ambient Temperature:22.3 °C

Phantom section: TCoil Section

DASY5 Configuration:

Sensor-Surface: 4mm (Mechanical Surface Detection)

Probe: AM1DV2 - 1064; ; Calibrated: 8/29/2012

Electronics: DAE4 Sn1317; Calibrated: 1/25/2013

Phantom: HAC Test Arch with AMCC; Type: SD HAC P01 BA;

Measurement SW: DASY5, V5.2 Build 162; SEMCAD X Version 14.0 Build 59

Megane USA WCDMA IV HAC_TCoil_WD_Emission/General Scans/y (transversal) 4.2mm 50 x 50/ABM Signal(x,y,z) (13x13x1):

Measurement grid: dx=10mm, dy=10mm

Signal Type: Audio File (.wav) 48k_voice_1kHz_1s.wav

Output Gain: 28.8

Measure Window Start: 300ms

Measure Window Length: 1000ms

BWC applied: 0.162972 dB

Device Reference Point: 0, 0, -6.3 mm

Category	Telephone parameters WD signal quality [(signal+noise)-to-noise ratio in decibels]
Category T1	0 dB to 10 dB
Category T2	10 dB to 20 dB
Category T3	20 dB to 30 dB
Category T4	> 30 dB

Cursor:

ABM1 comp = 5.65 dB A/m

BWC Factor = 0.162972 dB

Location: 4.2, -4.2, 3.7 mm

Megane USA WCDMA IV HAC_TCoil_WD_Emission/General Scans/y (transversal) 4.2mm 50 x 50/ABM SNR(x,y,z) (13x13x1):

Measurement grid: dx=10mm, dy=10mm

Signal Type: Audio File (.wav) 48k_voice_1kHz_1s.wav

Output Gain: 28.8

Measure Window Start: 300ms

Measure Window Length: 1000ms

BWC applied: 0.162972 dB

Device Reference Point: 0, 0, -6.3 mm

TA Technology (Shanghai) Co., Ltd. Test Report

Report No. RXA1307-0093HAC02

Page 54 of 74

Category	Telephone parameters WD signal quality [(signal+noise)-to-noise ratio in decibels]
Category T1	0 dB to 10 dB
Category T2	10 dB to 20 dB
Category T3	20 dB to 30 dB
Category T4	> 30 dB

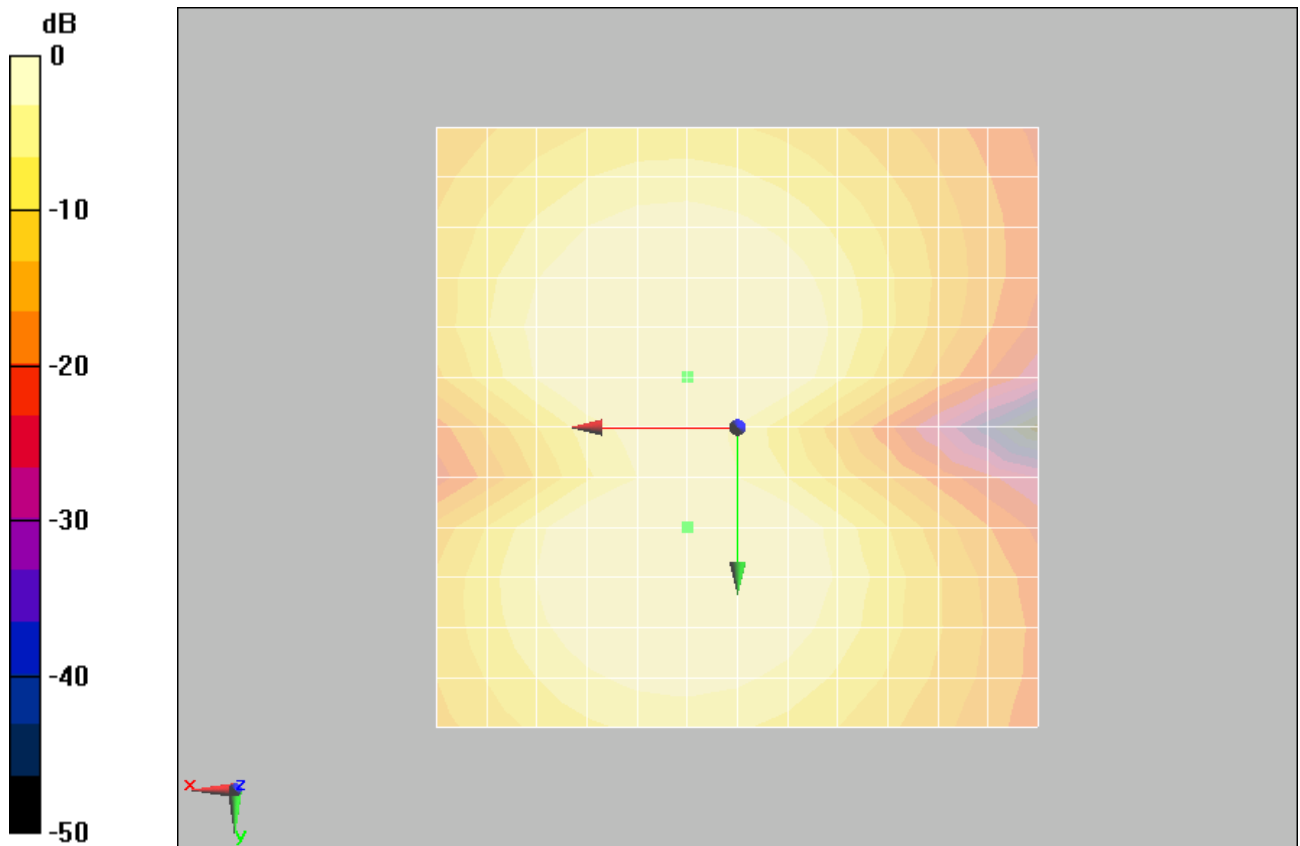
Cursor:

ABM1/ABM2 = 57.3 dB

ABM1 comp = 4.94 dB A/m

BWC Factor = 0.162972 dB

Location: 4.2, 8.3, 3.7 mm



0 dB = 1A/m

Figure 21 T-Coil WCDMA Band IV Y transversal

TA Technology (Shanghai) Co., Ltd.
Test Report

Report No. RXA1307-0093HAC02

Page 55 of 74

T-Coil WCDMA Band IV Z Axial

Date/Time: 7/18/2013 9:16:04 PM

Communication System: WCDMA ; Frequency: 1732.6 MHz;Duty Cycle: 1:1

Medium parameters used: $\sigma = 0$ mho/m, $\epsilon_r = 1$; $\rho = 1$ kg/m³

Ambient Temperature:22.3 °C

Phantom section: TCoil Section

DASY5 Configuration:

Sensor-Surface: 4mm (Mechanical Surface Detection)

Probe: AM1DV2 - 1064; ; Calibrated: 8/29/2012

Electronics: DAE4 Sn1317; Calibrated: 1/25/2013

Phantom: HAC Test Arch with AMCC; Type: SD HAC P01 BA;

Measurement SW: DASY5, V5.2 Build 162; SEMCAD X Version 14.0 Build 59

Megane USA WCDMA IV HAC_TCoil_WD_Emission/General Scans/z (axial) 4.2mm 50 x 50/ABM Signal(x,y,z) (13x13x1):

Measurement grid: dx=10mm, dy=10mm

Signal Type: Audio File (.wav) 48k_voice_1kHz_1s.wav

Output Gain: 28.8

Measure Window Start: 300ms

Measure Window Length: 1000ms

BWC applied: 0.162972 dB

Device Reference Point: 0, 0, -6.3 mm

Category	Telephone parameters WD signal quality [(signal+noise)-to-noise ratio in decibels]
Category T1	0 dB to 10 dB
Category T2	10 dB to 20 dB
Category T3	20 dB to 30 dB
Category T4	> 30 dB

Cursor:

ABM1 comp = 13.6 dB A/m

BWC Factor = 0.162972 dB

Location: 4.2, 0, 3.7 mm

Megane USA WCDMA IV HAC_TCoil_WD_Emission/General Scans/z (axial) 4.2mm 50 x 50/ABM SNR(x,y,z) (13x13x1):

Measurement grid: dx=10mm, dy=10mm

Signal Type: Audio File (.wav) 48k_voice_1kHz_1s.wav

Output Gain: 28.8

Measure Window Start: 300ms

Measure Window Length: 1000ms

BWC applied: 0.162972 dB

Device Reference Point: 0, 0, -6.3 mm

TA Technology (Shanghai) Co., Ltd.
Test Report

Report No. RXA1307-0093HAC02

Page 56 of 74

Category	Telephone parameters WD signal quality [(signal+noise)-to-noise ratio in decibels]
Category T1	0 dB to 10 dB
Category T2	10 dB to 20 dB
Category T3	20 dB to 30 dB
Category T4	> 30 dB

Cursor:

ABM1/ABM2 = 52.6 dB

ABM1 comp = 10.8 dB A/m

BWC Factor = 0.162972 dB

Location: 0, 0, 3.7 mm

Megane USA WCDMA IV HAC_TCoil_WD_Emission/General Scans/z (axial) wideband at best S/N/ABM Freq Resp(x,y,z,f) (1x1x1):

Measurement grid: dx=10mm, dy=10mm

Signal Type: Audio File (.wav) 48k_voice_300-3000_2s.wav

Output Gain: 56.4

Measure Window Start: 300ms

Measure Window Length: 2000ms

BWC applied: 10.8 dB

Device Reference Point: 0, 0, -6.3 mm

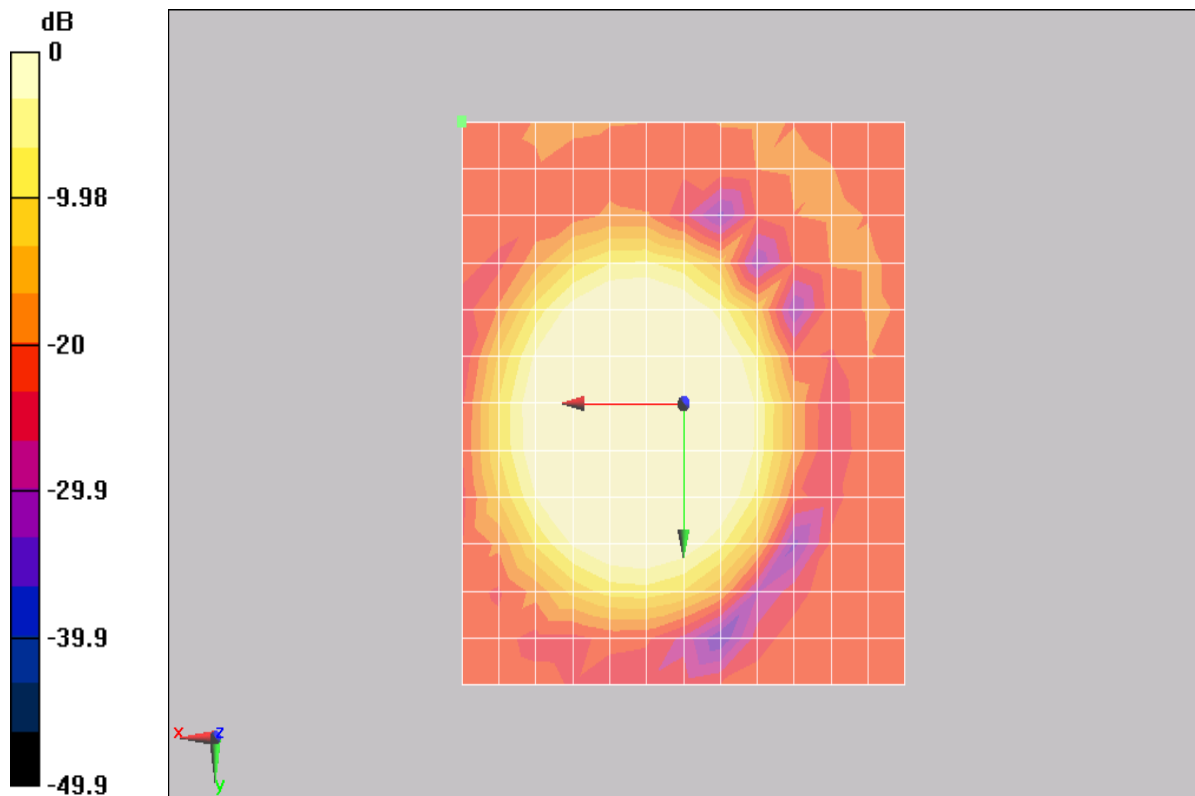
Category	Telephone parameters WD signal quality [(signal+noise)-to-noise ratio in decibels]
Category T1	0 dB to 10 dB
Category T2	10 dB to 20 dB
Category T3	20 dB to 30 dB
Category T4	> 30 dB

Cursor:

Diff = 0.893 dB

BWC Factor = 10.8 dB

Location: 0, 0, 3.7 mm



0 dB = 1A/m

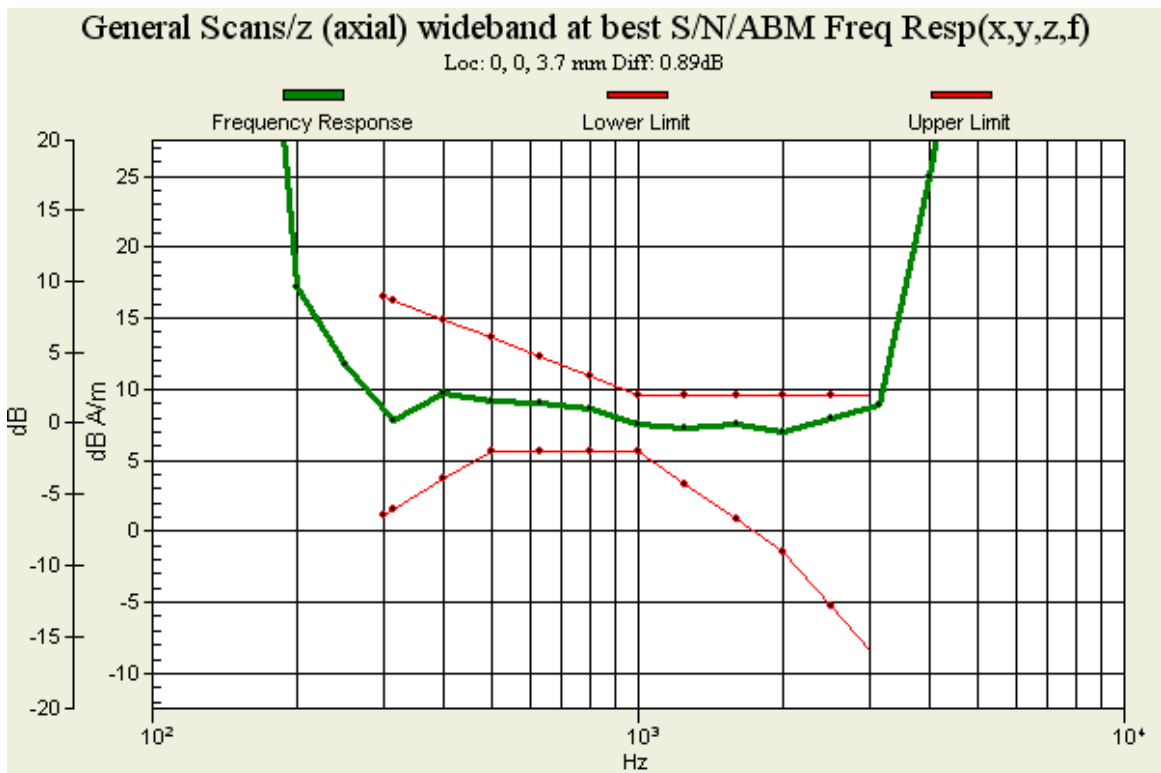


Figure 22 T-Coil WCDMA Band IV Z Axial

TA Technology (Shanghai) Co., Ltd.
Test Report

Report No. RXA1307-0093HAC02

Page 58 of 74

T-Coil WCDMA Band V X longitudinal

Date/Time: 7/18/2013 10:39:39 PM

Communication System: WCDMA ; Frequency: 836.6 MHz;Duty Cycle: 1:1

Medium parameters used: $\sigma = 0$ mho/m, $\epsilon_r = 1$; $\rho = 1$ kg/m³

Ambient Temperature:22.3 °C

Phantom section: TCoil Section

DASY5 Configuration:

Sensor-Surface: 4mm (Mechanical Surface Detection)

Probe: AM1DV2 - 1064; ; Calibrated: 8/29/2012

Electronics: DAE4 Sn1317; Calibrated: 1/25/2013

Phantom: HAC Test Arch with AMCC; Type: SD HAC P01 BA;

Measurement SW: DASY5, V5.2 Build 162; SEMCAD X Version 14.0 Build 59

Megane USA WCDMA V HAC_TCoil_WD_Emission/General Scans/x (longitudinal) (2007)

4.2mm 50 x 50/ABM Signal(x,y,z) (13x13x1):

Measurement grid: dx=10mm, dy=10mm

Signal Type: Audio File (.wav) 48k_voice_1kHz_1s.wav

Output Gain: 28.8

Measure Window Start: 300ms

Measure Window Length: 1000ms

BWC applied: 0.162972 dB

Device Reference Point: 0, 0, -6.3 mm

Category	Telephone parameters WD signal quality [(signal+noise)-to-noise ratio in decibels]
Category T1	0 dB to 10 dB
Category T2	10 dB to 20 dB
Category T3	20 dB to 30 dB
Category T4	> 30 dB

Cursor:

ABM1 comp = 5.42 dB A/m

BWC Factor = 0.162972 dB

Location: -4.2, 0, 3.7 mm

Megane USA WCDMA V HAC_TCoil_WD_Emission/General Scans/x (longitudinal) (2007)

4.2mm 50 x 50/ABM SNR(x,y,z) (13x13x1):

Measurement grid: dx=10mm, dy=10mm

Signal Type: Audio File (.wav) 48k_voice_1kHz_1s.wav

Output Gain: 28.8

Measure Window Start: 300ms

Measure Window Length: 1000ms

BWC applied: 0.162972 dB

Device Reference Point: 0, 0, -6.3 mm

TA Technology (Shanghai) Co., Ltd. Test Report

Category	Telephone parameters WD signal quality [(signal+noise)-to-noise ratio in decibels]
Category T1	0 dB to 10 dB
Category T2	10 dB to 20 dB
Category T3	20 dB to 30 dB
Category T4	> 30 dB

Cursor:

ABM1/ABM2 = 50.2 dB

ABM1 comp = 4.91 dB A/m

BWC Factor = 0.162972 dB

Location: 12.5, 0, 3.7 mm

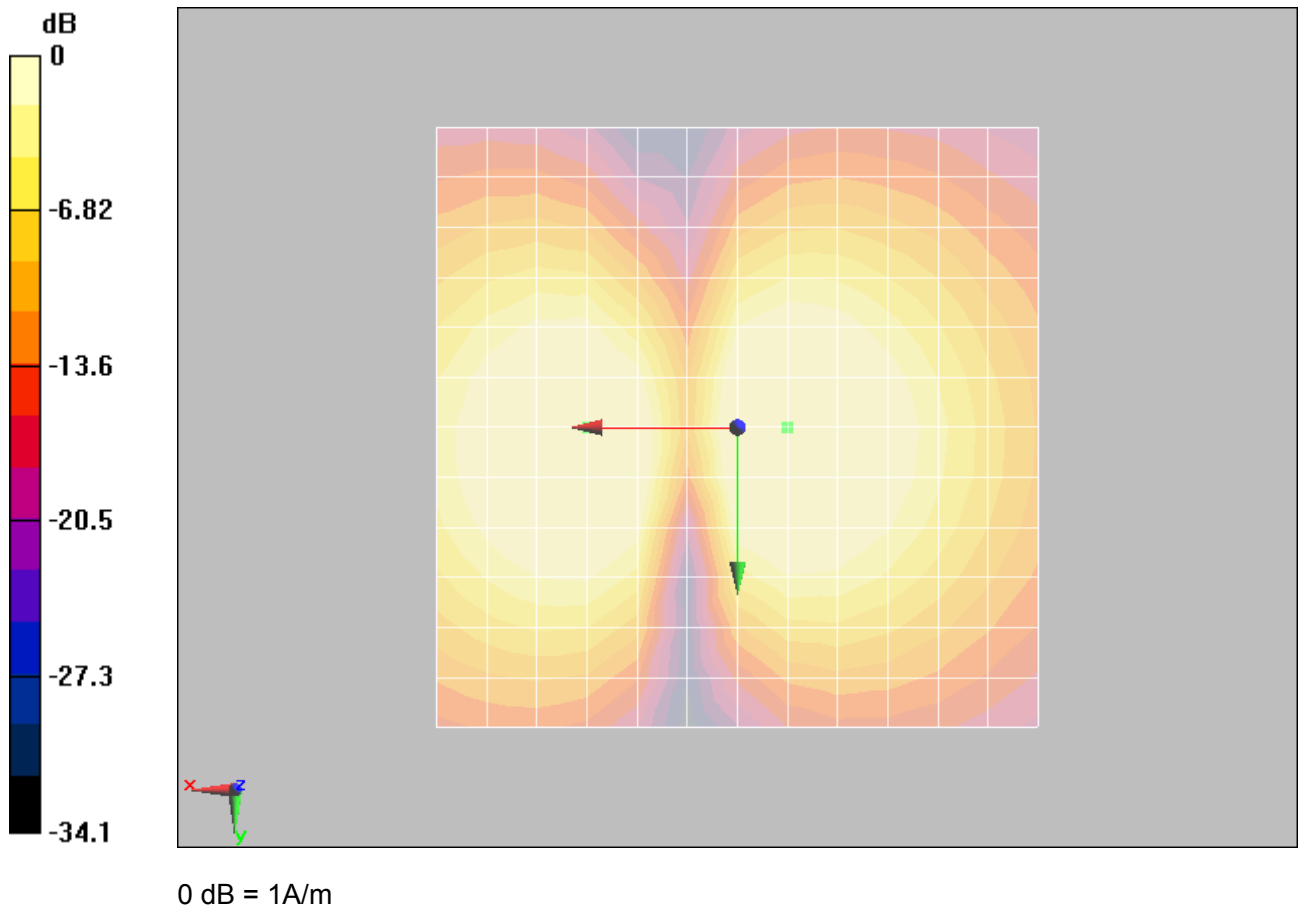


Figure 23 T-Coil WCDMA Band V X longitudinal

TA Technology (Shanghai) Co., Ltd.

Test Report

Report No. RXA1307-0093HAC02

Page 60 of 74

T-Coil WCDMA Band V Y transversal

Date/Time: 7/18/2013 10:22:59 PM

Communication System: WCDMA ; Frequency: 836.6 MHz;Duty Cycle: 1:1

Medium parameters used: $\sigma = 0$ mho/m, $\epsilon_r = 1$; $\rho = 1$ kg/m³

Ambient Temperature:22.3 °C

Phantom section: TCoil Section

DASY5 Configuration:

Sensor-Surface: 4mm (Mechanical Surface Detection)

Probe: AM1DV2 - 1064; ; Calibrated: 8/29/2012

Electronics: DAE4 Sn1317; Calibrated: 1/25/2013

Phantom: HAC Test Arch with AMCC; Type: SD HAC P01 BA;

Measurement SW: DASY5, V5.2 Build 162; SEMCAD X Version 14.0 Build 59

Megane USA WCDMA V HAC_TCoil_WD_Emission/General Scans/y (transversal) 4.2mm 50 x 50/ABM Signal(x,y,z) (13x13x1):

Measurement grid: dx=10mm, dy=10mm

Signal Type: Audio File (.wav) 48k_voice_1kHz_1s.wav

Output Gain: 28.8

Measure Window Start: 300ms

Measure Window Length: 1000ms

BWC applied: 0.162972 dB

Device Reference Point: 0, 0, -6.3 mm

Category	Telephone parameters WD signal quality [(signal+noise)-to-noise ratio in decibels]
Category T1	0 dB to 10 dB
Category T2	10 dB to 20 dB
Category T3	20 dB to 30 dB
Category T4	> 30 dB

Cursor:

ABM1 comp = 5.5 dB A/m

BWC Factor = 0.162972 dB

Location: 4.2, -4.2, 3.7 mm

Megane USA WCDMA V HAC_TCoil_WD_Emission/General Scans/y (transversal) 4.2mm 50 x 50/ABM SNR(x,y,z) (13x13x1):

Measurement grid: dx=10mm, dy=10mm

Signal Type: Audio File (.wav) 48k_voice_1kHz_1s.wav

Output Gain: 28.8

Measure Window Start: 300ms

Measure Window Length: 1000ms

BWC applied: 0.162972 dB

Device Reference Point: 0, 0, -6.3 mm

TA Technology (Shanghai) Co., Ltd. Test Report

Category	Telephone parameters	WD signal quality
	[(signal+noise)-to-noise ratio in decibels]	
Category T1	0 dB to 10 dB	
Category T2	10 dB to 20 dB	
Category T3	20 dB to 30 dB	
Category T4	> 30 dB	

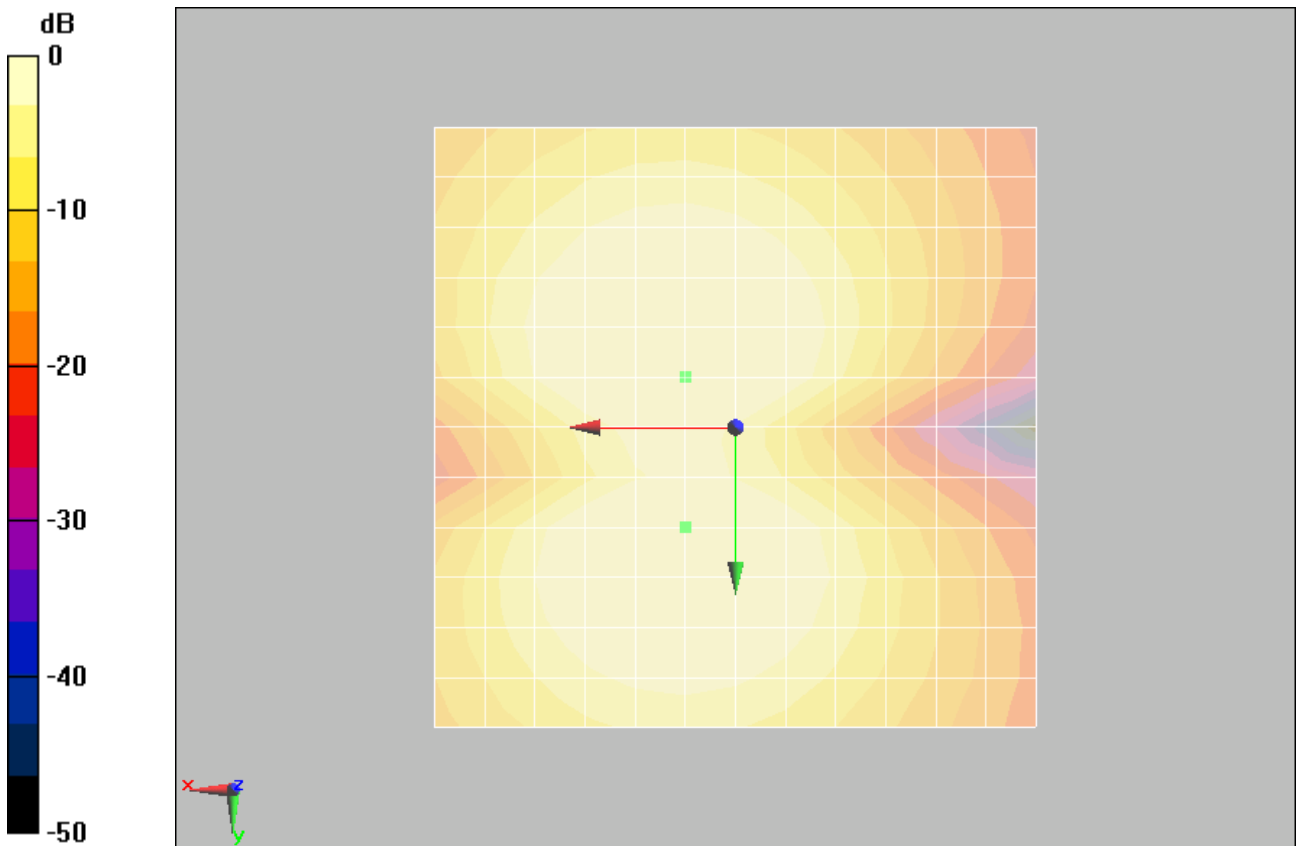
Cursor:

ABM1/ABM2 = 57.9 dB

ABM1 comp = 4.74 dB A/m

BWC Factor = 0.162972 dB

Location: 4.2, 8.3, 3.7 mm



0 dB = 1A/m

Figure 24 T-Coil WCDMA Band V Y transversal

TA Technology (Shanghai) Co., Ltd.
Test Report

Report No. RXA1307-0093HAC02

Page 62 of 74

T-Coil WCDMA Band V Z Axial

Date/Time: 7/18/2013 10:06:23 PM, Date/Time: 7/18/2013 10:56:22 PM

Communication System: WCDMA ; Frequency: 836.6 MHz;Duty Cycle: 1:1

Medium parameters used: $\sigma = 0$ mho/m, $\epsilon_r = 1$; $\rho = 1$ kg/m³

Ambient Temperature:22.3 °C

Phantom section: TCoil Section

DASY5 Configuration:

Sensor-Surface: 4mm (Mechanical Surface Detection)

Probe: AM1DV2 - 1064; ; Calibrated: 8/29/2012

Electronics: DAE4 Sn1317; Calibrated: 1/25/2013

Phantom: HAC Test Arch with AMCC; Type: SD HAC P01 BA;

Measurement SW: DASY5, V5.2 Build 162; SEMCAD X Version 14.0 Build 59

Megane USA WCDMA V HAC_TCoil_WD_Emission/General Scans/z (axial) 4.2mm 50 x 50/ABM Signal(x,y,z) (13x13x1):

Measurement grid: dx=10mm, dy=10mm

Signal Type: Audio File (.wav) 48k_voice_1kHz_1s.wav

Output Gain: 28.8

Measure Window Start: 300ms

Measure Window Length: 1000ms

BWC applied: 0.162972 dB

Device Reference Point: 0, 0, -6.3 mm

Category	Telephone parameters WD signal quality [(signal+noise)-to-noise ratio in decibels]
Category T1	0 dB to 10 dB
Category T2	10 dB to 20 dB
Category T3	20 dB to 30 dB
Category T4	> 30 dB

Cursor:

ABM1 comp = 13.4 dB A/m

BWC Factor = 0.162972 dB

Location: 4.2, 0, 3.7 mm

Megane USA WCDMA V HAC_TCoil_WD_Emission/General Scans/z (axial) 4.2mm 50 x 50/ABM SNR(x,y,z) (13x13x1):

Measurement grid: dx=10mm, dy=10mm

Signal Type: Audio File (.wav) 48k_voice_1kHz_1s.wav

Output Gain: 28.8

Measure Window Start: 300ms

Measure Window Length: 1000ms

BWC applied: 0.162972 dB

Device Reference Point: 0, 0, -6.3 mm

TA Technology (Shanghai) Co., Ltd.
Test Report

Report No. RXA1307-0093HAC02

Page 63 of 74

Category	Telephone parameters WD signal quality [(signal+noise)-to-noise ratio in decibels]
Category T1	0 dB to 10 dB
Category T2	10 dB to 20 dB
Category T3	20 dB to 30 dB
Category T4	> 30 dB

Cursor:

ABM1/ABM2 = 52.9 dB

ABM1 comp = 10.6 dB A/m

BWC Factor = 0.162972 dB

Location: 0, 0, 3.7 mm

Megane USA WCDMA V HAC_TCoil_WD_Emission/General Scans/z (axial) wideband at best S/N/ABM Freq Resp(x,y,z,f) (1x1x1):

Measurement grid: dx=10mm, dy=10mm

Signal Type: Audio File (.wav) 48k_voice_300-3000_2s.wav

Output Gain: 56.4

Measure Window Start: 300ms

Measure Window Length: 2000ms

BWC applied: 10.8 dB

Device Reference Point: 0, 0, -6.3 mm

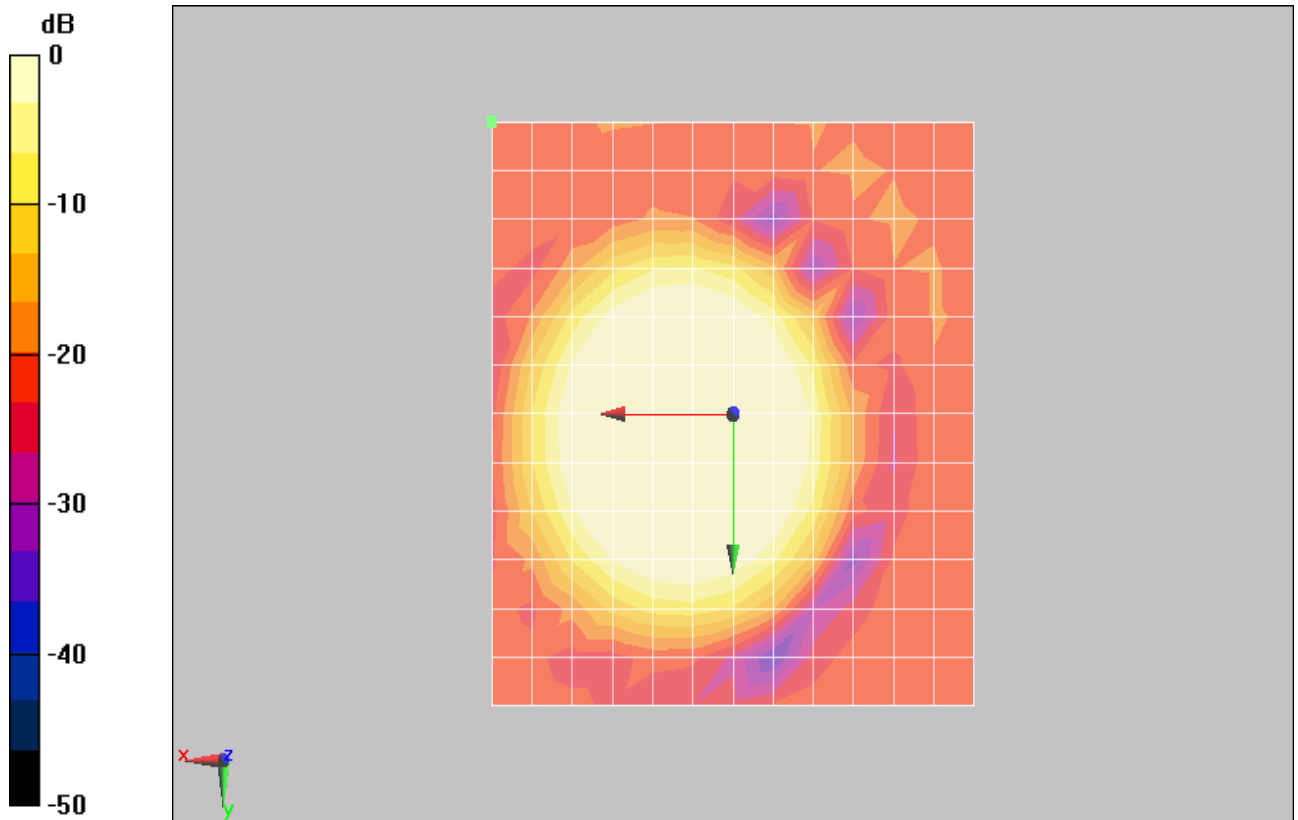
Category	Telephone parameters WD signal quality [(signal+noise)-to-noise ratio in decibels]
Category T1	0 dB to 10 dB
Category T2	10 dB to 20 dB
Category T3	20 dB to 30 dB
Category T4	> 30 dB

Cursor:

Diff = 0.848 dB

BWC Factor = 10.8 dB

Location: 0, 0, 3.7 mm



0 dB = 1A/m

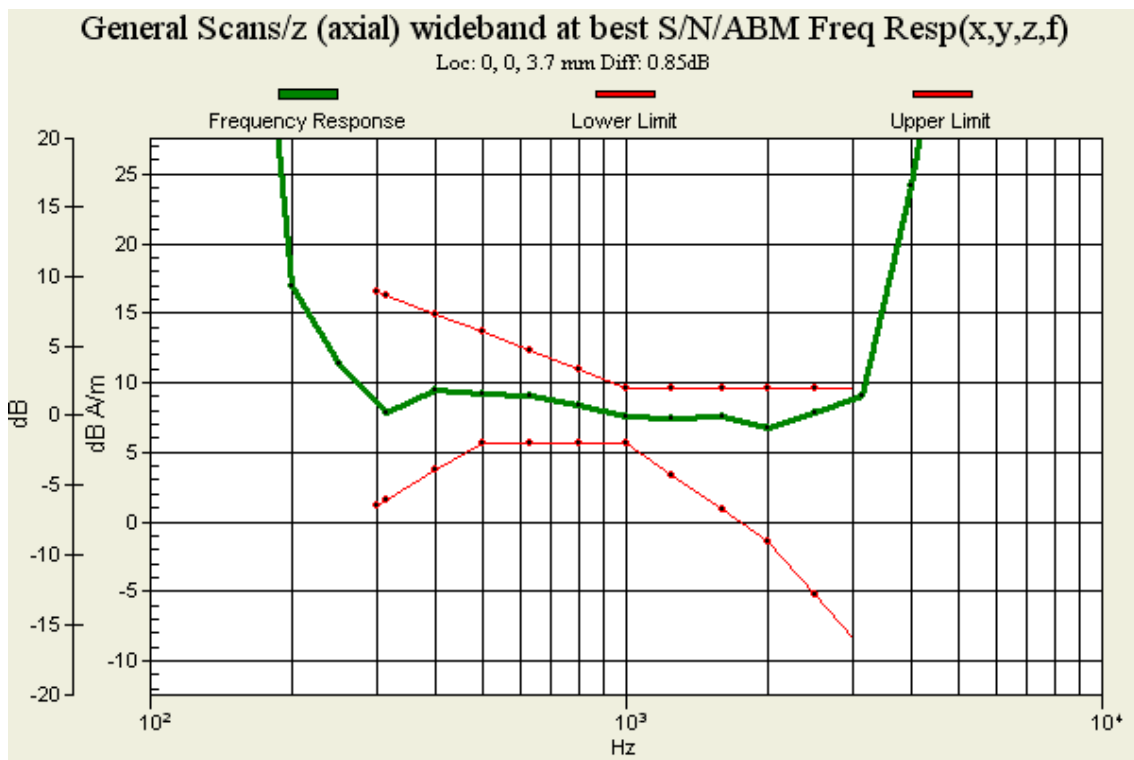




Figure 25 T-Coil WCDMA Band V Z Axial

TA Technology (Shanghai) Co., Ltd. Test Report

ANNEX C: Probe Calibration Certificate

**Calibration Laboratory of
Schmid & Partner
Engineering AG**
Zeughausstrasse 43, 8004 Zurich, Switzerland





S Schweizerischer Kalibrierdienst
S Service suisse d'étalonnage
C Servizio svizzero di taratura
S Swiss Calibration Service

Accredited by the Swiss Accreditation Service (SAS) Accreditation No.: **SCS 108**
 The Swiss Accreditation Service is one of the signatories to the EA
 Multilateral Agreement for the recognition of calibration certificates

Client **TMC Beijing (Auden)**

Certificate No: **AM1D-1064_Aug12**

CALIBRATION CERTIFICATE

Object	AM1DV2 - SN: 1064
Calibration procedure(s)	QA CAL-24.v3 Calibration procedure for AM1D magnetic field probes and TMFS in the audio range
Calibration date:	August 29, 2012



This calibration certificate documents the traceability to national standards, which realize the physical units of measurements (SI). The measurements and the uncertainties with confidence probability are given on the following pages and are part of the certificate.

All calibrations have been conducted in the closed laboratory facility: environment temperature (22 ± 3)°C and humidity < 70%.

Calibration Equipment used (M&TE critical for calibration)

Primary Standards	ID #	Cal Date (Certificate No.)	Scheduled Calibration
Keithley Multimeter Type 2001	SN: 0810278	28-Sep-11 (No:11450)	Sep-12
Reference Probe AM1DV2	SN: 1008	12-Jan-12 (No. AM1D-1008_Jan12)	Jan-13
DAE4	SN: 781	29-May-12 (No. DAE4-781_May12)	May-13

Secondary Standards	ID #	Check Date (in house)	Scheduled Check
AMCC	1050	12-Oct-11 (in house check Oct-11)	Oct-13

	Name	Function	Signature
Calibrated by:	Fin Bomholt	R&D Director	
Approved by:	Katja Pokovic	Laboratory Director	

Issued: August 31, 2012

This calibration certificate shall not be reproduced except in full without written approval of the laboratory.

Certificate No: AM1D-1064_Aug12

Page 1 of 3

References

- [1] ANSI C63.19-2007, ANSI C63.19-2011
American National Standard for Methods of Measurement of Compatibility between Wireless Communications Devices and Hearing Aids.
- [2] DASY5 manual, Chapter: Hearing Aid Compatibility (HAC) T-Coil Extension

Description of the AM1D probe

The AM1D Audio Magnetic Field Probe is a fully shielded magnetic field probe for the frequency range from 100 Hz to 20 kHz. The pickup coil is compliant with the dimensional requirements of [1]. The probe includes a symmetric low noise amplifier for the signal available at the shielded 3 pin connector at the side. Power is supplied via the same connector (phantom power supply) and monitored via the LED near the connector. The 7 pin connector at the end of the probe does not carry any signals, but determines the angle of the sensor when mounted on the DAE. The probe supports mechanical detection of the surface.

The single sensor in the probe is arranged in a tilt angle allowing measurement of 3 orthogonal field components when rotating the probe by 120° around its axis. It is aligned with the perpendicular component of the field, if the probe axis is tilted nominally 35.3° above the measurement plane, using the connector rotation and sensor angle stated below.

The probe is fully RF shielded when operated with the matching signal cable (shielded) and allows measurement of audio magnetic fields in the close vicinity of RF emitting wireless devices according to [1] without additional shielding.

Handling of the item

The probe is manufactured from stainless steel. In order to maintain the performance and calibration of the probe, it must not be opened. The probe is designed for operation in air and shall not be exposed to humidity or liquids. For proper operation of the surface detection and emergency stop functions in a DASY system, the probe must be operated with the special probe cup provided (larger diameter).

Methods Applied and Interpretation of Parameters

- *Coordinate System:* The AM1D probe is mounted in the DASY system for operation with a HAC Test Arch phantom with AMCC Helmholtz calibration coil according to [2], with the tip pointing to "southwest" orientation.
- *Functional Test:* The functional test preceding calibration includes test of Noise level
RF immunity (1kHz AM modulated signal). The shield of the probe cable must be well connected. Frequency response verification from 100 Hz to 10 kHz.
- *Connector Rotation:* The connector at the end of the probe does not carry any signals and is used for fixation to the DAE only. The probe is operated in the center of the AMCC Helmholtz coil using a 1 kHz magnetic field signal. Its angle is determined from the two minima at nominally +120° and -120° rotation, so the sensor in the tip of the probe is aligned to the vertical plane in z-direction, corresponding to the field maximum in the AMCC Helmholtz calibration coil.
- *Sensor Angle:* The sensor tilting in the vertical plane from the ideal vertical direction is determined from the two minima at nominally +120° and -120°. DASY system uses this angle to align the sensor for radial measurements to the x and y axis in the horizontal plane.
- *Sensitivity:* With the probe sensor aligned to the z-field in the AMCC, the output of the probe is compared to the magnetic field in the AMCC at 1 kHz. The field in the AMCC Helmholtz coil is given by the geometry and the current through the coil, which is monitored on the precision shunt resistor of the coil.

TA Technology (Shanghai) Co., Ltd.
Test Report

AM1D probe identification and configuration data

Item	AM1DV2 Audio Magnetic 1D Field Probe
Type No	SP AM1 001 AF
Serial No	1064

Overall length	296 mm
Tip diameter	6.0 mm (at the tip)
Sensor offset	3.0 mm (centre of sensor from tip)
Internal Amplifier	40 dB

Manufacturer / Origin	Schmid & Partner Engineering AG, Zurich, Switzerland
Manufacturing date	November 06, 2007
Last calibration date	December 06, 2007

Calibration data

Connector rotation angle	(in DASY system)	333.2 °	+/- 3.6 ° (k=2)
Sensor angle	(in DASY system)	0.54 °	+/- 0.5 ° (k=2)
Sensitivity at 1 kHz	(in DASY system)	0.0657 V / (A/m)	+/- 2.2 % (k=2)

The reported uncertainty of measurement is stated as the standard uncertainty of measurement multiplied by the coverage factor k=2, which for a normal distribution corresponds to a coverage probability of approximately 95%.

TA Technology (Shanghai) Co., Ltd. Test Report

ANNEX D: DAE4 Calibration Certificate

**Calibration Laboratory of
Schmid & Partner
Engineering AG**
Zeughausstrasse 43, 8004 Zurich, Switzerland



S Schweizerischer Kalibrierdienst
C Service suisse d'étalonnage
S Servizio svizzero di taratura
S Swiss Calibration Service

Accredited by the Swiss Accreditation Service (SAS)
The Swiss Accreditation Service is one of the signatories to the EA
Multilateral Agreement for the recognition of calibration certificates

Accreditation No.: **SCS 108**

Client **TA Shanghai (Auden)**

Certificate No: **DAE4-1317_Jan13**

CALIBRATION CERTIFICATE

Object **DAE4 - SD 000 D04 BJ - SN: 1317**

Calibration procedure(s) **QA CAL-06.v25
Calibration procedure for the data acquisition electronics (DAE)**

Calibration date: **January 25, 2013**

This calibration certificate documents the traceability to national standards, which realize the physical units of measurements (SI).
The measurements and the uncertainties with confidence probability are given on the following pages and are part of the certificate.

All calibrations have been conducted in the closed laboratory facility: environment temperature (22 ± 3)°C and humidity < 70%.

Calibration Equipment used (M&TE critical for calibration)

Primary Standards	ID #	Cal Date (Certificate No.)	Scheduled Calibration
Keithley Multimeter Type 2001	SN: 0810278	02-Oct-12 (No:12728)	Oct-13
Secondary Standards	ID #	Check Date (in house)	Scheduled Check
Auto DAE Calibration Unit	SE UWS 053 AA 1001	07-Jan-13 (in house check)	In house check: Jan-14
Calibrator Box V2.1	SE UMS 006 AA 1002	07-Jan-13 (in house check)	In house check: Jan-14

	Name	Function	Signature
Calibrated by:	R. Mayoraz	Technician	<i>R. Mayoraz</i>
Approved by:	Fin Bomholt	Deputy Technical Manager	<i>Fin Bomholt</i>

Issued: January 25, 2013

This calibration certificate shall not be reproduced except in full without written approval of the laboratory.

Calibration Laboratory of
Schmid & Partner
Engineering AG
Zeughausstrasse 43, 8004 Zurich, Switzerland



S Schweizerischer Kalibrierdienst
C Service suisse d'étalonnage
S Servizio svizzero di taratura
S Swiss Calibration Service

Accredited by the Swiss Accreditation Service (SAS)
The Swiss Accreditation Service is one of the signatories to the EA
Multilateral Agreement for the recognition of calibration certificates

Accreditation No.: SCS 108

Glossary

DAE data acquisition electronics
Connector angle information used in DASY system to align probe sensor X to the robot coordinate system.

Methods Applied and Interpretation of Parameters

- *DC Voltage Measurement*: Calibration Factor assessed for use in DASY system by comparison with a calibrated instrument traceable to national standards. The figure given corresponds to the full scale range of the voltmeter in the respective range.
- *Connector angle*: The angle of the connector is assessed measuring the angle mechanically by a tool inserted. Uncertainty is not required.
- The following parameters as documented in the Appendix contain technical information as a result from the performance test and require no uncertainty.
 - *DC Voltage Measurement Linearity*: Verification of the Linearity at +10% and -10% of the nominal calibration voltage. Influence of offset voltage is included in this measurement.
 - *Common mode sensitivity*: Influence of a positive or negative common mode voltage on the differential measurement.
 - *Channel separation*: Influence of a voltage on the neighbor channels not subject to an input voltage.
 - *AD Converter Values with inputs shorted*: Values on the internal AD converter corresponding to zero input voltage
 - *Input Offset Measurement*: Output voltage and statistical results over a large number of zero voltage measurements.
 - *Input Offset Current*: Typical value for information; Maximum channel input offset current, not considering the input resistance.
 - *Input resistance*: Typical value for information: DAE input resistance at the connector, during internal auto-zeroing and during measurement.
 - *Low Battery Alarm Voltage*: Typical value for information. Below this voltage, a battery alarm signal is generated.
 - *Power consumption*: Typical value for information. Supply currents in various operating modes.

TA Technology (Shanghai) Co., Ltd.
Test Report

DC Voltage Measurement

A/D - Converter Resolution nominal

High Range: 1LSB = 6.1 μ V, full range = -100...+300 mV

Low Range: 1LSB = 61nV, full range = -1.....+3mV

DASY measurement parameters: Auto Zero Time: 3 sec; Measuring time: 3 sec

Calibration Factors	X	Y	Z
High Range	404.011 \pm 0.02% (k=2)	404.006 \pm 0.02% (k=2)	403.901 \pm 0.02% (k=2)
Low Range	3.98819 \pm 1.55% (k=2)	3.99805 \pm 1.55% (k=2)	3.98192 \pm 1.55% (k=2)

Connector Angle

Connector Angle to be used in DASY system	117 $^{\circ}$ \pm 1 $^{\circ}$
---	-----------------------------------

TA Technology (Shanghai) Co., Ltd.

Test Report

Appendix

1. DC Voltage Linearity

High Range		Reading (μV)	Difference (μV)	Error (%)
Channel X	+ Input	199994.16	-0.78	-0.00
Channel X	+ Input	20000.75	0.37	0.00
Channel X	- Input	-19997.98	2.89	-0.01
Channel Y	+ Input	199995.20	0.02	0.00
Channel Y	+ Input	19999.08	-1.15	-0.01
Channel Y	- Input	-20002.66	-1.68	0.01
Channel Z	+ Input	199994.67	-0.43	-0.00
Channel Z	+ Input	19997.92	-2.31	-0.01
Channel Z	- Input	-20000.66	0.26	-0.00

Low Range		Reading (μV)	Difference (μV)	Error (%)
Channel X	+ Input	2001.23	0.59	0.03
Channel X	+ Input	201.53	0.55	0.28
Channel X	- Input	-198.20	0.62	-0.31
Channel Y	+ Input	2000.33	-0.29	-0.01
Channel Y	+ Input	200.43	-0.68	-0.34
Channel Y	- Input	-199.64	-0.69	0.35
Channel Z	+ Input	2000.78	0.22	0.01
Channel Z	+ Input	200.32	-0.69	-0.34
Channel Z	- Input	-199.27	-0.35	0.18

2. Common mode sensitivity

DASY measurement parameters: Auto Zero Time: 3 sec; Measuring time: 3 sec

	Common mode Input Voltage (mV)	High Range Average Reading (μV)	Low Range Average Reading (μV)
Channel X	200	-23.69	-25.75
	- 200	28.59	26.45
Channel Y	200	-1.44	-1.70
	- 200	-0.06	-0.16
Channel Z	200	-10.76	-11.18
	- 200	9.82	9.91

3. Channel separation

DASY measurement parameters: Auto Zero Time: 3 sec; Measuring time: 3 sec

	Input Voltage (mV)	Channel X (μV)	Channel Y (μV)	Channel Z (μV)
Channel X	200	-	1.52	-4.72
Channel Y	200	8.54	-	4.31
Channel Z	200	10.79	5.34	-

TA Technology (Shanghai) Co., Ltd.

Test Report

4. AD-Converter Values with inputs shorted

DASY measurement parameters: Auto Zero Time: 3 sec; Measuring time: 3 sec

	High Range (LSB)	Low Range (LSB)
Channel X	16104	15986
Channel Y	16111	15993
Channel Z	16217	16069

5. Input Offset Measurement

DASY measurement parameters: Auto Zero Time: 3 sec; Measuring time: 3 sec

Input 10M Ω

	Average (μ V)	min. Offset (μ V)	max. Offset (μ V)	Std. Deviation (μ V)
Channel X	1.28	0.53	2.45	0.33
Channel Y	-1.29	-2.89	0.51	0.58
Channel Z	-0.39	-1.47	1.06	0.37

6. Input Offset Current

Nominal Input circuitry offset current on all channels: <25fA

7. Input Resistance (Typical values for information)

	Zeroing (kOhm)	Measuring (MOhm)
Channel X	200	200
Channel Y	200	200
Channel Z	200	200

8. Low Battery Alarm Voltage (Typical values for information)

Typical values	Alarm Level (VDC)
Supply (+ Vcc)	+7.9
Supply (- Vcc)	-7.6

9. Power Consumption (Typical values for information)

Typical values	Switched off (mA)	Stand by (mA)	Transmitting (mA)
Supply (+ Vcc)	+0.01	+6	+14
Supply (- Vcc)	-0.01	-8	-9

ANNEX E: The EUT Appearances and Test Configuration



Picture 2: Constituents of EUT

TA Technology (Shanghai) Co., Ltd.
Test Report

Report No. RXA1307-0093HAC02

Page 74 of 74



Picture 3: Test Setup