

Quick Start Guide

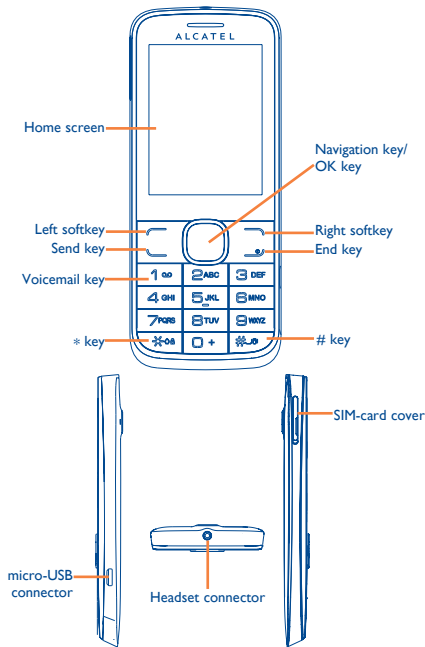
For more information about how to use the cellphone, please go to [www.alcatelonetouch.com](http://www.alcatelonetouch.com) to download complete user manual (English version only). Also on our website you can find helpful FAQs (English version only).

**PROTECT YOUR HEARING**  
To prevent possible hearing damage, do not listen at high volume levels for long periods. Exercise caution when holding your device near your ear while the loudspeaker is in use.

ALCATEL **onetouch**

Your mobile .....

1.1 Keys and connectors



- Press to go left/right/up/down
- Press to confirm an option
- Press and hold to enter Music player
- Left softkey
- Unlock keypad
- Access main menu
- Send key
- Answer/Send a call
- Press: Enter Call log
- Press and hold: Enter Fake call
- Right softkey
- Access contacts
- Press: End a call
- Return to the Home screen
- Press and hold: Power on/off
- Press and hold: Access your voicemail
- From Idle screen
  - Press: 0
  - Press and hold: "+/P/W"
- In Edit mode
  - Press: Access symbols table
  - Press and hold: 0
- From Idle screen
  - Press: \*
  - Press and hold: Lock keypad
- In Edit mode:
  - Press: Change input methods
  - Press and hold: Access language list
- From Idle screen
  - Press: #
  - Press and hold: Vibrate alert
- In Edit mode
  - Press: (space)

1.2 Status bar icons (1)

- Battery charge level.**
- Vibrate alert:** your phone vibrates, but does not ring or beep with the exception of the alarm.
- Bluetooth status (Activated).**
- Bluetooth status (Connected to an audio device).**
- Headset connected.**
- Keypad locked.**
- Call forwarding activated:** your calls are forwarded.
- Alarm or appointments programmed.**
- Level of network reception.**
- Voicemail message arrived.**
- Missed calls.**
- Radio is on.**
- WAP messages (2).**
- Roaming.**
- SD card scanning completed.**

(1) The icons and illustrations in this guide are provided for informational purposes only.  
(2) Depending on your network operator.

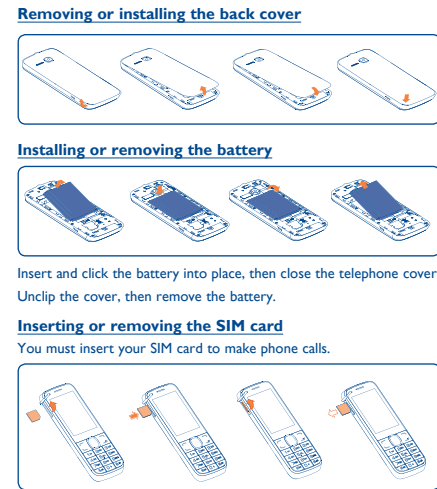
1.3 Home screen

- 1.3.1 Widget bar**  
Widgets are convenient shortcuts for quick access from the Home screen. You can customize widget bar by "Settings/Phone settings/Widget bar".
- 1.3.2 Change wallpaper**  
You can select a folder to choose one image as favorite wallpaper by selecting "Options/Set as/Wallpaper".
- Line switching (1):** indicates the selected line.
- GPRS connection status (Activated).**
- GPRS connecting.**
- EDGE connecting.**
- EDGE attached.**
- Music activated.**
- MMS receipt in progress.**
- Sending an MMS.**
- SMS unread.**
- MMS unread.**
- (Flickering) Message list is full:** your phone cannot accept any new messages. You must access the message list and delete at least one message on your SIM card.
- Flight mode.**

(1) Depending on your network operator.

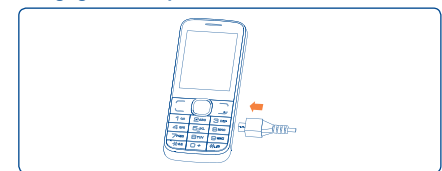
2 Getting started .....

2.1 Set-up



Place the SIM card with the chip facing upwards and slide it into its housing. Make sure that it is correctly inserted. To remove the card, press and slide it out.  
The phone will power off automatically after inserting micro SIM, you should power on manually.

Charging the battery



Connect the battery charger to your phone and outlet respectively.  
To reduce power consumption and energy waste, when battery is fully charged, disconnect your charger from the plug; switch off Bluetooth or background-running applications when not in use; reduce the backlight time, etc.

2.2 Power on your phone

Hold down the key until the telephone powers on.

2.3 Power off your phone

Hold down the key from the Home screen.

3 Making a call .....

Dial the desired number then press the send key to place the call. The number you entered can be saved to **Contacts** by selecting "Save". If you make a mistake, you may press Right softkey to delete the incorrect digits.

To hang up the call, press the key.

4 Menu arrange .....

It is designed to vary according to your preference.

Change the order

Access the main menu, focus on the main menu item you want to move, select "Options>Select to move", and tick "I" will be shown on the item you selected, then release it to your favorite destination.

Show/Hide

Access the main menu, select "Options>Add or remove menu", and select the left check box of the selected menu once to show/hide, and then save the operation.

5 Messages.....

5.1 Access

- You may access this menu using the following options:
  - Access from the main menu by selecting "Messages".
  - Select from widget bar, and then enter the sub-menu you require.

5.2 Conversational On (Off) mode

In conversational on mode, you can view chat history in chronological order. In conversational off mode, you may have access to the following folders: **Inbox, Outbox, Sent, Drafts, Voicemail, Broadcast SMS, Empty folder, Templates, Settings.** Conversational view mode is set as default. You may switch to conventional mode by selecting "Options/Settings/Switch view mode".

5.3 Write message

You can select "Messages/Write new SMS/MMS" from the main menu or access from widget to write text/multimedia message. One or more recipients can be added from contact list. Press "Contacts" through key to multi-select recipients from Contacts. An SMS will be converted to MMS automatically when images, videos, audio, slides or attachments are inserted; or the message contains more than 8 pages of text.

An SMS message of more than a certain number of characters (the number of characters depends on your language) will be charged as several SMS. An MMS message containing photos and/or sounds may also be billed as more than one message. Specific letters (accent) will increase the size of the SMS, this may cause multiple SMS to be sent to your recipient.

6 Contacts .....

6.1 Consulting your contacts

You can access to this function by selecting "Contacts" from the main menu.

6.2 Adding a contact

You can add a new contact to phone or SIM card by selecting "Add contact".

7 Call log .....

7.1 Access

- You can access the function using the following options:
  - Select from main menu
  - Press the send key from Home screen
  - Select from widget bar, and then enter the sub-menu you require.

7.2 Available options

When you press "Options", you can have access to **View, Send message, Save to Contacts, Edit before call, Add to blacklist, Add to whitelist, Delete** etc.

8 Apps (1) .....

Apps store is an online software store, where you can download and install applications and games to your phone.

9 Apps mgr .....

You may manage your downloaded applications and games.

10 Camera .....

- Your mobile phone is fitted with a camera for taking photos and shooting videos that you can use in different ways:
  - store them as your creations in SD card or phone.
  - send them in a multimedia message (MMS) to a mobile phone.
  - send them directly by MMS, Bluetooth.
  - customize your Home screen.
  - select them as incoming call image to a contact in your Contacts.
  - transfer them by data cable or microSD card to your computer.

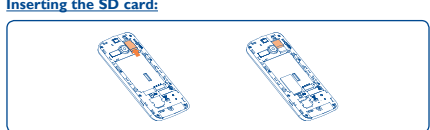
11 Media applications .....

- 11.1 Music.....**  
You can access this feature from the main menu by selecting "Music". You will have full flexibility of managing music both on your mobile and SD card.
- 11.2 Images.....**  
A library links to the images (stored in "My images") in phone or SD card to multi-mark, set as wallpaper, power on/off display and incoming call image or sent by MMS, Bluetooth.
- 11.3 Videos.....**  
Contains all video clips (stored in "My videos") in phone or SD card and enables you to play, send, set as power on/off display, delete, rename, sort, etc.
- 11.4 FM radio.....**

(1) The quality of the radio depends on the coverage of the radio station in that particular area.  
(2) Depending on your network operator and market.

12 My files .....

You will have an access to all audio and visual files stored in phone or SD card in **My files**. You can access a number of items with this option: **My audios, My images, My videos, Received**, etc.



Firstly, release the microSD card holder. Then insert the microSD card with the golden contact downward. Finally, turn down the microSD holder.

13 Applications.....

- 13.1 Facebook (1) .....**  
Facebook is a social utility that connects people with friends and others who work, study and live around them. It provides a number of features with which users interact, such as Wall, Pokes, etc.  
To open an account online, please go to: <http://m.facebook.com/>.
- 13.2 Twitter (1).....**  
Twitter is a social networking and microblogging service that has gained notability and popularity worldwide. This feature enables phone users to exchange news updates and ideas with a community in the form of messages or posts. Posts are displayed on the author's profile page and delivered to the author's subscribers or followers.  
To open an account online, please go to: <http://m.twitter.com>.

14 Games .....

15 Services.....

Contact your network operator to check service availability.

(1) Download the application first.

16 Tools .....

- 16.1 Alarm.....**  
Your mobile phone has a built-in alarm clock with a snooze feature.
- 16.2 Calculator.....**  
Access this feature by selecting "Calculator" from the main menu. Enter a number, select the type of operation to be performed using the navigation keys, and enter the second number, then select "=" to display the result.
- 16.3 Calendar.....**  
Once you enter this menu from main menu, there is a monthly-view calendar for you to keep track of important meetings, appointments, etc. Days with events entered will be marked in color.
- 16.4 Notes.....**  
You can create a note in text format by accessing "Notes" from the main menu.
- 16.5 Bluetooth™.....**  
Access this feature by pressing "Menu" through Left softkey from the Home screen to enter the main menu, then selecting "Bluetooth".
- 16.6 Converter.....**  
You can use the Weight and Length conversion by selecting the unit you wish to convert, then press to input the digits. Finally confirm with "OK".

16.7 Voice alarm .....

With this menu, you may create the voice file and set it as the alarm.

16.8 Fake call .....

This program enables you to call yourself by simulating a caller number/name, ringtone at a scheduled time. It helps you to politely escape from social situations at any time you wish. This call can be rejected by key . Activate a fake call by "Fake call mode/Enable".

16.9 Call filter .....

Enable blacklist, all callers in the list will be automatically blocked. Enable whitelist, only callers in the list can be connected.

16.10 WAP .....

Access Wap options: **Homepage, Bookmarks, Go to URL, Last wap address, Recent pages, Offline pages, Service inbox, Settings.**

17 Profiles .....

With this menu, you may personalize ringtones for different events and environments.

**PROTECT YOUR HEARING**  
To prevent possible hearing damage, do not listen at high volume levels for long periods. Exercise caution when holding your device near your ear while the loudspeaker is in use.

ALCATEL is a trademark of Alcatel-Lucent and is used under license by TCT Mobile Limited.  
All rights reserved © Copyright 2013 TCT Mobile Limited.  
TCT Mobile Limited reserves the right to alter material or technical specification without prior notice.

(1) Depending on your network operator.

