

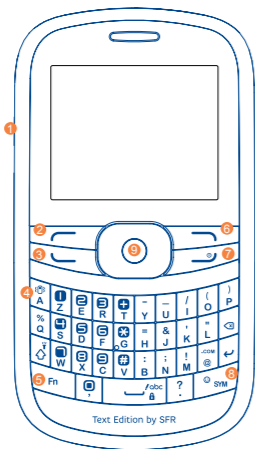
# Quick Start Guide

For more information about how to use the phone, please go to [www.alcatelnetouch.com](http://www.alcatelnetouch.com) to download complete user manual (English version only). Also on our website you can find helpful FAQs (English version only).

Prolonged exposure to music at full volume on the music player may damage the listener's hearing. Set your phone volume safely. Use only headphones recommended by TCT Mobile Limited and its affiliates.



## Your mobile.....



- 1 Camera (press)
- 2 Left softkey
- 3 Answer/Send call
- 4 Call log (Idle screen)
- 5 Activate fake call (press and hold)
- 6 Vibrate alert (press and hold)
- 7 Fn key
- 8 Right softkey
- 9 Switch on/ Switch off
- 10 End call
- 11 Navigation key: Menu/Confirm an option

### 1.1 Keys

- Navigation key  
Confirm an option (press the middle of the key)  
Activate music player (press and hold the middle of key)  
Scroll widget bar (press the right or left of the key)
- Answer  
Send a call  
In idle screen:  
Access call log (Redial) (press)  
Activate fake call (press and hold)
- Switch on/Switch off the mobile phone (press and hold)  
End call  
Return to idle screen
- Left softkey
- Right softkey
- Access your voicemail (press and hold)
- In idle screen:  
Press and hold/Press: Lock/Unlock the keypad  
In edit mode:  
Press: input space  
Press and hold: switch language

### Fn

- In idle screen:  
Press to access shortcuts  
Fn + P: Access to Profiles  
Fn + Q: Access to Clock  
Fn + S: Access to Notes
- In edit mode:  
Press once: Input a top-half character  
Press twice: Lock the keyboard in top-half key input mode, then press again to unlock top-half character input mode
- In edit mode:  
Press: popup symbol page to select special character using the navigation key
- Delete one by one (press)  
Delete one by one quickly (press and hold)
- Move cursor to the next line
- In idle screen:  
Press and hold: Switch on/off the flashlight  
In edit screen:  
Press: Switch the uppercase and lowercase

### 1.2 Main screen icons <sup>(1)</sup>

- Battery charge level
- Vibrate alert: your phone vibrates, but does not ring or beep
- Headset connected
- Keypad locked
- Call forwarding activated: your calls are forwarded.
- Alarm or appointments programmed
- Level of network reception
- Voicemail message arrived
- Missed calls
- Radio is on
- WAP alerts <sup>(2)</sup>
- Roaming

<sup>(1)</sup> The icons and illustrations in this guide are provided for information purposes only.  
<sup>(2)</sup> Depending on your network operator.

- SIM card missing
- microSD card available
- GPRS connection status (Activated)
- GPRS connecting
- Sending an MMS
- MMS receiving
- Silence mode: your phone does not ring, beep or vibrate
- SMS unread
- MMS unread
- Email unread
- Flight mode

## 2 Getting started.....

### 2.1 Set-up

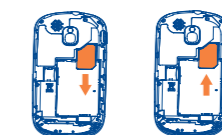
#### Removing and installing the back cover



#### Removing and installing the battery

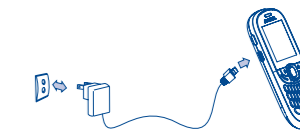


#### Removing and inserting the SIM card



Place the SIM card with the chip facing downwards and slide it into its housing. Make sure that it is correctly inserted. To remove the card, press it and slide it out.

### Charging the battery <sup>(1)</sup>



Connect the battery charger to your phone and outlet respectively.

- The charging may take about 20 minutes to start if the battery is flat.
- Be careful not to force the plug into the socket.
- Make sure the battery is correctly inserted before connecting the charger.
- The outlet must be near to the phone and easily accessible (avoid electric extension cables).
- When using your mobile phone for the first time, charge the battery fully (approximately 3 hours). You are advised to fully charge the battery ( ).
- To reduce power consumption and energy waste, when battery is fully charged, disconnect your charger from the plug; reduce the backlight time, etc.

The charge is complete when the animation stops.

<sup>(1)</sup> Depending on your country.

### 2.2 Power on your phone

Hold down the key until the phone powers on.

### 2.3 Power off your phone

Hold down the key from the main screen.

### 2.4 Home screen



## 3 Calls .....

### 3.1 Making a call

Dial the desired number then press the key to place the call. If you make a mistake, you can delete the incorrect digits by pressing the right softkey.

To hang up the call, press the key.

#### Making an emergency call

If your phone is covered by the network, dial emergency number and press the key to make an emergency call. This works even without a SIM card and without typing the PIN code or unlocking the keypad.

### 3.2 Calling your voicemail <sup>(1)</sup>

To access your voicemail, hold down the key.

### 3.3 Receiving a call

When you receive an incoming call, press the key to talk and then hang up using the key.

### 3.4 Available functions during the call

During a call, you can use your directory, text messages, etc. without hanging up or dropping the call.

<sup>(1)</sup> Contact your network operator to check service availability.

## 4 Contacts .....

### 4.1 Consulting your contacts

To access the **contacts** from the main screen, press the key and select the icon from the menu.

### 4.2 Adding a contact

Select the directory in which you wish to add contact, press the **"Options"** softkey, select **"Add contact"**.

## 5 Messaging .....

### 5.1 Create message

From the main menu select **"Messaging"** to create text/multimedia message. You can type a message and you can also modify a predefined message in **Templates** or customize your message by adding pictures, photos, sounds, titles, etc (only available while editing a MMS). While writing a message, select **"Options"** to access all the messaging options. You can save your messages that you send often to **Drafts** or **Templates** (MMS only).

Specific letters (accent) will increase the size of the SMS, this may cause multiple SMS to be sent to your recipient.

## 6 Email.....

Your phone has an email client with the settings predefined for a few popular email services like – GoogleMail, Windows live, Yahoo,AOL, etc. <sup>(1)</sup> Besides this, you can set up other POP3 or IMAP4 email accounts that you may be using.

## 7 WAP .....

Access Wap options: **Homepage, Bookmarks, Recent pages, Offline pages, Go to URL, Settings.**

## 8 Camera .....

Your mobile phone is fitted with a camera for taking photos that you can use in different ways:

- store them in your **"File manager/My creations"**.
- send them in a multimedia message (MMS) to a mobile phone or an email address.
- customize your main screen.
- select them as incoming call image to a contact in your directory.

<sup>(1)</sup> Depending on your network operator.

## 9 Media .....

### 9.1 Music player

Access this feature from the main menu by selecting **"Media/Music player"**. You will have full flexibility of managing music both on your mobile and memory card.

### 9.2 FM Radio

Your phone is equipped with a radio <sup>(1)</sup> with RDS <sup>(2)</sup> functionality. You can use the application as a traditional radio with saved channels or with parallel visual information related to the radio program on the display if you tune to stations that offer Visual Radio service. You can listen to it while running other applications.

## 10 Settings .....

From the main menu, select the menu icon and select the function of your choice in order to customize your mobile phone: **Phone settings, Call settings, Security, Networks, Connectivity.**

<sup>(1)</sup> The quality of the radio depends on the coverage of the radio station in that particular area.  
<sup>(2)</sup> Depending on your network operator and market.

## 11 Call log .....

You can access your call memory by pressing from the idle screen, and you will see Outgoing call(s), Missed call(s) and Answered call(s).

## 12 Tools.....

### 12.1 Alarm

Your mobile phone has a built-in alarm clock with a snooze feature.

### 12.2 Calendar

Once you enter this menu from the main menu, there is a monthly-view calendar for you to keep track of important meetings, appointments, etc. Days with events entered will be marked in color.

### 12.3 Voice reminder

After accessing Voice reminder, you may select Create voice reminder to record a sound file. Then you may set the date, time, mode, etc. If you select Directly play mode, the recorded sound file will play automatically as the voice reminder at the very time and date you have set.

### 12.4 Notes

You can create a note in text or voice format by accessing **"Tools/Notes"** from the main menu.

### 12.5 Calculator

Enter a number, select the type of operation to be performed, and enter the second number, then press **"="** to display the result.

### 12.6 Converter

Unit convertor and Currency convertor.

### 12.7 World clock

The World clock shows current local time and the time zone in different cities.

### 12.8 Fake call

This program enables you to call yourself by simulating a caller name, ringtone, contact photo at a scheduled time. It helps you to politely escape from social situations at any time you wish. This call can be rejected by key.

**Settings**

- Predefined settings of Caller name/number, Call time, Ringtone, Image (Contact photo).

**Activate**

- Activate a fake call by **"Tools/Fake call/Activate"** or by pressing and holding the key on the main screen. The call will then be made at the predetermined time.

### 12.9 Stopwatch

The stopwatch is a simple application for measuring time with the possibility to register several results and suspend/resume measurement.

### 12.10 Flashlight

To light in darkness, you may activate **"Flashlight"** by below operations:

In idle screen, press and hold key to switch on/off the Flashlight.

## 13 Applications.....

### 13.1 Games

Your phones includes some games, Select **"Game settings"**, it allows you to manage settings, in which you may set background audio and vibrate alert.

### 13.2 Weather

Your phone is equipped with a weather function for consulting up to 3-day forecasts of favorite cities.

## 14 Profiles .....



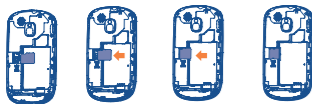
With this menu, you may personalize ringtones for different events and environments.

## 15 File manager ...



You will have access to all audio and visual files stored in phone or memory card in File manager. You can access a number of items with this option: **My audios, My images, My creations, Other files, Memory card** and **Memory status**.

### Inserting the memory card:



- To install the memory card, insert the microSD card with golden contact downwards into the slot.
- To remove the memory card, gently push the memory card until unlocked and then take out your microSD card.

Do not support hot plugging for microSD card.

17

## General information .....

An electronic version of this user guide is available in English and other languages according to availability on our server: [www.alcatelonetouch.com](http://www.alcatelonetouch.com)

Your mobile phone is a transceiver that operates on GSM networks with 850/900/1800/1900 MHz bands.

### Protection against theft <sup>(1)</sup>

Your mobile phone is identified by an IMEI (mobile phone serial number) shown on the packaging label and in the product's memory. We recommend that you note the number the first time you use your mobile phone by entering **\*#06#** and keep it in a safe place. It may be requested by the police or your operator if your mobile phone is stolen.

### Disclaimer

There may be certain differences between the user manual description and the mobile phone's operation, depending on the software release of your mobile phone or specific operator services.

TCT Mobile shall not be held legally responsible for such differences, if any, nor for their potential consequences, which responsibility shall be borne by the operator exclusively.

<sup>(1)</sup> Contact your network operator for service availability.

25

## 16 Latin input mode.

To write messages, there are two writing methods:

- Normal: this mode allows you to type a text by choosing a letter or a sequence of characters associated with a key.

- Predictive with the Zi mode: This mode speeds up the writing of your text.

**Fn key Fn :** Press once: Input a top-half character  
Press twice: Lock the keyboard in top-half key input mode, then press again to unlock top-half character input mode

**Sym key SMI :** Press: access the Symbols table

**Space key :** Press: input space  
Press and hold: switch language  
**Fn+Space:** switch input mode

**Shift key :** In eZiabc (Smartabc) input mode:  
Press once: only switch one character from minuscule to uppercase  
Press twice: lock uppercase input mode  
Press once: unlock the uppercase

**In eZiabc (Smartabc) input mode:**  
Press once: to eZi Abc  
Press twice: to eZi Abc

**Del key :** Press: delete one by one  
Press and hold: delete one by one quickly

18

## ALCATEL ONE TOUCH Limited Warranty .....

TCT Mobile North America LTD warrants to the original retail purchaser of this wireless device, that should this product or part thereof during normal consumer usage and condition, be proven to be defective in material or workmanship that results in product failure within the first twelve (12) months from the date of purchase as shown on your original sales receipt. Such defect(s) will be repaired or replaced (with new or rebuilt parts) at the company's option without charge for parts or labor directly related to the defect(s).

Batteries, power adapters, and other accessories sold as in box items are also warranted against defects and workmanship that results in product failure within the first six (6) months period from the date of purchase as shown on your original sales receipt. Such defect(s) will be repaired or replaced (with new or rebuilt parts) and the company's option without charge for parts or labor directly related to the defect(s).

The limited warranty for your wireless device will be voided if any of the following conditions occur:

- Non-compliance with the instructions for use or installation, or with technical and safety standards applicable in the geographical area where your mobile phone is used;
- Connection to any equipment not supplied or not recommended by TCT Mobile;
- Modification or repair performed by individuals not authorized by TCT Mobile or its affiliates;
- Acts of god such as Inclement weather, lightning, power surges, fire, humidity, infiltration of liquids or foods, chemical products, download of files, crash, high voltage, corrosion, oxidation;
- Removal or altering of the wireless devices event labels or serial numbers (IMEI);
- Damage from exposure to water or other liquids, moisture, humidity, excessive temperatures or extreme environmental conditions, sand, excess dust and any condition outside the operating guidelines;
- Defects in appearance, cosmetic, decorative or structural items such as framing and non-operative parts.

26

## Safety and use.....

We recommend that you read this chapter carefully before using your mobile phone. The manufacturer disclaims any liability for damage, which may result as a consequence of improper use or use contrary to the instructions contained herein.

**•TRAFFIC SAFETY:**  
Given that studies show that using a mobile phone while driving a vehicle constitutes a real risk, even when the hands-free kit is used (car kit, headset...), drivers are requested to refrain from using their mobile phone when the vehicle is not parked. Check the laws and regulations on the use of wireless mobile phones and their accessories in the areas where you drive. Always obey them. The use of these devices may be prohibited or restricted in certain areas.

When driving, do not use your mobile phone and headphone to listen to music or to the radio. Using a headphone can be dangerous and forbidden in some areas.

When switched on, your mobile phone emits electromagnetic waves that can interfere with the vehicle's electronic systems such as ABS anti-lock brakes or airbags. To ensure that there is no problem:

- do not place your mobile phone on top of the dashboard or within an airbag deployment area,
- check with your car dealer or the car manufacturer to make sure that the car's electronic devices are shielded from mobile phone RF energy.

**• CONDITIONS OF USE:**  
You are advised to switch off the mobile phone from time to time to optimize its performance.

Remember to abide by local authority rules of mobile phone use on aircrafts.  
Operational Warnings: Obey all posted signs when using mobile devices in public areas.

Follow Instructions to Avoid Interference Problems: Turn off your mobile device in any location where posted notices instruct you to do so. In an aircraft, turn off your mobile device whenever instructed to do so by airline staff. If your mobile device offers an airplane mode or similar feature, consult airline staff about using it in flight.

Switch the mobile phone off when you are in health care facilities, except in designated areas. As with many other types of equipment now in regular use, mobile phones can interfere with other electrical or electronic devices, or equipment using radio frequency.

Switch the mobile phone off when you are near gas or flammable liquids. Strictly obey all signs and instructions posted in a fuel depot, gas station, or chemical plant, or in any potentially explosive atmosphere.

When the mobile phone is switched on, it should be kept at least 15 cm from any medical device such as a pacemaker, a hearing aid or insulin pump. In particular when using the mobile phone you should hold it

19

There are no express warranties, whether written, oral or implied, other than this printed limited warranty or the mandatory warranty provided by your jurisdiction. In no event shall TCT Mobile or any of its affiliates be liable for incidental or consequential damages of any nature whatsoever, including but not limited to commercial loss, to the full extent those damages can be disclaimed by law. Some states do not allow the exclusion or limitation of incidental or consequential damages, or limitation of the duration of implied warranties, so the preceding limitations or exclusions may not apply to you.

How to obtain Support: Contact the customer care center by calling (877-702-3444) or going to [www.alcatelonetouch.com](http://www.alcatelonetouch.com). We have placed many self-help tools that may help you to isolate the problem and eliminate the need to send your wireless device in for service. In the case that your wireless device is no longer covered by this limited warranty due to time or condition we have other options that you may utilize our out of warranty repair options. To obtain hardware repairs or replacement within the terms of this warranty, contact TCT Mobile to get an RMA number, include a copy of the original proof of warranty coverage (e.g. original copy of the dated bill of sale, invoice), the consumer's return address, your wireless carrier's name, alternate daytime mobile phone number, and email address with a complete problem description. Only ship the wireless device. Do not ship the SIM card, memory cards, or any other accessories such as the power adapter. You must properly package and ship the wireless device to the repair center.

TCT Mobile is not responsible for wireless devices that do not arrive at the service center. Upon receipt, the service center will verify the warranty conditions, repair, and return your wireless device to the address provided.

TCT Mobile is not responsible for wireless devices that do not arrive at the service center. Upon receipt, the service center will verify the warranty conditions, repair, and return your wireless device to the address provided.

**My phone cannot switch on**

- Check the battery contacts, remove and reinstall your battery, then turn your phone on
- Check the battery power level, charge for at least 20 minutes

If it still does not work, please use User Data Format to reset the phone<sup>(1)</sup>

**My phone is frozen or has not responded for several minutes**

- Restart your phone by pressing and holding the key
- Remove the battery and re-insert it, then restart the phone
- If it still does not work, please use User Data Format to reset the phone<sup>(1)</sup>

**My phone turns off by itself**

- Check that your keypad is locked when you are not using your phone, and make sure power off key is not mis-contacted due to unlocking keypad.
- Check the battery charge level
- If it still does not work, please use User Data Format to reset the phone<sup>(1)</sup>

27

against the ear on the opposite side to the device, if any. Read and follow the directions from the manufacturer of your implantable medical device. If you have any questions about using your mobile device with your implantable medical device, consult your healthcare provider.

To avoid hearing impairment, answer the call before holding your mobile phone to your ear. Also move the handset away from your ear while using the "hands-free" option because the amplified volume might cause hearing damage.

It is recommended to have proper supervision while small children use your mobile phone.

When replacing the cover please note that your mobile phone may contain substances that could create an allergic reaction.

Always handle your mobile phone with care and keep it in a clean and dust-free place.

Do not allow your mobile phone to be exposed to adverse weather or environmental conditions (moisture, humidity, rain, infiltration of liquids, dust, sea air, etc.). The manufacturer's recommended operating temperature range is -10°C (14°F) to +55°C (131°F) (the max value depends on device, materials and housing paint/texture).

Over 55°C (131°F) the legibility of the mobile phone's display may be impaired, though this is temporary and not serious.

Do not open or attempt to repair your mobile phone yourself. Do not drop, throw or try to bend your mobile phone.

Do not paint it.

Use only batteries, battery chargers, and accessories which are recommended by TCT Mobile Limited and its affiliates and are compatible with your mobile phone model. TCT Mobile Limited and its affiliates disclaim any liability for damage caused by the use of other chargers or batteries.

Your mobile phone should not be disposed of in a municipal waste. Please check local regulations for disposal of electronic products.

Remember to make back-up copies or keep a written record of all important information stored in your mobile phone.

Some people may suffer epileptic seizures or blackouts when exposed to flashing lights, or when playing video games. These seizures or blackouts may occur even if a person never had a previous seizure or blackout. If you have experienced seizures or blackouts, or if you have a family history of such occurrences, please consult your doctor before playing video games on your mobile phone or enabling a flashing-lights feature on your mobile phone. Parents should monitor their children's use of video games or other features that incorporate flashing lights on the mobile phones. All persons should discontinue use and consult a doctor if any of the following symptoms occur: convulsion, eye or muscle twitching, loss of awareness, involuntary movements, or disorientation. To limit the likelihood of such symptoms, please take the following safety precautions:

- Play at the farthest distance possible from the screen.

20

## Troubleshooting .....

Before contacting the service center, you are advised to follow the instructions below:

- You are advised to fully charge ( ) the battery for optimal operation.
- Avoid storing large amounts of data in your phone as this may affect its performance.
- Use User Data Format to perform phone formatting, (to perform User Data format, hold down # while simultaneously pressing the power on/off key). ALL User phone data: contacts, photos, messages and files will be lost permanently.

and carry out the following checks:

**My phone cannot connect to a network or "No service" is displayed**

- Try connecting in another location
- Verify the network coverage with your operator
- Check with your operator that your SIM card is valid
- Try selecting the available network(s) manually
- Try connecting at a later time if the network is overloaded

**My phone cannot connect to the Internet**

- Check that the IMEI number (press **\*#06#**) is the same as the one printed on your warranty card or box
- Make sure that the internet access service of your SIM card is available

Check your phone's Internet connecting settings

- Make sure you are in a place with network coverage
- Try connecting at a later time or another location

**Invalid SIM card**

- Make sure the SIM card has been correctly inserted
- Make sure the chip on your SIM card is not damaged or scratched
- Make sure the service of your SIM card is available

21

When you play games on your mobile phone, you may experience occasional discomfort in your hands, arms, shoulders, neck, or other parts of your body. Follow these instructions to avoid problems such as tendinitis, carpal tunnel syndrome, or other musculoskeletal disorders:

- Take a minimum of a 15-minute break every hour of game playing.
- If your hands, wrists, or arms become tired or sore while playing, stop and rest for several hours before playing again.
- If you continue to have sore hands, wrists, or arms during or after playing, stop the game and see a doctor.

Prolonged exposure to music at full volume using the music player may damage your hearing. Set your mobile phone's volume to it's lowest setting prior to inserting headphones in your ears and adjust the volume to your preference. Only use headphones that are recommended by TCT Mobile Limited and its affiliates.

**• PRIVACY:**  
Please note that you must respect the laws and regulations in force in your jurisdiction or other jurisdiction(s) where you will use your mobile phone regarding taking photographs and recording sounds with your mobile phone. Pursuant to such laws and regulations, it may be strictly forbidden to take photographs and/or to record the voices of other people or any of their personal attributes, and reproduce or distribute them, as this may be considered to be an invasion of privacy.

It is the user's sole responsibility to ensure that prior authorization be obtained, if necessary, in order to record private or confidential conversations or take a photograph of another person; the manufacturer, the seller or vendor of your mobile phone (including the operator) disclaim any liability which may result from the improper use of the mobile phone.

**• BATTERY AND ACCESSORIES:**  
Before removing the battery from your mobile phone, please make sure that the mobile phone is switched off.

Observe the following precautions for battery use:

- Do not attempt to open the battery (due to the risk of toxic fumes and burns).
- Do not puncture, disassemble or cause a short-circuit in a battery.
- Do not burn or dispose of a used battery in the garbage or store it at temperatures above 60°C (140°F).

Batteries must be disposed of in accordance with locally applicable environmental regulations. Only use the battery for the purpose for which it was designed. Never use damaged batteries or those not recommended by TCT Mobile Limited and/or its affiliates.

This symbol on your mobile phone, the battery and the accessories means that these products must be taken to collection points at the end of their life:

- Municipal waste disposal centers with specific bins for these items of equipment.
- Collection bins at points of sale.

22

21

22

**My phone cannot charge properly**

- Make sure you are using an Alcatel battery and the charger from the box
- Clean the battery contact if it's dirty.
- Make sure your battery is inserted properly before plugging in the charger.
- Make sure that your battery is not completely discharged; if the battery power is empty for a long time, it may take around 20 minutes to display the battery charger indicator on the screen
- Make sure charging is carried out under normal conditions (0°C (32°F) to +40°C (104°F))
- When abroad, check that the voltage input is compatible

**My phone cannot connect to a network or "No service" is displayed**

- Try connecting in another location
- Verify the network coverage with your operator
- Check with your operator that your SIM card is valid
- Try selecting the available network(s) manually
- Try connecting at a later time if the network is overloaded

**My phone cannot connect to the Internet**

- Check that the IMEI number (press **\*#06#**) is the same as the one printed on your warranty card or box
- Make sure that the internet access service of your SIM card is available

Check your phone's Internet connecting settings

- Make sure you are in a place with network coverage
- Try connecting at a later time or another location

**Invalid SIM card**

- Make sure the SIM card has been correctly inserted
- Make sure the chip on your SIM card is not damaged or scratched
- Make sure the service of your SIM card is available

23

They will then be recycled, preventing substances being disposed of in the environment, so that their components can be reused.

**In European Union countries:**  
These collection points are accessible free of charge. All products with this sign must be brought to these collection points.

**In non European Union jurisdictions:**  
Items of equipment with this symbol are not to be thrown into ordinary bins if your jurisdiction or your region has suitable recycling and collection facilities; instead they are to be taken to collection points for them to be recycled.

In the United States you may learn more about CTIA's Recycling Program at [www.recyclewirelessphones.com](http://www.recyclewirelessphones.com)

**CAUTION: RISK OF EXPLOSION IF BATTERY IS REPLACED BY AN INCORRECT TYPE. DISPOSE OF USED BATTERIES ACCORDING TO THE INSTRUCTIONS**

**• CHARGERS**  
Home A.C./Travel chargers will operate within the temperature range of: 0°C (32°F) to 40°C (104°F).

The chargers designed for your mobile phone meet with the standard for safety of information technology equipment and office equipment use. Due to different applicable electrical specifications, a charger you purchased in one jurisdiction may not work in another jurisdiction. They should be used for this purpose only.

**Characteristics of power supply** (depending on the country):  
Travel charger: Input: 100-240 V, 50/60 Hz, 150 mA  
Output: 5 V, 350/400/500 mA  
Lithium 650/750 mAh

**• RADIO WAVES:**  
THIS MOBILE PHONE MEETS THE GOVERNMENT'S REQUIREMENTS FOR EXPOSURE TO RADIO WAVES.

Your mobile phone is a radio transmitter and receiver. It is designed and manufactured not to exceed the emission limits for exposure to radio-frequency (RF) energy. These limits are part of comprehensive guidelines and establish permitted levels of RF energy for the general population. The guidelines are based on standards that were developed by independent scientific organizations through periodic and thorough evaluation of scientific studies. These guidelines include a substantial safety margin designed to ensure the safety of all persons, regardless of age and health.

The exposure standard for mobile phones employs a unit of measurement known as the Specific Absorption Rate, or SAR. The SAR limit set by public authorities such as the Federal Communications Commission of the US Government (FCC), or by Industry Canada, is 1.6 W/kg averaged over 1 gram of body tissue. Tests for SAR are conducted using standard operating positions with the mobile phone transmitting at its highest certified power level in all tested frequency bands.

Although the SAR is determined at the highest certified power level, 22

22

22

22

22

22

22

22

**Unable to make outgoing calls**

- Make sure you have dialed a valid number and press the key
- For international calls, check the country and area codes
- Make sure your phone is connected to a network, and the network is not overloaded or unavailable
- Check your subscription status with your operator (credit, SIM card valid, etc.)
- Make sure you have not barred outgoing calls
- Make sure that your phone is not in flight mode

**Unable to receive incoming calls**

- Make sure your phone is switched on and connected to a network (check for overloaded or unavailable network)
- Check your subscription status with your operator (credit, SIM card valid, etc.)
- Make sure you have not forwarded incoming calls
- Make sure that you have not barred certain calls
- Make sure that your phone is not in flight mode

**The caller's name/number does not appear when a call is received**

- Check that you have subscribed to this service with your operator
- Your caller has concealed his/her name or number

**I cannot find my contacts**

- Make sure your SIM card is not broken
- Make sure your SIM card is inserted properly
- Import all contacts stored in SIM card to phone

**The sound quality of the calls is poor**

- You can adjust the volume during a call by pressing the key
- Check the network strength
- Make sure that the receiver, connector or speaker on your phone is clean

23

23

23

23

23

the actual SAR level of the mobile phone while operating can be well below the maximum value. This is because the mobile phone is designed to operate at multiple power levels so as to use only the power required to reach the network. In general, the closer you are to a wireless base station antenna, the lower the power output of the mobile phone. Before a mobile phone model is available for sale to the public, compliance with national regulations and standards must be shown. The highest SAR value for this model mobile phone when tested is 0,964 W/Kg for use at the ear and 1.15 W/Kg for use close to the body.

While there may be differences between the SAR levels of various mobile phones and at various positions, they all meet the government requirement for RF exposure. For body-worn operation, the mobile phone meets FCC RF exposure guidelines provided that it is used with a non-metallic accessory with the handset at least 1.5 cm from the body. Use of other accessories may not ensure compliance with FCC RF exposure guidelines.

Additional information on SAR can be found on the Cellular Telecommunications & Internet Association (CTIA) Web site: <http://www.phonefacts.net>

The World Health Organization (WHO) considers that present scientific information does not indicate the need for any special precautions for use of mobile phones. If individuals are concerned, they might choose to limit their own or their children's RF exposure by limiting the length of calls, or using "hands-free" devices to keep mobile phones away from the head and body. (fact sheet n°193). Additional WHO information about electromagnetic fields and public health are available on the following website: <http://www.who.int/peh-emf>.

Note: This equipment has been tested and found to comply with the limits for a Class B digital device pursuant to part 15 of the FCC Rules. These limits are designed to provide reasonable protection against harmful interference in a residential installation. This equipment generates, uses and can radiate radio frequency energy and, if not installed and used in accordance with the instructions, may cause harmful interference to radio communications. However, there is no guarantee that interference to radio or television reception, which can be determined by turning the equipment off and on, the user is encouraged to try to correct the interference by one or more of the following measures:

- Reorient or relocate the receiving antenna.
- Increase the separation between the equipment and receiver.
- Connect the equipment into an outlet on a circuit different from that to which the receiver is connected.
- Consult the dealer or an experienced radio/TV technician for help.

Changes or modifications not expressly approved by the party responsible for compliance could void the user's authority to operate the equipment.

24

24

24

24

24

24

24

24

24

24

24

24

24

24

24

24

24

24

24

24

24

24

24

24

24

24

24

24

24