



HAC RF TEST REPORT

No. 2011HAC00009

For

TCT Mobile Limited

GSM/GPRS/EDGE 850/1900 dual band mobile phone

Onyx wifi A

one touch 813A

With

Hardware Version: PIO

Software Version: SW460

FCCID: RAD172

Results Summary: M Category = M3

Issued Date: 2011-04-22



No. DGA-PL-114/01-02

Note:

The test results in this test report relate only to the devices specified in this report. This report shall not be reproduced except in full without the written approval of TMC Beijing.

Test Laboratory:

TMC Beijing, Telecommunication Metrology Center of MIIT

No. 52, Huayuan Bei Road, Haidian District, Beijing, P. R. China 100191.

Tel:+86(0)10-62304633-2079, Fax:+86(0)10-62304793 Email:welcme@emcite.com. www.emcite.com

TABLE OF CONTENT

| | |
|--|-----------|
| 1 TEST LABORATORY | 3 |
| 1.1 TESTING LOCATION..... | 3 |
| 1.2 TESTING ENVIRONMENT..... | 3 |
| 1.3 PROJECT DATA..... | 3 |
| 1.4 SIGNATURE..... | 3 |
| 2 CLIENT INFORMATION | 4 |
| 2.1 APPLICANT INFORMATION..... | 4 |
| 2.2 MANUFACTURER INFORMATION..... | 4 |
| 3 EQUIPMENT UNDER TEST (EUT) AND ANCILLARY EQUIPMENT (AE) | 4 |
| 3.1 ABOUT EUT..... | 4 |
| 3.2 INTERNAL IDENTIFICATION OF EUT USED DURING THE TEST..... | 4 |
| 3.3 INTERNAL IDENTIFICATION OF AE USED DURING THE TEST..... | 4 |
| 4 CONDUCTED OUTPUT POWER MEASUREMENT | 5 |
| 4.1 SUMMARY..... | 5 |
| 4.2 CONDUCTED POWER..... | 5 |
| 5. REFERENCE DOCUMENTS | 5 |
| 5.1 REFERENCE DOCUMENTS FOR TESTING..... | 5 |
| 6 OPERATIONAL CONDITIONS DURING TEST | 5 |
| 6.1 HAC MEASUREMENT SET-UP..... | 5 |
| 6.2 PROBE SPECIFICATION..... | 6 |
| 6.3 TEST ARCH PHANTOM & PHONE POSITIONER..... | 7 |
| 6.4 ROBOTIC SYSTEM SPECIFICATIONS..... | 8 |
| 7 EUT ARRANGEMENT | 8 |
| 7.1 WD RF EMISSION MEASUREMENTS REFERENCE AND PLANE..... | 8 |
| 8 SYSTEM VALIDATION | 9 |
| 8.1 VALIDATION PROCEDURE..... | 9 |
| 8.2 VALIDATION RESULT..... | 10 |
| 9 PROBE MODULATION FACTOR | 10 |
| 9.1 MODULATION FACTOR TEST PROCEDURE..... | 11 |
| 9.2 MODULATION FACTOR..... | 11 |
| 10 RF TEST PROCEDURES | 12 |
| 11 HAC RF TEST DATA SUMMARY | 13 |
| 11.1 MEASUREMENT RESULTS (E-FIELD)..... | 13 |
| 11.2 MEASUREMENT RESULTS (H-FIELD)..... | 13 |
| 11.3 TOTAL M-RATING..... | 13 |
| 12 ANSI C 63.19-2007 LIMITS | 14 |
| 13 MEASUREMENT UNCERTAINTY | 14 |
| 14 MAIN TEST INSTRUMENTS | 16 |
| 15 CONCLUSION | 16 |
| ANNEX A TEST LAYOUT | 17 |
| ANNEX B TEST PLOTS | 18 |
| ANNEX C SYSTEM VALIDATION RESULT | 34 |
| ANNEX D PROBE CALIBRATION CERTIFICATE | 38 |

1 Test Laboratory

1.1 Testing Location

Company Name: TMC Beijing, Telecommunication Metrology Center of MIIT
Address: No 52, Huayuan beilu, Haidian District, Beijing,P.R.China
Postal Code: 100191
Telephone: +86-10-62304633
Fax: +86-10-62304793

1.2 Testing Environment

Temperature: 18°C~25 °C,
Relative humidity: 30%~ 70%
Ground system resistance: < 0.5 Ω

Ambient noise is checked and found very low and in compliance with requirement of standards.
Reflection of surrounding objects is minimized and in compliance with requirement of standards.

1.3 Project Data

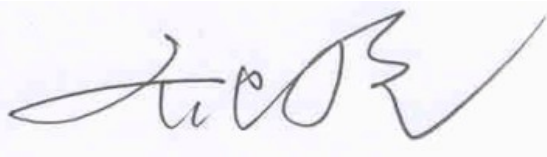
Project Leader: Qi Dianyuan
Test Engineer: Lin Hao
Testing Start Date: March 24, 2011
Testing End Date: March 24, 2011

1.4 Signature



Lin Hao

(Prepared this test report)



Qi Dianyuan

(Reviewed this test report)



Xiao Li

Deputy Director of the laboratory
(Approved this test report)

2 Client Information

2.1 Applicant Information

Company Name: TCT Mobile Limited
 Address /Post: 5F, E building, No. 232, Liang Jing Road ZhangJiang High-Tech Park,
 Pudong Area Shanghai, P.R. China. 201203
 City: Shanghai
 Postal Code: 201203
 Country: P. R. China
 Telephone: 0086-21-61460890
 Fax: 0086-21-61460602

2.2 Manufacturer Information

Company Name: TCT Mobile Limited
 Address /Post: 5F, E building, No. 232, Liang Jing Road ZhangJiang High-Tech Park,
 Pudong Area Shanghai, P.R. China. 201203
 City: Shanghai
 Postal Code: 201203
 Country: P. R. China
 Telephone: 0086-21-61460890
 Fax: 0086-21-61460602

3 Equipment Under Test (EUT) and Ancillary Equipment (AE)

3.1 About EUT

EUT Description: GSM/GPRS/EDGE 850/1900 dual band mobile phone
 Model Name: Onyx wifi A
 Marketing Name: one touch 813A
 Frequency Band: GSM 850/1900

3.2 Internal Identification of EUT used during the test

| EUT ID* | SN or IMEI | HW Version | SW Version |
|---------|-----------------|------------|------------|
| EUT1 | 012640000010198 | PIO | SW460 |

*EUT ID: is used to identify the test sample in the lab internally.

3.3 Internal Identification of AE used during the test

| AE ID* | Description | Model | SN | Manufacturer |
|--------|-------------|--------------|----|--------------|
| AE1 | Battery | CAB31L0000C1 | / | BYD |
| AE2 | Battery | CAB31L0000C2 | / | BAK |

*AE ID: is used to identify the test sample in the lab internally

4 CONDUCTED OUTPUT POWER MEASUREMENT

4.1 Summary

During the process of testing, the EUT was controlled via Rhode & Schwarz Digital Radio Communication tester (CMU-200) to ensure the maximum power transmission and proper modulation. This result contains conducted output power for the EUT. In all cases, the measured output power should be greater and within 5% than EMI measurement.

4.2 Conducted Power

| GSM 850MHZ | Conducted Power (dBm) | | |
|----------------|------------------------|-----------------------|------------------------|
| | Channel 251(848.8MHz) | Channel 190(836.6MHz) | Channel 128(824.2MHz) |
| | 32.55 | 32.47 | 32.42 |
| GSM 1900MHZ | Conducted Power (dBm) | | |
| | Channel 810(1909.8MHz) | Channel 661(1880MHz) | Channel 512(1850.2MHz) |
| | 30.00 | 30.12 | 30.68 |

5. Reference Documents

5.1 Reference Documents for testing

The following document listed in this section is referred for testing.

| Reference | Title | Version |
|------------------|--|--------------|
| ANSI C63.19-2007 | American National Standard for Methods of Measurement of Compatibility between Wireless Communication Devices and Hearing Aids | 2007 Edition |

6 OPERATIONAL CONDITIONS DURING TEST

6.1 HAC MEASUREMENT SET-UP

These measurements are performed using the DASY5 NEO automated dosimetric assessment system. It is made by Schmid & Partner Engineering AG (SPEAG) in Zurich, Switzerland. It consists of high precision robotics system (Stäubli), robot controller, Intel Core2 computer, near-field probe, probe alignment sensor. The robot is a six-axis industrial robot performing precise movements. A cell controller system contains the power supply, robot controller, teach pendant (Joystick), and remote control, is used to drive the robot motors. The PC consists of the HP Intel Core2 1.86 GHz computer with Windows XP system and HAC Measurement Software DASY5 NEO, A/D interface card, monitor, mouse, and keyboard. The Stäubli Robot is connected to the cell controller to allow software manipulation of the robot. A data acquisition electronic (DAE) circuit performs the signal amplification, signal multiplexing, AD-conversion, offset measurements, mechanical surface detection, collision detection, etc. is connected to the Electro-optical coupler (EOC). The EOC performs the conversion from the optical into digital electric signal of the DAE and transfers data to the PC plug-in card.

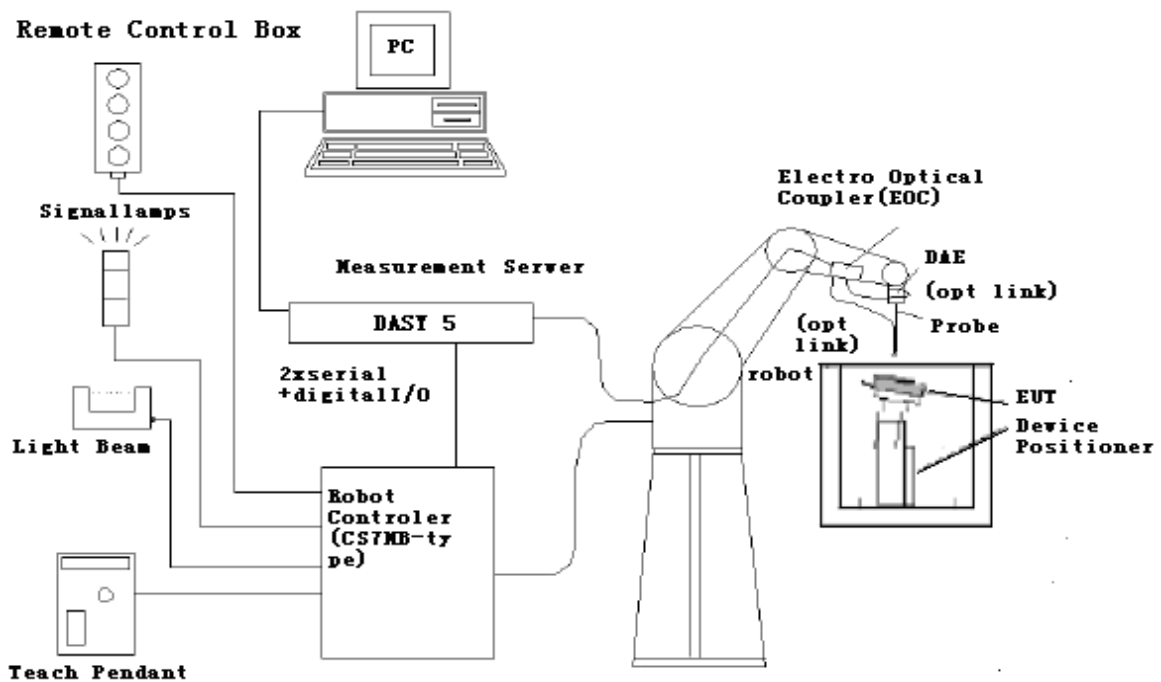


Fig. 1 HAC Test Measurement Set-up

The DAE4 consists of a highly sensitive electrometer-grade preamplifier with auto-zeroing, a channel and gain-switching multiplexer, a fast 16 bit AD-converter and a command decoder and control logic unit. Transmission to the PC-card is accomplished through an optical downlink for data and status information and an optical uplink for commands and clock lines. The mechanical probe mounting device includes two different sensor systems for frontal and sidewise probe contacts. They are also used for mechanical surface detection and probe collision detection. The robot uses its own controller with a built in VME-bus computer.

6.2 Probe Specification

6.2.1 E-Field Probe Description

| | |
|---------------|---|
| Construction | One dipole parallel, two dipoles normal to probe axis Built-in shielding against static charges PEEK enclosure material |
| Calibration | In air from 100 MHz to 3.0 GHz (absolute accuracy $\pm 6.0\%$, $k=2$) |
| Frequency | 40 MHz to > 6 GHz (can be extended to < 20 MHz) Linearity: ± 0.2 dB (100 MHz to 3 GHz) |
| Directivity | ± 0.2 dB in air (rotation around probe axis) ± 0.4 dB in air (rotation normal to probe axis) |
| Dynamic Range | 2 V/m to > 1000 V/m; Linearity: ± 0.2 dB |
| Dimensions | Overall length: 330 mm (Tip: 16 mm) Tip diameter: 8 mm (Body: 12 mm) Distance from probe tip to dipole centers: 2.5 mm |



[ER3DV6]

Application General near-field measurements up to 6 GHz
 Field component measurements
 Fast automatic scanning in phantoms

6.2.2 H-Field Probe Description

Construction Three concentric loop sensors with 3.8 mm loop diameters
 Resistively loaded detector diodes for linear response
 Built-in shielding against static charges
 PEEK enclosure material (resistant to organic solvents,
 e.g., glycoether)



[H3DV6]

Frequency 200 MHz to 3 GHz (absolute accuracy $\pm 6.0\%$, $k=2$); Output
 linearized

Directivity ± 0.2 dB (spherical isotropy error)

Dynamic Range 10 mA/m to 2 A/m at 1 GHz

E-Field Interference < 10% at 3 GHz (for plane wave)

Dimensions Overall length: 330 mm (Tip: 40 mm)
 Tip diameter: 6 mm (Body: 12 mm)
 Distance from probe tip to dipole centers: 3 mm

Application General magnetic near-field measurements up to 3 GHz (in
 air or liquids)
 Field component measurements
 Surface current measurements
 Low interaction with the measured field

6.3 Test Arch Phantom & Phone Positioner

The Test Arch phantom should be positioned horizontally on a stable surface. Reference markings on the Phantom allow the complete setup of all predefined phantom positions and measurement grids by manually teaching three points in the robot. It enables easy and well defined positioning of the phone and validation dipoles as well as simple teaching of the robot (Dimensions: 370 x 370 x 370 mm).

The Phone Positioner supports accurate and reliable positioning of any phone with effect on near field $< \pm 0.5$ dB.

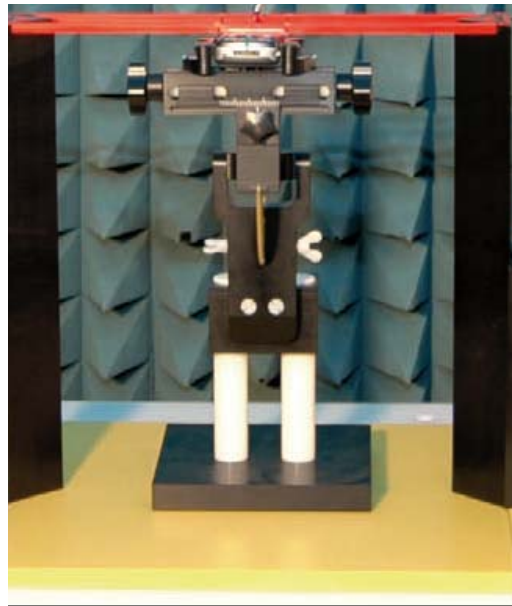


Fig. 2 HAC Phantom & Device Holder

6.4 Robotic System Specifications

Specifications

Positioner: Stäubli Unimation Corp. Robot Model: RX160L

Repeatability: ± 0.02 mm

No. of Axis: 6

Data Acquisition Electronic (DAE) System

Cell Controller

Processor: Intel Core2

Clock Speed: 1.86 GHz

Operating System: Windows XP

Data Converter

Features: Signal Amplifier, multiplexer, A/D converter, and control logic

Software: DASY5 software

Connecting Lines: Optical downlink for data and status info.

Optical uplink for commands and clock

7 EUT ARRANGEMENT

7.1 WD RF Emission Measurements Reference and Plane

Figure 4 illustrates the references and reference plane that shall be used in the WD emissions measurement.

- The grid is 5 cm by 5 cm area that is divided into 9 evenly sized blocks or sub-grids.
- The grid is centered on the audio frequency output transducer of the WD (speaker or T-coil).
- The grid is located by reference to a reference plane. This reference plane is the planar area that contains the highest point in the area of the WD that normally rests against the user's ear
- The measurement plane is located parallel to the reference plane and 15 mm from it, out from

the phone. The grid is located in the measurement plane.

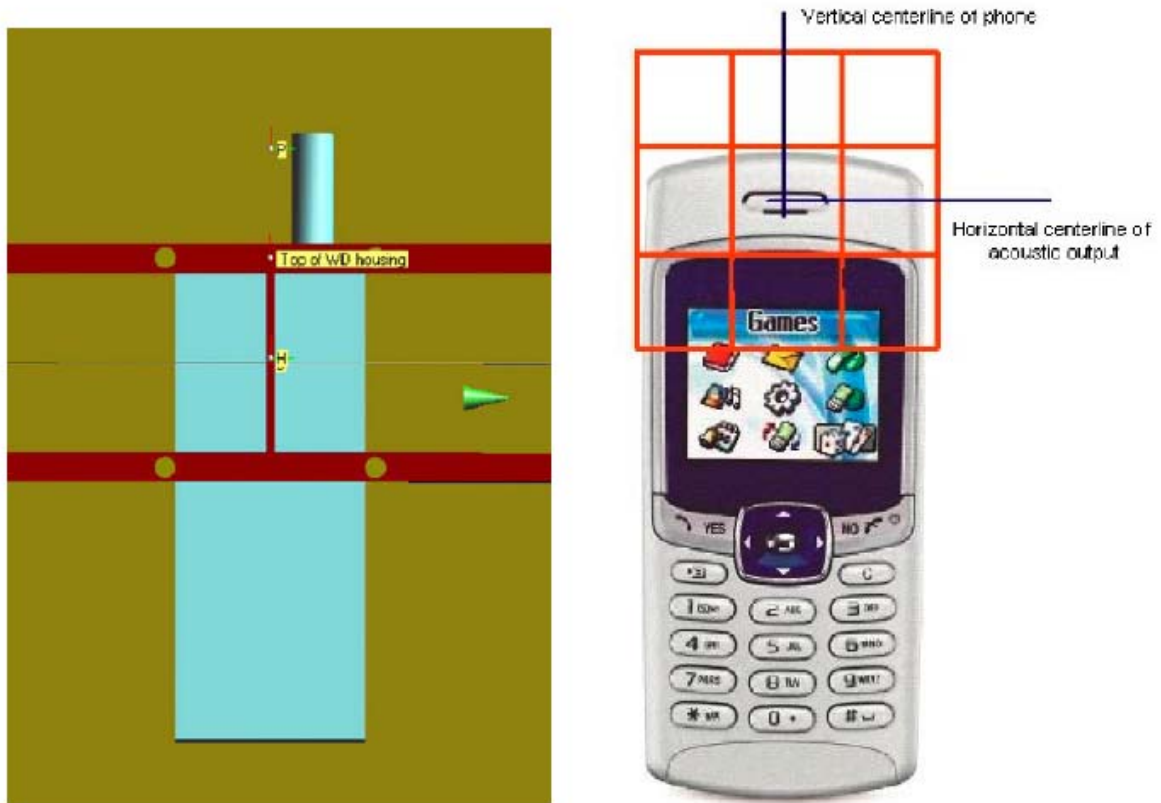


Fig. 3 WD reference and plane for RF emission measurements

8 SYSTEM VALIDATION

8.1 Validation Procedure

Place a dipole antenna meeting the requirements given in ANSI C63.19 D.5 in the position normally occupied by the WD. The dipole antenna serves as a known source for an electrical and magnetic output. Position the E-field and H-field probes so that:

- The probes and their cables are parallel to the coaxial feed of the dipole antenna
- The probe cables and the coaxial feed of the dipole antenna approach the measurement area from opposite directions
- The center point of the probe element(s) are 10 mm from the closest surface of the dipole elements.

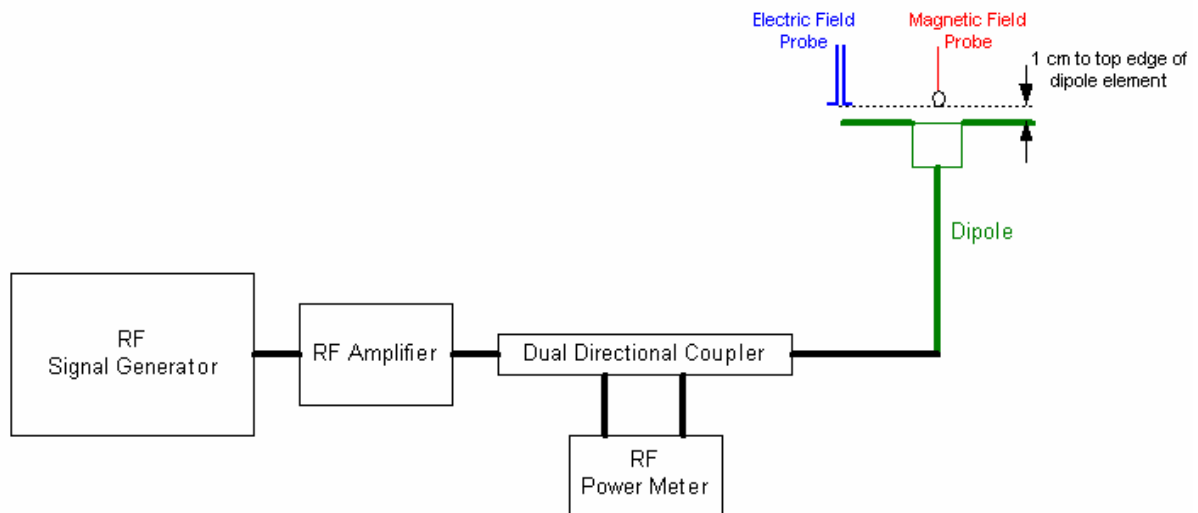


Fig. 4 Dipole Validation Setup

8.2 Validation Result

| E-Field Scan | | | | | | | |
|--------------|-----------------|------------------|-------|----------------------------------|--------------------------------|----------------------------|------------------------|
| Mode | Frequency (MHz) | Input Power (mW) | Power | Measured ¹ Value(V/m) | Target ² Value(V/m) | Deviation ³ (%) | Limit ⁴ (%) |
| CW | 835 | 100 | | 170.5 | 163.9 | +4.03% | ± 25 |
| CW | 1880 | 100 | | 133.6 | 137.7 | -2.98% | ± 25 |
| H-Field Scan | | | | | | | |
| Mode | Frequency (MHz) | Input Power (mW) | Power | Measured Value(A/m) | Target Value(A/m) | Deviation (%) | Limit (%) |
| CW | 835 | 100 | | 0.442 | 0.458 | -3.49% | ± 25 |
| CW | 1880 | 100 | | 0.450 | 0.463 | -2.81% | ± 25 |

Notes:

1. Please refer to the attachment for detailed measurement data and plot.
2. Target value is provided by SPEAD in the calibration certificate of specific dipoles.
3. Deviation (%) = 100 * (Measured value minus Target value) divided by Target value.
4. ANSI C63.19 requires values within ± 25% are acceptable, of which 12% is deviation and 13% is measurement uncertainty. Values independently validated for the dipole actually used in the measurements should be used, when available.

9 Probe Modulation Factor

The Probe Modulation Factor (PMF) is defined as the ratio of the field readings for a CW and a modulated signal with the equivalent Field Envelope Peak as defined in ANSI C63.19 (Chapter C.3.1). Calibration shall be made of the modulation response of the probe and its instrumentation chain. This Calibration shall be performed with the field probe, attached to the instrumentation that is to be used with it during the measurement. The response of the probe system to a CW field at the frequency(s) of interest is compared to its response to a modulated signal with equal peak amplitude. The field level of the test signals shall be more than 10dB above the ambient level and

the noise floor of the instrumentation being used. The ratio of the CW reading to that taken with a modulated field shall be applied to the readings taken of modulated fields of the specified type.

9.1 Modulation Factor Test Procedure

This may be done using the following procedure:

1. Fix the field probe in a set location relative to a field generating device, such as the reference dipole antenna, as illustrated in Figure 6.
2. Illuminate the probe using the wireless device connected to the reference dipole with a test signal at the intended measurement frequency, Ensure there is sufficient field coupling between the probe and the antenna so the resulting reading is greater than 10 dB above the probe system noise floor but within the systems operating range.
3. Record the amplitude applied to the antenna during transmission and the field strength measured by the E-field probe located near the tip of the dipole antenna
4. Replace the wireless device with an RF signal generator producing an unmodulated CW signal and set to the wireless device operating frequency.
5. Set the amplitude of the unmodulated signal to equal that recorded from the wireless device.
6. Record the reading of the probe measurement system of the unmodulated signal.
7. The ratio, in linear units, of the probe reading in Step 6) to the reading in Step 3) is the E-field modulation factor. $PMF_E = E_{CW} / E_{mod}$ ($PMF_H = H_{CW} / H_{mod}$)
8. Repeat the previous steps using the H-field probe, except locate the probe at the center of the dipole.

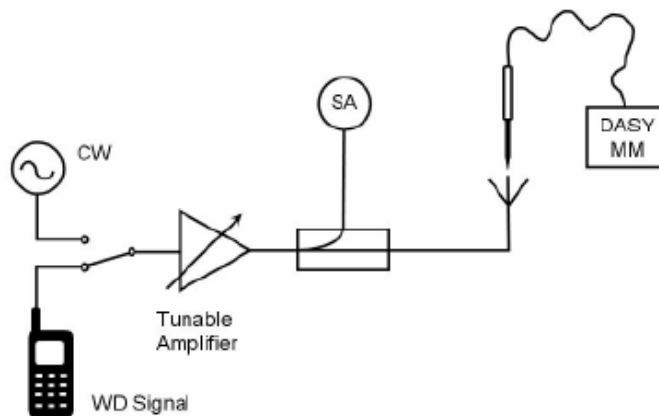


Fig. 5 Probe Modulation Factor Test Setup

9.2 Modulation Factor

9.2.1 E-Field

| Frequency (MHz) | Mode | Input Power (mW) | E-Field Measured Value (V/m) | Probe Modulation Factor |
|-----------------|-------|------------------|------------------------------|-------------------------|
| 835 | CW | 100 | 163.9 | \ |
| | WCDMA | 100 | 173.9 | 1.00 |
| | GSM | 100 | 60.2 | 2.88 |
| 1880 | CW | 100 | 137.7 | \ |
| | WCDMA | 100 | 134.8 | 1.00 |
| | GSM | 100 | 46.6 | 2.88 |

9.2.2 H-Field

| Frequency (MHz) | Mode | Input Power (mW) | H-Field Measured Value (A/m) | Probe Modulation Factor |
|-----------------|-----------|------------------|------------------------------|-------------------------|
| 835 | CW | 100 | 0.458 | \ |
| | WCDMA | 100 | 0.425 | 1.00 |
| | GSM | 100 | 0.147 | 2.88 |
| 1880 | CW | 100 | 0.463 | \ |
| | WCDMA | 100 | 0.411 | 1.00 |
| | GSM | 100 | 0.143 | 2.88 |

10 RF TEST PROCEDURES

The evaluation was performed with the following procedure:

- 1) Confirm proper operation of the field probe, probe measurement system and other instrumentation and the positioning system.
- 2) Position the WD in its intended test position. The gauge block can simplify this positioning. Note that a separate E-field and H-field gauge block will be needed if the center of the probe sensor elements are at different distances from the tip of the probe.
- 3) Configure the WD normal operation for maximum rated RF output power, at the desired channel and other operating parameters (e.g., test mode), as intended for the test.
- 4) The center sub-grid shall centered on the center of the T-Coil mode axial measurement point or the acoustic output, as appropriate. Locate the field probe at the initial test position in the 50 mm by 50 mm grid, which is contained in the measurement plane. If the field alignment method is used, align the probe for maximum field reception.
- 5) Record the reading.
- 6) Scan the entire 50 mm by 50 mm region in equally spaced increments and record the reading at each measurement point. The distance between measurement points shall be sufficient to assure the identification of the maximum reading.
- 7) Identify the five contiguous sub-grids around the center sub-grid with the lowest maximum field strength readings. Thus the six areas to be used to determine the WD's highest emissions are identified and outlined for the final manual scan. Please note that a maximum of five blocks can be excluded for both E-field and H-field measurements for the WD output being measured. Stated another way, the center sub-grid and three others must be common to both the E-field and H-field measurements.
- 8) Identify the maximum field reading within the non-excluded sub-grids identified in Step 7)
- 9) Convert the maximum field strength reading identified in Step 8) to V/m or A/m, as appropriate. For probes which require a probe modulation factor, this conversion shall be done using the appropriate probe modulation factor and the calibration.
- 10) Repeat Step 1) through Step 10) for both the E-field and H-field measurements.
- 11) Compare this reading to the categories in ANSI C63.19 Clause 7 and record the resulting category. The lowest category number listed in 7.2, Table 7.4, or Table 7.5 obtained in Step 10) for either E- or H-field determines the M category for the audio coupling mode assessment. Record the WD category rating.

11 HAC RF TEST DATA SUMMARY

11.1 Measurement Results (E-Field)

| Frequency | | AWF | Measured Value (V/m) | Power Drift (dB) | Category |
|-----------------|---------|-----|-------------------------|---------------------|-------------------------|
| MHz | Channel | | | | |
| GSM 850 | | | | | |
| 848.8 | 251 | -5 | 154.5 | -0.041 | M3 (see Fig B.1) |
| 836.6 | 190 | -5 | 146.7 | -0.030 | M4 (see Fig B.2) |
| 824.2 | 128 | -5 | 151.1 | -0.069 | M3 (see Fig B.3) |
| GSM 1900 | | | | | |
| 1909.8 | 810 | -5 | 72 | -0.029 | M3 (see Fig B.4) |
| 1880 | 661 | -5 | 74.5 | -0.026 | M3 (see Fig B.5) |
| 1850.2 | 512 | -5 | 78.3 | 0.00618 | M3 (see Fig B.6) |

11.2 Measurement Results (H-Field)

| Frequency | | AWF | Measured Value (A/m) | Power Drift (dB) | Category |
|-----------------|---------|-----|-------------------------|---------------------|--------------------------|
| MHz | Channel | | | | |
| GSM 850 | | | | | |
| 848.8 | 251 | -5 | 0.283 | 0.102 | M4 (see Fig B.7) |
| 836.6 | 190 | -5 | 0.271 | -0.016 | M4 (see Fig B.8) |
| 824.2 | 128 | -5 | 0.244 | -0.00775 | M4 (see Fig B.9) |
| GSM 1900 | | | | | |
| 1909.8 | 810 | -5 | 0.221 | -0.016 | M3 (see Fig B.10) |
| 1880 | 661 | -5 | 0.231 | -0.00817 | M3 (see Fig B.11) |
| 1850.2 | 512 | -5 | 0.239 | -0.035 | M3 (see Fig B.12) |

11.3 Total M-rating

| Mode | Maximum value of peak Total E-Field (V/m) | Maximum value of peak Total H-Field (A/m) | E-Field M Rating | H-Field M Rating | Total M Rating |
|---------------------|---|---|---------------------|---------------------|-----------------------------|
| GSM 850 | 154.5 | 0.283 | M3 (AWF -5 dB) | M4 (AWF -5 dB) | M3 (see Fig B.13) |
| GSM 1900 | 78.3 | 0.239 | M3 (AWF -5 dB) | M3 (AWF -5 dB) | M3 (see Fig B.14) |

12 ANSI C 63.19-2007 LIMITS

Table 1: Telephone near-field categories in linear units

| Category | | Telephone RF parameters < 960 MHz | | | |
|----------------|-----|-----------------------------------|-----|-------------------|-----|
| Near field | AWF | E-field emissions | | H-field emissions | |
| Category M1/T1 | 0 | 631.0 to 1122.0 | V/m | 1.91 to 3.39 | A/m |
| | -5 | 473.2 to 841.4 | V/m | 1.43 to 2.54 | A/m |
| Category M2/T2 | 0 | 354.8 to 631.0 | V/m | 1.07 to 1.91 | A/m |
| | -5 | 266.1 to 473.2 | V/m | 0.80 to 1.43 | A/m |
| Category M3/T3 | 0 | 199.5 to 354.8 | V/m | 0.60 to 1.07 | A/m |
| | -5 | 149.6 to 266.1 | V/m | 0.45 to 0.80 | A/m |
| Category M4/T4 | 0 | < 199.5 | V/m | < 0.60 | A/m |
| | -5 | < 149.6 | V/m | < 0.45 | A/m |
| Category | | Telephone RF parameters > 960 MHz | | | |
| Near field | AWF | E-field emissions | | H-field emissions | |
| Category M1/T1 | 0 | 199.5 to 354.8 | V/m | 0.60 to 1.07 | A/m |
| | -5 | 149.6 to 266.1 | V/m | 0.45 to 0.80 | A/m |
| Category M2/T2 | 0 | 112.2 to 199.5 | V/m | 0.34 to 0.60 | A/m |
| | -5 | 84.1 to 149.6 | V/m | 0.25 to 0.45 | A/m |
| Category M3/T3 | 0 | 63.1 to 112.2 | V/m | 0.19 to 0.34 | A/m |
| | -5 | 47.3 to 84.1 | V/m | 0.14 to 0.25 | A/m |
| Category M4/T4 | 0 | < 63.1 | V/m | < 0.19 | A/m |
| | -5 | < 47.3 | V/m | < 0.14 | A/m |

13 MEASUREMENT UNCERTAINTY

| No. | Error source | Type | Uncertainty Value (%) | Prob. Dist. | k | c _i E | c _i H | Standard Uncertainty (%) u _i (%) E | Standard Uncertainty (%) u _i (%) H | Degree of freedom V _{eff} or v _i |
|---------------------------|---------------------|------|-----------------------|-------------|------------|---------------------|---------------------|---|---|--|
| Measurement System | | | | | | | | | | |
| 1 | Probe Calibration | B | 5. | N | 1 | 1 | 1 | 5.1 | 5.1 | ∞ |
| 2 | Axial Isotropy | B | 4.7 | R | $\sqrt{3}$ | 1 | 1 | 2.7 | 2.7 | ∞ |
| 3 | Sensor Displacement | B | 16.5 | R | $\sqrt{3}$ | 1 | 0.145 | 9.5 | 1.4 | ∞ |
| 4 | Boundary Effects | B | 2.4 | R | $\sqrt{3}$ | 1 | 1 | 1.4 | 1.4 | ∞ |
| 5 | Linearity | B | 4.7 | R | $\sqrt{3}$ | 1 | 1 | 2.7 | 2.7 | ∞ |

| | | | | | | | | | | |
|--|--------------------------------|--------------|------|---|------------|---|------|------|------|----------|
| 6 | Scaling to Peak Envelope Power | B | 2.0 | R | $\sqrt{3}$ | 1 | 1 | 1.2 | 1.2 | ∞ |
| 7 | System Detection Limit | B | 1.0 | R | $\sqrt{3}$ | 1 | 1 | 0.6 | 0.6 | ∞ |
| 8 | Readout Electronics | B | 0.3 | N | 1 | 1 | 1 | 0.3 | 0.3 | ∞ |
| 9 | Response Time | B | 0.8 | R | $\sqrt{3}$ | 1 | 1 | 0.5 | 0.5 | ∞ |
| 10 | Integration Time | B | 2.6 | R | $\sqrt{3}$ | 1 | 1 | 1.5 | 1.5 | ∞ |
| 11 | RF Ambient Conditions | B | 3.0 | R | $\sqrt{3}$ | 1 | 1 | 1.7 | 1.7 | ∞ |
| 12 | RF Reflections | B | 12.0 | R | $\sqrt{3}$ | 1 | 1 | 6.9 | 6.9 | ∞ |
| 13 | Probe Positioner | B | 1.2 | R | $\sqrt{3}$ | 1 | 0.67 | 0.7 | 0.5 | ∞ |
| 14 | Probe Positioning | A | 4.7 | R | $\sqrt{3}$ | 1 | 0.67 | 2.7 | 1.8 | ∞ |
| 15 | Extra. And Interpolation | B | 1.0 | R | $\sqrt{3}$ | 1 | 1 | 0.6 | 0.6 | ∞ |
| Test Sample Related | | | | | | | | | | |
| 16 | Device Positioning Vertical | B | 4.7 | R | $\sqrt{3}$ | 1 | 0.67 | 2.7 | 1.8 | ∞ |
| 17 | Device Positioning Lateral | B | 1.0 | R | $\sqrt{3}$ | 1 | 1 | 0.6 | 0.6 | ∞ |
| 18 | Device Holder and Phantom | B | 2.4 | R | $\sqrt{3}$ | 1 | 1 | 1.4 | 1.4 | ∞ |
| 19 | Power Drift | B | 5.0 | R | $\sqrt{3}$ | 1 | 1 | 2.9 | 2.9 | ∞ |
| Phantom and Setup related | | | | | | | | | | |
| 20s | Phantom Thickness | B | 2.4 | R | $\sqrt{3}$ | 1 | 0.67 | 1.4 | 0.9 | ∞ |
| Combined standard uncertainty(%) | | | | | | | | 14.7 | 10.9 | |
| Expanded uncertainty (confidence interval of 95 %) | | $u_e = 2u_c$ | | N | k=2 | | | 29.4 | 21.8 | |

14 MAIN TEST INSTRUMENTS

Table 2: List of Main Instruments

| No. | Name | Type | Serial Number | Calibration Date | Valid Period |
|-----|---------------|------------|---------------|-------------------|--------------|
| 01 | E-Field Probe | ER3DV6 | 2428 | October 20, 2010 | One year |
| 02 | H-Field Probe | H3DV6 | 6260 | October 20, 2010 | One year |
| 03 | HAC Dipole | CD835V3 | 1023 | October 21, 2009 | Two years |
| 04 | HAC Dipole | CD1880V3 | 1018 | October 21, 2009 | Two years |
| 05 | BTS | 8960 | MY48365192 | November 18, 2010 | One year |
| 06 | DAE | SPEAG DAE4 | 777 | July 9, 2010 | One year |

15 CONCLUSION

The HAC measurement indicates that the EUT complies with the HAC limits of the ANSI C63.19-2007. The total M-ratings are **M3** for **GSM 850/1900**.

END OF REPORT BODY

ANNEX A TEST LAYOUT**Picture A1: HAC RF System Layout**

ANNEX B TEST PLOTS

HAC RF E-Field GSM 850 High

Date/Time: 3/24/2011 3:06:27 PM

Electronics: DAE4 Sn777

Medium: Air

Medium parameters used: $\sigma = 0$ mho/m, $\epsilon_r = 1$; $\rho = 1000$ kg/m³

Ambient Temperature: 23.3°C Liquid Temperature: 22.5°C

Communication System: GSM 850; Frequency: 848.8 MHz; Duty Cycle: 1:8.3

Probe: ER3DV6 - SN2428; ConvF(1, 1, 1)

E Scan - ER3DV6 - 2007: 15 mm from Probe Center to the Device/Hearing Aid

Compatibility Test (101x101x1): Measurement grid: dx=5mm, dy=5mm

Maximum value of peak Total field = 154.5 V/m

Probe Modulation Factor = 2.88

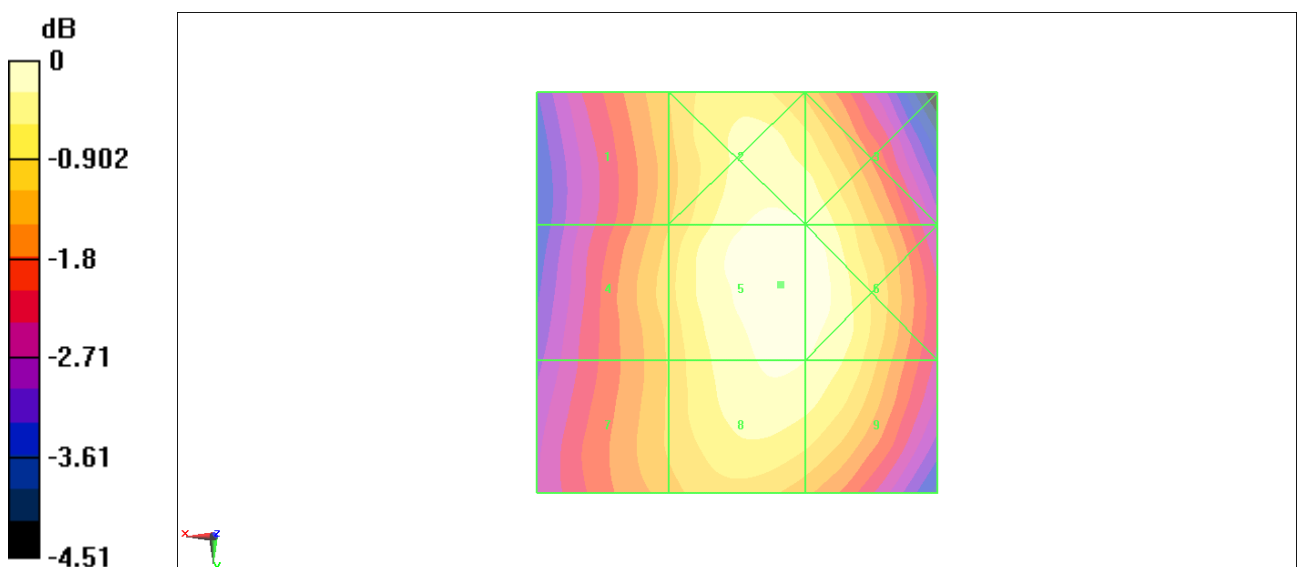
Device Reference Point: 0, 0, -6.3 mm

Reference Value = 68.2 V/m; Power Drift = -0.041 dB

Hearing Aid Near-Field Category: M3 (AWF -5 dB)

Peak E-field in V/m

| | | |
|---------------------------|---------------------------|---------------------------|
| Grid 1 134.6 M4 | Grid 2 150.8 M3 | Grid 3 149.7 M3 |
| Grid 4 137.6 M4 | Grid 5 154.5 M3 | Grid 6 153.6 M3 |
| Grid 7 135.3 M4 | Grid 8 150.3 M3 | Grid 9 149.2 M4 |



0 dB = 154.5V/m

Fig B.1 HAC RF E-Field GSM 850 High

HAC RF E-Field GSM 850 Middle

Date/Time: 3/24/2011 3:11:48 PM

Electronics: DAE4 Sn777

Medium: Air

Medium parameters used: $\sigma = 0$ mho/m, $\epsilon_r = 1$; $\rho = 1000$ kg/m³

Ambient Temperature: 23.3°C Liquid Temperature: 22.5°C

Communication System: GSM 850; Frequency: 836.6 MHz; Duty Cycle: 1:8.3

Probe: ER3DV6 - SN2428; ConvF(1, 1, 1)

E Scan - ER3DV6 - 2007: 15 mm from Probe Center to the Device/Hearing Aid

Compatibility Test (101x101x1): Measurement grid: dx=5mm, dy=5mm

Maximum value of peak Total field = 146.7 V/m

Probe Modulation Factor = 2.88

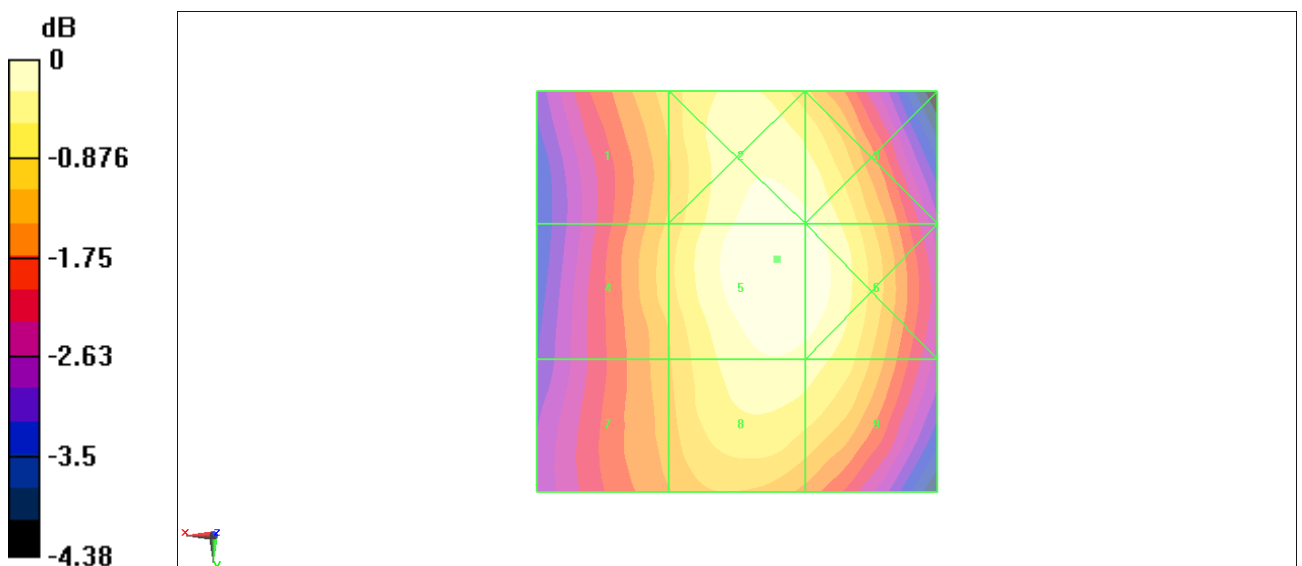
Device Reference Point: 0, 0, -6.3 mm

Reference Value = 64.8 V/m; Power Drift = -0.030 dB

Hearing Aid Near-Field Category: M4 (AWF -5 dB)

Peak E-field in V/m

| | | |
|---------------------------|---------------------------|---------------------------|
| Grid 1 130.6 M4 | Grid 2 144.5 M4 | Grid 3 143.2 M4 |
| Grid 4 131.3 M4 | Grid 5 146.7 M4 | Grid 6 145.5 M4 |
| Grid 7 127.8 M4 | Grid 8 141.6 M4 | Grid 9 140.1 M4 |



0 dB = 146.7V/m

Fig B.2 HAC RF E-Field GSM 850 Middle

HAC RF E-Field GSM 850 Low

Date/Time: 3/24/2011 3:17:13 PM

Electronics: DAE4 Sn777

Medium: Air

Medium parameters used: $\sigma = 0$ mho/m, $\epsilon_r = 1$; $\rho = 1000$ kg/m³

Ambient Temperature: 23.3°C Liquid Temperature: 22.5°C

Communication System: GSM 850; Frequency: 824.2 MHz; Duty Cycle: 1:8.3

Probe: ER3DV6 - SN2428; ConvF(1, 1, 1)

E Scan - ER3DV6 - 2007: 15 mm from Probe Center to the Device/Hearing Aid

Compatibility Test (101x101x1): Measurement grid: dx=5mm, dy=5mm

Maximum value of peak Total field = 151.1 V/m

Probe Modulation Factor = 2.88

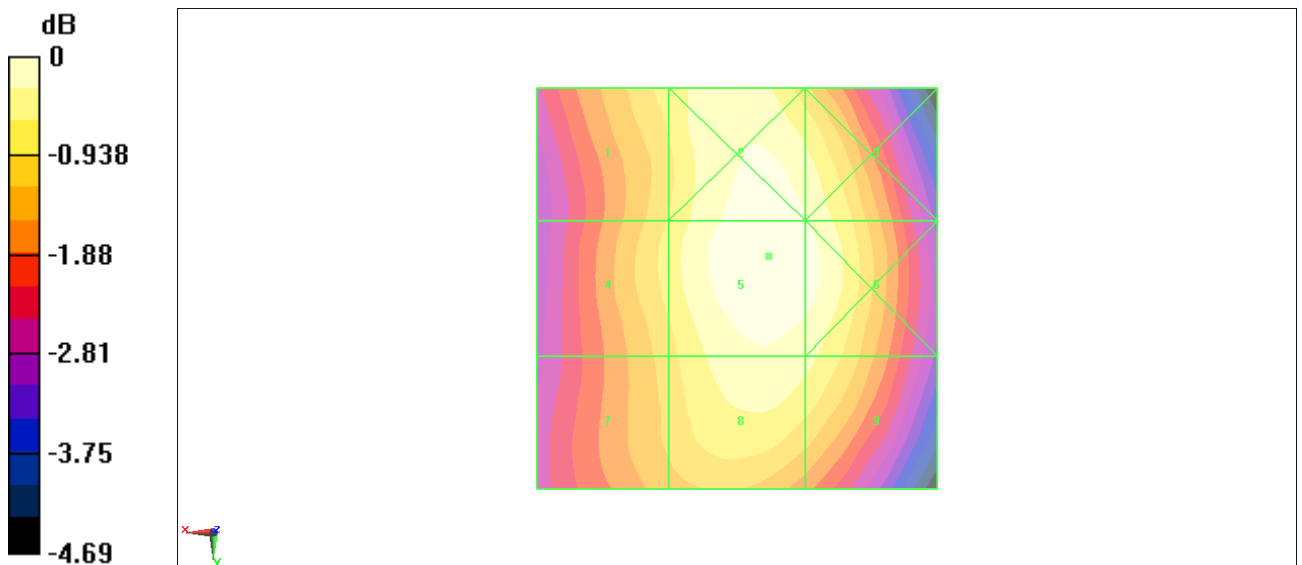
Device Reference Point: 0, 0, -6.3 mm

Reference Value = 66.9 V/m; Power Drift = -0.069 dB

Hearing Aid Near-Field Category: M3 (AWF -5 dB)

Peak E-field in V/m

| | | |
|---------------------------|---------------------------|---------------------------|
| Grid 1 138.2 M4 | Grid 2 149.3 M4 | Grid 3 146.2 M4 |
| Grid 4 138.0 M4 | Grid 5 151.1 M3 | Grid 6 148.3 M4 |
| Grid 7 133.8 M4 | Grid 8 145.2 M4 | Grid 9 142.5 M4 |



0 dB = 151.1V/m

Fig B.3 HAC RF E-Field GSM 850 Low

HAC RF E-Field GSM 1900 High

Date/Time: 3/24/2011 3:24:25 PM

Electronics: DAE4 Sn777

Medium: Air

Medium parameters used: $\sigma = 0$ mho/m, $\epsilon_r = 1$; $\rho = 1000$ kg/m³

Ambient Temperature: 23.3°C Liquid Temperature: 22.5°C

Communication System: DCS 1900; Frequency: 1909.8 MHz; Duty Cycle: 1:8.3

Probe: ER3DV6 - SN2428; ConvF(1, 1, 1)

E Scan - ER3DV6 - 2007: 15 mm from Probe Center to the Device/Hearing Aid

Compatibility Test (101x101x1): Measurement grid: dx=5mm, dy=5mm

Maximum value of peak Total field = 72 V/m

Probe Modulation Factor = 2.88

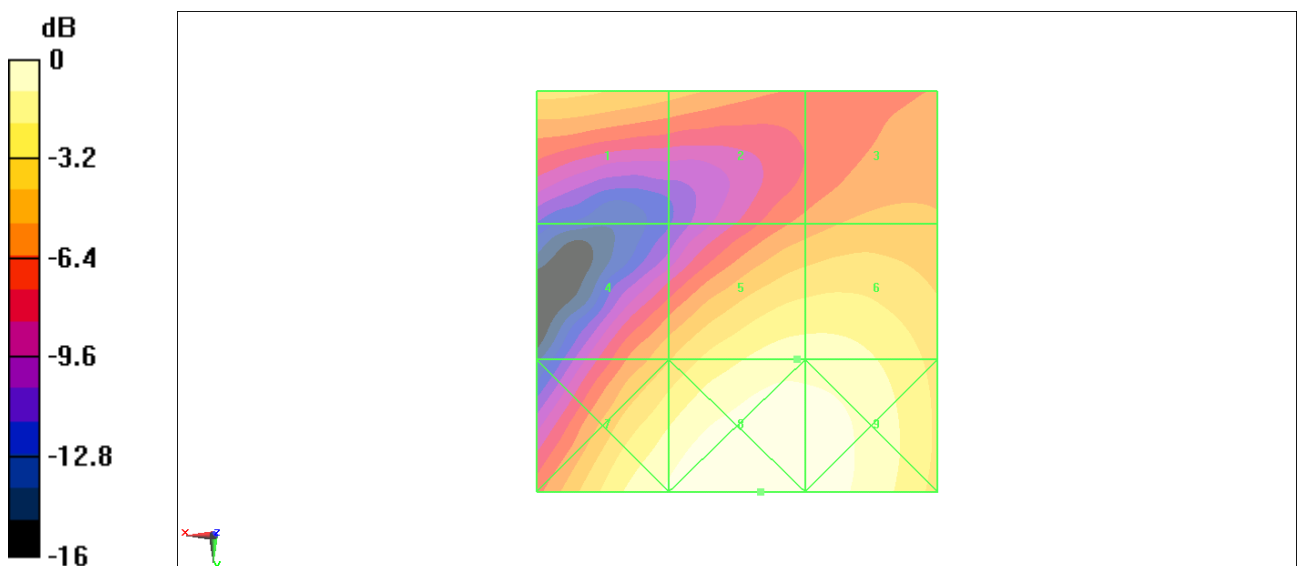
Device Reference Point: 0, 0, -6.3 mm

Reference Value = 21.9 V/m; Power Drift = -0.029 dB

Hearing Aid Near-Field Category: M3 (AWF -5 dB)

Peak E-field in V/m

| | | |
|--------------------------|--------------------------|--------------------------|
| Grid 1 54.9 M3 | Grid 2 49.3 M3 | Grid 3 48.6 M3 |
| Grid 4 52.2 M3 | Grid 5 72 M3 | Grid 6 71.9 M3 |
| Grid 7 77.6 M3 | Grid 8 85.9 M2 | Grid 9 83.1 M3 |



0 dB = 85.9V/m

Fig B.4 HAC RF E-Field GSM 1900 High

HAC RF E-Field GSM 1900 Middle

Date/Time: 3/24/2011 3:29:54 PM

Electronics: DAE4 Sn777

Medium: Air

Medium parameters used: $\sigma = 0$ mho/m, $\epsilon_r = 1$; $\rho = 1000$ kg/m³

Ambient Temperature: 23.3°C Liquid Temperature: 22.5°C

Communication System: DCS 1900; Frequency: 1880 MHz; Duty Cycle: 1:8.3

Probe: ER3DV6 - SN2428; ConvF(1, 1, 1)

E Scan - ER3DV6 - 2007: 15 mm from Probe Center to the Device/Hearing Aid

Compatibility Test (101x101x1): Measurement grid: dx=5mm, dy=5mm

Maximum value of peak Total field = 74.5 V/m

Probe Modulation Factor = 2.88

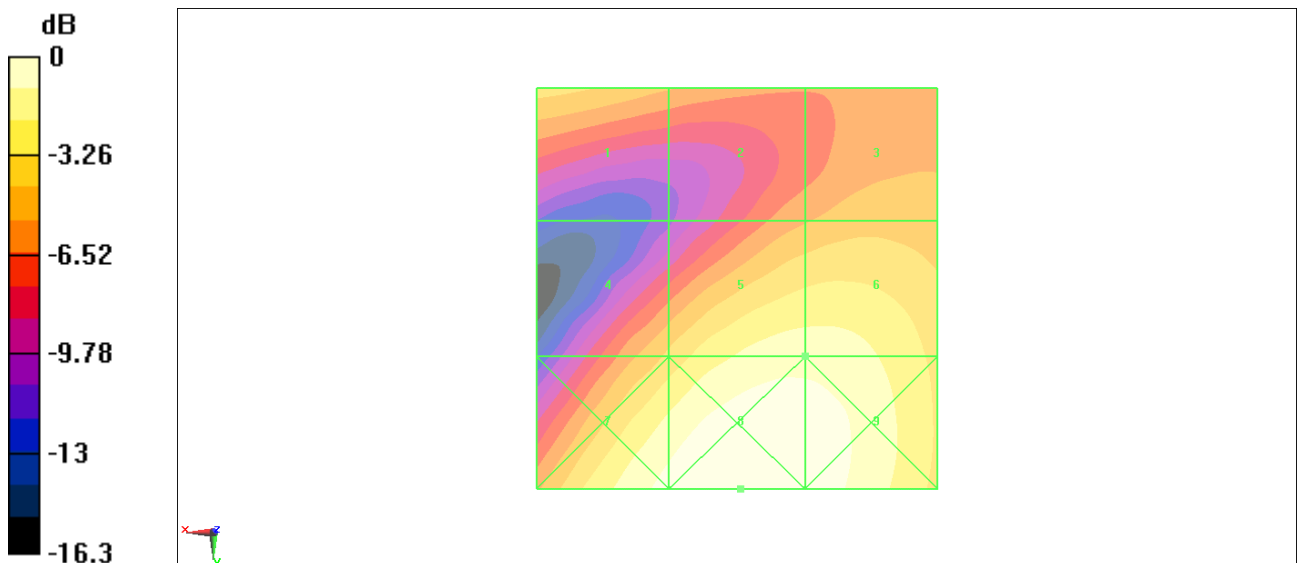
Device Reference Point: 0, 0, -6.3 mm

Reference Value = 23.4 V/m; Power Drift = -0.026 dB

Hearing Aid Near-Field Category: M3 (AWF -5 dB)

Peak E-field in V/m

| | | |
|--------------------------|--------------------------|--------------------------|
| Grid 1 56.3 M3 | Grid 2 47.9 M3 | Grid 3 51.5 M3 |
| Grid 4 55.6 M3 | Grid 5 74.5 M3 | Grid 6 74.5 M3 |
| Grid 7 81.5 M3 | Grid 8 88.4 M2 | Grid 9 84.4 M2 |



0 dB = 88.4V/m

Fig B.5 HAC RF E-Field GSM 1900 Middle

HAC RF E-Field GSM 1900 Low

Date/Time: 3/24/2011 3:35:20 PM

Electronics: DAE4 Sn777

Medium: Air

Medium parameters used: $\sigma = 0$ mho/m, $\epsilon_r = 1$; $\rho = 1000$ kg/m³

Ambient Temperature: 23.3°C Liquid Temperature: 22.5°C

Communication System: DCS 1900; Frequency: 1850.2 MHz; Duty Cycle: 1:8.3

Probe: ER3DV6 - SN2428; ConvF(1, 1, 1)

E Scan - ER3DV6 - 2007: 15 mm from Probe Center to the Device/Hearing Aid

Compatibility Test (101x101x1): Measurement grid: dx=5mm, dy=5mm

Maximum value of peak Total field = 78.3 V/m

Probe Modulation Factor = 2.88

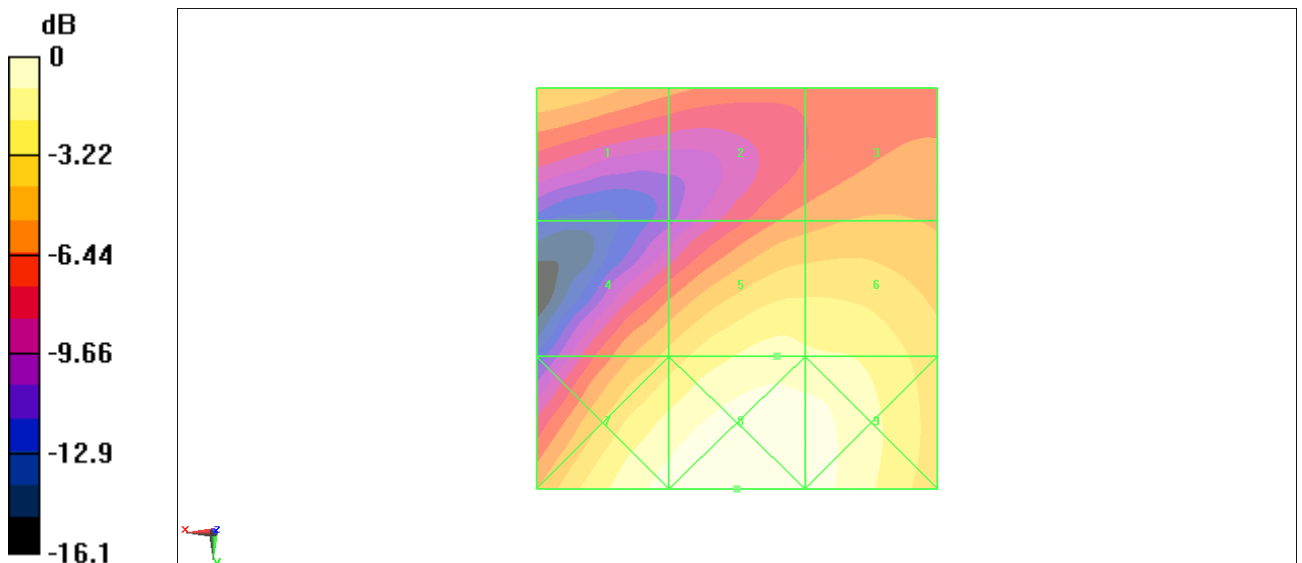
Device Reference Point: 0, 0, -6.3 mm

Reference Value = 24.7 V/m; Power Drift = 0.00618 dB

Hearing Aid Near-Field Category: M3 (AWF -5 dB)

Peak E-field in V/m

| | | |
|--------------------------|--------------------------|--------------------------|
| Grid 1 58.1 M3 | Grid 2 48.1 M3 | Grid 3 51.9 M3 |
| Grid 4 60.4 M3 | Grid 5 78.3 M3 | Grid 6 76.1 M3 |
| Grid 7 87.9 M2 | Grid 8 94.7 M2 | Grid 9 89.8 M2 |



0 dB = 94.7V/m

Fig B.6 HAC RF E-Field GSM 1900 Low

HAC RF H-Field GSM 850 High

Date/Time: 3/24/2011 9:01:08 AM

Electronics: DAE4 Sn777

Medium: Air

Medium parameters used: $\sigma = 0$ mho/m, $\epsilon_r = 1$; $\rho = 1$ kg/m³

Ambient Temperature: 23.3°C Liquid Temperature: 22.5°C

Communication System: GSM 850; Frequency: 848.8 MHz; Duty Cycle: 1:8.3

Probe: H3DV6 - SN6260;

H Scan - H3DV6 - 2007: 15 mm from Probe Center to the Device/Hearing Aid

Compatibility Test (101x101x1): Measurement grid: dx=5mm, dy=5mm

Maximum value of peak Total field = 0.283 A/m

Probe Modulation Factor = 2.88

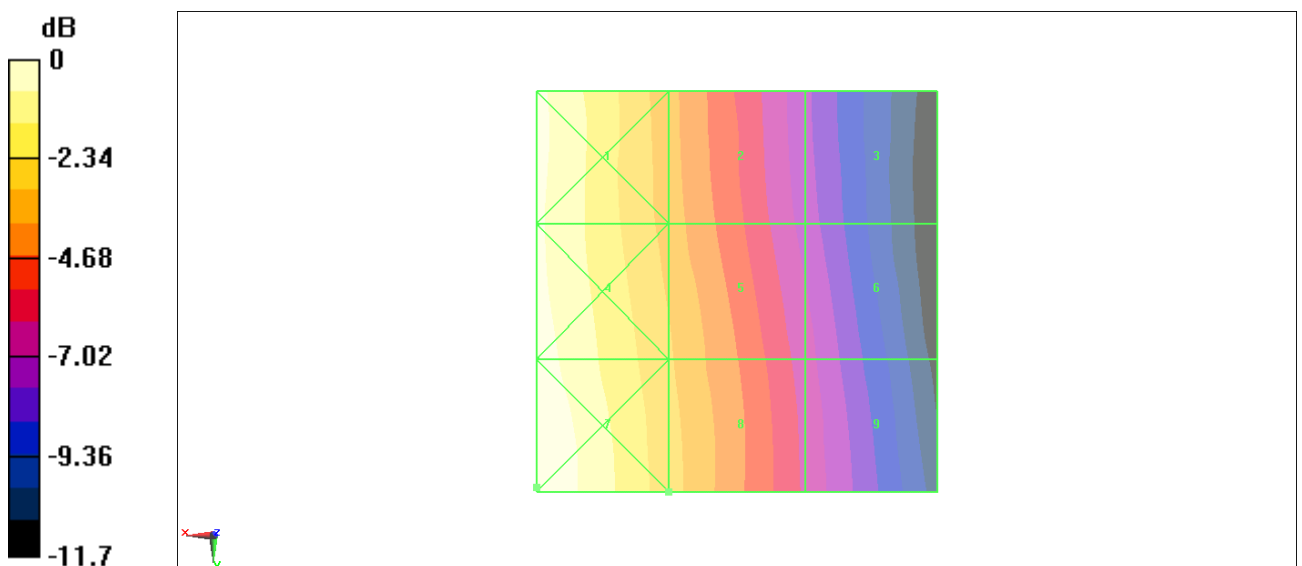
Device Reference Point: 0, 0, -6.3 mm

Reference Value = 0.081 A/m; Power Drift = 0.102 dB

Hearing Aid Near-Field Category: M4 (AWF -5 dB)

Peak H-field in A/m

| | | |
|---------------------------|---------------------------|---------------------------|
| Grid 1 0.367 M4 | Grid 2 0.262 M4 | Grid 3 0.168 M4 |
| Grid 4 0.373 M4 | Grid 5 0.276 M4 | Grid 6 0.182 M4 |
| Grid 7 0.390 M4 | Grid 8 0.283 M4 | Grid 9 0.188 M4 |



0 dB = 0.390A/m

Fig B.7 HAC RF H-Field GSM 850 High

HAC RF H-Field GSM 850 Middle

Date/Time: 3/24/2011 9:07:26 AM

Electronics: DAE4 Sn777

Medium: Air

Medium parameters used: $\sigma = 0$ mho/m, $\epsilon_r = 1$; $\rho = 1$ kg/m³

Ambient Temperature: 23.3°C Liquid Temperature: 22.5°C

Communication System: GSM 850; Frequency: 836.6 MHz; Duty Cycle: 1:8.3

Probe: H3DV6 - SN6260;

H Scan - H3DV6 - 2007: 15 mm from Probe Center to the Device/Hearing Aid

Compatibility Test (101x101x1): Measurement grid: dx=5mm, dy=5mm

Maximum value of peak Total field = 0.271 A/m

Probe Modulation Factor = 2.88

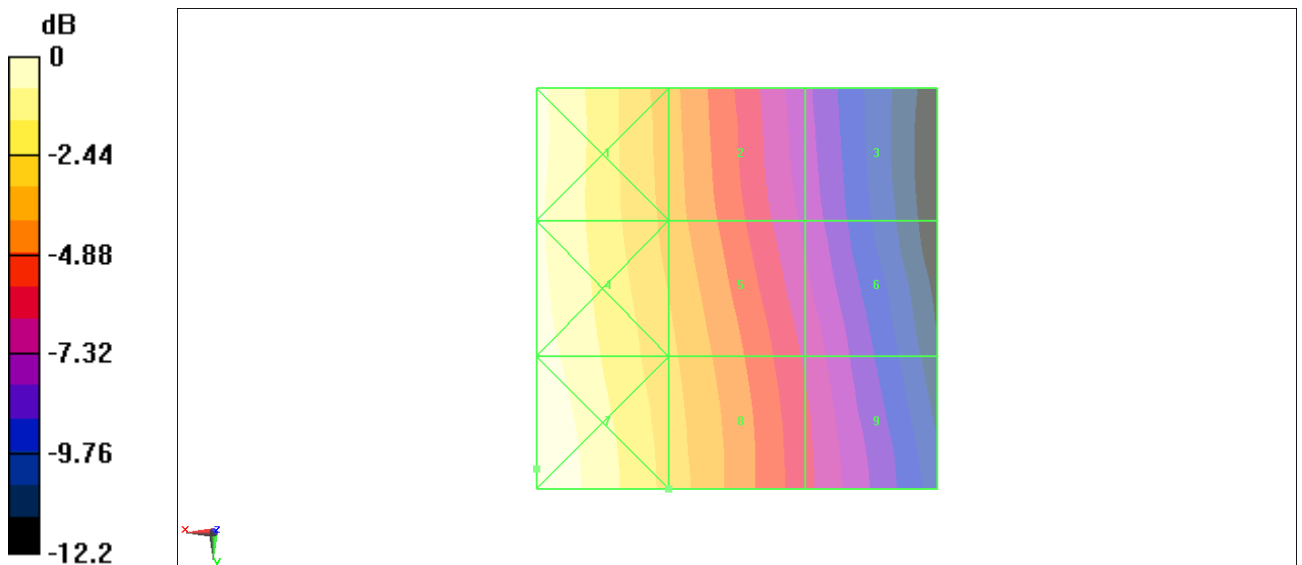
Device Reference Point: 0, 0, -6.3 mm

Reference Value = 0.076 A/m; Power Drift = -0.016 dB

Hearing Aid Near-Field Category: M4 (AWF -5 dB)

Peak H-field in A/m

| | | |
|---------------------------|---------------------------|---------------------------|
| Grid 1 0.346 M4 | Grid 2 0.246 M4 | Grid 3 0.156 M4 |
| Grid 4 0.354 M4 | Grid 5 0.261 M4 | Grid 6 0.173 M4 |
| Grid 7 0.370 M4 | Grid 8 0.271 M4 | Grid 9 0.181 M4 |



0 dB = 0.370A/m

Fig B.8 HAC RF H-Field GSM 850 Middle

HAC RF H-Field GSM 850 Low

Date/Time: 3/24/2011 9:13:20 AM

Electronics: DAE4 Sn777

Medium: Air

Medium parameters used: $\sigma = 0$ mho/m, $\epsilon_r = 1$; $\rho = 1$ kg/m³

Ambient Temperature: 23.3°C Liquid Temperature: 22.5°C

Communication System: GSM 850; Frequency: 824.2 MHz; Duty Cycle: 1:8.3

Probe: H3DV6 - SN6260;

H Scan - H3DV6 - 2007: 15 mm from Probe Center to the Device/Hearing Aid

Compatibility Test (101x101x1): Measurement grid: dx=5mm, dy=5mm

Maximum value of peak Total field = 0.244 A/m

Probe Modulation Factor = 2.88

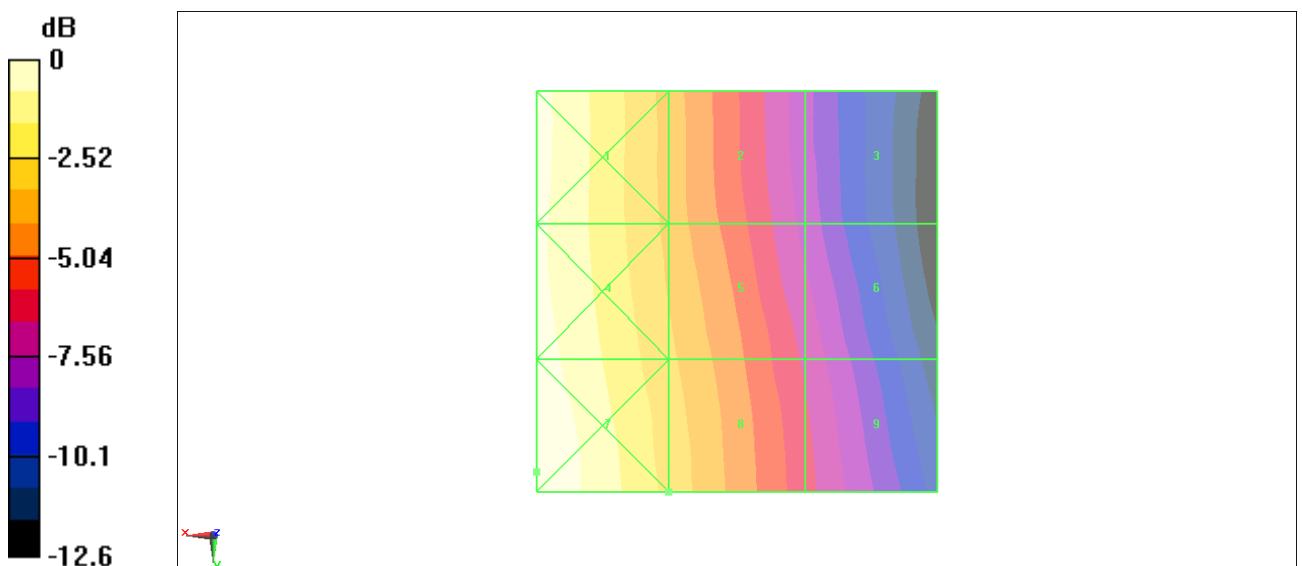
Device Reference Point: 0, 0, -6.3 mm

Reference Value = 0.067 A/m; Power Drift = -0.00775 dB

Hearing Aid Near-Field Category: M4 (AWF -5 dB)

Peak H-field in A/m

| | | |
|---------------------------|---------------------------|---------------------------|
| Grid 1 0.316 M4 | Grid 2 0.221 M4 | Grid 3 0.136 M4 |
| Grid 4 0.320 M4 | Grid 5 0.233 M4 | Grid 6 0.152 M4 |
| Grid 7 0.335 M4 | Grid 8 0.244 M4 | Grid 9 0.161 M4 |



0 dB = 0.335A/m

Fig B.9 HAC RF H-Field GSM 850 Low

HAC RF H-Field GSM 1900 High

Date/Time: 3/24/2011 9:21:30 AM

Electronics: DAE4 Sn777

Medium: Air

Medium parameters used: $\sigma = 0$ mho/m, $\epsilon_r = 1$; $\rho = 1$ kg/m³

Ambient Temperature: 23.3°C Liquid Temperature: 22.5°C

Communication System: DCS 1900; Frequency: 1909.8 MHz; Duty Cycle: 1:8.3

Probe: H3DV6 - SN6260;

H Scan - H3DV6 - 2007: 15 mm from Probe Center to the Device/Hearing Aid

Compatibility Test (101x101x1): Measurement grid: dx=5mm, dy=5mm

Maximum value of peak Total field = 0.221 A/m

Probe Modulation Factor = 2.88

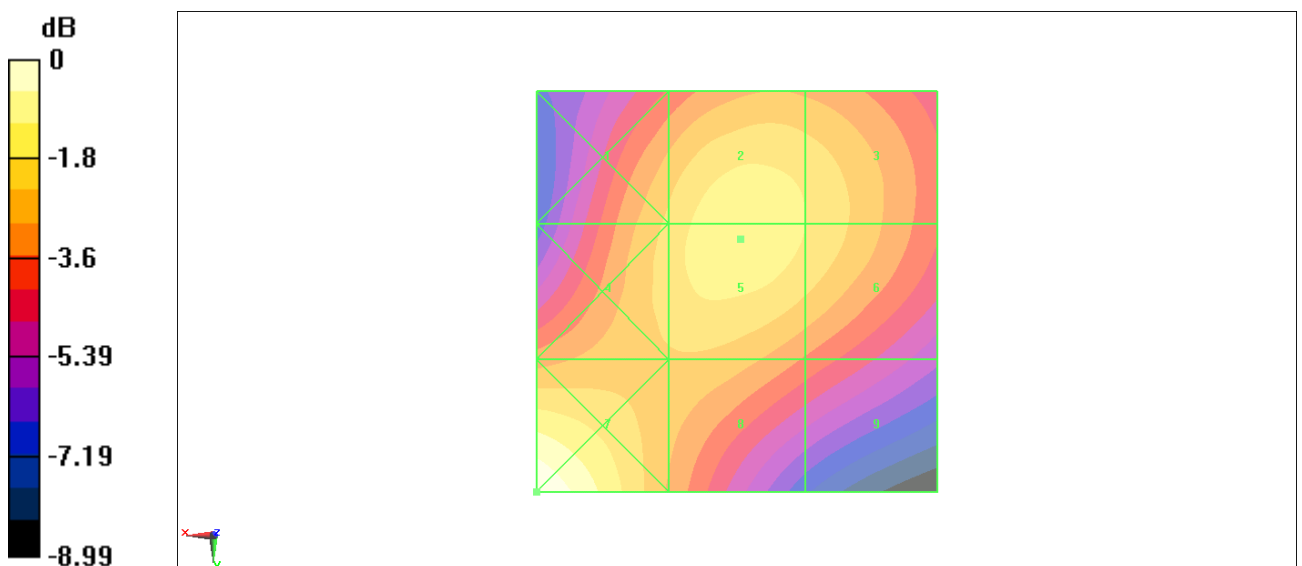
Device Reference Point: 0, 0, -6.3 mm

Reference Value = 0.089 A/m; Power Drift = -0.016 dB

Hearing Aid Near-Field Category: M3 (AWF -5 dB)

Peak H-field in A/m

| | | |
|---------------------------|---------------------------|---------------------------|
| Grid 1 0.200 M3 | Grid 2 0.221 M3 | Grid 3 0.211 M3 |
| Grid 4 0.204 M3 | Grid 5 0.221 M3 | Grid 6 0.211 M3 |
| Grid 7 0.259 M2 | Grid 8 0.195 M3 | Grid 9 0.170 M3 |



0 dB = 0.259A/m

Fig B.10 HAC RF H-Field GSM 1900 High

HAC RF H-Field GSM 1900 Middle

Date/Time: 3/24/2011 9:27:37 AM

Electronics: DAE4 Sn777

Medium: Air

Medium parameters used: $\sigma = 0$ mho/m, $\epsilon_r = 1$; $\rho = 1$ kg/m³

Ambient Temperature: 23.3°C Liquid Temperature: 22.5°C

Communication System: DCS 1900; Frequency: 1880 MHz; Duty Cycle: 1:8.3

Probe: H3DV6 - SN6260;

H Scan - H3DV6 - 2007: 15 mm from Probe Center to the Device/Hearing Aid

Compatibility Test (101x101x1): Measurement grid: dx=5mm, dy=5mm

Maximum value of peak Total field = 0.231 A/m

Probe Modulation Factor = 2.88

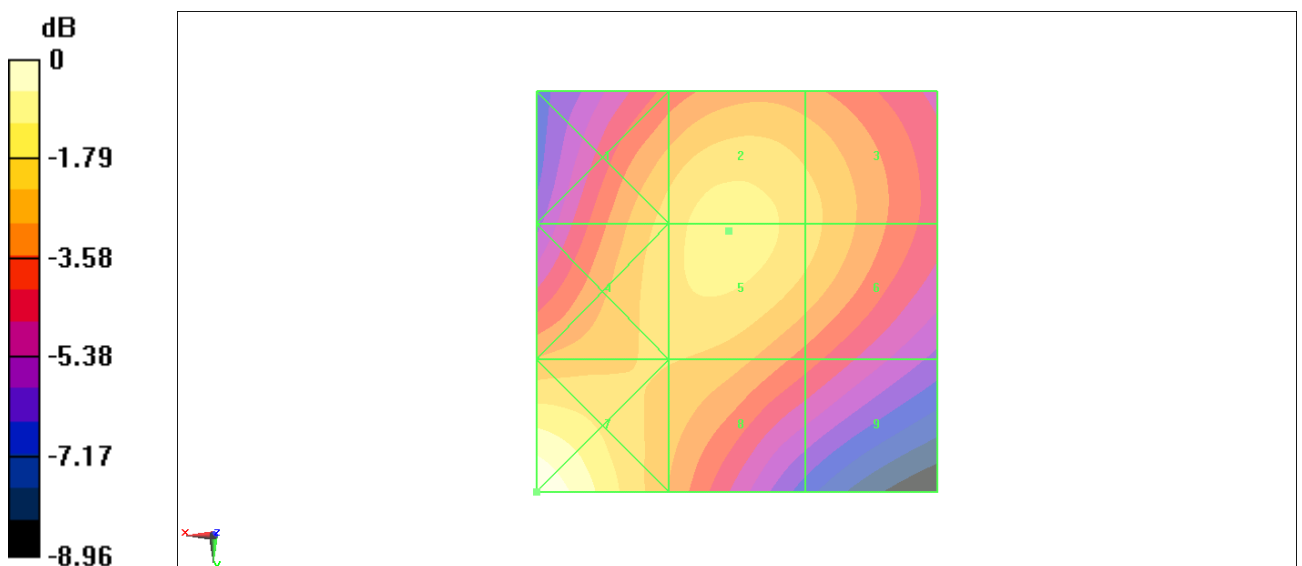
Device Reference Point: 0, 0, -6.3 mm

Reference Value = 0.092 A/m; Power Drift = -0.00817 dB

Hearing Aid Near-Field Category: M3 (AWF -5 dB)

Peak H-field in A/m

| | | |
|---------------------------|---------------------------|---------------------------|
| Grid 1 0.216 M3 | Grid 2 0.231 M3 | Grid 3 0.215 M3 |
| Grid 4 0.219 M3 | Grid 5 0.231 M3 | Grid 6 0.215 M3 |
| Grid 7 0.275 M2 | Grid 8 0.210 M3 | Grid 9 0.176 M3 |



0 dB = 0.275A/m

Fig B.11 HAC RF H-Field GSM 1900 Middle

HAC RF H-Field GSM 1900 Low

Date/Time: 3/24/2011 9:33:01 AM

Electronics: DAE4 Sn777

Medium: Air

Medium parameters used: $\sigma = 0$ mho/m, $\epsilon_r = 1$; $\rho = 1$ kg/m³

Ambient Temperature: 23.3°C Liquid Temperature: 22.5°C

Communication System: DCS 1900; Frequency: 1850.2 MHz; Duty Cycle: 1:8.3

Probe: H3DV6 - SN6260;

H Scan - H3DV6 - 2007: 15 mm from Probe Center to the Device/Hearing Aid

Compatibility Test (101x101x1): Measurement grid: dx=5mm, dy=5mm

Maximum value of peak Total field = 0.239 A/m

Probe Modulation Factor = 2.88

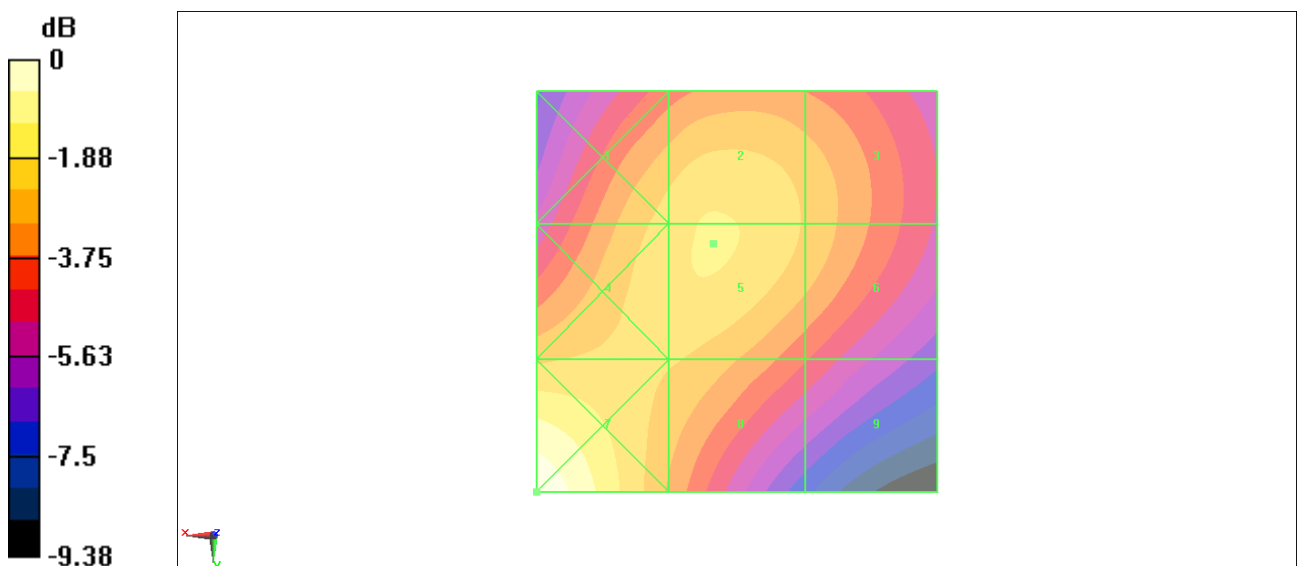
Device Reference Point: 0, 0, -6.3 mm

Reference Value = 0.094 A/m; Power Drift = -0.035 dB

Hearing Aid Near-Field Category: M3 (AWF -5 dB)

Peak H-field in A/m

| | | |
|---------------------------|---------------------------|---------------------------|
| Grid 1 0.228 M3 | Grid 2 0.238 M3 | Grid 3 0.219 M3 |
| Grid 4 0.232 M3 | Grid 5 0.239 M3 | Grid 6 0.219 M3 |
| Grid 7 0.294 M2 | Grid 8 0.222 M3 | Grid 9 0.179 M3 |



0 dB = 0.294A/m

Fig B.12 HAC RF H-Field GSM 1900 Low

Total M-rating of GSM 850 MHz Band

Date/Time: 3/24/2011 3:06:27 PM, Date/Time: 3/24/2011 9:01:08 AM

Electronics: DAE4 Sn777

Medium: Air

Medium parameters used: $\sigma = 0$ mho/m, $\epsilon_r = 1$; $\rho = 1000$ kg/m³ Medium parameters used: $\sigma = 0$ mho/m, $\epsilon_r = 1$; $\rho = 1$ kg/m³

Ambient Temperature:23.3°C Liquid Temperature: 22.5°C

Communication System: GSM 850; Frequency: 848.8 MHz; Duty Cycle: 1:8.3

Probe: ER3DV6 - SN2428Probe: H3DV6 - SN6260;ConvF(1, 1, 1)

E Scan - ER3DV6 - 2007: 15 mm from Probe Center to the Device/Hearing Aid Compatibility Test (101x101x1): Measurement grid: dx=5mm, dy=5mm

Maximum value of peak Total field = 154.5 V/m

Probe Modulation Factor = 2.88

Device Reference Point: 0, 0, -6.3 mm

Reference Value = 68.2 V/m; Power Drift = -0.041 dB

Hearing Aid Near-Field Category: M3 (AWF -5 dB)

Peak E-field in V/m

| | | |
|---------------------------|---------------------------|---------------------------|
| Grid 1 134.6 M4 | Grid 2 150.8 M3 | Grid 3 149.7 M3 |
| Grid 4 137.6 M4 | Grid 5 154.5 M3 | Grid 6 153.6 M3 |
| Grid 7 135.3 M4 | Grid 8 150.3 M3 | Grid 9 149.2 M4 |

H Scan - H3DV6 - 2007: 15 mm from Probe Center to the Device/Hearing Aid Compatibility Test (101x101x1): Measurement grid: dx=5mm, dy=5mm

Maximum value of peak Total field = 0.283 A/m

Probe Modulation Factor = 2.88

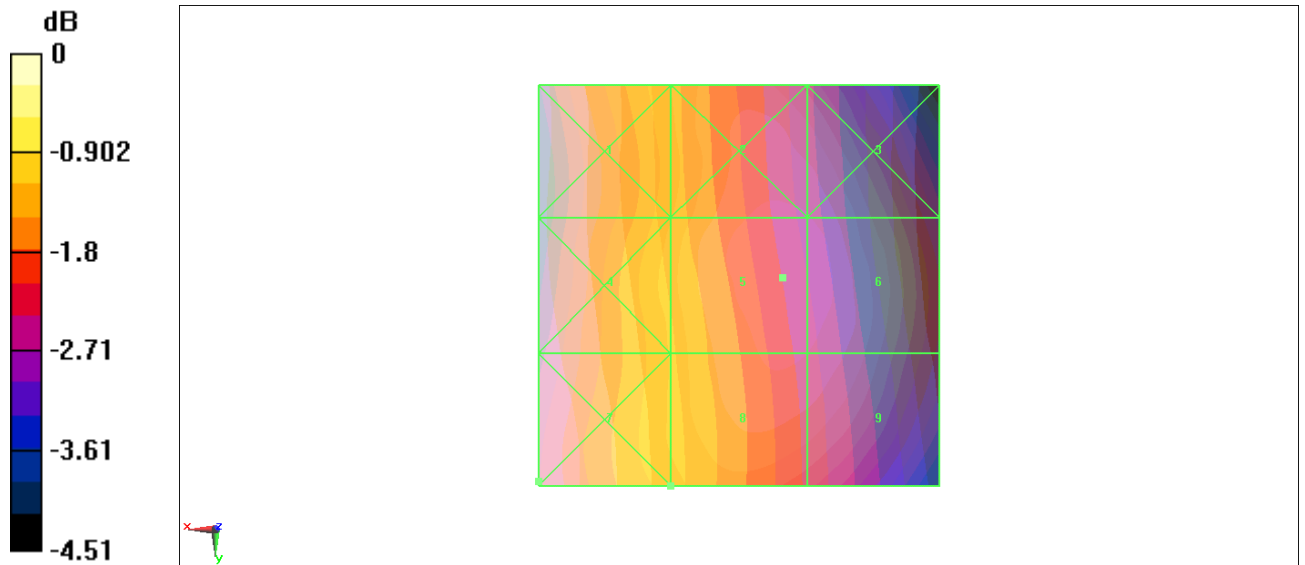
Device Reference Point: 0, 0, -6.3 mm

Reference Value = 0.081 A/m; Power Drift = 0.102 dB

Hearing Aid Near-Field Category: M4 (AWF -5 dB)

Peak H-field in A/m

| | | |
|---------------------------|---------------------------|---------------------------|
| Grid 1 0.367 M4 | Grid 2 0.262 M4 | Grid 3 0.168 M4 |
| Grid 4 0.373 M4 | Grid 5 0.276 M4 | Grid 6 0.182 M4 |
| Grid 7 0.390 M4 | Grid 8 0.283 M4 | Grid 9 0.188 M4 |



0 dB = 154.5V/m

| | | |
|-------------------------|-----------------------|-----------------------|
| RF RESULTS AND M-RATING | E-Field M Rating | M3 (AWF -5 dB) |
| | H-Field M Rating | M4 (AWF -5 dB) |
| | Total M Rating | M3 |

Fig B.13 Total M-rating of GSM 850

Total M-rating of GSM 1900 MHz Band

Date/Time: 3/24/2011 3:35:20 PM, Date/Time: 3/24/2011 9:33:01 AM

Electronics: DAE4 Sn777

Medium: Air

Medium parameters used: $\sigma = 0$ mho/m, $\epsilon_r = 1$; $\rho = 1000$ kg/m³ Medium parameters used: $\sigma = 0$ mho/m, $\epsilon_r = 1$; $\rho = 1$ kg/m³

Ambient Temperature:23.3°C Liquid Temperature: 22.5°C

Communication System: PCS 1900; Frequency: 1850.2 MHz; Duty Cycle: 1:8.3

Probe: ER3DV6 - SN2428Probe: H3DV6 - SN6260;ConvF(1, 1, 1)

E Scan - ER3DV6 - 2007: 15 mm from Probe Center to the Device/Hearing Aid Compatibility Test (101x101x1): Measurement grid: dx=5mm, dy=5mm

Maximum value of peak Total field = 78.3 V/m

Probe Modulation Factor = 2.88

Device Reference Point: 0, 0, -6.3 mm

Reference Value = 24.7 V/m; Power Drift = 0.00618 dB

Hearing Aid Near-Field Category: M3 (AWF -5 dB)

Peak E-field in V/m

| | | |
|----------------|----------------|----------------|
| Grid 1 | Grid 2 | Grid 3 |
| 58.1 M3 | 48.1 M3 | 51.9 M3 |
| Grid 4 | Grid 5 | Grid 6 |
| 60.4 M3 | 78.3 M3 | 76.1 M3 |
| Grid 7 | Grid 8 | Grid 9 |
| 87.9 M2 | 94.7 M2 | 89.8 M2 |

H Scan - H3DV6 - 2007: 15 mm from Probe Center to the Device/Hearing Aid Compatibility Test (101x101x1): Measurement grid: dx=5mm, dy=5mm

Maximum value of peak Total field = 0.239 A/m

Probe Modulation Factor = 2.88

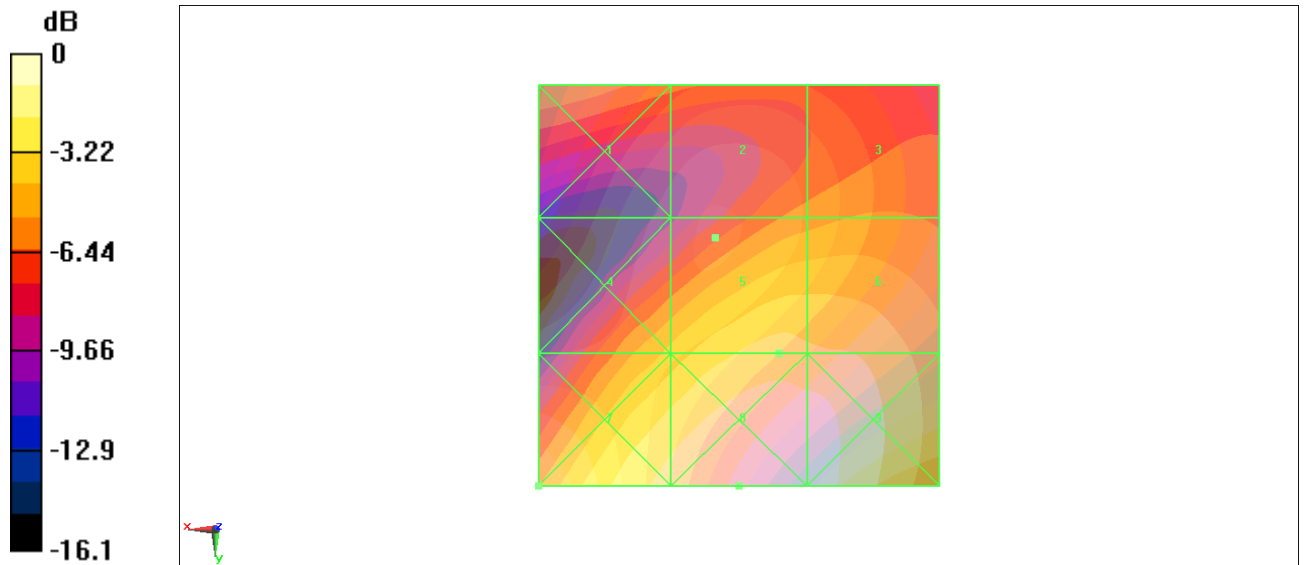
Device Reference Point: 0, 0, -6.3 mm

Reference Value = 0.094 A/m; Power Drift = -0.035 dB

Hearing Aid Near-Field Category: M3 (AWF -5 dB)

Peak H-field in A/m

| | | |
|-----------------|-----------------|-----------------|
| Grid 1 | Grid 2 | Grid 3 |
| 0.228 M3 | 0.238 M3 | 0.219 M3 |
| Grid 4 | Grid 5 | Grid 6 |
| 0.232 M3 | 0.239 M3 | 0.219 M3 |
| Grid 7 | Grid 8 | Grid 9 |
| 0.294 M2 | 0.222 M3 | 0.179 M3 |



0 dB = 94.7V/m

| | | |
|-------------------------|-----------------------|-----------------------|
| RF RESULTS AND M-RATING | E-Field M Rating | M3 (AWF -5 dB) |
| | H-Field M Rating | M3 (AWF -5 dB) |
| | Total M Rating | M3 |

Fig B.14 Total M-rating of GSM 1900

ANNEX C SYSTEM VALIDATION RESULT

E SCAN of Dipole 835 MHz

Date/Time: 3/24/2011 7:39:20 AM

Electronics: DAE4 Sn777

Medium: Air

Medium parameters used: $\sigma = 0$ mho/m, $\epsilon_r = 1$; $\rho = 1000$ kg/m³

Communication System: CW; Frequency: 835 MHz; Duty Cycle: 1:1

Probe: ER3DV6 - SN2428;ConvF(1, 1, 1)

E Scan - measurement distance from the probe sensor center to CD835 Dipole = 10mm/Hearing Aid Compatibility Test (41x361x1): Measurement grid: dx=5mm, dy=5mm

Maximum value of peak Total field = 170.5 V/m

Probe Modulation Factor = 1

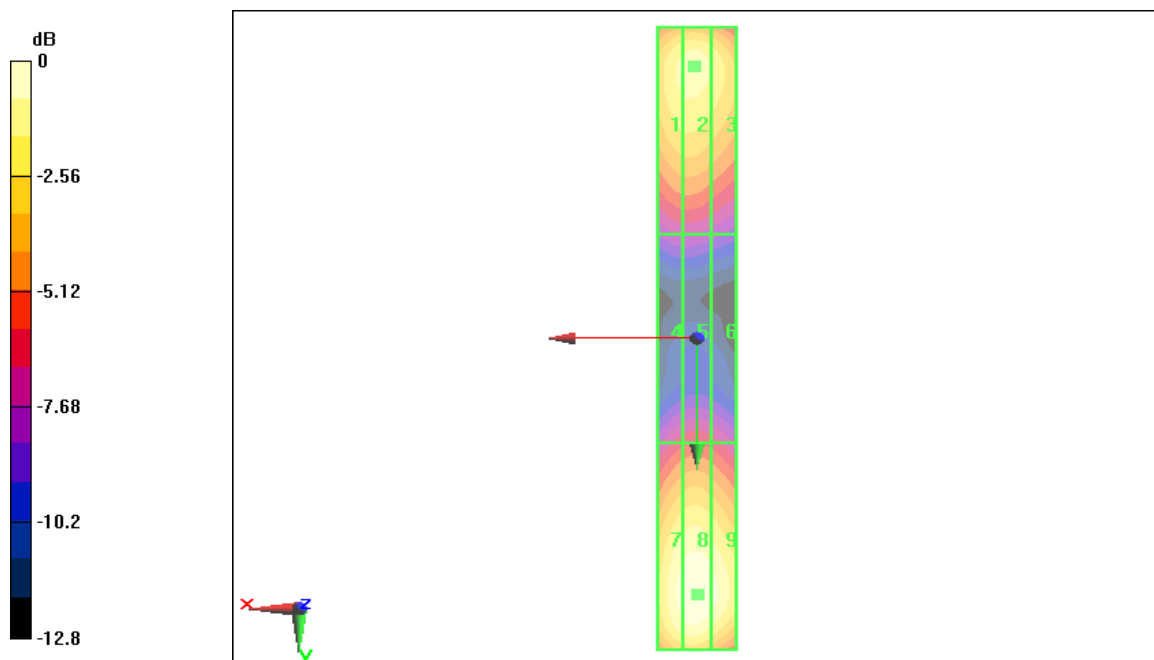
Device Reference Point: 0, 0, -6.3 mm

Reference Value = 120.9 V/m; Power Drift = -0.064 dB

Hearing Aid Near-Field Category: M4 (AWF 0 dB)

Peak E-field in V/m

| | | |
|-----------------|-----------------|-----------------|
| Grid 1 | Grid 2 | Grid 3 |
| 145.2 M4 | 147.7 M4 | 140.0 M4 |
| Grid 4 | Grid 5 | Grid 6 |
| 82.0 M4 | 84.4 M4 | 81.1 M4 |
| Grid 7 | Grid 8 | Grid 9 |
| 162.1 M4 | 170.5 M4 | 162.3 M4 |



0 dB = 170.5V/m

H SCAN of Dipole 835 MHz

Date/Time: 3/24/2011 7:58:19 AM

Electronics: DAE4 Sn777

Medium: Air

Medium parameters used: $\sigma = 0$ mho/m, $\epsilon_r = 1$; $\rho = 1$ kg/m³

Communication System: CW; Frequency: 835 MHz; Duty Cycle: 1:1

Probe: H3DV6 - SN6260;

H Scan - measurement distance from the probe sensor center to CD835 Dipole = 10mm/Hearing Aid Compatibility Test (41x361x1): Measurement grid: dx=5mm, dy=5mm

Maximum value of peak Total field = 0.442 A/m

Probe Modulation Factor = 1

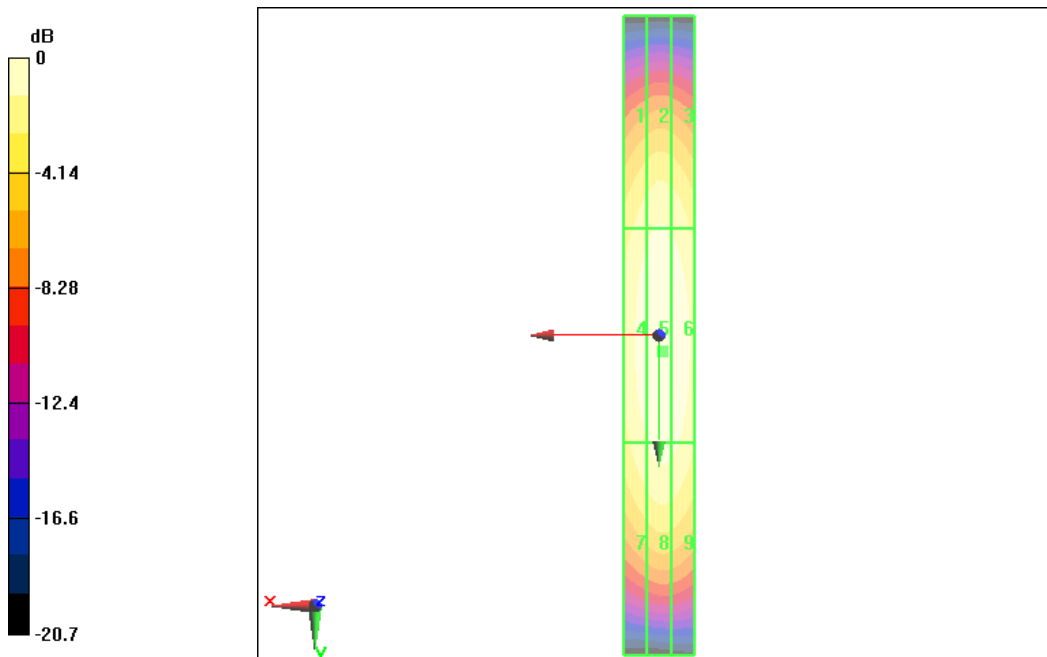
Device Reference Point: 0, 0, -6.3 mm

Reference Value = 0.462 A/m; Power Drift = 0.089 dB

Hearing Aid Near-Field Category: M4 (AWF 0 dB)

Peak H-field in A/m

| | | |
|-----------------|-----------------|-----------------|
| Grid 1 | Grid 2 | Grid 3 |
| 0.358 M4 | 0.382 M4 | 0.367 M4 |
| Grid 4 | Grid 5 | Grid 6 |
| 0.417 M4 | 0.442 M4 | 0.429 M4 |
| Grid 7 | Grid 8 | Grid 9 |
| 0.367 M4 | 0.398 M4 | 0.386 M4 |



0 dB = 0.442A/m

E SCAN of Dipole 1880 MHz

Date/Time: 3/24/2011 8:21:37 AM

Electronics: DAE4 Sn777

Medium: Air

Medium parameters used: $\sigma = 0$ mho/m, $\epsilon_r = 1$; $\rho = 1000$ kg/m³

Communication System: CW; Frequency: 1900 MHz; Duty Cycle: 1:1

Probe: ER3DV6 - SN2428;ConvF(1, 1, 1)

E Scan - measurement distance from the probe sensor center to CD1880 Dipole = 10mm/Hearing Aid Compatibility Test (41x181x1): Measurement grid: dx=5mm, dy=5mm

Maximum value of peak Total field = 133.6 V/m

Probe Modulation Factor = 1

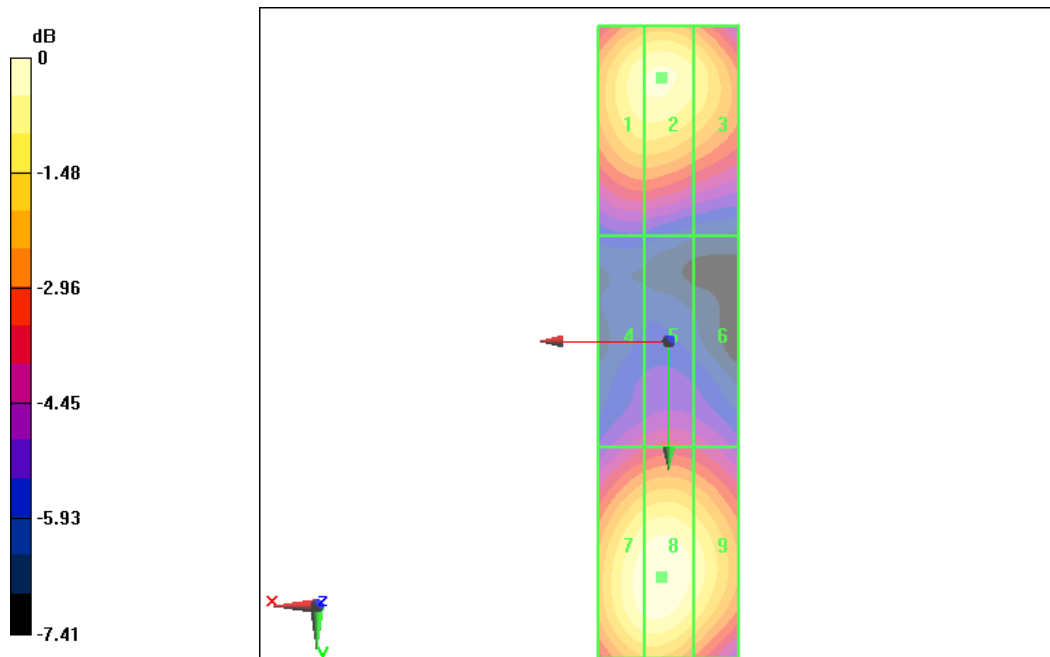
Device Reference Point: 0, 0, -6.3 mm

Reference Value = 139.4 V/m; Power Drift = 0.048 dB

Hearing Aid Near-Field Category: M2 (AWF 0 dB)

Peak E-field in V/m

| | | |
|-----------------|-----------------|-----------------|
| Grid 1 | Grid 2 | Grid 3 |
| 125.8 M2 | 127.9 M2 | 120.1 M2 |
| Grid 4 | Grid 5 | Grid 6 |
| 83.9 M3 | 86.9 M3 | 84.4 M3 |
| Grid 7 | Grid 8 | Grid 9 |
| 130.9 M2 | 133.6 M2 | 125.1 M2 |



0 dB = 133.6V/m

H SCAN of Dipole 1880 MHz

Date/Time: 3/24/2011 8:45:22 AM

Electronics: DAE4 Sn777

Medium: Air

Medium parameters used: $\sigma = 0$ mho/m, $\epsilon_r = 1$; $\rho = 1$ kg/m³

Communication System: CW; Frequency: 1900 MHz; Duty Cycle: 1:1

Probe: H3DV6 - SN6260;

H Scan - measurement distance from the probe sensor center to CD1880 Dipole = 10mm/Hearing Aid Compatibility Test (41x181x1): Measurement grid: dx=5mm, dy=5mm

Maximum value of peak Total field = 0.450 A/m

Probe Modulation Factor = 1

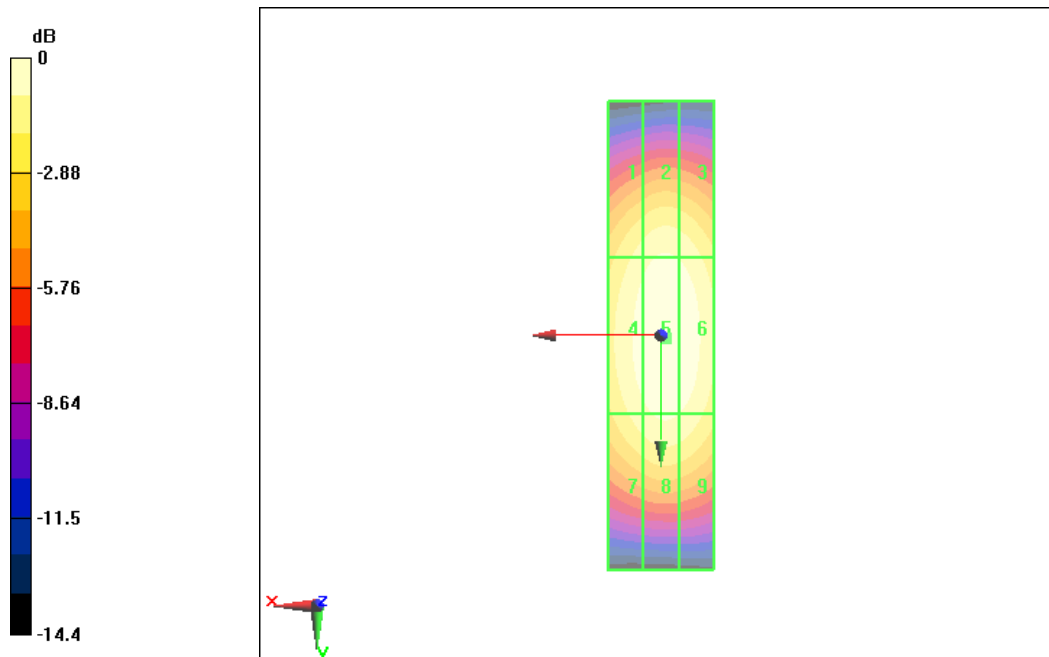
Device Reference Point: 0, 0, -6.3 mm

Reference Value = 0.462 A/m; Power Drift = -0.097 dB

Hearing Aid Near-Field Category: M2 (AWF 0 dB)

Peak H-field in A/m

| | | |
|-----------------|-----------------|-----------------|
| Grid 1 | Grid 2 | Grid 3 |
| 0.380 M2 | 0.399 M2 | 0.396 M2 |
| Grid 4 | Grid 5 | Grid 6 |
| 0.417 M2 | 0.450 M2 | 0.429 M2 |
| Grid 7 | Grid 8 | Grid 9 |
| 0.380 M2 | 0.406 M2 | 0.398 M2 |



0 dB = 0.450A/m

ANNEX D PROBE CALIBRATION CERTIFICATE

E_Probe ER3DV6

Calibration Laboratory of
Schmid & Partner
Engineering AG
Zeughausstrasse 43, 8004 Zurich, Switzerland



S Schweizerischer Kalibrierdienst
C Service suisse d'étalonnage
S Servizio svizzero di taratura
S Swiss Calibration Service

Accredited by the Swiss Accreditation Service (SAS)
The Swiss Accreditation Service is one of the signatories to the EA
Multilateral Agreement for the recognition of calibration certificates

Accreditation No.: SCS 108

Client **TMC**

Certificate No: ER3-2428_Oct10

CALIBRATION CERTIFICATE

Object: ER3DV6 - SN:2428

Calibration procedure(s): QA CAL-02.v5 and QA CAL-25.v2
Calibration procedure for E-field probes optimized for close near field evaluations in air

Calibration date: October 20, 2010

This calibration certificate documents the traceability to national standards, which realize the physical units of measurements (SI).
The measurements and the uncertainties with confidence probability are given on the following pages and are part of the certificate.

All calibrations have been conducted in the closed laboratory facility: environment temperature (22 ± 3)°C and humidity < 70%.

Calibration Equipment used (M&TE critical for calibration)

| Primary Standards | ID # | Cal Date (Certificate No.) | Scheduled Calibration |
|----------------------------|-----------------|-----------------------------------|------------------------|
| Power meter E4419B | GB41293874 | 1-Apr-10 (No. 217-01030) | Apr-11 |
| Power sensor E4412A | MY41495277 | 1-Apr-10 (No. 217-01030) | Apr-11 |
| Power sensor E4412A | MY41498087 | 1-Apr-10 (No. 217-01030) | Apr-11 |
| Reference 3 dB Attenuator | SN: S5054 (3c) | 31-Mar-10 (No. 217-01026) | Mar-11 |
| Reference 20 dB Attenuator | SN: S5086 (20b) | 31-Mar-10 (No. 217-01028) | Mar-11 |
| Reference 30 dB Attenuator | SN: S5129 (30b) | 31-Mar-10 (No. 217-01027) | Mar-11 |
| Reference Probe ER3DV6 | SN: 2328 | 3-Oct-10 (No. ER3-2328_Oct10) | Oct-11 |
| DAE4 | SN: 789 | 19-Dec-09 (No. DAE4-789_Dec09) | Dec-10 |
| Secondary Standards | ID # | Check Date (in house) | Scheduled Check |
| RF generator HP 8648C | US3642U01700 | 4-Aug-99 (in house check Oct-09) | In house check: Oct-11 |
| Network Analyzer HP 8753E | US37390585 | 18-Oct-01 (in house check Oct-10) | In house check: Oct-11 |

| | Name | Function | Signature |
|----------------|---------------|-----------------------|-----------|
| Calibrated by: | Marcel Fehr | Laboratory Technician | |
| Approved by: | Katja Pokovic | Technical Manager | |

Issued: October 21, 2010

This calibration certificate shall not be reproduced except in full without written approval of the laboratory.

**Calibration Laboratory of
Schmid & Partner
Engineering AG**
Zeughausstrasse 43, 8004 Zurich, Switzerland



S Schweizerischer Kalibrierdienst
C Service suisse d'étalonnage
S Servizio svizzero di taratura
S Swiss Calibration Service

Accredited by the Swiss Accreditation Service (SAS)
The Swiss Accreditation Service is one of the signatories to the EA
Multilateral Agreement for the recognition of calibration certificates

Accreditation No.: **SCS 108**

Glossary:

| | |
|--------------------------|---|
| NORM _{x,y,z} | sensitivity in free space |
| DCP | diode compression point |
| CF | crest factor (1/duty_cycle) of the RF signal |
| A, B, C | modulation dependent linearization parameters |
| Polarization φ | φ rotation around probe axis |
| Polarization ϑ | ϑ rotation around an axis that is in the plane normal to probe axis (at measurement center), i.e., $\vartheta = 0$ is normal to probe axis |
| Connector Angle | information used in DASY system to align probe sensor X to the robot coordinate system |

Calibration is Performed According to the Following Standards:

- a) IEEE Std 1309-2005, "IEEE Standard for calibration of electromagnetic field sensors and probes, excluding antennas, from 9 kHz to 40 GHz", December 2005.

Methods Applied and Interpretation of Parameters:

- *NORM_{x,y,z}*: Assessed for E-field polarization $\vartheta = 0$ for XY sensors and $\vartheta = 90$ for Z sensor ($f \leq 900$ MHz in TEM-cell; $f > 1800$ MHz: R22 waveguide).
- *NORM(f)_{x,y,z}* = *NORM_{x,y,z}* * *frequency_response* (see Frequency Response Chart).
- *DCP_{x,y,z}*: DCP are numerical linearization parameters assessed based on the data of power sweep with CW signal (no uncertainty required). DCP does not depend on frequency nor media.
- *A_{x,y,z}; B_{x,y,z}; C_{x,y,z}* are numerical linearization parameters assessed based on the data of power sweep for specific modulation signal. The parameters do not depend on frequency nor media.
- *Spherical isotropy (3D deviation from isotropy)*: in a locally homogeneous field realized using an open waveguide setup.
- *Sensor Offset*: The sensor offset corresponds to the offset of virtual measurement center from the probe tip (on probe axis). No tolerance required.
- *Connector Angle*: The angle is assessed using the information gained by determining the *NORM_x* (no uncertainty required).

ER3DV6 SN:2428

October 20, 2010

Probe ER3DV6

SN:2428

| | |
|------------------|--------------------|
| Manufactured: | September 11, 2007 |
| Last calibrated: | October 20, 2009 |
| Recalibrated: | October 20, 2010 |

Calibrated for DASYS Systems

(Note: non-compatible with DASYS2 system!)

ER3DV6 SN:2428

October 20, 2010

DASY - Parameters of Probe: ER3DV6 SN:2428

Basic Calibration Parameters

| | Sensor X | Sensor Y | Sensor Z | Unc (k=2) |
|--|----------|----------|----------|--------------|
| Norm ($\mu\text{V}/(\text{V}/\text{m})^2$) | 1.52 | 1.59 | 1.86 | $\pm 10.1\%$ |
| DCP (mV) [^] | 91.5 | 93.0 | 98.9 | |

Modulation Calibration Parameters

| UID | Communication System Name | PAR | | A dB | B dBuV | C | VR mV | Unc (k=2) |
|-------|---------------------------|-----|---|---------|-----------|------|----------|--------------|
| 10000 | CW | | X | 0.00 | 0.00 | 1.00 | 300 | $\pm 1.5\%$ |
| | | | Y | 0.00 | 0.00 | 1.00 | 300 | |
| | | | Z | 0.00 | 0.00 | 1.00 | 300 | |

The reported uncertainty of measurement is stated as the standard uncertainty of measurement multiplied by the coverage factor k=2, which for a normal distribution corresponds to a coverage probability of approximately 95%.

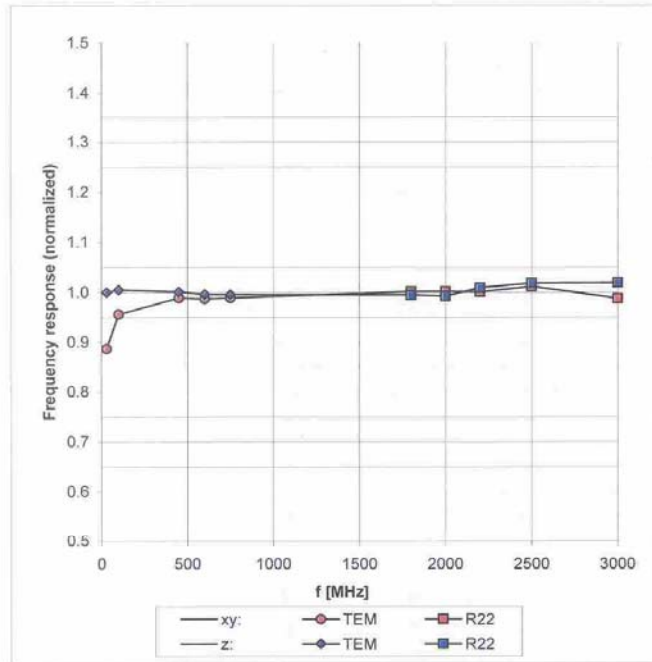
[^] numerical linearization parameter: uncertainty not required

ER3DV6 SN:2428

October 20, 2010

Frequency Response of E-Field

(TEM-Cell:ifi110 EXX, Waveguide R22)

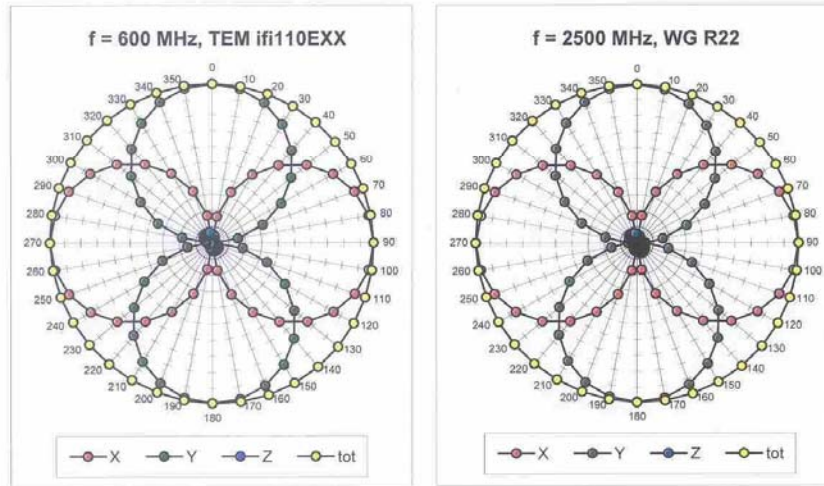


Uncertainty of Frequency Response of E-field: $\pm 6.3\%$ (k=2)

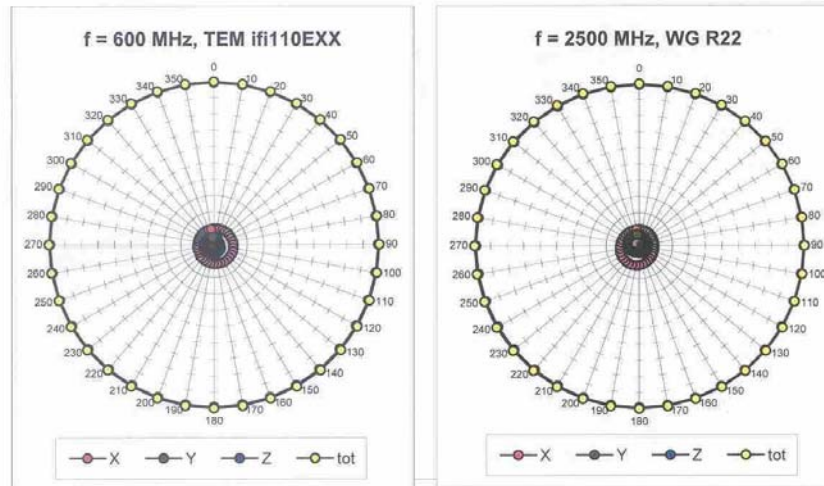
ER3DV6 SN:2428

October 20, 2010

Receiving Pattern (ϕ), $\vartheta = 0^\circ$



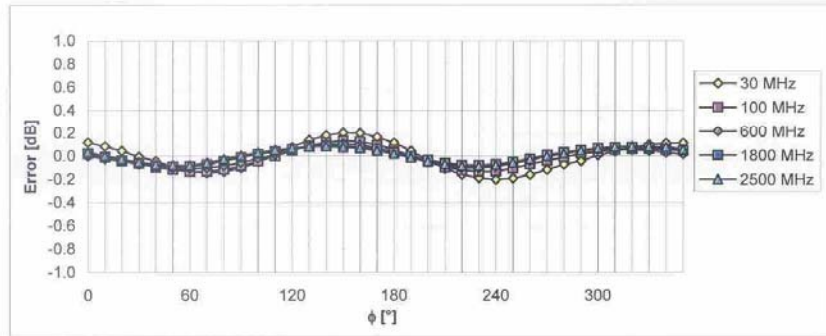
Receiving Pattern (ϕ), $\vartheta = 90^\circ$



ER3DV6 SN:2428

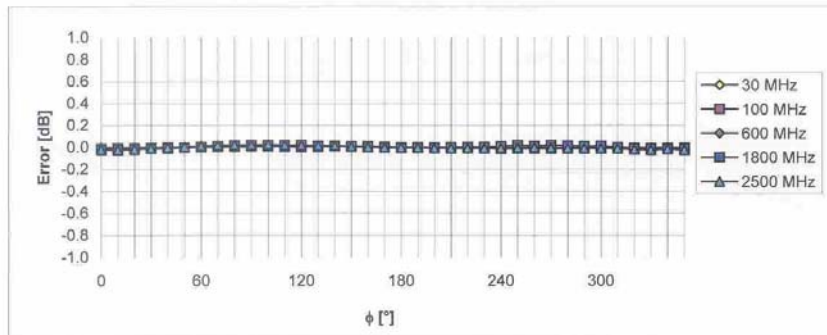
October 20, 2010

Receiving Pattern (ϕ), $\vartheta = 0^\circ$



Uncertainty of Axial Isotropy Assessment: $\pm 0.5\%$ ($k=2$)

Receiving Pattern (ϕ), $\vartheta = 90^\circ$

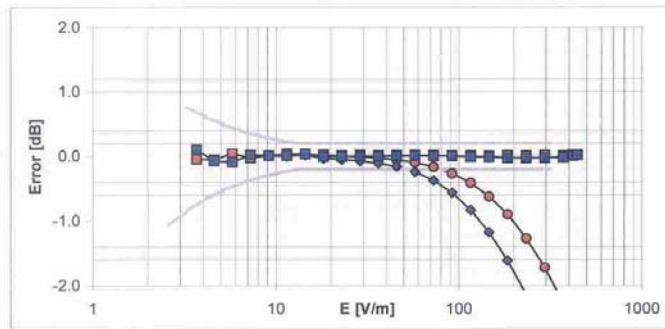
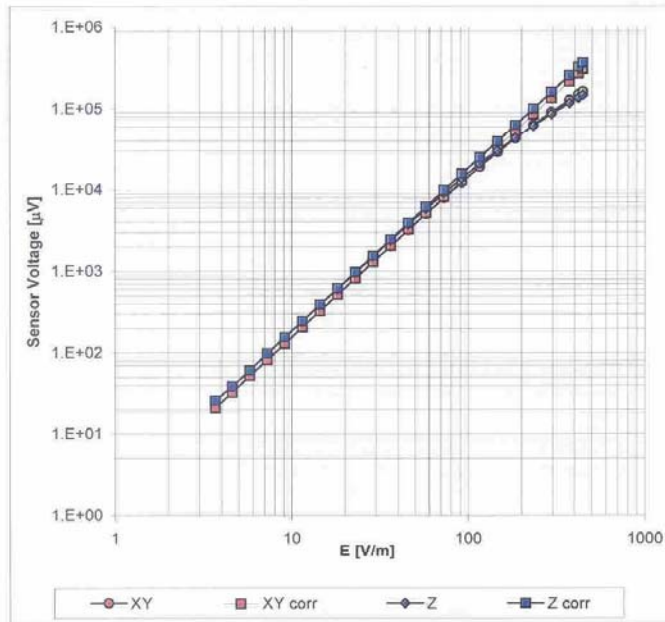


Uncertainty of Axial Isotropy Assessment: $\pm 0.5\%$ ($k=2$)

ER3DV6 SN:2428

October 20, 2010

Dynamic Range f(E-field) (Waveguide R22, f = 1800 MHz)

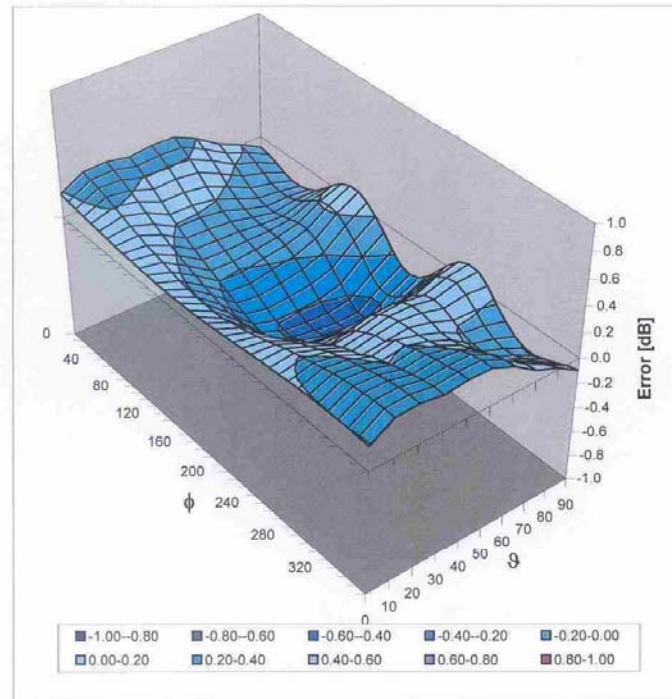


Uncertainty of Linearity Assessment: $\pm 0.6\%$ ($k=2$)

ER3DV6 SN:2428

October 20, 2010

Deviation from Isotropy in Air
Error (ϕ, ϑ), $f = 900$ MHz



Uncertainty of Spherical Isotropy Assessment: $\pm 2.6\%$ ($k=2$)

ER3DV6 SN:2428

October 20, 2010

Other Probe Parameters

| | |
|---|-------------|
| Sensor Arrangement | Rectangular |
| Connector Angle (°) | -218.7 |
| Mechanical Surface Detection Mode | enabled |
| Optical Surface Detection Mode | disabled |
| Probe Overall Length | 337 mm |
| Probe Body Diameter | 10 mm |
| Tip Length | 10 mm |
| Tip Diameter | 8.0 mm |
| Probe Tip to Sensor X Calibration Point | 2.5 mm |
| Probe Tip to Sensor Y Calibration Point | 2.5 mm |
| Probe Tip to Sensor Z Calibration Point | 2.5 mm |

H_Probe H3DV6

Calibration Laboratory of
Schmid & Partner
Engineering AG
Zeughausstrasse 43, 8004 Zurich, Switzerland



S Schweizerischer Kalibrierdienst
C Service suisse d'étalonnage
S Servizio svizzero di taratura
S Swiss Calibration Service

Accredited by the Swiss Accreditation Service (SAS)
The Swiss Accreditation Service is one of the signatories to the EA
Multilateral Agreement for the recognition of calibration certificates

Accreditation No.: SCS 108

Client TMC

Certificate No: H3-6260_Oct10

CALIBRATION CERTIFICATE

Object H3DV6 - SN:6260

Calibration procedure(s) QA CAL-03.v5 and QA CAL-25.v2
Calibration procedure for H-field probes optimized for close near field
evaluations in air

Calibration date: October 20, 2010

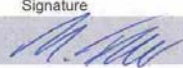

This calibration certificate documents the traceability to national standards, which realize the physical units of measurements (SI).
The measurements and the uncertainties with confidence probability are given on the following pages and are part of the certificate.

All calibrations have been conducted in the closed laboratory facility: environment temperature (22 ± 3)°C and humidity < 70%.

Calibration Equipment used (M&TE critical for calibration)

| Primary Standards | ID # | Cal Date (Certificate No.) | Scheduled Calibration |
|----------------------------|-----------------|--------------------------------|-----------------------|
| Power meter E4419B | GB41293874 | 1-Apr-10 (No. 217-01030) | Apr-11 |
| Power sensor E4412A | MY41495277 | 1-Apr-10 (No. 217-01030) | Apr-11 |
| Power sensor E4412A | MY41498087 | 1-Apr-10 (No. 217-01030) | Apr-11 |
| Reference 3 dB Attenuator | SN: S5054 (3c) | 31-Mar-10 (No. 217-01026) | Mar-11 |
| Reference 20 dB Attenuator | SN: S5086 (20b) | 31-Mar-10 (No. 217-01028) | Mar-11 |
| Reference 30 dB Attenuator | SN: S5129 (30b) | 31-Mar-10 (No. 217-01027) | Mar-11 |
| Reference Probe H3DV6 | SN: 6182 | 3-Oct-10 (No. H3-6182_Oct10) | Oct-11 |
| DAE4 | SN: 789 | 19-Dec-09 (No. DAE4-789_Dec09) | Dec-10 |

| Secondary Standards | ID # | Check Date (in house) | Scheduled Check |
|---------------------------|--------------|-----------------------------------|------------------------|
| RF generator HP 8648C | US3642U01700 | 4-Aug-99 (in house check Oct-09) | In house check: Oct-11 |
| Network Analyzer HP 8753E | US37390585 | 18-Oct-01 (in house check Oct-10) | In house check: Oct-11 |

| | Name | Function | Signature |
|----------------|---------------|-----------------------|---|
| Calibrated by: | Marcel Fehr | Laboratory Technician |  |
| Approved by: | Katja Pokovic | Technical Manager |  |

Issued: October 21, 2010

This calibration certificate shall not be reproduced except in full without written approval of the laboratory.

**Calibration Laboratory of
Schmid & Partner
Engineering AG**
Zeughausstrasse 43, 8004 Zurich, Switzerland



S Schweizerischer Kalibrierdienst
S Service suisse d'étalonnage
C Servizio svizzero di taratura
S Swiss Calibration Service

Accredited by the Swiss Accreditation Service (SAS)
The Swiss Accreditation Service is one of the signatories to the EA
Multilateral Agreement for the recognition of calibration certificates

Accreditation No.: **SCS 108**

Glossary:

| | |
|--------------------------|---|
| NORM _{x,y,z} | sensitivity in free space |
| DCP | diode compression point |
| CF | crest factor (1/duty_cycle) of the RF signal |
| A, B, C | modulation dependent linearization parameters |
| Polarization φ | φ rotation around probe axis |
| Polarization ϑ | ϑ rotation around an axis that is in the plane normal to probe axis (at measurement center), i.e., $\vartheta = 0$ is normal to probe axis |
| Connector Angle | information used in DASY system to align probe sensor X to the robot coordinate system |

Calibration is Performed According to the Following Standards:

- a) IEEE Std 1309-2005, "IEEE Standard for calibration of electromagnetic field sensors and probes, excluding antennas, from 9 kHz to 40 GHz", December 2005.

Methods Applied and Interpretation of Parameters:

- *NORM_{x,y,z}*: Assessed for E-field polarization $\vartheta = 0$ for XY sensors and $\vartheta = 90$ for Z sensor ($f \leq 900$ MHz in TEM-cell; $f > 1800$ MHz: R22 waveguide).
- $X, Y, Z(f)_{a0a1a2} = X, Y, Z_{a0a1a2} * frequency_response$ (see Frequency Response Chart).
- *DCP_{x,y,z}*: DCP are numerical linearization parameters assessed based on the data of power sweep with CW signal (no uncertainty required). DCP does not depend on frequency nor media.
- *A_{x,y,z}; B_{x,y,z}; C_{x,y,z}* are numerical linearization parameters assessed based on the data of power sweep for specific modulation signal. The parameters do not depend on frequency nor media.
- *Spherical isotropy (3D deviation from isotropy)*: in a locally homogeneous field realized using an open waveguide setup.
- *Sensor Offset*: The sensor offset corresponds to the offset of virtual measurement center from the probe tip (on probe axis). No tolerance required.
- *Connector Angle*: The angle is assessed using the information gained by determining the X_{a0a1a2} (no uncertainty required).

H3DV6 SN:6260

October 20, 2010

Probe H3DV6

SN:6260

| | |
|------------------|-------------------|
| Manufactured: | September 7, 2007 |
| Last calibrated: | October 20, 2009 |
| Recalibrated: | October 20, 2010 |

Calibrated for DASY Systems

(Note: non-compatible with DASY2 system!)

H3DV6 SN:6260

October 20, 2010

DASY - Parameters of Probe: H3DV6 SN:6260

Basic Calibration Parameters

| | | Sensor X | Sensor Y | Sensor Z | Unc (k=2) |
|--------------------------------|----|----------|----------|----------|--------------|
| Norm (A/m / $\sqrt{(\mu V)}$) | a0 | 2.47E-3 | 2.49E-3 | 2.95E-3 | $\pm 10.1\%$ |
| Norm (A/m / $\sqrt{(\mu V)}$) | a1 | -2.97E-5 | 5.62E-6 | -4.47E-5 | $\pm 10.1\%$ |
| Norm (A/m / $\sqrt{(\mu V)}$) | a2 | 4.84E-5 | 4.36E-5 | 6.01E-5 | $\pm 10.1\%$ |
| DCP (mV) ^A | | 84.5 | 90.3 | 83.9 | |

Modulation Calibration Parameters

| UID | Communication System Name | PAR | | A dB | B dBuV | C | VR mV | Unc (k=2) |
|-------|---------------------------|------|---|---------|-----------|------|----------|--------------|
| 10000 | CW | 0.00 | X | 0.00 | 0.00 | 1.00 | 300 | $\pm 1.5\%$ |
| | | | Y | 0.00 | 0.00 | 1.00 | 300 | |
| | | | Z | 0.00 | 0.00 | 1.00 | 300 | |

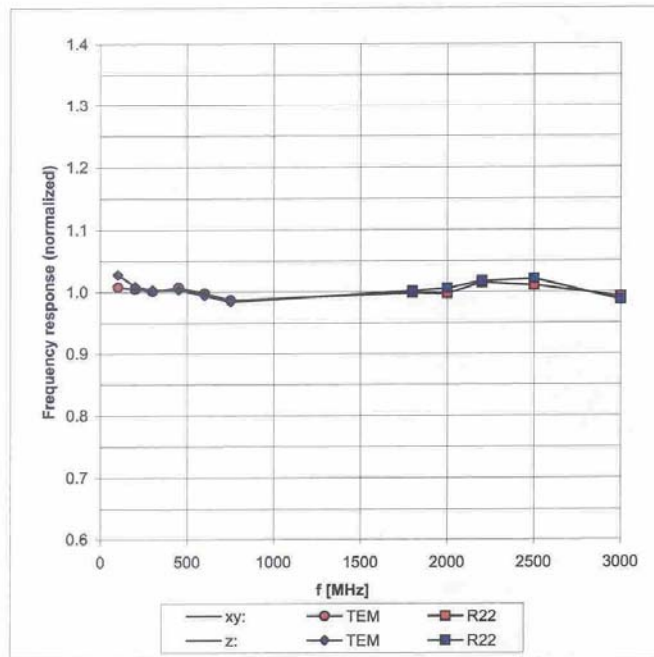
The reported uncertainty of measurement is stated as the standard uncertainty of measurement multiplied by the coverage factor k=2, which for a normal distribution corresponds to a coverage probability of approximately 95%.

¹ numerical linearization parameter: uncertainty not required

H3DV6 SN:6260

October 20, 2010

Frequency Response of H-Field (TEM-Cell:ifi110 EXX, Waveguide R22)

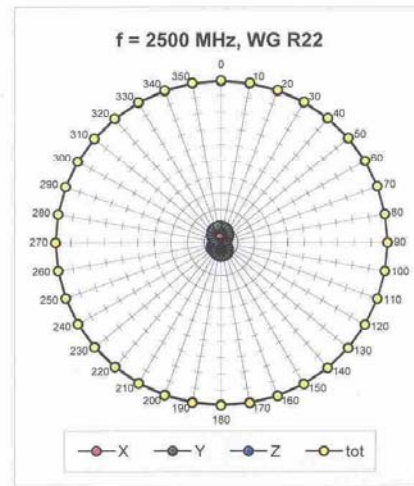
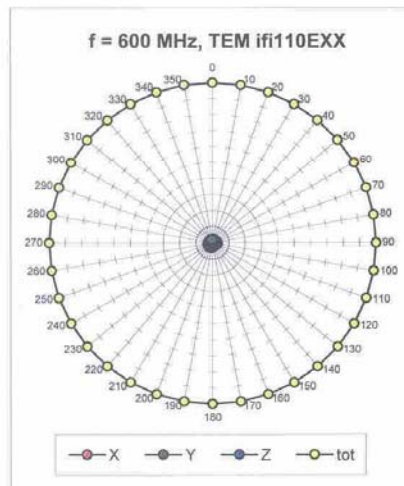


Uncertainty of Frequency Response of H-field: $\pm 6.3\%$ ($k=2$)

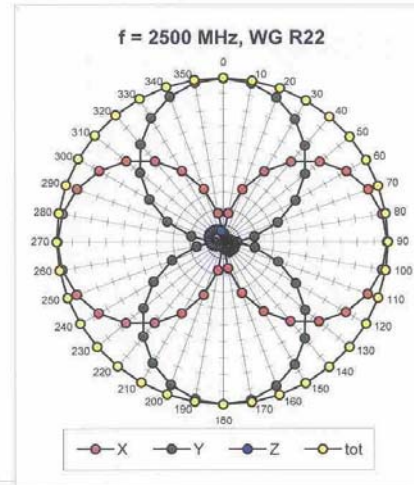
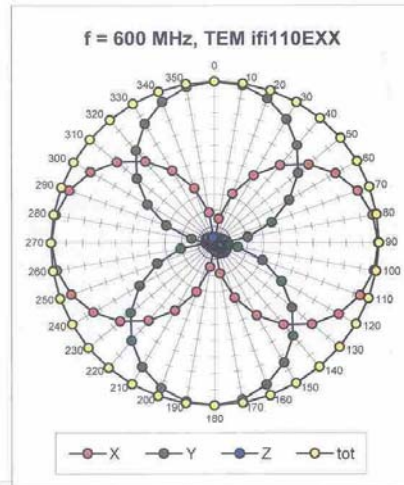
H3DV6 SN:6260

October 20, 2010

Receiving Pattern (ϕ), $\vartheta = 90^\circ$



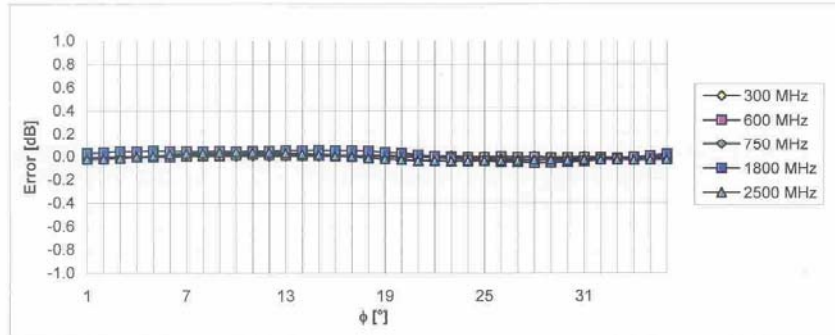
Receiving Pattern (ϕ), $\vartheta = 0^\circ$



H3DV6 SN:6260

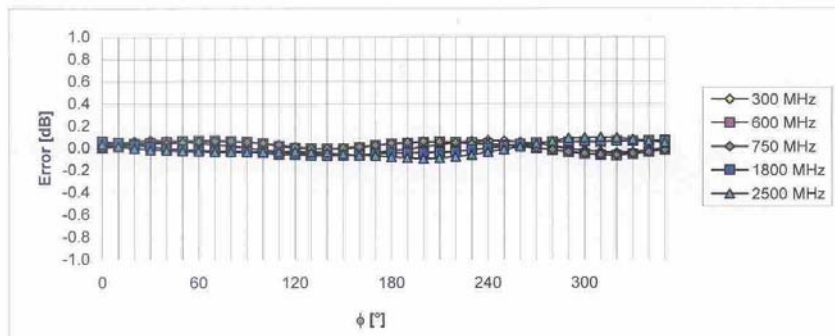
October 20, 2010

Receiving Pattern (ϕ), $\vartheta = 90^\circ$



Uncertainty of Axial Isotropy Assessment: $\pm 0.5\%$ (k=2)

Receiving Pattern (ϕ), $\vartheta = 0^\circ$

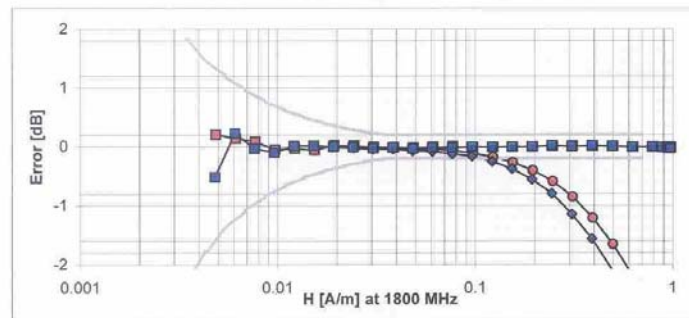
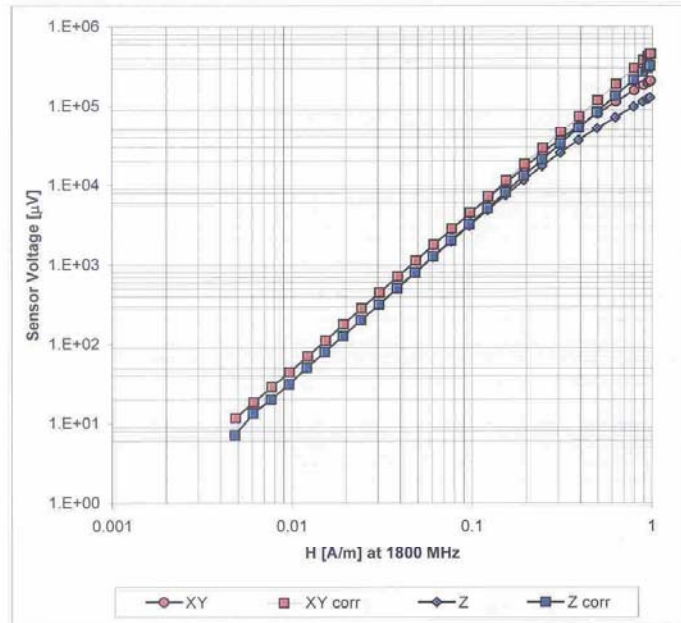


Uncertainty of Axial Isotropy Assessment: $\pm 0.5\%$ (k=2)

H3DV6 SN:6260

October 20, 2010

Dynamic Range f(H-field) (Waveguide R22, f = 1800 MHz)

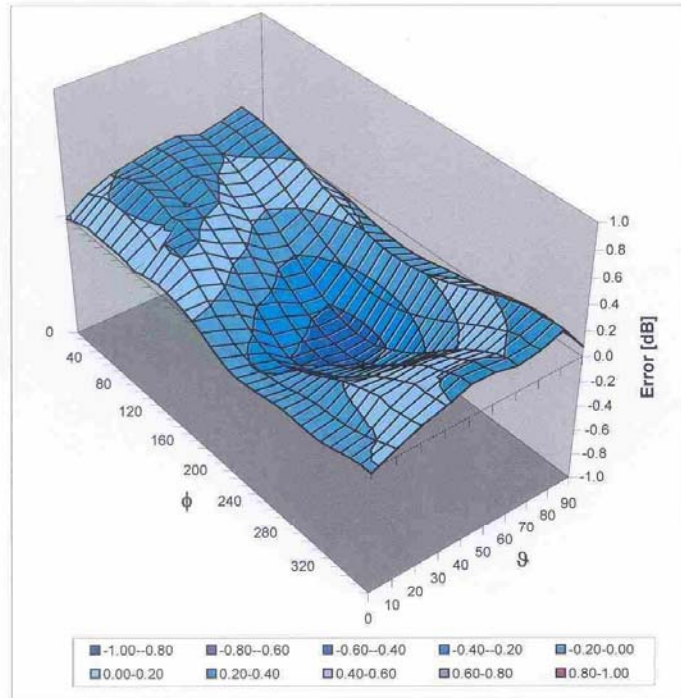


Uncertainty of Linearity Assessment: $\pm 0.6\%$ ($k=2$)

H3DV6 SN:6260

October 20, 2010

Deviation from Isotropy in Air
Error (ϕ, ϑ), $f = 900$ MHz



Uncertainty of Spherical Isotropy Assessment: $\pm 2.6\%$ ($k=2$)

H3DV6 SN:6260

October 20, 2010

Other Probe Parameters

| | |
|---|-------------|
| Sensor Arrangement | Rectangular |
| Connector Angle (°) | -154.1 |
| Mechanical Surface Detection Mode | enabled |
| Optical Surface Detection Mode | disabled |
| Probe Overall Length | 337 mm |
| Probe Body Diameter | 10 mm |
| Tip Length | 20 mm |
| Tip Diameter | 6.0 mm |
| Probe Tip to Sensor X Calibration Point | 3 mm |
| Probe Tip to Sensor Y Calibration Point | 3 mm |
| Probe Tip to Sensor Z Calibration Point | 3 mm |