

## Your cellphone .....



- 1.1 Keys**
- Navigation key
    - Confirm an option (press the middle of the key)
    - Access to menu (short keypress)
    - Show/hide shortlist menu(long keypress)
  - Answer
    - Send a call
    - Access call memory (short keypress)
    - Access to Fake call (long keypress)
  - Switch on/Switch off the cellphone (long keypress)
  - End call
  - Return to the idle screen
  - Left softkey
  - Right softkey
  - Access your voicemail (long keypress)
  - Input the "#" in Idle
  - In idle screen:
    - Long/short keypress: Lock/Unlock the keypad
  - In edit mode:
    - Short keypress: input space
    - Long keypress: switch language
    - Fn key + Space: switch input mode

- In idle screen:
  - Press to access shortcuts
  - Fn + P: access to Profiles
  - Fn + Q: access to Clock
  - Fn + S: access to Notes
- In edit mode:
  - Press once to input top-half character.
  - Press twice to lock top-half inputting mode, then press once to unlock top-half inputting mode.
- Long keypress: access to Dictionary.
- In edit mode:
  - Short press: popup symbol page to select special character by navigation key
  - Long press & Fn+SYM: popup smileys page to select special smileys by navigation key
- Delete one by one (short keypress)
- Delete one by one quickly (long keypress)
- Switch the uppercase and minuscule (in edit screen)
- Return a cursor to the next line.

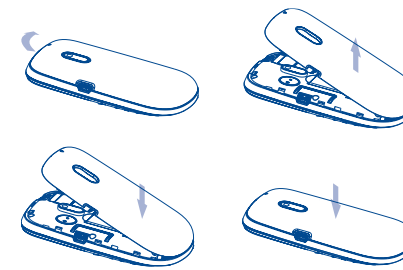
- 1.2 Main screen icons (1)**
- Battery charge level**
  - Vibrate alert:** Your cellphone vibrates, but does not ring or beep with the exception of the alarm.
  - Headset connected.**
  - Keypad locked.**
  - Call forwarding activated:** your calls are forwarded.

- Alarm clock.**
- Level of network reception.**
- Voicemail message arrived.**
- Missed calls.**
- Radio is on.**
- Stopwatch is active.**
- WAP alerts (1).**
- Roaming.**
- Memory card scanning in progress.**
- Memory card scanning completed.**
- Line switching (2):** indicates the selected line.
- GPRS connection status (Blue - Activated).**
- GPRS connecting.**
- Message receipt in progress.**
- Sending a message.**
- Silence mode:** your cellphone neither rings, beeps nor vibrates except for the alarms.
- Message unread.**
- Message list is full:** your terminal cannot accept any new messages. You must access the message list and delete at least one message on your SIM card.
- Flight mode.**

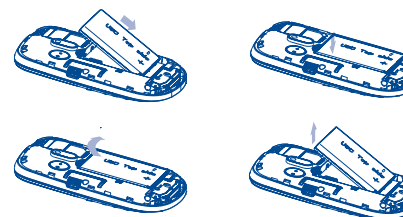
## 2 Getting started .....

### 2.1 Set-up

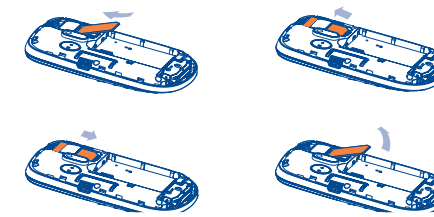
#### Removing or installing the back cover



#### Installing or removing the battery



#### Inserting or removing the SIM card



Place the SIM card with the chip facing downwards and slide it into its housing. Make sure that it is correctly inserted. To remove the card, press the bottom and slide it out. Please power off your cellphone before you remove the SIM card.

### 2.2 Power on your cellphone

Hold down the key until the cellphone powers on.

### 2.3 Power off your cellphone

Hold down the key until the cellphone power off.

### 3.2 Call memory

You can access your call memory by pressing the key from the idle screen. Check "Outgoing calls", "Missed calls", "Answered calls".

## 4 Menu arrange .....

Main Menu is designed to vary according to your preference.

#### Change the order

From main menu, press left softkey and select "Move" or long keypress key till tick "v" is shown, then move the cursor to your favorite destination and confirm with key.

#### Show/Hide

Access "Menu arrange", press key till tick ("v") show or off, it will show/hide some main menu.

## 5 Messages .....

### 5.1 Messages: Text/Multimedia message

#### 5.1.1 Create message

From the main menu select "Messages" to create text/multimedia message.

You can type a message and you can also modify a predefined message in **Templates** or customize your message by adding pictures, photos, sounds, titles, etc (only available while editing a MMS). While writing a message, select "Options" to access all the messaging options. You can save your messages that you send often to **Drafts** or **Templates** (MMS only).

## 3 Calls.....

### 3.1 Making a call

Dial the desired number then press the key to place the call. If you make a mistake, you can delete the incorrect digits by pressing the right softkey or key.

To hang up the call, press the key.

#### Making an emergency call

If your cellphone has network coverage, dial emergency number and press the key to make an emergency call. This works even without a SIM card and without typing the PIN code or unlocking the keypad.

(1) Depending on your network operator.

OT-355A  
ALCATEL  
mobile phones

### 5.1.2 Inbox

All received messages (read and unread) are stored in the same Inbox.

#### Group by sender/Group by receiver (1)

Messages can be grouped by sender/receiver ("Options/Group by sender"/"Options/Group by receiver"). And you are enabled to quick search the messages by pressing the key associated with the first letter of sender/receiver's name.

### 5.2 SMS Conversation (chat) (2)

Access to "Advanced" and select "Switch view mode", keep the conversation going in real time using SMS chat. You may separate chat for every contact with whom you exchange short text messages.

### 5.3 Email (3)

Your cellphone has an email client with the settings predefined for a few popular email services like - GoogleMail, Windows live, Yahoo, AOL, etc.

## 6 Directory .....

### 6.1 Consulting your directory

To access the **Directory** from the main screen, press the key and select the icon.

### 6.2 Adding a contact

Select the contacts list in which you wish to add a contact to, press the "Options" softkey, select "Add contact" then Save.

## 7 Fake Call .....

Protect yourself from annoying situations with the "Fake Call". In this menu, you can set "Caller name/nb", "Call time" and "Ringtone".

When the timer reaches, the cellphone will ring and display like receiving a real cellphone call. Press key, pretend answering a call, the screen will display just like have an ongoing call. Press key, pretend to reject the call, the call will terminate automatically.

## 8 Radio .....

Your cellphone is equipped with a Radio (1) with RDS functionality. You can use the application as a traditional Radio with saved channels or with parallel visual information related to the radio program on the display, if you tune to stations that offer Visual Radio service. You can listen to it while running other applications.

## 9 Internet (2) .....

Access WAP options: **Homepage**, **Bookmarks**, **Go to URL**, **Recent pages**, **Offline pages**.

### 9.1 WAP .....

Your cellphone is equipped with a weather function for consulting up to 3-day forecast of favorite cities.

### 9.2 Weather .....

### 9.3 News.....

It is a huge time saver providing news updates from a website in a simple form. Once subscribed to a channel, it gives you the ability to track and manage all your favorite RSS content on your cellphone at anytime, anywhere!

#### Available options:

- |                                |   |
|--------------------------------|---|
| View                           | Message title or message summary of a channel with URL will be shown.   |
| Update                         | Refresh the content of a channel.   |
| Create channel                 | Create a new channel with name and URL.   |
| Delete                         | Delete the channel.   |
| Edit                           | Edit the name or URL of a channel.  |
| Update all                     | Refresh all channels.   |
| Settings                       | Select a regular interval to retrieve updates automatically, set to show images or not, as well as a WAP account to connect to. |
| Enable/Disable all auto-update | Activate auto-update or not to all channels.  |
| Send                           | Share a channel with your friend by sending it by SMS, MMS or Email.  |

## 10 ICE .....

ICE (in case of emergency) are 3 numbers emergency services can call if you have an accident, you can also add useful information such as blood type, allergy. Access to "ICE" menu from main menu and below options are available: View, Add/Edit, Delete.

## 11 Games.....

Your cellphones includes some games. Select "Game settings", it allows you to manage settings, in which you may set background audio and vibration alert.

## 12 Camera.....

Your cellphone is fitted with a camera for taking photos that you can use in different ways:

- Store them in your "Media album/My creations".
- Send them in a multimedia message (MMS) to a cellphone or an email address.
- Send them directly by Email.
- Customize your main screen.
- Select them as incoming call image to a contact in your directory.
- Transfer them by microSD card to your computer.

## 13 Profiles.....

With this menu, you may personalise ringtones for different events and environments.

## 14 Media album.....

You will have an access to all audio and visual files stored in cellphone or in Medium Album. You can access a number of items with this option: **My audios**, **My images**, **Unknown files** and **Memory status**.

#### Inserting the memory card



- Unclip the cover and insert the MicroSD card with golden contact downwards into the slot.
- Unclip the cover and gently push the memory card until unlocked.
- Take out your MicroSD card and clip the cover closed.

## 15 Music Player .....

Access this feature from the main menu by selecting "Music player". You will have full flexibility of managing music both on your cellphone and memory card.

## 16 Services.....

Contact your network operator to check service availability.

## 17 Others.....

### 17.1 Calendar .....

Once you enter this menu from main menu, there is a monthly-view calendar for you to keep track of important meetings, appointments, etc. Days with events entered will be marked in color.

### 17.2 Calculator .....

Access this feature by selecting "Calculator" from the main menu. Enter a number, select the type of operation to be performed using the navigation keys, and enter the second number, then press key or left softkey to display the result.

### 17.3 Notes.....

You can create a note in text or voice format by accessing "Notes" from main menu.

### 17.4 Tasks.....

Enables you to easily manage and track the progress of an task with priorities. All the tasks will be sorted by due date.

### 17.5 Clock .....

#### 17.5.1 Alarm

Your cellphone has a built-in alarm clock with a snooze feature.

#### 17.5.2 Clock

Allows you to have settings of date and time, including 12/24h format.

#### 17.5.3 World clock

The World clock shows current local time and the time zone in different cities.

#### 17.5.4 Stopwatch .....

The stopwatch is a simple application for measuring time with the possibility to register several results and suspend/resume measurement.

#### 17.6 Converter .....

Unit converter and Currency converter.

## 18 Settings .....

From the main menu, select the menu icon and select the function of your choice in order to customize your cellphone: Display, Languages, Headset, Input mode, Vocabulary, Keys, Security, Networks, Connectivity, Restore default set, Call settings.

### 18.1 Keys

You may set the keypad to which you prefer to. Fn + Keys: you may define the combined Fn key function and to get shortcuts with below options: Edit/Add/Delete.

### 18.2 Call settings

**My numbers**  
Type in or modify your cellphone number and confirm by pressing key. Your cellphone number is usually written on your SIM card.

**Billings (1)**  
You can access different items with this option: **Amount**, **Duration**, **GPRS counter**, **Beep duration**.

(1) Depending on your network operator.

ALCATEL is a trademark of Alcatel-Lucent and is used under license by TCT Mobile Limited.

All rights reserved © Copyright 2010 TCT Mobile Limited.

TCT Mobile Limited reserves the right to alter material or technical specification without prior notice.

Prolonged exposure to music at full volume on the music player may damage the listener's hearing. Set your cellphone volume safely. Use only headphones recommended by TCT Mobile Limited and its affiliates.

(1) The option of Group by receiver is available in Outbox, Sent, and Draft folders only.  
(2) Depending on your network operator. May cause additional network charges for data flow to provide this service. Extra fees might also be charged in roaming states.  
(3) HTML email and image in email not supported.

(1) The quality of the radio depends on the coverage of the radio station in that particular area.  
(2) Depending on your network operator. May cause additional network charges for data flow to provide this service. Extra fees might also be charged in roaming states.

(1) The icons and illustrations in this guide are provided for informational purposes only.

(1) Depending on your network operator.  
(2) Contact your network operator to check service availability.

