



SAR TEST REPORT

No. 2009SAR00065

For

TCT Mobile Limited

GSM/GPRS 850/1900 dual-band mobile phone

EL09 A

ELLE 09 A

With

Hardware Version: Proto

Software Version: V332

FCCID: RAD121

Issued Date: 2009-09-10



No. DAT-P-114/01-01

Note:

The test results in this test report relate only to the devices specified in this report. This report shall not be reproduced except in full without the written approval of TMC Beijing.

Test Laboratory:

TMC Beijing, Telecommunication Metrology Center of Ministry of Industry and Information Technology

No. 52, Huayuan Bei Road, Haidian District, Beijing, P. R. China 100083.

Tel:+86(0)10-62303288-2105, Fax:+86(0)10-62304793 Email:welcme@emcite.com. www.emcite.com

©Copyright. All rights reserved by TMC Beijing.

TABLE OF CONTENT

1 TEST LABORATORY	3
1.1 TESTING LOCATION	3
1.2 TESTING ENVIRONMENT.....	3
1.3 PROJECT DATA	3
1.4 SIGNATURE.....	3
2 CLIENT INFORMATION	4
2.1 APPLICANT INFORMATION	4
2.2 MANUFACTURER INFORMATION	4
3 EQUIPMENT UNDER TEST (EUT) AND ANCILLARY EQUIPMENT (AE)	5
3.1 ABOUT EUT	5
3.2 INTERNAL IDENTIFICATION OF EUT USED DURING THE TEST	5
3.3 INTERNAL IDENTIFICATION OF AE USED DURING THE TEST.....	5
4 CHARACTERISTICS OF THE TEST	6
4.1 APPLICABLE LIMIT REGULATIONS	6
4.2 APPLICABLE MEASUREMENT STANDARDS.....	6
5 OPERATIONAL CONDITIONS DURING TEST	7
5.1 SCHEMATIC TEST CONFIGURATION.....	7
5.2 SAR MEASUREMENT SET-UP.....	7
5.3 DASY4 E-FIELD PROBE SYSTEM.....	8
5.4 E-FIELD PROBE CALIBRATION	9
5.5 OTHER TEST EQUIPMENT	10
5.6 EQUIVALENT TISSUES.....	10
5.7 SYSTEM SPECIFICATIONS.....	11
6 CONDUCTED OUTPUT POWER MEASUREMENT.....	11
6.1 SUMMARY	11
6.2 CONDUCTED POWER	12
7 TEST RESULTS	12
7.1 DIELECTRIC PERFORMANCE	12
7.2 SYSTEM VALIDATION.....	13
7.3 SUMMARY OF MEASUREMENT RESULTS (RESULTS IN No.2009SAR0030).....	14
7.4 SUMMARY OF MEASUREMENT RESULTS (WORST CASE SPOTS CHECK RESULTS)	16
7.5 SUMMARY OF MEASUREMENT RESULTS (BLUETOOTH FUNCTION)	16
7.6 CONCLUSION.....	17
8 MEASUREMENT UNCERTAINTY	17
9 MAIN TEST INSTRUMENTS	18
ANNEX A MEASUREMENT PROCESS.....	19
ANNEX B TEST LAYOUT	20
ANNEX C GRAPH RESULTS.....	25
ANNEX D SYSTEM VALIDATION RESULTS	69
ANNEX E PROBE CALIBRATION CERTIFICATE.....	73
ANNEX F DIPOLE CALIBRATION CERTIFICATE	82

1 Test Laboratory

1.1 Testing Location

Company Name: TMC Beijing, Telecommunication Metrology Center of MIIT
Address: No 52, Huayuan beilu, Haidian District, Beijing,P.R.China
Postal Code: 100083
Telephone: +86-10-62303288
Fax: +86-10-62304793

1.2 Testing Environment

Temperature: 18°C~25 °C,
Relative humidity: 30%~ 70%
Ground system resistance: < 0.5 Ω

Ambient noise is checked and found very low and in compliance with requirement of standards.
Reflection of surrounding objects is minimized and in compliance with requirement of standards.

1.3 Project Data

Project Leader: Sun Qian
Test Engineer: Lin Xiaojun
Testing Start Date: September 3, 2009
Testing End Date: September 4, 2009

1.4 Signature



Lin Xiaojun
(Prepared this test report)



Sun Qian
(Reviewed this test report)



Lu Bingsong
Deputy Director of the laboratory
(Approved this test report)

2 Client Information

2.1 Applicant Information

Company Name: TCT Mobile Limited
Address /Post: 4/F, South Building, No.2966, Jinke Road, Zhangjiang High-Tech Park,
Pudong, Shanghai, 201203, P.R.China
City: Shanghai
Postal Code: 201203
Country: P. R. China
Telephone: 0086 21 6146 0627
Fax: 0086 21 6146 0602

2.2 Manufacturer Information

Company Name: TCT Mobile Limited
Address /Post: 4/F, South Building, No.2966, Jinke Road, Zhangjiang High-Tech Park,
Pudong, Shanghai, 201203, P.R.China
City: Shanghai
Postal Code: 201203
Country: P. R. China
Telephone: 0086 21 6146 0627
Fax: 0086 21 6146 0602

3 Equipment Under Test (EUT) and Ancillary Equipment (AE)

3.1 About EUT

EUT Description: GSM/GPRS 850/1900 dual-band mobile phone
 Model Name: EL09 A
 Marketing Name: ELLE 09 A
 GSM Frequency Band: GSM 850/GSM 1900



Picture 1: Constituents of the sample

3.2 Internal Identification of EUT used during the test

EUT ID*	SN or IMEI	HW Version	SW Version
EUT1	012057000000410	Proto	V332

*EUT ID: is used to identify the test sample in the lab internally.

3.3 Internal Identification of AE used during the test

AE ID*	Description	Model	SN	Manufacturer
AE1	Travel Adapter	T5002684AGAC	\	BYD
AE3	Battery	CAB3010010C1	\	BYD
AE4	Headset	CCB3110B10C0	\	Shunda

*AE ID: is used to identify the test sample in the lab internally.

4 CHARACTERISTICS OF THE TEST

4.1 Applicable Limit Regulations

EN 50360–2001: Product standard for the measurement of Specific Absorption Rate related to human exposure to electromagnetic fields from mobile phones.

It specifies the maximum exposure limit of **2.0 W/kg** as averaged over any 10 gram of tissue for portable devices being used within 20 cm of the user in the uncontrolled environment.

ANSI C95.1–1999: IEEE Standard for Safety Levels with Respect to Human Exposure to Radio Frequency Electromagnetic Fields, 3 kHz to 300 GHz.

It specifies the maximum exposure limit of **1.6 W/kg** as averaged over any 1 gram of tissue for portable devices being used within 20 cm of the user in the uncontrolled environment.

4.2 Applicable Measurement Standards

EN 62209-1-2006: Human exposure to radio frequency fields from hand-held and body-mounted wireless communication devices – Human models, instrumentation, and procedures –Part 1: Procedure to determine the Specific Absorption Rate (SAR) for hand-held devices used in close proximity to the ear (frequency range of 300 MHz to 3 GHz)

IEEE 1528–2003: Recommended Practice for Determining the Peak Spatial-Average Specific Absorption Rate (SAR) in the Human Body Due to Wireless Communications Devices: Experimental Techniques.

OET Bulletin 65 (Edition 97-01) and Supplement C(Edition 01-01): Additional Information for Evaluating Compliance of Mobile and Portable Devices with FCC Limits.

IEC 62209-1-2005: Human exposure to radio frequency fields from hand-held and body-mounted wireless communication devices – Human models, instrumentation, and procedures –Part 1: Procedure to determine the Specific Absorption Rate (SAR) for hand-held devices used in close proximity to the ear (frequency range of 300 MHz to 3 GHz)

IEC 62209-2 (Draft): Human exposure to radio frequency fields from hand-held and body-mounted wireless communication devices – Human models, instrumentation, and procedures – Part 2: Procedure to determine the Specific Absorption Rate (SAR) in the head and body for 30MHz to 6GHz Handheld and Body-Mounted Devices used in close proximity to the Body.

They specify the measurement method for demonstration of compliance with the SAR limits for such equipments.

5 OPERATIONAL CONDITIONS DURING TEST

5.1 Schematic Test Configuration

During SAR test, EUT is in Traffic Mode (Channel Allocated) at Normal Voltage Condition. A communication link is set up with a System Simulator (SS) by air link, and a call is established. The Absolute Radio Frequency Channel Number (ARFCN) is allocated to 128, 190 and 251 respectively in the case of GSM 850 MHz, or to 512, 661 and 810 respectively in the case of PCS 1900 MHz. The EUT is commanded to operate at maximum transmitting power.

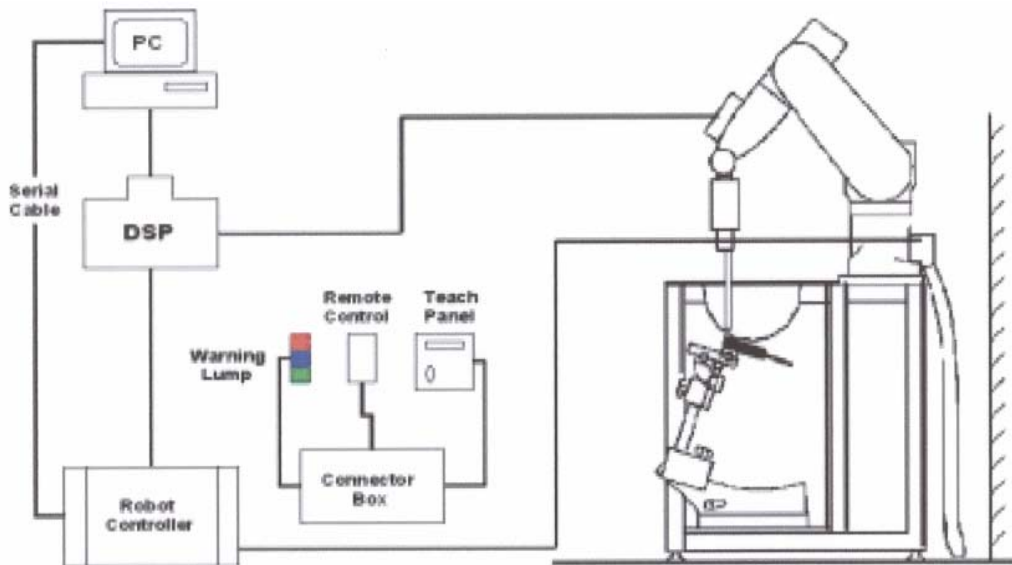
The EUT shall use its internal transmitter. The antenna(s), battery and accessories shall be those specified by the manufacturer. The EUT battery must be fully charged and checked periodically during the test to ascertain uniform power output. If a wireless link is used, the antenna connected to the output of the base station simulator shall be placed at least 50 cm away from the handset. The signal transmitted by the simulator to the antenna feeding point shall be lower than the output power level of the handset by at least 30 dB.

The EUT in this report is a variant type of the EUT **OT-660A** in report **NO. 2009SAR00030**, so in this report it was just tested at the worst cases for each band (see **Table 12**, for the other cases the values in report No. 2009SAR00030 can be referred to (see **Table 8 to 11**).

5.2 SAR Measurement Set-up

These measurements were performed with the automated near-field scanning system DASY4 Professional from Schmid & Partner Engineering AG (SPEAG). The system is based on a high precision robot (working range greater than 0.9m), which positions the probes with a positional repeatability of better than $\pm 0.02\text{mm}$. Special E- and H-field probes have been developed for measurements close to material discontinuity, the sensors of which are directly loaded with a Schottky diode and connected via highly resistive lines (length =300mm) to the data acquisition unit.

A cell controller system contains the power supply, robot controller, teaches pendant (Joystick), and remote control, is used to drive the robot motors. The PC consists of the Micron Pentium III 800 MHz computer with Windows 2000 system and SAR Measurement Software DASY4 Professional, A/D interface card, monitor, mouse, and keyboard. The Stäubli Robot is connected to the cell controller to allow software manipulation of the robot. A data acquisition electronic (DAE) circuit performs the signal amplification, signal multiplexing, AD-conversion, offset measurements, mechanical surface detection, collision detection, etc. is connected to the Electro-optical coupler (EOC). The EOC performs the conversion from the optical into digital electric signal of the DAE and transfers data to the PC plug-in card.



Picture 2: SAR Lab Test Measurement Set-up

The DAE consists of a highly sensitive electrometer-grade preamplifier with auto-zeroing, a channel and gain-switching multiplexer, a fast 16 bit AD-converter and a command decoder and control logic unit. Transmission to the PC-card is accomplished through an optical downlink for data and status information and an optical uplink for commands and clock lines. The mechanical probe mounting device includes two different sensor systems for frontal and sidewise probe contacts. They are also used for mechanical surface detection and probe collision detection. The robot uses its own controller with a built in VME-bus computer.

5.3 Dasy4 E-field Probe System

The SAR measurements were conducted with the dosimetric probe ES3DV3 (manufactured by SPEAG), designed in the classical triangular configuration and optimized for dosimetric evaluation. The probe has been calibrated according to the standard procedure with an accuracy of better than $\pm 10\%$. The spherical isotropy was evaluated and found to be better than $\pm 0.25\text{dB}$.

ES3DV3 Probe Specification

Construction	Symmetrical design with triangular core Interleaved sensors Built-in shielding against static charges PEEK enclosure material (resistant to organic solvents, e.g., DGBE)
Calibration	Basic Broad Band Calibration in air Conversion Factors (CF) for HSL 900 and HSL 1810 Additional CF for other liquids and frequencies upon request
Frequency	10 MHz to 4 GHz; Linearity: $\pm 0.2 \text{ dB}$ (30 MHz to 4 GHz)



Picture 3: ES3DV3 E-field

Directivity	± 0.2 dB in HSL (rotation around probe axis) ± 0.3 dB in tissue material (rotation normal to probe axis)
Dynamic Range	5 µW/g to > 100 mW/g; Linearity: ± 0.2 dB
Dimensions	Overall length: 330 mm (Tip: 20 mm) Tip diameter: 3.9 mm (Body: 12 mm) Distance from probe tip to dipole centers: 2.0 mm
Application	General dosimetry up to 4 GHz Dosimetry in strong gradient fields Compliance tests of mobile phones



Picture4:ES3DV3 E-field probe

5.4 E-field Probe Calibration

Each probe is calibrated according to a dosimetric assessment procedure with accuracy better than ± 10%. The spherical isotropy was evaluated and found to be better than ± 0.25dB. The sensitivity parameters (NormX, NormY, NormZ), the diode compression parameter (DCP) and the conversion factor (ConvF) of the probe are tested.

The free space E-field from amplified probe outputs is determined in a test chamber. This is performed in a TEM cell for frequencies below 1 GHz, and in a wave guide above 1 GHz for free space. For the free space calibration, the probe is placed in the volumetric center of the cavity and at the proper orientation with the field. The probe is then rotated 360 degrees.

E-field temperature correlation calibration is performed in a flat phantom filled with the appropriate simulated brain tissue. The measured free space E-field in the medium correlates to temperature rise in a dielectric medium. For temperature correlation calibration a RF transparent thermistor-based temperature probe is used in conjunction with the E-field probe.

$$SAR = C \frac{\Delta T}{\Delta t}$$

Where: Δt = Exposure time (30 seconds),
C = Heat capacity of tissue (brain or muscle),
 ΔT = Temperature increase due to RF exposure.

Or

$$SAR = \frac{|E|^2 \sigma}{\rho}$$

Where:

σ = Simulated tissue conductivity,



Picture 5: Device Holder

ρ = Tissue density (kg/m³).

5.5 Other Test Equipment

5.5.1 Device Holder for Transmitters

In combination with the Generic Twin Phantom V3.0, the Mounting Device (POM) enables the rotation of the mounted transmitter in spherical coordinates whereby the rotation points is the ear opening. The devices can be easily, accurately, and repeatably positioned according to the FCC and CENELEC specifications. The device holder can be locked at different phantom locations (left head, right head, flat phantom).

5.5.2 Phantom

The Generic Twin Phantom is constructed of a fiberglass shell integrated in a wooden table. The shape of the shell is based on data from an anatomical study designed to determine the maximum exposure in at least 90% of all users. It enables the dosimetric evaluation of left and right hand phone usage as well as body mounted usage at the flat phantom region. A cover prevents the evaporation of the liquid. Reference markings on the Phantom allow the complete setup of all predefined phantom positions and measurement grids by manually teaching three points in the robot.

Shell Thickness	2±0.1 mm
Filling Volume	Approx. 20 liters
Dimensions	810 x 1000 x 500 mm (H x L x W)
Available	Special



Picture 6: Generic Twin Phantom

5.6 Equivalent Tissues

The liquid used for the frequency range of 800-2000 MHz consisted of water, sugar, salt and Cellulose. The liquid has been previously proven to be suited for worst-case. The Table 1 and 2 shows the detail solution. It's satisfying the latest tissue dielectric parameters requirements proposed by the IEEE 1528.

Table 1. Composition of the Head Tissue Equivalent Matter

MIXTURE %	FREQUENCY 850MHz		
Water	41.45		
Sugar	56.0		
Salt	1.45		
Preventol	0.1		
Cellulose	1.0		
Dielectric Parameters Target Value	f=850MHz	$\epsilon=41.5$	$\sigma=0.90$

MIXTURE %	FREQUENCY 1900MHz
Water	55.242
Glycol monobutyl	44.452
Salt	0.306
Dielectric Parameters Target Value	f=1900MHz $\epsilon=40.0$ $\sigma=1.40$

Table 2. Composition of the Body Tissue Equivalent Matter

MIXTURE %	FREQUENCY 850MHz
Water	52.5
Sugar	45.0
Salt	1.4
Preventol	0.1
Cellulose	1.0
Dielectric Parameters Target Value	f=850MHz $\epsilon=55.2$ $\sigma=0.97$
MIXTURE %	FREQUENCY 1900MHz
Water	69.91
Glycol monobutyl	29.96
Salt	0.13
Dielectric Parameters Target Value	f=1900MHz $\epsilon=53.3$ $\sigma=1.52$

5.7 System Specifications

5.7.1 Robotic System Specifications

Specifications

Positioner: Stäubli Unimation Corp. Robot Model: RX90L

Repeatability: ± 0.02 mm

No. of Axis: 6

Data Acquisition Electronic (DAE) System

Cell Controller

Processor: Pentium III

Clock Speed: 800 MHz

Operating System: Windows 2000

Data Converter

Features: Signal Amplifier, multiplexer, A/D converter, and control logic

Software: DASY4 software

Connecting Lines: Optical downlink for data and status info.
Optical uplink for commands and clock

6 CONDUCTED OUTPUT POWER MEASUREMENT

6.1 Summary

During the process of testing, the EUT was controlled via Rhode & Schwarz Digital Radio Communication tester (CMU-200) to ensure the maximum power transmission and proper

modulation. This result contains conducted output power and ERP for the EUT. In all cases, the measured peak output power should be greater and within 5% than EMI measurement.

6.2 Conducted Power

6.2.1 Measurement Methods

The EUT was set up for the maximum output power. The channel power was measured with Agilent Spectrum Analyzer E4440A. These measurements were done at low, middle and high channels.

6.2.2 Measurement result

Table 3: Conducted Power Measurement Results (OT-660A)

GSM 850MHZ	Conducted Power (dBm)		
	Channel 251(848.8MHz)	Channel 190(836.6MHz)	Channel 128(824.2MHz)
	32.05	31.82	32.60
GSM 1900MHZ	Conducted Power (dBm)		
	Channel 810(1909.8MHz)	Channel 661(1880MHz)	Channel 512(1850.2MHz)
	28.22	28.55	29.23

Table 4: Conducted Power Measurement Results (ELLE 09A)

GSM 850MHZ	Conducted Power (dBm)		
	Channel 251(848.8MHz)	Channel 190(836.6MHz)	Channel 128(824.2MHz)
	32.05	31.82	32.60
GSM 1900MHZ	Conducted Power (dBm)		
	Channel 810(1909.8MHz)	Channel 661(1880MHz)	Channel 512(1850.2MHz)
	28.22	28.55	29.23

6.2.3 Power Drift

To control the output power stability during the SAR test, DASY4 system calculates the power drift by measuring the E-field at the same location at the beginning and at the end of the measurement for each test position. These drift values can be found in Table 7 to Table 11 labeled as: (Power Drift [dB]). This ensures that the power drift during one measurement is within 5%.

7 TEST RESULTS

7.1 Dielectric Performance

Table 5: Dielectric Performance of Head Tissue Simulating Liquid

Measurement is made at temperature 23.3 °C and relative humidity 49%.			
Liquid temperature during the test: 22.5°C			
Measurement Date : 850 MHz <u>May 25,2009</u> 1900 MHz <u>May 26,2009</u>			
/	Frequency	Permittivity ϵ	Conductivity σ (S/m)
Target value	850 MHz	41.5	0.90
	1900 MHz	40.0	1.40
Measurement value (Average of 10 tests)	850 MHz	40.3	0.92
	1900 MHz	39.2	1.42

Measurement is made at temperature 23.5 °C and relative humidity 38%.			
Liquid temperature during the test: 22.1°C			
Measurement Date : 850 MHz September 3, 2009 1900 MHz September 4, 2009			
/	Frequency	Permittivity ϵ	Conductivity σ (S/m)
Target value	850 MHz	41.5	0.90
	1900 MHz	40.0	1.40
Measurement value (Average of 10 tests)	850 MHz	40.5	0.91
	1900 MHz	40.5	1.39

Table 6: Dielectric Performance of Body Tissue Simulating Liquid

Measurement is made at temperature 23.3 °C and relative humidity 49%.			
Liquid temperature during the test: 22.5°C			
Measurement Date : 850 MHz May 25,2009 1900 MHz May 26,2009			
/	Frequency	Permittivity ϵ	Conductivity σ (S/m)
Target value	850 MHz	55.2	0.97
	1900 MHz	53.3	1.52
Measurement value (Average of 10 tests)	850 MHz	53.7	1.01
	1900 MHz	52.3	1.56
Measurement is made at temperature 23.5 °C and relative humidity 38%.			
Liquid temperature during the test: 22.1°C			
Measurement Date : 850 MHz September 3, 2009 1900 MHz September 4, 2009			
/	Frequency	Permittivity ϵ	Conductivity σ (S/m)
Target value	850 MHz	55.2	0.97
	1900 MHz	53.3	1.52
Measurement value (Average of 10 tests)	850 MHz	53.9	1.01
	1900 MHz	52.6	1.53

7.2 System Validation

Table 7: System Validation

Measurement is made at temperature 23.3 °C and relative humidity 49%.							
Liquid temperature during the test: 22.5°C							
Measurement Date : 850 MHz May 25,2009 1900 MHz May 26,2009							
Liquid parameters	Dipole calibration	Frequency		Permittivity ϵ		Conductivity σ (S/m)	
		835 MHz	1900 MHz	39.9	38.9	0.88	1.38
	Target value	835 MHz	1900 MHz	40.4	39.2	0.90	1.42
		Actual Measurement value	835 MHz	1900 MHz	39.2	39.2	1.42
	Verification results	Frequency	Target value (W/kg)		Measured value (W/kg)		Deviation
10 g			1 g	10 g	1 g	10 g	1 g
Average			Average	Average	Average	Average	Average

	835 MHz	1.60	2.48	1.62	2.50	1.25%	0.81%	
	1900 MHz	5.09	9.73	5.27	9.91	3.54%	1.85%	
Measurement is made at temperature 23.5 °C and relative humidity 38%. Liquid temperature during the test: 22.1°C Measurement Date : 850 MHz September 3, 2009 1900 MHz September 4, 2009								
Liquid parameters	Dipole calibration Target value	Frequency		Permittivity ϵ		Conductivity σ (S/m)		
		835 MHz	1900 MHz	39.9	38.9	0.88	1.38	
	Actual Measurement value	835 MHz	1900 MHz	40.2	40.5	0.91	1.39	
	Verification results	Frequency	Target value (W/kg)		Measured value (W/kg)		Deviation	
10 g Average			1 g Average	10 g Average	1 g Average	10 g Average	1 g Average	
835 MHz		1.60	2.48	1.65	2.55	3.13%	2.82%	
1900 MHz		5.09	9.73	5.22	9.90	2.55%	1.75%	

Note: Target values are the data of the dipole validation results, please check Annex F for the Dipole Calibration Certificate.

7.3 Summary of Measurement Results (Results in No.2009SAR0030)

Table 8: SAR Values (850MHz-Head)

Limit of SAR (W/kg)	10 g Average	1 g Average	Power Drift (dB)
	2.0	1.6	
Test Case	Measurement Result (W/kg)		
	10 g Average	1 g Average	
Left hand, Touch cheek, Top frequency(See Fig.1)	0.477	0.821	0.141
Left hand, Touch cheek, Mid frequency(See Fig.3)	0.396	0.672	0.116
Left hand, Touch cheek, Bottom frequency(See Fig.4)	0.354	0.597	0.118
Left hand, Tilt 15 Degree, Top frequency(See Fig.5)	0.318	0.434	-0.129
Left hand, Tilt 15 Degree, Mid frequency(See Fig.6)	0.201	0.274	-0.169
Left hand, Tilt 15 Degree, Bottom frequency(See Fig.7)	0.184	0.249	-0.050
Right hand, Touch cheek, Top frequency(See Fig.8)	0.393	0.588	-0.131
Right hand, Touch cheek, Mid frequency(See Fig.9)	0.284	0.423	0.123
Right hand, Touch cheek, Bottom frequency(See Fig.10)	0.259	0.365	-0.182
Right hand, Tilt 15 Degree, Top frequency(See Fig.11)	0.331	0.451	0.070
Right hand, Tilt 15 Degree, Mid frequency(See Fig.12)	0.211	0.287	0.001
Right hand, Tilt 15 Degree, Bottom frequency(See Fig.13)	0.195	0.263	-0.152

Table 9: SAR Values (850MHz-Body)

Limit of SAR (W/kg)	10 g Average	1g Average	Power Drift (dB)
	2.0	1.6	
Test Case	Measurement Result (W/kg)		Power Drift (dB)
	10 g Average	1 g Average	
Body, Towards Ground, Top frequency with GPRS(See Fig.14)	0.749	1.06	-0.118
Body, Towards Ground, Mid frequency with GPRS (See Fig.15)	0.688	0.964	0.000
Body, Towards Ground, Bottom frequency with GPRS(See Fig.16)	0.819	1.13	0.027
Body, Towards Ground, Mid frequency with Headset(See Fig.18)	0.456	0.628	0.021

Table 10: SAR Values (1900MHz-Head)

Limit of SAR (W/kg)	10 g Average	1 g Average	Power Drift (dB)
	2.0	1.6	
Test Case	Measurement Result (W/kg)		Power Drift (dB)
	10 g Average	1 g Average	
Left hand, Touch cheek, Top frequency(See Fig.19)	0.632	1.16	-0.145
Left hand, Touch cheek, Mid frequency(See Fig.21)	0.580	1.06	-0.108
Left hand, Touch cheek, Bottom frequency(See Fig.22)	0.554	0.992	-0.118
Left hand, Tilt 15 Degree, Top frequency(See Fig.23)	0.124	0.206	-0.070
Left hand, Tilt 15 Degree, Mid frequency(See Fig.24)	0.136	0.224	0.010
Left hand, Tilt 15 Degree, Bottom frequency(See Fig.25)	0.136	0.221	-0.080
Right hand, Touch cheek, Top frequency(See Fig.26)	0.424	0.713	0.025
Right hand, Touch cheek, Mid frequency(See Fig.27)	0.408	0.683	-0.118
Right hand, Touch cheek, Bottom frequency(See Fig.28)	0.391	0.648	-0.188
Right hand, Tilt 15 Degree, Top frequency(See Fig.29)	0.152	0.253	-0.191
Right hand, Tilt 15 Degree, Mid frequency(See Fig.30)	0.155	0.255	-0.117
Right hand, Tilt 15 Degree, Bottom frequency(See Fig.31)	0.156	0.254	-0.192

Table 11: SAR Values (1900MHz-Body)

Limit of SAR (W/kg)	10 g Average	1g Average	Power Drift (dB)
	2.0	1.6	
Test Case	Measurement Result (W/kg)		
	10 g Average	1 g Average	
Body, Towards Ground, Top frequency with GPRS(See Fig.32)	0.210	0.326	-0.190
Body, Towards Ground, Mid frequency with GPRS(See Fig.34)	0.132	0.201	-0.174
Body, Towards Ground, Bottom frequency with GPRS (See Fig.35)	0.110	0.169	0.156
Body, Towards Ground, Mid frequency with Headset (See Fig.36)	0.102	0.170	0.080

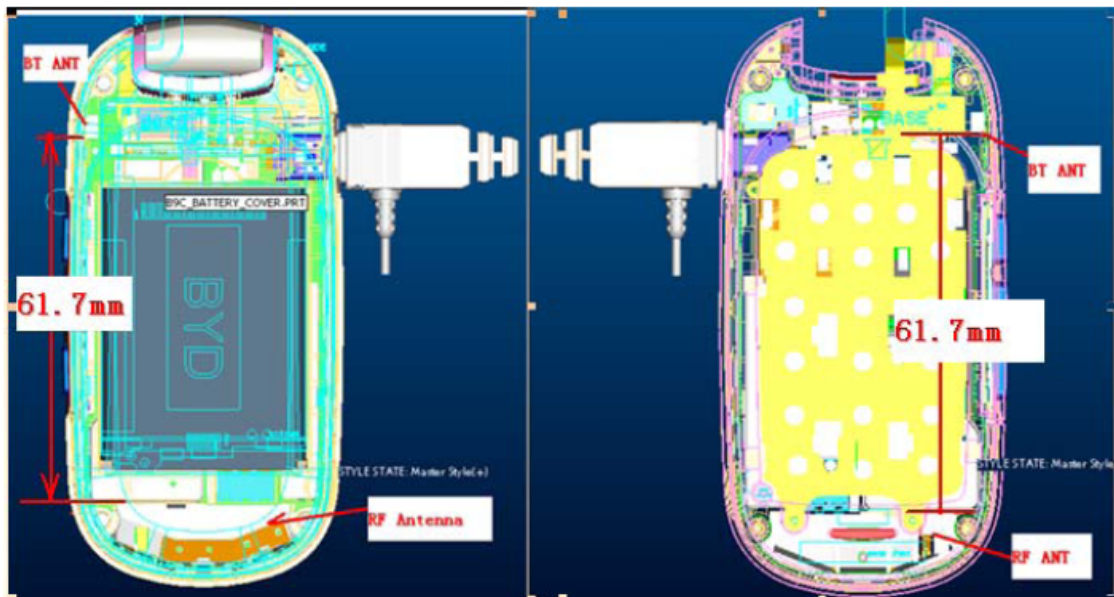
7.4 Summary of Measurement Results (worst case spots check results)

Table 12: SAR Values

Limit of SAR (W/kg)	10 g Average	1 g Average	Power Drift (dB)
	2.0	1.6	
Test Case	Measurement Result (W/kg)		
	10 g Average	1 g Average	
850 Left hand, Touch cheek, Top frequency(See Fig.37)	0.437	0.780	-0.168
850 Body, Towards Ground, Bottom frequency with GPRS(See Fig.39)	0.652	0.895	0.012
1900 Left hand, Touch cheek, Top frequency(See Fig.41)	0.600	1.09	0.184
1900 Body, Towards Ground, Top frequency with GPRS(See Fig.43)	0.165	0.260	-0.031

7.5 Summary of Measurement Results (Bluetooth function)

The distance between BT antenna and GSM antenna is >5cm. The location of the antennas inside mobile phone is shown below:



The output power of BT antenna is as following:

Channel	Ch 0 2402 MHz	Ch 39 2441 Mhz	Ch 78 2480 MHz
Peak Conducted Output Power(dBm)	-0.23	-1.57	-1.26

According to the output power measurement result and the distance between the two antennas, we can draw the conclusion that: stand-alone SAR and simultaneous transmission SAR are not required for BT transmitter, because the output power of BT transmitter is $\leq 2P_{Ref}$ and its antenna is $>5\text{cm}$ from other antenna

7.6 Conclusion

Localized Specific Absorption Rate (SAR) of this portable wireless device has been measured in all cases requested by the relevant standards cited in Clause 4.2 of this report. Maximum localized SAR is below exposure limits specified in the relevant standards cited in Clause 4.1 of this test report.

8 Measurement Uncertainty

SN	a	Type	c	d	e = f(d,k)	f	h = c x f / e	k
	Uncertainty Component		Tol. (± %)	Prob. Dist.	Div.	c _i (1 g)	1 g u _i (±%)	v _i
1	System repetivity	A	0.5	N	1	1	0.5	9
Measurement System								
2	Probe Calibration	B	5	N	2	1	2.5	∞
3	Axial Isotropy	B	4.7	R	√3	(1-cp) ^{1/2}	4.3	∞
4	Hemispherical Isotropy	B	9.4	R	√3	√c _p		
5	Boundary Effect	B	0.4	R	√3	1	0.23	∞

6	Linearity	B	4.7	R	$\sqrt{3}$	1	2.7	∞
7	System Detection Limits	B	1.0	R	$\sqrt{3}$	1	0.6	∞
8	Readout Electronics	B	1.0	N	1	1	1.0	∞
9	RF Ambient Conditions	B	3.0	R	$\sqrt{3}$	1	1.73	∞
10	Probe Positioner Mechanical Tolerance	B	0.4	R	$\sqrt{3}$	1	0.2	∞
11	Probe Positioning with respect to Phantom Shell	B	2.9	R	$\sqrt{3}$	1	1.7	∞
12	Extrapolation, interpolation and Integration Algorithms for Max. SAR Evaluation	B	3.9	R	$\sqrt{3}$	1	2.3	∞
Test sample Related								
13	Test Sample Positioning	A	4.9	N	1	1	4.9	N-1
14	Device Holder Uncertainty	A	6.1	N	1	1	6.1	N-1
15	Output Power Variation - SAR drift measurement	B	5.0	R	$\sqrt{3}$	1	2.9	∞
Phantom and Tissue Parameters								
16	Phantom Uncertainty (shape and thickness tolerances)	B	1.0	R	$\sqrt{3}$	1	0.6	∞
17	Liquid Conductivity - deviation from target values	B	5.0	R	$\sqrt{3}$	0.64	1.7	∞
18	Liquid Conductivity-measurement uncertainty	B	5.0	N	1	0.64	1.7	M
19	Liquid Permittivity - deviation from target values	B	5.0	R	$\sqrt{3}$	0.6	1.7	∞
20	Liquid Permittivity-measurement uncertainty	B	5.0	N	1	0.6	1.7	M
Combined Standard Uncertainty				RSS			11.25	
Expanded Uncertainty (95% CONFIDENCE INTERVAL)				K=2			22.5	

9 MAIN TEST INSTRUMENTS

Table 13: List of Main Instruments

No.	Name	Type	Serial Number	Calibration Date	Valid Period
01	Network analyzer	HP 8753E	US38433212	August 29,2009	One year
02	Power meter	NRVD	101253	June 19, 2009	One year
03	Power sensor	NRV-Z5	100333		
04	Power sensor	NRV-Z6	100011	September 1, 2009	One year
05	Signal Generator	E4433B	US37230472	September 1, 2009	One Year
06	Amplifier	VTL5400	0505	No Calibration Requested	
07	BTS	CMU 200	105948	August 14, 2009	One year
08	E-field Probe	SPEAG ES3DV3	3149	October 1, 2008	One year
09	DAE	SPEAG DAE4	771	November 20, 2008	One year
10	Dipole Validation Kit	SPEAG D835V2	443	February 18, 2009	Two years
11	Dipole Validation Kit	SPEAG D1900V2	541	February 19, 2009	Two years

ANNEX A MEASUREMENT PROCESS

The evaluation was performed with the following procedure:

Step 1: Measurement of the SAR value at a fixed location above the reference point was measured and was used as a reference value for assessing the power drop.

Step 2: The SAR distribution at the exposed side of the phantom was measured at a distance of 3.9 mm from the inner surface of the shell. The area covered the entire dimension of the flat phantom and the horizontal grid spacing was 10 mm x 10 mm. Based on this data, the area of the maximum absorption was determined by spline interpolation.

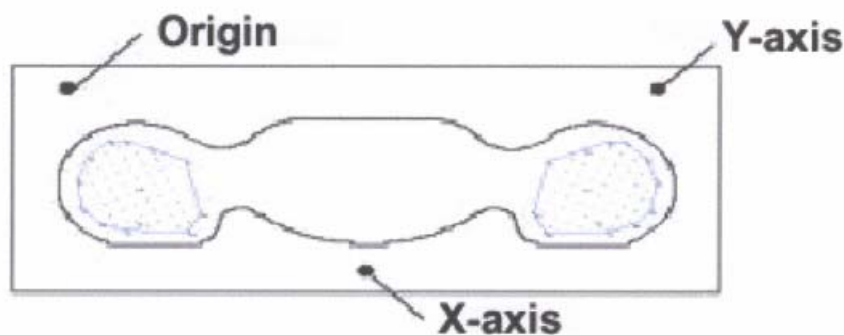
Step 3: Around this point, a volume of 30 mm x 30 mm x 30 mm was assessed by measuring 7 x 7 x 7 points. On this basis of this data set, the spatial peak SAR value was evaluated with the following procedure:

a. The data at the surface were extrapolated, since the center of the dipoles is 2.7 mm away from the tip of the probe and the distance between the surface and the lowest measuring point is 1.2 mm. The extrapolation was based on a least square algorithm. A polynomial of the fourth order was calculated through the points in z-axis. This polynomial was then used to evaluate the points between the surface and the probe tip.

b. The maximum interpolated value was searched with a straightforward algorithm. Around this maximum the SAR values averaged over the spatial volumes (1g or 10g) were computed using the 3D-Spline interpolation algorithm. The 3D-spline is composed of three one-dimensional splines with the "Not a knot"-condition (in x ~ y and z-directions). The volume was integrated with the trapezoidal algorithm. One thousand points (10 x 10 x 10) were interpolated to calculate the average.

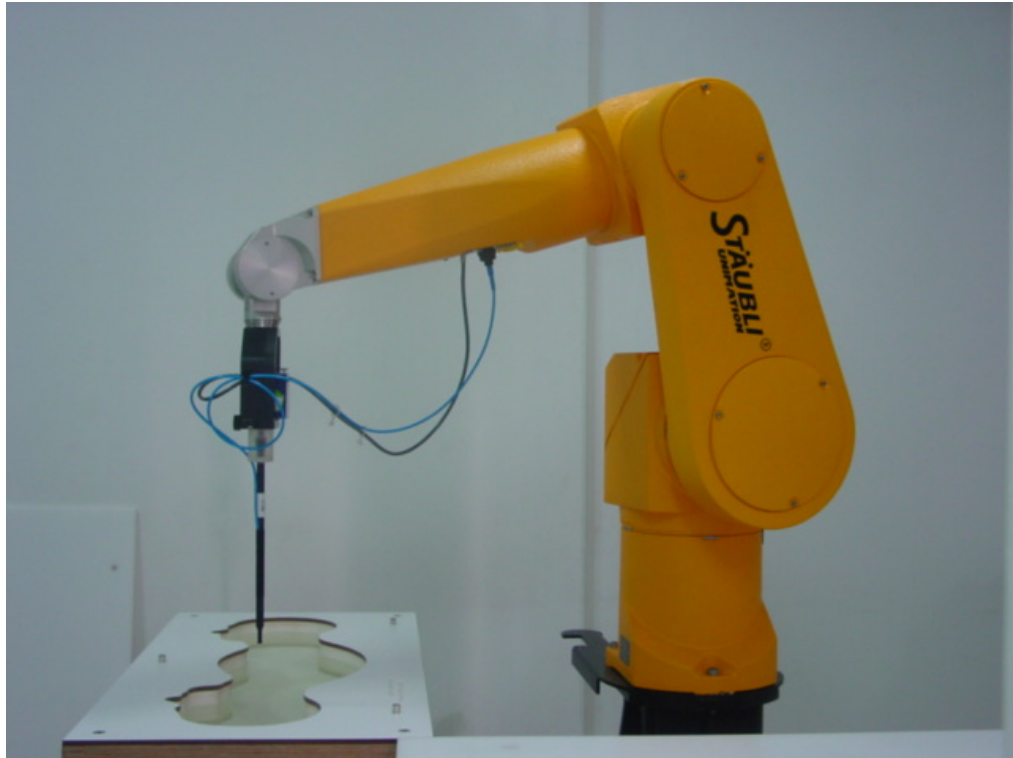
c. All neighboring volumes were evaluated until no neighboring volume with a higher average value was found.

Step 4: Re-measurement the SAR value at the same location as in Step 1. If the value changed by more than 5%, the evaluation is repeated.

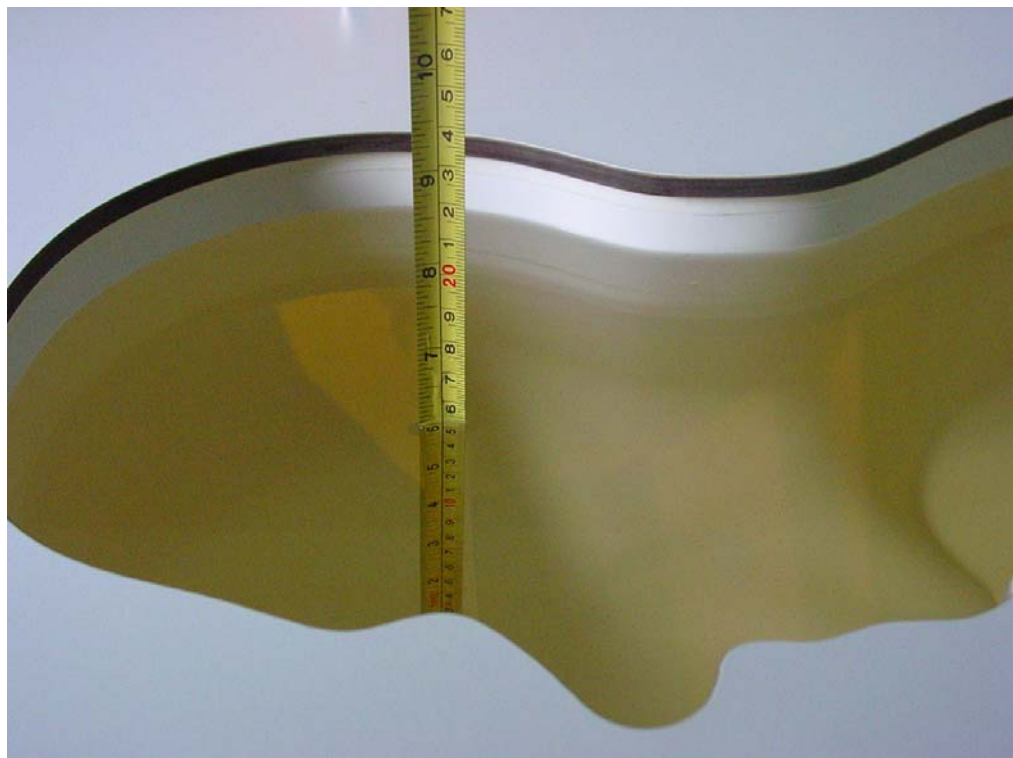


Picture A: SAR Measurement Points in Area Scan

ANNEX B TEST LAYOUT



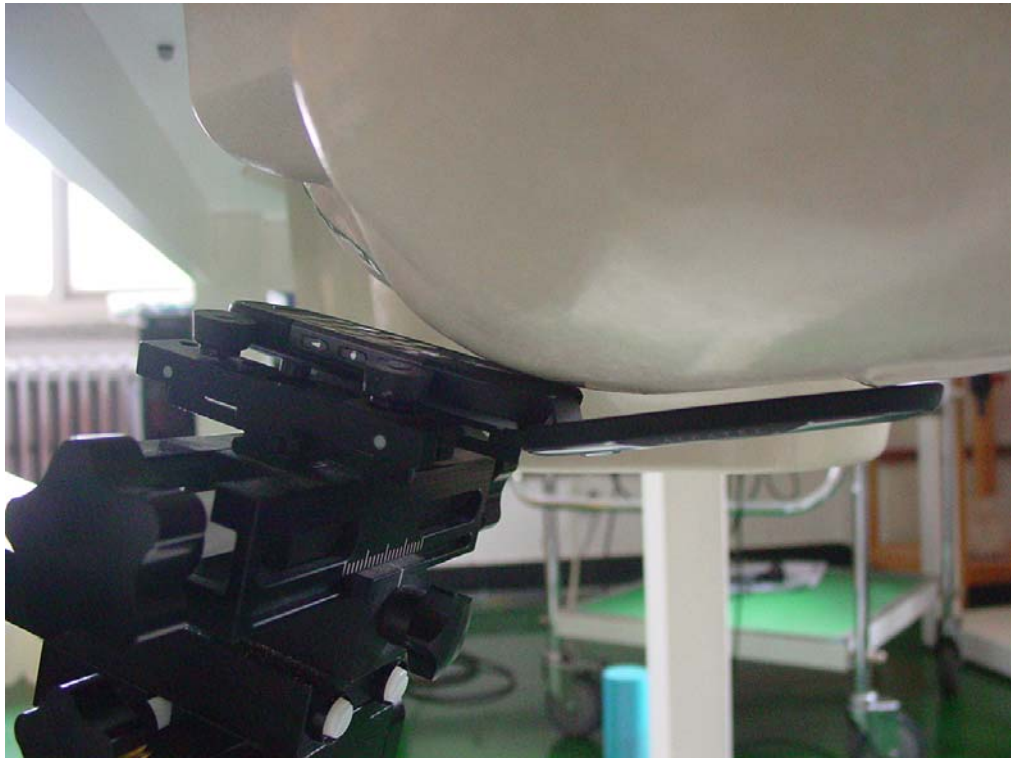
Picture B1: Specific Absorption Rate Test Layout



Picture B2: Liquid depth in the Flat Phantom (850 MHz)



Picture B3 Liquid depth in the Flat Phantom (1900MHz)



Picture B4: Left Hand Touch Cheek Position



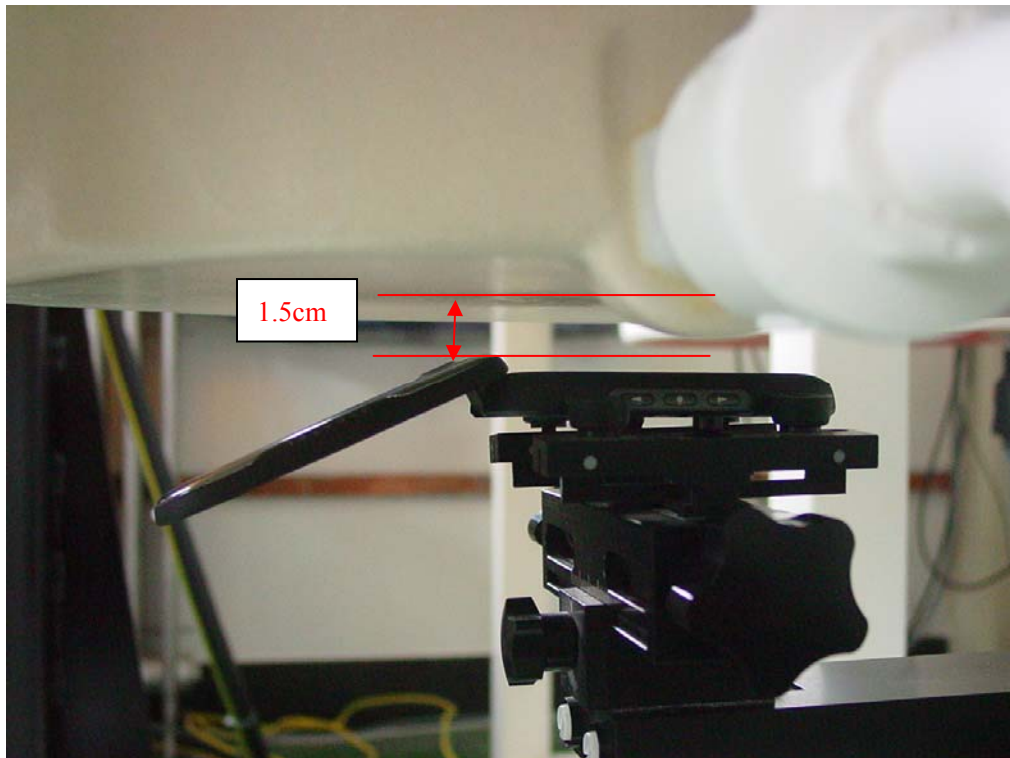
Picture B5: Left Hand Tilt 15° Position



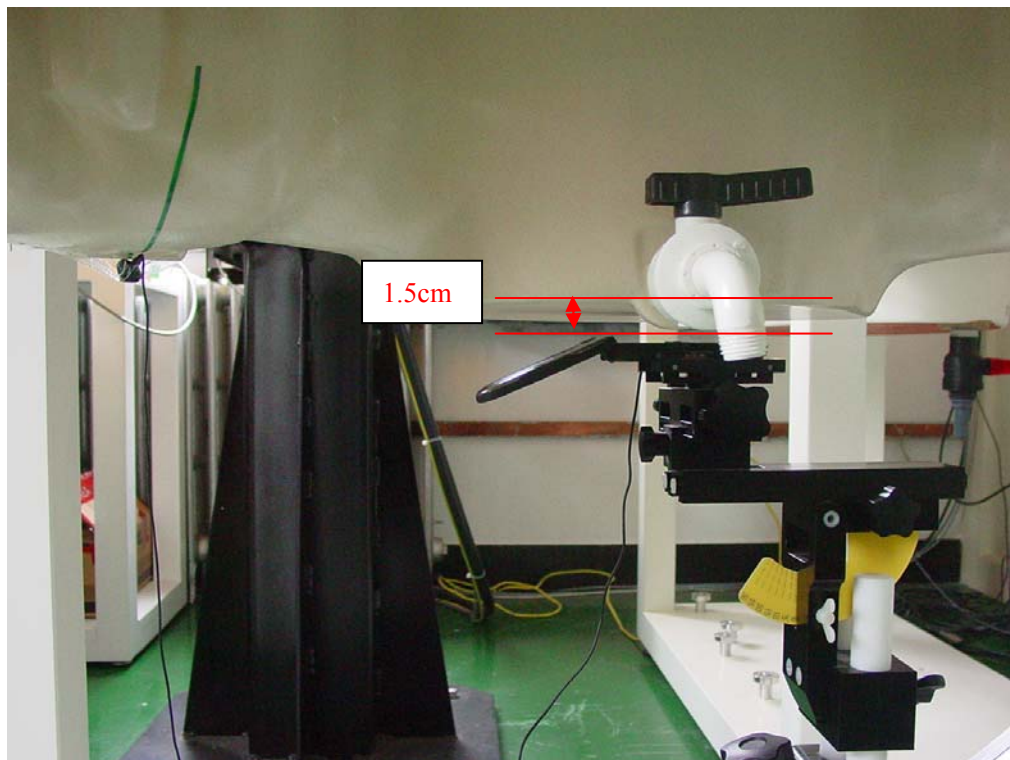
Picture B6: Right Hand Touch Cheek Position



Picture B7: Right Hand Tilt 15° Position



Picture B8: Body-worn Position (towards ground, the distance from handset to the bottom of the Phantom is 1.5cm)



Picture B9: Body-worn Position with Headset (towards ground, the distance from handset to the bottom of the Phantom is 1.5cm)

ANNEX C GRAPH RESULTS

850 Left Cheek High

Date/Time: 2009-5-25 8:04:13

Electronics: DAE4 Sn771

Medium: Head 850

Medium parameters used (interpolated): $f = 848.8$ MHz; $\sigma = 0.92$ mho/m; $\epsilon_r = 40.3$; $\rho = 1000$ kg/m³

Ambient Temperature: 23.3°C Liquid Temperature: 22.5°C

Communication System: GSM 850 Frequency: 848.8 MHz Duty Cycle: 1:8.3

Probe: ES3DV3 - SN3149 ConvF(6.56, 6.56, 6.56)

Cheek High/Area Scan (51x121x1): Measurement grid: dx=10mm, dy=10mm

Maximum value of SAR (interpolated) = 0.878 mW/g

Cheek High/Zoom Scan (7x7x7)/Cube 0: Measurement grid: dx=5mm, dy=5mm, dz=5mm

Reference Value = 2.52 V/m; Power Drift = 0.141 dB

Peak SAR (extrapolated) = 1.77 W/kg

SAR(1 g) = 0.821 mW/g; SAR(10 g) = 0.477 mW/g

Maximum value of SAR (measured) = 0.873 mW/g

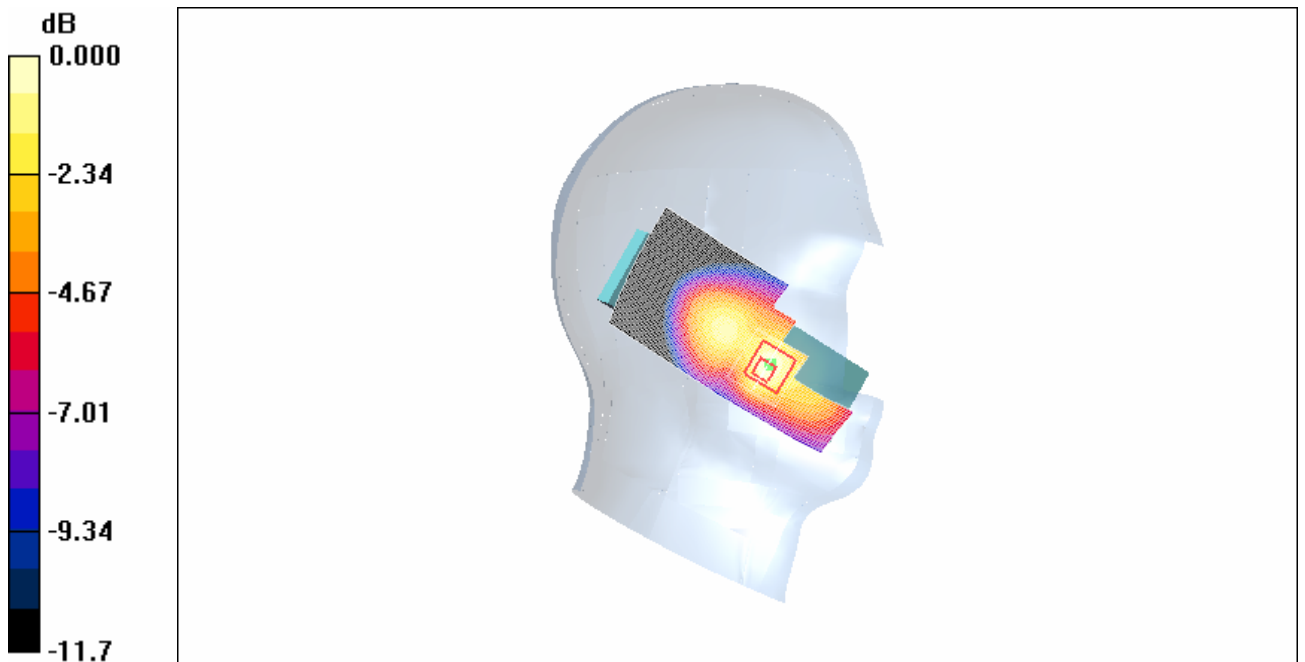


Fig. 1 850MHz CH251

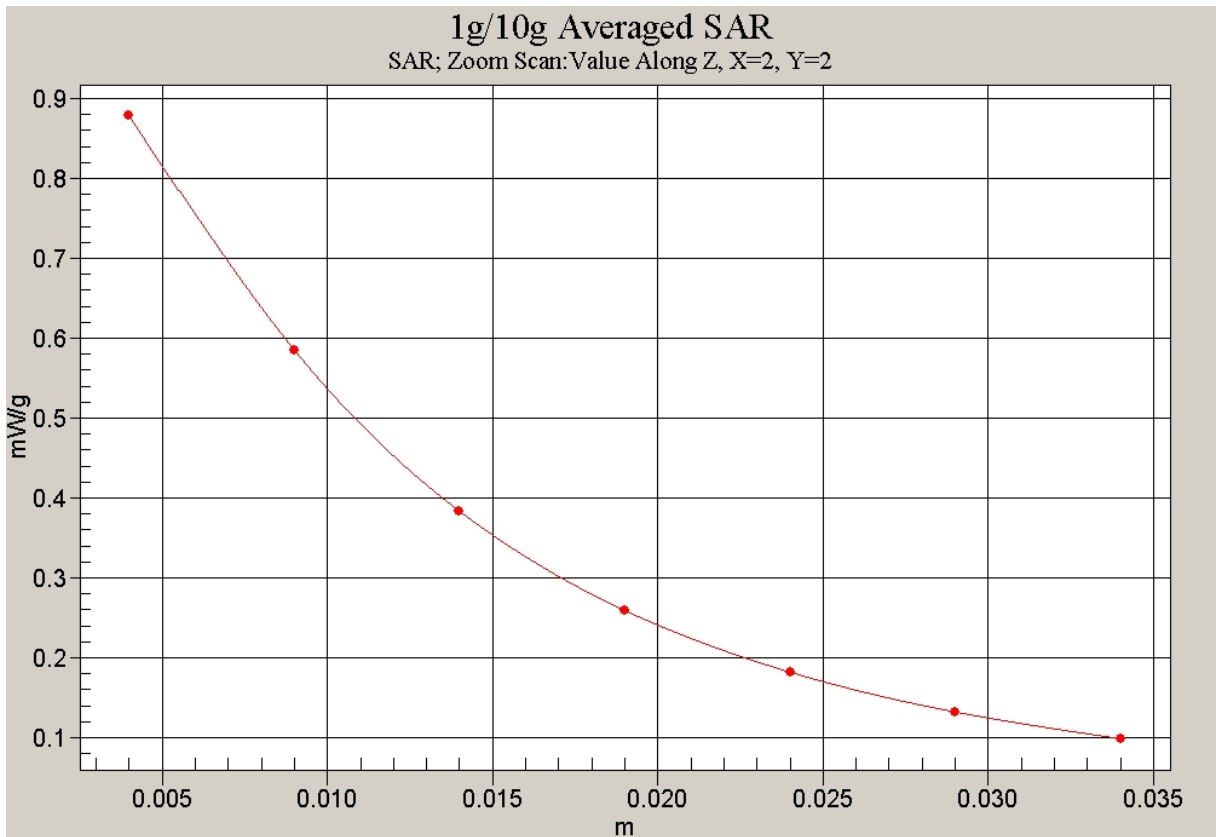


Fig. 2 Z-Scan at power reference point (850 MHz CH251)

850 Left Cheek Middle

Date/Time: 2009-5-25 8:18:35

Electronics: DAE4 Sn771

Medium: Head 850

Medium parameters used (interpolated): $f = 836.6$ MHz; $\sigma = 0.908$ mho/m; $\epsilon_r = 40.4$; $\rho = 1000$ kg/m³

Ambient Temperature: 23.3°C Liquid Temperature: 22.5°C

Communication System: GSM 850 Frequency: 836.6 MHz Duty Cycle: 1:8.3

Probe: ES3DV3 - SN3149 ConvF(6.56, 6.56, 6.56)

Cheek Middle/Area Scan (51x121x1): Measurement grid: dx=10mm, dy=10mm

Maximum value of SAR (interpolated) = 0.761 mW/g

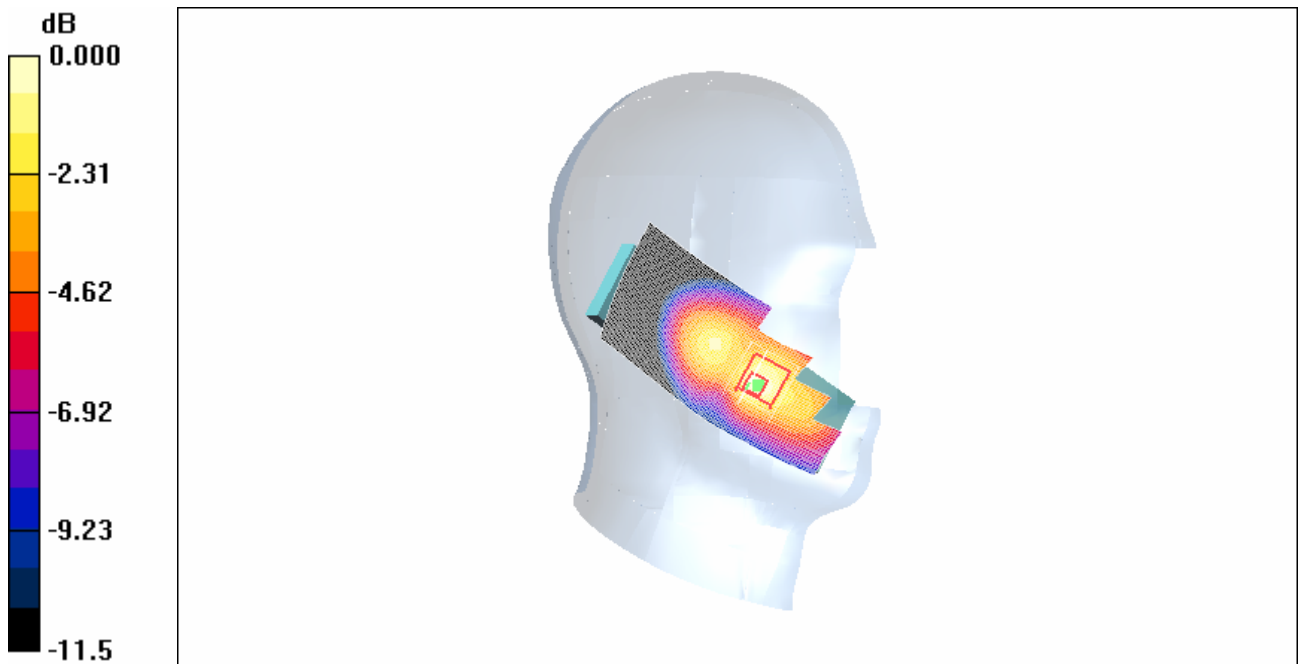
Cheek Middle/Zoom Scan (7x7x7)/Cube 0: Measurement grid: dx=5mm, dy=5mm, dz=5mm

Reference Value = 2.14 V/m; Power Drift = 0.116 dB

Peak SAR (extrapolated) = 1.39 W/kg

SAR(1 g) = 0.672 mW/g; SAR(10 g) = 0.396 mW/g

Maximum value of SAR (measured) = 0.724 mW/g



0 dB = 0.724mW/g

Fig. 3 850 MHz CH190

850 Left Cheek Low

Date/Time: 2009-5-25 8:32:47

Electronics: DAE4 Sn771

Medium: Head 850

Medium parameters used: $f = 825 \text{ MHz}$; $\sigma = 0.896 \text{ mho/m}$; $\epsilon_r = 40.4$; $\rho = 1000 \text{ kg/m}^3$

Ambient Temperature: 23.3°C Liquid Temperature: 22.5°C

Communication System: GSM 850 Frequency: 824.2 MHz Duty Cycle: 1:8.3

Probe: ES3DV3 - SN3149 ConvF(6.56, 6.56, 6.56)

Cheek Low/Area Scan (51x121x1): Measurement grid: $dx=10\text{mm}$, $dy=10\text{mm}$

Maximum value of SAR (interpolated) = 0.683 mW/g

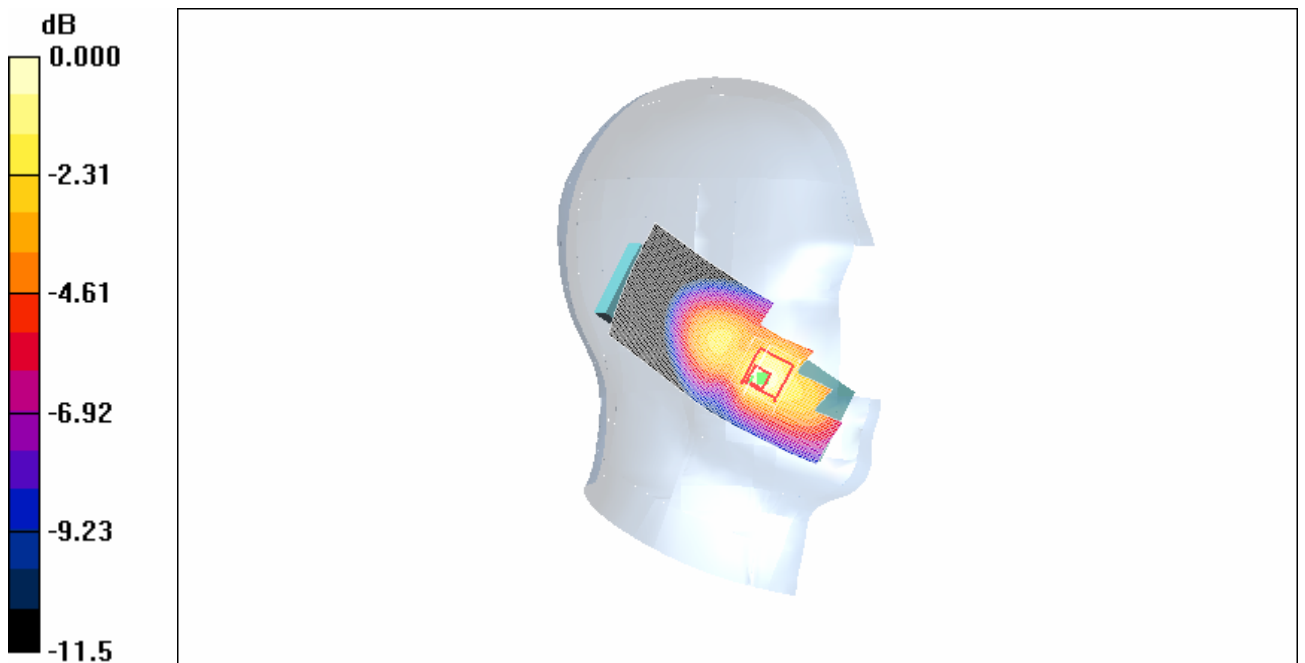
Cheek Low/Zoom Scan (7x7x7)/Cube 0: Measurement grid: $dx=5\text{mm}$, $dy=5\text{mm}$, $dz=5\text{mm}$

Reference Value = 1.76 V/m ; Power Drift = 0.118 dB

Peak SAR (extrapolated) = 1.24 W/kg

SAR(1 g) = 0.597 mW/g ; SAR(10 g) = 0.354 mW/g

Maximum value of SAR (measured) = 0.633 mW/g



0 dB = 0.633mW/g

Fig. 4 850 MHz CH128

850 Left Tilt High

Date/Time: 2009-5-25 8:46:52

Electronics: DAE4 Sn771

Medium: Head 850

Medium parameters used (interpolated): $f = 848.8$ MHz; $\sigma = 0.92$ mho/m; $\epsilon_r = 40.3$; $\rho = 1000$ kg/m³

Ambient Temperature: 23.3°C Liquid Temperature: 22.5°C

Communication System: GSM 850 Frequency: 848.8 MHz Duty Cycle: 1:8.3

Probe: ES3DV3 - SN3149 ConvF(6.56, 6.56, 6.56)

Tilt High/Area Scan (51x121x1): Measurement grid: dx=10mm, dy=10mm

Maximum value of SAR (interpolated) = 0.461 mW/g

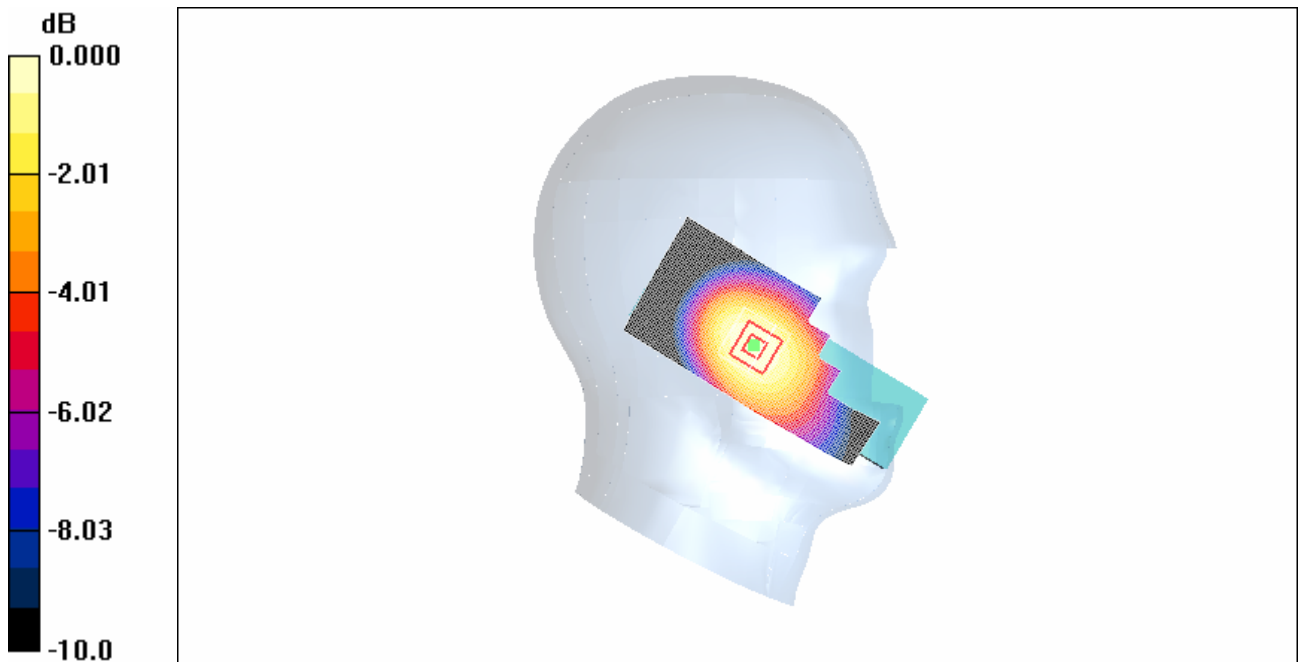
Tilt High/Zoom Scan (7x7x7)/Cube 0: Measurement grid: dx=5mm, dy=5mm, dz=5mm

Reference Value = 5.70 V/m; Power Drift = -0.129 dB

Peak SAR (extrapolated) = 0.559 W/kg

SAR(1 g) = 0.434 mW/g; SAR(10 g) = 0.318 mW/g

Maximum value of SAR (measured) = 0.449 mW/g



0 dB = 0.449mW/g

Fig.5 850 MHz CH251

850 Left Tilt Middle

Date/Time: 2009-5-25 9:01:06

Electronics: DAE4 Sn771

Medium: Head 850

Medium parameters used (interpolated): $f = 836.6$ MHz; $\sigma = 0.908$ mho/m; $\epsilon_r = 40.4$; $\rho = 1000$ kg/m³

Ambient Temperature: 23.3°C Liquid Temperature: 22.5°C

Communication System: GSM 850 Frequency: 836.6 MHz Duty Cycle: 1:8.3

Probe: ES3DV3 - SN3149 ConvF(6.56, 6.56, 6.56)

Tilt Middle/Area Scan (51x121x1): Measurement grid: dx=10mm, dy=10mm

Maximum value of SAR (interpolated) = 0.283 mW/g

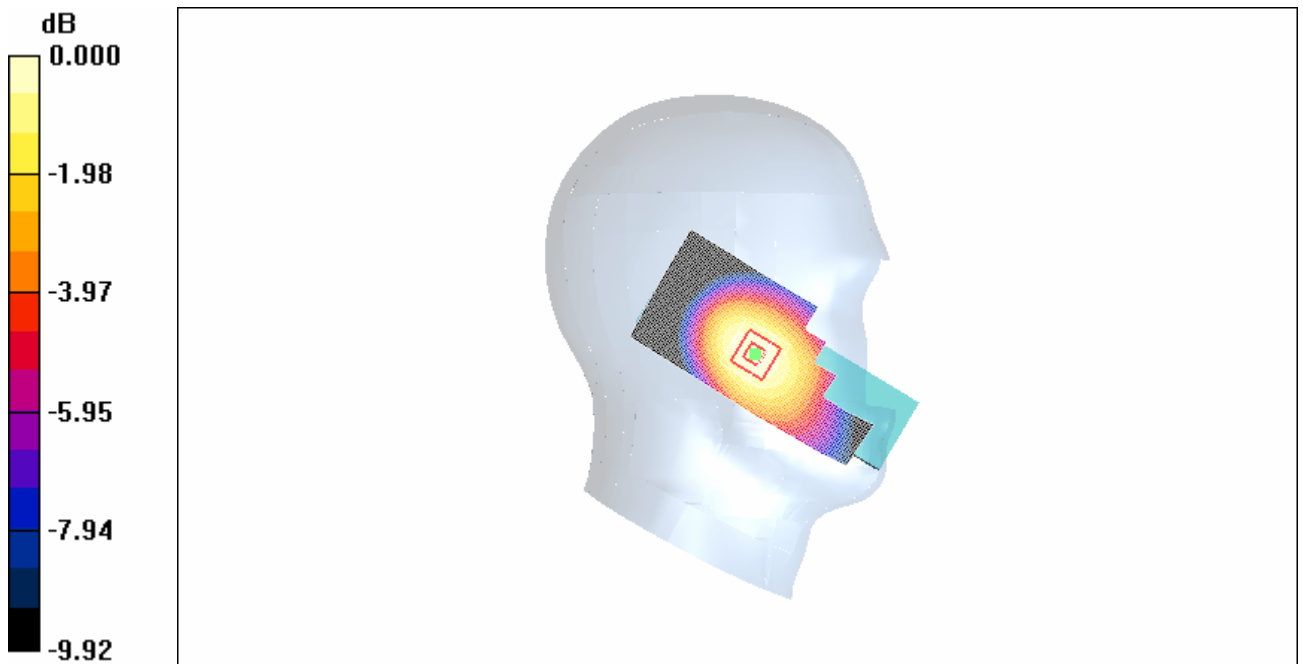
Tilt Middle/Zoom Scan (7x7x7)/Cube 0: Measurement grid: dx=5mm, dy=5mm, dz=5mm

Reference Value = 4.43 V/m; Power Drift = -0.169 dB

Peak SAR (extrapolated) = 0.351 W/kg

SAR(1 g) = 0.274 mW/g; SAR(10 g) = 0.201 mW/g

Maximum value of SAR (measured) = 0.278 mW/g



0 dB = 0.278mW/g

Fig.6 850 MHz CH190

850 Left Tilt Low

Date/Time: 2009-5-25 9:15:29

Electronics: DAE4 Sn771

Medium: Head 850

Medium parameters used: $f = 825 \text{ MHz}$; $\sigma = 0.896 \text{ mho/m}$; $\epsilon_r = 40.4$; $\rho = 1000 \text{ kg/m}^3$

Ambient Temperature: 23.3°C Liquid Temperature: 22.5°C

Communication System: GSM 850 Frequency: 824.2 MHz Duty Cycle: 1:8.3

Probe: ES3DV3 - SN3149 ConvF(6.56, 6.56, 6.56)

Tilt Low/Area Scan (51x121x1): Measurement grid: $dx=10\text{mm}$, $dy=10\text{mm}$

Maximum value of SAR (interpolated) = 0.256 mW/g

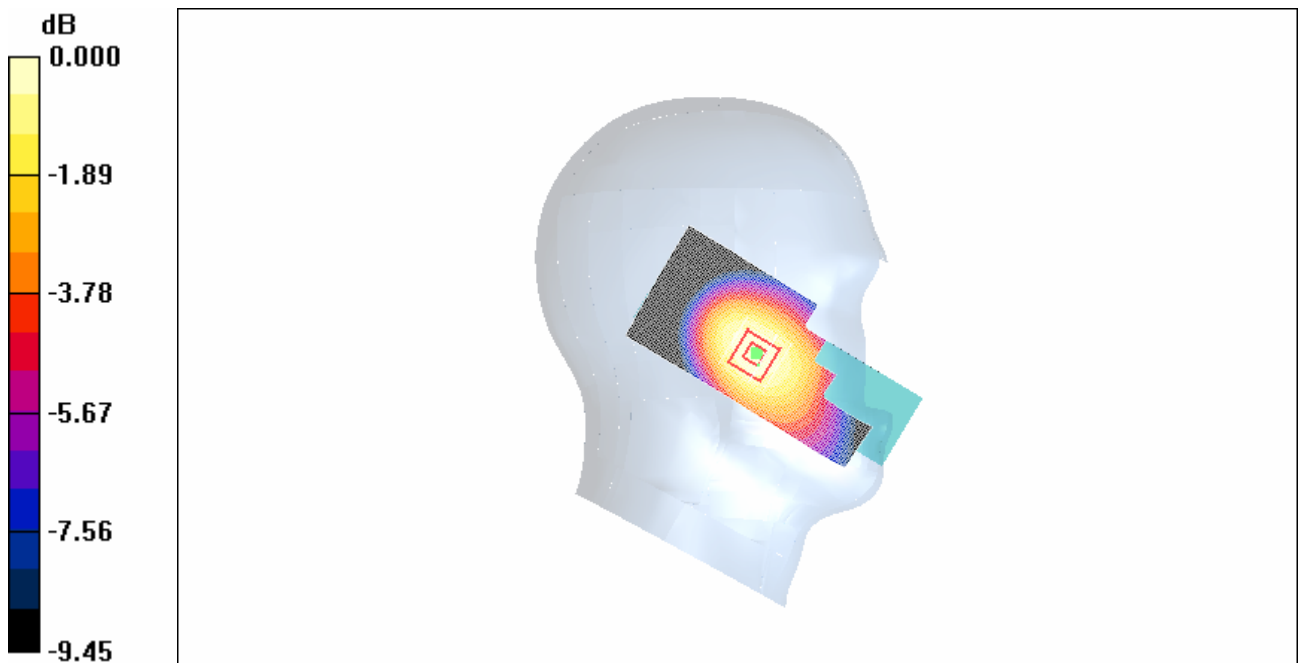
Tilt Low/Zoom Scan (7x7x7)/Cube 0: Measurement grid: $dx=5\text{mm}$, $dy=5\text{mm}$, $dz=5\text{mm}$

Reference Value = 4.13 V/m ; Power Drift = -0.050 dB

Peak SAR (extrapolated) = 0.319 W/kg

SAR(1 g) = 0.249 mW/g ; SAR(10 g) = 0.184 mW/g

Maximum value of SAR (measured) = 0.253 mW/g



0 dB = 0.253mW/g

Fig. 7 850 MHz CH128

850 Right Cheek High

Date/Time: 2009-5-25 9:29:16

Electronics: DAE4 Sn771

Medium: Head 850

Medium parameters used (interpolated): $f = 848.8$ MHz; $\sigma = 0.92$ mho/m; $\epsilon_r = 40.3$; $\rho = 1000$ kg/m³

Ambient Temperature: 23.3°C Liquid Temperature: 22.5°C

Communication System: GSM 850 Frequency: 848.8 MHz Duty Cycle: 1:8.3

Probe: ES3DV3 - SN3149 ConvF(6.56, 6.56, 6.56)

Cheek High/Area Scan (51x121x1): Measurement grid: dx=10mm, dy=10mm

Maximum value of SAR (interpolated) = 0.645 mW/g

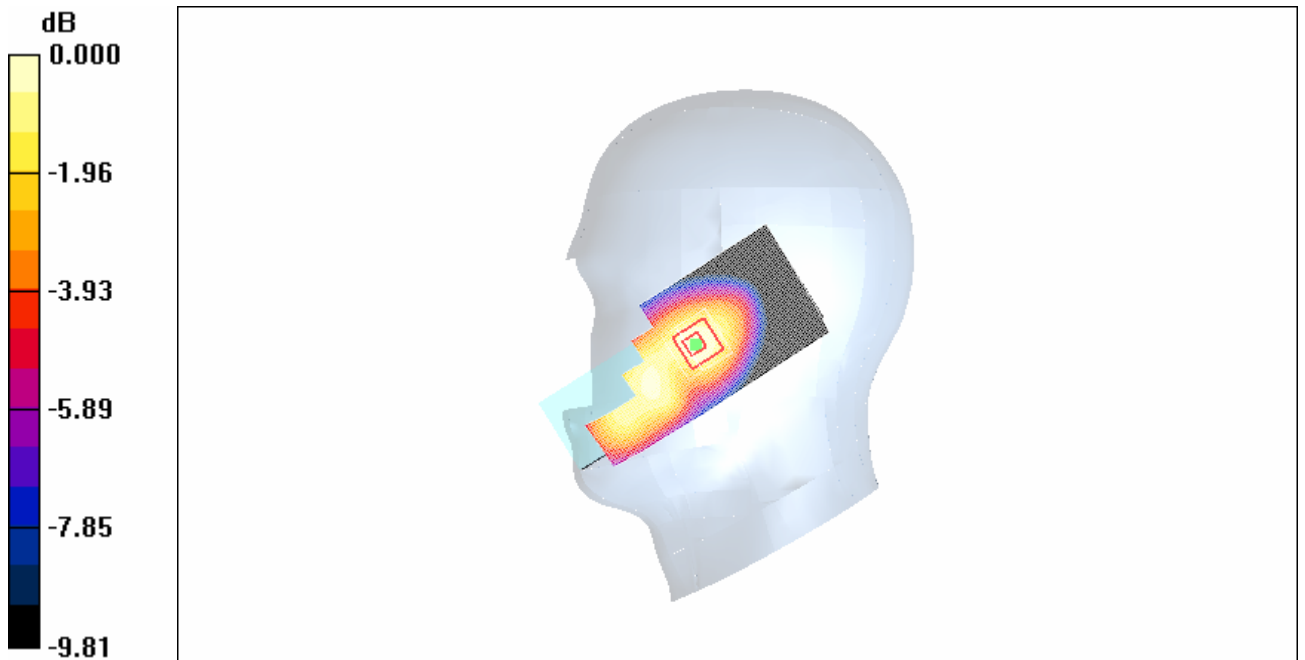
Cheek High/Zoom Scan (7x7x7)/Cube 0: Measurement grid: dx=5mm, dy=5mm, dz=5mm

Reference Value = 4.38 V/m; Power Drift = -0.131 dB

Peak SAR (extrapolated) = 0.843 W/kg

SAR(1 g) = 0.588 mW/g; SAR(10 g) = 0.393 mW/g

Maximum value of SAR (measured) = 0.605 mW/g



0 dB = 0.605mW/g

Fig. 8 850 MHz CH251

850 Right Cheek Middle

Date/Time: 2009-5-25 9:43:27

Electronics: DAE4 Sn771

Medium: Head 850

Medium parameters used (interpolated): $f = 836.6$ MHz; $\sigma = 0.908$ mho/m; $\epsilon_r = 40.4$; $\rho = 1000$ kg/m³

Ambient Temperature: 23.3°C Liquid Temperature: 22.5°C

Communication System: GSM 850 Frequency: 836.6 MHz Duty Cycle: 1:8.3

Probe: ES3DV3 - SN3149 ConvF(6.56, 6.56, 6.56)

Cheek Middle/Area Scan (51x121x1): Measurement grid: dx=10mm, dy=10mm

Maximum value of SAR (interpolated) = 0.452 mW/g

Cheek Middle/Zoom Scan (7x7x7)/Cube 0: Measurement grid: dx=5mm, dy=5mm, dz=5mm

Reference Value = 3.60 V/m; Power Drift = 0.123 dB

Peak SAR (extrapolated) = 0.612 W/kg

SAR(1 g) = 0.423 mW/g; SAR(10 g) = 0.284 mW/g

Maximum value of SAR (measured) = 0.441 mW/g



0 dB = 0.441mW/g

Fig. 9 850 MHz CH128

850 Right Cheek Low

Date/Time: 2009-5-25 9:57:20

Electronics: DAE4 Sn771

Medium: Head 850

Medium parameters used: $f = 825 \text{ MHz}$; $\sigma = 0.896 \text{ mho/m}$; $\epsilon_r = 40.4$; $\rho = 1000 \text{ kg/m}^3$

Ambient Temperature: 23.3°C Liquid Temperature: 22.5°C

Communication System: GSM 850 Frequency: 824.2 MHz Duty Cycle: 1:8.3

Probe: ES3DV3 - SN3149 ConvF(6.56, 6.56, 6.56)

Cheek Low/Area Scan (51x121x1): Measurement grid: $dx=10\text{mm}$, $dy=10\text{mm}$

Maximum value of SAR (interpolated) = 0.402 mW/g

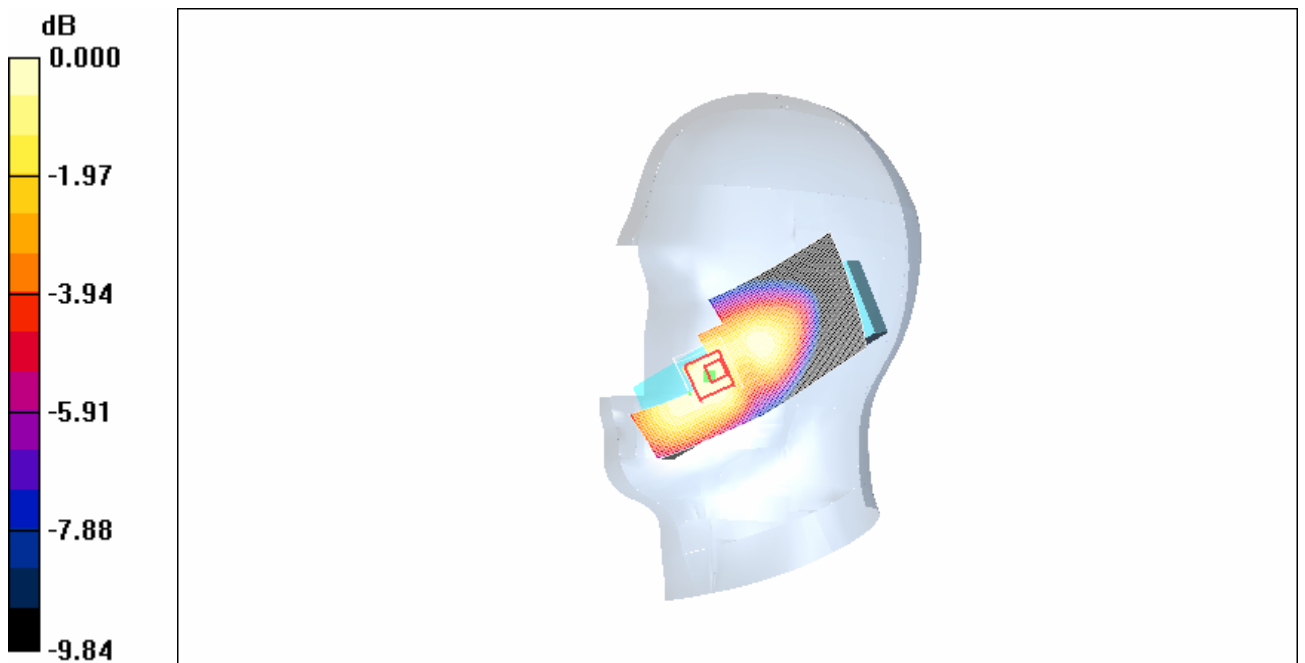
Cheek Low/Zoom Scan (7x7x7)/Cube 0: Measurement grid: $dx=5\text{mm}$, $dy=5\text{mm}$, $dz=5\text{mm}$

Reference Value = 3.15 V/m ; Power Drift = -0.182 dB

Peak SAR (extrapolated) = 0.502 W/kg

SAR(1 g) = 0.365 mW/g ; SAR(10 g) = 0.259 mW/g

Maximum value of SAR (measured) = 0.386 mW/g



0 dB = 0.386mW/g

Fig. 10 850 MHz CH128

850 Right Tilt High

Date/Time: 2009-5-25 10:11:34

Electronics: DAE4 Sn771

Medium: Head 850

Medium parameters used (interpolated): $f = 848.8$ MHz; $\sigma = 0.92$ mho/m; $\epsilon_r = 40.3$; $\rho = 1000$ kg/m³

Ambient Temperature: 23.3°C Liquid Temperature: 22.5°C

Communication System: GSM 850 Frequency: 848.8 MHz Duty Cycle: 1:8.3

Probe: ES3DV3 - SN3149 ConvF(6.56, 6.56, 6.56)

Tilt High/Area Scan (51x121x1): Measurement grid: dx=10mm, dy=10mm

Maximum value of SAR (interpolated) = 0.475 mW/g

Tilt High/Zoom Scan (7x7x7)/Cube 0: Measurement grid: dx=5mm, dy=5mm, dz=5mm

Reference Value = 7.63 V/m; Power Drift = 0.070 dB

Peak SAR (extrapolated) = 0.571 W/kg

SAR(1 g) = 0.451 mW/g; SAR(10 g) = 0.331 mW/g

Maximum value of SAR (measured) = 0.456 mW/g



0 dB = 0.456mW/g

Fig.11 850 MHz CH251

850 Right Tilt Middle

Date/Time: 2009-5-25 10:25:09

Electronics: DAE4 Sn771

Medium: Head 850

Medium parameters used (interpolated): $f = 836.6$ MHz; $\sigma = 0.908$ mho/m; $\epsilon_r = 40.4$; $\rho = 1000$ kg/m³

Ambient Temperature: 23.3°C Liquid Temperature: 22.5°C

Communication System: GSM 850 Frequency: 836.6 MHz Duty Cycle: 1:8.3

Probe: ES3DV3 - SN3149 ConvF(6.56, 6.56, 6.56)

Tilt Middle/Area Scan (51x121x1): Measurement grid: dx=10mm, dy=10mm

Maximum value of SAR (interpolated) = 0.302 mW/g

Tilt Middle/Zoom Scan (7x7x7)/Cube 0: Measurement grid: dx=5mm, dy=5mm, dz=5mm

Reference Value = 5.96 V/m; Power Drift = 0.001 dB

Peak SAR (extrapolated) = 0.362 W/kg

SAR(1 g) = 0.287 mW/g; SAR(10 g) = 0.211 mW/g

Maximum value of SAR (measured) = 0.290 mW/g



0 dB = 0.290mW/g

Fig.12 850 MHz CH190

850 Right Tilt Low

Date/Time: 2009-5-25 10:39:22

Electronics: DAE4 Sn771

Medium: Head 850

Medium parameters used: $f = 825$ MHz; $\sigma = 0.896$ mho/m; $\epsilon_r = 40.4$; $\rho = 1000$ kg/m³

Ambient Temperature: 23.3°C Liquid Temperature: 22.5°C

Communication System: GSM 850 Frequency: 824.2 MHz Duty Cycle: 1:8.3

Probe: ES3DV3 - SN3149 ConvF(6.56, 6.56, 6.56)

Tilt Low/Area Scan (51x121x1): Measurement grid: dx=10mm, dy=10mm

Maximum value of SAR (interpolated) = 0.278 mW/g

Tilt Low/Zoom Scan (7x7x7)/Cube 0: Measurement grid: dx=5mm, dy=5mm, dz=5mm

Reference Value = 5.66 V/m; Power Drift = -0.152 dB

Peak SAR (extrapolated) = 0.332 W/kg

SAR(1 g) = 0.263 mW/g; SAR(10 g) = 0.195 mW/g

Maximum value of SAR (measured) = 0.270 mW/g



0 dB = 0.270mW/g

Fig. 13 850 MHz CH128

850 Body Towards Ground High With GPRS

Date/Time: 2009-5-25 11:32:03

Electronics: DAE4 Sn771

Medium: 850 Body

Medium parameters used (interpolated): $f = 848.8$ MHz; $\sigma = 1.01$ mho/m; $\epsilon_r = 53.7$; $\rho = 1000$ kg/m³

Ambient Temperature: 23.3°C Liquid Temperature: 22.5°C

Communication System: GSM 850 GPRS Frequency: 848.8 MHz Duty Cycle: 1:4

Probe: ES3DV3 - SN3149 ConvF(6.22, 6.22, 6.22)

Towards Ground High/Area Scan (51x131x1): Measurement grid: dx=10mm, dy=10mm
Maximum value of SAR (interpolated) = 1.17 mW/g

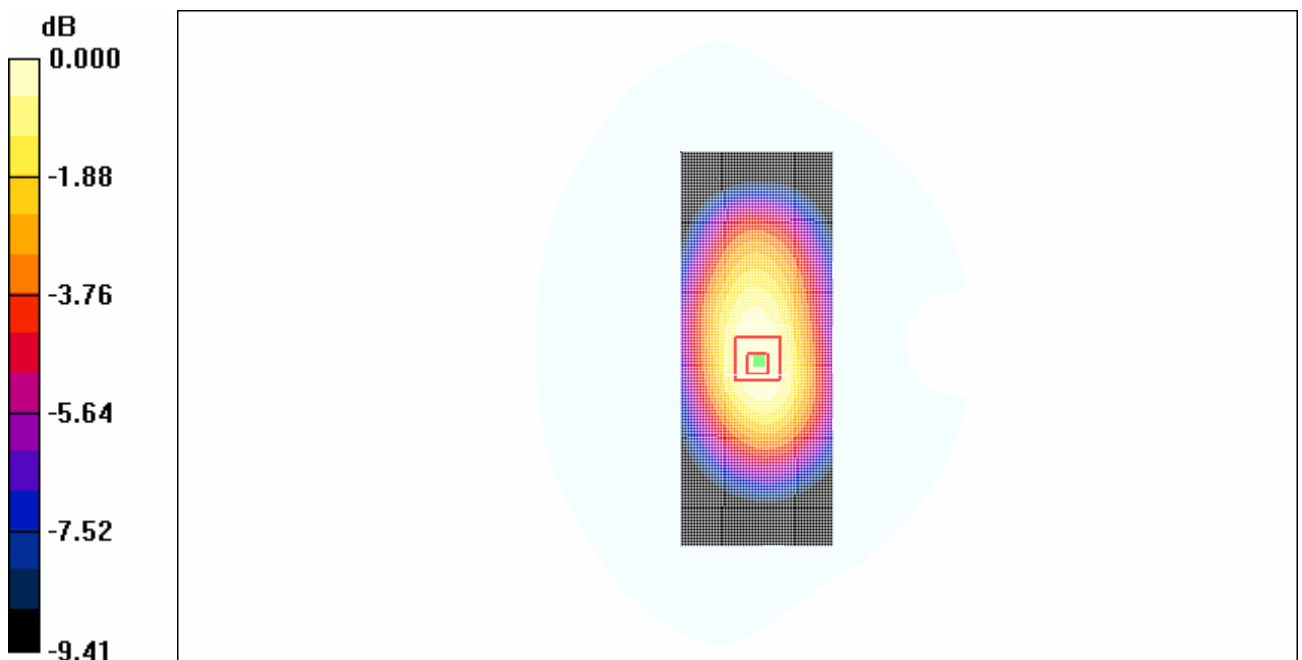
Towards Ground High/Zoom Scan (7x7x7)/Cube 0: Measurement grid: dx=5mm, dy=5mm, dz=5mm

Reference Value = 34.7 V/m; Power Drift = -0.118 dB

Peak SAR (extrapolated) = 1.44 W/kg

SAR(1 g) = 1.06 mW/g; SAR(10 g) = 0.749 mW/g

Maximum value of SAR (measured) = 1.12 mW/g



0 dB = 1.12mW/g

Fig. 14 850 MHz CH251

850 Body Towards Ground Middle With GPRS

Date/Time: 2009-5-25 11:47:10

Electronics: DAE4 Sn771

Medium: 850 Body

Medium parameters used (interpolated): $f = 836.6$ MHz; $\sigma = 1.00$ mho/m; $\epsilon_r = 53.8$; $\rho = 1000$ kg/m³

Ambient Temperature: 23.3°C Liquid Temperature: 22.5°C

Communication System: GSM 850 GPRS Frequency: 836.6 MHz Duty Cycle: 1:4

Probe: ES3DV3 - SN3149 ConvF(6.22, 6.22, 6.22)

Towards Ground Middle/Area Scan (51x131x1): Measurement grid: dx=10mm, dy=10mm
Maximum value of SAR (interpolated) = 1.03 mW/g

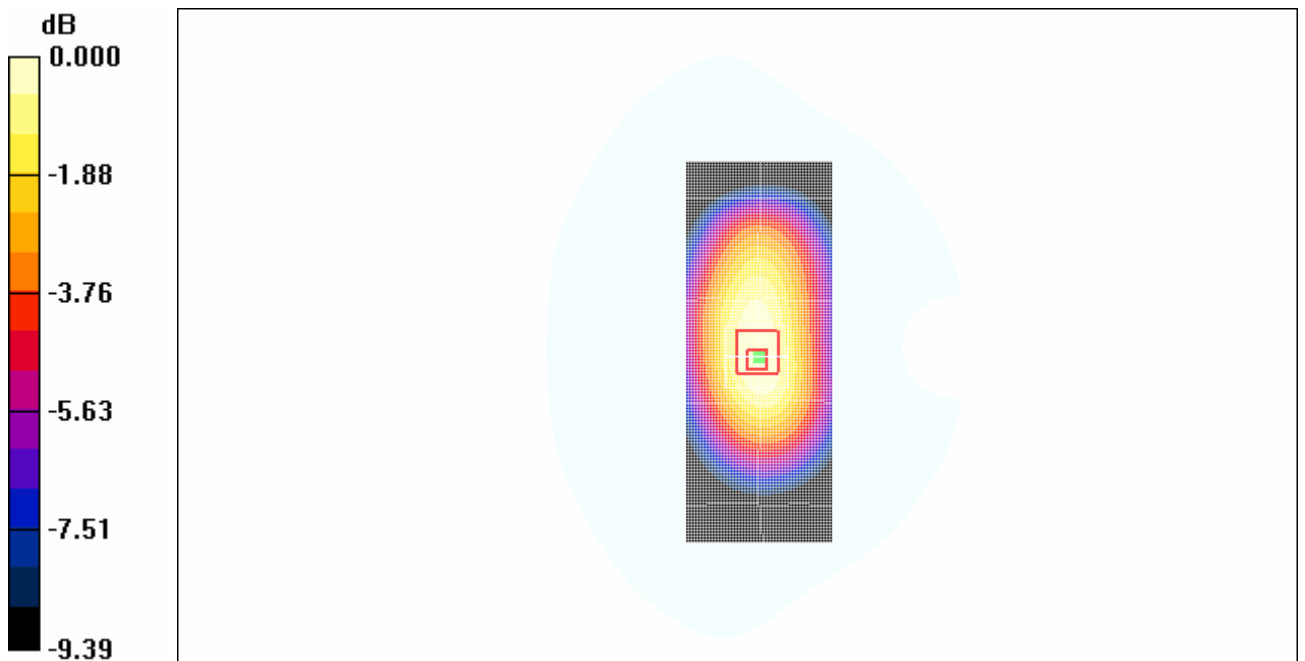
Towards Ground Middle/Zoom Scan (7x7x7)/Cube 0: Measurement grid: dx=5mm, dy=5mm, dz=5mm

Reference Value = 32.4 V/m; Power Drift = 0.000 dB

Peak SAR (extrapolated) = 1.30 W/kg

SAR(1 g) = 0.964 mW/g; SAR(10 g) = 0.688 mW/g

Maximum value of SAR (measured) = 1.02 mW/g



0 dB = 1.02mW/g

Fig. 15 850 MHz CH190

850 Body Towards Ground Low With GPRS

Date/Time: 2009-5-25 12:03:24

Electronics: DAE4 Sn771

Medium: 850 Body

Medium parameters used: $f = 825$ MHz; $\sigma = 0.983$ mho/m; $\epsilon_r = 53.9$; $\rho = 1000$ kg/m³

Ambient Temperature: 23.3°C Liquid Temperature: 22.5°C

Communication System: GSM 850 GPRS Frequency: 824.2 MHz Duty Cycle: 1:4

Probe: ES3DV3 - SN3149 ConvF(6.22, 6.22, 6.22)

Towards Ground Low/Area Scan (51x131x1): Measurement grid: dx=10mm, dy=10mm

Maximum value of SAR (interpolated) = 1.19 mW/g

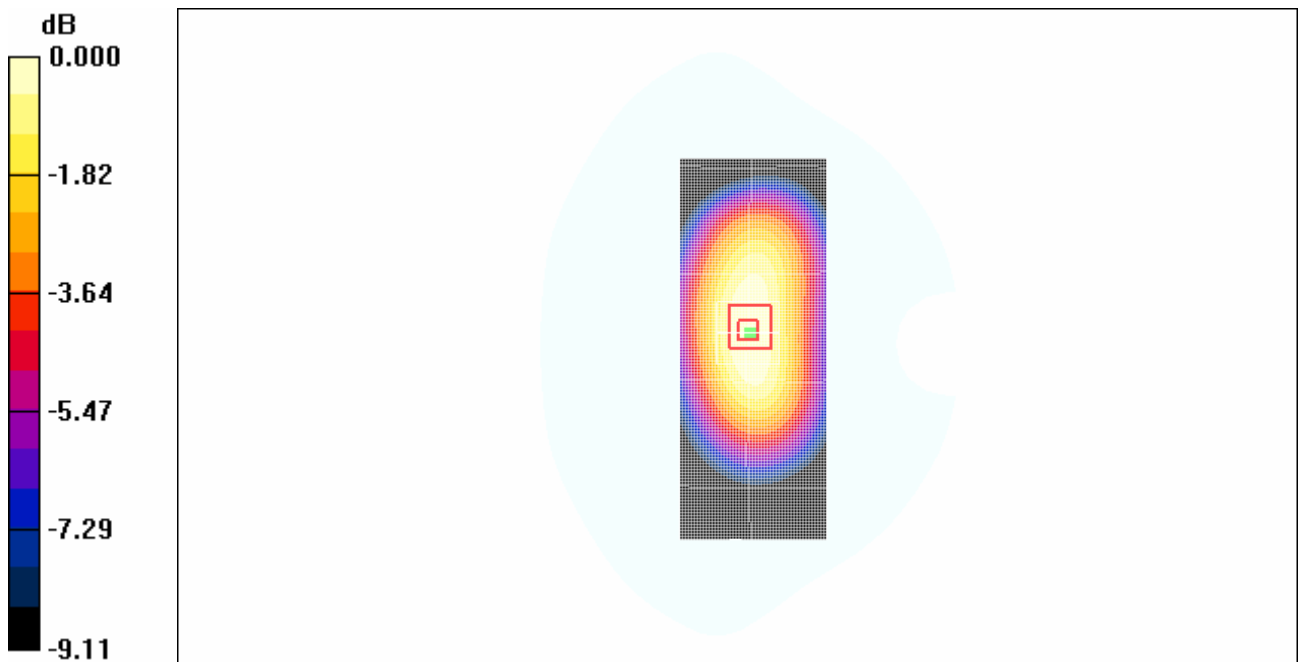
Towards Ground Low/Zoom Scan (7x7x7)/Cube 0: Measurement grid: dx=5mm, dy=5mm, dz=5mm

Reference Value = 35.0 V/m; Power Drift = 0.027 dB

Peak SAR (extrapolated) = 1.48 W/kg

SAR(1 g) = 1.13 mW/g; SAR(10 g) = 0.819 mW/g

Maximum value of SAR (measured) = 1.20 mW/g



0 dB = 1.20mW/g

Fig. 16 850 MHz CH128

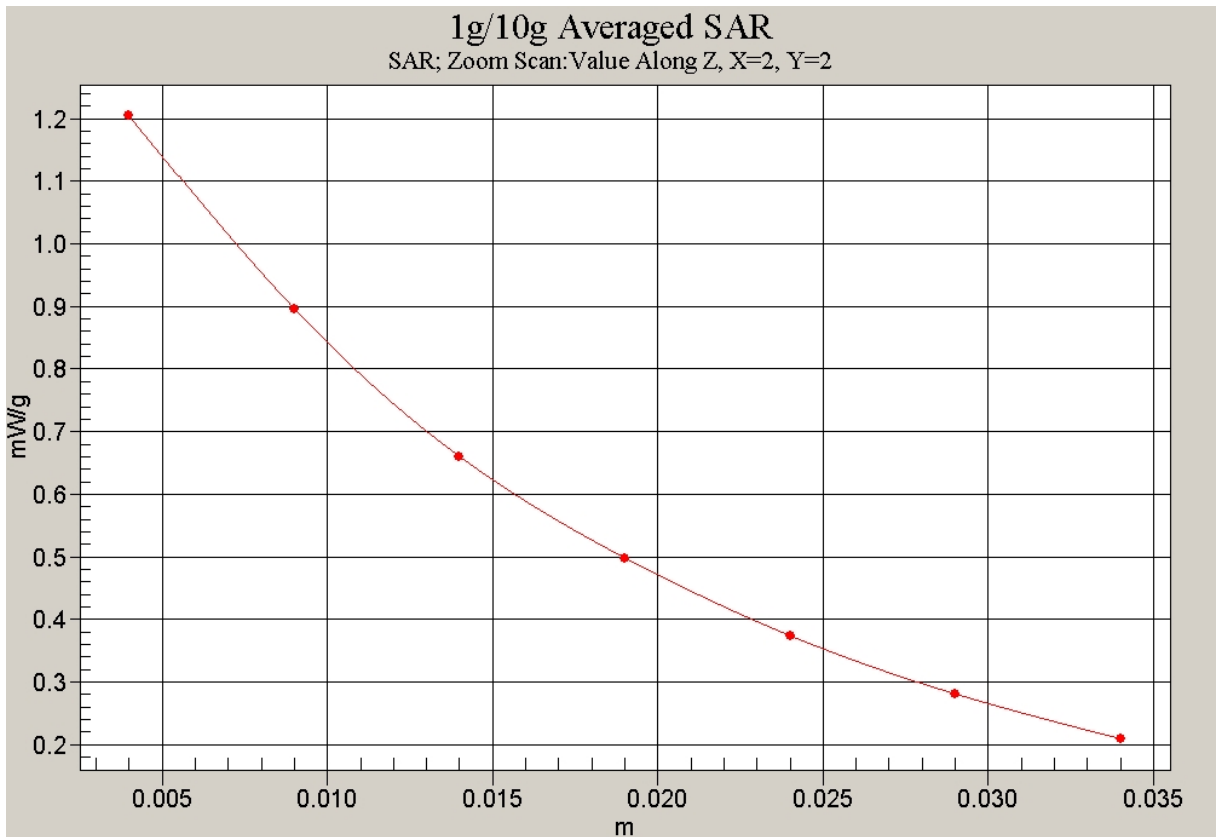


Fig. 17 Z-Scan at power reference point (850 MHz CH128)

850 Body Towards Ground Low with Headset

Date/Time: 2009-5-25 12:20:44

Electronics: DAE4 Sn771

Medium: 850 Body

Medium parameters used: $f = 825 \text{ MHz}$; $\sigma = 0.983 \text{ mho/m}$; $\epsilon_r = 53.9$; $\rho = 1000 \text{ kg/m}^3$

Ambient Temperature: 23.3°C Liquid Temperature: 22.5°C

Communication System: GSM 850 GPRS Frequency: 824.2 MHz Duty Cycle: 1:8.3

Probe: ES3DV3 - SN3149 ConvF(6.22, 6.22, 6.22)

Towards Ground Low/Area Scan (51x131x1): Measurement grid: $dx=10\text{mm}$, $dy=10\text{mm}$

Maximum value of SAR (interpolated) = 0.672 mW/g

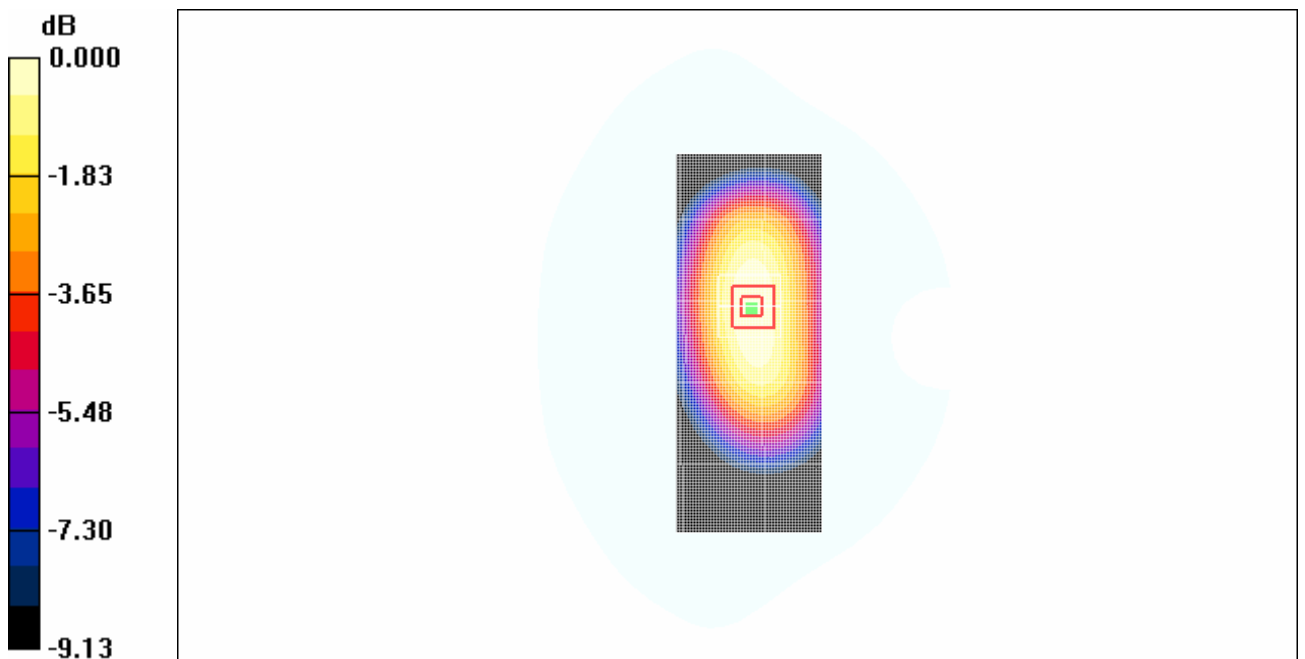
Towards Ground Low/Zoom Scan (7x7x7)/Cube 0: Measurement grid: $dx=5\text{mm}$, $dy=5\text{mm}$, $dz=5\text{mm}$

Reference Value = 25.3 V/m ; Power Drift = 0.021 dB

Peak SAR (extrapolated) = 0.817 W/kg

SAR(1 g) = 0.628 mW/g ; SAR(10 g) = 0.456 mW/g

Maximum value of SAR (measured) = 0.662 mW/g



0 dB = 0.662mW/g

Fig. 18 850 MHz CH128

1900 Left Cheek High

Date/Time: 2009-5-26 8:09:28

Electronics: DAE4 Sn771

Medium: 1900 Head

Medium parameters used: $f = 1910 \text{ MHz}$; $\sigma = 1.43 \text{ mho/m}$; $\epsilon_r = 39.1$; $\rho = 1000 \text{ kg/m}^3$

Ambient Temperature: 23.3°C Liquid Temperature: 22.5°C

Communication System: GSM 1900MHz Frequency: 1909.8 MHz Duty Cycle: 1:8.3

Probe: ES3DV3 - SN3149 ConvF(5.03, 5.03, 5.03)

Cheek High/Area Scan (51x121x1): Measurement grid: $dx=10\text{mm}$, $dy=10\text{mm}$

Maximum value of SAR (interpolated) = 1.52 mW/g

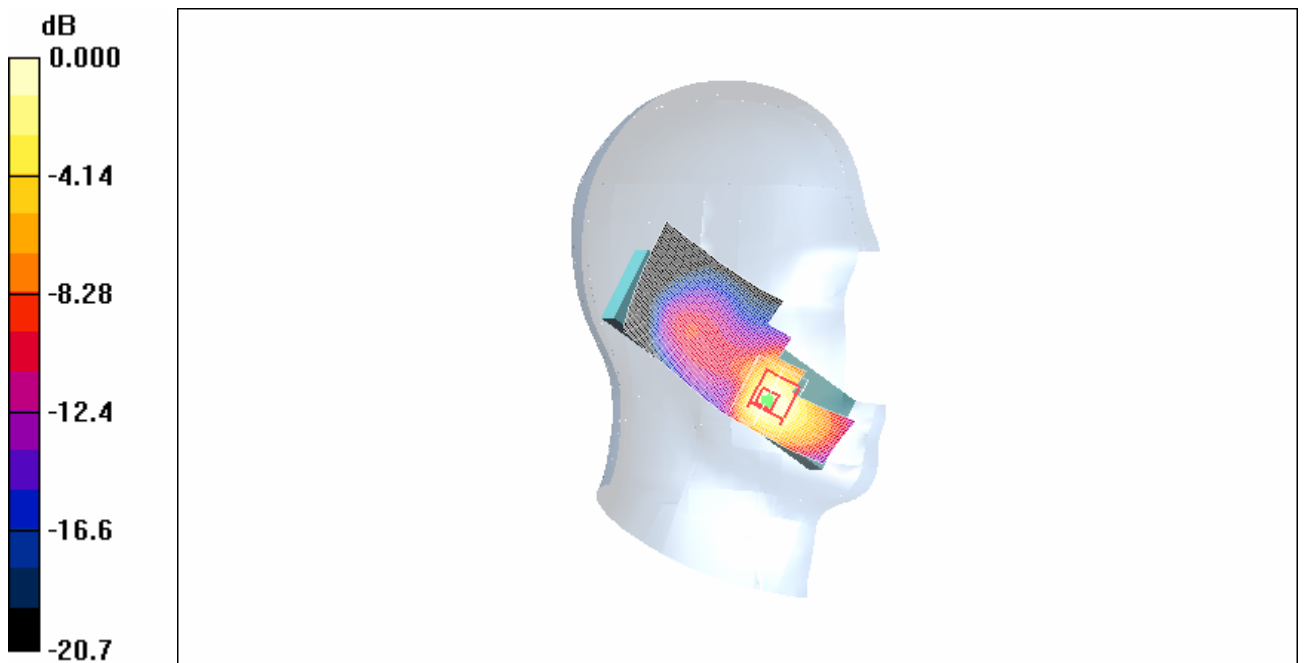
Cheek High/Zoom Scan (7x7x7)/Cube 0: Measurement grid: $dx=5\text{mm}$, $dy=5\text{mm}$, $dz=5\text{mm}$

Reference Value = 3.31 V/m; Power Drift = -0.145 dB

Peak SAR (extrapolated) = 2.09 W/kg

SAR(1 g) = 1.16 mW/g; SAR(10 g) = 0.632 mW/g

Maximum value of SAR (measured) = 1.28 mW/g



0 dB = 1.28mW/g

Fig. 19 1900 MHz CH810

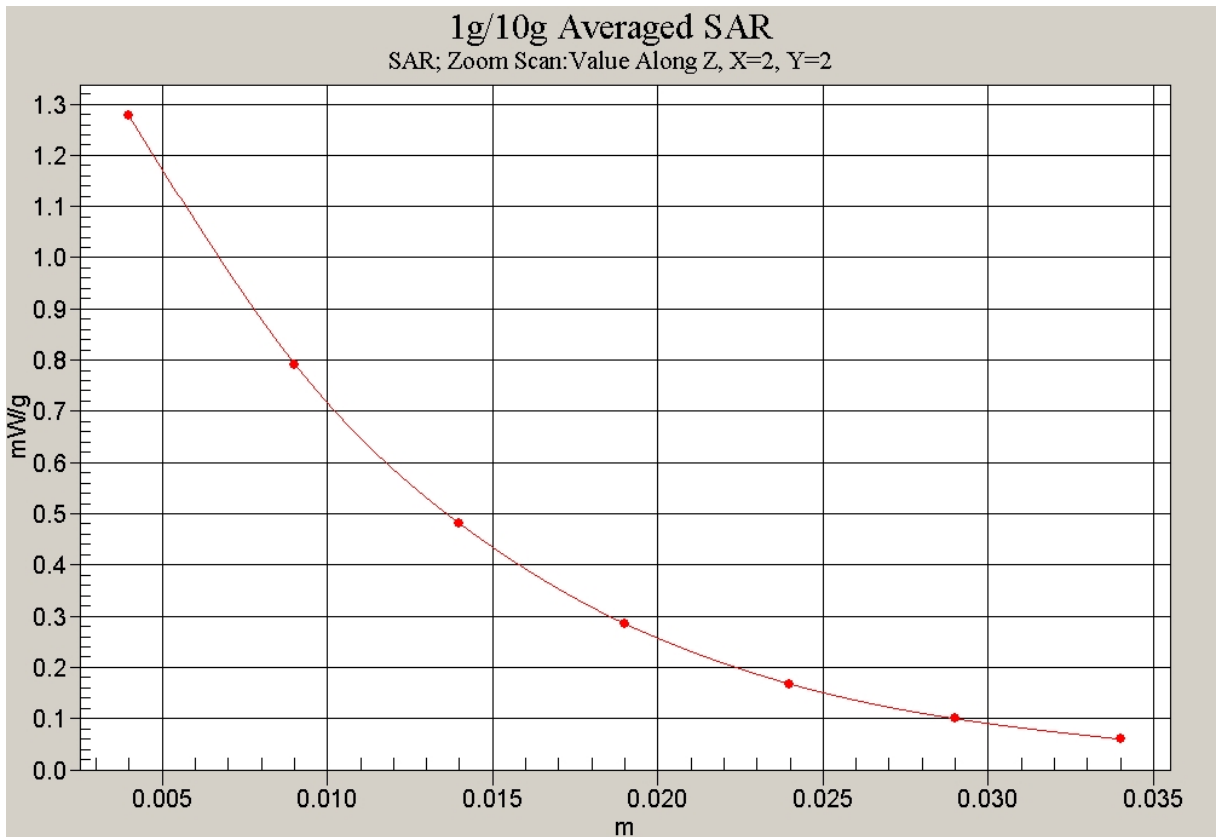


Fig. 20 Z-Scan at power reference point (1900 MHz CH810)

1900 Left Cheek Middle

Date/Time: 2009-5-26 8:23:04

Electronics: DAE4 Sn771

Medium: Head 1900 MHz

Medium parameters used: $f = 1880$ MHz; $\sigma = 1.41$ mho/m; $\epsilon_r = 39.2$; $\rho = 1000$ kg/m³

Ambient Temperature: 23.3°C Liquid Temperature: 22.5°C

Communication System: GSM 1900MHz Frequency: 1880 MHz Duty Cycle: 1:8.3

Probe: ES3DV3 - SN3149 ConvF(5.03, 5.03, 5.03)

Cheek Middle/Area Scan (51x121x1): Measurement grid: dx=10mm, dy=10mm

Maximum value of SAR (interpolated) = 1.16 mW/g

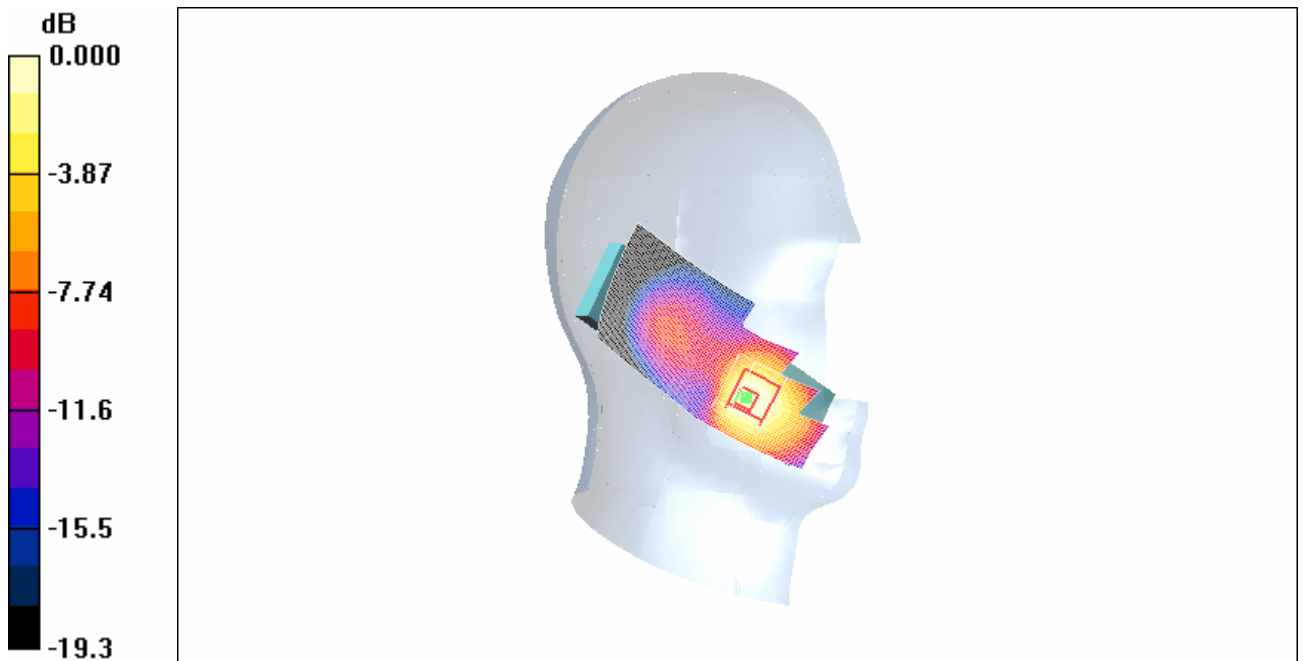
Cheek Middle/Zoom Scan (7x7x7)/Cube 0: Measurement grid: dx=5mm, dy=5mm, dz=5mm

Reference Value = 3.33 V/m; Power Drift = -0.108 dB

Peak SAR (extrapolated) = 1.84 W/kg

SAR(1 g) = 1.06 mW/g; SAR(10 g) = 0.580 mW/g

Maximum value of SAR (measured) = 1.07 mW/g



0 dB = 1.07mW/g

Fig. 21 1900 MHz CH661

1900 Left Cheek Low

Date/Time: 2009-5-26 8:37:21

Electronics: DAE4 Sn771

Medium: 1900 Head

Medium parameters used (interpolated): $f = 1850.2$ MHz; $\sigma = 1.38$ mho/m; $\epsilon_r = 39.3$; $\rho = 1000$ kg/m³

Ambient Temperature: 23.3°C Liquid Temperature: 22.5°C

Communication System: GSM 1900MHz Frequency: 1850.2 MHz Duty Cycle: 1:8.3

Probe: ES3DV3 - SN3149 ConvF(5.03, 5.03, 5.03)

Cheek Low/Area Scan (51x121x1): Measurement grid: dx=10mm, dy=10mm

Maximum value of SAR (interpolated) = 1.10 mW/g

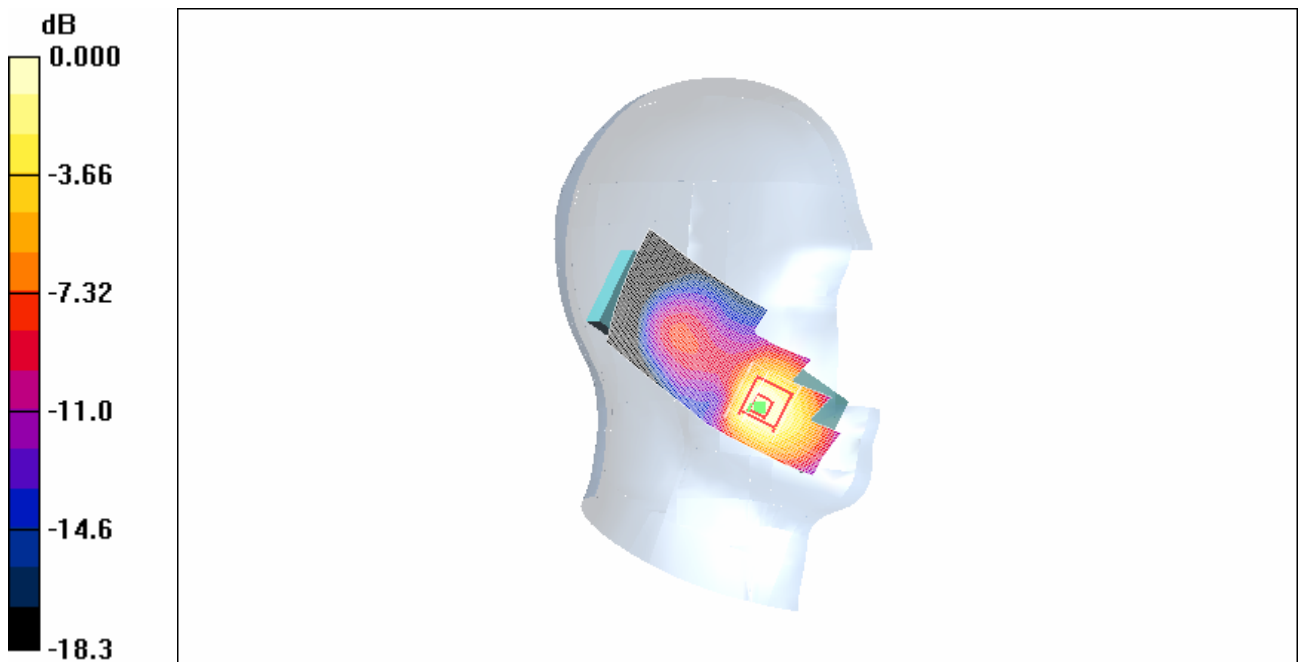
Cheek Low/Zoom Scan (7x7x7)/Cube 0: Measurement grid: dx=5mm, dy=5mm, dz=5mm

Reference Value = 3.23 V/m; Power Drift = -0.118 dB

Peak SAR (extrapolated) = 1.65 W/kg

SAR(1 g) = 0.992 mW/g; SAR(10 g) = 0.554 mW/g

Maximum value of SAR (measured) = 0.965 mW/g



0 dB = 0.965mW/g

Fig. 22 1900 MHz CH512

1900 Left Tilt High

Date/Time: 2009-5-26 8:51:33

Electronics: DAE4 Sn771

Medium: 1900 Head

Medium parameters used: $f = 1910$ MHz; $\sigma = 1.43$ mho/m; $\epsilon_r = 39.1$; $\rho = 1000$ kg/m³

Ambient Temperature: 23.3°C Liquid Temperature: 22.5°C

Communication System: GSM 1900MHz Frequency: 1909.8 MHz Duty Cycle: 1:8.3

Probe: ES3DV3 - SN3149 ConvF(5.03, 5.03, 5.03)

Tilt High/Area Scan (51x121x1): Measurement grid: dx=10mm, dy=10mm

Maximum value of SAR (interpolated) = 0.238 mW/g

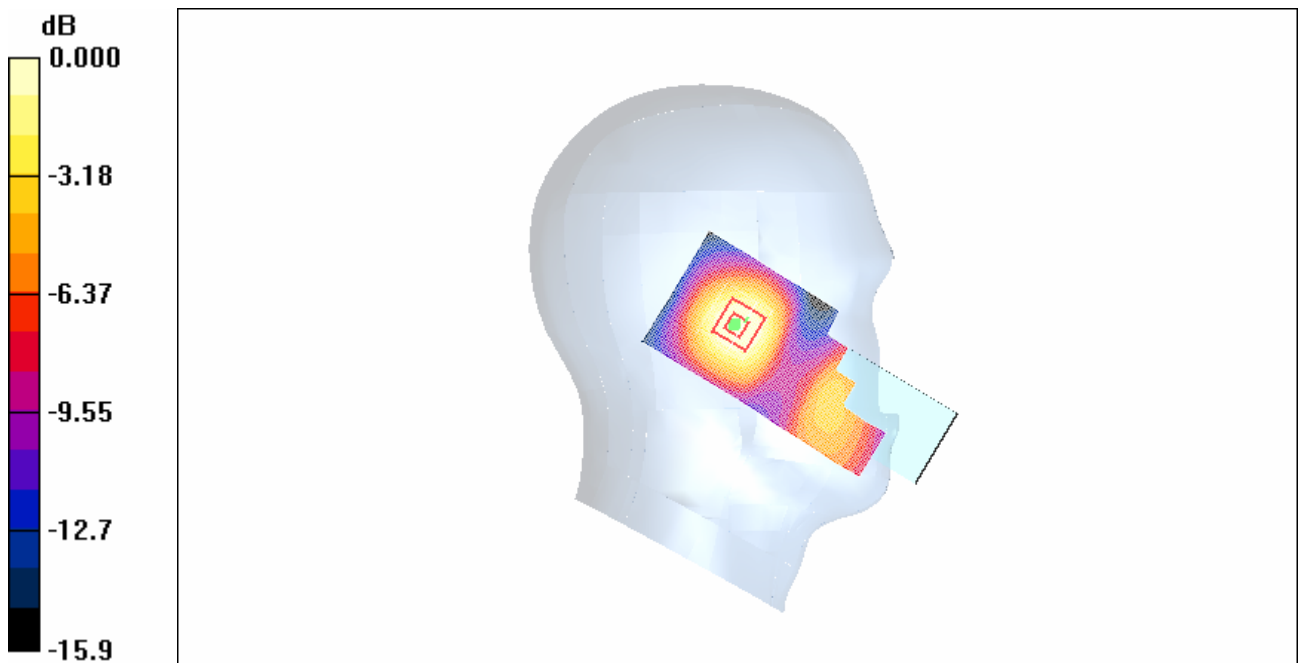
Tilt High/Zoom Scan (7x7x7)/Cube 0: Measurement grid: dx=5mm, dy=5mm, dz=5mm

Reference Value = 6.63 V/m; Power Drift = -0.070 dB

Peak SAR (extrapolated) = 0.313 W/kg

SAR(1 g) = 0.206 mW/g; SAR(10 g) = 0.124 mW/g

Maximum value of SAR (measured) = 0.211 mW/g



0 dB = 0.211mW/g

Fig.23 1900 MHz CH810

1900 Left Tilt Middle

Date/Time: 2009-5-26 9:05:42

Electronics: DAE4 Sn771

Medium: 1900 Head

Medium parameters used: $f = 1880$ MHz; $\sigma = 1.41$ mho/m; $\epsilon_r = 39.2$; $\rho = 1000$ kg/m³

Ambient Temperature: 23.3°C Liquid Temperature: 22.5°C

Communication System: GSM 1900MHz Frequency: 1880 MHz Duty Cycle: 1:8.3

Probe: ES3DV3 - SN3149 ConvF(5.03, 5.03, 5.03)

Tilt Middle/Area Scan (51x121x1): Measurement grid: dx=10mm, dy=10mm

Maximum value of SAR (interpolated) = 0.254 mW/g

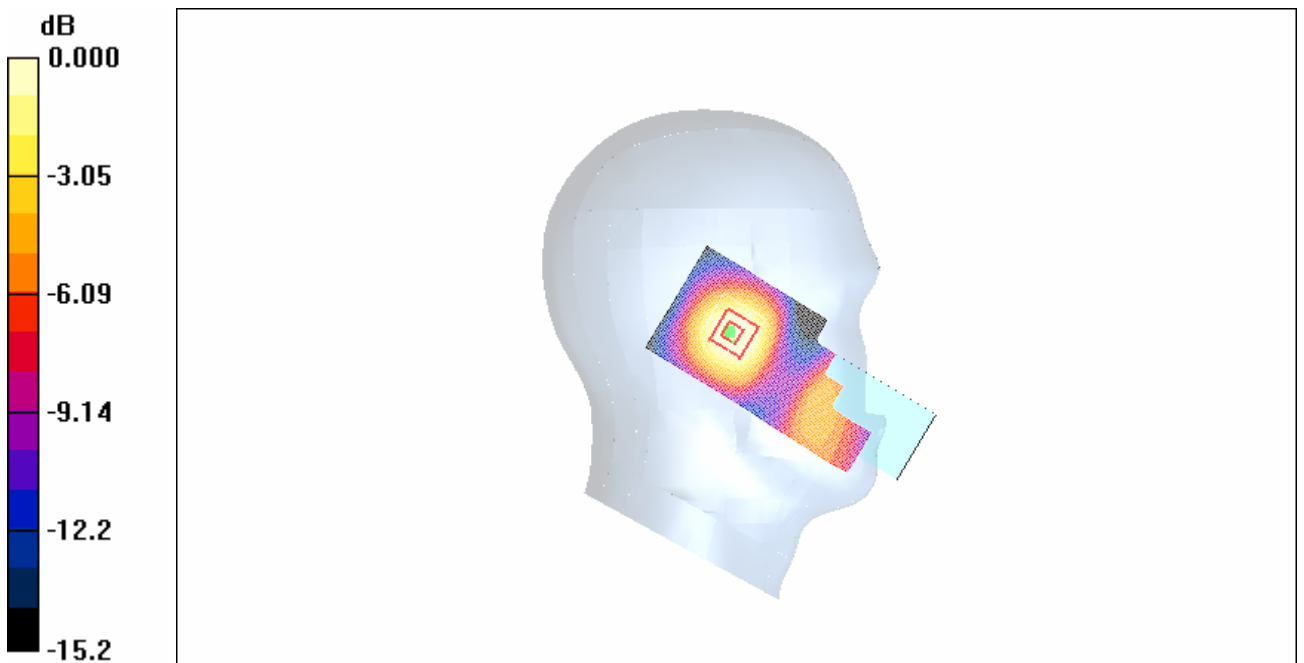
Tilt Middle/Zoom Scan (7x7x7)/Cube 0: Measurement grid: dx=5mm, dy=5mm, dz=5mm

Reference Value = 6.97 V/m; Power Drift = 0.010 dB

Peak SAR (extrapolated) = 0.335 W/kg

SAR(1 g) = 0.224 mW/g; SAR(10 g) = 0.136 mW/g

Maximum value of SAR (measured) = 0.229 mW/g



0 dB = 0.229mW/g

Fig. 24 1900 MHz CH661

1900 Left Tilt Low

Date/Time: 2009-5-26 9:19:30

Electronics: DAE4 Sn771

Medium: 1900 Head

Medium parameters used (interpolated): $f = 1850.2$ MHz; $\sigma = 1.38$ mho/m; $\epsilon_r = 39.3$; $\rho = 1000$ kg/m³

Ambient Temperature: 23.3°C Liquid Temperature: 22.5°C

Communication System: GSM 1900MHz Frequency: 1850.2 MHz Duty Cycle: 1:8.3

Probe: ES3DV3 - SN3149 ConvF(5.03, 5.03, 5.03)

Tilt Low/Area Scan (51x121x1): Measurement grid: dx=10mm, dy=10mm

Maximum value of SAR (interpolated) = 0.254 mW/g

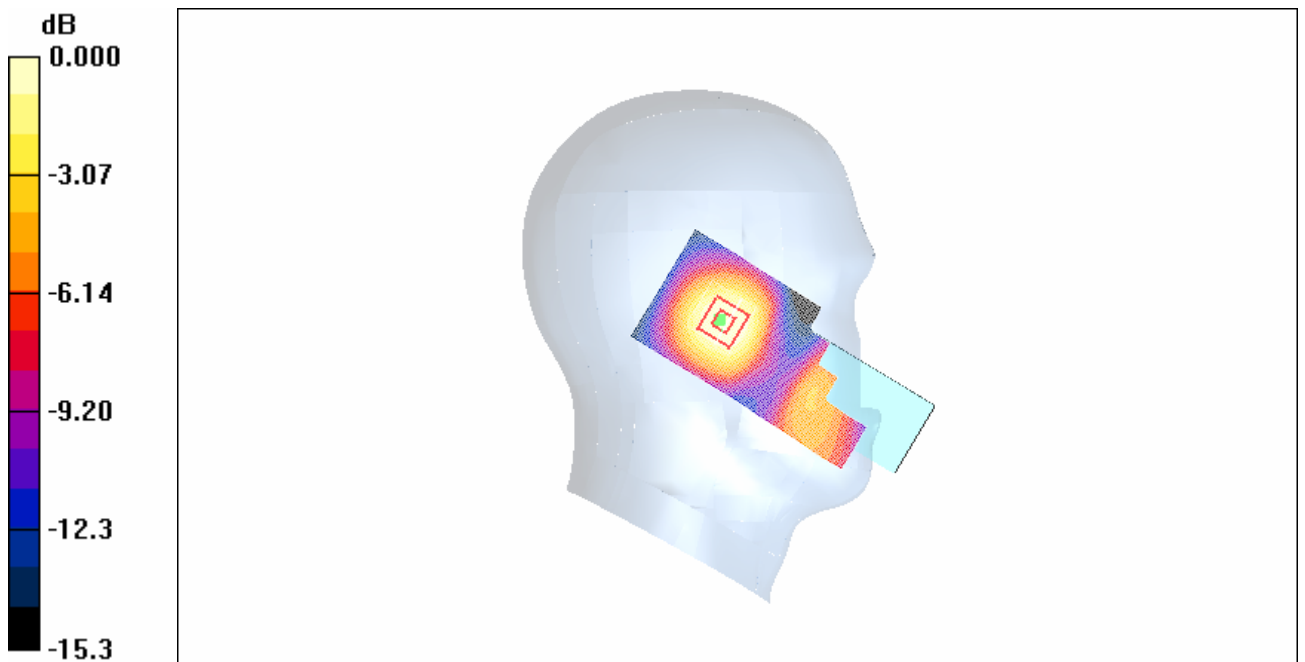
Tilt Low/Zoom Scan (7x7x7)/Cube 0: Measurement grid: dx=5mm, dy=5mm, dz=5mm

Reference Value = 7.20 V/m; Power Drift = -0.080 dB

Peak SAR (extrapolated) = 0.329 W/kg

SAR(1 g) = 0.221 mW/g; SAR(10 g) = 0.136 mW/g

Maximum value of SAR (measured) = 0.226 mW/g



0 dB = 0.226mW/g

Fig. 25 1900 MHz CH512

1900 Right Cheek High

Date/Time: 2009-5-26 9:33:54

Electronics: DAE4 Sn771

Medium: 1900 Head

Medium parameters used: $f = 1910 \text{ MHz}$; $\sigma = 1.43 \text{ mho/m}$; $\epsilon_r = 39.1$; $\rho = 1000 \text{ kg/m}^3$

Ambient Temperature: 23.3°C Liquid Temperature: 22.5°C

Communication System: GSM 1900MHz Frequency: 1909.8 MHz Duty Cycle: 1:8.3

Probe: ES3DV3 - SN3149 ConvF(5.03, 5.03, 5.03)

Cheek High/Area Scan (51x121x1): Measurement grid: $dx=10\text{mm}$, $dy=10\text{mm}$

Maximum value of SAR (interpolated) = 0.853 mW/g

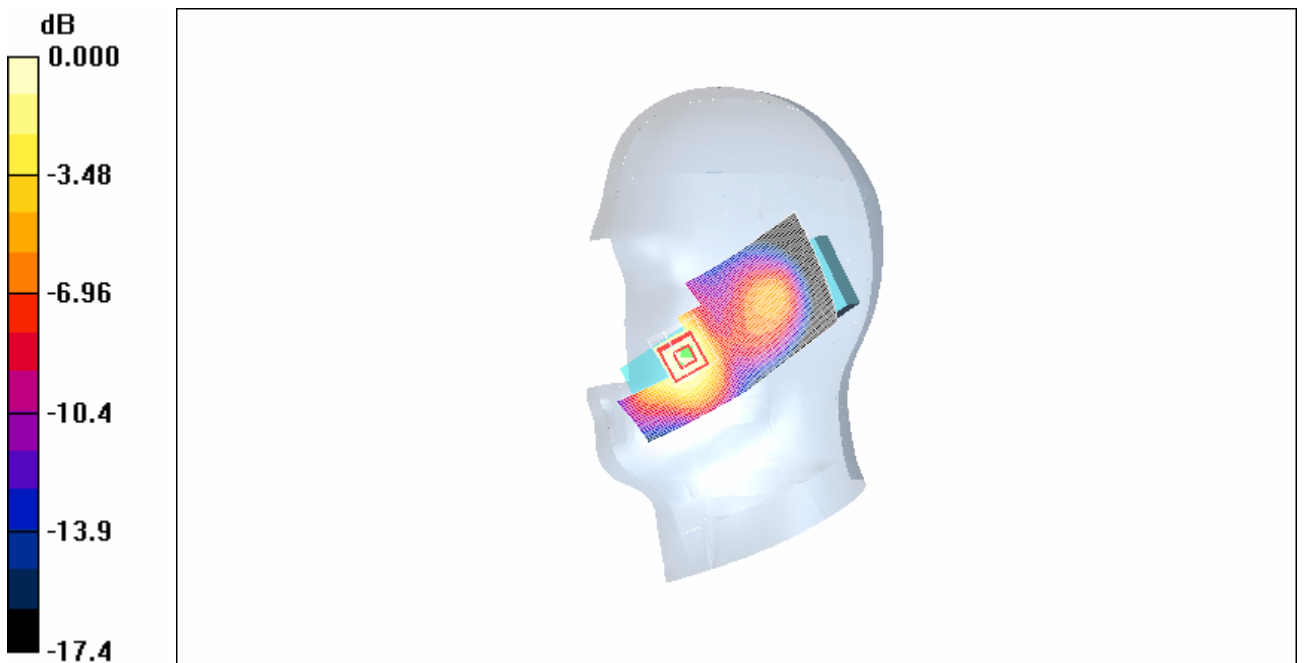
Cheek High/Zoom Scan (7x7x7)/Cube 0: Measurement grid: $dx=5\text{mm}$, $dy=5\text{mm}$, $dz=5\text{mm}$

Reference Value = 3.41 V/m; Power Drift = 0.025 dB

Peak SAR (extrapolated) = 1.04 W/kg

SAR(1 g) = 0.713 mW/g; SAR(10 g) = 0.424 mW/g

Maximum value of SAR (measured) = 0.778 mW/g



0 dB = 0.778mW/g

Fig. 26 1900 MHz CH810

1900 Right Cheek Middle

Date/Time: 2009-5-26 9:47:50

Electronics: DAE4 Sn771

Medium: 1900 Head

Medium parameters used: $f = 1880$ MHz; $\sigma = 1.41$ mho/m; $\epsilon_r = 39.2$; $\rho = 1000$ kg/m³

Ambient Temperature: 23.3°C Liquid Temperature: 22.5°C

Communication System: GSM 1900MHz Frequency: 1880 MHz Duty Cycle: 1:8.3

Probe: ES3DV3 - SN3149 ConvF(5.03, 5.03, 5.03)

Cheek Middle/Area Scan (51x121x1): Measurement grid: dx=10mm, dy=10mm

Maximum value of SAR (interpolated) = 0.787 mW/g

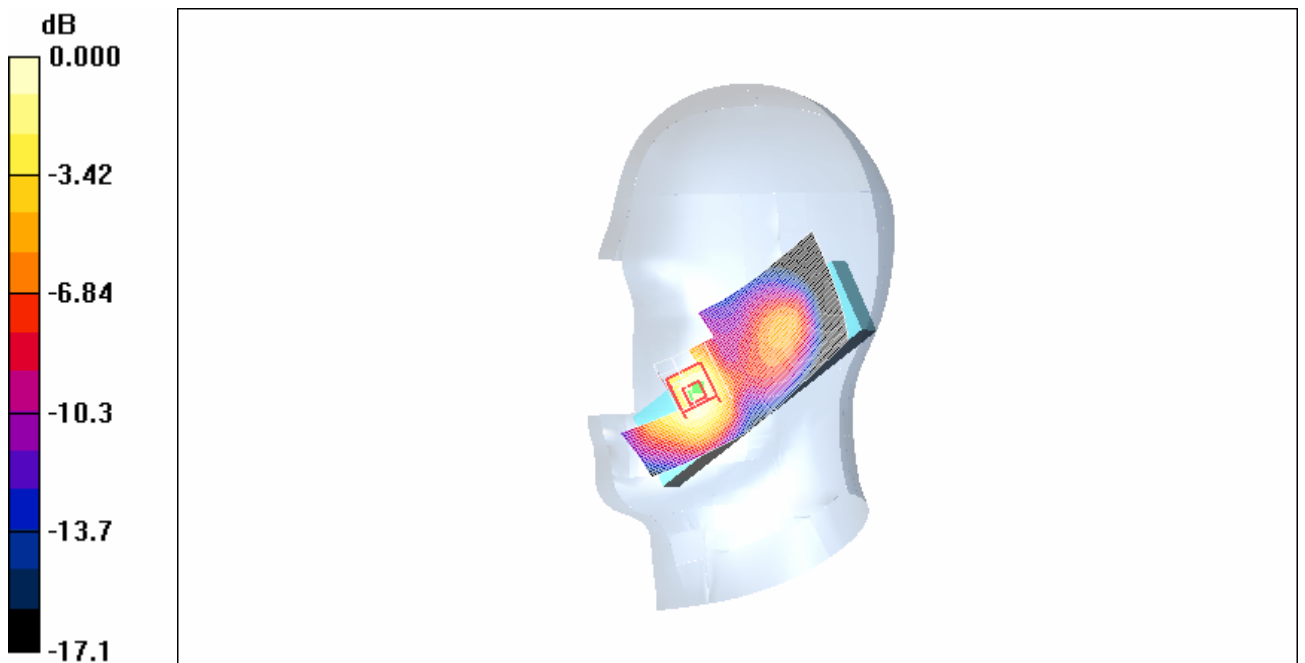
Cheek Middle/Zoom Scan (7x7x7)/Cube 0: Measurement grid: dx=5mm, dy=5mm, dz=5mm

Reference Value = 3.67 V/m; Power Drift = -0.118 dB

Peak SAR (extrapolated) = 1.00 W/kg

SAR(1 g) = 0.683 mW/g; SAR(10 g) = 0.408 mW/g

Maximum value of SAR (measured) = 0.743 mW/g



0 dB = 0.743mW/g

Fig. 27 1900 MHz CH661

1900 Right Cheek Low

Date/Time: 2009-5-26 10:01:43

Electronics: DAE4 Sn771

Medium: 1900 Head

Medium parameters used (interpolated): $f = 1850.2$ MHz; $\sigma = 1.38$ mho/m; $\epsilon_r = 39.3$; $\rho = 1000$ kg/m³

Ambient Temperature: 23.3°C Liquid Temperature: 22.5°C

Communication System: GSM 1900MHz Frequency: 1850.2 MHz Duty Cycle: 1:8.3

Probe: ES3DV3 - SN3149 ConvF(5.03, 5.03, 5.03)

Cheek Low/Area Scan (51x121x1): Measurement grid: dx=10mm, dy=10mm

Maximum value of SAR (interpolated) = 0.734 mW/g

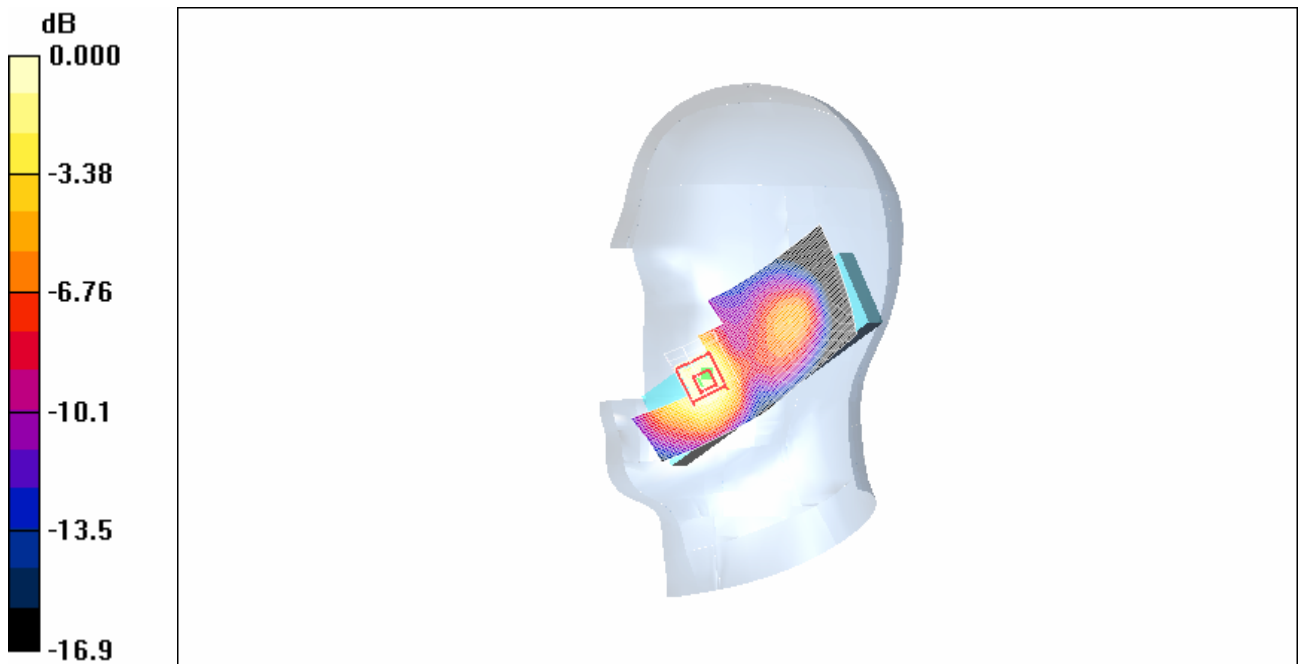
Cheek Low/Zoom Scan (7x7x7)/Cube 0: Measurement grid: dx=5mm, dy=5mm, dz=5mm

Reference Value = 3.45 V/m; Power Drift = -0.188 dB

Peak SAR (extrapolated) = 0.954 W/kg

SAR(1 g) = 0.648 mW/g; SAR(10 g) = 0.391 mW/g

Maximum value of SAR (measured) = 0.708 mW/g



0 dB = 0.708mW/g

Fig. 28 1900 MHz CH512

1900 Right Tilt High

Date/Time: 2009-5-26 10:15:31

Electronics: DAE4 Sn771

Medium: 1900 Head

Medium parameters used: $f = 1910$ MHz; $\sigma = 1.43$ mho/m; $\epsilon_r = 39.1$; $\rho = 1000$ kg/m³

Ambient Temperature: 23.3°C Liquid Temperature: 22.5°C

Communication System: GSM 1900MHz Frequency: 1909.8 MHz Duty Cycle: 1:8.3

Probe: ES3DV3 - SN3149 ConvF(5.03, 5.03, 5.03)

Tilt High/Area Scan (51x121x1): Measurement grid: dx=10mm, dy=10mm

Maximum value of SAR (interpolated) = 0.299 mW/g

Tilt High/Zoom Scan (4x4x7)/Cube 0: Measurement grid: dx=10mm, dy=10mm, dz=5mm

Reference Value = 6.97 V/m; Power Drift = -0.191 dB

Peak SAR (extrapolated) = 0.383 W/kg

SAR(1 g) = 0.253 mW/g; SAR(10 g) = 0.152 mW/g

Maximum value of SAR (measured) = 0.264 mW/g

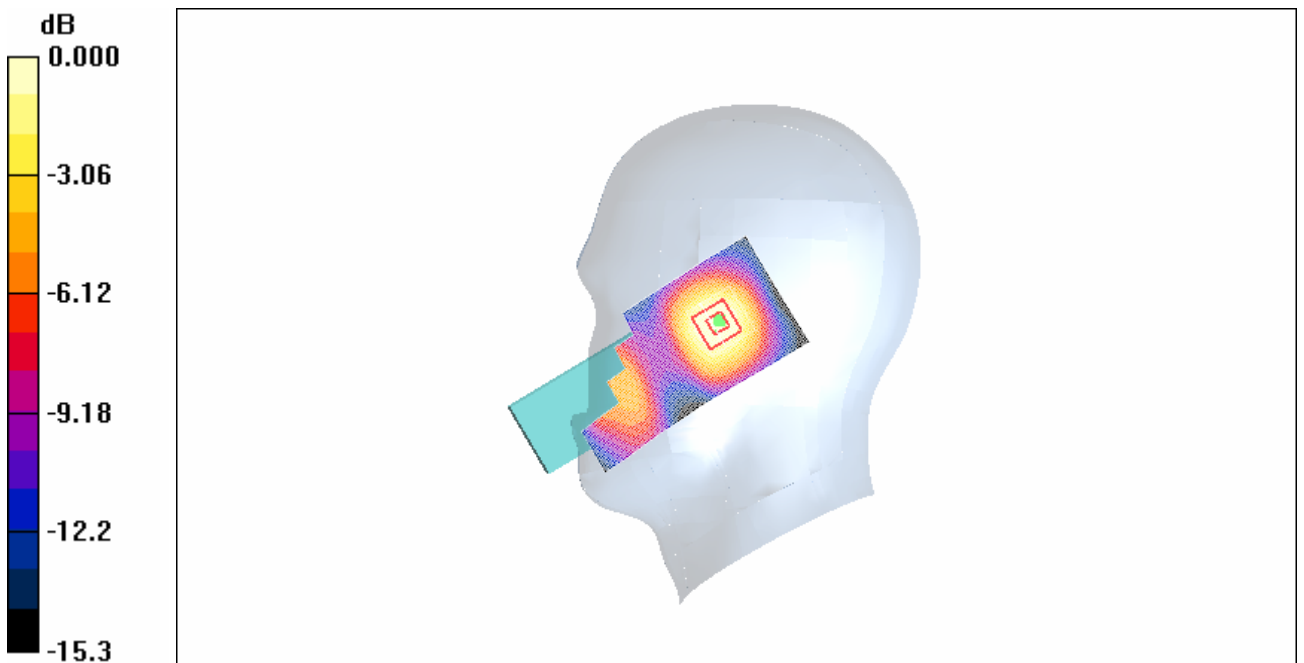


Fig. 29 1900 MHz CH810

1900 Right Tilt Middle

Date/Time: 2009-5-26 10:29:16

Electronics: DAE4 Sn771

Medium: 1900 Head

Medium parameters used: $f = 1880$ MHz; $\sigma = 1.41$ mho/m; $\epsilon_r = 39.2$; $\rho = 1000$ kg/m³

Ambient Temperature: 23.3°C Liquid Temperature: 22.5°C

Communication System: GSM 1900MHz Frequency: 1880 MHz Duty Cycle: 1:8.3

Probe: ES3DV3 - SN3149 ConvF(5.03, 5.03, 5.03)

Tilt Middle/Area Scan (51x121x1): Measurement grid: dx=10mm, dy=10mm

Maximum value of SAR (interpolated) = 0.299 mW/g

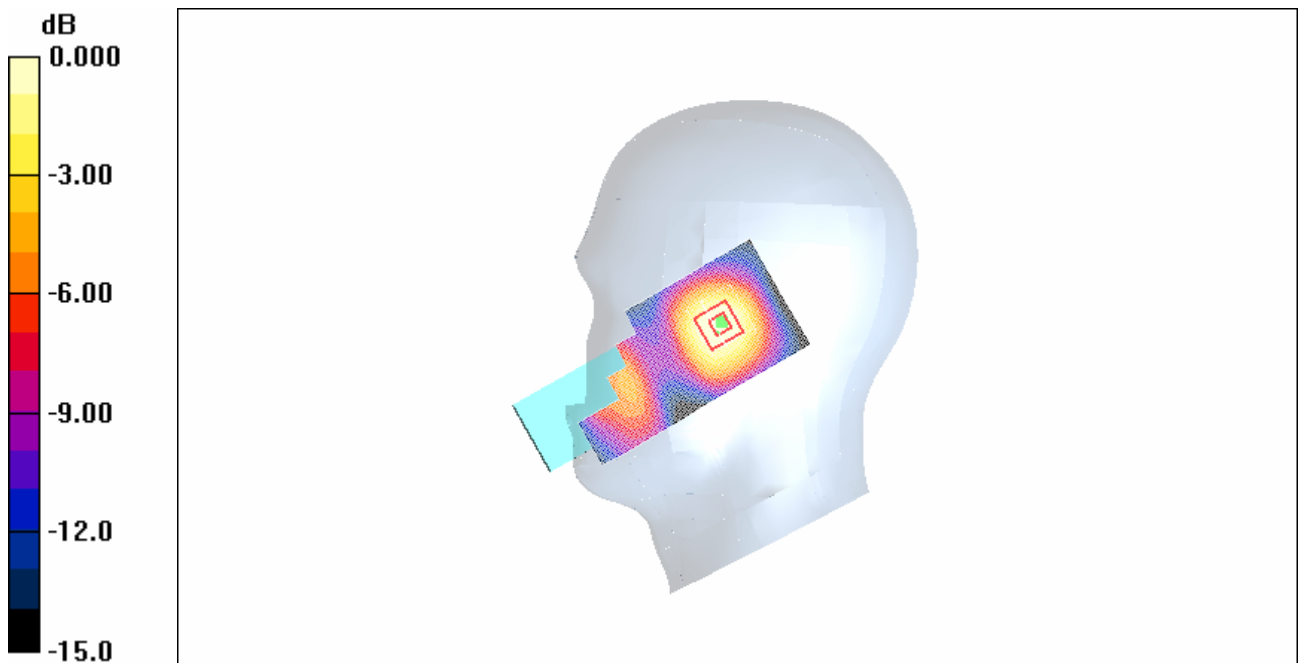
Tilt Middle/Zoom Scan (7x7x7)/Cube 0: Measurement grid: dx=5mm, dy=5mm, dz=5mm

Reference Value = 6.86 V/m; Power Drift = -0.117 dB

Peak SAR (extrapolated) = 0.379 W/kg

SAR(1 g) = 0.255 mW/g; SAR(10 g) = 0.155 mW/g

Maximum value of SAR (measured) = 0.265 mW/g



0 dB = 0.265mW/g

Fig.30 1900 MHz CH661

1900 Right Tilt Low

Date/Time: 2009-5-26 10:43:27

Electronics: DAE4 Sn771

Medium: 1900 Head

Medium parameters used (interpolated): $f = 1850.2$ MHz; $\sigma = 1.38$ mho/m; $\epsilon_r = 39.3$; $\rho = 1000$ kg/m³

Ambient Temperature: 23.3°C Liquid Temperature: 22.5°C

Communication System: GSM 1900MHz Frequency: 1850.2 MHz Duty Cycle: 1:8.3

Probe: ES3DV3 - SN3149 ConvF(5.03, 5.03, 5.03)

Tilt Low/Area Scan (51x121x1): Measurement grid: dx=10mm, dy=10mm

Maximum value of SAR (interpolated) = 0.296 mW/g

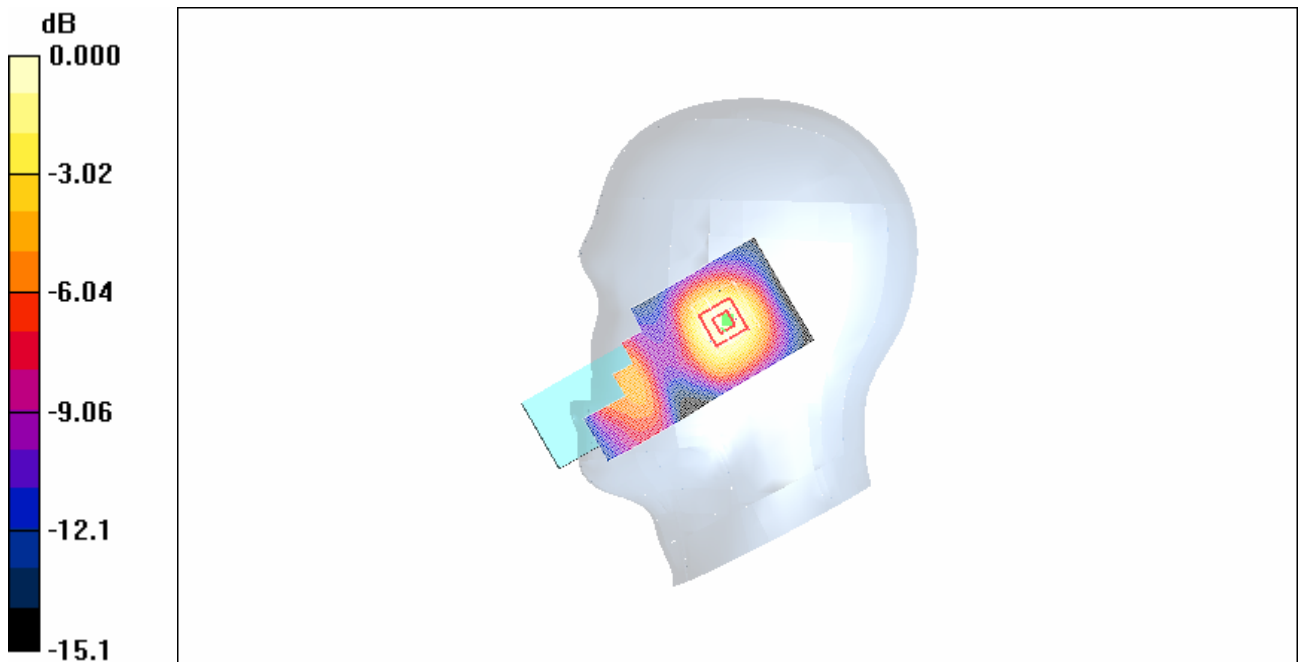
Tilt Low/Zoom Scan (7x7x7)/Cube 0: Measurement grid: dx=5mm, dy=5mm, dz=5mm

Reference Value = 6.97 V/m; Power Drift = -0.192 dB

Peak SAR (extrapolated) = 0.373 W/kg

SAR(1 g) = 0.254 mW/g; SAR(10 g) = 0.156 mW/g

Maximum value of SAR (measured) = 0.267 mW/g



0 dB = 0.267mW/g

Fig.31 1900 MHz CH512

1900 Body Towards Ground High With GPRS

Date/Time: 2009-5-26 11:06:55

Electronics: DAE4 Sn771

Medium: Body 1900 MHz

Medium parameters used: $f = 1910$ MHz; $\sigma = 1.57$ mho/m; $\epsilon_r = 52.3$; $\rho = 1000$ kg/m³

Ambient Temperature: 23.3°C Liquid Temperature: 22.5°C

Communication System: GSM 1900MHz GPRS Frequency: 1909.8 MHz Duty Cycle: 1:4

Probe: ES3DV3 - SN3149 ConvF(4.68, 4.68, 4.68)

Towards Ground High/Area Scan (51x131x1): Measurement grid: dx=10mm, dy=10mm

Maximum value of SAR (interpolated) = 0.351 mW/g

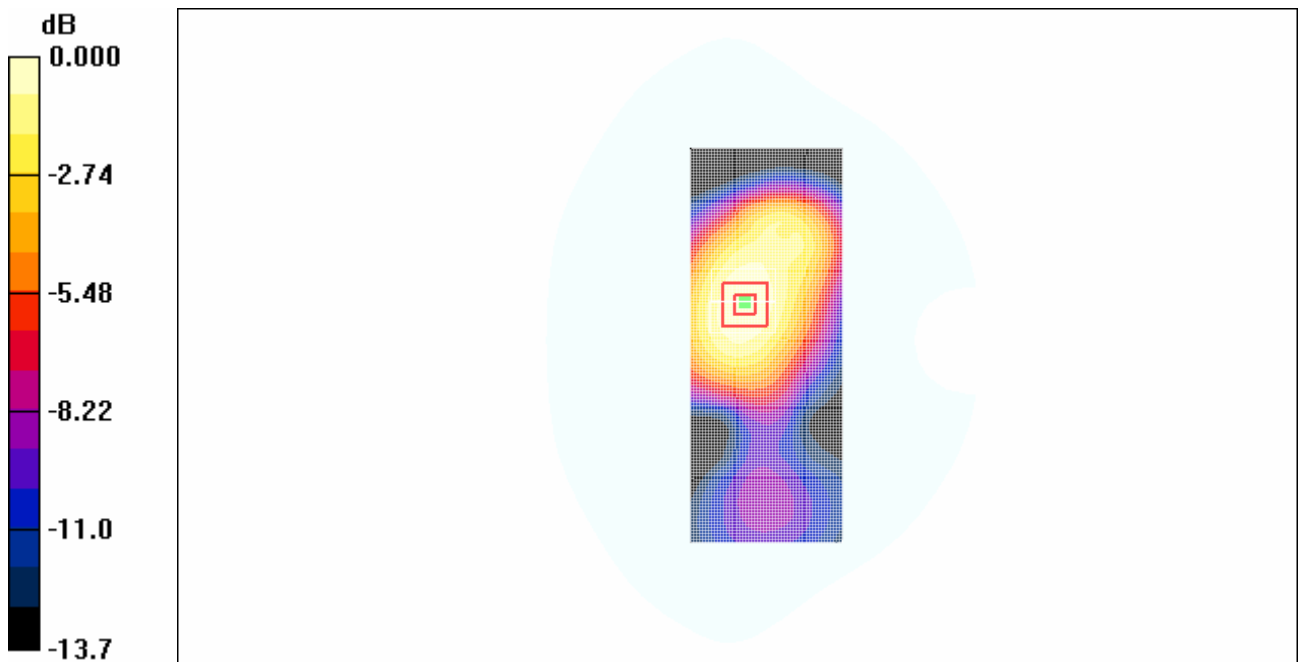
Towards Ground High/Zoom Scan (7x7x7)/Cube 0: Measurement grid: dx=5mm, dy=5mm, dz=5mm

Reference Value = 13.1 V/m; Power Drift = -0.190 dB

Peak SAR (extrapolated) = 0.499 W/kg

SAR(1 g) = 0.326 mW/g; SAR(10 g) = 0.210 mW/g

Maximum value of SAR (measured) = 0.347 mW/g



0 dB = 0.347mW/g

Fig. 32 1900 MHz CH810

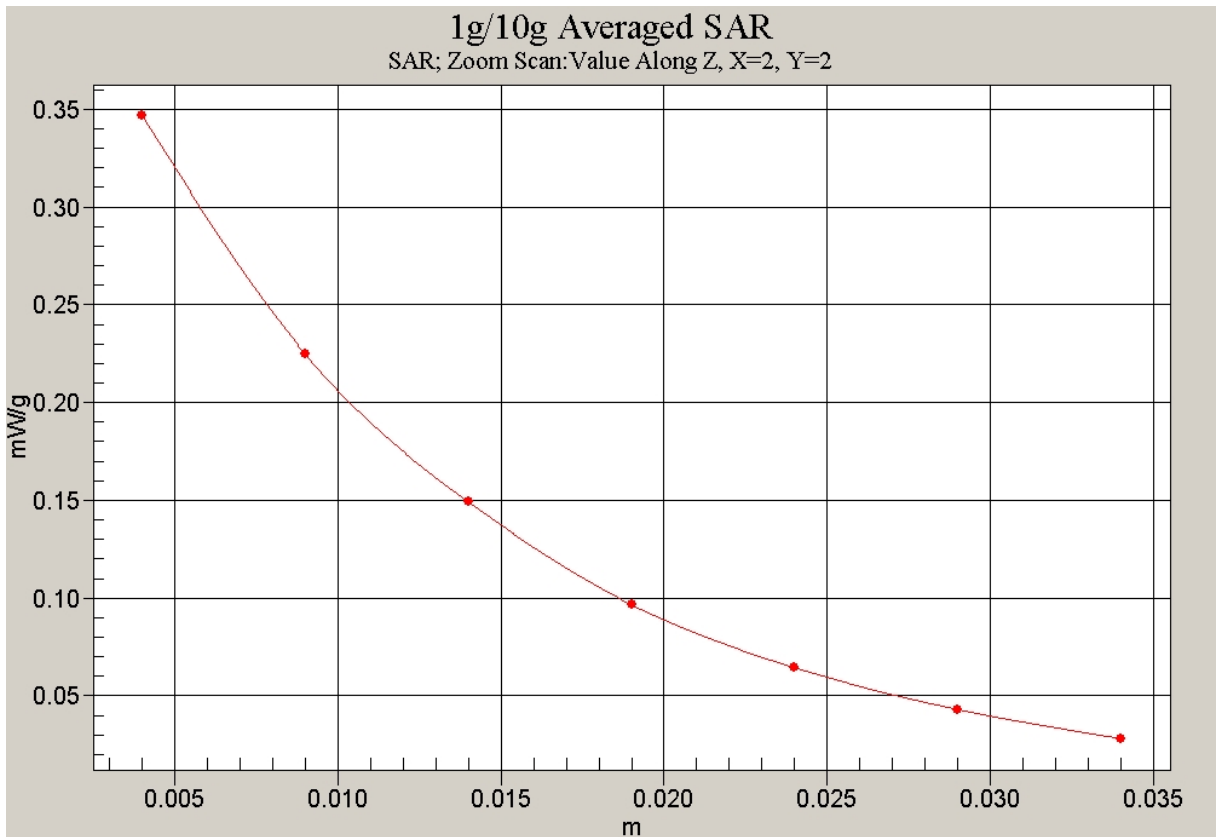


Fig. 33 Z-Scan at power reference point (1900 MHz CH810)

1900 Body Towards Ground Middle With GPRS

Date/Time: 2009-5-26 11:20:48

Electronics: DAE4 Sn771

Medium: Body 1900 MHz

Medium parameters used: $f = 1880$ MHz; $\sigma = 1.54$ mho/m; $\epsilon_r = 52.4$; $\rho = 1000$ kg/m³

Ambient Temperature: 23.3°C Liquid Temperature: 22.5°C

Communication System: GSM 1900MHz GPRS Frequency: 1880 MHz Duty Cycle: 1:4

Probe: ES3DV3 - SN3149 ConvF(4.68, 4.68, 4.68)

Towards Ground Middle/Area Scan (51x131x1): Measurement grid: dx=10mm, dy=10mm

Maximum value of SAR (interpolated) = 0.219 mW/g

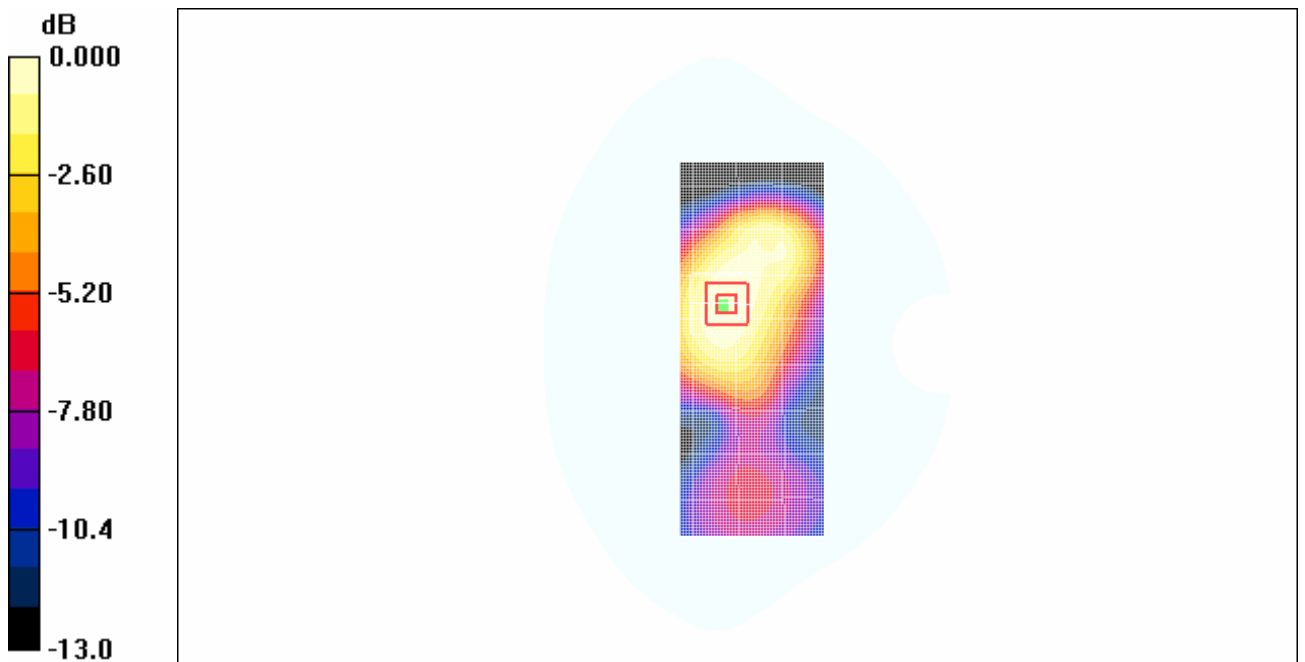
Towards Ground Middle/Zoom Scan (7x7x7)/Cube 0: Measurement grid: dx=5mm, dy=5mm, dz=5mm

Reference Value = 10.2 V/m; Power Drift = -0.174 dB

Peak SAR (extrapolated) = 0.307 W/kg

SAR(1 g) = 0.201 mW/g; SAR(10 g) = 0.132 mW/g

Maximum value of SAR (measured) = 0.214 mW/g



0 dB = 0.214mW/g

Fig. 34 1900 MHz CH661

1900 Body Towards Ground Low With GPRS

Date/Time: 2009-5-26 11:34:42

Electronics: DAE4 Sn771

Medium: Body 1900 MHz

Medium parameters used (interpolated): $f = 1850.2$ MHz; $\sigma = 1.52$ mho/m; $\epsilon_r = 52.4$; $\rho = 1000$ kg/m³

Ambient Temperature: 23.3°C Liquid Temperature: 22.5°C

Communication System: GSM 1900MHz GPRS Frequency: 1850.2 MHz Duty Cycle: 1:4

Probe: ES3DV3 - SN3149 ConvF(4.68, 4.68, 4.68)

Towards Ground Low/Area Scan (51x131x1): Measurement grid: dx=10mm, dy=10mm
Maximum value of SAR (interpolated) = 0.179 mW/g

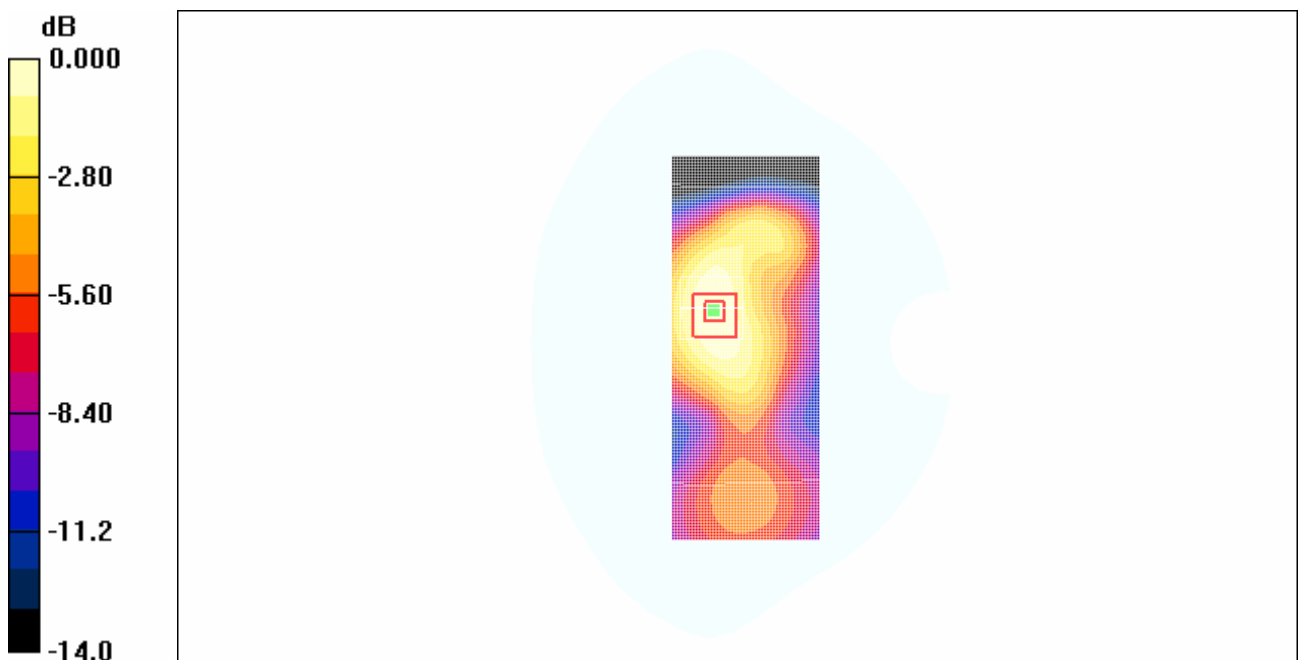
Towards Ground Low/Zoom Scan (7x7x7)/Cube 0: Measurement grid: dx=5mm, dy=5mm, dz=5mm

Reference Value = 9.81 V/m; Power Drift = 0.156 dB

Peak SAR (extrapolated) = 0.254 W/kg

SAR(1 g) = 0.169 mW/g; SAR(10 g) = 0.110 mW/g

Maximum value of SAR (measured) = 0.180 mW/g



0 dB = 0.180mW/g

Fig. 35 1900 MHz CH512

1900 Body Towards Ground High with Headset

Date/Time: 2009-5-26 11:52:01

Electronics: DAE4 Sn771

Medium: Body 1900 MHz

Medium parameters used: $f = 1910$ MHz; $\sigma = 1.57$ mho/m; $\epsilon_r = 52.3$; $\rho = 1000$ kg/m³

Ambient Temperature: 23.3°C Liquid Temperature: 22.5°C

Communication System: GSM 1900MHz GPRS Frequency: 1909.8 MHz Duty Cycle: 1:8.3

Probe: ES3DV3 - SN3149 ConvF(4.68, 4.68, 4.68)

Towards Ground High/Area Scan (51x131x1): Measurement grid: dx=10mm, dy=10mm

Maximum value of SAR (interpolated) = 0.191 mW/g

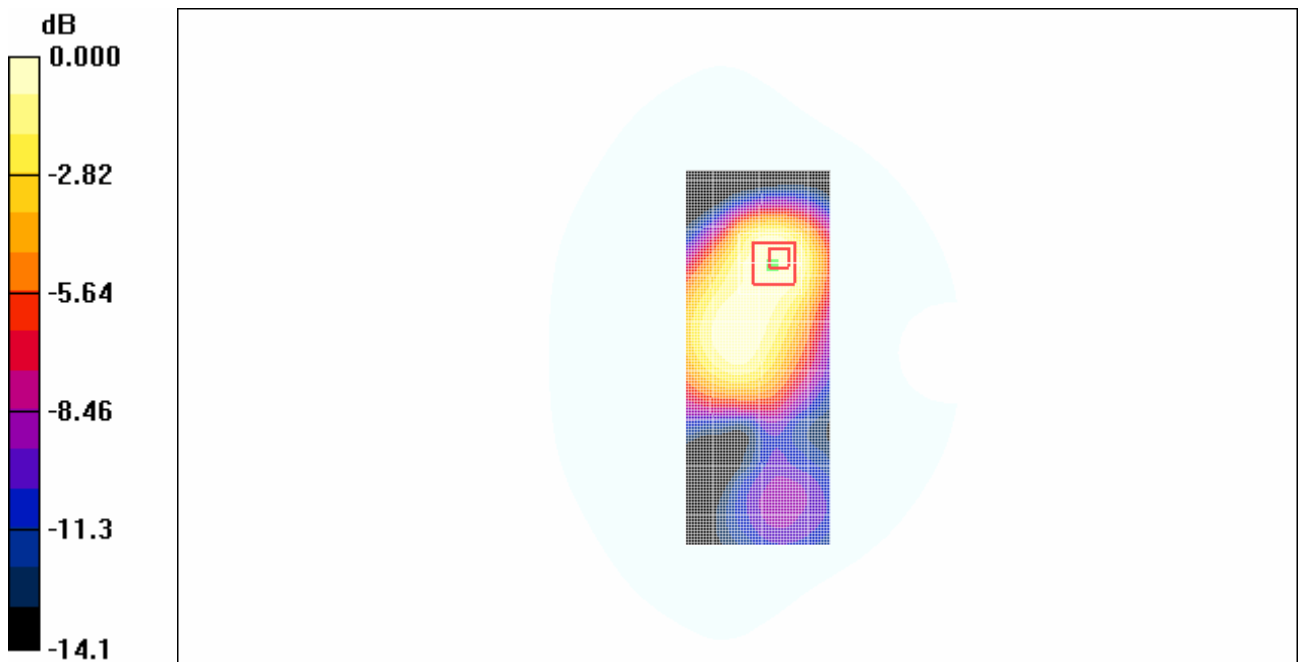
Towards Ground High/Zoom Scan (7x7x7)/Cube 0: Measurement grid: dx=5mm, dy=5mm, dz=5mm

Reference Value = 9.69 V/m; Power Drift = 0.080 dB

Peak SAR (extrapolated) = 0.292 W/kg

SAR(1 g) = 0.170 mW/g; SAR(10 g) = 0.102 mW/g

Maximum value of SAR (measured) = 0.179 mW/g



0 dB = 0.179mW/g

Fig. 36 1900 MHz CH512

850 Left Cheek High

Date/Time: 2009-9-3 13:50:36

Electronics: DAE4 Sn771

Medium: Head GSM900

Medium parameters used (interpolated): $f = 848.8$ MHz; $\sigma = 0.91$ mho/m; $\epsilon_r = 40.5$; $\rho = 1000$ kg/m³

Ambient Temperature: 23.5°C Liquid Temperature: 22.1°C

Communication System: GSM 850 Frequency: 848.8 MHz Duty Cycle: 1:8.3

Probe: ES3DV3 - SN3149 ConvF(6.56, 6.56, 6.56)

Cheek High/Area Scan (51x121x1): Measurement grid: dx=10mm, dy=10mm

Maximum value of SAR (interpolated) = 0.766 mW/g

Cheek High/Zoom Scan (7x7x7)/Cube 0: Measurement grid: dx=5mm, dy=5mm, dz=5mm

Reference Value = 3.01 V/m; Power Drift = -0.168 dB

Peak SAR (extrapolated) = 1.98 W/kg

SAR(1 g) = 0.780 mW/g; SAR(10 g) = 0.437 mW/g

Maximum value of SAR (measured) = 0.783 mW/g

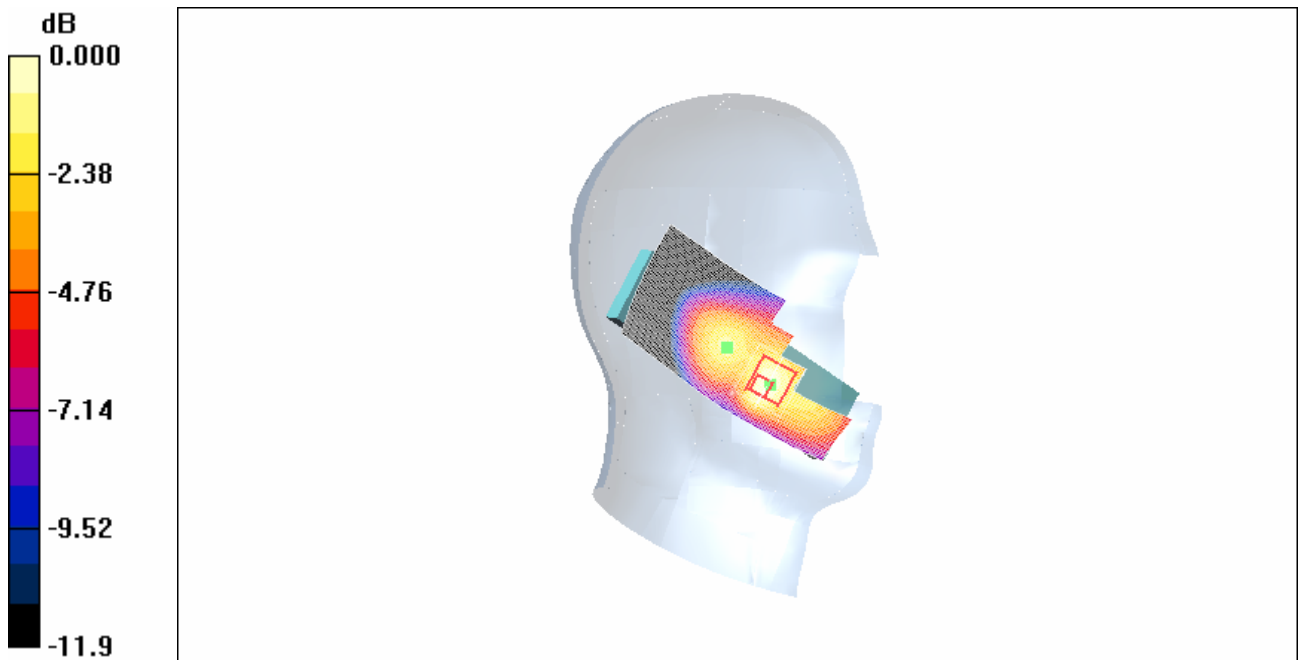


Fig. 37 850MHz CH251

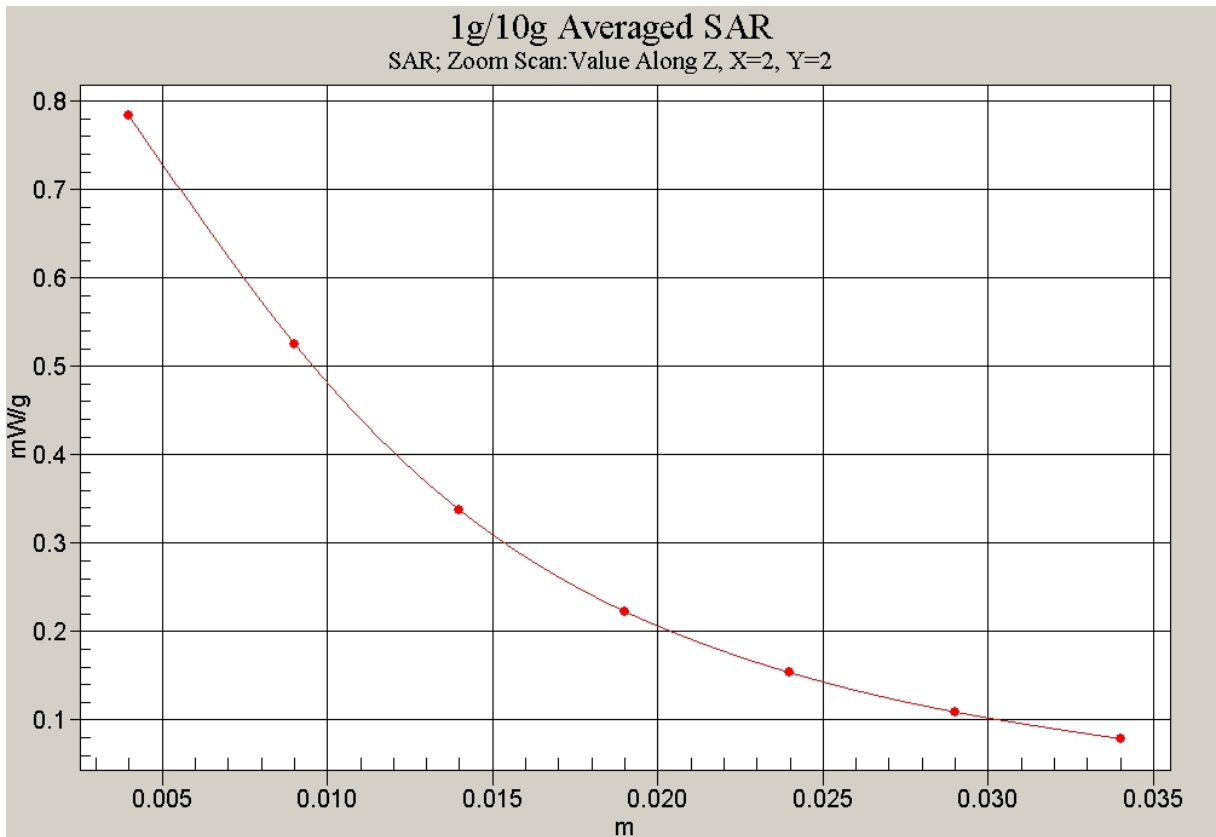


Fig. 38 Z-Scan at power reference point (850 MHz CH251)

850 Body Towards Ground Low With GPRS

Date/Time: 2009-9-3 16:37:10

Electronics: DAE4 Sn771

Medium: 900 Body

Medium parameters used: $f = 825$ MHz; $\sigma = 0.99$ mho/m; $\epsilon_r = 54.1$; $\rho = 1000$ kg/m³

Ambient Temperature: 23.5°C Liquid Temperature: 22.1°C

Communication System: GSM 850 GPRS Frequency: 824.2 MHz Duty Cycle: 1:4

Probe: ES3DV3 - SN3149 ConvF(6.22, 6.22, 6.22)

Towards Ground Low/Area Scan (51x131x1): Measurement grid: dx=10mm, dy=10mm

Maximum value of SAR (interpolated) = 0.954 mW/g

Towards Ground Low/Zoom Scan (7x7x7)/Cube 0: Measurement grid: dx=5mm, dy=5mm, dz=5mm

Reference Value = 31.2 V/m; Power Drift = 0.012 dB

Peak SAR (extrapolated) = 1.18 W/kg

SAR(1 g) = 0.895 mW/g; SAR(10 g) = 0.652 mW/g

Maximum value of SAR (measured) = 0.945 mW/g

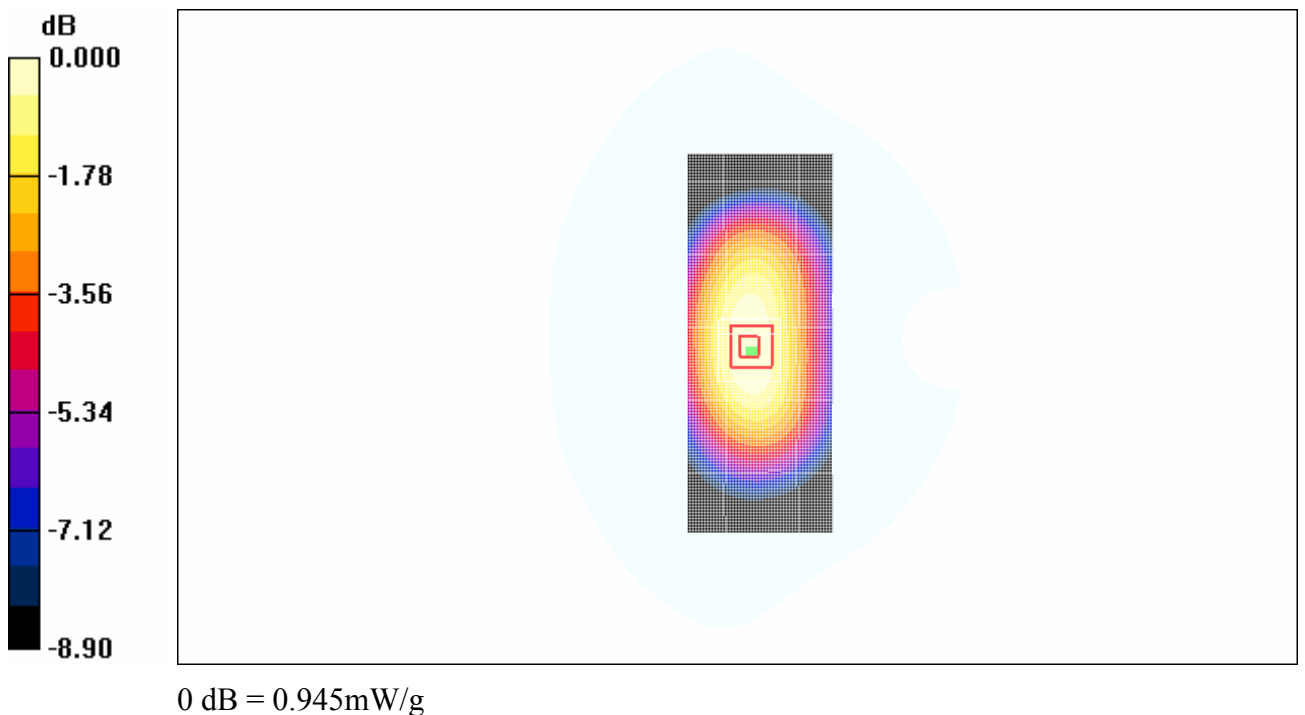


Fig. 39 850 MHz CH128

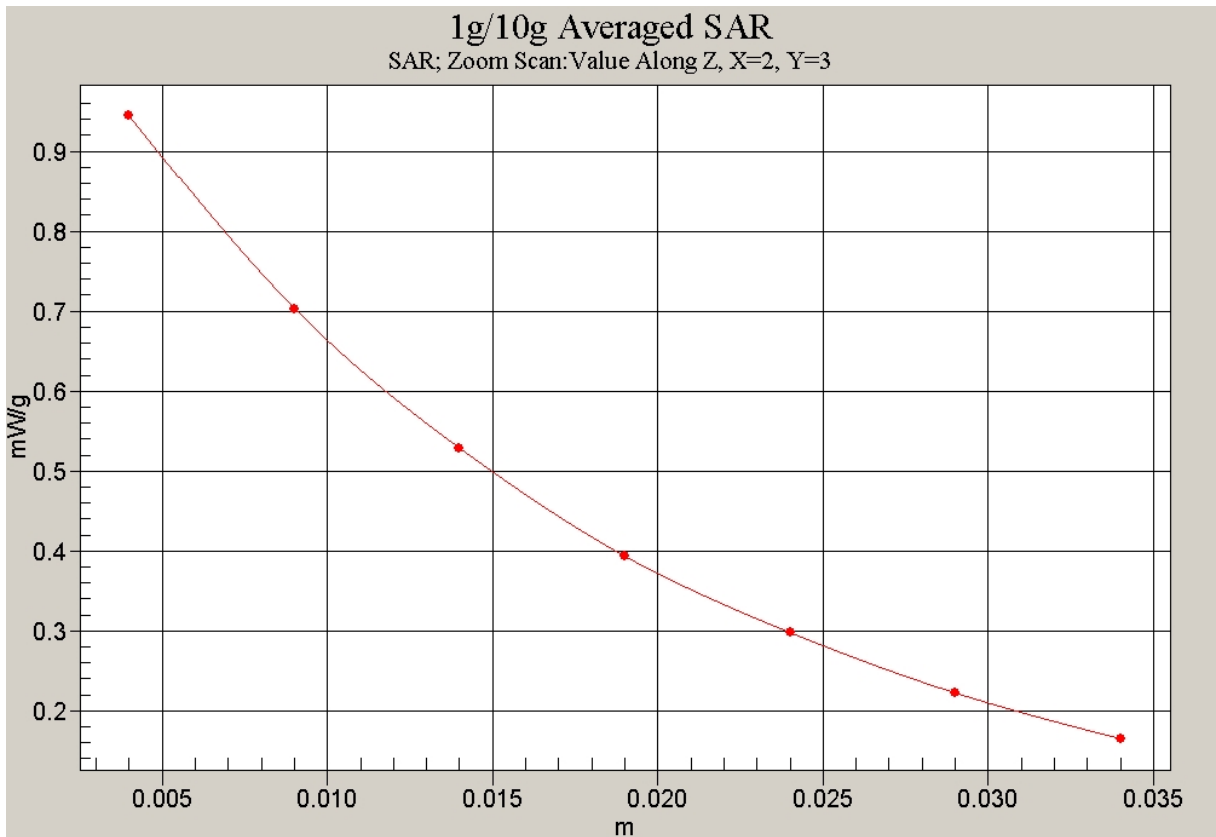


Fig. 40 Z-Scan at power reference point (850 MHz CH128)

1900 Left Cheek High

Date/Time: 2009-9-4 13:46:02

Electronics: DAE4 Sn771

Medium: Head 1900

Medium parameters used: $f = 1910$ MHz; $\sigma = 1.4$ mho/m; $\epsilon_r = 40.3$; $\rho = 1000$ kg/m³

Ambient Temperature: 23.5°C Liquid Temperature: 22.1°C

Communication System: GSM 1900MHz new Frequency: 1909.8 MHz Duty Cycle: 1:8.3

Probe: ES3DV3 - SN3149 ConvF(5.03, 5.03, 5.03)

Cheek High/Area Scan (51x121x1): Measurement grid: dx=10mm, dy=10mm

Maximum value of SAR (interpolated) = 1.32 mW/g

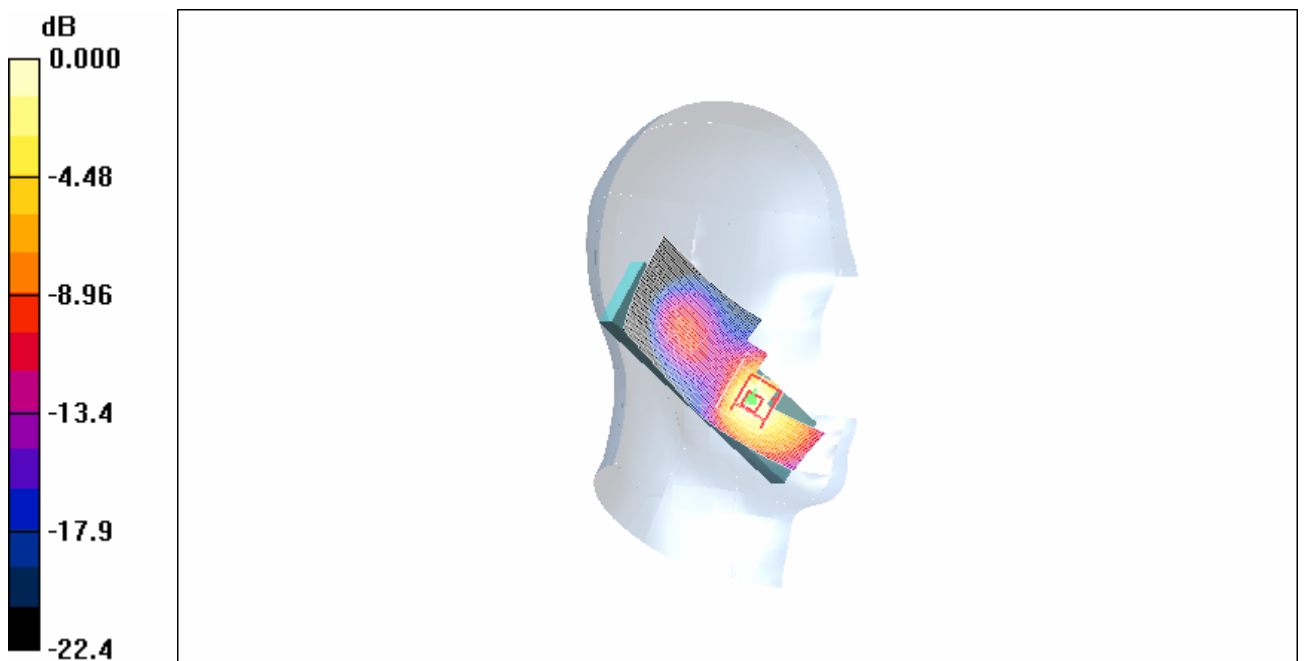
Cheek High/Zoom Scan (7x7x7)/Cube 0: Measurement grid: dx=5mm, dy=5mm, dz=5mm

Reference Value = 2.76 V/m; Power Drift = 0.184 dB

Peak SAR (extrapolated) = 1.89 W/kg

SAR(1 g) = 1.09 mW/g; SAR(10 g) = 0.600 mW/g

Maximum value of SAR (measured) = 1.17 mW/g



0 dB = 1.17mW/g

Fig. 41 1900 MHz CH810

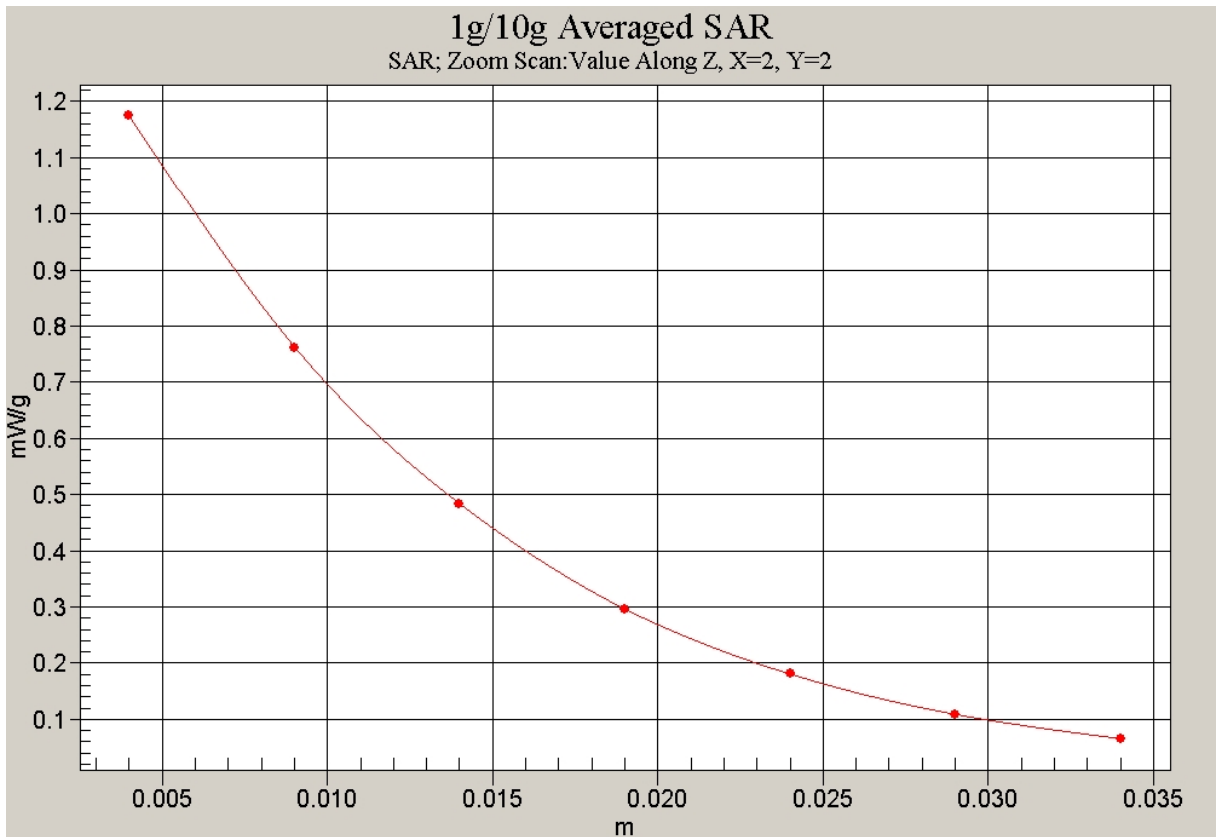


Fig. 42 Z-Scan at power reference point (1900 MHz CH810)

1900 Body Towards Ground High With GPRS

Date/Time: 2009-9-4 15:19:14

Electronics: DAE4 Sn771

Medium: Body 1900

Medium parameters used: $f = 1910$ MHz; $\sigma = 1.55$ mho/m; $\epsilon_r = 52.4$; $\rho = 1000$ kg/m³

Ambient Temperature: 23.5°C Liquid Temperature: 22.1°C

Communication System: GSM 1900MHz new Frequency: 1909.8 MHz Duty Cycle: 1:8.3

Probe: ES3DV3 - SN3149 ConvF(4.68, 4.68, 4.68)

Towards Ground High/Area Scan (51x131x1): Measurement grid: dx=10mm, dy=10mm

Maximum value of SAR (interpolated) = 0.282 mW/g

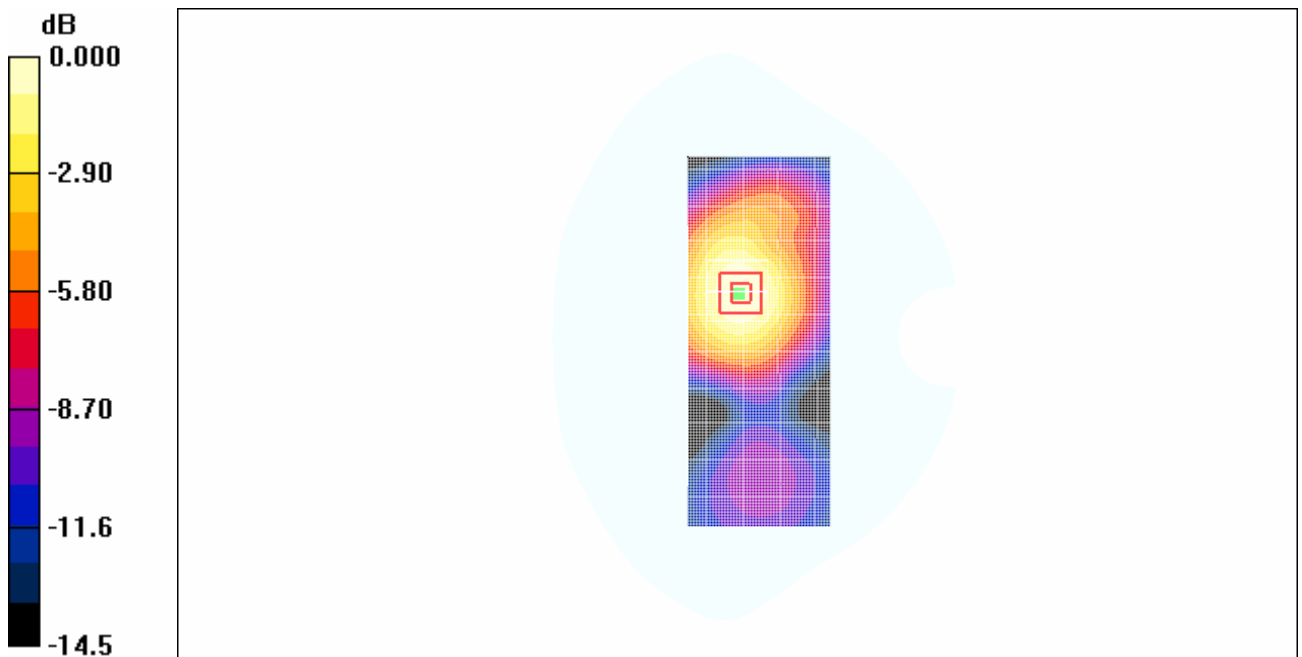
Towards Ground High/Zoom Scan (7x7x7)/Cube 0: Measurement grid: dx=5mm, dy=5mm, dz=5mm

Reference Value = 10.9 V/m; Power Drift = -0.031 dB

Peak SAR (extrapolated) = 0.399 W/kg

SAR(1 g) = 0.260 mW/g; SAR(10 g) = 0.165 mW/g

Maximum value of SAR (measured) = 0.278 mW/g



0 dB = 0.278mW/g

Fig. 43 1900 MHz CH810

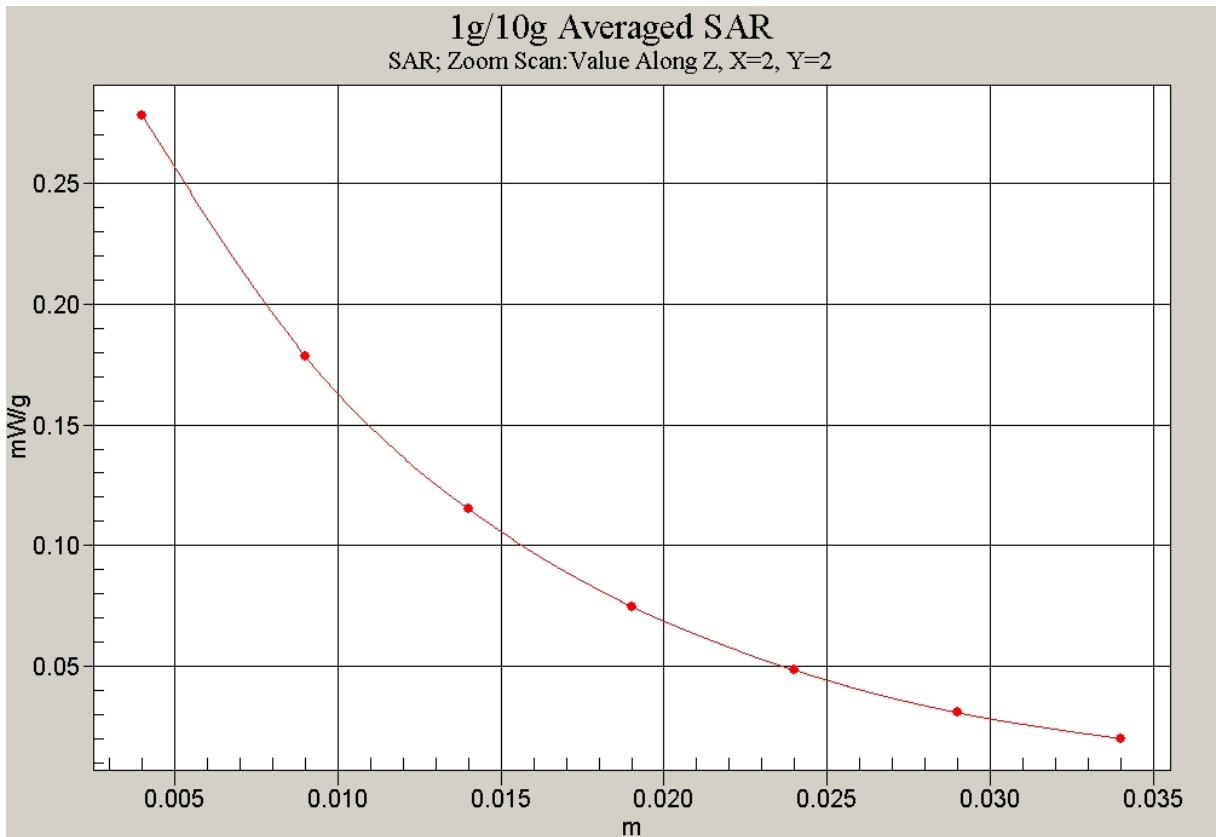


Fig. 44 Z-Scan at power reference point (1900 MHz CH810)

ANNEX D SYSTEM VALIDATION RESULTS

835MHz

Date/Time: 2009-5-25 7:25:31

Electronics: DAE4 Sn771

Medium: Head 835

Medium parameters used: $f = 835 \text{ MHz}$; $\sigma = 0.90 \text{ mho/m}$; $\epsilon_r = 40.4$; $\rho = 1000 \text{ kg/m}^3$

Ambient Temperature: 23.3°C Liquid Temperature: 22.5°C

Communication System: CW Frequency: 835 MHz Duty Cycle: 1:1

Probe: ES3DV3 - SN3149 ConvF(6.56, 6.56, 6.56)

835MHz/Area Scan (101x101x1): Measurement grid: $dx=10\text{mm}$, $dy=10\text{mm}$

Maximum value of SAR (interpolated) = 2.68 mW/g

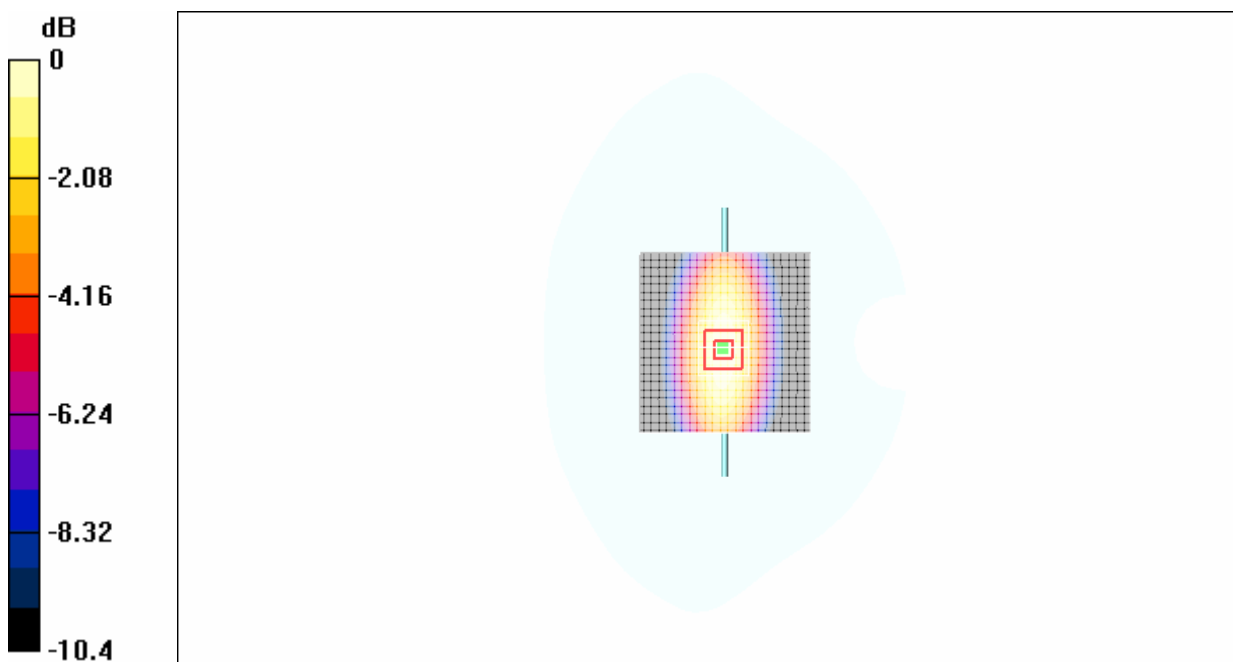
835MHz/Zoom Scan (7x7x7)/Cube 0: Measurement grid: $dx=5\text{mm}$, $dy=5\text{mm}$, $dz=5\text{mm}$

Reference Value = 56.8 V/m; Power Drift = -0.01 dB

Peak SAR (extrapolated) = 3.67 W/kg

SAR(1 g) = 2.50 mW/g; SAR(10 g) = 1.62 mW/g

Maximum value of SAR (measured) = 2.69 mW/g



0 dB = 2.69mW/g

Fig.45 validation 835MHz 250mW

1900MHz

Date/Time: 2009-5-26 7:23:11

Electronics: DAE4 Sn771

Medium: 1900 Head

Medium parameters used: $f = 1900 \text{ MHz}$; $\sigma = 1.42 \text{ mho/m}$; $\epsilon_r = 39.2$; $\rho = 1000 \text{ kg/m}^3$

Ambient Temperature: 23.3°C Liquid Temperature: 22.5°C

Communication System: CW Frequency: 1900 MHz Duty Cycle: 1:1

Probe: ES3DV3 - SN3149 ConvF(5.03, 5.03, 5.03)

System Validation/Area Scan (101x101x1): Measurement grid: $dx=10\text{mm}$, $dy=10\text{mm}$
Maximum value of SAR (interpolated) = 11.2 mW/g

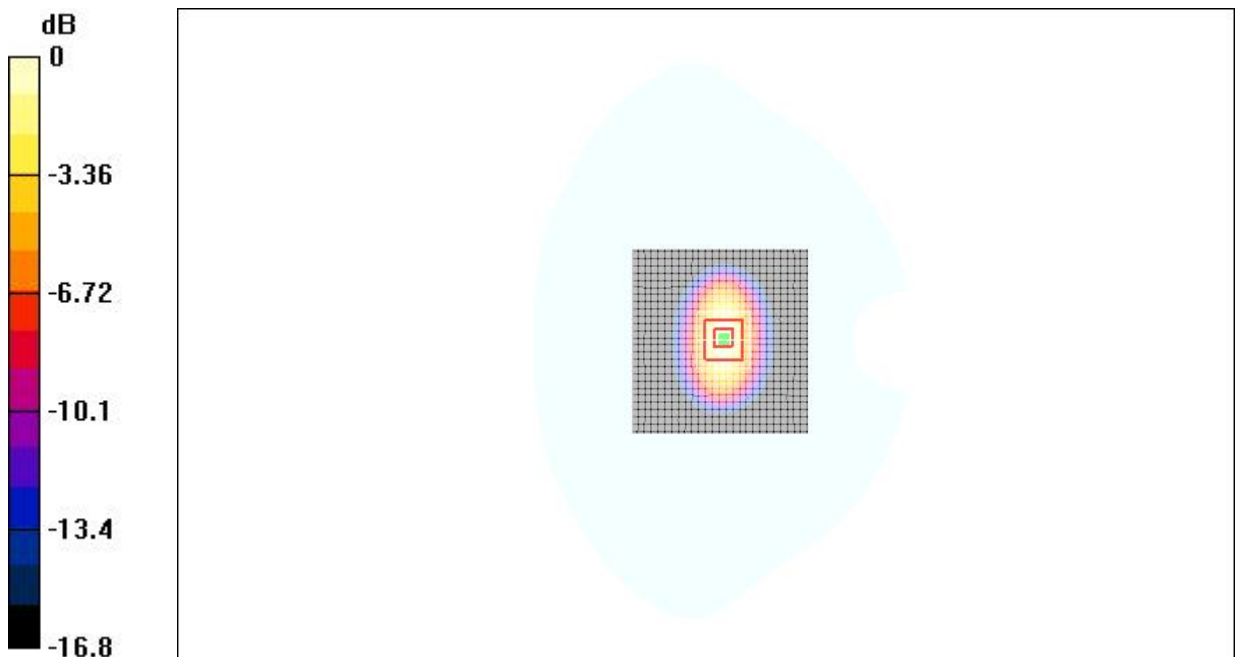
System Validation/Zoom Scan (7x7x7)/Cube 0: Measurement grid: $dx=5\text{mm}$,
 $dy=5\text{mm}$, $dz=5\text{mm}$

Reference Value = 92.1 V/m; Power Drift = 0.1 dB

Peak SAR (extrapolated) = 16.9 W/kg

SAR(1 g) = 9.91 mW/g; SAR(10 g) = 5.27 mW/g

Maximum value of SAR (measured) = 11.3 mW/g



0 dB = 11.3mW/g

Fig.46validation 1900MHz 250mW

835MHz

Date/Time: 2009-9-3 8:09:22

Electronics: DAE4 Sn771

Medium: Head 835

Medium parameters used: $f = 835 \text{ MHz}$; $\sigma = 0.91 \text{ mho/m}$; $\epsilon_r = 40.2$; $\rho = 1000 \text{ kg/m}^3$

Ambient Temperature: 23.5°C Liquid Temperature: 22.1°C

Communication System: CW Frequency: 835 MHz Duty Cycle: 1:1

Probe: ES3DV3 - SN3149 ConvF(6.56, 6.56, 6.56)

835MHz/Area Scan (101x101x1): Measurement grid: $dx=10\text{mm}$, $dy=10\text{mm}$

Maximum value of SAR (interpolated) = 2.75 mW/g

835MHz/Zoom Scan (7x7x7)/Cube 0: Measurement grid: $dx=5\text{mm}$, $dy=5\text{mm}$, $dz=5\text{mm}$

Reference Value = 57.2 V/m; Power Drift = -0.005 dB

Peak SAR (extrapolated) = 3.72 W/kg

SAR(1 g) = 2.54 mW/g; SAR(10 g) = 1.65 mW/g

Maximum value of SAR (measured) = 2.71 mW/g

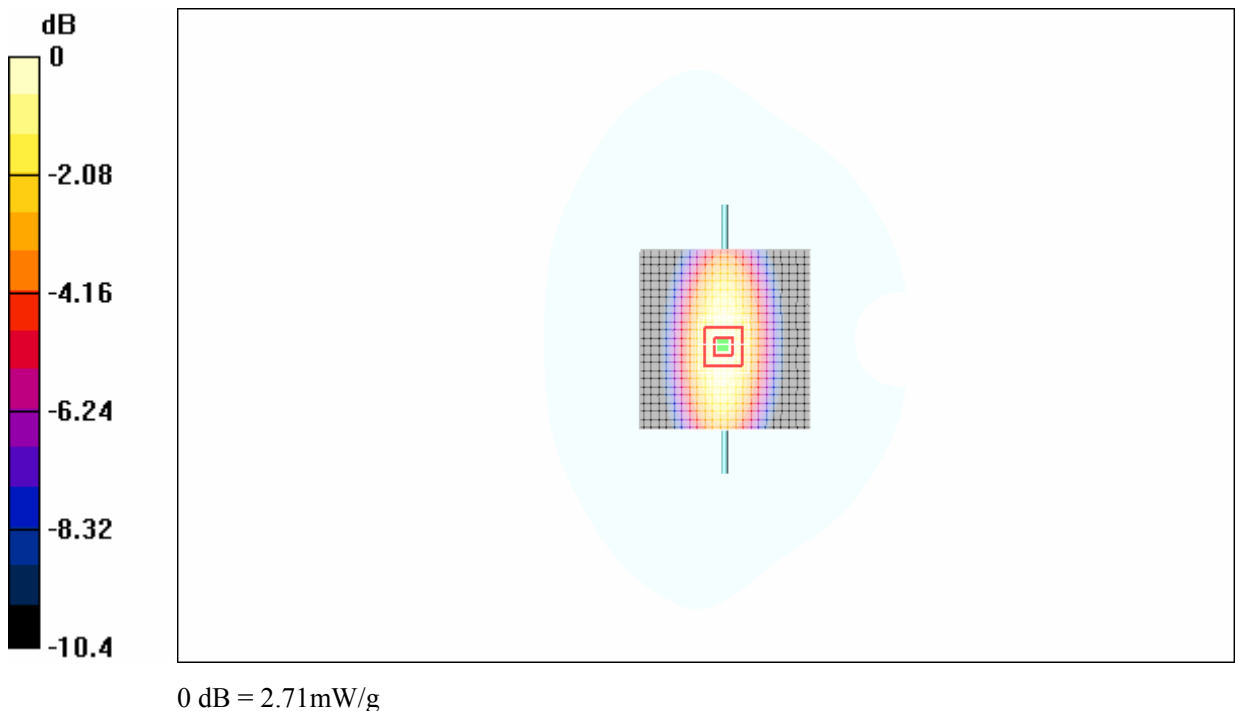


Fig.47 validation 835MHz 250mW

1900MHz

Date/Time: 2009-9-4 7:50:2

Electronics: DAE4 Sn771

Medium: 1900 Head

Medium parameters used: $f = 1900 \text{ MHz}$; $\sigma = 1.39 \text{ mho/m}$; $\epsilon_r = 40.5$; $\rho = 1000 \text{ kg/m}^3$

Ambient Temperature: 23.5°C Liquid Temperature: 22.1°C

Communication System: CW Frequency: 1900 MHz Duty Cycle: 1:1

Probe: ES3DV3 - SN3149 ConvF(5.03, 5.03, 5.03)

System Validation/Area Scan (101x101x1): Measurement grid: $dx=10\text{mm}$, $dy=10\text{mm}$
Maximum value of SAR (interpolated) = 11.0 mW/g

System Validation/Zoom Scan (7x7x7)/Cube 0: Measurement grid: $dx=5\text{mm}$,
 $dy=5\text{mm}$, $dz=5\text{mm}$

Reference Value = 91.8 V/m ; Power Drift = 0.056 dB

Peak SAR (extrapolated) = 16.7 W/kg

SAR(1 g) = 9.90 mW/g ; SAR(10 g) = 5.22 mW/g

Maximum value of SAR (measured) = 11.1 mW/g

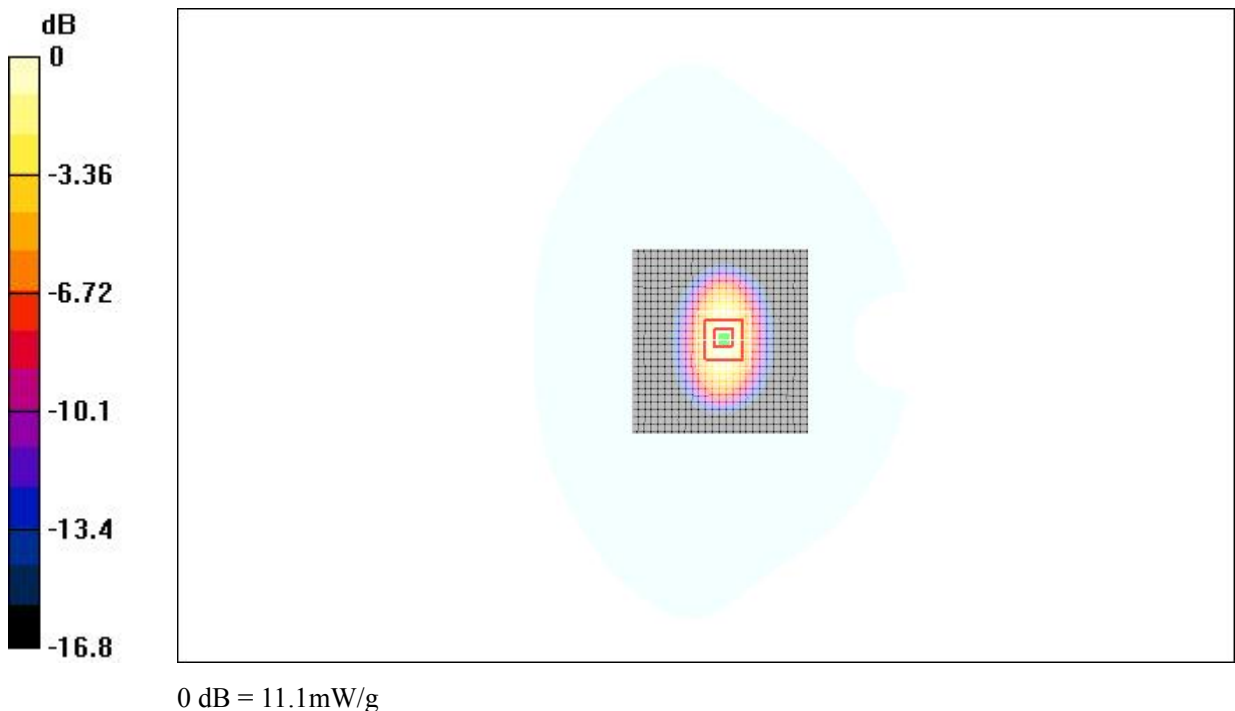


Fig.48validation 1900MHz 250mW

ANNEX E PROBE CALIBRATION CERTIFICATE

**Calibration Laboratory of
Schmid & Partner
Engineering AG**
Zeughausstrasse 43, 8004 Zurich, Switzerland



S Schweizerischer Kalibrierdienst
C Service suisse d'étalonnage
S Servizio svizzero di taratura
S Swiss Calibration Service

Accredited by the Swiss Accreditation Service (SAS)
The Swiss Accreditation Service is one of the signatories to the EA
Multilateral Agreement for the recognition of calibration certificates

Accreditation No.: **SCS 108**

Client **TMC China**

Certificate No: **ES3DV3-3149_Oct08**

CALIBRATION CERTIFICATE

Object	ES3DV3-SN: 3149
Calibration procedure(s)	QA CAL-01.v6 Calibration procedure for dosimetric E-field probes
Calibration date:	October 1, 2008
Condition of the calibrated item	In Tolerance


This calibration certify documents the traceability to national standards, which realize the physical units of measurements(SI).
The measurements and the uncertainties with confidence probability are given on the following pages and are part of the certificate.
All calibrations have been conducted at an environment temperature (22±3)°C and humidity<70%

Calibration Equipment used (M&TE critical for calibration)

Primary Standards	ID#	Cal Data (Calibrated by, Certification NO.)	Scheduled Calibration
Power meter E4419B	GB41293874	6-May-08 (METAS, NO. 251-00388)	May-09
Power sensor E4412A	MY41495277	6-May-08 (METAS, NO. 251-00388)	May-09
Reference 3 dB Attenuator	SN:S5054 (3c)	11-Aug-08 (METAS, NO. 251-00403)	Aug-09
Reference 20 dB Attenuator	SN:S5086 (20b)	4-May-08 (METAS, NO. 251-00389)	May-09
Reference 30 dB Attenuator	SN:S5129 (30b)	11-Aug-08 (METAS, NO. 251-00404)	Aug-09
DAE4	SN:617	11-Jun-08 (SPEAG, NO.DAE4-907_Jun08)	Jun-09
Reference Probe ES3DV2	SN: 3013	13-Jan-08 (SPEAG, NO. ES3-3013_Jan08)	Jan-09

Secondary Standards	ID#	Check Data (in house)	Scheduled Calibration
RF generator HP8648C	US3642U01700	4-Aug-99(SPEAG, in house check Oct-07)	In house check: Oct-09
Network Analyzer HP 8753E	US37390585	18-Oct-01(SPEAG, in house check Nov-07)	In house check: Nov-09

Calibrated by:	Katja Pokovic	Technical Manager	
----------------	----------------------	--------------------------	---

Approved by:	Niels Kuster	Quality Manager	
--------------	---------------------	------------------------	--

Issued: **October 1, 2008**

This calibration certificate shall not be reported except in full without written approval of the laboratory.