



# TEST REPORT

No. 2008TAR028

for

**TCT Mobile Suzhou Limited**

**OT-V670A**

**Type: Luna A**

with

**Hardware Version: Proto**

**Software Version: V19q**

**Issued Date: Jul 8th, 2008**



**No. DAT-P-114/01-01**

**Note:**

The test results in this test report relate only to the devices specified in this report. This report shall not be reproduced except in full without the written approval of TMC Beijing.

**Test Laboratory:**

TMC Beijing, Telecommunication Metrology Center of Ministry of Information Industry

No. 52, Huayuan Bei Road, Haidian District, Beijing, P. R. China 100083.

Tel:+86(0)10-62303288-2105, Fax:+86(0)10-62304793 Email:welcome@emcite.com. [www.emcite.com](http://www.emcite.com)

©Copyright. All rights reserved by TMC Beijing.

## **CONTENTS**

<b>1. TEST LABORATORY.....</b>	<b>3</b>
1.1. TESTING LOCATION.....	3
1.2. TESTING ENVIRONMENT.....	3
1.3. PROJECT DATA.....	3
1.4. SIGNATURE.....	3
<b>2. CLIENT INFORMATION.....</b>	<b>4</b>
2.1. APPLICANT INFORMATION.....	4
2.2. MANUFACTURER INFORMATION.....	4
<b>3. EQUIPMENT UNDER TEST (EUT) AND ANCILLARY EQUIPMENT (AE) .....</b>	<b>5</b>
3.1. ABOUT EUT.....	5
3.2. INTERNAL IDENTIFICATION OF EUT USED DURING THE TEST .....	5
3.3. INTERNAL IDENTIFICATION OF AE USED DURING THE TEST.....	5
3.4. GENERAL DESCRIPTION.....	6
<b>4. REFERENCE DOCUMENTS .....</b>	<b>6</b>
4.1. REFERENCE DOCUMENTS FOR TESTING.....	6
<b>5. LABORATORY ENVIRONMENT .....</b>	<b>6</b>
<b>6. SUMMARY OF TEST RESULTS.....</b>	<b>7</b>
<b>7. TEST EQUIPMENTS UTILIZED.....</b>	<b>7</b>
<b>ANNEX A: EUT PHOTOGRAPH.....</b>	<b>9</b>
<b>ANNEX B: MEASUREMENT RESULTS.....</b>	<b>17</b>
B.1 OUTPUT POWER (§22.913(A)/§24.232(B)) .....	17
B.2 EMISSION LIMIT (§2.1051/§24.238).....	20
B.3 CONDUCTED EMISSION.....	31
B.4 FREQUENCY STABILITY (§2.1055/§24.235).....	36
B.5 OCCUPIED BANDWIDTH (§2.1049(H)(I)) .....	38
B.6 EMISSION BANDWIDTH (§22.917(B)/§24.238(B)) .....	46
B.7 BAND EDGE COMPLIANCE.....	54
B.8 CONDUCTED SPURIOUS EMISSION (§2.1057/§22.917/§24.238).....	58
<b>ANNEX C: TEST LAYOUT .....</b>	<b>68</b>

## 1. Test Laboratory

### 1.1. Testing Location

Company Name: TMC Beijing, Telecommunication Metrology Center of MII  
Address: No 52, Huayuan beilu, Haidian District, Beijing,P.R.China  
Postal Code: 100083  
Telephone: 00861062303288  
Fax: 00861062304793

### 1.2. Testing Environment

Normal Temperature: 15-35℃  
Relative Humidity: 20-75%

### 1.3. Project data

Testing Start Date: Jun 20,2008  
Testing End Date: Jun 29,2008

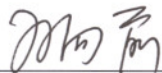
### 1.4. Signature



---

Zi Xiaogang

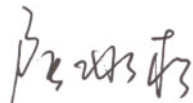
(Prepared this test report)



---

Sun Xiangqian

(Reviewed this test report)



---

Lu Bingsong

Deputy Director of the laboratory

(Approved this test report)

## **2. Client Information**

### **2.1. Applicant Information**

Company Name: TCT Mobile Suzhou Limited  
Address /Post: 4F, South Building, No.2966, JinKe Road, Zhangjiang High-Tech Park  
Shanghai 201203, P.R.China  
City: Shanghai  
Postal Code: 201203  
Country: China  
Telephone: 0086-21-61460883  
Fax: 0086-21-61460602

### **2.2. Manufacturer Information**

Company Name: TCT Mobile Suzhou Limited  
Address /Post: 4F, South Building, No.2966, JinKe Road, Zhangjiang High-Tech Park  
Shanghai 201203, P.R.China  
City: Shanghai  
Postal Code: 201203  
Country: China  
Telephone: 0086-21-61460883  
Fax: 0086-21-61460602

### **3. Equipment Under Test (EUT) and Ancillary Equipment (AE)**

#### **3.1. About EUT**

Description	OT-V670A
Model	Luna A
FCC ID	RAD082
Frequency	PCS 1900 MHz; GSM 850 MHz
Antenna	Internal
Power supply	Battery or Charger (AC Adaptor)
Output power	31.33 dBm maximum EIRP measured for PCS1900
Extreme vol. Limits	3.5VDC to 4.2VDC (nominal: 3.7 VDC)
Extreme temp. Tolerance	-30°C to +50°C

Note: Photographs of EUT are shown in ANNEX A of this test report. Components list, please refer to documents of the manufacturer; it is also included in the original test record of Telecommunication Metrology Center of MII of People's Republic of China.

#### **3.2. Internal Identification of EUT used during the test**

<b>EUT ID*</b>	<b>SN or IMEI</b>	<b>HW Version</b>	<b>SW Version</b>
EUT1	011492000001236	Proto	V19q

\*EUT ID: is used to identify the test sample in the lab internally.

#### **3.3. Internal Identification of AE used during the test**

<b>AE ID*</b>	<b>Description</b>	<b>SN</b>
AE1	Battery	B08885063FA
AE2	Travel Adapter	S003HU0500050
AE3	Travel Adapter	S003FU0500040
AE4	Data Cable	/

##### AE1

Model	T5001418AAAA
Manufacturer	BYD
Capacitance	750mAh
Nominal Voltage	3.7V

##### AE2

Model	T5002684AGAA
Manufacturer	Tenpao
Length of DC line	150cm

AE3

Model T5000436AGAA  
 Manufacturer Tenpao  
 Length of DC line 0cm

AE4

Model T5001431ABAA  
 Manufacturer /  
 Length of DC line 120cm

\*AE ID: is used to identify the test sample in the lab internally.

### 3.4. General Description

The Equipment Under Test (EUT) is a model of GSM/GPRS 850/1900 dual band mobile phone with integrated antenna. It consists of Hand Telephone Set and normal options: lithium battery, charger.

Manual and specifications of the EUT were provided to fulfil the test.

Samples undergoing test were selected by the Client.

## 4. Reference Documents

### 4.1. Reference Documents for testing

The following documents listed in this section are referred for testing.

Reference	Title	Version
FCC Part 24	PERSONAL COMMUNICATIONS SERVICES	V 10.1.06
FCC Part 22	PUBLIC MOBILE SERVICES	V 10.1.06

## 5. LABORATORY ENVIRONMENT

**Semi-anechoic chamber** (23 meters×17meters×10meters) did not exceed following limits along the EMC testing:

Temperature	Min. = 15 °C, Max. = 30 °C
Relative humidity	Min. = 30 %, Max. = 60 %
Shielding effectiveness	> 110 dB
Electrical insulation	> 10 kΩ
Ground system resistance	< 0.5 Ω
Normalised site attenuation (NSA)	< ±3.2 dB, 10 m distance, from 30 to 1000 MHz
Uniformity of field strength	Between 0 and 6 dB, from 80 to 2000 MHz

**Control room** did not exceed following limits along the EMC testing:

Temperature	Min. = 15 °C, Max. = 35 °C
Relative humidity	Min. =30 %, Max. = 60 %
Shielding effectiveness	> 110 dB
Electrical insulation	> 10 kΩ
Ground system resistance	< 0.5 Ω

**Conducted chamber** did not exceed following limits along the EMC testing:

Temperature	Min. = 15 °C, Max. = 30 °C
Relative humidity	Min. = 30 %, Max. = 60 %
Shielding effectiveness	> 110 dB
Electrical insulation	> 10 kΩ
Ground system resistance	< 0.5 Ω

**Fully-anechoic chamber** (6.8 meters×3.08 meters×3.53 meters) did not exceed following limits along the EMC testing:

Temperature	Min. = 15 °C, Max. = 30 °C
Relative humidity	Min. = 30 %, Max. = 60 %
Shielding effectiveness	> 110 dB
Electrical insulation	> 10 kΩ
Ground system resistance	< 0.5 Ω
Uniformity of field strength	Between 0 and 6 dB, from 80 to 2000 MHz

## 6. SUMMARY OF TEST RESULTS

Items	List	Clause in FCC rules	Verdict
1	Output Power	22.913(a)/24.232(b)	P
2	Emission Limit	2.1051/22.917/24.238	P
3	Conducted Emission	15.107/207	P
4	Frequency Stability	2.1055/24.235	P
5	Occupied Bandwidth	2.1049(h)(i)	P
6	Emission Bandwidth	22.917(b)/24.238(b)	P
7	Band Edge Compliance	22.917(b)/24.238(b)	P
8	Conducted Spurious Emission	2.1057/22.917/24.238	P

## 7. Test Equipments Utilized

NO.	NAME	TYPE	SERIES NUMBER	PRODUCER	CAL DUE DATE
1	Test Receiver	ESS	847151/015	R&S	2008-10-30
2	Test Receiver	ESI40	831564/002	R&S	2009-2-11
3	BiLog Antenna	3142B	9908-1403	EMCO	2009-1-16
4	BiLog Antenna	3142B	9908-1405	EMCO	2009-9-19
5	Signal Generator	SMT06	831285/005	R&S	2008-12-26
6	Signal Generator	SMP04	100070	R&S	2009-4-20
7	LISN	ESH2-Z5	829991/012	R&S	2008-8
8	Spectrum Analyzer	FSU26	200030	R&S	2009-6-18

9	Universal Radio Communication Tester	CMU200	100680	R&S	2008-8-23
10	Dual-Ridge Waveguide Horn Antenna	3115	9906-5827	EMCO	2009-3
11	Dual-Ridge Waveguide Horn Antenna	3116	2663	EMCO	2009-3
12	Dual-Ridge Waveguide Horn Antenna	3116	2661	EMCO	2009-3
13	Climatic chamber	PL-2G	343074	ESPEC	2009-5-15



**ANNEX A: EUT photograph**

**External Photo**



**Mobile Phone**



**Mobile Phone**



Mobile Phone



Charger AE2 (AC/DC Adapter)



Label of Charger AE2(AC/DC Adapter)



Charger AE3 (AC/DC Adapter)



Label of Charger AE3(AC/DC Adapter)



Data Cable



Battery

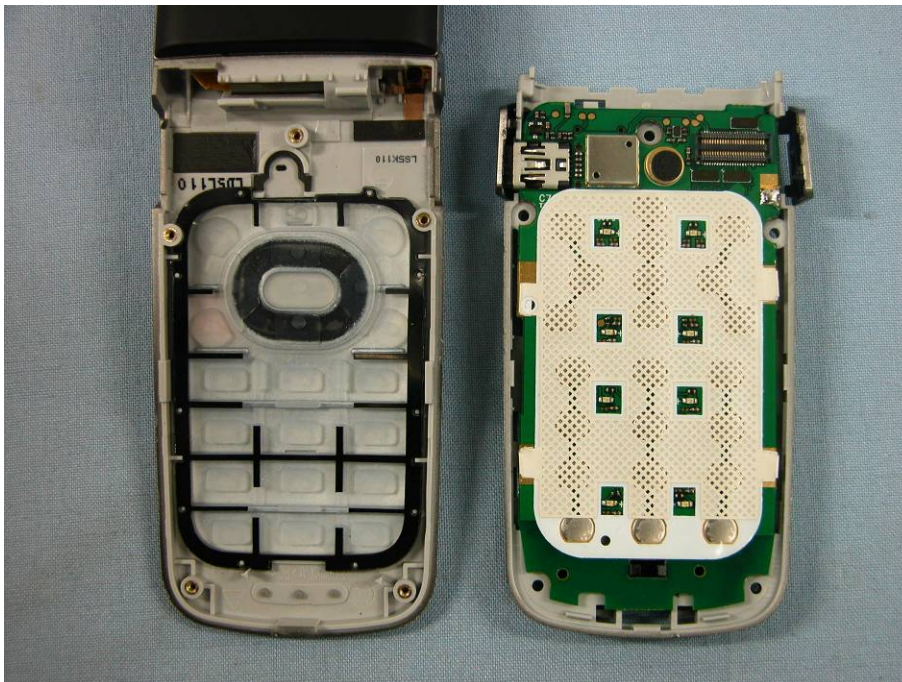


Battery

Internal Photo



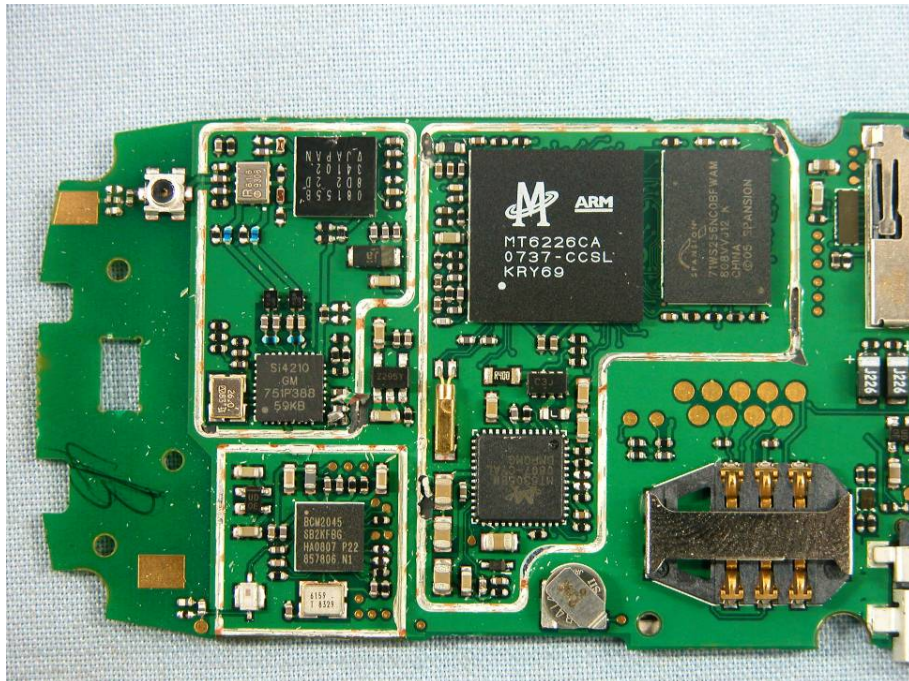
Mobile phone Disassembly



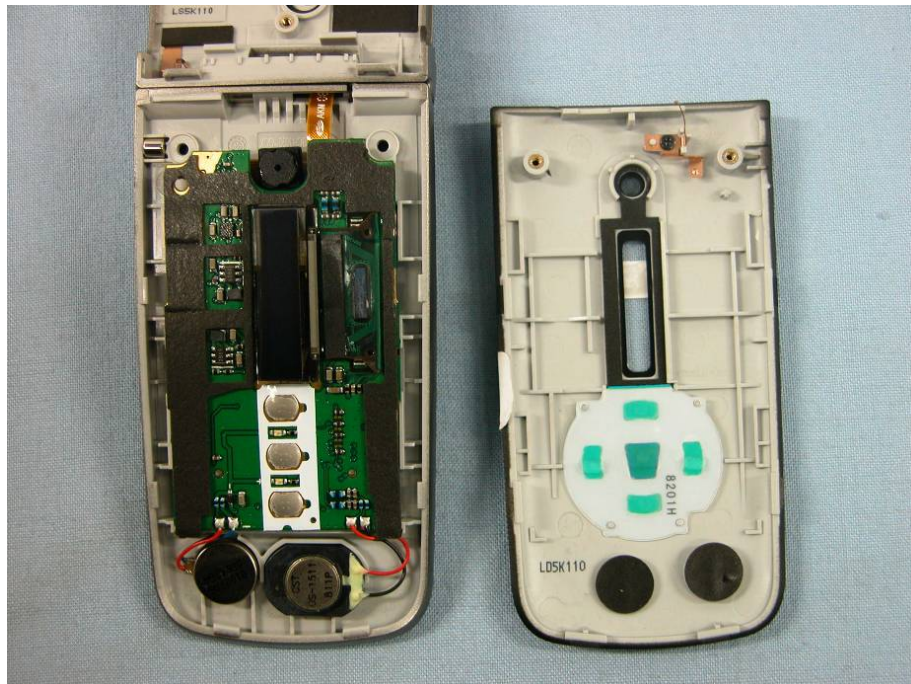
Mobile phone Disassembly



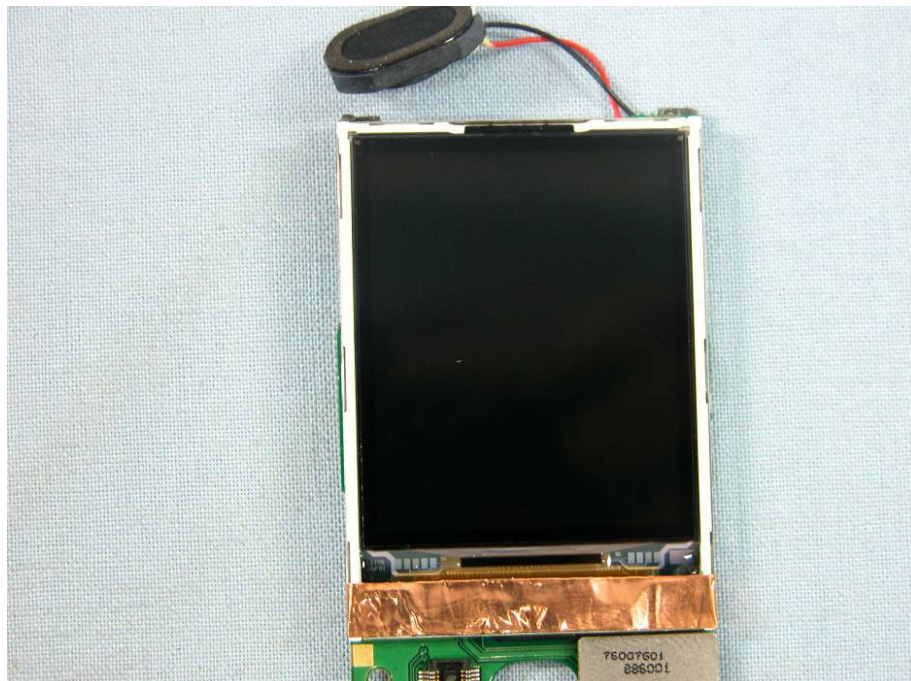
Mobile phone Disassembly



Mobile phone Disassembly



**Mobile phone Disassembly**



**Mobile phone Disassembly**



## **ANNEX B: MEASUREMENT RESULTS**

### **B.1 OUTPUT POWER** (§22.913(a)/§24.232(b))

#### **B.1.1 Summary**

During the process of testing, the EUT was controlled via Rhode & Schwarz Digital Radio Communication tester (CMU-200) to ensure max power transmission and proper modulation.

This result contains peak output power and EIRP measurements for the EUT.

In all cases, output power is within the specified limits.

#### **B.1.2 Conducted**

##### **B.1.2.1 Method of Measurements**

The EUT was set up for the max output power with pseudo random data modulation.

The power was measured with Rhode & Schwarz Spectrum Analyzer FSU (peak)

These measurements were done at 3 frequencies, 1850.2 MHz, 1880.0 MHz and 1909.8 MHz for PCS1900 band, 824.4MHz, 836.6MHz and 848.8MHz for GSM850 band (bottom, middle and top of operational frequency range).

#### **GSM850**

##### **Limit**

Power step	Nominal Peak output power (dBm)	Tolerance (dB)
5	33dBm(2W)*	± 2

\*GSM Specification – ETSI EN 300 910 V8.5.1 (2000-11) Section 4.1

#### **Measurement result**

##### **GSM**

Frequency(MHz)	Peak output power(dBm)
824.2	32.68
836.6	32.59
848.8	32.54

##### **GPRS**

Frequency(MHz)	Peak output power(dBm)
824.2	32.45
836.6	32.37
848.8	32.41

**PCS1900**

**Limit**

Power step	Nominal Peak output power (dBm)	Tolerance (dB)
0	30dBm(1W)*	± 2

\*GSM Specification – ETSI EN 300 910 V8.5.1 (2000-11) Section 4.1

**Measurement result**

**GSM**

Frequency(MHz)	Conducted Output Power(dBm)
1850.2	29.54
1880.0	29.29
1909.8	29.20

**GPRS**

Frequency(MHz)	Conducted Output Power(dBm)
1850.2	29.45
1880.0	29.24
1909.8	29.03

**B.1.3 Radiated**

**B.1.3.1 Description**

This is the test for the maximum radiated power from the EUT.

Rule Part 24.232(b) specifies, "Mobile/portable stations are limited to 2 watts e.i.r.p. Peak power" and 24.232(c) specifies that "Peak transmit power must be measured over any interval of continuous transmission using instrumentation calibrated in terms of an rms-equivalent voltage."

Rule Part 22.913(a) specifies "Maximum ERP. The effective radiated power (ERP) of base transmitters and cellular repeaters must not exceed 500 Watts. The ERP of mobile transmitters and auxiliary test transmitters must not exceed 7 Watts."

**B.1.3.2 Method of Measurement**

1. In an anechoic antenna test chamber, a half-wave dipole antenna for the frequency band of interest is placed at the reference centre of the chamber. An RF Signal source for the frequency band of interest is connected to the dipole with a cable that has been constructed to not interfere with the radiation pattern of the antenna. A known (measured) power (Pin) is applied to the input of the dipole, and the power received (Pr) at the chamber's probe antenna is recorded.
2. A "reference path loss" is established as  $Pin + 2.15 - Pr$ .
3. The EUT is substituted for the dipole at the reference centre of the chamber and a scan is performed to obtain the radiation pattern.
4. From the radiation pattern, the co-ordinates where the maximum antenna gain occurs are identified.
5. The EUT is then put into pulse mode at its maximum power level (Power Step 0 for PCS1900, 5 for GSM 850).
6. "Gated mode" power measurements are performed with the receiving antenna placed at the

coordinates determined in Step 3 to determine the output power as defined in Rule 24.232 (b) and (c). The "reference path loss" from Step1 is added to this result.

7. This value is EIRP since the measurement is calibrated using a half-wave dipole antenna of known gain (2.15 dBi) and known input power (Pin).
8. ERP can be calculated from EIRP by subtracting the gain of the dipole,  $ERP = EIRP - 2.15dBi$ .

**GSM 850-ERP 22.913(a)**

**Limits**

Power Step	Burst Peak ERP (dBm)
5	≤38.45dBm (7W)

**Measurement result**

**GSM**

Frequency(MHz)	Peak ERP(dBm)
824.2	27.19
836.6	28.78
848.8	29.33

**GPRS**

Frequency(MHz)	Peak ERP(dBm)
824.2	28.9174
836.6	30.5217
848.8	31.148

**ANALYZER SETTINGS: RBW = VBW = 3MHz**

**PCS1900-EIRP 24.232(b)**

**Limits**

Power Step	Burst Peak EIRP (dBm)
0	≤33dBm (2W)

**Measurement result**

**GSM**

Frequency(MHz)	Peak EIRP(dBm)
1850.2	30.76
1880.0	31.33
1909.8	30.97

**GPRS**

Frequency(MHz)	Peak EIRP(dBm)
1850.2	31.0743
1880.0	31.5319
1909.8	30.9213

**ANALYZER SETTINGS: RBW = VBW = 3MHz**

## **B.2 EMISSION LIMIT (§2.1051/§24.238)**

### **B.2.1 Measurement Method**

The measurements procedures in TIA-603C-2004 are used.

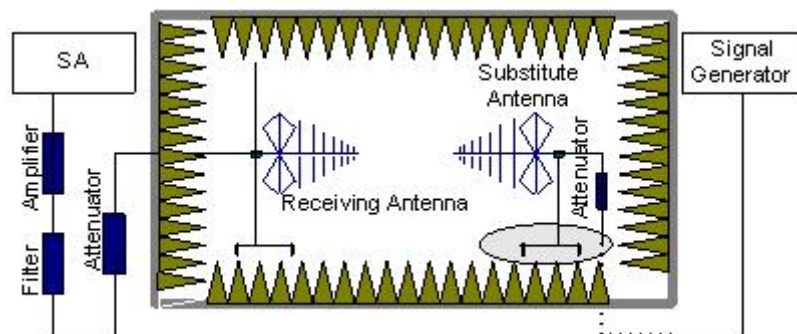
The spectrum was scanned from 30 MHz to the 10th harmonic of the highest frequency generated within the equipment, which is the transmitted carrier that can be as high as 1910 MHz. The resolution bandwidth is set 1MHz as outlined in Part 24.238. The spectrum was scanned with the mobile station transmitting at carrier frequencies that pertain to low, mid and high channels of the PCS1900 and GSM850 band.

#### **The procedure of radiated spurious emissions is as follows:**

##### **a) Pre-calibration**

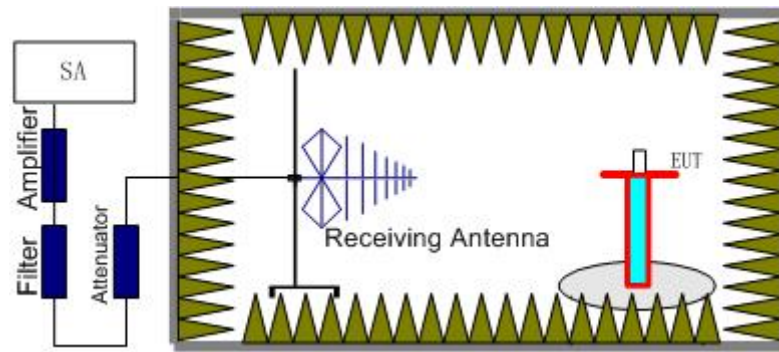
With pre-calibration method, the Radiated Spurious Emissions(RSE) is calculated as,  
 $RSE = R_x \text{ (dBuV)} + CL \text{ (dB)} + SA \text{ (dB)} + Gain \text{ (dBi)} - 107 \text{ (dBuV to dBm)}$

The SA is calibrated using following setup.



##### **b) EUT test**

EUT was placed on a 1.5 meter high non-conductive stand at a 3 meter test distance from the receive antenna. A receiving antenna was placed on the antenna mast 3 meters from the test item for emission measurements. The height of receiving antenna is 1.5m. The test setup refers to figure below. Detected emissions were maximized at each frequency by rotating the test item and adjusting the receiving antenna polarization. The radiated emission measurements of all non-harmonic and harmonics of the transmit frequency through the 10th harmonic were measured with peak detector and 1MHz bandwidth.



### B.2.2 Measurement Limit

Sec. 24.238 Emission Limits.

(a) On any frequency outside a licensee's frequency block (e.g. A, D, B, etc.) within the USPCS spectrum, the power of any emission shall be attenuated below the transmitter power ( $P$ , in Watts) by at least  $43+10\log(P)$  dB. The specification that emissions shall be attenuated below the transmitter power ( $P$ ) by at least  $43 + 10 \log (P)$  dB, translates in the relevant power range (1 to 0.001 W) to -13 dBm. At 1 W the specified minimum attenuation becomes 43 dB and relative to a 30 dBm (1 W) carrier becomes a limit of -13 dBm. At 0.001 W (0 dBm) the minimum attenuation is 13 dB, which again yields a limit of -13 dBm. In this way a translation of the specification from relative to absolute terms is carried out.

### B.2.3 Measurement Results

Radiated emissions measurements were made only at the upper, middle, and lower carrier frequencies of the PCS band (1850.2 MHz, 1880 MHz and 1909.8 MHz) and GSM850 band (824.2MHz, 836.6MHz, 848.8MHz). It was decided that measurements at these three carrier frequencies would be sufficient to demonstrate compliance with emissions limits because it was seen that all the significant spurs occur well outside the band and no radiation was seen from a carrier in one block of the PCS1900 and GSM850 into any of the other blocks. The equipment must still, however, meet emissions requirements with the carrier at all frequencies over which it is capable of operating and it is the manufacturer's responsibility to verify this.

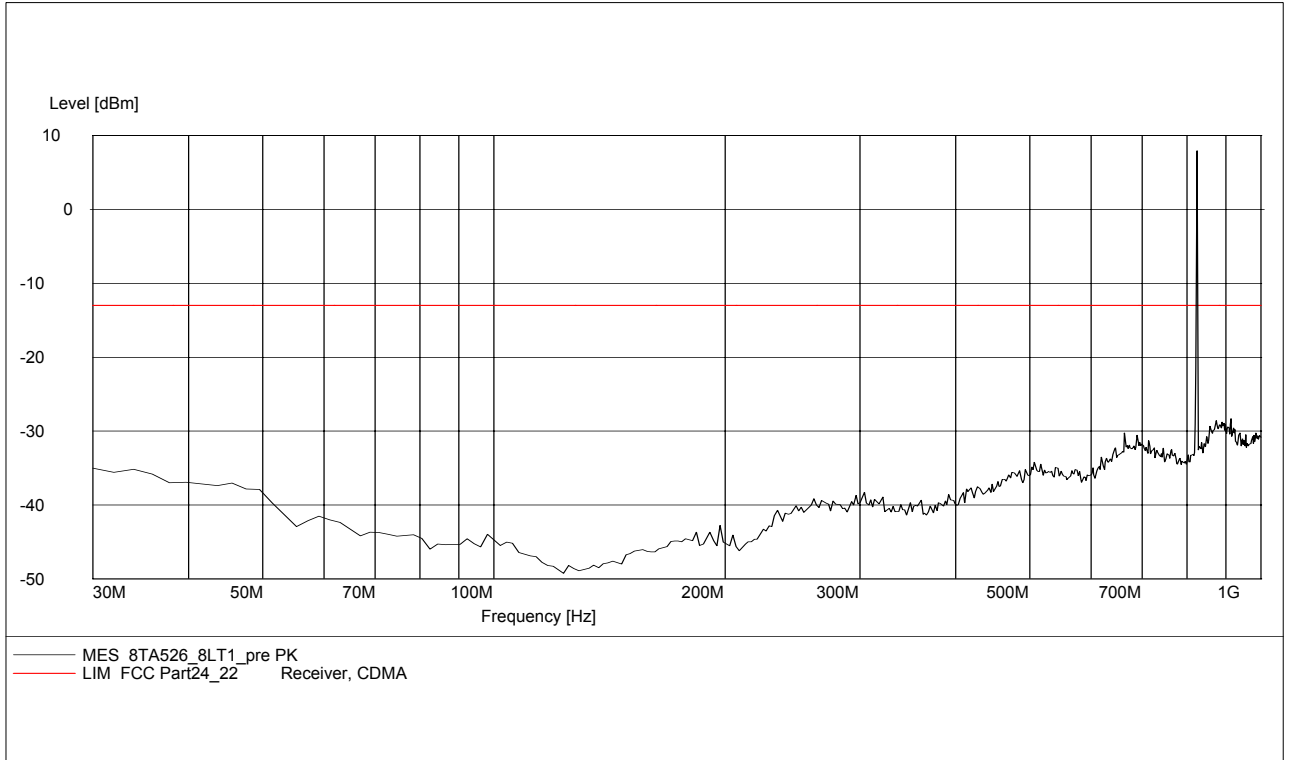
**NOTE: The spurious emissions were done with different settings, using the relevant pre-amplifiers for the relevant frequency ranges. This is the reason that the graphs show different noise levels.**

**GSM 850**

**B.2.3.1 RADIATED SPURIOUS EMISSIONS-Channel 128: 30MHz –1GHz**

Radiated spurious emission limit :-13dBm.

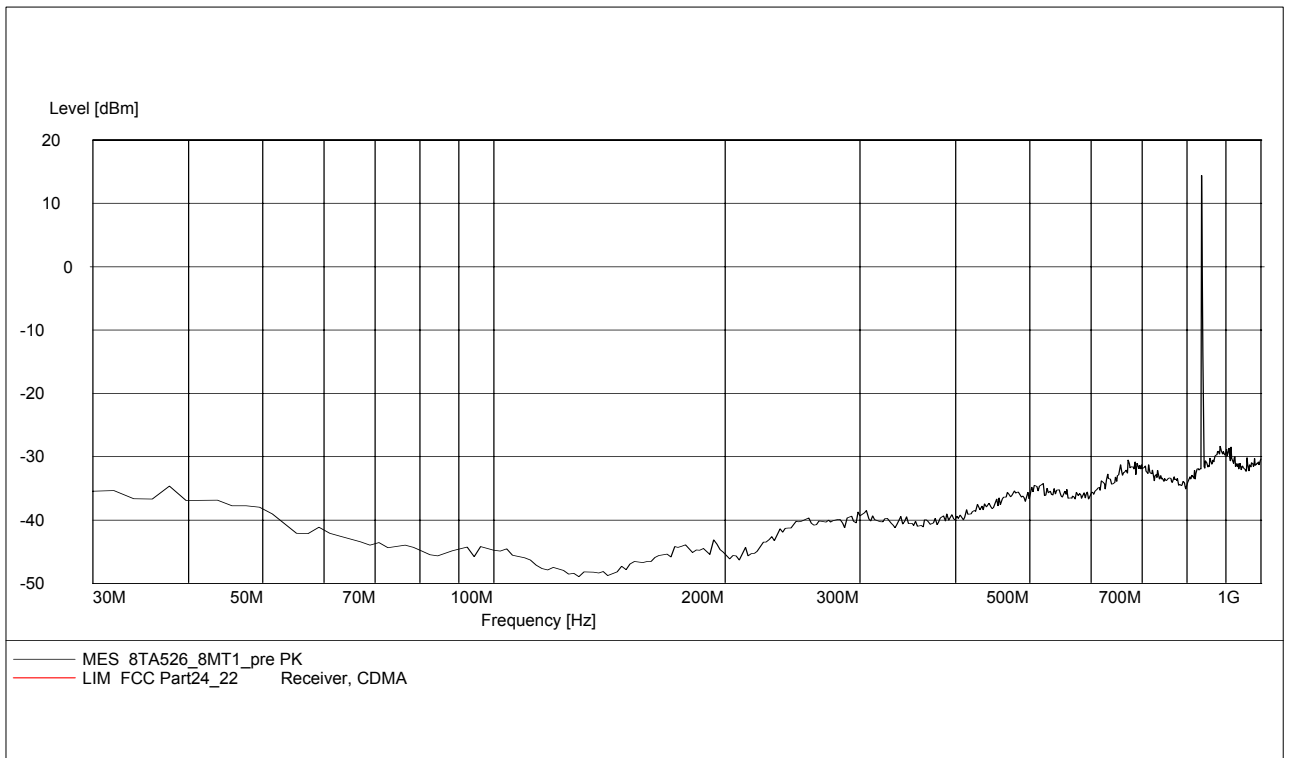
**NOTE: peak above the limit line is the Carrier frequency @ ch-128**



**B.2.3.2 RADIATED SPURIOUS EMISSIONS-Channel 190: 30MHz – 1GHz**

Radiated spurious emission limit :-13dBm.

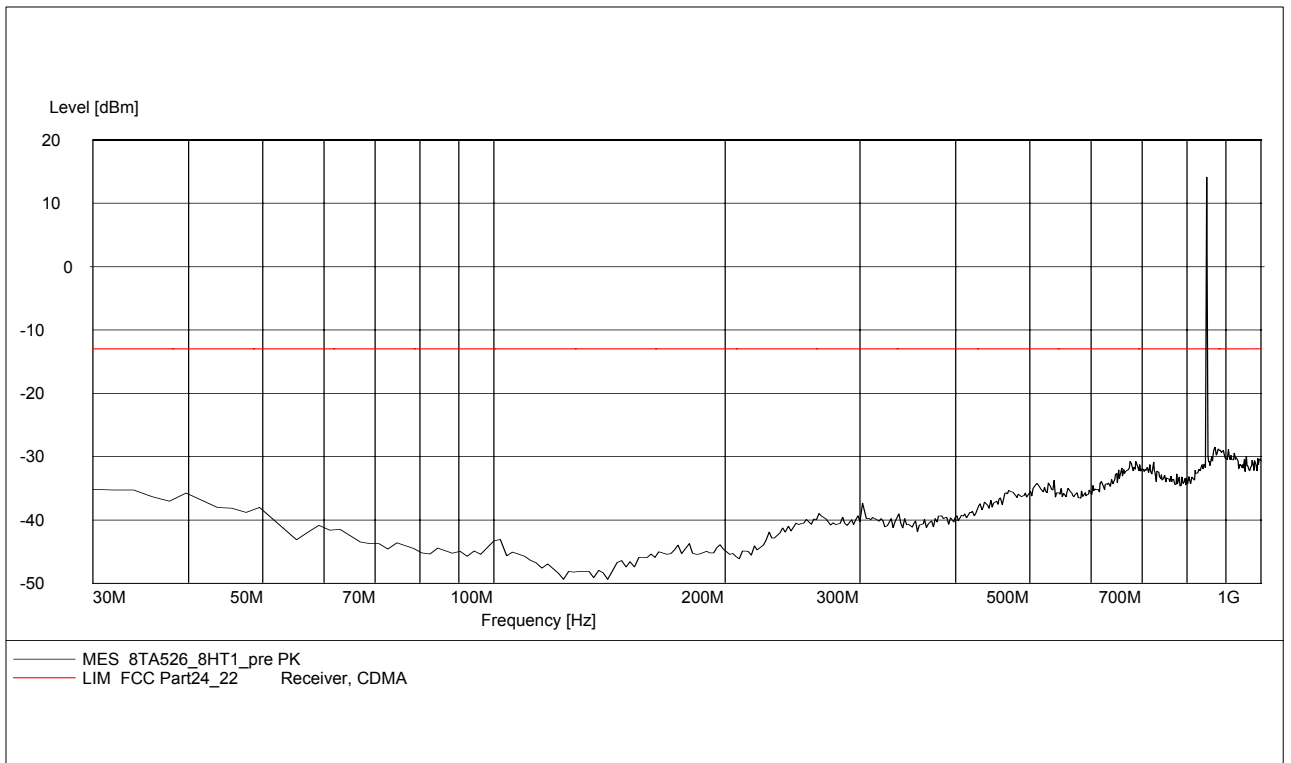
**NOTE: peak above the limit line is the Carrier frequency @ ch-190**



### B.2.3.3 RADIATED SPURIOUS EMISSIONS-Channel 251: 30MHz – 1GHz

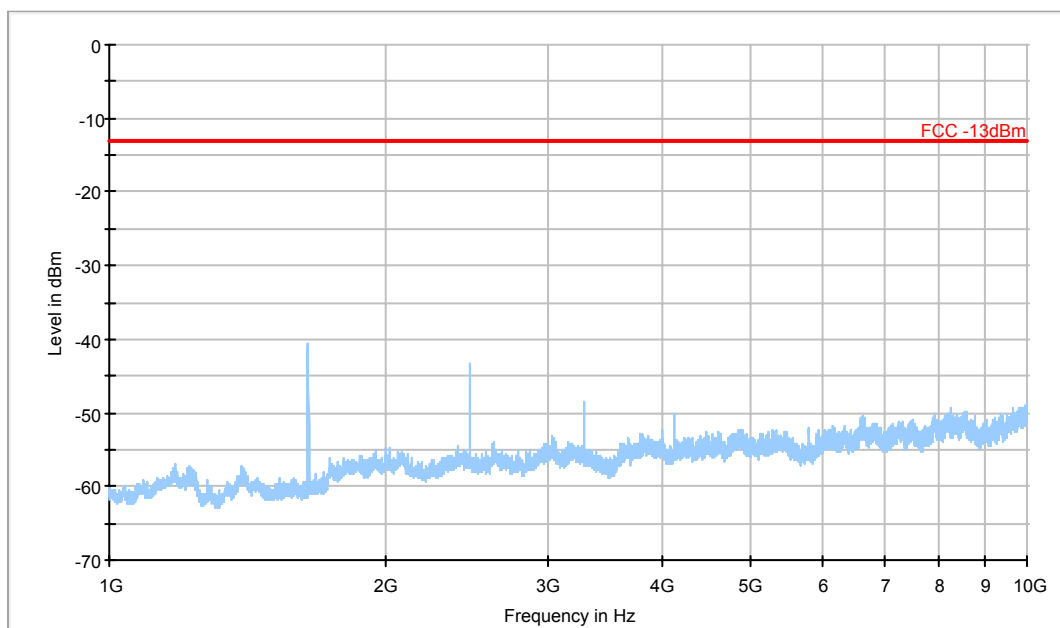
Radiated spurious emission limit :-13dBm.

NOTE: peak above the limit line is the Carrier frequency @ ch-251



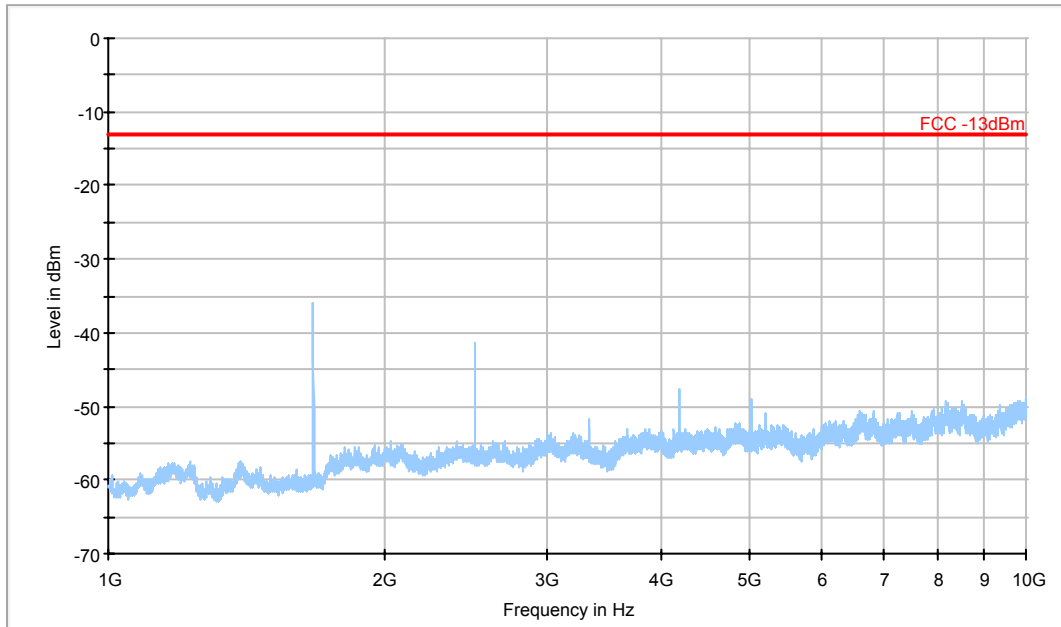
### B.2.3.4 RADIATED SPURIOUS EMISSIONS-Channel 128: 1GHz – 10GHz

Radiated spurious emission limit :-13dBm.



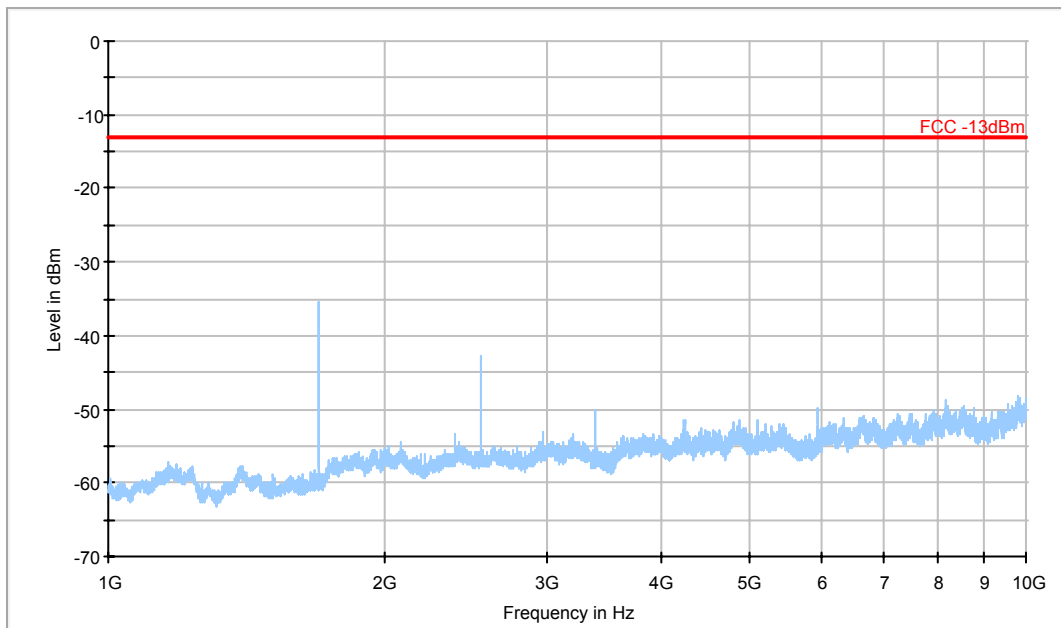
— FCC -13dBm    — Preview Measurement Detector 1

**B.2.3.5 RADIATED SPURIOUS EMISSIONS-Channel 190: 1GHz – 10GHz**  
Radiated spurious emission limit :-13dBm.



— FCC -13dBm      — Preview Measurement Detector 1

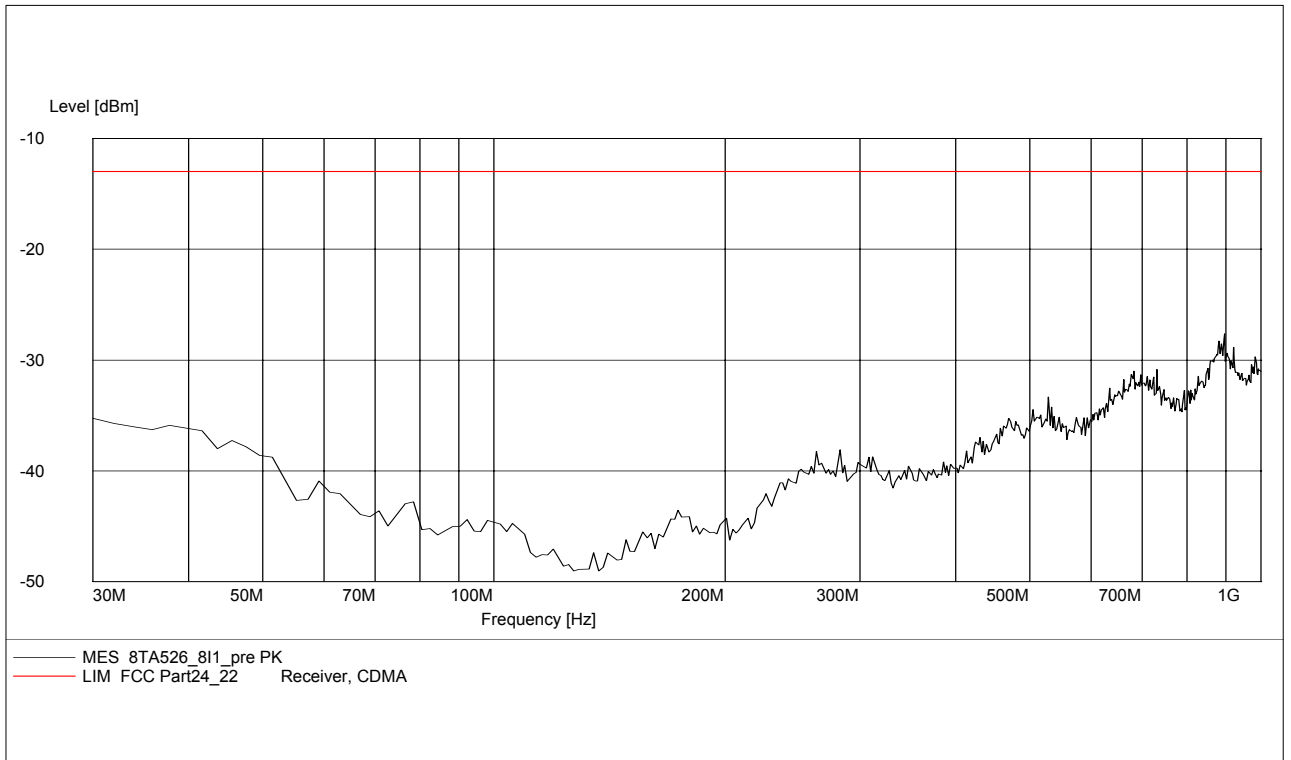
**B.2.3.6 RADIATED SPURIOUS EMISSIONS-Channel 251: 1GHz – 10GHz**  
Radiated spurious emission limit :-13dBm.



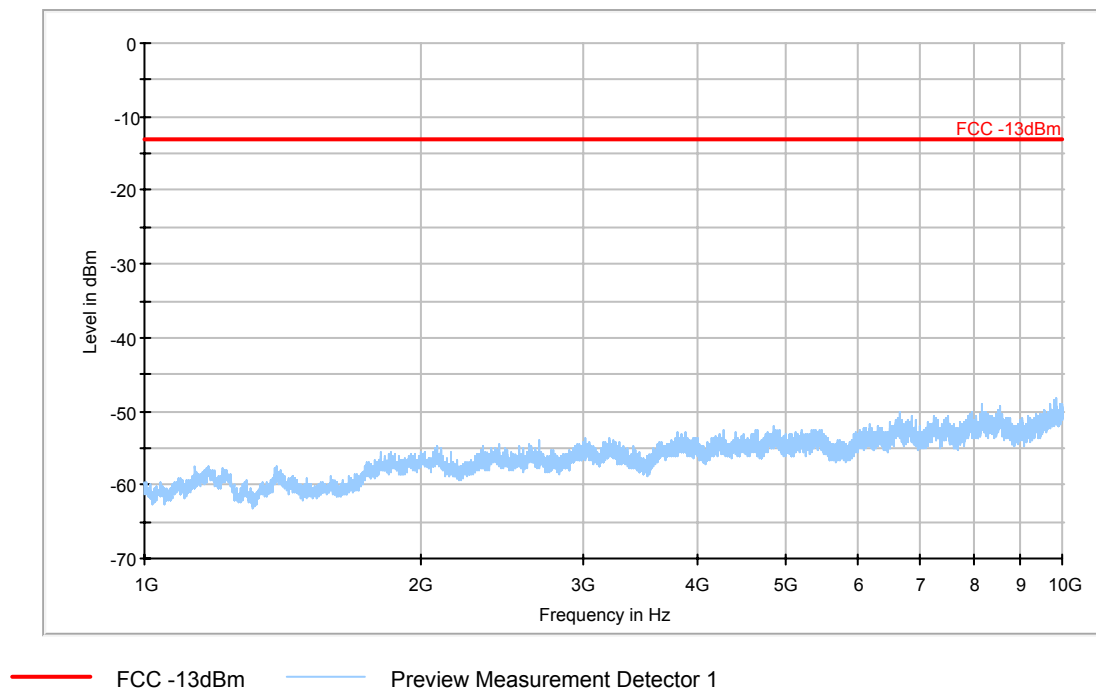
— FCC -13dBm      — Preview Measurement Detector 1



**B.2.3.7 RADIATED SPURIOUS EMISSIONS-EUT in Idle Mode: 30MHz – 1GHz**  
Radiated spurious emission limit :-13dBm.



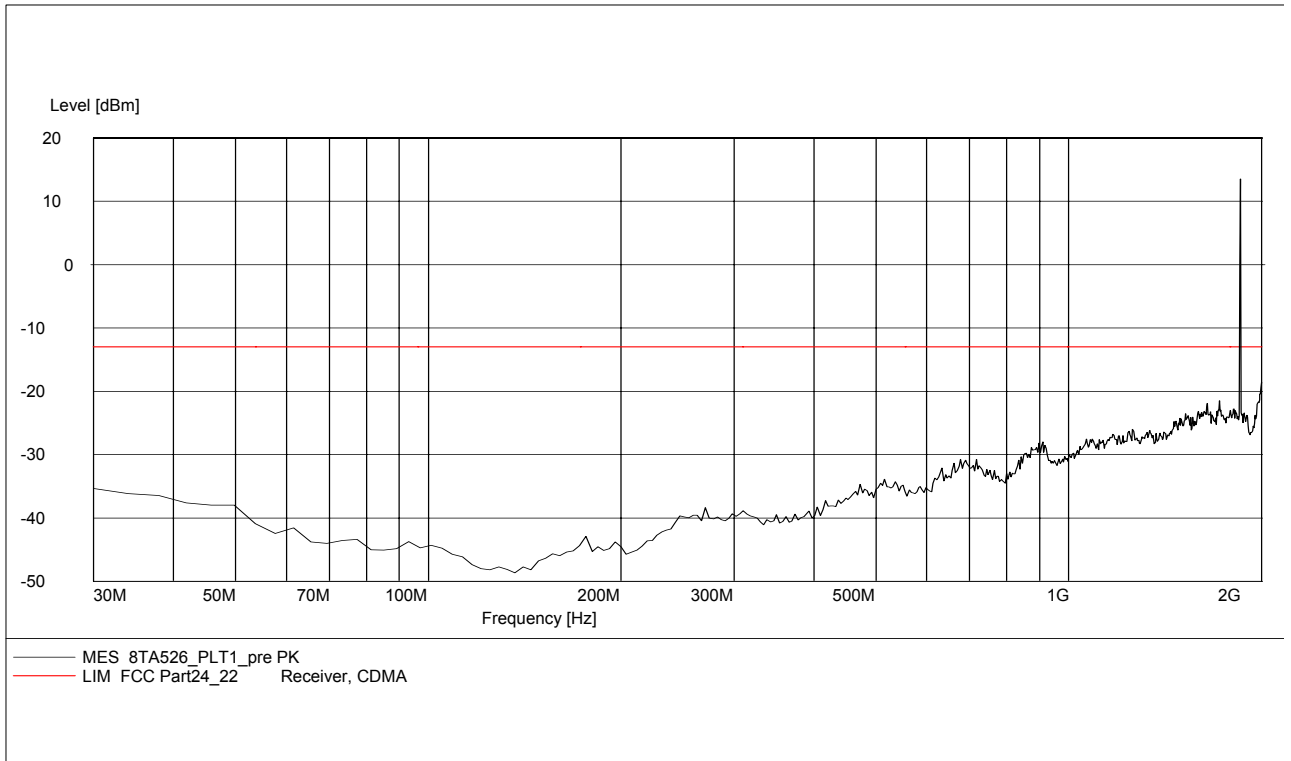
**B.2.3.8 RADIATED SPURIOUS EMISSIONS-EUT in Idle Mode: 1GHz – 10GHz**  
Radiated spurious emission limit :-13dBm.



**PCS 1900**

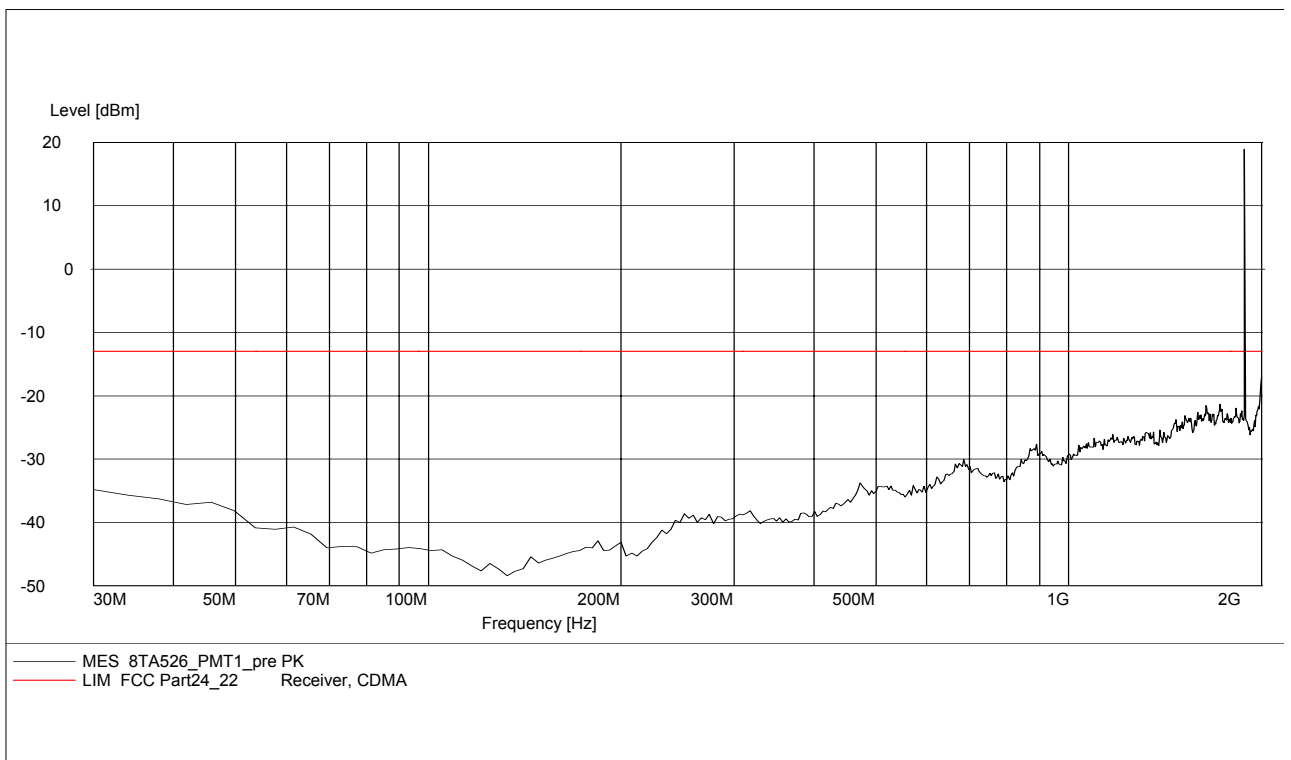
**B.2.3.9 RADIATED SPURIOUS EMISSIONS-Channel 512: 30MHz – 2GHz**

**NOTE: peak above the limit line is the Carrier frequency @ ch-512**



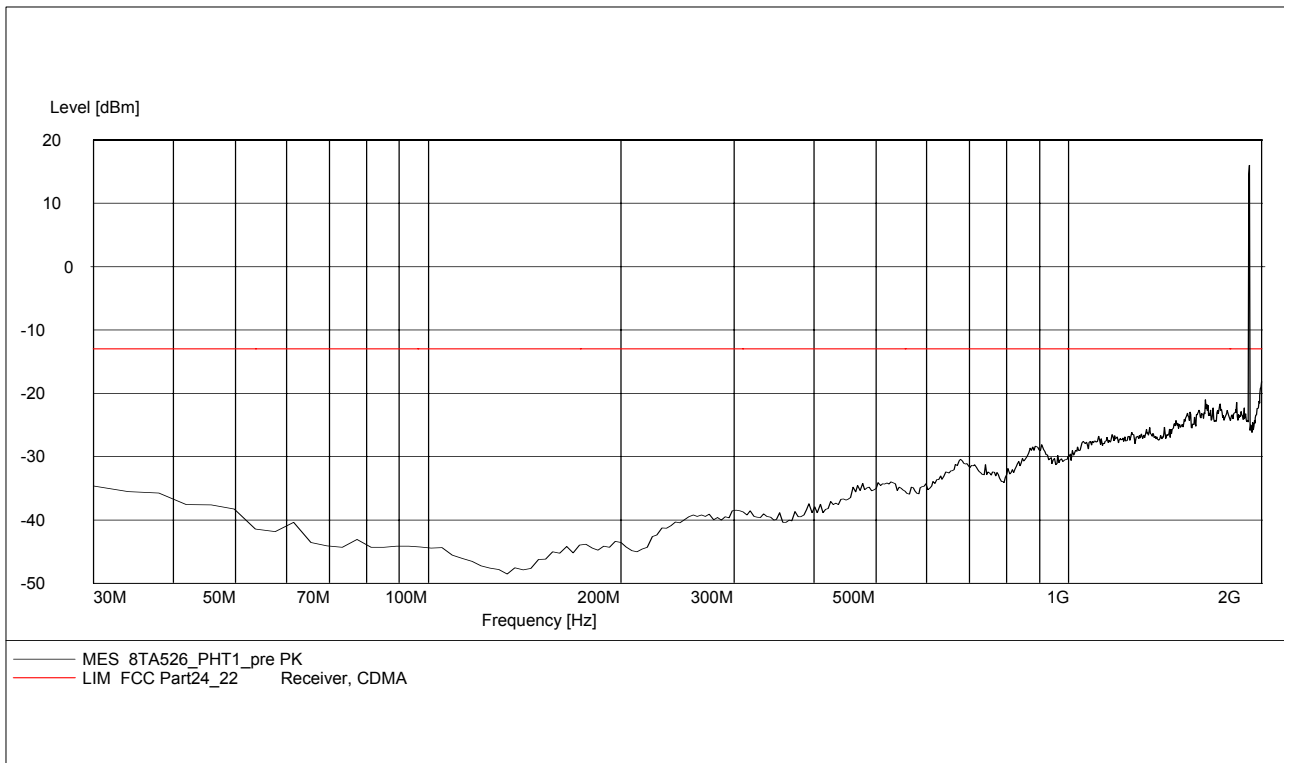
**B.2.3.10 RADIATED SPURIOUS EMISSIONS-Channel 661: 30MHz – 2GHz**

**NOTE: peak above the limit line is the Carrier frequency @ ch-661**

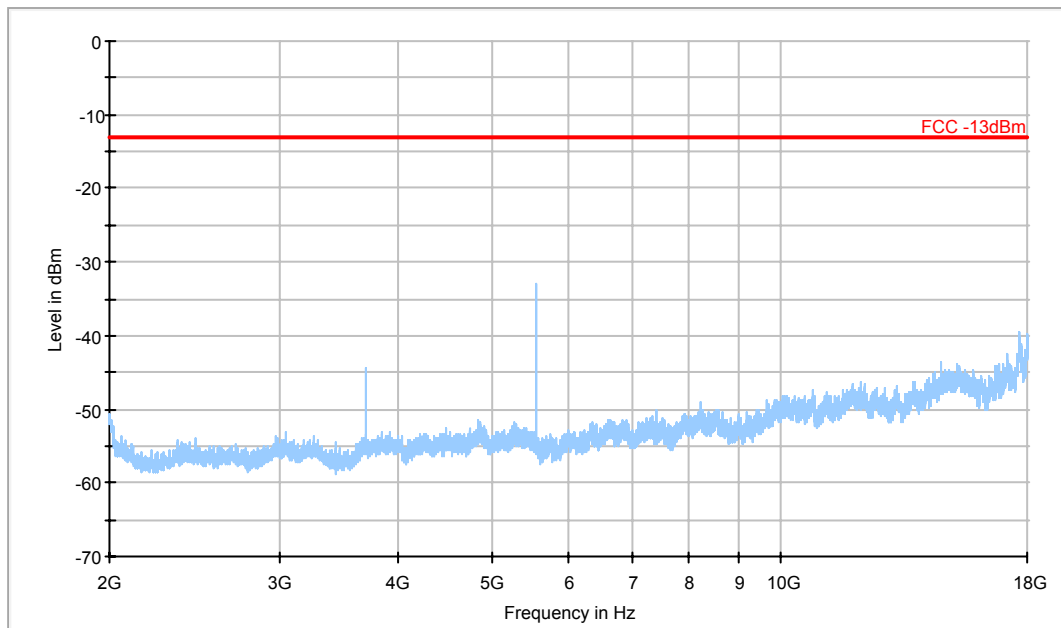


**B.2.3.11 RADIATED SPURIOUS EMISSIONS-Channel 810: 30MHz – 2GHz**

**NOTE: peak above the limit line is the Carrier frequency @ ch-810**

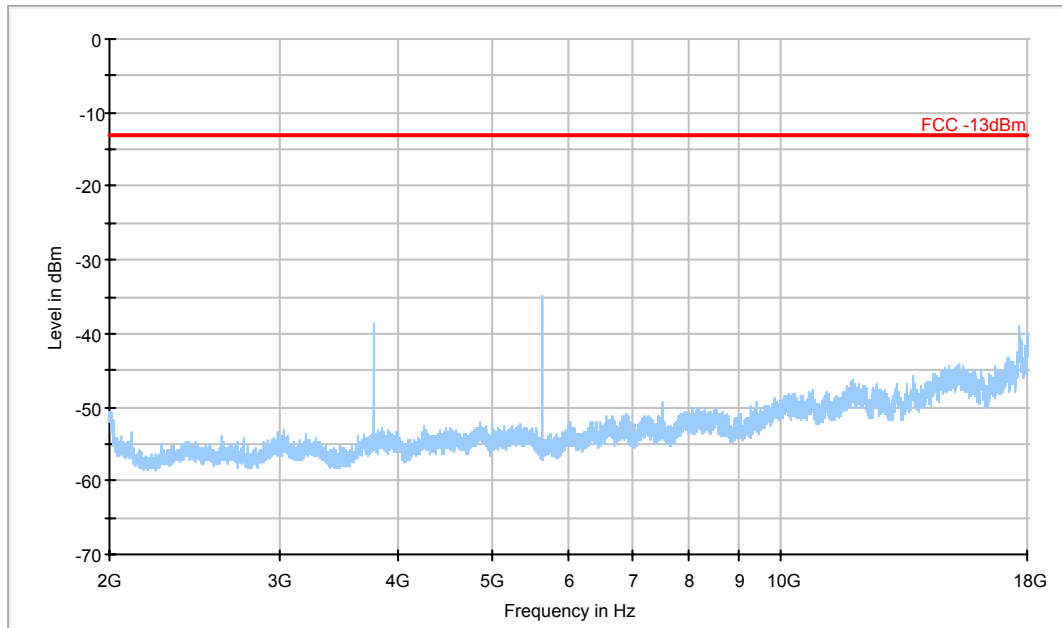


**B.2.3.12 RADIATED SPURIOUS EMISSIONS-Channel 512: 2GHz – 18GHz**



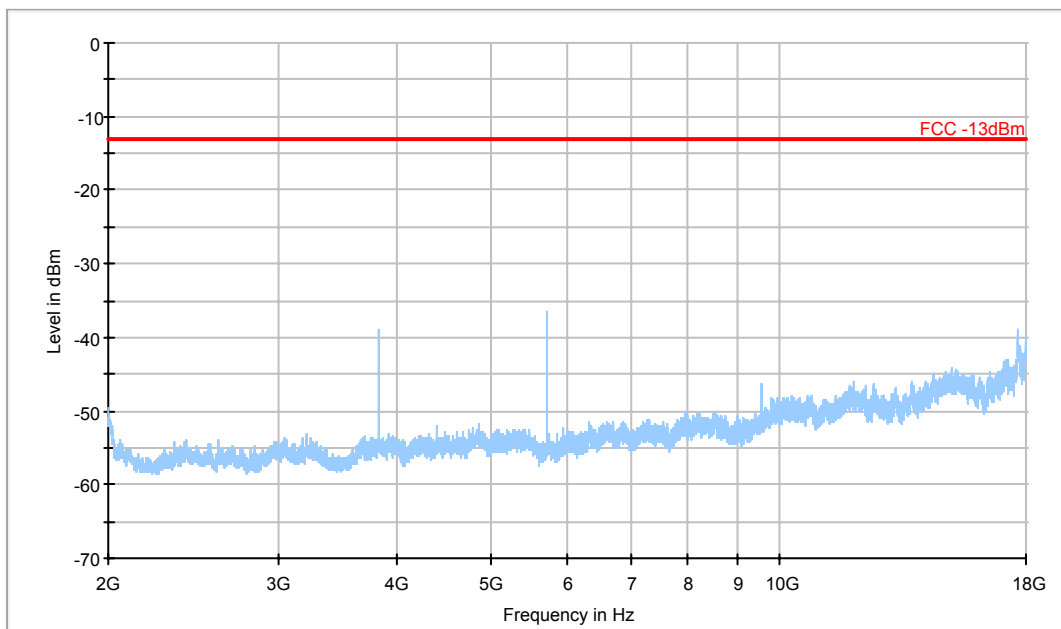
— FCC -13dBm    — Preview Measurement Detector 1

**B.2.3.13 RADIATED SPURIOUS EMISSIONS-Channel 661: 2GHz – 18GHz**



— FCC -13dBm      — Preview Measurement Detector 1

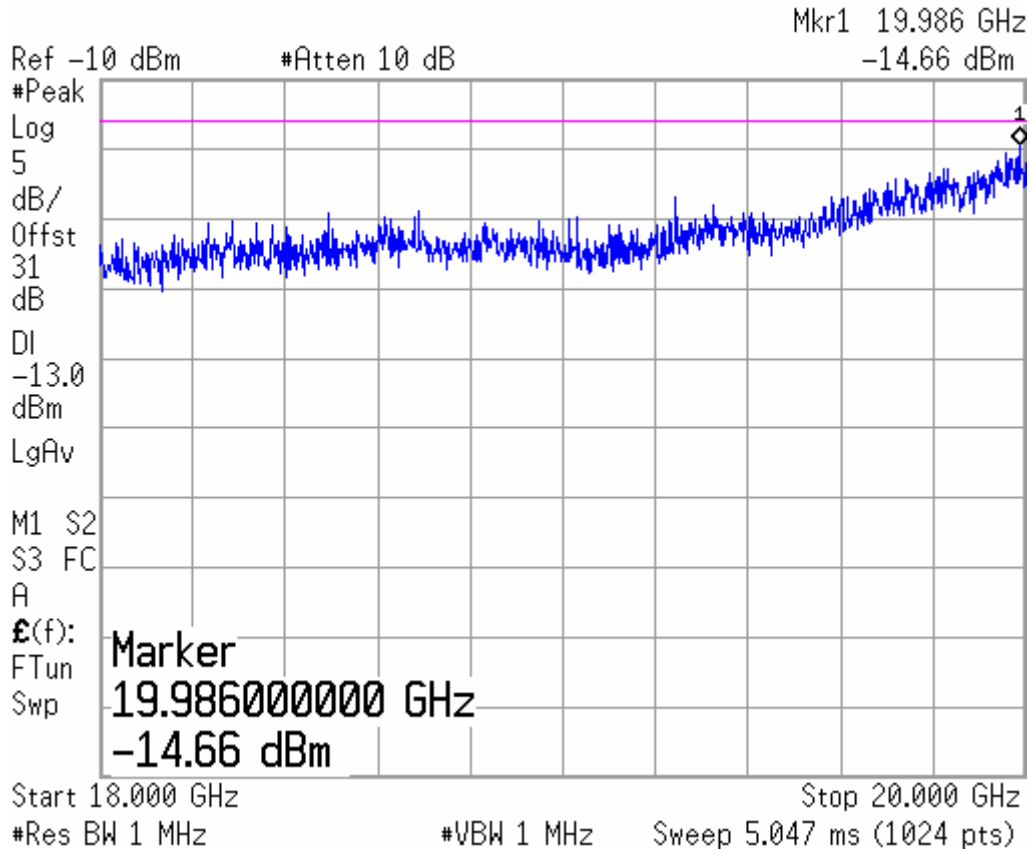
**B.2.3.14 RADIATED SPURIOUS EMISSIONS-Channel 810: 2GHz – 18GHz**



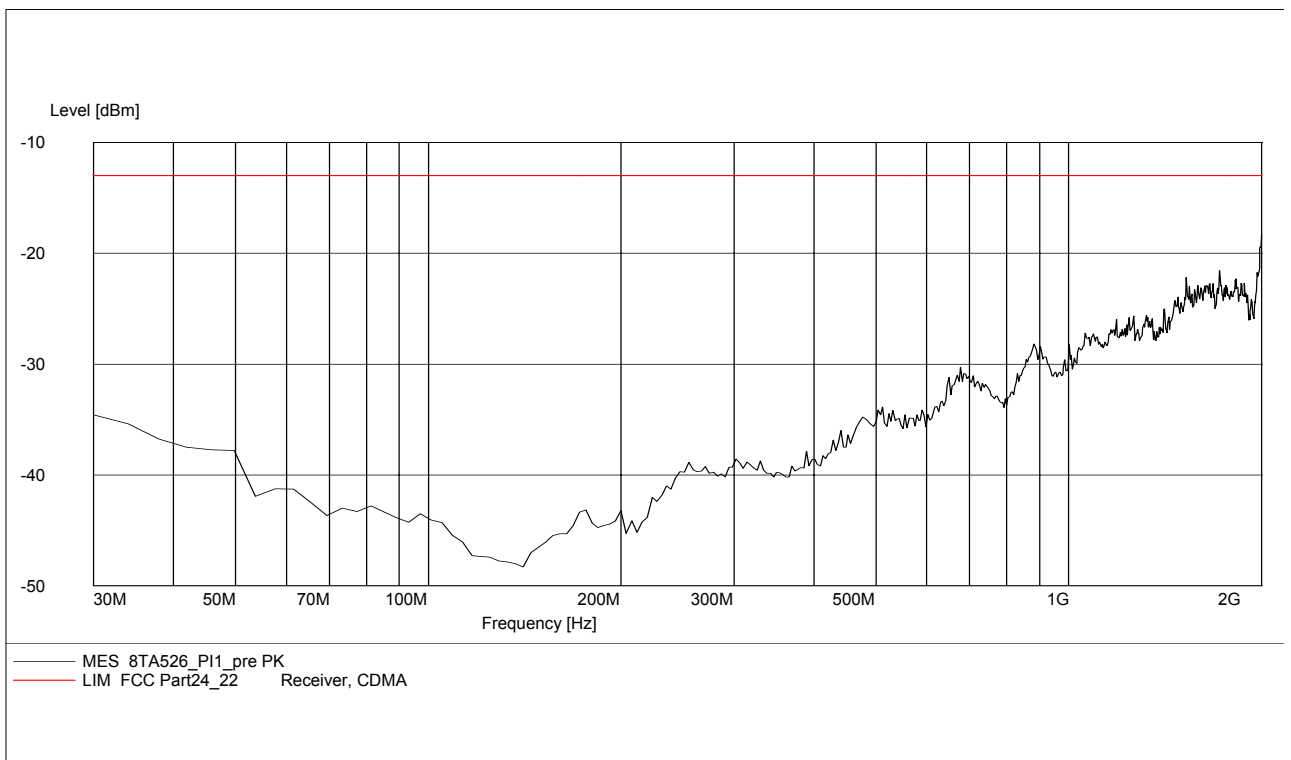
— FCC -13dBm      — Preview Measurement Detector 1

**B.2.3.15 Radiated spurious emission (18GHz-20GHz)**

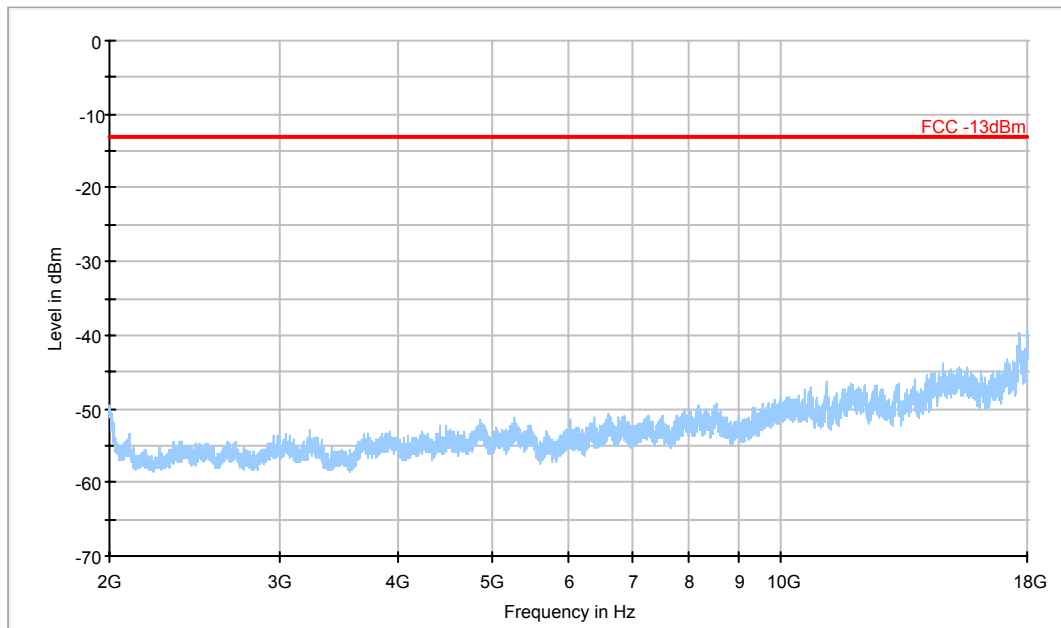
**Note: This plot is valid for low, mid & high channels. It is same as the floor noise.**



**B.2.3.16 RADIATED SPURIOUS EMISSIONS-EUT in Idle Mode: 30MHz – 2GHz**



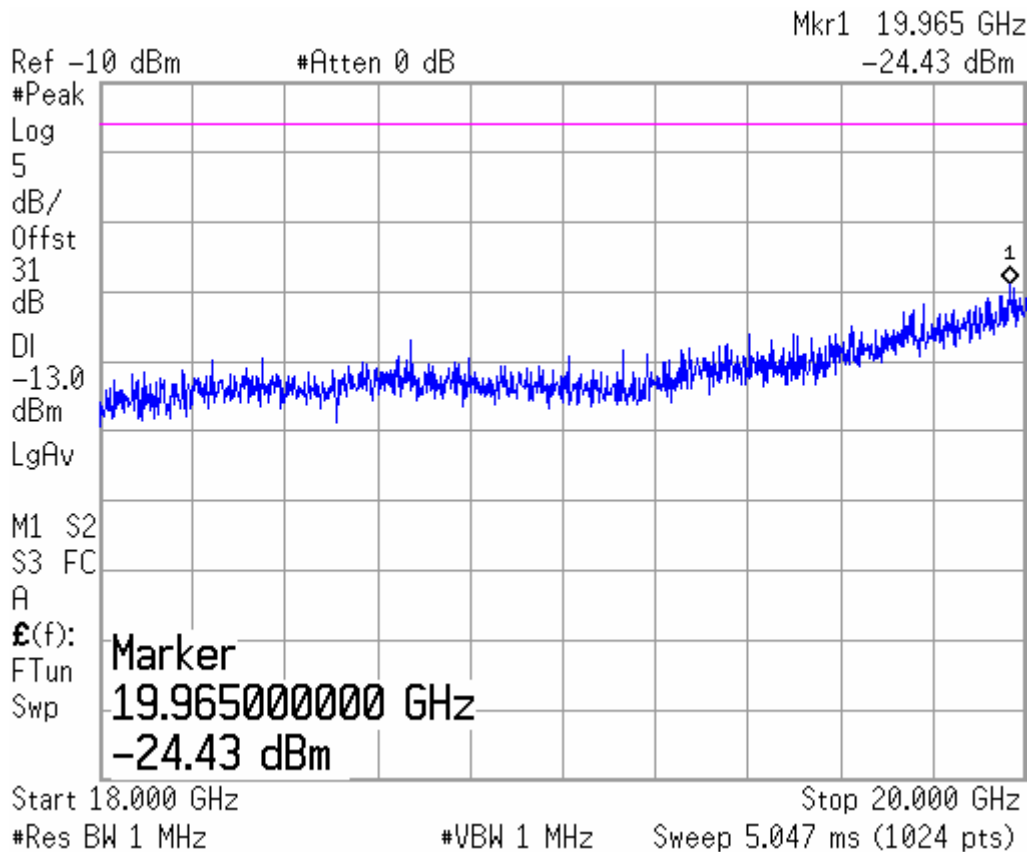
**B.2.3.17 RADIATED SPURIOUS EMISSIONS-EUT in Idle Mode: 2GHz – 18GHz**



— FCC -13dBm    — Preview Measurement Detector 1

**B.2.3.18 RADIATED SPURIOUS EMISSIONS-EUT in Idle Mode: 18GHz – 20GHz**

**Note: It is same as the floor noise.**



### **B.3 CONDUCTED EMISSION** (§15.107§15.207)

The measurement procedure in ANSI C63.4-1003 is used. Conducted Emission is measured with travel charger.

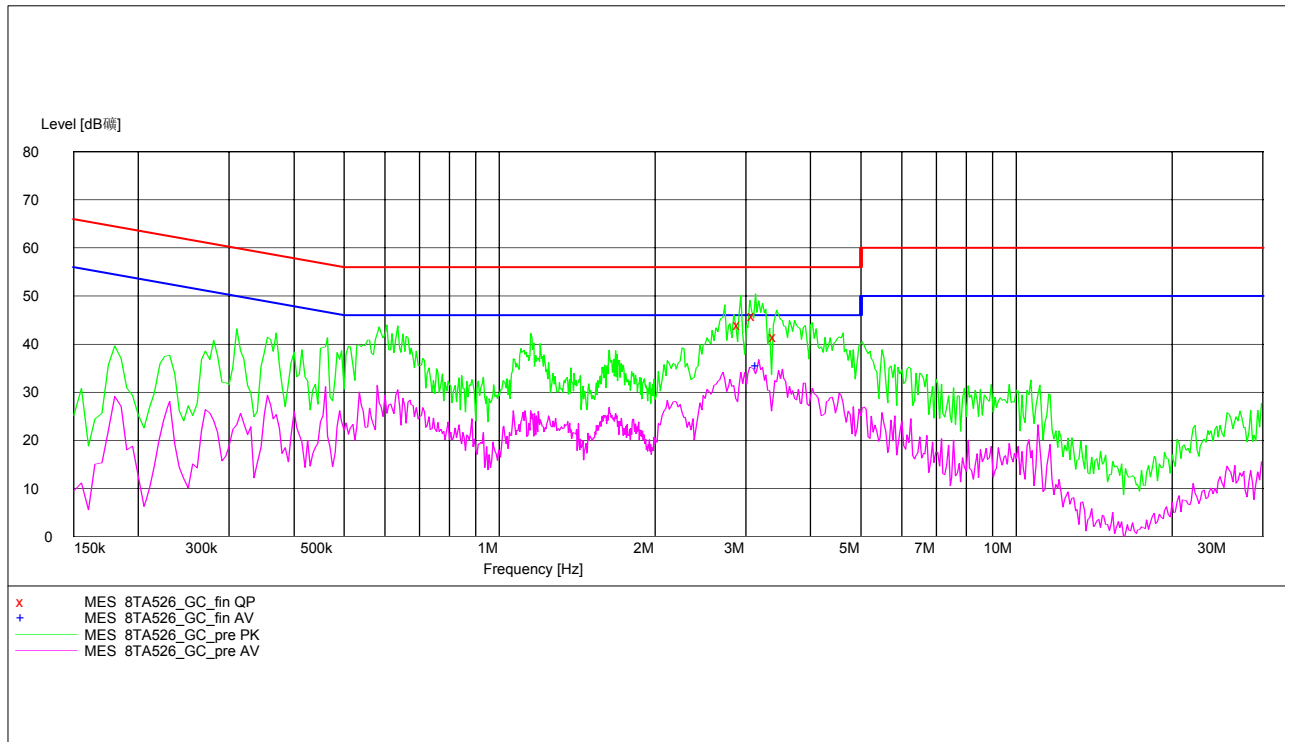
#### **B.3.1 Limit**

Frequency of Emission (MHz)	Conducted Limit (dBµV)	
	Quasi -Peak	Average
0.15 – 0.5	66 to 56*	56 to 46*
0.5 – 5	56	46
5 – 30	60	50

\* Decreases with logarithm of the frequency

#### **B.3.2 Measurement result**

##### **GSM850MHz**



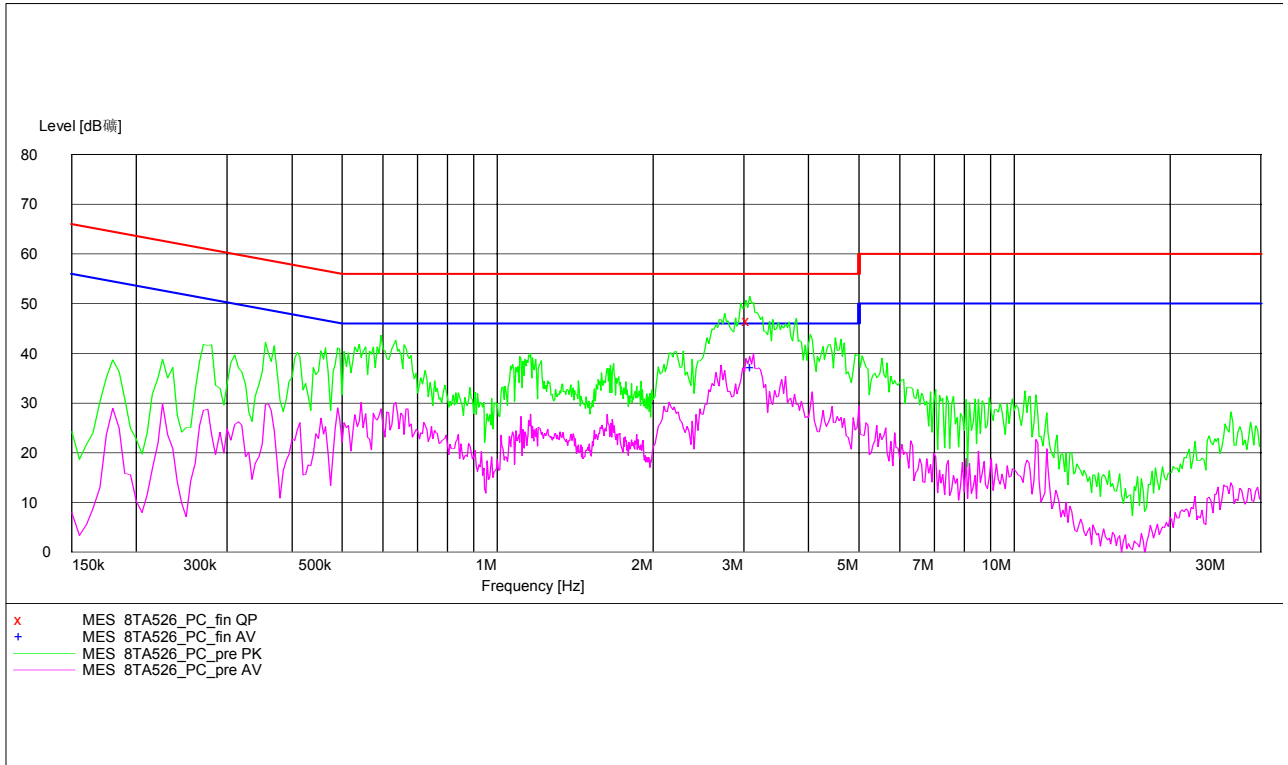
#### **MEASUREMENT RESULT: "8TA526\_GC\_fin QP"**

Frequency MHz	Level dBµV	Transd dB	Limit dBµV	Margin dB	Line	PE
2.931808	43.90	10.1	56	12.1	L1	GND
3.124783	45.80	10.1	56	10.2	L1	GND
3.438319	41.60	10.1	56	14.4	L1	FLO

#### **MEASUREMENT RESULT: "8TA526\_GC\_fin AV"**

Frequency MHz	Level dBµV	Transd dB	Limit dBµV	Margin dB	Line	PE
3.174979	35.40	10.1	46	10.6	L1	FLO

PCS 1900MHz



MEASUREMENT RESULT: "8TA526\_PC\_fin QP"

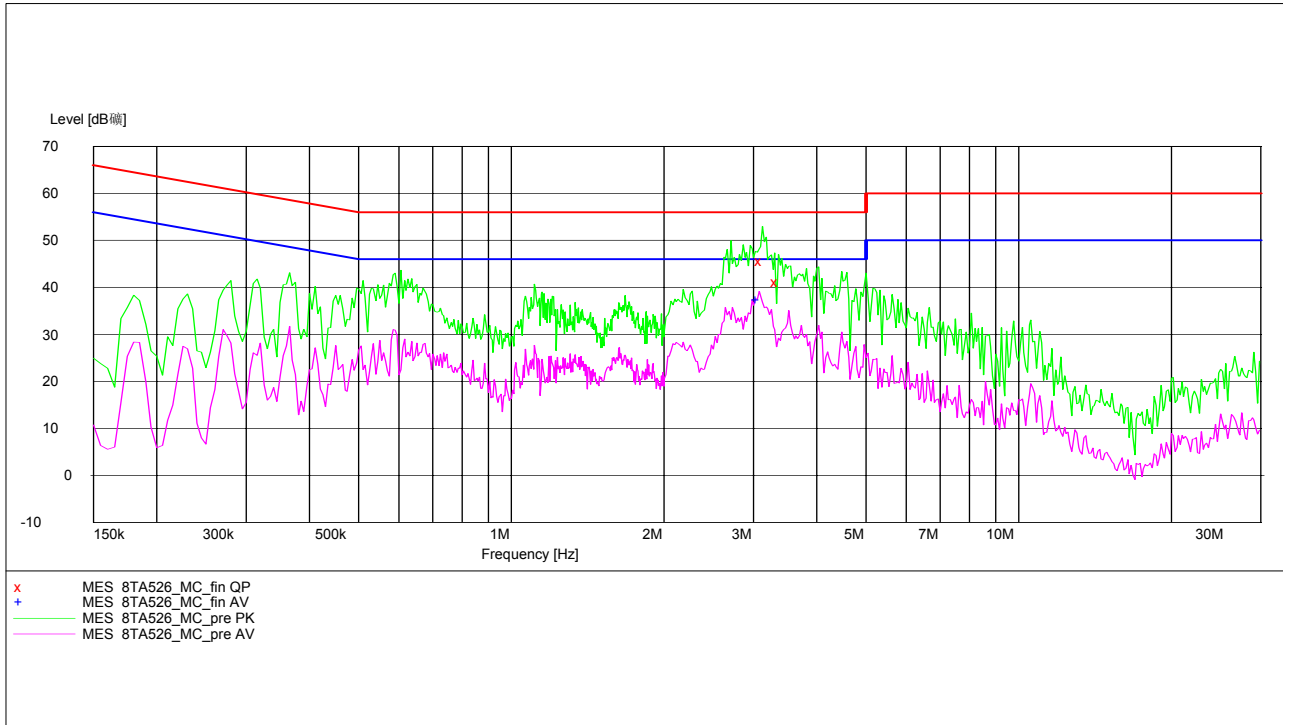
Frequency MHz	Level dBμV	Transd dB	Limit dBμV	Margin dB	Line	PE
3.075380	46.50	10.1	56	9.5	L1	GND

MEASUREMENT RESULT: "8TA526\_PC\_fin AV"

Frequency MHz	Level dBμV	Transd dB	Limit dBμV	Margin dB	Line	PE
3.124783	37.10	10.1	46	8.9	L1	GND



MP3



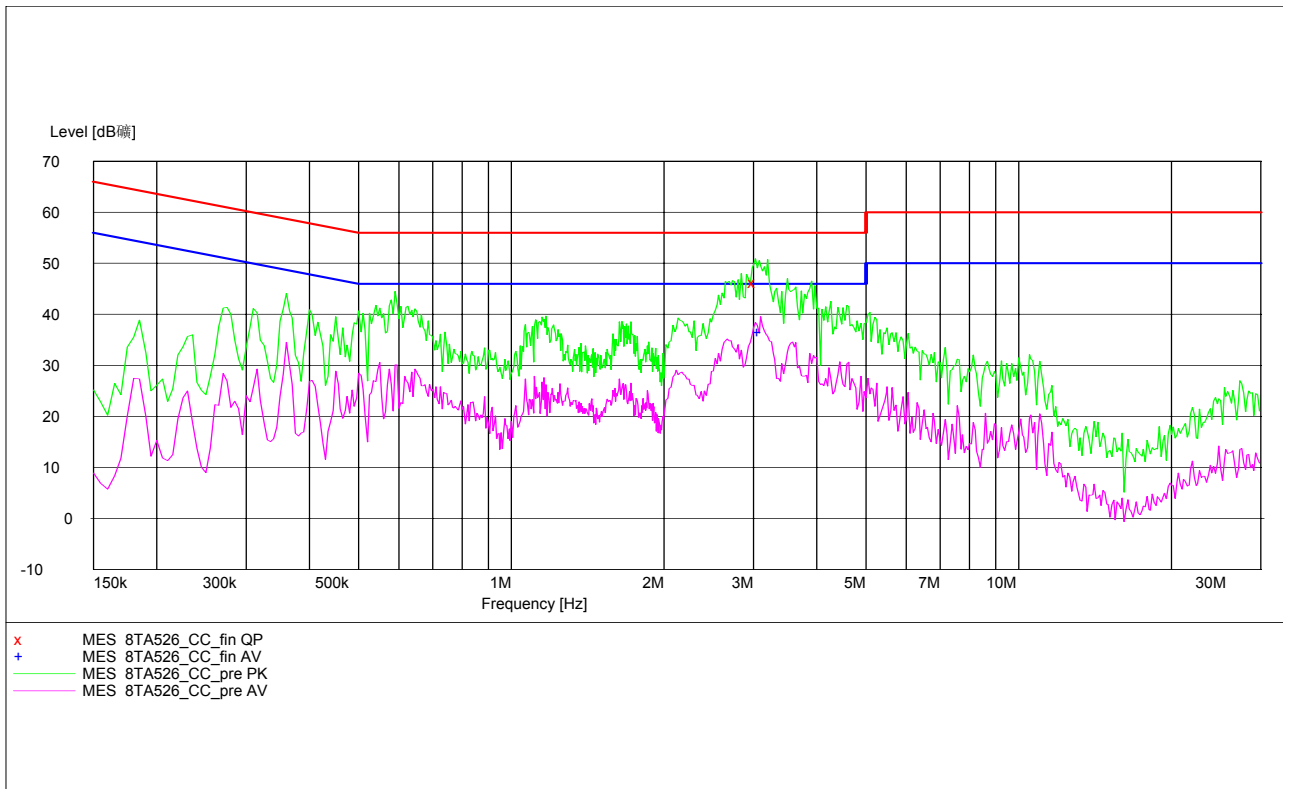
MEASUREMENT RESULT: "8TA526\_MC\_fin QP"

Frequency MHz	Level dB $\mu$ V	Transd dB	Limit dB $\mu$ V	Margin dB	Line	PE
3.124783	45.60	10.1	56	10.4	L1	GND
3.357102	41.20	10.1	56	14.8	L1	FLO

MEASUREMENT RESULT: "8TA526\_MC\_fin AV"

Frequency MHz	Level dB $\mu$ V	Transd dB	Limit dB $\mu$ V	Margin dB	Line	PE
3.075380	37.20	10.1	46	8.8	L1	FLO

Camera



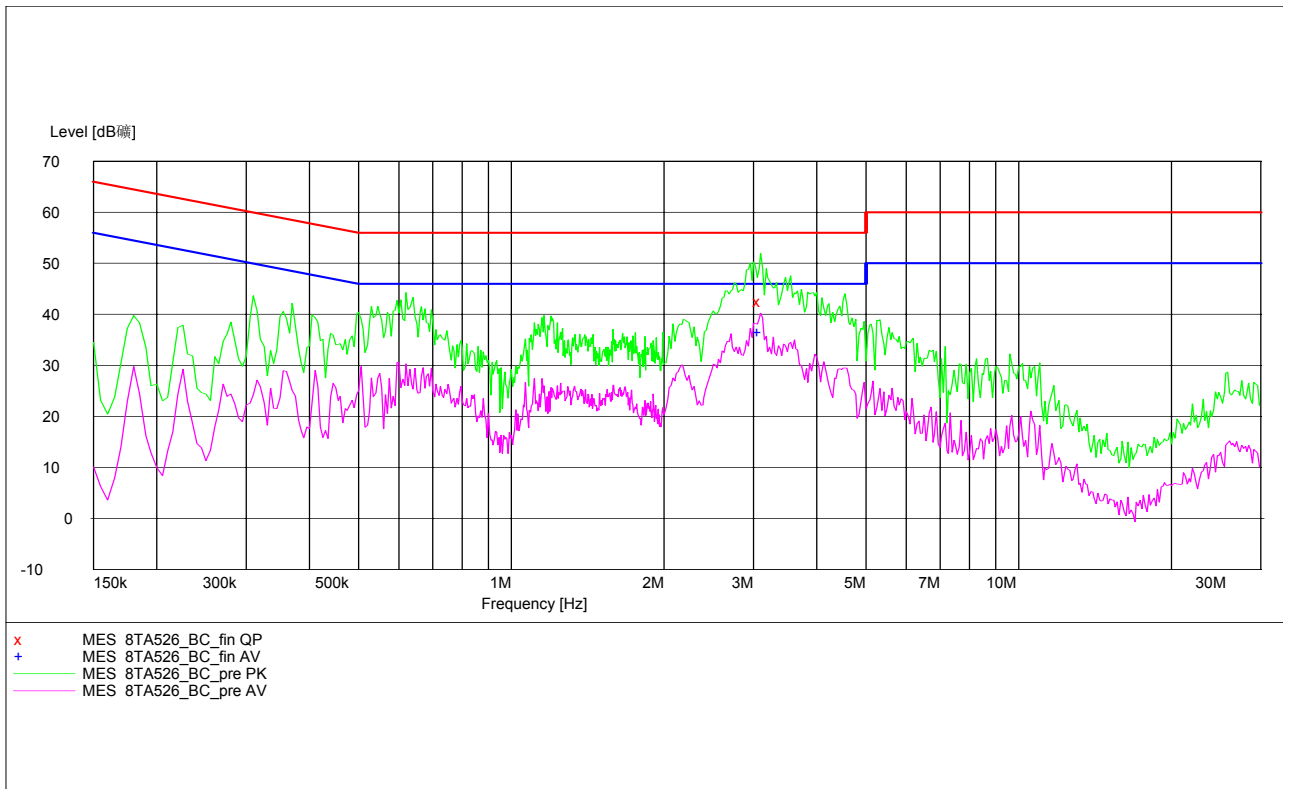
MEASUREMENT RESULT: "8TA526\_CC\_fin QP"

Frequency MHz	Level dBμV	Transd dB	Limit dBμV	Margin dB	Line	PE
3.026758	46.10	10.1	56	9.9	L1	GND

MEASUREMENT RESULT: "8TA526\_CC\_fin AV"

Frequency MHz	Level dBμV	Transd dB	Limit dBμV	Margin dB	Line	PE
3.099983	36.50	10.1	46	9.5	L1	GND

### Bluetooth



#### MEASUREMENT RESULT: "8TA526\_BC\_fin QP"

Frequency MHz	Level dBμV	Transd dB	Limit dBμV	Margin dB	Line	PE
3.099983	42.50	10.1	56	13.5	N	GND

#### MEASUREMENT RESULT: "8TA526\_BC\_fin AV"

Frequency MHz	Level dBμV	Transd dB	Limit dBμV	Margin dB	Line	PE
3.099983	36.40	10.1	46	9.6	L1	FLO

## **B.4 FREQUENCY STABILITY (§2.1055/§24.235)**

### **B.4.1 Method of Measurement**

In order to measure the carrier frequency under the condition of AFC lock, it is necessary to make measurements with the EUT in a "call mode". This is accomplished with the use of R&S CMU200 DIGITAL RADIO COMMUNICATION TESTER.

1. Measure the carrier frequency at room temperature.
2. Subject the EUT to overnight soak at -30°C.
3. With the EUT, powered via nominal voltage, connected to the CMU200 and in a simulated call on channel 661 for PCS 1900 and channel 190 for GSM850, measure the carrier frequency. These measurements should be made within 2 minutes of Powering up the EUT, to prevent significant self-warming.
4. Repeat the above measurements at 10°C increments from -30°C to +50°C. Allow at least 1 1/2 hours at each temperature, unpowered, before making measurements.
5. Remeasure carrier frequency at room temperature with nominal voltage. Vary supply voltage from minimum voltage to maximum voltage, in 0.1Volt increments remeasuring carrier frequency at each voltage. Pause at nominal voltage for 1 1/2 hours unpowered, to allow any self-heating to stabilize, before continuing.
6. Subject the EUT to overnight soak at +50°C.
7. With the EUT, powered via nominal voltage, connected to the CMU200 and in a simulated call on channel 661 (centre channel), measure the carrier frequency. These measurements should be made within 2 minutes of Powering up the EUT, to prevent significant self-warming.
8. Repeat the above measurements at 10 C increments from +50°C to -30°C. Allow at least 1 1/2 hours at each temperature, unpowered, before making measurements.
9. At all temperature levels hold the temperature to +/- 0.5°C during the measurement procedure.

### **B.4.2 Measurement Limit**

#### **B.4.2.1 For Hand carried battery powered equipment**

According to the JTC standard the frequency stability of the carrier shall be accurate to within 0.1 ppm of the received frequency from the base station. This accuracy is sufficient to meet Sec. 24.235, Frequency Stability. The frequency stability shall be sufficient to ensure that the fundamental emission stays within the authorized frequency block. As this transceiver is considered "Hand carried, battery powered equipment" Section 2.1055(d)(2) applies. This requires that the lower voltage for frequency stability testing be specified by the manufacturer. This transceiver is specified to operate with an input voltage of between 3.6VDC and 4.2VDC, with a nominal voltage of 3.8VDC. Operation above or below these voltage limits is prohibited by transceiver software in order to prevent improper operation as well as to protect components from overstress. These voltages represent a tolerance of -10 % and +12.5 %. For the purposes of measuring frequency stability these voltage limits are to be used.

#### **B.4.2.2 For equipment powered by primary supply voltage**

According to the JTC standard the frequency stability of the carrier shall be accurate to within 0.1 ppm of the received frequency from the base station. This accuracy is sufficient to meet Sec. 24.235, Frequency Stability. The frequency stability shall be sufficient to ensure that the

fundamental emission stays within the authorized frequency block. For this EUT section 2.1055(d)(1) applies. This requires varying primary supply voltage from 85 to 115 percent of the nominal value for other than hand carried battery equipment.

#### B.4.3 Measurement results

##### GSM 850

##### Frequency Error vs Voltage

Voltage(V)	Frequency error(Hz)	Frequency error(ppm)
3.5	22	0.026
3.7	20	0.024
4.2	24	0.028

##### Frequency Error vs Temperature

temperature(°C)	Frequency error(Hz)	Frequency error(ppm)
-30	28	0.033
-20	24	0.029
-10	22	0.026
0	23	0.027
10	21	0.025
20	21	0.025
30	20	0.024
40	26	0.031
50	29	0.035

##### PCS 1900

##### Frequency Error vs Voltage

Voltage(V)	Frequency error(Hz)	Frequency error(ppm)
3.5	37	0.020
3.7	35	0.019
4.2	36	0.019

##### Frequency Error vs Temperature

temperature(°C)	Frequency error(Hz)	Frequency error(ppm)
-30	45	0.024
-20	43	0.023
-10	40	0.021
0	37	0.020
10	38	0.020
20	36	0.019
30	38	0.020
40	40	0.021
50	42	0.022

## **B.5 OCCUPIED BANDWIDTH (§2.1049(h)(i))**

### **B.5.1 Occupied Bandwidth Results**

Similar to conducted emissions; occupied bandwidth measurements are only provided for selected frequencies in order to reduce the amount of submitted data. Data were taken at the extreme and mid frequencies of the USPCS frequency band. The table below lists the measured -20dBc BW (99%). Spectrum analyzer plots are included on the following pages.

#### **GSM 850(-20dBc)**

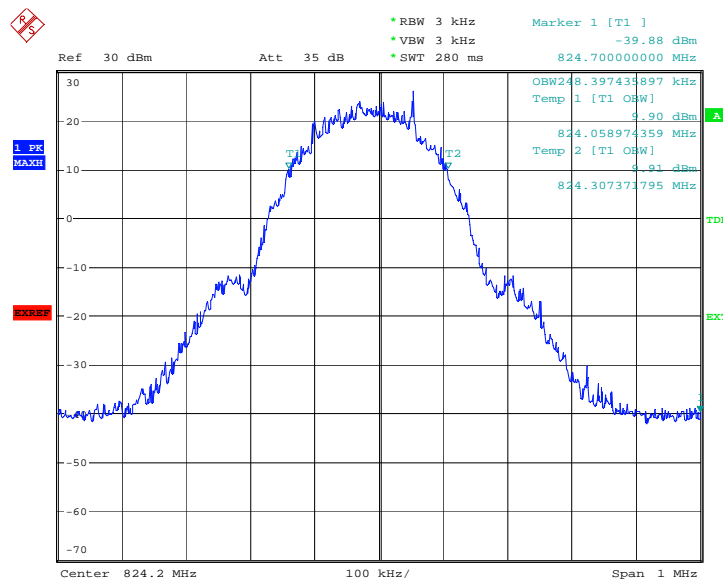
EUT1:

Frequency(MHz)	Occupied Bandwidth (99% BW)( kHz)
824.2	248.397
836.6	246.795
848.8	250.000

**ANALYZER SETTINGS: RBW=VBW=3kHz**

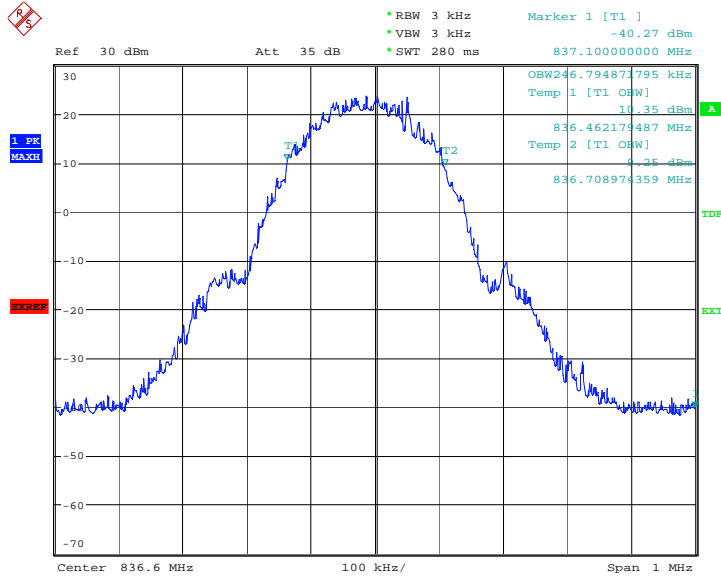
#### **GSM 850**

#### **Channel 128-Occupied Bandwidth (99% BW)**



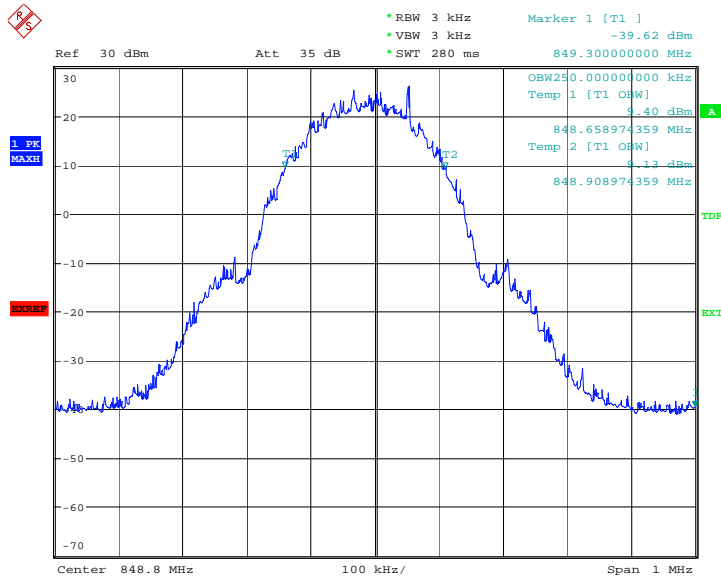
Date: 20.JUN.2008 08:53:30

### Channel 190-Occupied Bandwidth (99% BW)



Date: 20.JUN.2008 08:52:38

### Channel 251-Occupied Bandwidth (99% BW)



Date: 20.JUN.2008 08:51:41

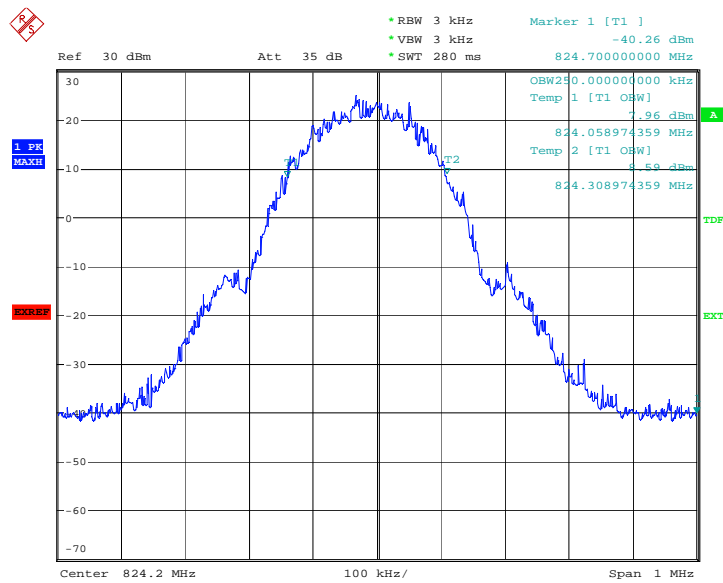
**GPRS**

Frequency(MHz)	Occupied Bandwidth (99% BW)( kHz)
824.2	250.000
836.6	250.000
848.8	251.603

**ANALYZER SETTINGS: RBW=VBW=3kHz**

**GPRS**

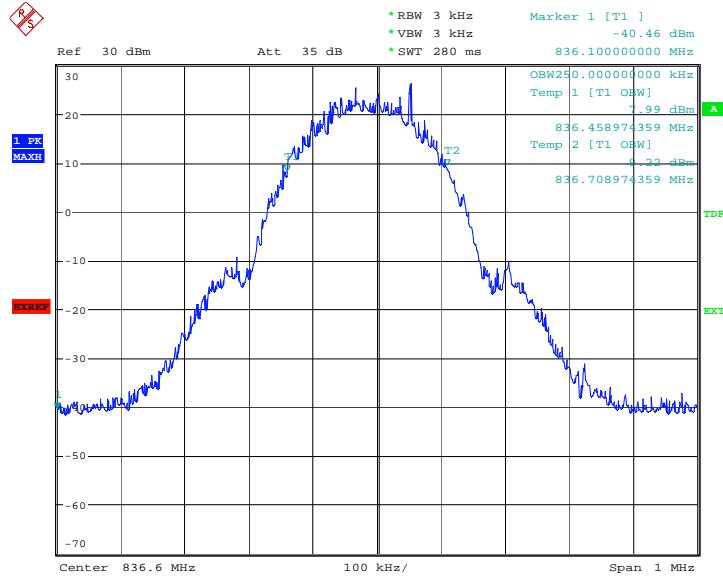
**Channel 128-Occupied Bandwidth (99% BW)**



Date: 20.JUN.2008 09:54:39

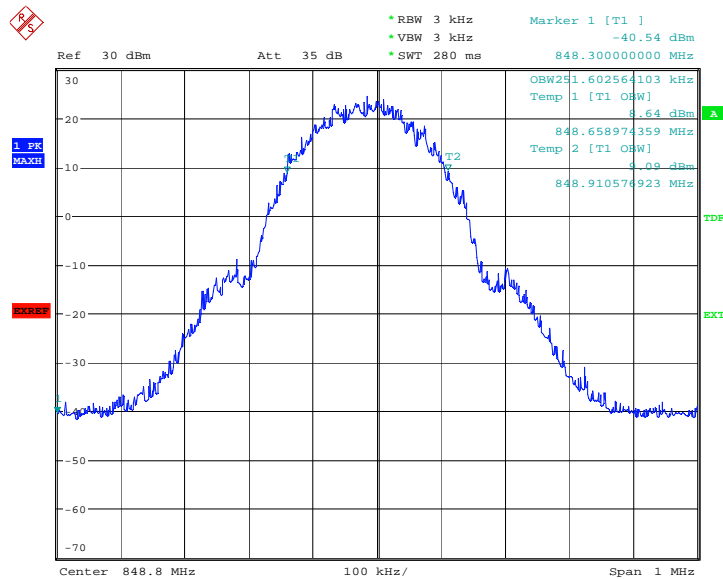


### Channel 190-Occupied Bandwidth (99% BW)



Date: 20.JUN.2008 09:55:35

### Channel 251-Occupied Bandwidth (99% BW)



Date: 20.JUN.2008 09:56:36

**PCS 1900(99%)**

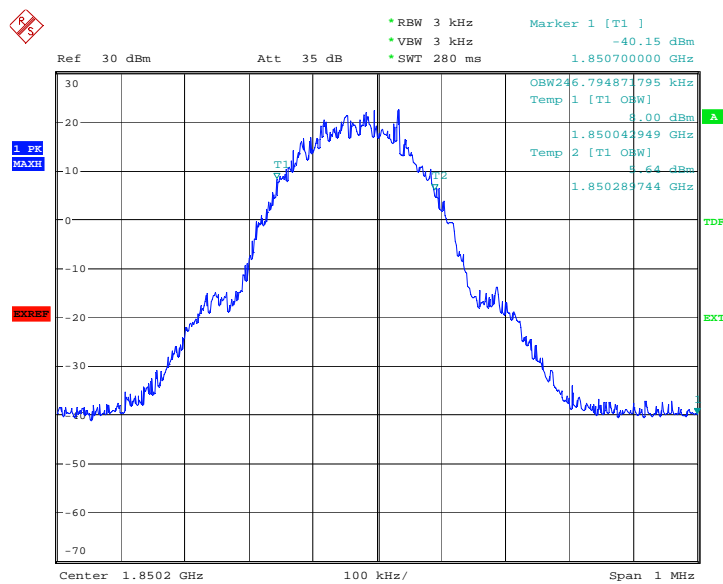
EUT1:

Frequency(MHz)	Occupied Bandwidth (99% BW)( kHz)
1850.2	246.795
1880.0	251.602
1909.8	246.795

**ANALYZER SETTINGS: RBW=VBW=3kHz**

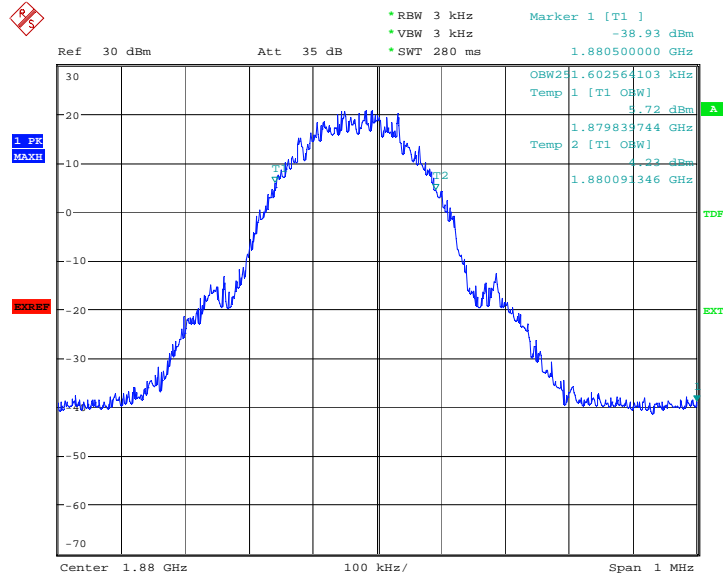
**PCS 1900**

**Channel 512-Occupied Bandwidth (99% BW)**



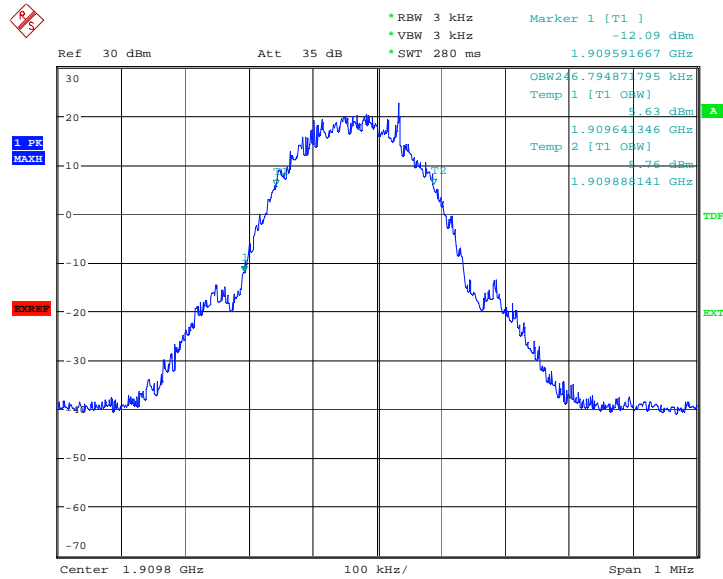
Date: 20.JUN.2008 08:49:52

### Channel 661-Occupied Bandwidth (99% BW)



Date: 20.JUN.2008 08:48:50

### Channel 810-Occupied Bandwidth (99% BW)



Date: 20.JUN.2008 08:47:52

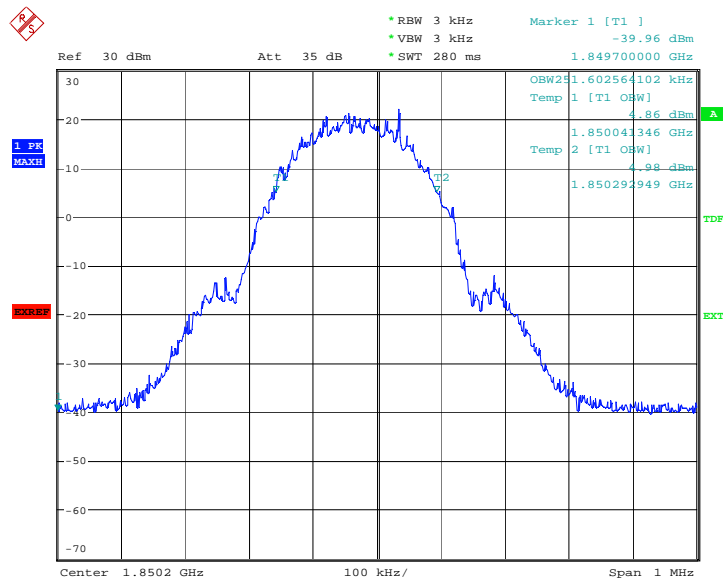
**GPRS**

Frequency(MHz)	Occupied Bandwidth (99% BW)( kHz)
1850.2	251.603
1880.0	250.000
1909.8	251.603

**ANALYZER SETTINGS: RBW=VBW=3kHz**

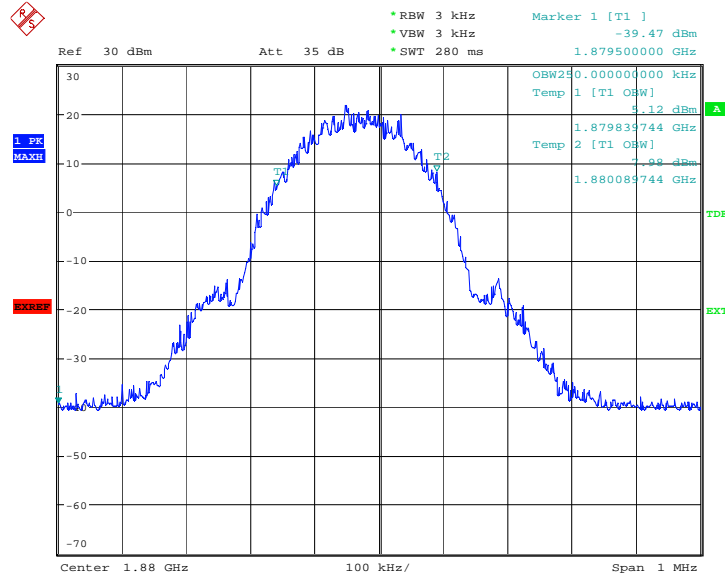
**GPRS**

**Channel 512-Occupied Bandwidth (99% BW)**



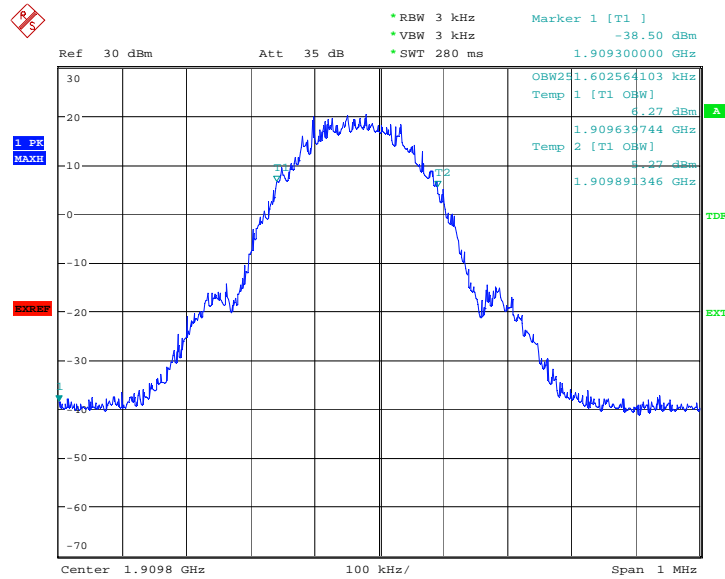
Date: 20.JUN.2008 09:58:18

### Channel 661-Occupied Bandwidth (99% BW)



Date: 20.JUN.2008 09:59:11

### Channel 810-Occupied Bandwidth (99% BW)



Date: 20.JUN.2008 10:00:05

**B.6 EMISSION BANDWIDTH** (§22.917(b)/§24.238(b))

**B.6.1 Emission Bandwidth Results**

Similar to conducted emissions; Emission bandwidth measurements are only provided for selected frequencies in order to reduce the amount of submitted data. Data were taken at the extreme and mid frequencies of the PCS1900 band and GSM850 band. Table below lists the measured -26dBc BW. Spectrum analyzer plots are included on the following pages.

**GSM 850(-26dBc)**

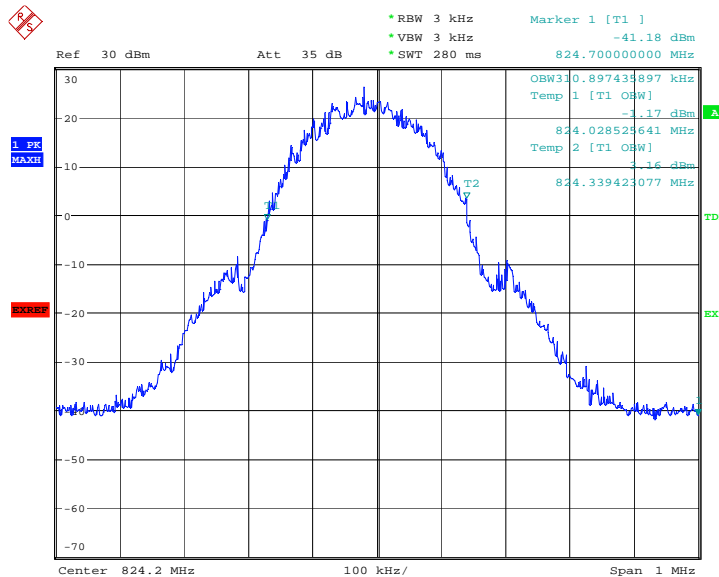
EUT1:

Frequency(MHz)	Occupied Bandwidth (-26dBc BW)( kHz)
824.2	310.897
836.6	315.705
848.8	314.103

**ANALYZER SETTINGS: RBW=VBW=3kHz**

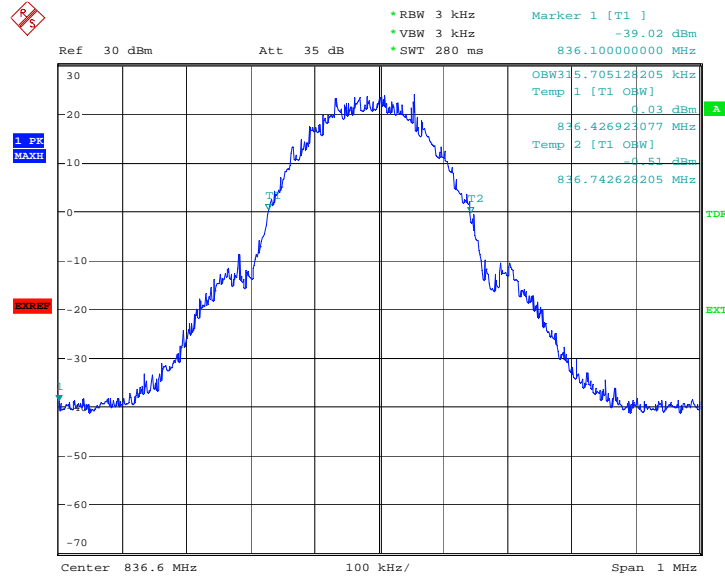
**GSM 850**

**Channel 128-Occupied Bandwidth (-26dBc BW)**



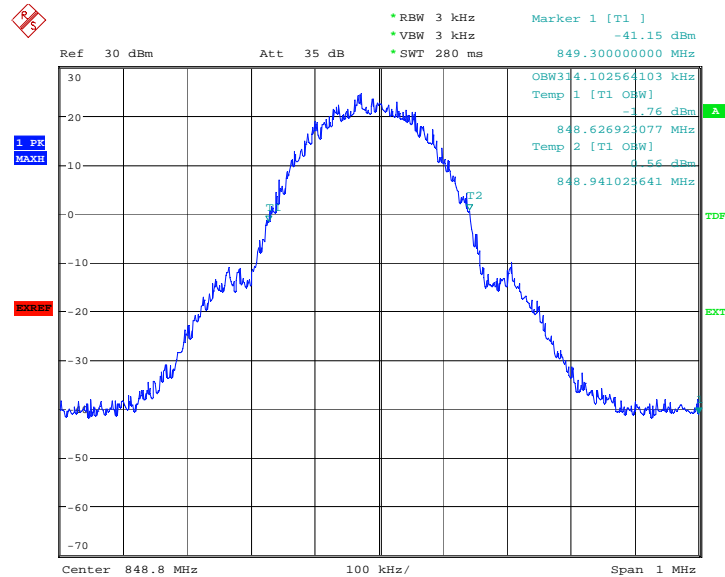
Date: 20.JUN.2008 08:54:34

### Channel 190-Occupied Bandwidth (-26dBc BW)



Date: 20.JUN.2008 08:55:39

### Channel 251-Occupied Bandwidth (-26dBc BW)



Date: 20.JUN.2008 08:56:51

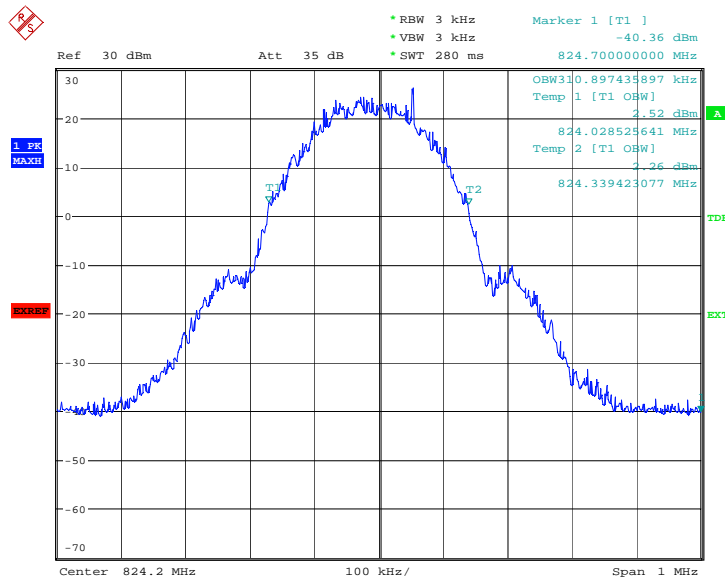
**GPRS**

Frequency(MHz)	Occupied Bandwidth (-26dBc BW)( kHz)
824.2	310.897
836.6	310.897
848.8	310.897

**ANALYZER SETTINGS: RBW=VBW=3kHz**

**GPRS**

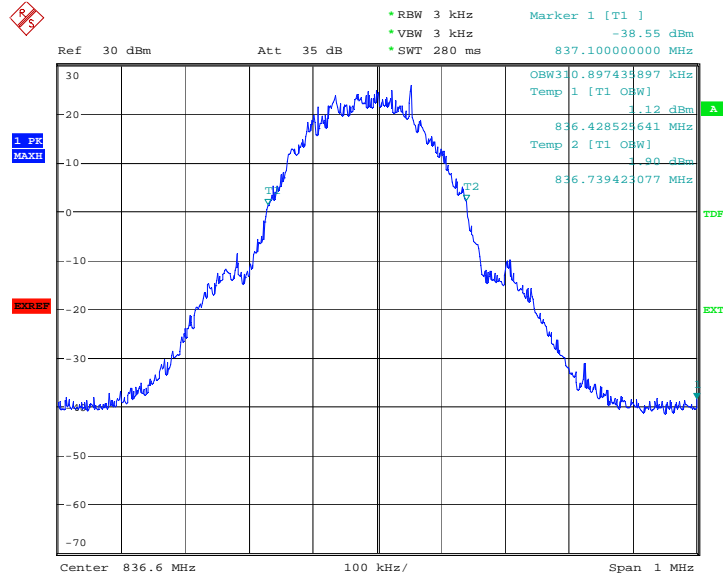
**Channel 128-Occupied Bandwidth (-26dBc BW)**



Date: 20.JUN.2008 09:53:48

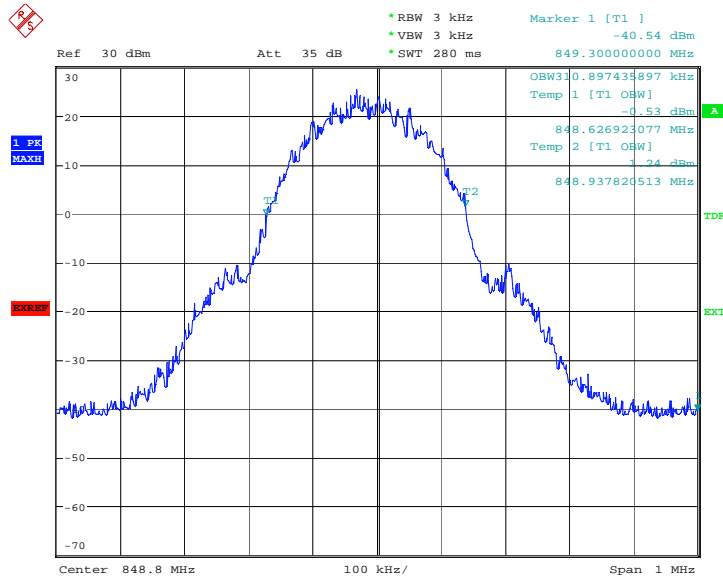


### Channel 190-Occupied Bandwidth (-26dBc BW)



Date: 20.JUN.2008 09:52:25

### Channel 251-Occupied Bandwidth (-26dBc BW)



Date: 20.JUN.2008 09:51:03

**PCS 1900(-26dBc)**

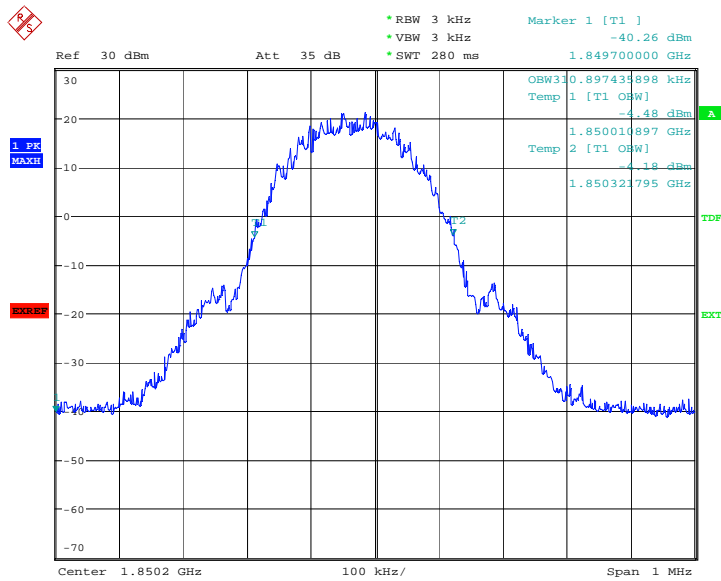
EUT1:

Frequency(MHz)	Occupied Bandwidth (-26dBc BW)( kHz)
1850.2	310.897
1880.0	310.897
1909.8	309.295

**ANALYZER SETTINGS: RBW=VBW=3kHz;**

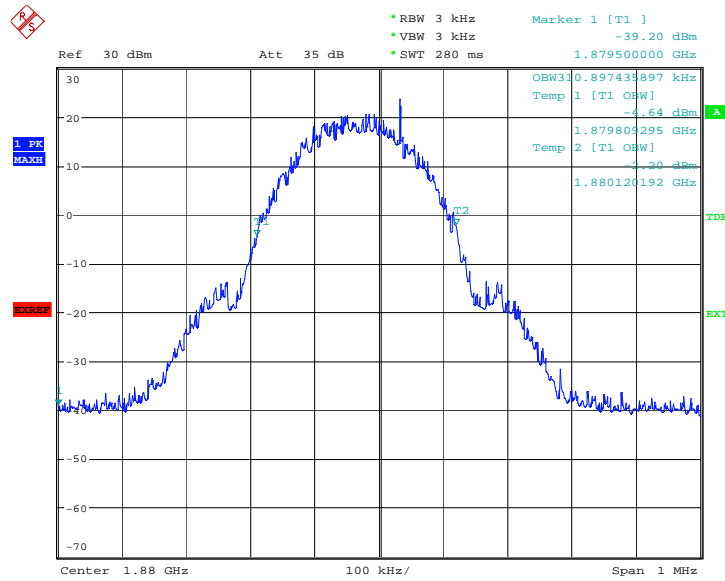
**PCS 1900**

**Channel 512-Occupied Bandwidth (-26dBc BW)**



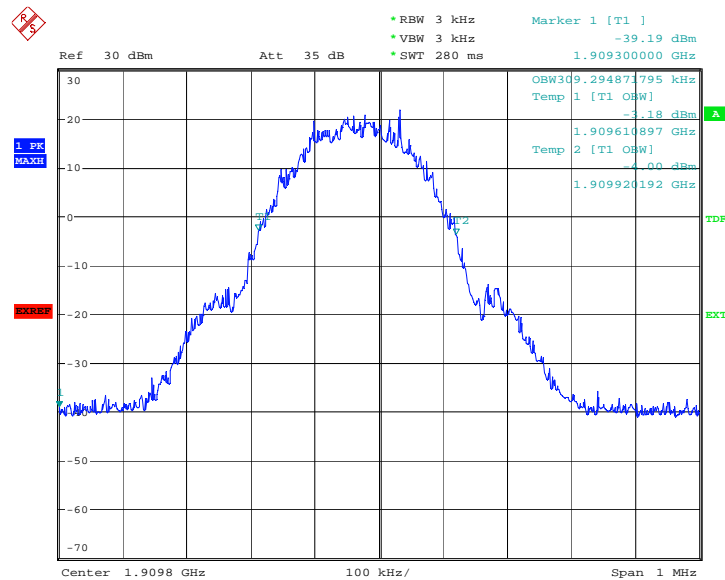
Date: 20.JUN.2008 08:58:03

### Channel 661-Occupied Bandwidth (-26dBc BW)



Date: 20.JUN.2008 08:59:05

### Channel 810-Occupied Bandwidth (-26dBc BW)



Date: 20.JUN.2008 08:59:55

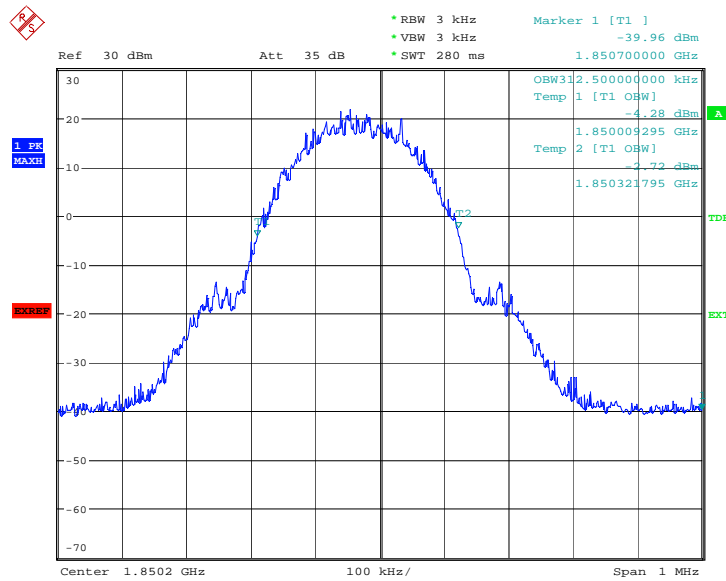
**GPRS**

Frequency(MHz)	Occupied Bandwidth (-26dBc BW)( kHz)
1850.2	312.500
1880.0	312.500
1909.8	312.500

**ANALYZER SETTINGS: RBW=VBW=3kHz;**

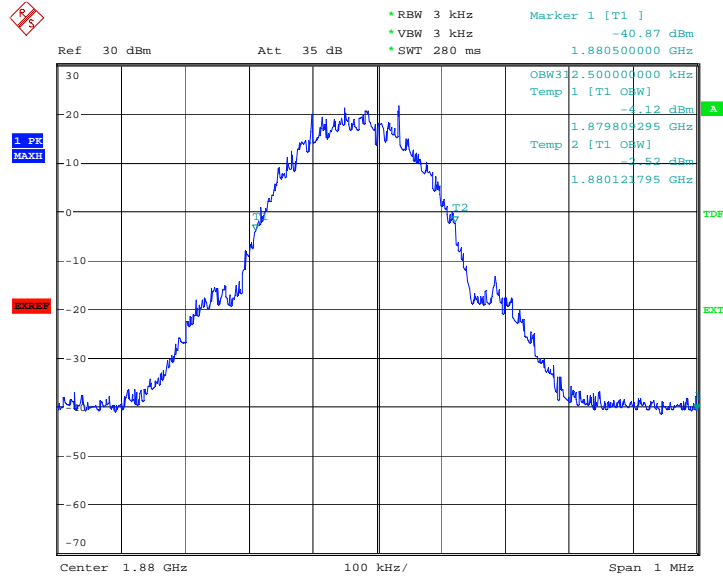
**GPRS**

**Channel 512-Occupied Bandwidth (-26dBc BW)**



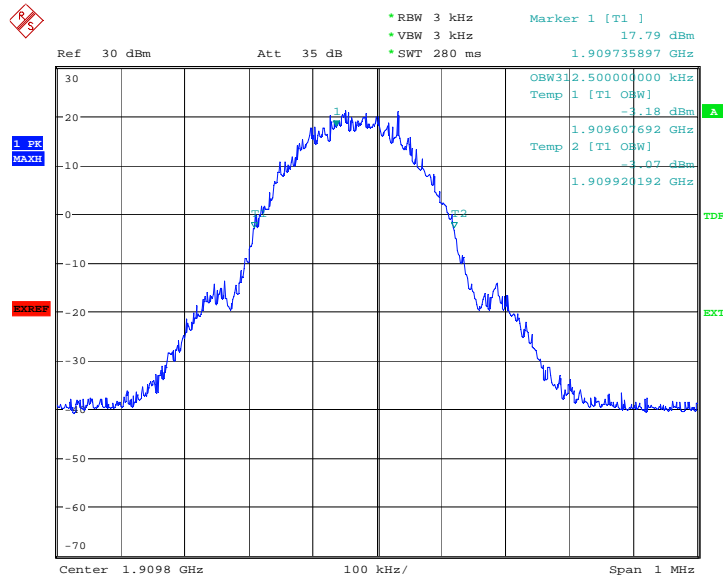
Date: 20.JUN.2008 09:49:55

### Channel 661-Occupied Bandwidth (-26dBc BW)



Date: 20.JUN.2008 09:49:01

### Channel 810-Occupied Bandwidth (-26dBc BW)

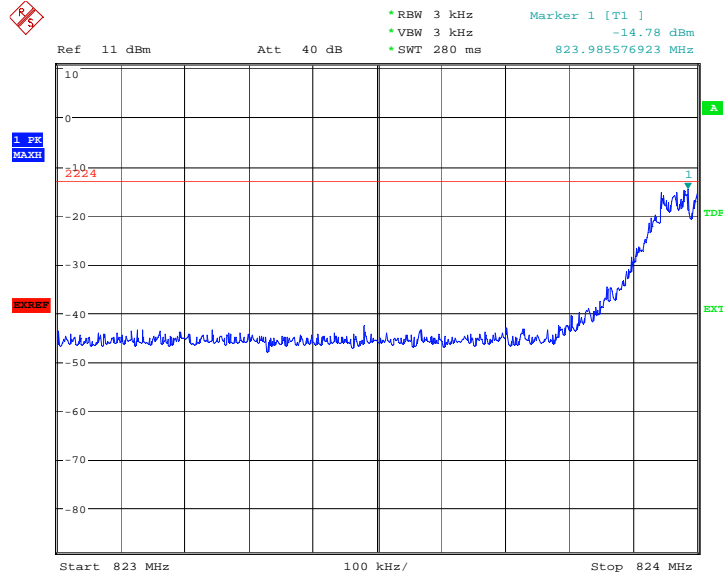


Date: 20.JUN.2008 09:48:18

**B.7 BAND EDGE COMPLIANCE** (§22.917(b)/§24.238(b))

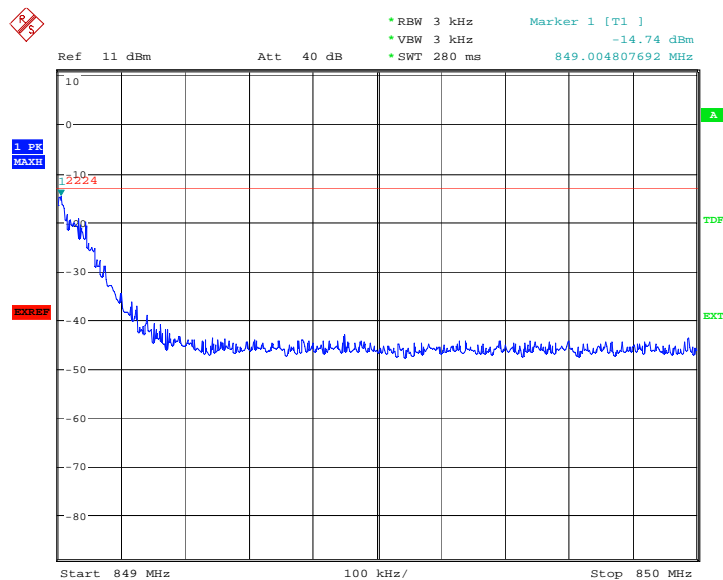
**GSM850**

**LOW BAND EDGE BLOCK-A (GSM850)-Channel 128**



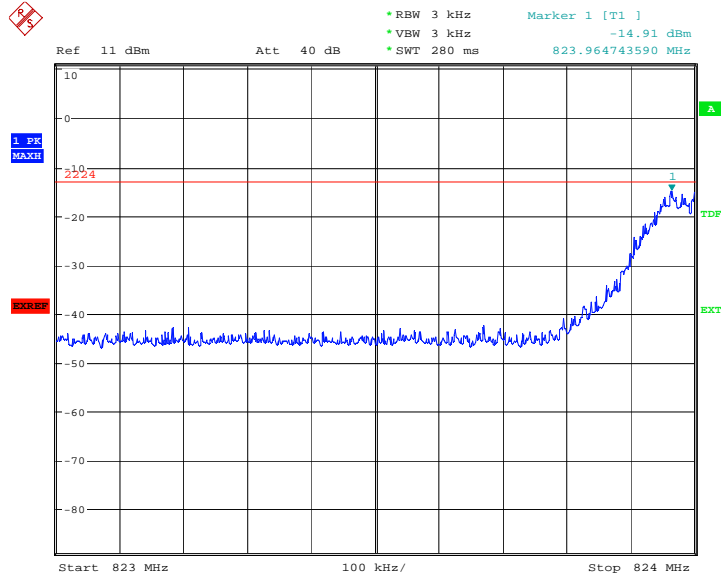
Date: 20.JUN.2008 09:27:04

**HIGH BAND EDGE BLOCK-C (GSM850) -Channel 251**



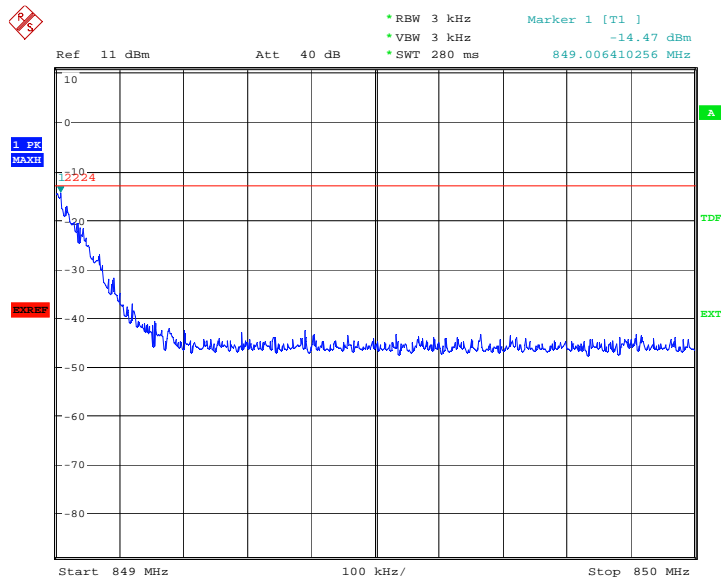
Date: 20.JUN.2008 09:28:15

**GPRS**  
**LOW BAND EDGE BLOCK-A (GSM850)-Channel 128**



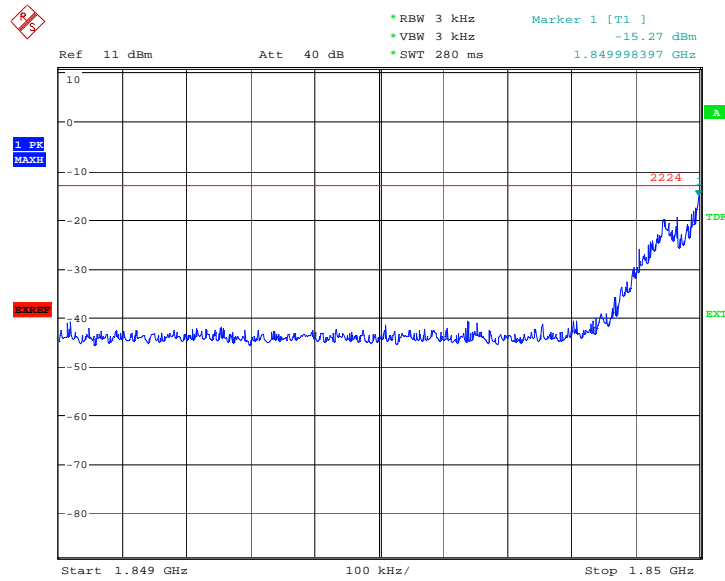
Date: 20.JUN.2008 09:39:06

**HIGH BAND EDGE BLOCK-C (GSM850) –Channel 251**



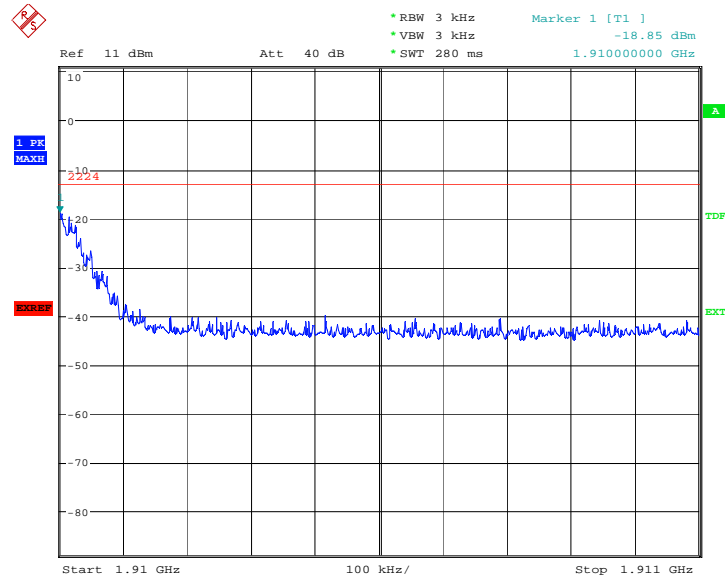
Date: 20.JUN.2008 09:39:54

**PCS 1900**  
**LOW BAND EDGE BLOCK-A (PCS-1900)-Channel 512**



Date: 20.JUN.2008 09:30:24

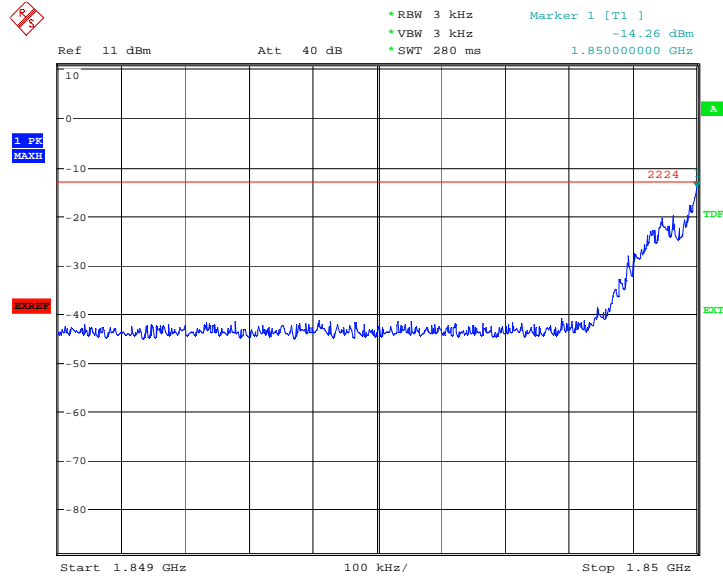
**HIGH BAND EDGE BLOCK-C (PCS-1900) –Channel 810**



Date: 20.JUN.2008 09:31:27

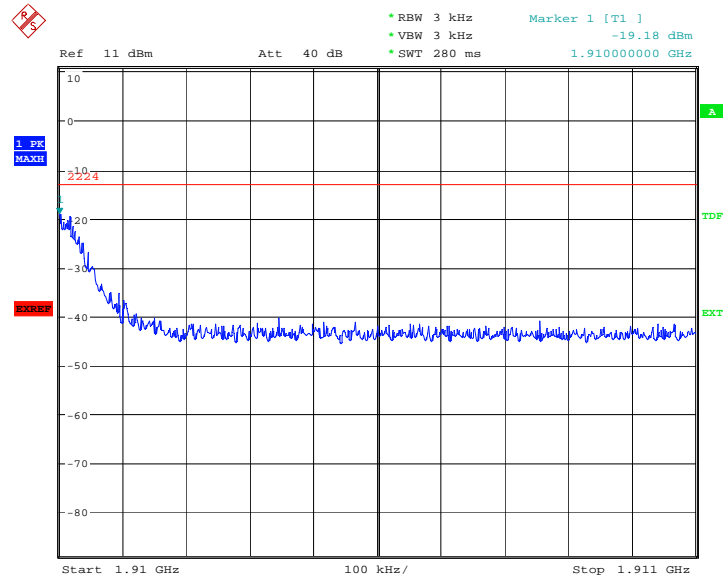


**GPRS**  
**LOW BAND EDGE BLOCK-A (PCS-1900)-Channel 512**



Date: 20.JUN.2008 09:37:14

**HIGH BAND EDGE BLOCK-C (PCS-1900) -Channel 810**



Date: 20.JUN.2008 09:35:32

**B.8 CONDUCTED SPURIOUS EMISSION** (§2.1057/§22.917/§24.238)

**B.8.1 Measurement Method**

The following steps outline the procedure used to measure the conducted emissions from the EUT.

1. Determine frequency range for measurements: From CFR 2.1057 the spectrum should be investigated from the lowest radio frequency generated in the equipment up to at least the 10th harmonic of the carrier frequency. For the equipment of PCS1900 band, this equates to a frequency range of 30 MHz to 19.1 GHz, data taken from 30 MHz to 20 GHz. For GSM850, data taken from 30 MHz to 9 GHz.
2. Determine EUT transmit frequencies: below outlines the band edge frequencies pertinent to conducted emissions testing.

**GSM850 Transmitter**

Channel	Frequency (MHz)
128	824.2
190	836.6
251	848.8

**PCS1900 Transmitter**

Channel	Frequency (MHz)
512	1850.2
661	1880.0
810	1909.8

**B. 8.2 Measurement Limit**

Sec. 24.238 Emission Limits.

(a) On any frequency outside frequency band of the USPCS spectrum, the power of any emission shall be attenuated below the transmitter power (P, in Watts) by at least  $43+10\log(P)$  dB. For all power levels +30 dBm to 0 dBm, this becomes a constant specification limit of -13 dBm.

**B. 8.3 Measurement result**

**GSM850**

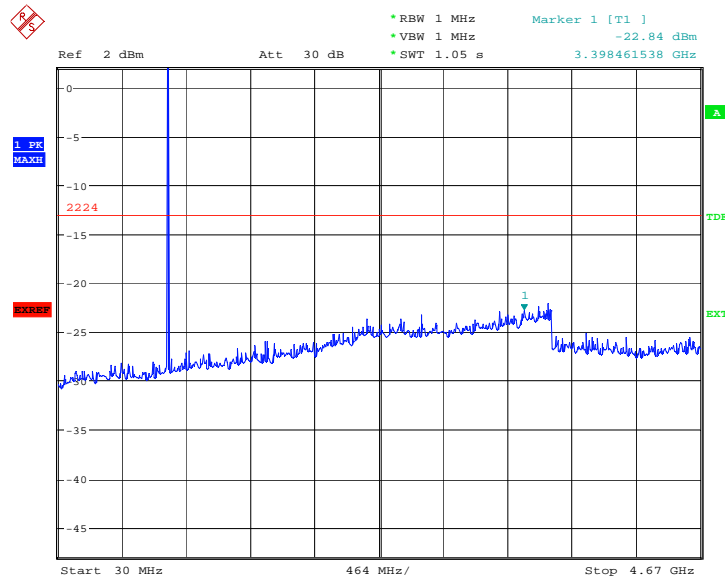
Harmonic	Tx ch. 128 Freq. (MHz)	Level (dBm)	Tx ch. 190 Freq. (MHz)	Level (dBm)	Tx ch. Freq. (MHz) 251	Level (dBm)
2	1648.4	nf	1673.2	nf	1697.6	nf
3	2472.6	nf	2509.8	nf	2546.4	nf
4	3296.8	nf	3346.4	nf	3395.2	nf
5	4121	nf	4183	nf	4244	nf
6	4945.2	nf	5019.6	nf	5092.8	nf
7	5769.4	nf	5856.2	nf	5941.6	nf
8	6593.6	nf	6692.8	nf	6790.4	nf
9	7417.8	nf	7529.4	nf	7639.2	nf
10	8242	nf	8366	nf	8488	nf

nf: Noise floor

### B.8.3.1 Channel 128: 30MHz – 4GHz

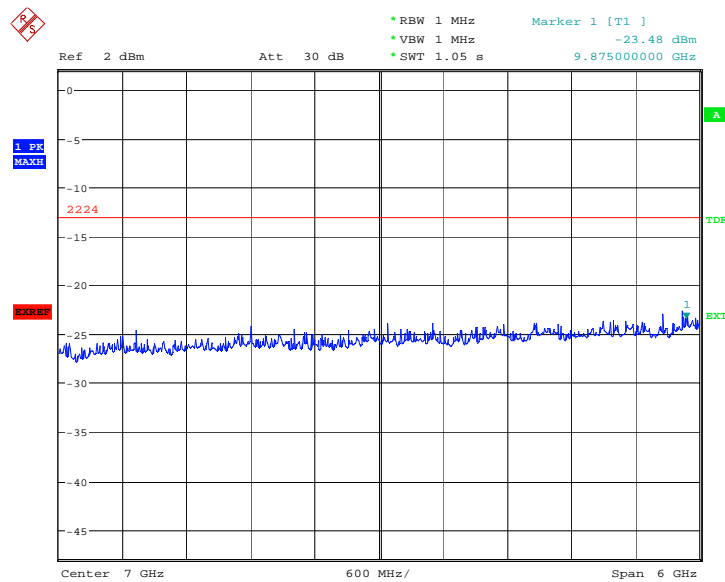
Spurious emission limit –13dBm.

**NOTE: peak above the limit line is the carrier frequency.**



### B.8.3.2 Channel 128: 4GHz – 10GHz

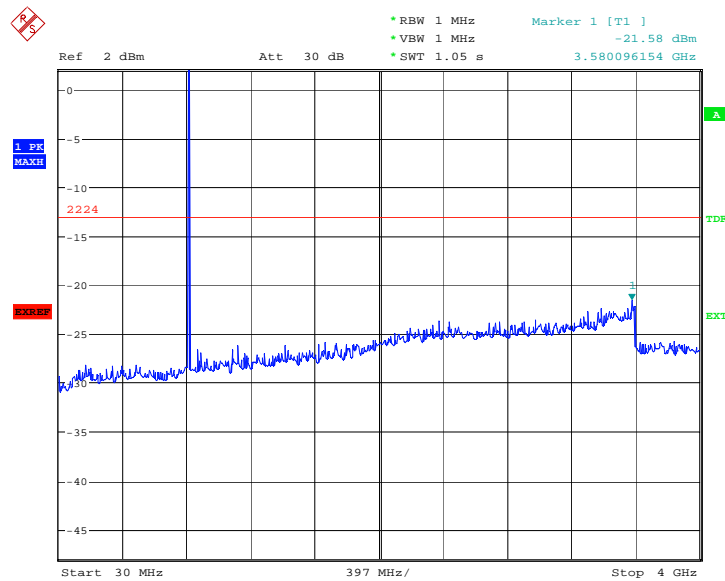
Spurious emission limit –13dBm.



### B.8.3.3 Channel 190: 30MHz – 4GHz

Spurious emission limit –13dBm

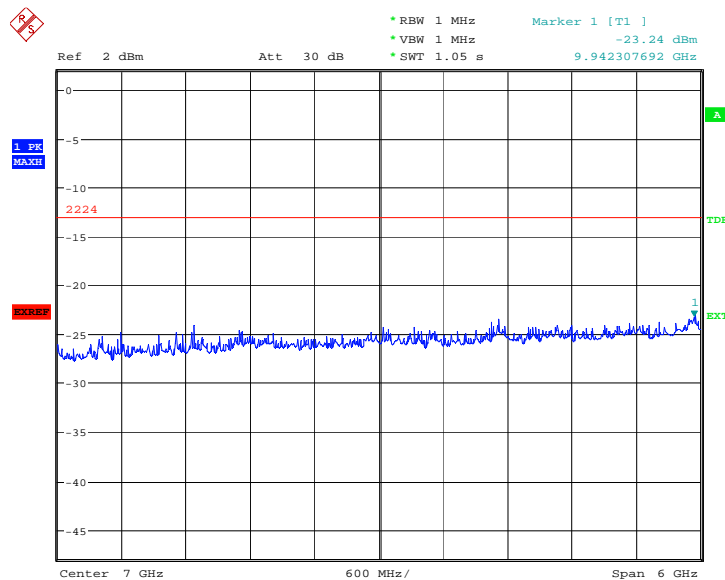
**NOTE: peak above the limit line is the carrier frequency.**



Date: 20.JUN.2008 09:15:32

### B.8.3.4 Channel 190: 4GHz –10GHz

Spurious emission limit –13dBm

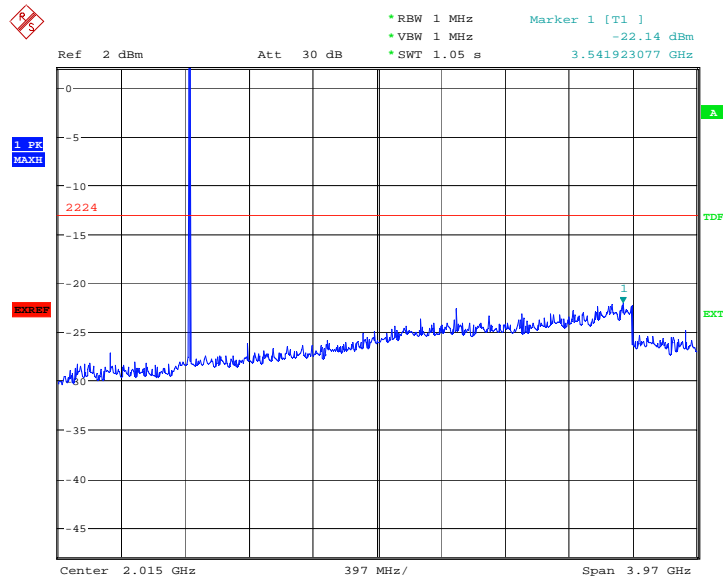


Date: 20.JUN.2008 09:14:51

### B.8.3.5 Channel 251: 30MHz – 4GHz

Spurious emission limit –13dBm.

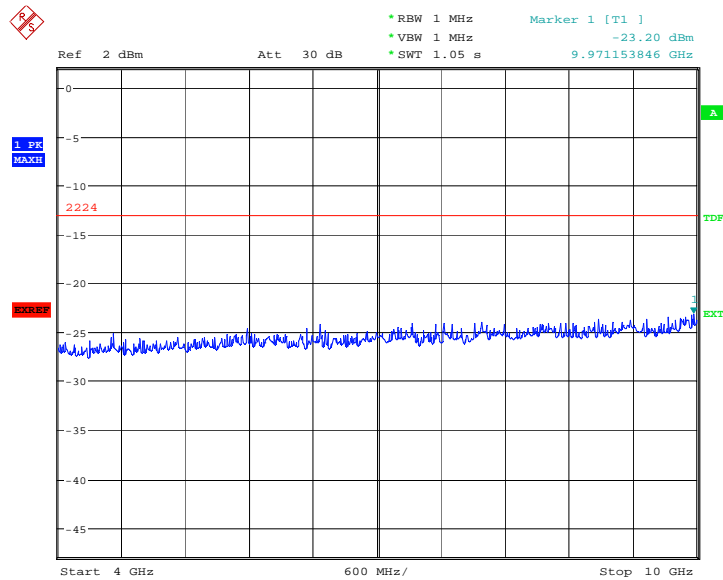
**NOTE: peak above the limit line is the carrier frequency.**



Date: 20.JUN.2008 09:16:51

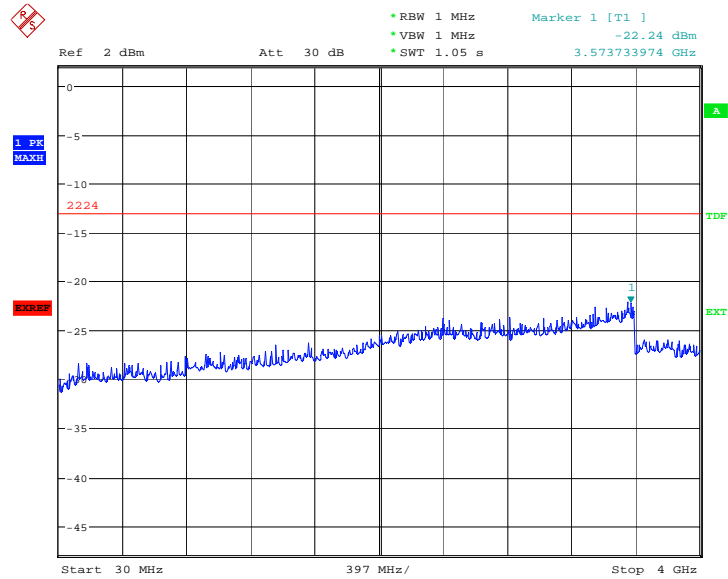
### B.8.3.6 Channel 251: 4GHz – 10GHz

Spurious emission limit –13dBm.



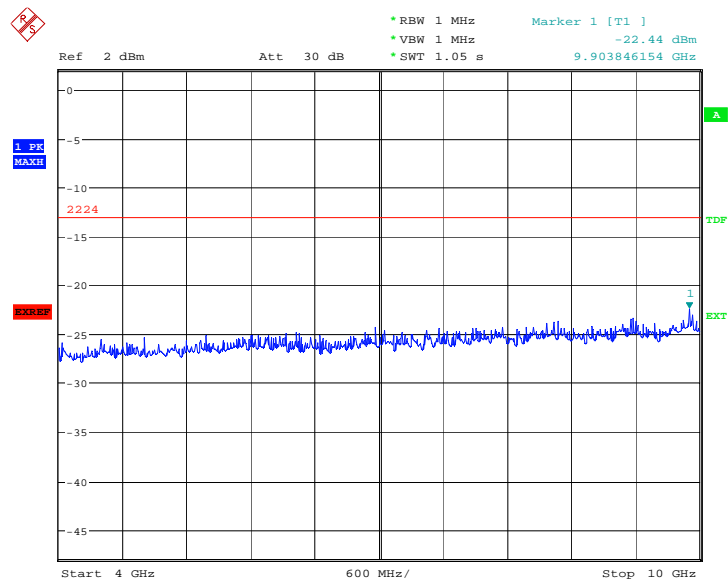
Date: 20.JUN.2008 09:17:56

**B.8.3.7 Idle mode: 30MHz – 4GHz**  
Spurious emission limit –13dBm.



Date: 20.JUN.2008 09:24:28

**B.8.3.8 Idle mode: 4GHz – 10GHz**  
Spurious emission limit –13dBm.



Date: 20.JUN.2008 09:24:55

**PCS1900**

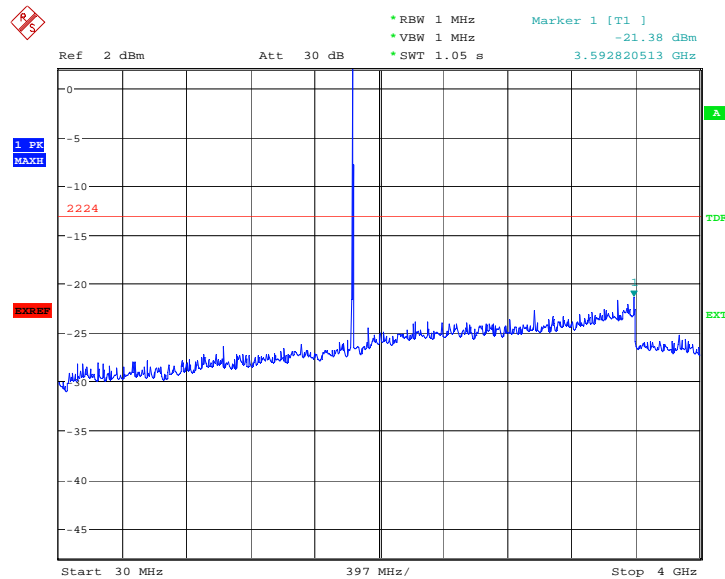
Harmonic	Tx ch. 512 Freq. (MHz)	Level (dBm)	Tx ch. 661 Freq. (MHz)	Level (dBm)	Tx ch. 810 Freq. (MHz)	Level (dBm)
2	3700.4	nf	3760	nf	3819.6	nf
3	5550.6	nf	5640	nf	5729.4	nf
4	7400.8	nf	7520	nf	7639.2	nf
5	9251.0	nf	9400	nf	9549.0	nf
6	11101.2	nf	11280	nf	11458.8	nf
7	12951.4	nf	13160	nf	13368.6	nf
8	14801.6	nf	15040	nf	15278.4	nf
9	16651.8	nf	16920	nf	17188.2	nf
10	18502.0	nf	18800	nf	19098.0	nf

nf: Noise floor

**B. 8.3.9 Channel 512: 30MHz – 4GHz**

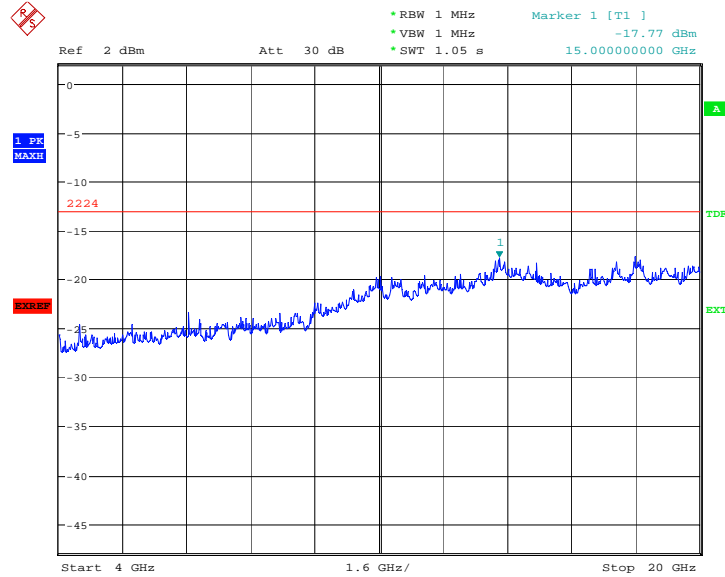
Spurious emission limit –13dBm.

**NOTE: peak above the limit line is the carrier frequency.**



Date: 20.JUN.2008 09:19:27

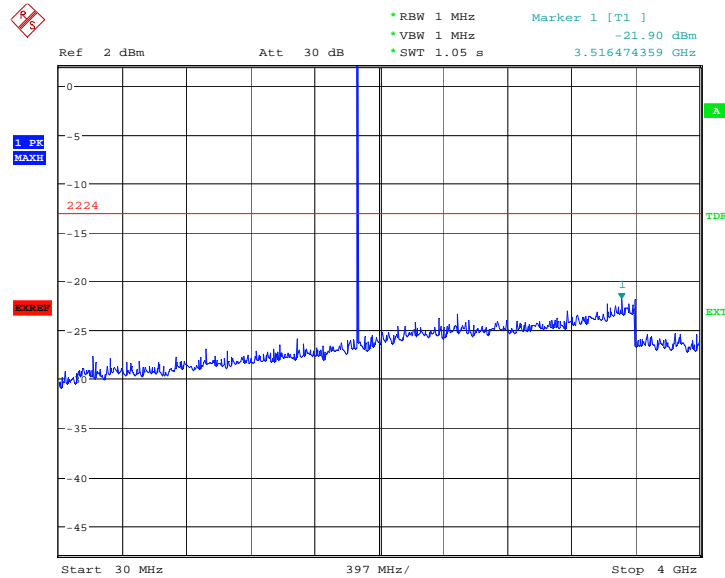
**B. 8.3.10 Channel 512: 4GHz – 20GHz**  
Spurious emission limit –13dBm.



Date: 20.JUN.2008 09:20:07

**B. 8.3.11 Channel 661: 30MHz – 4GHz**  
Spurious emission limit –13dBm

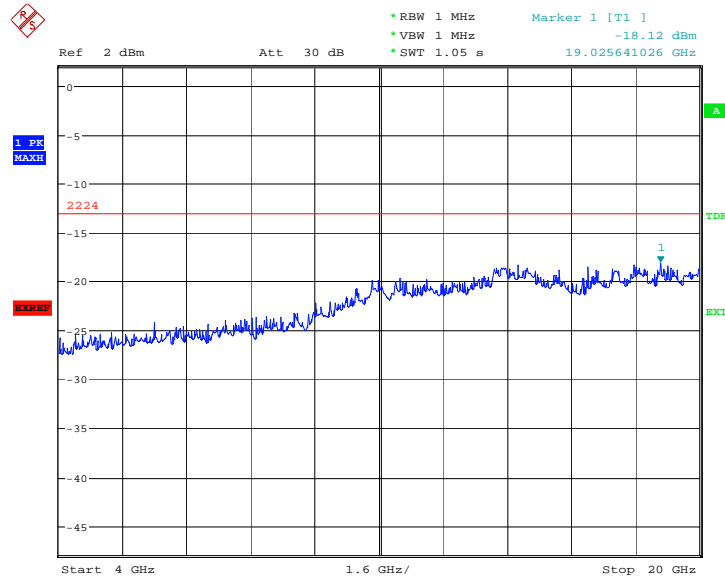
**NOTE: peak above the limit line is the carrier frequency.**



Date: 20.JUN.2008 09:21:34



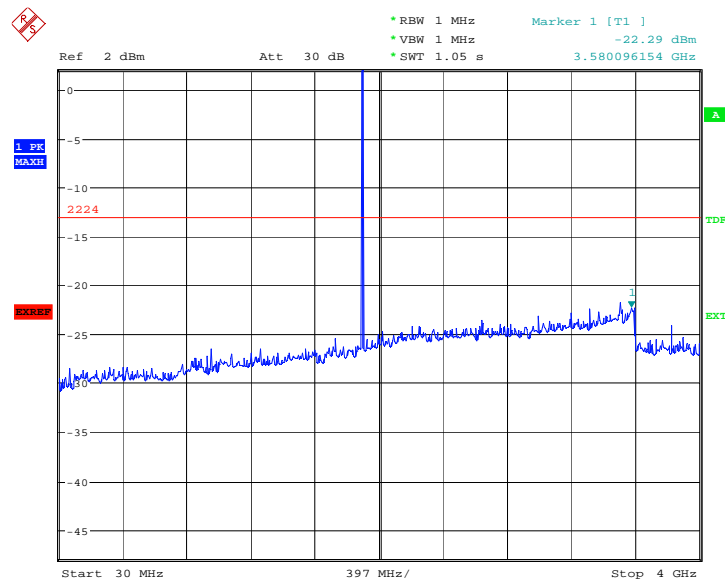
**B. 8.3.12 Channel 661: 4GHz –20GHz**  
Spurious emission limit –13dBm



Date: 20.JUN.2008 09:20:49

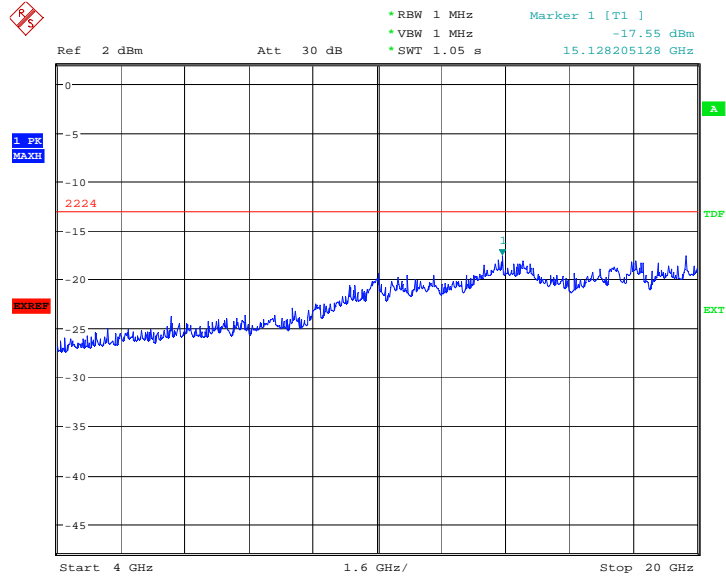
**B. 8.3.13 Channel 810: 30MHz – 4GHz**  
Spurious emission limit –13dBm.

**NOTE: peak above the limit line is the carrier frequency.**



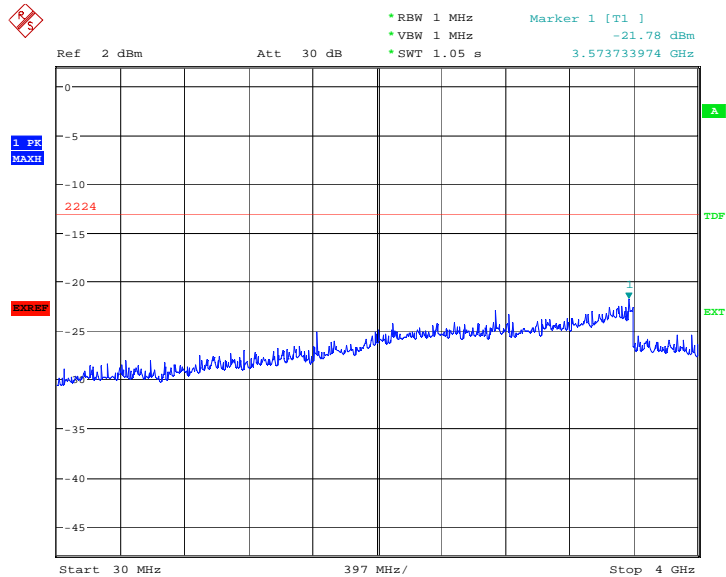
Date: 20.JUN.2008 09:22:18

**B. 8.3.14 Channel 810: 4GHz – 20GHz**  
Spurious emission limit –13dBm.



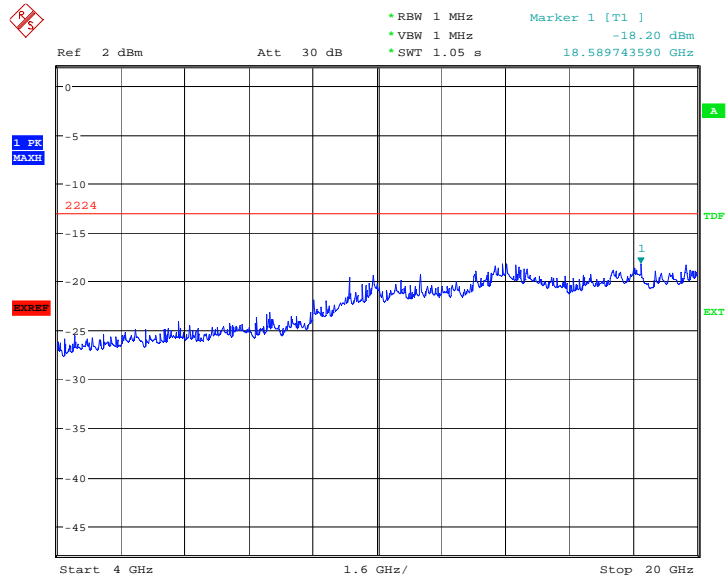
Date: 20.JUN.2008 09:23:04

**B. 8.3.15 Idle mode: 30MHz – 4GHz**  
Spurious emission limit –13dBm.

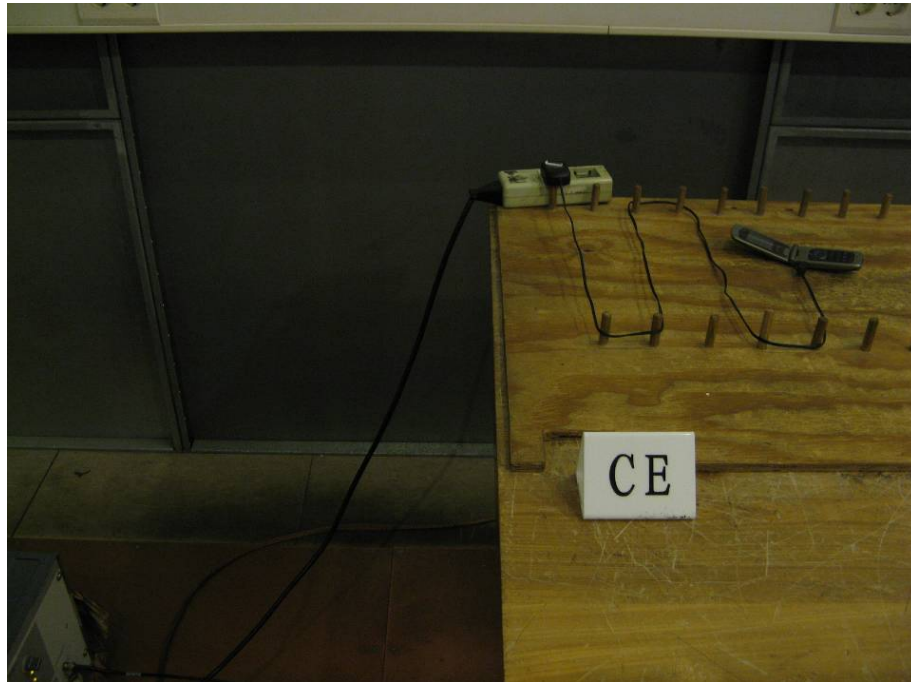


Date: 20.JUN.2008 09:24:11

**B. 8.3.16 Idle mode: 4GHz – 20GHz**  
Spurious emission limit -13dBm.



Date: 20.JUN.2008 09:23:45

**ANNEX C: TEST LAYOUT**

**Pic C-1 Conducted Emission**



**Pic C-2 Radiated Spurious Emission**

**\*\*\*END OF REPORT\*\*\***