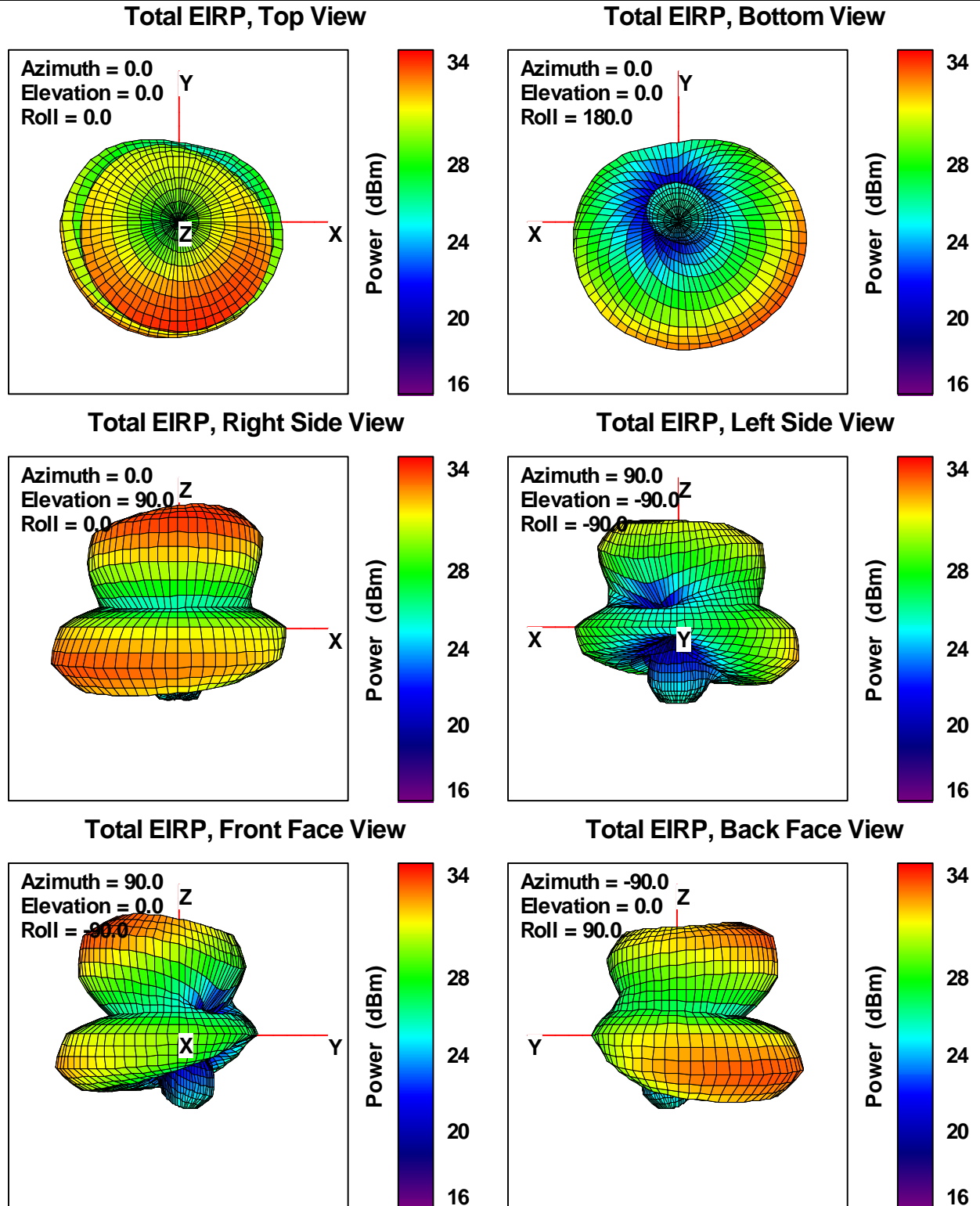
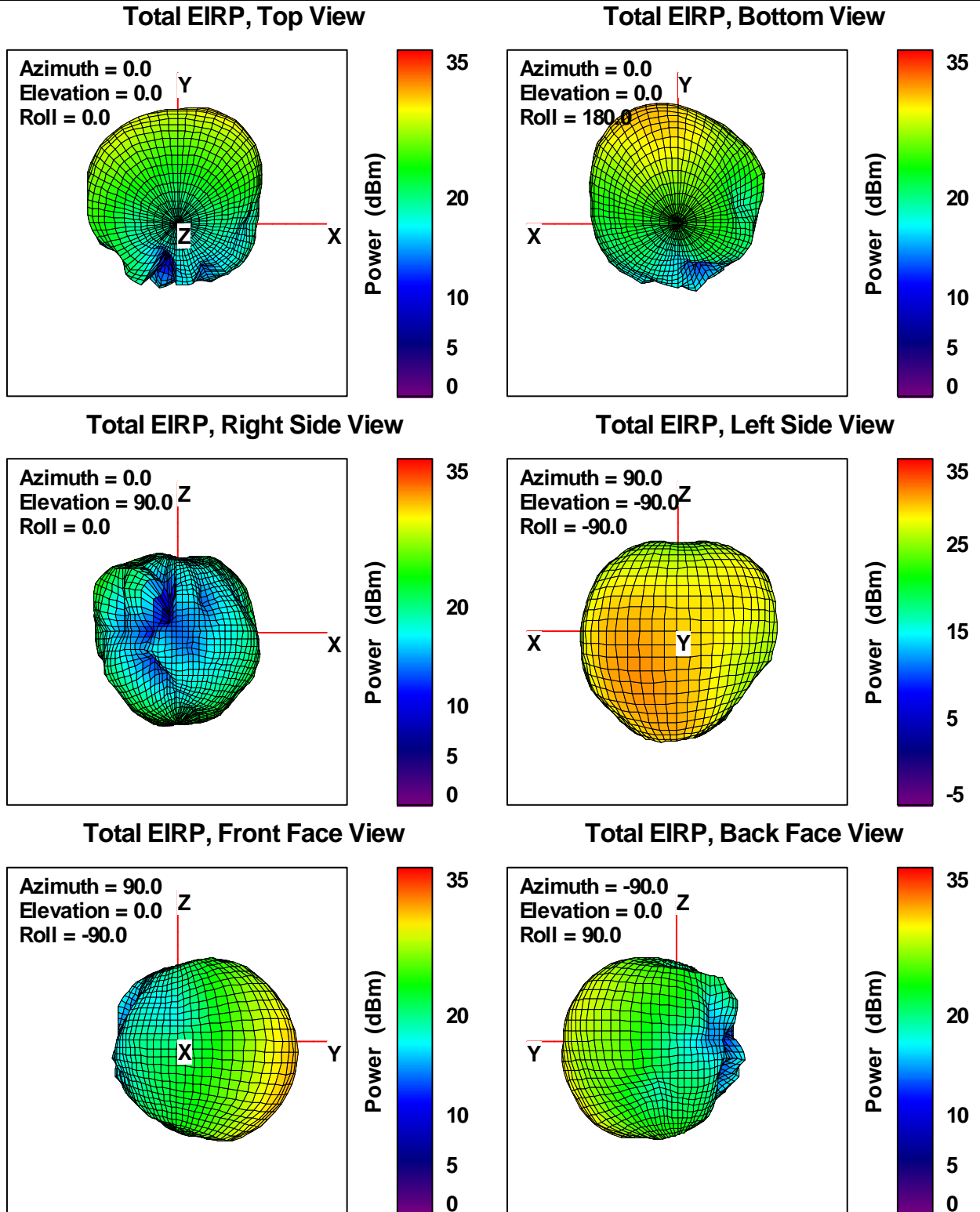


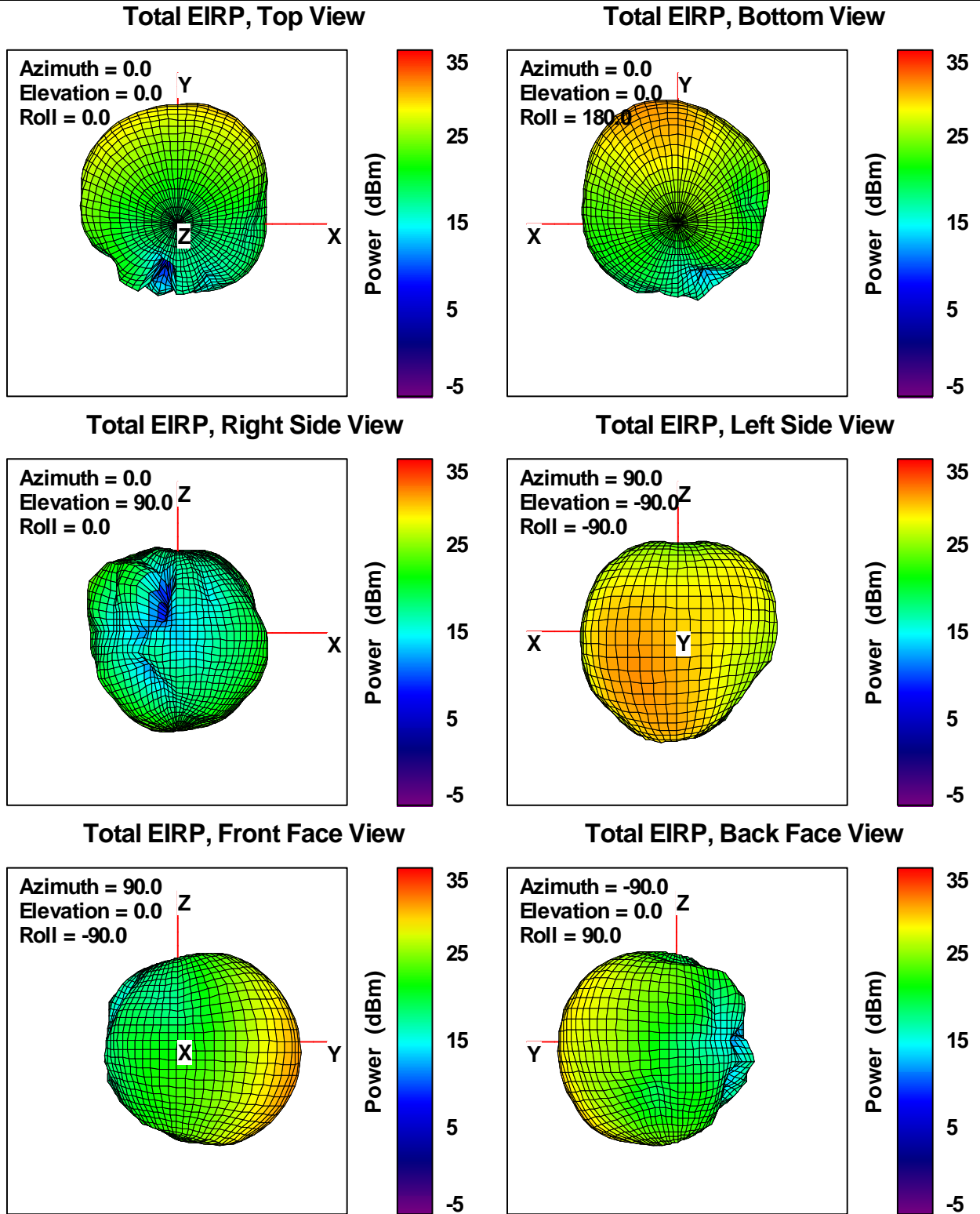
Plot 11. PCS 1900 Free-Space Total EIRP, 1880MHz



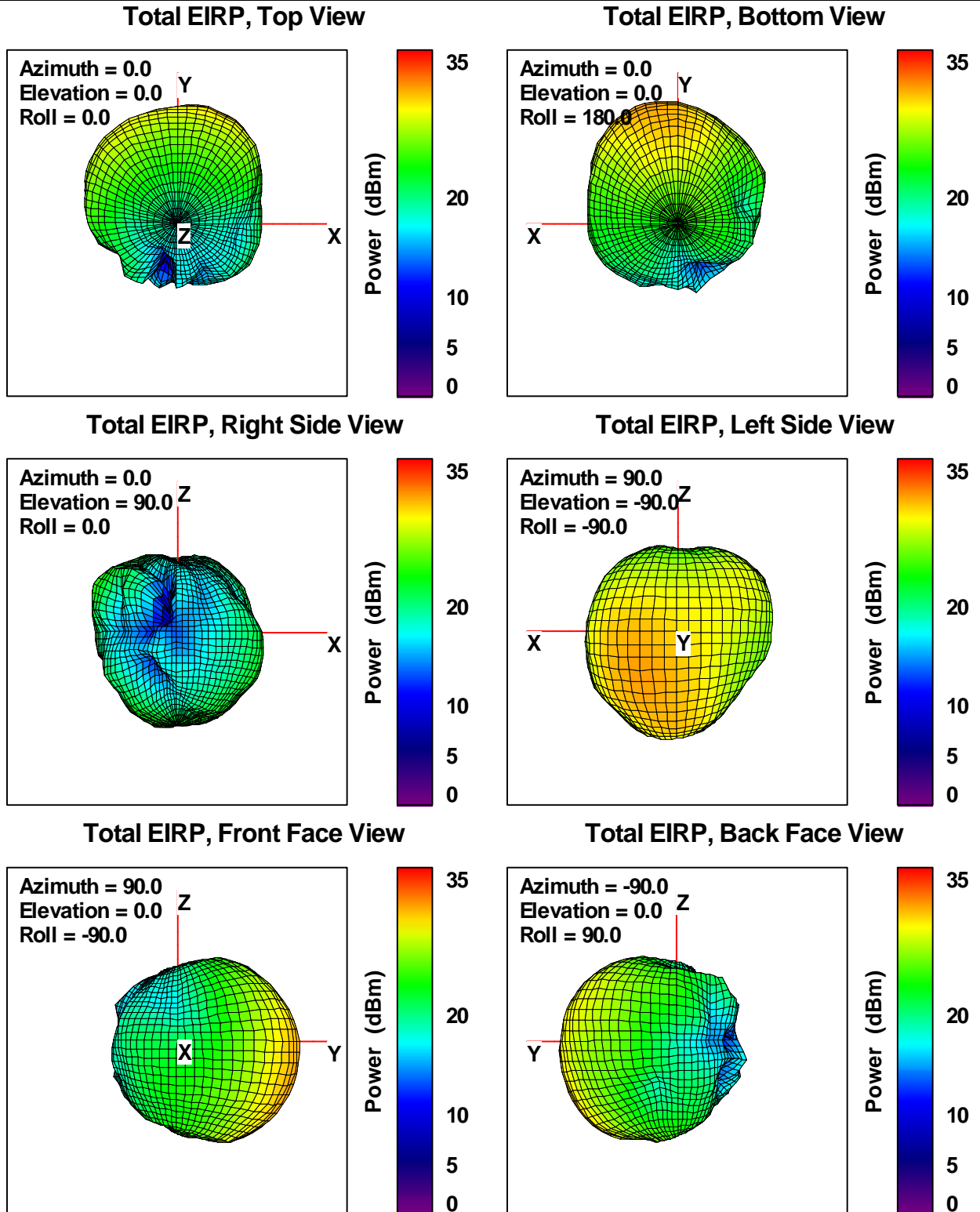
Plot 12. PCS 1900 Free-Space Total EIRP, 1909.8 MHz



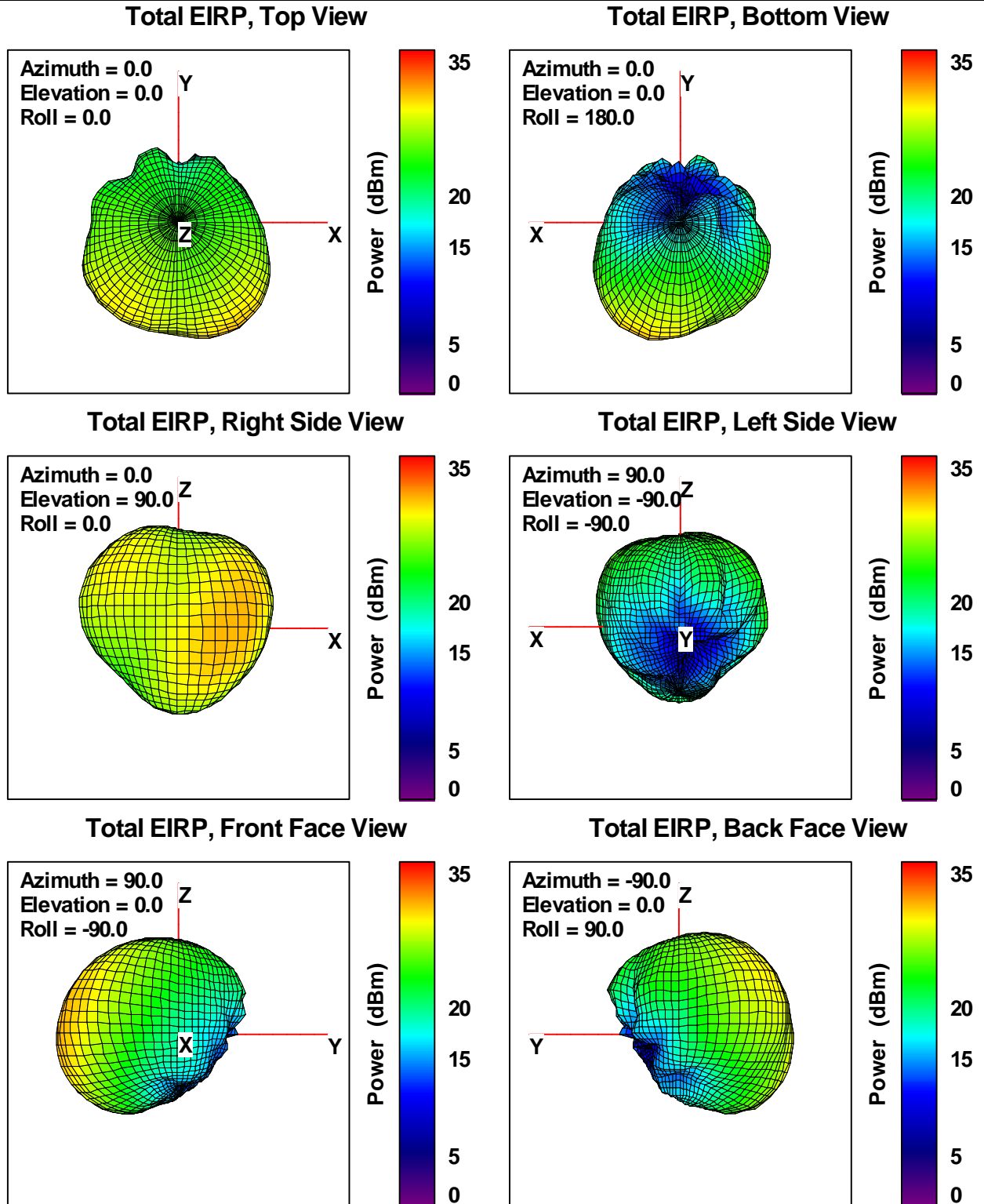
Plot 13. PCS 1900 SAM Phantom Head-Left Ear Total EIRP, 1850.2 MHz



Plot 14. PCS 1900 SAM Phantom Head-Left Ear Total EIRP, 1880MHz

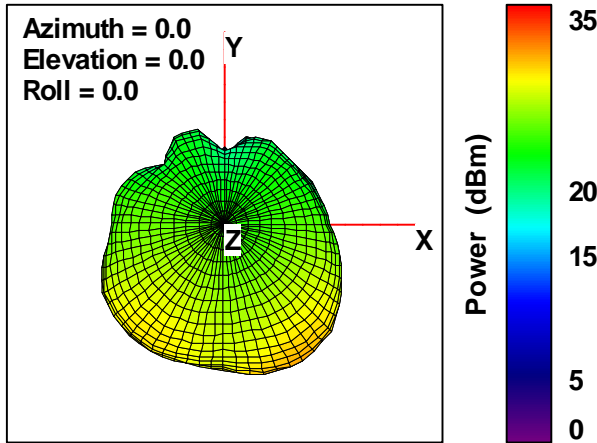


Plot 15. PCS 1900 SAM Phantom Head-Left Ear Total EIRP, 1909.8 MHz

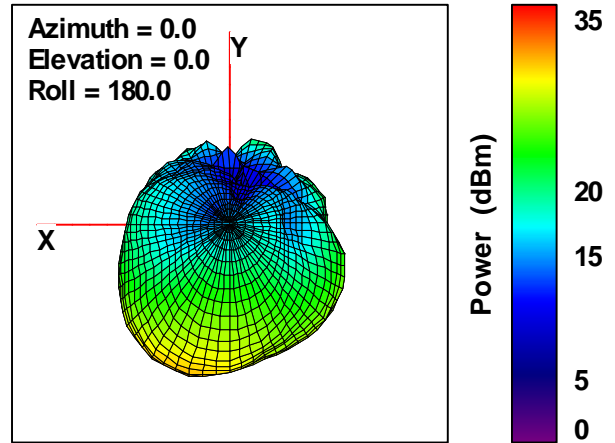


Plot 16. PCS 1900 SAM Phantom Head-Right Ear Total EIRP, 1850.2 MHz

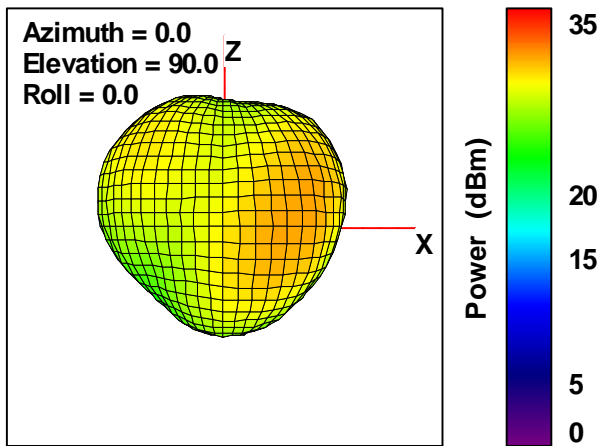
Total EIRP, Top View



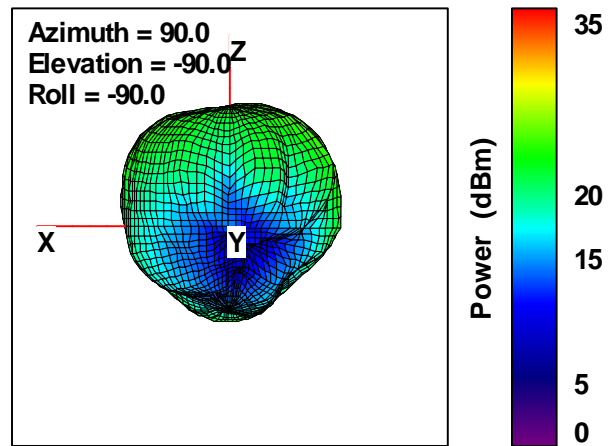
Total EIRP, Bottom View



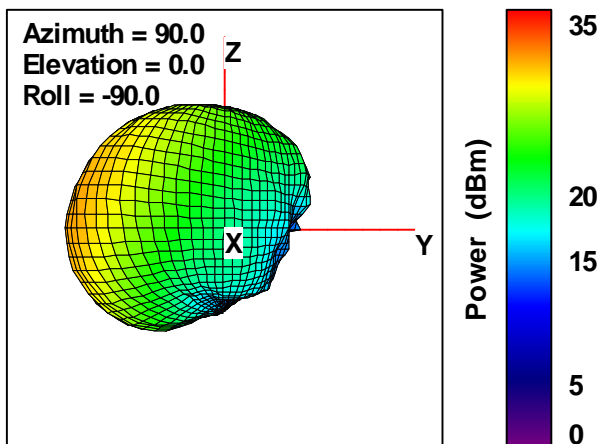
Total EIRP, Right Side View



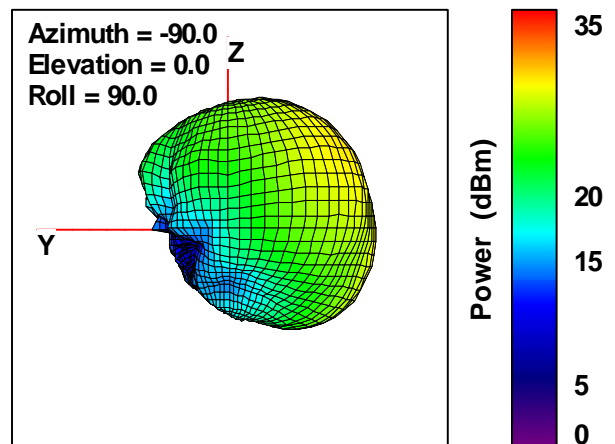
Total EIRP, Left Side View



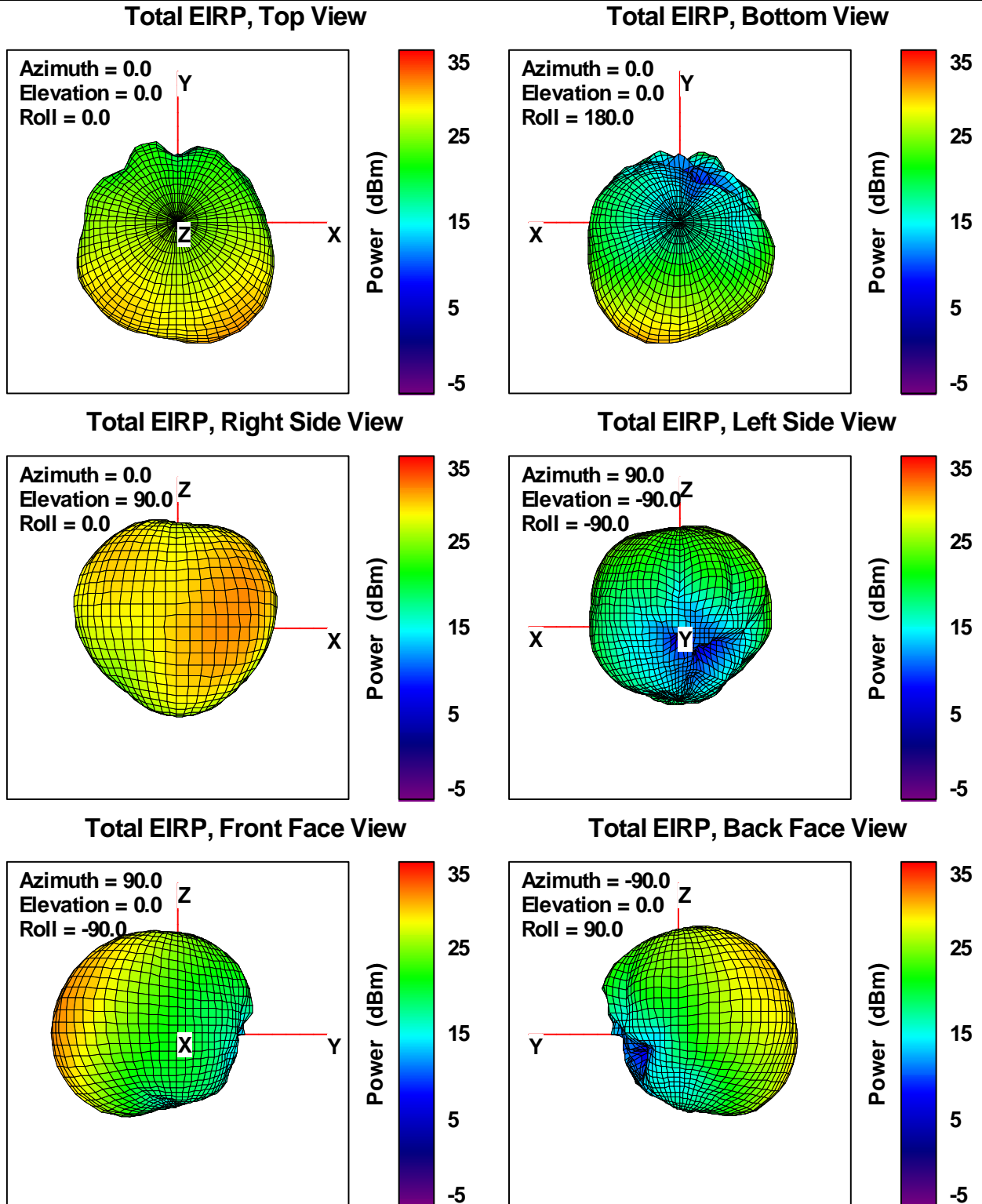
Total EIRP, Front Face View



Total EIRP, Back Face View



Plot 17. PCS 1900 SAM Phantom Head-Right Ear Total EIRP, 1880MHz



Plot 18. PCS 1900 SAM Phantom Head-Right Ear Total EIRP, 1909.8 MHz

A.3 PHOTOGRAPHS

Photo 1. TMC Wireless Test Laboratory



Photo 2. TMC Wireless Test Equipment



Photo 3. EMQuest Software In Operation



Photo 4. View of Dual Polarized Horn in Apex of Tapered Chamber

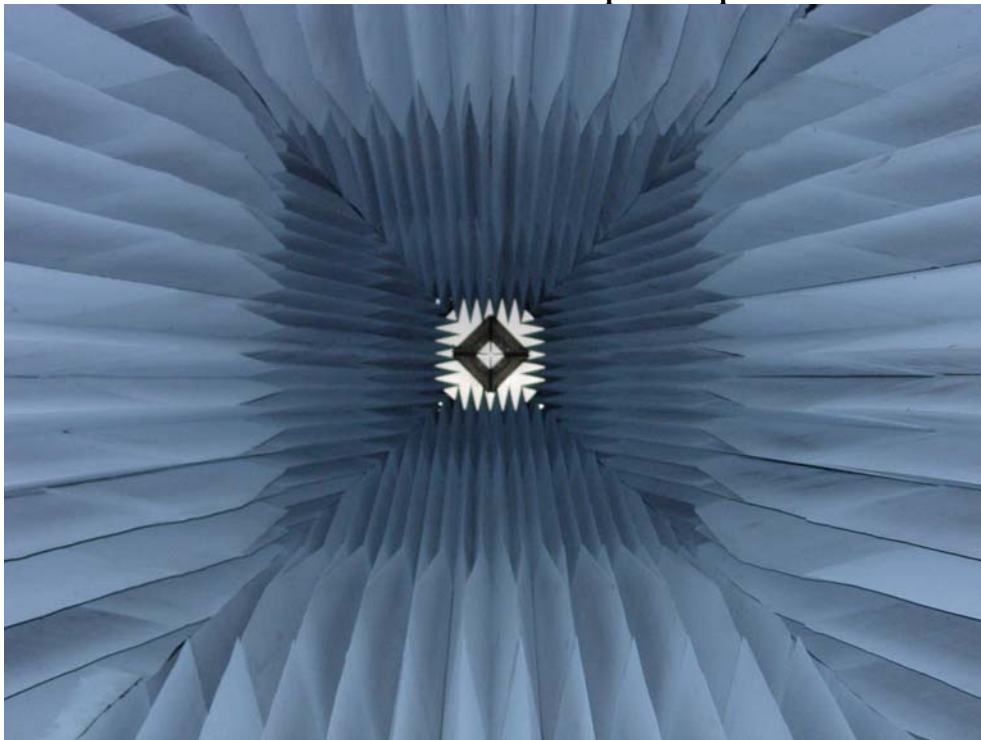


Photo 5. Typical Free-Space Phone Mounting of Customer Phone

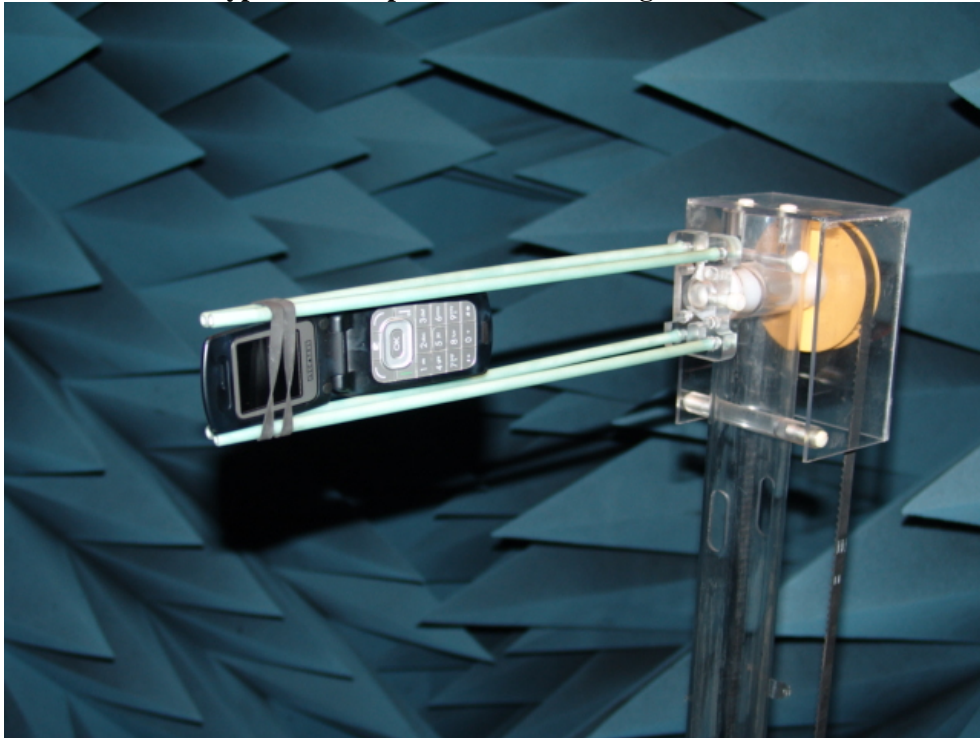


Photo 6. Typical SAM Phantom Head Phone Mounting of Customer Phone

