

SAR TEST REPORT

Equipment Under Test : GSM 850&PCS1900MHz MOBILE PHONE
Model No. : BD02A
Market name: ELLE N°2 Coleccion 2007
FCC ID: RAD042
Applicant : T&A Mobile Phones
Address of Applicant : 3/F,B2 Block, Digital Technology Yard,
Gaoxin Nan Qi Road,Nan Shan District,
Shenzhen, Guangdong, P.R. China
Date of Receipt : 2006.05.08
Date of Test : 2006.05.31 – 2006.06.04
Date of Issue : 2006.06.23

Standards:

**FCC OET Bulletin 65 supplement C,
ANSI/IEEE C95.1, C95.3, IEEE 1528-2003**

In the configuration tested, the EUT complied with the standards specified above.

Remarks:

This report details the results of the testing carried out on one sample, the results contained in this test report do not relate to other samples of the same product. The manufacturer should ensure that all products in series production are in conformity with the product sample detailed in this report.

This report may only be reproduced and distributed in full. If the product in this report is used in any configuration other than that detailed in the report, the manufacturer must ensure the new system complies with all relevant standards. Any mention of SGS-CSTC Shanghai GSM Lab or testing done by SGS-CSTC Shanghai GSM Lab must approve SGS Shanghai GSM Lab in connection with distribution or use of the product described in this report in writing.

Tested by :

Will Ni

Date :

2006.06.23

Approved by :



Date :

2006.06.05

Contents

1. General Information.....	5
1.1 Test Laboratory.....	5
1.2 Details of Applicant	5
1.3 Description of EUT(s).....	5
1.4 Test Environment	6
1.5 Operation Configuration	6
1.6 The SAR Measurement System.....	6
1.7 SAR System Verification.....	8
1.8 Tissue Simulant Fluid for the Frequency Band 850MHz and 1900MHZ	9
1.9 Test Standards and Limits	10
2. Summary of Results	11
3. Instruments List	13
4. Measurements	14
4.1 LeftHandSide-Cheek-GSM850-Low	14
LeftHandSide-Cheek-GSM850-low	14
4.2 LeftHandSide-Cheek-GSM850-Middle.....	15
LeftHandSide-Cheek-GSM850-mid	16
4.3 LeftHandSide-Cheek-GSM850-High	17
LeftHandSide-Cheek-GSM850-high	17
4.4 LeftHandSide-Tilt-GSM850-Low	19
LeftHandSide-Tilt-GSM850-low.....	19
4.5 LeftHandSide-Tilt-GSM850-Middle	21
LeftHandSide-Tilt-GSM850-mid	21
4.6 LeftHandSide-Tilt-GSM850-High.....	23
LeftHandSide-Tilt-GSM850-high.....	23
4.7 RightHandSide-Cheek-GSM850-Low	25
RightHandSide-Cheek-GSM850-low	25
4.8 RightHandSide-Cheek-GSM850-Middle	27
RightHandSide-Cheek-GSM850-mid.....	27
4.9 RightHandSide-Cheek-GSM850-High	29

RightHandSide-Cheek-GSM850-high	29
4.10 RightHandSide-Tilt-GSM850-Low	31
RightHandSide-Tilt-GSM850-low.....	31
4.11 RightHandSide-Tilt-GSM850-Middle.....	33
RightHandSide-Tilt-GSM850-mid	33
4.12 RightHandSide-Tilt-GSM850-High.....	35
RightHandSide-Tilt-GSM850-high	35
4.13 Body-Worn-GSM850-Low.....	37
BodyWorn-GSM850-low	37
4.14 Body-Worn-GSM850-Middle	39
BodyWorn-GSM850-mid.....	39
4.15 Body-Worn-GSM850-High.....	41
BodyWorn-GSM850-high	41
4.16 LeftHandSide-Cheek-PCS1900-Low.....	43
LeftHandSide-Cheek-PCS1900-low.....	43
4.17 LeftHandSide-Cheek-PCS1900-Middle.....	45
LeftHandSide-Cheek-PCS1900-mid.....	45
4.18 LeftHandSide-Cheek-PCS1900-High.....	47
LeftHandSide-Cheek-PCS1900-high.....	47
4.19 LeftHandSide-Tilt-PCS1900-Low	49
LeftHandSide-Tilt-PCS1900-low	49
4.20 LeftHandSide-Tilt-PCS1900-Middle	51
LeftHandSide-Tilt-PCS1900-mid.....	51
4.21 LeftHandSide-Tilt-PCS1900-High	53
LeftHandSide-Tilt-PCS1900-high	53
4.22 RightHandSide-Cheek-PCS1900-Low	55
RightHandSide-Cheek-PCS1900-low.....	55
4.23 RightHandSide-Cheek-PCS1900-Middle.....	57
RightHandSide-Cheek-PCS1900-mid	57
4.24 RightHandSide-Cheek-PCS1900-High	59
RightHandSide-Cheek-PCS1900-high.....	59
4.25 RightHandSide-Tilt-PCS1900-Low.....	61
RightHandSide-Tilt-PCS1900-low	61
4.26 RightHandSide-Tilt-PCS1900-Middle	63
RightHandSide-Tilt-PCS1900-mid.....	63

4.27 RightHandSide-Tilt-PCS1900-High.....	65
RightHandSide-Tilt-PCS1900-high	65
4.28 Body-Worn-PCS1900-Low	67
BodyWorn-PCS1900-low.....	67
4.29 Body-Worn-PCS1900-Middle	69
BodyWorn-PCS1900-mid.....	69
4.30 Body-Worn-PCS1900-High.....	71
BodyWorn-PCS1900-high.....	71
Appendix	74
1. Photographs of Test Setup.....	74
2. Photographs of the EUT	77
3. Photographs of the battery.....	77
4. Photograph of the charger	78
5. Probe Calibration certificate.....	79
6. Uncertainty analysis	88
7. Phantom description	89
8. System validation from original equipment supplier	90

1. General Information

1.1 Test Laboratory

GSM Lab
 SGS-CSTC Standards Technical Services Co.Ltd Shanghai Branch
 9F,the 3rd Building, No.889, Yishan Rd, Xuhui District, Shanghai, China
 Zip code: 200233
 Telephone: +86 (0) 21 6495 1616
 Fax: +86 (0) 21 6495 3679
 Internet: <http://www.cn.sgs.com>

1.2 Details of Applicant

Name: T&A Mobile Phones
 Address: 3/F,B2 Block, Digital Technology Yard,
 Gaoxin Nan Qi Road,Nan Shan District,
 Shenzhen, Guangdong, P.R. China

1.3 Description of EUT(s)

Brand name	ALCATEL	
Model No.	BD02A	
Market Name	ELLE N°2 Coleccion 2007	
Serial No.	IMEI: 01094500000050-9	
HW Version	PIO	
SW Version	V010	
Battery Type	4.2V, Lithium-Ion	
Antenna Type	Inner Antenna	
Operation Mode	GSM850/PCS1900	
Modulation Mode	GMSK	
Frequency range	GSM850	Tx: 824~849 MHz
		Rx: 869~894 MHz
	PCS1900	Tx: 1850~1910 MHz
		Rx: 1930~1990 MHz
Maximum RF Conducted Power	GSM850: 33dBm, PCS1900: 30dBm	

1.4 Test Environment

Ambient temperature: 22.0° C

Tissue Simulating Liquid: 22° C

Relative Humidity: 29%

1.5 Operation Configuration

Configuration 1: GSM 850, LeftHandSide Cheek & 15° Tilt Position

Configuration 2: GSM 850, RightHandSide Cheek & 15° Tilt Position

Configuration 3: GSM 850, BodyWorn (1.5cm between EUT and phantom)

Configuration 4: PCS 1900, LeftHandSide Cheek & 15° Tilt Position

Configuration 5: PCS 1900, RightHandSide Cheek & 15° Tilt Position

Configuration 6: PCS 1900, BodyWorn (1.5cm between EUT and phantom)

1.6 The SAR Measurement System

A photograph of the SAR measurement System is given in Fig.a.

This SAR Measurement System uses a Computer-controlled 3-D stepper motor system (Speag Dasy 4 professional system). A Model ES3DV3 3088 E-field probe is used to determine the internal electric fields. The SAR can be obtained from the equation $SAR = \sigma (|E_i|^2) / \rho$ where σ and ρ are the conductivity and mass density of the tissue-simulant.

The DASY4 system for performing compliance tests consists of the following items:

- ÿ A standard high precision 6-axis robot (Stabile RX family) with controller, teach pendant and software. An arm extension for accommodation the data acquisition electronics (DAE).
- ÿ A dosimetric probe, i.e., an isotropic E-field probe optimized and calibrated for usage in tissue simulating liquid. The probe is equipped with an optical surface detector system.
- ÿ A data acquisition electronics (DAE) which performs the signal amplification, signal multiplexing, AD-conversion, offset measurements, mechanical surface detection, collision detection, etc. The unit is battery powered with standard or rechargeable batteries. The signal is optically transmitted to the EOC.

- Y The Electro-optical converter (EOC) performs the conversion between optical and electrical of the signals for the digital communication to DAE and for the analog signal from the optical surface detection. The EOC is connected to the measurement server.

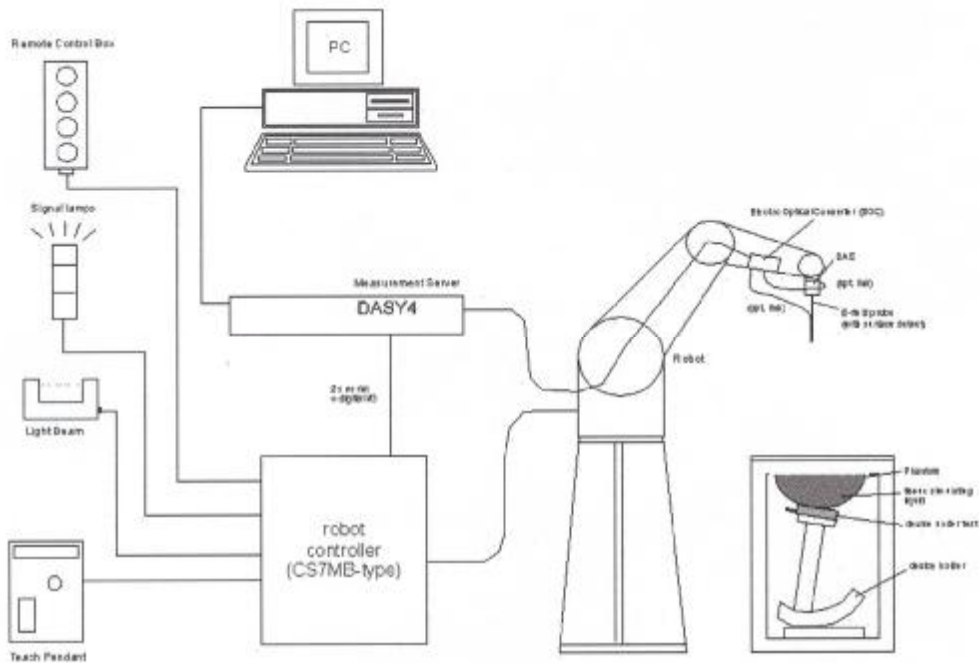


Fig. a SAR System Configuration

- Y The function of the measurement server is to perform the time critical tasks such as signal filtering, control of the robot operation and fast movement interrupts.
- Y A probe alignment unit which improves the (absolute) accuracy of the probe positioning.
- Y A computer operating Windows 2000.
- Y DASY4 software.
- Y Remote control with teach pendant and additional circuitry for robot safety such as warning lamps, etc.
- Y The SAM twin phantom enabling testing left-hand, right-hand and body-worn usage.
- Y The device holder for handheld mobile phones.
- Y Tissue simulating liquid mixed according to the given recipes.

γ Validation dipole kits allowing validating the proper functioning of the system.

1.7 SAR System Verification

The microwave circuit arrangement for system verification is sketched in Fig. b. The daily system accuracy verification occurs within the flat section of the SAM phantom. A SAR measurement was performed to see if the measured SAR was within +/- 10% from the target SAR values. These tests were done at 900MHz and 1900MHz. The tests were conducted on the same days as the measurement of the DUT. The obtained results from the system accuracy verification are displayed in the table 1 (SAR values are normalized to 1W forward power delivered to the dipole). During the tests, the ambient temperature of the laboratory was in the range 22°C, the relative humidity was in the range 60% and the liquid depth above the ear reference points was above 15 cm in all the cases. It is seen that the system is operating within its specification, as the results are within acceptable tolerance of the reference values.

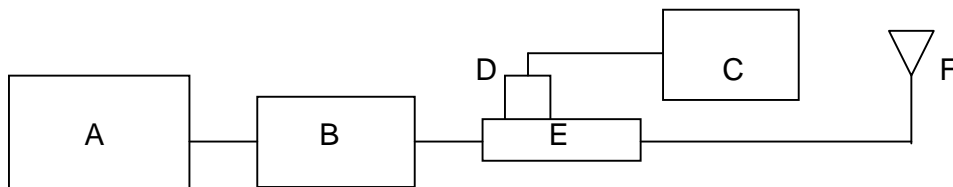


Fig. b the microwave circuit arrangement used for SAR system verification

- A. Agilent Model E4438C Signal Generator
- B. Mini-Circuit Model ZHL-42 Preamplifier
- C. Agilent Model E4416A Power Meter
- D. Agilent Model 8481H Power Sensor
- E. HT CP6100 20N Dual directional coupler
- F. Reference dipole antenna

Validation Kit	Frequency MHz	Target SAR 1g (250mW)	Target SAR 10g (250mW)	Measured SAR 1g	Measured SAR 10g	Measured Date
ES3DV3 SN3088	850 Head	2.6	1.67	2.53	1.57	2006-06-03
ES3DV3 SN3088	850 Body	2.69	1.74	2.55	1.63	2006-05-31
ES3DV3 SN3088	1900 Head	9.89	5.16	9.98	5.23	2006-05-31
ES3DV3 SN3088	1900 Body	9.81	5.22	9.66	5.17	2006-06-04

Table1. Result System Validation

1.8 Tissue Simulant Fluid for the Frequency Band 850MHz and 1900MHZ

The dielectric properties for this body-simulant fluid were measured by using the HP Model 85070D Dielectric Probe (rates frequency band 200 MHz to 20 GHz) in conjunction with Agilent E5071B Network Analyzer (300 KHz-8500 MHz). The Conductivity (σ) and Permittivity (ρ) are listed in Table 2. For the SAR measurement given in this report. The temperature variation of the Tissue Simulant Fluid was 22°C.

Frequency (MHz)	Tissue Type	Limit/Measured	Permittivity (ρ)	Conductivity (σ)	Simulated Tissue Temp (°C)
850	Head	Measured, 2006-06-03	41.67	0.877	22.5
		Recommended Limit	41.5±5%	0.97±5%	20-24
	Body	Measured, 2006-05-31	52.55	0.996	22.5
		Recommended Limit	55.0±5%	1.05±5%	20-24
1900	Head	Measured, 2006-05-31	39.43	1.434	22.3
		Recommended Limit	40.0±5%	1.40±5%	20-24
	Body	Measured, 2006-06-04	55.85	1.534	22.6
		Recommended Limit	53.3±5%	1.52±5%	20-24

Table 2. Dielectric parameters for the Frequency Band 850MHz&1900MHZ

1.9 Test Standards and Limits

According to FCC 47 CFR §2.1093(d) the limits to be used for evaluation are based generally on criteria published by the American National Standards Institute (ANSI) for localized specific absorption rate (SAR) in Section 4.2 of "IEEE Standard for Safety Levels with Respect to Human Exposure to Radio Frequency Electromagnetic Fields, 3KHz to 300GHz," ANSI/IEEE C95.1-1992, Copyright 1992 by the Institute of Electrical & Electronics Engineers, Inc., New York, New York 10071.

Human Exposure	Uncontrolled Environment General Population
Spatial Peak SAR (Brain)	1.60 mW/g (averaged over a mass of 1g)

Table3. RF Exposure Limits

Notes:

1. Uncontrolled environments are defined as locations where there is potential exposure of individuals who have no knowledge or control of their potential exposure.

2. Summary of Results

Frequency Band(MHz)	EUT position	Conducted Output Power (dBm)	1g Avg. (mW/g)	Power Drift	Amb. Temp (°C)	Verdict
850	LeftHandSide Cheek, Low Channel	32.1	1.05	-0.092	22	PASS
	LeftHandSide Cheek, Mid Channel	32.0	1.04	-0.035	22	PASS
	LeftHandSide Cheek, High Channel	31.9	0.685	-0.010	22	PASS
	LeftHandSide Tilt, Low Channel	32.1	0.324	-0.024	22	PASS
	LeftHandSide Tilt, Mid Channel	32.0	0.249	0.009	22	PASS
	LeftHandSide Tilt, High Channel	31.9	0.152	0.015	22	PASS
	RightHandSide Cheek, Low Channel	32.1	1.02	0.121	22	PASS
	RightHandSide Cheek, Mid Channel	32.0	0.973	-0.021	22	PASS
	RightHandSide Cheek, High Channel	31.9	0.625	0.024	22	PASS
	RightHandSide Tilt, Low Channel	32.1	0.305	-0.018	22	PASS
	RightHandSide Tilt, Mid Channel	32.0	0.269	0.022	22	PASS
	RightHandSide Tilt, High Channel	31.9	0.160	0.043	22	PASS
	BodyWorn, Low Channel	32.1	0.501	0.003	22	PASS
	BodyWorn, Mid Channel	32.0	0.317	0.114	22	PASS
	BodyWorn, High Channel	31.9	0.146	-0.125	22	PASS
1900	LeftHandSide Cheek, Low Channel	29.4	0.169	-0.182	22	PASS
	LeftHandSide Cheek, Mid Channel	29.1	0.150	-0.044	22	PASS
	LeftHandSide Cheek, High Channel	28.9	0.247	0.044	22	PASS
	LeftHandSide Tilt, Low Channel	29.4	0.057	0.004	22	PASS
	LeftHandSide Tilt, Mid Channel	29.1	0.076	-0.159	22	PASS
	LeftHandSide Tilt, High Channel	28.9	0.138	-0.310	22	PASS
	RightHandSide Cheek, Low Channel	29.4	0.180	-0.117	22	PASS

	RightHandSide Cheek, Mid Channel	29.1	0.187	-0.110	22	PASS
	RightHandSide Cheek, High Channel	28.9	0.275	-0.090	22	PASS
	RightHandSide Tilt, Low Channel	29.4	0.074	0.011	22	PASS
	RightHandSide Tilt, Mid Channel	29.1	0.117	-0.052	22	PASS
	RightHandSide Tilt, High Channel	28.9	0.143	-0.020	22	PASS
	BodyWorn, Low Channel	29.4	0.410	0.115	22	PASS
	BodyWorn, Mid Channel	29.1	0.382	-0.062	22	PASS
	BodyWorn, High Channel	28.9	0.326	-0.134	22	PASS

Maximum Values

Frequency Band(MHz)	EUT position	Conducted Output Power (dBm)	1g Average (W/Kg)	Power Drift (dB)	Amb. Temp (°C)	Verdict
850	LeftHandSide Cheek, Low Channel	32.1	1.05	-0.092	22	PASS
	BodyWorn, Low Channel	32.1	0.501	0.003	22	PASS
1900	RightHandSide Cheek, High Channel	28.9	0.275	-0.090	22	PASS
	BodyWorn, Low Channel	29.4	0.410	0.115	22	PASS

Note:

1. In GSM850 band, the low, middle and high channels are CH128/824.2MHz, CH189/836.4MHz and CH251/848.8MHz separately.
2. In PCS1900 band, the low, middle and high channels are CH512/1805.2MHz, CH661/1880.0MHz and CH810/1909.8MHz separately.
3. For the Bodyworn measurements the sample was only placed with the antenna toward the phantom since this position delivers the highest SAR values.
4. For the Bodyworn measurements, the distance from the sample to the phantom is 1.5 cm.

3. Instruments List

Instrument	Model	Serial number	NO.	Date of last Calibration
Desktop PC	COMPAQ EVO	N/A	GSM-SAR-025	N/A
Dasy 4 software	V 4.6 build 23	N/A	GSM-SAR-001	N/A
Probe	ES3DV3	3088	GSM-SAR-034	2005.09.13
DAE	DAE3	569	GSM-SAR-023	2005.11.17
Phantom	SAM 12	TP-1283	GSM-SAR-005	N/A
Robot	RX90L	F03/5V32A1/A01	GSM-SAR-008	N/A
900MHz system validation dipole	D900V2	184	GSM-SAR-013	2005.8.22
1900MHz system validation dipole	D1900V2	5d028	GSM-SAR-020	2005.8.25
Dielectric probe kit	85070D	US01440168	GSM-SAR-016	2005.12.19
Agilent network analyzer	E5071B	MY42100549	GSM-SAR-007	2005.12.19
Agilent signal generator	E4438	14438CATO-19719	GSM-SAR-008	2005.12.19
Mini-Circuits preamplifier	ZHL-42	D041905	GSM-SAR-033	2006.05.15
Agilent power meter	E4416A	GB41292095	GSM-SAR-010	2005.12.19
Agilent power sensor	8481H	MY41091234	GSM-SAR-011	2005.12.19
HT CP6100 20N Coupling	6100	SCP301480120	GSM-SAR-012	2005.12.19
R&S Universal radio communication tester	CMU200	103633	GSM-AUD-002	2005.12.20

4. Measurements

4.1 LeftHandSide-Cheek-GSM850-Low

Date/Time: 2006-6-2 8:14:11

Test Laboratory: SGS-GSM

LeftHandSide-Cheek-GSM850-low

DUT: GSM10000066; Type: GSM Dual-Band Mobile Phone; Serial: 010945000000509

Communication System: GSM850-GSM Mode; Frequency: 824.2 MHz; Duty Cycle: 1:8.3

Medium: HSL850 Medium parameters used (interpolated): $f = 824.2$ MHz; $\sigma = 0.866$ mho/m; $\epsilon_r = 41.8$;
 $\rho = 1000$ kg/m³

Phantom section: Left Section

Measurement Standard: DASY4 (High Precision Assessment)

DASY4 Configuration:

- Probe: ES3DV3 - SN3088; ConvF(5.91, 5.91, 5.91); Calibrated: 2005-9-13
- Sensor-Surface: 4mm (Mechanical Surface Detection)
- Electronics: DAE3 Sn569; Calibrated: 2005-11-17
- Phantom: SAM 12; Type: SAM V4.0; Serial: TP-1283
- Measurement SW: DASY4, V4.6 Build 23; Postprocessing SW: SEMCAD, V1.8 Build 160

GSM 850 Left Cheek L/Area Scan (51x111x1): Measurement grid: dx=15mm, dy=15mm

[Info: Interpolated medium parameters used for SAR evaluation.](#)

Maximum value of SAR (interpolated) = 1.09 mW/g

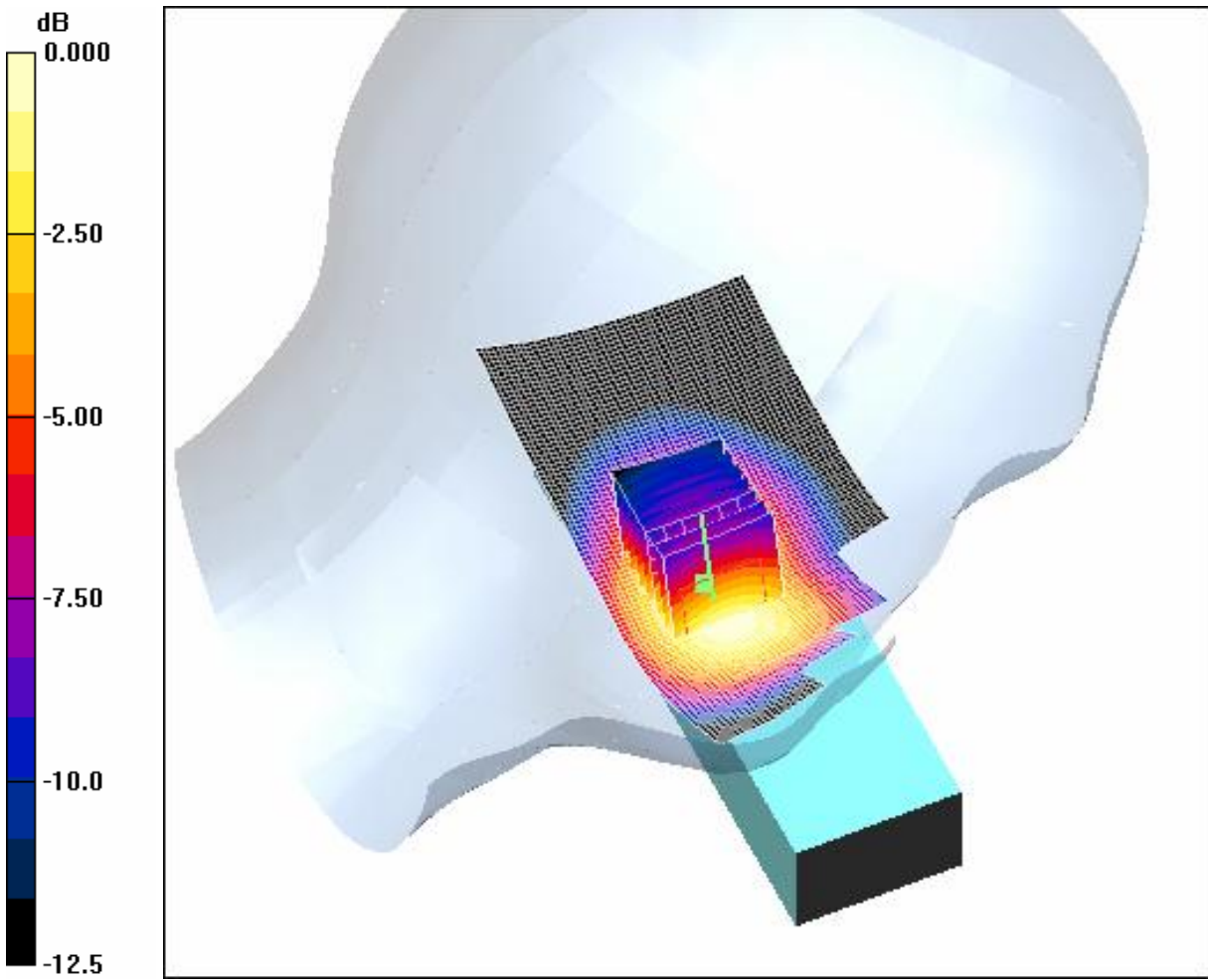
GSM 850 Left Cheek L/Zoom Scan (7x7x7)/Cube 0: Measurement grid: dx=5mm, dy=5mm,
dz=5mm

Reference Value = 8.18 V/m; Power Drift = -0.092 dB

Peak SAR (extrapolated) = 1.63 W/kg
SAR(1 g) = 1.05 mW/g; SAR(10 g) = 0.674 mW/g

Info: Interpolated medium parameters used for SAR evaluation.

Maximum value of SAR (measured) = 1.14 mW/g



0 dB = 1.14mW/g

4.2 LeftHandSide-Cheek-GSM850-Middle

Date/Time: 2006-6-2 8:34:51

Test Laboratory: SGS-GSM

LeftHandSide-Cheek-GSM850-mid

DUT: GSM10000066; Type: GSM Dual-Band Mobile Phone; Serial: 01094500000509

Communication System: GSM850-GSM Mode; Frequency: 836.4 MHz; Duty Cycle: 1:8.3

Medium: HSL850 Medium parameters used (interpolated): $f = 836.4$ MHz; $\sigma = 0.878$ mho/m; $\epsilon_r = 41.7$;
 $\rho = 1000$ kg/m³

Phantom section: Left Section

Measurement Standard: DASY4 (High Precision Assessment)

DASY4 Configuration:

- Probe: ES3DV3 - SN3088; ConvF(5.91, 5.91, 5.91); Calibrated: 2005-9-13
- Sensor-Surface: 4mm (Mechanical Surface Detection)
- Electronics: DAE3 Sn569; Calibrated: 2005-11-17
- Phantom: SAM 12; Type: SAM V4.0; Serial: TP-1283
- Measurement SW: DASY4, V4.6 Build 23; Postprocessing SW: SEMCAD, V1.8 Build 160

GSM 850 Left Cheek M/Area Scan (51x111x1): Measurement grid: dx=15mm, dy=15mm

[Info: Interpolated medium parameters used for SAR evaluation.](#)

Maximum value of SAR (interpolated) = 1.08 mW/g

GSM 850 Left Cheek M/Zoom Scan (7x7x7)/Cube 0: Measurement grid: dx=5mm, dy=5mm,
dz=5mm

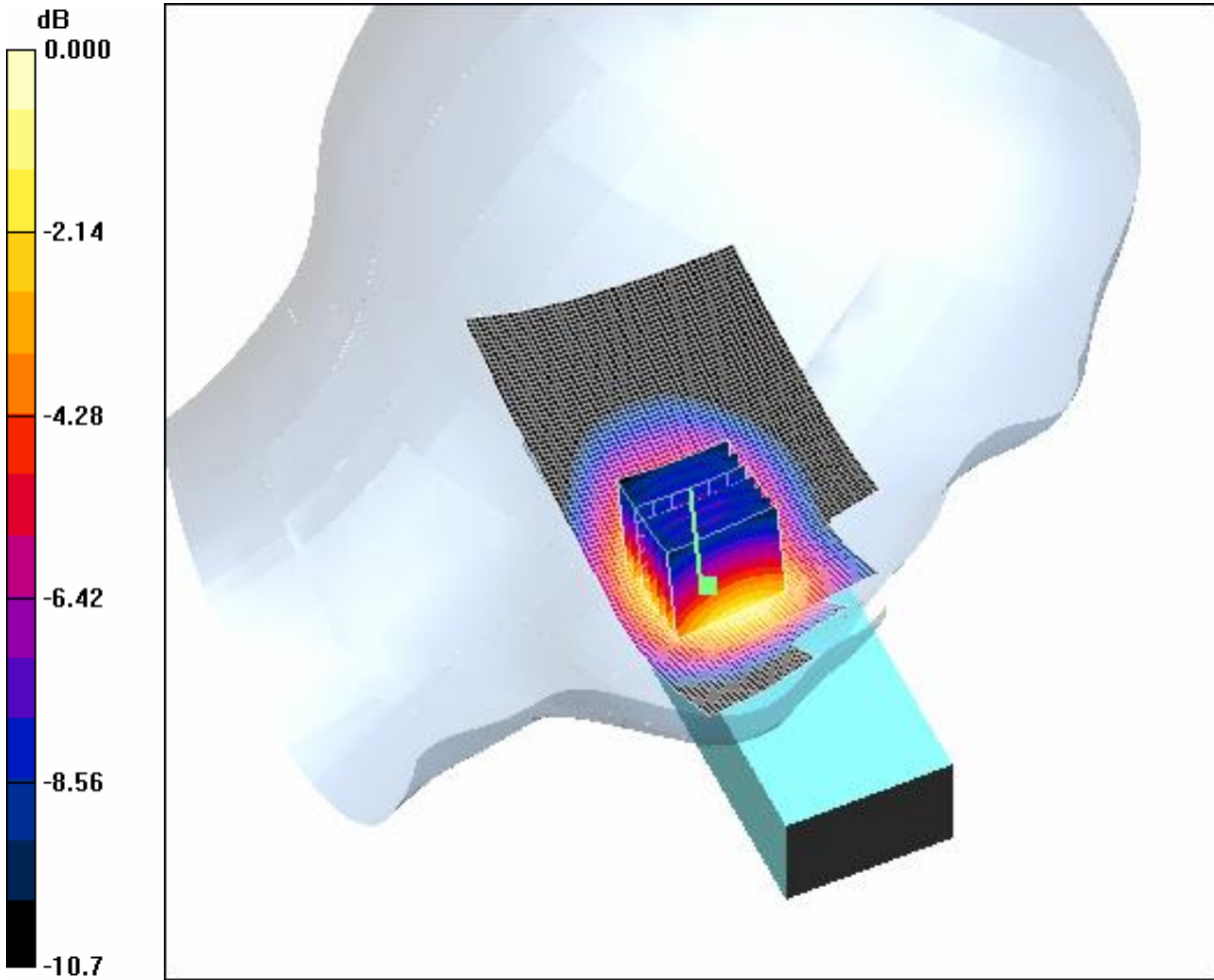
Reference Value = 8.13 V/m; Power Drift = -0.035 dB

Peak SAR (extrapolated) = 1.60 W/kg

SAR(1 g) = 1.04 mW/g; SAR(10 g) = 0.677 mW/g

[Info: Interpolated medium parameters used for SAR evaluation.](#)

Maximum value of SAR (measured) = 1.12 mW/g



0 dB = 1.12mW/g

4.3 LeftHandSide-Cheek-GSM850-High

Date/Time: 2006-6-2 8:56:07

Test Laboratory: SGS-GSM

LeftHandSide-Cheek-GSM850-high

DUT: GSM10000066; Type: GSM Dual-Band Mobile Phone; Serial: 010945000000509

Communication System: GSM850-GSM Mode; Frequency: 848.8 MHz; Duty Cycle: 1:8.3

Medium: HSL850 Medium parameters used: $f = 849$ MHz; $\sigma = 0.89$ mho/m; $\epsilon_r = 41.6$; $\rho = 1000$ kg/m³

Phantom section: Left Section

Measurement Standard: DASYS4 (High Precision Assessment)

DASY4 Configuration:

- Probe: ES3DV3 - SN3088; ConvF(5.91, 5.91, 5.91); Calibrated: 2005-9-13
- Sensor-Surface: 4mm (Mechanical Surface Detection)
- Electronics: DAE3 Sn569; Calibrated: 2005-11-17
- Phantom: SAM 12; Type: SAM V4.0; Serial: TP-1283
- Measurement SW: DASYS4, V4.6 Build 23; Postprocessing SW: SEMCAD, V1.8 Build 160

GSM 850 Left Cheek H/Area Scan (51x111x1): Measurement grid: dx=15mm, dy=15mm

Maximum value of SAR (interpolated) = 0.715 mW/g

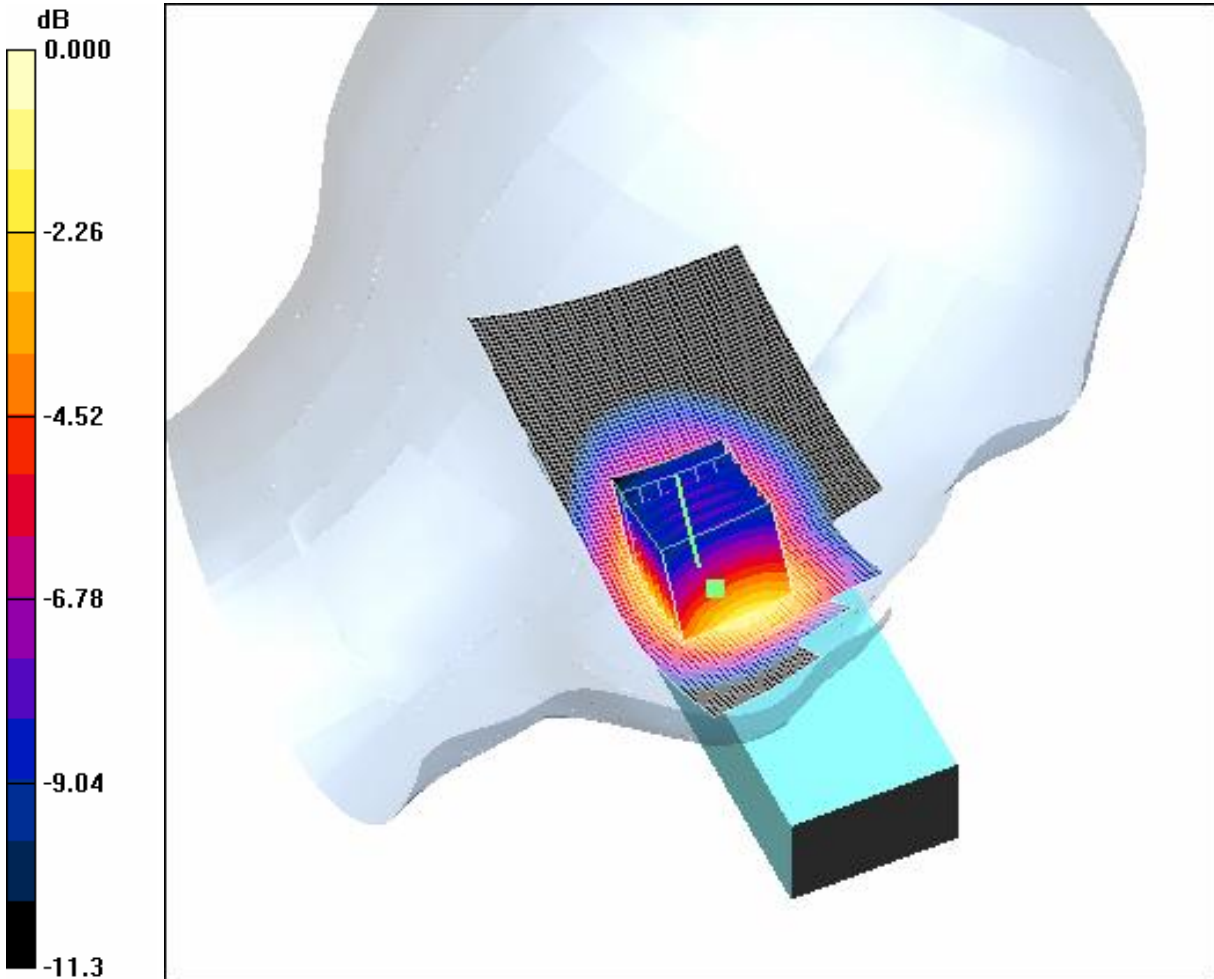
GSM 850 Left Cheek H/Zoom Scan (7x7x7)/Cube 0: Measurement grid: dx=5mm, dy=5mm, dz=5mm

Reference Value = 6.53 V/m; Power Drift = -0.010 dB

Peak SAR (extrapolated) = 1.05 W/kg

SAR(1 g) = 0.685 mW/g; SAR(10 g) = 0.447 mW/g

Maximum value of SAR (measured) = 0.747 mW/g



0 dB = 0.747mW/g

4.4 LeftHandSide-Tilt-GSM850-Low

Date/Time: 2006-6-3 20:28:07

Test Laboratory: SGS-GSM

LeftHandSide-Tilt-GSM850-low

DUT: GSM10000066; Type: GSM Dual-Band Mobile Phone; Serial: 01094500000509

Communication System: GSM850-GSM Mode; Frequency: 824.2 MHz; Duty Cycle: 1:8.3

Medium: HSL850 Medium parameters used (interpolated): $f = 824.2$ MHz; $\sigma = 0.866$ mho/m; $\epsilon_r = 41.8$;
 $\rho = 1000$ kg/m³

Phantom section: Left Section

Measurement Standard: DASY4 (High Precision Assessment)

DASY4 Configuration:

- Probe: ES3DV3 - SN3088; ConvF(5.91, 5.91, 5.91); Calibrated: 2005-9-13
- Sensor-Surface: 4mm (Mechanical Surface Detection)
- Electronics: DAE3 Sn569; Calibrated: 2005-11-17
- Phantom: SAM 12; Type: SAM V4.0; Serial: TP-1283
- Measurement SW: DASY4, V4.6 Build 23; Postprocessing SW: SEMCAD, V1.8 Build 160

GSM 850 Left Tilt L/Area Scan (51x111x1): Measurement grid: dx=15mm, dy=15mm

[Info: Interpolated medium parameters used for SAR evaluation.](#)

Maximum value of SAR (interpolated) = 0.348 mW/g

GSM 850 Left Tilt L/Zoom Scan (7x7x7)/Cube 0: Measurement grid: dx=5mm, dy=5mm, dz=5mm

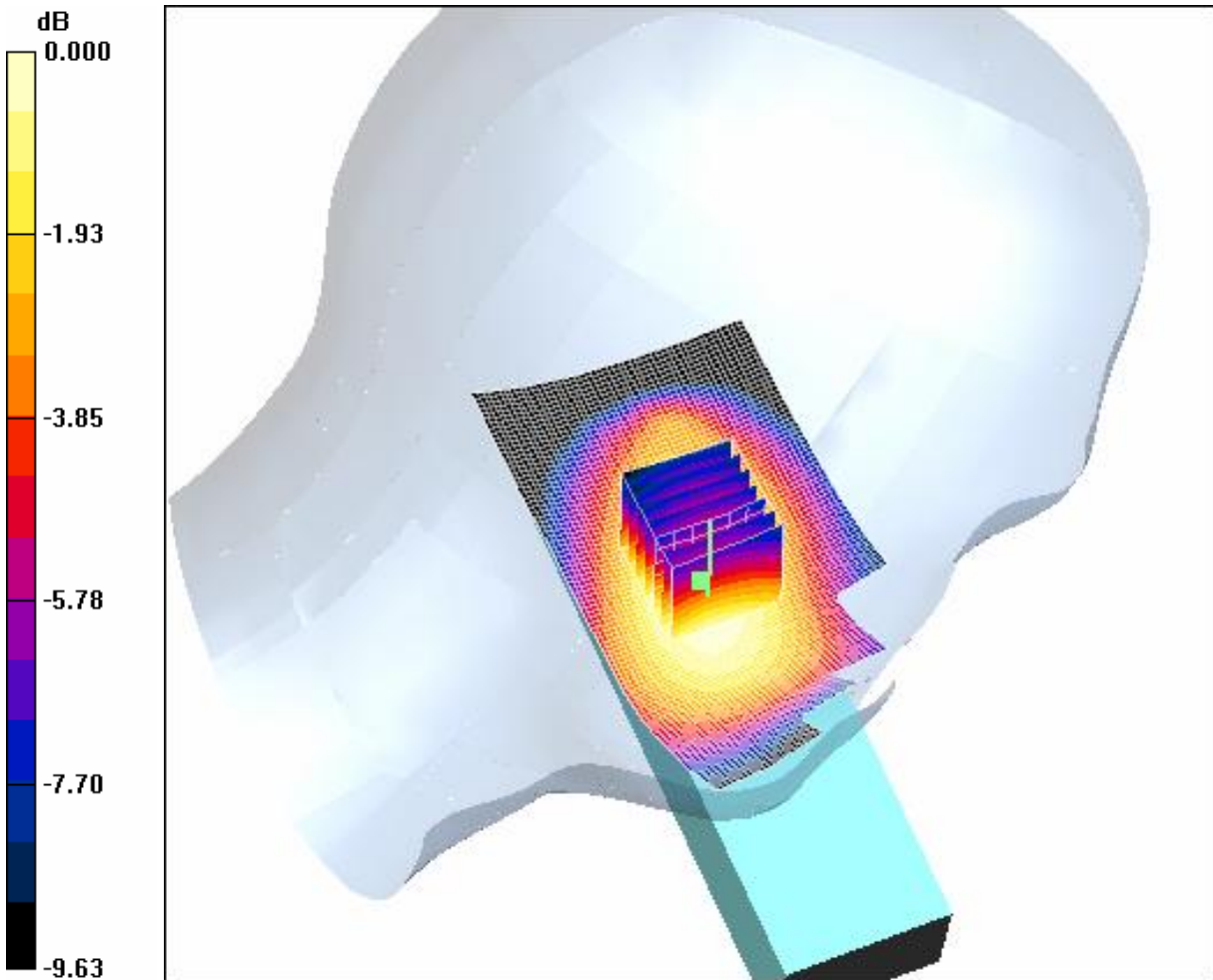
Reference Value = 13.3 V/m; Power Drift = -0.024 dB

Peak SAR (extrapolated) = 0.416 W/kg

SAR(1 g) = 0.324 mW/g; SAR(10 g) = 0.236 mW/g

[Info: Interpolated medium parameters used for SAR evaluation.](#)

Maximum value of SAR (measured) = 0.344 mW/g



0 dB = 0.344mW/g

4.5 LeftHandSide-Tilt-GSM850-Middle

Date/Time: 2006-6-3 19:45:27

Test Laboratory: SGS-GSM

LeftHandSide-Tilt-GSM850-mid

DUT: GSM10000066; Type: GSM Dual-Band Mobile Phone; Serial: 01094500000509

Communication System: GSM850-GSM Mode; Frequency: 836.4 MHz; Duty Cycle: 1:8.3

Medium: HSL850 Medium parameters used (interpolated): $f = 836.4$ MHz; $\sigma = 0.878$ mho/m; $\epsilon_r = 41.7$;
 $\rho = 1000$ kg/m³

Phantom section: Left Section

Measurement Standard: DASY4 (High Precision Assessment)

DASY4 Configuration:

- Probe: ES3DV3 - SN3088; ConvF(5.91, 5.91, 5.91); Calibrated: 2005-9-13
- Sensor-Surface: 4mm (Mechanical Surface Detection)
- Electronics: DAE3 Sn569; Calibrated: 2005-11-17
- Phantom: SAM 12; Type: SAM V4.0; Serial: TP-1283
- Measurement SW: DASY4, V4.6 Build 23; Postprocessing SW: SEMCAD, V1.8 Build 160

GSM 850 Left Tilt M/Area Scan (51x111x1): Measurement grid: dx=15mm, dy=15mm

[Info: Interpolated medium parameters used for SAR evaluation.](#)

Maximum value of SAR (interpolated) = 0.272 mW/g

GSM 850 Left Tilt M/Zoom Scan (7x7x7)/Cube 0: Measurement grid: dx=5mm, dy=5mm, dz=5mm

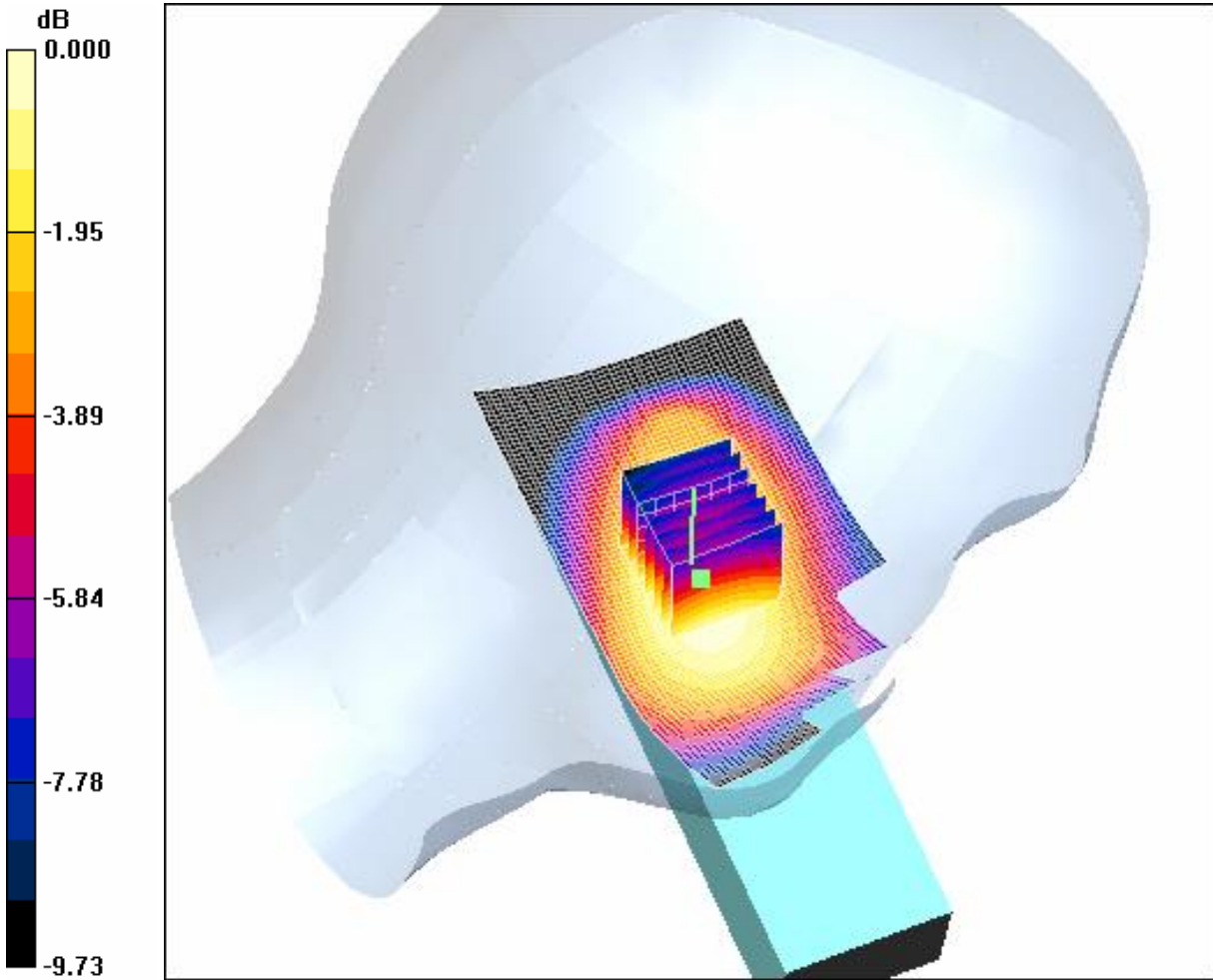
Reference Value = 12.1 V/m; Power Drift = 0.009 dB

Peak SAR (extrapolated) = 0.328 W/kg

SAR(1 g) = 0.249 mW/g; SAR(10 g) = 0.181 mW/g

[Info: Interpolated medium parameters used for SAR evaluation.](#)

Maximum value of SAR (measured) = 0.264 mW/g



0 dB = 0.264mW/g

4.6 LeftHandSide-Tilt-GSM850-High

Date/Time: 2006-6-3 20:05:53

Test Laboratory: SGS-GSM

LeftHandSide-Tilt-GSM850-high

DUT: GSM10000066; Type: GSM Dual-Band Mobile Phone; Serial: 01094500000509

Communication System: GSM850-GSM Mode; Frequency: 848.8 MHz; Duty Cycle: 1:8.3

Medium: HSL850 Medium parameters used: $f = 849$ MHz; $\sigma = 0.89$ mho/m; $\epsilon_r = 41.6$; $\rho = 1000$ kg/m³

Phantom section: Left Section

Measurement Standard: DASYS4 (High Precision Assessment)

DASY4 Configuration:

- Probe: ES3DV3 - SN3088; ConvF(5.91, 5.91, 5.91); Calibrated: 2005-9-13
- Sensor-Surface: 4mm (Mechanical Surface Detection)
- Electronics: DAE3 Sn569; Calibrated: 2005-11-17
- Phantom: SAM 12; Type: SAM V4.0; Serial: TP-1283
- Measurement SW: DASYS4, V4.6 Build 23; Postprocessing SW: SEMCAD, V1.8 Build 160

GSM 850 Left Tilt H/Area Scan (51x111x1): Measurement grid: dx=15mm, dy=15mm

Maximum value of SAR (interpolated) = 0.164 mW/g

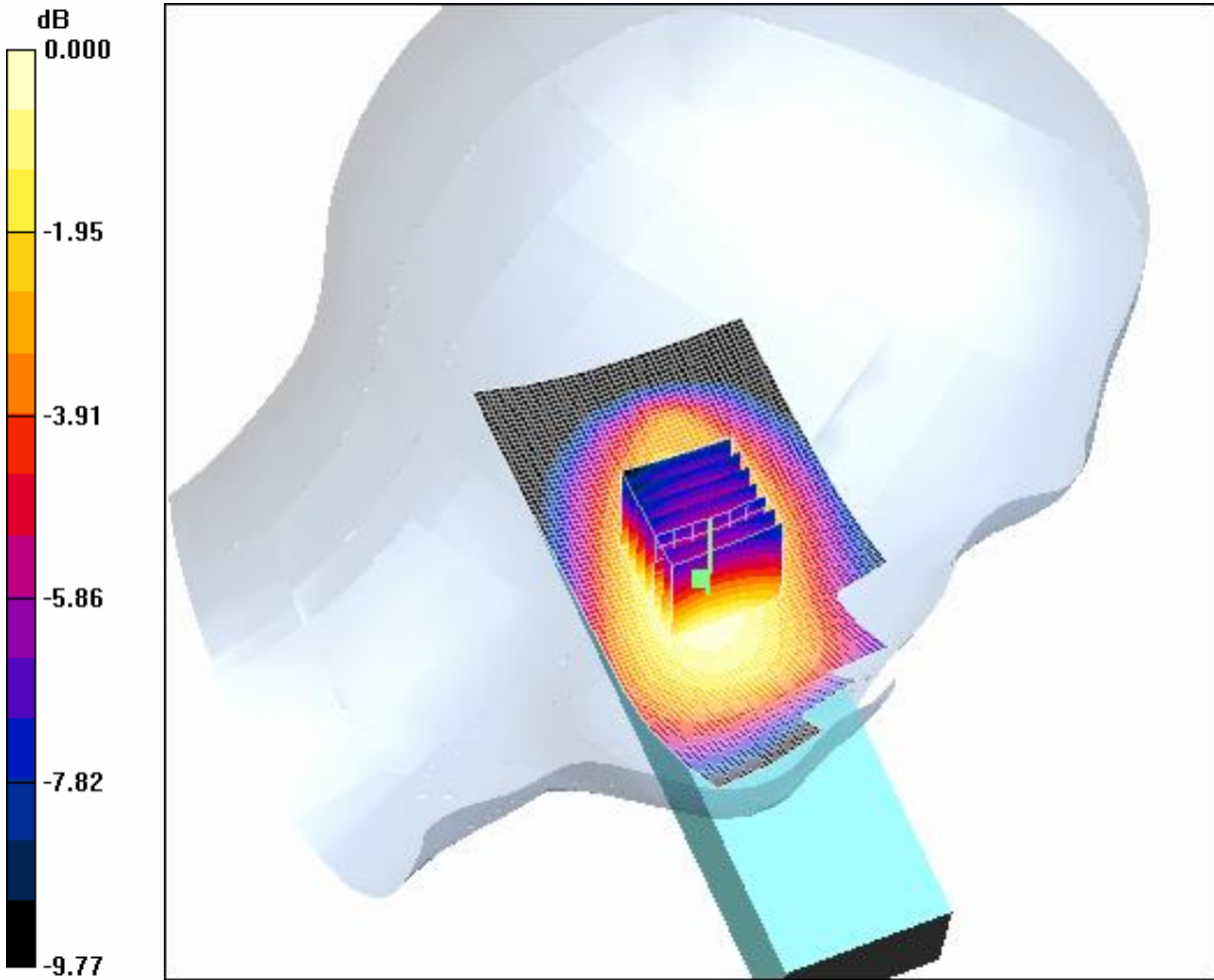
GSM 850 Left Tilt H/Zoom Scan (7x7x7)/Cube 0: Measurement grid: dx=5mm, dy=5mm, dz=5mm

Reference Value = 8.95 V/m; Power Drift = 0.015 dB

Peak SAR (extrapolated) = 0.195 W/kg

SAR(1 g) = 0.152 mW/g; SAR(10 g) = 0.111 mW/g

Maximum value of SAR (measured) = 0.161 mW/g



0 dB = 0.161mW/g

4.7 RightHandSide-Cheek-GSM850-Low

Date/Time: 2006-6-3 20:54:22

Test Laboratory: SGS-GSM

RightHandSide-Cheek-GSM850-low

DUT: GSM10000066; Type: GSM Dual-Band Mobile Phone; Serial: 010945000000509

Communication System: GSM850-GSM Mode; Frequency: 824.2 MHz; Duty Cycle: 1:8.3

Medium: HSL850 Medium parameters used (interpolated): $f = 824.2$ MHz; $\sigma = 0.866$ mho/m; $\epsilon_r = 41.8$;
 $\rho = 1000$ kg/m³

Phantom section: Right Section

Measurement Standard: DASY4 (High Precision Assessment)

DASY4 Configuration:

- Probe: ES3DV3 - SN3088; ConvF(5.91, 5.91, 5.91); Calibrated: 2005-9-13
- Sensor-Surface: 4mm (Mechanical Surface Detection)
- Electronics: DAE3 Sn569; Calibrated: 2005-11-17
- Phantom: SAM 12; Type: SAM V4.0; Serial: TP-1283
- Measurement SW: DASY4, V4.6 Build 23; Postprocessing SW: SEMCAD, V1.8 Build 160

GSM 850 Right Cheek L/Area Scan (41x111x1): Measurement grid: dx=15mm, dy=15mm

[Info: Interpolated medium parameters used for SAR evaluation.](#)

Maximum value of SAR (interpolated) = 1.11 mW/g

GSM 850 Right Cheek L/Zoom Scan (7x7x7)/Cube 0: Measurement grid: dx=5mm, dy=5mm,
dz=5mm

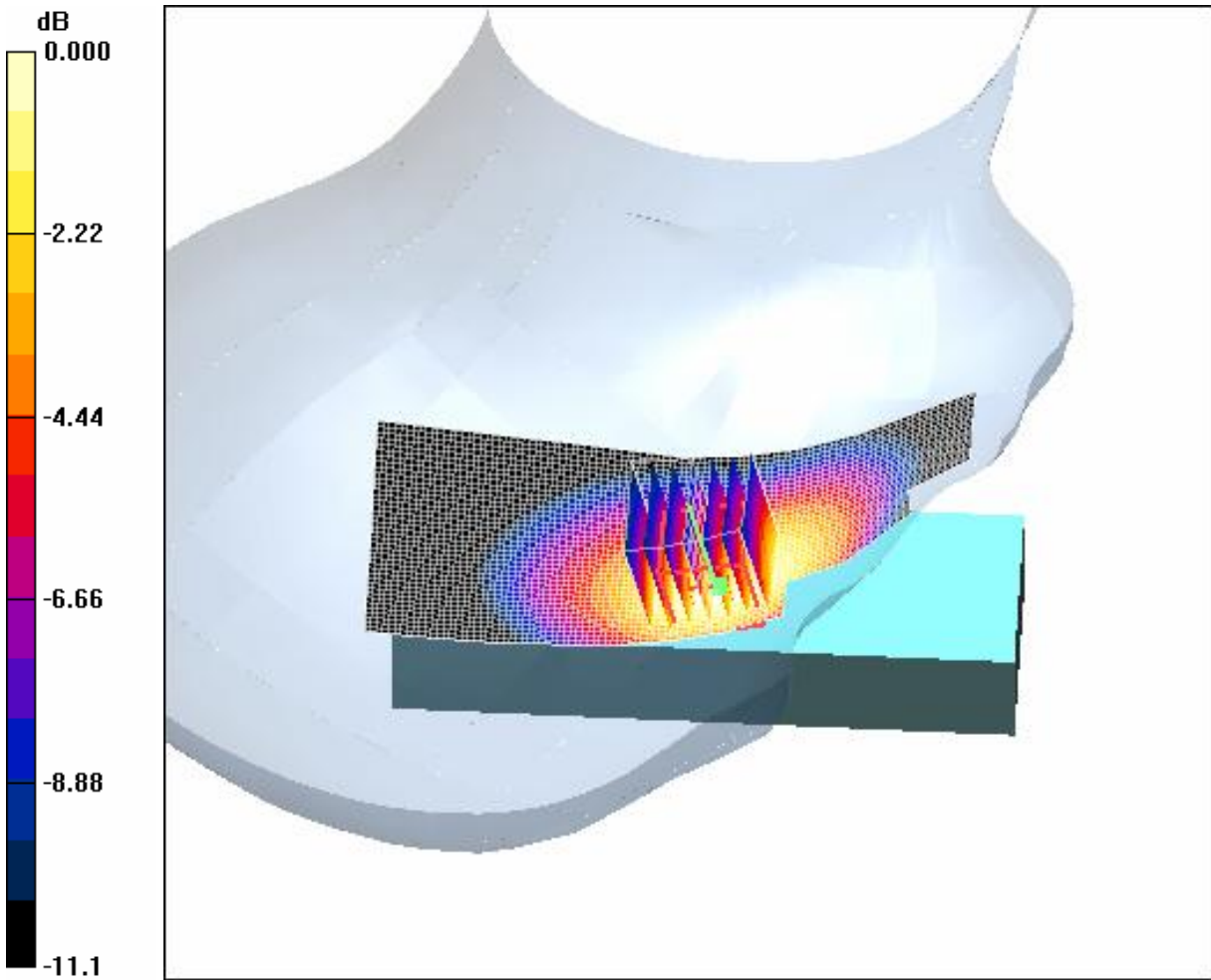
Reference Value = 8.90 V/m; Power Drift = 0.121 dB

Peak SAR (extrapolated) = 1.47 W/kg

SAR(1 g) = 1.02 mW/g; SAR(10 g) = 0.666 mW/g

[Info: Interpolated medium parameters used for SAR evaluation.](#)

Maximum value of SAR (measured) = 1.11 mW/g



0 dB = 1.11mW/g

4.8 RightHandSide-Cheek-GSM850-Middle

Date/Time: 2006-6-3 21:13:37

Test Laboratory: SGS-GSM

RightHandSide-Cheek-GSM850-mid

DUT: GSM10000066; Type: GSM Dual-Band Mobile Phone; Serial: 01094500000509

Communication System: GSM850-GSM Mode; Frequency: 836.4 MHz; Duty Cycle: 1:8.3

Medium: HSL850 Medium parameters used (interpolated): $f = 836.4$ MHz; $\sigma = 0.878$ mho/m; $\epsilon_r = 41.7$;
 $\rho = 1000$ kg/m³

Phantom section: Right Section

Measurement Standard: DASYS4 (High Precision Assessment)

DASY4 Configuration:

- Probe: ES3DV3 - SN3088; ConvF(5.91, 5.91, 5.91); Calibrated: 2005-9-13
- Sensor-Surface: 4mm (Mechanical Surface Detection)
- Electronics: DAE3 Sn569; Calibrated: 2005-11-17
- Phantom: SAM 12; Type: SAM V4.0; Serial: TP-1283
- Measurement SW: DASYS4, V4.6 Build 23; Postprocessing SW: SEMCAD, V1.8 Build 160

GSM 850 Right Cheek M/Area Scan (41x111x1): Measurement grid: dx=15mm, dy=15mm

[Info: Interpolated medium parameters used for SAR evaluation.](#)

Maximum value of SAR (interpolated) = 1.05 mW/g

GSM 850 Right Cheek M/Zoom Scan (7x7x7)/Cube 0: Measurement grid: dx=5mm, dy=5mm,
dz=5mm

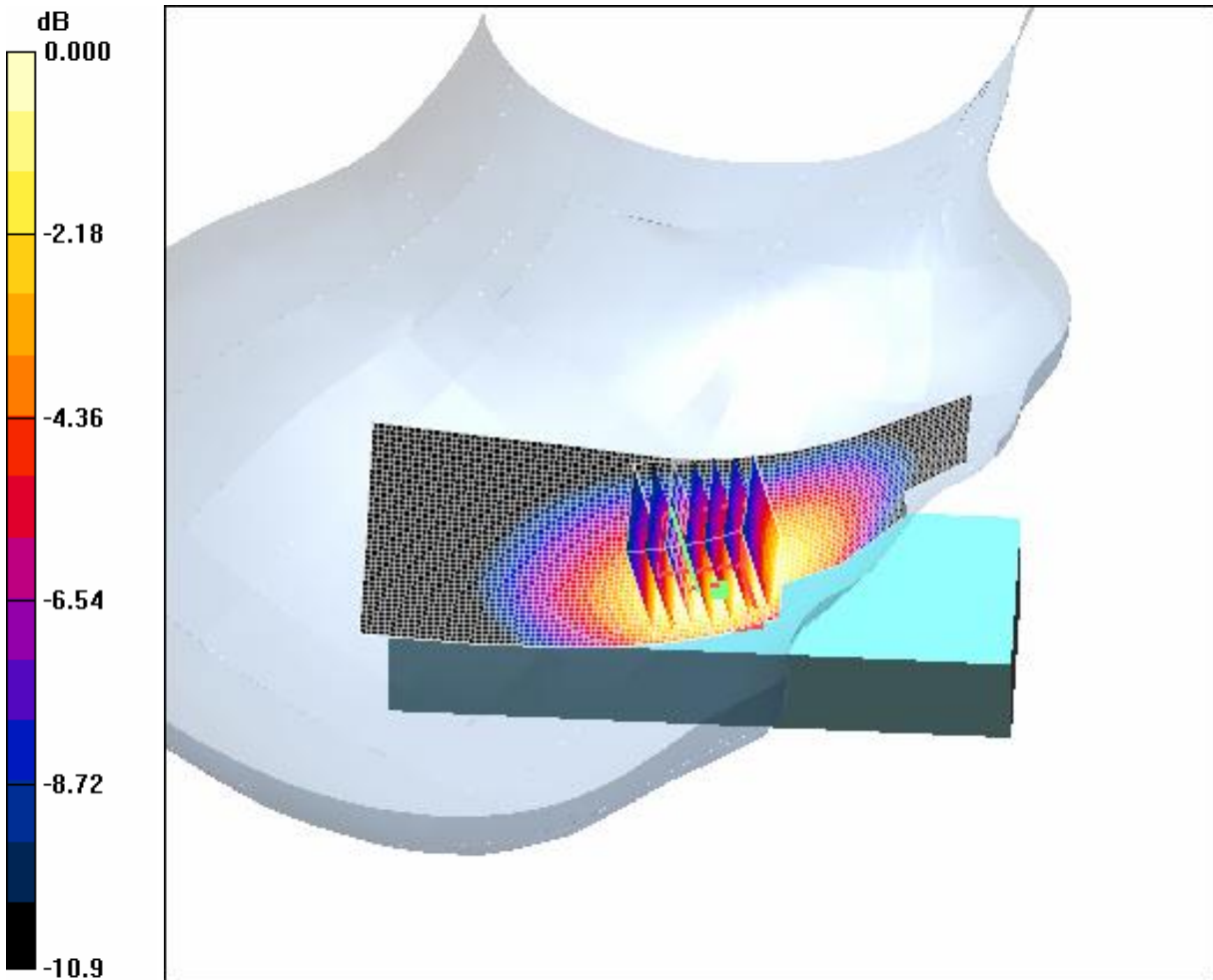
Reference Value = 8.33 V/m; Power Drift = -0.021 dB

Peak SAR (extrapolated) = 1.43 W/kg

SAR(1 g) = 0.973 mW/g; SAR(10 g) = 0.638 mW/g

[Info: Interpolated medium parameters used for SAR evaluation.](#)

Maximum value of SAR (measured) = 1.05 mW/g



0 dB = 1.05mW/g

4.9 RightHandSide-Cheek-GSM850-High

Date/Time: 2006-6-3 21:32:45

Test Laboratory: SGS-GSM

RightHandSide-Cheek-GSM850-high

DUT: GSM10000066; Type: GSM Dual-Band Mobile Phone; Serial: 010945000000509

Communication System: GSM850-GSM Mode; Frequency: 848.8 MHz; Duty Cycle: 1:8.3

Medium: HSL850 Medium parameters used: $f = 849$ MHz; $\sigma = 0.89$ mho/m; $\epsilon_r = 41.6$; $\rho = 1000$ kg/m³

Phantom section: Right Section

Measurement Standard: DASYS4 (High Precision Assessment)

DASY4 Configuration:

- Probe: ES3DV3 - SN3088; ConvF(5.91, 5.91, 5.91); Calibrated: 2005-9-13
- Sensor-Surface: 4mm (Mechanical Surface Detection)
- Electronics: DAE3 Sn569; Calibrated: 2005-11-17
- Phantom: SAM 12; Type: SAM V4.0; Serial: TP-1283
- Measurement SW: DASYS4, V4.6 Build 23; Postprocessing SW: SEMCAD, V1.8 Build 160

GSM 850 Right Cheek H/Area Scan (41x111x1): Measurement grid: dx=15mm, dy=15mm

Maximum value of SAR (interpolated) = 0.675 mW/g

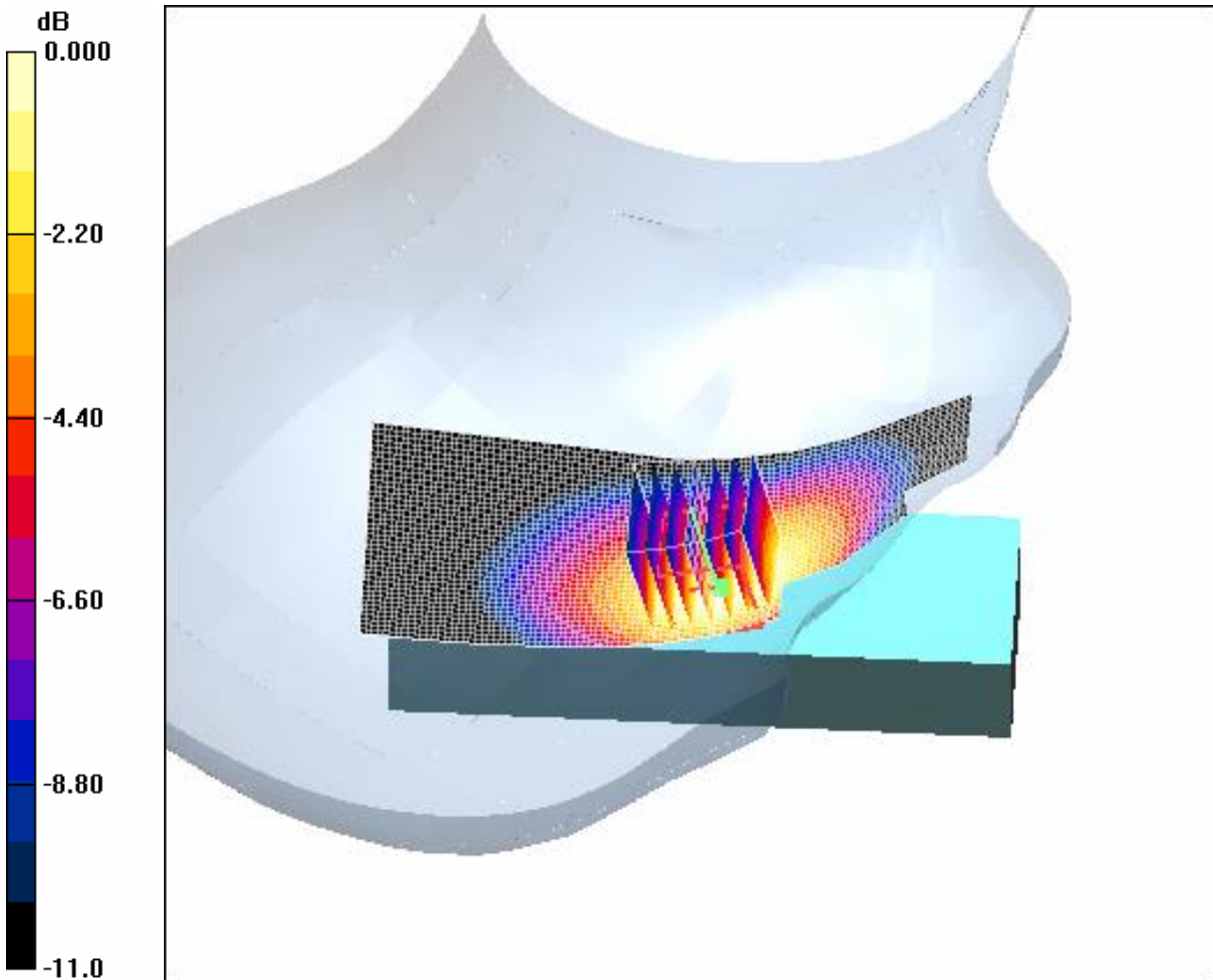
GSM 850 Right Cheek H/Zoom Scan (7x7x7)/Cube 0: Measurement grid: dx=5mm, dy=5mm, dz=5mm

Reference Value = 6.68 V/m; Power Drift = 0.024 dB

Peak SAR (extrapolated) = 0.917 W/kg

SAR(1 g) = 0.625 mW/g; SAR(10 g) = 0.408 mW/g

Maximum value of SAR (measured) = 0.675 mW/g



0 dB = 0.675mW/g

4.10 RightHandSide-Tilt-GSM850-Low

Date/Time: 2006-6-2 7:50:32

Test Laboratory: SGS-GSM

RightHandSide-Tilt-GSM850-low

DUT: GSM10000066; Type: GSM Dual-Band Mobile Phone; Serial: 01094500000509

Communication System: GSM850-GSM Mode; Frequency: 824.2 MHz; Duty Cycle: 1:8.3

Medium: HSL850 Medium parameters used (interpolated): $f = 824.2$ MHz; $\sigma = 0.866$ mho/m; $\epsilon_r = 41.8$;
 $\rho = 1000$ kg/m³

Phantom section: Right Section

Measurement Standard: DASY4 (High Precision Assessment)

DASY4 Configuration:

- Probe: ES3DV3 - SN3088; ConvF(5.91, 5.91, 5.91); Calibrated: 2005-9-13
- Sensor-Surface: 4mm (Mechanical Surface Detection)
- Electronics: DAE3 Sn569; Calibrated: 2005-11-17
- Phantom: SAM 12; Type: SAM V4.0; Serial: TP-1283
- Measurement SW: DASY4, V4.6 Build 23; Postprocessing SW: SEMCAD, V1.8 Build 160

GSM 850 Right Tilt L/Area Scan (41x111x1): Measurement grid: dx=15mm, dy=15mm

[Info: Interpolated medium parameters used for SAR evaluation.](#)

Maximum value of SAR (interpolated) = 0.325 mW/g

GSM 850 Right Tilt L/Zoom Scan (7x7x7)/Cube 0: Measurement grid: dx=5mm, dy=5mm,
dz=5mm

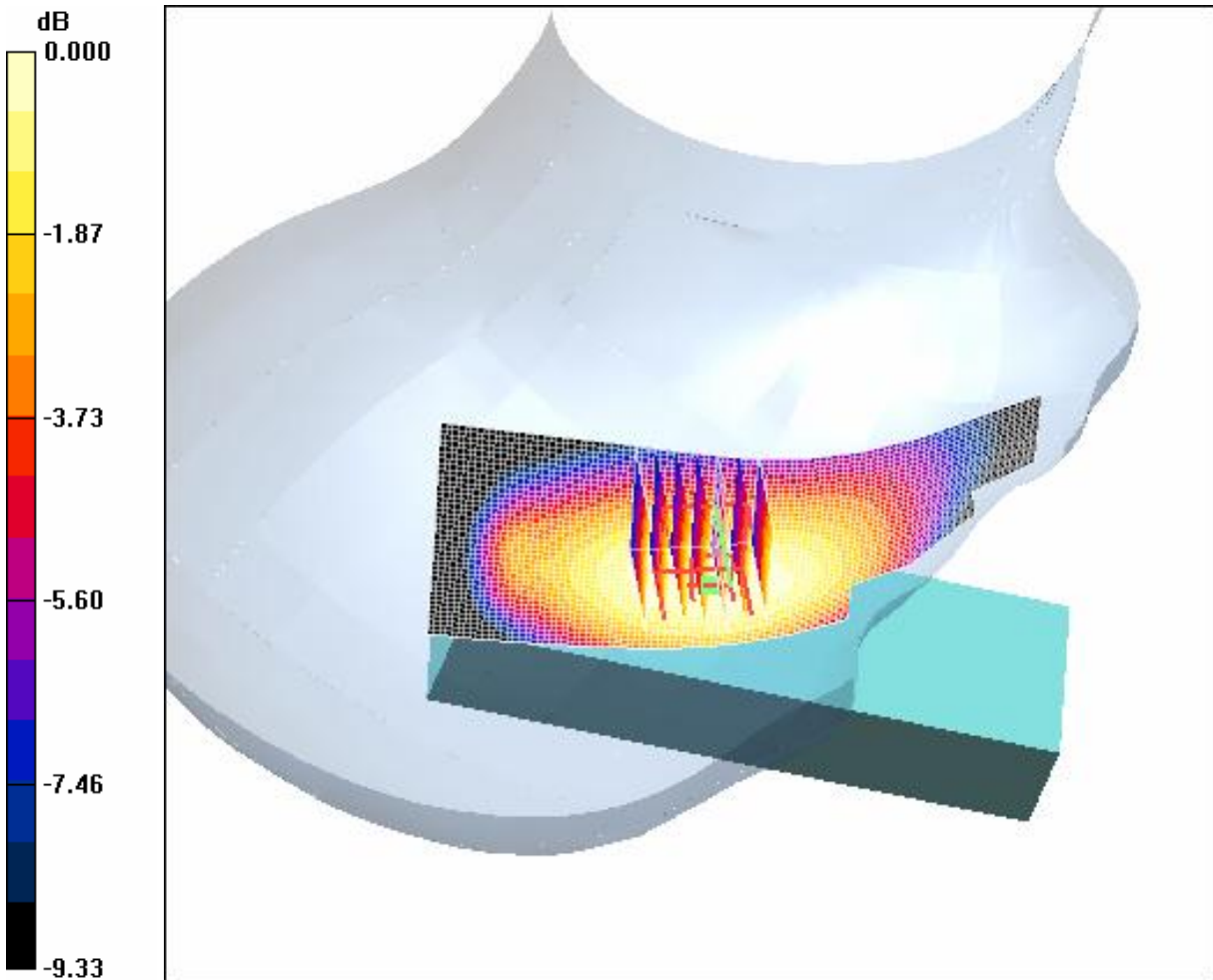
Reference Value = 12.8 V/m; Power Drift = -0.018 dB

Peak SAR (extrapolated) = 0.396 W/kg

SAR(1 g) = 0.305 mW/g; SAR(10 g) = 0.225 mW/g

[Info: Interpolated medium parameters used for SAR evaluation.](#)

Maximum value of SAR (measured) = 0.323 mW/g



0 dB = 0.323mW/g

4.11 RightHandSide-Tilt-GSM850-Middle

Date/Time: 2006-6-2 7:30:33

Test Laboratory: SGS-GSM

RightHandSide-Tilt-GSM850-mid

DUT: GSM10000066; Type: GSM Dual-Band Mobile Phone; Serial: 010945000000509

Communication System: GSM850-GSM Mode; Frequency: 836.4 MHz; Duty Cycle: 1:8.3

Medium: HSL850 Medium parameters used (interpolated): $f = 836.4$ MHz; $\sigma = 0.878$ mho/m; $\epsilon_r = 41.7$;
 $\rho = 1000$ kg/m³

Phantom section: Right Section

Measurement Standard: DASY4 (High Precision Assessment)

DASY4 Configuration:

- Probe: ES3DV3 - SN3088; ConvF(5.91, 5.91, 5.91); Calibrated: 2005-9-13
- Sensor-Surface: 4mm (Mechanical Surface Detection)
- Electronics: DAE3 Sn569; Calibrated: 2005-11-17
- Phantom: SAM 12; Type: SAM V4.0; Serial: TP-1283
- Measurement SW: DASY4, V4.6 Build 23; Postprocessing SW: SEMCAD, V1.8 Build 160

GSM 850 Right Tilt M/Area Scan (41x111x1): Measurement grid: dx=15mm, dy=15mm

[Info: Interpolated medium parameters used for SAR evaluation.](#)

Maximum value of SAR (interpolated) = 0.286 mW/g

GSM 850 Right Tilt M/Zoom Scan (7x7x7)/Cube 0: Measurement grid: dx=5mm, dy=5mm,
dz=5mm

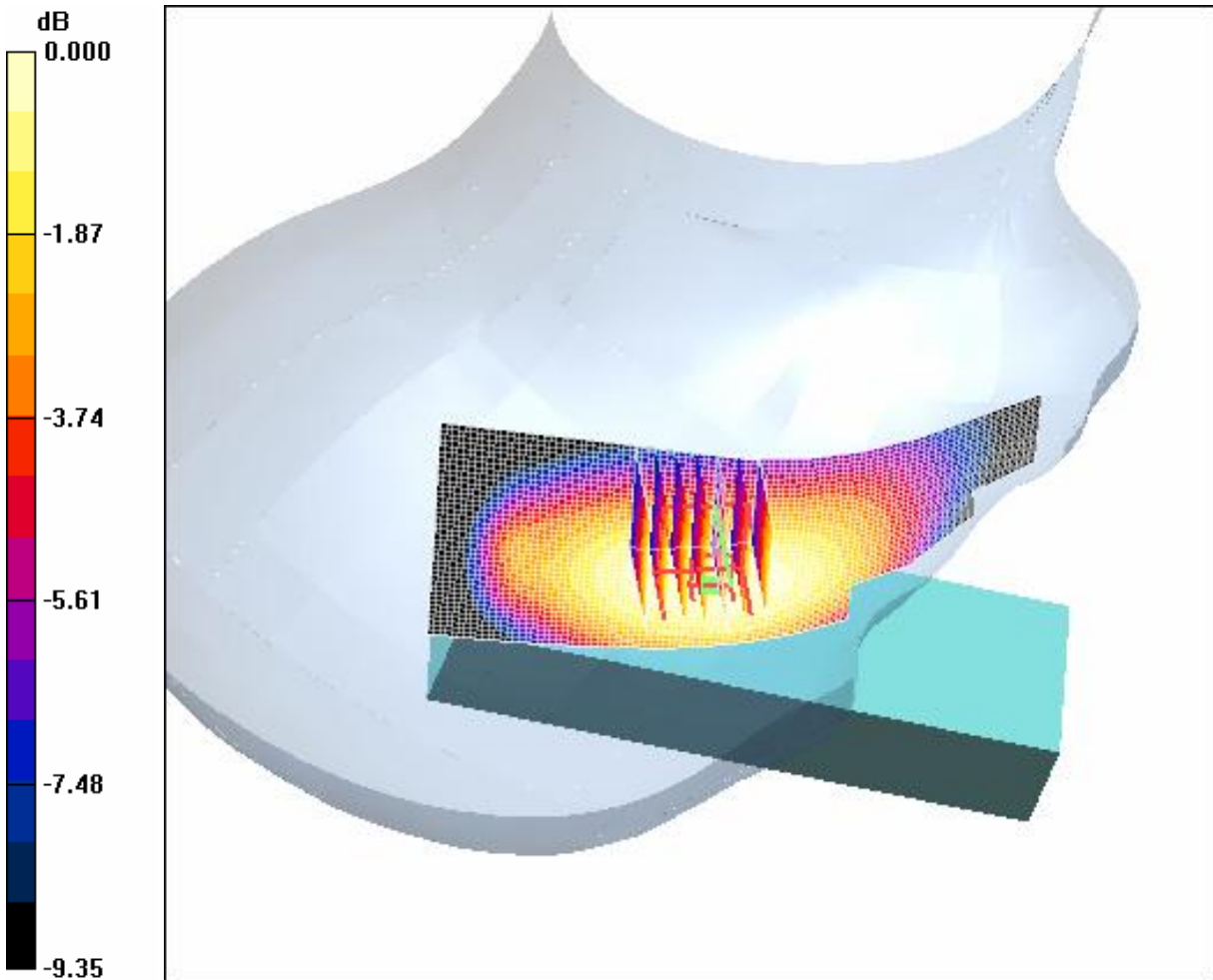
Reference Value = 11.8 V/m; Power Drift = 0.022 dB

Peak SAR (extrapolated) = 0.345 W/kg

SAR(1 g) = 0.269 mW/g; SAR(10 g) = 0.199 mW/g

[Info: Interpolated medium parameters used for SAR evaluation.](#)

Maximum value of SAR (measured) = 0.284 mW/g



0 dB = 0.284mW/g

4.12 RightHandSide-Tilt-GSM850-High

Date/Time: 2006-6-2 7:10:06

Test Laboratory: SGS-GSM

RightHandSide-Tilt-GSM850-high

DUT: GSM10000066; Type: GSM Dual-Band Mobile Phone; Serial: 010945000000509

Communication System: GSM850-GSM Mode; Frequency: 848.8 MHz; Duty Cycle: 1:8.3

Medium: HSL850 Medium parameters used: $f = 849$ MHz; $\sigma = 0.89$ mho/m; $\epsilon_r = 41.6$; $\rho = 1000$ kg/m³

Phantom section: Right Section

Measurement Standard: DASY4 (High Precision Assessment)

DASY4 Configuration:

- Probe: ES3DV3 - SN3088; ConvF(5.91, 5.91, 5.91); Calibrated: 2005-9-13
- Sensor-Surface: 4mm (Mechanical Surface Detection)
- Electronics: DAE3 Sn569; Calibrated: 2005-11-17
- Phantom: SAM 12; Type: SAM V4.0; Serial: TP-1283
- Measurement SW: DASY4, V4.6 Build 23; Postprocessing SW: SEMCAD, V1.8 Build 160

GSM 850 Right Tilt H/Area Scan (41x111x1): Measurement grid: dx=15mm, dy=15mm

Maximum value of SAR (interpolated) = 0.172 mW/g

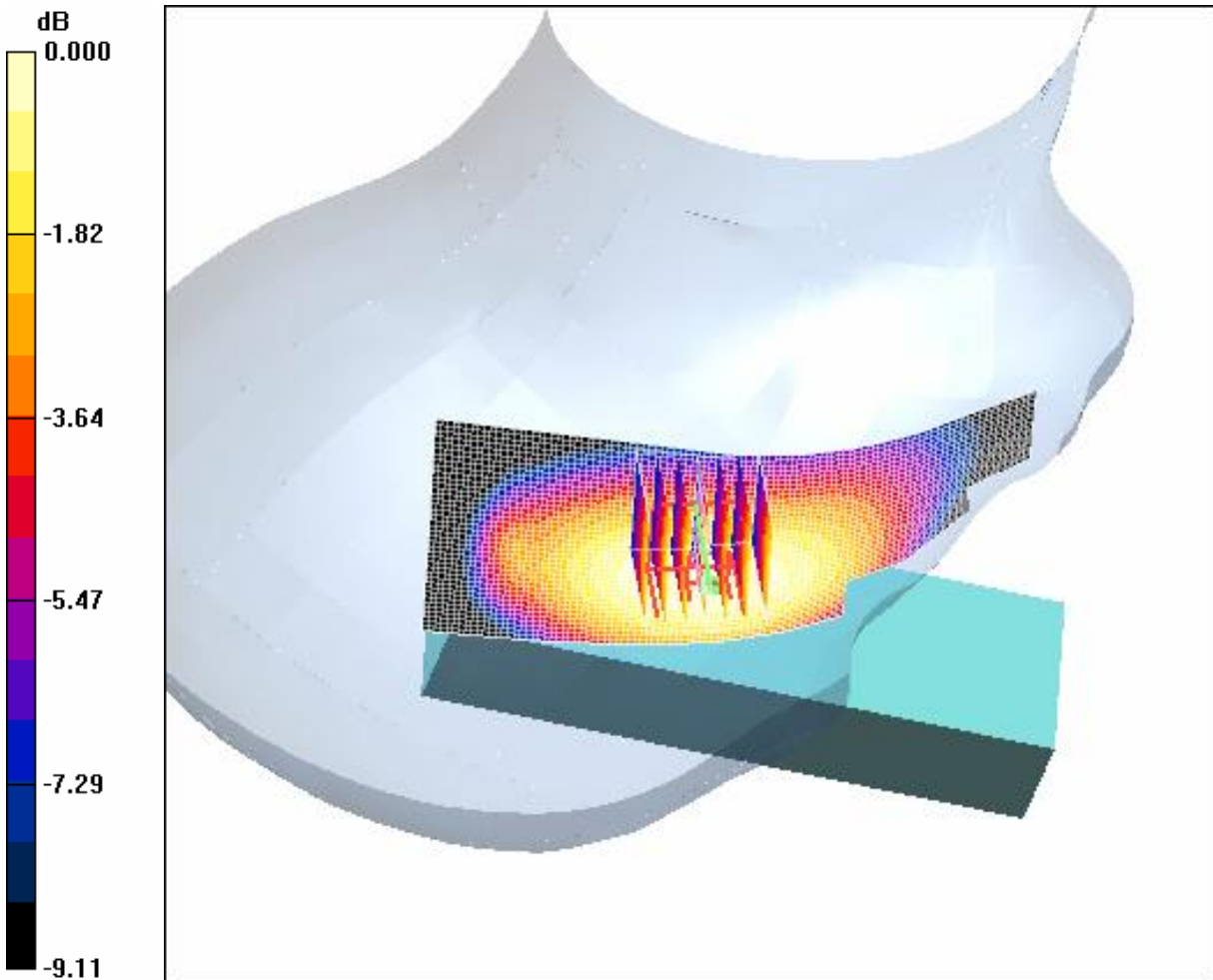
GSM 850 Right Tilt H/Zoom Scan (7x7x7)/Cube 0: Measurement grid: dx=5mm, dy=5mm,
dz=5mm

Reference Value = 8.99 V/m; Power Drift = 0.043 dB

Peak SAR (extrapolated) = 0.204 W/kg

SAR(1 g) = 0.160 mW/g; SAR(10 g) = 0.118 mW/g

Maximum value of SAR (measured) = 0.170 mW/g



0 dB = 0.170mW/g

4.13 Body-Worn-GSM850-Low

Date/Time: 2006-5-31 19:27:06

Test Laboratory: SGS-GSM

BodyWorn-GSM850-low

DUT: GSM10000066; Type: GSM Dual-Band Mobile Phone; Serial: 010945000000509

Communication System: GSM850-GSM Mode; Frequency: 824.2 MHz; Duty Cycle: 1:8.3

Medium: HSL850-Body Medium parameters used: $f = 824.2$ MHz; $\sigma = 0.984$ mho/m; $\epsilon_r = 52.6$; $\rho = 1000$ kg/m³

Phantom section: Flat Section

Measurement Standard: DASY4 (High Precision Assessment)

DASY4 Configuration:

- Probe: ES3DV3 - SN3088; ConvF(5.91, 5.91, 5.91); Calibrated: 2005-9-13
- Sensor-Surface: 4mm (Mechanical Surface Detection)
- Electronics: DAE3 Sn569; Calibrated: 2005-11-17
- Phantom: SAM 12; Type: SAM V4.0; Serial: TP-1283
- Measurement SW: DASY4, V4.6 Build 23; Postprocessing SW: SEMCAD, V1.8 Build 160

GSM 850 Display toward the ground Flat L/Area Scan (51x111x1): Measurement grid: dx=15mm, dy=15mm

[Info: Interpolated medium parameters used for SAR evaluation.](#)

Maximum value of SAR (interpolated) = 0.538 mW/g

GSM 850 Display toward the ground Flat L/Zoom Scan (7x7x7)/Cube 0: Measurement grid: dx=5mm, dy=5mm, dz=5mm

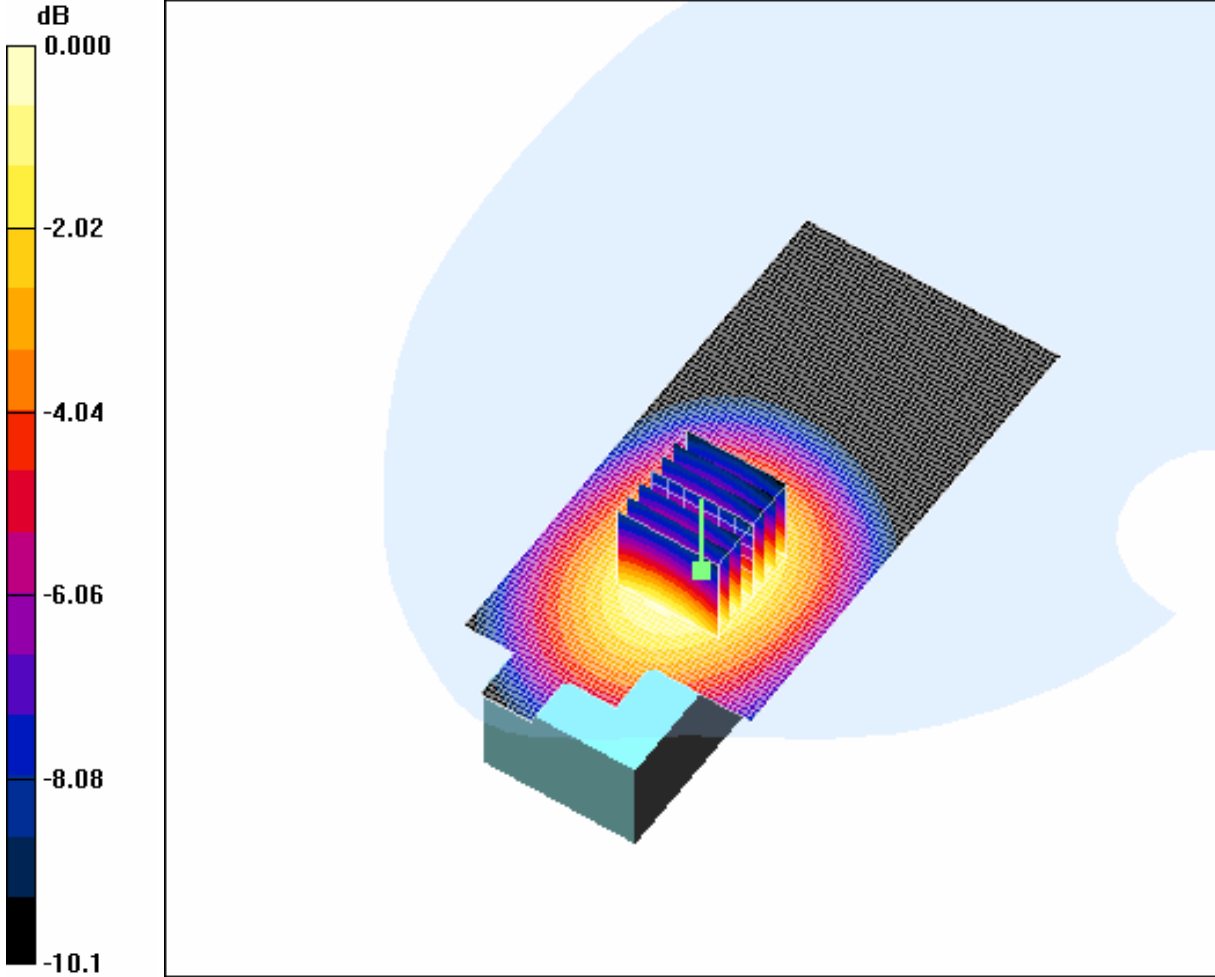
Reference Value = 3.81 V/m; Power Drift = 0.003 dB

Peak SAR (extrapolated) = 0.657 W/kg

SAR(1 g) = 0.501 mW/g; SAR(10 g) = 0.350 mW/g

[Info: Interpolated medium parameters used for SAR evaluation.](#)

Maximum value of SAR (measured) = 0.537 mW/g



0 dB = 0.537mW/g

4.14 Body-Worn-GSM850-Middle

Date/Time: 2006-5-31 19:46:03

Test Laboratory: SGS-GSM

BodyWorn-GSM850-mid

DUT: GSM10000066; Type: GSM Dual-Band Mobile Phone; Serial: 01094500000509

Communication System: GSM850-GSM Mode; Frequency: 836.4 MHz; Duty Cycle: 1:8.3

Medium: HSL850-Body Medium parameters used: $f = 836.4$ MHz; $\sigma = 0.998$ mho/m; $\epsilon_r = 52.5$; $\rho = 1000$ kg/m³

Phantom section: Flat Section

Measurement Standard: DASY4 (High Precision Assessment)

DASY4 Configuration:

- Probe: ES3DV3 - SN3088; ConvF(5.91, 5.91, 5.91); Calibrated: 2005-9-13
- Sensor-Surface: 4mm (Mechanical Surface Detection)
- Electronics: DAE3 Sn569; Calibrated: 2005-11-17
- Phantom: SAM 12; Type: SAM V4.0; Serial: TP-1283
- Measurement SW: DASY4, V4.6 Build 23; Postprocessing SW: SEMCAD, V1.8 Build 160

GSM 850 Display toward the ground Flat M/Area Scan (51x111x1): Measurement grid:
dx=15mm, dy=15mm

[Info: Interpolated medium parameters used for SAR evaluation.](#)

Maximum value of SAR (interpolated) = 0.336 mW/g

GSM 850 Display toward the ground Flat M/Zoom Scan (7x7x7)/Cube 0: Measurement grid:
dx=5mm, dy=5mm, dz=5mm

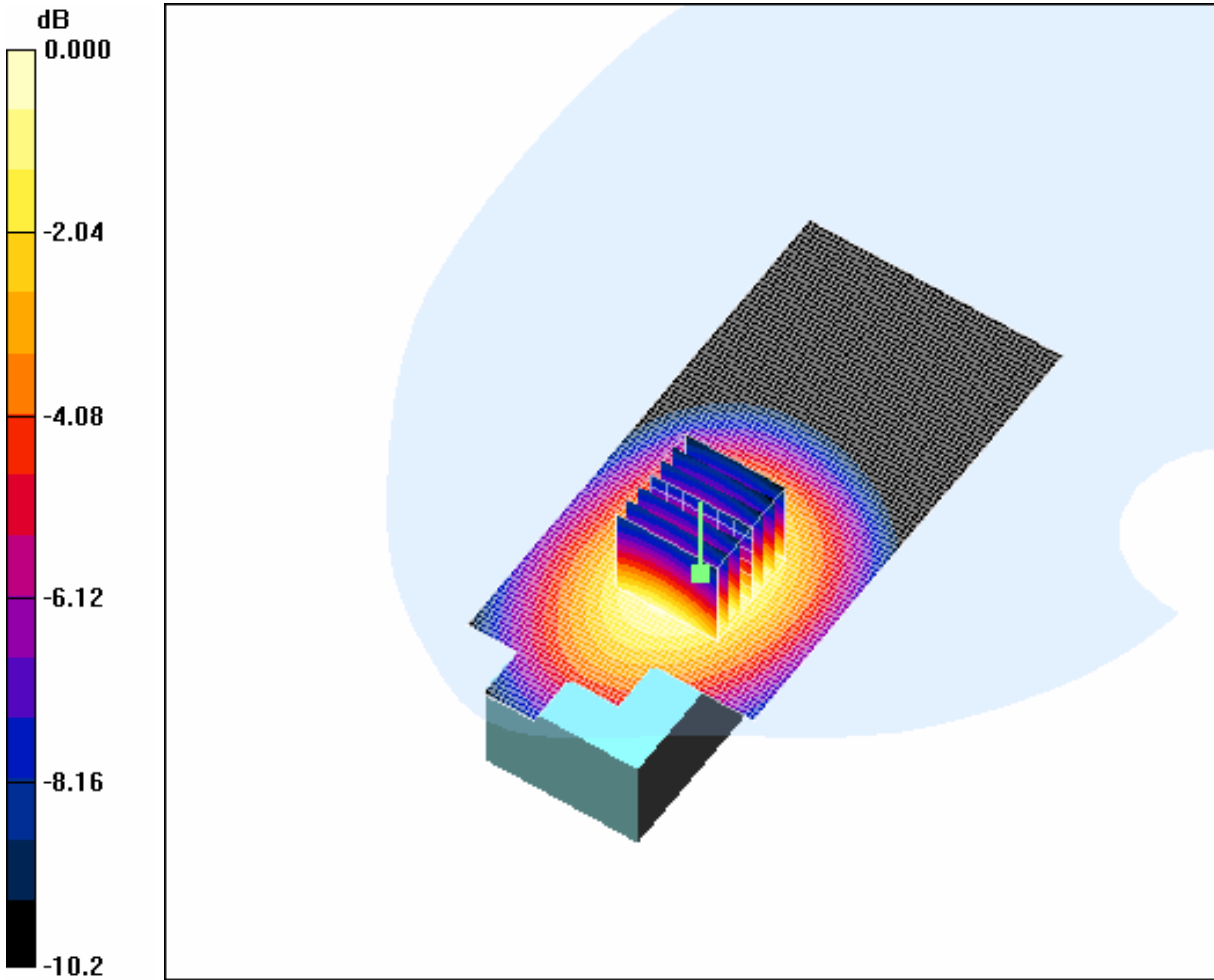
Reference Value = 2.77 V/m; Power Drift = 0.114 dB

Peak SAR (extrapolated) = 0.420 W/kg

SAR(1 g) = 0.317 mW/g; SAR(10 g) = 0.221 mW/g

[Info: Interpolated medium parameters used for SAR evaluation.](#)

Maximum value of SAR (measured) = 0.341 mW/g



0 dB = 0.341mW/g

4.15 Body-Worn-GSM850-High

Date/Time: 2006-5-31 20:07:27

Test Laboratory: SGS-GSM

BodyWorn-GSM850-high

DUT: GSM10000066; Type: GSM Dual-Band Mobile Phone; Serial: 01094500000509

Communication System: GSM850-GSM Mode; Frequency: 848.8 MHz; Duty Cycle: 1:8.3

Medium: HSL850-Body Medium parameters used: $f = 848.8$ MHz; $\sigma = 1.01$ mho/m; $\epsilon_r = 52.5$; $\rho = 1000$ kg/m³

Phantom section: Flat Section

Measurement Standard: DASY4 (High Precision Assessment)

DASY4 Configuration:

- Probe: ES3DV3 - SN3088; ConvF(5.91, 5.91, 5.91); Calibrated: 2005-9-13
- Sensor-Surface: 4mm (Mechanical Surface Detection)
- Electronics: DAE3 Sn569; Calibrated: 2005-11-17
- Phantom: SAM 12; Type: SAM V4.0; Serial: TP-1283
- Measurement SW: DASY4, V4.6 Build 23; Postprocessing SW: SEMCAD, V1.8 Build 160

GSM 850 Display toward the ground Flat H/Area Scan (51x111x1): Measurement grid:

$dx=15$ mm, $dy=15$ mm

Maximum value of SAR (interpolated) = 0.155 mW/g

GSM 850 Display toward the ground Flat H/Zoom Scan (7x7x7)/Cube 0: Measurement grid:

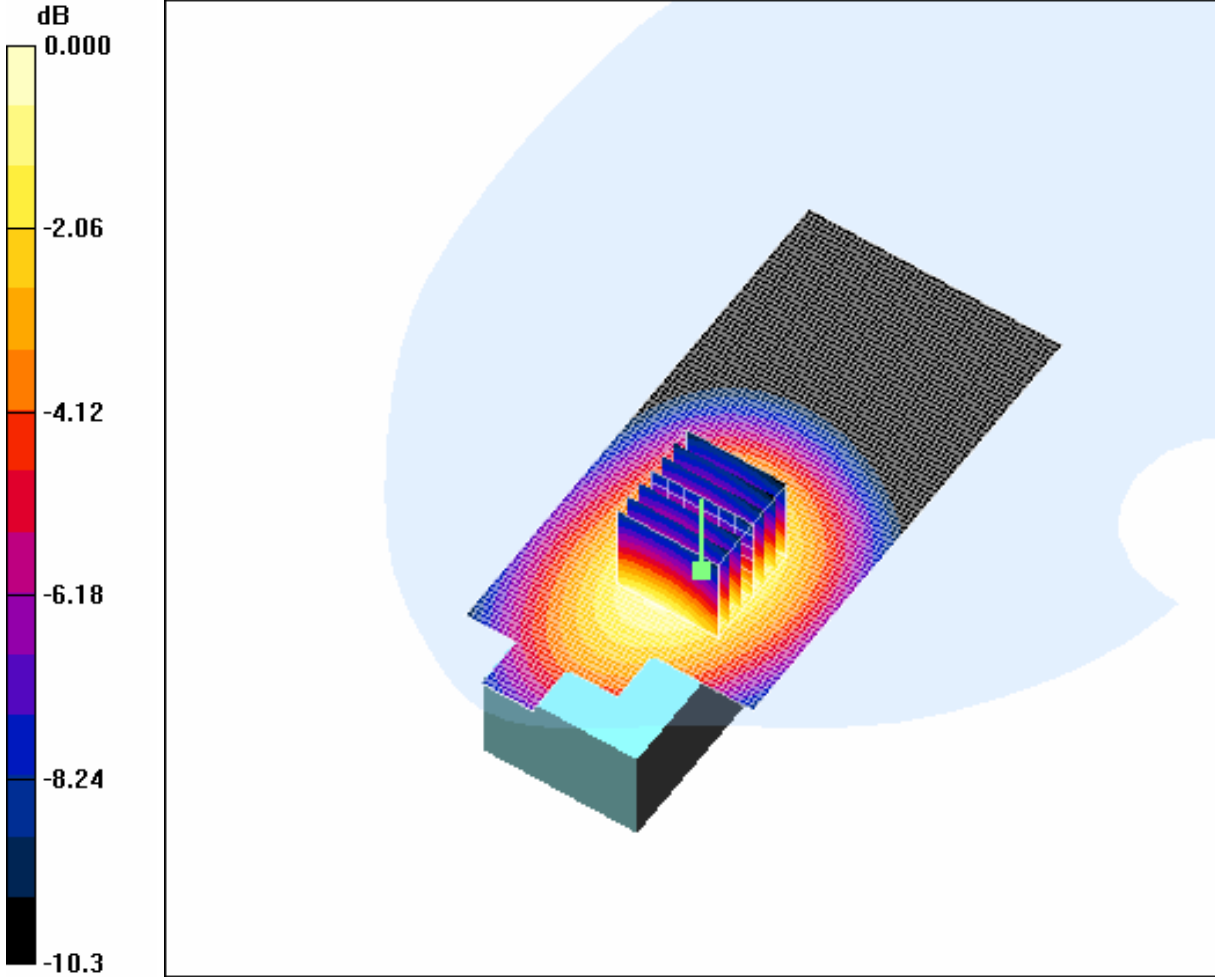
$dx=5$ mm, $dy=5$ mm, $dz=5$ mm

Reference Value = 1.99 V/m; Power Drift = -0.125 dB

Peak SAR (extrapolated) = 0.192 W/kg

SAR(1 g) = 0.146 mW/g; SAR(10 g) = 0.101 mW/g

Maximum value of SAR (measured) = 0.156 mW/g



0 dB = 0.156mW/g

4.16 LeftHandSide-Cheek-PCS1900-Low

Date/Time: 2006-5-31 20:47:07

Test Laboratory: SGS-GSM

LeftHandSide-Cheek-PCS1900-low

DUT: GSM10000066; Type: GSM Dual-Band Mobile Phone; Serial: 01094500000509

Communication System: PCS 1900; Frequency: 1850.2 MHz; Duty Cycle: 1:8.3

Medium: Head PCS 1900 Medium parameters used (interpolated): $f = 1850.2$ MHz; $\sigma = 1.38$ mho/m; $\epsilon_r = 39.6$; $\rho = 1000$ kg/m³

Phantom section: Left Section

Measurement Standard: DASYS4 (High Precision Assessment)

DASY4 Configuration:

- Probe: ES3DV3 - SN3088; ConvF(5.91, 5.91, 5.91); Calibrated: 2005-9-13
- Sensor-Surface: 4mm (Mechanical Surface Detection)
- Electronics: DAE3 Sn569; Calibrated: 2005-11-17
- Phantom: SAM 12; Type: SAM V4.0; Serial: TP-1283
- Measurement SW: DASYS4, V4.6 Build 23; Postprocessing SW: SEMCAD, V1.8 Build 160

PCS 1900 Left Cheek L/Area Scan (51x111x1): Measurement grid: dx=15mm, dy=15mm

[Info: Interpolated medium parameters used for SAR evaluation.](#)

Maximum value of SAR (interpolated) = 0.199 mW/g

PCS 1900 Left Cheek L/Zoom Scan (7x7x7)/Cube 0: Measurement grid: dx=5mm, dy=5mm, dz=5mm

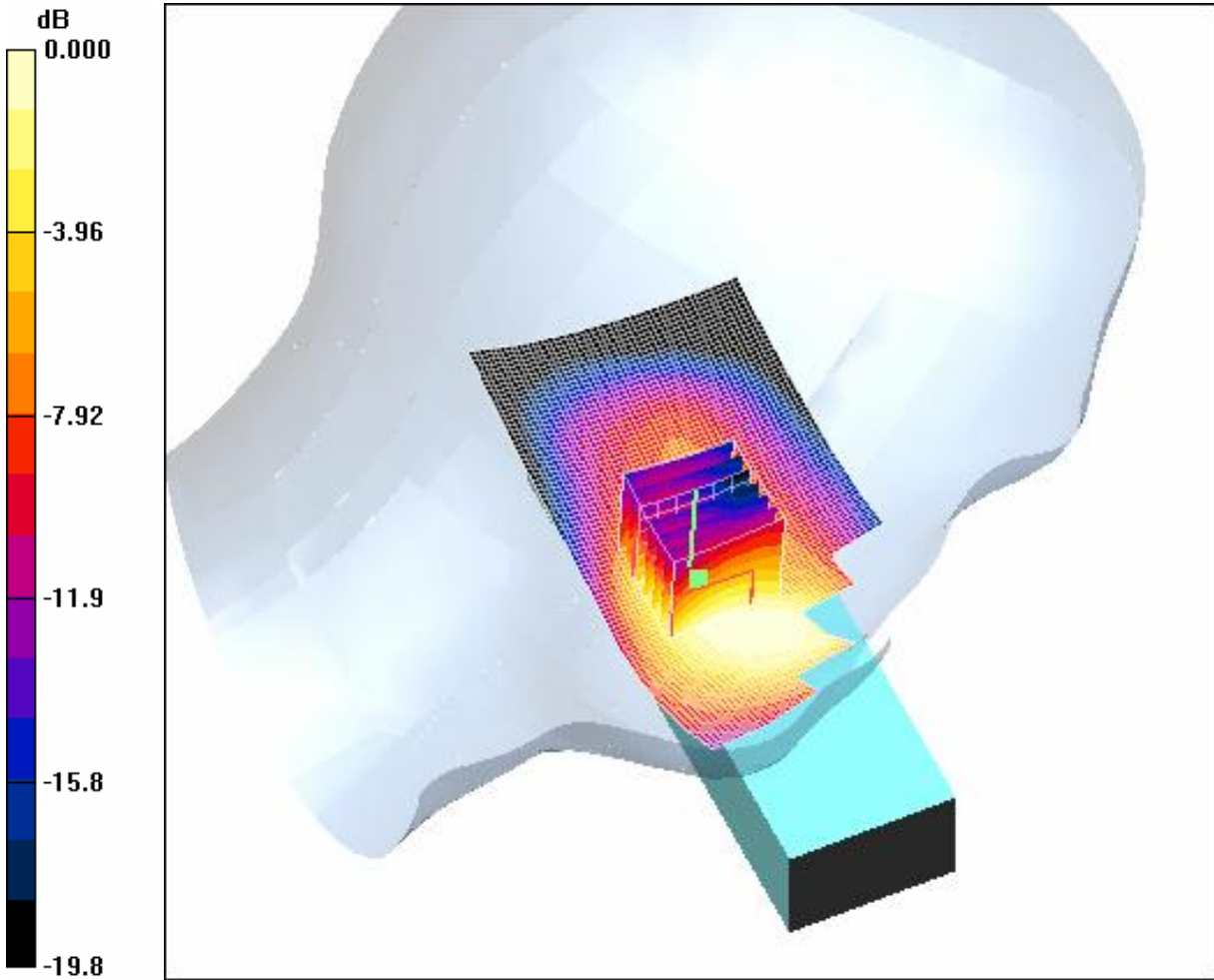
Reference Value = 3.49 V/m; Power Drift = -0.182 dB

Peak SAR (extrapolated) = 0.303 W/kg

SAR(1 g) = 0.169 mW/g; SAR(10 g) = 0.095 mW/g

[Info: Interpolated medium parameters used for SAR evaluation.](#)

Maximum value of SAR (measured) = 0.198 mW/g



0 dB = 0.198mW/g

4.17 LeftHandSide-Cheek-PCS1900-Middle

Date/Time: 2006-5-31 21:14:12

Test Laboratory: SGS-GSM

LeftHandSide-Cheek-PCS1900-mid

DUT: GSM10000066; Type: GSM Dual-Band Mobile Phone; Serial: 01094500000509

Communication System: PCS 1900; Frequency: 1880 MHz; Duty Cycle: 1:8.3

Medium: Head PCS 1900 Medium parameters used: $f = 1880$ MHz; $\sigma = 1.41$ mho/m; $\epsilon_r = 39.5$; $\rho = 1000$ kg/m³

Phantom section: Left Section

Measurement Standard: DASY4 (High Precision Assessment)

DASY4 Configuration:

- Probe: ES3DV3 - SN3088; ConvF(5.91, 5.91, 5.91); Calibrated: 2005-9-13
- Sensor-Surface: 4mm (Mechanical Surface Detection)
- Electronics: DAE3 Sn569; Calibrated: 2005-11-17
- Phantom: SAM 12; Type: SAM V4.0; Serial: TP-1283
- Measurement SW: DASY4, V4.6 Build 23; Postprocessing SW: SEMCAD, V1.8 Build 160

PCS 1900 Left Cheek M/Area Scan (51x111x1): Measurement grid: dx=15mm, dy=15mm

Maximum value of SAR (interpolated) = 0.174 mW/g

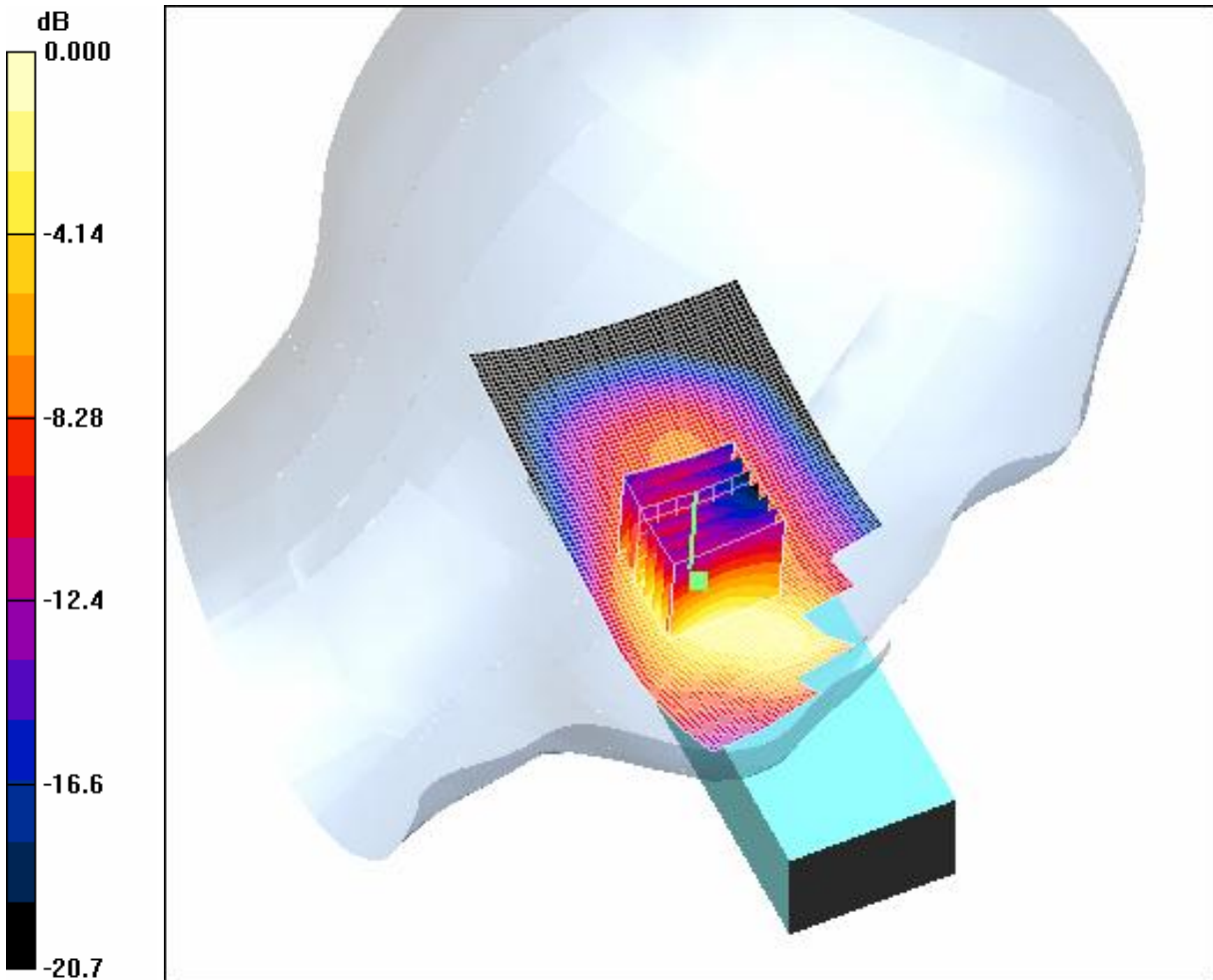
PCS 1900 Left Cheek M/Zoom Scan (7x7x7)/Cube 0: Measurement grid: dx=5mm, dy=5mm, dz=5mm

Reference Value = 3.11 V/m; Power Drift = -0.044 dB

Peak SAR (extrapolated) = 0.264 W/kg

SAR(1 g) = 0.150 mW/g; SAR(10 g) = 0.081 mW/g

Maximum value of SAR (measured) = 0.175 mW/g



0 dB = 0.175mW/g

4.18 LeftHandSide-Cheek-PCS1900-High

Date/Time: 2006-5-31 21:38:32

Test Laboratory: SGS-GSM

LeftHandSide-Cheek-PCS1900-high

DUT: GSM10000066; Type: GSM Dual-Band Mobile Phone; Serial: 01094500000509

Communication System: PCS 1900; Frequency: 1909.8 MHz; Duty Cycle: 1:8.3

Medium: Head PCS 1900 Medium parameters used: $f = 1910$ MHz; $\sigma = 1.43$ mho/m; $\epsilon_r = 39.4$; $\rho = 1000$ kg/m³

Phantom section: Left Section

Measurement Standard: DASY4 (High Precision Assessment)

DASY4 Configuration:

- Probe: ES3DV3 - SN3088; ConvF(5.91, 5.91, 5.91); Calibrated: 2005-9-13
- Sensor-Surface: 4mm (Mechanical Surface Detection)
- Electronics: DAE3 Sn569; Calibrated: 2005-11-17
- Phantom: SAM 12; Type: SAM V4.0; Serial: TP-1283
- Measurement SW: DASY4, V4.6 Build 23; Postprocessing SW: SEMCAD, V1.8 Build 160

PCS 1900 Left Cheek H/Area Scan (51x111x1): Measurement grid: dx=15mm, dy=15mm

Maximum value of SAR (interpolated) = 0.291 mW/g

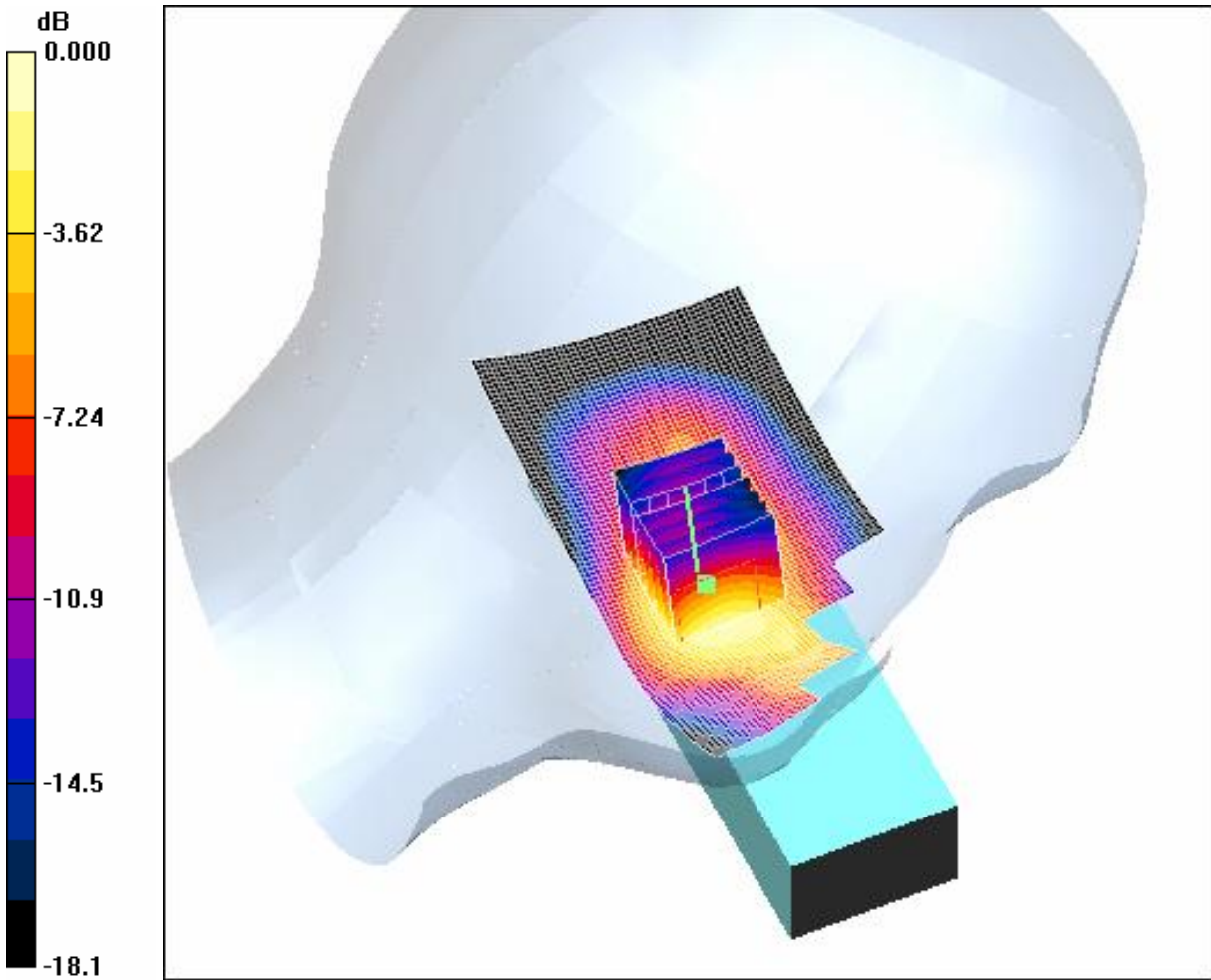
PCS 1900 Left Cheek H/Zoom Scan (7x7x7)/Cube 0: Measurement grid: dx=5mm, dy=5mm, dz=5mm

Reference Value = 4.32 V/m; Power Drift = 0.044 dB

Peak SAR (extrapolated) = 0.418 W/kg

SAR(1 g) = 0.247 mW/g; SAR(10 g) = 0.139 mW/g

Maximum value of SAR (measured) = 0.273 mW/g



0 dB = 0.273mW/g

4.19 LeftHandSide-Tilt-PCS1900-Low

Date/Time: 2006-5-31 22:40:06

Test Laboratory: SGS-GSM

LeftHandSide-Tilt-PCS1900-low

DUT: GSM10000066; Type: GSM Dual-Band Mobile Phone; Serial: 01094500000509

Communication System: PCS 1900; Frequency: 1850.2 MHz; Duty Cycle: 1:8.3

Medium: Head PCS 1900 Medium parameters used (interpolated): $f = 1850.2$ MHz; $\sigma = 1.38$ mho/m; $\epsilon_r = 39.6$; $\rho = 1000$ kg/m³

Phantom section: Left Section

Measurement Standard: DASY4 (High Precision Assessment)

DASY4 Configuration:

- Probe: ES3DV3 - SN3088; ConvF(5.91, 5.91, 5.91); Calibrated: 2005-9-13
- Sensor-Surface: 4mm (Mechanical Surface Detection)
- Electronics: DAE3 Sn569; Calibrated: 2005-11-17
- Phantom: SAM 12; Type: SAM V4.0; Serial: TP-1283
- Measurement SW: DASY4, V4.6 Build 23; Postprocessing SW: SEMCAD, V1.8 Build 160

PCS 1900 Left Tilt L/Area Scan (51x111x1): Measurement grid: dx=15mm, dy=15mm

[Info: Interpolated medium parameters used for SAR evaluation.](#)

Maximum value of SAR (interpolated) = 0.068 mW/g

PCS 1900 Left Tilt L/Zoom Scan (7x7x7)/Cube 0: Measurement grid: dx=5mm, dy=5mm, dz=5mm

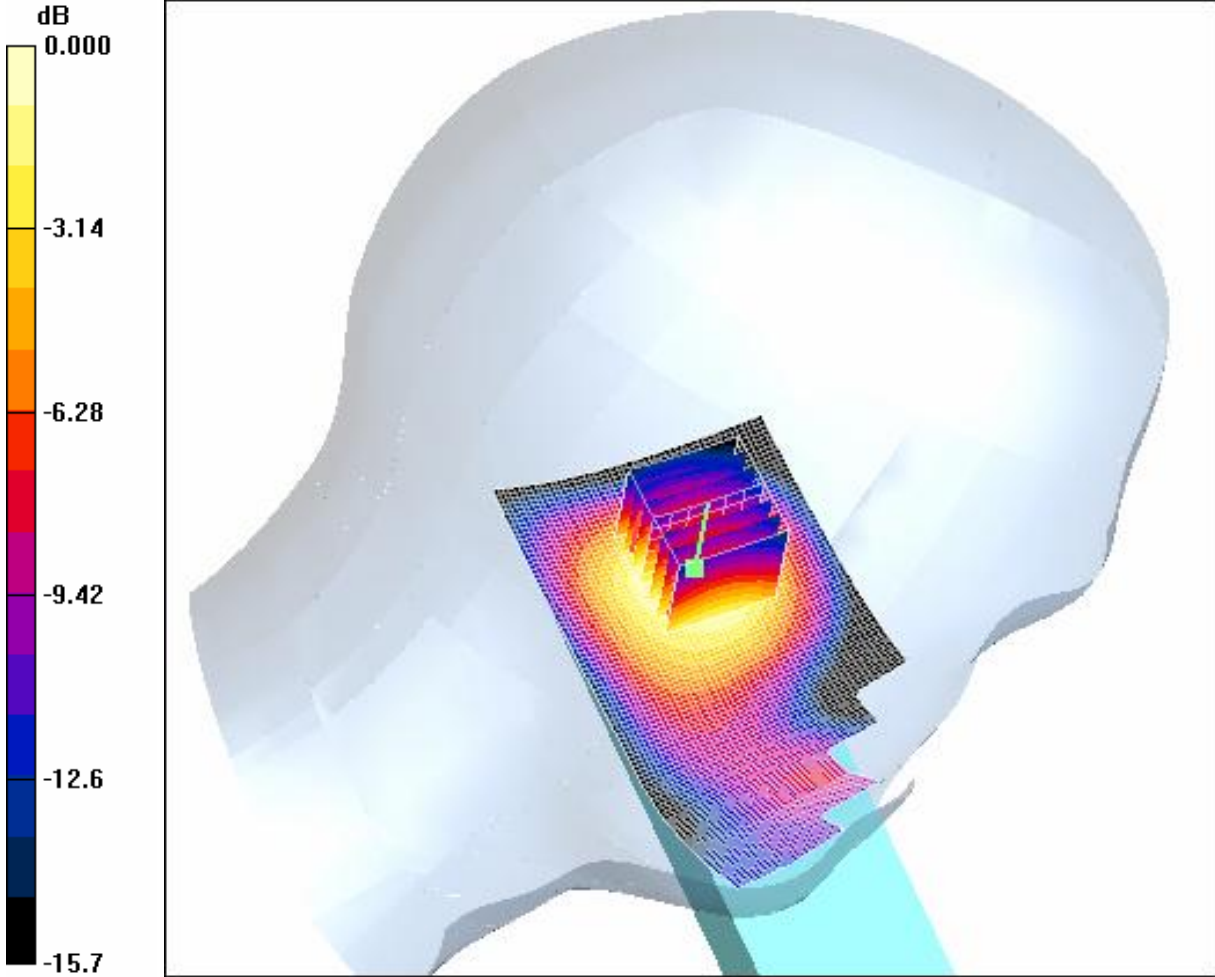
Reference Value = 5.41 V/m; Power Drift = 0.004 dB

Peak SAR (extrapolated) = 0.079 W/kg

SAR(1 g) = 0.057 mW/g; SAR(10 g) = 0.036 mW/g

[Info: Interpolated medium parameters used for SAR evaluation.](#)

Maximum value of SAR (measured) = 0.062 mW/g



0 dB = 0.062mW/g

4.20 LeftHandSide-Tilt-PCS1900-Middle

Date/Time: 2006-5-31 22:20:26

Test Laboratory: SGS-GSM

LeftHandSide-Tilt-PCS1900-mid

DUT: GSM10000066; Type: GSM Dual-Band Mobile Phone; Serial: 01094500000509

Communication System: PCS 1900; Frequency: 1880 MHz; Duty Cycle: 1:8.3

Medium: Head PCS 1900 Medium parameters used: $f = 1880$ MHz; $\sigma = 1.41$ mho/m; $\epsilon_r = 39.5$; $\rho = 1000$ kg/m³

Phantom section: Left Section

Measurement Standard: DASY4 (High Precision Assessment)

DASY4 Configuration:

- Probe: ES3DV3 - SN3088; ConvF(5.91, 5.91, 5.91); Calibrated: 2005-9-13
- Sensor-Surface: 4mm (Mechanical Surface Detection)
- Electronics: DAE3 Sn569; Calibrated: 2005-11-17
- Phantom: SAM 12; Type: SAM V4.0; Serial: TP-1283
- Measurement SW: DASY4, V4.6 Build 23; Postprocessing SW: SEMCAD, V1.8 Build 160

PCS 1900 Left Tilt M/Area Scan (51x111x1): Measurement grid: dx=15mm, dy=15mm

Maximum value of SAR (interpolated) = 0.094 mW/g

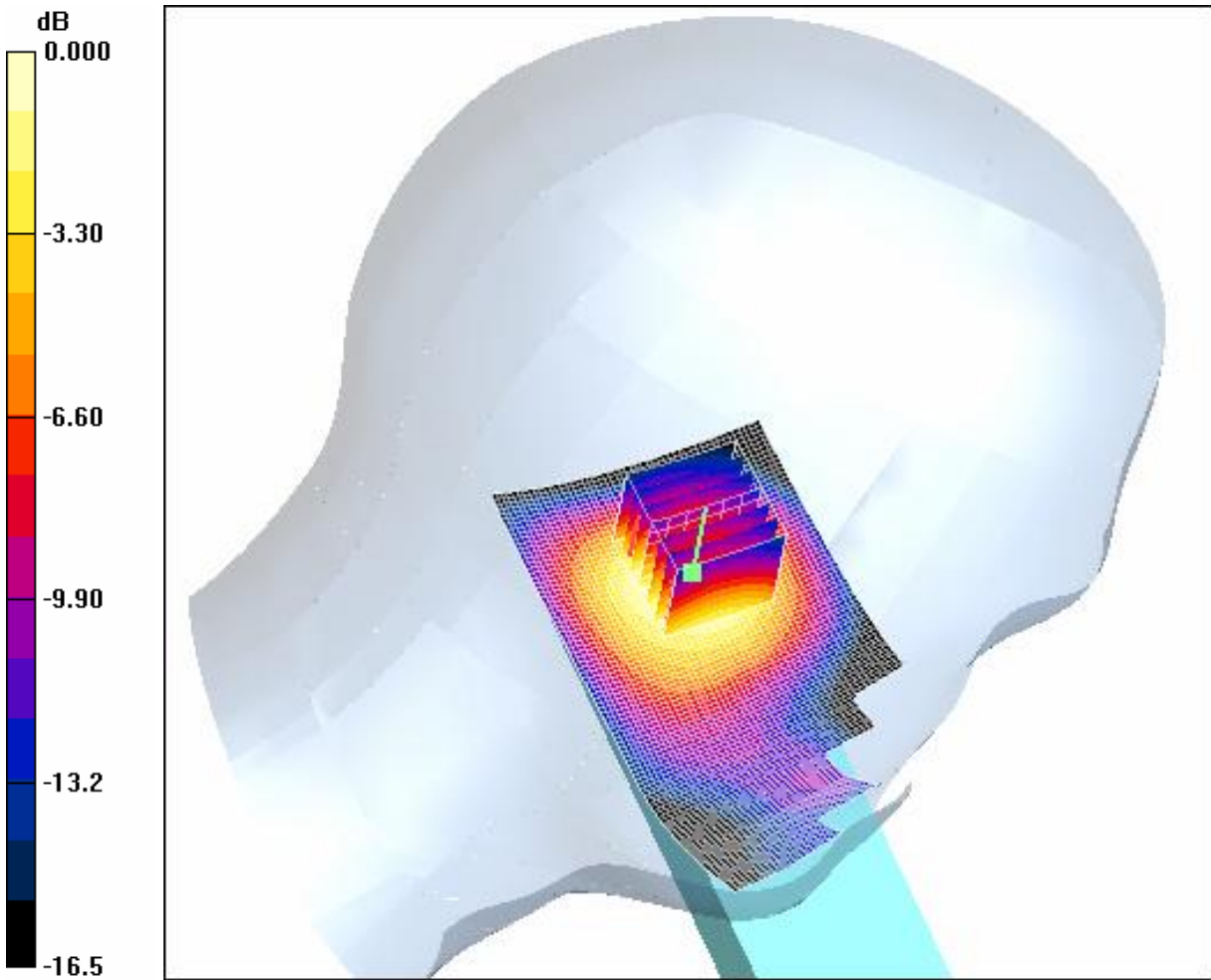
PCS 1900 Left Tilt M/Zoom Scan (7x7x7)/Cube 0: Measurement grid: dx=5mm, dy=5mm, dz=5mm

Reference Value = 6.26 V/m; Power Drift = -0.159 dB

Peak SAR (extrapolated) = 0.105 W/kg

SAR(1 g) = 0.076 mW/g; SAR(10 g) = 0.047 mW/g

Maximum value of SAR (measured) = 0.083 mW/g



0 dB = 0.083mW/g

4.21 LeftHandSide-Tilt-PCS1900-High

Date/Time: 2006-5-31 22:01:08

Test Laboratory: SGS-GSM

LeftHandSide-Tilt-PCS1900-high

DUT: GSM10000066; Type: GSM Dual-Band Mobile Phone; Serial: 01094500000509

Communication System: PCS 1900; Frequency: 1909.8 MHz; Duty Cycle: 1:8.3

Medium: Head PCS 1900 Medium parameters used: $f = 1910$ MHz; $\sigma = 1.43$ mho/m; $\epsilon_r = 39.4$; $\rho = 1000$ kg/m³

Phantom section: Left Section

Measurement Standard: DASY4 (High Precision Assessment)

DASY4 Configuration:

- Probe: ES3DV3 - SN3088; ConvF(5.91, 5.91, 5.91); Calibrated: 2005-9-13
- Sensor-Surface: 4mm (Mechanical Surface Detection)
- Electronics: DAE3 Sn569; Calibrated: 2005-11-17
- Phantom: SAM 12; Type: SAM V4.0; Serial: TP-1283
- Measurement SW: DASY4, V4.6 Build 23; Postprocessing SW: SEMCAD, V1.8 Build 160

PCS 1900 Left Tilt H/Area Scan (51x111x1): Measurement grid: dx=15mm, dy=15mm

Maximum value of SAR (interpolated) = 0.170 mW/g

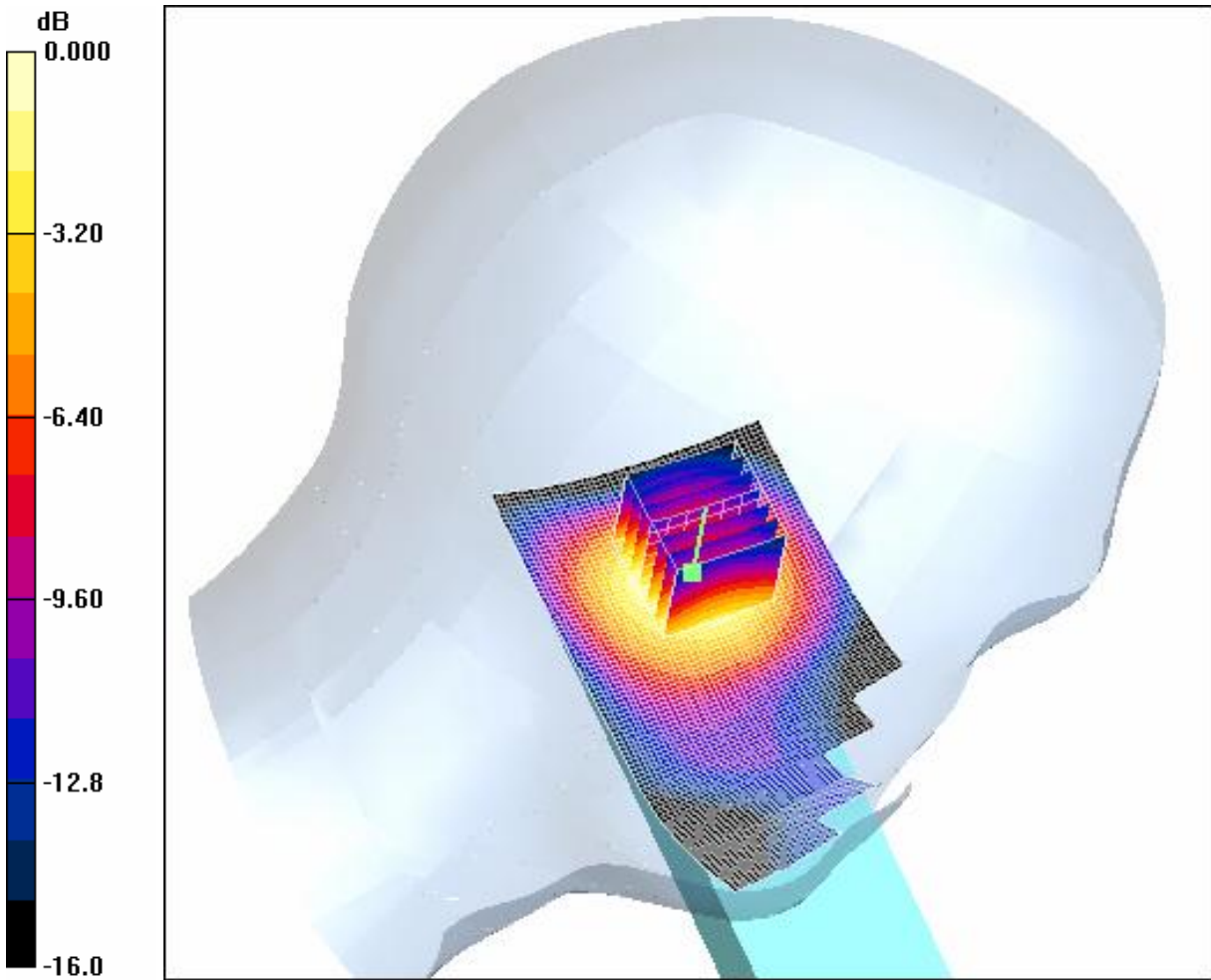
PCS 1900 Left Tilt H/Zoom Scan (7x7x7)/Cube 0: Measurement grid: dx=5mm, dy=5mm, dz=5mm

Reference Value = 8.73 V/m; Power Drift = -0.310 dB

Peak SAR (extrapolated) = 0.196 W/kg

SAR(1 g) = 0.138 mW/g; SAR(10 g) = 0.084 mW/g

Maximum value of SAR (measured) = 0.151 mW/g



0 dB = 0.151mW/g

4.22 RightHandSide-Cheek-PCS1900-Low

Date/Time: 2006-6-4 2:01:55

Test Laboratory: SGS-GSM

RightHandSide-Cheek-PCS1900-low

DUT: GSM10000066; Type: GSM Dual-Band Mobile Phone; Serial: 01094500000509

Communication System: PCS 1900; Frequency: 1850.2 MHz; Duty Cycle: 1:8.3

Medium: Head PCS 1900 Medium parameters used (interpolated): $f = 1850.2$ MHz; $\sigma = 1.38$ mho/m; $\epsilon_r = 39.6$; $\rho = 1000$ kg/m³

Phantom section: Right Section

Measurement Standard: DASYS4 (High Precision Assessment)

DASY4 Configuration:

- Probe: ES3DV3 - SN3088; ConvF(5.91, 5.91, 5.91); Calibrated: 2005-9-13
- Sensor-Surface: 4mm (Mechanical Surface Detection)
- Electronics: DAE3 Sn569; Calibrated: 2005-11-17
- Phantom: SAM 12; Type: SAM V4.0; Serial: TP-1283
- Measurement SW: DASYS4, V4.6 Build 23; Postprocessing SW: SEMCAD, V1.8 Build 160

PCS 1900 Right Cheek L/Area Scan (41x111x1): Measurement grid: dx=15mm, dy=15mm

[Info: Interpolated medium parameters used for SAR evaluation.](#)

Maximum value of SAR (interpolated) = 0.202 mW/g

PCS 1900 Right Cheek L/Zoom Scan (7x7x7)/Cube 0: Measurement grid: dx=5mm, dy=5mm, dz=5mm

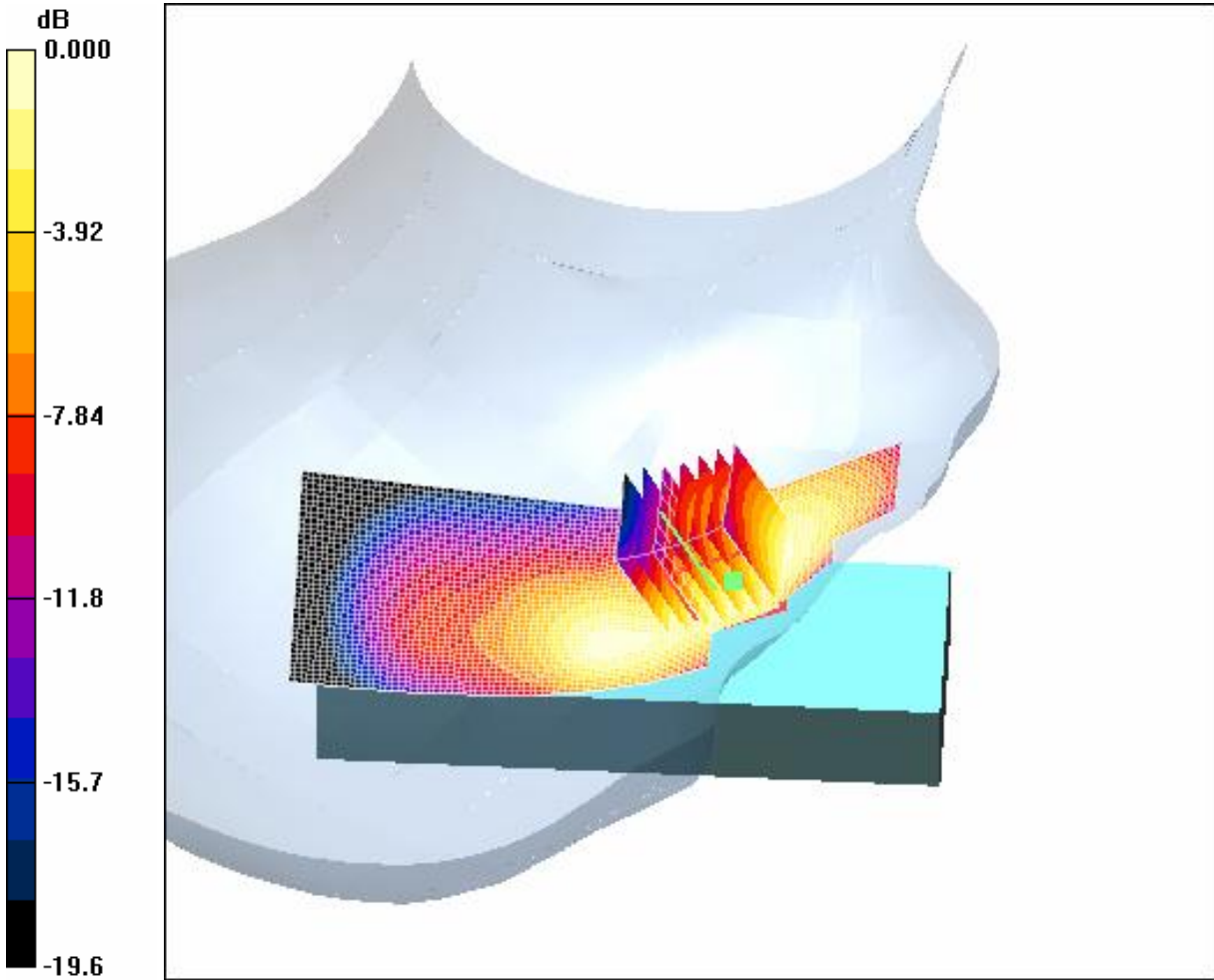
Reference Value = 3.34 V/m; Power Drift = -0.117 dB

Peak SAR (extrapolated) = 0.249 W/kg

SAR(1 g) = 0.180 mW/g; SAR(10 g) = 0.117 mW/g

[Info: Interpolated medium parameters used for SAR evaluation.](#)

Maximum value of SAR (measured) = 0.198 mW/g



0 dB = 0.198mW/g

4.23 RightHandSide-Cheek-PCS1900-Middle

Date/Time: 2006-6-4 1:43:10

Test Laboratory: SGS-GSM

RightHandSide-Cheek-PCS1900-mid

DUT: GSM10000066; Type: GSM Dual-Band Mobile Phone; Serial: 01094500000509

Communication System: PCS 1900; Frequency: 1880 MHz; Duty Cycle: 1:8.3

Medium: Head PCS 1900 Medium parameters used: $f = 1880$ MHz; $\sigma = 1.41$ mho/m; $\epsilon_r = 39.5$; $\rho = 1000$ kg/m³

Phantom section: Right Section

Measurement Standard: DASYS4 (High Precision Assessment)

DASY4 Configuration:

- Probe: ES3DV3 - SN3088; ConvF(5.91, 5.91, 5.91); Calibrated: 2005-9-13
- Sensor-Surface: 4mm (Mechanical Surface Detection)
- Electronics: DAE3 Sn569; Calibrated: 2005-11-17
- Phantom: SAM 12; Type: SAM V4.0; Serial: TP-1283
- Measurement SW: DASYS4, V4.6 Build 23; Postprocessing SW: SEMCAD, V1.8 Build 160

PCS 1900 Right Cheek M/Area Scan (41x111x1): Measurement grid: dx=15mm, dy=15mm

Maximum value of SAR (interpolated) = 0.206 mW/g

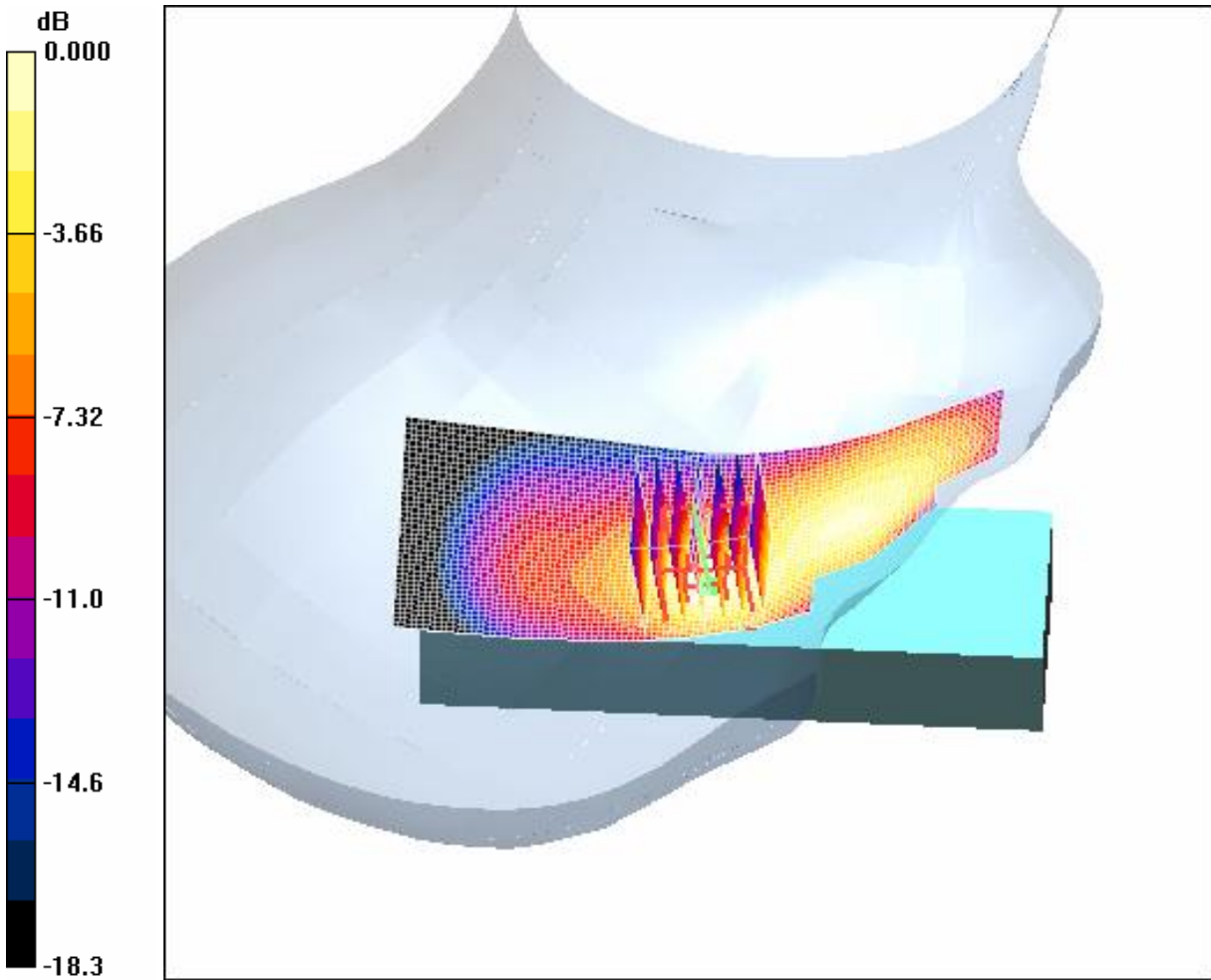
PCS 1900 Right Cheek M/Zoom Scan (7x7x7)/Cube 0: Measurement grid: dx=5mm, dy=5mm, dz=5mm

Reference Value = 3.65 V/m; Power Drift = -0.110 dB

Peak SAR (extrapolated) = 0.303 W/kg

SAR(1 g) = 0.187 mW/g; SAR(10 g) = 0.103 mW/g

Maximum value of SAR (measured) = 0.213 mW/g



0 dB = 0.213mW/g

4.24 RightHandSide-Cheek-PCS1900-High

Date/Time: 2006-6-4 0:57:32

Test Laboratory: SGS-GSM

RightHandSide-Cheek-PCS1900-high

DUT: GSM10000066; Type: GSM Dual-Band Mobile Phone; Serial: 010945000000509

Communication System: PCS 1900; Frequency: 1909.8 MHz; Duty Cycle: 1:8.3

Medium: Head PCS 1900 Medium parameters used: $f = 1910$ MHz; $\sigma = 1.43$ mho/m; $\epsilon_r = 39.4$; $\rho = 1000$ kg/m³

Phantom section: Right Section

Measurement Standard: DASY4 (High Precision Assessment)

DASY4 Configuration:

- Probe: ES3DV3 - SN3088; ConvF(5.91, 5.91, 5.91); Calibrated: 2005-9-13
- Sensor-Surface: 4mm (Mechanical Surface Detection)
- Electronics: DAE3 Sn569; Calibrated: 2005-11-17
- Phantom: SAM 12; Type: SAM V4.0; Serial: TP-1283
- Measurement SW: DASY4, V4.6 Build 23; Postprocessing SW: SEMCAD, V1.8 Build 160

PCS 1900 Right Cheek H/Area Scan (41x111x1): Measurement grid: dx=15mm, dy=15mm

Maximum value of SAR (interpolated) = 0.314 mW/g

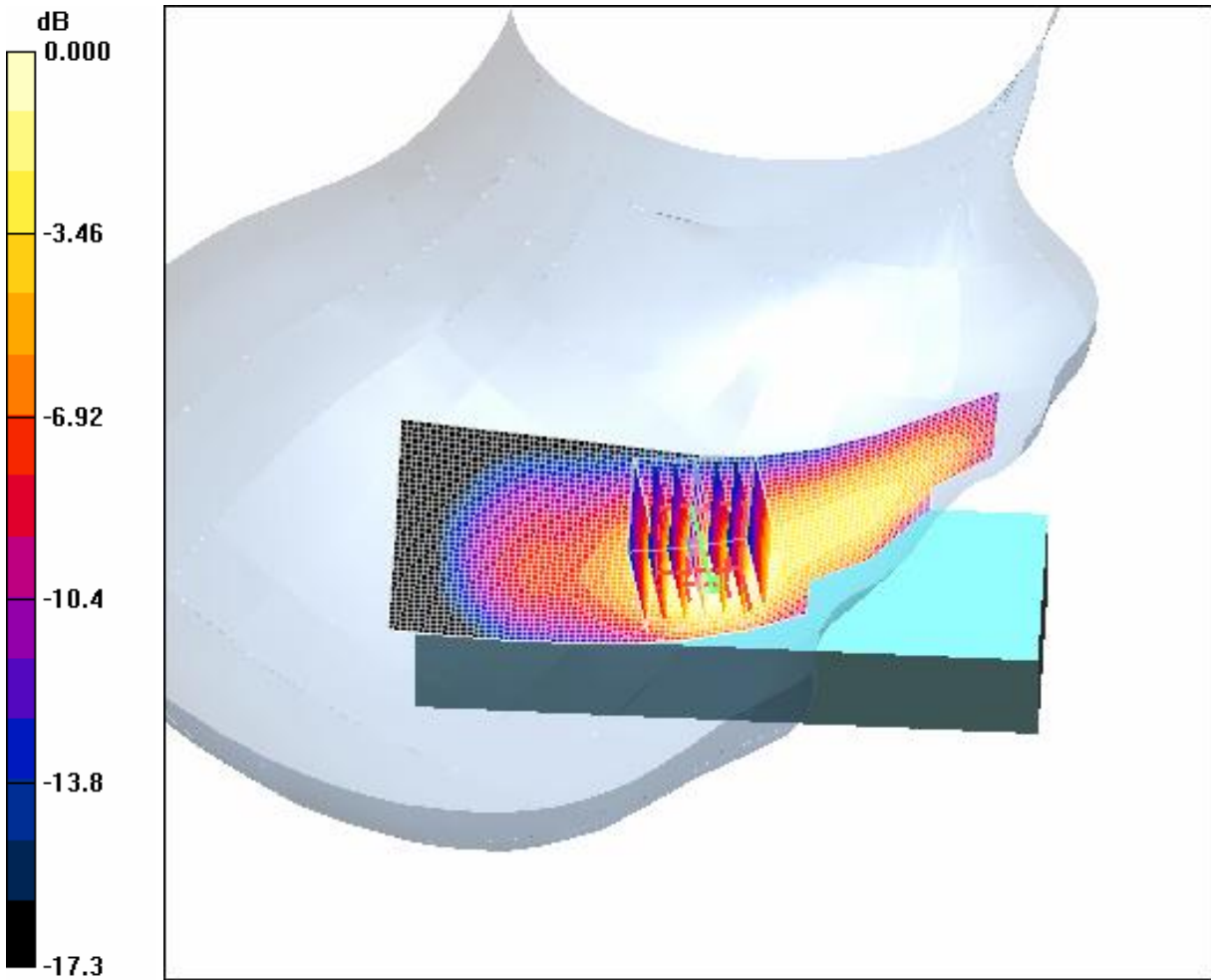
PCS 1900 Right Cheek H/Zoom Scan (7x7x7)/Cube 0: Measurement grid: dx=5mm, dy=5mm, dz=5mm

Reference Value = 4.49 V/m; Power Drift = -0.090 dB

Peak SAR (extrapolated) = 0.438 W/kg

SAR(1 g) = 0.275 mW/g; SAR(10 g) = 0.152 mW/g

Maximum value of SAR (measured) = 0.308 mW/g



0 dB = 0.308mW/g

4.25 RightHandSide-Tilt-PCS1900-Low

Date/Time: 2006-6-4 2:22:04

Test Laboratory: SGS-GSM

RightHandSide-Tilt-PCS1900-low

DUT: GSM10000066; Type: GSM Dual-Band Mobile Phone; Serial: 010945000000509

Communication System: PCS 1900; Frequency: 1850.2 MHz; Duty Cycle: 1:8.3

Medium: Head PCS 1900 Medium parameters used (interpolated): $f = 1850.2$ MHz; $\sigma = 1.38$ mho/m; $\epsilon_r = 39.6$; $\rho = 1000$ kg/m³

Phantom section: Right Section

Measurement Standard: DASYS4 (High Precision Assessment)

DASY4 Configuration:

- Probe: ES3DV3 - SN3088; ConvF(5.91, 5.91, 5.91); Calibrated: 2005-9-13
- Sensor-Surface: 4mm (Mechanical Surface Detection)
- Electronics: DAE3 Sn569; Calibrated: 2005-11-17
- Phantom: SAM 12; Type: SAM V4.0; Serial: TP-1283
- Measurement SW: DASYS4, V4.6 Build 23; Postprocessing SW: SEMCAD, V1.8 Build 160

PCS 1900 Right Tilt L/Area Scan (41x111x1): Measurement grid: dx=15mm, dy=15mm

[Info: Interpolated medium parameters used for SAR evaluation.](#)

Maximum value of SAR (interpolated) = 0.090 mW/g

PCS 1900 Right Tilt L/Zoom Scan (7x7x7)/Cube 0: Measurement grid: dx=5mm, dy=5mm, dz=5mm

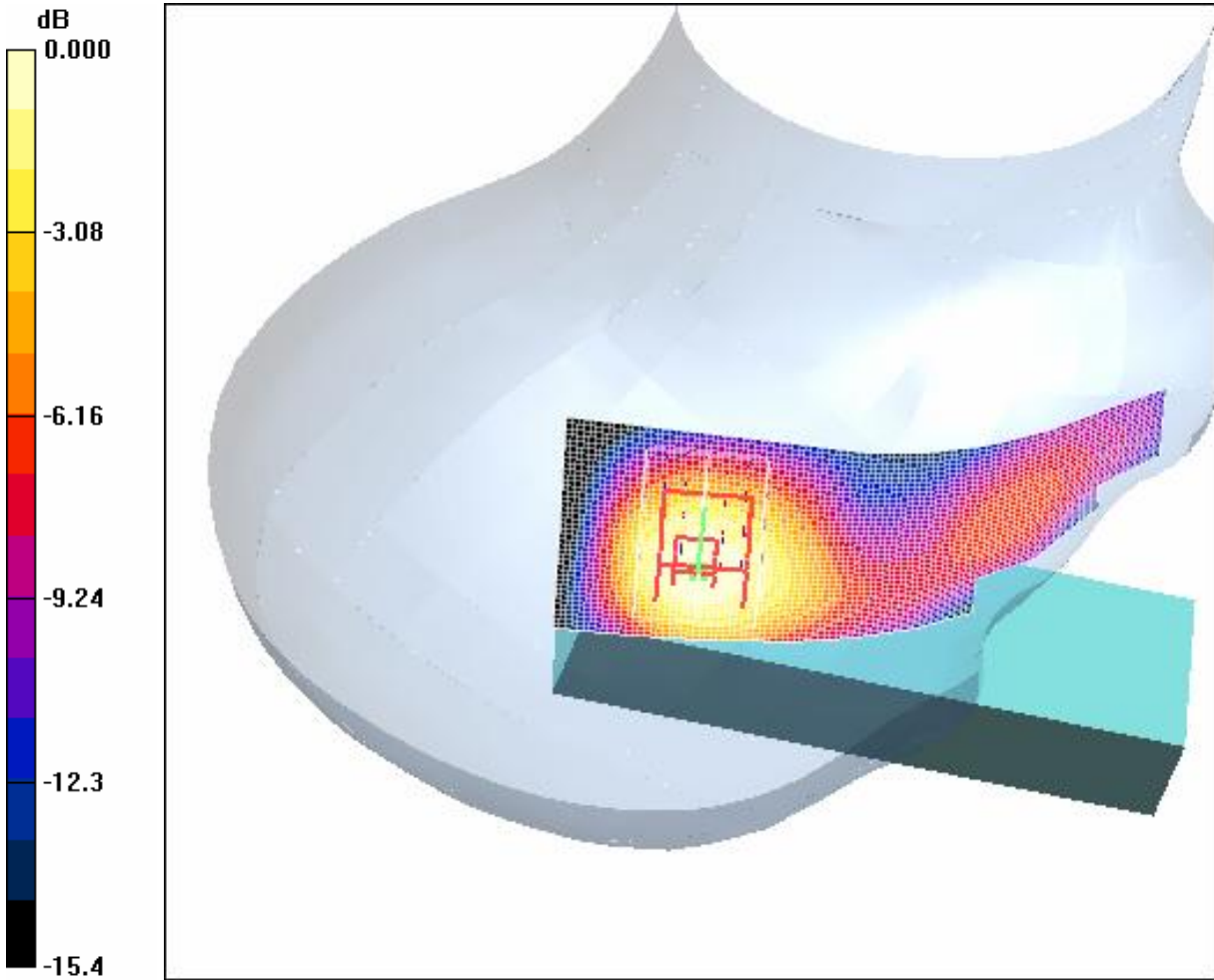
Reference Value = 5.99 V/m; Power Drift = 0.011 dB

Peak SAR (extrapolated) = 0.097 W/kg

SAR(1 g) = 0.074 mW/g; SAR(10 g) = 0.047 mW/g

[Info: Interpolated medium parameters used for SAR evaluation.](#)

Maximum value of SAR (measured) = 0.081 mW/g



0 dB = 0.081mW/g

4.26 RightHandSide-Tilt-PCS1900-Middle

Date/Time: 2006-6-4 3:00:23

Test Laboratory: SGS-GSM

RightHandSide-Tilt-PCS1900-mid

DUT: GSM10000066; Type: GSM Dual-Band Mobile Phone; Serial: 01094500000509

Communication System: PCS 1900; Frequency: 1880 MHz; Duty Cycle: 1:8.3

Medium: Head PCS 1900 Medium parameters used: $f = 1880$ MHz; $\sigma = 1.41$ mho/m; $\epsilon_r = 39.5$; $\rho = 1000$ kg/m³

Phantom section: Right Section

Measurement Standard: DASY4 (High Precision Assessment)

DASY4 Configuration:

- Probe: ES3DV3 - SN3088; ConvF(5.91, 5.91, 5.91); Calibrated: 2005-9-13
- Sensor-Surface: 4mm (Mechanical Surface Detection)
- Electronics: DAE3 Sn569; Calibrated: 2005-11-17
- Phantom: SAM 12; Type: SAM V4.0; Serial: TP-1283
- Measurement SW: DASY4, V4.6 Build 23; Postprocessing SW: SEMCAD, V1.8 Build 160

PCS 1900 Right Tilt M/Area Scan (41x111x1): Measurement grid: dx=15mm, dy=15mm

Maximum value of SAR (interpolated) = 0.145 mW/g

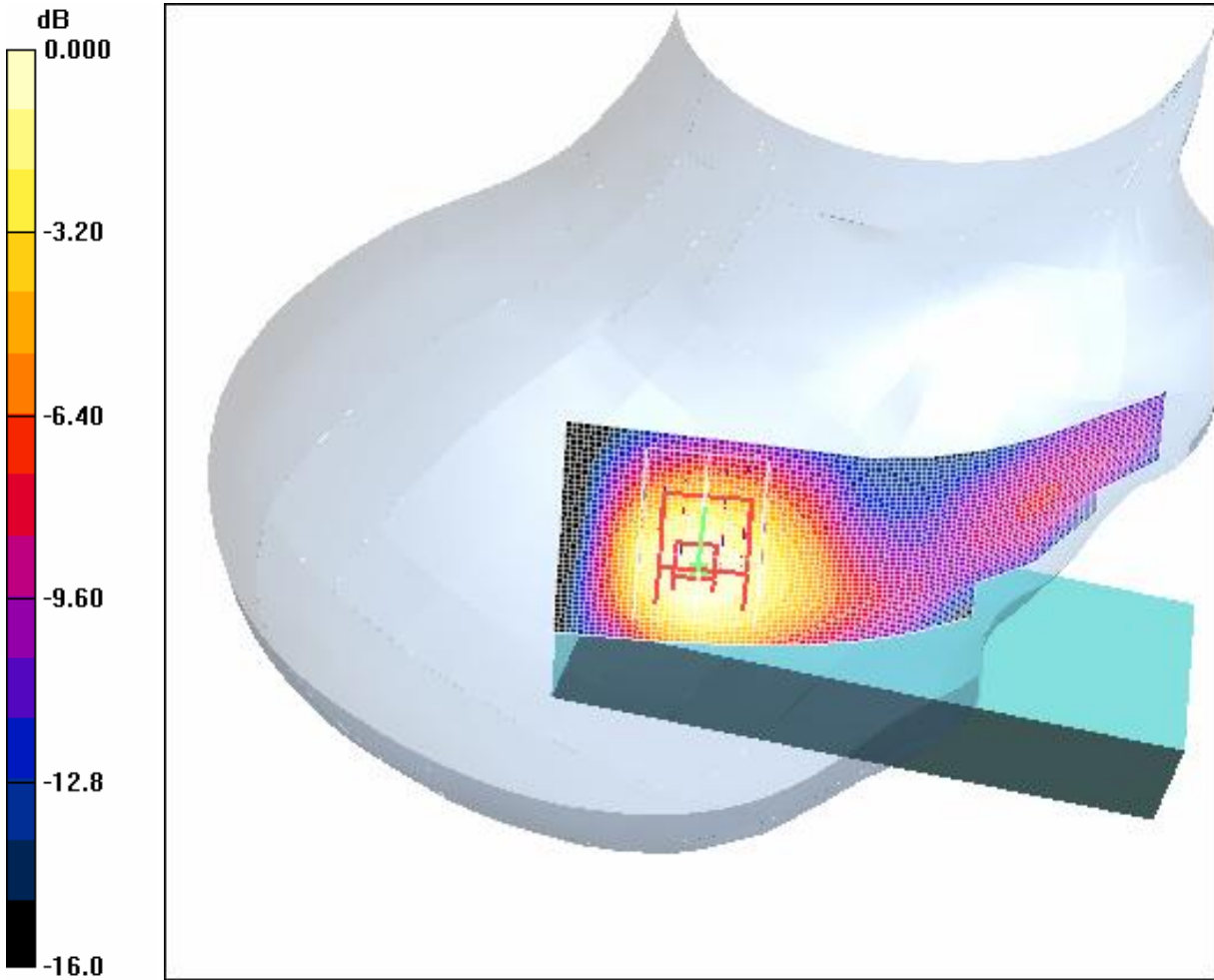
PCS 1900 Right Tilt M/Zoom Scan (7x7x7)/Cube 0: Measurement grid: dx=5mm, dy=5mm, dz=5mm

Reference Value = 7.47 V/m; Power Drift = -0.052 dB

Peak SAR (extrapolated) = 0.154 W/kg

SAR(1 g) = 0.117 mW/g; SAR(10 g) = 0.074 mW/g

Maximum value of SAR (measured) = 0.128 mW/g



0 dB = 0.128mW/g

4.27 RightHandSide-Tilt-PCS1900-High

Date/Time: 2006-6-4 3:19:07

Test Laboratory: SGS-GSM

RightHandSide-Tilt-PCS1900-high

DUT: GSM10000066; Type: GSM Dual-Band Mobile Phone; Serial: 01094500000509

Communication System: PCS 1900; Frequency: 1909.8 MHz; Duty Cycle: 1:8.3

Medium: Head PCS 1900 Medium parameters used: $f = 1910$ MHz; $\sigma = 1.43$ mho/m; $\epsilon_r = 39.4$; $\rho = 1000$ kg/m³

Phantom section: Right Section

Measurement Standard: DASY4 (High Precision Assessment)

DASY4 Configuration:

- Probe: ES3DV3 - SN3088; ConvF(5.91, 5.91, 5.91); Calibrated: 2005-9-13
- Sensor-Surface: 4mm (Mechanical Surface Detection)
- Electronics: DAE3 Sn569; Calibrated: 2005-11-17
- Phantom: SAM 12; Type: SAM V4.0; Serial: TP-1283
- Measurement SW: DASY4, V4.6 Build 23; Postprocessing SW: SEMCAD, V1.8 Build 160

PCS 1900 Right Tilt H/Area Scan (41x111x1): Measurement grid: dx=15mm, dy=15mm

Maximum value of SAR (interpolated) = 0.177 mW/g

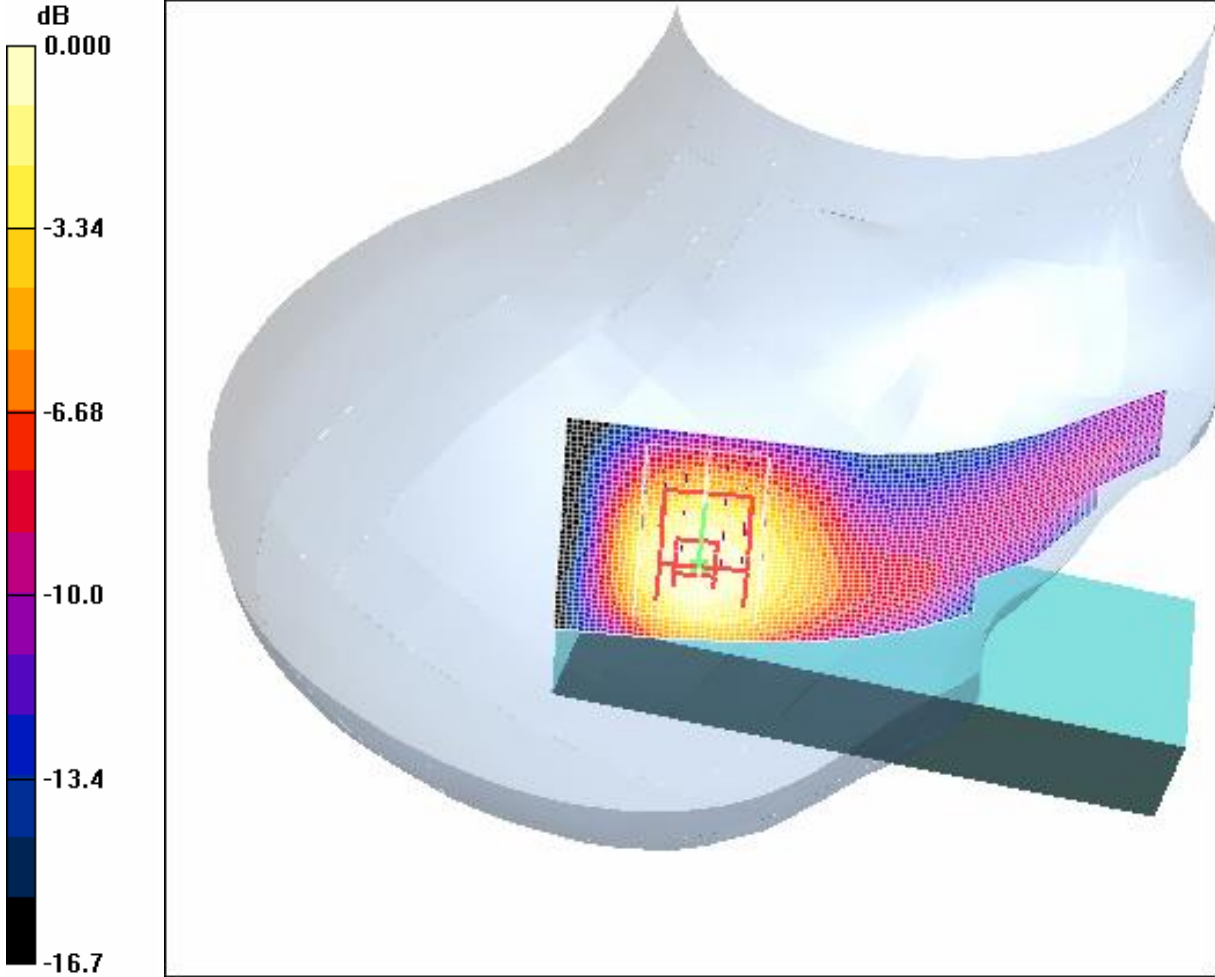
PCS 1900 Right Tilt H/Zoom Scan (7x7x7)/Cube 0: Measurement grid: dx=5mm, dy=5mm, dz=5mm

Reference Value = 8.19 V/m; Power Drift = -0.020 dB

Peak SAR (extrapolated) = 0.192 W/kg

SAR(1 g) = 0.143 mW/g; SAR(10 g) = 0.089 mW/g

Maximum value of SAR (measured) = 0.156 mW/g



0 dB = 0.156mW/g

4.28 Body-Worn-PCS1900-Low

Date/Time: 2006-6-4 0:14:09

Test Laboratory: SGS-GSM

BodyWorn-PCS1900-low

DUT: GSM10000066; Type: GSM Dual-Band Mobile Phone; Serial: 01094500000509

Communication System: PCS 1900; Frequency: 1850.2 MHz; Duty Cycle: 1:8.3

Medium: Body PCS 1900 Medium parameters used (interpolated): $f = 1850.2$ MHz; $\sigma = 1.48$ mho/m; $\epsilon_r = 56$; $\rho = 1000$ kg/m³

Phantom section: Flat Section

Measurement Standard: DASY4 (High Precision Assessment)

DASY4 Configuration:

- Probe: ES3DV3 - SN3088; ConvF(5.91, 5.91, 5.91); Calibrated: 2005-9-13
- Sensor-Surface: 4mm (Mechanical Surface Detection)
- Electronics: DAE3 Sn569; Calibrated: 2005-11-17
- Phantom: SAM 12; Type: SAM V4.0; Serial: TP-1283
- Measurement SW: DASY4, V4.6 Build 23; Postprocessing SW: SEMCAD, V1.8 Build 160

PCS 1900 Display toward the ground Flat L/Area Scan (51x111x1): Measurement grid:
dx=15mm, dy=15mm

[Info: Interpolated medium parameters used for SAR evaluation.](#)

Maximum value of SAR (interpolated) = 0.444 mW/g

PCS 1900 Display toward the ground Flat L/Zoom Scan (7x7x7)/Cube 0: Measurement grid:
dx=5mm, dy=5mm, dz=5mm

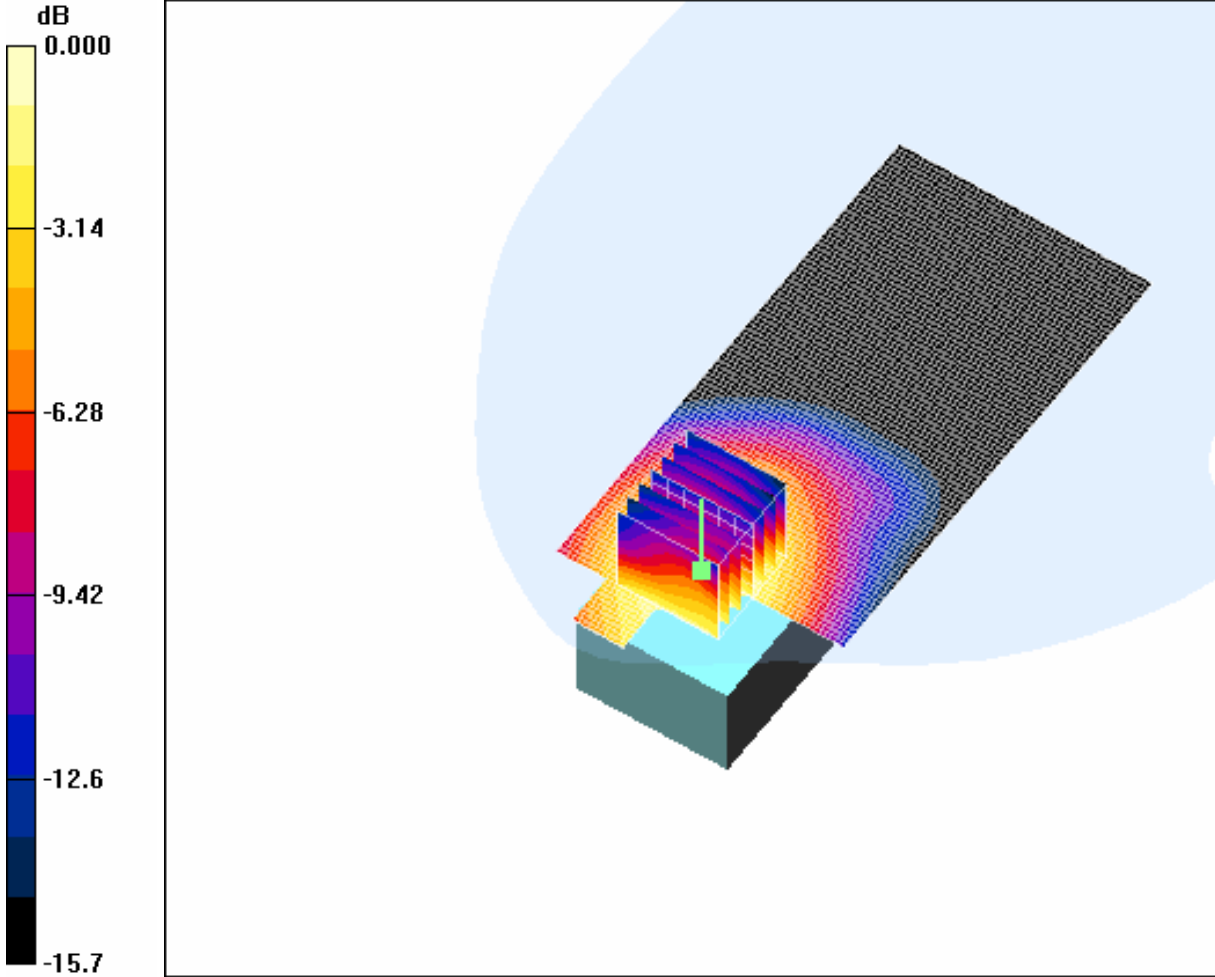
Reference Value = 1.69 V/m; Power Drift = 0.115 dB

Peak SAR (extrapolated) = 0.625 W/kg

SAR(1 g) = 0.410 mW/g; SAR(10 g) = 0.253 mW/g

[Info: Interpolated medium parameters used for SAR evaluation.](#)

Maximum value of SAR (measured) = 0.443 mW/g



0 dB = 0.443mW/g

4.29 Body-Worn-PCS1900-Middle

Date/Time: 2006-6-3 23:18:11

Test Laboratory: SGS-GSM

BodyWorn-PCS1900-mid

DUT: GSM10000066; Type: GSM Dual-Band Mobile Phone; Serial: 01094500000509

Communication System: PCS 1900; Frequency: 1880 MHz; Duty Cycle: 1:8.3

Medium: Body PCS 1900 Medium parameters used: $f = 1880$ MHz; $\sigma = 1.52$ mho/m; $\epsilon_r = 55.9$; $\rho = 1000$ kg/m³

Phantom section: Flat Section

Measurement Standard: DASY4 (High Precision Assessment)

DASY4 Configuration:

- Probe: ES3DV3 - SN3088; ConvF(5.91, 5.91, 5.91); Calibrated: 2005-9-13
- Sensor-Surface: 4mm (Mechanical Surface Detection)
- Electronics: DAE3 Sn569; Calibrated: 2005-11-17
- Phantom: SAM 12; Type: SAM V4.0; Serial: TP-1283
- Measurement SW: DASY4, V4.6 Build 23; Postprocessing SW: SEMCAD, V1.8 Build 160

PCS 1900 Display toward the ground Flat M/Area Scan (51x111x1): Measurement grid:

$dx=15$ mm, $dy=15$ mm

Maximum value of SAR (interpolated) = 0.420 mW/g

PCS 1900 Display toward the ground Flat M/Zoom Scan (7x7x7)/Cube 0: Measurement grid:

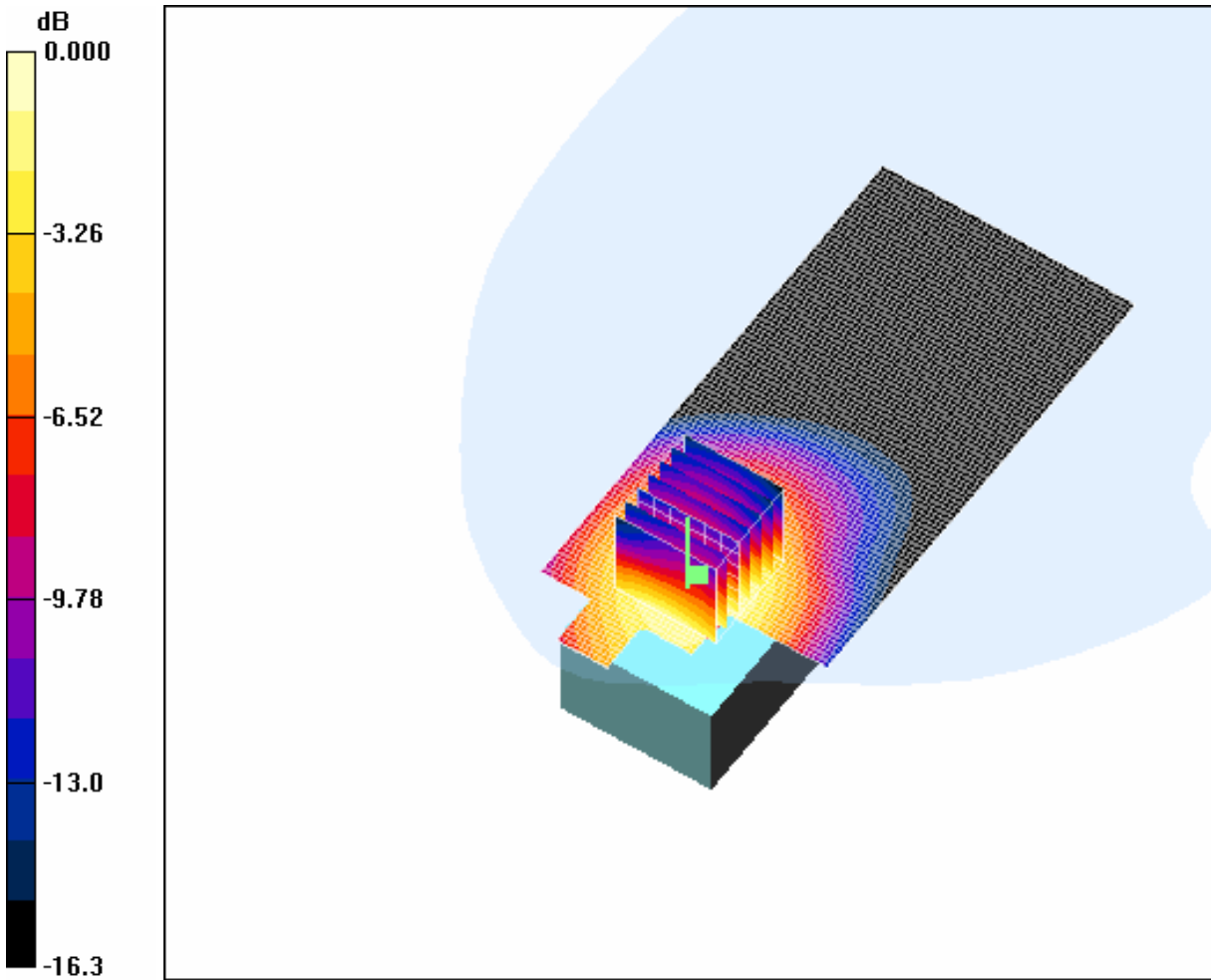
$dx=5$ mm, $dy=5$ mm, $dz=5$ mm

Reference Value = 1.55 V/m; Power Drift = -0.062 dB

Peak SAR (extrapolated) = 0.589 W/kg

SAR(1 g) = 0.382 mW/g; SAR(10 g) = 0.235 mW/g

Maximum value of SAR (measured) = 0.411 mW/g



0 dB = 0.411mW/g

4.30 Body-Worn-PCS1900-High

Date/Time: 2006-6-3 22:54:42

Test Laboratory: SGS-GSM

BodyWorn-PCS1900-high

DUT: GSM10000066; Type: GSM Dual-Band Mobile Phone; Serial: 01094500000509

Communication System: PCS 1900; Frequency: 1909.8 MHz; Duty Cycle: 1:8.3

Medium: Body PCS 1900 Medium parameters used (interpolated): $f = 1909.8$ MHz; $\sigma = 1.56$ mho/m; $\epsilon_r = 55.8$; $\rho = 1000$ kg/m³

Phantom section: Flat Section

Measurement Standard: DASY4 (High Precision Assessment)

DASY4 Configuration:

- Probe: ES3DV3 - SN3088; ConvF(5.91, 5.91, 5.91); Calibrated: 2005-9-13
- Sensor-Surface: 4mm (Mechanical Surface Detection)
- Electronics: DAE3 Sn569; Calibrated: 2005-11-17
- Phantom: SAM 12; Type: SAM V4.0; Serial: TP-1283
- Measurement SW: DASY4, V4.6 Build 23; Postprocessing SW: SEMCAD, V1.8 Build 160

PCS 1900 Display toward the ground Flat H/Area Scan (51x111x1): Measurement grid:
dx=15mm, dy=15mm

[Info: Interpolated medium parameters used for SAR evaluation.](#)

Maximum value of SAR (interpolated) = 0.359 mW/g

PCS 1900 Display toward the ground Flat H/Zoom Scan (7x7x7)/Cube 0: Measurement grid:
dx=5mm, dy=5mm, dz=5mm

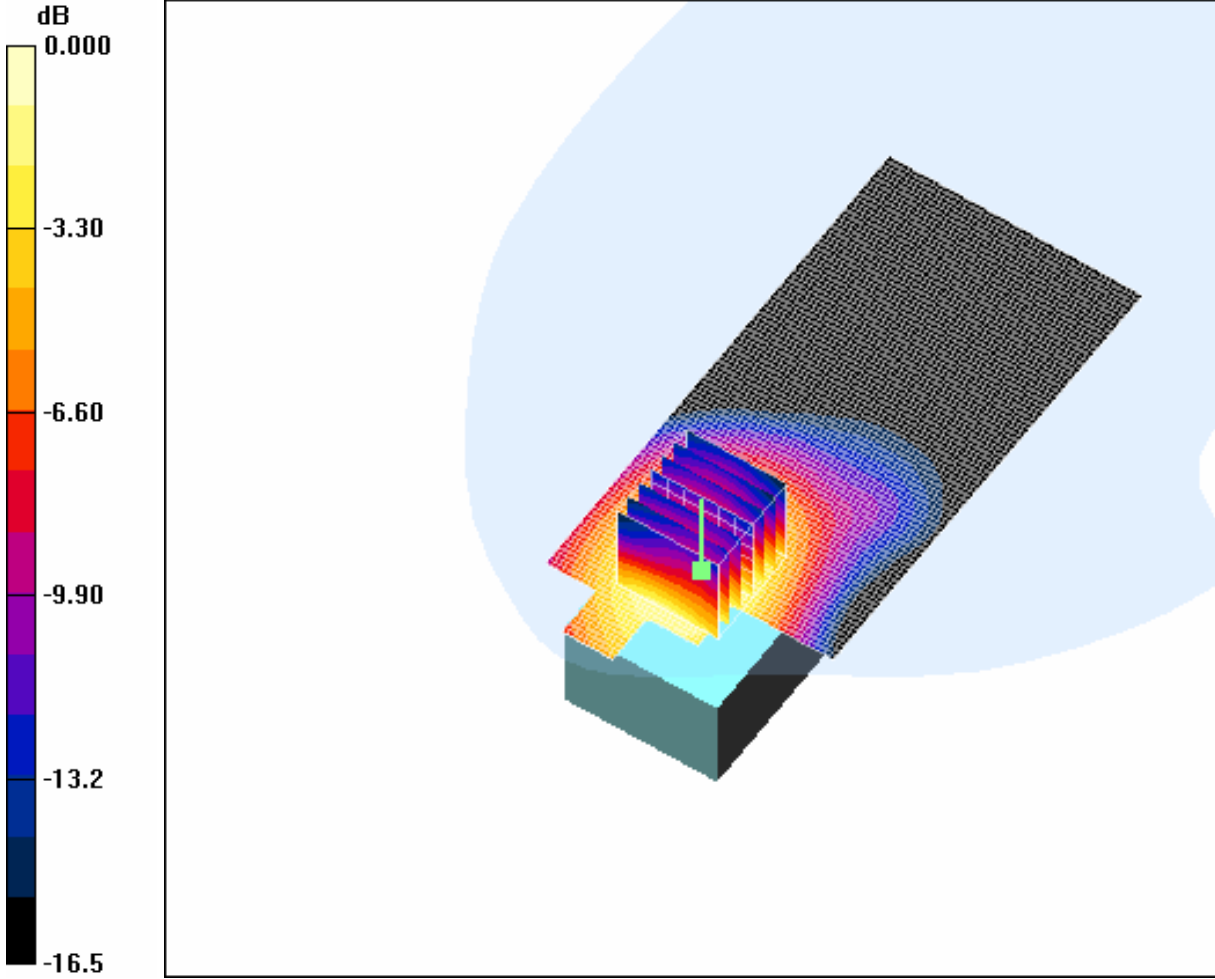
Reference Value = 2.23 V/m; Power Drift = -0.134 dB

Peak SAR (extrapolated) = 0.511 W/kg

SAR(1 g) = 0.326 mW/g; SAR(10 g) = 0.197 mW/g

[Info: Interpolated medium parameters used for SAR evaluation.](#)

Maximum value of SAR (measured) = 0.351 mW/g



0 dB = 0.351mW/g

Appendix

1. Photographs of Test Setup

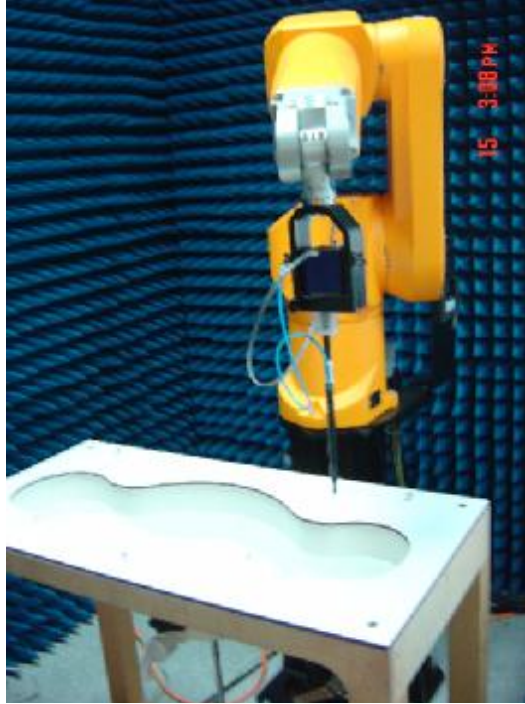


Fig.1 Photograph of the SAR measurement System

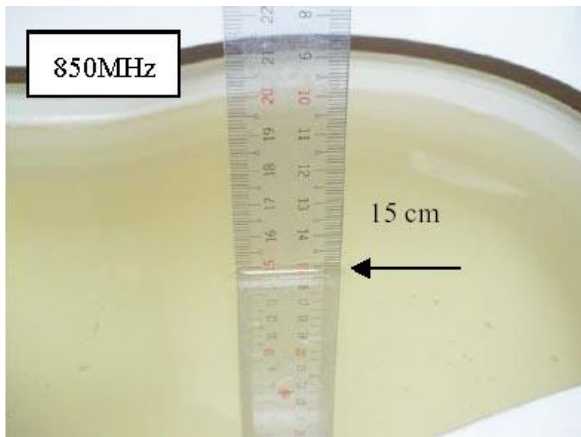


Fig.2 Photograph of the Tissue Simulant Fluid Liquid depth 15cm for Left-Head Side

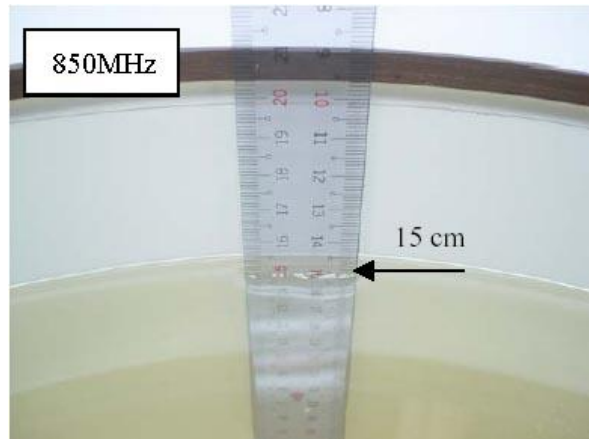


Fig.3 Photograph of the Tissue Simulant Liquid depth 15cm for Body-Worn

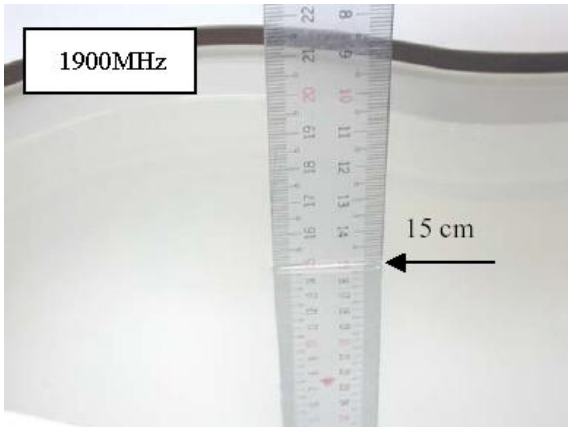


Fig.4 Photograph of the Tissue Simulant Fluid Liquid depth 15cm for Right-Head Side

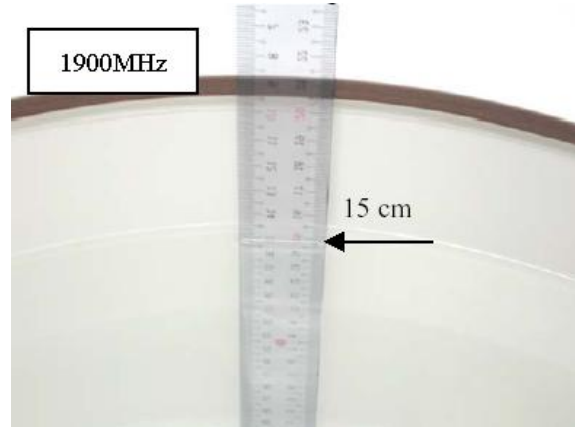


Fig.5 Photograph of the Tissue Simulant Liquid depth 15cm for Body-Worn

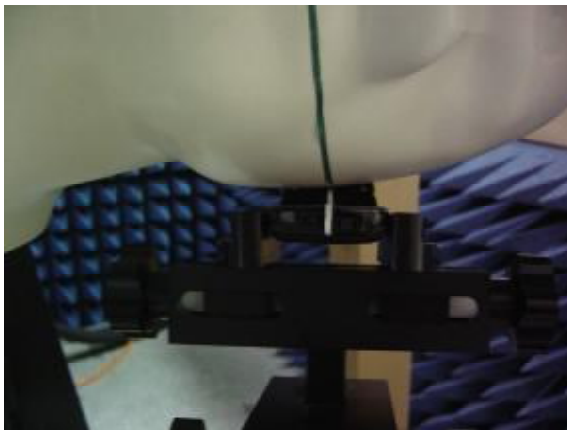


Fig.6 Photograph of the Left Hand Side Cheek

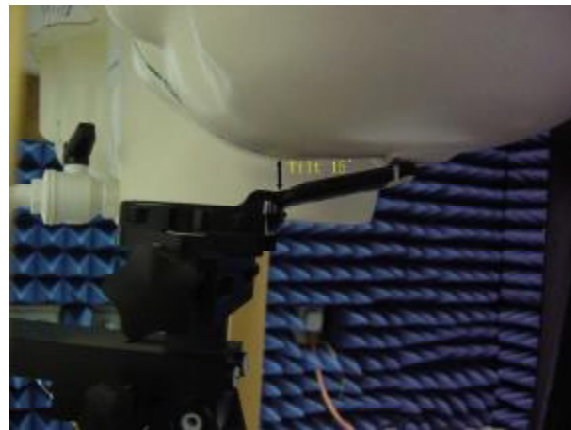
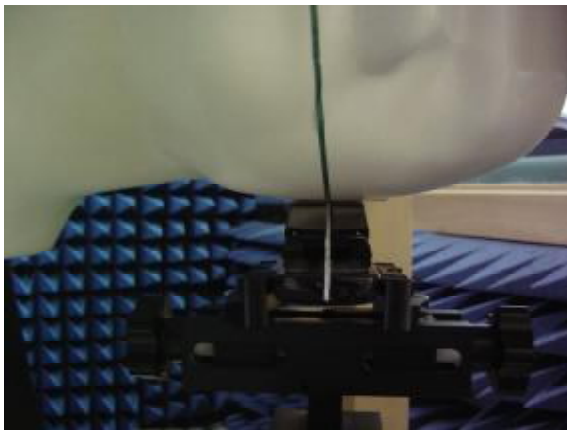
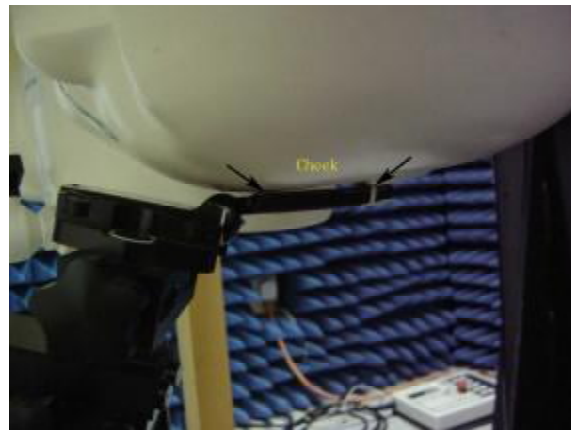


Fig.7 Photograph of the Left Hand Side Tilt



Fig.8 Photograph of the Right Hand Side Cheek

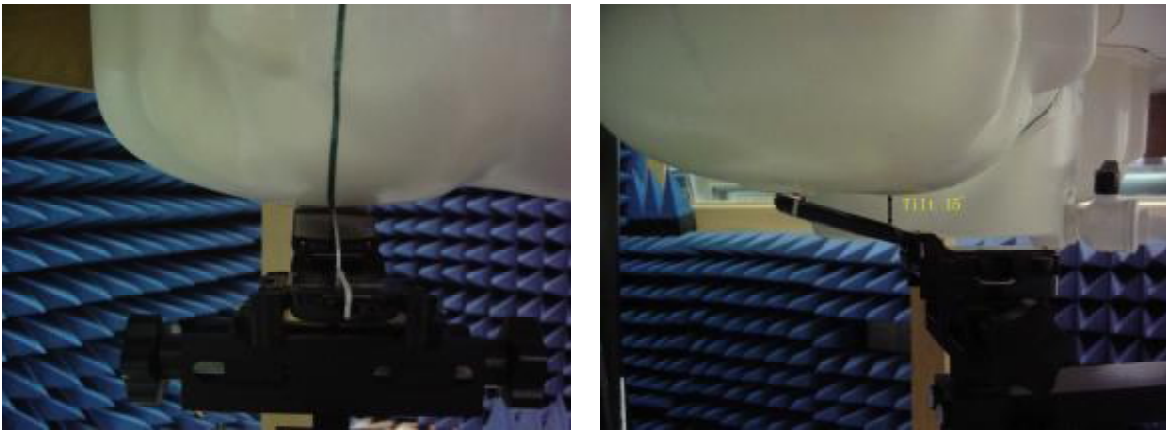


Fig.9 Photograph of the Right Hand Side Tilt

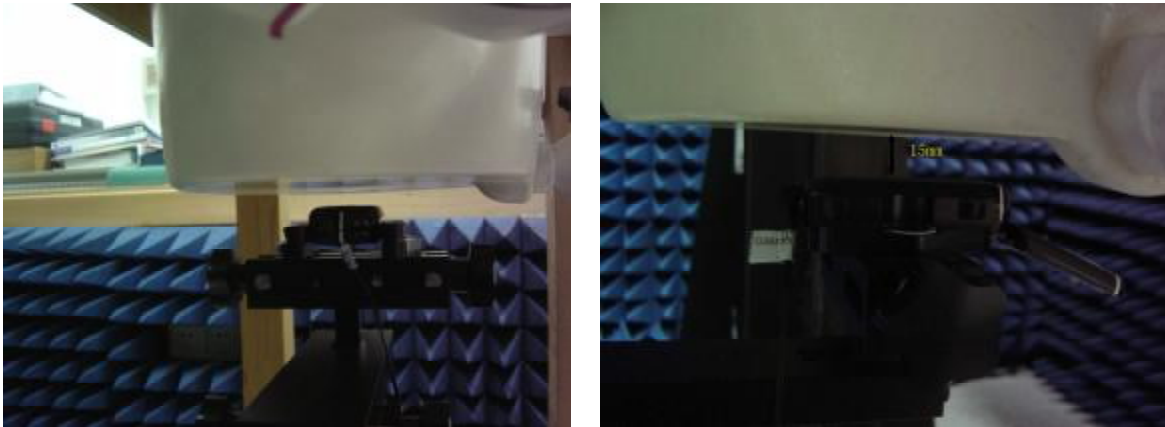


Fig.10 Photograph of the BodyWorn

2. Photographs of the EUT



Fig.11 Front View



Fig.12 Back View

3. Photographs of the battery



Fig.13 Front view of battery

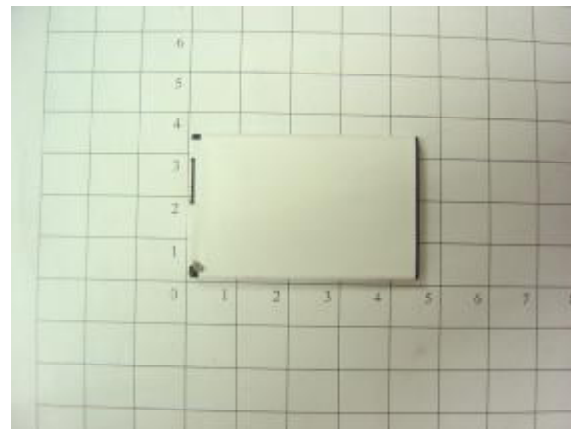


Fig.14 Back view of battery

4. Photograph of the charger



Fig.15 Charger

5. Probe Calibration certificate

**Calibration Laboratory of
 Schmid & Partner
 Engineering AG**
 Zeughausstrasse 43, 8004 Zurich, Switzerland



S Schweizerischer Kalibrierdienst
S Service suisse d'étalonnage
C Servizio svizzero di taratura
S Swiss Calibration Service

Accredited by the Swiss Federal Office of Metrology and Accreditation
 The Swiss Accreditation Service is one of the signatories to the EA
 Multilateral Agreement for the recognition of calibration certificates

Accreditation No.: **SCS 108**

Client **SGS-CSTS (MTT)**

Certificate No: **ES3-3088_Sep05**

CALIBRATION CERTIFICATE

Object: **ES3DV3 - SN.3088**

Calibration procedure(s): **QA CAL-01.v5
 Calibration procedure for dosimetric E-field probes**

Calibration date: **September 13, 2005**

Condition of the calibrated item: **In Tolerance**

This calibration certificate documents the traceability to national standards, which realize the physical units of measurements (SI).
 The measurements and the uncertainties with confidence probability are given on the following pages and are part of the certificate.

All calibrations have been conducted in the closed laboratory facility; environment temperature (22 ± 3)°C and humidity < 70%.

Calibration Equipment used (M&TE critical for calibration)

Primary Standards	ID #	Cal Date (Calibrated by, Certificate No.)	Scheduled Calibration
Power meter E4419B	GB41293874	3-May-05 (METAS, No. 251-00466)	May-06
Power sensor E4412A	MY41495277	3-May-05 (METAS, No. 251-00466)	May-06
Power sensor E4412A	MY41498987	3-May-05 (METAS, No. 251-00466)	May-06
Reference 3 dB Attenuator	SN: S5054 (3c)	11-Aug-05 (METAS, No. 251-00499)	Aug-06
Reference 20 dB Attenuator	SN: S5086 (20b)	3-May-05 (METAS, No. 251-00467)	May-06
Reference 30 dB Attenuator	SN: S5129 (30b)	11-Aug-05 (METAS, No. 251-00500)	Aug-06
Reference Probe ES3DV2	SN: 3013	7-Jan-05 (SPEAG, No. ES3-3013_Jan05)	Jan-06
DAE4	SN: 654	29-Nov-04 (SPEAG, No. DAE4-654_Nov04)	Nov-05

Secondary Standards	ID #	Check Date (in house)	Scheduled Check
RF generator HP 8648C	US3642U01700	4-Aug-06 (SPEAG, in house check Dec-03)	In house check: Dec-05
Network Analyzer HP 8753E	US37390585	18-Oct-01 (SPEAG, in house check Nov-04)	In house check: Nov-05

Calibrated by:	Nico Vetterli	Function Laboratory Technician	Signature
Approved by:	Katja Pokovic	Technical Manager	

Issued: September 15, 2005

This calibration certificate shall not be reproduced except in full without written approval of the laboratory.

Calibration Laboratory of
Schmid & Partner
Engineering AG
Zeughausstrasse 43, 8004 Zurich, Switzerland



S Schweizerischer Kalibrierdienst
C Service suisse d'étalonnage
S Servizio svizzero di taratura
S Swiss Calibration Service

Accredited by the Swiss Federal Office of Metrology and Accreditation
The Swiss Accreditation Service is one of the signatories to the EA
Multilateral Agreement for the recognition of calibration certificates

Accreditation No.: **SCS 108**

Glossary:

TSL	tissue simulating liquid
NORM _{x,y,z}	sensitivity in free space
ConF	sensitivity in TSL / NORM _{x,y,z}
DCP	diode compression point
Polarization φ	φ rotation around probe axis
Polarization ϑ	ϑ rotation around an axis that is in the plane normal to probe axis (at measurement center), i.e., $\vartheta = 0$ is normal to probe axis

Calibration is Performed According to the Following Standards:

- IEEE Std 1528-2003, "IEEE Recommended Practice for Determining the Peak Spatial-Averaged Specific Absorption Rate (SAR) in the Human Head from Wireless Communications Devices: Measurement Techniques", December 2003
- CENELEC EN 50361, "Basic standard for the measurement of Specific Absorption Rate related to human exposure to electromagnetic fields from mobile phones (300 MHz - 3 GHz), July 2001

Methods Applied and Interpretation of Parameters:

- NORM_{x,y,z}:** Assessed for E-field polarization $\vartheta = 0$ ($f \leq 900$ MHz in TEM-cell; $f > 1800$ MHz: R22 waveguide). NORM_{x,y,z} are only intermediate values, i.e., the uncertainties of NORM_{x,y,z} does not effect the E²-field uncertainty inside TSL (see below *ConvF*).
- NORM(*f*)_{x,y,z} = NORM_{x,y,z} * frequency_response** (see Frequency Response Chart). This linearization is implemented in DASY4 software versions later than 4.2. The uncertainty of the frequency response is included in the stated uncertainty of *ConvF*.
- DCP_{x,y,z}:** DCP are numerical linearization parameters assessed based on the data of power sweep (no uncertainty required). DCP does not depend on frequency nor media.
- ConvF and Boundary Effect Parameters:** Assessed in flat phantom using E-field (or Temperature Transfer Standard for $f \leq 800$ MHz) and inside waveguide using analytical field distributions based on power measurements for $f > 800$ MHz. The same setups are used for assessment of the parameters applied for boundary compensation (alpha, depth) of which typical uncertainty values are given. These parameters are used in DASY4 software to improve probe accuracy close to the boundary. The sensitivity in TSL corresponds to NORM_{x,y,z} * *ConvF* whereby the uncertainty corresponds to that given for *ConvF*. A frequency dependent *ConvF* is used in DASY version 4.4 and higher which allows extending the validity from ± 50 MHz to ± 100 MHz.
- Spherical isotropy (3D deviation from isotropy):** in a field of low gradients realized using a flat phantom exposed by a patch antenna.
- Sensor Offset:** The sensor offset corresponds to the offset of virtual measurement center from the probe tip (on probe axis). No tolerance required.

ES3DV3 SN:3088

September 13, 2005

Probe ES3DV3

SN:3088

Manufactured: July 20, 2005
Calibrated: September 13, 2005

Calibrated for DASY Systems

(Note: non-compatible with DASY2 system!)

ES3DV3 SN:3088

September 13, 2005

DASY - Parameters of Probe: ES3DV3 SN:3088

Sensitivity in Free Space^A

Diode Compression^B

NormX	1.32 ± 10.1%	$\mu\text{V}/(\text{V}/\text{m})^2$	DCP X	95 mV
NormY	1.24 ± 10.1%	$\mu\text{V}/(\text{V}/\text{m})^2$	DCP Y	95 mV
NormZ	1.23 ± 10.1%	$\mu\text{V}/(\text{V}/\text{m})^2$	DCP Z	95 mV

Sensitivity in Tissue Simulating Liquid (Conversion Factors)

Please see Page 8.

Boundary Effect

TSL	900 MHz	Typical SAR gradient: 5 % per mm		
	Sensor Center to Phantom Surface Distance		3.0 mm	4.0 mm
	SAR _{iso} [%]	Without Correction Algorithm	5.8	2.7
	SAR _{iso} [%]	With Correction Algorithm	0.0	0.1
TSL	1750 MHz	Typical SAR gradient: 10 % per mm		
	Sensor Center to Phantom Surface Distance		3.0 mm	4.0 mm
	SAR _{iso} [%]	Without Correction Algorithm	7.6	4.5
	SAR _{iso} [%]	With Correction Algorithm	0.1	0.2

Sensor Offset

Probe Tip to Sensor Center **2.0 mm**

The reported uncertainty of measurement is stated as the standard uncertainty of measurement multiplied by the coverage factor k=2, which for a normal distribution corresponds to a coverage probability of approximately 95%.

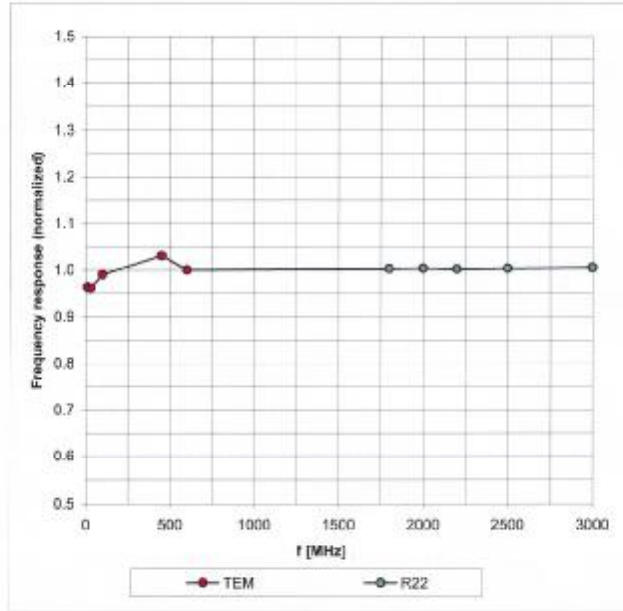
^A The uncertainties of NormX,Y,Z do not affect the E²-field uncertainty inside TSL (see Page 8).

^B Numerical linearization parameter: uncertainty not required.

ES3DV3 SN:3088

September 13, 2005

Frequency Response of E-Field (TEM-Cell:ifi110 EXX, Waveguide: R22)

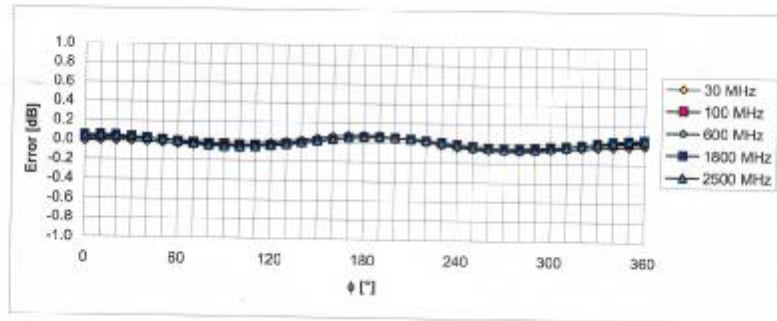
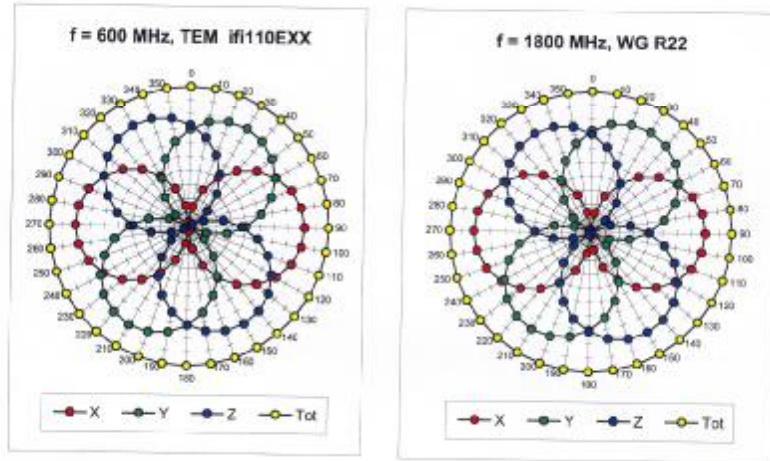


Uncertainty of Frequency Response of E-field: $\pm 6.3\%$ (k=2)

ES3DV3 SN:3088

September 13, 2005

Receiving Pattern (ϕ), $\theta = 0^\circ$

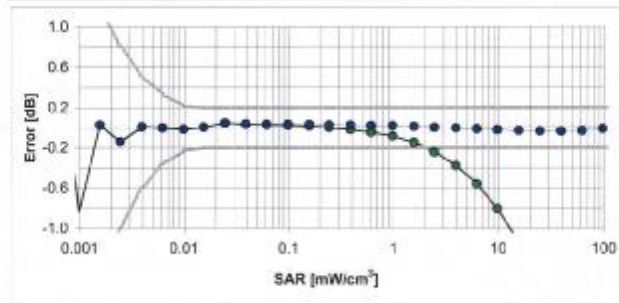
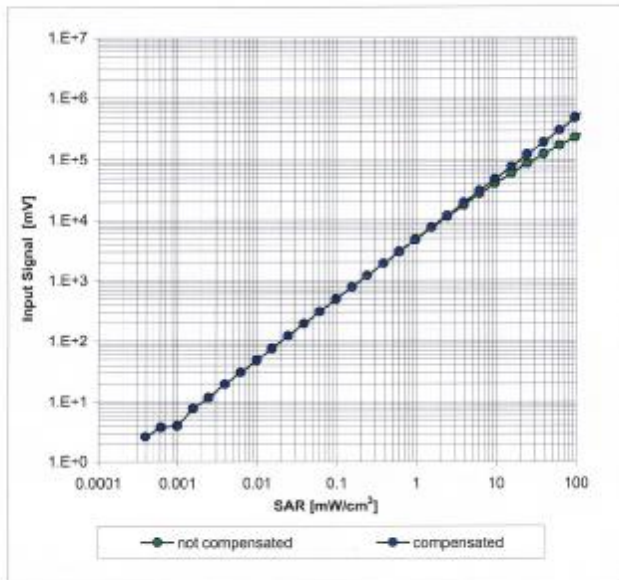


Uncertainty of Axial Isotropy Assessment: $\pm 0.5\%$ (k=2)

ES3DV3 SN:3088

September 13, 2005

Dynamic Range $f(SAR_{head})$ (Waveguide R22, $f = 1800$ MHz)

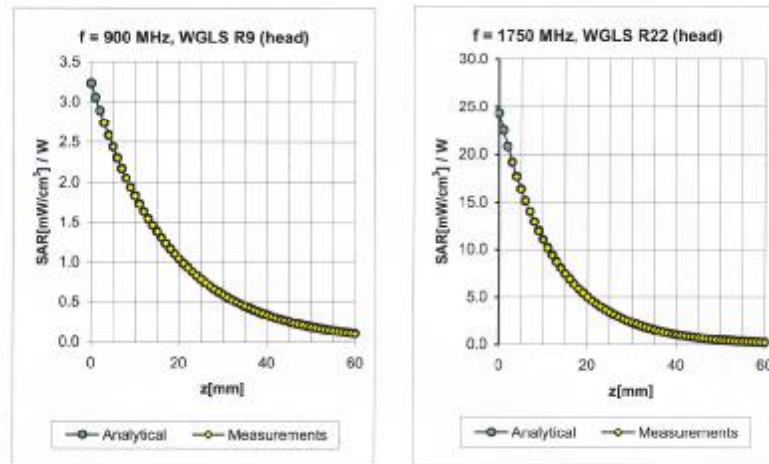


Uncertainty of Linearity Assessment: $\pm 0.6\%$ ($k=2$)

ES3DV3 SN:3088

September 13, 2005

Conversion Factor Assessment



f [MHz]	Validity [MHz] ^c	TSL	Permittivity	Conductivity	Alpha	Depth	ConvF Uncertainty
900	± 50 / ± 100	Head	41.5 ± 5%	0.97 ± 5%	0.47	1.40	5.91 ± 11.0% (k=2)
1750	± 50 / ± 100	Head	40.1 ± 5%	1.37 ± 5%	0.24	2.39	4.97 ± 11.0% (k=2)
1900	± 50 / ± 100	Head	40.0 ± 5%	1.40 ± 5%	0.27	2.28	4.93 ± 11.0% (k=2)
2000	± 50 / ± 100	Head	40.0 ± 5%	1.40 ± 5%	0.25	2.34	4.87 ± 11.0% (k=2)
900	± 50 / ± 100	Body	55.0 ± 5%	1.05 ± 5%	0.61	1.25	5.83 ± 11.0% (k=2)
1750	± 50 / ± 100	Body	53.4 ± 5%	1.49 ± 5%	0.28	2.53	4.61 ± 11.0% (k=2)
1900	± 50 / ± 100	Body	53.3 ± 5%	1.52 ± 5%	0.28	2.57	4.53 ± 11.0% (k=2)
2000	± 50 / ± 100	Body	53.3 ± 5%	1.52 ± 5%	0.32	2.11	4.47 ± 11.0% (k=2)

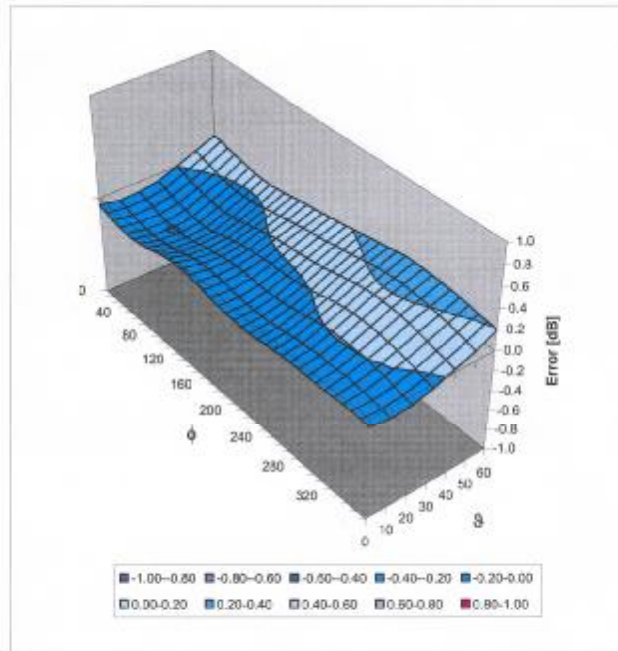
^c The validity of ± 100 MHz only applies for DASY v4.4 and higher (see Page 2). The uncertainty is the RSS of the ConvF uncertainty at calibration frequency and the uncertainty for the indicated frequency band.

ES3DV3 SN:3088

September 13, 2005

Deviation from Isotropy in HSL

Error (ϕ, θ), $f = 900$ MHz



Uncertainty of Spherical Isotropy Assessment: $\pm 2.6\%$ ($k=2$)

6. Uncertainty analysis

Error Description	Tol. (± %)	Prob. dist.	Div.	(c_i) (1g)	(c_i) (10g)	Std. unc. (± %)		(v_i)
Measurement System								
Probe Calibration	4.8	N	1	1	1	4.8	4.8	∞
Axial Isotropy	4.7	R	$\sqrt{3}$	1	1	2.7	2.7	∞
Hemispherical Isotropy	0	R	$\sqrt{3}$	1	1	0	0	∞
Boundary Effects	1.0	R	$\sqrt{3}$	1	1	0.6	0.6	∞
Linearity	4.7	R	$\sqrt{3}$	1	1	2.7	2.7	∞
System Detection Limit	1.0	R	$\sqrt{3}$	1	1	0.6	0.6	∞
Readout Electronics	1.0	N	1	1	1	1.0	1.0	∞
Response Time	0	R	$\sqrt{3}$	1	1	0	0	∞
Integration Time	0	R	$\sqrt{3}$	1	1	0	0	∞
RF Ambient Conditions	3.0	R	$\sqrt{3}$	1	1	1.7	1.7	∞
Probe Positioner	0.4	R	$\sqrt{3}$	1	1	0.2	0.2	∞
Probe Positioning	2.9	R	$\sqrt{3}$	1	1	1.7	1.7	∞
Algorithms for Max. SAR Eval.	1.0	R	$\sqrt{3}$	1	1	0.6	0.6	∞
Dipole								
Dipole Axis to Liquid Distance	2.0	R	$\sqrt{3}$	1	1	1.2	1.2	∞
Input power and SAR drift meas.	4.7	R	$\sqrt{3}$	1	1	2.7	2.7	∞
Phantom and Tissue Param.								
Phantom Uncertainty	4.0	R	$\sqrt{3}$	1	1	2.3	2.3	∞
Liquid Conductivity (target)	5.0	R.	$\sqrt{3}$	0.64	0.43	1.8	1.2	∞
Liquid Conductivity (meas.)	2.5	N	1	0.64	0.43	1.6	1.1	∞
Liquid Permittivity (target)	5.0	R	$\sqrt{3}$	0.6	0.49	1.7	1.4	∞
Liquid Permittivity (meas.)	2.5	N	1	0.6	0.49	1.5	1.2	∞
Combined Standard Uncertainty						8.4	8.1	∞
Coverage Factor for 95%		$k_p=2$						
Expanded Uncertainty						16.8	16.2	

Dasy4 Uncertainty Budget

7. Phantom description

Schmid & Partner Engineering AG

Zoehausstrasse 43, 8004 Zurich, Switzerland, Phone +41 1 245 97 00, Fax +41 1 245 97 79

Certificate of conformity / First Article Inspection

Item	SAM Twin Phantom V4.0
Type No	QD 000 P40 CA
Series No	TP-1150 and higher
Manufacturer / Origin	Unterseer Composites Hauptstr. 69 CH-8559 Fruttwilen Switzerland

Tests

The series production process used allows the limitation to test of first articles. Complete tests were made on the pre-series Type No. QD 000 P40 AA, Serial No. TP-1001 and on the series first article Type No. QD 000 P40 BA, Serial No. TP-1006. Certain parameters have been retested using further series units (called samples).

Test	Requirement	Details	Units tested
Shape	Compliance with the geometry according to the CAD model.	ITIS CAD File (*)	First article, Samples
Material thickness	Compliant with the requirements according to the standards	2mm +/- 0.2mm in specific areas	First article, Samples
Material parameters	Dielectric parameters for required frequencies	200 MHz - 3 GHz Relative permittivity < 6 Loss tangent < 0.05.	Material sample TP 104-5
Material resistivity	The material has been tested to be compatible with the liquids defined in the standards	Liquid type HSL 1800 and others according to the standard.	Pre-series, First article

Standards

- [1] CENELEC EN 50361
- [2] IEEE P1528-200x draft 6.5
- [3] IEC PT 62209 draft 0.9
- (*) The ITIS CAD file is derived from [2] and is also within the tolerance requirements of the shapes of [1] and [3].

Conformity

Based on the sample tests above, we certify that this item is in compliance with the uncertainty requirements of SAR measurements specified in standard [1] and draft standards [2] and [3].

Date 28.02.2002

Signature / Stamp

F. Rombult

**Schmid & Partner
Engineering AG**

Zoehausstrasse 43, CH-8004 Zurich
Tel. +41 1 245 97 00, Fax +41 1 245 97 79

Volker Kofler

8. System validation from original equipment supplier

DASY4 Validation Report for Head TSL

Date/Time: 19.08.2005 14:48:37

Test Laboratory: SPEAG, Zurich, Switzerland

DUT: Dipole 900 MHz; Type: D900V2; Serial: D900V2 - SN:184

Communication System: CW-900; Frequency: 900 MHz; Duty Cycle: 1:1

Medium: HSL 900 MHz;

Medium parameters used: $f = 900$ MHz; $\sigma = 0.96$ mho/m; $\epsilon_r = 42.1$; $\rho = 1000$ kg/m³

Phantom section: Flat Section

Measurement Standard: DASY4 (High Precision Assessment)

DASY4 Configuration:

- Probe: ET3DV6 - SN1507; ConvF(5.95, 5.95, 5.95); Calibrated: 26.10.2004
- Sensor-Surface: 4mm (Mechanical Surface Detection)
- Electronics: DAE4 Sn601; Calibrated: 07.01.2005
- Phantom: Flat Phantom 4.9L; Type: QD000P49AA
- Measurement SW: DASY4, V4.6 Build 9; Postprocessing SW: SEMCAD, V1.8 Build 151

Pin = 250 mW; d = 15 mm/Area Scan (81x81x1):

Measurement grid: dx=15mm, dy=15mm

Maximum value of SAR (interpolated) = 2.81 mW/g

Pin = 250 mW; d = 15 mm/Zoom Scan 2 (7x7x7)/Cube 0:

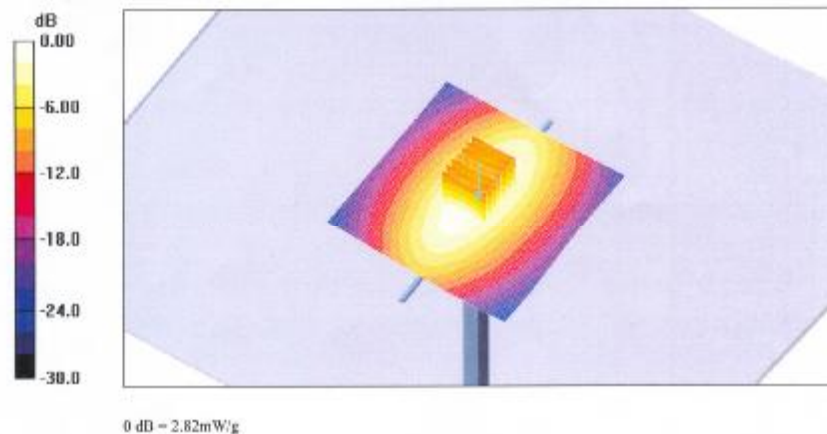
Measurement grid: dx=5mm, dy=5mm, dz=5mm

Reference Value = 56.9 V/m; Power Drift = -0.018 dB

Peak SAR (extrapolated) = 3.84 W/kg

SAR(1 g) = 2.6 mW/g; SAR(10 g) = 1.67 mW/g

Maximum value of SAR (measured) = 2.82 mW/g



DASY4 Validation Report for Body TSL

Date/Time: 22.08.2005 16:14:01

Test Laboratory: SPEAG, Zurich, Switzerland

DUT: Dipole 900 MHz; Type: D900V2; Serial: D900V2 - SN:184

Communication System: CW-900; Frequency: 900 MHz; Duty Cycle: 1:1

Medium: MSL 900 MHz;

Medium parameters used: $f = 900$ MHz; $\sigma = 1.07$ mho/m; $\epsilon_r = 54.6$; $\rho = 1000$ kg/m³

Phantom section: Flat Section

Measurement Standard: DASY4 (High Precision Assessment)

DASY4 Configuration:

- Probe: ET3DV6 - SN1507; ConvF(5.77, 5.77, 5.77); Calibrated: 26.10.2004
- Sensor-Surface: 4mm (Mechanical Surface Detection)
- Electronics: DAE4 Sn601; Calibrated: 07.01.2005
- Phantom: Flat Phantom 4.9L; Type: QD000P49AA
- Measurement SW: DASY4, V4.6 Build 9; Postprocessing SW: SEMCAD, V1.8 Build 151

Pin = 250 mW; d = 15 mm 2/Area Scan (81x81x1):

Measurement grid: dx=15mm, dy=15mm

Maximum value of SAR (interpolated) = 2.94 mW/g

Pin = 250 mW; d = 15 mm 2/Zoom Scan (7x7x7)/Cube 0:

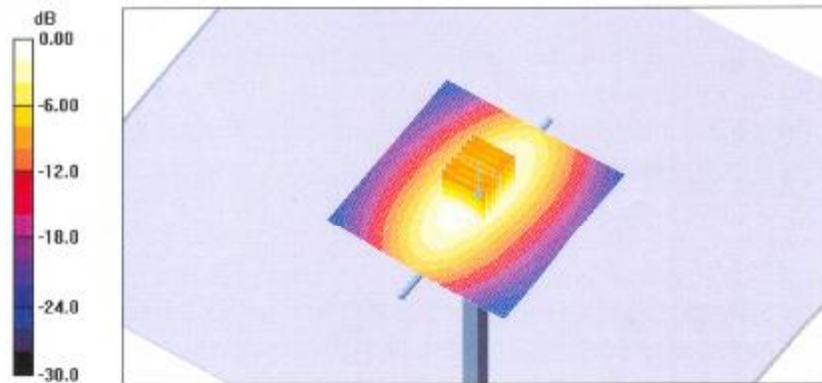
Measurement grid: dx=5mm, dy=5mm, dz=5mm

Reference Value = 55.3 V/m; Power Drift = -0.00 dB

Peak SAR (extrapolated) = 3.90 W/kg

SAR(1 g) = 2.69 mW/g; SAR(10 g) = 1.74 mW/g

Maximum value of SAR (measured) = 2.96 mW/g



0 dB = 2.96mW/g

DASY4 Validation Report for Head TSL

Date/Time: 25.08.2005 17:04:02

Test Laboratory: SPEAG, Zurich, Switzerland

DUT: Dipole 1900 MHz; Type: D1900V2; Serial: D1900V2 - SN:5d028

Communication System: CW-1900; Frequency: 1900 MHz; Duty Cycle: 1:1

Medium: HSL 1900 MHz;

Medium parameters used: $f = 1900$ MHz; $\sigma = 1.47$ mho/m; $\epsilon_r = 38.6$; $\rho = 1000$ kg/m³

Phantom section: Flat Section

Measurement Standard: DASY4 (High Precision Assessment)

DASY4 Configuration:

- Probe: ET3DV6 - SN1507; ConvF(4.96, 4.96, 4.96); Calibrated: 26.10.2004
- Sensor-Surface: 4mm (Mechanical Surface Detection)
- Electronics: DAE4 Sn601; Calibrated: 07.01.2005
- Phantom: Flat Phantom 5.0 (front); Type: QD000P50AA
- Measurement SW: DASY4, V4.6 Build 9; Postprocessing SW: SEMCAD, V1.8 Build 151

Pin = 250 mW; d = 10 mm/Area Scan (61x81x1):

Measurement grid: dx=15mm, dy=15mm

Maximum value of SAR (interpolated) = 11.8 mW/g

Pin = 250 mW; d = 10 mm/Zoom Scan (7x7x7)/Cube 0:

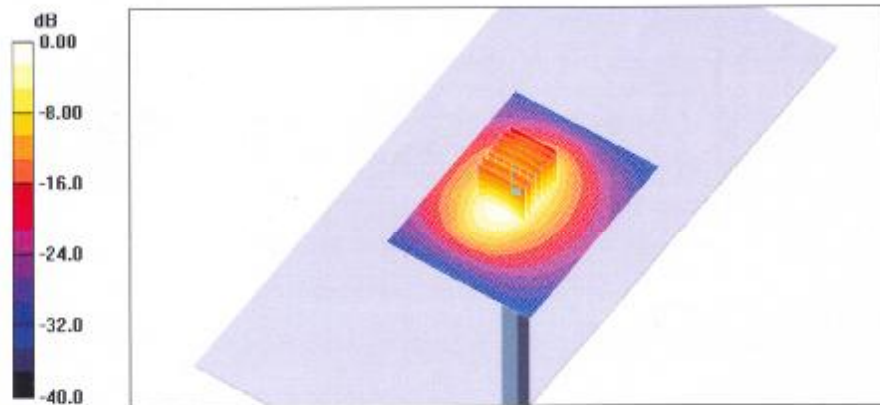
Measurement grid: dx=5mm, dy=5mm, dz=5mm

Reference Value = 91.5 V/m; Power Drift = 0.00 dB

Peak SAR (extrapolated) = 17.2 W/kg

SAR(1 g) = 9.89 mW/g; SAR(10 g) = 5.16 mW/g

Maximum value of SAR (measured) = 11.2 mW/g



0 dB = 11.2mW/g

DASY4 Validation Report for Body TSL

Date/Time: 26.08.2005 15:32:29

Test Laboratory: SPEAG, Zurich, Switzerland

DUT: Dipole 1900 MHz; Type: D1900V2; Serial: D1900V2 - SN:5d028

Communication System: CW-1900; Frequency: 1900 MHz; Duty Cycle: 1:1

Medium: MSL 1900 MHz;

Medium parameters used: $f = 1900$ MHz; $\sigma = 1.6$ mho/m; $\epsilon_r = 53.3$; $\rho = 1000$ kg/m³.

Phantom section: Flat Section

Measurement Standard: DASY4 (High Precision Assessment)

DASY4 Configuration:

- Probe: ET3DV6 - SN1507; ConvF(4.43, 4.43, 4.43); Calibrated: 26.10.2004
- Sensor-Surface: 4mm (Mechanical Surface Detection)
- Electronics: DAE4 Sn601; Calibrated: 07.01.2005
- Phantom: Flat Phantom 5.0 (front); Type: QD000P50AA
- Measurement SW: DASY4, V4.6 Build 9; Postprocessing SW: SEMCAD, V1.8 Build 151

Pin = 250 mW; d = 10 mm 2/Area Scan (81x81x1):

Measurement grid: dx=15mm, dy=15mm

Maximum value of SAR (interpolated) = 11.2 mW/g

Pin = 250 mW; d = 10 mm 2/Zoom Scan (7x7x7)/Cube 0:

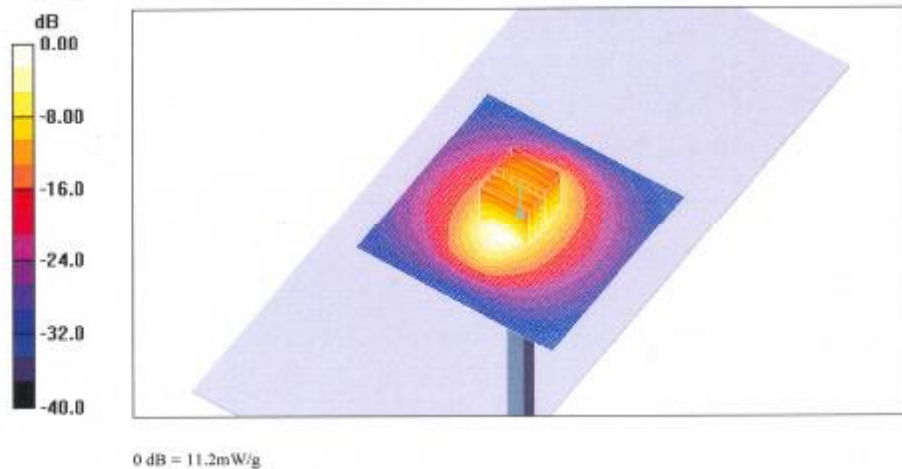
Measurement grid: dx=5mm, dy=5mm, dz=5mm

Reference Value = 86.7 V/m; Power Drift = -0.025 dB

Peak SAR (extrapolated) = 16.4 W/kg

SAR(1 g) = 9.81 mW/g; SAR(10 g) = 5.22 mW/g

Maximum value of SAR (measured) = 11.2 mW/g



The end