

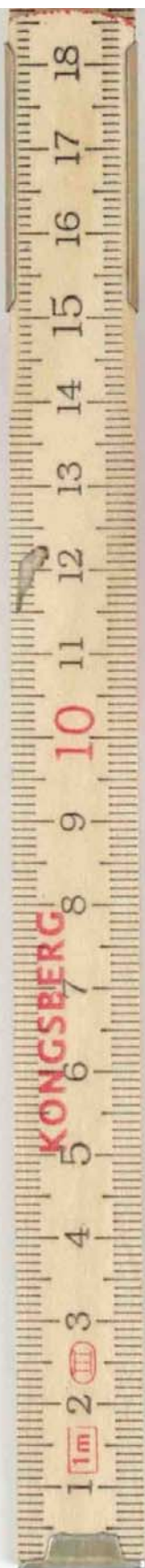
TR20 GMDSS EXTERNAL PHOTOS

TR20 GMDSS front side.....	Page 2
TR20 GMDSS rear side.....	Page 3
TR20 GMDSS left side.....	Page 4
TR20 GMDSS right side.....	Page 5
TR20 GMDSS top side.....	Page 6
TR20 GMDSS bottom side.....	Page 7
TR20 GMDSS front side with battery.....	Page 8
TR20 GMDSS front side with battery and antenna.....	Page 9
Lithium battery rear side.....	Page 10
Lithium battery bottom side.....	Page 11

TR20 GMDSS front side



TR20 GMDSS rear side



TR20 GMDSS left side



TR20 GMDSS right side

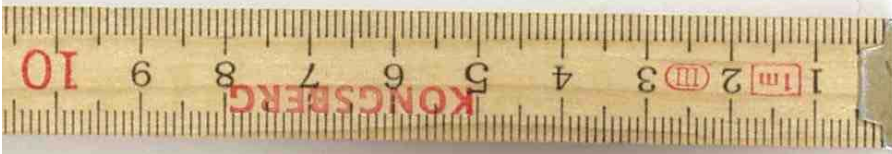


TR20 GMDSS top side



TR20 GMDSS bottom side





TR20 GMDSS front side with battery



TR20 GMDSS front side 2



Lithium battery rear side



Operation Instructions:

1. Press \odot key to turn on
2. Adjust Vol with \uparrow and \downarrow keys
3. Press CH for channel selection
4. Press SQ to adjust squelch

To transmit press the PTT key on the side of the radio

Lithium battery bottom side

