

TR20 GMDSS INTERNAL PHOTOS

| | |
|---|---------|
| TR20 GMDSS rubber gasket..... | Page 2 |
| TR20 GMDSS back cover innside..... | Page 3 |
| TR20 GMDSS electronical boards in cabinet..... | Page 4 |
| TR20 GMDSS collection of electronical boards..... | Page 5 |
| TR20 GMDSS Main board rear side..... | Page 6 |
| TR20 GMDSS Main board front side..... | Page 7 |
| TR20 GMDSS RF module top side..... | Page 8 |
| TR20 GMDSS RF module rear side..... | Page 9 |
| TR20 GMDSS Synth board top side..... | Page 10 |
| TR20 GMDSS Synth board rear side..... | Page 11 |
| Lithium battery inside..... | Page 12 |
| Lithium battery with labels..... | Page 13 |
| Lithium battery top side..... | Page 14 |

Rubber gasket



Back cover inside



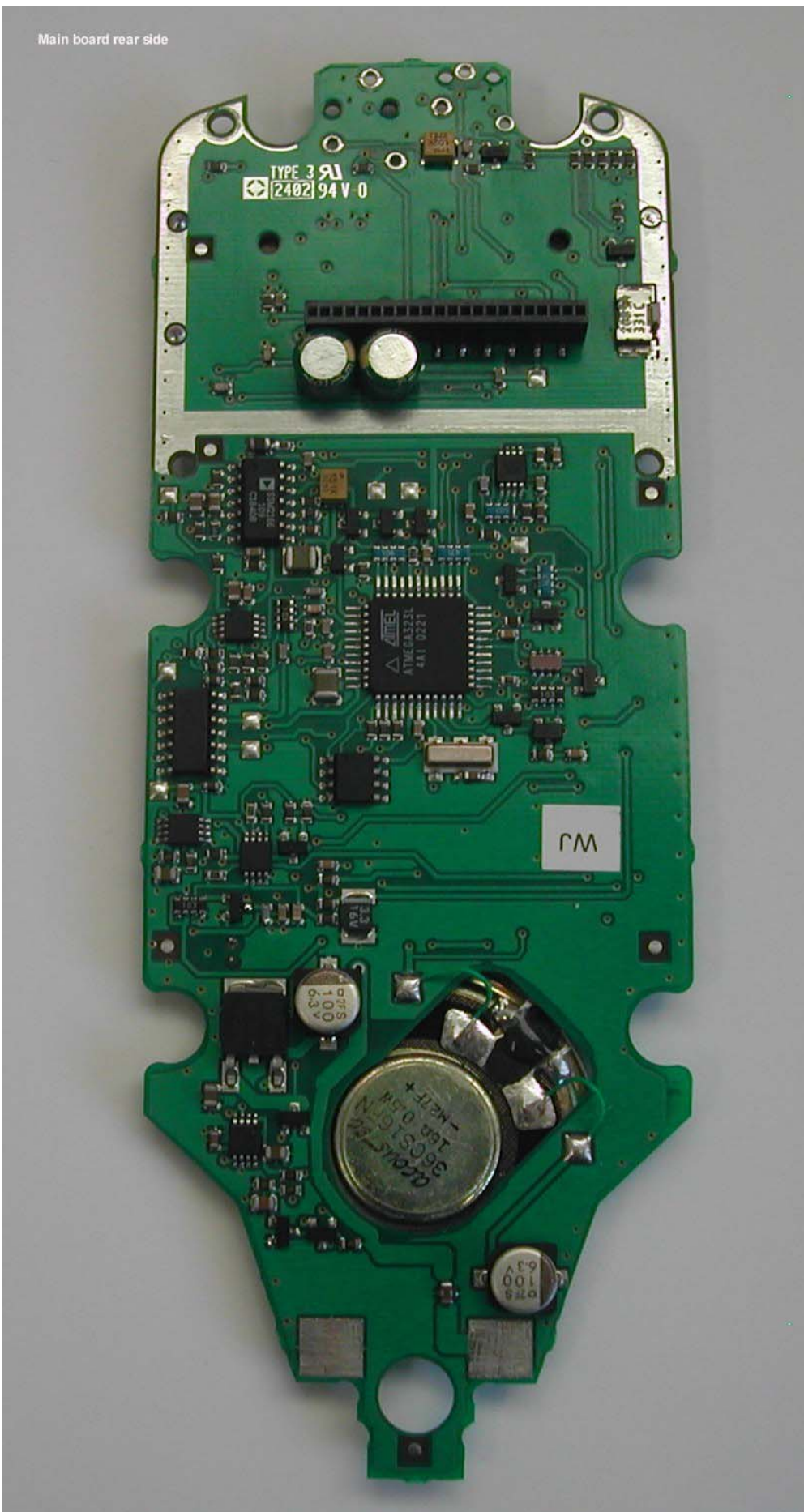
Collection of electrical boards in cabinet



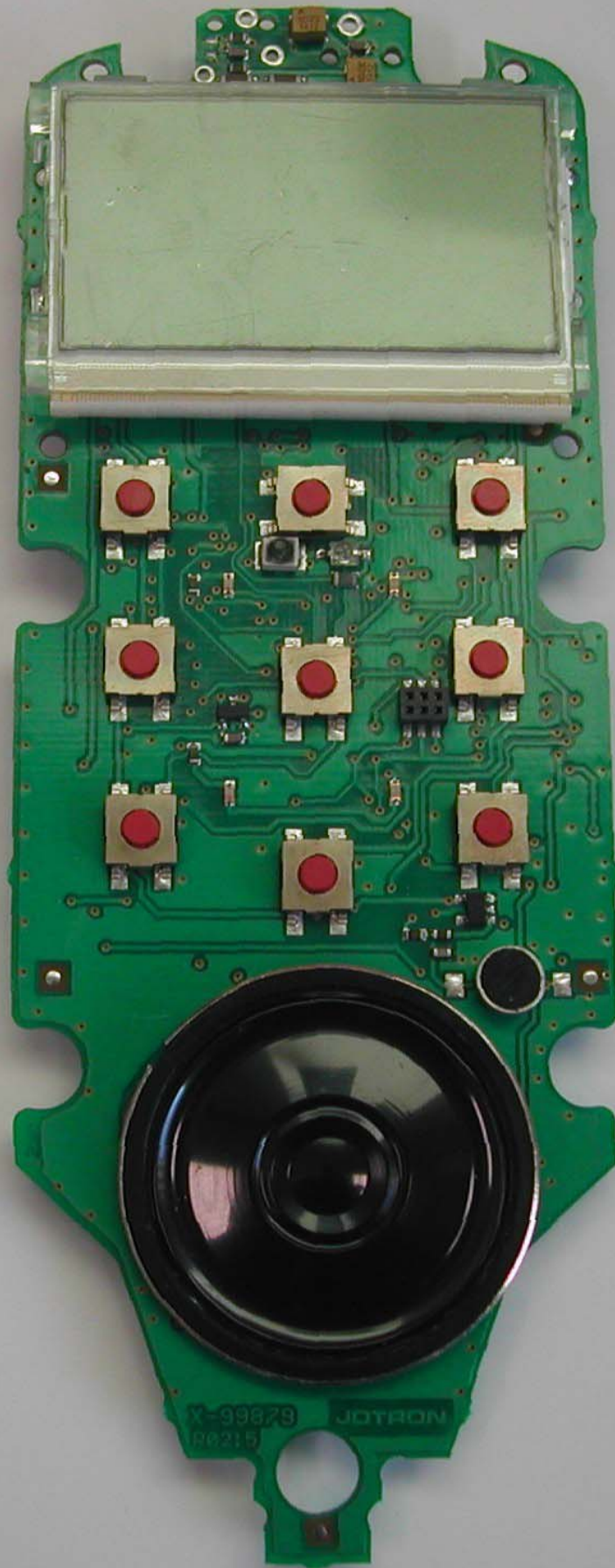
Collection of electronical boards



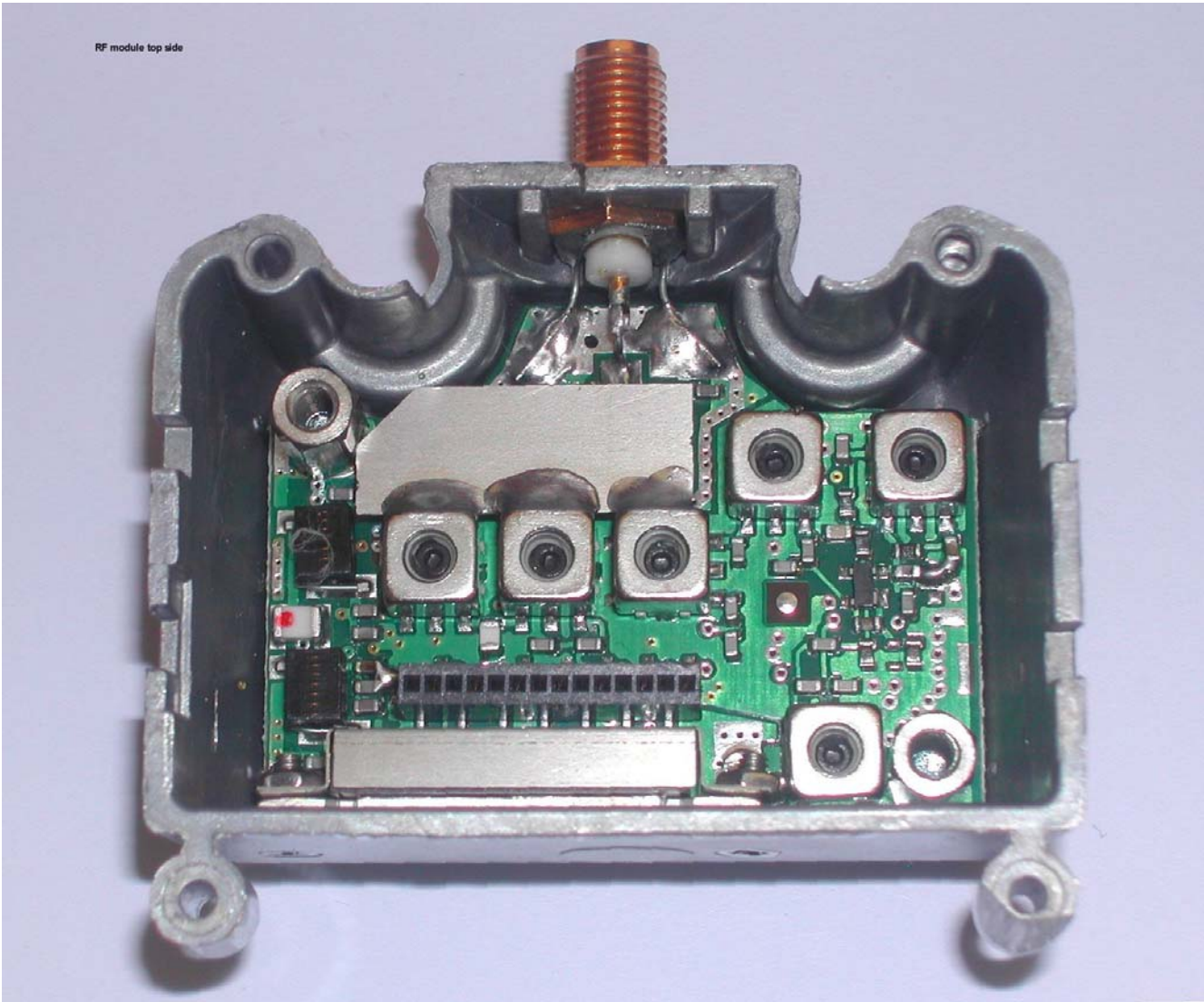
Main board rear side



Main board front side



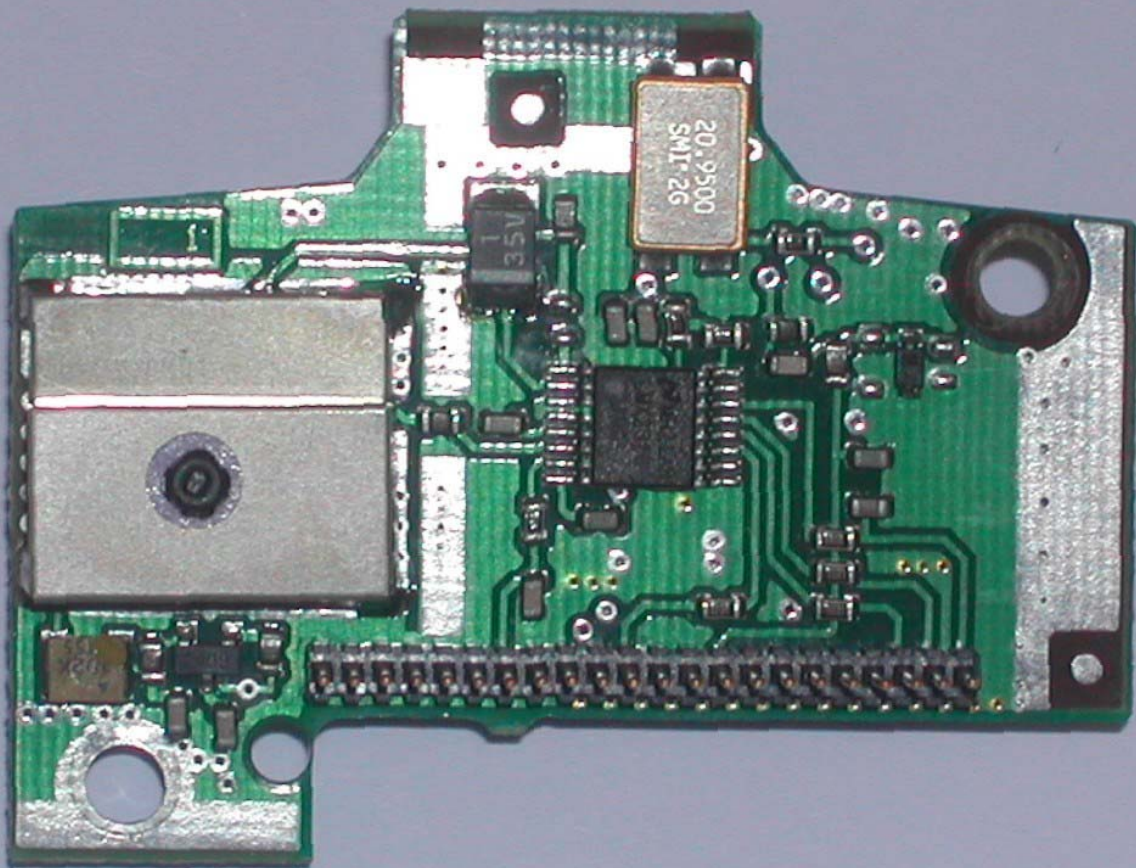
RF module top side



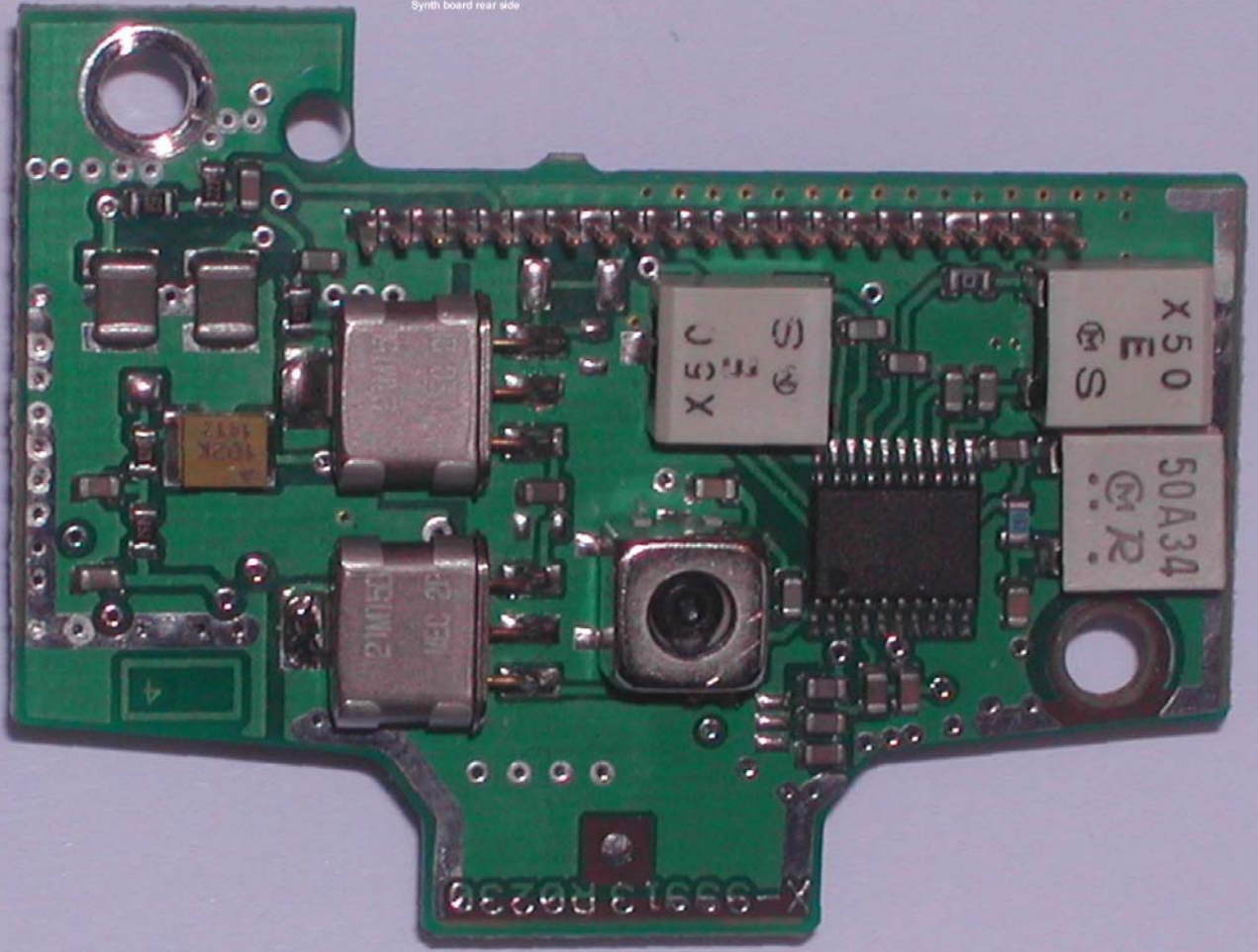
RF module rear side



Synth board top side



Synth board rear side



Lithium battery inside



Primary Lithium Battery
Type 80060
Do not short circuit.
Do not incinerate.
Expiry date: month-year

| | | | | | | | | | | | |
|---|---|---|---|---|---|---|---|---|----|----|----|
| 1 | 2 | 3 | 4 | 5 | 6 | 7 | 8 | 9 | 10 | 11 | 12 |
|---|---|---|---|---|---|---|---|---|----|----|----|

2005 2006 2007
05 06 07

Lithium battery with labels



Lithium battery top side

