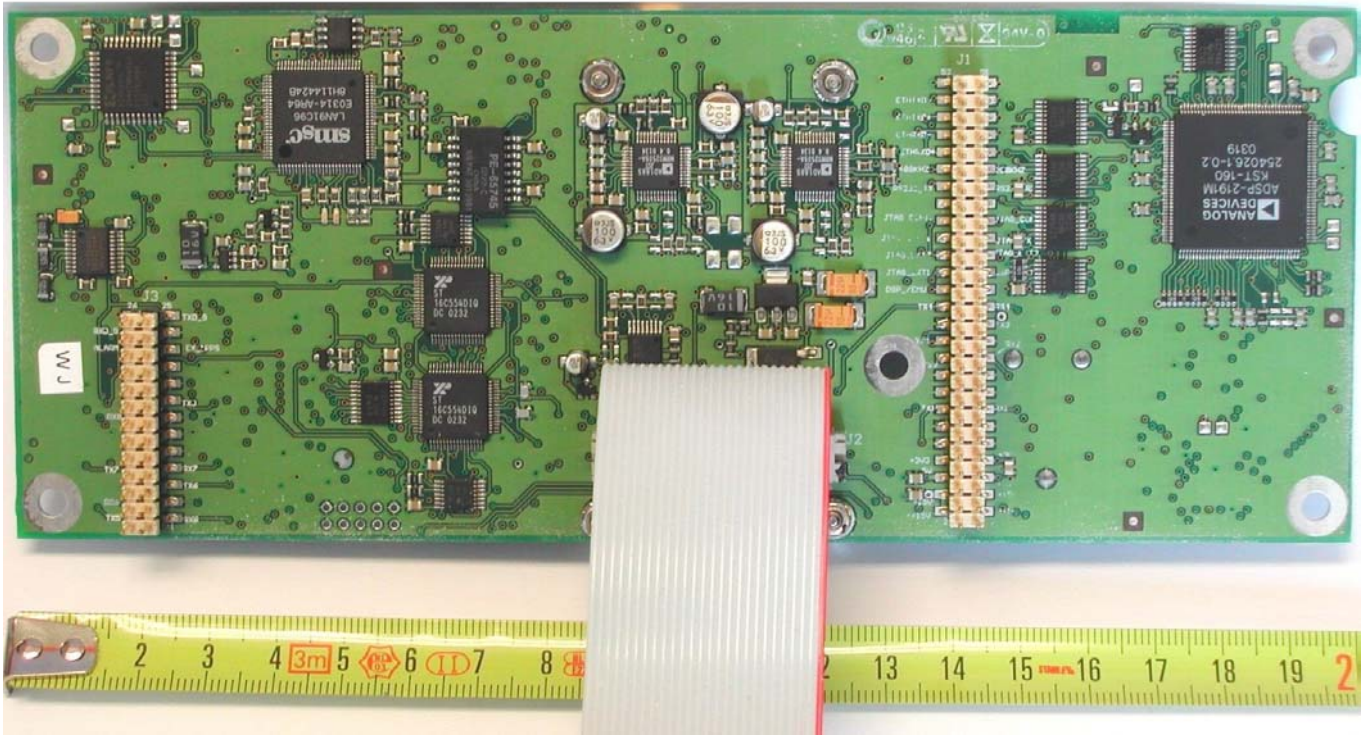


Tron UAIS TR-2500

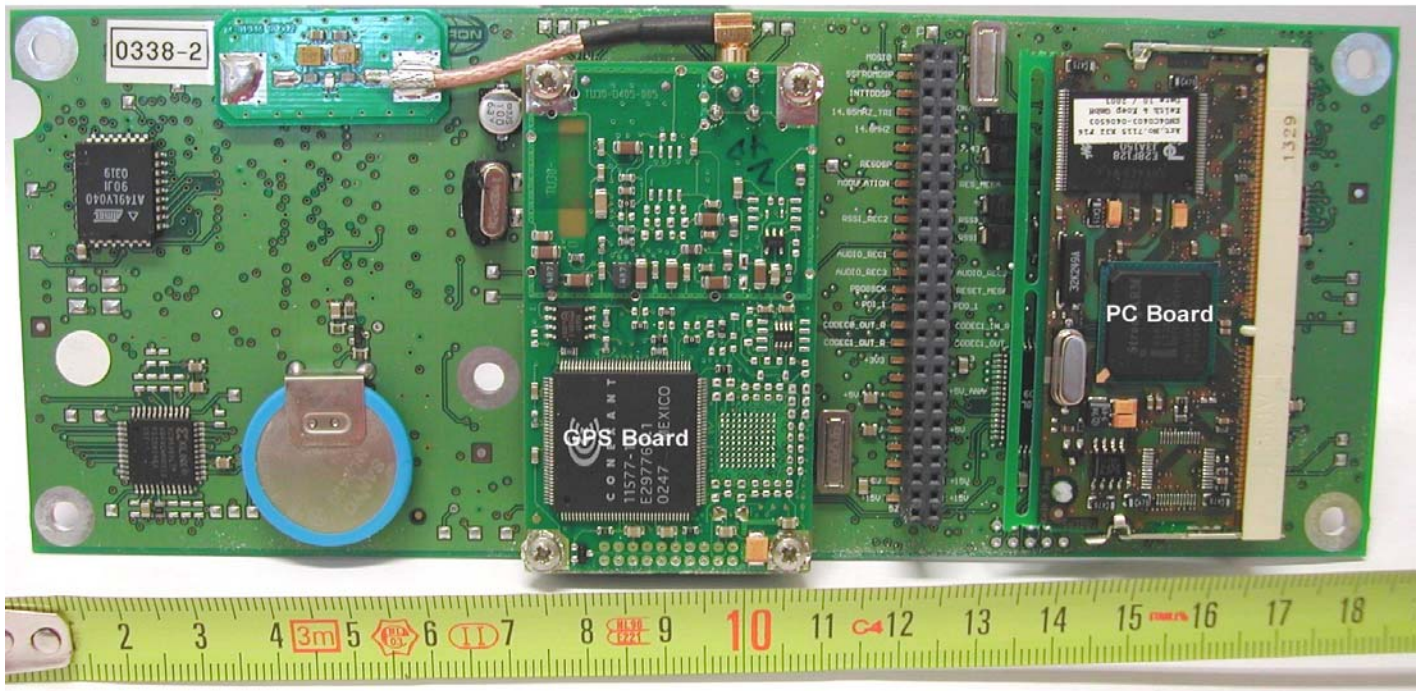
Internal pictures

<u>Digital Module</u>	<u>page 2</u>
<u>Digital Module</u>	<u>page 3</u>
<u>Connector Module</u>	<u>page 4</u>
<u>Front Module</u>	<u>page 5</u>
<u>Power Module</u>	<u>page 6</u>
<u>RF Module</u>	<u>page 7</u>
<u>RF Module</u>	<u>page 8</u>
<u>Assembled Modules</u>	<u>page 8</u>
<u>Modules in box</u>	<u>page 9</u>
<u>Adding Front Module</u>	<u>page 9</u>
<u>Junction box</u>	<u>page 10</u>

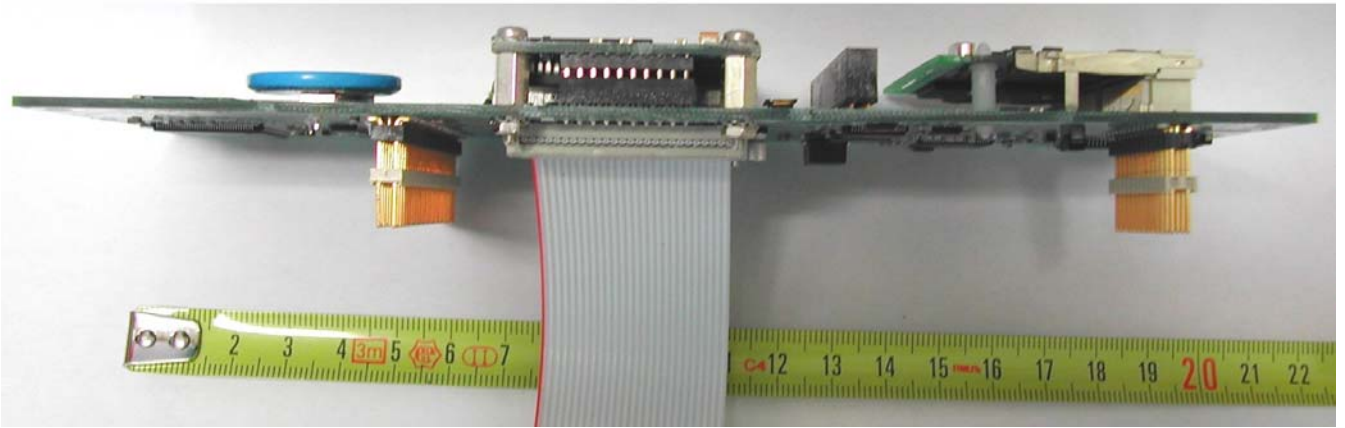
Digital Module top



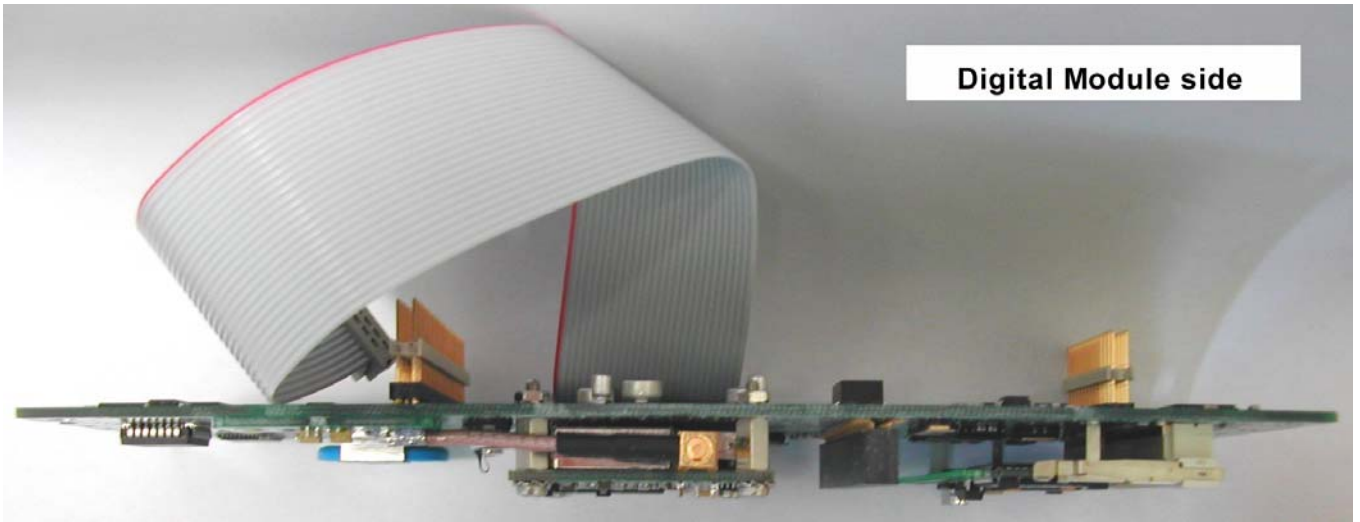
Digital Module rear



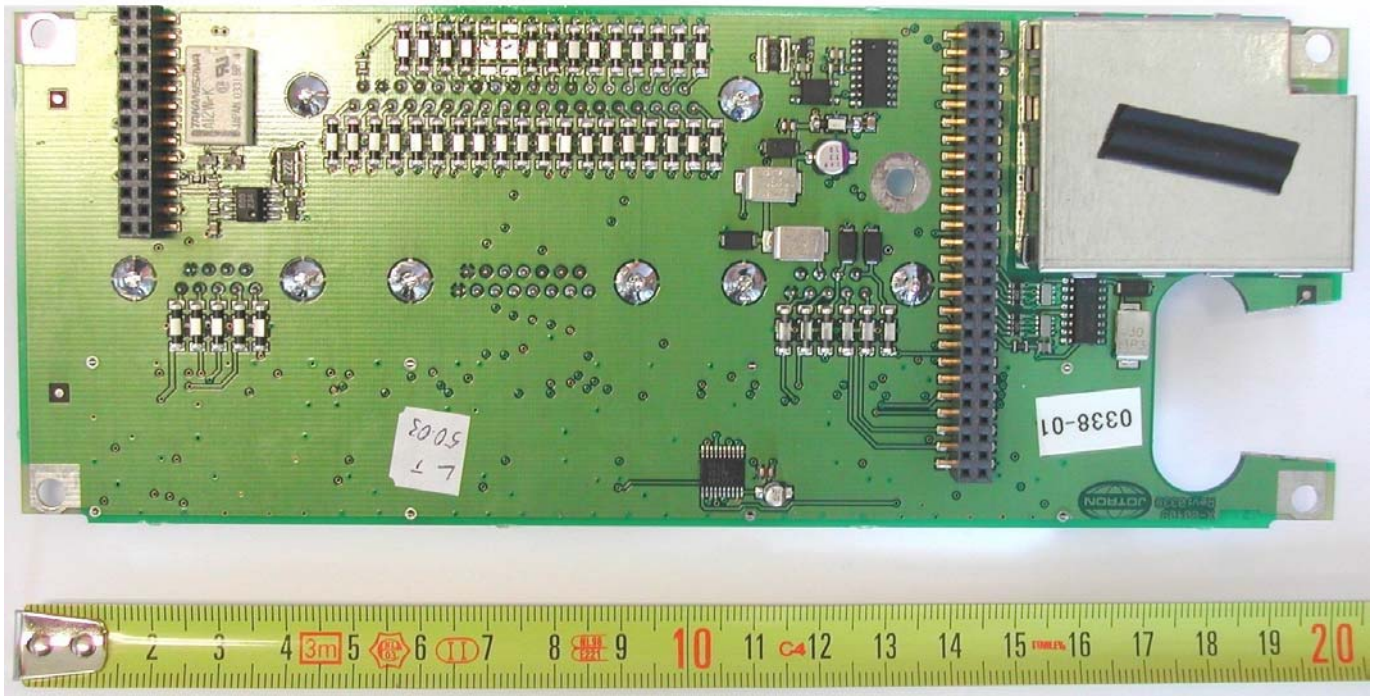
Digital Module side



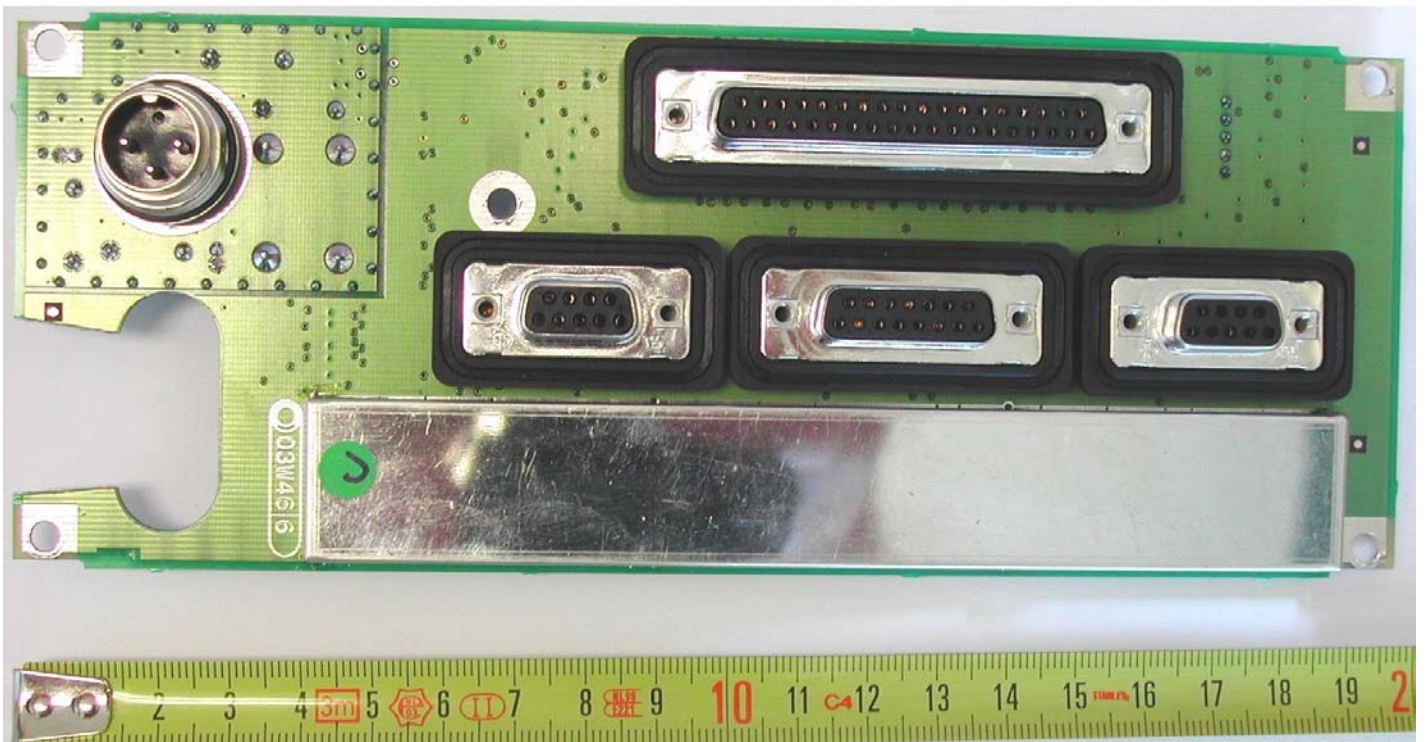
Digital Module side



Connector Module rear



Connector Module top



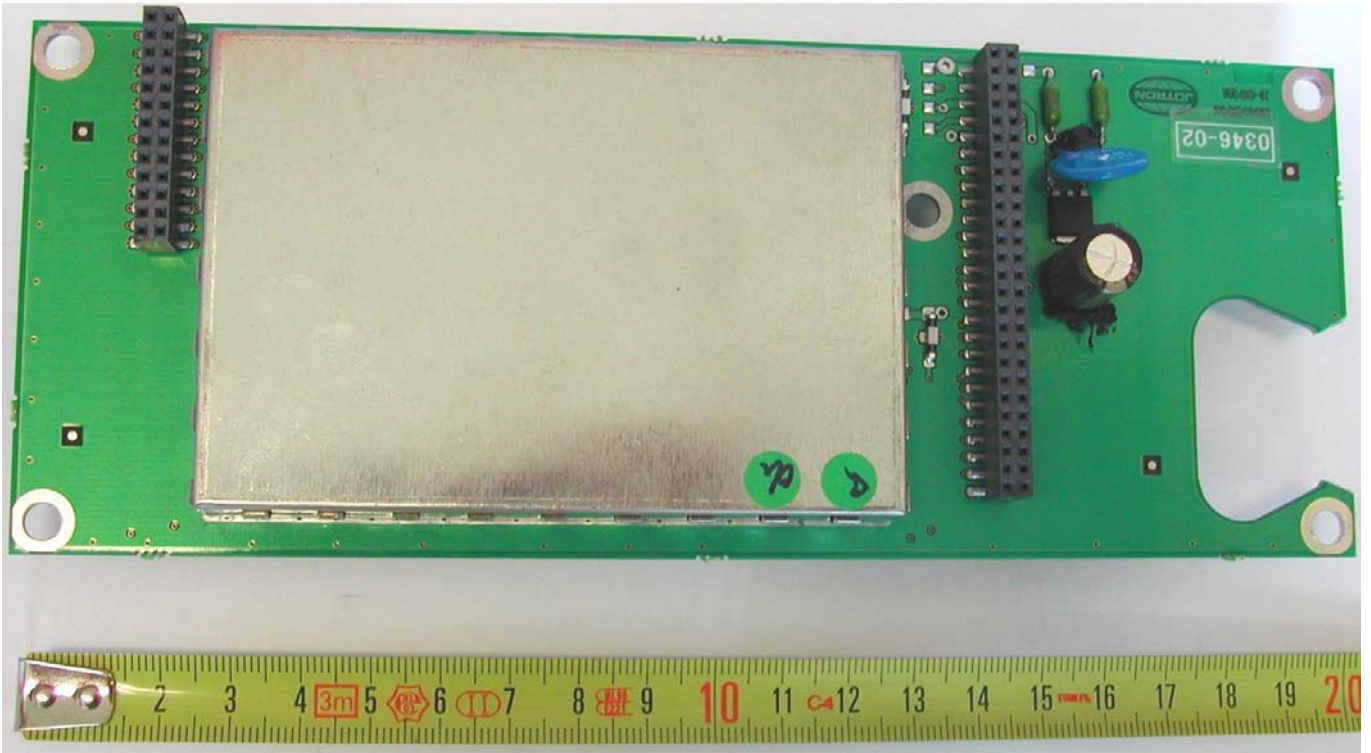
Front Module top



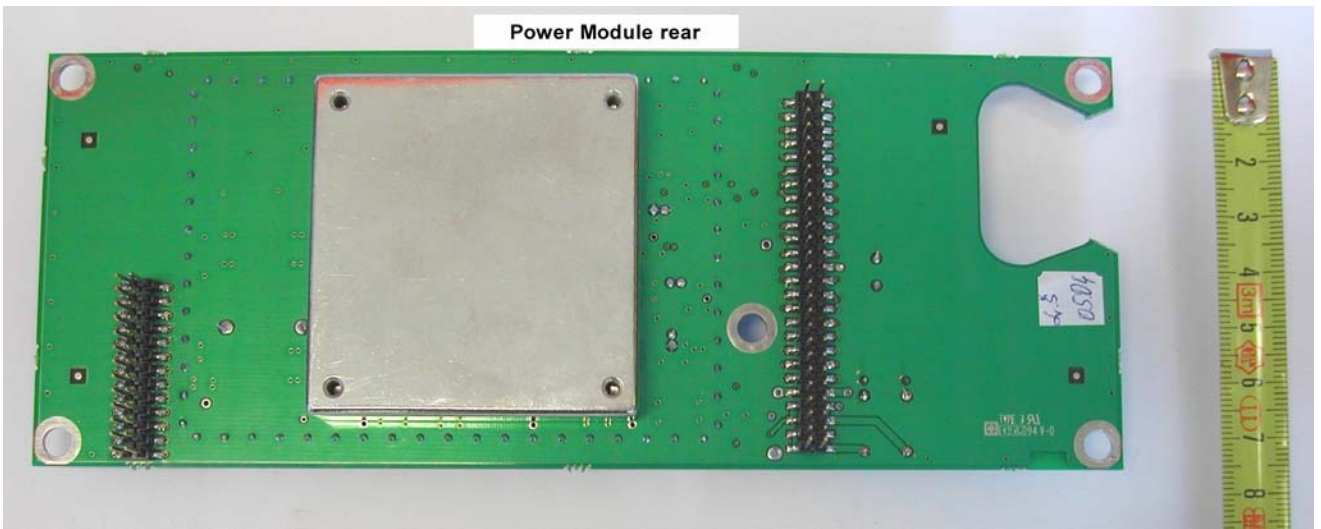
Front Module rear side



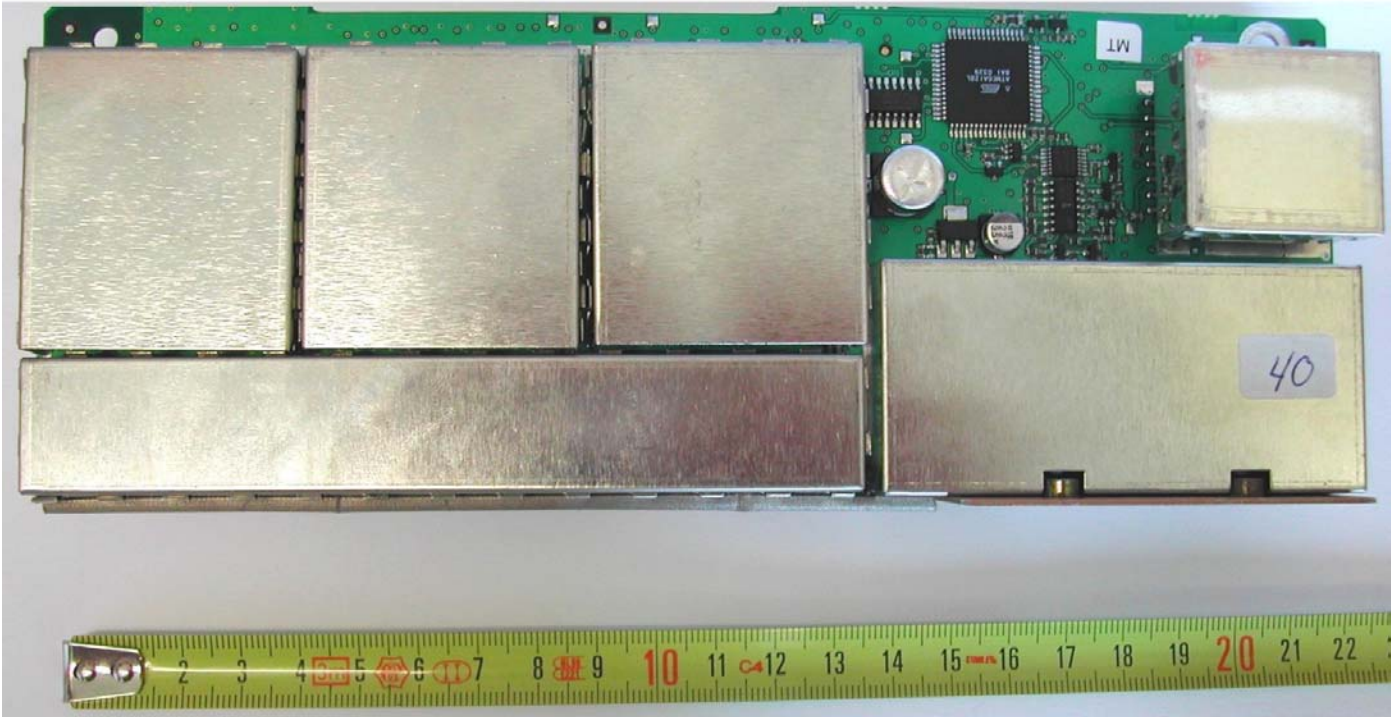
Power Module top



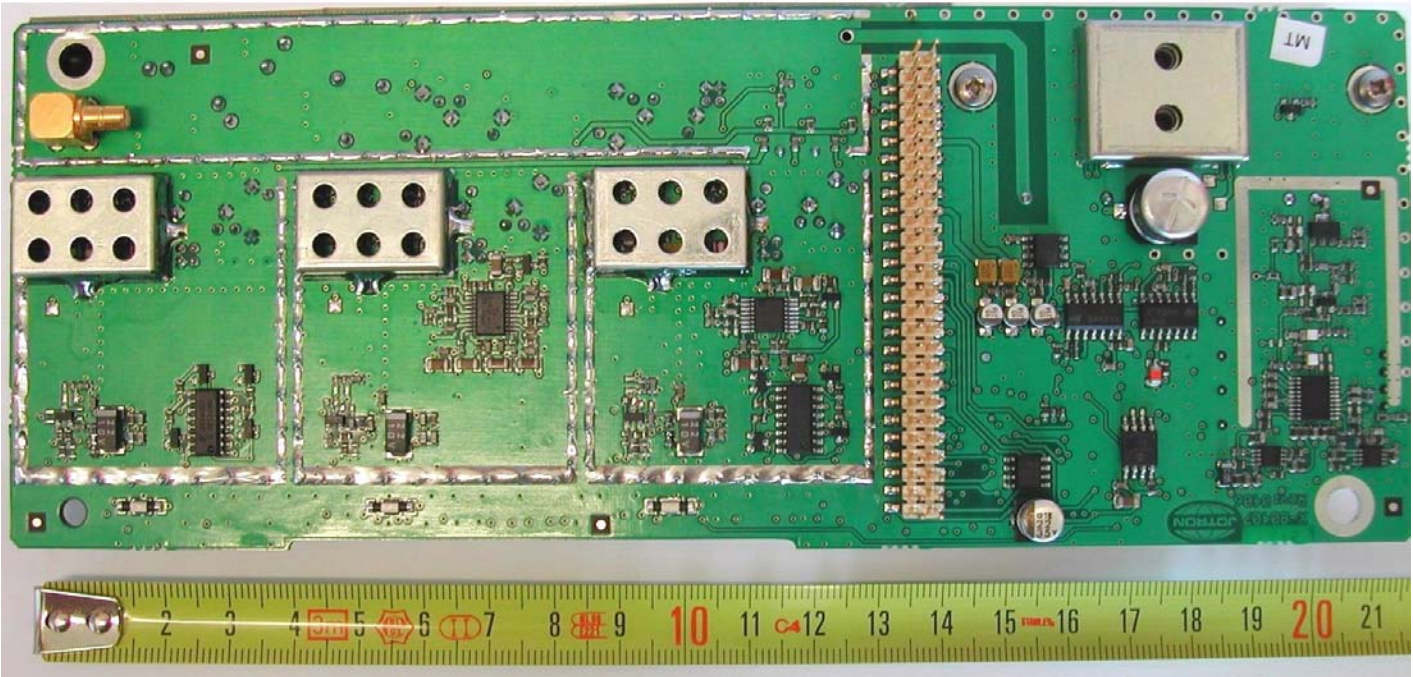
Power Module rear

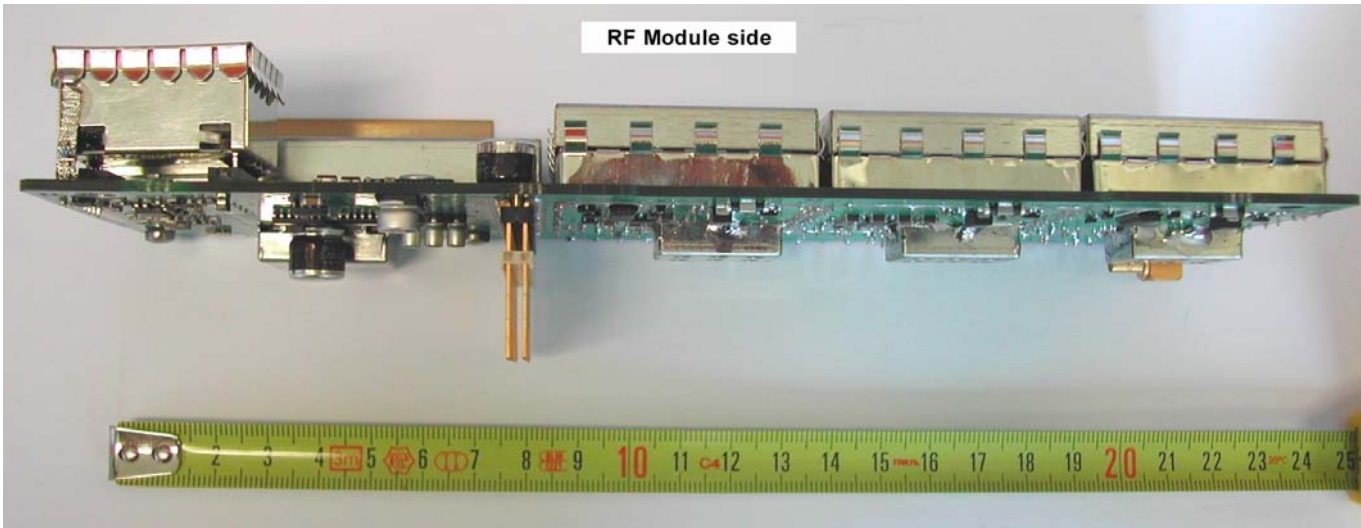


RF Module top

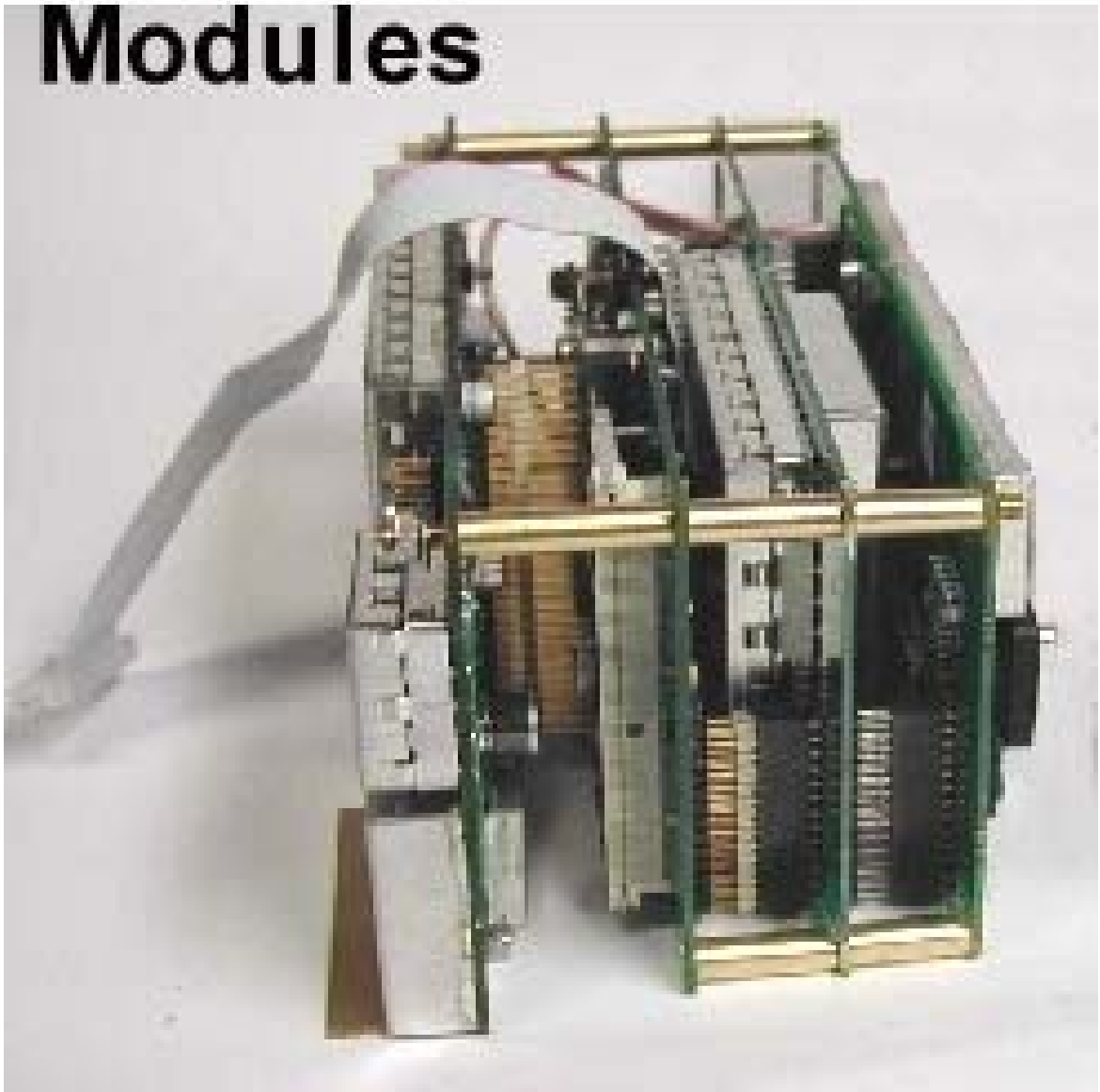


RF Module rear

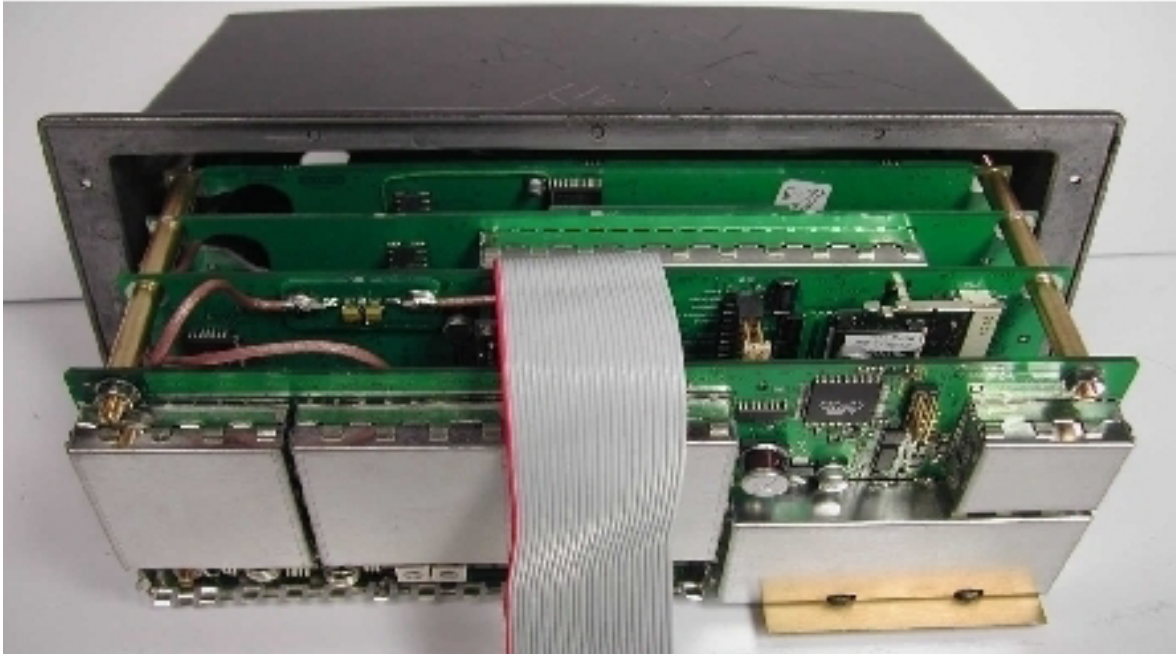




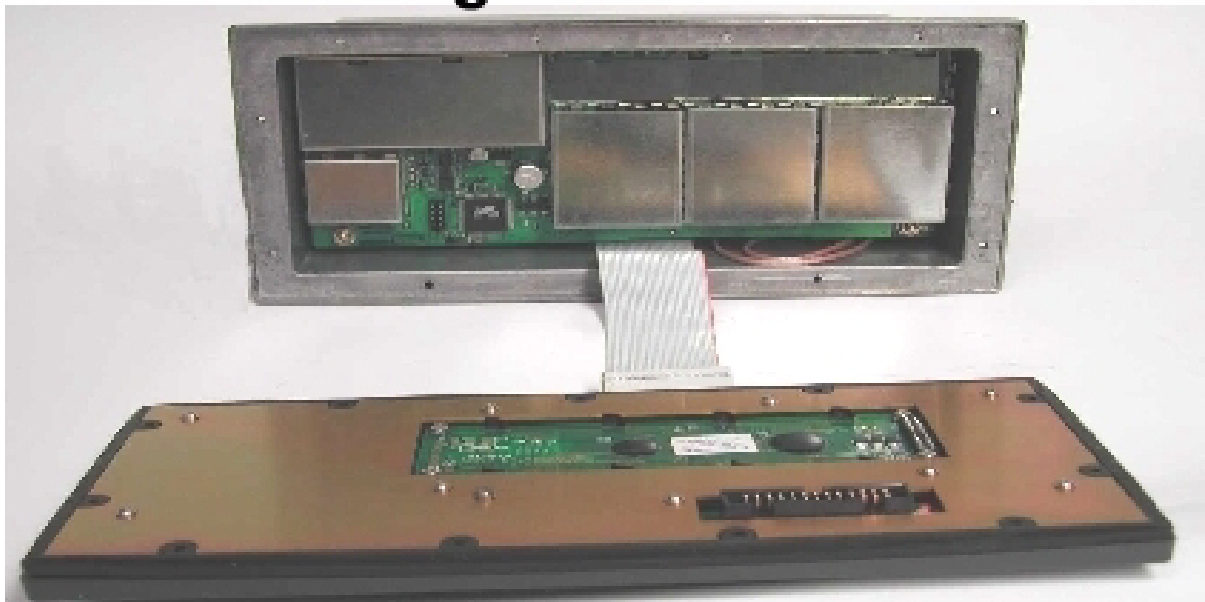
Composition of Modules



Modules and Box



Adding Front Module



Junction Box with cable connected

