



To whom it may concern

Tjodalyng: 04.02.14

### TR-7750C power adjustment procedure:

The adjustment of the output power is described in the “Operators and Installation Manual” , Chapter 5, Operating instructions. Below are extracts from the manual.

#### 5.4.2 TX config group

SysOp access level. Refer to section 5.5.2 for details.

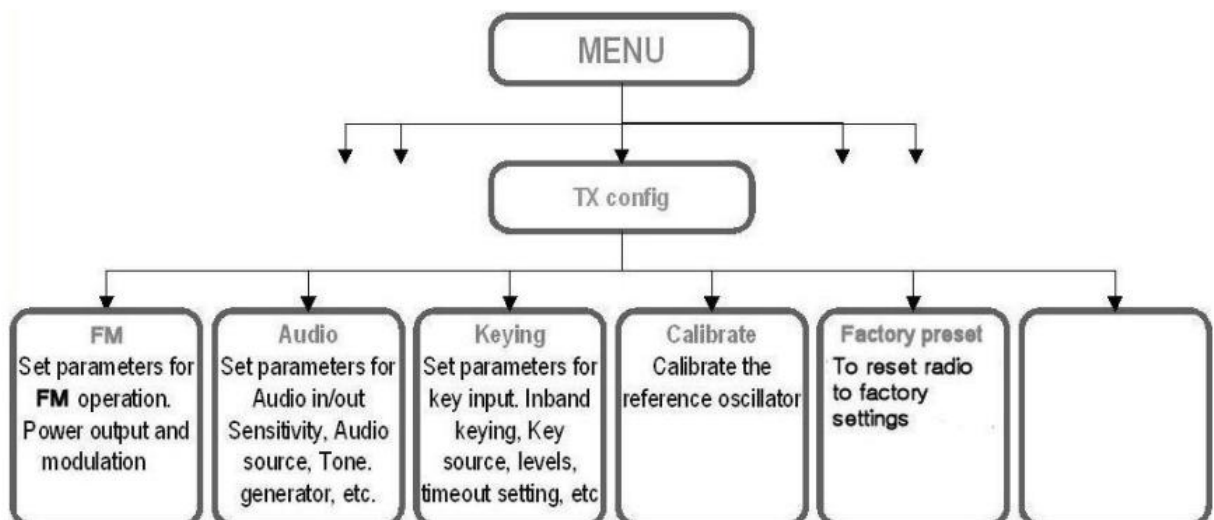


Figure 5.4-2, TX config group, transmitter



To adjust the power output, enter the “TX config” submenu and select “FM”. Then select “Output power”. The output power can then be adjusted from 30 to 47dBm in 1dB steps (1 – 50W).

### 5.5.2 TX config group

Menu path: TX config ►	Parameter	Range	Default	Details
FM	Output power	30 – 47 dBm 1 dB steps	47 dBm	Set the output power for FM operation. Max. level depends on radio model and is: <ul style="list-style-type: none"><li>▪ 47 dBm for TA7650C</li></ul>
FM	Modulation	Up to $\pm 5$ kHz deviation	$\pm 5$ kHz	Set the deviation for FM operation.

Jotron AS