



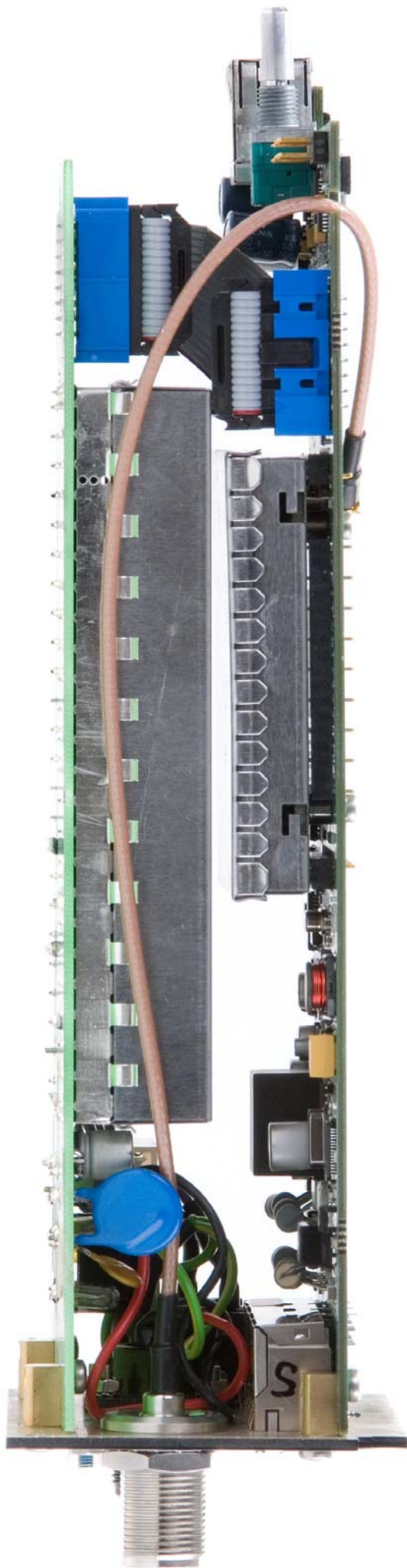
220
16V

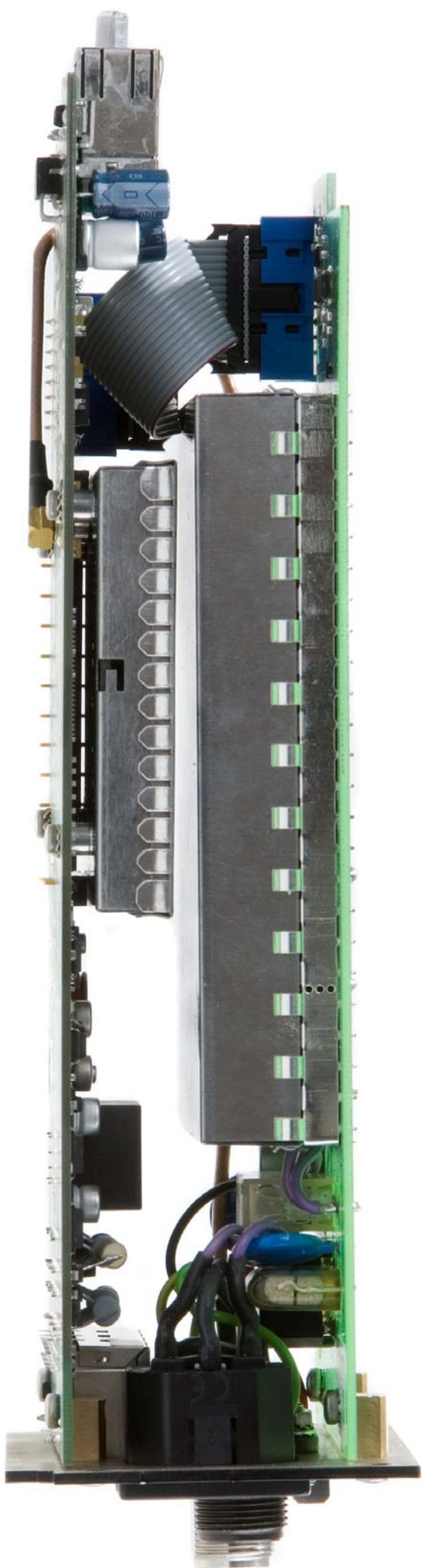
TEMP
EX_CUR
AC/DC
ON
+30V
GND
+12V
+5V

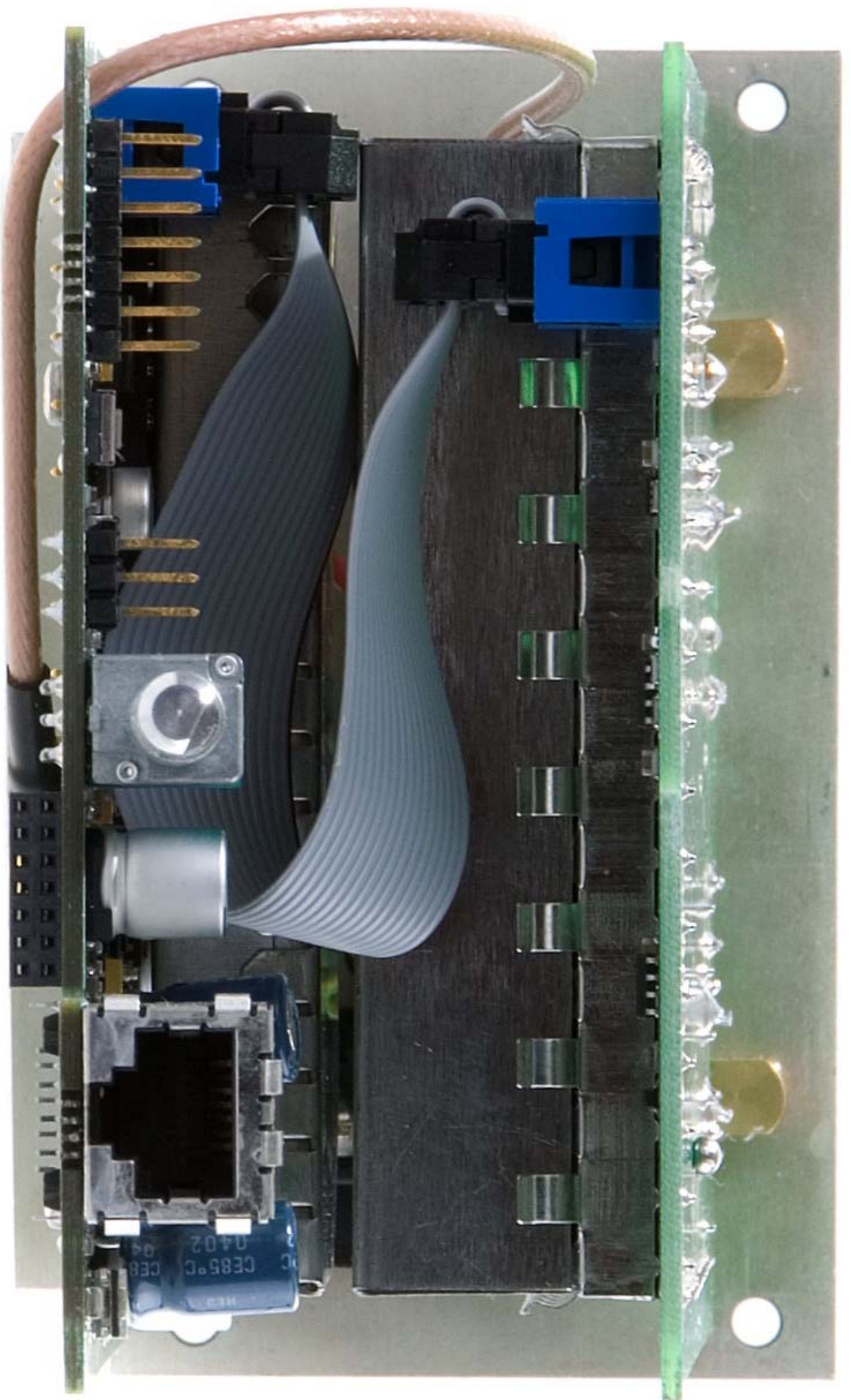
Caution
Hazard

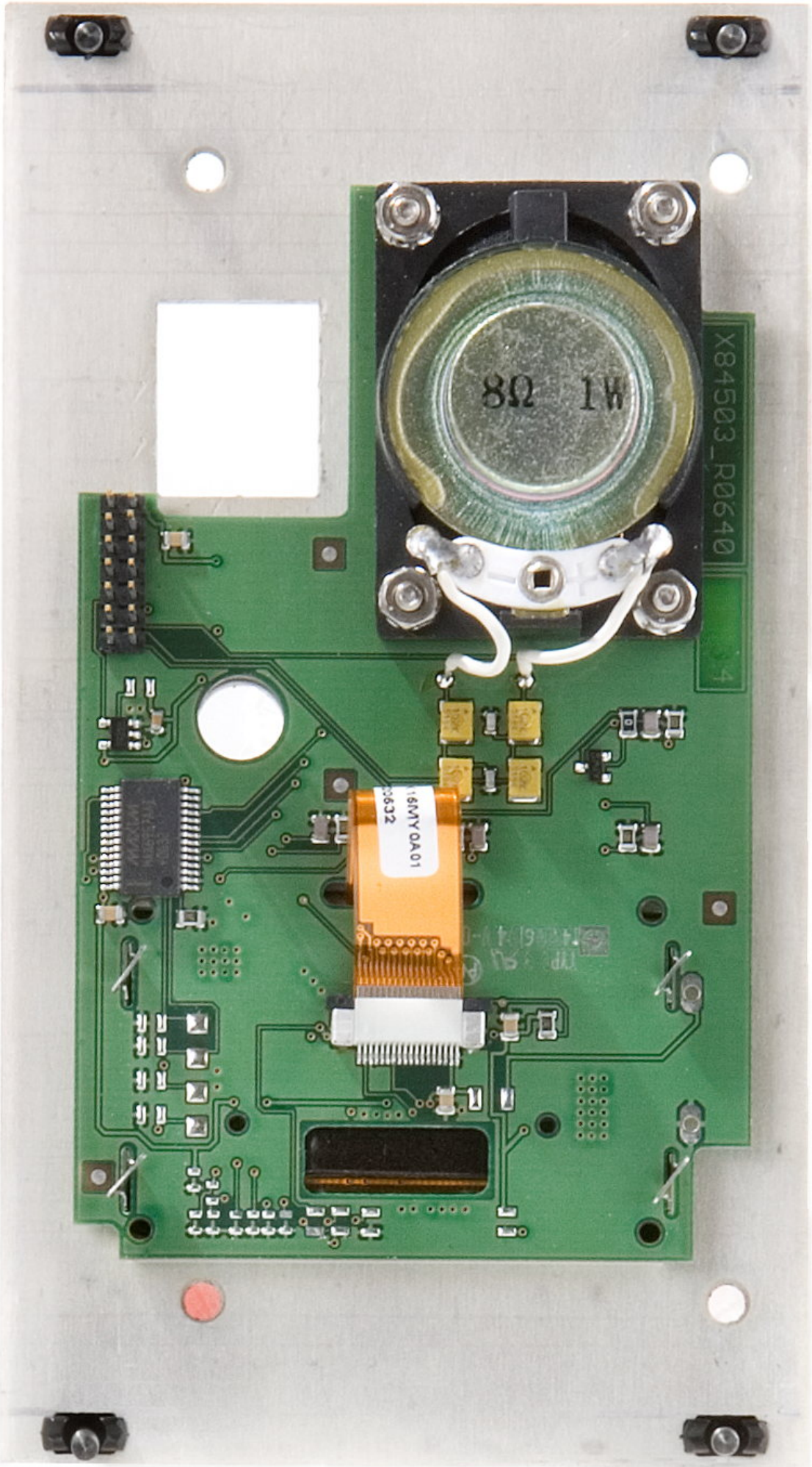
UAC

CHASSI
GND
DC IN





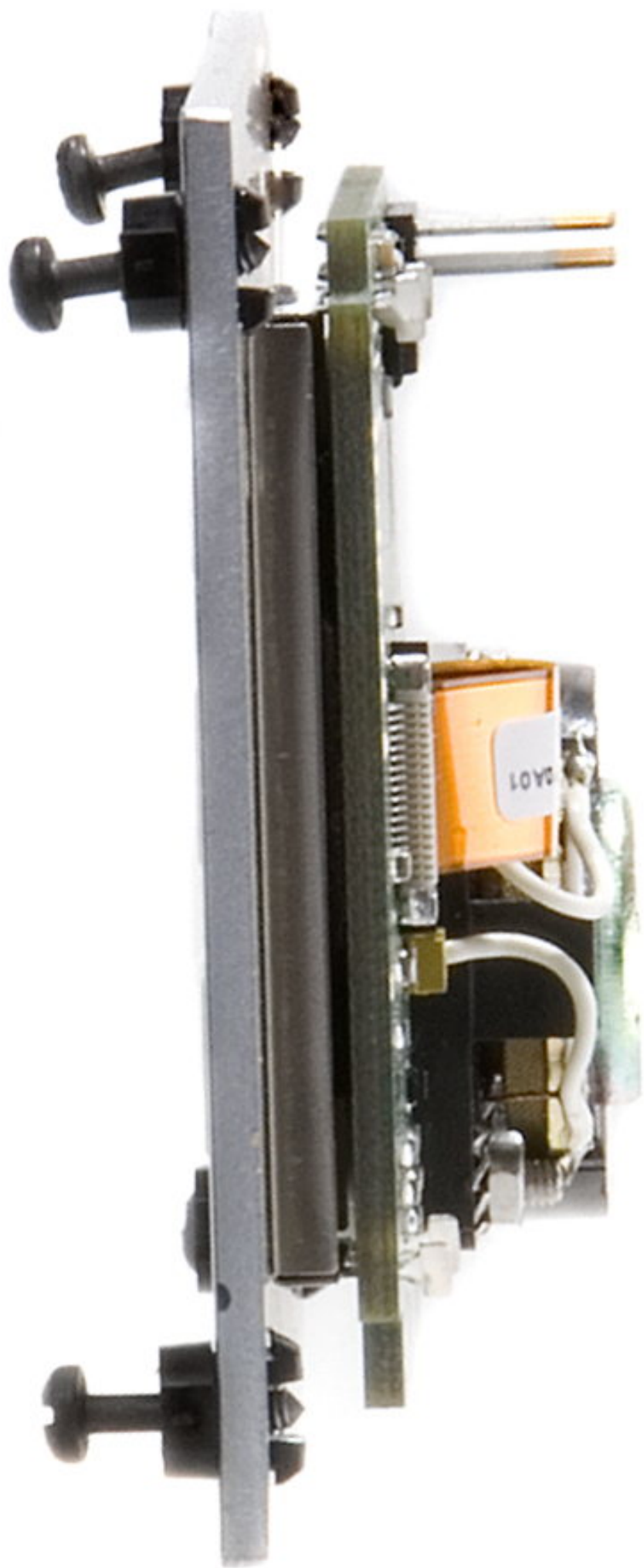


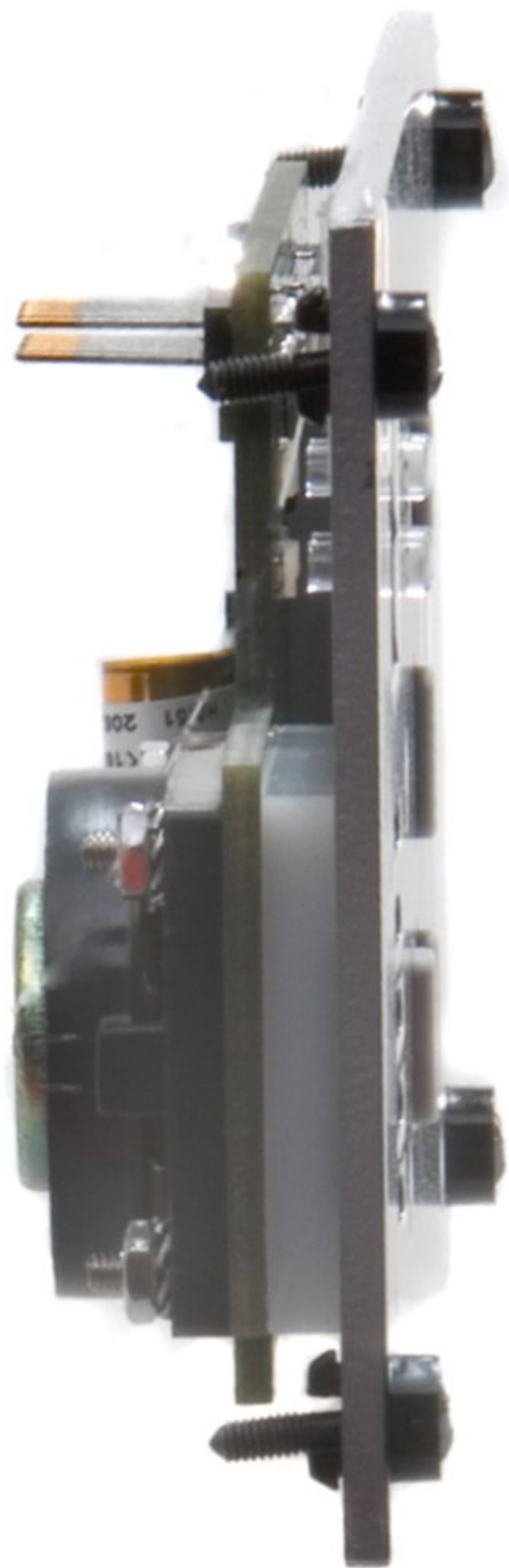


X84503_R0640

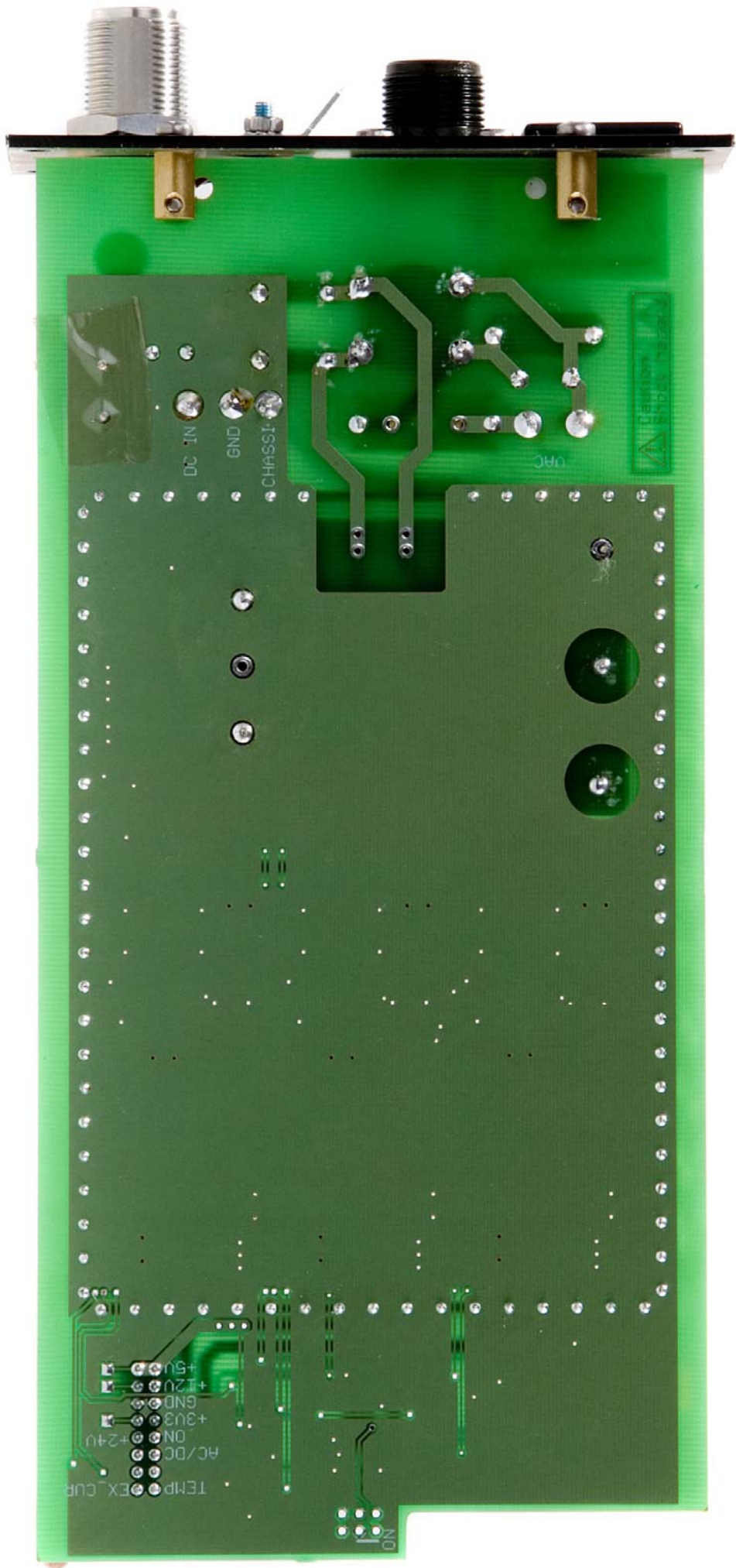
8Ω 1W

16MY0A01
20632











**TRACO
POWER**

FG
AC(N)
AC(L)

Input: 100-240VAC
47-63Hz
0.25 A max.

Output: 24VDC/416mA

TML 10124



-Vout
+Vout

473nF
LM2676
S-ADJ

473nF
LM2676
S-ADJ

473nF
LM2676
S-ADJ

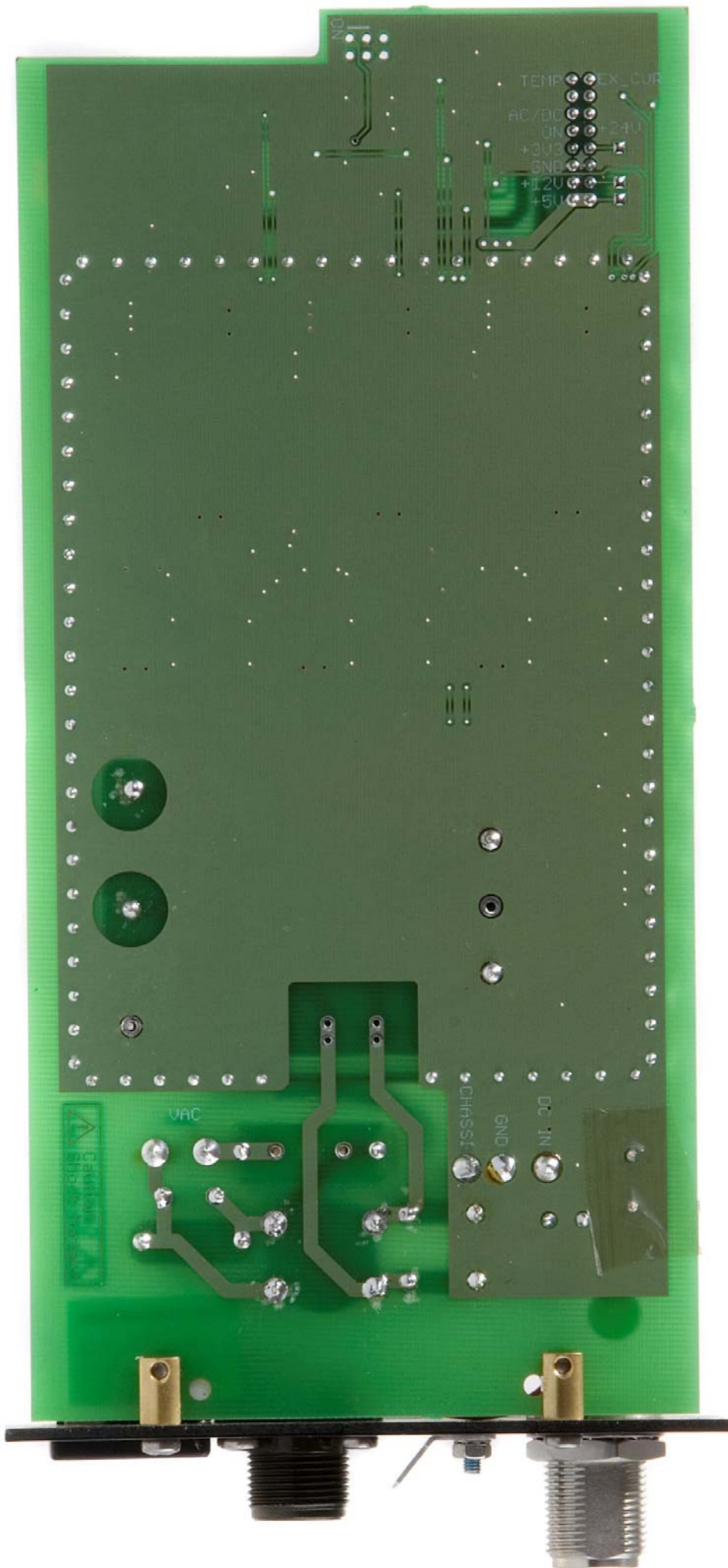
JOTRION
K-82412
006622

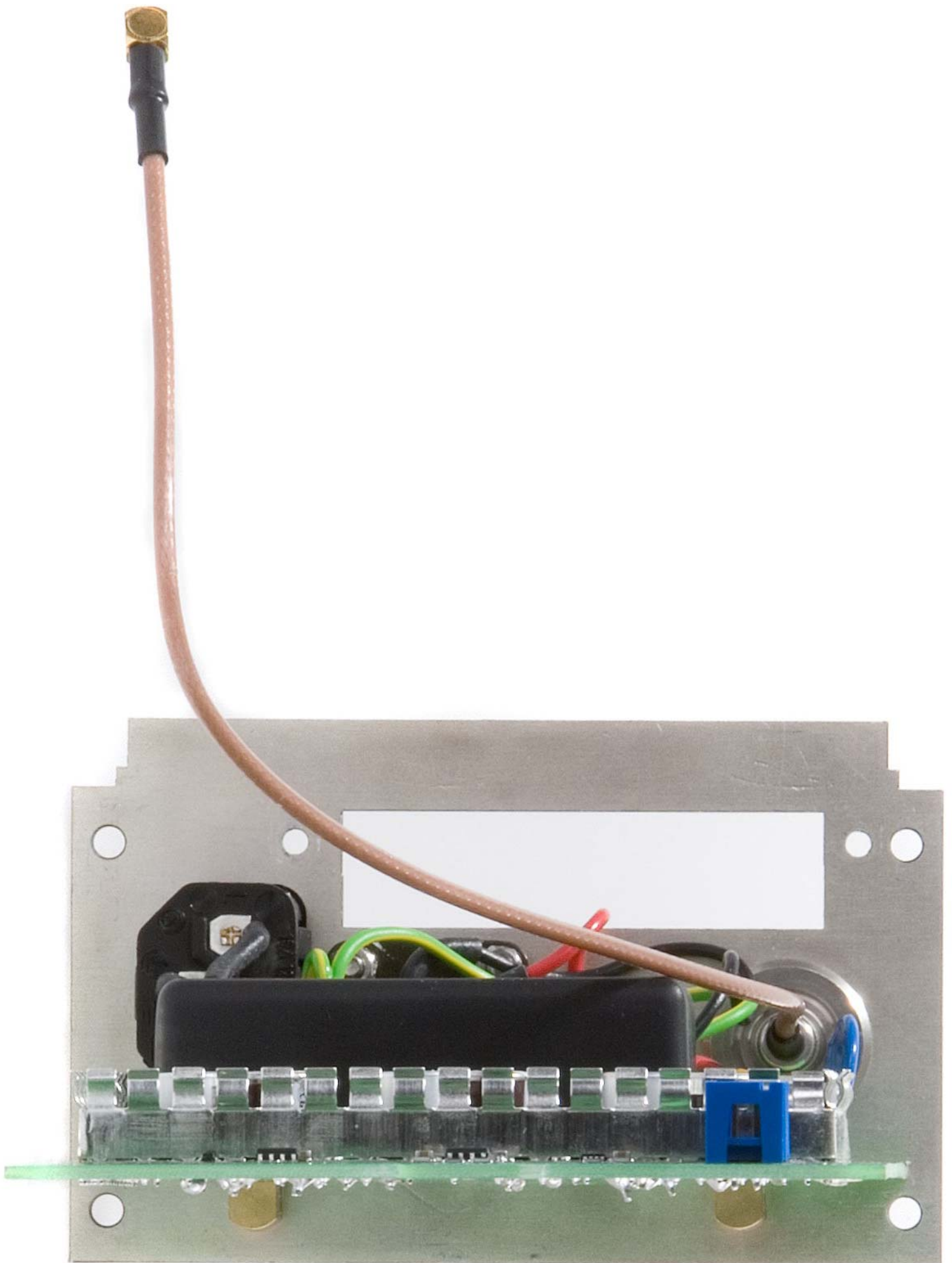
Caution
Shock Hazard

SCHAFFNER
RNF12-202
200V 20A
T054018

2n2

47
50V

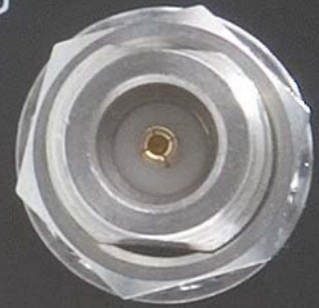




FCC ID

CE0470

115/230VAC



SN: 00009

This device complies with part 87 of the FCC rules.

REM

AUX 2

AUX 1

LAN

GND

DC

ANTENNA



