

MEASUREMENT 34

Type: Phone measurement (Complete)

Area scan resolution: dx=8mm,dy=8mm

Zoom scan resolution: dx=8mm, dy=8mm, dz=5mm

Date of measurement: 2013.1.5

Measurement duration: 7 minutes 40 seconds

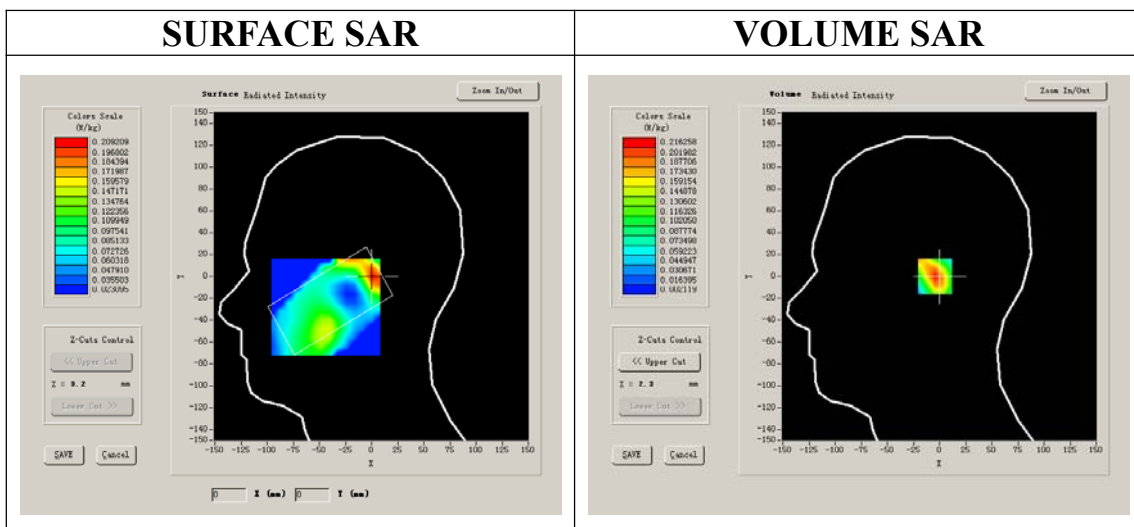
A. Experimental conditions.

Phantom File	sam_direct_droit2_surf8mm.txt
Phantom	Left head
Device Position	Tilt
Band	WCDMA1700
Channels	Low
Signal	CDMA

B. SAR Measurement Results

Lower Band SAR (Channel 1312):

Frequency (MHz)	1712.400000
Relative permittivity (real part)	41.631854
Conductivity (S/m)	0.912487
Power drift (%)	-0.380000
Ambient Temperature:	22.7°C
Liquid Temperature:	22.3°C
ConvF:	42.533, 36.791, 41.019
Crest factor:	1:1



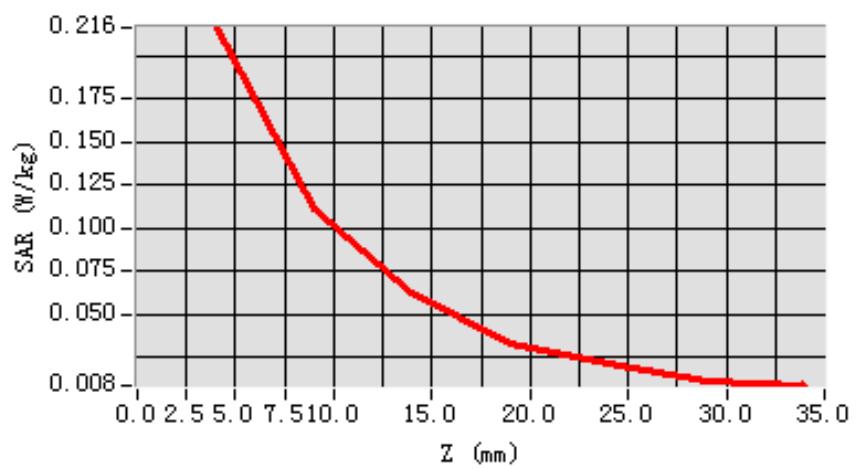
Maximum location: X=2.00, Y=0.00

SAR 10g (W/Kg)	0.104106
SAR 1g (W/Kg)	0.199783

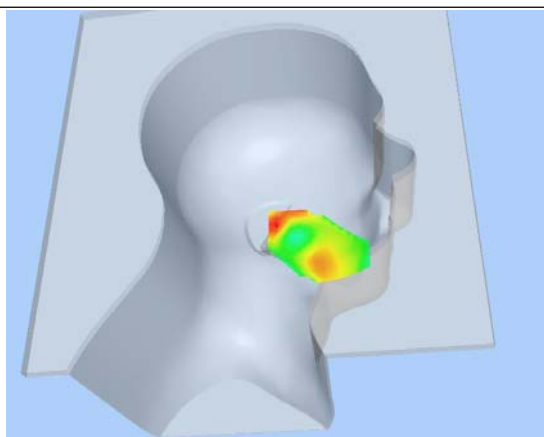
Z Axis Scan

Z (mm)	0.00	4.00	9.00	14.00	19.00	24.00	29.00
SAR (W/Kg)	0.0000	0.2163	0.1106	0.0618	0.0333	0.0211	0.0109

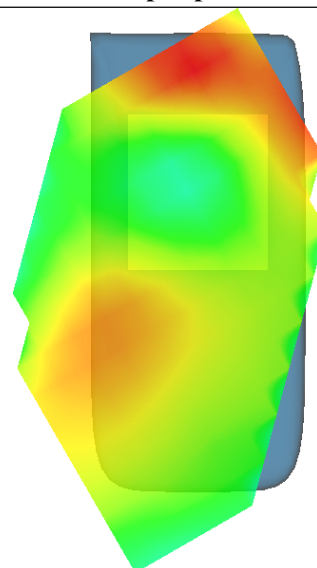
SAR, Z Axis Scan (X = 2, Y = 0)



3D scen shot



Hot spot position



MEASUREMENT 35

Type: Phone measurement (Complete)

Area scan resolution: dx=8mm,dy=8mm

Zoom scan resolution: dx=8mm, dy=8mm, dz=5mm

Date of measurement: 2013.1.5

Measurement duration: 9 minutes 15 seconds

A. Experimental conditions.

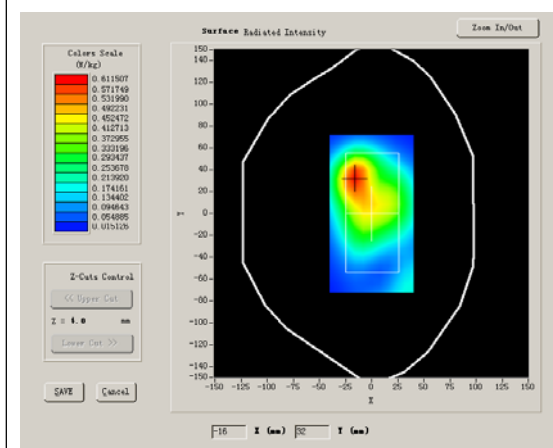
Phantom File	surf_sam_plan.txt
Phantom	Validation plane
Device Position	Body
Band	WCDMA1700
Channels	Low
Signal	CDMA

B. SAR Measurement Results

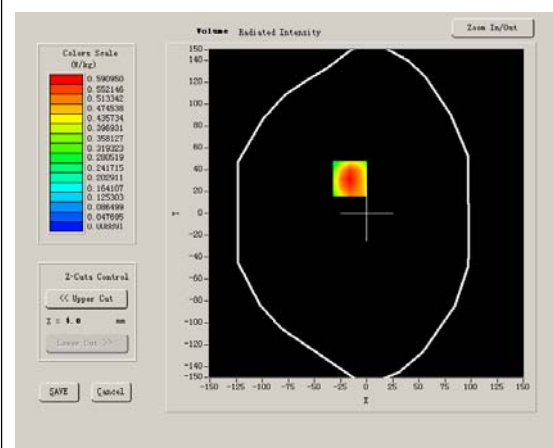
Lower Band SAR (Channel 1312):

Frequency (MHz)	1712.400000
Relative permittivity (real part)	53.283431
Conductivity (S/m)	1.508114
Power drift (%)	-0.030000
Ambient Temperature:	22.7°C
Liquid Temperature:	22.3°C
ConvF:	42.982, 37.514, 41.835
Crest factor:	1:1

SURFACE SAR



VOLUME SAR



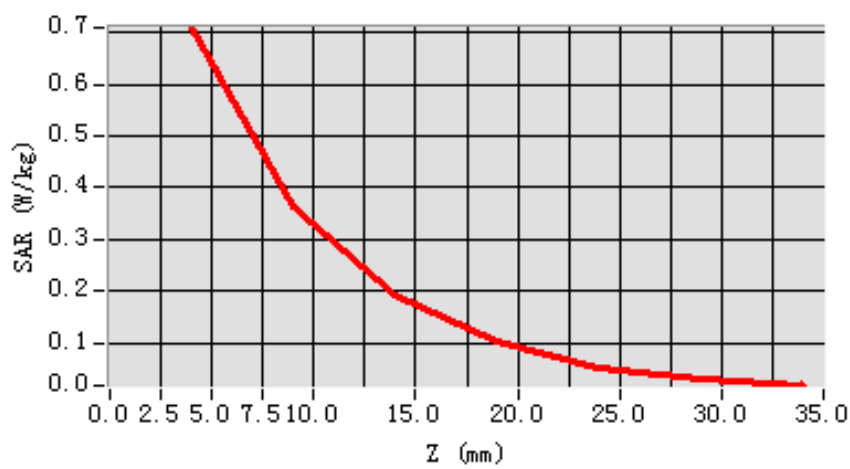
Maximum location: X=-16.00, Y=32.00

SAR 10g (W/Kg)	0.371300
SAR 1g (W/Kg)	0.677843

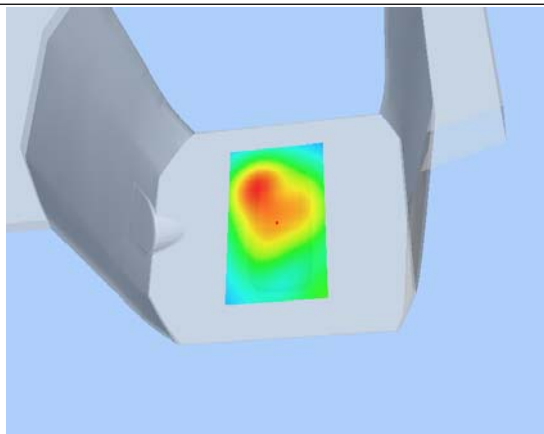
Z Axis Scan

Z (mm)	0.00	4.00	9.00	14.00	19.00	24.00	29.00
SAR (W/Kg)	0.0000	0.7092	0.3644	0.1928	0.1014	0.0527	0.0284

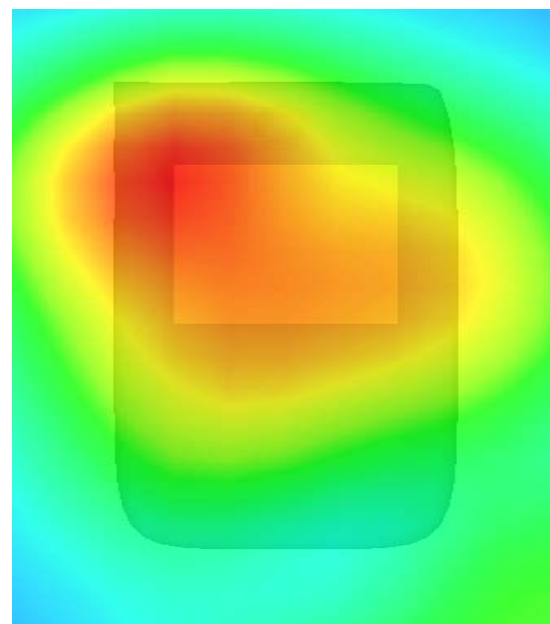
SAR, Z Axis Scan (X = -16, Y = 32)



3D scen shot



Hot spot position



MEASUREMENT 36

Type: Phone measurement (Complete)

Area scan resolution: dx=8mm,dy=8mm

Zoom scan resolution: dx=8mm, dy=8mm, dz=5mm

Date of measurement: 2013.1.5

Measurement duration: 9 minutes 16 seconds

A. Experimental conditions.

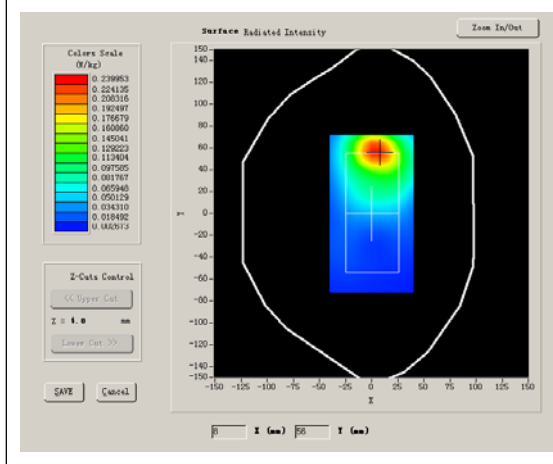
Phantom File	surf_sam_plan.txt
Phantom	Validation plane
Device Position	Body
Band	WCDMA1700
Channels	Low
Signal	CDMA

B. SAR Measurement Results

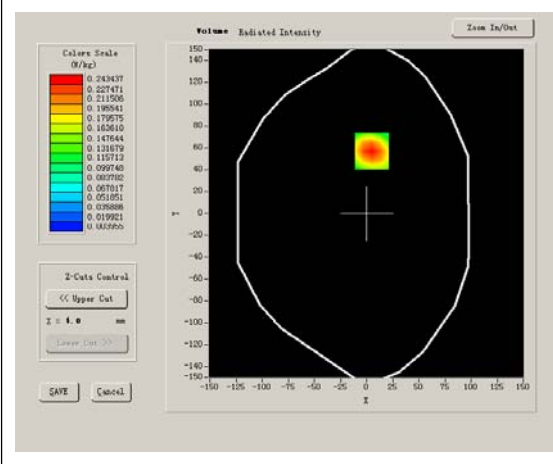
Lower Band SAR (Channel 1312):

Frequency (MHz)	1712.400000
Relative permittivity (real part)	53.283431
Conductivity (S/m)	1.508114
Power drift (%)	-1.390000
Ambient Temperature:	22.7°C
Liquid Temperature:	22.3°C
ConvF:	42.982, 37.514, 41.835
Crest factor:	1:1

SURFACE SAR



VOLUME SAR



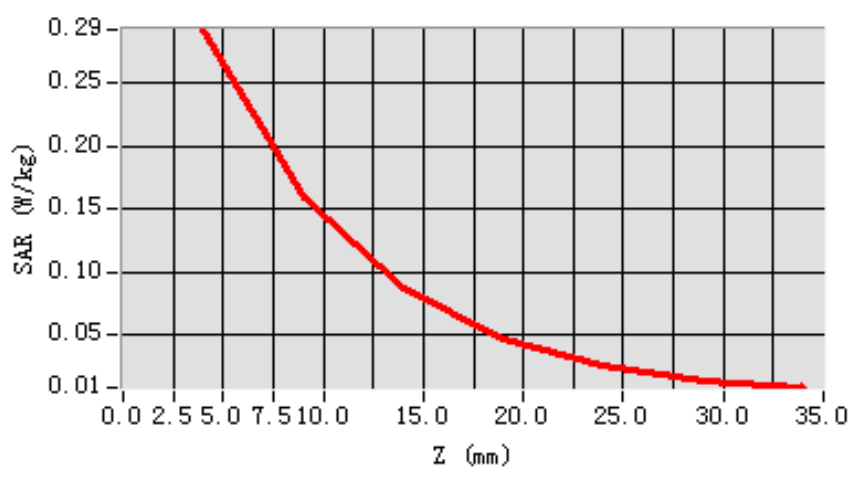
Maximum location: X=5.00, Y=57.00

SAR 10g (W/Kg)	0.152237
SAR 1g (W/Kg)	0.277080

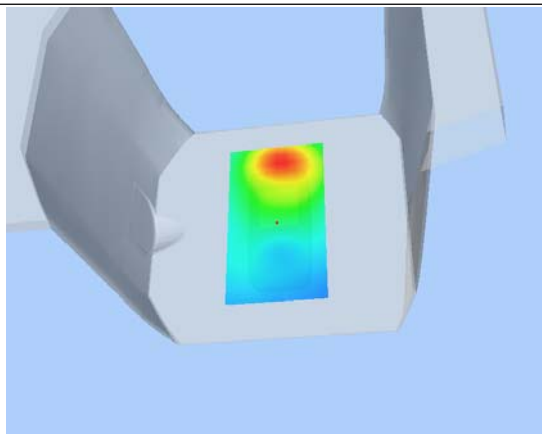
Z Axis Scan

Z (mm)	0.00	4.00	9.00	14.00	19.00	24.00	29.00
SAR (W/Kg)	0.0000	0.2921	0.1585	0.0864	0.0471	0.0258	0.0142

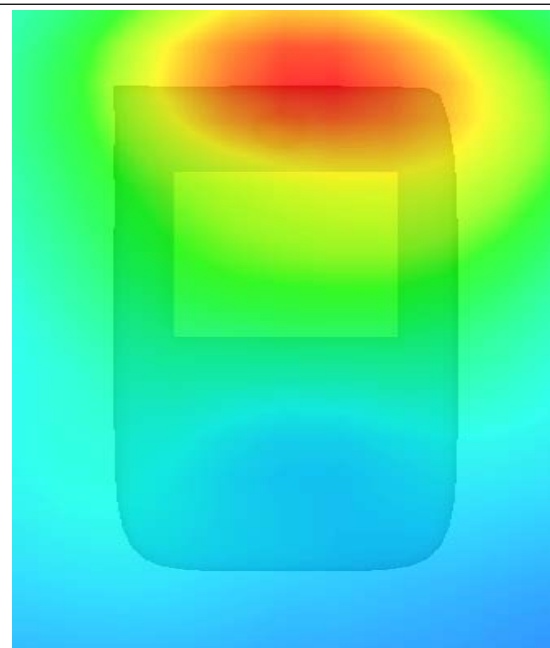
SAR, Z Axis Scan (X = 5, Y = 57)



3D scen shot



Hot spot position



MEASUREMENT 37

Type: Phone measurement (Complete)

Area scan resolution: dx=8mm,dy=8mm

Zoom scan resolution: dx=8mm, dy=8mm, dz=5mm

Date of measurement: 2013.1.5

Measurement duration: 9 minutes 16 seconds

A. Experimental conditions.

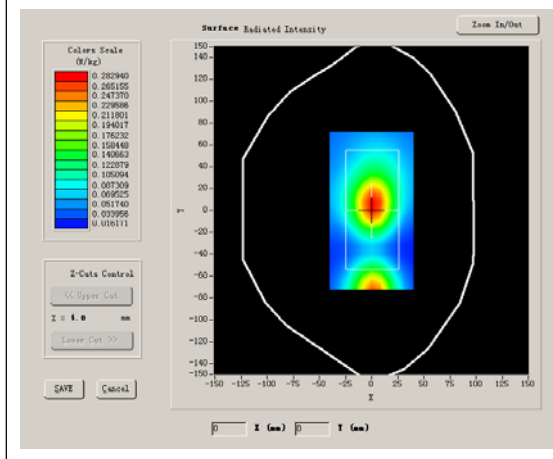
Phantom File	surf_sam_plan.txt
Phantom	Validation plane
Device Position	Body
Band	WCDMA1700
Channels	Low
Signal	CDMA

B. SAR Measurement Results

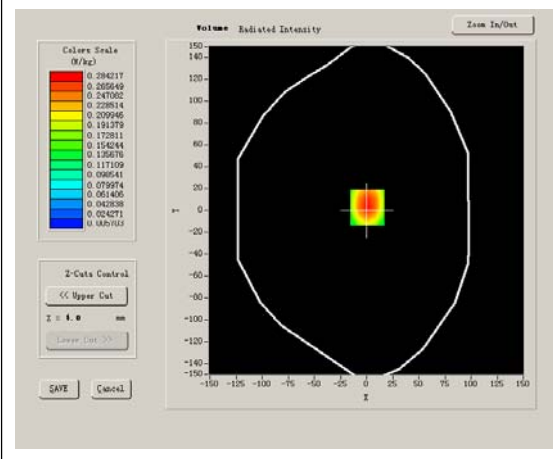
Lower Band SAR (Channel 1312):

Frequency (MHz)	1712.400000
Relative permittivity (real part)	53.283431
Conductivity (S/m)	1.508114
Power drift (%)	-2.190000
Ambient Temperature:	22.7°C
Liquid Temperature:	22.3°C
ConvF:	42.982, 37.514, 41.835
Crest factor:	1:1

SURFACE SAR



VOLUME SAR



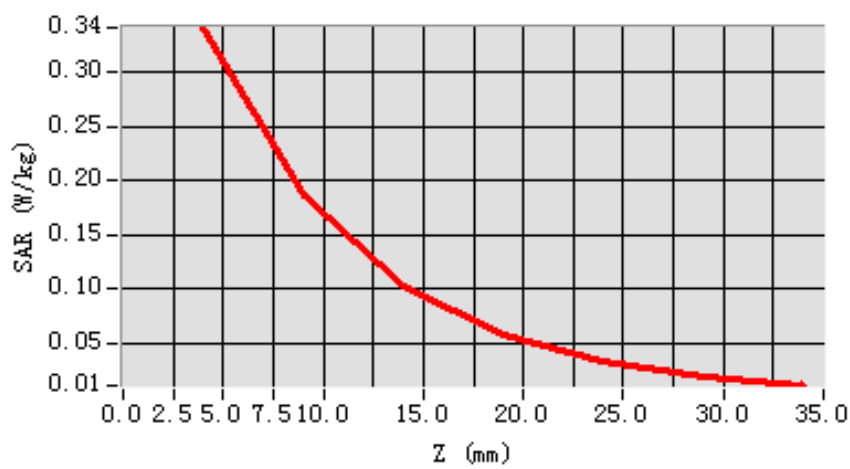
Maximum location: X=1.00, Y=3.00

SAR 10g (W/Kg)	0.181919
SAR 1g (W/Kg)	0.325592

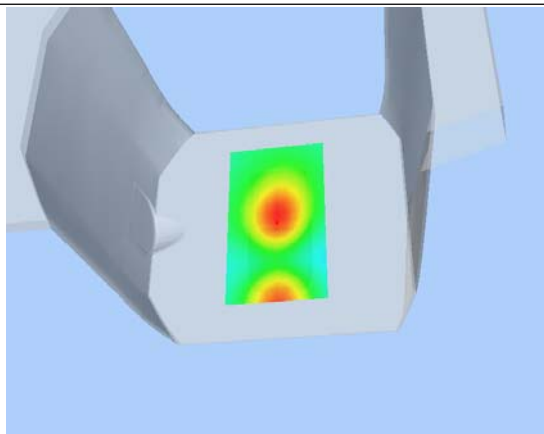
Z Axis Scan

Z (mm)	0.00	4.00	9.00	14.00	19.00	24.00	29.00
SAR (W/Kg)	0.0000	0.3411	0.1862	0.1029	0.0569	0.0326	0.0191

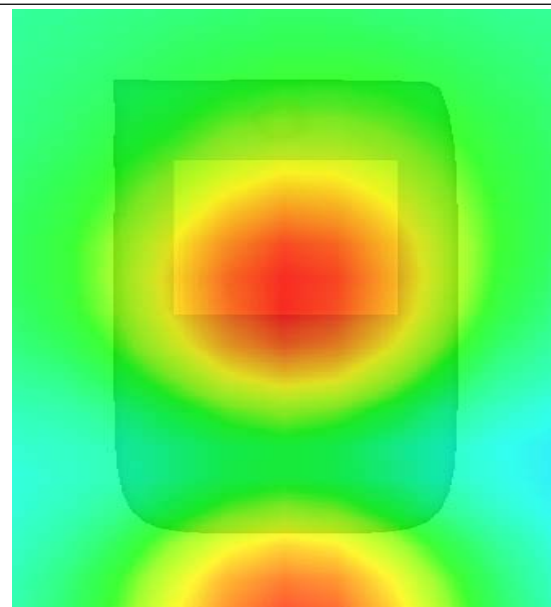
SAR, Z Axis Scan (X = 1, Y = 3)



3D scen shot



Hot spot position



MEASUREMENT 38

Type: Phone measurement (Complete)

Area scan resolution: dx=8mm,dy=8mm

Zoom scan resolution: dx=8mm, dy=8mm, dz=5mm

Date of measurement: 2013.1.5

Measurement duration: 9 minutes 16 seconds

A. Experimental conditions.

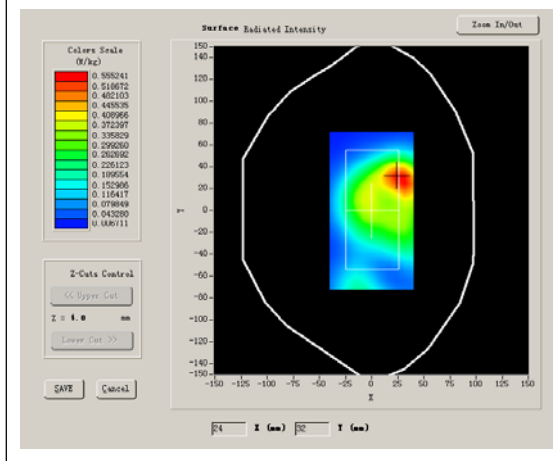
Phantom File	surf_sam_plan.txt
Phantom	Validation plane
Device Position	Body
Band	WCDMA1700
Channels	Low
Signal	CDMA

B. SAR Measurement Results

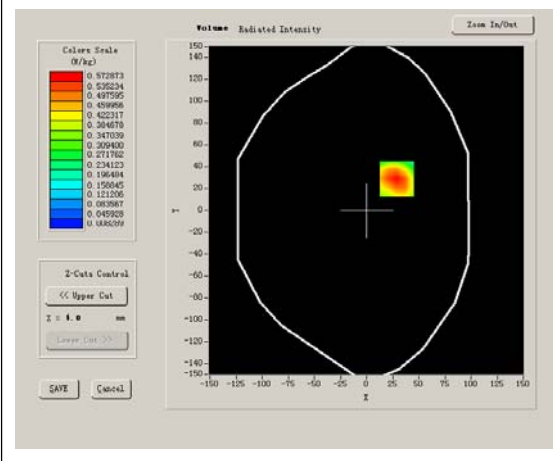
Lower Band SAR (Channel 1312):

Frequency (MHz)	1712.400000
Relative permittivity (real part)	53.283431
Conductivity (S/m)	1.508114
Power drift (%)	-1.390000
Ambient Temperature:	22.7°C
Liquid Temperature:	22.3°C
ConvF:	42.982, 37.514, 41.835
Crest factor:	1:1

SURFACE SAR



VOLUME SAR



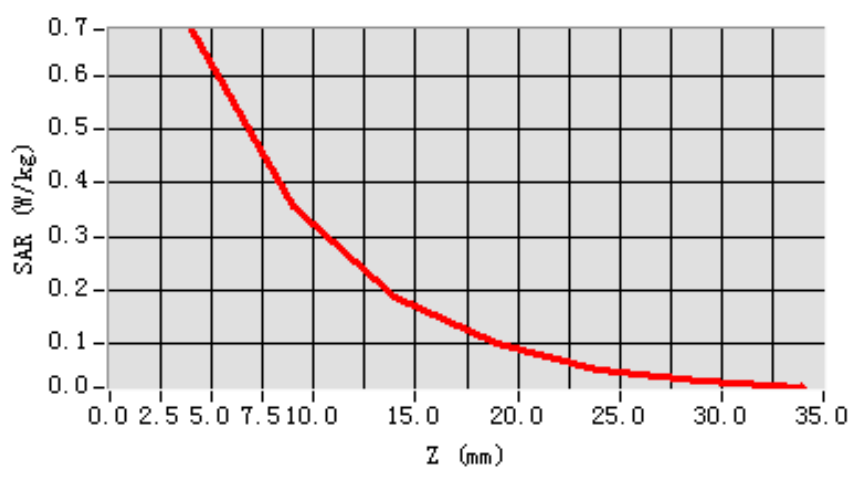
Maximum location: X=29.00, Y=29.00

SAR 10g (W/Kg)	0.354199
SAR 1g (W/Kg)	0.654224

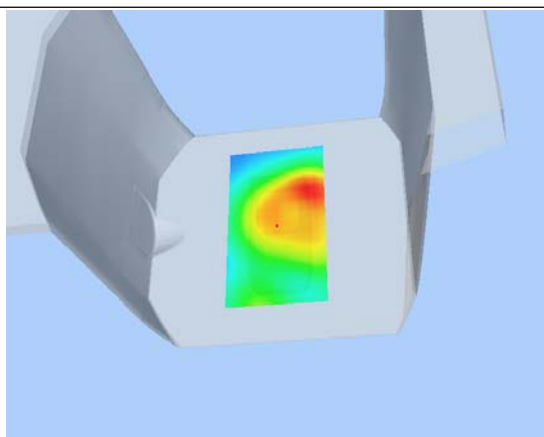
Z Axis Scan

Z (mm)	0.00	4.00	9.00	14.00	19.00	24.00	29.00
SAR (W/Kg)	0.0000	0.6875	0.3553	0.1870	0.1000	0.0519	0.0280

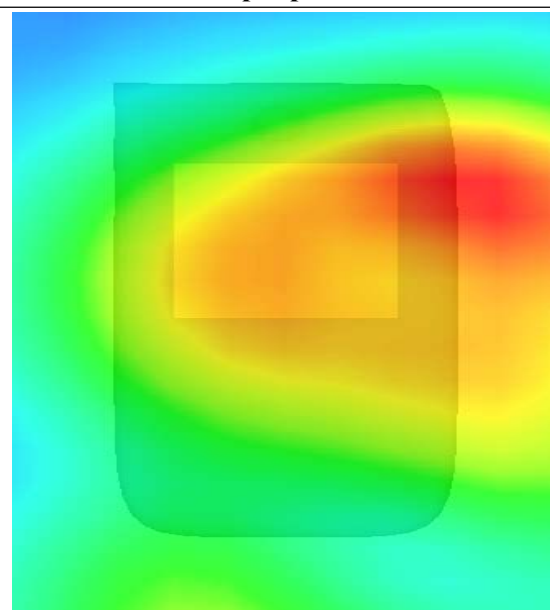
SAR, Z Axis Scan (X = 29, Y = 29)



3D scen shot



Hot spot position



MEASUREMENT 39

Type: Phone measurement (Complete)

Area scan resolution: dx=8mm,dy=8mm

Zoom scan resolution: dx=8mm, dy=8mm, dz=5mm

Date of measurement: 2013.1.5

Measurement duration: 8 minutes 9 seconds

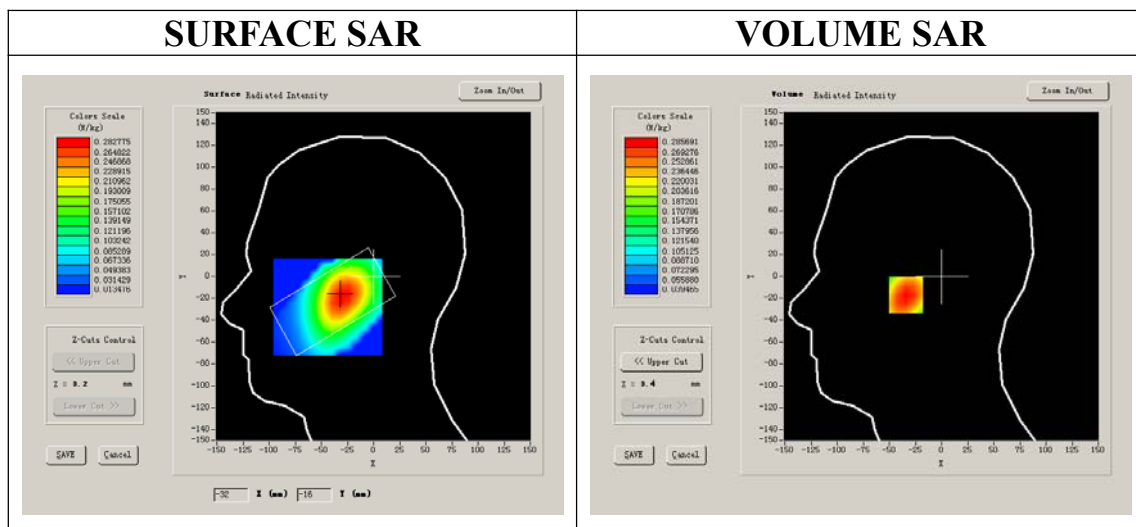
A. Experimental conditions.

Phantom File	sam_direct_droit2_surf8mm.txt
Phantom	Right head
Device Position	Cheek
Band	WCDMA1900
Channels	Middle
Signal	CDMA

B. SAR Measurement Results

Middle Band SAR (Channel 9400):

Frequency (MHz)	1880.000000
Relative permittivity (real part)	41.253820
Conductivity (S/m)	1.415742
Power drift (%)	0.280000
Ambient Temperature:	22.7°C
Liquid Temperature:	22.3°C
ConvF:	40.136,34.843,38.721
Crest factor:	1:1



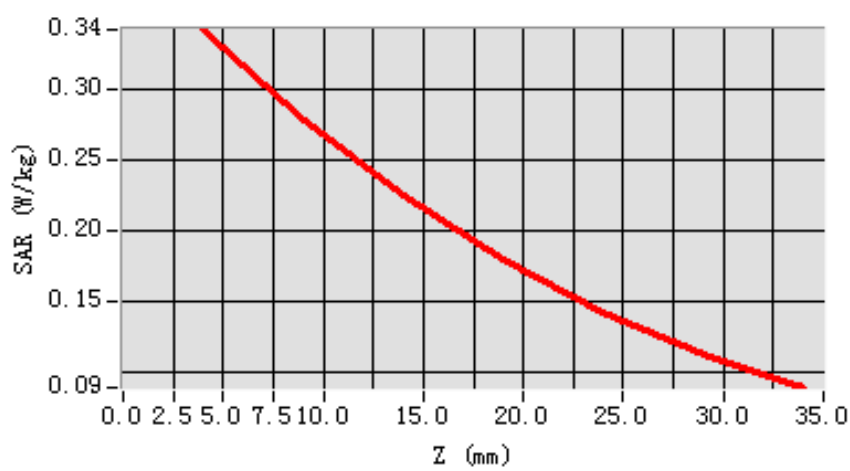
Maximum location: X=-29.00, Y=-17.00

SAR 10g (W/Kg)	0.253182
SAR 1g (W/Kg)	0.331531

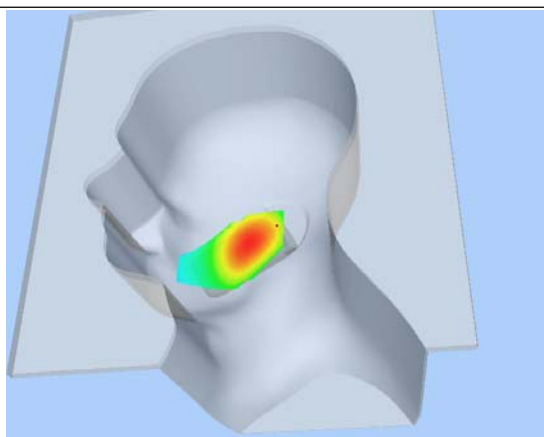
Z Axis Scan

Z (mm)	0.00	4.00	9.00	14.00	19.00	24.00	29.00
SAR (W/Kg)	0.0000	0.3429	0.2787	0.2248	0.1796	0.1432	0.1135

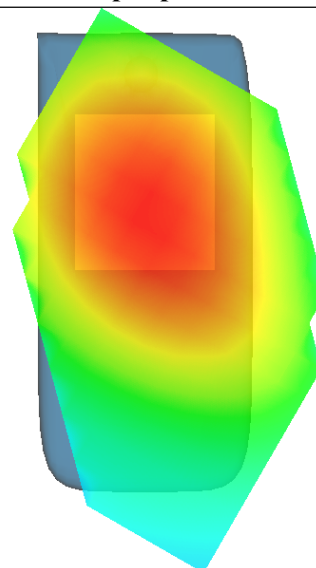
SAR, Z Axis Scan (X = -29, Y = -17)



3D scen shot



Hot spot position



MEASUREMENT 40

Type: Phone measurement (Complete)

Area scan resolution: dx=8mm,dy=8mm

Zoom scan resolution: dx=8mm, dy=8mm, dz=5mm

Date of measurement: 2013.1.5

Measurement duration: 7 minutes 28 seconds

A. Experimental conditions.

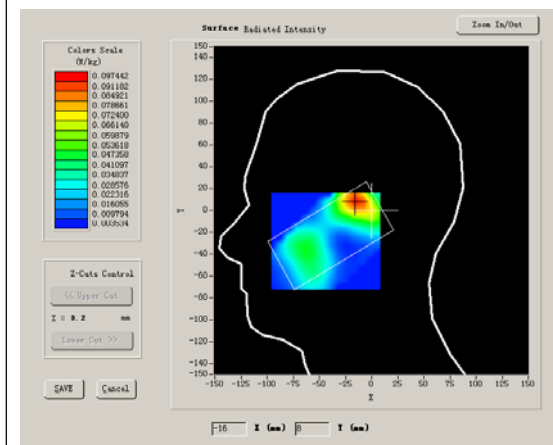
Phantom File	sam_direct_droit2_surf8mm.txt
Phantom	Right head
Device Position	Tilt
Band	WCDMA1900
Channels	Middle
Signal	CDMA

B. SAR Measurement Results

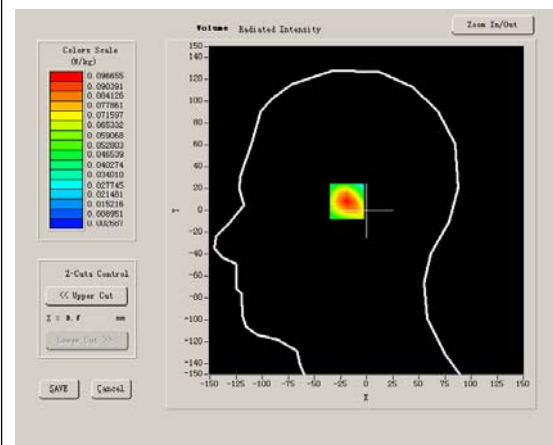
Middle Band SAR (Channel 9400):

Frequency (MHz)	1880.000000
Relative permittivity (real part)	41.253820
Conductivity (S/m)	1.415742
Power drift (%)	-0.160000
Ambient Temperature:	22.7°C
Liquid Temperature:	22.3°C
ConvF:	40.136,34.843,38.721
Crest factor:	1:1

SURFACE SAR



VOLUME SAR



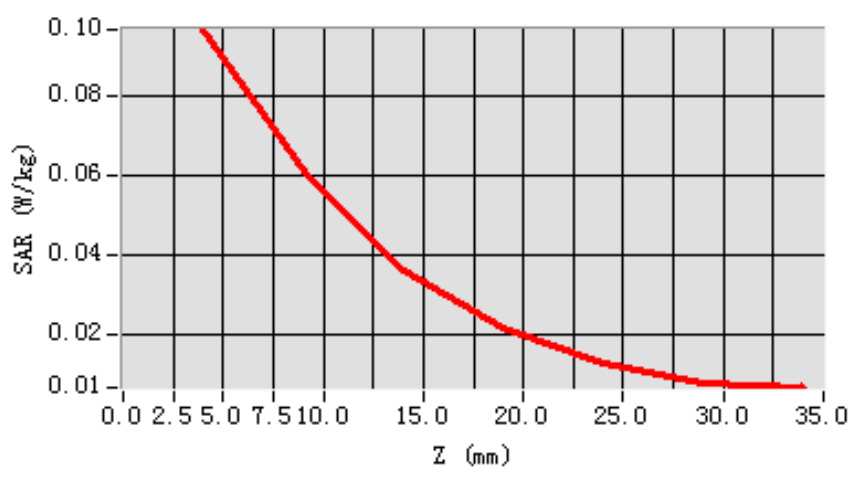
Maximum location: X=-15.00, Y=9.00

SAR 10g (W/Kg)	0.052064
SAR 1g (W/Kg)	0.091057

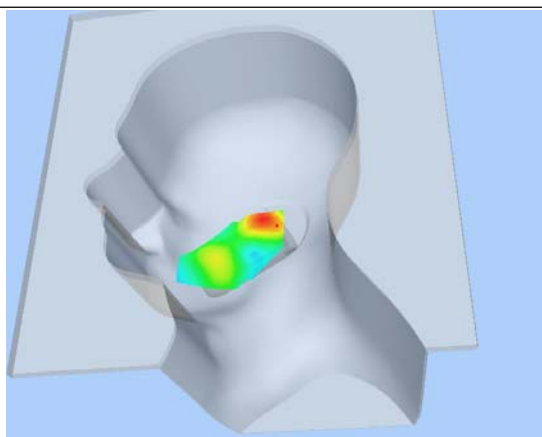
Z Axis Scan

Z (mm)	0.00	4.00	9.00	14.00	19.00	24.00	29.00
SAR (W/Kg)	0.0000	0.0967	0.0609	0.0359	0.0216	0.0124	0.0073

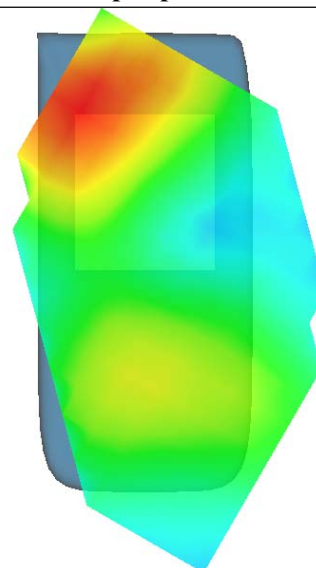
SAR, Z Axis Scan (X = -15, Y = 9)



3D scen shot



Hot spot position



MEASUREMENT 41

Type: Phone measurement (Complete)

Area scan resolution: dx=8mm,dy=8mm

Zoom scan resolution: dx=8mm, dy=8mm, dz=5mm

Date of measurement: 2013.1.5

Measurement duration: 8 minutes 7 seconds

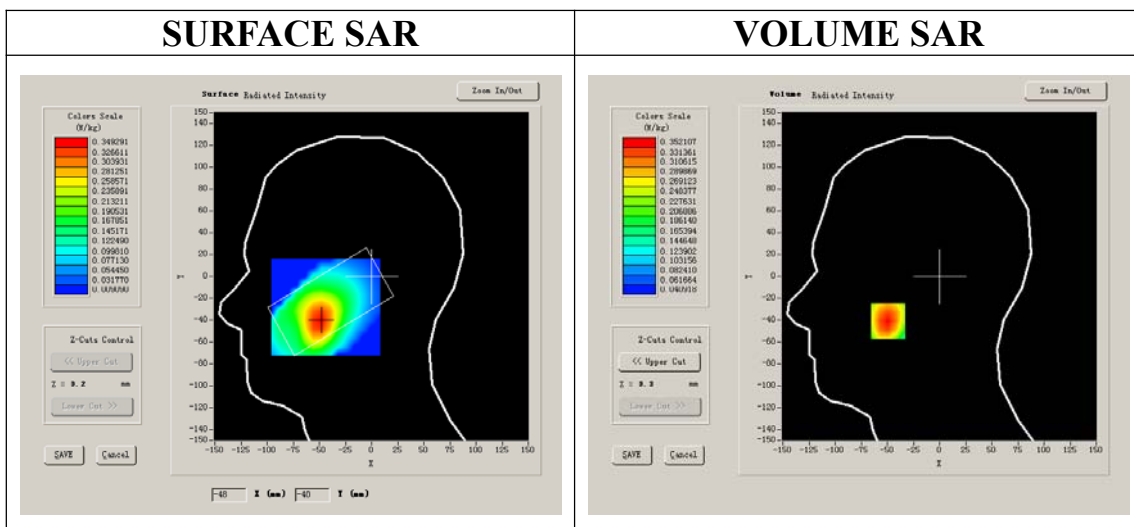
A. Experimental conditions.

Phantom File	sam_direct_droit2_surf8mm.txt
Phantom	Left head
Device Position	Cheek
Band	WCDMA1900
Channels	Middle
Signal	CDMA

B. SAR Measurement Results

Middle Band SAR (Channel 9400):

Frequency (MHz)	1880.000000
Relative permittivity (real part)	41.253820
Conductivity (S/m)	1.415742
Power drift (%)	-0.500000
Ambient Temperature:	22.7°C
Liquid Temperature:	22.3°C
ConvF:	40.136,34.843,38.721
Crest factor:	1:1



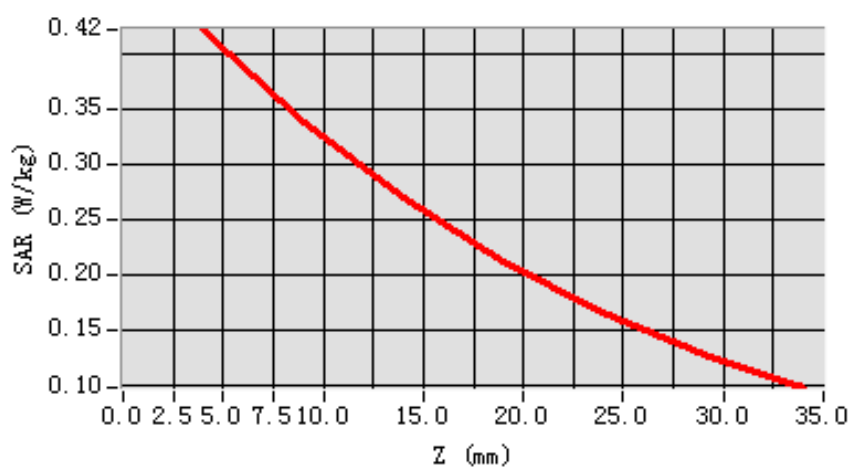
Maximum location: X=-49.00, Y=-41.00

SAR 10g (W/Kg)	0.298427
SAR 1g (W/Kg)	0.404916

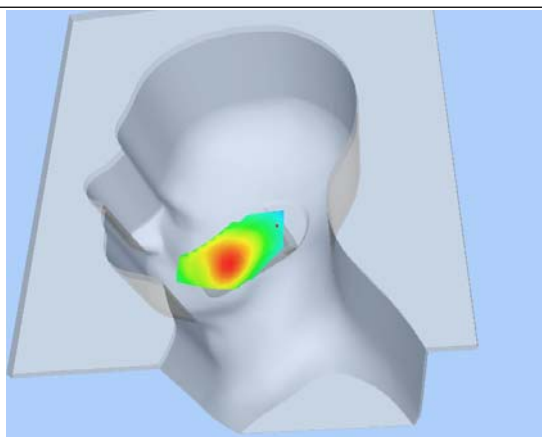
Z Axis Scan

Z (mm)	0.00	4.00	9.00	14.00	19.00	24.00	29.00
SAR (W/Kg)	0.0000	0.4226	0.3380	0.2703	0.2126	0.1656	0.1281

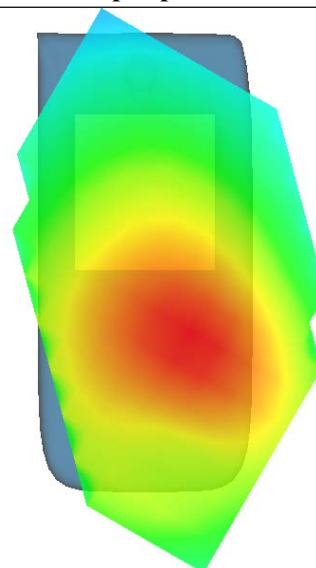
SAR, Z Axis Scan (X = -49, Y = -41)



3D scen shot



Hot spot position



MEASUREMENT 42

Type: Phone measurement (Complete)

Area scan resolution: dx=8mm,dy=8mm

Zoom scan resolution: dx=8mm, dy=8mm, dz=5mm

Date of measurement: 2013.1.5

Measurement duration: 7 minutes 30 seconds

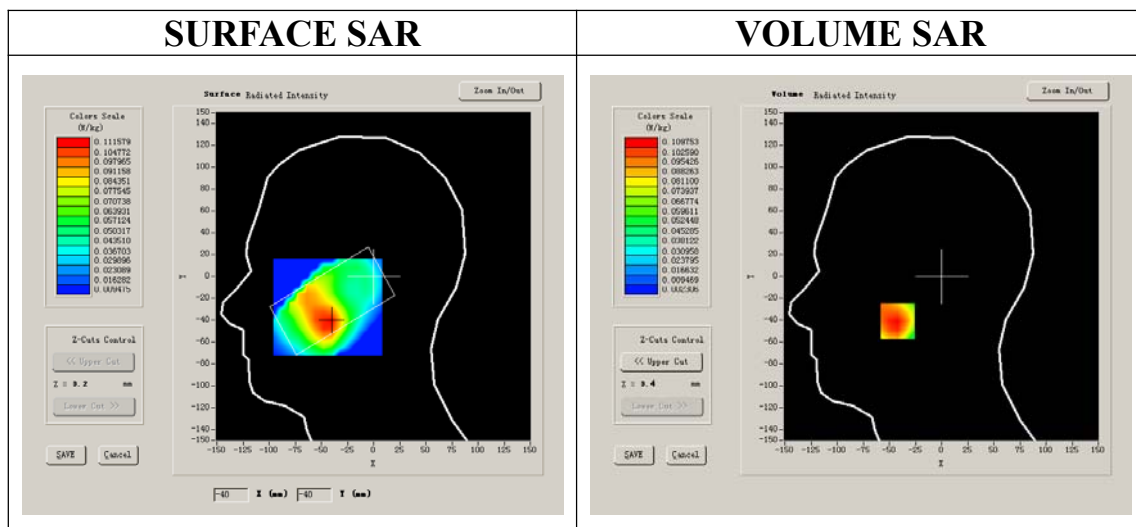
A. Experimental conditions.

Phantom File	sam_direct_droit2_surf8mm.txt
Phantom	Left head
Device Position	Tilt
Band	WCDMA1900
Channels	Middle
Signal	CDMA

B. SAR Measurement Results

Middle Band SAR (Channel 9400):

Frequency (MHz)	1880.000000
Relative permittivity (real part)	41.253820
Conductivity (S/m)	1.415742
Power drift (%)	0.190000
Ambient Temperature:	22.7°C
Liquid Temperature:	22.3°C
ConvF:	40.136,34.843,38.721
Crest factor:	1:1



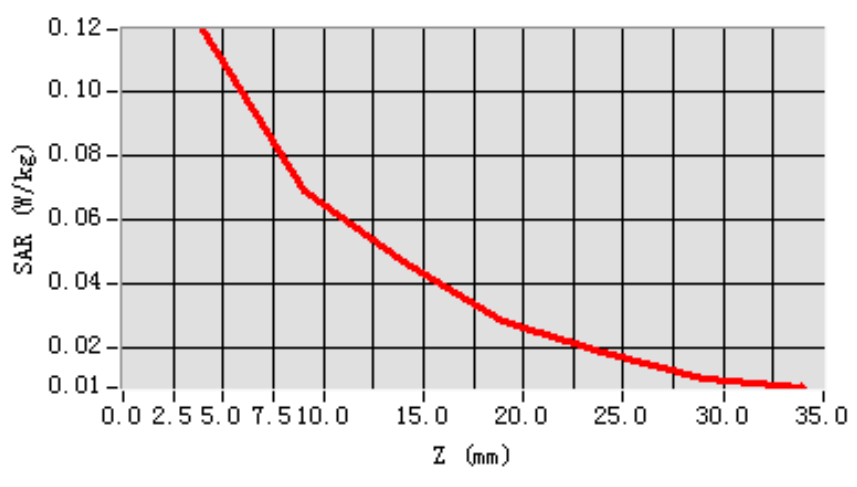
Maximum location: X=-42.00, Y=-41.00

SAR 10g (W/Kg)	0.069921
SAR 1g (W/Kg)	0.115806

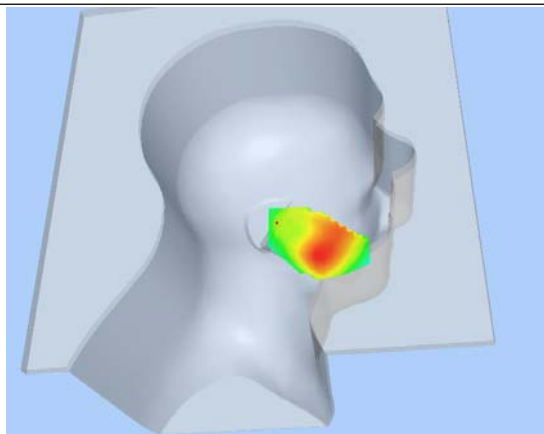
Z Axis Scan

Z (mm)	0.00	4.00	9.00	14.00	19.00	24.00	29.00
SAR (W/Kg)	0.0000	0.1195	0.0694	0.0473	0.0287	0.0188	0.0107

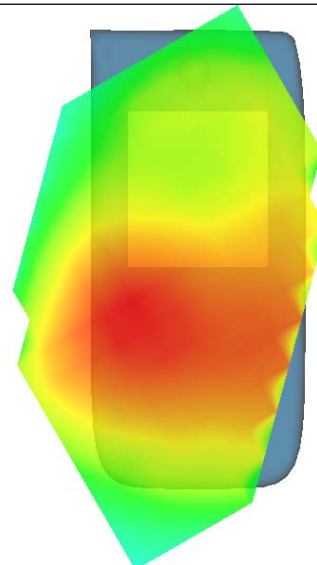
SAR, Z Axis Scan (X = -42, Y = -41)



3D scen shot



Hot spot position



MEASUREMENT 43

Type: Phone measurement (Complete)

Area scan resolution: dx=8mm,dy=8mm

Zoom scan resolution: dx=8mm, dy=8mm, dz=5mm

Date of measurement: 2013.1.5

Measurement duration: 9 minutes 7 seconds

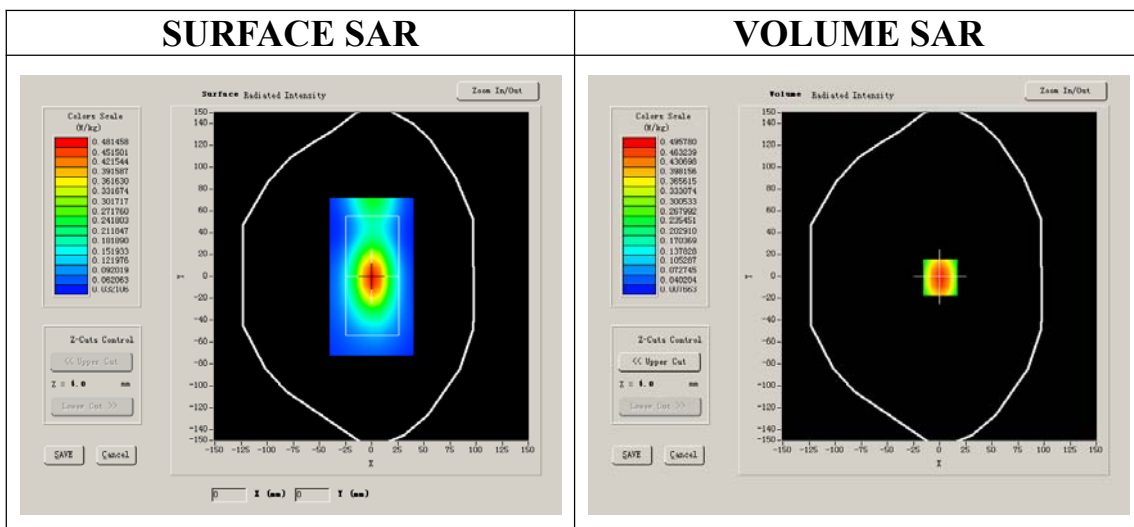
A. Experimental conditions.

Phantom File	surf_sam_plan.txt
Phantom	Validation plane
Device Position	Body
Band	WCDMA1900
Channels	Middle
Signal	CDMA

B. SAR Measurement Results

Middle Band SAR (Channel 9400):

Frequency (MHz)	1880.000000
Relative permittivity (real part)	53.283431
Conductivity (S/m)	1.508114
Power drift (%)	0.060000
Ambient Temperature:	22.7°C
Liquid Temperature:	22.3°C
ConvF:	40.625,34.773,38.535
Crest factor:	1:1



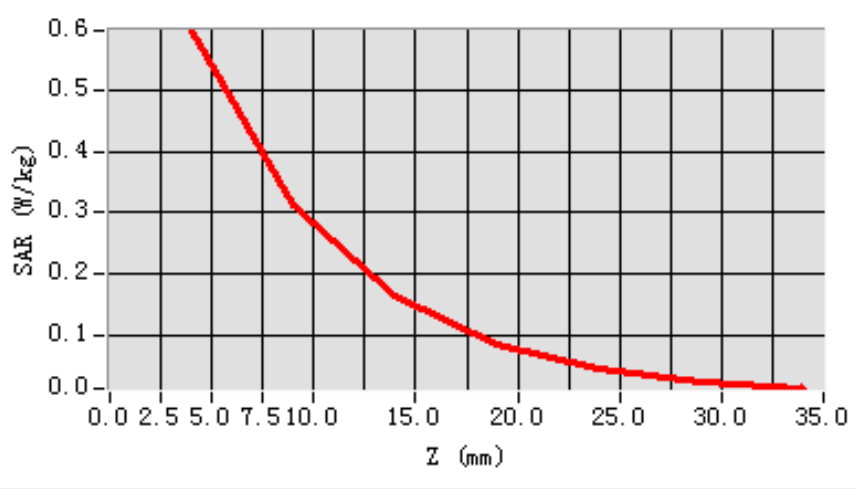
Maximum location: X=1.00, Y=-1.00

SAR 10g (W/Kg)	0.307508
SAR 1g (W/Kg)	0.565005

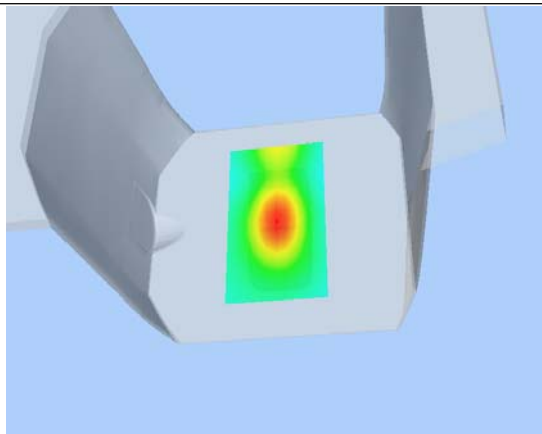
Z Axis Scan

Z (mm)	0.00	4.00	9.00	14.00	19.00	24.00	29.00
SAR (W/Kg)	0.0000	0.5950	0.3130	0.1646	0.0868	0.0485	0.0261

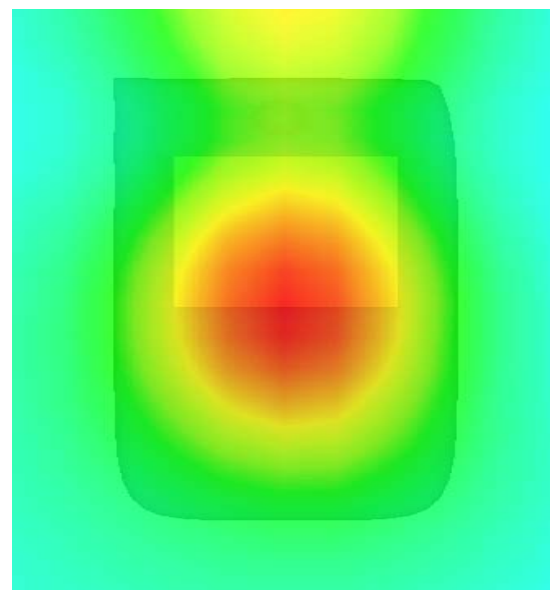
SAR, Z Axis Scan (X = 1, Y = -1)



3D scene shot



Hot spot position



MEASUREMENT 44

Type: Phone measurement (Complete)

Area scan resolution: dx=8mm,dy=8mm

Zoom scan resolution: dx=8mm, dy=8mm, dz=5mm

Date of measurement: 2013.1.5

Measurement duration: 9 minutes 14 seconds

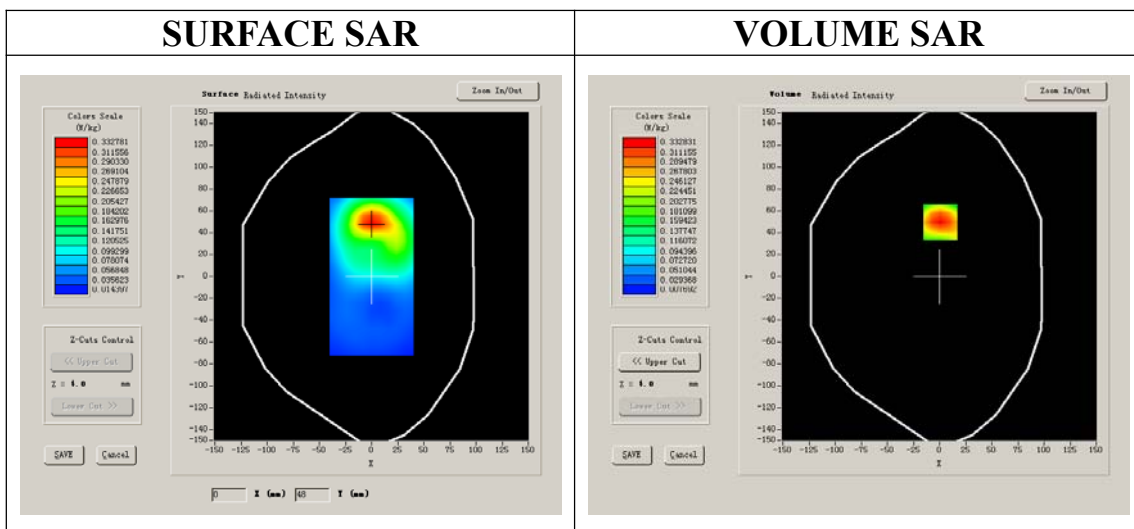
A. Experimental conditions.

Phantom File	surf_sam_plan.txt
Phantom	Validation plane
Device Position	Body
Band	WCDMA1900
Channels	Middle
Signal	CDMA

B. SAR Measurement Results

Middle Band SAR (Channel 9400):

Frequency (MHz)	1880.000000
Relative permittivity (real part)	53.283431
Conductivity (S/m)	1.508114
Power drift (%)	0.080000
Ambient Temperature:	22.7°C
Liquid Temperature:	22.3°C
ConvF:	40.625,34.773,38.535
Crest factor:	1:1



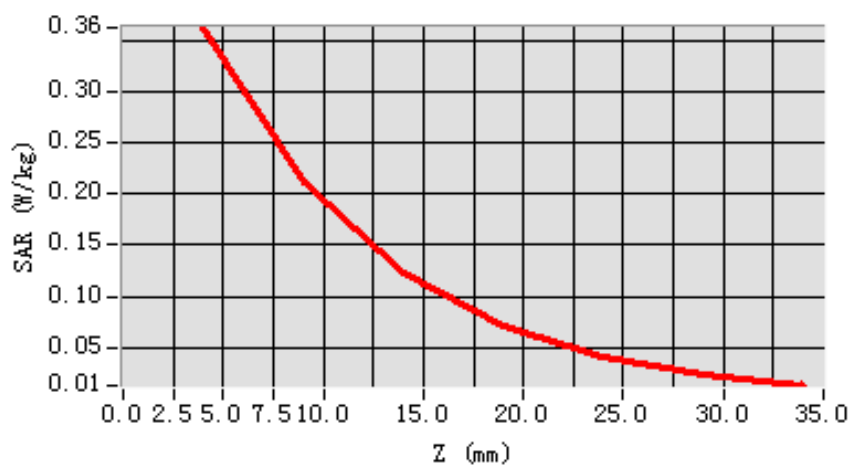
Maximum location: X=1.00, Y=50.00

SAR 10g (W/Kg)	0.197625
SAR 1g (W/Kg)	0.346172

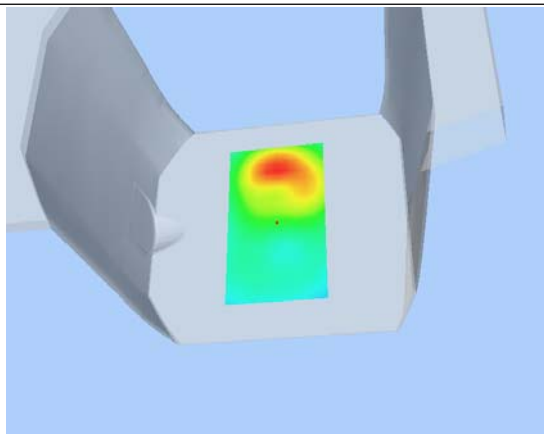
Z Axis Scan

Z (mm)	0.00	4.00	9.00	14.00	19.00	24.00	29.00
SAR (W/Kg)	0.0000	0.3624	0.2107	0.1220	0.0711	0.0413	0.0232

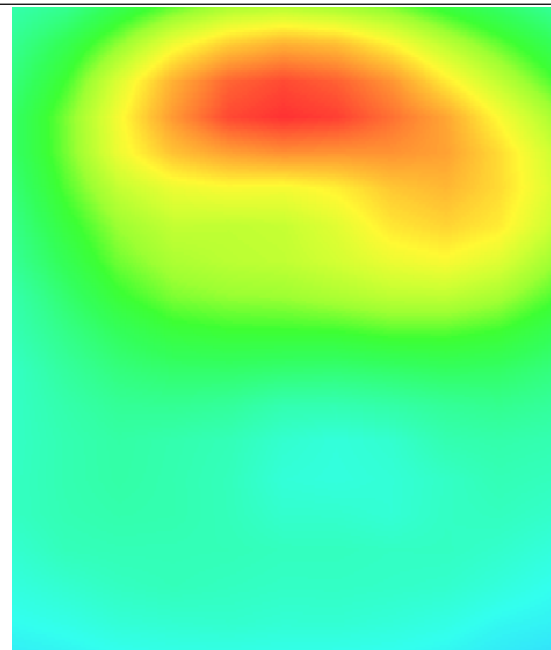
SAR, Z Axis Scan (X = 1, Y = 50)



3D scen shot



Hot spot position



MEASUREMENT 45

Type: Phone measurement (Complete)

Area scan resolution: dx=8mm,dy=8mm

Zoom scan resolution: dx=8mm, dy=8mm, dz=5mm

Date of measurement: 2013.1.5

Measurement duration: 9 minutes 14 seconds

A. Experimental conditions.

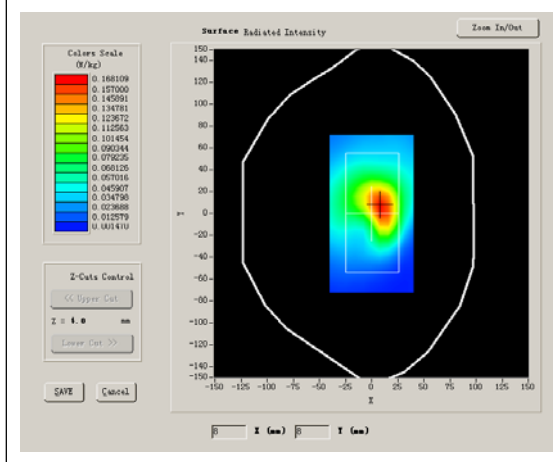
Phantom File	surf_sam_plan.txt
Phantom	Validation plane
Device Position	Body
Band	WCDMA1900
Channels	Middle
Signal	CDMA

B. SAR Measurement Results

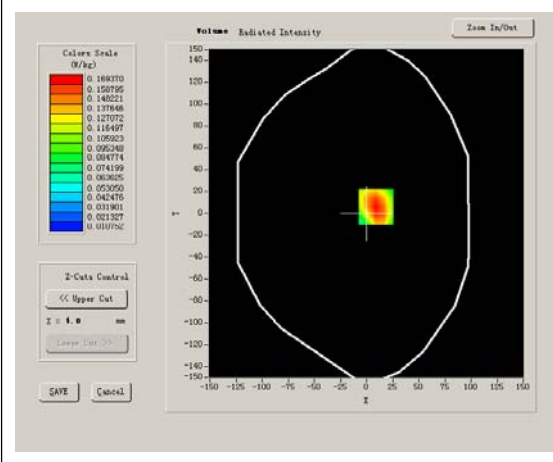
Middle Band SAR (Channel 9400):

Frequency (MHz)	1880.000000
Relative permittivity (real part)	53.283431
Conductivity (S/m)	1.508114
Power drift (%)	-0.320000
Ambient Temperature:	22.7°C
Liquid Temperature:	22.3°C
ConvF:	40.625,34.773,38.535
Crest factor:	1:1

SURFACE SAR



VOLUME SAR



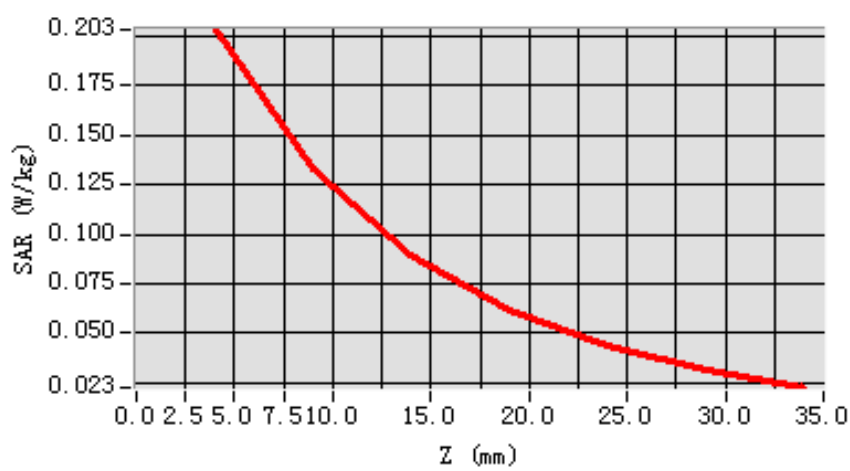
Maximum location: X=9.00, Y=6.00

SAR 10g (W/Kg)	0.122510
SAR 1g (W/Kg)	0.193265

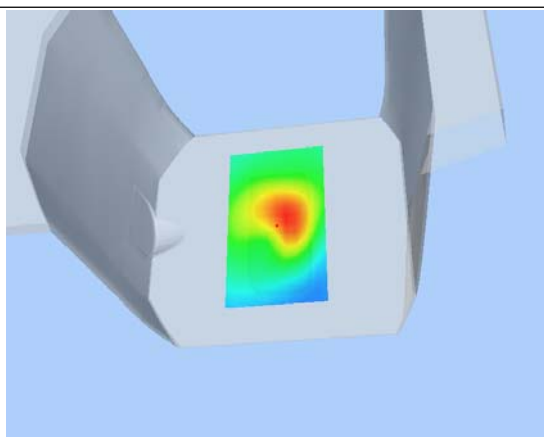
Z Axis Scan

Z (mm)	0.00	4.00	9.00	14.00	19.00	24.00	29.00
SAR (W/Kg)	0.0000	0.2033	0.1328	0.0897	0.0619	0.0434	0.0313

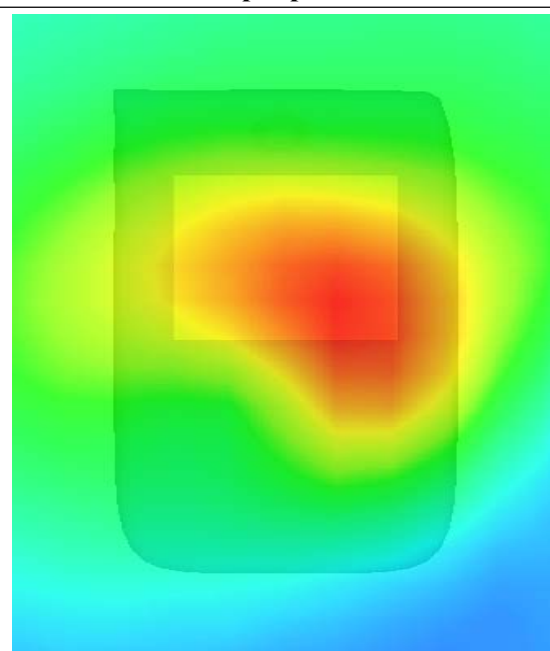
SAR, Z Axis Scan (X = 9, Y = 6)



3D scen shot



Hot spot position



MEASUREMENT 46

Type: Phone measurement (Complete)

Area scan resolution: dx=8mm,dy=8mm

Zoom scan resolution: dx=8mm, dy=8mm, dz=5mm

Date of measurement: 2013.1.5

Measurement duration: 9 minutes 14 seconds

A. Experimental conditions.

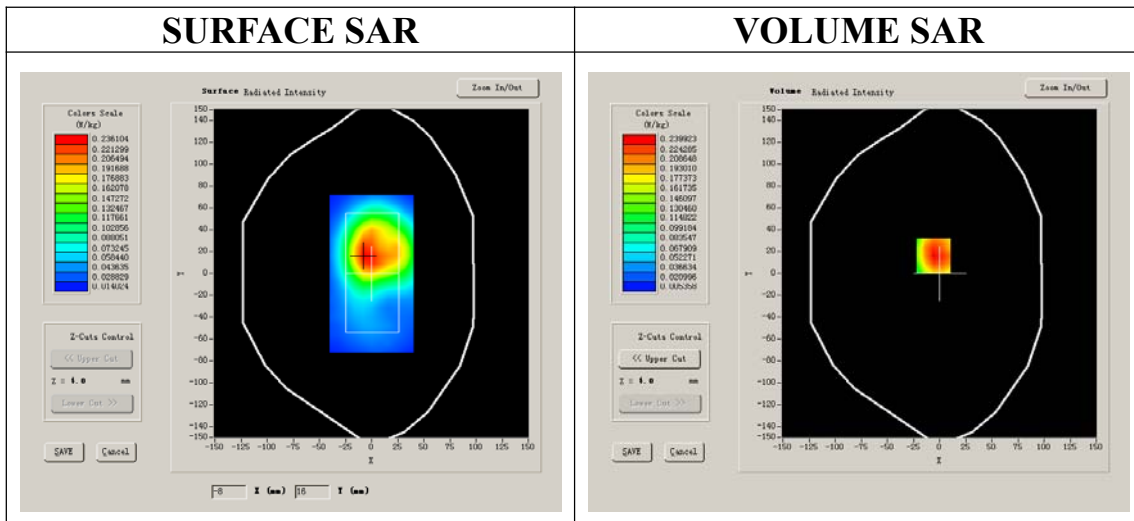
Phantom File	surf_sam_plan.txt
Phantom	Validation plane
Device Position	Body
Band	WCDMA1900
Channels	Middle
Signal	CDMA

B. SAR Measurement Results

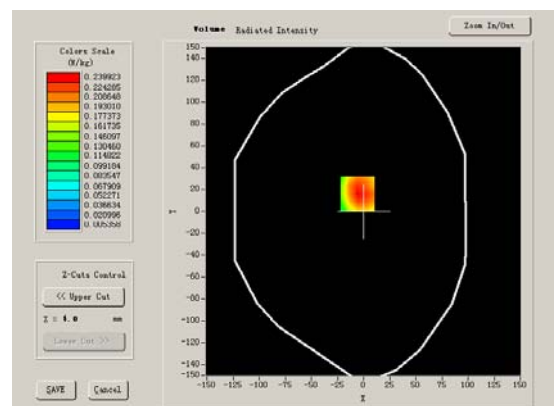
Middle Band SAR (Channel 9400):

Frequency (MHz)	1880.000000
Relative permittivity (real part)	53.283431
Relative permittivity	15.877050
Conductivity (S/m)	1.508114
Power drift (%)	-0.710000
Ambient Temperature:	22.7°C
Liquid Temperature:	22.3°C
ConvF:	40.625,34.773,38.535
Crest factor:	1:1

SURFACE SAR



VOLUME SAR



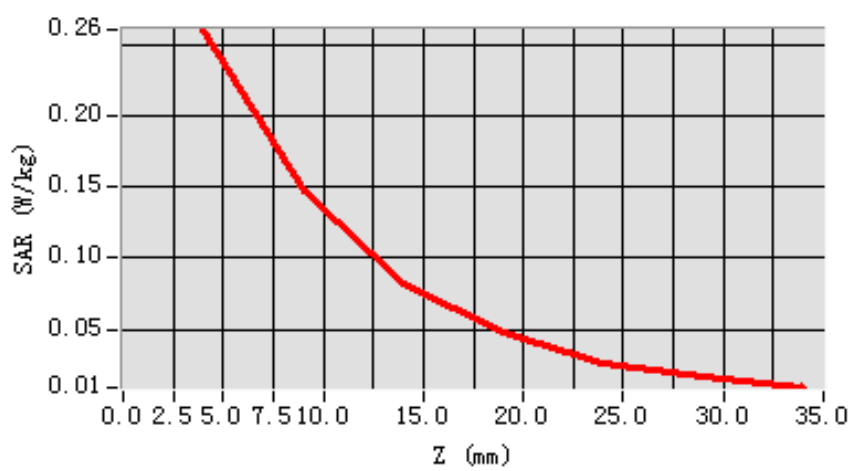
Maximum location: X=-6.00, Y=16.00

SAR 10g (W/Kg)	0.144572
SAR 1g (W/Kg)	0.250241

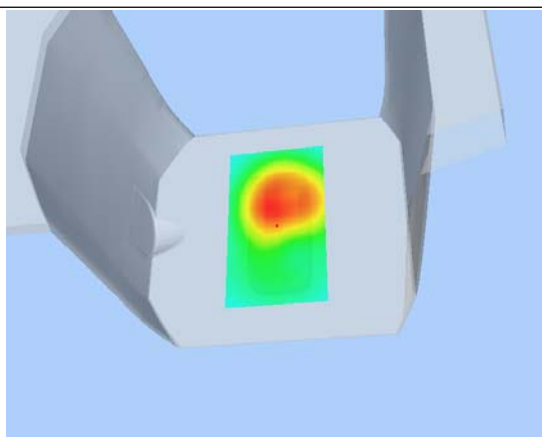
Z Axis Scan

Z (mm)	0.00	4.00	9.00	14.00	19.00	24.00	29.00
SAR (W/Kg)	0.0000	0.2613	0.1478	0.0825	0.0479	0.0263	0.0164

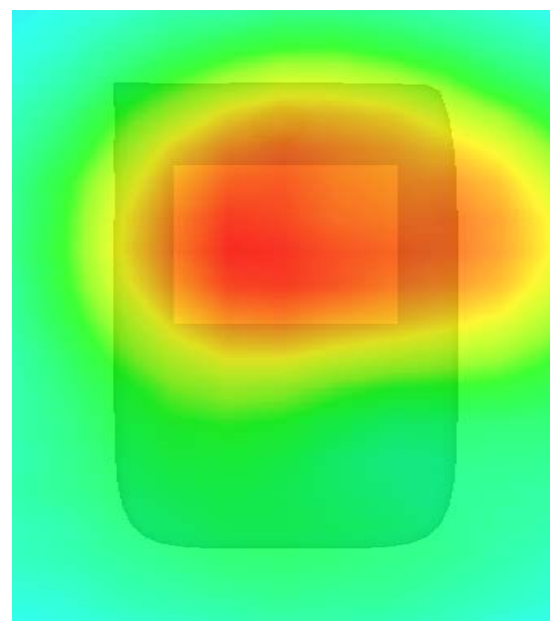
SAR, Z Axis Scan (X = -6, Y = 16)



3D scen shot



Hot spot position



MEASUREMENT 47

Type: Phone measurement (Complete)

Area scan resolution: dx=8mm,dy=8mm

Zoom scan resolution: dx=5mm, dy=5mm, dz=5mm

Date of measurement: 2013.1.6

Measurement duration: 8 minutes 17 seconds

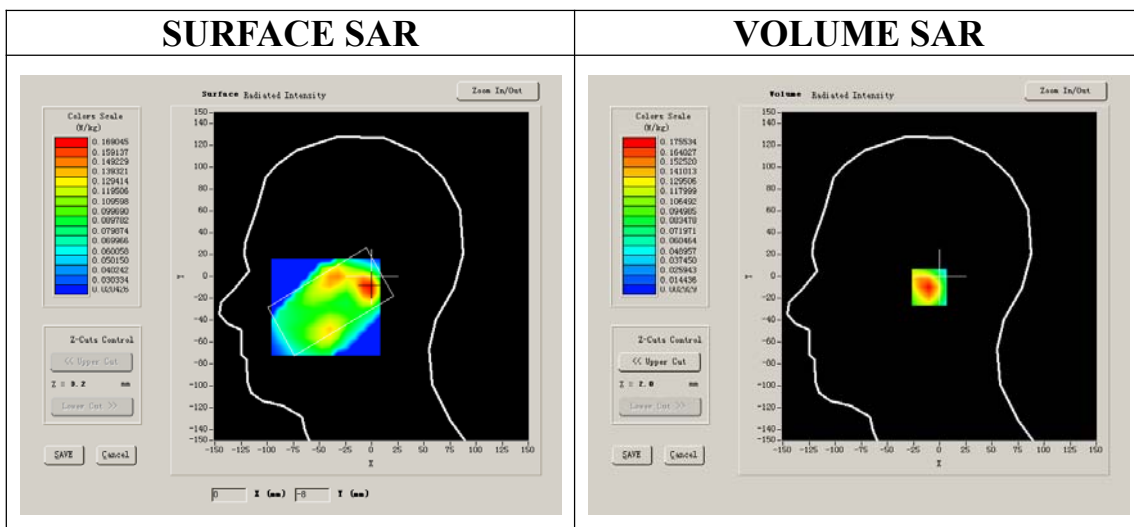
A. Experimental conditions.

Phantom File	surf_sam_plan.txt
Phantom	Right head
Device Position	Cheek
Band	802.11B
Channels	High
Signal	DSSS

B. SAR Measurement Results

Higher Band SAR (Channel 11)

Frequency (MHz)	2462.000000
Relative permittivity (real part)	39.723451
Conductivity (S/m)	1.794326
Power drift (%)	-0.430000
Ambient Temperature:	22.3°C
Liquid Temperature:	21.5°C
ConvF:	39.563,33.614,37.677
Crest factor:	1:1



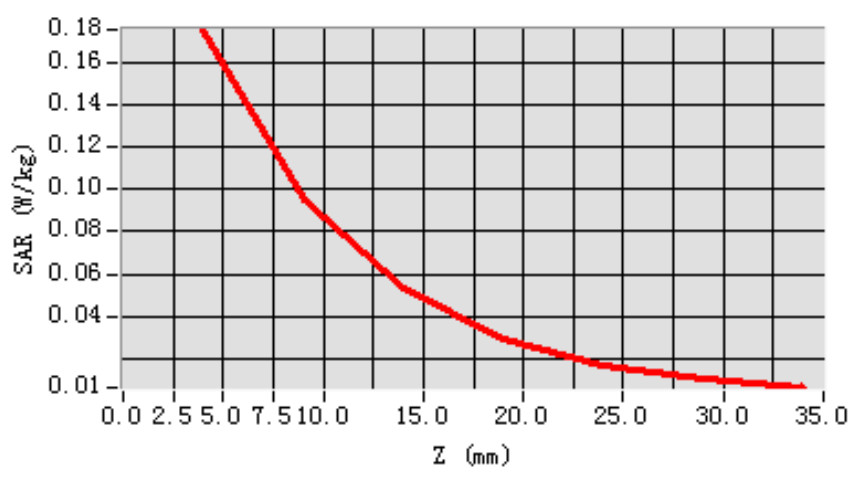
Maximum location: X=-2.00, Y=-10.00

SAR 10g (W/Kg)	0.089298
SAR 1g (W/Kg)	0.164271

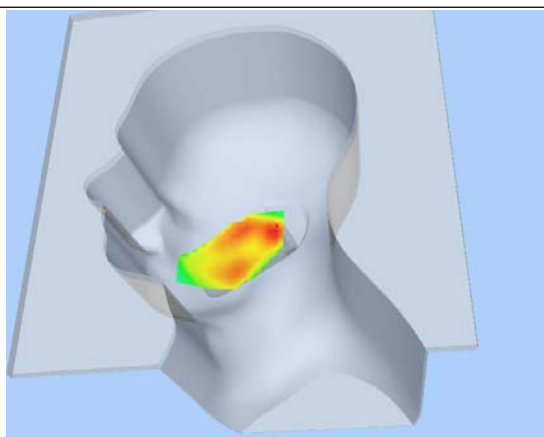
Z Axis Scan

Z (mm)	0.00	4.00	9.00	14.00	19.00	24.00	29.00
SAR (W/Kg)	0.0000	0.1755	0.0949	0.0534	0.0294	0.0167	0.0100

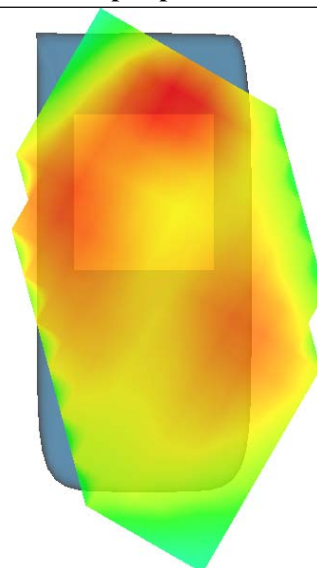
SAR, Z Axis Scan (X = -2, Y = -10)



3D scen shot



Hot spot position



MEASUREMENT 48

Type: Phone measurement (Complete)

Area scan resolution: dx=8mm,dy=8mm

Zoom scan resolution: dx=5mm, dy=5mm, dz=5mm

Date of measurement: 2013.1.6

Measurement duration: 8 minutes 15 seconds

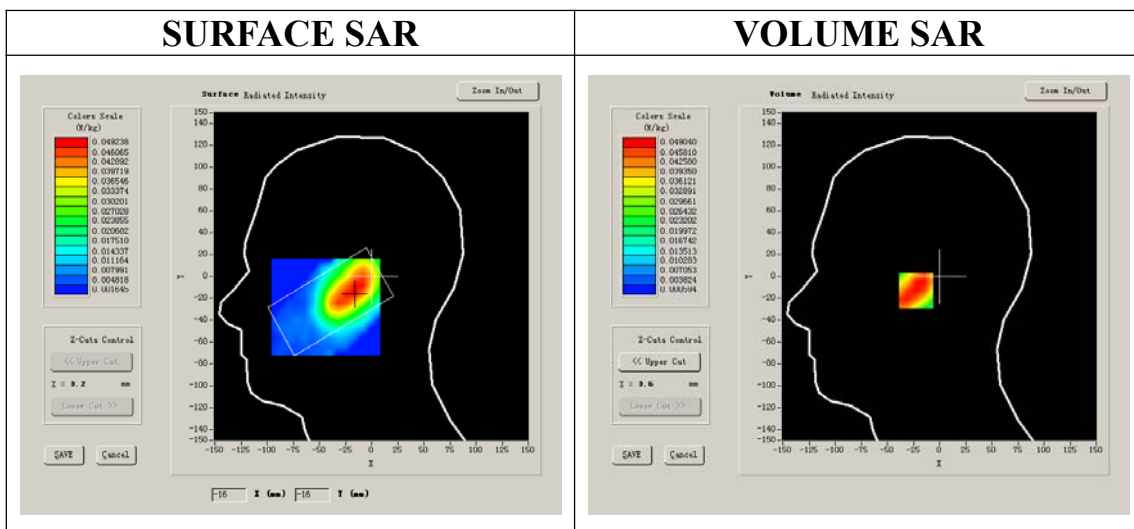
A. Experimental conditions.

Phantom File	surf_sam_plan.txt
Phantom	Right head
Device Position	Tilt
Band	802.11B
Channels	High
Signal	DSSS

B. SAR Measurement Results

Higher Band SAR (Channel 11)

Frequency (MHz)	2462.000000
Relative permittivity (real part)	39.723451
Conductivity (S/m)	1.794326
Power drift (%)	-0.630000
Ambient Temperature:	22.3°C
Liquid Temperature:	21.5°C
ConvF:	39.563,33.614,37.677
Crest factor:	1:1



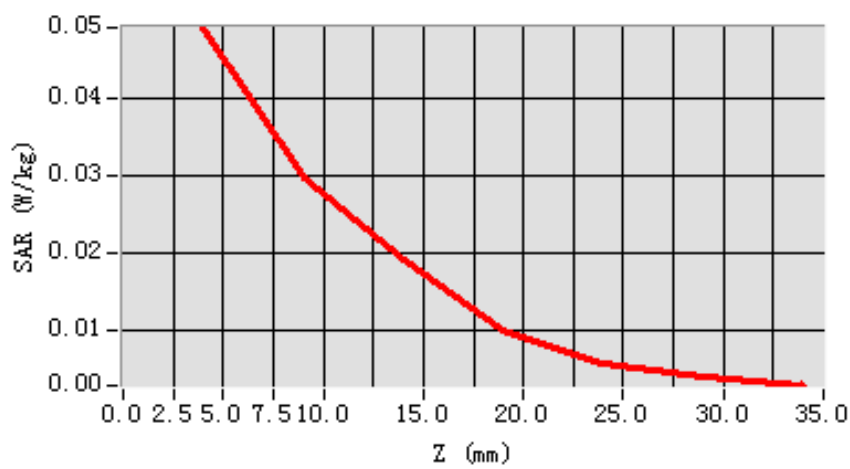
Maximum location: X=-16.00, Y=-13.00

SAR 10g (W/Kg)	0.028436
SAR 1g (W/Kg)	0.048173

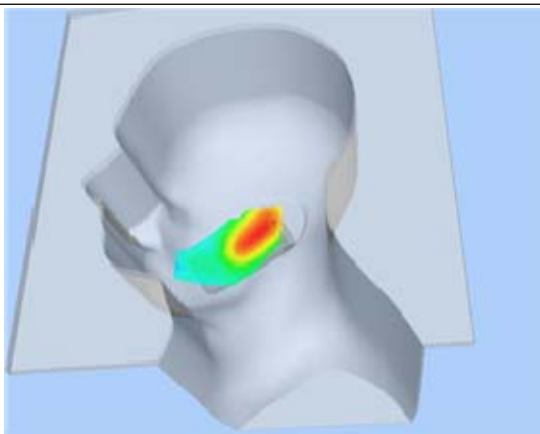
Z Axis Scan

Z (mm)	0.00	4.00	9.00	14.00	19.00	24.00	29.00
SAR (W/Kg)	0.0000	0.0490	0.0296	0.0192	0.0101	0.0057	0.0041

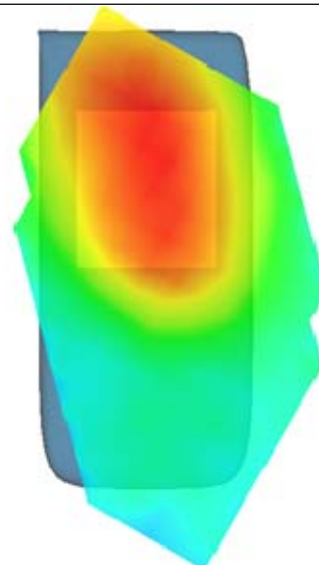
SAR, Z Axis Scan (X = -16, Y = -13)



3D scen shot



Hot spot position



MEASUREMENT 49

Type: Phone measurement (Complete)

Area scan resolution: dx=8mm,dy=8mm

Zoom scan resolution: dx=5mm, dy=5mm, dz=5mm

Date of measurement: 2013.1.6

Measurement duration: 8 minutes 17 seconds

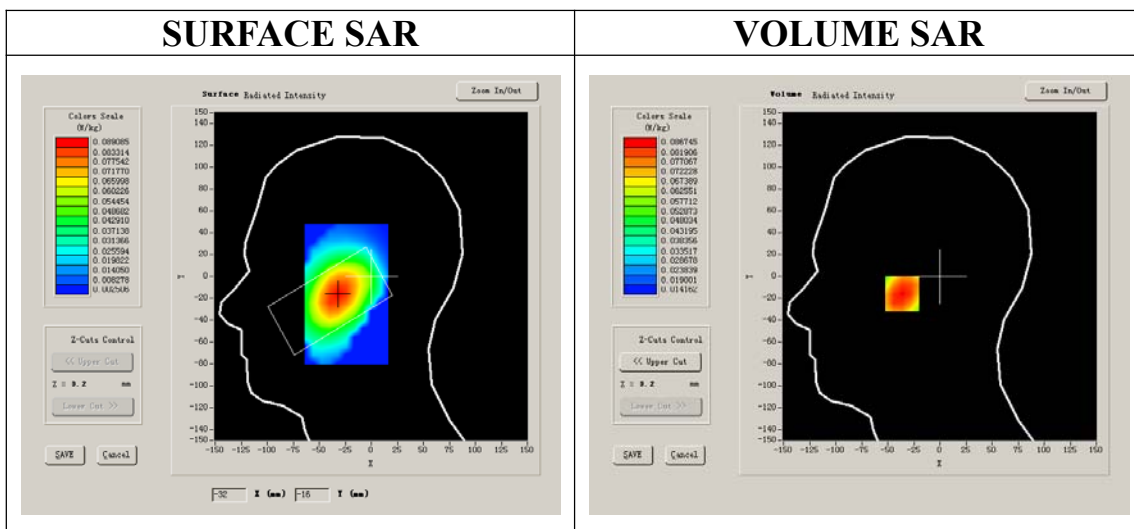
A. Experimental conditions.

Phantom File	surf_sam_plan.txt
Phantom	Left head
Device Position	Cheek
Band	802.11B
Channels	High
Signal	DSSS

B. SAR Measurement Results

High Band SAR (Channel 11)

Frequency (MHz)	2462.000000
Relative permittivity (real part)	39.723451
Conductivity (S/m)	1.794326
Power drift (%)	0.510000
Ambient Temperature:	22.3°C
Liquid Temperature:	21.5°C
ConvF:	39.563,33.614,37.677
Crest factor:	1:1



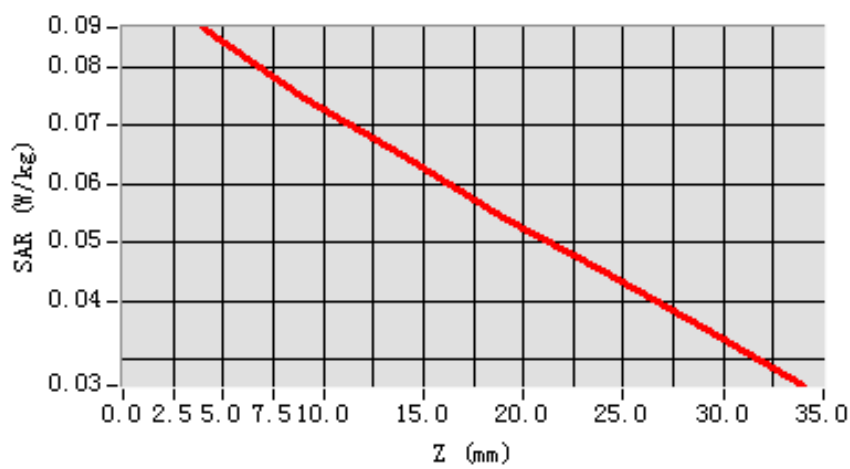
Maximum location: X=-32.00, Y=-16.00

SAR 10g (W/Kg)	0.068461
SAR 1g (W/Kg)	0.086236

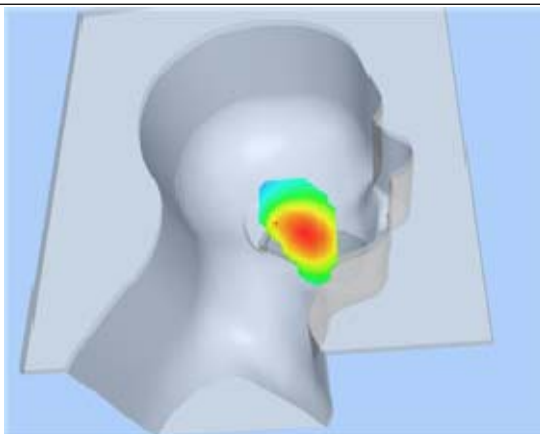
Z Axis Scan

Z (mm)	0.00	4.00	9.00	14.00	19.00	24.00	29.00
SAR (W/Kg)	0.0000	0.0887	0.0748	0.0649	0.0542	0.0451	0.0352

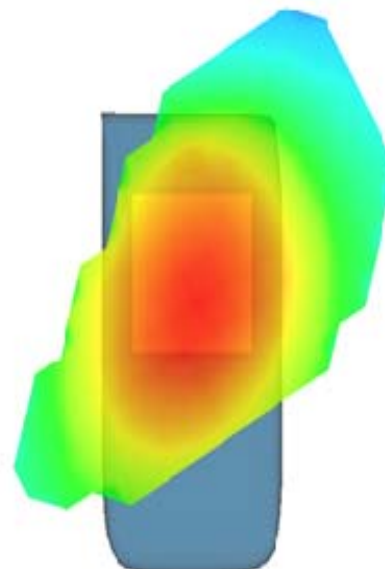
SAR, Z Axis Scan (X = -32, Y = -16)



3D scen shot



Hot spot position



MEASUREMENT 50

Type: Phone measurement (Complete)

Area scan resolution: dx=8mm,dy=8mm

Zoom scan resolution: dx=5mm, dy=5mm, dz=5mm

Date of measurement: 2013.1.6

Measurement duration: 8 minutes 17 seconds

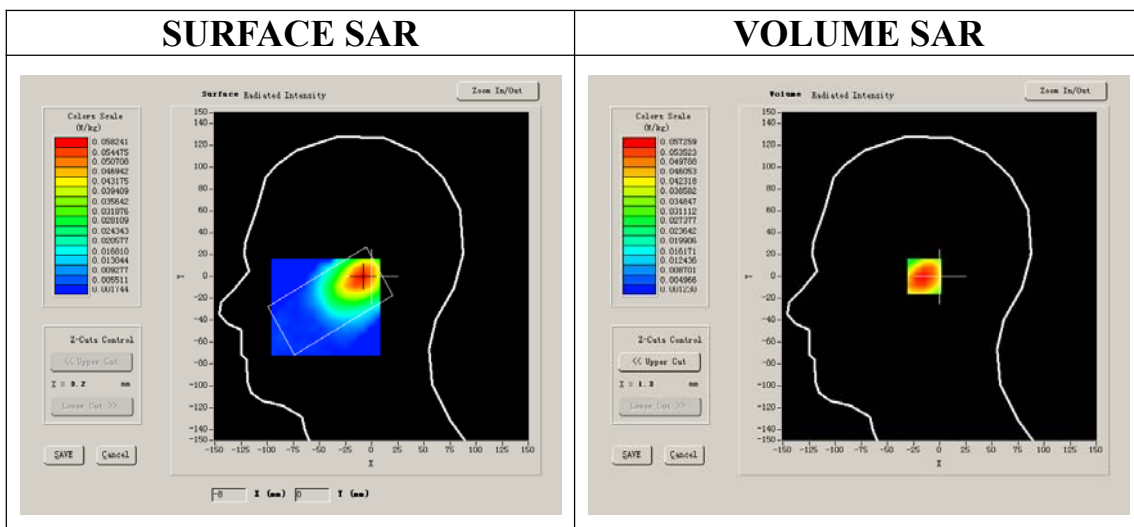
A. Experimental conditions.

Phantom File	surf_sam_plan.txt
Phantom	Left head
Device Position	Tilt
Band	802.11B
Channels	High
Signal	DSSS

B. SAR Measurement Results

High Band SAR (Channel 11)

Frequency (MHz)	2462.000000
Relative permittivity (real part)	39.723451
Conductivity (S/m)	1.794326
Power drift (%)	0.620000
Ambient Temperature:	22.3°C
Liquid Temperature:	21.5°C
ConvF:	39.563,33.614,37.677
Crest factor:	1:1



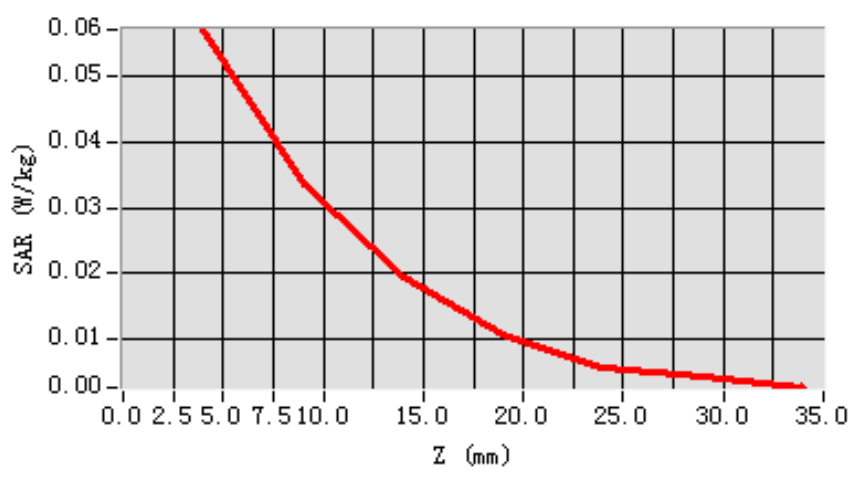
Maximum location: X=-9.00, Y=0.00

SAR 10g (W/Kg)	0.031807
SAR 1g (W/Kg)	0.054858

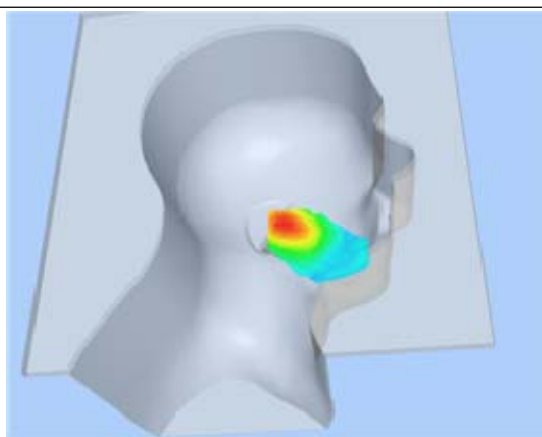
Z Axis Scan

Z (mm)	0.00	4.00	9.00	14.00	19.00	24.00	29.00
SAR (W/Kg)	0.0000	0.0573	0.0337	0.0194	0.0106	0.0055	0.0042

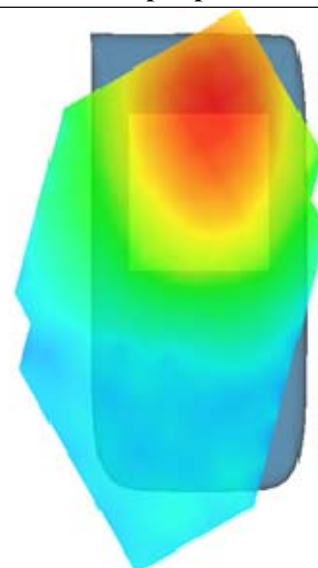
SAR, Z Axis Scan (X = -9, Y = 0)



3D scen shot



Hot spot position



MEASUREMENT 51

Type: Phone measurement (Complete)

Area scan resolution: dx=8mm,dy=8mm

Zoom scan resolution: dx=5mm, dy=5mm, dz=5mm

Date of measurement: 2013.1.6

Measurement duration: 9 minutes 10 seconds

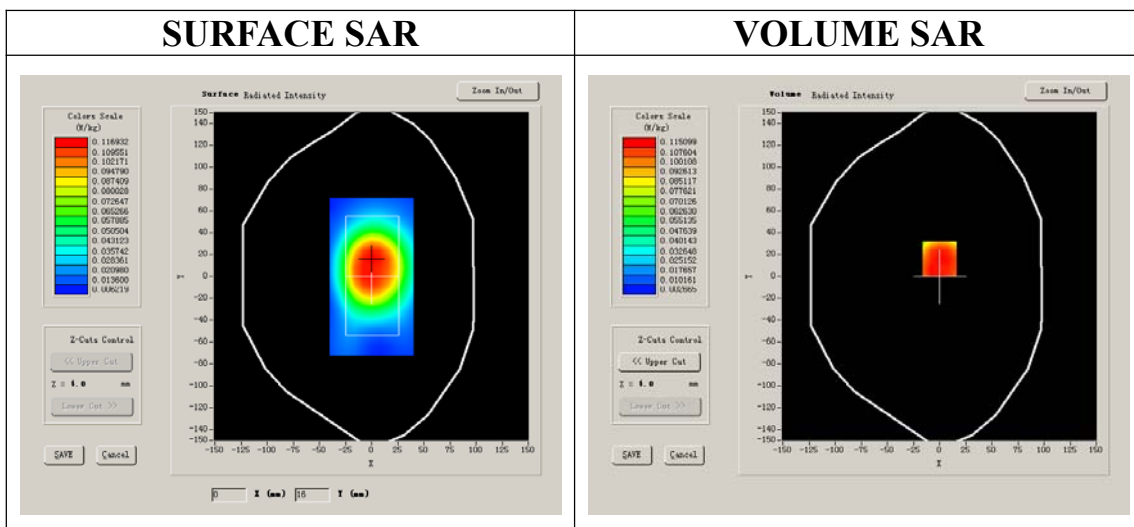
A. Experimental conditions.

Phantom File	surf_sam_plan.txt
Phantom	Validation plane
Device Position	Body
Band	802.11B
Channels	High
Signal	DSSS

B. SAR Measurement Results

High Band SAR (Channel 11)

Frequency (MHz)	2462.000000
Relative permittivity (real part)	53.461064
Conductivity (S/m)	1.853317
Power drift (%)	-1.710000
Ambient Temperature:	22.0°C
Liquid Temperature:	21.8°C
ConvF:	39.772,33.946,37.835
Crest factor:	1:1



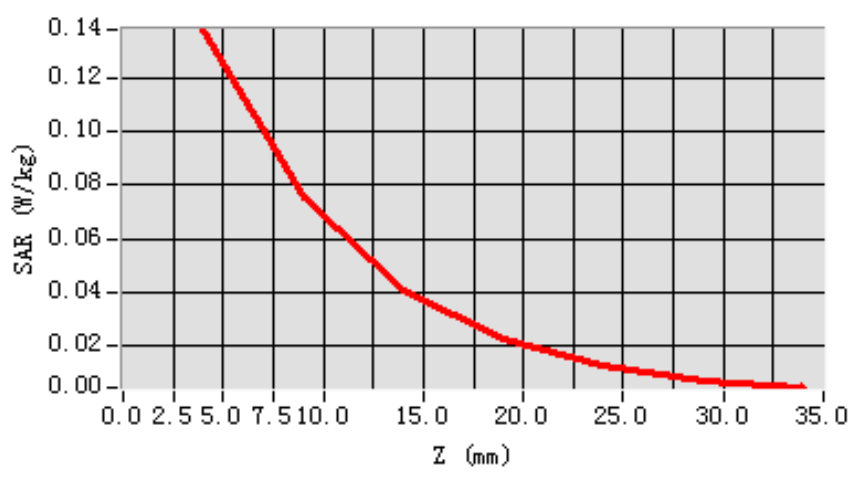
Maximum location: X=0.00, Y=16.00

SAR 10g (W/Kg)	0.078402
SAR 1g (W/Kg)	0.132832

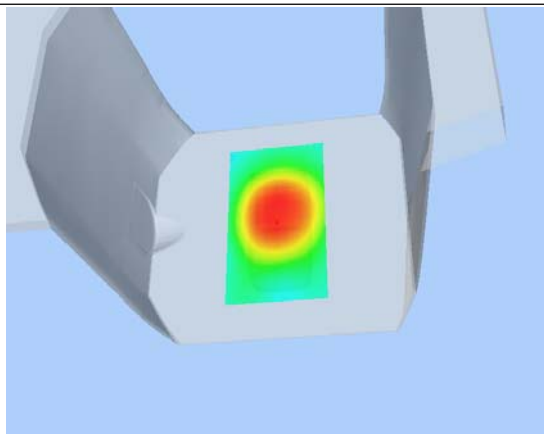
Z Axis Scan

Z (mm)	0.00	4.00	9.00	14.00	19.00	24.00	29.00
SAR (W/Kg)	0.0000	0.1381	0.0755	0.0409	0.0227	0.0124	0.0069

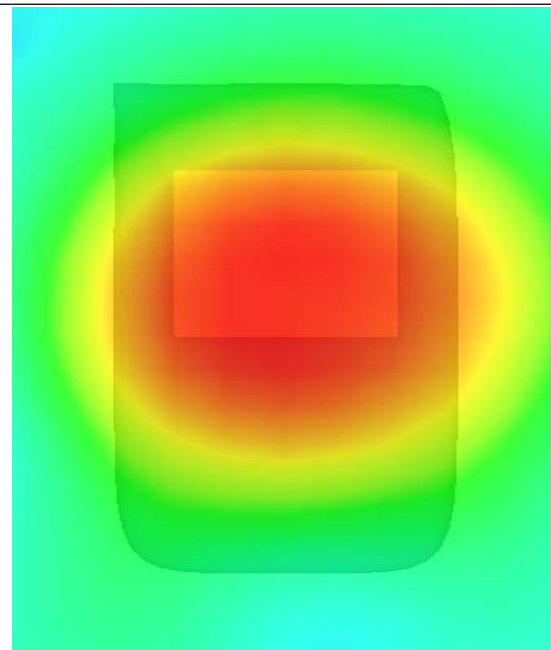
SAR, Z Axis Scan (X = 0, Y = 16)



3D scen shot



Hot spot position



MEASUREMENT 52

Type: Phone measurement (Complete)

Area scan resolution: dx=8mm,dy=8mm

Zoom scan resolution: dx=5mm, dy=5mm, dz=5mm

Date of measurement: 2013.1.6

Measurement duration: 9 minutes 10 seconds

A. Experimental conditions.

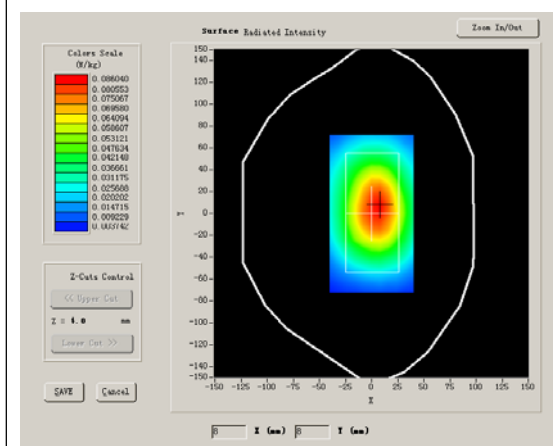
Phantom File	surf_sam_plan.txt
Phantom	Validation plane
Device Position	Body
Band	802.11B
Channels	High
Signal	DSSS

B. SAR Measurement Results

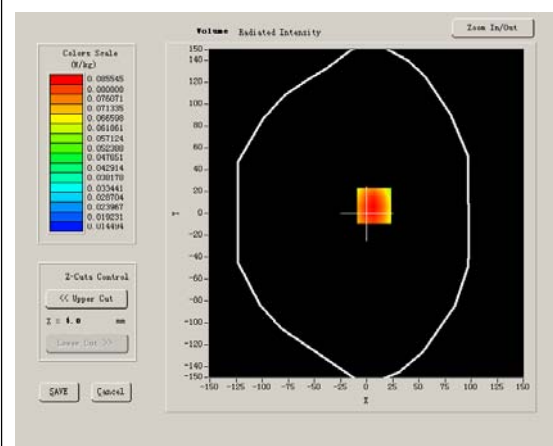
Higher Band SAR (Channel 11)

Frequency (MHz)	2462.000000
Relative permittivity (real part)	53.461064
Conductivity (S/m)	1.853317
Power drift (%)	-2.160000
Ambient Temperature:	22.0°C
Liquid Temperature:	21.8°C
ConvF:	39.772,33.946,37.835
Crest factor:	1:1

SURFACE SAR



VOLUME SAR



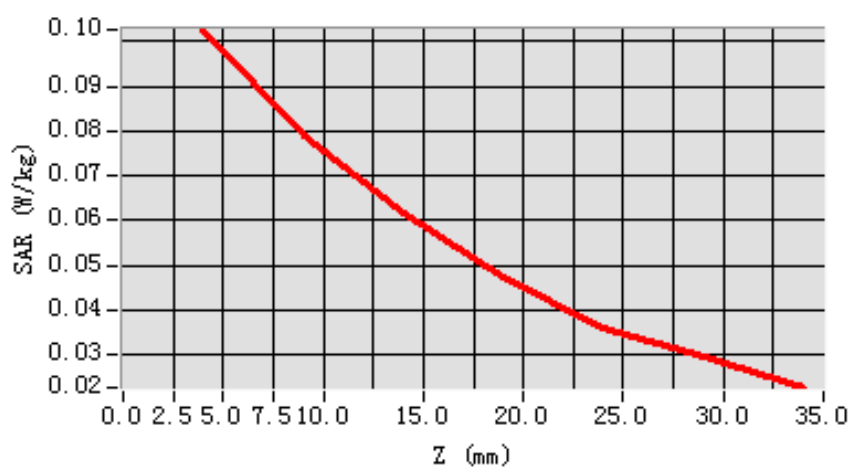
Maximum location: X=7.00, Y=7.00

SAR 10g (W/Kg)	0.073457
SAR 1g (W/Kg)	0.098751

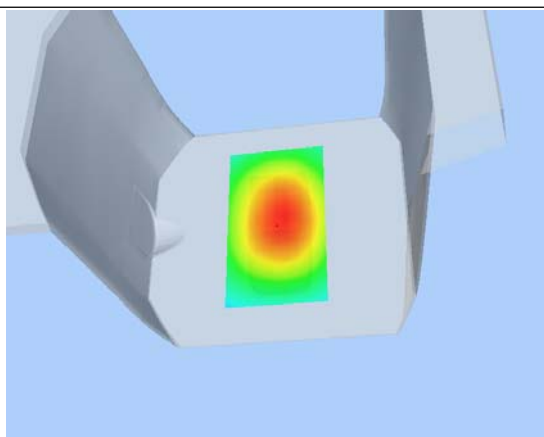
Z Axis Scan

Z (mm)	0.00	4.00	9.00	14.00	19.00	24.00	29.00
SAR (W/Kg)	0.0000	0.1027	0.0789	0.0618	0.0470	0.0361	0.0297

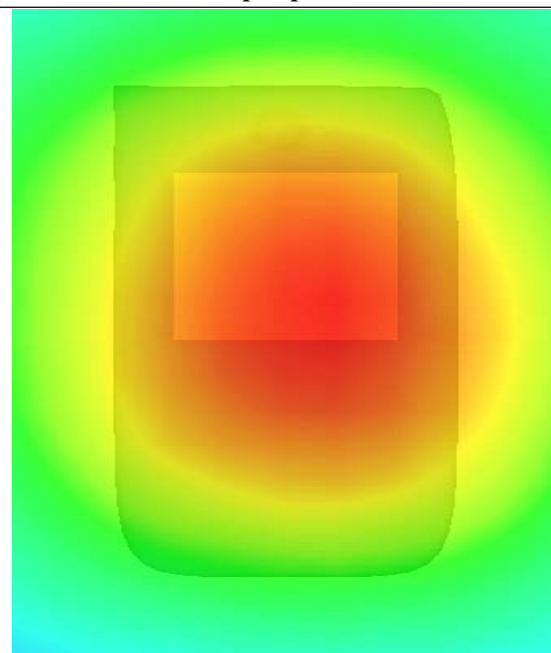
SAR, Z Axis Scan (X = 7, Y = 7)



3D scen shot



Hot spot position



MEASUREMENT 53

Type: Phone measurement (Complete)

Area scan resolution: dx=8mm,dy=8mm

Zoom scan resolution: dx=5mm, dy=5mm, dz=5mm

Date of measurement: 2013.1.6

Measurement duration: 9 minutes 10 seconds

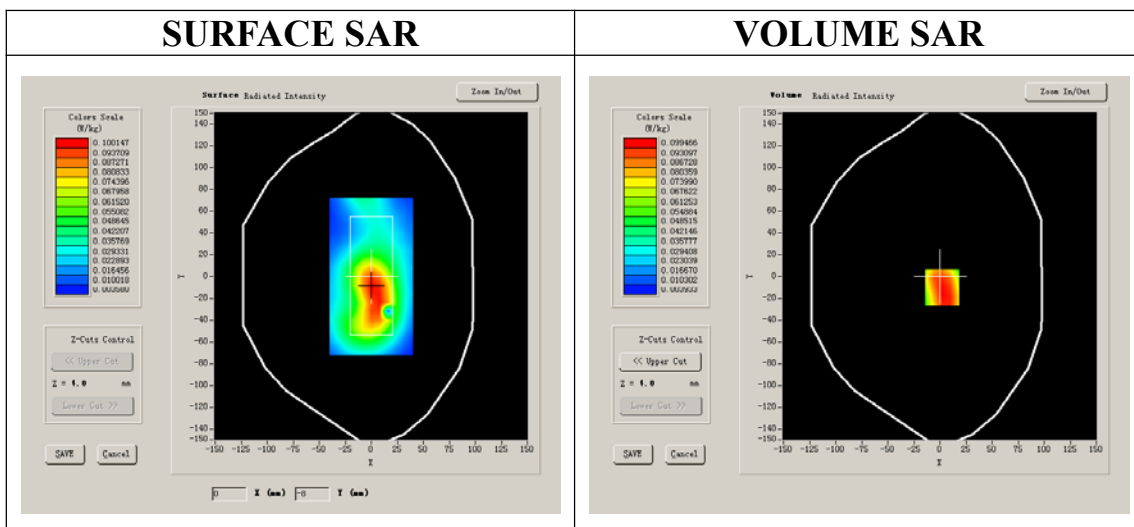
A. Experimental conditions.

Phantom File	surf_sam_plan.txt
Phantom	Validation plane
Device Position	Body
Band	802.11B
Channels	High
Signal	DSSS

B. SAR Measurement Results

Higher Band SAR (Channel 11)

Frequency (MHz)	2462.000000
Relative permittivity (real part)	53.461064
Conductivity (S/m)	1.853317
Power drift (%)	-1.910000
Ambient Temperature:	22.0°C
Liquid Temperature:	21.8°C
ConvF:	39.772,33.946,37.835
Crest factor:	1:1



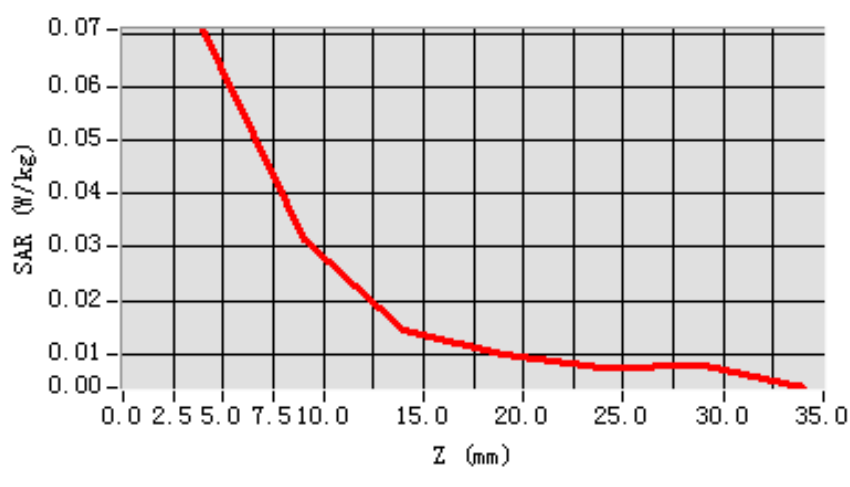
Maximum location: X=-8.00, Y=-1.00

SAR 10g (W/Kg)	0.039495
SAR 1g (W/Kg)	0.074147

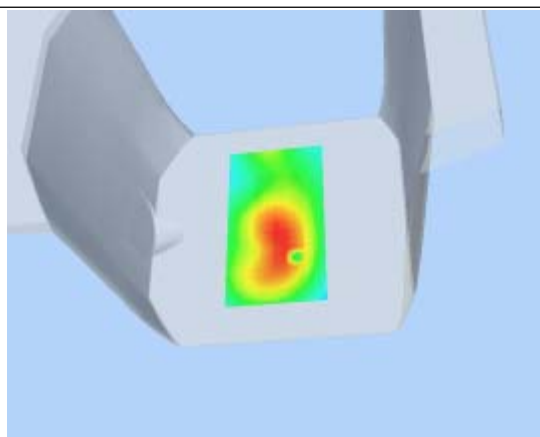
Z Axis Scan

Z (mm)	0.00	4.00	9.00	14.00	19.00	24.00	29.00
SAR (W/Kg)	0.0000	0.0706	0.0314	0.0146	0.0099	0.0073	0.0078

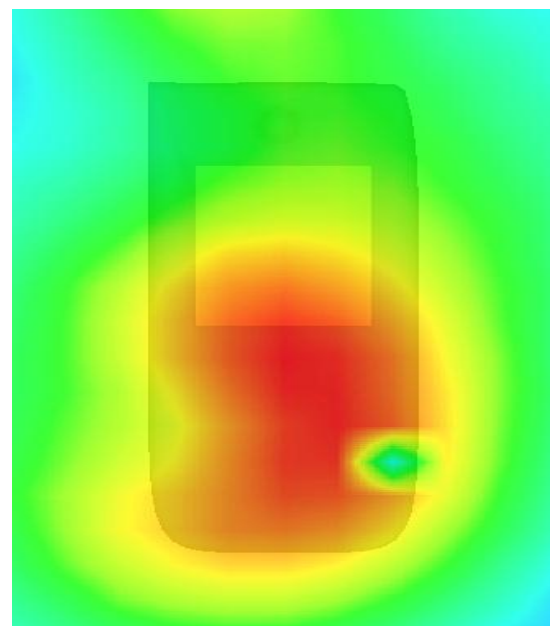
SAR, Z Axis Scan (X = -8, Y = -1)



3D scen shot



Hot spot position



MEASUREMENT 54

Type: Phone measurement (Complete)

Area scan resolution: dx=8mm,dy=8mm

Zoom scan resolution: dx=5mm, dy=5mm, dz=5mm

Date of measurement: 2013.1.6

Measurement duration: 9 minutes 10 seconds

A. Experimental conditions.

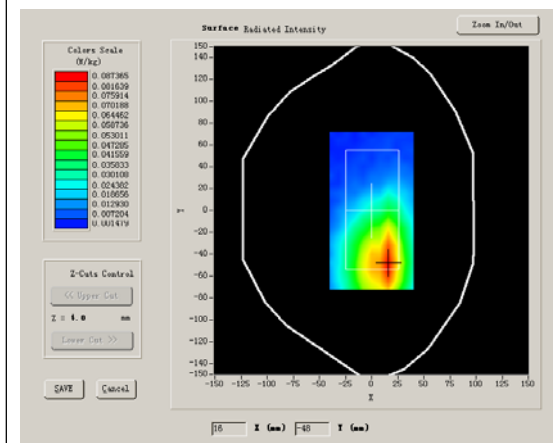
Phantom File	surf_sam_plan.txt
Phantom	Validation plane
Device Position	Body
Band	802.11B
Channels	High
Signal	DSSS

B. SAR Measurement Results

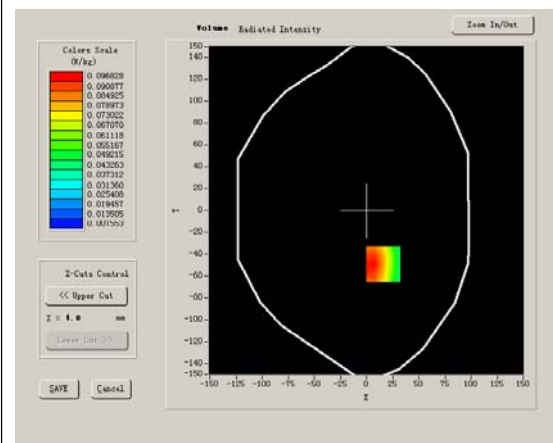
Higher Band SAR (Channel 11)

Frequency (MHz)	2462.000000
Relative permittivity (real part)	53.461064
Conductivity (S/m)	1.853317
Power drift (%)	-1.810000
Ambient Temperature:	22.0°C
Liquid Temperature:	21.8°C
ConvF:	39.772,33.946,37.835
Crest factor:	1:1

SURFACE SAR



VOLUME SAR



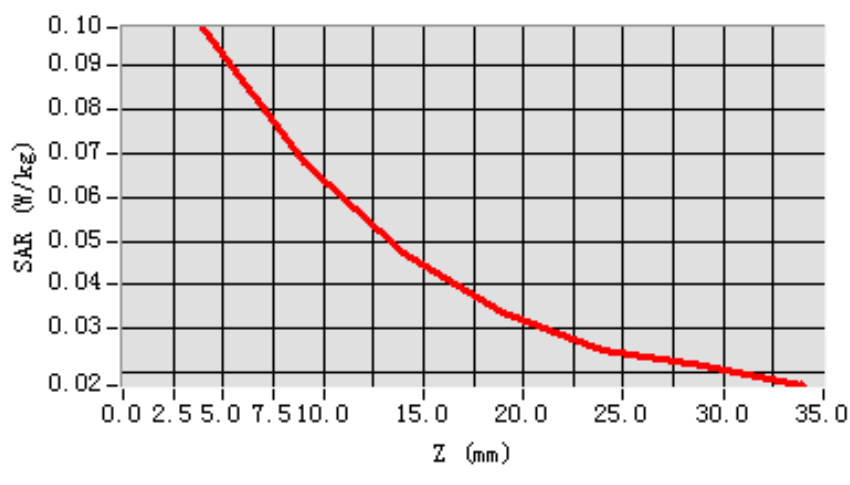
Maximum location: X=16.00, Y=-49.00

SAR 10g (W/Kg)	0.074194
SAR 1g (W/Kg)	0.110467

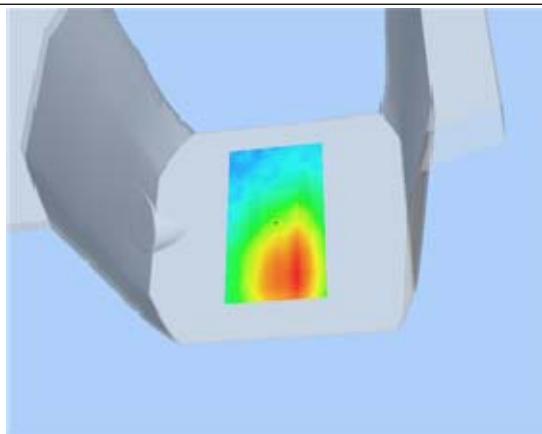
Z Axis Scan

Z (mm)	0.00	4.00	9.00	14.00	19.00	24.00	29.00
SAR (W/Kg)	0.0000	0.0988	0.0678	0.0473	0.0335	0.0249	0.0213

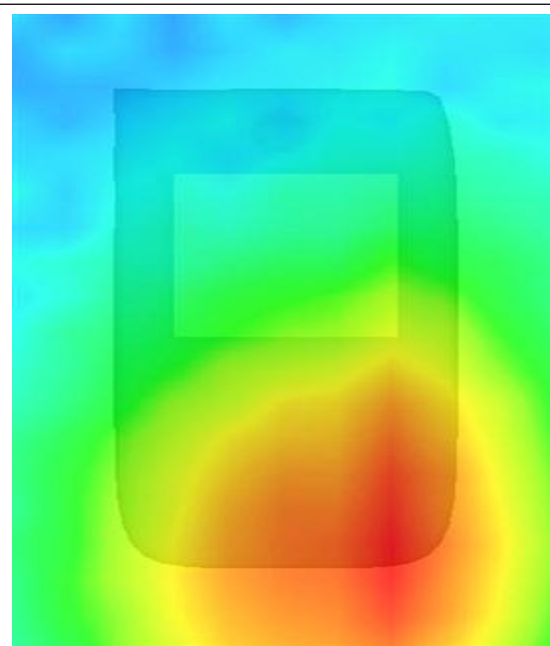
SAR, Z Axis Scan (X = 16, Y = -49)



3D scen shot



Hot spot position



MEASUREMENT 55

Type: Phone measurement (Complete)

Area scan resolution: dx=8mm,dy=8mm

Zoom scan resolution: dx=4mm, dy=4mm, dz=2mm

Date of measurement: 2013.1.6

Measurement duration: 8 minutes 17 seconds

A. Experimental conditions.

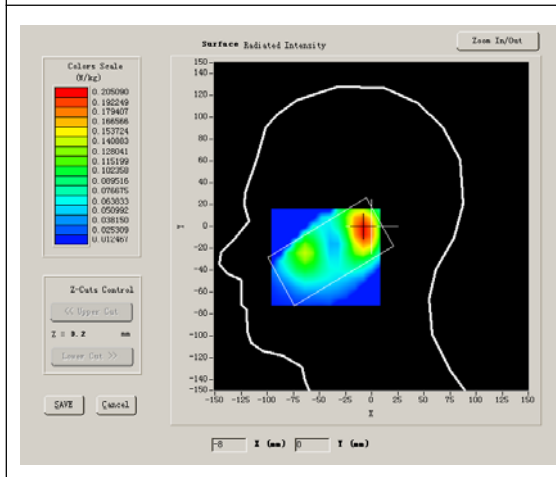
Phantom File	surf_sam_plan.txt
Phantom	Right head
Device Position	Cheek
Band	802.11A
Channels	High
Signal	OFDM

B. SAR Measurement Results

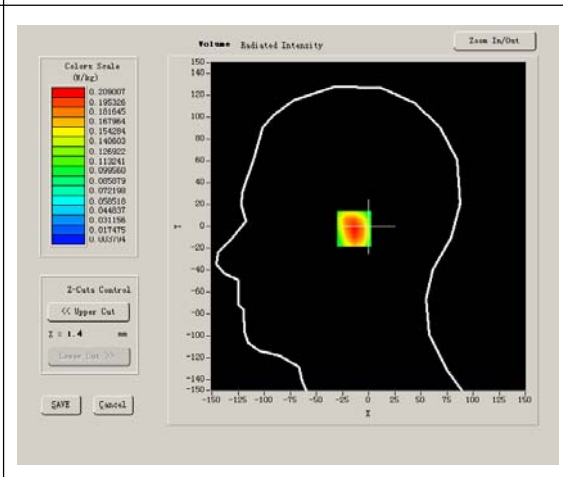
Higher Band SAR (Channel 165)

Frequency (MHz)	5825.000000
Relative permittivity (real part)	34.018247
Conductivity (S/m)	5.351094
Power drift (%)	-1.430000
Ambient Temperature:	22.3°C
Liquid Temperature:	21.5°C
ConvF:	36.142,34.568,35.420
Crest factor:	1:1

SURFACE SAR



VOLUME SAR



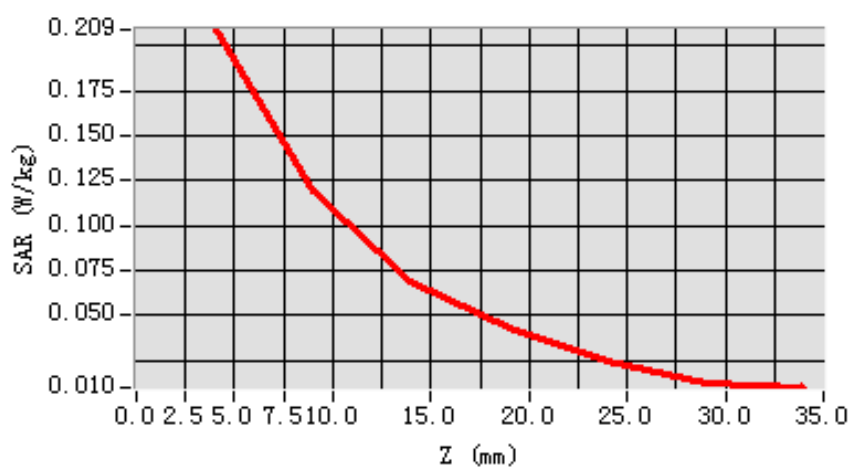
Maximum location: X=-8.00, Y=-2.00

SAR 10g (W/Kg)	0.113455
SAR 1g (W/Kg)	0.199936

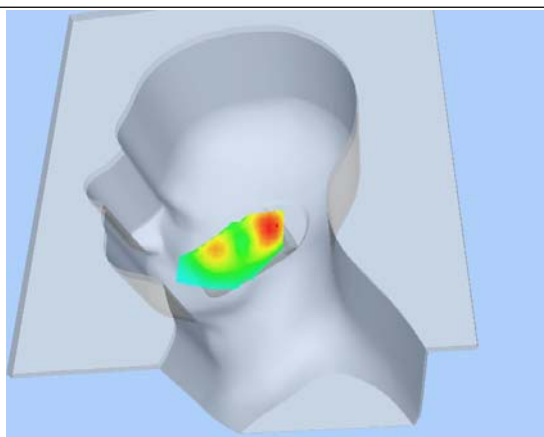
Z Axis Scan

Z (mm)	0.00	4.00	9.00	14.00	19.00	24.00	29.00
SAR (W/Kg)	0.0000	0.2090	0.1197	0.0691	0.0423	0.0239	0.0124

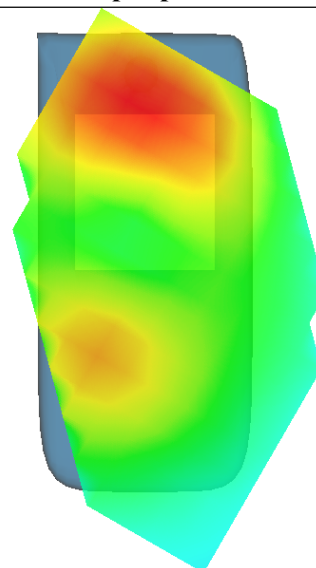
SAR, Z Axis Scan (X = -8, Y = -2)



3D scen shot



Hot spot position



MEASUREMENT 56

Type: Phone measurement (Complete)

Area scan resolution: dx=8mm,dy=8mm

Zoom scan resolution: dx=4mm, dy=4mm, dz=2mm

Date of measurement: 2013.1.6

Measurement duration: 8 minutes 15 seconds

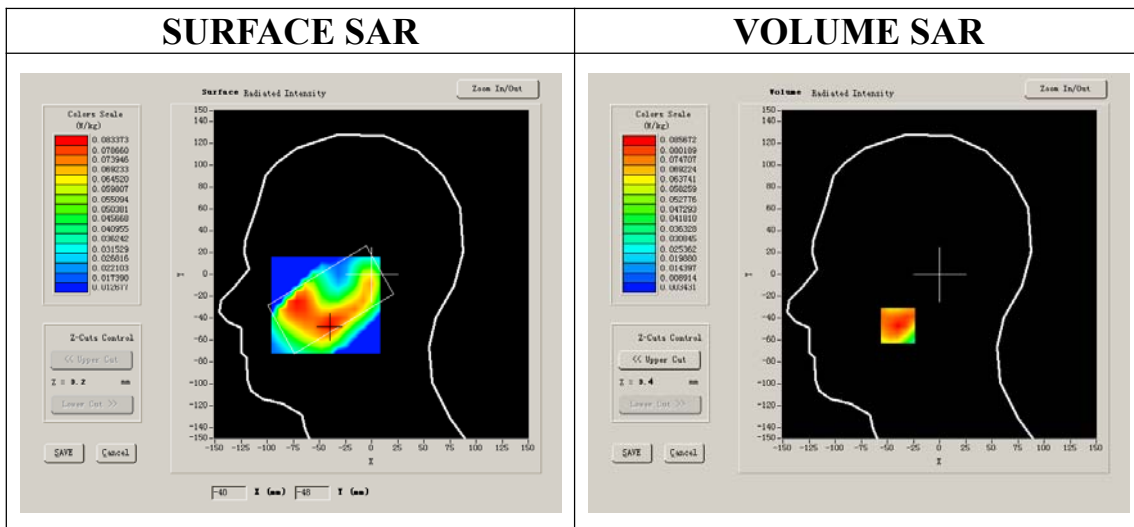
A. Experimental conditions.

Phantom File	surf_sam_plan.txt
Phantom	Right head
Device Position	Tilt
Band	802.11A
Channels	High
Signal	OFDM

B. SAR Measurement Results

Higher Band SAR (Channel 165)

Frequency (MHz)	5825.000000
Relative permittivity (real part)	34.018247
Conductivity (S/m)	5.351094
Power drift (%)	-0.630000
Ambient Temperature:	22.3°C
Liquid Temperature:	21.5°C
ConvF:	36.142,34.568,35.420
Crest factor:	1:1



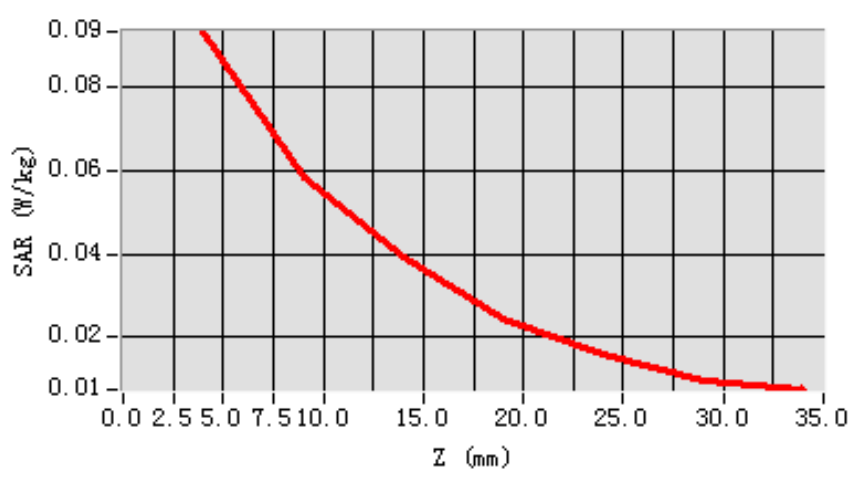
Maximum location: X=-40.00, Y=-47.00

SAR 10g (W/Kg)	0.054746
SAR 1g (W/Kg)	0.088858

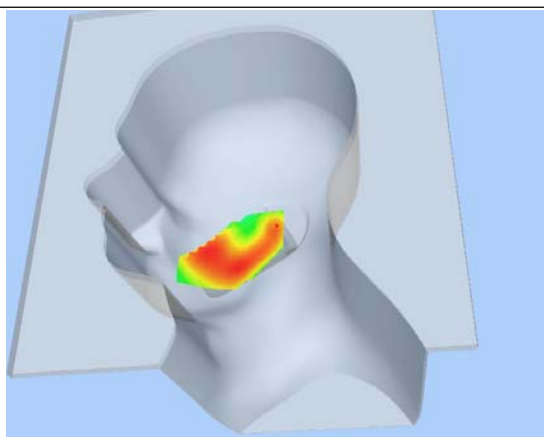
Z Axis Scan

Z (mm)	0.00	4.00	9.00	14.00	19.00	24.00	29.00
SAR (W/Kg)	0.0000	0.0933	0.0582	0.0393	0.0244	0.0161	0.0095

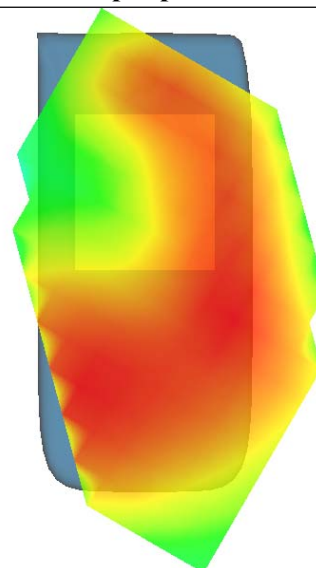
SAR, Z Axis Scan (X = -40, Y = -47)



3D scen shot



Hot spot position



MEASUREMENT 57

Type: Phone measurement (Complete)

Area scan resolution: dx=8mm,dy=8mm

Zoom scan resolution: dx=4mm, dy=4mm, dz=2mm

Date of measurement: 2013.1.6

Measurement duration: 8 minutes 17 seconds

A. Experimental conditions.

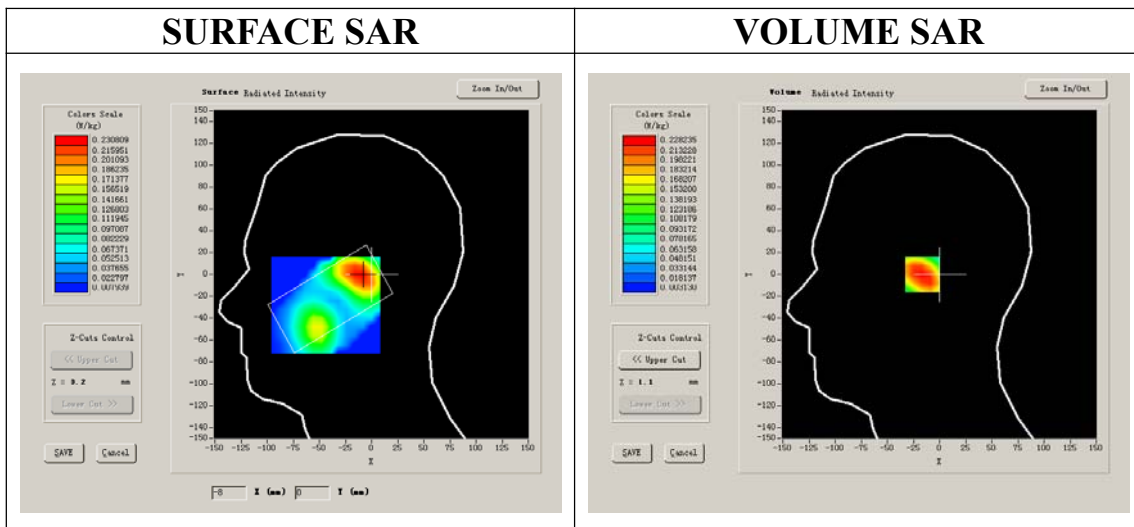
Phantom File	surf_sam_plan.txt
Phantom	Left head
Device Position	Cheek
Band	802.11A
Channels	High
Signal	OFDM

B. SAR Measurement Results

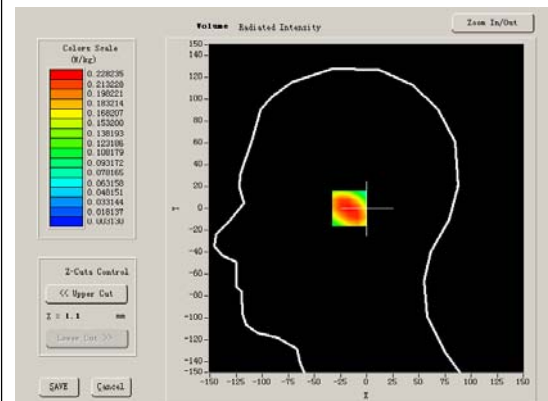
Higher Band SAR (Channel 165)

Frequency (MHz)	5825.000000
Relative permittivity (real part)	34.018247
Conductivity (S/m)	5.351094
Power drift (%)	0.510000
Ambient Temperature:	22.3°C
Liquid Temperature:	21.5°C
ConvF:	36.142,34.568,35.420
Crest factor:	1:1

SURFACE SAR



VOLUME SAR



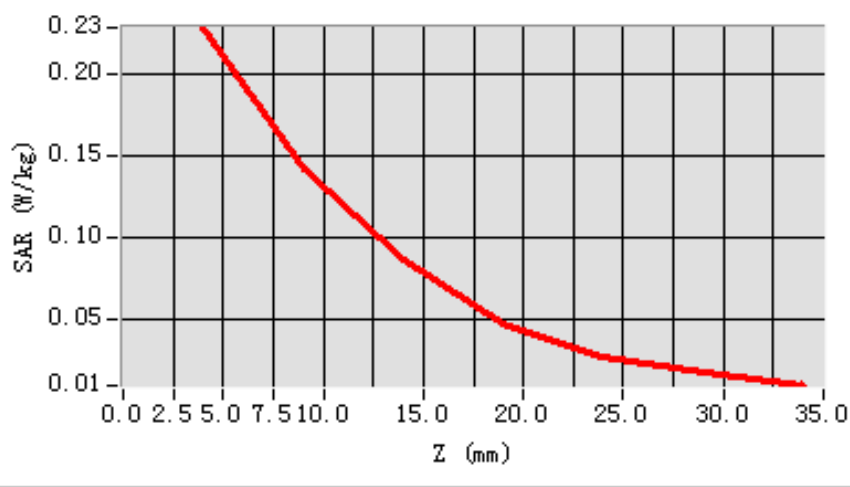
Maximum location: X=-11.00, Y=0.00

SAR 10g (W/Kg)	0.127970
SAR 1g (W/Kg)	0.217543

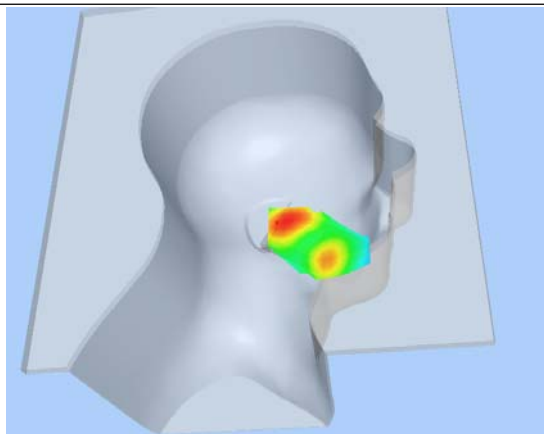
Z Axis Scan

Z (mm)	0.00	4.00	9.00	14.00	19.00	24.00	29.00
SAR (W/Kg)	0.0000	0.2282	0.1412	0.0862	0.0474	0.0276	0.0171

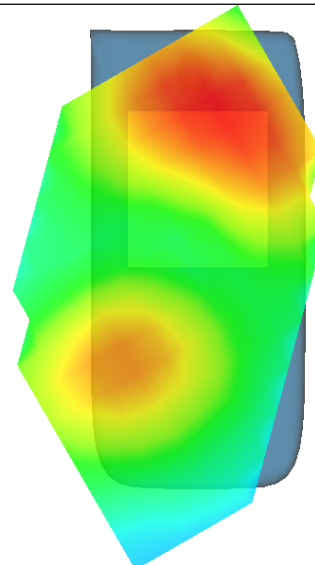
SAR, Z Axis Scan (X = -11, Y = 0)



3D scen shot



Hot spot position



MEASUREMENT 58

Type: Phone measurement (Complete)

Area scan resolution: dx=8mm,dy=8mm

Zoom scan resolution: dx=4mm, dy=4mm, dz=2mm

Date of measurement: 2013.1.6

Measurement duration: 8 minutes 17 seconds

A. Experimental conditions.

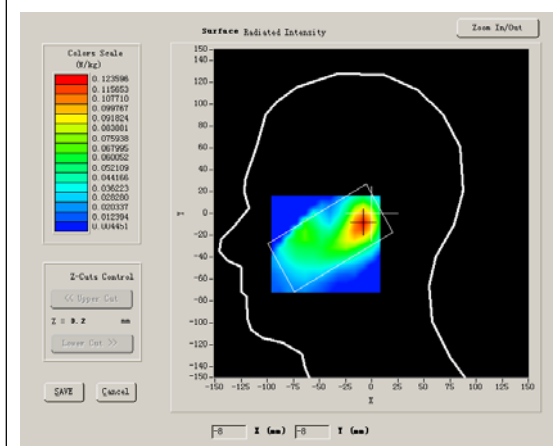
Phantom File	surf_sam_plan.txt
Phantom	Left head
Device Position	Tilt
Band	802.11B
Channels	High
Signal	OFDM

B. SAR Measurement Results

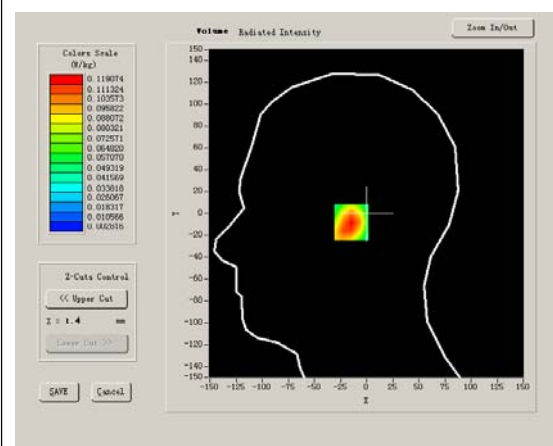
Higher Band SAR (Channel 165)

Frequency (MHz)	5825.000000
Relative permittivity (real part)	34.018247
Conductivity (S/m)	5.351094
Power drift (%)	0.620000
Ambient Temperature:	22.3°C
Liquid Temperature:	21.5°C
ConvF:	36.142,34.568,35.420
Crest factor:	1:1

SURFACE SAR



VOLUME SAR



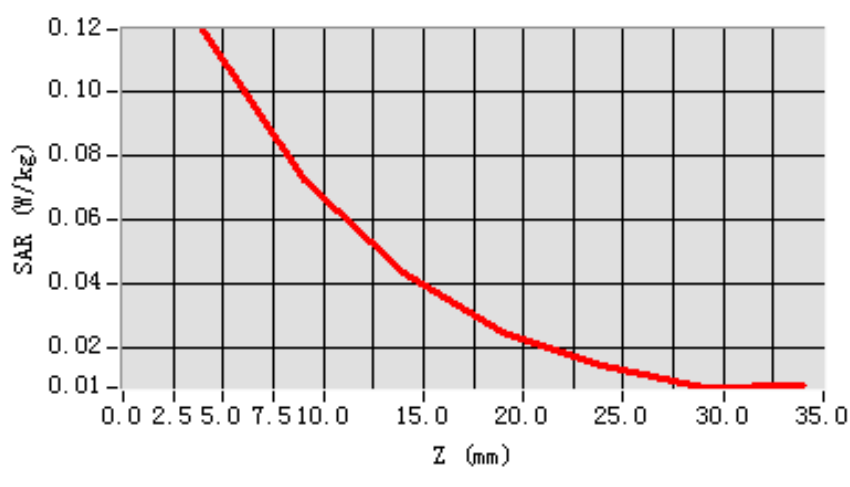
Maximum location: X=-8.00, Y=-8.00

SAR 10g (W/Kg)	0.065185
SAR 1g (W/Kg)	0.113662

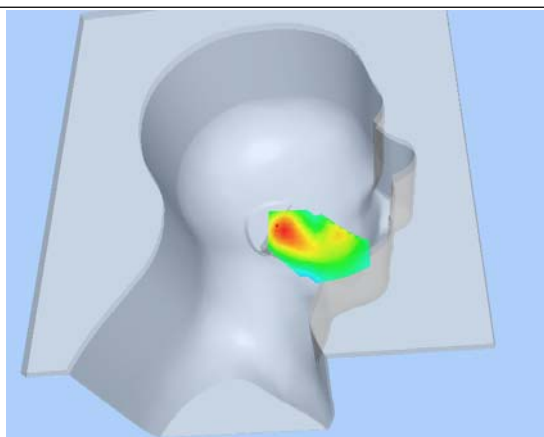
Z Axis Scan

Z (mm)	0.00	4.00	9.00	14.00	19.00	24.00	29.00
SAR (W/Kg)	0.0000	0.1191	0.0721	0.0433	0.0249	0.0143	0.0075

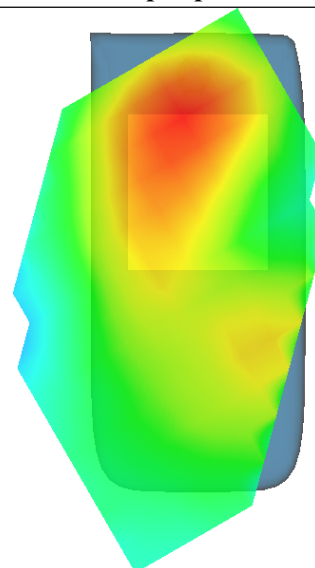
SAR, Z Axis Scan (X = -8, Y = -8)



3D scen shot



Hot spot position



MEASUREMENT 59

Type: Phone measurement (Complete)

Area scan resolution: dx=8mm,dy=8mm

Zoom scan resolution: dx=4mm, dy=4mm, dz=2mm

Date of measurement: 2013.1.6

Measurement duration: 9 minutes 10 seconds

A. Experimental conditions.

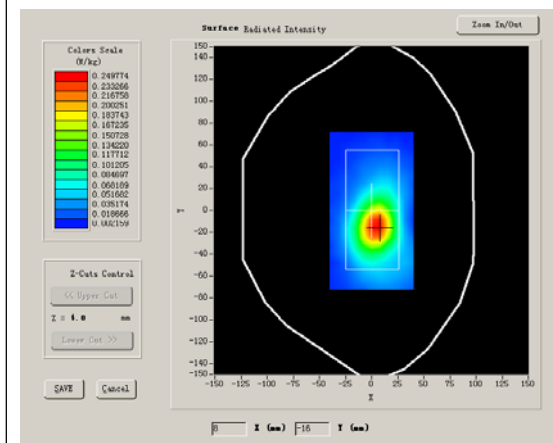
Phantom File	surf_sam_plan.txt
Phantom	Validation plane
Device Position	Body
Band	802.11A
Channels	High
Signal	OFDM

B. SAR Measurement Results

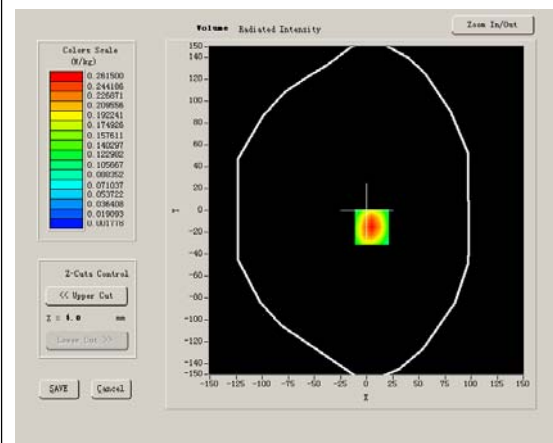
Higher Band SAR (Channel 165)

Frequency (MHz)	5825.000000
Relative permittivity (real part)	48.538752
Conductivity (S/m)	6.147318
Power drift (%)	-1.710000
Ambient Temperature:	22.0°C
Liquid Temperature:	21.8°C
ConvF:	36.745,34.115,36.174
Crest factor:	1:1

SURFACE SAR



VOLUME SAR



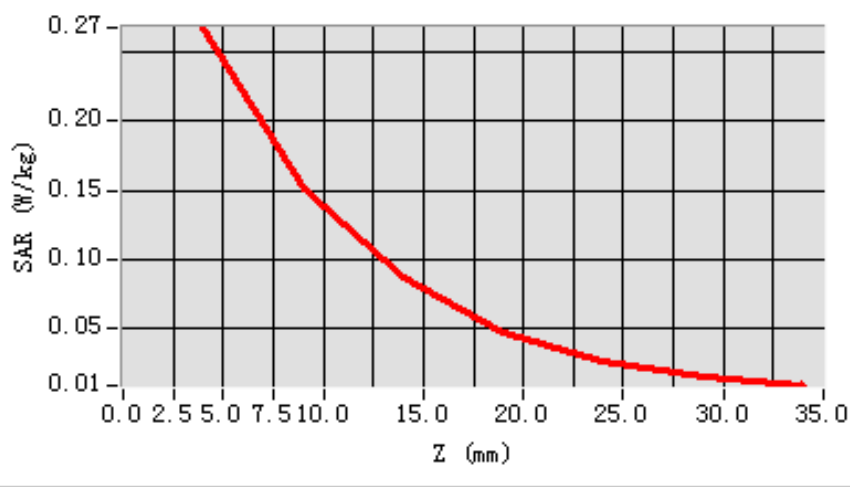
Maximum location: X=5.00, Y=-15.00

SAR 10g (W/Kg)	0.137988
SAR 1g (W/Kg)	0.250621

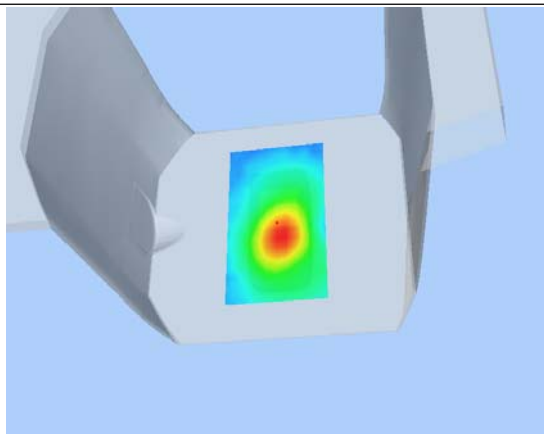
Z Axis Scan

Z (mm)	0.00	4.00	9.00	14.00	19.00	24.00	29.00
SAR (W/Kg)	0.0000	0.2676	0.1516	0.0878	0.0478	0.0273	0.0148

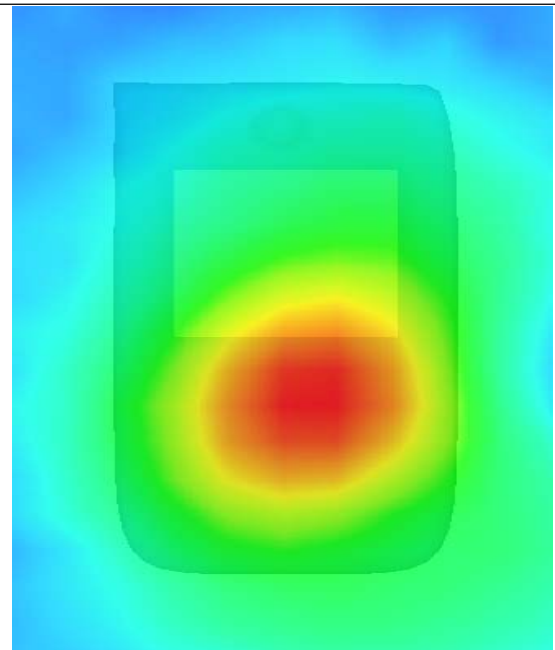
SAR, Z Axis Scan (X = 5, Y = -15)



3D scen shot



Hot spot position



MEASUREMENT 60

Type: Phone measurement (Complete)

Area scan resolution: dx=8mm,dy=8mm

Zoom scan resolution: dx=4mm, dy=4mm, dz=2mm

Date of measurement: 2013.1.6

Measurement duration: 9 minutes 10 seconds

A. Experimental conditions.

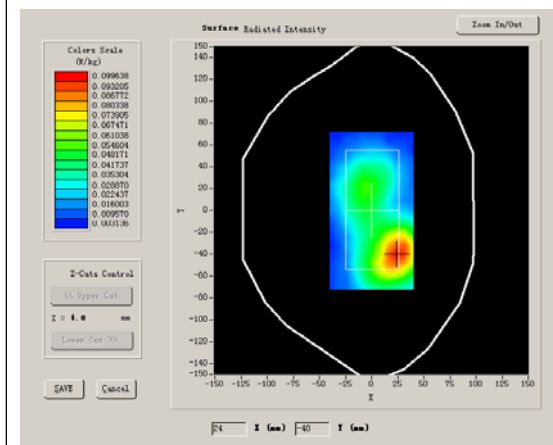
Phantom File	surf_sam_plan.txt
Phantom	Validation plane
Device Position	Body
Band	802.11A
Channels	High
Signal	OFDM

B. SAR Measurement Results

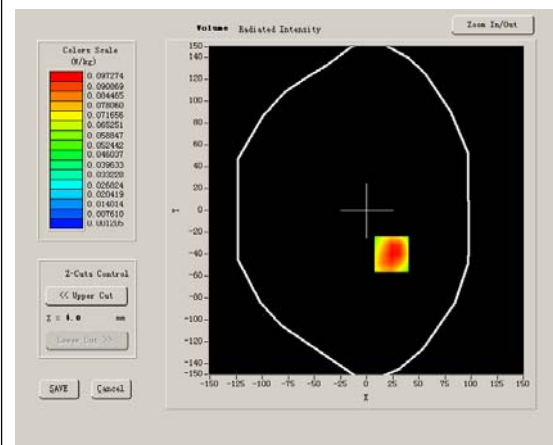
Higher Band SAR (Channel 165)

Frequency (MHz)	5825.000000
Relative permittivity (real part)	48.538752
Conductivity (S/m)	6.147318
Power drift (%)	-1.520000
Ambient Temperature:	22.0°C
Liquid Temperature:	21.8°C
ConvF:	36.745,34.115,36.174
Crest factor:	1:1

SURFACE SAR



VOLUME SAR



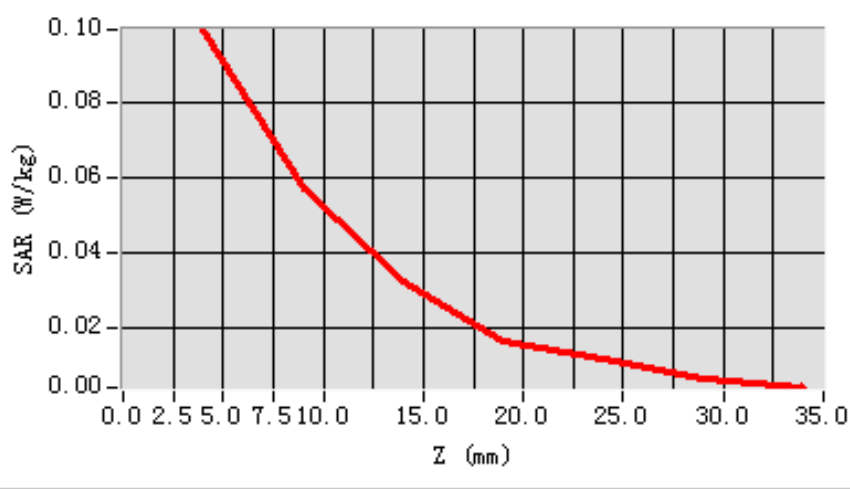
Maximum location: X=24.00, Y=-40.00

SAR 10g (W/Kg)	0.054121
SAR 1g (W/Kg)	0.096307

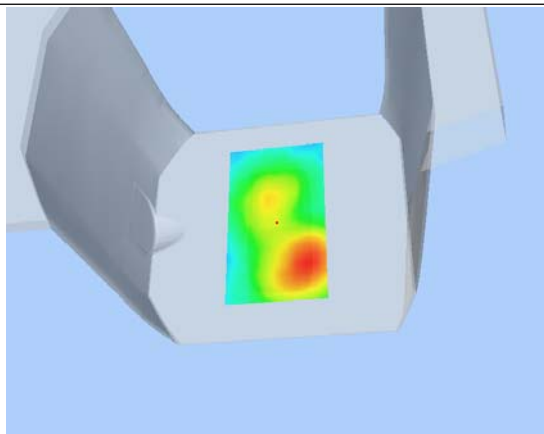
Z Axis Scan

Z (mm)	0.00	4.00	9.00	14.00	19.00	24.00	29.00
SAR (W/Kg)	0.0000	0.0995	0.0569	0.0323	0.0163	0.0117	0.0061

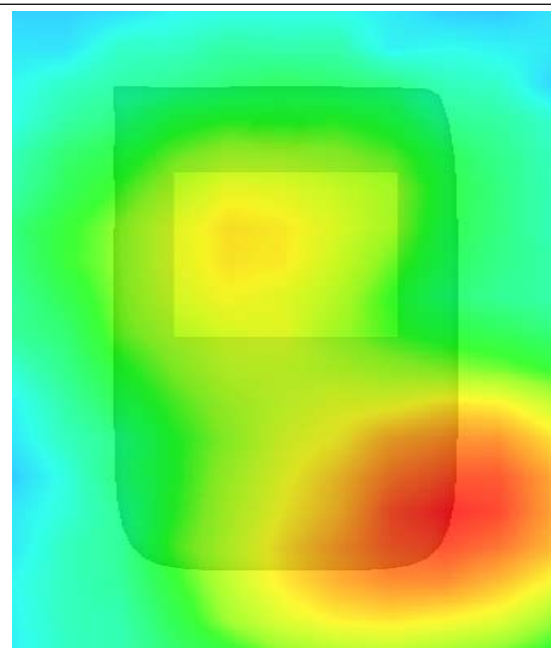
SAR, Z Axis Scan (X = 24, Y = -40)



3D scen shot



Hot spot position



MEASUREMENT 61

Type: Phone measurement (Complete)

Area scan resolution: dx=8mm,dy=8mm

Zoom scan resolution: dx=4mm, dy=4mm, dz=2mm

Date of measurement: 2013.1.6

Measurement duration: 9 minutes 10 seconds

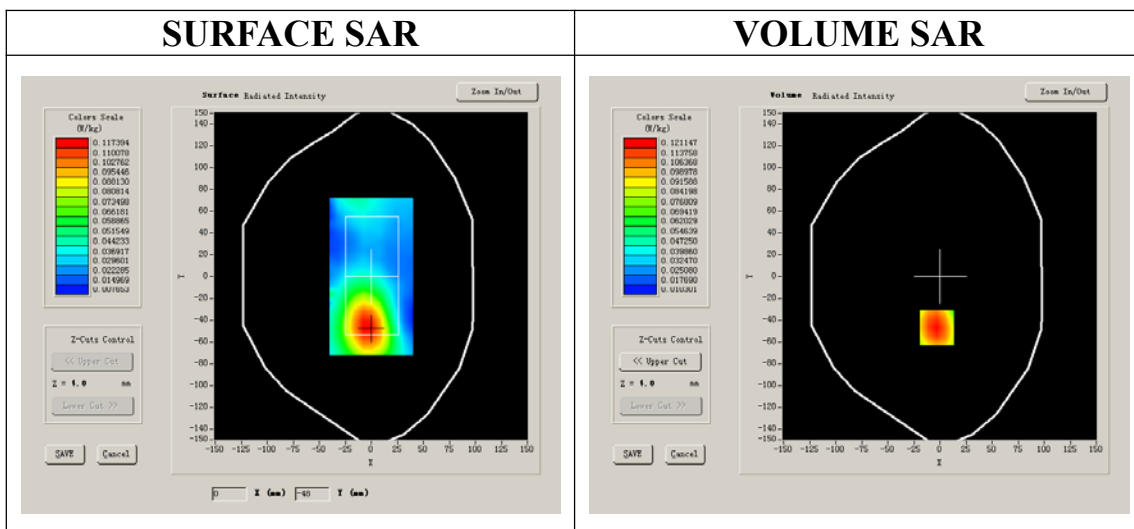
A. Experimental conditions.

Phantom File	surf_sam_plan.txt
Phantom	Validation plane
Device Position	Body
Band	802.11A
Channels	High
Signal	OFDM

B. SAR Measurement Results

Higher Band SAR (Channel 165)

Frequency (MHz)	5825.000000
Relative permittivity (real part)	48.538752
Conductivity (S/m)	6.147318
Power drift (%)	-2.420000
Ambient Temperature:	22.0°C
Liquid Temperature:	21.8°C
ConvF:	36.745,34.115,36.174
Crest factor:	1:1



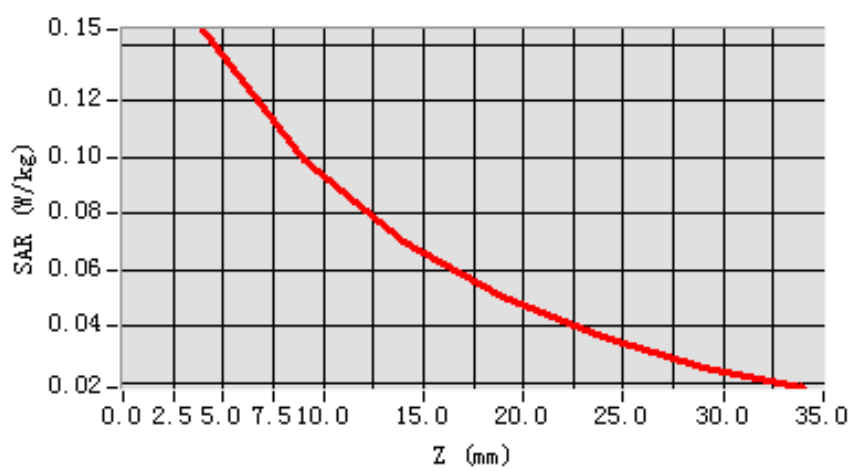
Maximum location: X=-3.00, Y=-47.00

SAR 10g (W/Kg)	0.093076
SAR 1g (W/Kg)	0.142400

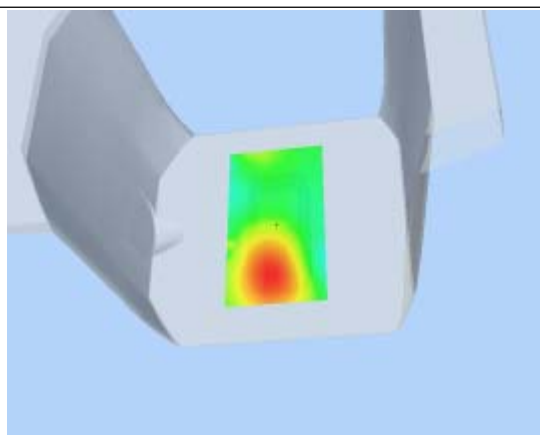
Z Axis Scan

Z (mm)	0.00	4.00	9.00	14.00	19.00	24.00	29.00
SAR (W/Kg)	0.0000	0.1454	0.0992	0.0699	0.0504	0.0366	0.0255

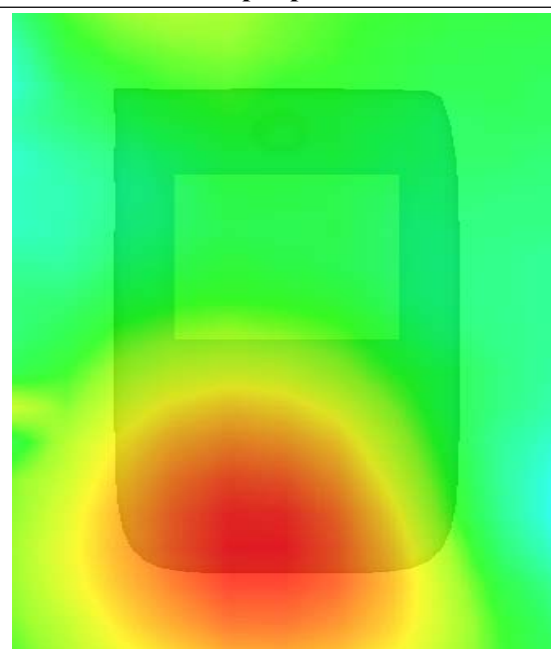
SAR, Z Axis Scan (X = -3, Y = -47)



3D scen shot



Hot spot position



MEASUREMENT 62

Type: Phone measurement (Complete)

Area scan resolution: dx=8mm,dy=8mm

Zoom scan resolution: dx=4mm, dy=4mm, dz=2mm

Date of measurement: 2013.1.6

Measurement duration: 9 minutes 10 seconds

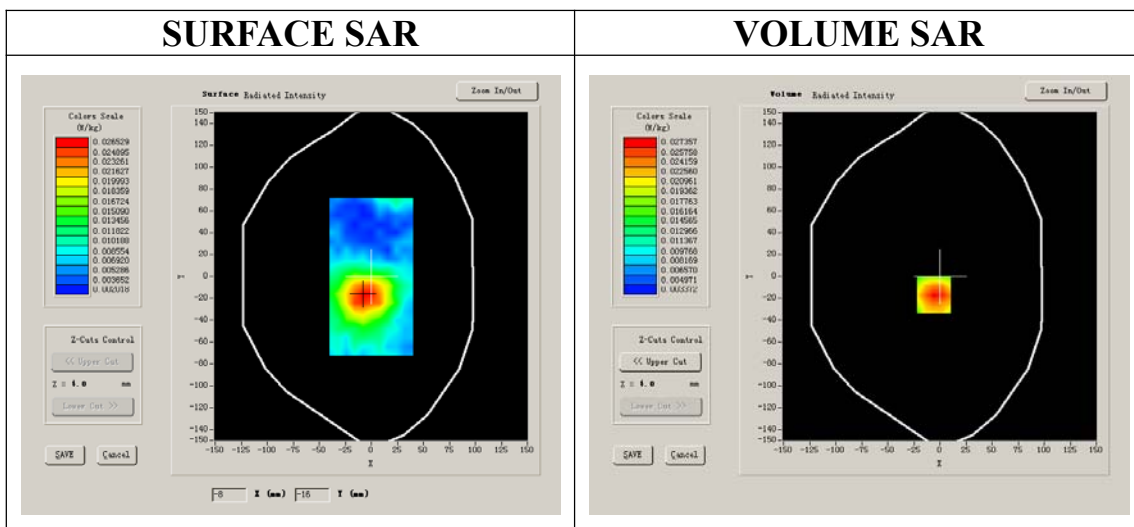
A. Experimental conditions.

Phantom File	surf_sam_plan.txt
Phantom	Validation plane
Device Position	Body
Band	802.11A
Channels	High
Signal	OFDM

B. SAR Measurement Results

Higher Band SAR (Channel 165)

Frequency (MHz)	5825.000000
Relative permittivity (real part)	48.538752
Conductivity (S/m)	6.147318
Power drift (%)	-2.420000
Ambient Temperature:	22.0°C
Liquid Temperature:	21.8°C
ConvF:	36.745,34.115,36.174
Crest factor:	1:1



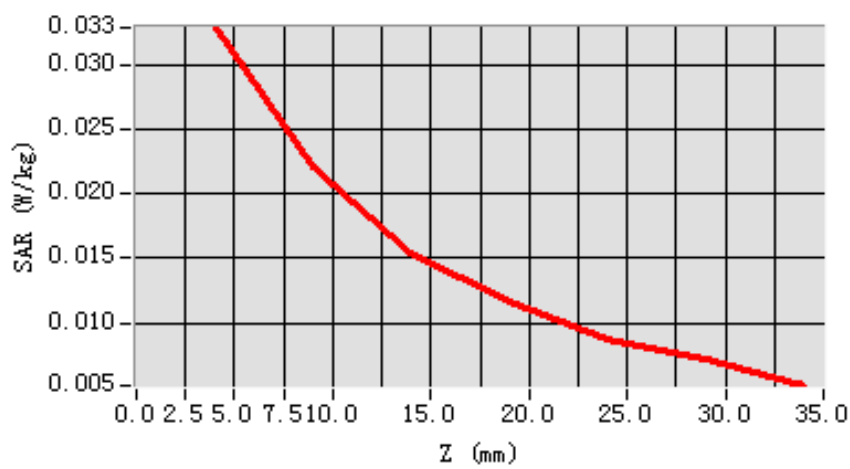
Maximum location: X=-6.00, Y=-17.00

SAR 10g (W/Kg)	0.020568
SAR 1g (W/Kg)	0.031370

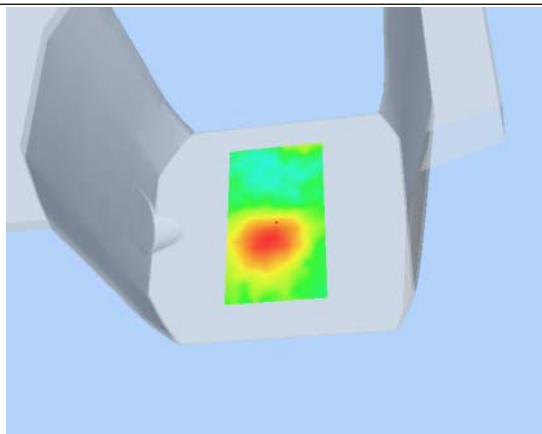
Z Axis Scan

Z (mm)	0.00	4.00	9.00	14.00	19.00	24.00	29.00
SAR (W/Kg)	0.0000	0.0328	0.0221	0.0155	0.0117	0.0087	0.0073

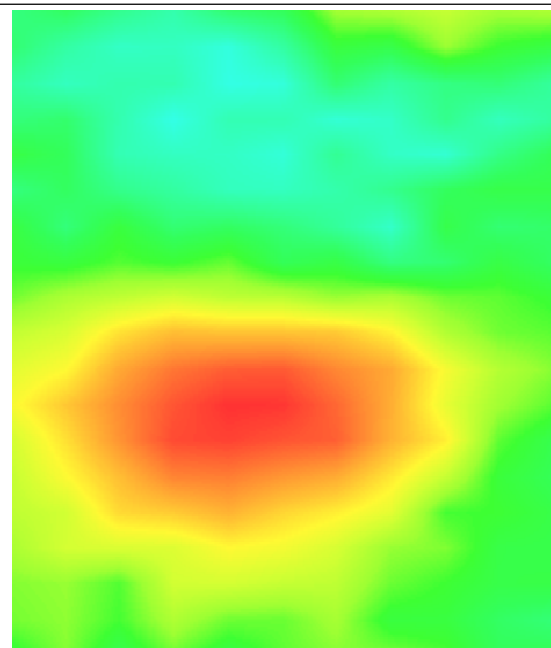
SAR, Z Axis Scan (X = -6, Y = -17)



3D scen shot



Hot spot position



System Performance Check Data(Head)

Type: Phone measurement (Complete)

Area scan resolution: dx=8mm,dy=8mm

Zoom scan resolution: dx=8mm, dy=8mm, dz=5mm

Date of measurement: 2013.1.4

Measurement duration: 13 minutes 27 seconds

A. Experimental conditions.

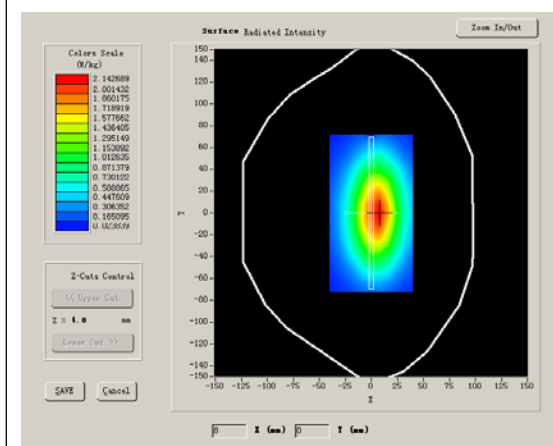
Phantom File	surf_sam_plan.txt
Phantom	Flat Plane
Device Position	
Band	835MHz
Channels	
Signal	CW

B. SAR Measurement Results

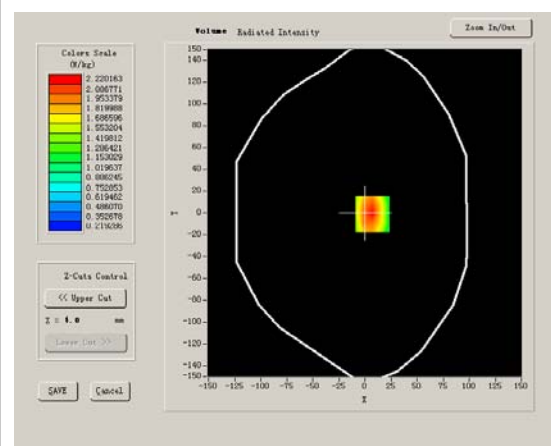
Band SAR

Frequency (MHz)	835.000000
Relative permittivity (real part)	41.631854
Conductivity (S/m)	0.912487
Power drift (%)	-0.310000
Ambient Temperature:	22.4°C
Liquid Temperature:	21.5°C
ConvF:	28.479,25.214,27.196
Crest factor:	1:1

SURFACE SAR



VOLUME SAR



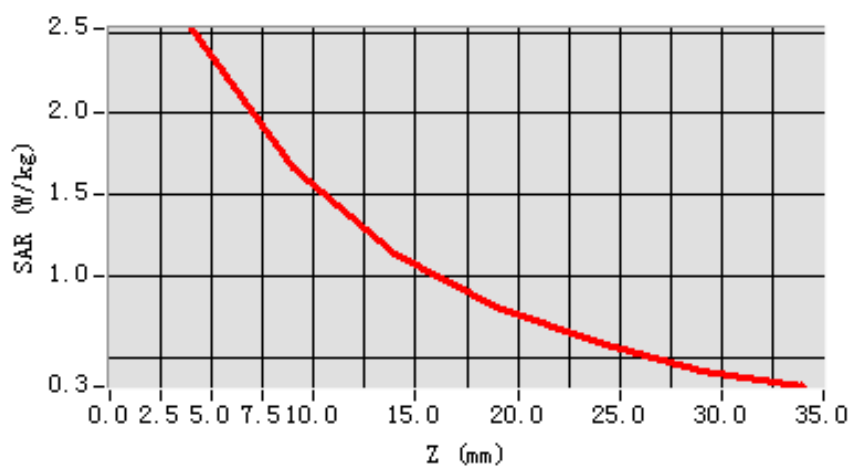
Maximum location: X=7.00, Y=-1.00

SAR 10g (W/Kg)	1.539476
SAR 1g (W/Kg)	2.385979

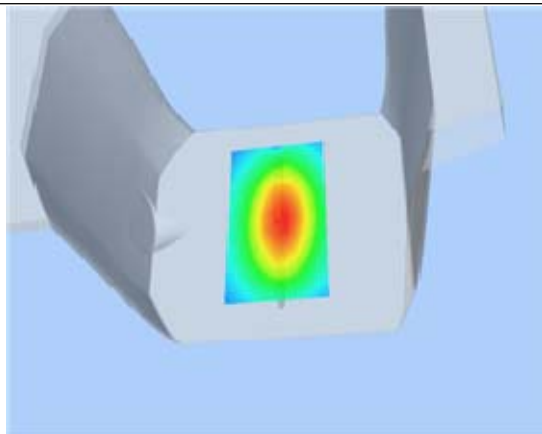
Z Axis Scan

Z (mm)	0.00	4.00	9.00	14.00	19.00	24.00	29.00
SAR (W/Kg)	0.0000	2.5209	1.6629	1.1437	0.8075	0.5889	0.4143

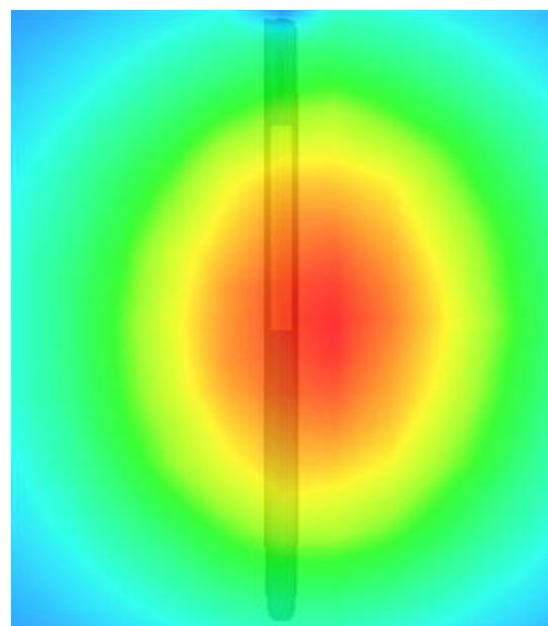
SAR, Z Axis Scan (X = 7, Y = -1)



3D scene shot



Hot spot position



System Performance Check Data(Body)

Type: Phone measurement (Complete)

Area scan resolution: dx=8mm,dy=8mm

Zoom scan resolution: dx=8mm, dy=8mm, dz=5mm

Date of measurement: 2013.1.4

Measurement duration: 13 minutes 27 seconds

A. Experimental conditions.

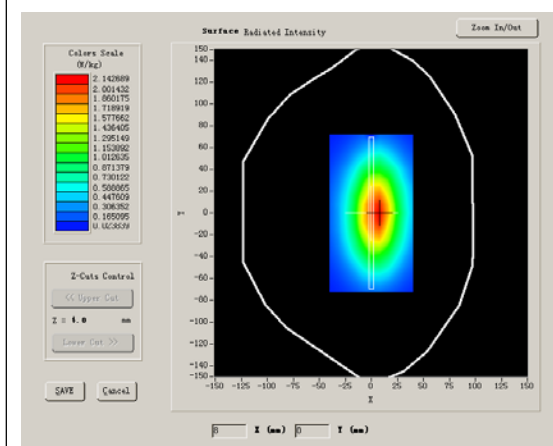
Phantom File	surf_sam_plan.txt
Phantom	Flat Plane
Device Position	
Band	835MHz
Channels	
Signal	CW

B. SAR Measurement Results

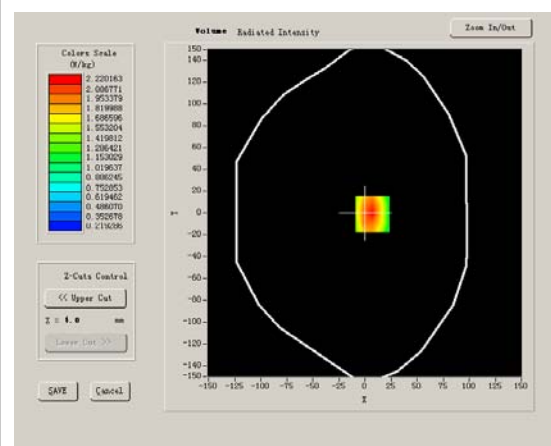
Band SAR

Frequency (MHz)	835.000000
Relative permittivity (real part)	55.016124
Conductivity (S/m)	0.951510
Power drift (%)	-0.170000
Ambient Temperature:	22.4°C
Liquid Temperature:	21.5°C
ConvF:	28.559,25.681,27.588
Crest factor:	1:1

SURFACE SAR



VOLUME SAR



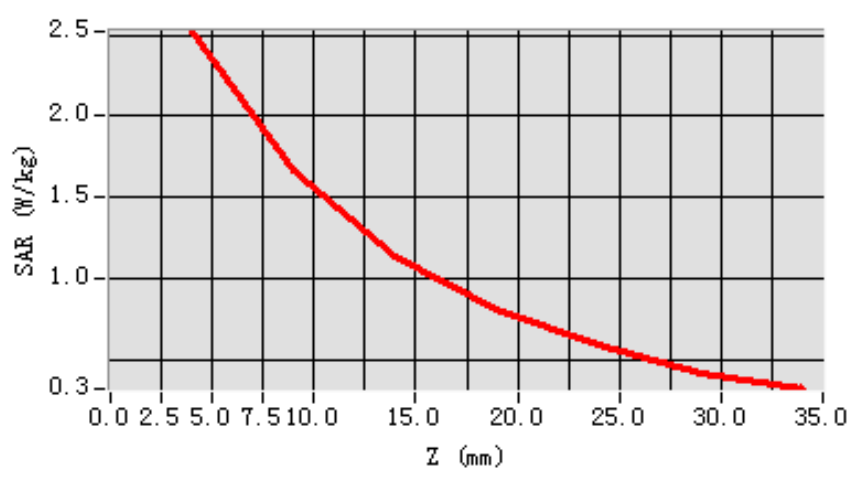
Maximum location: X=7.00, Y=-1.00

SAR 10g (W/Kg)	1.497122
SAR 1g (W/Kg)	2.379818

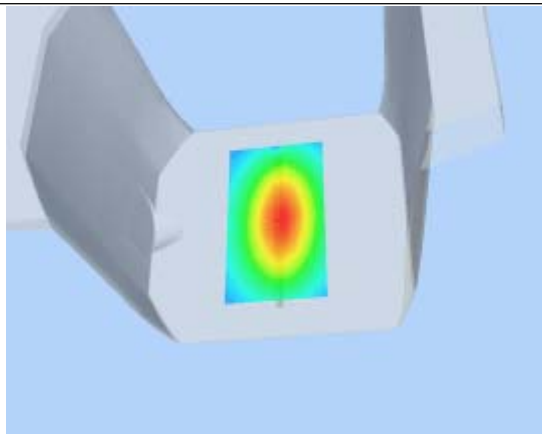
Z Axis Scan

Z (mm)	0.00	4.00	9.00	14.00	19.00	24.00	29.00
SAR (W/Kg)	0.0000	2.5209	1.6629	1.1437	0.8075	0.5889	0.4143

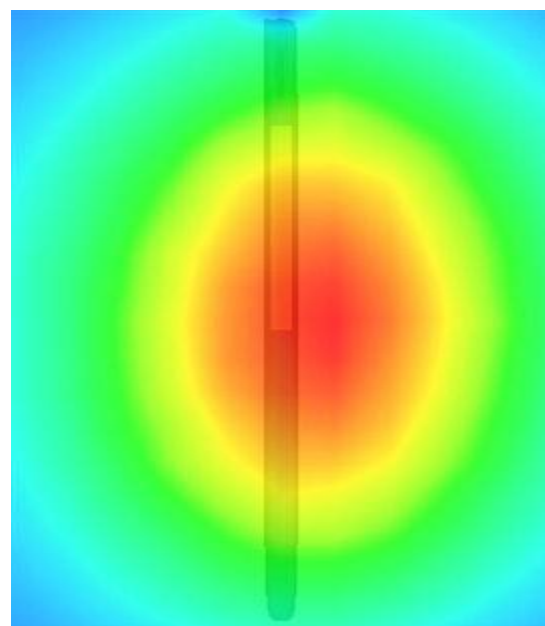
SAR, Z Axis Scan (X = 7, Y = -1)



3D scene shot



Hot spot position



System Performance Check Data(Head)

Type: Phone measurement (Complete)

Area scan resolution: dx=8mm,dy=8mm

Zoom scan resolution: dx=8mm, dy=8mm, dz=5mm

Date of measurement: 2013.1.5

Measurement duration: 13 minutes 27 seconds

A. Experimental conditions.

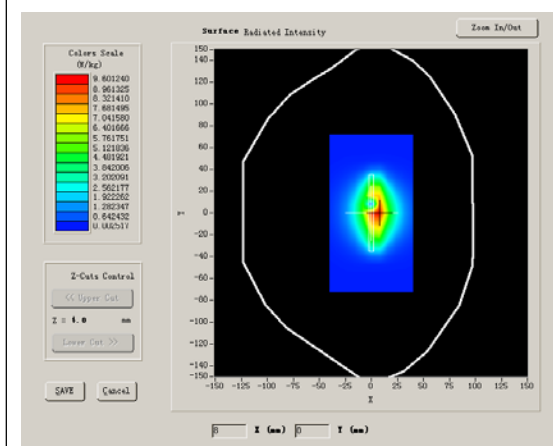
Phantom File	surf_sam_plan.txt
Phantom	Flat Plane
Device Position	
Band	1800MHz
Channels	
Signal	CW

B. SAR Measurement Results

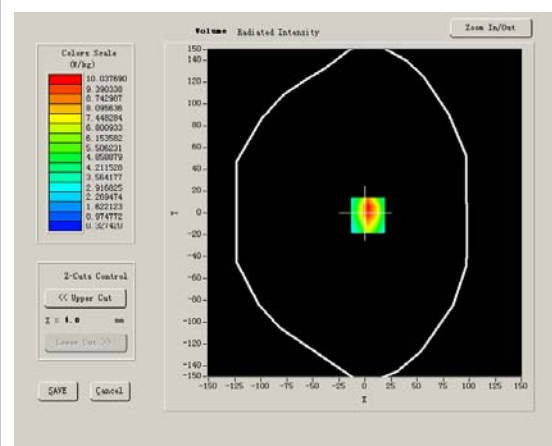
Band SAR

Frequency (MHz)	1800.000000
Relative permittivity (real part)	41.253820
Conductivity (S/m)	1.415742
Power drift (%)	-0.820000
Ambient Temperature:	22.3°C
Liquid Temperature:	22.6°C
ConvF:	42.533,36.791,41.019
Crest factor:	1:1

SURFACE SAR



VOLUME SAR



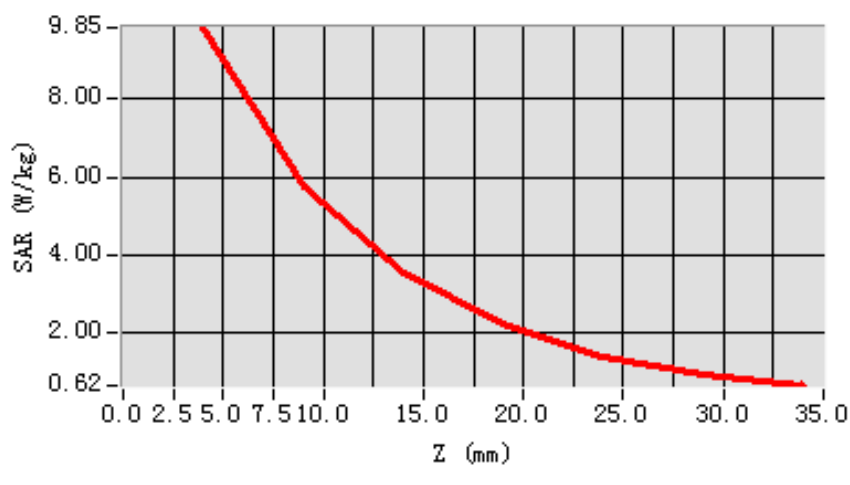
Maximum location: X=3.00, Y=-2.00

SAR 10g (W/Kg)	5.233842
SAR 1g (W/Kg)	9.556460

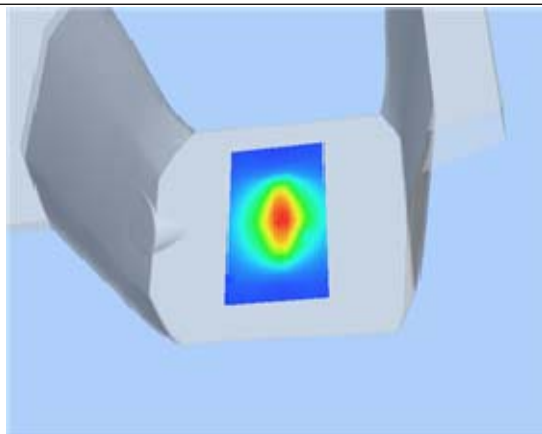
Z Axis Scan

Z (mm)	0.00	4.00	9.00	14.00	19.00	24.00	29.00
SAR (W/Kg)	0.0000	9.8504	5.7592	3.5340	2.1937	1.3905	0.9106

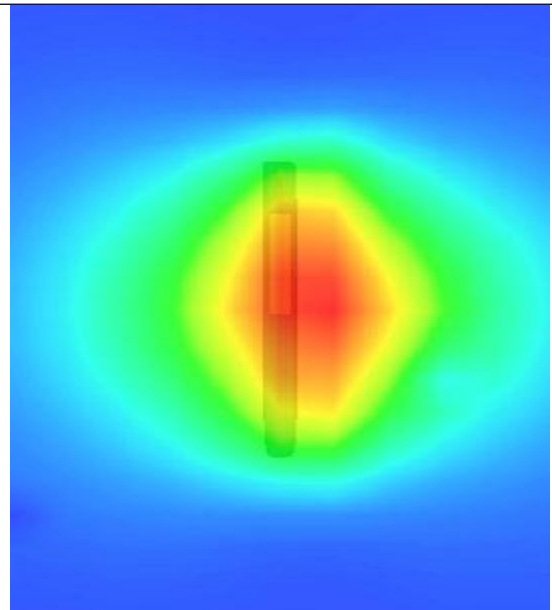
SAR, Z Axis Scan (X = 3, Y = -2)



3D scene shot



Hot spot position



System Performance Check Data(Body)

Type: Phone measurement (Complete)

Area scan resolution: dx=8mm,dy=8mm

Zoom scan resolution: dx=8mm, dy=8mm, dz=5mm

Date of measurement: 2013.1.5

Measurement duration: 13 minutes 26 seconds

A. Experimental conditions.

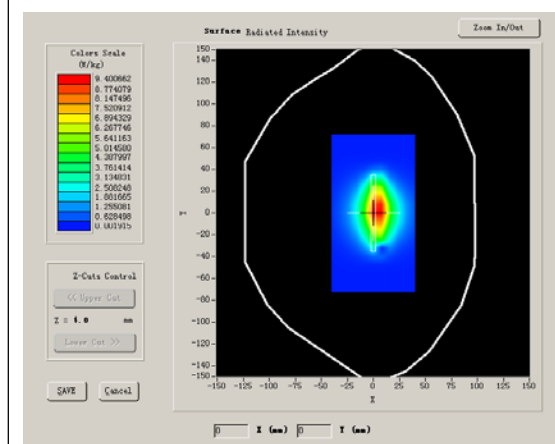
Phantom File	surf_sam_plan.txt
Phantom	Flat Plane
Device Position	
Band	1800MHz
Channels	
Signal	CW

B. SAR Measurement Results

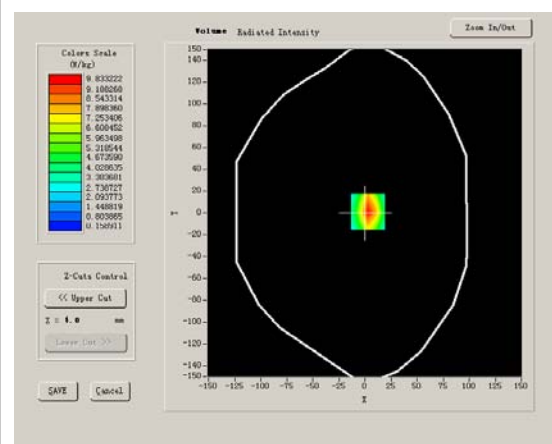
Band SAR

Frequency (MHz)	1800.000000
Relative permittivity (real part)	53.283431
Conductivity (S/m)	1.508114
Power drift (%)	-0.710000
Ambient Temperature:	22.3°C
Liquid Temperature:	22.6°C
ConvF:	42.982, 37.514, 41.835
Crest factor:	1:1

SURFACE SAR



VOLUME SAR



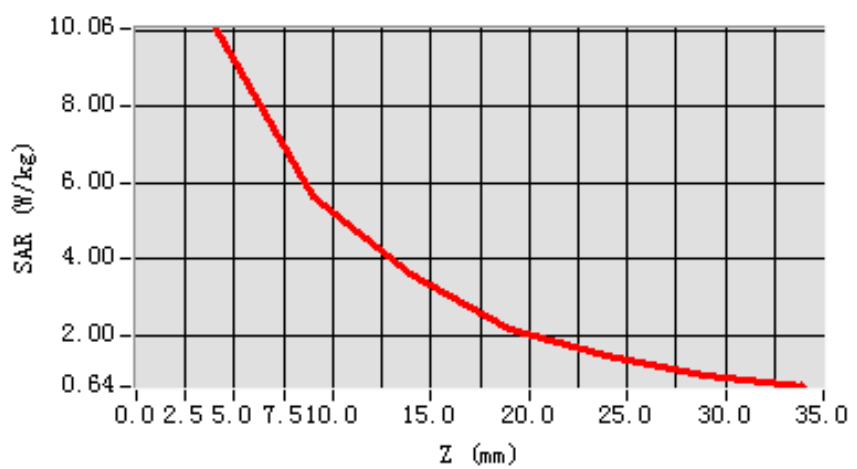
Maximum location: X=3.00, Y=1.00

SAR 10g (W/Kg)	4.981611
SAR 1g (W/Kg)	9.340177

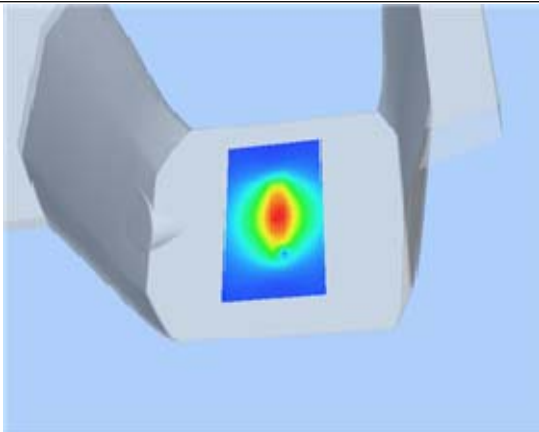
Z Axis Scan

Z (mm)	0.00	4.00	9.00	14.00	19.00	24.00	29.00
SAR (W/Kg)	0.0000	10.0621	5.6445	3.6226	2.1642	1.4521	0.9078

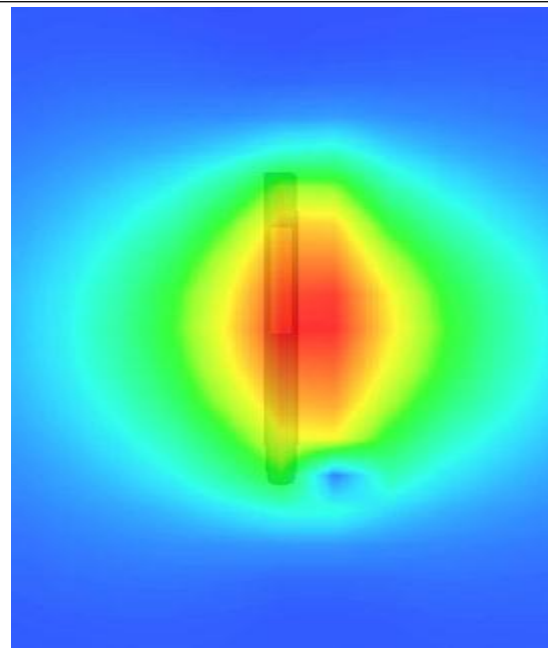
SAR, Z Axis Scan (X = 3, Y = 1)



3D scene shot



Hot spot position



System Performance Check Data(Head)

Type: Phone measurement (Complete)

Area scan resolution: dx=8mm,dy=8mm

Zoom scan resolution: dx=8mm, dy=8mm, dz=5mm

Date of measurement: 2013.1.5

Measurement duration: 13 minutes 27 seconds

A. Experimental conditions.

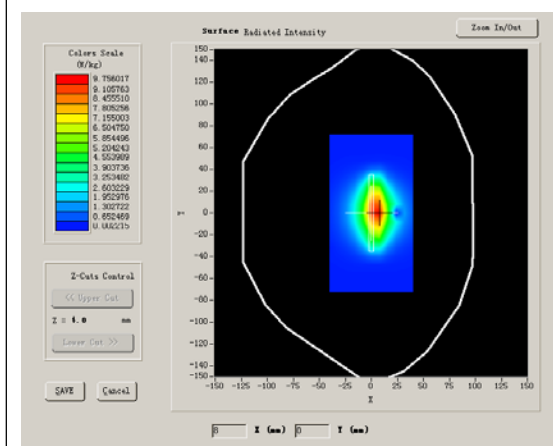
Phantom File	surf_sam_plan.txt
Phantom	Flat Plane
Device Position	
Band	1900MHz
Channels	
Signal	CW

B. SAR Measurement Results

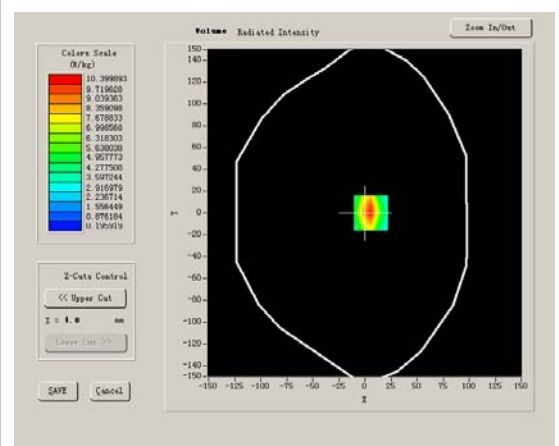
Band SAR

Frequency (MHz)	1900.000000
Relative permittivity (real part)	41.253820
Conductivity (S/m)	1.415742
Power drift (%)	-0.140000
Ambient Temperature:	22.3°C
Liquid Temperature:	22.7°C
ConvF:	40.136,34.843,38.721
Crest factor:	1:1

SURFACE SAR



VOLUME SAR



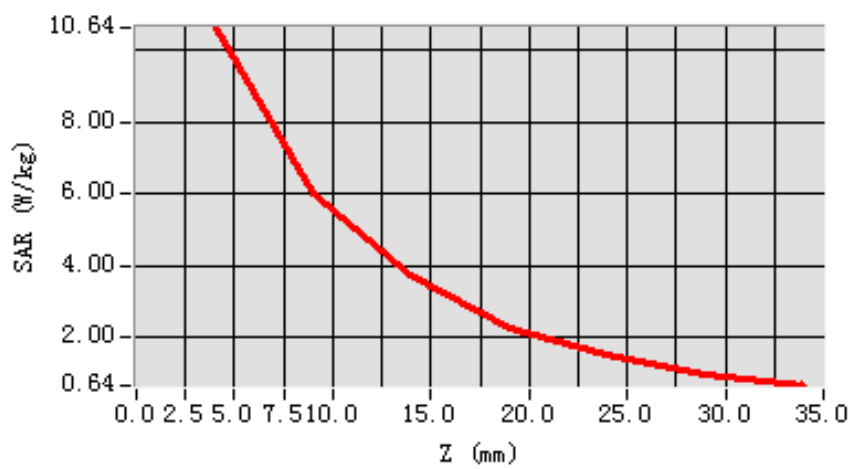
Maximum location: X=6.00, Y=0.00

SAR 10g (W/Kg)	6.145210
SAR 1g (W/Kg)	9.790543

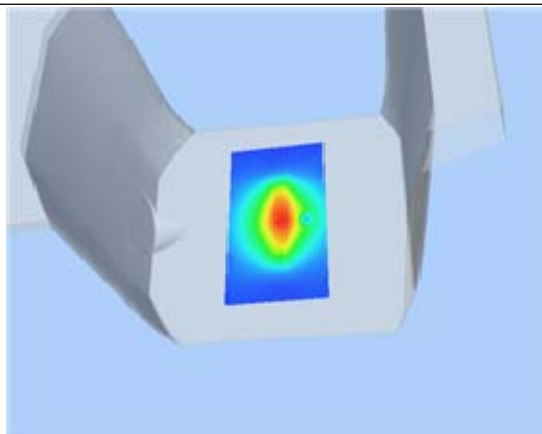
Z Axis Scan

Z (mm)	0.00	4.00	9.00	14.00	19.00	24.00	29.00
SAR (W/Kg)	0.0000	10.6419	6.0043	3.7297	2.2606	1.5119	0.9792

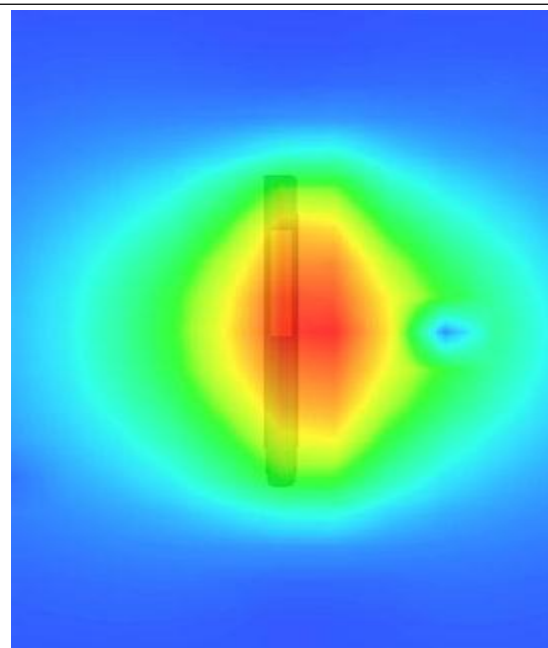
SAR, Z Axis Scan (X = 6, Y = 0)



3D scen shot



Hot spot position



System Performance Check Data(Body)

Type: Phone measurement (Complete)

Area scan resolution: dx=8mm,dy=8mm

Zoom scan resolution: dx=8mm, dy=8mm, dz=5mm

Date of measurement: 2013.1.5

Measurement duration: 13 minutes 26 seconds

A. Experimental conditions.

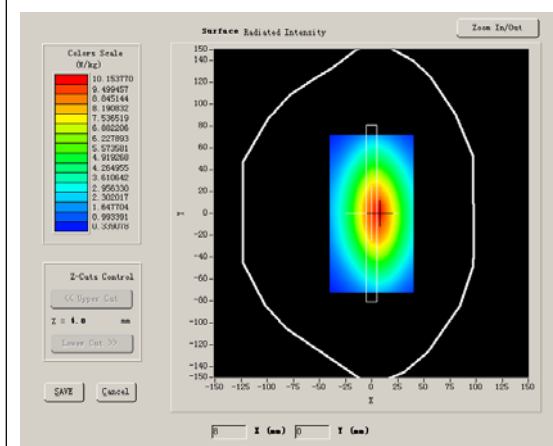
Phantom File	surf_sam_plan.txt
Phantom	Flat Plane
Device Position	
Band	1900MHz
Channels	
Signal	CW

B. SAR Measurement Results

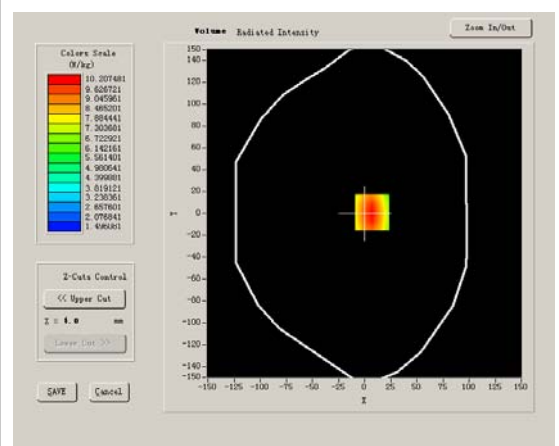
Band SAR

Frequency (MHz)	1900.000000
Relative permittivity (real part)	53.283431
Conductivity (S/m)	1.508114
Power drift (%)	-0.030000
Ambient Temperature:	22.3°C
Liquid Temperature:	22.7°C
ConvF:	40.625,34.773,38.535
Crest factor:	1:1

SURFACE SAR



VOLUME SAR



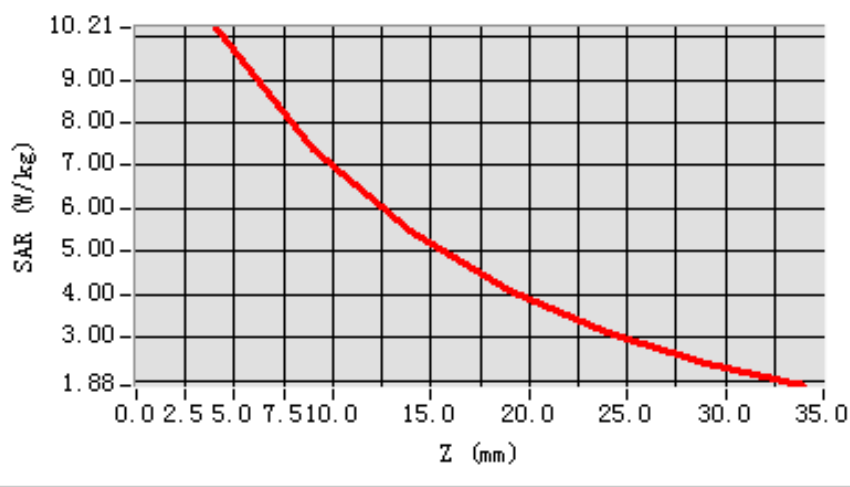
Maximum location: X=7.00, Y=1.00

SAR 10g (W/Kg)	6.628519
SAR 1g (W/Kg)	9.746173

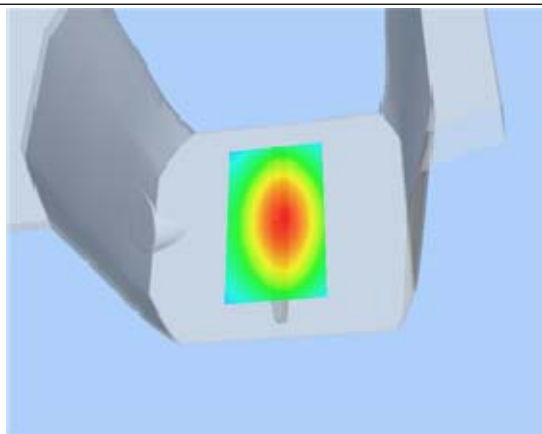
Z Axis Scan

Z (mm)	0.00	4.00	9.00	14.00	19.00	24.00	29.00
SAR (W/Kg)	0.0000	10.2075	7.3996	5.4654	4.1101	3.1286	2.4128

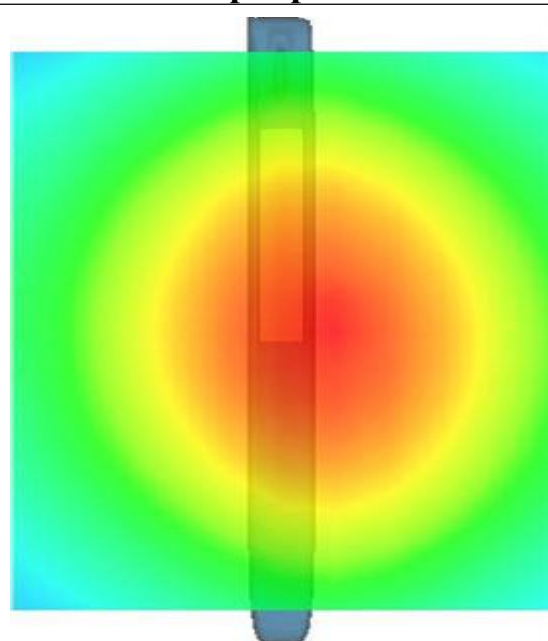
SAR, Z Axis Scan (X = 7, Y = 1)



3D scene shot



Hot spot position



System Performance Check Data(Head)

Type: Phone measurement (Complete)

Area scan resolution: dx=8mm,dy=8mm

Zoom scan resolution: dx=5mm, dy=5mm, dz=5mm

Date of measurement: 2013.1.6

Measurement duration: 13 minutes 27 seconds

A. Experimental conditions.

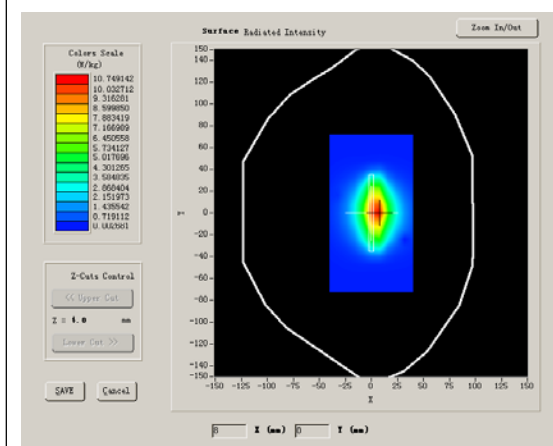
Phantom File	surf_sam_plan.txt
Phantom	Validation plane
Device Position	
Band	2450MHz
Channels	
Signal	CW

B. SAR Measurement Results

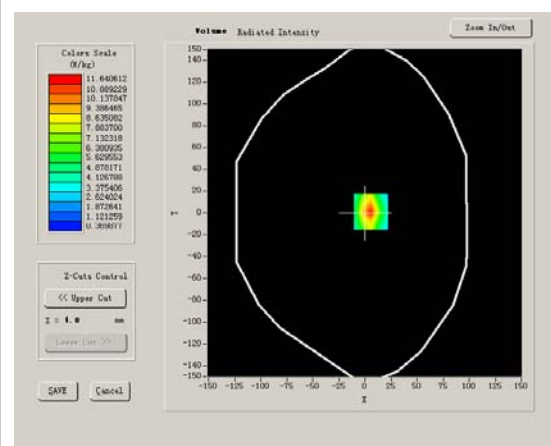
Band SAR

Frequency (MHz)	2450.000000
Relative permittivity (real part)	39.723451
Conductivity (S/m)	1.794326
Power Drift (%)	0.560000
Ambient Temperature:	22.0°C
Liquid Temperature:	21.8°C
ConvF:	39.563,33.614,37.677
Crest factor:	1:1

SURFACE SAR



VOLUME SAR



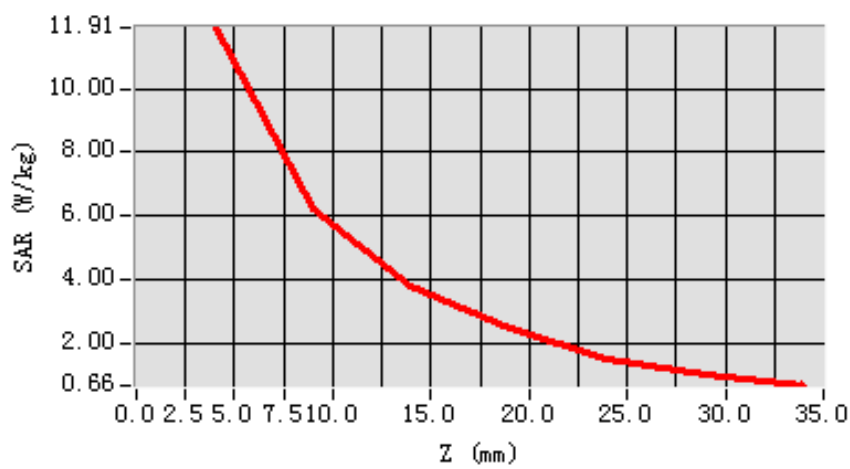
Maximum location: X=6.00, Y=1.00

SAR 10g (W/Kg)	7.638478
SAR 1g (W/Kg)	12.043675

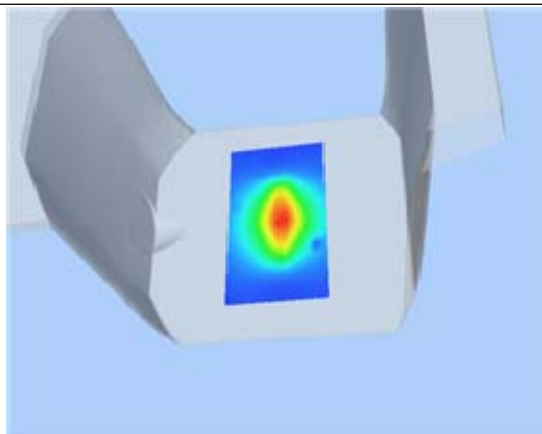
Z Axis Scan

Z (mm)	0.00	4.00	9.00	14.00	19.00	24.00	29.00
SAR (W/Kg)	0.0000	11.9115	6.2096	3.8187	2.4504	1.5036	1.0219

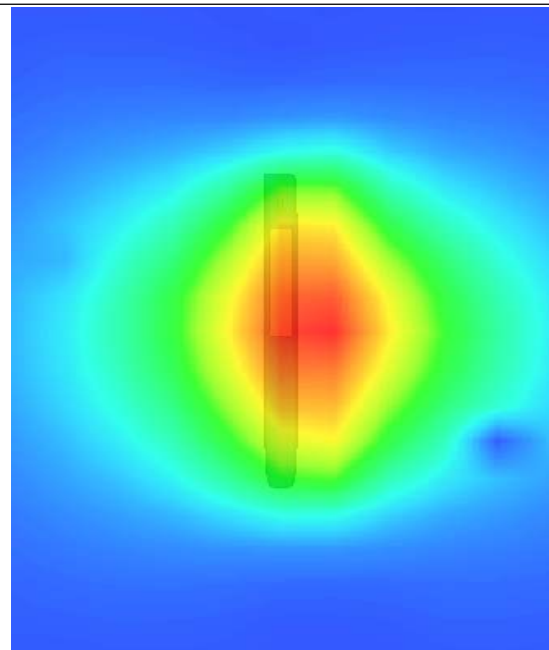
SAR, Z Axis Scan (X = 6, Y = 1)



3D scen shot



Hot spot position



System Performance Check Data(Body)

Type: Phone measurement (Complete)

Area scan resolution: dx=8mm,dy=8mm

Zoom scan resolution: dx=5mm, dy=5mm, dz=5mm

Date of measurement: 2013.1.6

Measurement duration: 13 minutes 27 seconds

A. Experimental conditions.

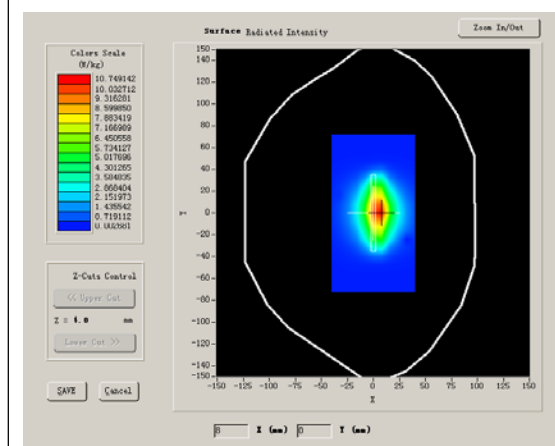
Phantom File	surf_sam_plan.txt
Phantom	Validation plane
Device Position	
Band	2450MHz
Channels	
Signal	CW

B. SAR Measurement Results

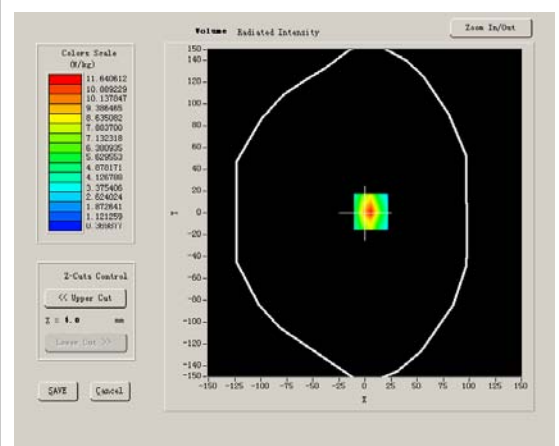
Band SAR

Frequency (MHz)	2450.000000
Relative permittivity (real part)	53.461064
Conductivity (S/m)	1.853317
Power Drift (%)	1.080000
Ambient Temperature:	22.0°C
Liquid Temperature:	21.8°C
ConvF:	39.772,33.946,37.835
Crest factor:	1:1

SURFACE SAR



VOLUME SAR



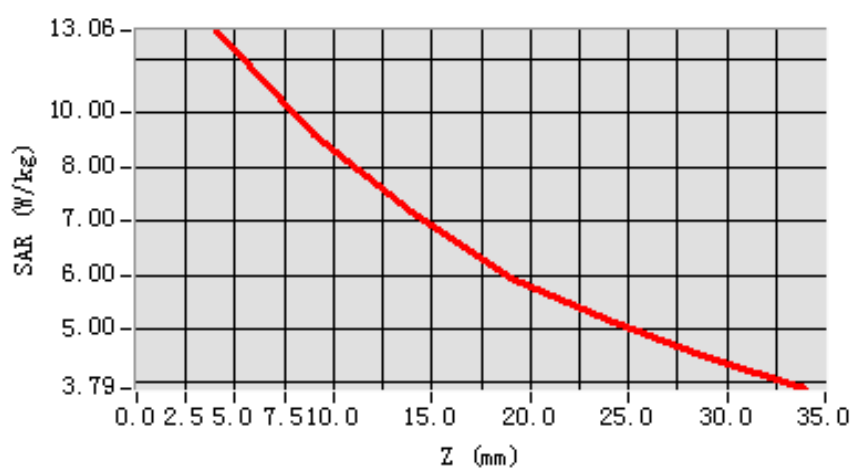
Maximum location: X=-1.00, Y=-50.00

SAR 10g (W/Kg)	7.156773
SAR 1g (W/Kg)	12.789110

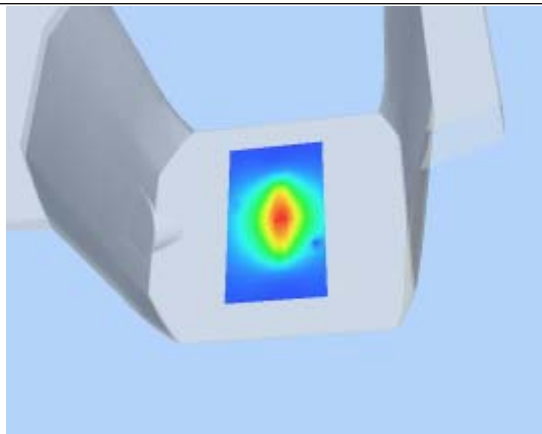
Z Axis Scan

Z (mm)	0.00	4.00	9.00	14.00	19.00
SAR (W/Kg)	0.0000	13.1279	6.8312	3.5991	1.3473

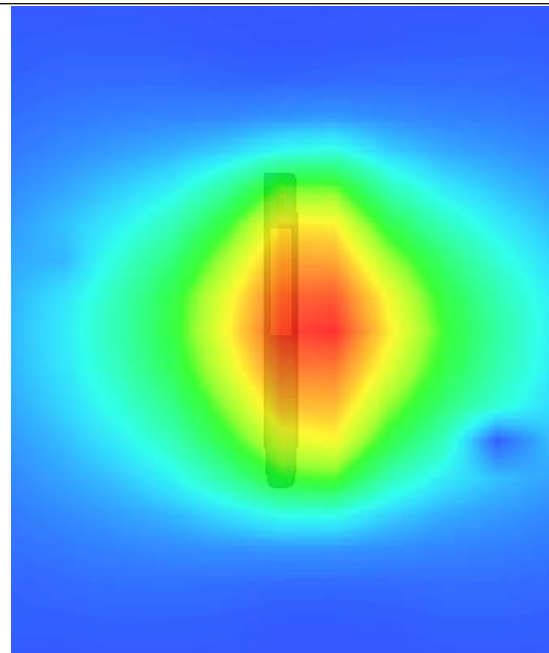
SAR, Z Axis Scan (X = -1, Y = -50)



3D scen shot



Hot spot position



System Performance Check Data(Head)

Type: Phone measurement (Complete)

Area scan resolution: dx=8mm,dy=8mm

Zoom scan resolution: dx=5mm, dy=5mm, dz=5mm

Date of measurement: 2013.1.6

Measurement duration: 13 minutes 27 seconds

A. Experimental conditions.

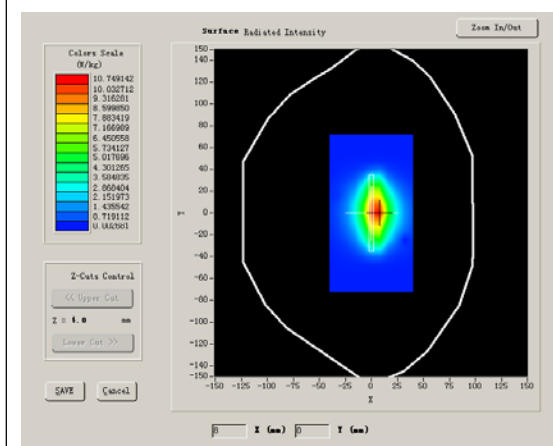
Phantom File	surf_sam_plan.txt
Phantom	Validation plane
Device Position	
Band	5800MHz
Channels	
Signal	CW

B. SAR Measurement Results

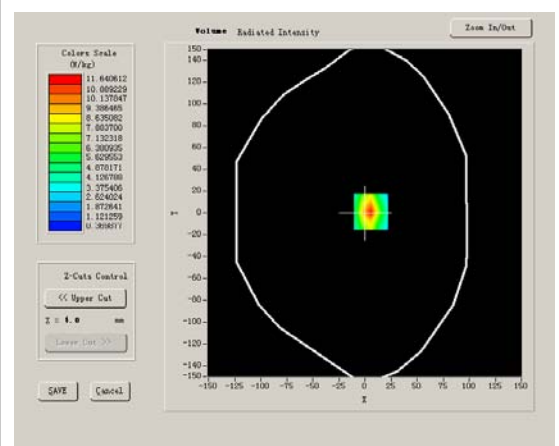
Band SAR

Frequency (MHz)	5800.000000
Relative permittivity (real part)	34.018247
Conductivity (S/m)	5.351094
Power Drift (%)	-0.610000
Ambient Temperature:	22.0°C
Liquid Temperature:	21.8°C
ConvF:	36.142,34.568,35.420
Crest factor:	1:1

SURFACE SAR



VOLUME SAR



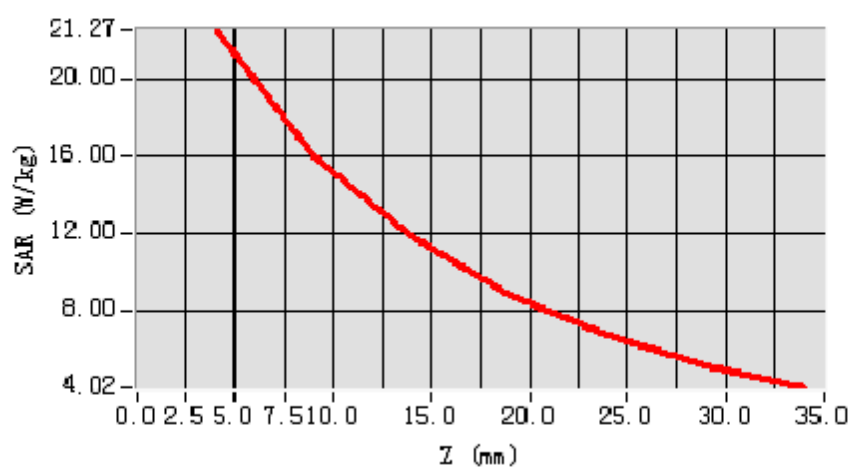
Maximum location: X=6.00, Y=1.00

SAR 10g (W/Kg)	5.138478
SAR 1g (W/Kg)	21.154274

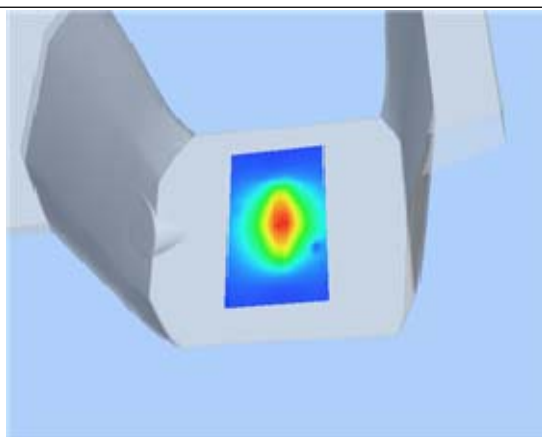
Z Axis Scan

Z (mm)	0.00	4.00	9.00	14.00	19.00	24.00	29.00
SAR (W/Kg)	0.0000	21.2656	17.0046	12.9376	7.5621	4.3697	2.5907

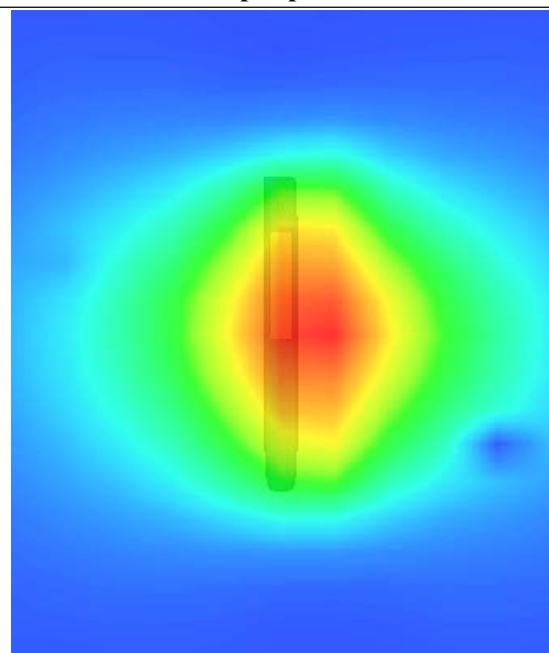
SAR, Z Axis Scan (X = 6, Y = 0)



3D scen shot



Hot spot position



System Performance Check Data(Body)

Type: Phone measurement (Complete)

Area scan resolution: dx=8mm,dy=8mm

Zoom scan resolution: dx=5mm, dy=5mm, dz=5mm

Date of measurement: 2013.1.6

Measurement duration: 13 minutes 27 seconds

A. Experimental conditions.

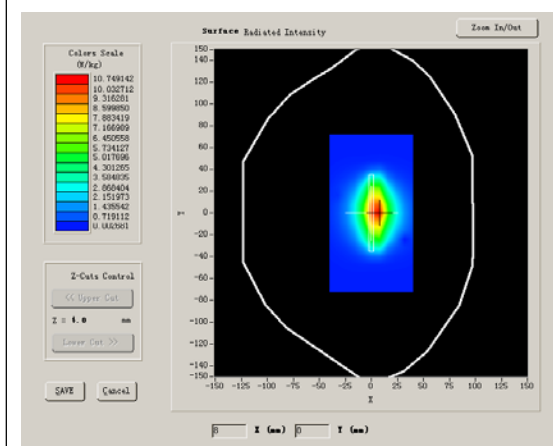
Phantom File	surf_sam_plan.txt
Phantom	Validation plane
Device Position	
Band	5800MHz
Channels	
Signal	CW

B. SAR Measurement Results

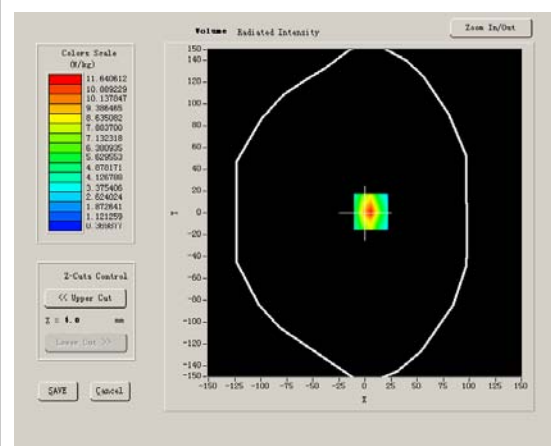
Band SAR

Frequency (MHz)	5800.000000
Relative permittivity (real part)	48.538752
Conductivity (S/m)	6.147318
Power Drift (%)	-1.140000
Ambient Temperature:	22.0°C
Liquid Temperature:	21.8°C
ConvF:	36.745,34.115,36.174
Crest factor:	1:1

SURFACE SAR



VOLUME SAR



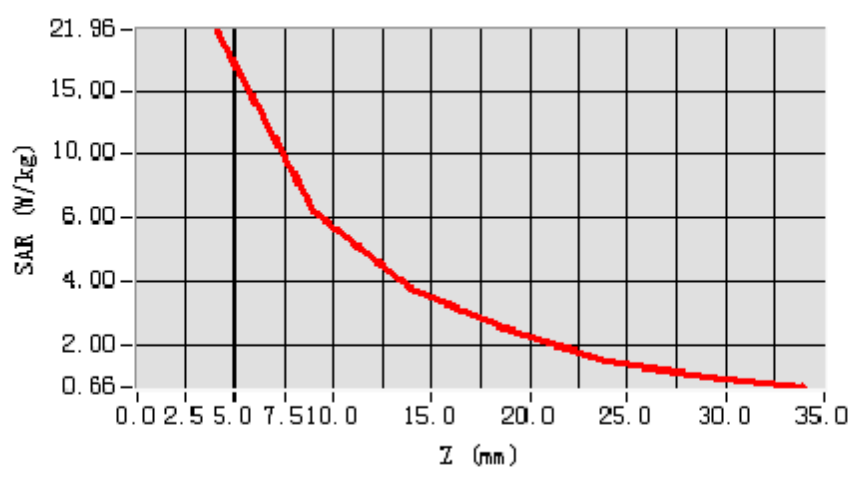
Maximum location: X=-1.00, Y=-50.00

SAR 10g (W/Kg)	5.231740
SAR 1g (W/Kg)	21.708016

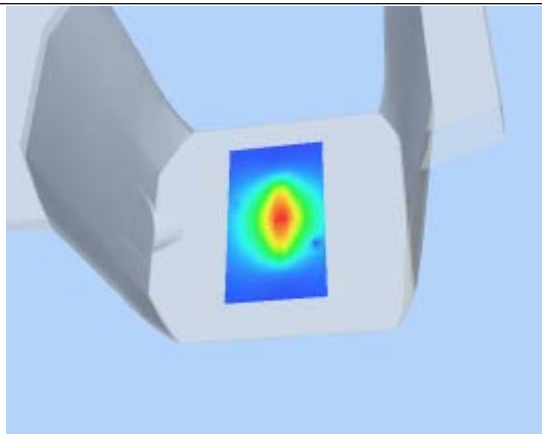
Z Axis Scan

Z (mm)	0.00	4.00	9.00	14.00	19.00
SAR (W/Kg)	0.0000	21.6231	16.8072	9.6350	4.3473

SAR, Z Axis Scan (X = 6, Y = 1)



3D scen shot



Hot spot position

