

System Check_Head_835MHz

DUT: D835V2 - SN4d167

Communication System: CW; Frequency: 835.000 MHz; Duty Cycle: 1:1

Medium: HSL_835_240514 Medium parameters used: $f= 835.000$ MHz; $\sigma= 0.921$ S/m; $\epsilon_r = 41.5$

Ambient Temperature: 23.9°C; Liquid Temperature: 22.9°C

DASY6 Configuration:

- Probe: EX3DV4 - SN7694; ConvF(9.48, 9.48, 9.48); Calibrated: 2023-10-26
- Sensor-Surface: 1.4 mm
- Electronics: DAE4 Sn1399; Calibrated: 2024-03-13
- Phantom: ELI V8.0 (20deg probe tilt); Serial: 2153_0mm; Section: Flat
- Measurement Software: 16.2.4.2524
- UID: CW

Pin=17.0dBm/Area Scan (40.0 mm x 90.0 mm): Measurement Grid: 10.0 mm x 15.0 mm

SAR (1g) = 0.511 W/kg; SAR (10g) = 0.341 W/kg;

Pin=17.0dBm/Zoom Scan (30.0 mm x 30.0 mm x 30.0 mm): Measurement Grid: 6.0 mm x 6.0 mm x 1.5 mm

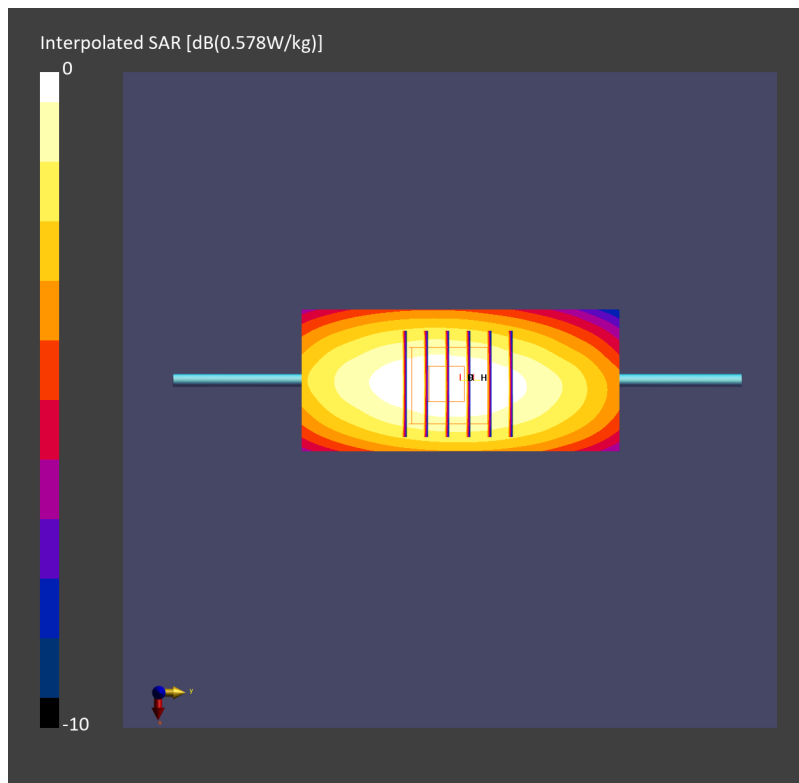
mm

Power Drift = 0.09 dB

SAR (1g) = 0.519 W/kg; SAR (8g) = 0.366 W/kg; SAR (10g) = 0.349 W/kg

Smallest distance from peaks to all points 3 dB below = 20.5 mm

Ratio of SAR at M2 to SAR at M1 = 84.3 %



System Check_Head_1750MHz

DUT: D1750V2 - SN1112

Communication System: CW; Frequency: 1750.000 MHz; Duty Cycle: 1:1

Medium: HSL_1750_240514 Medium parameters used: $f=1750.000$ MHz; $\sigma=1.36$ S/m; $\epsilon_r=40.5$

Ambient Temperature: 23.9°C; Liquid Temperature: 22.9°C

DASY6 Configuration:

- Probe: EX3DV4 - SN7694; ConvF(8.82, 8.82, 8.82); Calibrated: 2023-10-26
- Sensor-Surface: 1.4 mm
- Electronics: DAE4 Sn1399; Calibrated: 2024-03-13
- Phantom: ELI V8.0 (20deg probe tilt); Serial: 2153; Section: Flat
- Measurement Software: 16.2.4.2524
- UID: CW

Pin=17.0dBm/Area Scan (40.0 mm x 90.0 mm): Measurement Grid: 10.0 mm x 15.0 mm

SAR (1g) = 1.73 W/kg; SAR (10g) = 0.928 W/kg;

Pin=17.0dBm/Zoom Scan (30.0 mm x 30.0 mm x 30.0 mm): Measurement Grid: 6.0 mm x 6.0 mm x 1.5 mm

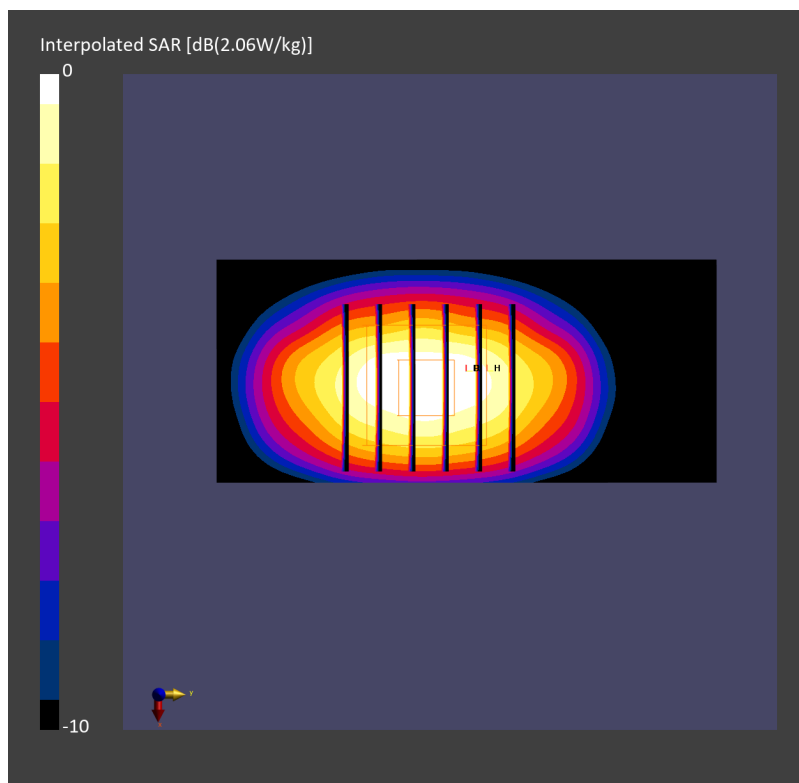
mm

Power Drift = -0.01 dB

SAR (1g) = 1.77 W/kg; SAR (8g) = 1.06 W/kg; SAR (10g) = 0.952 W/kg

Smallest distance from peaks to all points 3 dB below = 10.9 mm

Ratio of SAR at M2 to SAR at M1 = 83.4 %



System Check_Head_1900MHz**DUT: D1900V2 - SN5d185**

Communication System: CW; Frequency: 1900.000 MHz; Duty Cycle: 1:1

Medium: HSL_1900_240514 Medium parameters used: $f=1900.000$ MHz; $\sigma=1.43$ S/m; $\epsilon_r=38.9$

Ambient Temperature: 23.9°C; Liquid Temperature: 22.9°C

DASY6 Configuration:

- Probe: EX3DV4 - SN7694; ConvF(8.3, 8.3, 8.3); Calibrated: 2023-10-26
- Sensor-Surface: 1.4 mm
- Electronics: DAE4 Sn1399; Calibrated: 2024-03-13
- Phantom: ELI V8.0 (20deg probe tilt); Serial: 2153; Section: Flat
- Measurement Software: 16.2.4.2524
- UID: CW

Pin=17.0dBm/Area Scan (40.0 mm x 90.0 mm): Measurement Grid: 10.0 mm x 15.0 mm

SAR (1g) = 1.89 W/kg; SAR (10g) = 0.973 W/kg;

Pin=17.0dBm/Zoom Scan (30.0 mm x 30.0 mm x 30.0 mm): Measurement Grid: 6.0 mm x 6.0 mm x 1.5

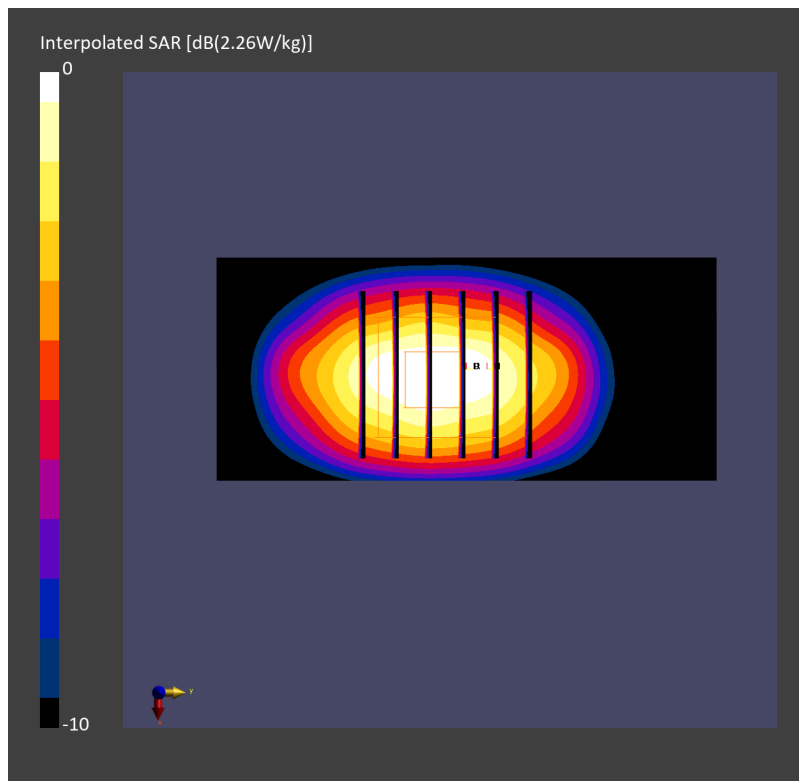
mm

Power Drift = 0.04 dB

SAR (1g) = 1.92 W/kg; SAR (8g) = 1.12 W/kg; SAR (10g) = 0.997 W/kg

Smallest distance from peaks to all points 3 dB below = 9.7 mm

Ratio of SAR at M2 to SAR at M1 = 81.2 %



System Check_Head_2600MHz

DUT: D2600V2 - SN1078

Communication System: CW; Frequency: 2600.000 MHz; Duty Cycle: 1:1
Medium: HSL_2600_240514 Medium parameters used: $f = 2600.000$ MHz; $\sigma = 2.01$ S/m; $\epsilon_r = 38.1$
Ambient Temperature: 23.9°C; Liquid Temperature: 22.9°C

DASY6 Configuration:

- Probe: EX3DV4 - SN7590; ConvF(7.80, 7.64, 7.66); Calibrated: 2024-03-19
- Sensor-Surface: 1.4 mm
- Electronics: DAE4 Sn1697; Calibrated: 2023-11-20
- Phantom: ELI V8.0 (20deg probe tilt); Serial: 2153; Section: Flat
- Measurement Software: 16.2.4.2524
- UID: CW, 0--

Pin=17.0dBm/Area Scan (40.0 mm x 80.0 mm): Measurement Grid: 10.0 mm x 10.0 mm

SAR (1g) = 2.85 W/kg; SAR (10g) = 1.32 W/kg;

Pin=17.0dBm/Zoom Scan (30.0 mm x 30.0 mm x 30.0 mm): Measurement Grid: 5.0 mm x 5.0 mm x 1.5 mm

mm

Power Drift = 0.01 dB

SAR (1g) = 2.88 W/kg; SAR (8g) = 1.49 W/kg; SAR (10g) = 1.36 W/kg

Smallest distance from peaks to all points 3 dB below = 9.0 mm

Ratio of SAR at M2 to SAR at M1 = 80.6 %

