

### 01\_LTE Band 12\_10M\_QPSK\_1RB\_25Offset\_Left Cheek\_Ch23095

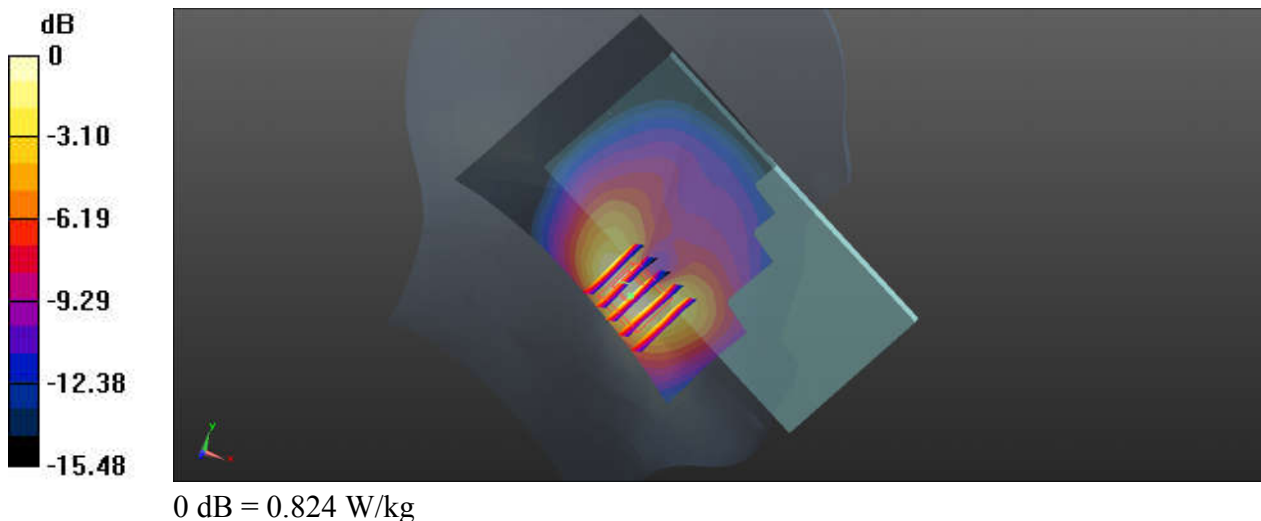
Communication System: UID 0, LTE (0); Frequency: 707.5 MHz; Duty Cycle: 1:1  
Medium: HSL\_750\_231116 Medium parameters used:  $f = 707.5$  MHz;  $\sigma = 0.862$  S/m;  $\epsilon_r = 41.72$ ;  $\rho = 1000$  kg/m<sup>3</sup>  
Ambient Temperature : 23.2 °C; Liquid Temperature : 22.6 °C

#### DASY5 Configuration:

- Probe: EX3DV4 - SN7576; ConvF(10.53, 10.53, 10.53); Calibrated: 2023/8/23
- Sensor-Surface: 1.4mm (Mechanical Surface Detection)
- Electronics: DAE4 Sn1386; Calibrated: 2023/7/17
- Phantom: SAM with CRP v5.0(Front); Type: QD000P40CD; Serial: 1671
- Measurement SW: DASY52, Version 52.10 (3); SEMCAD X Version 14.6.13 (7474)

**Ch23095/Area Scan (71x91x1):** Interpolated grid: dx=1.500 mm, dy=1.500 mm  
Maximum value of SAR (interpolated) = 0.879 W/kg

**Ch23095/Zoom Scan (5x5x7)/Cube 0:** Measurement grid: dx=8mm, dy=8mm, dz=5mm  
Reference Value = 5.946 V/m; Power Drift = -0.07 dB  
Peak SAR (extrapolated) = 1.21 W/kg  
**SAR(1 g) = 0.579 W/kg; SAR(10 g) = 0.313 W/kg**  
Maximum value of SAR (measured) = 0.824 W/kg



## 02\_LTE Band 13\_10M\_QPSK\_1RB\_25Offset\_Left Cheek\_Ch23230

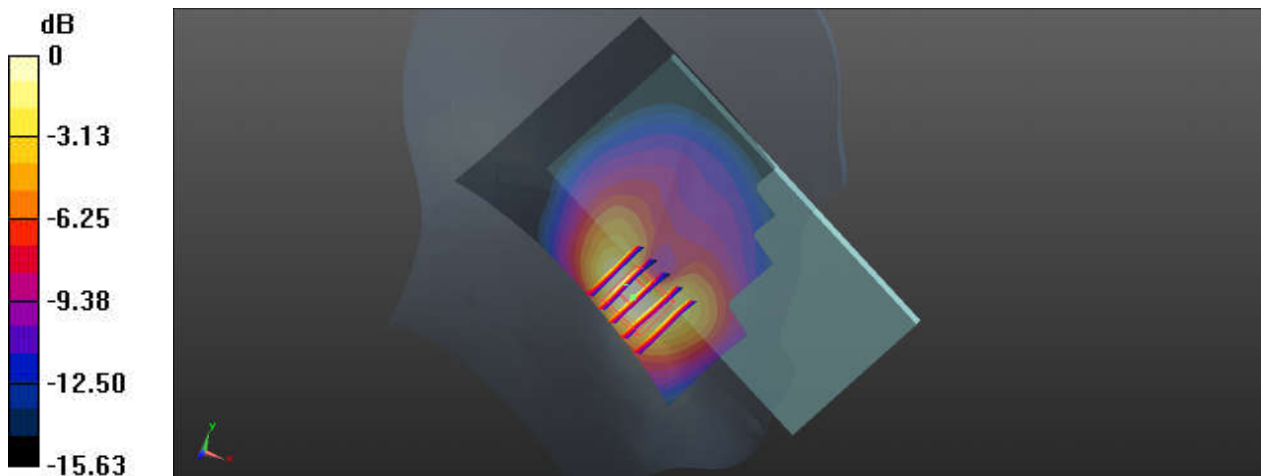
Communication System: UID 0, LTE (0); Frequency: 782 MHz; Duty Cycle: 1:1  
Medium: HSL\_750\_231116 Medium parameters used:  $f = 782 \text{ MHz}$ ;  $\sigma = 0.903 \text{ S/m}$ ;  $\epsilon_r = 40.034$ ;  $\rho = 1000 \text{ kg/m}^3$   
Ambient Temperature :  $23.2 \text{ }^\circ\text{C}$ ; Liquid Temperature :  $22.6 \text{ }^\circ\text{C}$

### DASY5 Configuration:

- Probe: EX3DV4 - SN7576; ConvF(10.53, 10.53, 10.53); Calibrated: 2023/8/23
- Sensor-Surface: 1.4mm (Mechanical Surface Detection)
- Electronics: DAE4 Sn1386; Calibrated: 2023/7/17
- Phantom: SAM with CRP v5.0(Front); Type: QD000P40CD; Serial: 1671
- Measurement SW: DASY52, Version 52.10 (3); SEMCAD X Version 14.6.13 (7474)

**Ch23230/Area Scan (71x91x1):** Interpolated grid:  $dx=1.500 \text{ mm}$ ,  $dy=1.500 \text{ mm}$   
Maximum value of SAR (interpolated) =  $1.25 \text{ W/kg}$

**Ch23230/Zoom Scan (5x5x7)/Cube 0:** Measurement grid:  $dx=8\text{mm}$ ,  $dy=8\text{mm}$ ,  $dz=5\text{mm}$   
Reference Value =  $6.612 \text{ V/m}$ ; Power Drift =  $-0.15 \text{ dB}$   
Peak SAR (extrapolated) =  $1.67 \text{ W/kg}$   
**SAR(1 g) =  $0.811 \text{ W/kg}$ ; SAR(10 g) =  $0.439 \text{ W/kg}$**   
Maximum value of SAR (measured) =  $1.13 \text{ W/kg}$



0 dB =  $1.13 \text{ W/kg}$

### 03\_GSM850\_GPRS (4 Tx slots)\_Left Cheek\_Ch128

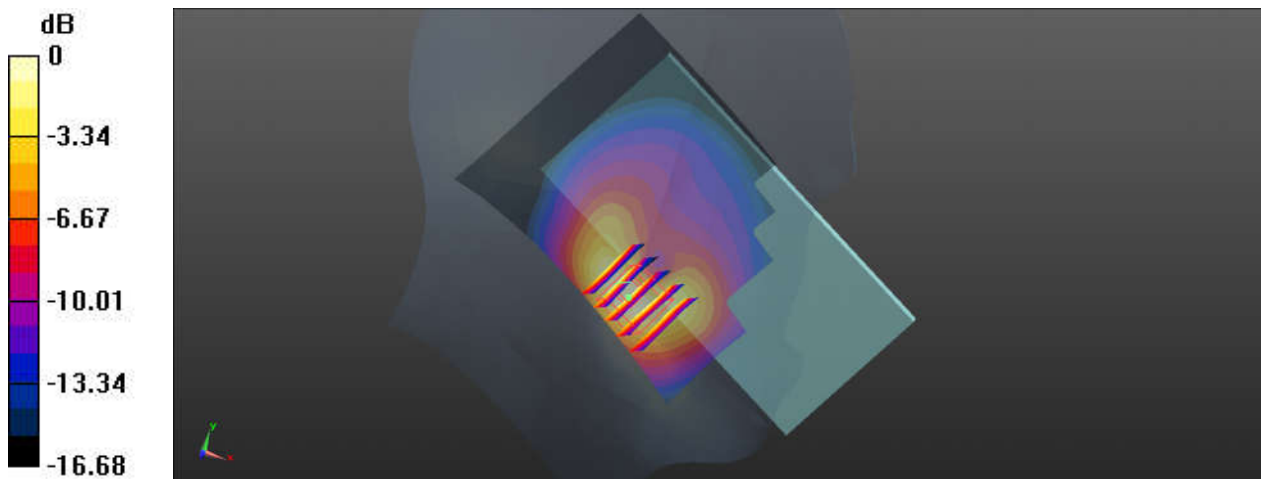
Communication System: UID 0, GPRS/EDGE12 (0); Frequency: 824.2 MHz; Duty Cycle: 1:2.08  
Medium: HSL\_835\_231119 Medium parameters used:  $f = 824.2$  MHz;  $\sigma = 0.905$  S/m;  $\epsilon_r = 41.928$ ;  
 $\rho = 1000$  kg/m<sup>3</sup>  
Ambient Temperature : 23.7 °C; Liquid Temperature : 22.4 °C

#### DASY5 Configuration:

- Probe: EX3DV4 - SN7576; ConvF(10.32, 10.32, 10.32); Calibrated: 2023/8/23
- Sensor-Surface: 1.4mm (Mechanical Surface Detection)
- Electronics: DAE4 Sn1386; Calibrated: 2023/7/17
- Phantom: SAM with CRP v5.0(Front); Type: QD000P40CD; Serial: 1671
- Measurement SW: DASY52, Version 52.10 (3); SEMCAD X Version 14.6.13 (7474)

**Ch128/Area Scan (71x91x1):** Interpolated grid: dx=1.500 mm, dy=1.500 mm  
Maximum value of SAR (interpolated) = 1.18 W/kg

**Ch128/Zoom Scan (5x5x7)/Cube 0:** Measurement grid: dx=8mm, dy=8mm, dz=5mm  
Reference Value = 0.8540 V/m; Power Drift = -0.06 dB  
Peak SAR (extrapolated) = 1.56 W/kg  
**SAR(1 g) = 0.755 W/kg; SAR(10 g) = 0.409 W/kg**  
Maximum value of SAR (measured) = 1.11 W/kg



0 dB = 1.11 W/kg

### 04\_WCDMA V\_RMC 12.2Kbps\_Left Cheek\_Ch4182

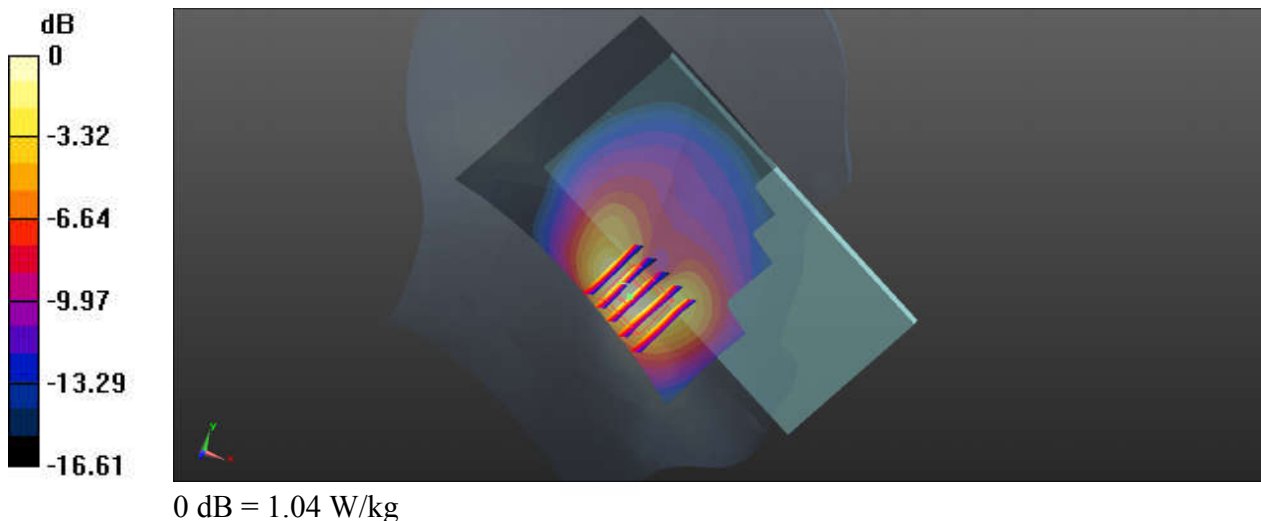
Communication System: UID 0, UMTS (0); Frequency: 836.4 MHz; Duty Cycle: 1:1  
Medium: HSL\_835\_231119 Medium parameters used:  $f = 836.5$  MHz;  $\sigma = 0.915$  S/m;  $\epsilon_r = 41.816$ ;  
 $\rho = 1000$  kg/m<sup>3</sup>  
Ambient Temperature : 23.7 °C; Liquid Temperature : 22.4 °C

#### DASY5 Configuration:

- Probe: EX3DV4 - SN7576; ConvF(10.32, 10.32, 10.32); Calibrated: 2023/8/23
- Sensor-Surface: 1.4mm (Mechanical Surface Detection)
- Electronics: DAE4 Sn1386; Calibrated: 2023/7/17
- Phantom: SAM with CRP v5.0(Front); Type: QD000P40CD; Serial: 1671
- Measurement SW: DASY52, Version 52.10 (3); SEMCAD X Version 14.6.13 (7474)

**Ch4182/Area Scan (71x91x1):** Interpolated grid: dx=1.500 mm, dy=1.500 mm  
Maximum value of SAR (interpolated) = 1.12 W/kg

**Ch4182/Zoom Scan (5x5x7)/Cube 0:** Measurement grid: dx=8mm, dy=8mm, dz=5mm  
Reference Value = 0.8820 V/m; Power Drift = -0.14 dB  
Peak SAR (extrapolated) = 1.47 W/kg  
**SAR(1 g) = 0.706 W/kg; SAR(10 g) = 0.378 W/kg**  
Maximum value of SAR (measured) = 1.04 W/kg



### 05\_LTE Band 26\_15M\_QPSK\_1RB\_37Offset\_Left Cheek\_Ch26865

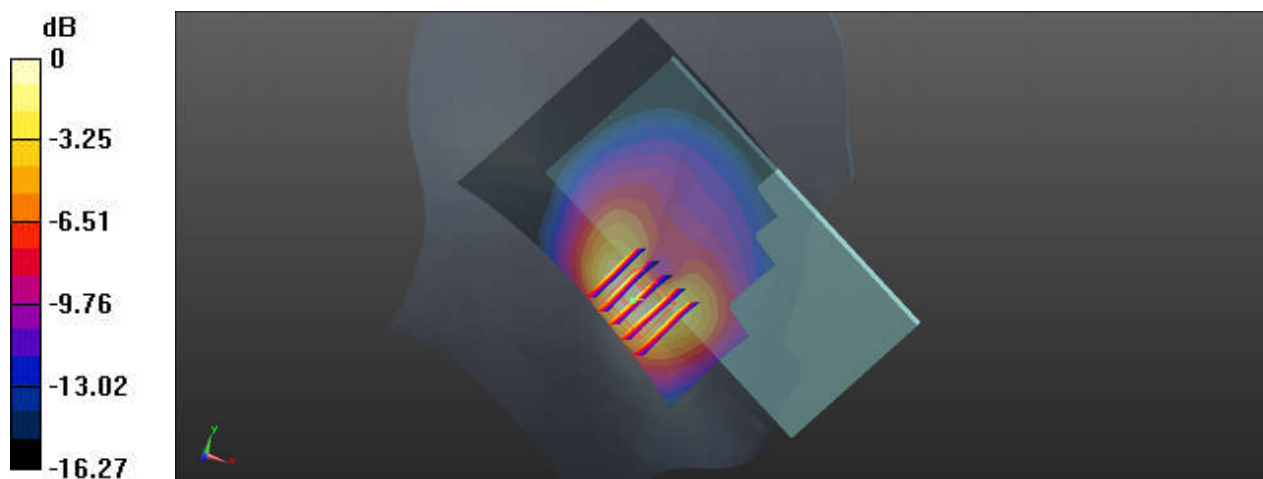
Communication System: UID 0, LTE (0); Frequency: 831.5 MHz; Duty Cycle: 1:1  
Medium: HSL\_835\_231119 Medium parameters used:  $f = 831.5$  MHz;  $\sigma = 0.911$  S/m;  $\epsilon_r = 41.858$ ;  
 $\rho = 1000$  kg/m<sup>3</sup>  
Ambient Temperature : 23.7 °C; Liquid Temperature : 22.4 °C

#### DASY5 Configuration:

- Probe: EX3DV4 - SN7576; ConvF(10.32, 10.32, 10.32); Calibrated: 2023/8/23
- Sensor-Surface: 1.4mm (Mechanical Surface Detection)
- Electronics: DAE4 Sn1386; Calibrated: 2023/7/17
- Phantom: SAM with CRP v5.0(Front); Type: QD000P40CD; Serial: 1671
- Measurement SW: DASY52, Version 52.10 (3); SEMCAD X Version 14.6.13 (7474)

**Ch26865/Area Scan (71x91x1):** Interpolated grid: dx=1.500 mm, dy=1.500 mm  
Maximum value of SAR (interpolated) = 0.824 W/kg

**Ch26865/Zoom Scan (5x5x7)/Cube 0:** Measurement grid: dx=8mm, dy=8mm, dz=5mm  
Reference Value = 4.795 V/m; Power Drift = 0.04 dB  
Peak SAR (extrapolated) = 1.11 W/kg  
**SAR(1 g) = 0.524 W/kg; SAR(10 g) = 0.280 W/kg**  
Maximum value of SAR (measured) = 0.748 W/kg



0 dB = 0.748 W/kg

**06\_FR1 n26\_20M\_QPSK\_50RB\_28Offset\_DFT-15\_Left Cheek\_Ch166300**

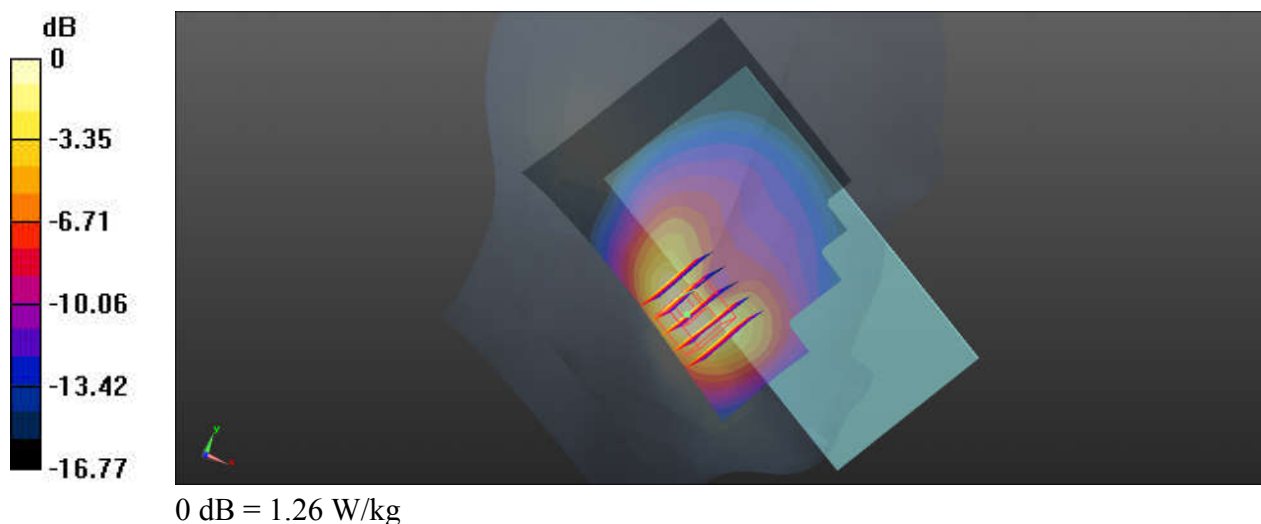
Communication System: UID 0, 5G NR (0); Frequency: 831.5 MHz; Duty Cycle: 1:1  
Medium: HSL\_835\_231119 Medium parameters used:  $f = 831.5$  MHz;  $\sigma = 0.911$  S/m;  $\epsilon_r = 41.858$ ;  
 $\rho = 1000$  kg/m<sup>3</sup>  
Ambient Temperature : 23.7 °C; Liquid Temperature : 22.4 °C

**DASY5 Configuration:**

- Probe: EX3DV4 - SN7576; ConvF(10.32, 10.32, 10.32); Calibrated: 2023/8/23
- Sensor-Surface: 1.4mm (Mechanical Surface Detection)
- Electronics: DAE4 Sn1386; Calibrated: 2023/7/17
- Phantom: SAM with CRP v5.0(Front); Type: QD000P40CD; Serial: 1671
- Measurement SW: DASY52, Version 52.10 (3); SEMCAD X Version 14.6.13 (7474)

**Ch166300/Area Scan (71x91x1):** Interpolated grid: dx=1.500 mm, dy=1.500 mm  
Maximum value of SAR (interpolated) = 1.35 W/kg

**Ch166300/Zoom Scan (5x5x7)/Cube 0:** Measurement grid: dx=8mm, dy=8mm, dz=5mm  
Reference Value = 1.031 V/m; Power Drift = 0.09 dB  
Peak SAR (extrapolated) = 1.65 W/kg  
**SAR(1 g) = 0.818 W/kg; SAR(10 g) = 0.440 W/kg**  
Maximum value of SAR (measured) = 1.26 W/kg



## 07\_WCDMA IV\_RMC 12.2Kbps\_Right Cheek\_Ch1312

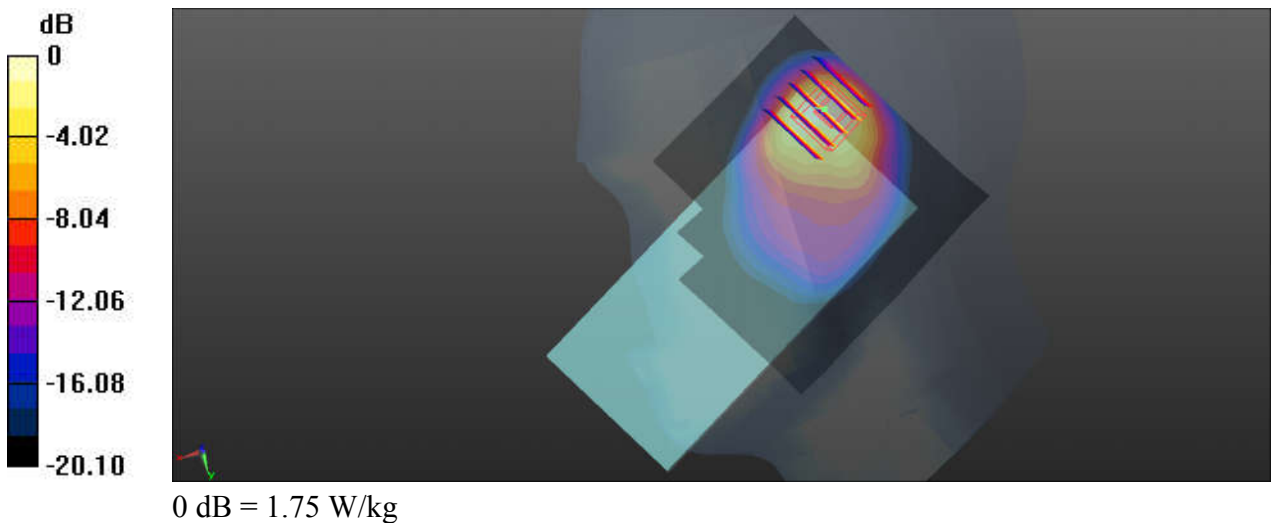
Communication System: UID 0, UMTS (0); Frequency: 1712.4 MHz; Duty Cycle: 1:1  
Medium: HSL\_1750\_231114 Medium parameters used:  $f = 1712.4$  MHz;  $\sigma = 1.334$  S/m;  $\epsilon_r = 38.643$ ;  $\rho = 1000$  kg/m<sup>3</sup>  
Ambient Temperature : 23.7 °C; Liquid Temperature : 22.5 °C

### DASY5 Configuration:

- Probe: EX3DV4 - SN7576; ConvF(9.07, 9.07, 9.07); Calibrated: 2023/8/23
- Sensor-Surface: 1.4mm (Mechanical Surface Detection)
- Electronics: DAE4 Sn1386; Calibrated: 2023/7/17
- Phantom: SAM with CRP v5.0(Front); Type: QD000P40CD; Serial: 1671
- Measurement SW: DASY52, Version 52.10 (3); SEMCAD X Version 14.6.13 (7474)

**Ch1312/Area Scan (81x81x1):** Interpolated grid: dx=1.500 mm, dy=1.500 mm  
Maximum value of SAR (interpolated) = 1.87 W/kg

**Ch1312/Zoom Scan (5x5x7)/Cube 0:** Measurement grid: dx=8mm, dy=8mm, dz=5mm  
Reference Value = 21.82 V/m; Power Drift = -0.04 dB  
Peak SAR (extrapolated) = 2.27 W/kg  
**SAR(1 g) = 1.01 W/kg; SAR(10 g) = 0.505 W/kg**  
Maximum value of SAR (measured) = 1.75 W/kg



### 08\_LTE Band 66\_20M\_QPSK\_1RB\_49Offset\_Right Cheek\_Ch132072

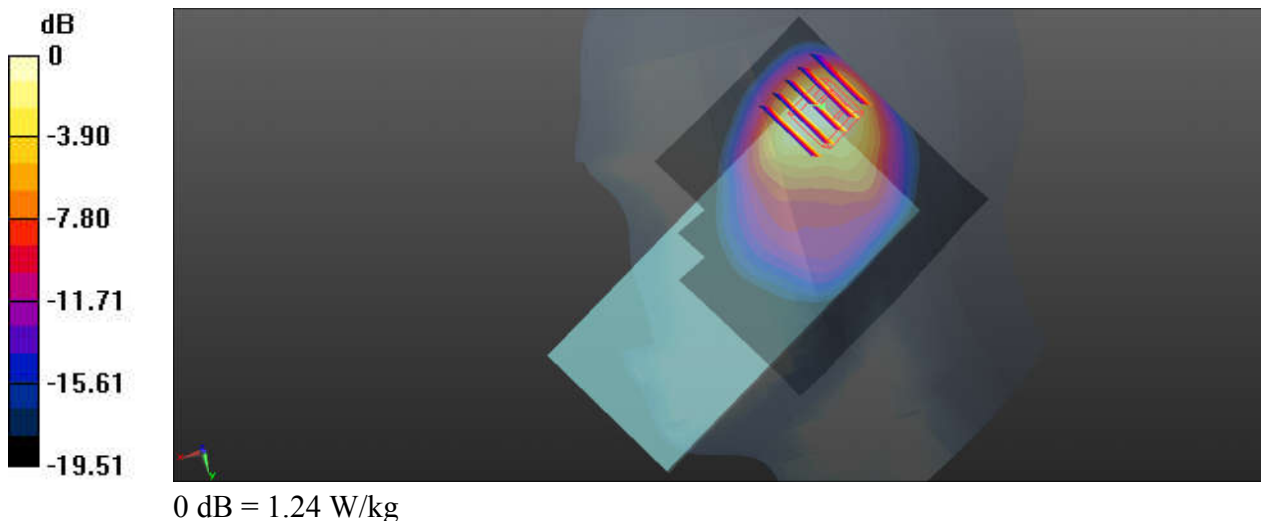
Communication System: UID 0, LTE (0); Frequency: 1720 MHz; Duty Cycle: 1:1  
Medium: HSL\_1750\_231114 Medium parameters used:  $f = 1720$  MHz;  $\sigma = 1.338$  S/m;  $\epsilon_r = 38.638$ ;  
 $\rho = 1000$  kg/m<sup>3</sup>  
Ambient Temperature : 23.7 °C ; Liquid Temperature : 22.5 °C

#### DASY5 Configuration:

- Probe: EX3DV4 - SN7576; ConvF(9.07, 9.07, 9.07); Calibrated: 2023/8/23
- Sensor-Surface: 1.4mm (Mechanical Surface Detection)
- Electronics: DAE4 Sn1386; Calibrated: 2023/7/17
- Phantom: SAM with CRP v5.0(Front); Type: QD000P40CD; Serial: 1671
- Measurement SW: DASY52, Version 52.10 (3); SEMCAD X Version 14.6.13 (7474)

**Ch132072/Area Scan (81x81x1):** Interpolated grid: dx=1.500 mm, dy=1.500 mm  
Maximum value of SAR (interpolated) = 1.74 W/kg

**Ch132072/Zoom Scan (5x5x7)/Cube 0:** Measurement grid: dx=8mm, dy=8mm, dz=5mm  
Reference Value = 18.81 V/m; Power Drift = 0.13 dB  
Peak SAR (extrapolated) = 1.64 W/kg  
**SAR(1 g) = 0.785 W/kg; SAR(10 g) = 0.418 W/kg**  
Maximum value of SAR (measured) = 1.24 W/kg





### 09\_FR1 n66\_40M\_QPSK\_108RB\_54Offset\_DFT-15\_Right Cheek\_Ch349000

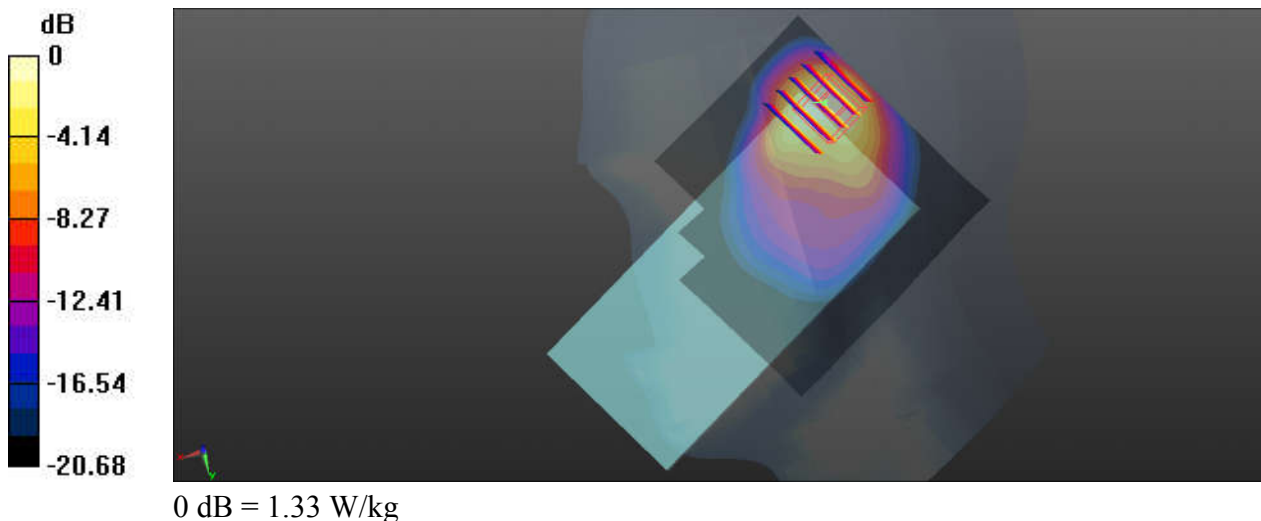
Communication System: UID 0, 5G NR (0); Frequency: 1745 MHz; Duty Cycle: 1:1  
Medium: HSL\_1750\_231114 Medium parameters used:  $f = 1745$  MHz;  $\sigma = 1.352$  S/m;  $\epsilon_r = 38.635$ ;  
 $\rho = 1000$  kg/m<sup>3</sup>  
Ambient Temperature : 23.7 °C ; Liquid Temperature : 22.5 °C

#### DASY5 Configuration:

- Probe: EX3DV4 - SN7576; ConvF(9.07, 9.07, 9.07); Calibrated: 2023/8/23
- Sensor-Surface: 1.4mm (Mechanical Surface Detection)
- Electronics: DAE4 Sn1386; Calibrated: 2023/7/17
- Phantom: SAM with CRP v5.0(Front); Type: QD000P40CD; Serial: 1671
- Measurement SW: DASY52, Version 52.10 (3); SEMCAD X Version 14.6.13 (7474)

**Ch349000/Area Scan (81x81x1):** Interpolated grid: dx=1.500 mm, dy=1.500 mm  
Maximum value of SAR (interpolated) = 1.66 W/kg

**Ch349000/Zoom Scan (5x5x7)/Cube 0:** Measurement grid: dx=8mm, dy=8mm, dz=5mm  
Reference Value = 17.68 V/m; Power Drift = 0.14 dB  
Peak SAR (extrapolated) = 1.71 W/kg  
**SAR(1 g) = 0.764 W/kg; SAR(10 g) = 0.380 W/kg**  
Maximum value of SAR (measured) = 1.33 W/kg



## 10\_GSM1900\_GPRS (4 Tx slots)\_Right Cheek\_Ch810

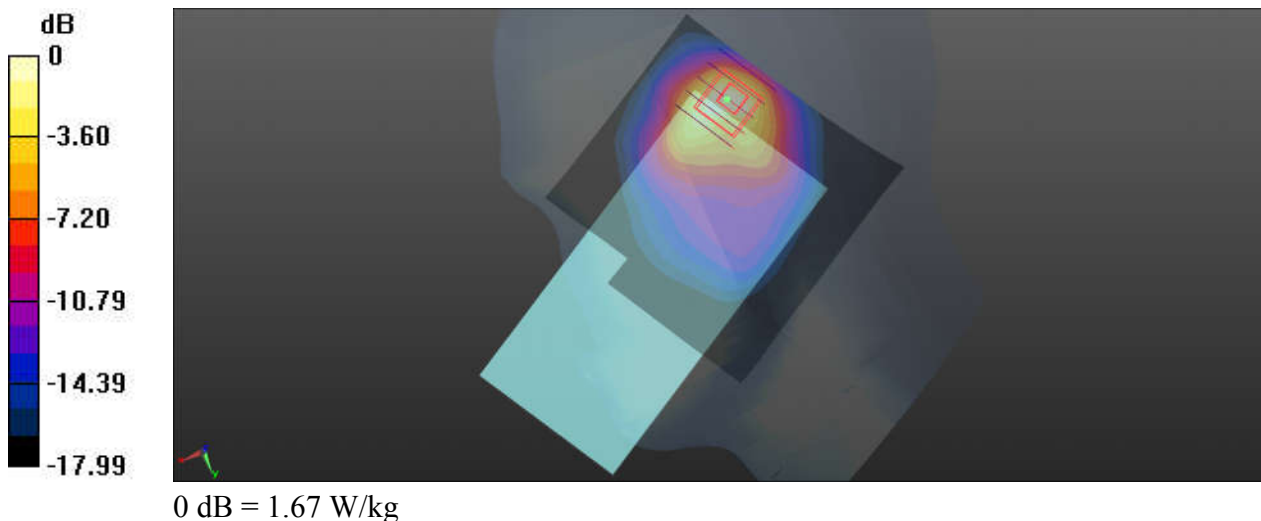
Communication System: UID 0, GPRS/EDGE12 (0); Frequency: 1909.8 MHz; Duty Cycle: 1:2.08  
Medium: HSL\_1900\_231116 Medium parameters used:  $f = 1910$  MHz;  $\sigma = 1.459$  S/m;  $\epsilon_r = 39.967$ ;  
 $\rho = 1000$  kg/m<sup>3</sup>  
Ambient Temperature : 23.2 °C; Liquid Temperature : 22.5 °C

### DASY5 Configuration:

- Probe: EX3DV4 - SN7576; ConvF(8.69, 8.69, 8.69); Calibrated: 2023/8/23
- Sensor-Surface: 1.4mm (Mechanical Surface Detection)
- Electronics: DAE4 Sn1386; Calibrated: 2023/7/17
- Phantom: SAM with CRP v5.0(Front); Type: QD000P40CD; Serial: 1671
- Measurement SW: DASY52, Version 52.10 (3); SEMCAD X Version 14.6.13 (7474)

**Ch810/Area Scan (81x81x1):** Interpolated grid: dx=1.500 mm, dy=1.500 mm  
Maximum value of SAR (interpolated) = 1.68 W/kg

**Ch810/Zoom Scan (5x5x7)/Cube 0:** Measurement grid: dx=8mm, dy=8mm, dz=5mm  
Reference Value = 22.81 V/m; Power Drift = 0.18 dB  
Peak SAR (extrapolated) = 2.05 W/kg  
**SAR(1 g) = 0.933 W/kg; SAR(10 g) = 0.454 W/kg**  
Maximum value of SAR (measured) = 1.67 W/kg



## 11\_WCDMA II\_RMC 12.2Kbps\_Right Cheek\_Ch9400

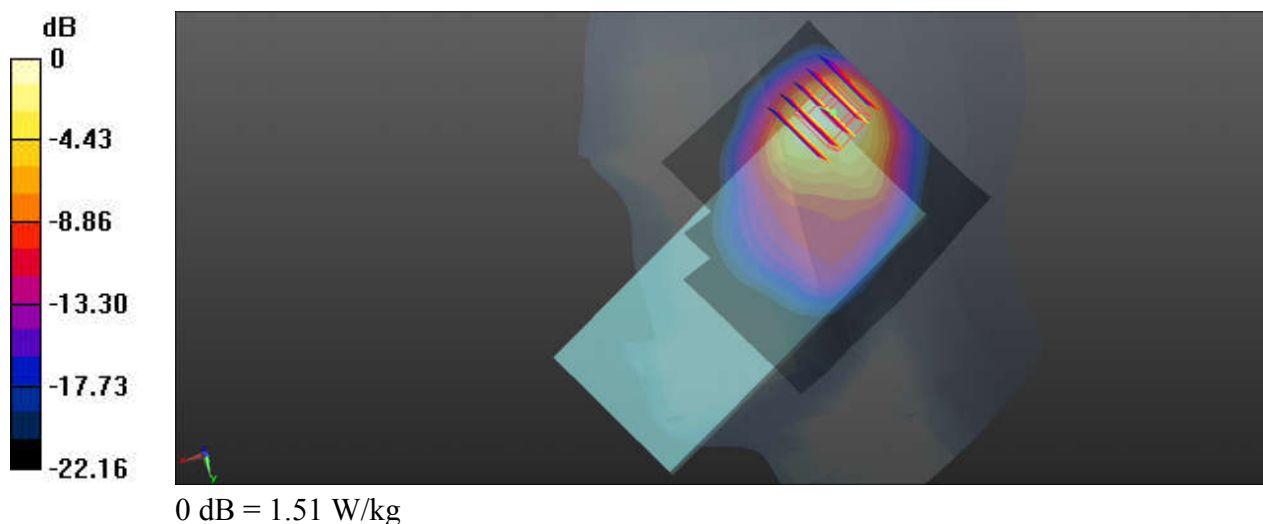
Communication System: UID 0, UMTS (0); Frequency: 1880 MHz; Duty Cycle: 1:1  
 Medium: HSL\_1900\_231116 Medium parameters used:  $f = 1880 \text{ MHz}$ ;  $\sigma = 1.429 \text{ S/m}$ ;  $\epsilon_r = 40.102$ ;  
 $\rho = 1000 \text{ kg/m}^3$   
 Ambient Temperature :  $23.2 \text{ }^\circ\text{C}$ ; Liquid Temperature :  $22.5 \text{ }^\circ\text{C}$

### DASY5 Configuration:

- Probe: EX3DV4 - SN7576; ConvF(8.69, 8.69, 8.69); Calibrated: 2023/8/23
- Sensor-Surface: 1.4mm (Mechanical Surface Detection)
- Electronics: DAE4 Sn1386; Calibrated: 2023/7/17
- Phantom: SAM with CRP v5.0(Front); Type: QD000P40CD; Serial: 1671
- Measurement SW: DASY52, Version 52.10 (3); SEMCAD X Version 14.6.13 (7474)

**Ch9400/Area Scan (81x81x1):** Interpolated grid:  $dx=1.500 \text{ mm}$ ,  $dy=1.500 \text{ mm}$   
 Maximum value of SAR (interpolated) =  $1.84 \text{ W/kg}$

**Ch9400/Zoom Scan (5x5x7)/Cube 0:** Measurement grid:  $dx=8\text{mm}$ ,  $dy=8\text{mm}$ ,  $dz=5\text{mm}$   
 Reference Value =  $19.49 \text{ V/m}$ ; Power Drift =  $0.07 \text{ dB}$   
 Peak SAR (extrapolated) =  $1.99 \text{ W/kg}$   
**SAR(1 g) =  $0.908 \text{ W/kg}$ ; SAR(10 g) =  $0.446 \text{ W/kg}$**   
 Maximum value of SAR (measured) =  $1.51 \text{ W/kg}$



## 12\_LTE Band 2\_20M\_QPSK\_1RB\_49Offset\_Right Cheek\_Ch19100

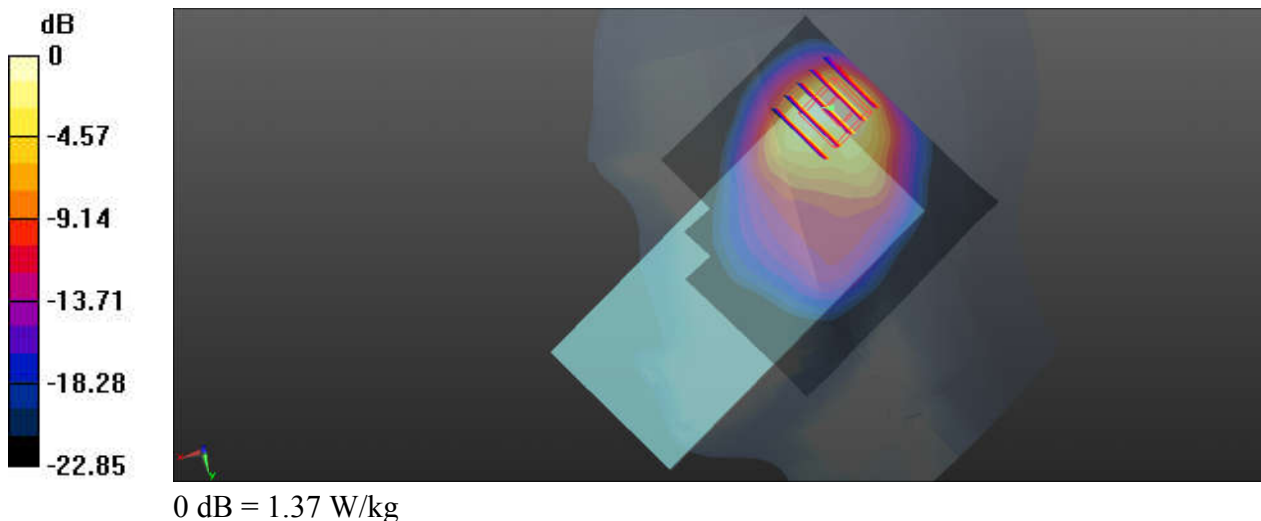
Communication System: UID 0, LTE (0); Frequency: 1900 MHz; Duty Cycle: 1:1  
Medium: HSL\_1900\_231116 Medium parameters used:  $f = 1900$  MHz;  $\sigma = 1.449$  S/m;  $\epsilon_r = 40.009$ ;  
 $\rho = 1000$  kg/m<sup>3</sup>  
Ambient Temperature : 23.2 °C; Liquid Temperature : 22.5 °C

### DASY5 Configuration:

- Probe: EX3DV4 - SN7576; ConvF(8.69, 8.69, 8.69); Calibrated: 2023/8/23
- Sensor-Surface: 1.4mm (Mechanical Surface Detection)
- Electronics: DAE4 Sn1386; Calibrated: 2023/7/17
- Phantom: SAM with CRP v5.0(Front); Type: QD000P40CD; Serial: 1671
- Measurement SW: DASY52, Version 52.10 (3); SEMCAD X Version 14.6.13 (7474)

**Ch19100/Area Scan (81x81x1):** Interpolated grid: dx=1.500 mm, dy=1.500 mm  
Maximum value of SAR (interpolated) = 1.48 W/kg

**Ch19100/Zoom Scan (5x5x7)/Cube 0:** Measurement grid: dx=8mm, dy=8mm, dz=5mm  
Reference Value = 18.15 V/m; Power Drift = 0.19 dB  
Peak SAR (extrapolated) = 1.79 W/kg  
**SAR(1 g) = 0.800 W/kg; SAR(10 g) = 0.383 W/kg**  
Maximum value of SAR (measured) = 1.37 W/kg



### 13\_FR1 n2\_20M\_QPSK\_1RB\_53Offset\_DFT-15\_Right Cheek\_Ch376000

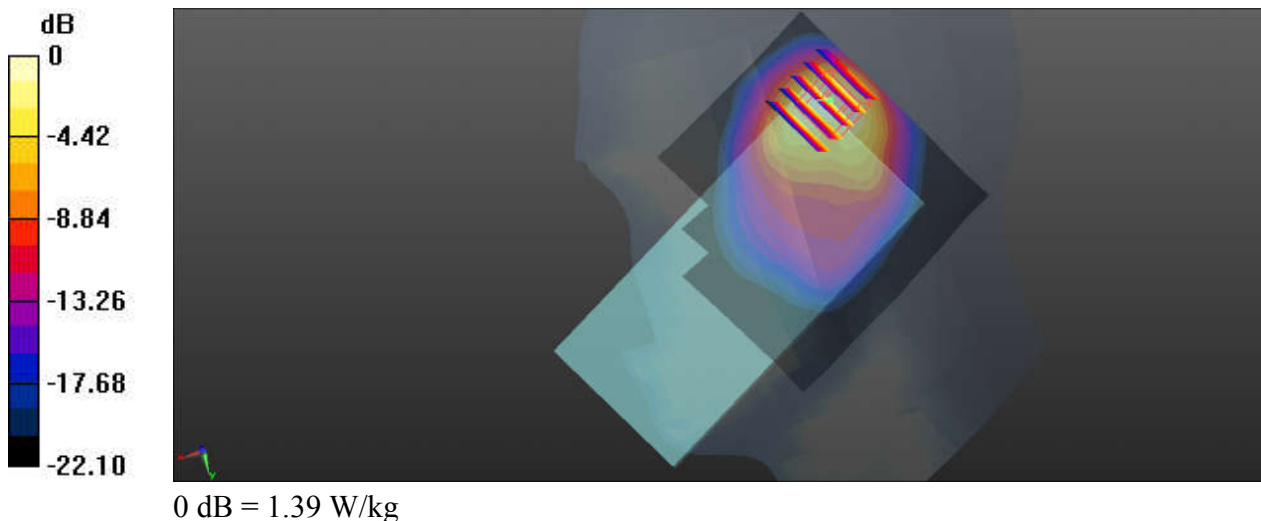
Communication System: UID 0, 5G NR (0); Frequency: 1880 MHz; Duty Cycle: 1:1  
Medium: HSL\_1900\_231116 Medium parameters used:  $f = 1880$  MHz;  $\sigma = 1.429$  S/m;  $\epsilon_r = 40.102$ ;  
 $\rho = 1000$  kg/m<sup>3</sup>  
Ambient Temperature : 23.2 °C; Liquid Temperature : 22.5 °C

#### DASY5 Configuration:

- Probe: EX3DV4 - SN7576; ConvF(8.69, 8.69, 8.69); Calibrated: 2023/8/23
- Sensor-Surface: 1.4mm (Mechanical Surface Detection)
- Electronics: DAE4 Sn1386; Calibrated: 2023/7/17
- Phantom: SAM with CRP v5.0(Front); Type: QD000P40CD; Serial: 1671
- Measurement SW: DASY52, Version 52.10 (3); SEMCAD X Version 14.6.13 (7474)

**Ch376000/Area Scan (81x81x1):** Interpolated grid: dx=1.500 mm, dy=1.500 mm  
Maximum value of SAR (interpolated) = 1.65 W/kg

**Ch376000/Zoom Scan (5x5x7)/Cube 0:** Measurement grid: dx=8mm, dy=8mm, dz=5mm  
Reference Value = 18.69 V/m; Power Drift = 0.02 dB  
Peak SAR (extrapolated) = 1.82 W/kg  
**SAR(1 g) = 0.818 W/kg; SAR(10 g) = 0.396 W/kg**  
Maximum value of SAR (measured) = 1.39 W/kg



**14\_LTE Band 7\_20M\_QPSK\_1RB\_49Offset\_Right Tilted\_Ch21100**

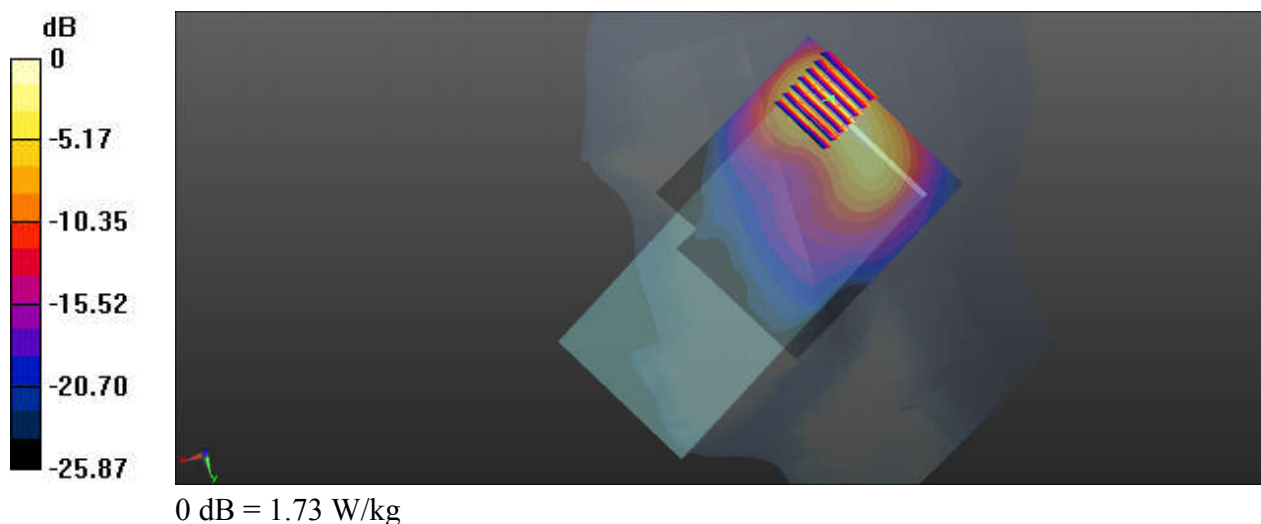
Communication System: UID 0, LTE (0); Frequency: 2535 MHz; Duty Cycle: 1:1  
Medium: HSL\_2600\_231114 Medium parameters used:  $f = 2535$  MHz;  $\sigma = 1.981$  S/m;  $\epsilon_r = 37.862$ ;  
 $\rho = 1000$  kg/m<sup>3</sup>  
Ambient Temperature : 23.4 °C; Liquid Temperature : 22.4 °C

**DASY5 Configuration:**

- Probe: EX3DV4 - SN7576; ConvF(7.89, 7.89, 7.89); Calibrated: 2023/8/23
- Sensor-Surface: 1.4mm (Mechanical Surface Detection)
- Electronics: DAE4 Sn1386; Calibrated: 2023/7/17
- Phantom: SAM with CRP v5.0(Front); Type: QD000P40CD; Serial: 1671
- Measurement SW: DASY52, Version 52.10 (3); SEMCAD X Version 14.6.13 (7474)

**Ch21100/Area Scan (81x91x1):** Interpolated grid: dx=1.200 mm, dy=1.200 mm  
Maximum value of SAR (interpolated) = 1.90 W/kg

**Ch21100/Zoom Scan (7x7x7)/Cube 0:** Measurement grid: dx=5mm, dy=5mm, dz=5mm  
Reference Value = 20.49 V/m; Power Drift = -0.11 dB  
Peak SAR (extrapolated) = 2.44 W/kg  
**SAR(1 g) = 0.859 W/kg; SAR(10 g) = 0.350 W/kg**  
Maximum value of SAR (measured) = 1.73 W/kg



### 15\_LTE Band 38\_20M\_QPSK\_50RB\_24Offset\_Right Cheek\_Ch38000

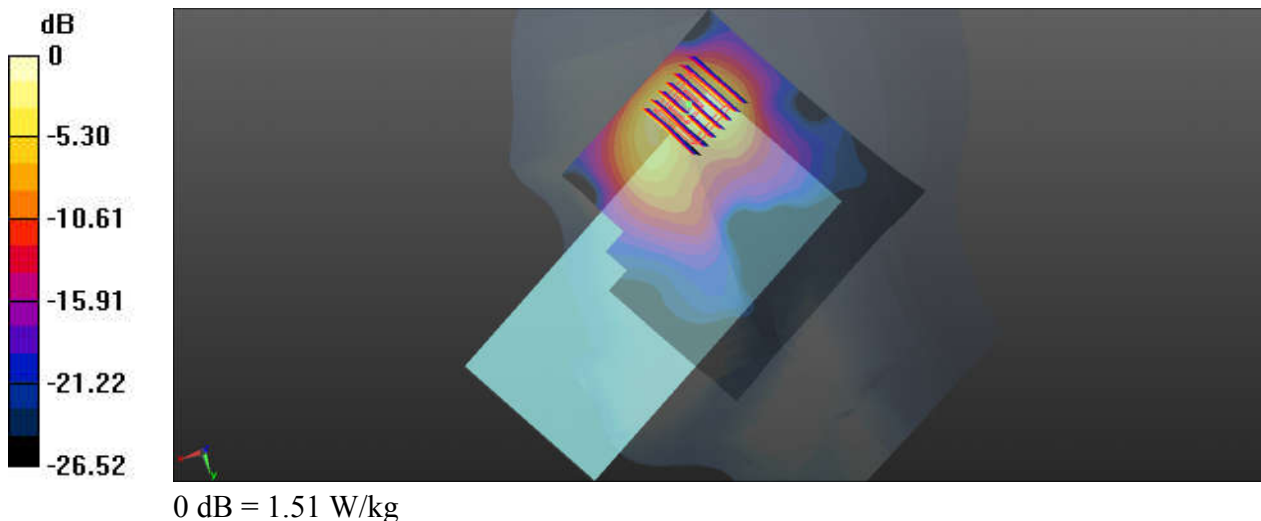
Communication System: UID 0, LTE (0); Frequency: 2595 MHz; Duty Cycle: 1:1.59  
Medium: HSL\_2600\_231114 Medium parameters used:  $f = 2595$  MHz;  $\sigma = 2.049$  S/m;  $\epsilon_r = 37.613$ ;  
 $\rho = 1000$  kg/m<sup>3</sup>  
Ambient Temperature : 23.4 °C ; Liquid Temperature : 22.4 °C

#### DASY5 Configuration:

- Probe: EX3DV4 - SN7576; ConvF(7.89, 7.89, 7.89); Calibrated: 2023/8/23
- Sensor-Surface: 1.4mm (Mechanical Surface Detection)
- Electronics: DAE4 Sn1386; Calibrated: 2023/7/17
- Phantom: SAM with CRP v5.0(Front); Type: QD000P40CD; Serial: 1671
- Measurement SW: DASY52, Version 52.10 (3); SEMCAD X Version 14.6.13 (7474)

**Ch38000/Area Scan (101x101x1):** Interpolated grid: dx=1.200 mm, dy=1.200 mm  
Maximum value of SAR (interpolated) = 1.33 W/kg

**Ch38000/Zoom Scan (7x7x7)/Cube 0:** Measurement grid: dx=5mm, dy=5mm, dz=5mm  
Reference Value = 4.998 V/m; Power Drift = 0.03 dB  
Peak SAR (extrapolated) = 2.26 W/kg  
**SAR(1 g) = 0.760 W/kg; SAR(10 g) = 0.309 W/kg**  
Maximum value of SAR (measured) = 1.51 W/kg



### 16\_LTE Band 41\_20M\_QPSK\_50RB\_24Offset\_Right Tilted\_Ch41490

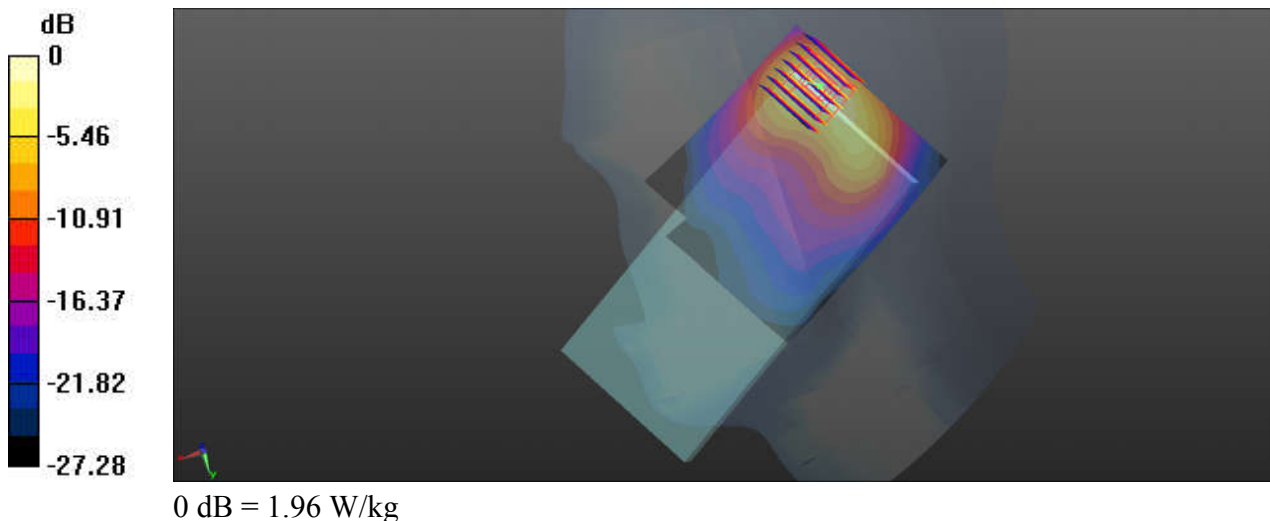
Communication System: UID 0, LTE (0); Frequency: 2680 MHz; Duty Cycle: 1:2.331  
Medium: HSL\_2600\_231114 Medium parameters used:  $f = 2680$  MHz;  $\sigma = 2.153$  S/m;  $\epsilon_r = 37.299$ ;  $\rho = 1000$  kg/m<sup>3</sup>  
Ambient Temperature : 23.4 °C; Liquid Temperature : 22.4 °C

#### DASY5 Configuration:

- Probe: EX3DV4 - SN7576; ConvF(7.89, 7.89, 7.89); Calibrated: 2023/8/23
- Sensor-Surface: 1.4mm (Mechanical Surface Detection)
- Electronics: DAE4 Sn1386; Calibrated: 2023/7/17
- Phantom: SAM with CRP v5.0(Front); Type: QD000P40CD; Serial: 1671
- Measurement SW: DASY52, Version 52.10 (3); SEMCAD X Version 14.6.13 (7474)

**Ch41490/Area Scan (81x91x1):** Interpolated grid: dx=1.200 mm, dy=1.200 mm  
Maximum value of SAR (interpolated) = 2.07 W/kg

**Ch41490Zoom Scan (7x7x7)/Cube 0:** Measurement grid: dx=5mm, dy=5mm, dz=5mm  
Reference Value = 20.22 V/m; Power Drift = -0.03 dB  
Peak SAR (extrapolated) = 2.69 W/kg  
**SAR(1 g) = 0.952 W/kg; SAR(10 g) = 0.378 W/kg**  
Maximum value of SAR (measured) = 1.96 W/kg





### 17\_FR1 n7\_40M\_QPSK\_108RB\_54Offset\_DFT-15\_Right Tilted\_Ch507000

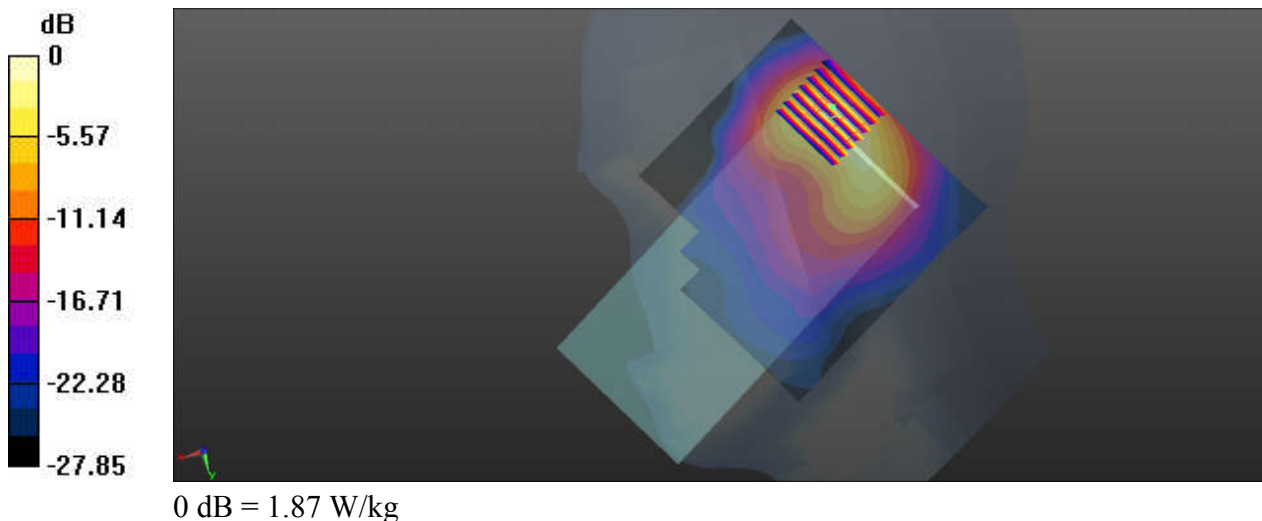
Communication System: UID 0, 5G NR (0); Frequency: 2535 MHz; Duty Cycle: 1:1  
Medium: HSL\_2600\_231114 Medium parameters used:  $f = 2535$  MHz;  $\sigma = 1.981$  S/m;  $\epsilon_r = 37.862$ ;  
 $\rho = 1000$  kg/m<sup>3</sup>  
Ambient Temperature : 23.4 °C; Liquid Temperature : 22.4 °C

#### DASY5 Configuration:

- Probe: EX3DV4 - SN7576; ConvF(7.89, 7.89, 7.89); Calibrated: 2023/8/23
- Sensor-Surface: 1.4mm (Mechanical Surface Detection)
- Electronics: DAE4 Sn1386; Calibrated: 2023/7/17
- Phantom: SAM with CRP v5.0(Front); Type: QD000P40CD; Serial: 1671
- Measurement SW: DASY52, Version 52.10 (3); SEMCAD X Version 14.6.13 (7474)

**Ch507000/Area Scan (101x101x1):** Interpolated grid: dx=1.200 mm, dy=1.200 mm  
Maximum value of SAR (interpolated) = 1.64 W/kg

**Ch507000/Zoom Scan (8x7x7)/Cube 0:** Measurement grid: dx=5mm, dy=5mm, dz=5mm  
Reference Value = 20.69 V/m; Power Drift = 0.09 dB  
Peak SAR (extrapolated) = 2.65 W/kg  
**SAR(1 g) = 0.926 W/kg; SAR(10 g) = 0.375 W/kg**  
Maximum value of SAR (measured) = 1.87 W/kg



### 18\_FR1 n38\_40M\_QPSK\_50RB\_28Offset\_DFT-30\_Right Tilted\_Ch519000

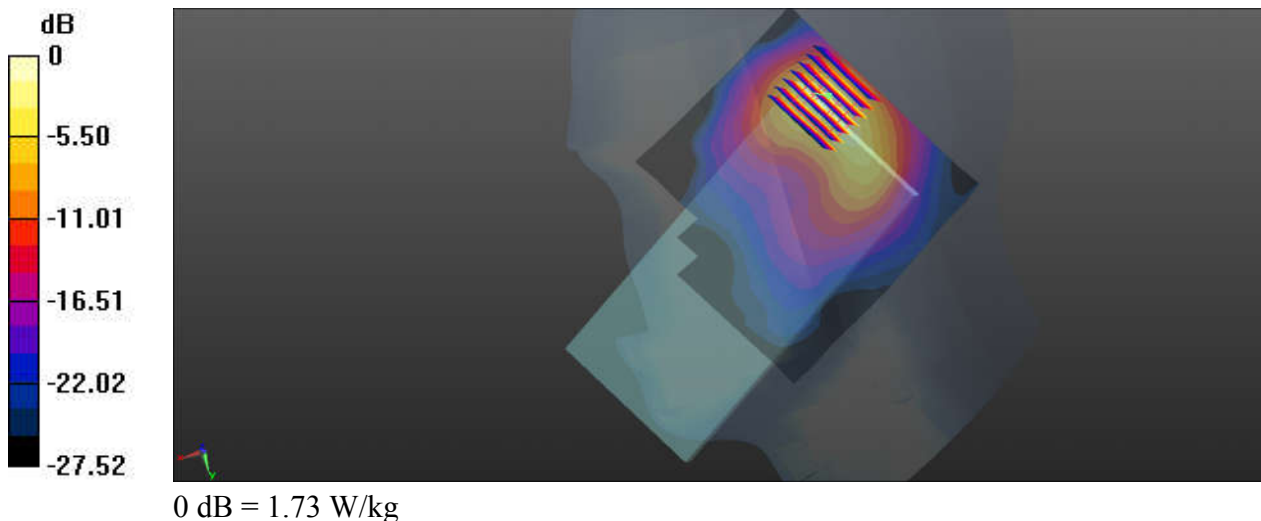
Communication System: UID 0, 5G NR (0); Frequency: 2595 MHz; Duty Cycle: 1:1  
Medium: HSL\_2600\_231114 Medium parameters used:  $f = 2595$  MHz;  $\sigma = 2.049$  S/m;  $\epsilon_r = 37.613$ ;  
 $\rho = 1000$  kg/m<sup>3</sup>  
Ambient Temperature : 23.4 °C; Liquid Temperature : 22.4 °C

#### DASY5 Configuration:

- Probe: EX3DV4 - SN7576; ConvF(7.89, 7.89, 7.89); Calibrated: 2023/8/23
- Sensor-Surface: 1.4mm (Mechanical Surface Detection)
- Electronics: DAE4 Sn1386; Calibrated: 2023/7/17
- Phantom: SAM with CRP v5.0(Front); Type: QD000P40CD; Serial: 1671
- Measurement SW: DASY52, Version 52.10 (3); SEMCAD X Version 14.6.13 (7474)

**Ch519000/Area Scan (101x101x1):** Interpolated grid: dx=1.200 mm, dy=1.200 mm  
Maximum value of SAR (interpolated) = 1.43 W/kg

**Ch519000/Zoom Scan (8x7x7)/Cube 0:** Measurement grid: dx=5mm, dy=5mm, dz=5mm  
Reference Value = 19.78 V/m; Power Drift = -0.02 dB  
Peak SAR (extrapolated) = 2.50 W/kg  
**SAR(1 g) = 0.851 W/kg; SAR(10 g) = 0.333 W/kg**  
Maximum value of SAR (measured) = 1.73 W/kg



### 19\_FR1 n41\_100M\_QPSK\_1RB\_137Offset\_DFT-30\_Right Tilted\_Ch518598

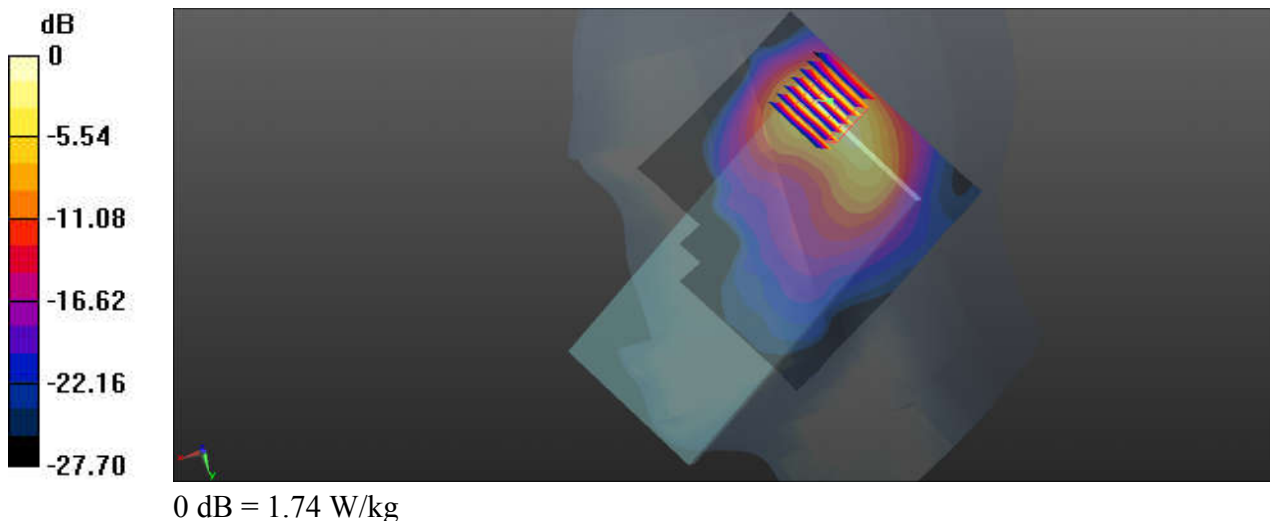
Communication System: UID 0, 5G NR (0); Frequency: 2592.99 MHz; Duty Cycle: 1:1  
Medium: HSL\_2600\_231114 Medium parameters used:  $f = 2593$  MHz;  $\sigma = 2.047$  S/m;  $\epsilon_r = 37.628$ ;  
 $\rho = 1000$  kg/m<sup>3</sup>  
Ambient Temperature : 23.4 °C; Liquid Temperature : 22.4 °C

#### DASY5 Configuration:

- Probe: EX3DV4 - SN7576; ConvF(7.89, 7.89, 7.89); Calibrated: 2023/8/23
- Sensor-Surface: 1.4mm (Mechanical Surface Detection)
- Electronics: DAE4 Sn1386; Calibrated: 2023/7/17
- Phantom: SAM with CRP v5.0(Front); Type: QD000P40CD; Serial: 1671
- Measurement SW: DASY52, Version 52.10 (3); SEMCAD X Version 14.6.13 (7474)

**Ch518598/Area Scan (101x101x1):** Interpolated grid: dx=1.200 mm, dy=1.200 mm  
Maximum value of SAR (interpolated) = 1.43 W/kg

**Ch518598/Zoom Scan (7x7x7)/Cube 0:** Measurement grid: dx=5mm, dy=5mm, dz=5mm  
Reference Value = 18.18 V/m; Power Drift = -0.07 dB  
Peak SAR (extrapolated) = 2.51 W/kg  
**SAR(1 g) = 0.854 W/kg; SAR(10 g) = 0.335 W/kg**  
Maximum value of SAR (measured) = 1.74 W/kg



## 20\_LTE Band 5\_10M\_QPSK\_1RB\_25Offset\_Left Cheek\_Ch20525

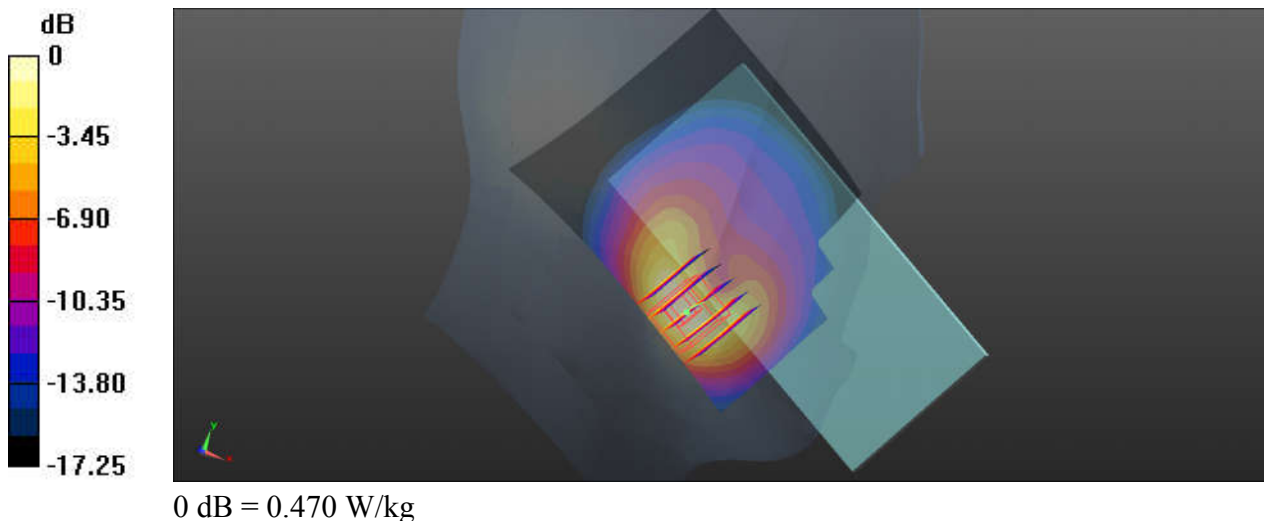
Communication System: UID 0, LTE (0); Frequency: 836.5 MHz; Duty Cycle: 1:1  
Medium: HSL\_835\_231119 Medium parameters used:  $f = 836.5$  MHz;  $\sigma = 0.915$  S/m;  $\epsilon_r = 41.816$ ;  
 $\rho = 1000$  kg/m<sup>3</sup>  
Ambient Temperature : 23.7 °C; Liquid Temperature : 22.4 °C

### DASY5 Configuration:

- Probe: EX3DV4 - SN7576; ConvF(10.32, 10.32, 10.32); Calibrated: 2023/8/23
- Sensor-Surface: 1.4mm (Mechanical Surface Detection)
- Electronics: DAE4 Sn1386; Calibrated: 2023/7/17
- Phantom: SAM with CRP v5.0(Front); Type: QD000P40CD; Serial: 1671
- Measurement SW: DASY52, Version 52.10 (3); SEMCAD X Version 14.6.13 (7474)

**Ch20525/Area Scan (71x91x1):** Interpolated grid: dx=1.500 mm, dy=1.500 mm  
Maximum value of SAR (interpolated) = 0.483 W/kg

**Ch20525/Zoom Scan (5x5x7)/Cube 0:** Measurement grid: dx=8mm, dy=8mm, dz=5mm  
Reference Value = 4.262 V/m; Power Drift = 0.13 dB  
Peak SAR (extrapolated) = 0.591 W/kg  
**SAR(1 g) = 0.299 W/kg; SAR(10 g) = 0.159 W/kg**  
Maximum value of SAR (measured) = 0.470 W/kg



## 21\_FR1 n5\_20M\_QPSK\_50RB\_28Offset\_DFT-15\_Left Cheek\_Ch167300

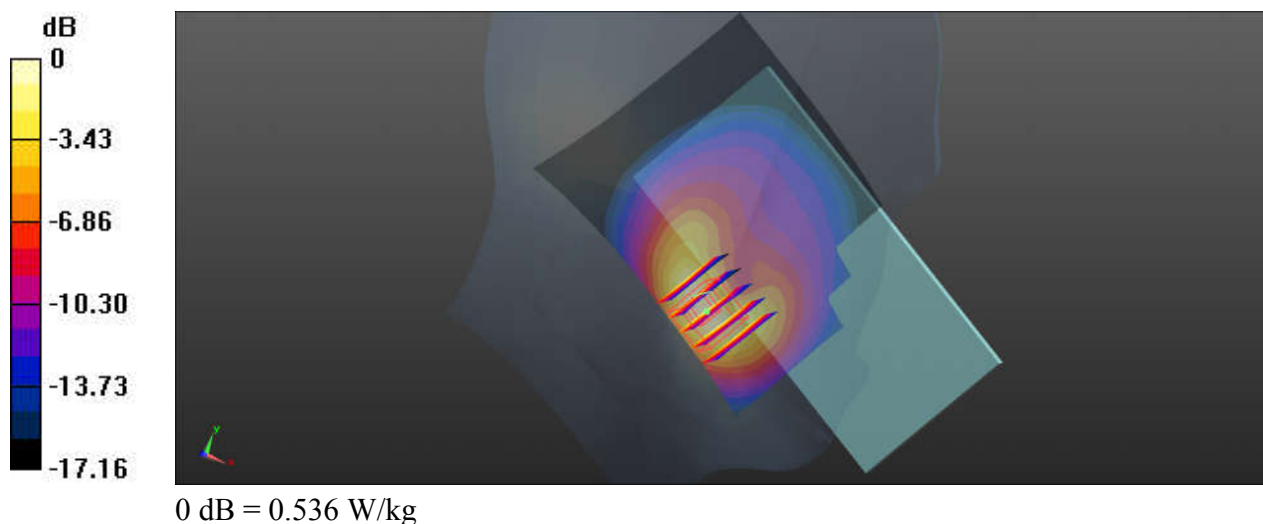
Communication System: UID 0, 5GNR (0); Frequency: 836.5 MHz; Duty Cycle: 1:1  
 Medium: HSL\_835\_231119 Medium parameters used:  $f = 836.5$  MHz;  $\sigma = 0.915$  S/m;  $\epsilon_r = 41.816$ ;  
 $\rho = 1000$  kg/m<sup>3</sup>  
 Ambient Temperature : 23.7 °C; Liquid Temperature : 22.4 °C

### DASY5 Configuration:

- Probe: EX3DV4 - SN7576; ConvF(10.32, 10.32, 10.32); Calibrated: 2023/8/23
- Sensor-Surface: 1.4mm (Mechanical Surface Detection)
- Electronics: DAE4 Sn1386; Calibrated: 2023/7/17
- Phantom: SAM with CRP v5.0(Front); Type: QD000P40CD; Serial: 1671
- Measurement SW: DASY52, Version 52.10 (3); SEMCAD X Version 14.6.13 (7474)

**Ch167300/Area Scan (71x91x1):** Interpolated grid: dx=1.500 mm, dy=1.500 mm  
 Maximum value of SAR (interpolated) = 0.543 W/kg

**Ch167300/Zoom Scan (5x5x7)/Cube 0:** Measurement grid: dx=8mm, dy=8mm, dz=5mm  
 Reference Value = 4.548 V/m; Power Drift = -0.1 dB  
 Peak SAR (extrapolated) = 0.672 W/kg  
**SAR(1 g) = 0.339 W/kg; SAR(10 g) = 0.180 W/kg**  
 Maximum value of SAR (measured) = 0.536 W/kg



## 22\_Bluetooth\_DH5 1Mbps\_Left Cheek\_Ch39

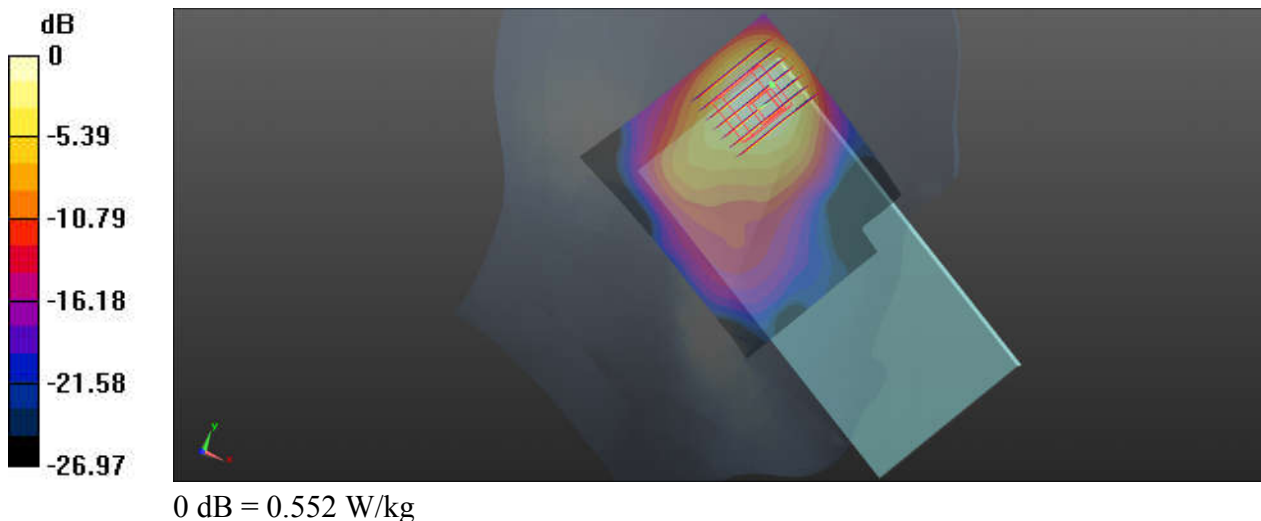
Communication System: UID 0, Bluetooth (0); Frequency: 2441 MHz; Duty Cycle: 1:1.31  
Medium: HSL\_2450\_231111 Medium parameters used:  $f = 2441$  MHz;  $\sigma = 1.741$  S/m;  $\epsilon_r = 39.795$ ;  
 $\rho = 1000$  kg/m<sup>3</sup>  
Ambient Temperature : 23.6 °C; Liquid Temperature : 22.7 °C

### DASY5 Configuration:

- Probe: EX3DV4 - SN7576; ConvF(8.13, 8.13, 8.13); Calibrated: 2023/8/23
- Sensor-Surface: 1.4mm (Mechanical Surface Detection)
- Electronics: DAE4 Sn1386; Calibrated: 2023/7/17
- Phantom: SAM with CRP v5.0(Front); Type: QD000P40CD; Serial: 1671
- Measurement SW: DASY52, Version 52.10 (3); SEMCAD X Version 14.6.13 (7474)

**Ch39/Area Scan (81x91x1):** Interpolated grid: dx=1.200 mm, dy=1.200 mm  
Maximum value of SAR (interpolated) = 0.521 W/kg

**Ch39/Zoom Scan (9x7x7)/Cube 0:** Measurement grid: dx=5mm, dy=5mm, dz=5mm  
Reference Value = 10.23 V/m; Power Drift = 0.02 dB  
Peak SAR (extrapolated) = 0.770 W/kg  
**SAR(1 g) = 0.297 W/kg; SAR(10 g) = 0.154 W/kg**  
Maximum value of SAR (measured) = 0.552 W/kg



### 23\_WLAN2.4GHz\_802.11b 1Mbps\_Left Cheek\_Ch11

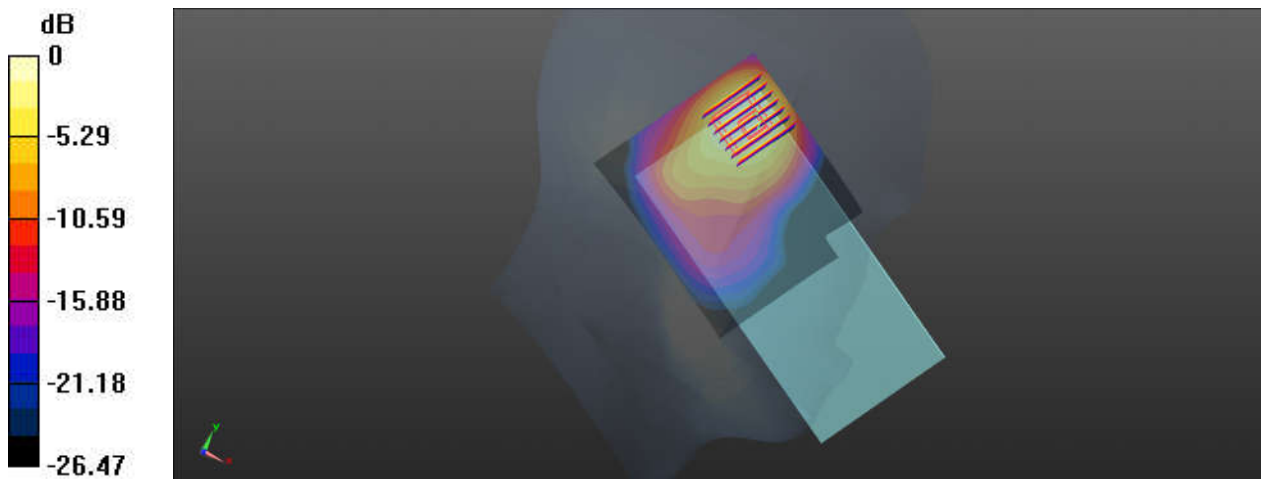
Communication System: UID 0, WIFI (0); Frequency: 2462 MHz; Duty Cycle: 1:1  
Medium: HSL\_2450\_231111 Medium parameters used:  $f = 2462$  MHz;  $\sigma = 1.815$  S/m;  $\epsilon_r = 39.693$ ;  
 $\rho = 1000$  kg/m<sup>3</sup>  
Ambient Temperature : 23.6 °C ; Liquid Temperature : 22.7 °C

#### DASY5 Configuration:

- Probe: EX3DV4 - SN7576; ConvF(8.13, 8.13, 8.13); Calibrated: 2023/8/23
- Sensor-Surface: 1.4mm (Mechanical Surface Detection)
- Electronics: DAE4 Sn1386; Calibrated: 2023/7/17
- Phantom: SAM with CRP v5.0(Front); Type: QD000P40CD; Serial: 1671
- Measurement SW: DASY52, Version 52.10 (3); SEMCAD X Version 14.6.13 (7474)

**Ch11/Area Scan (81x91x1):** Interpolated grid: dx=1.200 mm, dy=1.200 mm  
Maximum value of SAR (interpolated) = 1.30 W/kg

**Ch11/Zoom Scan (8x7x7)/Cube 0:** Measurement grid: dx=5mm, dy=5mm, dz=5mm  
Reference Value = 14.65 V/m; Power Drift = 0.09 dB  
Peak SAR (extrapolated) = 1.71 W/kg  
**SAR(1 g) = 0.650 W/kg; SAR(10 g) = 0.339 W/kg**  
Maximum value of SAR (measured) = 1.21 W/kg



0 dB = 1.21 W/kg

## 24\_WLAN5GHz\_802.11n-HT40 MCS0\_Left Cheek\_Ch54

Communication System: UID 0, WIFI (0); Frequency: 5270 MHz; Duty Cycle: 1:1.141  
Medium: HSL\_5250\_231120 Medium parameters used:  $f = 5270$  MHz;  $\sigma = 4.701$  S/m;  $\epsilon_r = 35.903$ ;  
 $\rho = 1000$  kg/m<sup>3</sup>  
Ambient Temperature : 23.5 °C; Liquid Temperature : 22.2 °C

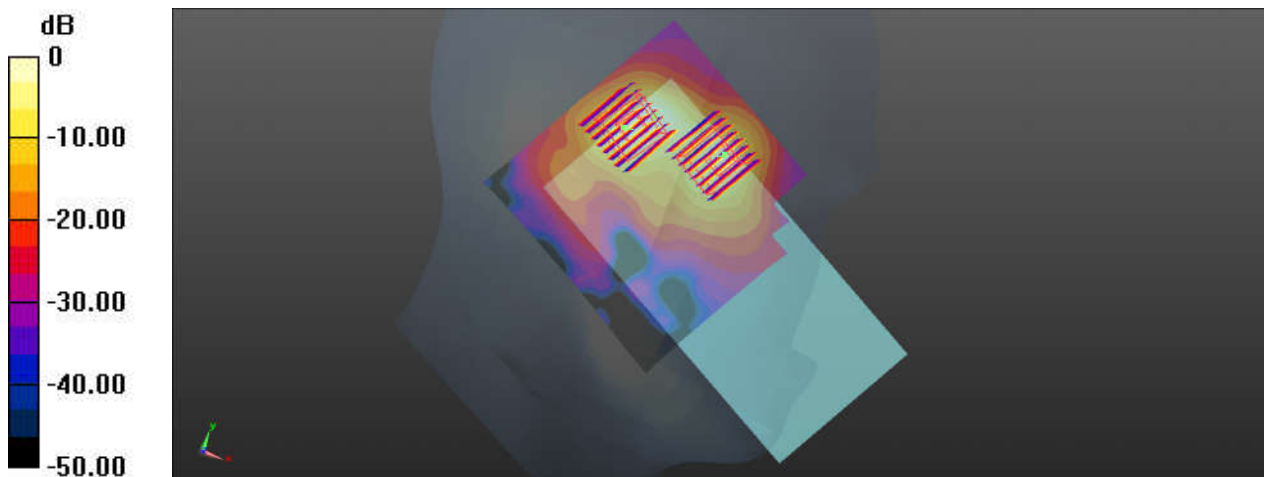
### DASY5 Configuration:

- Probe: EX3DV4 - SN7576; ConvF(5.31, 5.31, 5.31); Calibrated: 2023/8/23
- Sensor-Surface: 1.4mm (Mechanical Surface Detection)
- Electronics: DAE4 Sn1386; Calibrated: 2023/7/17
- Phantom: SAM with CRP v5.0(Front); Type: QD000P40CD; Serial: 1671
- Measurement SW: DASY52, Version 52.10 (3); SEMCAD X Version 14.6.13 (7474)

**Ch54/Area Scan (111x111x1):** Interpolated grid: dx=1.000 mm, dy=1.000 mm  
Maximum value of SAR (interpolated) = 2.26 W/kg

**Ch54/Zoom Scan (8x8x7)/Cube 0:** Measurement grid: dx=4mm, dy=4mm, dz=1.4mm  
Reference Value = 11.25 V/m; Power Drift = -0.07 dB  
Peak SAR (extrapolated) = 3.85 W/kg  
**SAR(1 g) = 0.848 W/kg; SAR(10 g) = 0.243 W/kg**  
Maximum value of SAR (measured) = 2.35 W/kg

**Ch54/Zoom Scan (8x8x7)/Cube 1:** Measurement grid: dx=4mm, dy=4mm, dz=1.4mm  
Reference Value = 11.25 V/m; Power Drift = -0.07 dB  
Peak SAR (extrapolated) = 3.57 W/kg  
**SAR(1 g) = 0.734 W/kg; SAR(10 g) = 0.221 W/kg**  
Maximum value of SAR (measured) = 1.95 W/kg



0 dB = 2.35 W/kg



## 25\_WLAN5GHz\_802.11ac-VHT80\_MCS0\_Left Cheek\_Ch122

Communication System: UID 0, WIFI (0); Frequency: 5610 MHz; Duty Cycle: 1:1.146  
Medium: HSL\_5600\_231123 Medium parameters used:  $f = 5610$  MHz;  $\sigma = 5.092$  S/m;  $\epsilon_r = 35.37$ ;  $\rho = 1000$  kg/m<sup>3</sup>  
Ambient Temperature : 23.3 °C; Liquid Temperature : 22.3 °C

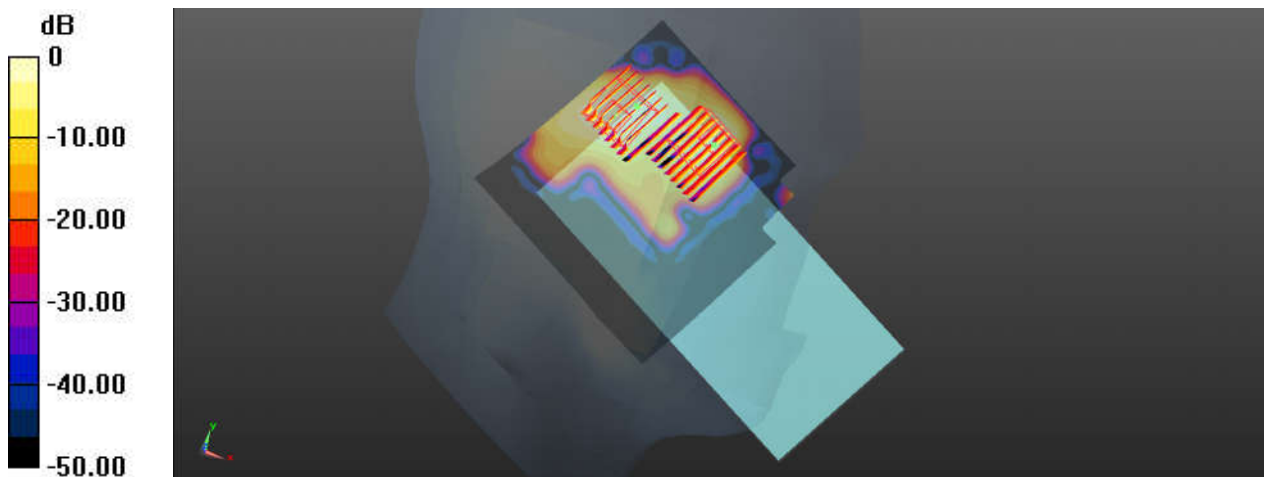
### DASY5 Configuration:

- Probe: EX3DV4 - SN7576; ConvF(4.68, 4.68, 4.68); Calibrated: 2023/8/23
- Sensor-Surface: 1.4mm (Mechanical Surface Detection)
- Electronics: DAE4 Sn1386; Calibrated: 2023/7/17
- Phantom: SAM with CRP v5.0(Front); Type: QD000P40CD; Serial: 1671
- Measurement SW: DASY52, Version 52.10 (3); SEMCAD X Version 14.6.13 (7474)

**Ch122/Area Scan (111x111x1):** Interpolated grid: dx=1.000 mm, dy=1.000 mm  
Maximum value of SAR (interpolated) = 2.00 W/kg

**Ch122/Zoom Scan (9x8x7)/Cube 0:** Measurement grid: dx=4mm, dy=4mm, dz=1.4mm  
Reference Value = 11.67 V/m; Power Drift = 0.05 dB  
Peak SAR (extrapolated) = 3.64 W/kg  
**SAR(1 g) = 0.845 W/kg; SAR(10 g) = 0.265 W/kg**  
Maximum value of SAR (measured) = 2.18 W/kg

**Ch122/Zoom Scan (9x8x7)/Cube 1:** Measurement grid: dx=4mm, dy=4mm, dz=1.4mm  
Reference Value = 11.67 V/m; Power Drift = 0.05 dB  
Peak SAR (extrapolated) = 2.66 W/kg  
**SAR(1 g) = 0.595 W/kg; SAR(10 g) = 0.175 W/kg**  
Maximum value of SAR (measured) = 1.61 W/kg



0 dB = 1.61 W/kg

## 26\_WLAN5GHz\_802.11ac-VHT80 MCS0\_Left Cheek\_Ch155

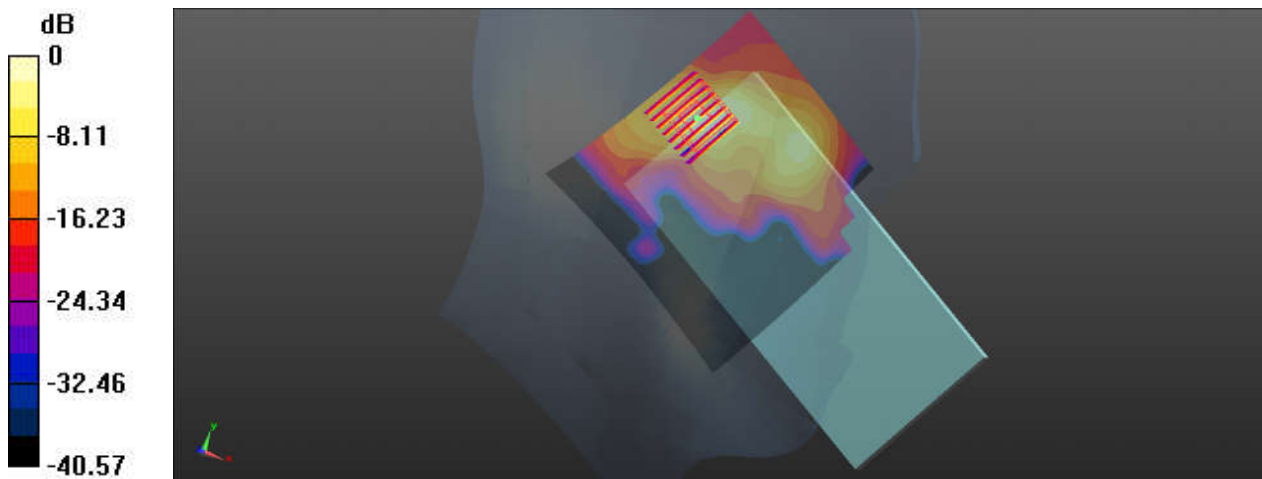
Communication System: UID 0, WIFI (0); Frequency: 5775 MHz; Duty Cycle: 1:1.146  
Medium: HSL\_5750\_231124 Medium parameters used:  $f = 5775$  MHz;  $\sigma = 5.274$  S/m;  $\epsilon_r = 35.11$ ;  $\rho = 1000$  kg/m<sup>3</sup>  
Ambient Temperature : 23.6 °C; Liquid Temperature : 22.5 °C

### DASY5 Configuration:

- Probe: EX3DV4 - SN7576; ConvF(4.87, 4.87, 4.87); Calibrated: 2023/8/23
- Sensor-Surface: 1.4mm (Mechanical Surface Detection)
- Electronics: DAE4 Sn1386; Calibrated: 2023/7/17
- Phantom: SAM with CRP v5.0(Front); Type: QD000P40CD; Serial: 1671
- Measurement SW: DASY52, Version 52.10 (3); SEMCAD X Version 14.6.13 (7474)

**Ch155/Area Scan (111x111x1):** Interpolated grid: dx=1.000 mm, dy=1.000 mm  
Maximum value of SAR (interpolated) = 1.97 W/kg

**Ch155/Zoom Scan (8x8x7)/Cube 0:** Measurement grid: dx=4mm, dy=4mm, dz=1.4mm  
Reference Value = 17.51 V/m; Power Drift = -0.12 dB  
Peak SAR (extrapolated) = 3.62 W/kg  
**SAR(1 g) = 0.766 W/kg; SAR(10 g) = 0.230 W/kg**  
Maximum value of SAR (measured) = 1.98 W/kg



0 dB = 1.98 W/kg

### 27\_LTE Band 12\_10M\_QPSK\_1RB\_25Offset\_Left Side\_10mm\_Ch23095

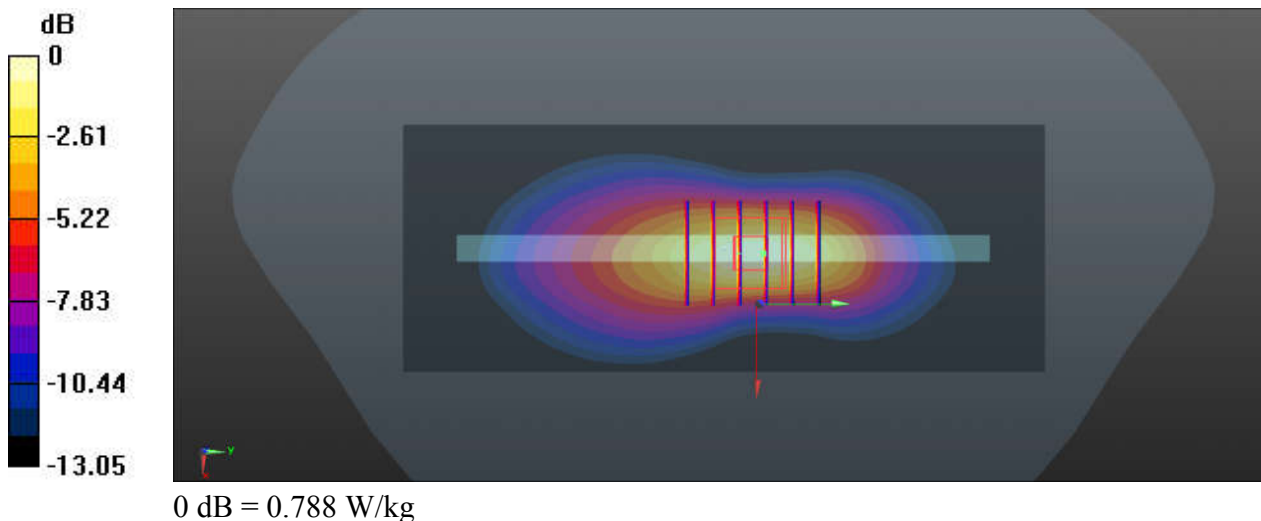
Communication System: UID 0, LTE (0); Frequency: 707.5 MHz; Duty Cycle: 1:1  
Medium: HSL\_750\_231116 Medium parameters used:  $f = 707.5$  MHz;  $\sigma = 0.862$  S/m;  $\epsilon_r = 41.72$ ;  $\rho = 1000$  kg/m<sup>3</sup>  
Ambient Temperature : 23.2 °C; Liquid Temperature : 22.6 °C

#### DASY5 Configuration:

- Probe: EX3DV4 - SN7576; ConvF(10.53, 10.53, 10.53); Calibrated: 2023/8/23
- Sensor-Surface: 1.4mm (Mechanical Surface Detection)
- Electronics: DAE4 Sn1386; Calibrated: 2023/7/17
- Phantom: SAM with CRP v5.0(Front); Type: QD000P40CD; Serial: 1671
- Measurement SW: DASY52, Version 52.10 (3); SEMCAD X Version 14.6.13 (7474)

**Ch23095/Area Scan (51x131x1):** Interpolated grid: dx=1.500 mm, dy=1.500 mm  
Maximum value of SAR (interpolated) = 0.763 W/kg

**Ch23095/Zoom Scan (5x6x7)/Cube 0:** Measurement grid: dx=8mm, dy=8mm, dz=5mm  
Reference Value = 30.69 V/m; Power Drift = 0.14 dB  
Peak SAR (extrapolated) = 0.927 W/kg  
**SAR(1 g) = 0.544 W/kg; SAR(10 g) = 0.318 W/kg**  
Maximum value of SAR (measured) = 0.788 W/kg



## 28\_LTE Band 13\_10M\_QPSK\_1RB\_25Offset\_Left Side\_10mm\_Ch23230

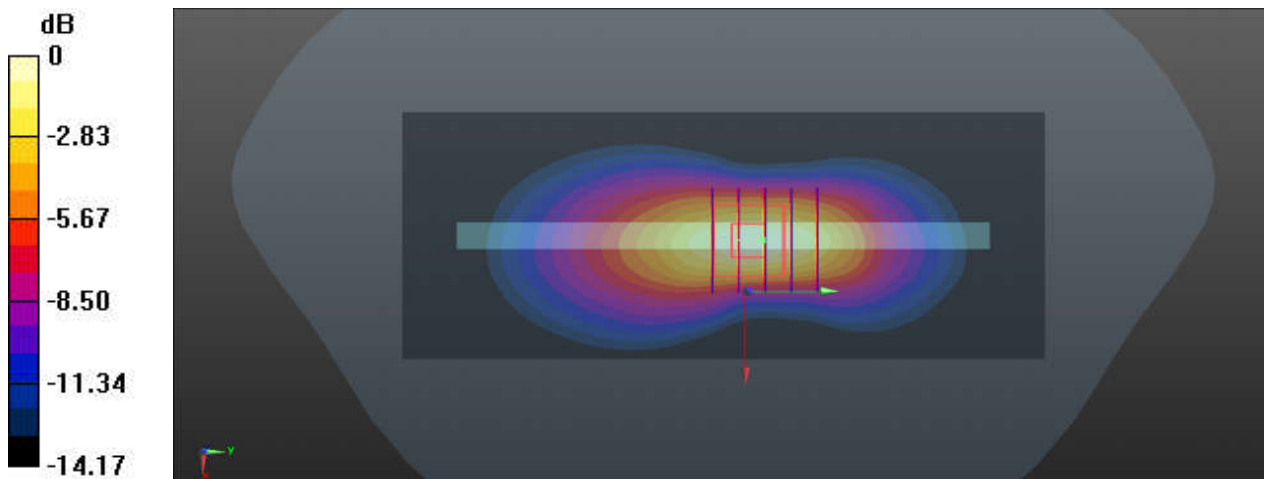
Communication System: UID 0, LTE (0); Frequency: 782 MHz; Duty Cycle: 1:1  
Medium: HSL\_750\_231116 Medium parameters used:  $f = 782 \text{ MHz}$ ;  $\sigma = 0.903 \text{ S/m}$ ;  $\epsilon_r = 40.034$ ;  $\rho = 1000 \text{ kg/m}^3$   
Ambient Temperature :  $23.2 \text{ }^\circ\text{C}$ ; Liquid Temperature :  $22.6 \text{ }^\circ\text{C}$

### DASY5 Configuration:

- Probe: EX3DV4 - SN7576; ConvF(10.53, 10.53, 10.53); Calibrated: 2023/8/23
- Sensor-Surface: 1.4mm (Mechanical Surface Detection)
- Electronics: DAE4 Sn1386; Calibrated: 2023/7/17
- Phantom: SAM with CRP v5.0(Front); Type: QD000P40CD; Serial: 1671
- Measurement SW: DASY52, Version 52.10 (3); SEMCAD X Version 14.6.13 (7474)

**Ch23230/Area Scan (51x131x1):** Interpolated grid:  $dx=1.500 \text{ mm}$ ,  $dy=1.500 \text{ mm}$   
Maximum value of SAR (interpolated) =  $1.05 \text{ W/kg}$

**Ch23230/Zoom Scan (5x5x7)/Cube 0:** Measurement grid:  $dx=8\text{mm}$ ,  $dy=8\text{mm}$ ,  $dz=5\text{mm}$   
Reference Value =  $34.66 \text{ V/m}$ ; Power Drift =  $0.04 \text{ dB}$   
Peak SAR (extrapolated) =  $1.28 \text{ W/kg}$   
**SAR(1 g) =  $0.716 \text{ W/kg}$ ; SAR(10 g) =  $0.400 \text{ W/kg}$**   
Maximum value of SAR (measured) =  $1.07 \text{ W/kg}$



0 dB =  $1.07 \text{ W/kg}$

## 29\_GSM850\_GPRS (4 Tx slots)\_Left Side\_10mm\_Ch189

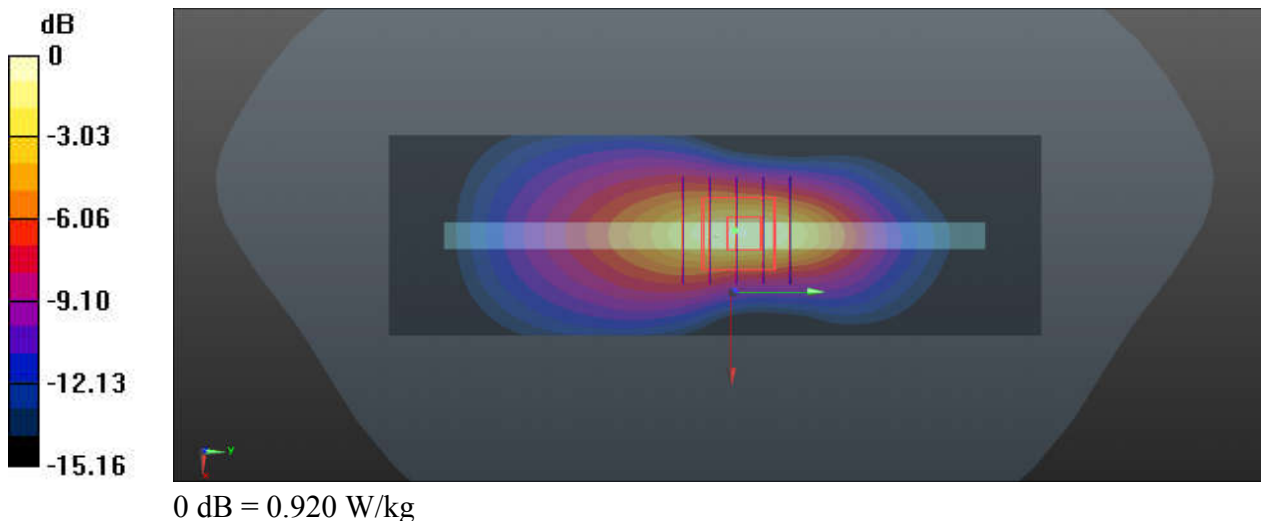
Communication System: UID 0, GPRS/EDGE12 (0); Frequency: 836.4 MHz; Duty Cycle: 1:2.08  
Medium: HSL\_835\_231119 Medium parameters used:  $f = 836.5$  MHz;  $\sigma = 0.915$  S/m;  $\epsilon_r = 41.816$ ;  
 $\rho = 1000$  kg/m<sup>3</sup>  
Ambient Temperature : 23.7 °C; Liquid Temperature : 22.4 °C

### DASY5 Configuration:

- Probe: EX3DV4 - SN7576; ConvF(10.32, 10.32, 10.32); Calibrated: 2023/8/23
- Sensor-Surface: 1.4mm (Mechanical Surface Detection)
- Electronics: DAE4 Sn1386; Calibrated: 2023/7/17
- Phantom: SAM with CRP v5.0(Front); Type: QD000P40CD; Serial: 1671
- Measurement SW: DASY52, Version 52.10 (3); SEMCAD X Version 14.6.13 (7474)

**Ch189/Area Scan (41x131x1):** Interpolated grid: dx=1.500 mm, dy=1.500 mm  
Maximum value of SAR (interpolated) = 0.742 W/kg

**Ch189/Zoom Scan (5x5x7)/Cube 0:** Measurement grid: dx=8mm, dy=8mm, dz=5mm  
Reference Value = 28.95 V/m; Power Drift = 0.09 dB  
Peak SAR (extrapolated) = 1.16 W/kg  
**SAR(1 g) = 0.595 W/kg; SAR(10 g) = 0.315 W/kg**  
Maximum value of SAR (measured) = 0.920 W/kg



### 30\_WCDMA V\_RMC 12.2Kbps\_Left Side\_10mm\_Ch4182

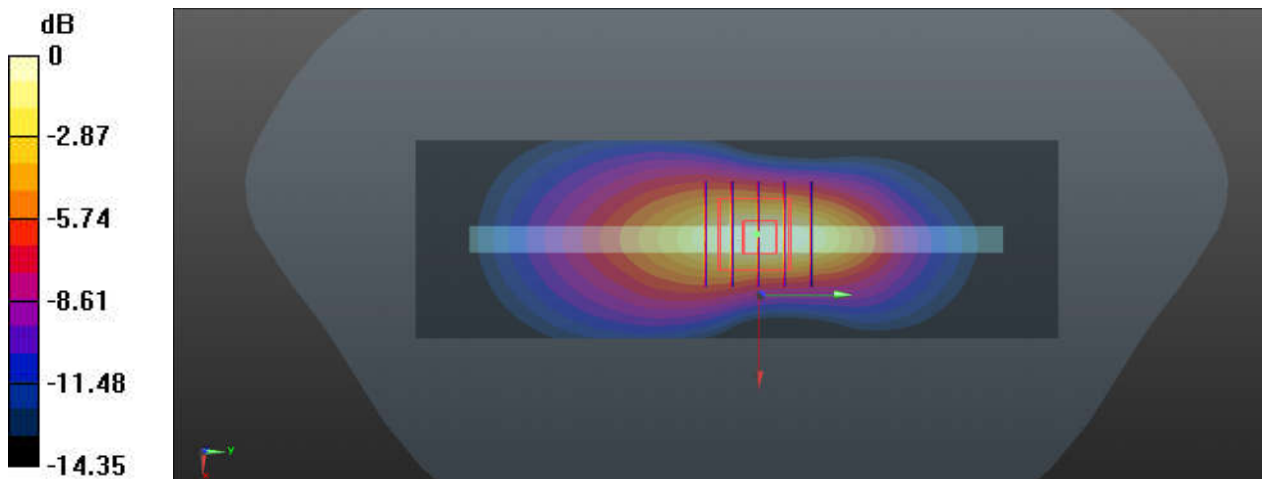
Communication System: UID 0, UMTS (0); Frequency: 836.4 MHz; Duty Cycle: 1:1  
Medium: HSL\_835\_231119 Medium parameters used:  $f = 836.5$  MHz;  $\sigma = 0.915$  S/m;  $\epsilon_r = 41.816$ ;  
 $\rho = 1000$  kg/m<sup>3</sup>  
Ambient Temperature : 23.7 °C; Liquid Temperature : 22.4 °C

#### DASY5 Configuration:

- Probe: EX3DV4 - SN7576; ConvF(10.32, 10.32, 10.32); Calibrated: 2023/8/23
- Sensor-Surface: 1.4mm (Mechanical Surface Detection)
- Electronics: DAE4 Sn1386; Calibrated: 2023/7/17
- Phantom: SAM with CRP v5.0(Front); Type: QD000P40CD; Serial: 1671
- Measurement SW: DASY52, Version 52.10 (3); SEMCAD X Version 14.6.13 (7474)

**Ch4182/Area Scan (41x131x1):** Interpolated grid: dx=1.500 mm, dy=1.500 mm  
Maximum value of SAR (interpolated) = 0.769 W/kg

**Ch4182/Zoom Scan (5x5x7)/Cube 0:** Measurement grid: dx=8mm, dy=8mm, dz=5mm  
Reference Value = 30.06 V/m; Power Drift = -0.1 dB  
Peak SAR (extrapolated) = 0.919 W/kg  
**SAR(1 g) = 0.504 W/kg; SAR(10 g) = 0.280 W/kg**  
Maximum value of SAR (measured) = 0.758 W/kg



0 dB = 0.758 W/kg

### 31\_LTE Band 26\_15M\_QPSK\_1RB\_37Offset\_Left Side\_10mm\_Ch26865

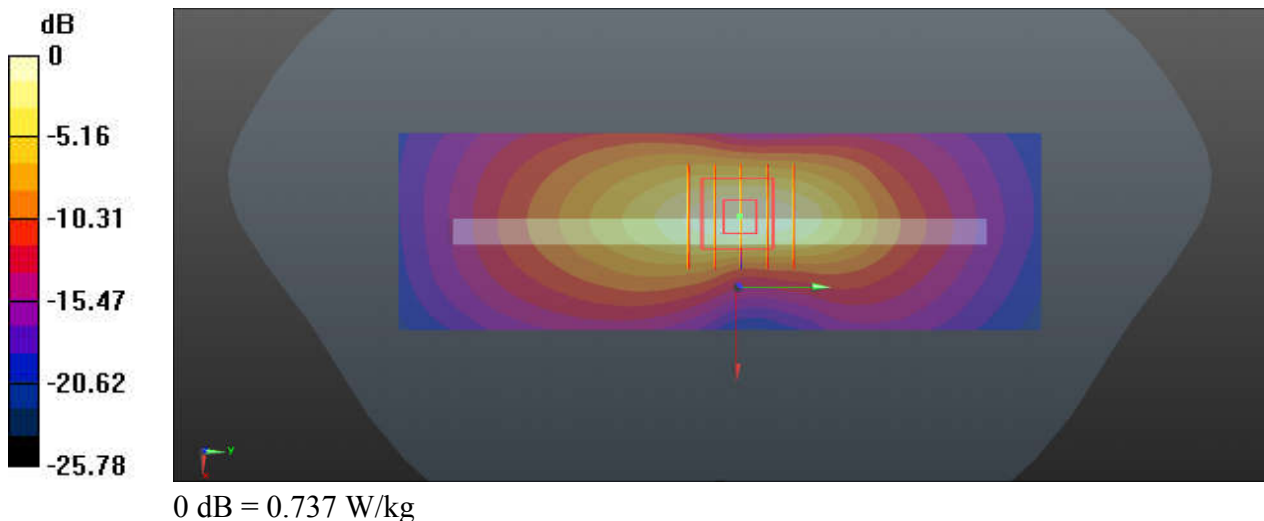
Communication System: UID 0, LTE (0); Frequency: 831.5 MHz; Duty Cycle: 1:1  
Medium: HSL\_835\_231119 Medium parameters used:  $f = 831.5$  MHz;  $\sigma = 0.911$  S/m;  $\epsilon_r = 41.858$ ;  
 $\rho = 1000$  kg/m<sup>3</sup>  
Ambient Temperature : 23.7 °C; Liquid Temperature : 22.4 °C

#### DASY5 Configuration:

- Probe: EX3DV4 - SN7576; ConvF(10.32, 10.32, 10.32); Calibrated: 2023/8/23
- Sensor-Surface: 1.4mm (Mechanical Surface Detection)
- Electronics: DAE4 Sn1386; Calibrated: 2023/7/17
- Phantom: SAM with CRP v5.0(Front); Type: QD000P40CD; Serial: 1671
- Measurement SW: DASY52, Version 52.10 (3); SEMCAD X Version 14.6.13 (7474)

**Ch26865/Area Scan (41x131x1):** Interpolated grid: dx=1.500 mm, dy=1.500 mm  
Maximum value of SAR (interpolated) = 0.723 W/kg

**Ch26865/Zoom Scan (5x5x7)/Cube 0:** Measurement grid: dx=8mm, dy=8mm, dz=5mm  
Reference Value = 26.05 V/m; Power Drift = -0.04 dB  
Peak SAR (extrapolated) = 0.876 W/kg  
**SAR(1 g) = 0.466 W/kg; SAR(10 g) = 0.253 W/kg**  
Maximum value of SAR (measured) = 0.737 W/kg



### 32\_FR1 n26\_20M\_QPSK\_1RB\_53Offset\_DFT-15\_Left Side\_10mm\_Ch166300

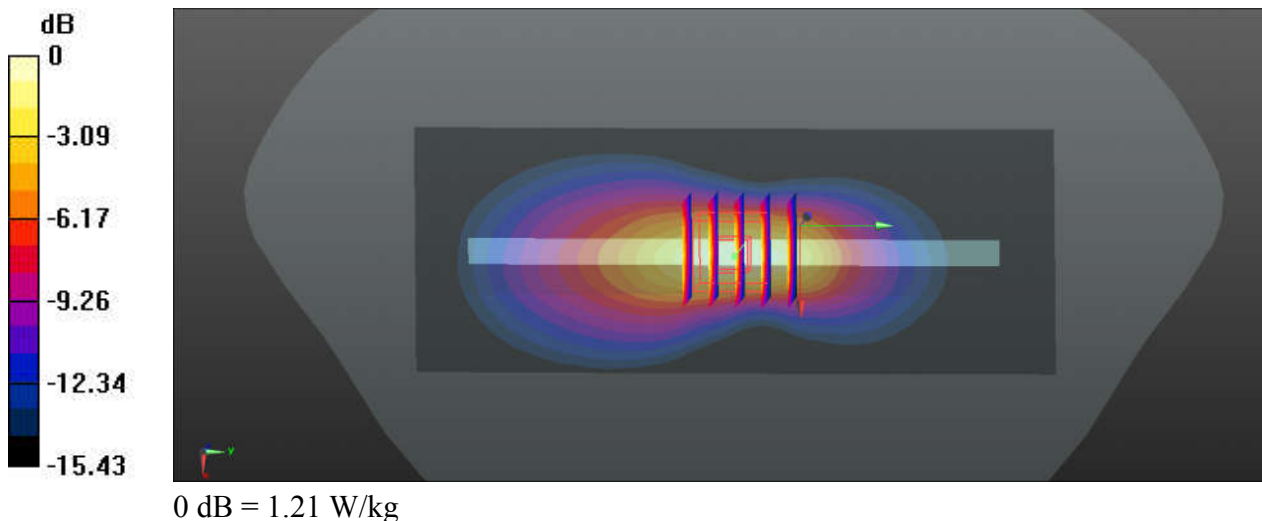
Communication System: UID 0, 5G NR (0); Frequency: 831.5 MHz; Duty Cycle: 1:1  
Medium: HSL\_835\_231119 Medium parameters used:  $f = 831.5$  MHz;  $\sigma = 0.911$  S/m;  $\epsilon_r = 41.858$ ;  
 $\rho = 1000$  kg/m<sup>3</sup>  
Ambient Temperature : 23.7 °C; Liquid Temperature : 22.4 °C

#### DASY5 Configuration:

- Probe: EX3DV4 - SN7576; ConvF(10.32, 10.32, 10.32); Calibrated: 2023/8/23
- Sensor-Surface: 1.4mm (Mechanical Surface Detection)
- Electronics: DAE4 Sn1386; Calibrated: 2023/7/17
- Phantom: SAM with CRP v5.0(Front); Type: QD000P40CD; Serial: 1671
- Measurement SW: DASY52, Version 52.10 (3); SEMCAD X Version 14.6.13 (7474)

**Ch166300/Area Scan (51x131x1):** Interpolated grid: dx=1.500 mm, dy=1.500 mm  
Maximum value of SAR (interpolated) = 1.23 W/kg

**Ch166300/Zoom Scan (5x5x7)/Cube 0:** Measurement grid: dx=8mm, dy=8mm, dz=5mm  
Reference Value = 38.22 V/m; Power Drift = 0.05 dB  
Peak SAR (extrapolated) = 1.46 W/kg  
**SAR(1 g) = 0.772 W/kg; SAR(10 g) = 0.414 W/kg**  
Maximum value of SAR (measured) = 1.21 W/kg





### 33\_WCDMA IV\_RMC 12.2Kbps\_Back\_10mm\_Ch1413

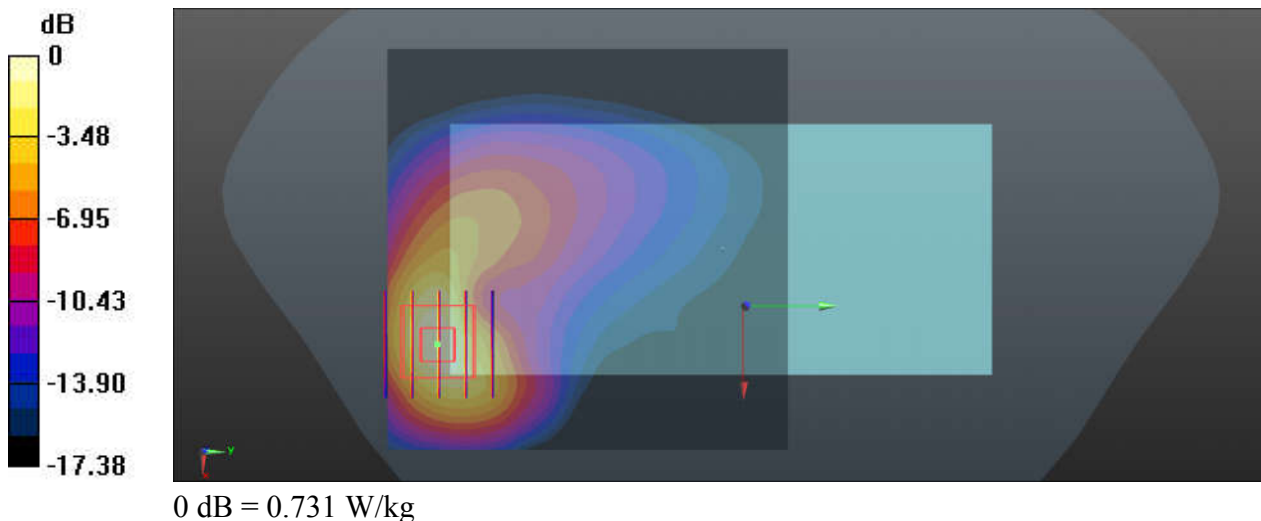
Communication System: UID 0, UMTS (0); Frequency: 1732.6 MHz; Duty Cycle: 1:1  
Medium: HSL\_1750\_231114 Medium parameters used:  $f = 1732.6$  MHz;  $\sigma = 1.345$  S/m;  $\epsilon_r = 38.634$ ;  $\rho = 1000$  kg/m<sup>3</sup>  
Ambient Temperature : 23.7 °C; Liquid Temperature : 22.5 °C

#### DASY5 Configuration:

- Probe: EX3DV4 - SN7576; ConvF(9.07, 9.07, 9.07); Calibrated: 2023/8/23
- Sensor-Surface: 1.4mm (Mechanical Surface Detection)
- Electronics: DAE4 Sn1386; Calibrated: 2023/7/17
- Phantom: SAM with CRP v5.0(Front); Type: QD000P40CD; Serial: 1671
- Measurement SW: DASY52, Version 52.10 (3); SEMCAD X Version 14.6.13 (7474)

**Ch1413/Area Scan (81x81x1):** Interpolated grid: dx=1.500 mm, dy=1.500 mm  
Maximum value of SAR (interpolated) = 0.729 W/kg

**Ch1413/Zoom Scan (5x5x7)/Cube 0:** Measurement grid: dx=8mm, dy=8mm, dz=5mm  
Reference Value = 3.960 V/m; Power Drift = 0.02 dB  
Peak SAR (extrapolated) = 0.863 W/kg  
**SAR(1 g) = 0.472 W/kg; SAR(10 g) = 0.249 W/kg**  
Maximum value of SAR (measured) = 0.731 W/kg



### 34\_LTE Band 66\_20M\_QPSK\_50RB\_24Offset\_Back\_10mm\_Ch132322

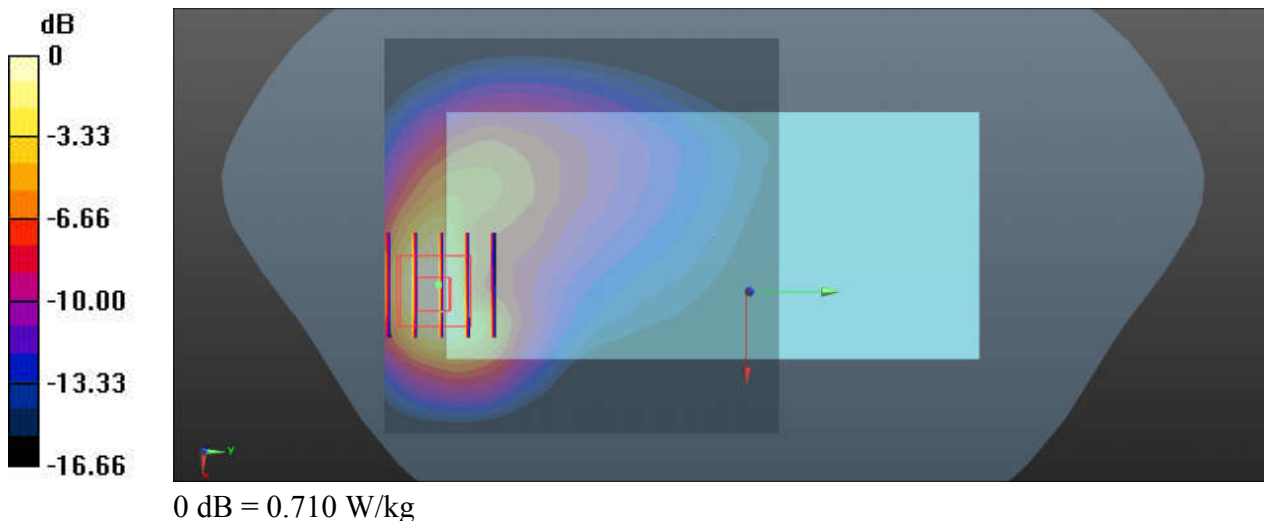
Communication System: UID 0, LTE (0); Frequency: 1745 MHz; Duty Cycle: 1:1  
Medium: HSL\_1750\_231114 Medium parameters used:  $f = 1745$  MHz;  $\sigma = 1.352$  S/m;  $\epsilon_r = 38.635$ ;  
 $\rho = 1000$  kg/m<sup>3</sup>  
Ambient Temperature : 23.7 °C; Liquid Temperature : 22.5 °C

#### DASY5 Configuration:

- Probe: EX3DV4 - SN7576; ConvF(9.07, 9.07, 9.07); Calibrated: 2023/8/23
- Sensor-Surface: 1.4mm (Mechanical Surface Detection)
- Electronics: DAE4 Sn1386; Calibrated: 2023/7/17
- Phantom: SAM with CRP v5.0(Front); Type: QD000P40CD; Serial: 1671
- Measurement SW: DASY52, Version 52.10 (3); SEMCAD X Version 14.6.13 (7474)

**Ch132322/Area Scan (81x81x1):** Interpolated grid: dx=1.500 mm, dy=1.500 mm  
Maximum value of SAR (interpolated) = 0.734 W/kg

**Ch132322/Zoom Scan (5x5x7)/Cube 0:** Measurement grid: dx=8mm, dy=8mm, dz=5mm  
Reference Value = 4.427 V/m; Power Drift = -0.09 dB  
Peak SAR (extrapolated) = 0.890 W/kg  
**SAR(1 g) = 0.486 W/kg; SAR(10 g) = 0.254 W/kg**  
Maximum value of SAR (measured) = 0.710 W/kg



### 35\_FR1 n66\_40M\_QPSK\_108RB\_54Offset\_DFT-15\_Back\_10mm\_Ch349000

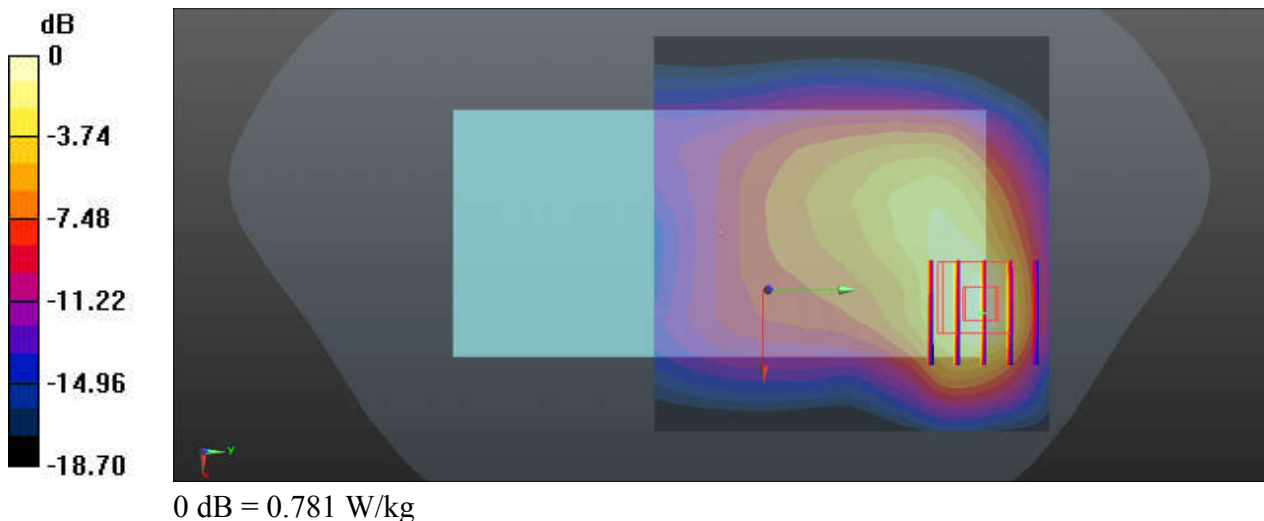
Communication System: UID 0, 5G NR (0); Frequency: 1745 MHz; Duty Cycle: 1:1  
Medium: HSL\_1750\_231114 Medium parameters used:  $f = 1745$  MHz;  $\sigma = 1.352$  S/m;  $\epsilon_r = 38.635$ ;  
 $\rho = 1000$  kg/m<sup>3</sup>  
Ambient Temperature : 23.7 °C ; Liquid Temperature : 22.5 °C

#### DASY5 Configuration:

- Probe: EX3DV4 - SN7576; ConvF(9.07, 9.07, 9.07); Calibrated: 2023/8/23
- Sensor-Surface: 1.4mm (Mechanical Surface Detection)
- Electronics: DAE4 Sn1386; Calibrated: 2023/7/17
- Phantom: SAM with CRP v5.0(Front); Type: QD000P40CD; Serial: 1671
- Measurement SW: DASY52, Version 52.10 (3); SEMCAD X Version 14.6.13 (7474)

**Ch349000/Area Scan (81x81x1):** Interpolated grid: dx=1.500 mm, dy=1.500 mm  
Maximum value of SAR (interpolated) = 0.710 W/kg

**Ch349000/Zoom Scan (5x5x7)/Cube 0:** Measurement grid: dx=8mm, dy=8mm, dz=5mm  
Reference Value = 3.245 V/m; Power Drift = 0.02 dB  
Peak SAR (extrapolated) = 0.922 W/kg  
**SAR(1 g) = 0.503 W/kg; SAR(10 g) = 0.273 W/kg**  
Maximum value of SAR (measured) = 0.781 W/kg



### 36\_GSM1900\_GPRS (4 Tx slots)\_Back\_10mm\_Ch810

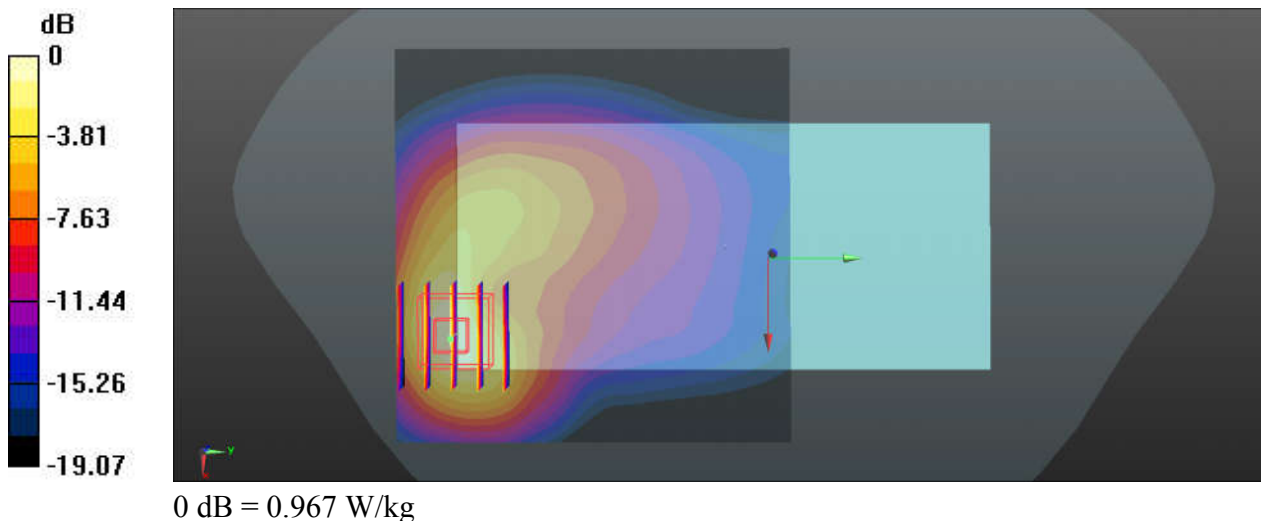
Communication System: UID 0, GPRS/EDGE12 (0); Frequency: 1909.8 MHz; Duty Cycle: 1:2.08  
Medium: HSL\_1900\_231116 Medium parameters used:  $f = 1910$  MHz;  $\sigma = 1.459$  S/m;  $\epsilon_r = 39.967$ ;  
 $\rho = 1000$  kg/m<sup>3</sup>  
Ambient Temperature : 23.2 °C; Liquid Temperature : 22.5 °C

#### DASY5 Configuration:

- Probe: EX3DV4 - SN7576; ConvF(8.69, 8.69, 8.69); Calibrated: 2023/8/23
- Sensor-Surface: 1.4mm (Mechanical Surface Detection)
- Electronics: DAE4 Sn1386; Calibrated: 2023/7/17
- Phantom: SAM with CRP v5.0(Front); Type: QD000P40CD; Serial: 1671
- Measurement SW: DASY52, Version 52.10 (3); SEMCAD X Version 14.6.13 (7474)

**Ch810/Area Scan (81x81x1):** Interpolated grid: dx=1.500 mm, dy=1.500 mm  
Maximum value of SAR (interpolated) = 0.982 W/kg

**Ch810/Zoom Scan (5x5x7)/Cube 0:** Measurement grid: dx=8mm, dy=8mm, dz=5mm  
Reference Value = 5.944 V/m; Power Drift = -0.07 dB  
Peak SAR (extrapolated) = 1.17 W/kg  
**SAR(1 g) = 0.606 W/kg; SAR(10 g) = 0.312 W/kg**  
Maximum value of SAR (measured) = 0.967 W/kg



### 37\_WCDMA II\_RMC 12.2Kbps\_Back\_10mm\_Ch9400

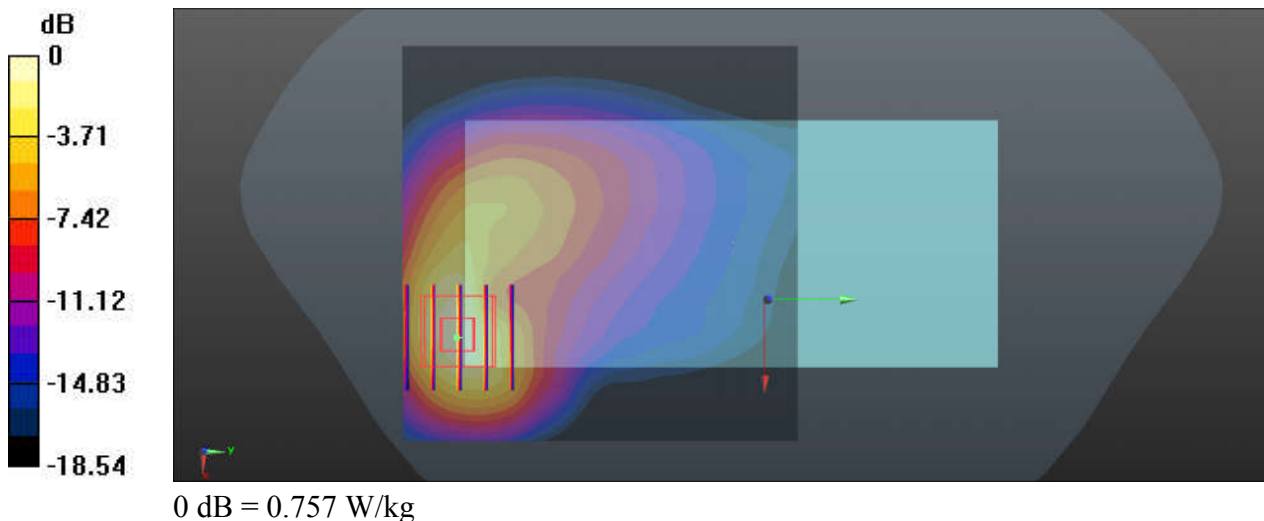
Communication System: UID 0, UMTS (0); Frequency: 1880 MHz; Duty Cycle: 1:1  
Medium: HSL\_1900\_231116 Medium parameters used:  $f = 1880$  MHz;  $\sigma = 1.429$  S/m;  $\epsilon_r = 40.102$ ;  
 $\rho = 1000$  kg/m<sup>3</sup>  
Ambient Temperature : 23.2 °C; Liquid Temperature : 22.5 °C

#### DASY5 Configuration:

- Probe: EX3DV4 - SN7576; ConvF(8.69, 8.69, 8.69); Calibrated: 2023/8/23
- Sensor-Surface: 1.4mm (Mechanical Surface Detection)
- Electronics: DAE4 Sn1386; Calibrated: 2023/7/17
- Phantom: SAM with CRP v5.0(Front); Type: QD000P40CD; Serial: 1671
- Measurement SW: DASY52, Version 52.10 (3); SEMCAD X Version 14.6.13 (7474)

**Ch9400/Area Scan (81x81x1):** Interpolated grid: dx=1.500 mm, dy=1.500 mm  
Maximum value of SAR (interpolated) = 0.770 W/kg

**Ch9400/Zoom Scan (5x5x7)/Cube 0:** Measurement grid: dx=8mm, dy=8mm, dz=5mm  
Reference Value = 4.319 V/m; Power Drift = -0.01 dB  
Peak SAR (extrapolated) = 0.912 W/kg  
**SAR(1 g) = 0.479 W/kg; SAR(10 g) = 0.248 W/kg**  
Maximum value of SAR (measured) = 0.757 W/kg



### 38\_LTE Band 2\_20M\_QPSK\_50RB\_24Offset\_Back\_10mm\_Ch18900

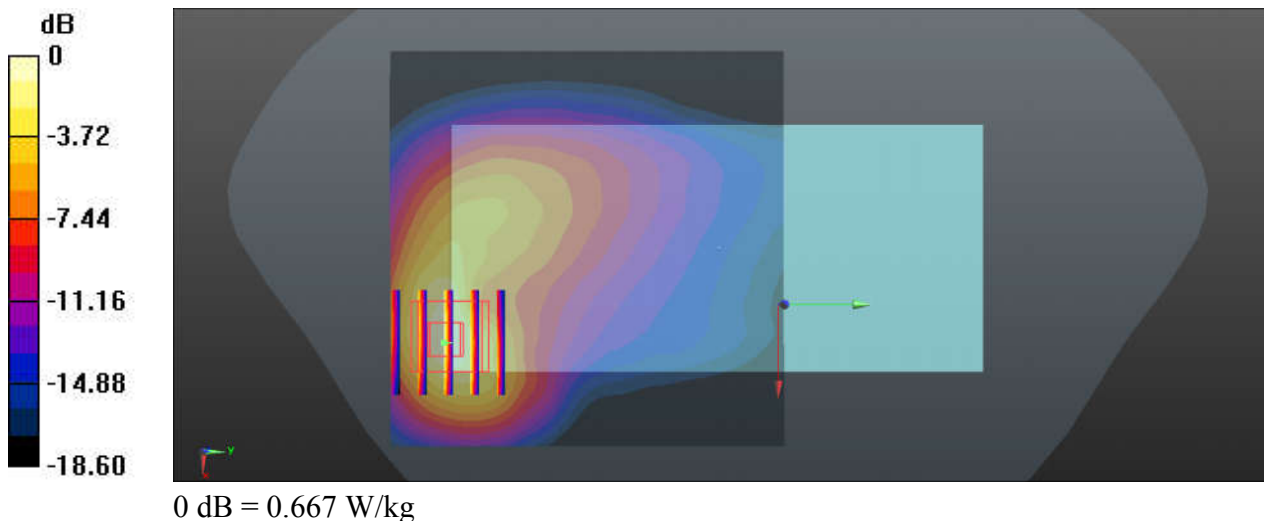
Communication System: UID 0, LTE (0); Frequency: 1880 MHz; Duty Cycle: 1:1  
Medium: HSL\_1900\_231116 Medium parameters used:  $f = 1880$  MHz;  $\sigma = 1.429$  S/m;  $\epsilon_r = 40.102$ ;  
 $\rho = 1000$  kg/m<sup>3</sup>  
Ambient Temperature : 23.2 °C; Liquid Temperature : 22.5 °C

#### DASY5 Configuration:

- Probe: EX3DV4 - SN7576; ConvF(8.69, 8.69, 8.69); Calibrated: 2023/8/23
- Sensor-Surface: 1.4mm (Mechanical Surface Detection)
- Electronics: DAE4 Sn1386; Calibrated: 2023/7/17
- Phantom: SAM with CRP v5.0(Front); Type: QD000P40CD; Serial: 1671
- Measurement SW: DASY52, Version 52.10 (3); SEMCAD X Version 14.6.13 (7474)

**Ch18900/Area Scan (81x81x1):** Interpolated grid: dx=1.500 mm, dy=1.500 mm  
Maximum value of SAR (interpolated) = 0.671 W/kg

**Ch18900/Zoom Scan (5x5x7)/Cube 0:** Measurement grid: dx=8mm, dy=8mm, dz=5mm  
Reference Value = 4.095 V/m; Power Drift = -0.12 dB  
Peak SAR (extrapolated) = 0.806 W/kg  
**SAR(1 g) = 0.422 W/kg; SAR(10 g) = 0.219 W/kg**  
Maximum value of SAR (measured) = 0.667 W/kg



### 39\_FR1 n2\_20M\_QPSK\_1RB\_53Offset\_DFT-15\_Back\_10mm\_Ch376000

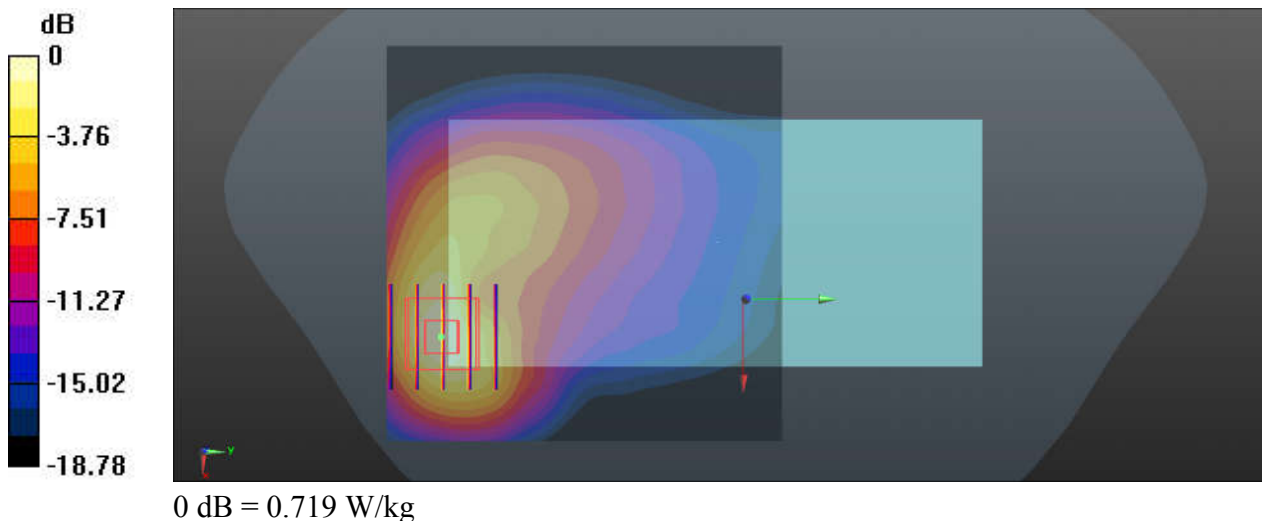
Communication System: UID 0, 5G NR (0); Frequency: 1880 MHz; Duty Cycle: 1:1  
Medium: HSL\_1900\_231116 Medium parameters used:  $f = 1880$  MHz;  $\sigma = 1.429$  S/m;  $\epsilon_r = 40.102$ ;  
 $\rho = 1000$  kg/m<sup>3</sup>  
Ambient Temperature : 23.2 °C; Liquid Temperature : 22.5 °C

#### DASY5 Configuration:

- Probe: EX3DV4 - SN7576; ConvF(8.69, 8.69, 8.69); Calibrated: 2023/8/23
- Sensor-Surface: 1.4mm (Mechanical Surface Detection)
- Electronics: DAE4 Sn1386; Calibrated: 2023/7/17
- Phantom: SAM with CRP v5.0(Front); Type: QD000P40CD; Serial: 1671
- Measurement SW: DASY52, Version 52.10 (3); SEMCAD X Version 14.6.13 (7474)

**Ch376000/Area Scan (81x81x1):** Interpolated grid: dx=1.500 mm, dy=1.500 mm  
Maximum value of SAR (interpolated) = 0.741 W/kg

**Ch376000/Zoom Scan (5x5x7)/Cube 0:** Measurement grid: dx=8mm, dy=8mm, dz=5mm  
Reference Value = 4.507 V/m; Power Drift = -0.07 dB  
Peak SAR (extrapolated) = 0.865 W/kg  
**SAR(1 g) = 0.455 W/kg; SAR(10 g) = 0.236 W/kg**  
Maximum value of SAR (measured) = 0.719 W/kg



### 40\_LTE Band 7\_20M\_QPSK\_1RB\_49Offset\_Bottom Side\_10mm\_Ch21100

Communication System: UID 0, LTE (0); Frequency: 2535 MHz; Duty Cycle: 1:1  
 Medium: HSL\_2600\_231114 Medium parameters used:  $f = 2535$  MHz;  $\sigma = 1.981$  S/m;  $\epsilon_r = 37.862$ ;  
 $\rho = 1000$  kg/m<sup>3</sup>  
 Ambient Temperature : 23.4 °C; Liquid Temperature : 22.4 °C

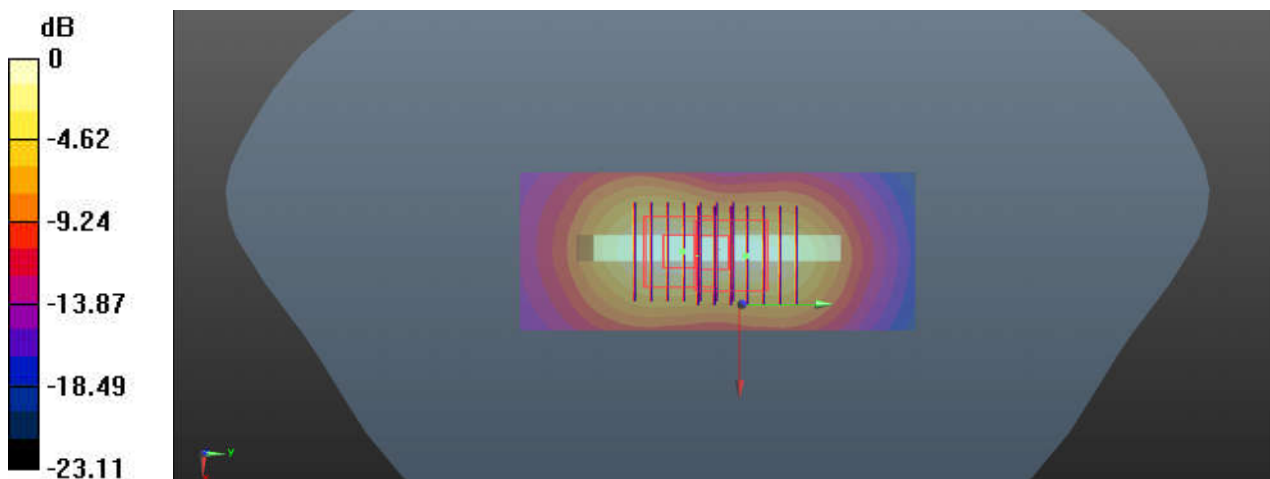
**DASY5 Configuration:**

- Probe: EX3DV4 - SN7576; ConvF(7.89, 7.89, 7.89); Calibrated: 2023/8/23
- Sensor-Surface: 1.4mm (Mechanical Surface Detection)
- Electronics: DAE4 Sn1386; Calibrated: 2023/7/17
- Phantom: SAM with CRP v5.0(Front); Type: QD000P40CD; Serial: 1671
- Measurement SW: DASY52, Version 52.10 (3); SEMCAD X Version 14.6.13 (7474)

**Ch21100/Area Scan (41x101x1):** Interpolated grid: dx=1.200 mm, dy=1.200 mm  
 Maximum value of SAR (interpolated) = 1.21 W/kg

**Ch21100/Zoom Scan (7x7x7)/Cube 0:** Measurement grid: dx=5mm, dy=5mm, dz=5mm  
 Reference Value = 23.14 V/m; Power Drift = 0.09 dB  
 Peak SAR (extrapolated) = 1.60 W/kg  
**SAR(1 g) = 0.687 W/kg; SAR(10 g) = 0.317 W/kg**  
 Maximum value of SAR (measured) = 1.21 W/kg

**Ch21100/Zoom Scan (7x7x7)/Cube 1:** Measurement grid: dx=5mm, dy=5mm, dz=5mm  
 Reference Value = 23.14 V/m; Power Drift = 0.09 dB  
 Peak SAR (extrapolated) = 1.56 W/kg  
**SAR(1 g) = 0.616 W/kg; SAR(10 g) = 0.279 W/kg**  
 Maximum value of SAR (measured) = 1.17 W/kg



0 dB = 1.17 W/kg



### 41\_LTE Band 38\_20M\_QPSK\_1RB\_49Offset\_Bottom Side\_10mm\_Ch38000

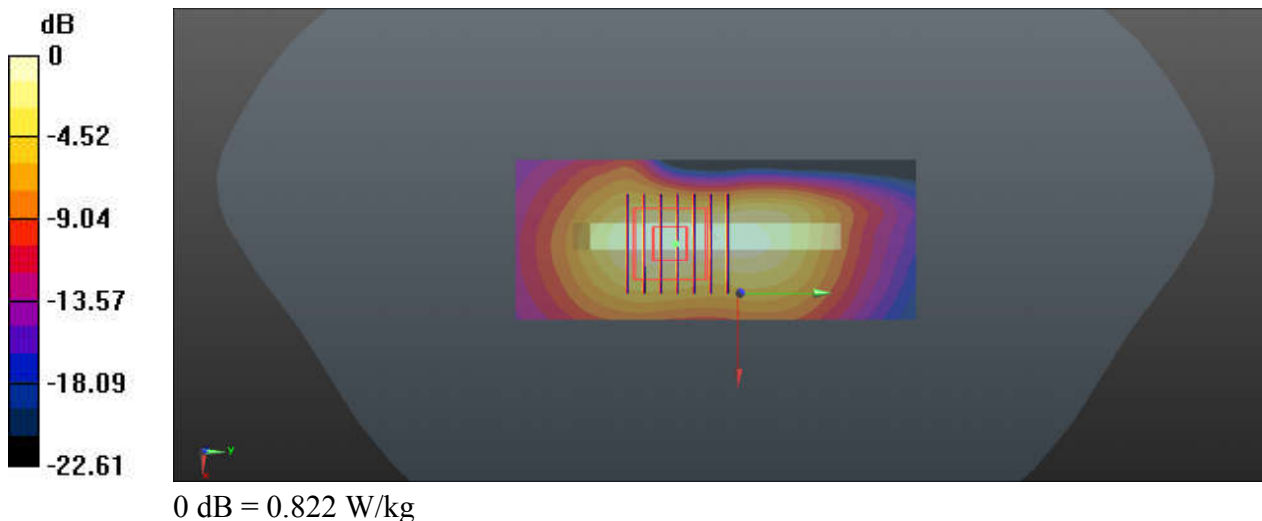
Communication System: UID 0, LTE (0); Frequency: 2595 MHz; Duty Cycle: 1:1.59  
Medium: HSL\_2600\_231114 Medium parameters used:  $f = 2595$  MHz;  $\sigma = 2.049$  S/m;  $\epsilon_r = 37.613$ ;  
 $\rho = 1000$  kg/m<sup>3</sup>  
Ambient Temperature : 23.4 °C ; Liquid Temperature : 22.4 °C

#### DASY5 Configuration:

- Probe: EX3DV4 - SN7576; ConvF(7.89, 7.89, 7.89); Calibrated: 2023/8/23
- Sensor-Surface: 1.4mm (Mechanical Surface Detection)
- Electronics: DAE4 Sn1386; Calibrated: 2023/7/17
- Phantom: SAM with CRP v5.0(Front); Type: QD000P40CD; Serial: 1671
- Measurement SW: DASY52, Version 52.10 (3); SEMCAD X Version 14.6.13 (7474)

**Ch38000/Area Scan (41x101x1):** Interpolated grid: dx=1.200 mm, dy=1.200 mm  
Maximum value of SAR (interpolated) = 0.813 W/kg

**Ch38000/Zoom Scan (7x7x7)/Cube 0:** Measurement grid: dx=5mm, dy=5mm, dz=5mm  
Reference Value = 18.30 V/m; Power Drift = 0.05 dB  
Peak SAR (extrapolated) = 1.10 W/kg  
**SAR(1 g) = 0.462 W/kg; SAR(10 g) = 0.212 W/kg**  
Maximum value of SAR (measured) = 0.822 W/kg



### 42\_LTE Band 41\_20M\_QPSK\_1RB\_49Offset\_Bottom Side\_10mm\_Ch40620

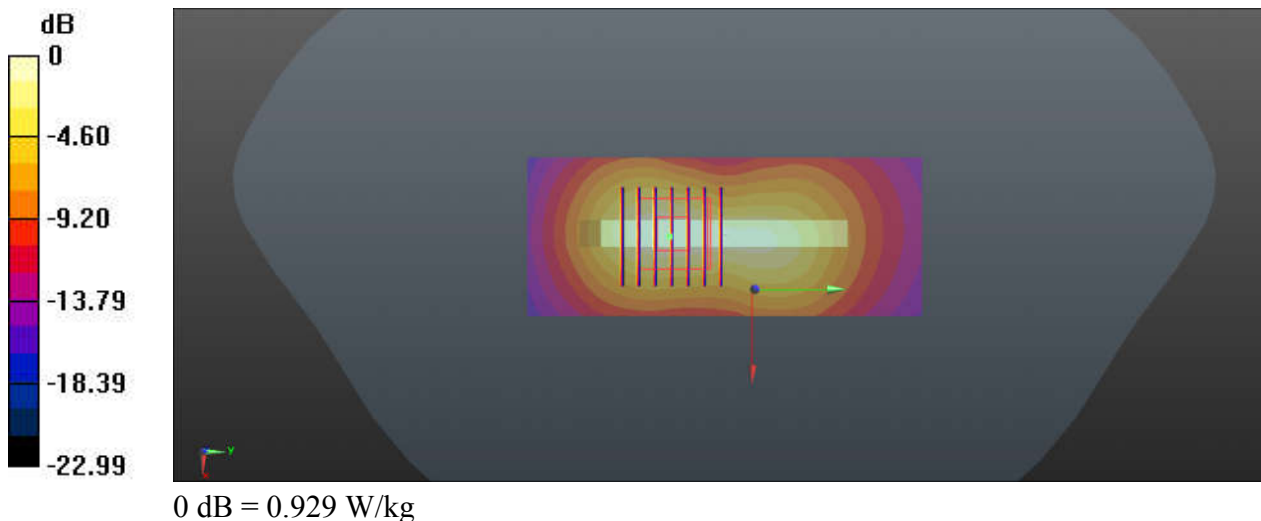
Communication System: UID 0, LTE (0); Frequency: 2593 MHz; Duty Cycle: 1:2.331  
Medium: HSL\_2600\_231114 Medium parameters used:  $f = 2593$  MHz;  $\sigma = 2.047$  S/m;  $\epsilon_r = 37.628$ ;  
 $\rho = 1000$  kg/m<sup>3</sup>  
Ambient Temperature : 23.4 °C ; Liquid Temperature : 22.4 °C

#### DASY5 Configuration:

- Probe: EX3DV4 - SN7576; ConvF(7.89, 7.89, 7.89); Calibrated: 2023/8/23
- Sensor-Surface: 1.4mm (Mechanical Surface Detection)
- Electronics: DAE4 Sn1386; Calibrated: 2023/7/17
- Phantom: SAM with CRP v5.0(Front); Type: QD000P40CD; Serial: 1671
- Measurement SW: DASY52, Version 52.10 (3); SEMCAD X Version 14.6.13 (7474)

**Ch40620/Area Scan (41x101x1):** Interpolated grid: dx=1.200 mm, dy=1.200 mm  
Maximum value of SAR (interpolated) = 0.929 W/kg

**Ch40620/Zoom Scan (7x7x7)/Cube 0:** Measurement grid: dx=5mm, dy=5mm, dz=5mm  
Reference Value = 19.26 V/m; Power Drift = 0.11 dB  
Peak SAR (extrapolated) = 1.24 W/kg  
**SAR(1 g) = 0.534 W/kg; SAR(10 g) = 0.246 W/kg**  
Maximum value of SAR (measured) = 0.929 W/kg



### 43\_FR1 n7\_40M\_QPSK\_1RB\_108Offset\_Bottom Side\_10mm\_Ch507000

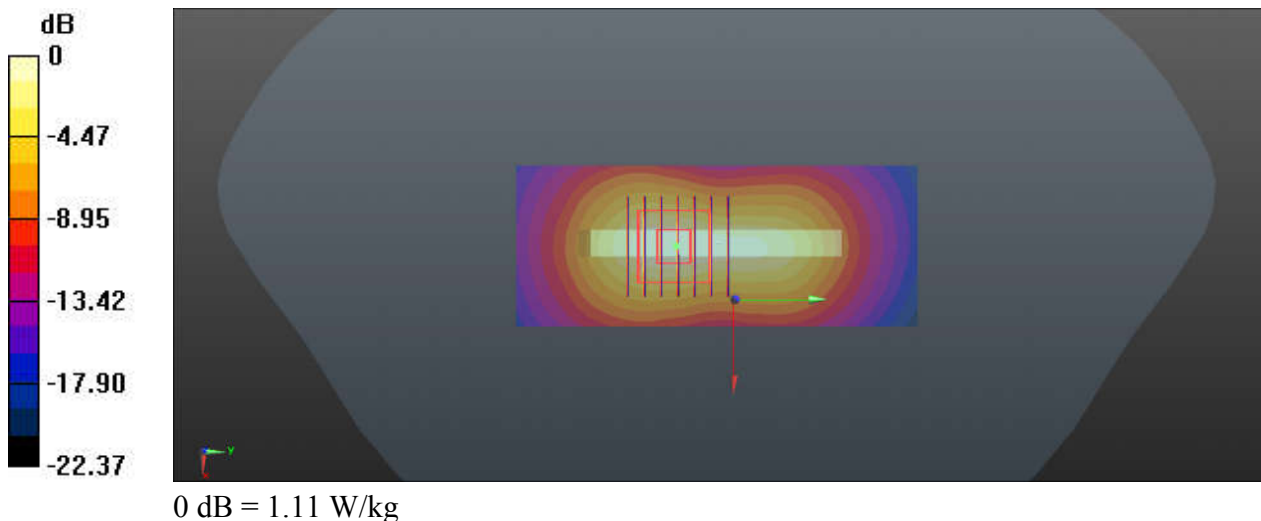
Communication System: UID 0, 5G NR (0); Frequency: 2535 MHz; Duty Cycle: 1:1  
Medium: HSL\_2600\_231114 Medium parameters used:  $f = 2535$  MHz;  $\sigma = 1.981$  S/m;  $\epsilon_r = 37.862$ ;  
 $\rho = 1000$  kg/m<sup>3</sup>  
Ambient Temperature : 23.4 °C; Liquid Temperature : 22.4 °C

#### DASY5 Configuration:

- Probe: EX3DV4 - SN7576; ConvF(7.89, 7.89, 7.89); Calibrated: 2023/8/23
- Sensor-Surface: 1.4mm (Mechanical Surface Detection)
- Electronics: DAE4 Sn1386; Calibrated: 2023/7/17
- Phantom: SAM with CRP v5.0(Front); Type: QD000P40CD; Serial: 1671
- Measurement SW: DASY52, Version 52.10 (3); SEMCAD X Version 14.6.13 (7474)

**Ch507000/Area Scan (41x101x1):** Interpolated grid: dx=1.200 mm, dy=1.200 mm  
Maximum value of SAR (interpolated) = 1.11 W/kg

**Ch507000/Zoom Scan (7x7x7)/Cube 0:** Measurement grid: dx=5mm, dy=5mm, dz=5mm  
Reference Value = 21.99 V/m; Power Drift = 0.11 dB  
Peak SAR (extrapolated) = 1.45 W/kg  
**SAR(1 g) = 0.636 W/kg; SAR(10 g) = 0.296 W/kg**  
Maximum value of SAR (measured) = 1.11 W/kg



### 44\_FR1 n38\_40M\_QPSK\_50RB\_28Offset\_DFT-30\_Bottom Side\_10mm\_Ch519000

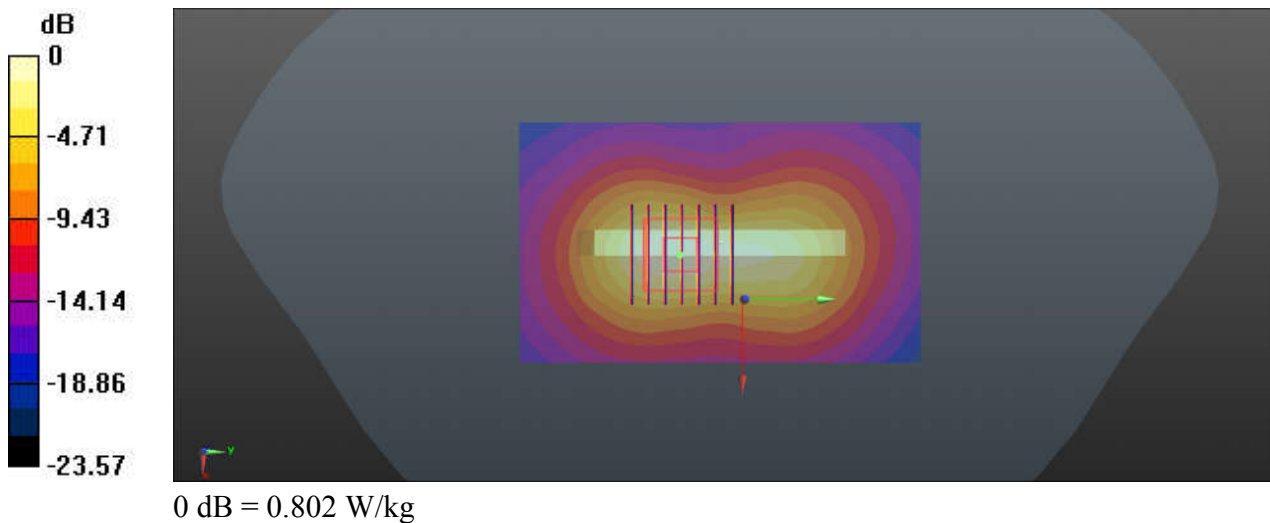
Communication System: UID 0, 5G NR (0); Frequency: 2595 MHz; Duty Cycle: 1:1  
Medium: HSL\_2600\_231114 Medium parameters used:  $f = 2595$  MHz;  $\sigma = 2.049$  S/m;  $\epsilon_r = 37.613$ ;  
 $\rho = 1000$  kg/m<sup>3</sup>  
Ambient Temperature : 23.4 °C; Liquid Temperature : 22.4 °C

#### DASY5 Configuration:

- Probe: EX3DV4 - SN7576; ConvF(7.89, 7.89, 7.89); Calibrated: 2023/8/23
- Sensor-Surface: 1.4mm (Mechanical Surface Detection)
- Electronics: DAE4 Sn1386; Calibrated: 2023/7/17
- Phantom: SAM with CRP v5.0(Front); Type: QD000P40CD; Serial: 1671
- Measurement SW: DASY52, Version 52.10 (3); SEMCAD X Version 14.6.13 (7474)

**Ch519000/Area Scan (61x101x1):** Interpolated grid: dx=1.200 mm, dy=1.200 mm  
Maximum value of SAR (interpolated) = 0.802 W/kg

**Ch519000/Zoom Scan (7x7x7)/Cube 0:** Measurement grid: dx=5mm, dy=5mm, dz=5mm  
Reference Value = 17.23 V/m; Power Drift = -0.09 dB  
Peak SAR (extrapolated) = 1.07 W/kg  
**SAR(1 g) = 0.449 W/kg; SAR(10 g) = 0.204 W/kg**  
Maximum value of SAR (measured) = 0.802 W/kg



### 45\_FR1 n41\_100M\_QPSK\_135RB\_69Offset\_DFT-30\_Bottom Side\_10mm\_Ch518598

Communication System: UID 0, 5G NR (0); Frequency: 2592.99 MHz; Duty Cycle: 1:1  
Medium: HSL\_2600\_231114 Medium parameters used:  $f = 2593$  MHz;  $\sigma = 2.047$  S/m;  $\epsilon_r = 37.628$ ;  
 $\rho = 1000$  kg/m<sup>3</sup>  
Ambient Temperature : 23.4 °C; Liquid Temperature : 22.4 °C

#### DASY5 Configuration:

- Probe: EX3DV4 - SN7576; ConvF(7.89, 7.89, 7.89); Calibrated: 2023/8/23
- Sensor-Surface: 1.4mm (Mechanical Surface Detection)
- Electronics: DAE4 Sn1386; Calibrated: 2023/7/17
- Phantom: SAM with CRP v5.0(Front); Type: QD000P40CD; Serial: 1671
- Measurement SW: DASY52, Version 52.10 (3); SEMCAD X Version 14.6.13 (7474)

**Ch518598/Area Scan (61x101x1):** Interpolated grid: dx=1.200 mm, dy=1.200 mm  
Maximum value of SAR (interpolated) = 0.992 W/kg

**Ch518598/Zoom Scan (7x7x7)/Cube 0:** Measurement grid: dx=5mm, dy=5mm, dz=5mm  
Reference Value = 19.05 V/m; Power Drift = 0.07 dB  
Peak SAR (extrapolated) = 1.32 W/kg  
**SAR(1 g) = 0.549 W/kg; SAR(10 g) = 0.248 W/kg**  
Maximum value of SAR (measured) = 0.983 W/kg

