

日期 (Date)	版本 (Version)	变更 (Update)
2023.04.11	V1.00	首次发布 (First release.)

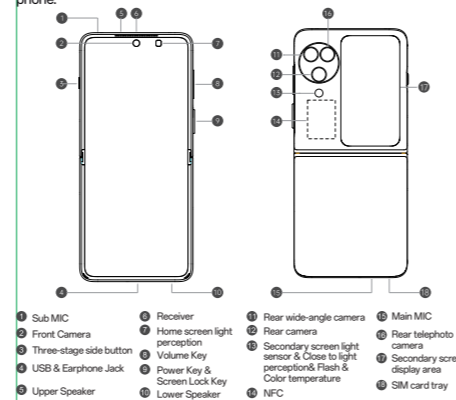
印刷 —— --- 标注 —— --- 刀线

## Quick Guide

This user manual provides the product safety information. Before using the phone, please read the Quick Guide carefully.

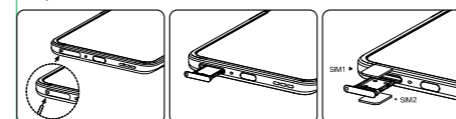
### Greetings from OPPO Mobile

This guide will show you how to use the phone and its important functions. You may also visit [OPPO official website](#) to get more information about the phone.



### Install SIM and Memory card

Please turn off the phone before inserting the card. This product is only compatible with Nano SIM on both slots of the SIM card holder. Inserting non-standard cards can cause damage to phone SIM card holder. Keep SIM Ejector Tool out of reach of children, to prevent accidental ingestion or impalement.



### How to Transfer Old Mobile Content to a New Mobile

You can use [OPPO Clone Phone](#) to easily transfer photos, videos, music, contacts, messages, apps, etc from your old phone to the new one.  
 1. If your previous phone was a non-OPPO Android phone, search "OPPO Clone Phone" in the Google Play store and install the app. You can also scan the QR code below to install it. If your previous phone was an OPPO phone, you don't need to install this app. Then run Clone Phone on both phones and follow the on-screen instructions.



<https://i.clonephone.coloros.com/download>

2. If your previous phone was an iPhone, run "Clone Phone" on your new phone, and follow the onscreen instructions to migrate your data from your iCloud account.



### Performance parameters

Product	CPH2519	
SAR Values	FCC SAR	X.XXW/kg(Head) X.XXW/kg(Body)

Note: The SAR values above are the highest values reported for this device.

### Radio Waves Specifications

Radio	Frequency	Max. Output Power
GSM	850MHz	33.2dBm
	900MHz	33.7dBm
	1800MHz	31.1dBm
	1900MHz	30.8dBm
WCDMA	Bands 1/5/6/8/19	24.7dBm
	Bands 2/4	24.2dBm
	Bands 1/3/8/18/40	24.7dBm
LTE FDD	Bands 5/19/20/26	25dBm
	Bands 12/17	24.5dBm
	Band 28	24.8dBm
	Band 4	24.2dBm
	Band 2	23.8dBm
	Band 7/66	24.1dBm
	Bands 29/32	/
	Band 34	/
	Bands 38/39/40/41	24.7dBm
	5G NR	n1
n2/66		24.2dBm
n3		24.8dBm
n7		24.5dBm
n5/8/20		24.9dBm
n12/38/40/41/77		24.6dBm
n78		26.7dBm
Bluetooth		2.4-2.4835GHz
2.4G Wi-Fi	2.4-2.4835GHz	16.3dBm(EIRP)
	5.15-5.25GHz	19.0dBm(EIRP)
5G Wi-Fi	5.25-5.35GHz	19.0dBm(EIRP)
	5.47-5.725GHz	19.5dBm(EIRP)
	5.725-5.85GHz	22.3dBm(EIRP)
NFC	13.56MHz	42dB $\mu$ A/m@10m

### How to switch system languages

Go to Settings - Additional settings - Keyboard & input method - Manage keyboards - Gboard - Languages - Add keyboard, Add your prefer languages

The device supports: English, Hindi & Nepali, for inputting. The device also supports: Assamese, Bengali(Bangla), Gujarati, Hindi, Kannada, Kashmiri, Konkani, Malayalam, Manipuri(Bangla), Marathi, Nepali, Oriya, Punjabi, Sanskrit, Sindhi(Devanagari), Tamil, Telugu, Urdu, Bodo (Boro), Santhali(OlChiki), Maithili, Dogri, Manipuri (MeeteiMayek), Santhali (Devnagari) and English for readability.

### Regulatory

Steps to search Indian Regulatory: Go to Settings>About device>Regulatory.

### How to reboot the phone

Press and hold the Power Button and Volume Up Button at the same time until the OPPO boot animation is displayed to reboot the phone.

### Standard accessories

You are provided with the following standard accessories:  
 1 Phone, 1 Charger, 1 USB data cable, 1 Safety Guide, 1 Quick Guide, 1 SIM Ejector Tool, 1 Protective Case.

Some content may differ from your device depending on the region, service provider, or software version, and is subject to change without prior notice.

Copyright © Guangdong OPPO Mobile Telecommunications Corp., Ltd. 2023. All rights reserved.

612804000106 V01



### 技术规格:

- 1、材质: 128g哑粉纸 (纯白)
- 2、140×70mm
- 3、颜色 90%黑
- 4、折页

公差参考未标注公差表

		物料代码 (P/N)	612804000106
		物料名称 (Name)	入门指南
设计 (Designer) / 日期 (Date)	王逸英 / 2023.06.20	项目 (Project)	Flamingo
电话 (Tel)	136 8601 5729	版本 (Version)	VX.XX
邮箱 (Email)	wyy@oppo.com	状态 (Status)	量产
审核 (Check) / 日期 (Date)	XXX / 2022.03.24	页码 (Page)	第 1 页, 共 1 页
批准 (Approval) / 日期 (Date)	XXX / 20XX.XX.XX	受控文件	