

Antenna Gain test report

FCC ID:

Equipment: Smart Phone

Brand Name: OPPO

Model Name: CPH2437

Manufacturer: Guangdong OPPO Mobile

Telecommunications Corp., Ltd.

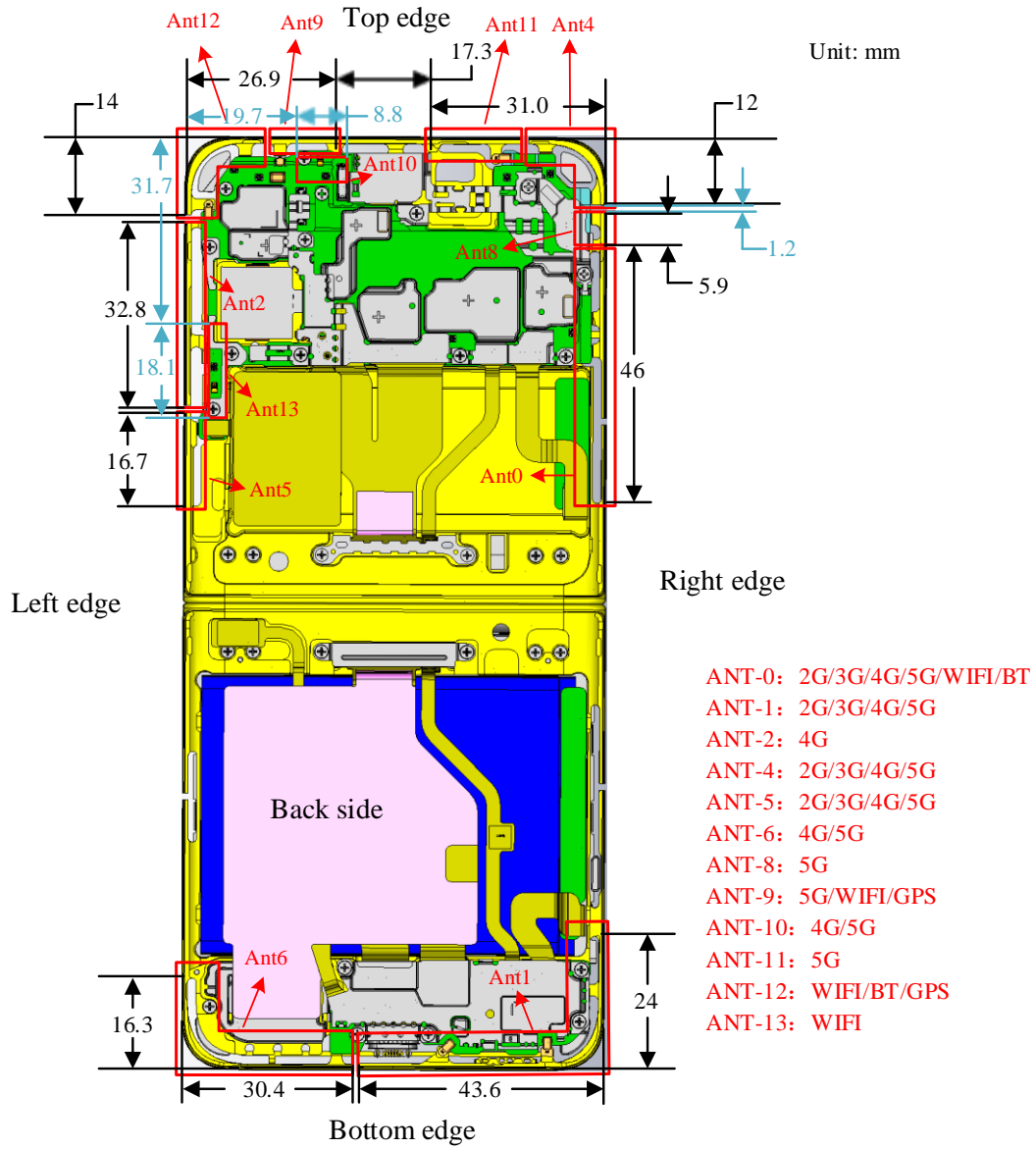
NO.18 Haibin Road, Wusha Village,

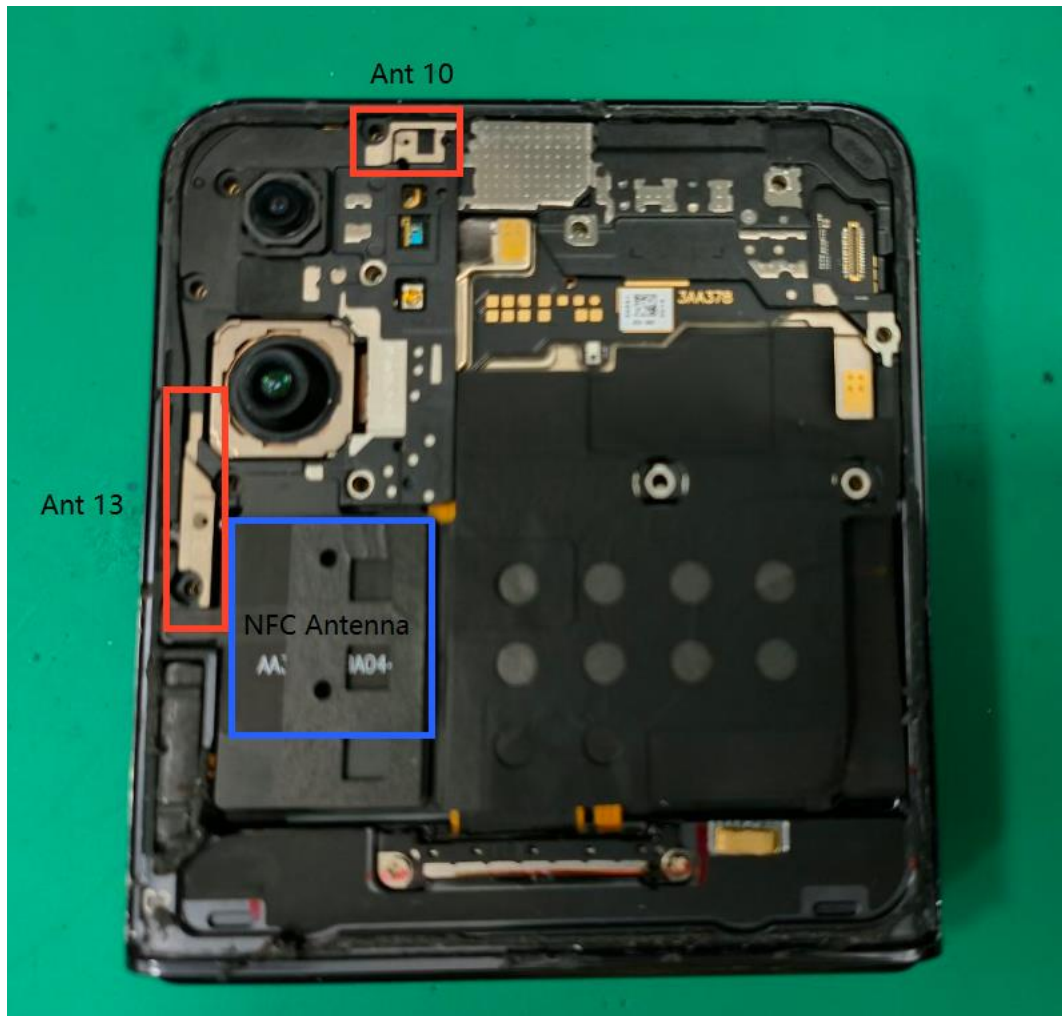
Chang'an Town, Dongguan City,

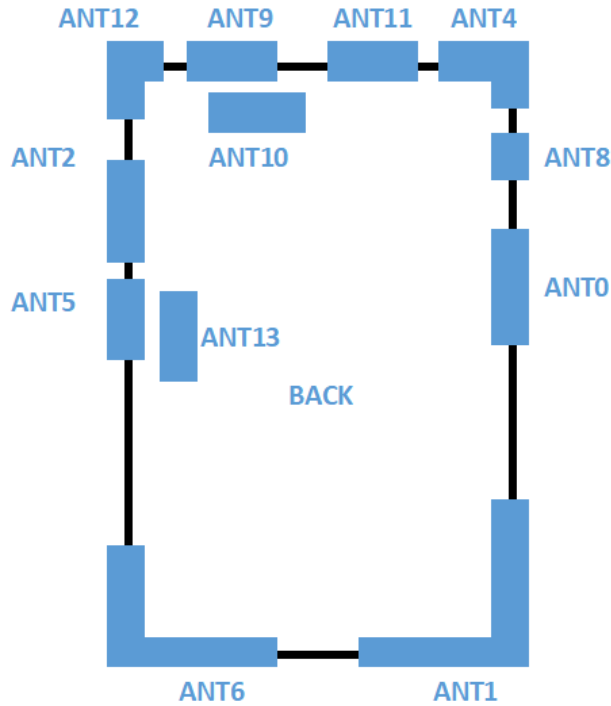
Guangdong, China

Issue Date: **February 8, 2022**

Antenna Location:







Antenna	Support bands
Ant 0	TX/RX GSM850/GSM900 TX/RX WCDMA B5/6/8/19 TX/RX LTE B5/8/12/17/18/19/20/26/28 TX/RX NR N5/8/12/20/28 RX LTE B1/3/4/7/38/41/66 RX NR N1/3/7/38/41/66 TX/RX Wifi 2.4G Chain1 TX/RX BT TX/RX NSA-LTE B1/3/7/66 TX/RX NSA-NR N1/3/7/38/41
Ant 1	TX/RX GSM850/GSM900 TX/RX WCDMA B5/6/8/19 TX/RX LTE B5/8/12/17/18/19/20/26/28 TX/RX NR N5/8/12/20/28
Ant 2	TX/RX LTE B20 TX/RX NSA N20
Ant 4	TX/RX GSM1800/1900 TX/RX WCDMA B1/2/4 TX/RX LTE 1/2/3/4/7/25/38/39/40/41/66 RX LTE B32 TX/RX NR 1/2/3/7/25/38/40/41/66
Ant 5	TX/RX GSM1800/1900 TX/RX WCDMA B1/2/4 TX/RX LTE 1/2/3/4/7/25/38/39/40/41/66

Test Report**Report No.:OP20220208**

	RX LTE B32 TX/RX NR N1/2/3/7/25/38/40/41/66 TX/RX NR N77/78 RX NR N79
Ant 6	RX LTE 1/3/4/7/38/40/41/66 RX NR 1/3/7/38/40/41/66 TX/RX NSA-LTE B1/3/7/66 TX/RX NSA-N1/3/7/38/40/41
Ant 8	TX/RX N77/78/79
Ant 9	TX/RX N77/78 TX/RX Wifi 5G Chain1 RX GPS L5
Ant 10	RX LTE B40 RX NR N40 RX NR N79
Ant 11	TX/RX N77/78/79
Ant 12	TX/RX Wifi 2.4G Chain0 TX/RX BT RX GPS L1
Ant 13	TX/RX Wifi 5G Chain0

Antenna Gain and Antenna Type specification:

Note: Antenna gain was measured in the anechoic chamber, 3D scan was exercised, and the highest numbers are reported in this document

NFC Antenna Type: Metal Frame and FPC

Area: 3720mm²

Catgory: A

Test Report

Report No.:OP20220208

n25	1850 - 1915 MHz					-2.4	-0.78								Fixed Intern al
n28	703 - 748 MHz	-7.2	-5.5												Fixed Intern al
n38	2570 - 2620 MHz	-2.1				-1.4	-1.2	-1.63							Fixed Intern al
n40	2300 - 2400 MHz					-1.3	-2.2	-1.3							Fixed Intern al
n41	2496 - 2690 MHz	-2.1				-1.4	-1.2	-1.63							Fixed Intern al
n66	1710 - 1780 MHz	-5.7				-2.4	-1.49	-1.56							Fixed Intern al
n77	3300 - 4200 MHz						0.05			-0.9	0.6		-0.4		Fixed Intern al
n78	3300 - 3800 MHz						0.05			-0.9	0.6		-0.4		Fixed Intern al

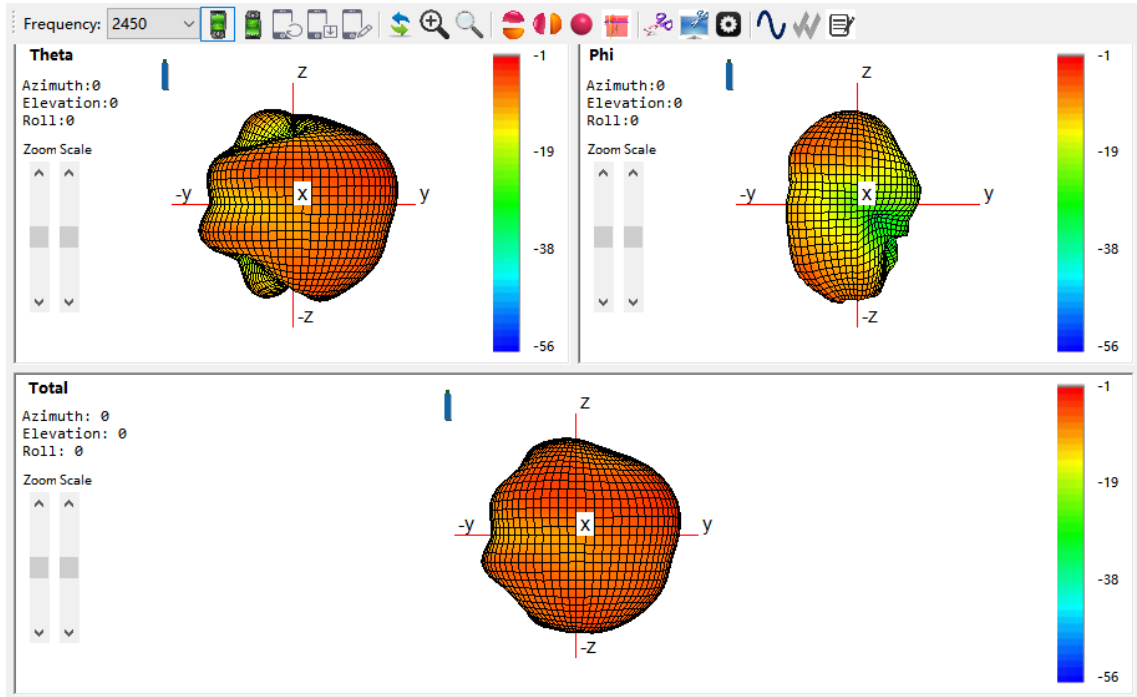
Test Report

Report No.:OP20220208

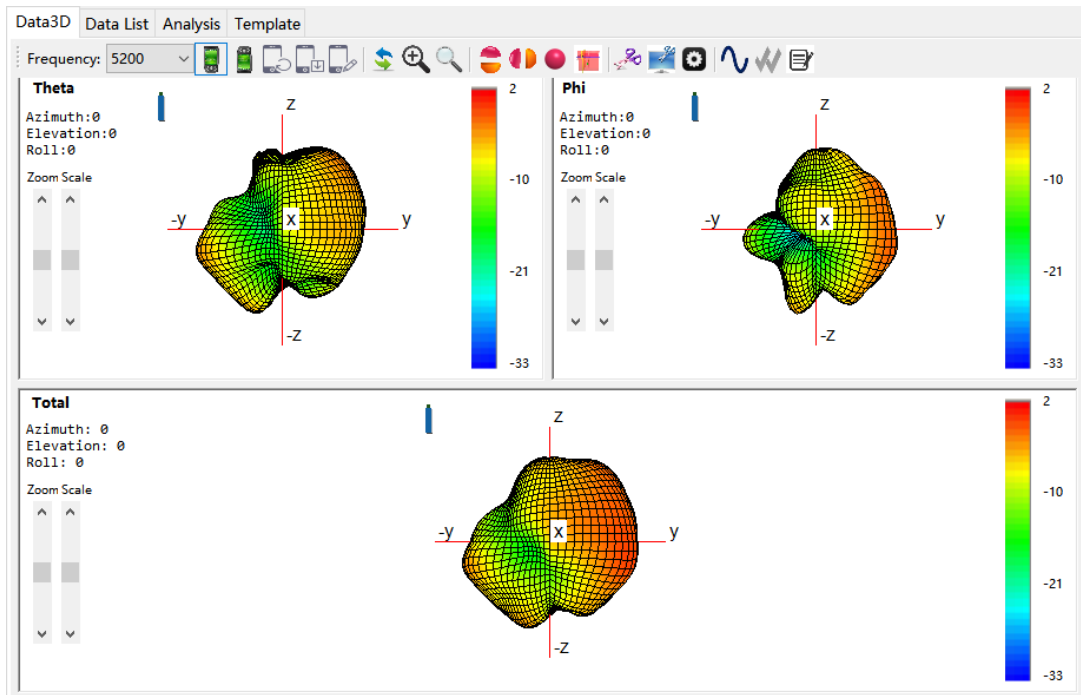
n79	4400 - 5000 MHz										-1.5			-3.7		Fixed Internal	
2.4G WiFi	2400~2483.5MHz	-1.69													-0.31		Fixed Internal
5G WiFi	5150~5340MHz											1.38				-0.81	Fixed Internal
	5480~5720MHz											1.19				-0.32	Fixed Internal
	5740~5820MHz											-0.26				-0.69	Fixed Internal
BT	2400~2483.5MHz														-0.31		Fixed Internal

3D Pattern

ANT 0_2400M(Frequency=2450M)

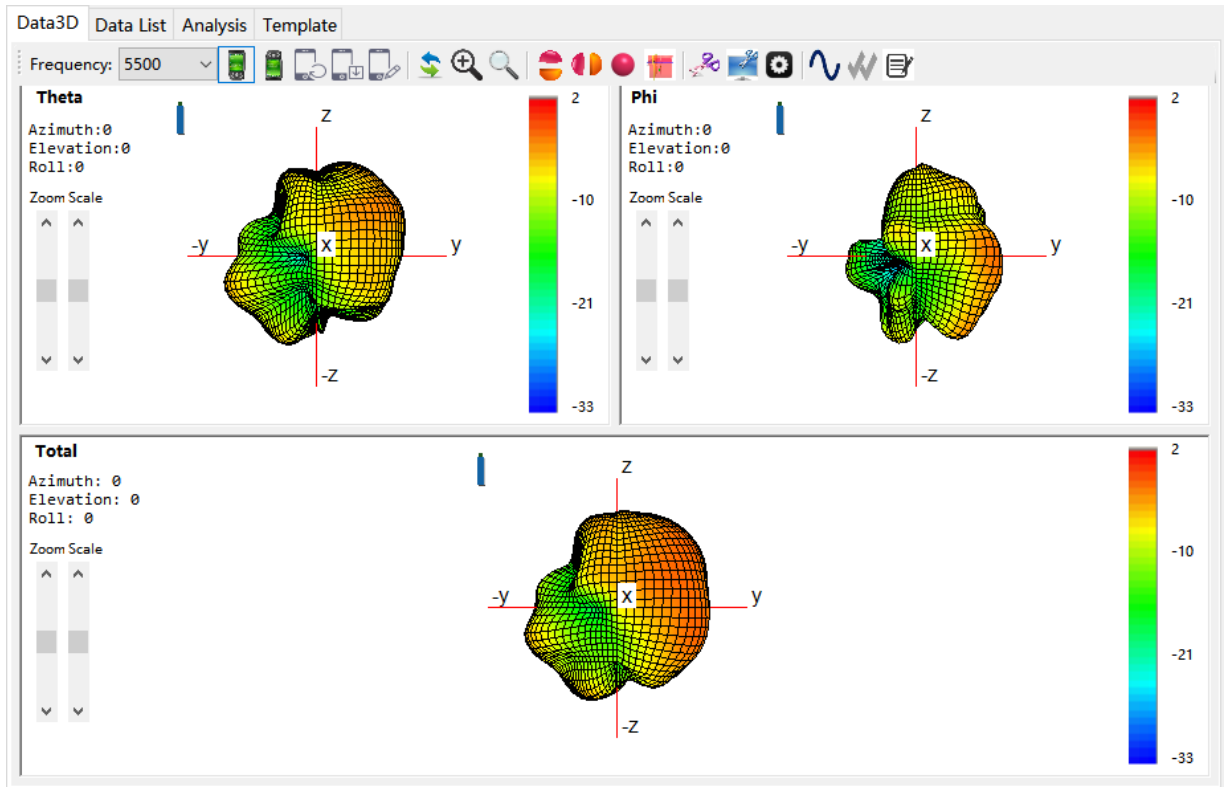


ANT 9_5000M(Frequency=5200M)

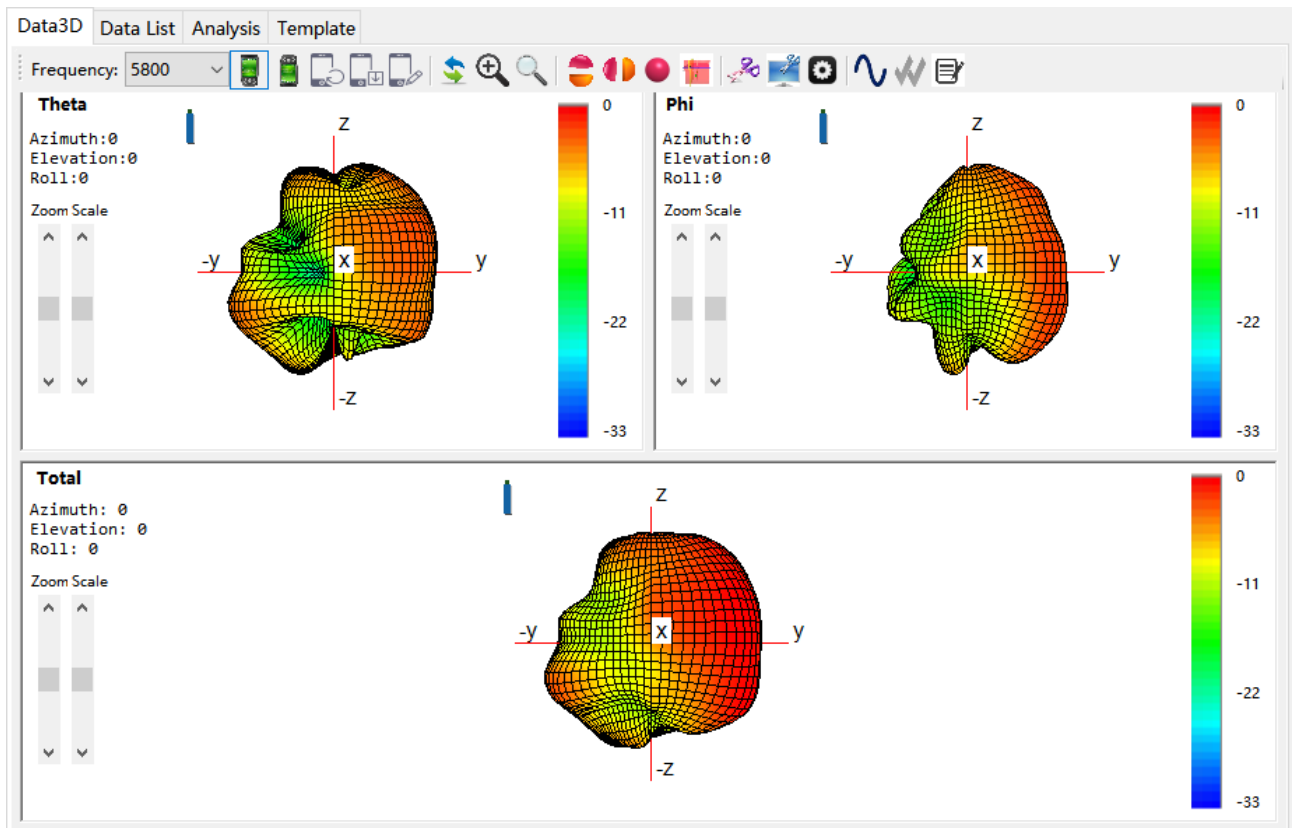


ANT

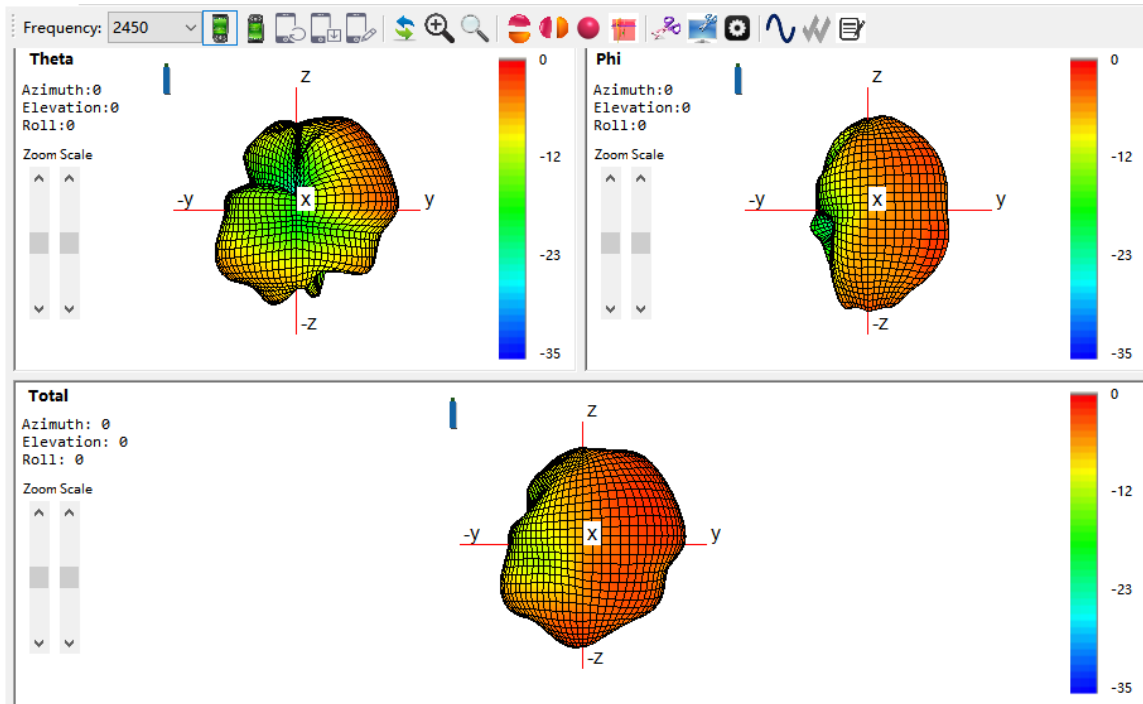
9_5000M(Frequency=5500M)



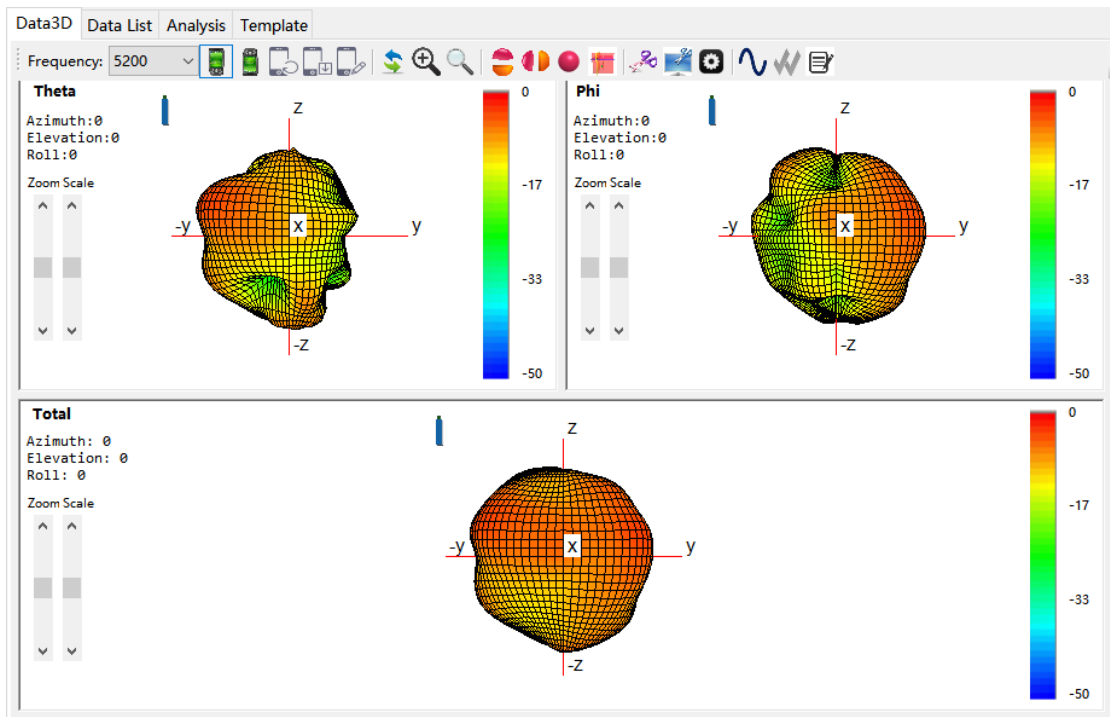
ANT 9_5000M(Frequency=5800M)



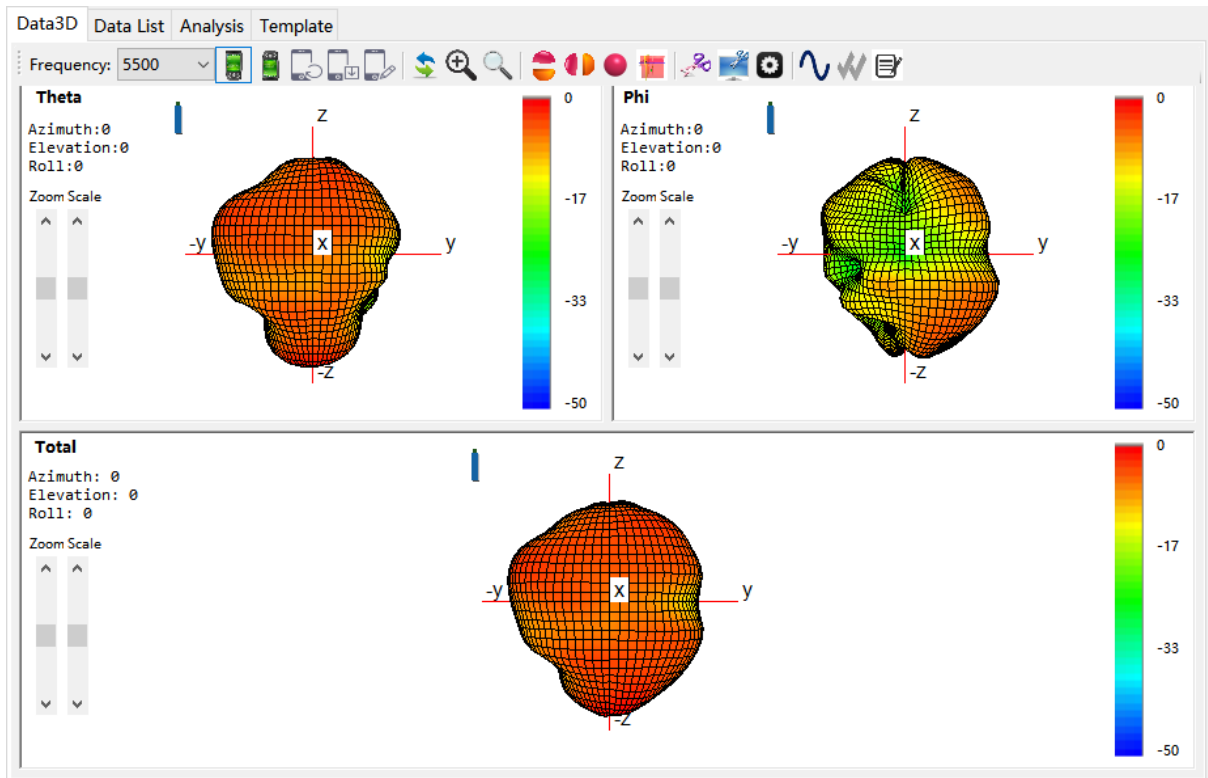
ANT 12_2400M(Frequency=2450M)



ANT 13_5000M(Frequency=5200M)



ANT 13_5000M(Frequency=5500M)



ANT 13_5000M(Frequency=5800M)

