



System Performance Check Data(Head)

Type: Phone measurement (Complete)
 Area scan resolution: dx=8mm,dy=8mm
 Zoom scan resolution: dx=8mm, dy=8mm, dz=5mm
 Date of measurement: 2014.11.21
 Measurement duration: 13 minutes 27 seconds

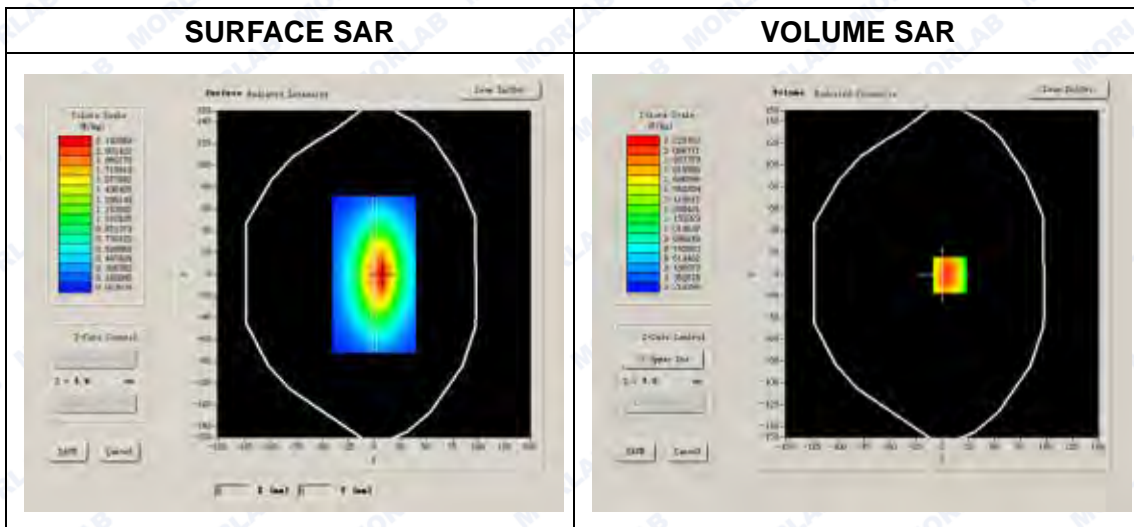
A. Experimental conditions.

Phantom File	surf_sam_plan.txt
Phantom	Flat Plane
Device Position	
Band	835MHz
Channels	
Signal	CW

B. SAR Measurement Results

Band SAR

Frequency (MHz)	835.000000
Relative permittivity (real part)	41.605877
Conductivity (S/m)	0.883495
Power drift (%)	0.800000
Ambient Temperature:	22.9°C
Liquid Temperature:	22.1°C
ConvF:	6.73
Crest factor:	1:1



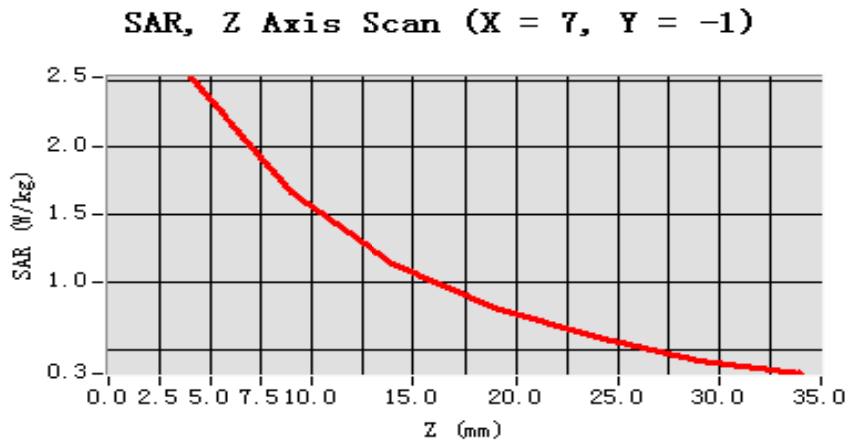


Maximum location: X=7.00, Y=-1.00

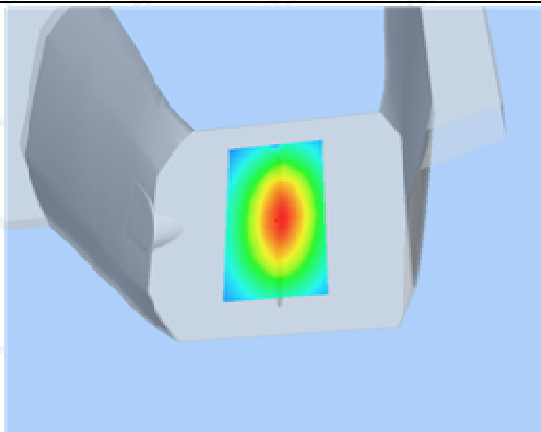
SAR 10g (W/Kg)	1.303492
SAR 1g (W/Kg)	2.406258

Z Axis Scan

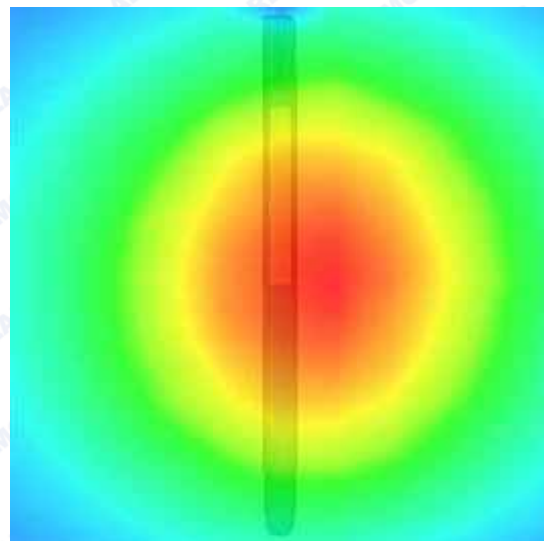
Z (mm)	0.00	4.00	9.00	14.00	19.00	24.00	29.00
SAR (W/Kg)	0.0000	2.5209	1.6629	1.1437	0.8075	0.5889	0.4143



3D scene shot



Hot spot position





System Performance Check Data(Body)

Type: Phone measurement (Complete)
Area scan resolution: dx=8mm,dy=8mm
Zoom scan resolution: dx=8mm, dy=8mm, dz=5mm
Date of measurement: 2014.11.21
Measurement duration: 13 minutes 30 seconds

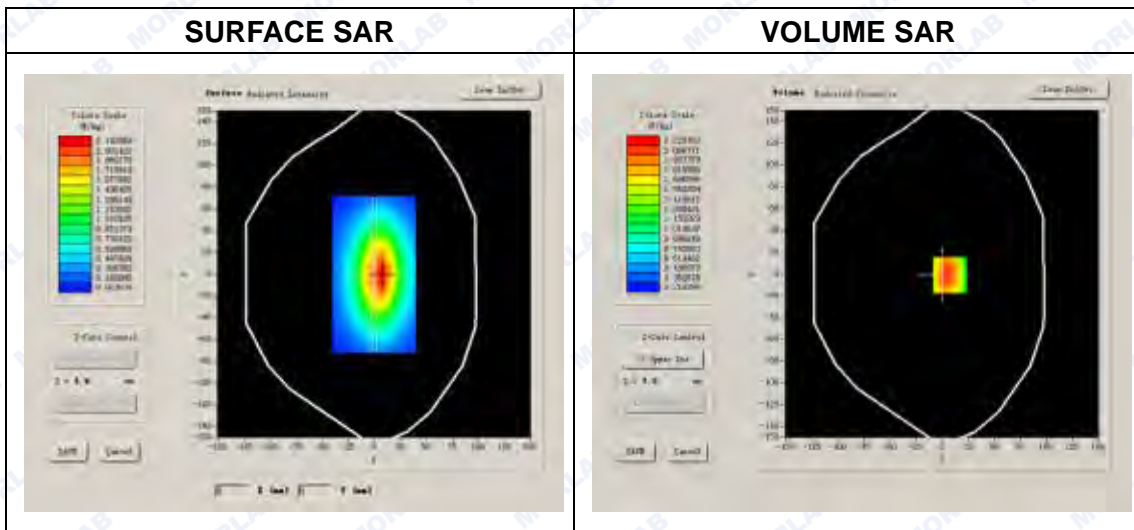
A. Experimental conditions.

Phantom File	surf_sam_plan.txt
Phantom	Flat Plane
Device Position	
Band	835MHz
Channels	
Signal	CW

B. SAR Measurement Results

Band SAR

Frequency (MHz)	835.000000
Relative permittivity (real part)	55.830247
Conductivity (S/m)	0.955874
Power drift (%)	-0.320000
Ambient Temperature:	22.9°C
Liquid Temperature:	22.1°C
ConvF:	6.99
Crest factor:	1:1



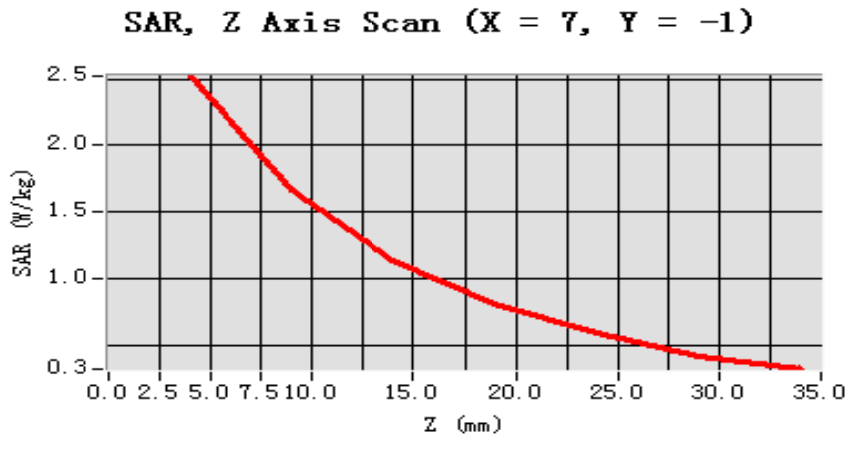


Maximum location: X=7.00, Y=-1.00

SAR 10g (W/Kg)	1.312642
SAR 1g (W/Kg)	2.481597

Z Axis Scan

Z (mm)	0.00	4.00	9.00	14.00	19.00	24.00	29.00
SAR (W/Kg)	0.0000	2.5209	1.6629	1.1437	0.8075	0.5889	0.4143



<p>3D scene shot</p>	<p>Hot spot position</p>
-----------------------------	---------------------------------



System Performance Check Data(Body)

Type: Phone measurement (Complete)

Area scan resolution: dx=8mm,dy=8mm

Zoom scan resolution: dx=8mm, dy=8mm, dz=5mm

Date of measurement: 2014.11.21

Measurement duration: 13 minutes 31 seconds

A. Experimental conditions.

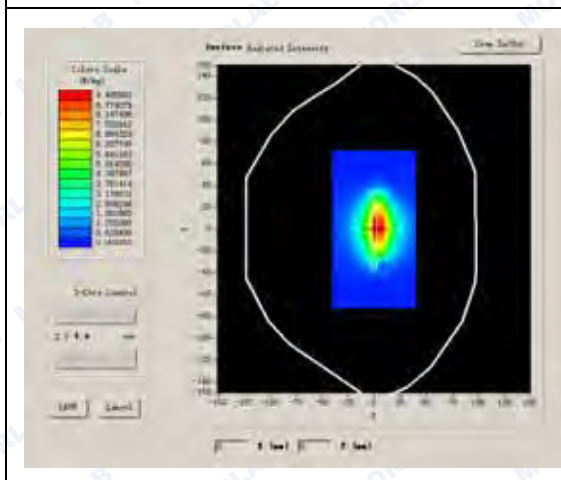
Phantom File	surf_sam_plan.txt
Phantom	Flat Plane
Device Position	
Band	1750MHz
Channels	
Signal	CW

B. SAR Measurement Results

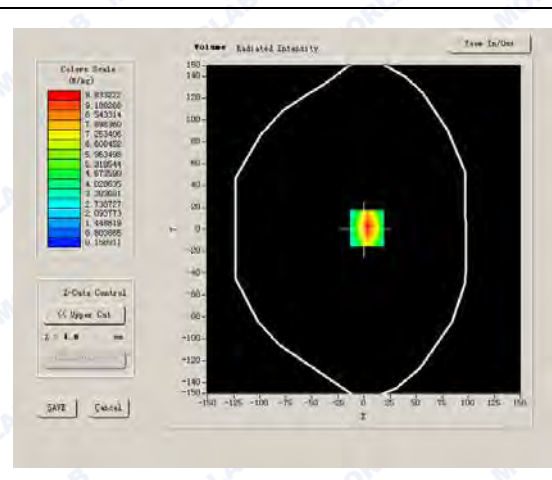
Band SAR

Frequency (MHz)	1750.000000
Relative permittivity (real part)	53.281493
Conductivity (S/m)	1.520837
Power drift (%)	1.040000
Ambient Temperature:	22.9°C
Liquid Temperature:	22.1°C
ConvF:	5.51
Crest factor:	1:1

SURFACE SAR



VOLUME SAR





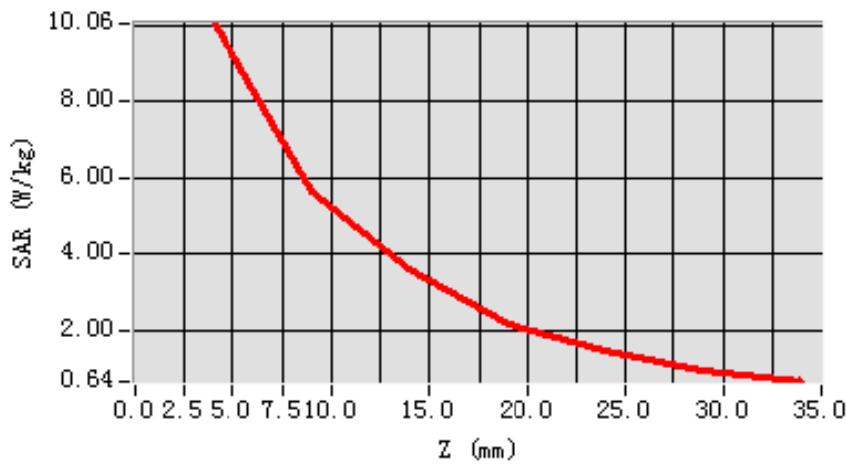
Maximum location: X=3.00, Y=1.00

SAR 10g (W/Kg)	4.953621
SAR 1g (W/Kg)	9.961264

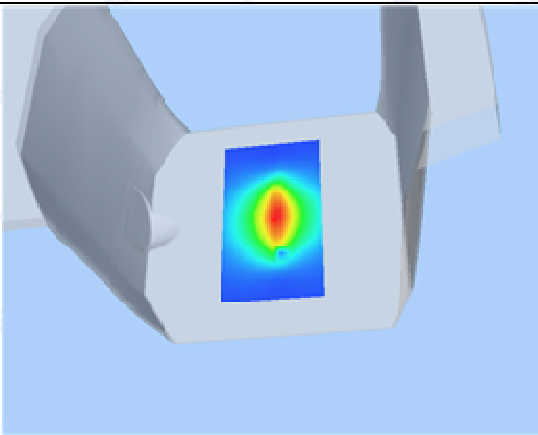
Z Axis Scan

Z (mm)	0.00	4.00	9.00	14.00	19.00	24.00	29.00
SAR (W/Kg)	0.0000	10.0621	5.6445	3.6226	2.1642	1.4521	0.9078

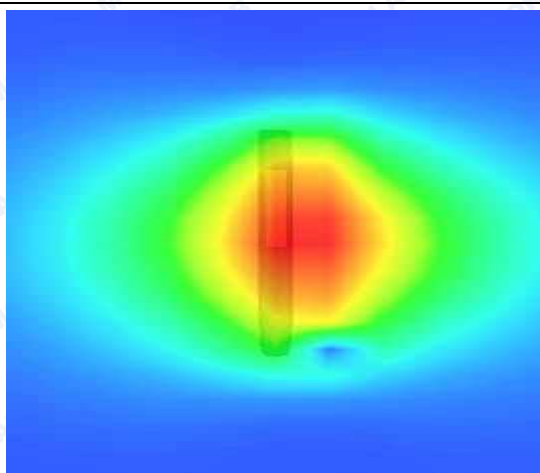
SAR, Z Axis Scan (X = 3, Y = 1)



3D scene shot



Hot spot position





System Performance Check Data(Head)

Type: Phone measurement (Complete)

Area scan resolution: dx=8mm,dy=8mm

Zoom scan resolution: dx=8mm, dy=8mm, dz=5mm

Date of measurement: 2014.11.22

Measurement duration: 13 minutes 27 seconds

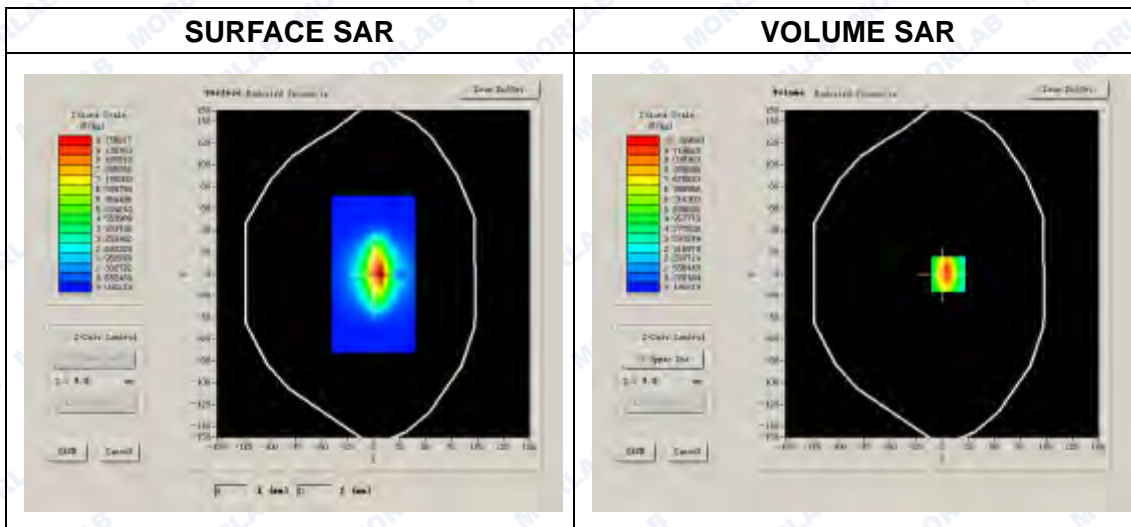
A. Experimental conditions.

Phantom File	surf_sam_plan.txt
Phantom	Flat Plane
Device Position	
Band	1900MHz
Channels	
Signal	CW

B. SAR Measurement Results

Band SAR

Frequency (MHz)	1900.000000
Relative permittivity (real part)	39.958437
Conductivity (S/m)	1.428857
Power drift (%)	0.520000
Ambient Temperature:	22.9°C
Liquid Temperature:	22.1°C
ConvF:	6.00
Crest factor:	1:1



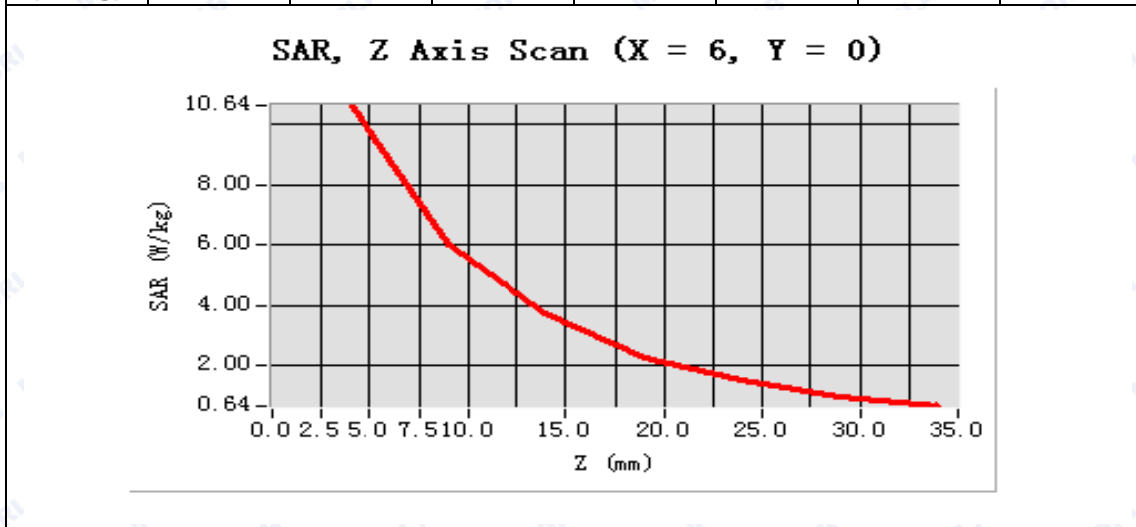


Maximum location: X=6.00, Y=0.00

SAR 10g (W/Kg)	6.363215
SAR 1g (W/Kg)	9.842034

Z Axis Scan

Z (mm)	0.00	4.00	9.00	14.00	19.00	24.00	29.00
SAR (W/Kg)	0.0000	10.6419	6.0043	3.7297	2.2606	1.5119	0.9792



<p>3D scene shot</p>	<p>Hot spot position</p>
-----------------------------	---------------------------------



System Performance Check Data(Body)

Type: Phone measurement (Complete)

Area scan resolution: dx=8mm,dy=8mm

Zoom scan resolution: dx=8mm, dy=8mm, dz=5mm

Date of measurement: 2014.11.22

Measurement duration: 13 minutes 26 seconds

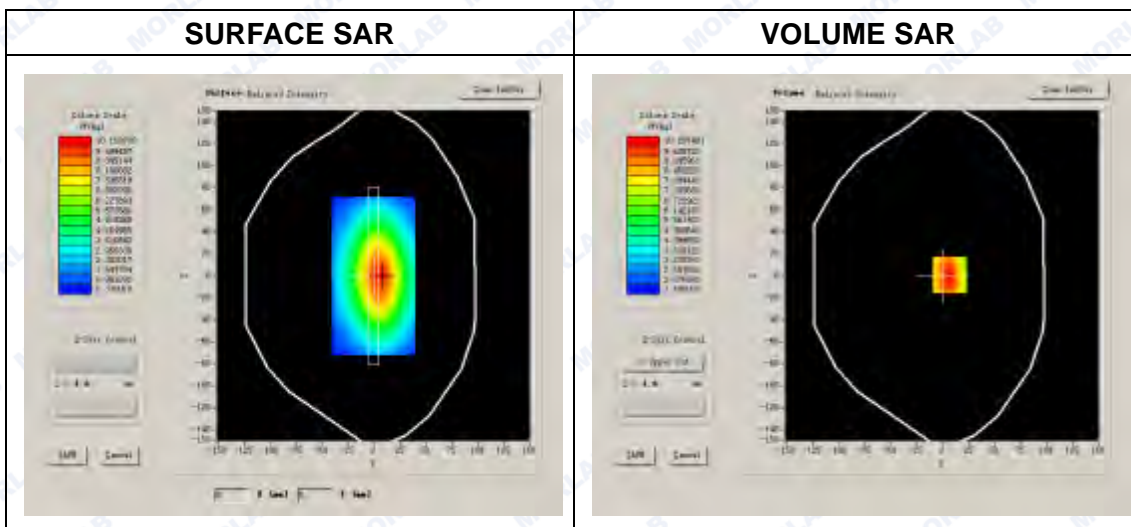
A. Experimental conditions.

Phantom File	surf_sam_plan.txt
Phantom	Flat Plane
Device Position	
Band	1900MHz
Channels	
Signal	CW

B. SAR Measurement Results

Band SAR

Frequency (MHz)	1900.000000
Relative permittivity (real part)	53.208584
Conductivity (S/m)	1.539548
Power drift (%)	-1.180000
Ambient Temperature:	22.9°C
Liquid Temperature:	22.1°C
ConvF:	6.17
Crest factor:	1:1



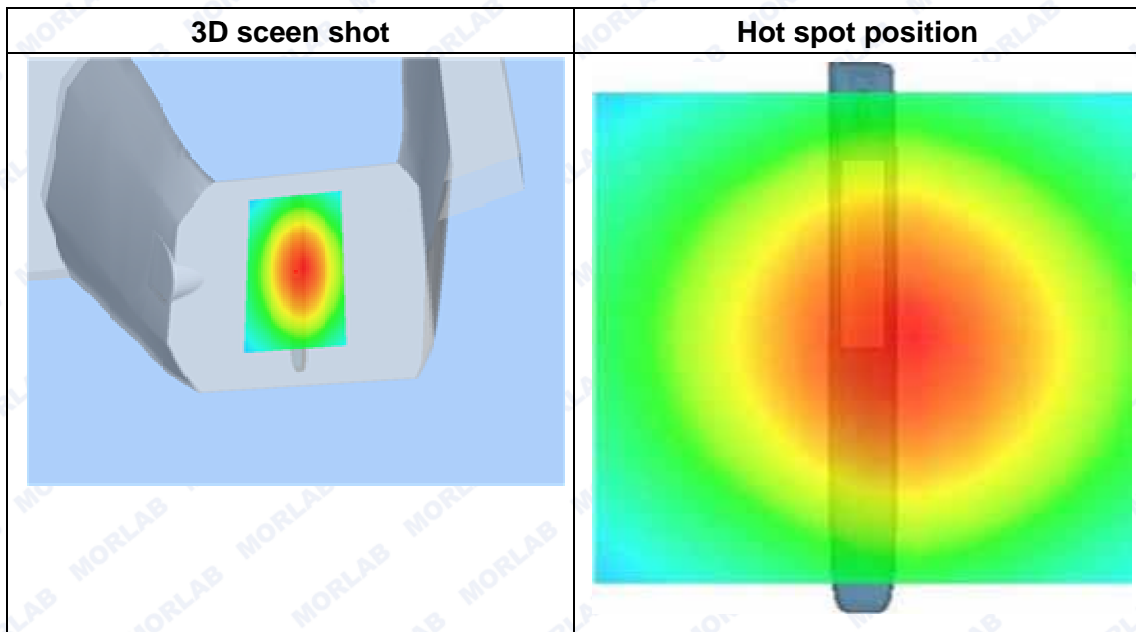
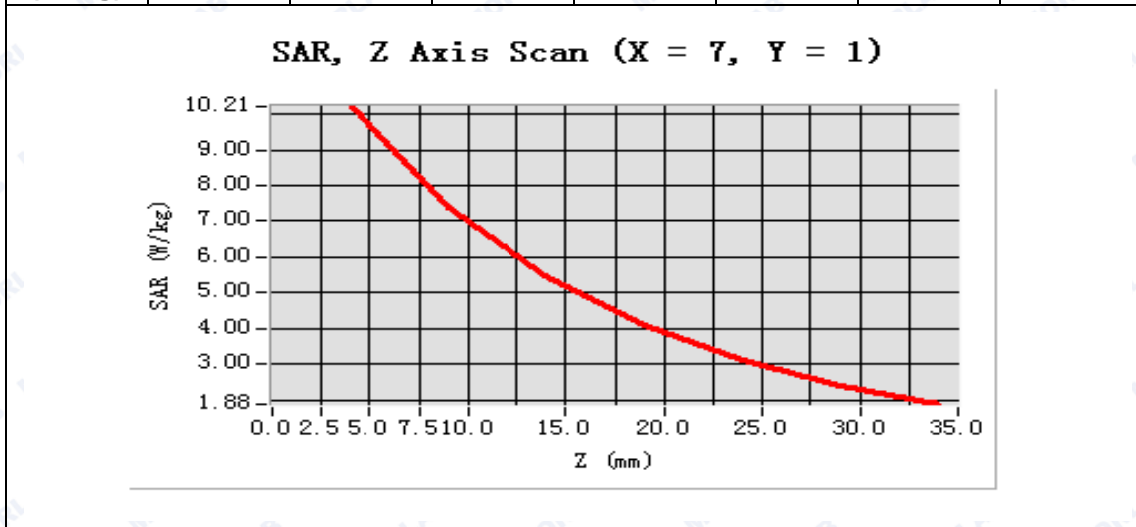


Maximum location: X=7.00, Y=1.00

SAR 10g (W/Kg)	6.760135
SAR 1g (W/Kg)	9.991854

Z Axis Scan

Z (mm)	0.00	4.00	9.00	14.00	19.00	24.00	29.00
SAR (W/Kg)	0.0000	10.2075	7.3996	5.4654	4.1101	3.1286	2.4128





System Performance Check Data(Head)

Type: Phone measurement (Complete)

Area scan resolution: dx=8mm,dy=8mm

Zoom scan resolution: dx=5mm, dy=5mm, dz=5mm

Date of measurement: 2014.11.22

Measurement duration: 13 minutes 27 seconds

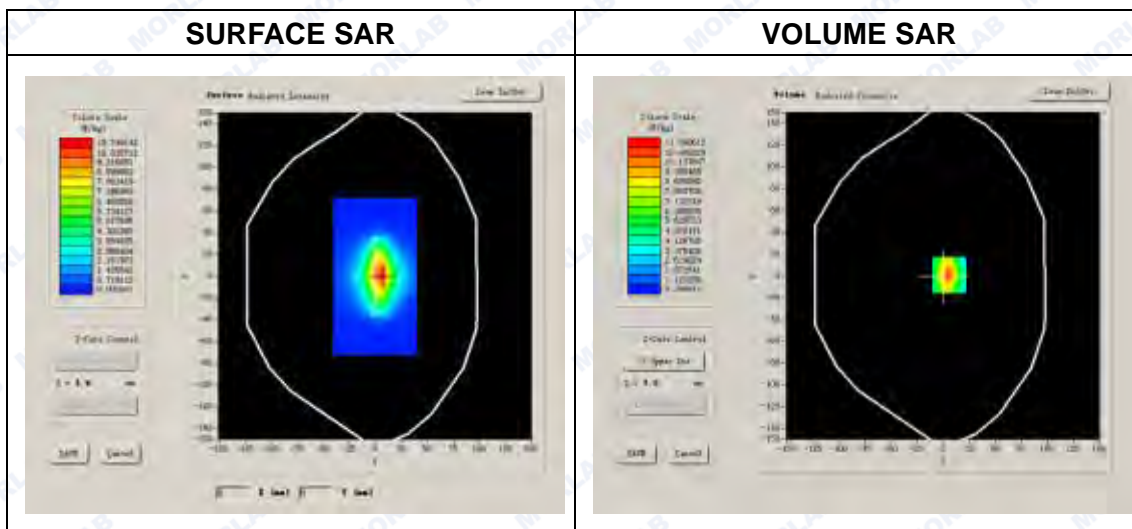
A. Experimental conditions.

Phantom File	surf_sam_plan.txt
Phantom	Validation plane
Device Position	
Band	2450MHz
Channels	
Signal	CW

B. SAR Measurement Results

Band SAR

Frequency (MHz)	2450.000000
Relative permittivity (real part)	39.310544
Conductivity (S/m)	1.815877
Power Drift (%)	0.800000
Ambient Temperature:	22.9°C
Liquid Temperature:	22.1°C
ConvF:	4.80
Crest factor:	1:1



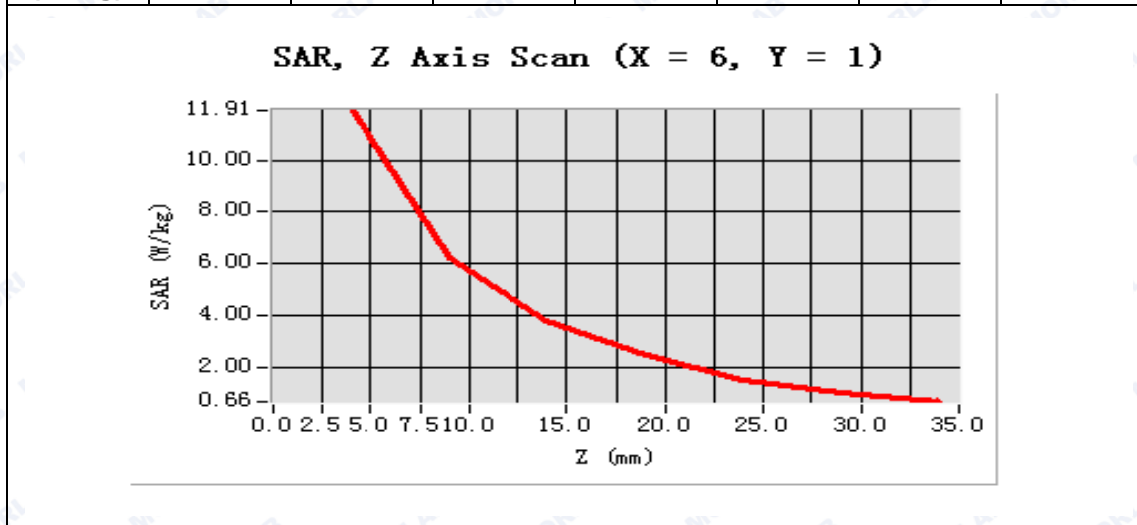


Maximum location: X=6.00, Y=1.00

SAR 10g (W/Kg)	7.680215
SAR 1g (W/Kg)	12.954361

Z Axis Scan

Z (mm)	0.00	4.00	9.00	14.00	19.00	24.00	29.00
SAR (W/Kg)	0.0000	11.9115	6.2096	3.8187	2.4504	1.5036	1.0219



<p>3D scene shot</p>	<p>Hot spot position</p>
-----------------------------	---------------------------------



System Performance Check Data(Body)

Type: Phone measurement (Complete)

Area scan resolution: dx=8mm,dy=8mm

Zoom scan resolution: dx=5mm, dy=5mm, dz=5mm

Date of measurement: 2014.11.22

Measurement duration: 13 minutes 27 seconds

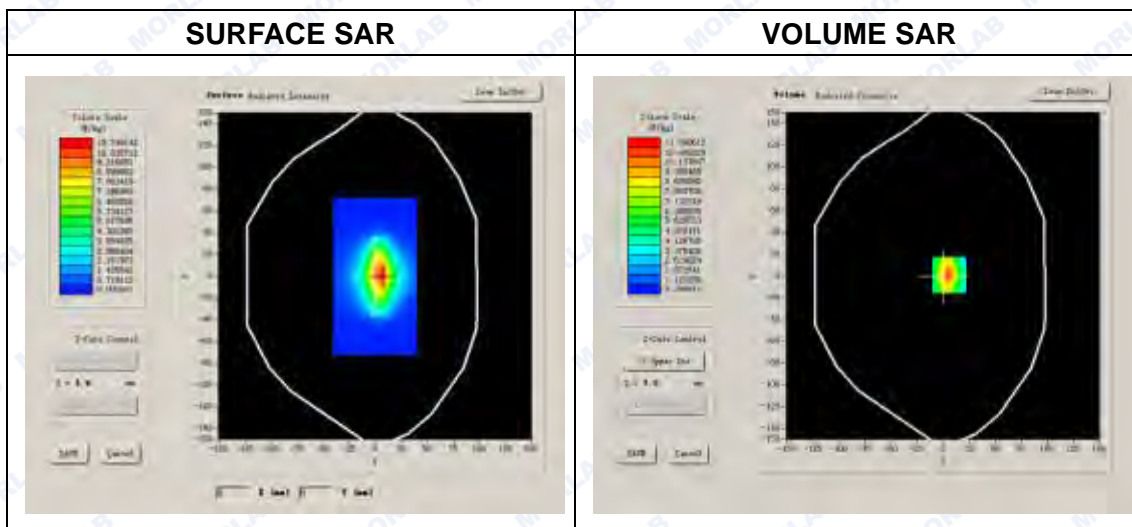
A. Experimental conditions.

Phantom File	surf_sam_plan.txt
Phantom	Validation plane
Device Position	
Band	2450MHz
Channels	
Signal	CW

B. SAR Measurement Results

Band SAR

Frequency (MHz)	2450.000000
Relative permittivity (real part)	52.790349
Conductivity (S/m)	1.916875
Power Drift (%)	1.030000
Ambient Temperature:	22.9°C
Liquid Temperature:	22.1°C
ConvF:	4.96
Crest factor:	1:1





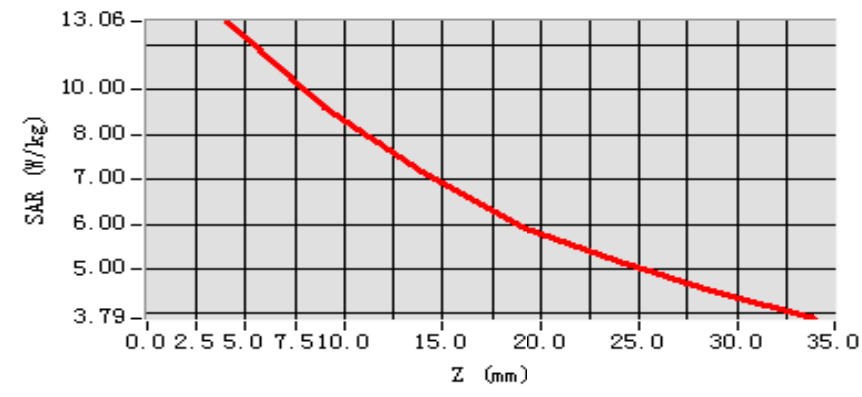
Maximum location: X=-1.00, Y=-50.00

SAR 10g (W/Kg)	7.213546
SAR 1g (W/Kg)	12.984145

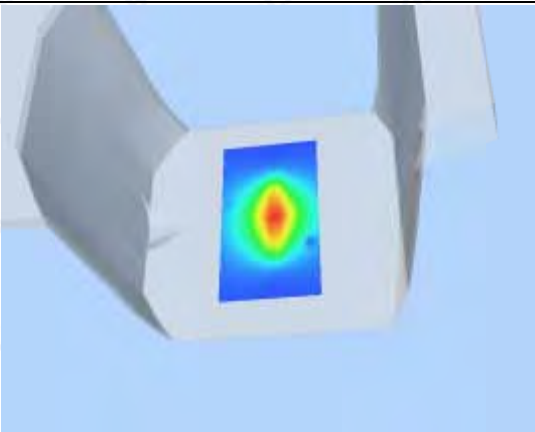
Z Axis Scan

Z (mm)	0.00	4.00	9.00	14.00	19.00
SAR (W/Kg)	0.0000	13.1279	6.8312	3.5991	1.3473

SAR, Z Axis Scan (X = -1, Y = -50)



3D scene shot



Hot spot position

