



Excellence in Compliance Testing

Certification Exhibit

FCC ID: R7PSSMM2TRP

FCC Rule Part: 15.247

ACS Project Number: 11-0444

Manufacturer: Landis+Gyr Technology, Inc.
Model: L+G Solid State Meter Module

Label Information

4

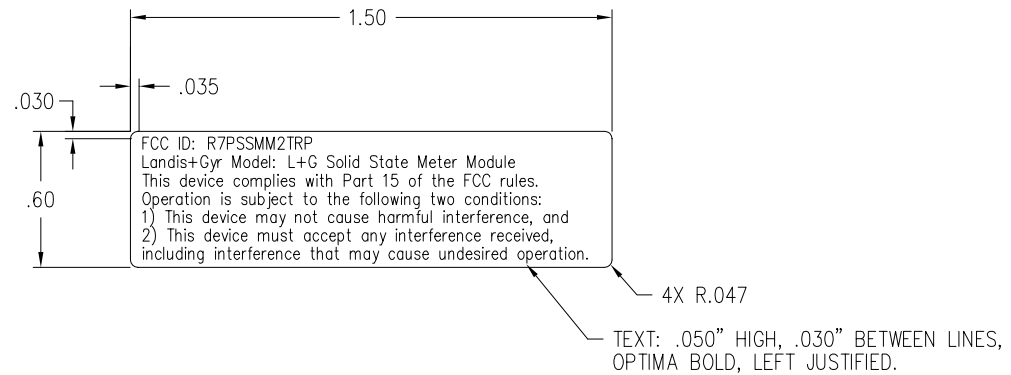
3

2

1

NOTES: UNLESS OTHERWISE SPECIFIED

- 1. MATERIAL: .002" THICK WHITE POLYESTER WITH 3M #400 TYPE ADHESIVE, 3M #7921 OR EQUIVALENT WITH PROTECTIVE BACKING.
- 2. TOP PRINT BLACK TEXT AND GREY #D179 BACKGROUND.
- 3. MATERIAL: LAMINATE .001" MATTE CLEAR POLYESTER, 3M #7732FL OR EQUIVALENT, TO FACE OF LABEL.
- 4. ANY NON SPECIFIED MATERIAL MUST BE APPROVED IN ADVANCE, IN WRITING, BY CELLNET ENGINEERING.
- 5. LABEL TO BE PRINTED AT LOCATION OF MANUFACTURER.



<p>DO NOT SCALE DRAWING</p> <p>UNLESS OTHERWISE SPECIFIED: DIMENSIONS ARE IN INCHES [MM] DIMENSIONS ARE AFTER FINISH IS APPLIED ANGLE TOLERANCE DOES NOT APPLY TO IMPLIED 90° ANGLES</p> <p>TOLERANCES ON:</p> <table border="1"> <tr> <th>DECIMAL</th> <th>FRACTION</th> <th>ANGLES</th> </tr> <tr> <td>1PL ±.1</td> <td>±1/64</td> <td>±1°</td> </tr> <tr> <td>2PL ±.02</td> <td></td> <td></td> </tr> <tr> <td>3PL ±.005</td> <td></td> <td></td> </tr> </table> <p>MUST BE FREE FROM FLASH AND BURRS. BREAK ALL SHARP EDGES. (I) DENOTES REFERENCE ONLY.</p>	DECIMAL	FRACTION	ANGLES	1PL ±.1	±1/64	±1°	2PL ±.02			3PL ±.005			<p>A/CAD</p>	<p>TITLE: LABEL, FCC PWB, METER MODULE, SOLID STATE, L+G, TRP</p>			
	DECIMAL	FRACTION	ANGLES														
	1PL ±.1	±1/64	±1°														
2PL ±.02																	
3PL ±.005																	
<p>THIRD ANGLE PROJECTION</p>	<p>APPROVED BY: D. FINCANNON</p>	<p>DATED: 11/14/12</p>	<p>SIZE: B</p>														
<p>DRAWN BY: R. ADAMKIEWICZ</p>	<p>DATED: 11/14/12</p>	<p>SHEET: 1 OF 1</p>															
<p>LANDIS+GYR CONFIDENTIAL INFORMATION: THIS DOCUMENT CONTAINS INFORMATION PROPRIETARY TO LANDIS + GYR FAMILY OF COMPANIES, (WHICH INCLUDES THE COMPANIES FORMERLY KNOWN AS HUNT AND CELLNET) ANY USE OR DISCLOSURE WITHOUT WRITTEN PERMISSION IS PROHIBITED.</p>		<p>DRAWING NO. 23-1349</p>		<p>REVISION: AB</p>													

4

3

2

1

4

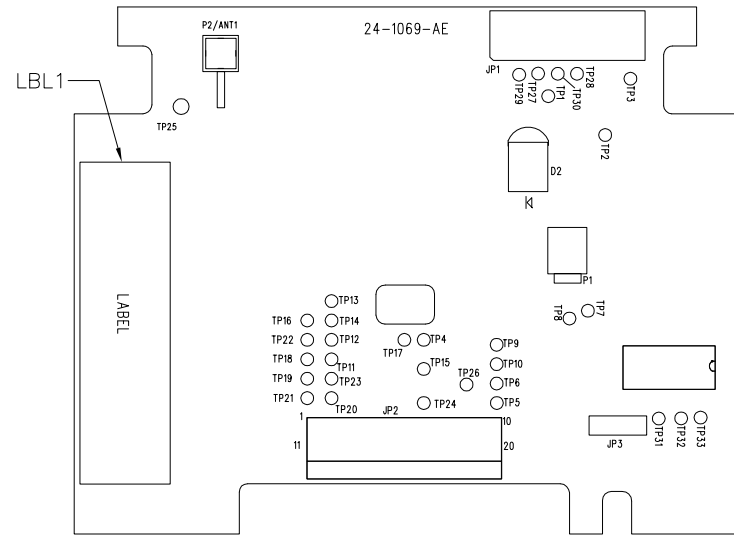
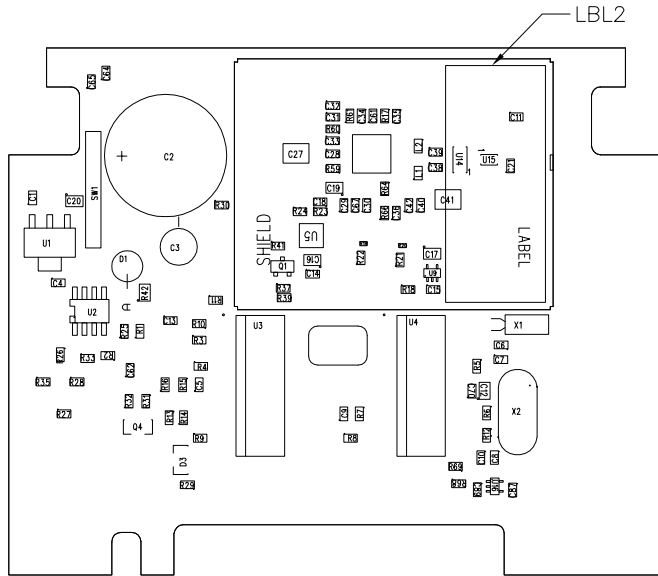
3

2

1

NOTES:

- 1. THIS ASSEMBLY SHALL BE IN ACCORDANCE WITH DOCUMENT NUMBER 95-1062. SURFACES SHALL BE CONSIDERED "CLASS C" SURFACES UNLESS OTHERWISE SPECIFIED.
- 2. ONLY APPROVED SOURCES PER BILL OF MATERIAL TO BE USED.
- 3. THIS ASSEMBLY TO BE BUILT IN THE ORDER OF PRECEDENCE: THIS DRAWING SPECIFICATION, THEN THE IPC-A-610 LATEST REVISION CLASS 2.
- 4. DISREGARD SECTION 12.4 (HIGH VOLTAGE -THROUGH HOLE CONNECTIONS) FOR IPC-A-610 LATEST REVISION.
- 5. THIS ASSEMBLY DRAWING MAY BE USED ON MORE THAN ONE BOARD ASSEMBLY. SEE CURRENT BOM TO DETERMINE IF PARTS ARE POPULATED.



DO NOT SCALE DRAWING

UNLESS OTHERWISE SPECIFIED:
 DIMENSIONS ARE IN INCHES [MM]
 DIMENSIONS ARE AFTER FINISH IS APPLIED
 ANGLE TOLERANCE DOES NOT APPLY TO
 IMPLIED 90° ANGLES

TOLERANCES ON:

DECIMAL	FRACTION	ANGLES
1PL ± .1	± 1/64	± 1°
2PL ± .02		
3PL ± .005		

MUST BE FREE FROM FLASH AND BURRS.
 BREAK ALL SHARP EDGES.
 (I) DENOTES REFERENCE ONLY.



TITLE: PCBA, GENERATION 2, MM, SOLID STATE, L&G		
APPROVED BY: D. FINCANNON	DATED: 10/11/11	SIZE: B
DRAWN BY: P. SPOKAS	DATED: 10/11/11	SHEET: 1 OF 1

LANDIS+GYR CONFIDENTIAL INFORMATION:
 THIS DOCUMENT CONTAINS INFORMATION PROPRIETARY TO LANDIS + GYR FAMILY OF COMPANIES, (WHICH INCLUDES THE COMPANIES FORMERLY KNOWN AS HUNT AND CELLNET) ANY USE OR DISCLOSURE WITHOUT WRITTEN PERMISSION IS PROHIBITED.

DRAWING NO. 73-1088	REVISION: AD
-------------------------------	------------------------

4

3

2

1