



Excellence in Compliance Testing

Certification Exhibit

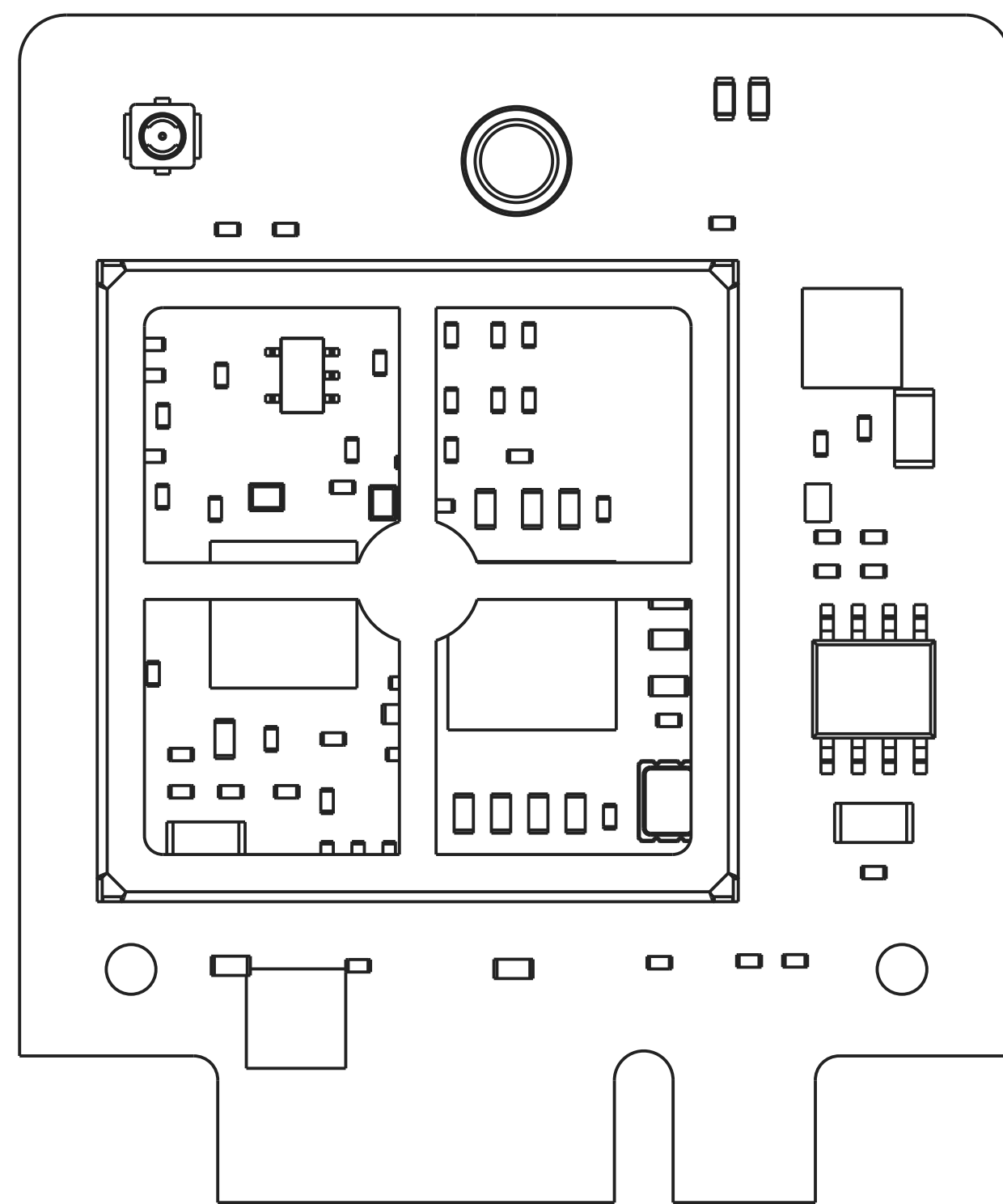
**FCC ID: R7PNG0R1S3
IC: 5294A-NG0R1S3**

**FCC Rule Part: 15.247
IC Radio Standards Specification: RSS-247**

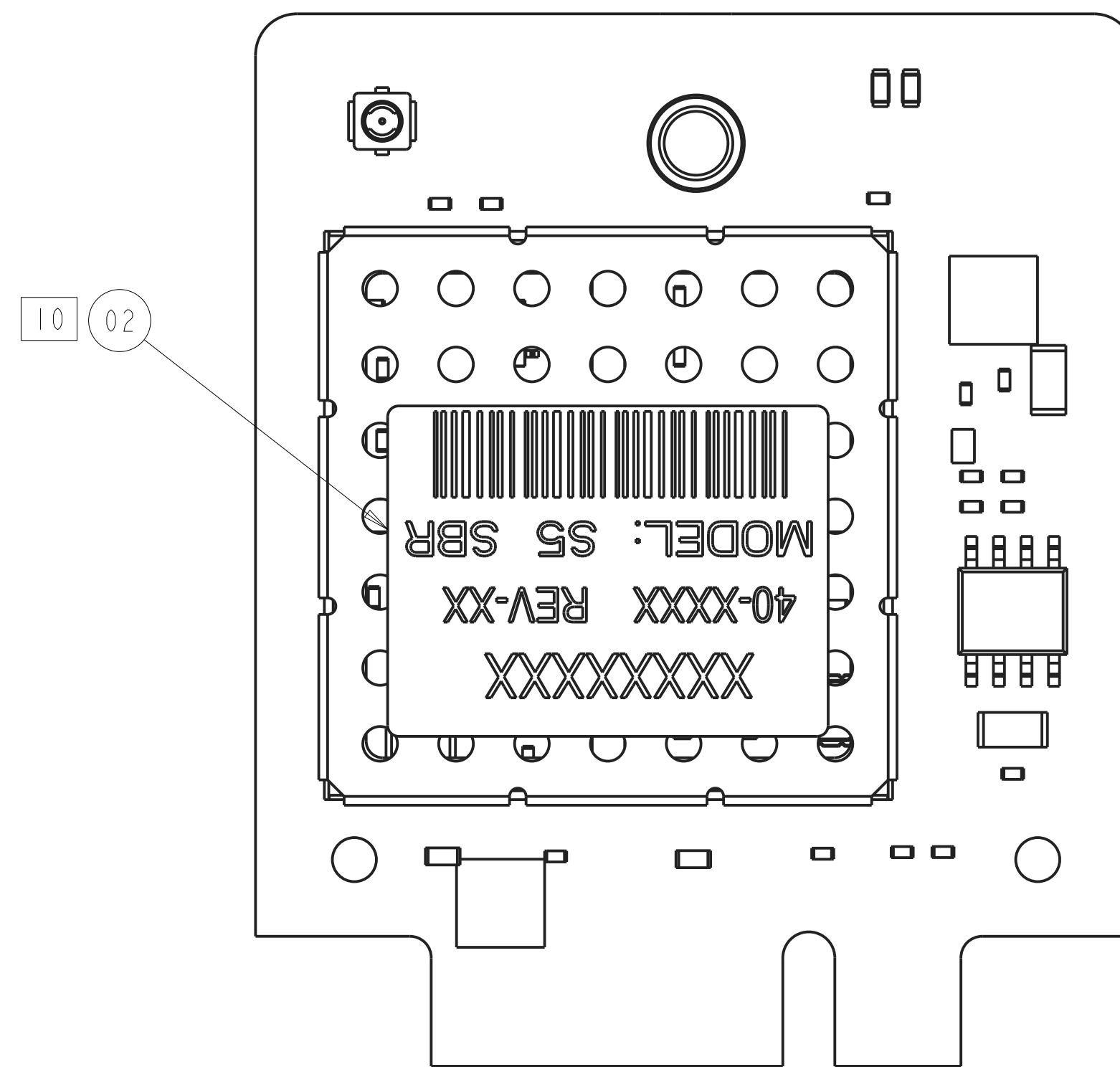
ACS Project Number: 15-0460

**Manufacturer: Landis+Gyr Technology, Inc.
Model: S5 SBR**

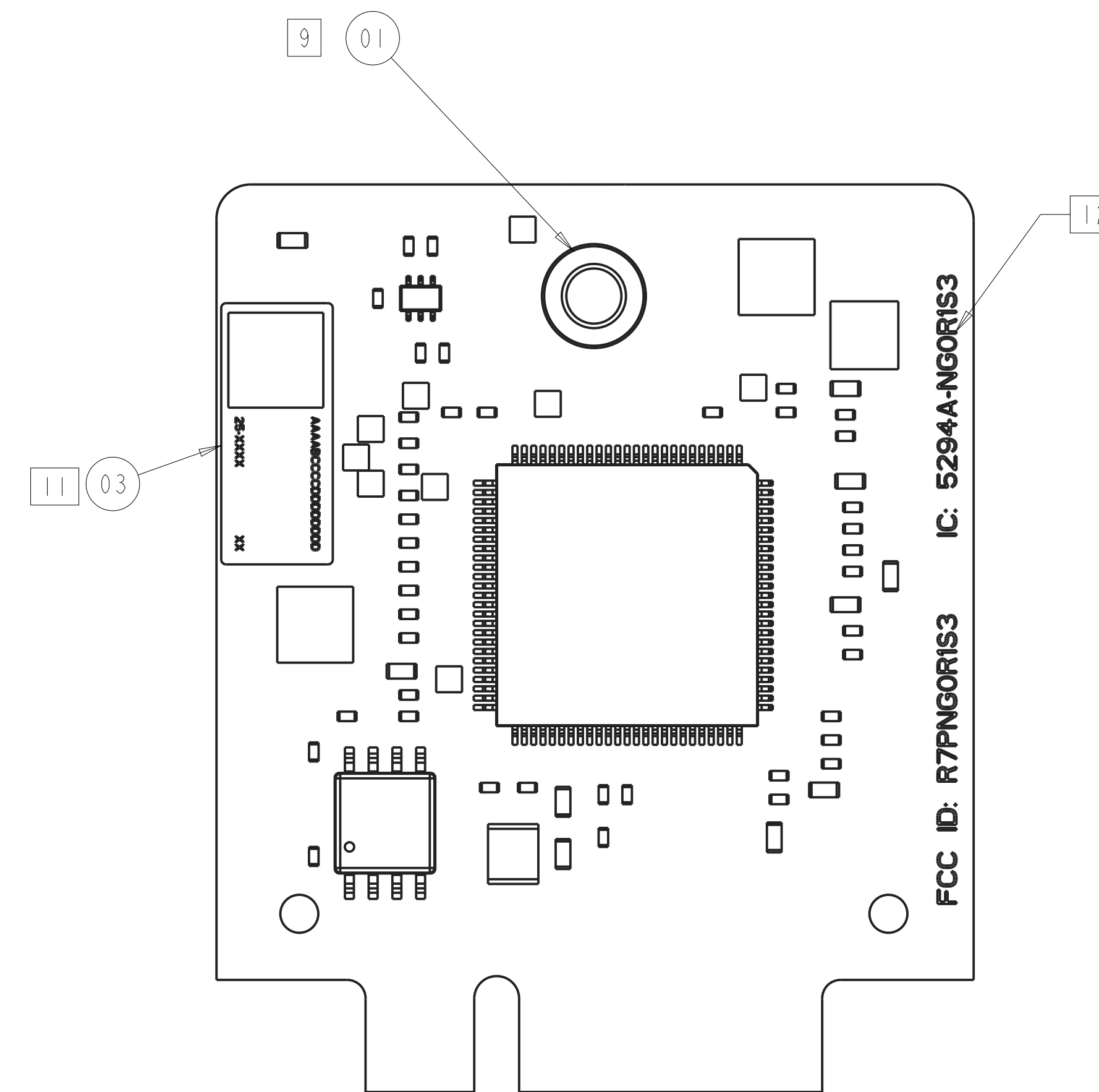
Label Information



TOP VIEW
SHIELD REMOVED FOR CLARITY



TOP VIEW



BOTTOM VIEW

NOTES:

1. THIS ASSEMBLY SHALL BE IN ACCORDANCE WITH DOCUMENT NUMBER 95-1062. SURFACES SHALL BE CONSIDERED "CLASS D" SURFACES UNLESS OTHERWISE SPECIFIED.
2. ONLY APPROVED SOURCES PER BILL OF MATERIAL TO BE USED.
3. THIS ASSEMBLY TO BE BUILT IN THE ORDER OF PRECEDENCE: THIS DRAWING SPECIFICATION, THEN THE IPC-A-610 LATEST REVISION CLASS 2.
4. PRIOR TO ATTACHING LABELS OR ADHESIVE PARTS, CLEAN DESIGNATED SURFACE AREAS USING DENATURED ALCOHOL.
5. ALL SOLDER PROCESSES SHOULD USE LEAD-FREE SOLDER.
6. BOARD TO BE ASSEMBLED WITH NO-CLEAN FLUX, NO WASHING AFTER ASSEMBLY.
7. SEE BOM FOR NON-POPULATED COMPONENTS.
8. IF RF SHIELD COVER IS REMOVED AFTER INSTALLED, DO NOT RE-USE THE COVER.

9. COMPONENT 01 TO BE INSTALLED FROM THE NEAR SIDE OF THE BOTTOM VIEW.

10. LABEL (ITEM 02) SECTION "A" TO BE LOCATED "APPROXIMATELY AS SHOWN" SECTIONS B, AND C TO BE SHIPPED WITH PRODUCT.

11. LABEL (ITEM 03) SHALL NOT COVER ANY PORTION OF COMPONENTS, OR TEST POINTS, AND TO BE LOCATED "APPROXIMATELY AS SHOWN".

12. INFORMATION IN SILK SCREEN.

DO NOT SCALE DRAWING
UNLESS OTHERWISE SPECIFIED:
DIMENSIONS ARE IN INCHES (MM)
DIMENSIONS ARE AFTER FINISH IS APPLIED
ANGLE TOLERANCE DOES NOT APPLY TO
IMPLIED 90° ANGLES
TOLERANCES ON:
DECIMAL FRACTION ANGLES
1PL ± .1 ±1/64 ±1°
2PL ± .02
3PL ± .005
MUST BE FREE FROM FLASH AND BURRS.
BREAK ALL SHARP EDGES.
(1) DENOTES REFERENCE ONLY.



TITLE: PCBA W/TOOLING HOLES, S5 SBR

APPROVED BY: M. BERKOBIN DATED: 12/11/15 SIZE: D

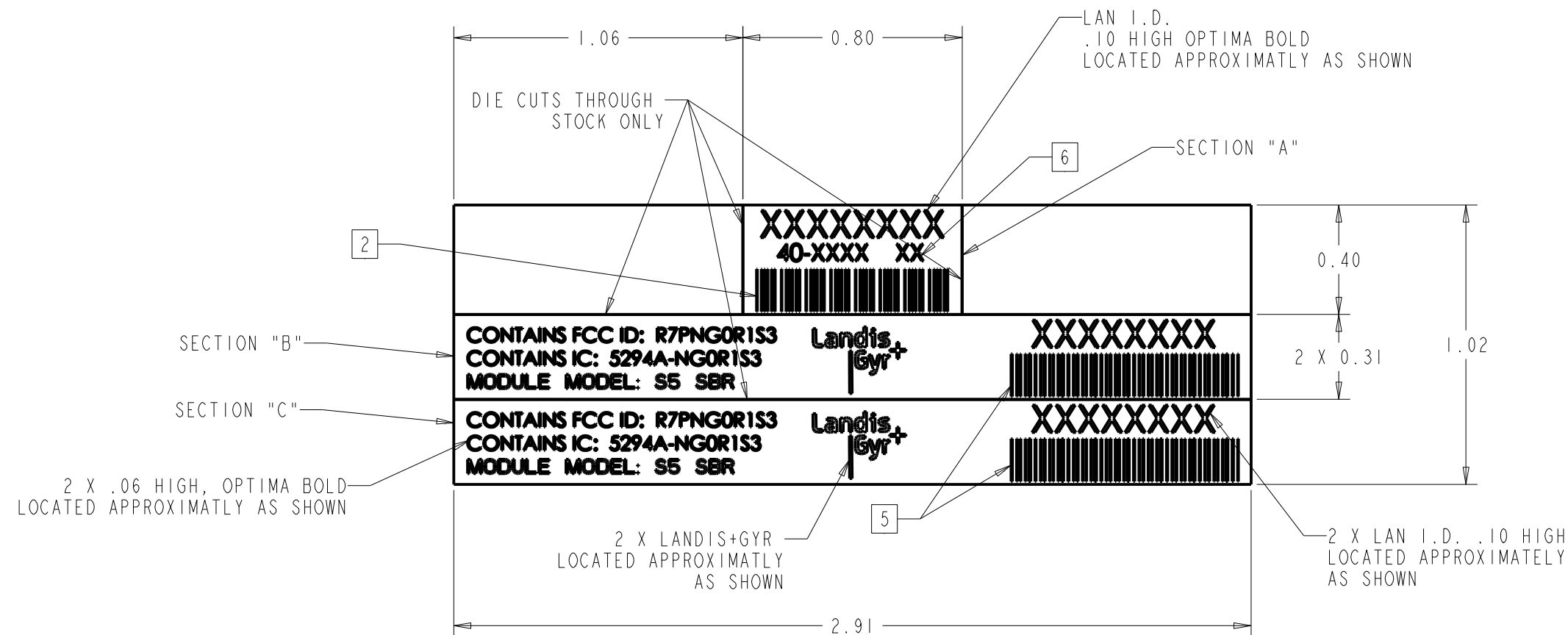
THIRD ANGLE PROJECTION DRAWN BY: S. DAO DATED: 12/11/15 SHEET: 1 OF 1

LANDIS+GYR CONFIDENTIAL INFORMATION:
THIS DOCUMENT CONTAINS INFORMATION PROPRIETARY TO LANDIS + GYR FAMILY OF COMPANIES, WHICH INCLUDES THE COMPANIES FORMERLY KNOWN AS HUNT AND CELLNET) ANY USE OR DISCLOSURE WITHOUT WRITTEN PERMISSION IS PROHIBITED.

DRAWING NO. 73-2552 REVISION: AA

NOTES:

- 1. FINISH PRINT U.V. PERMANENT BLACK INK.
- 2. BARCODE 39 , 9.4 CHARACTERS PER INCH LOCATED APPROXIMATELY AS SHOWN. INDIVIDUALLY SPECIFIED PER LABEL SET.
- 3. LABEL FONT SHOWN IS USED TO DEFINE TEXT CONTENT ONLY. USE FONT SPECIFIED FOR ACTUAL LABELS.
- 4. ALL LINES OF TEXT SHALL HAVE .02 INCHES MINIMUM LINE TO LINE TO LABEL EDGE SPACING
- 5. BARCODE 128 LOCATED APPROXIMATELY WHERE SHOWN. INDIVIDUALLY SPECIFIED PER LABEL SET.
- 6. 40-XXXX DENOTES SUBASSEMBLY PART NUMBER. XX DENOTES LATEST REVISION.
- 7. THIS LABEL SHALL BE IN ACCORDANCE WITH DOCUMENT NUMBERS 95-1067.



DO NOT SCALE DRAWING		TITLE: LABEL, FCC ID + LAN ID S5 SBR	
UNLESS OTHERWISE SPECIFIED: DIMENSIONS ARE IN INCHES (MM) DIMENSIONS ARE AFTER FINISH IS APPLIED ANGLE TOLERANCE DOES NOT APPLY TO IMPLIED 90° ANGLES TOLERANCES ON:		APPROVED BY: M. BERKOBIN	DATED: 11/04/15
DECIMAL	FRACTION	ANGLES	SIZE: C
1PL ± .1	±1/64	±1°	SHEET: 1 OF 1
2PL ± .02			REVISION:
3PL ± .005			AA
MUST BE FREE FROM FLASH AND BURRS. BREAK ALL SHARP EDGES. () DENOTES REFERENCE ONLY.		DRAWING NO. 23-1391	
LANDIS+GYR CONFIDENTIAL INFORMATION: THIS DOCUMENT CONTAINS INFORMATION PROPRIETARY TO LANDIS + GYR FAMILY OF COMPANIES, (WHICH INCLUDES THE COMPANIES FORMERLY KNOWN AS HUNT AND CELLNET) ANY USE OR DISCLOSURE WITHOUT WRITTEN PERMISSION IS PROHIBITED.			