

**ELECTROMAGNETIC EMISSIONS COMPLIANCE REPORT
INTENTIONAL RADIATOR CERTIFICATION TO
FCC PART 90 & RSS-119 REQUIREMENTS**

OF

PORTABLE REPEATER

MODEL No.: TR-50U

BRAND NAME: HYT

FOR

FCC ID: R74TR-50U

IC: 5465A-TR50U

REPORT NO: LW-SZ06060024

ISSUE DATE: June 9, 2006

Prepared for

**SHENZHEN HYT SCIENCE & TECHNOLOGY CO., LTD.
HYT TOWER, SHENZHEN HI-TECH INDUSTRIAL PARK NORTH,
BEIHUAN RD., NANSHAN DISTRICT,
SHENZHEN, P.R.C.**

Prepared by

LONGWAY(SHENZHEN) CERTIFICATION SERVICE CO., LTD.

d.b.a.

**LONGWAY(SHENZHEN) CERTIFICATION SERVICE CO., LTD.
NO. 1501, B BUILDING, EAST GARDEN, SHENNAN ROAD
#12038, NANSHAN DISTRICT, SHENZHEN,
GUANGDONG, CHINA**

TEL: 86-755-86174774

FAX: 86-755-86174774

VERIFICATION OF COMPLIANCE

Applicant:	SHENZHEN HYT SCIENCE&TECHNOLOGY CO., LTD. HYT Tower, Shenzhen Hi-Tech Industrial Park North, Beihuan Rd., Nanshan District, Shenzhen, P.R.C.
Manufacturer	SHENZHEN HYT SCIENCE&TECHNOLOGY CO., LTD. HYT Tower, Shenzhen Hi-Tech Industrial Park North, Beihuan Rd., Nanshan District, Shenzhen, P.R.C.
Product Description:	PORTABLE REPEATER
Brand Name:	HYT
Model Number:	TR-50U
Serial Number:	N/A
File Number:	LW-SZ06060024
Date of Test:	May 25,2006 ~ June 8, 2006

We hereby certify that:

The above equipment was tested by LONGWAY(SHENZHEN) CERTIFICATION SERVICE CO., LTD. The data evaluation, test procedures, and equipment configurations shown in this report were made in accordance with the procedures given in ANSI C 63.4:2003 and TIA/EIA 603. The sample tested as described in this report is in compliance with the FCC Rules Part 90 and RSS-119.

The test results of this report relate only to the tested sample identified in this report.

Reviewed and Approved by:



King Chen / Q.A. Manager
LONGWAY(SHENZHEN) CERTIFICATION
SERVICE CO., LTD.

Table of Contents

1. GENERAL INFORMATION	4
2. SYSTEM TEST CONFIGURATION	6
3. SUMMARY OF TEST RESULTS	9
4. DESCRIPTION OF TEST MODES	9
5. CONDUCTED LIMITS	10
6. FREQUENCY TOLERANCE	13
7. EMISSION BANDWIDTH	18
8. UNWANTED RADIATION	22
9. MODULATION CHARACTERISTICS	28
10. MAXIMUM TRANSMITTER POWRE	34
11. TRANSMITTER FREQUENCY BEHAVIOUR	36

APPENDIX I

PHOTOGRAPHS OF SETUP	40
----------------------	----

APPENDIX II

EXTERNAL VIEW OF EUT	42
----------------------	----

APPENDIX III

INTERNAL VIEW OF EUT	49
----------------------	----

1. GENERAL INFORMATION**1.1 Product Description**

The SHENZHEN HYT SCIENCE&TECHNOLOGY CO., LTD., Model: TR-50U (referred to as the EUT in this report). The EUT is a single channel Portable Repeater designed for voice communication only. It is designed by way of utilizing the FM modulation achieves the system operating.

A major technical descriptions of EUT is described as following:

- A). Frequency Tolerance: 0.00011% (0.00025% for 12.5 KHz) 0.00008% (0.0005% for 25 KHz)
- B). Communication Type: Voice/Tone only
- C). Modulation: FM
- D). Emission type: F3E
- E). Emission designator: 11KF3E (2M+2D, M=3, D=2.5, Necessary Bandwidth =11 KHz for 12.5 KHz)
16KF3E (2M+2D,M=3, D=5 ,Necessary Bandwidth=16 KHz for 25 KHz)
- F). Emission Bandwidth: 5.88 KHz (Limit: 11.25 KHz for 12.5 KHz channel separation)
10.9 KHz (Limit: 20 KHz for 25 KHz channel Separation)
- G).Peak Frequency Deviation: 2.062 KHz for 12.5 KHz Channel Separation (Limit< ± 2.5 KHz)
4.164 KHz for 25 KHz Channel Separation (Limit< ± 5 KHz)
- H).Audio Frequency Response: 2.5 KHz (Limit<3.125 KHz)
- I). Maximum Transmitter Power: 4.710 W for 12.5 KHz Channel Separation
4.797 W for 25 KHz Channel Separation
- J). Output power Modification: Fixed can't be changed
- K). Unwanted Radiation:

For 12.5 KHz Channel Separation:

- 1). At least 30 (Limit 0 dB) On any frequency removed from the center of the authorized bandwidth f_0 to 5.625 KHz removed from f_0 : Zero dB
- 2). At least 30~80 (Limit 20~70 dB) On any frequency removed from the center of the authorized bandwidth by a displacement frequency (f_d in KHz) f_0 of more than 5.625 KHz but no more than 12.5 KHz: At least 7.27($f_d-2.88$ KHz)dB
- 3). At least 80 (Limit 57 dB) On any frequency removed from the center of the authorized bandwidth by a displacement frequency (f_d in KHz) f_0 of more than 12.5 KHz: At least 50+10 log(P) dB or 70 dB, which ever is lesser attenuation.

For 25 KHz Channel Separation:

- 1), At least 30 (Limit 25 dB)On any frequency removed from the assigned frequency by more than 50 percent, but no more than 100 percent of the authorized bandwidth: At least 25 dB.
- 2), At least 60 (Limit 35 dB)On any frequency removed from the assigned frequency by more than 100 percent, but no more than 250 percent of the authorized bandwidth: At least 35 dB.
- 3), At least 80 (Limit 50 dB)On any frequency removed from the assigned frequency by more than 250 percent of the authorized bandwidth: At least 43+10Log(P) dB.

L). Antenna Designation: Detachable

M). Power Supply: DC 13.8V by battery or AC120V/60Hz by main power

N). Battery Endpoint: DC 10.4 V

O). Operating Frequency Range and Channels

Frequency Range: 440 MHz ~ 470MHz

Channel Separation: 12.5 KHz / 25 KHz

Top Channel: 469.9875 MHz

Centre Channel: 455.0000 MHz

Bottom Channel: 440.0125 MHz

1.2 Related Submittal(s) / Grant (s)

This submittal(s) (test report) is intended for FCC ID: R74TR-50U and IC: 5465A-TR50U filing to comply with the FCC Part 90 and RS-119 requirements

1.3 Test Methodology

The radiated emission testing was performed according to the procedures of ANSI C63.4 : 2003;TIA/EIA 603 and FCC CFR 47 Rules of 2.1046, 2.1047, 2.1049, 2.1051, 2.1053, 2.1055, 2.1057.

1.4 Test Facility

The alternate test site of OATS used to collect the radiated data is located on the address of Accurate Technology Co. Ltd. F1, Bldg. A, Changyuan New Meterial Port, Keyuan Rd. Science & Industry Park, Nanshan District, 518057, Shenzhen P.R. China. The test site is constructed and calibrated to meet the FCC requirements in documents ANSI C63.4: 2003 and IC requirements in documents RSS 212.

1.5 Special Accessories

Not available for this EUT intended for grant.

1.6 Equipment Modifications

Not available for this EUT intended for grant.

2. System Test Configuration

2.1 EUT Configuration

The EUT configuration for testing is installed on RF field strength measurement to meet the Commission's requirement and operating in a manner which intends to maximize its emission characteristics in a continuous normal application.

2.2 EUT Exercise

The Transmitter was operated in the normal operating mode. the TX frequency was fixed which was for the purpose of the measurements.

2.3 GENERAL TECHNICAL REQUIREMENTS

- a), Section 15.207: Conducted Limits
- b). Section 90.205: Maximum ERP is dependent upon the station's antenna HAAT and required service area
- c). Section 90.207: Modulation Characteristic
- d). Section 90.209: Occupied Bandwidth
- e). Section 90.210: Emission Mask
- f). Section 90.213: Frequency Tolerance
- i). Section 90.214: Transmitter Frequency Behavior

2.4 Configuration of Tested System

Fig. 2-1 Configuration of Tested System

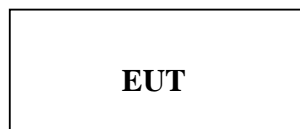


Table 2-1 Equipment Used in Tested System

Item	Equipment	Mfr/Brand	Model/Type No.	Identifier	Series No.	Note
E-1	PORTABLE REPEATER	HYT	TR-50U	FCC ID: R74TR-50U IC: 5465A-TR50U	N/A	EUT

3. SUMMARY OF TEST RESULTS

FCC Rules	Description Of Test	Result
§ 15.207	Conducted Limits	Compliant
§ 90.205	Maximum Transmitter Power	Compliant
§ 90.207	Modulation Characteristic	Compliant
§ 90.209	Occupied Bandwidth	Compliant
§ 90.210	Emission Mask	Compliant
§ 90.213	Frequency Tolerance	Compliant
§ 90.214	Transmitter Frequency Behavior	Compliant

4. DESCRIPTION OF TEST MODES

The EUT (PORTABLE REPEATER) has been tested under normal operating condition. Three channels(The top channel, the middle channel and the bottom channel) are chosen for testing at each channel separation (12.5 KHz / 25 KHz).

5. CONDUCTED LIMITS

5.1 PROVISIONS APPLICABLE

a). For an intentional radiator that is designed to be connected to the public utility(AC) power line, the, the radio frequency voltage that is conducted back onto the AC power line on any frequencies within the band 150 KHz to 30 MHz shall not exceed the limits in the following table, as measured using a 50uH/50 ohms line impedance stabilization network (LISN). Compliance with the provisions of this paragraph shall be based on the measurement of the radio frequency voltage between each power line and ground at the power terminal. The lower limit applies at the boundary between the frequency ranges.

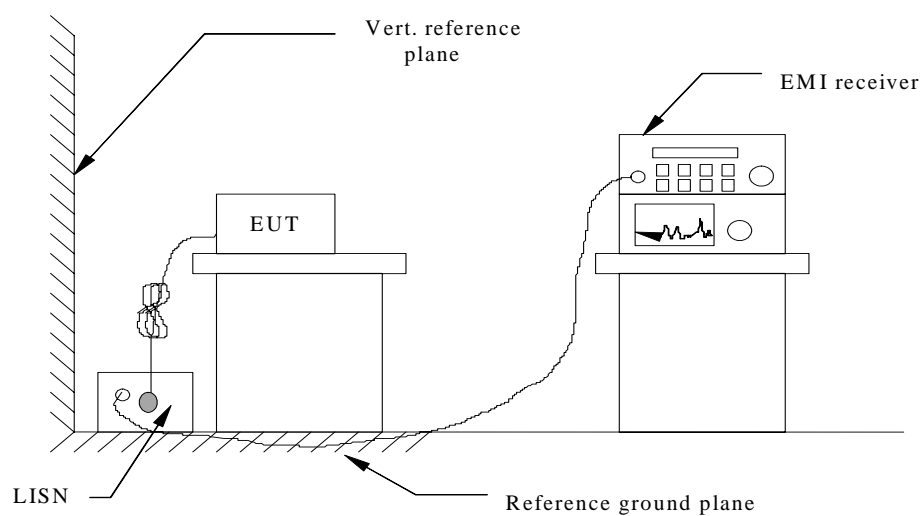
Frequency of Emission (MHz)	Conducted Limit(dBuV)	
	Quasi-Peak	Average
0.15 – 0.5	66 to 56 *	56 to 46 *
0.5 – 5	56	46
5 – 30	60	50

* Decreases with the logarithm of the frequency.

5.2 MEASUREMENT PROCEDURE

- 1) The equipment was set up as per the test configuration to simulate typical actual usage per the user's manual. When the EUT is a tabletop system, a wooden table with a height of 0.8 meters is used and is placed on the ground plane as per ANSI C63.4 (see Test Facility for the dimensions of the ground plane used). When the EUT is a floor-standing equipment, it is placed on the ground plane which has a 3-12 mm non-conductive covering to insulate the EUT from the ground plane.
- 2) Support equipment, if needed, was placed as per ANSI C63.4.
- 3) All I/O cables were positioned to simulate typical actual usage as per ANSI C63.4.
- 4) The EUT received AC120V/60Hz power through a Line Impedance Stabilization Network (LISN) which supplied power source and was grounded to the ground plane.
- 5) All support equipments received AC power from a second LISN, if any.
- 6) The EUT test program was started. Emissions were measured on each current carrying line of the EUT using a spectrum Analyzer / Receiver connected to the LISN powering the EUT. The LISN has two monitoring points: Line 1 (Hot Side) and Line 2 (Neutral Side). Two scans were taken: one with Line 1 connected to Analyzer / Receiver and Line 2 connected to a 50 ohm load; the second scan had Line 1 connected to a 50 ohm load and Line 2 connected to the Analyzer / Receiver.
- 7) Analyzer / Receiver scanned from 150kHz to 30MHz for emissions in each of the test modes. During the above scans, the emissions were maximized by cable manipulation.

5.3 TEST SETUP BLOCK DIAGRAM(block diagram of configuration)



5.4 Test equipment used:

Conducted Emission Test Site				
Name of Equipment	Manufacturer	Model	Serial Number	Calibration Due
ARTIFICIAL MAINS	ROHDE&SCHWARZ	ESH2-Z5	100028	11/11/2006
EMI TEST RECEIVER	ROHDE & SCHWARZ	ESCS 30	100038	11/11/2006
PULSE LIMITER	ROHDE&SCHWARZ	ESHSZ2	100044	11/11/2006
EMI TEST SOFTWARE	ROHDE & SCHWARZ	ESK1	NA	N/A

5.5 TEST RESULT

LINE CONDUCTED EMISSION TEST RESULT

FREQ MHz	PEAK RAW dBuV	Q.P. RAW dBuV	AVG RAW dBuV	Q.P. Limit dBuV	AVG Limit dBuV	Q.P. Margin dB	AVG Margin dB	NOTE
0.187	46.46	---	---	64.13	54.13	---	-7.67	L1
0.285	44.55	---	---	60.09	50.09	---	-5.54	L1
0.339	43.70	---	---	59.22	49.22	---	-5.52	L1
0.424	41.35	---	---	57.43	47.43	---	-6.08	L1
0.515	39.66	---	---	56.00	46.00	---	-6.34	L1
1.764	36.72	---	---	56.00	46.00	---	-9.28	L1
0.193	45.38	---	---	64.08	54.08	---	-8.70	L2
0.274	43.26	---	---	60.72	50.72	---	-7.46	L2
0.307	42.41	---	---	59.35	49.35	---	-6.94	L2
0.411	40.55	---	---	57.46	47.46	---	-6.91	L2
0.514	38.38	---	---	56.00	46.00	---	-7.62	L2
1.733	35.19	---	---	56.00	46.00	---	-10.81	L2

L1 = Line One (Hot side) / L2 = Line Two (Neutral side)

**NOTE: “---” denotes the peak emission level was or more than 2dB below the Average limit, so no re-check anymore.

6. FREQUENCY TOLERANCE

6.1 PROVISIONS APPLICABLE

- a). According to FCC Part 2 Section 2.1055(a)(1), the frequency stability shall be measured with variation of ambient temperature from -30 to $+60$ centigrade.
- b). According to FCC Part 2 Section 2.1055(d)(2), for battery powered equipment, the frequency stability shall be measured with reducing primary supply voltage to the battery operating end point, which is specified by the manufacture.
- c). According to FCC Part 90 Section 90.213, the frequency tolerance must be maintained within 0.00025% for 12.5KHz channel separation and 0.0005% for 25KHz channel separation.

6.2 MEASUREMENT PROCEDURE

6.2.1 Frequency stability versus environmental temperature

1. Setup the configuration per figure 1 for frequencies measurement inside an environment chamber, Install new battery in the EUT.
2. Turn on EUT and set SA center frequency to the EUT radiated frequency. Set SA Resolution Bandwidth to 1KHz and Video Resolution Bandwidth to 1KHz and Frequency Span to 50KHz. Record this frequency as reference frequency.
3. Set the temperature of chamber to 60 . Allow sufficient time (approximately 30 min) for the temperature of the chamber to stabilize. While maintaining a constant temperature inside the chamber, turn the EUT on and measure the EUT operating frequency.
4. Repeat step 2 with a 10 decreased per stage until the lowest temperature -30 is measured, record all measured frequencies on each temperature step.

6.2.2 Frequency stability versus input voltage

1. Setup the configuration per figure 1 for frequencies measured at temperature if it is within 15 to 25 . Otherwise, an environment chamber set for a temperature of 20 shall be used. The EUT shall be powered by DC 13.8V or AC 120V/60Hz.
2. Set SA center frequency to the EUT radiated frequency. Set SA Resolution Bandwidth to 1KHz and Video Resolution Bandwidth to 1KHz. Record this frequency as reference frequency.
3. Supply the EUT primary voltage at the operating end point which is specified by manufacturer and record the frequency.

6.3 TEST SETUP BLOCK DIAGRAM(block diagram of configuration)

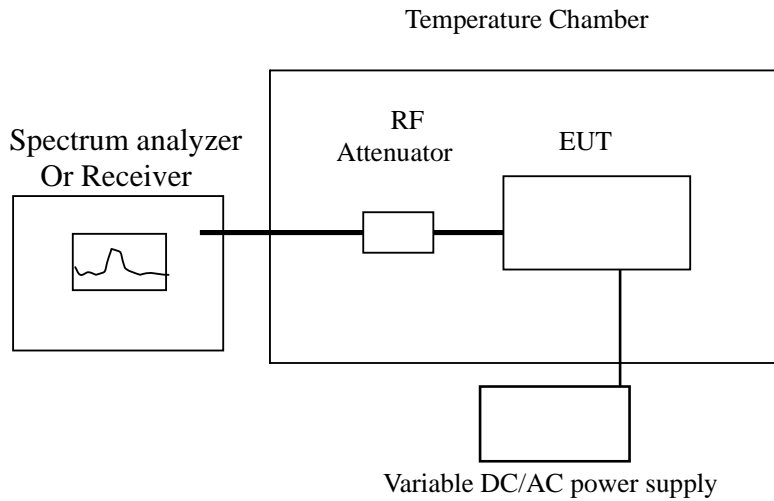


Figure 1

6.4 Test equipment used:

Name of Equipment	Manufacturer	Model	Serial Number	Calibration Due
Receiver	Rohde&Schwarz	ESI26	100009	11/11/2006
Climate Chamber	ESPEC	EL-10KA	05107008	01/30/2007

6.5 TEST RESULT

- a. Frequency stability versus input voltage (battery operation end point voltage is 10.4 V)

Measurement Result for Channel Separation of 12.5KHz

Channel	Reference Frequency (MHz)	Frequency Measured at end point voltage	Frequency Deviation (%)	Limit (%)
Bottom	440.01250	440.012016	-0.00011	0.00025
Middle	455.00000	454.999636	-0.00008	0.00025
Top	469.98750	469.987265	-0.00005	0.00025

Measurement Result for Channel Separation of 25KHz

Channel	Reference Frequency (MHz)	Frequency Measured at end point voltage	Frequency Deviation (%)	Limit (%)
Bottom	440.01250	440.012148	-0.00008	0.0005
Middle	455.00000	454.999727	-0.00006	0.0005
Top	469.98750	469.987688	0.00004	0.0005

- b. Frequency stability versus ambient temperature

Bottom Channel @12.5KHz Channel Separation

Reference Frequency: 440.01250 MHz		Limit: $\pm 0.00025\%$	
Environment Temperature ()	Power Supply	Frequency deviation measured with time Elapse (10 minutes)	
		(MHz)	%
60	13.8	440.01210	-0.00009
50	13.8	440.01210	-0.00009
40	13.8	440.01219	-0.00007
30	13.8	440.01228	-0.00005
20	13.8	440.01232	-0.00004
10	13.8	440.01232	-0.00004
0	13.8	440.01241	-0.00002
-10	13.8	440.01246	-0.00001
-20	13.8	440.01250	0.00000
-30	13.8	440.01254	0.00001

Middle Channel @12.5KHz Channel Separation

Reference Frequency: 455.00000 MHz		Limit: $\pm 0.00025\%$	
Environment Temperature ()	Power Supply	Frequency deviation measured with time Elapse (10 minutes)	
		(MHz)	%
60	13.8	454.99964	-0.00008
50	13.8	454.99968	-0.00007
40	13.8	454.99973	-0.00006
30	13.8	454.99982	-0.00004
20	13.8	454.99986	-0.00003
10	13.8	454.99991	-0.00002
0	13.8	455.00000	0.00000
-10	13.8	455.00000	0.00000
-20	13.8	455.00005	0.00001
-30	13.8	455.00005	0.00001

Top Channel @12.5KHz Channel Separation

Reference Frequency: 469.98750 MHz		Limit: $\pm 0.00025\%$	
Environment Temperature ()	Power Supply	Frequency deviation measured with time Elapse (10 minutes)	
		(MHz)	%
60	13.8	469.98741	-0.00002
50	13.8	469.98745	-0.00001
40	13.8	469.98750	0.00000
30	13.8	469.98755	0.00001
20	13.8	469.98755	0.00001
10	13.8	469.98759	0.00002
0	13.8	469.98764	0.00003
-10	13.8	469.98769	0.00004
-20	13.8	469.98773	0.00005
-30	13.8	469.98783	0.00007

Bottom Channel @ 25KHz Channel Separation

Reference Frequency: 440.01250 MHz		Limit: $\pm 0.0005\%$	
Environment Temperature ()	Power Supply	Frequency deviation measured with time Elapse (10 minutes)	
		(MHz)	%
60	13.8	440.01224	-0.00006
50	13.8	440.01224	-0.00006
40	13.8	440.01228	-0.00005
30	13.8	440.01232	-0.00004
20	13.8	440.01237	-0.00003
10	13.8	440.01241	-0.00002
0	13.8	440.01246	-0.00001
-10	13.8	440.01250	0.00000
-20	13.8	440.01254	0.00001
-30	13.8	440.01259	0.00002

Middle Channel @25KHz Channel Separation

Reference Frequency: 455.00000 MHz		Limit: $\pm 0.0005\%$	
Environment Temperature ()	Power Supply	Frequency deviation measured with time Elapse (10 minutes)	
		(MHz)	%
60	13.8	454.99977	-0.00005
50	13.8	454.99986	-0.00003
40	13.8	454.99986	-0.00003
30	13.8	454.99991	-0.00002
20	13.8	454.99995	-0.00001
10	13.8	454.99995	-0.00001
0	13.8	455.00000	0.00000
-10	13.8	455.00005	0.00001
-20	13.8	455.00009	0.00002
-30	13.8	455.00014	0.00003

Top Channel @ 25KHz Channel Separation

Reference Frequency: 469.98750 MHz		Limit: $\pm 0.0005\%$	
Environment Temperature ()	Power Supply	Frequency deviation measured with time Elapse (10 minutes)	
		(MHz)	%
60	13.8	469.98741	-0.00002
50	13.8	469.98741	-0.00002
40	13.8	469.98745	-0.00001
30	13.8	469.98750	0.00000
20	13.8	469.98755	0.00001
10	13.8	469.98755	0.00001
0	13.8	469.98759	0.00002
-10	13.8	469.98764	0.00003
-20	13.8	469.98769	0.00004
-30	13.8	469.98769	0.00004

7. EMISSION BANDWIDTH

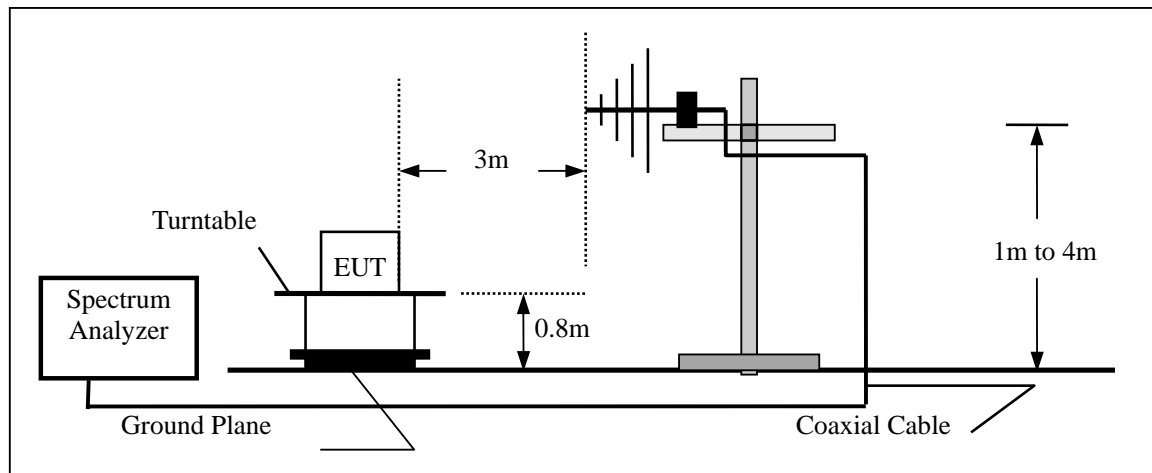
7.1 PROVISIONS APPLICABLE

According to FCC Part 90 Section 90.209: The authorized bandwidth shall be 12.5 KHz.

7.2 MEASUREMENT PROCEDURE

- 1). The EUT was placed on a turn table which is 0.8m above ground plane.
- 2). The EUT was modulated by 1KHz Sine wave audio signal to achieve 60% deviation
- 3). Set SPA Center Frequency = fundamental frequency , RBW=VBW= 300 Hz, Span =50 KHz.
- 4). Set SPA Max hold. Mark peak, -20dB.

7.3 TEST SETUP BLOCK DIAGRAM (Block Diagram of Configuration)

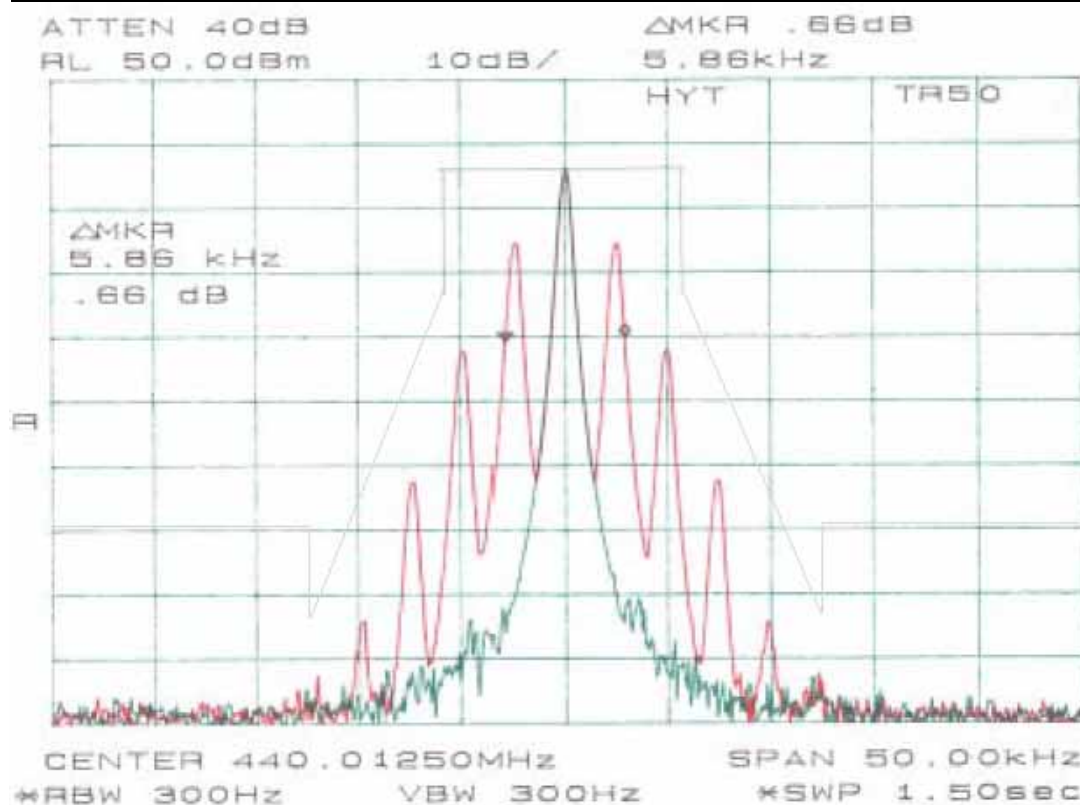
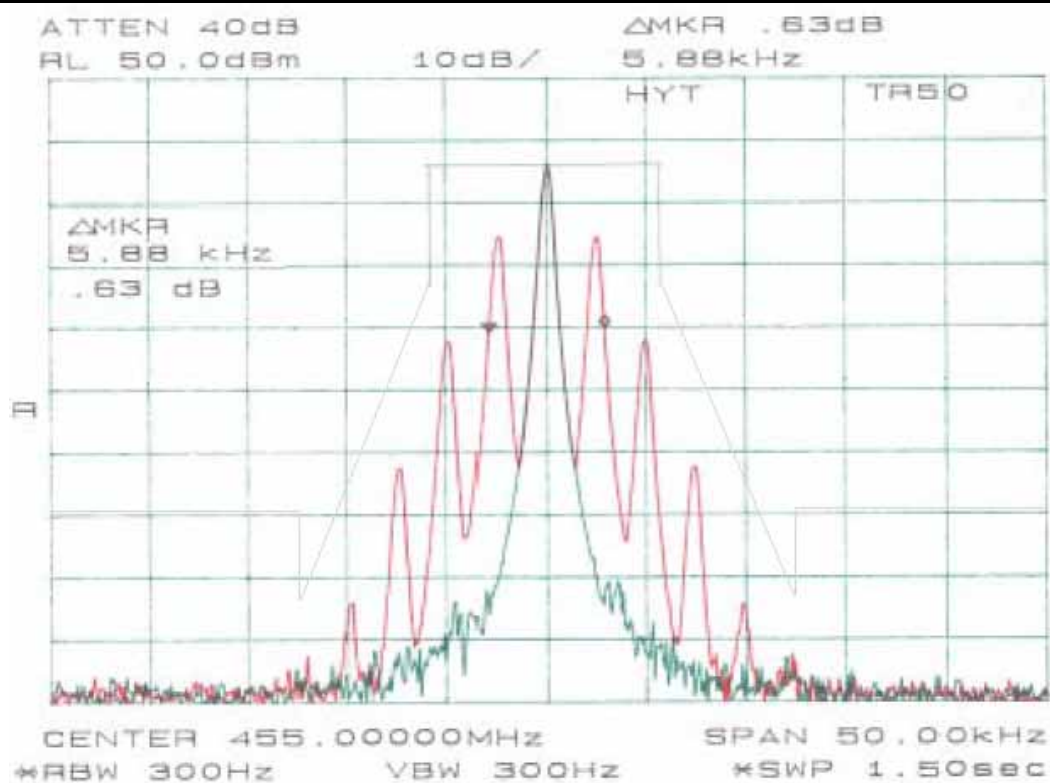


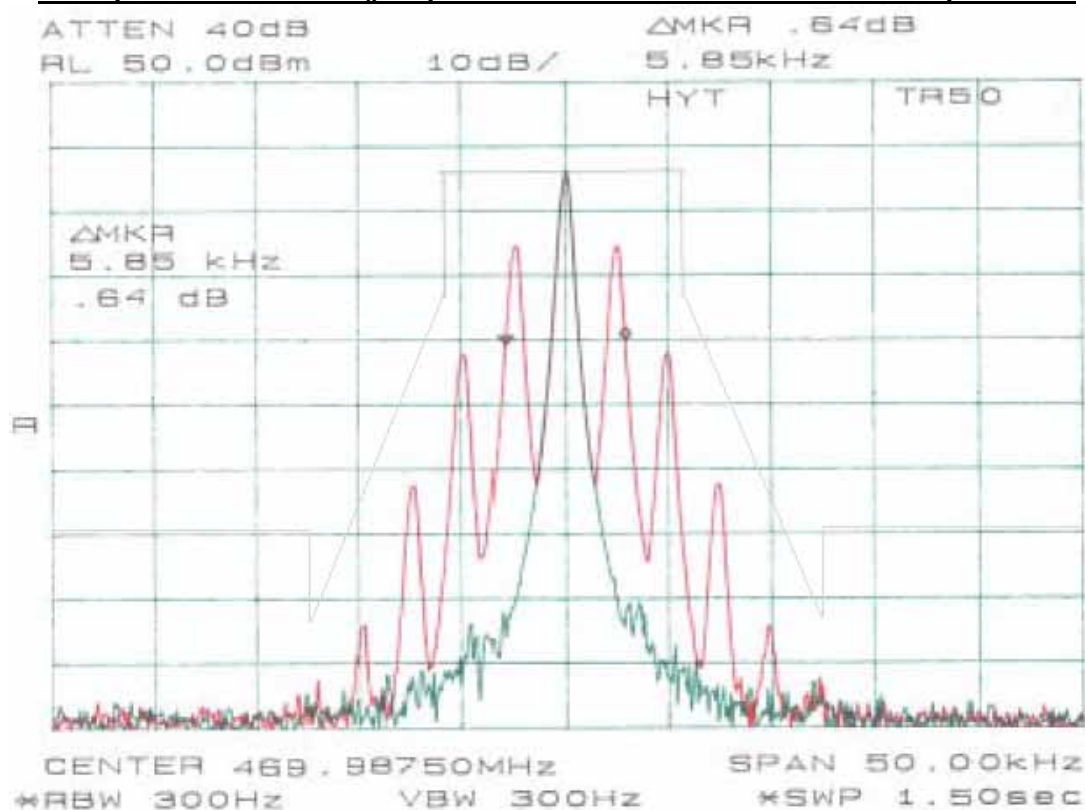
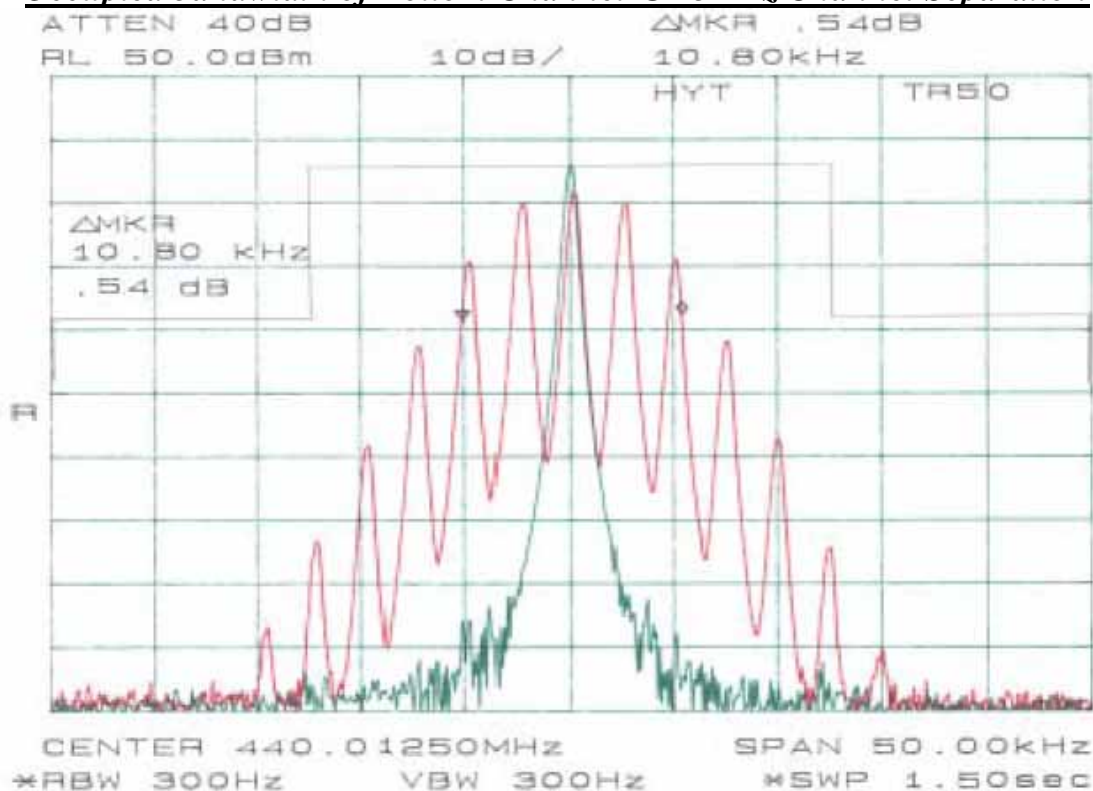
7.4 MEASUREMENT EQUIPMENT USED:

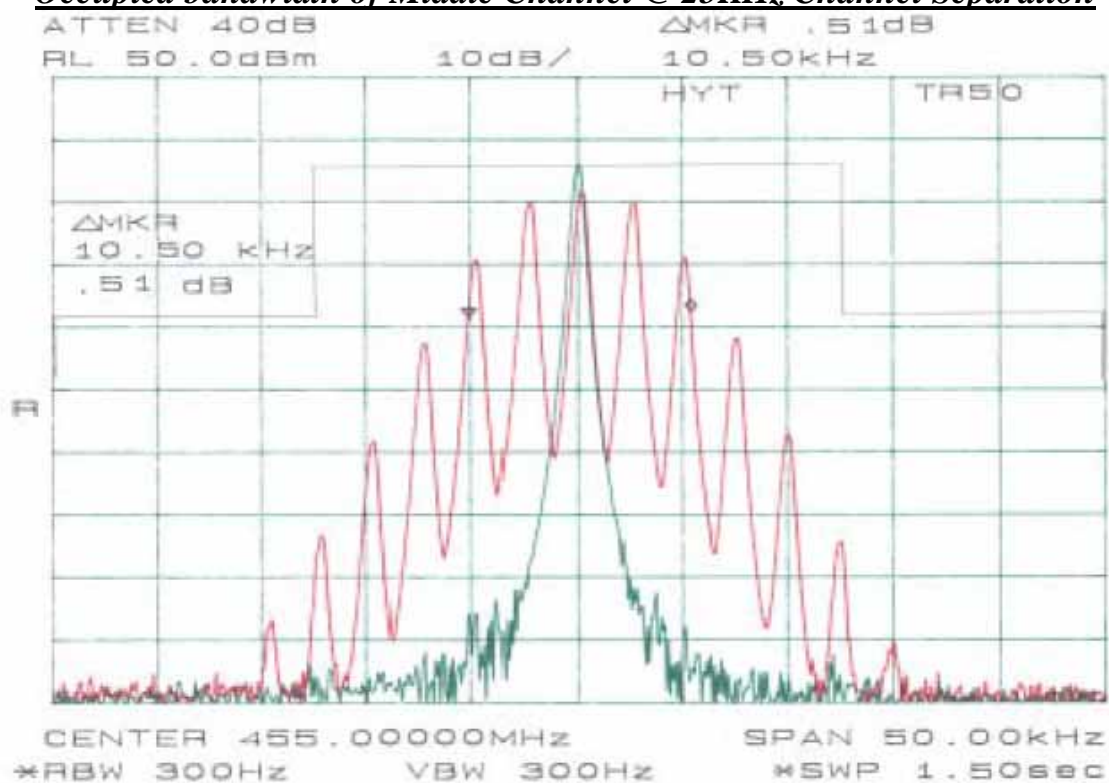
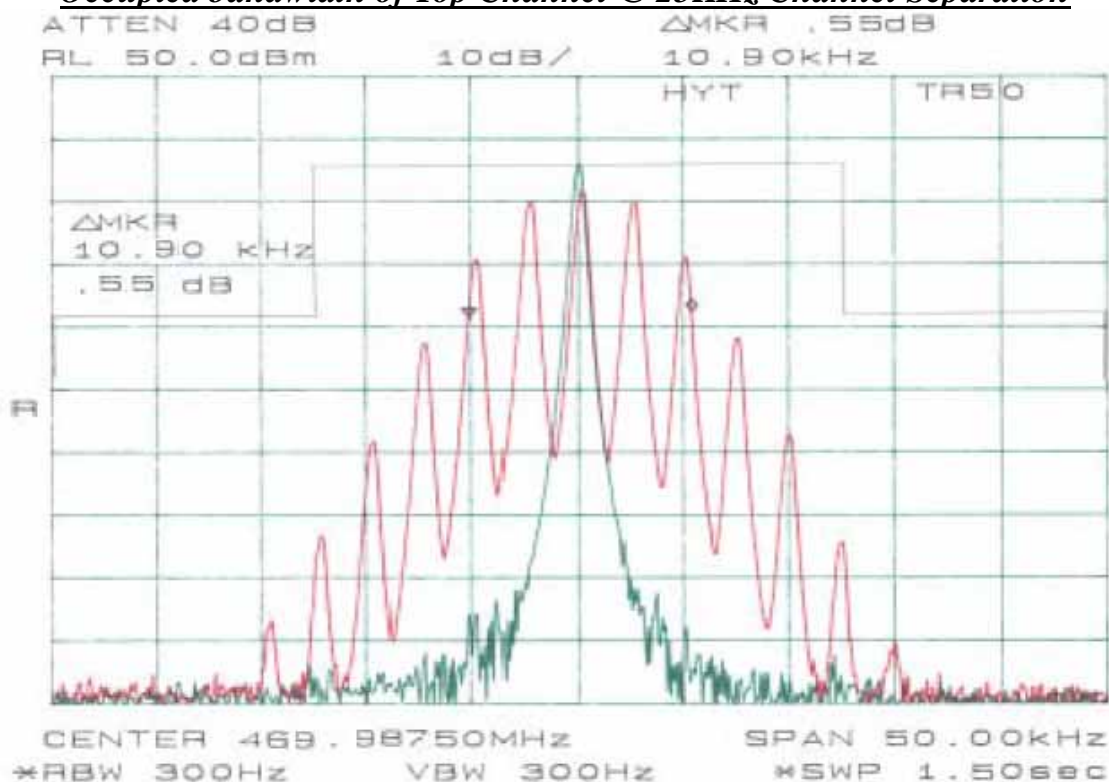
Name of Equipment	Manufacturer	Model	Serial Number	Calibration Due
Receiver	Rohde&Schwarz	ESI26	100009	11/11/2006
Climate Chamber	ESPEC	EL-10KA	05107008	01/30/2007

7.5 MEASUREMENT RESULT:

26 dB Bandwidth Measurement Result						
Operating Frequency	12.5 KHz Channel Separation			25 KHz Channel Separation		
	Test Data	Limits	Result	Test Data	Limits	Result
Bottom Channel	5.86 KHz	11.25 KHz	Pass	10.8 KHz	20.00 KHz	Pass
Middle Channel	5.88 KHz	11.25 KHz	Pass	10.5 KHz	20.00 KHz	Pass
Top Channel	5.85 KHz	11.25 KHz	Pass	10.9 KHz	20.00 KHz	Pass

Occupied bandwidth of Bottom Channel @ 12.5KHz Channel Separation**Occupied bandwidth of Middle Channel @ 12.5KHz Channel Separation**

Occupied bandwidth of Top Channel @ 12.5KHz Channel Separation**Occupied bandwidth of Bottom Channel @ 25KHz Channel Separation**

Occupied bandwidth of Middle Channel @ 25KHz Channel Separation**Occupied bandwidth of Top Channel @ 25KHz Channel Separation**

8. UNWANTED RADIATION

8.1 PROVISIONS APPLICABLE

8.1.1 According to Section 95.210, the power of each unwanted emission shall be less than Transmitted Power as specified below for transmitters designed to operate with 12.5 KHz channel bandwidth:

- 1). On any frequency removed from the center of the authorized bandwidth f_0 to 5.625 KHz removed from f_0 : Zero dB
- 2). On any frequency removed from the center of the authorized bandwidth by a displacement frequency (f_d in KHz) f_0 of more than 5.625 KHz but no more than 12.5 KHz: At least $7.27(f_d - 2.88 \text{ KHz})$ dB
- 3). On any frequency removed from the center of the authorized bandwidth by a displacement frequency (f_d in KHz) f_0 of more than 12.5 KHz: At least $50 + 10 \log(P)$ dB or 70 dB, which ever is lesser attenuation.

8.1.2 According to Section 95.210, Emission mask B. For transmitters designed to transmit with 25KHz channel separation and equipped with an audio low-pass filter, the power of any emission must be attenuated below the unmodulated carrier power(P) as following:

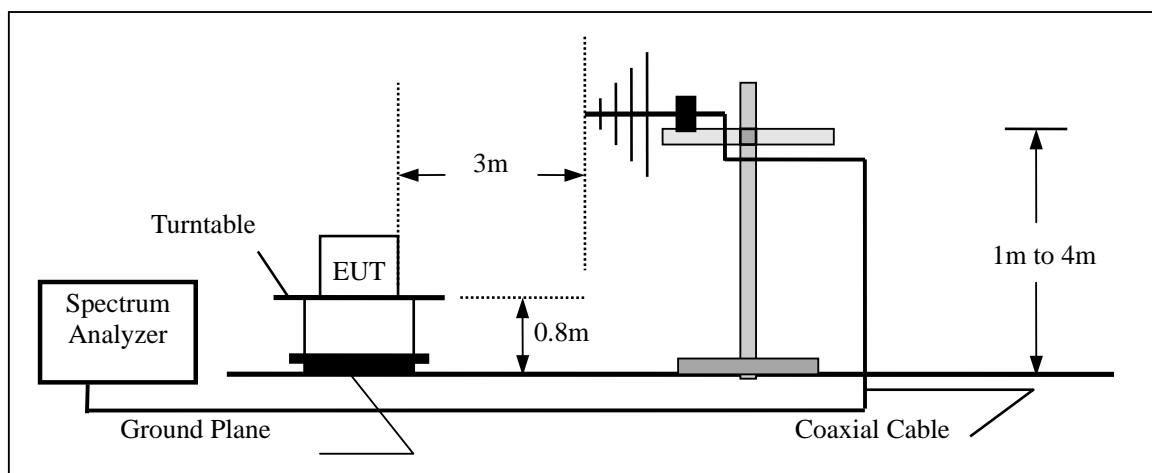
- 1), On any frequency removed from the assigned frequency by more than 50 percent, but no more than 100 percent of the authorized bandwidth: At least 25 dB.
- 2), On any frequency removed from the assigned frequency by more than 100 percent, but no more than 250 percent of the authorized bandwidth: At least 35 dB.
- 3), On any frequency removed from the assigned frequency by more than 250 percent of the authorized bandwidth: At least $43 + 10 \log(P)$ dB.

8.2 MEASUREMENT PROCEDURE

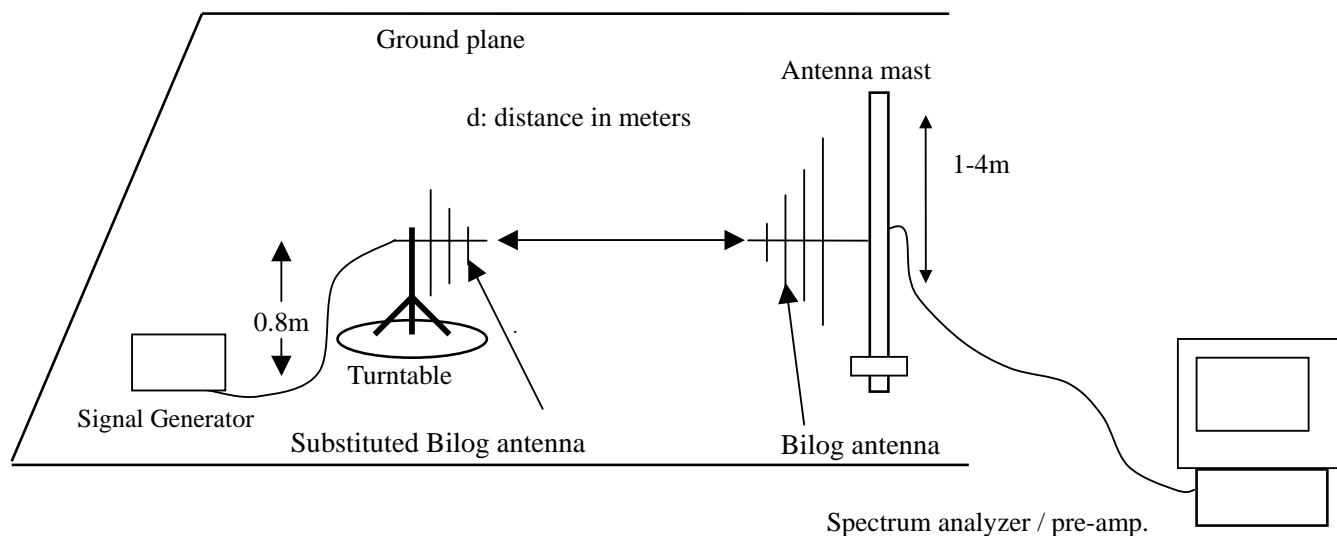
- 1). On a test site, the EUT shall be placed on a turntable, and in the position closest to the normal use as declared by the user.
- 2). The test antenna shall be oriented initially for vertical polarization located 3m from the EUT to correspond to the transmitter.
- 3). The output of the antenna shall be connected to the measuring receiver and either a peak or quasi-peak detector was used for the measurement as indicated on the report. The detector selection is based on how close the emission level was approaching the limit.
- 4). The transmitter shall be switched on; if possible, without the modulation and the measurement receiver shall be tuned to the frequency of the transmitter under test.
- 5). The test antenna shall be raised and lowered through the specified range of height until the measuring receiver detects a maximum signal level.
- 6). The transmitter shall than be rotated through 360° in the horizontal plane, until the maximum signal level is detected by the measuring receiver.

- 7). The test antenna shall be raised and lowered again through the specified range of height until the measuring receiver detects a maximum signal level.
- 8). The maximum signal level detected by the measuring receiver shall be noted.
- 9). The measurement shall be repeated with the test antenna set to horizontal polarization.
- 10). Replace the antenna with a proper Antenna (substitution antenna).
- 11). The substitution antenna shall be oriented for vertical polarization and, if necessary, the length of the substitution antenna shall be adjusted to correspond to the frequency of transmitting.
- 12). The substitution antenna shall be connected to a calibrated signal generator.
- 13). If necessary, the input attenuator setting of the measuring receiver shall be adjusted in order to increase the sensitivity of the measuring receiver.
- 14). The test antenna shall be raised and lowered through the specified range of the height to ensure that the maximum signal is received.
- 15). The input signal to substitution antenna shall be adjusted to the level that produces a level detected by the measuring receiver, that is equal to the level noted while the transmitter radiated power was measured, corrected for the change of input attenuation setting of the measuring receiver.
- 16). The input level to the substitution antenna shall be recorded as power level in dBm, corrected for any change of input attenuator setting of the measuring receiver.
- 17). The measurement shall be repeated with the test antenna and the substitution antenna oriented for horizontal polarization.

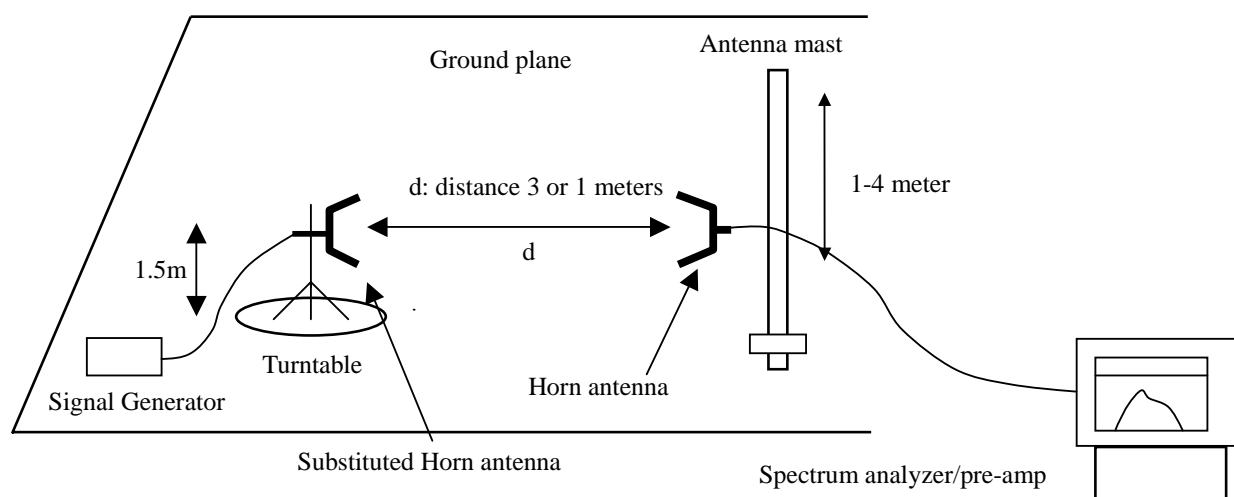
8.3 TEST SETUP BLOCK DIAGRAM (block diagram of configuration)



Radiation below 1GHz



Radiation above 1GHz



8.4 MEASUREMENT EQUIPMENT USED:

Radiated Emission Test Site				
Name of Equipment	Manufacturer	Model	Serial Number	Calibration Due
ULTRA-BROADBAND ANTENNA	ROHDE & SCHWARZ	HL562	100015	11/13/2006
EMI TEST RECEIVER	ROHDE & SCHWARZ	ESI 26	100009	11/11/2006
RF TEST PANEL	ROHDE & SCHWARZ	TS / RSP	335015/ 0017	N/A
TURNTABLE	ETS	2088	2149	N/A
ANTENNA MAST	ETS	2075	2346	N/A
EMI TEST SOFTWARE	ROHDE & SCHWARZ	ESK1	NA	N/A

8.5 MEASUREMENT RESULTS:**Measurement Result For 12.5 KHz Channel Separation**

Calculation: Limit (dBm)= EL-50-10log₁₀ (TP)

Notes: EL is the emission level of the Output Power expressed in dBm,, in this application, the EL is 36.73 dBm.

$$\text{Limit (dBm)} = 36.73 - 50 - 10 \log_{10} (4.710) = -20$$

Bottom Channel

Frequency (MHz)	Reading level (dBuV)	Antenna Polarization	S.G. (dBm)	Cable loss (dB)	Correction (dB)	Emission level (dBm)	Limit (dBm)	Margin (dB)
***							-20	

Middle Channel

Frequency (MHz)	Reading level (dBuV)	Antenna Polarization	S.G. (dBm)	Cable loss (dB)	Correction (dB)	Emission level (dBm)	Limit (dBm)	Margin (dB)
***							-20	

Top Channel

Frequency (MHz)	Reading level (dBuV)	Antenna Polarization	S.G. (dBm)	Cable loss (dB)	Correction (dB)	Emission level (dBm)	Limit (dBm)	Margin (dB)
***							-20	

***Notes:**

*** means that the emission level is too low to be measured or at least 20 dB down than the limit.

Measurement Result For 25 KHz Channel Separation

Calculation: Limit (dBm)= EL-43-10log₁₀ (TP)

Notes: EL is the emission level of the Output Power expressed in dBm,, in this application, the EL is 36.81 dBm.

Limit (dBm)=36.81- 43-10log₁₀ (4.797) = -13 dbm

Bottom Channel

Frequency (MHz)	Reading level (dBuV)	Antenna Polarization	S.G. (dBm)	Cable loss (dB)	Correction (dB)	Emission level (dBm)	Limit (dBm)	Margin (dB)
***							-13	

Middle Channel

Frequency (MHz)	Reading level (dBuV)	Antenna Polarization	S.G. (dBm)	Cable loss (dB)	Correction (dB)	Emission level (dBm)	Limit (dBm)	Margin (dB)
***							-13	

Top Channel

Frequency (MHz)	Reading level (dBuV)	Antenna Polarization	S.G. (dBm)	Cable loss (dB)	Correction (dB)	Emission level (dBm)	Limit (dBm)	Margin (dB)
***							-13	

***Notes:**

*** means that the emission level is too low to be measured or at least 20 dB down than the limit.

8.6 Emission Mask Plot

Plese refer to Section 7.5 of this test report for the compliance plots of emission mask and 26dB bandwidth

9. MODULATION CHARACTERISTICS

9.1 PROVISIONS APPLICABLE

According to CFR 47 section 2.1047(a), for Voice Modulation Communication Equipment, the frequency response of the audio modulation circuit over a range of 100 to 5000Hz shall be measured.

9.2 MEASUREMENT METHOD

9.2.1 Modulation Limit

1). Configure the EUT as shown in figure 1, adjust the audio input for 60% of rated system deviation at 1KHz using this level as a reference (0dB) and vary the input level from -20 to +20dB. Record the frequency deviation obtained as a function of the input level.

2). Repeat step 1 with input frequency changing to 300,1004, and 2500Hz in sequence.

9.2.2 Audio Frequency Response

1). Configure the EUT as shown in figure 1.

2). Adjust the audio input for 20% of rated system deviation at 1 KHz using this level as a reference (0 dB).

3). Vary the Audio frequency from 100 Hz to 10 KHz and record the frequency deviation.

4). Audio Frequency Response = $20\log_{10}$ (Deviation of test frequency/Deviation of 1KHz reference).

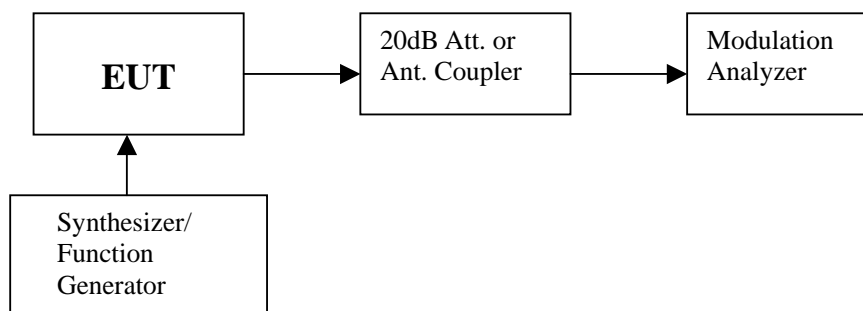


Figure 1: Modulation characteristic measurement configuration

9.3 MEASUREMENT INSTRUMENTS

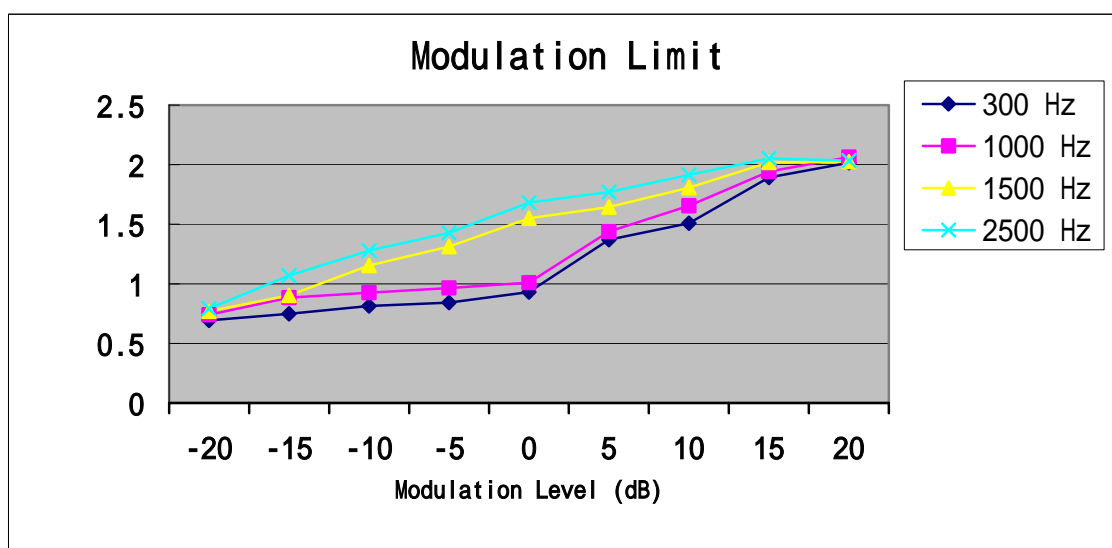
Name of Equipment	Manufacturer	Model	Serial Number	Calibration Due
Modulation Analyzer	HP	8901B	3104A03367	07/08/2006
Signal Generator	Rohde&Schwarz	SMT03	100059	02/01/2007

9.4 MEASUREMENT RESULT

a). Modulation Limit:

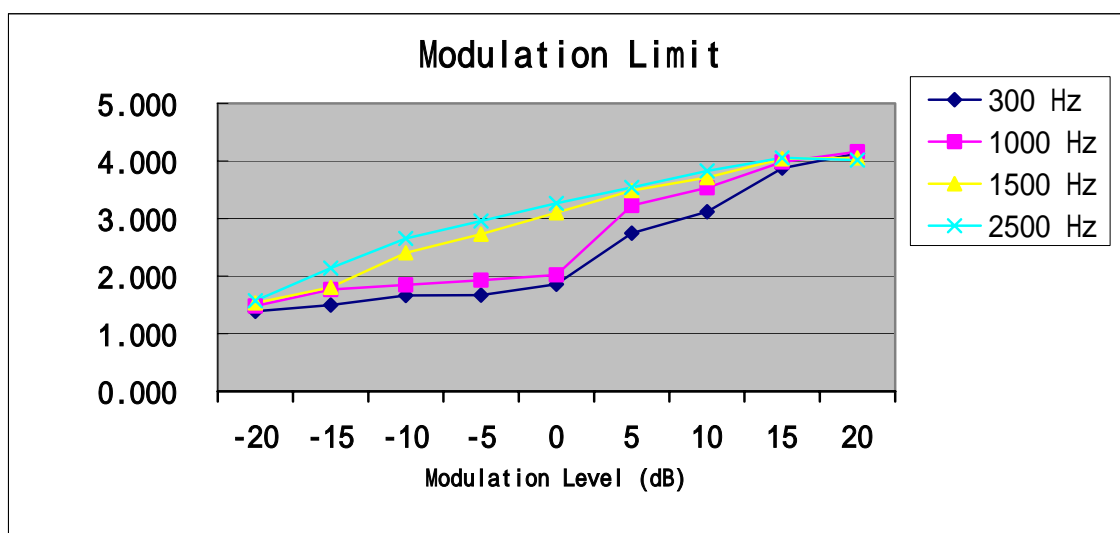
12.5KHz Channel Separation

Modulation Level (dB)	Peak Freq. Deviation At 300 Hz (KHz)	Peak Freq. Deviation At 1000 Hz (KHz)	Peak Freq. Deviation At 1500 Hz (KHz)	Peak Freq. Deviation At 2500 Hz (KHz)
-20	0.692	0.741	0.768	0.792
-15	0.748	0.883	0.902	1.070
-10	0.814	0.926	1.154	1.278
-5	0.843	0.965	1.314	1.428
0	0.930	1.010	1.552	1.682
+5	1.369	1.437	1.644	1.770
+10	1.510	1.655	1.806	1.914
+15	1.892	1.943	2.018	2.052
+20	2.017	2.062	2.026	2.034



Bottom Channel @ 25KHz Channel Separation

Modulation Level (dB)	Peak Freq. Deviation At 300 Hz (KHz)	Peak Freq. Deviation At 1004 Hz (KHz)	Peak Freq. Deviation At 1500 Hz (KHz)	Peak Freq. Deviation At 2500 Hz (KHz)
-20	1.387	1.482	1.536	1.571
-15	1.496	1.769	1.804	2.140
-10	1.666	1.849	2.408	2.656
-5	1.672	1.928	2.728	2.956
0	1.860	2.020	3.104	3.264
+5	2.748	3.230	3.488	3.540
+10	3.120	3.535	3.712	3.828
+15	3.878	3.983	4.036	4.054
+20	4.131	4.164	4.052	4.016

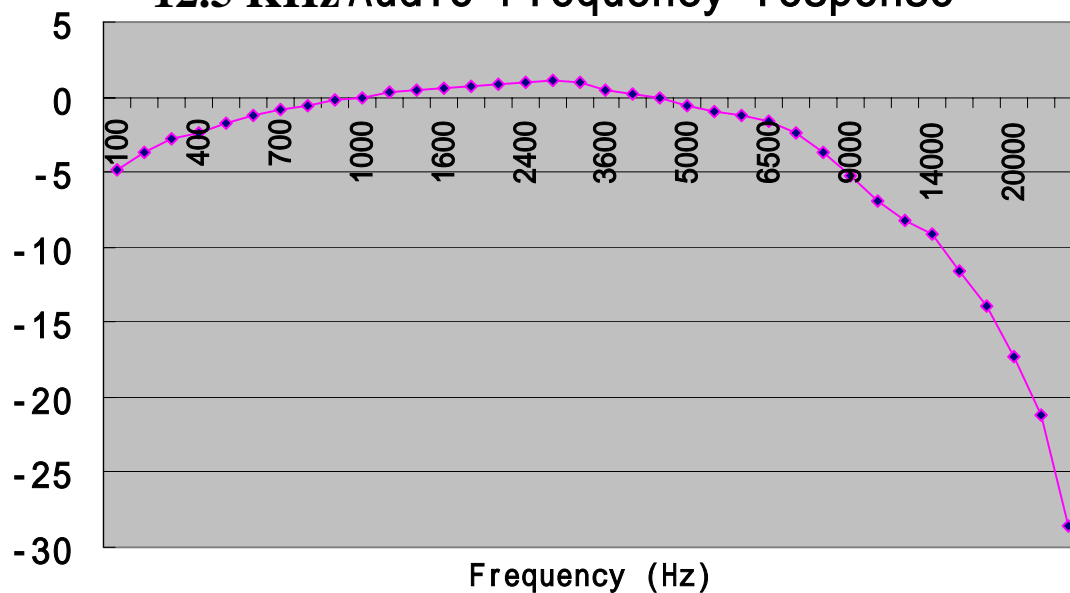


b). Audio Frequency Response:

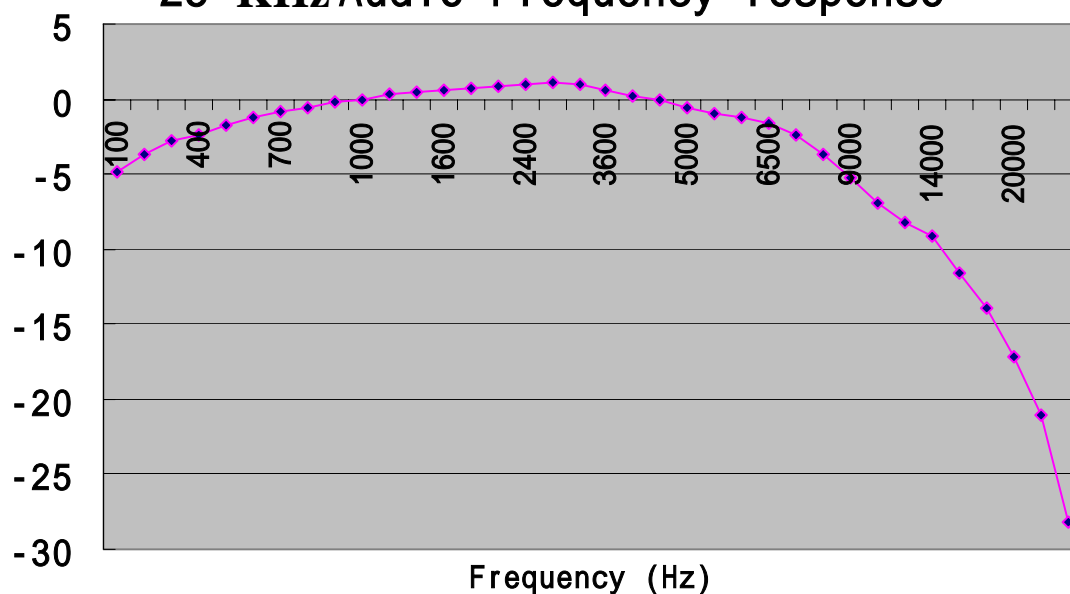
12.5KHz Channel Separation

Frequency (Hz)	Deviation (KHz)
100	0.92
200	1.04
300	1.16
400	1.22
500	1.30
600	1.38
700	1.46
800	1.50
900	1.56
1000	1.60
1200	1.66
1400	1.68
1600	1.72
1800	1.74
2000	1.76
2200	1.80
2400	1.82
2600	1.80
2800	1.70
3000	1.64
3200	1.58
3400	1.50
3600	1.44
3800	1.38
4000	1.32
4200	1.22
4400	1.04
4600	0.88
4800	0.72
5000	0.62
5500	0.56
6000	0.42
6500	0.32
7000	0.22
8500	0.14
10000	0.06

12.5 KHz Audio Frequency response



25 KHz Audio Frequency response



25KHz Channel Separation

Frequency (Hz)	Deviation (KHz)
100	2.07
200	2.34
300	2.61
400	2.75
500	2.93
600	3.11
700	3.29
800	3.38
900	3.51
1000	3.60
1200	3.74
1400	3.78
1600	3.87
1800	3.92
2000	3.96
2200	4.05
2400	4.10
2600	4.05
2800	3.83
3000	3.69
3200	3.56
3400	3.38
3600	3.24
3800	3.11
4000	2.97
4200	2.75
4400	2.34
4600	1.98
4800	1.62
5000	1.40
5500	1.26
6000	0.95
6500	0.72
7000	0.50
8500	0.32
10000	0.14

10. MAXIMUM TRANSMITTER POWER(CONDUCTED OUTPUT POWER)**10.1 Provisions Applicable**

Per FCC § 2.1046 and § 90.205: Maximum ERP is dependent upon the station's antenna HAAT and required service area.

10.2 Test Procedure

The RF output of transceiver was conducted to a spectrum analyzer through an appropriate attenuator.

10.3 Test Instruments

EQUIPMENT TYPE	MFR	MODEL NO.	SERIAL NO.	LAST CAL.	CAL DUE.
Spectrum Analyzer	ADVANTEST	R3132	N/A	06/29/2005	06/28/2006
Attenuator	R&S	50FH-010-30	N/A	12/18/2005	12/17/2006

10.4 Test Result

The maximum Conducted Power (CP) is

4.710 W for 12.5 KHz Channel Separation

4.797 W for 25 KHz Channel Separation

Calculation Formula: $CP = R + A + L$

* Note:

CP: The final Conducted Power

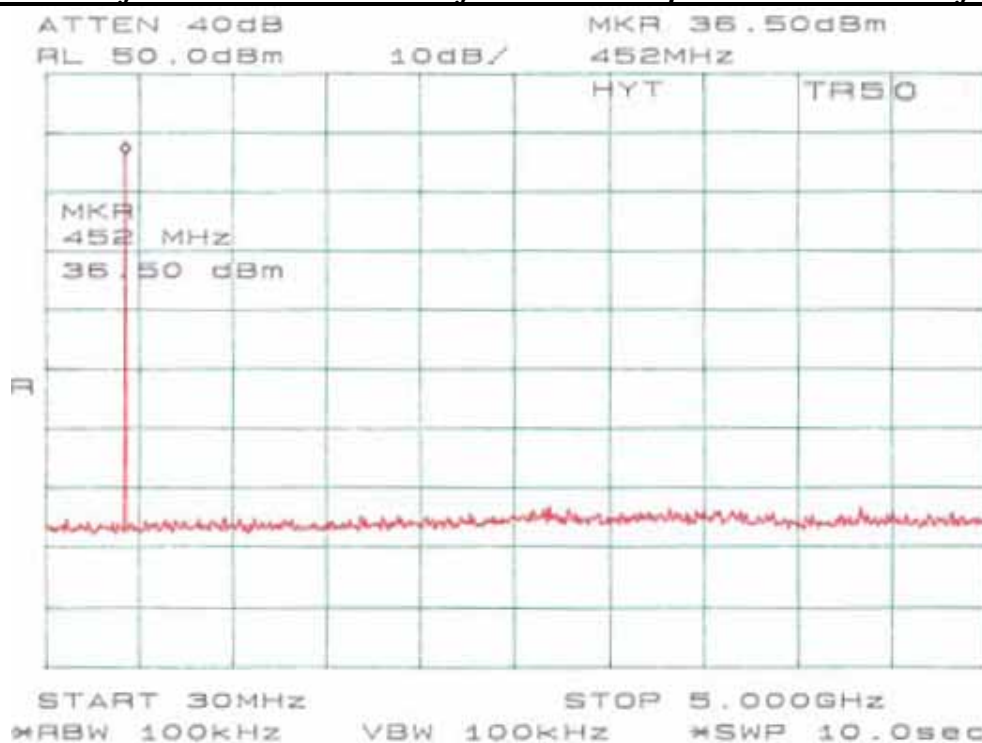
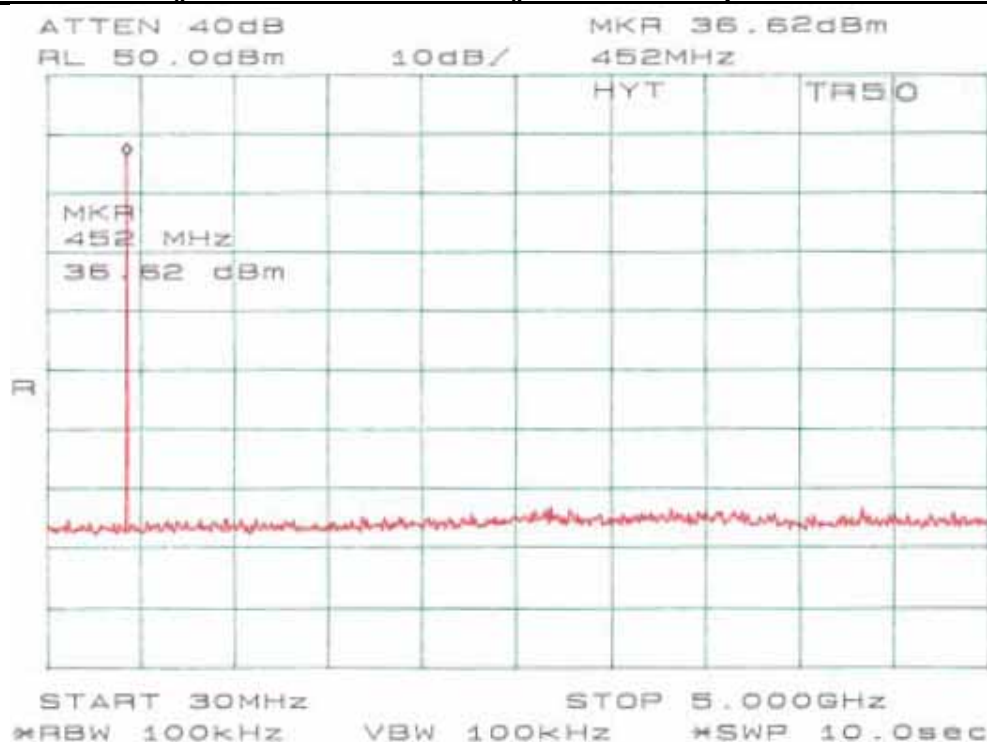
R : The reading value from spectrum analyzer

A : The attenuation value of the used attenuator

L : The loss of all connection cables

Conducted Power Measurement Results		
Channel Separation	Channel	Measurement Result
12.5 KHz	Bottom	36.65 dBm
	Middle	36.73 dBm
	Top	36.68 dBm
25 KHz	Bottom	36.74 dBm
	Middle	36.81 dBm
	Top	36.76 dBm

10.5 Conduct spurious plot

The Worst Case of The Three Channels for Conduct Spurious Emission of @ 12.5KHz**The Worst Case of The Three Channels for Conduct Spurious Emission @ 25KHz**

11 TRANSMITTER FREQUENCY BEHAVIOR**11.1 Provisions Applicable**

Section 90.214

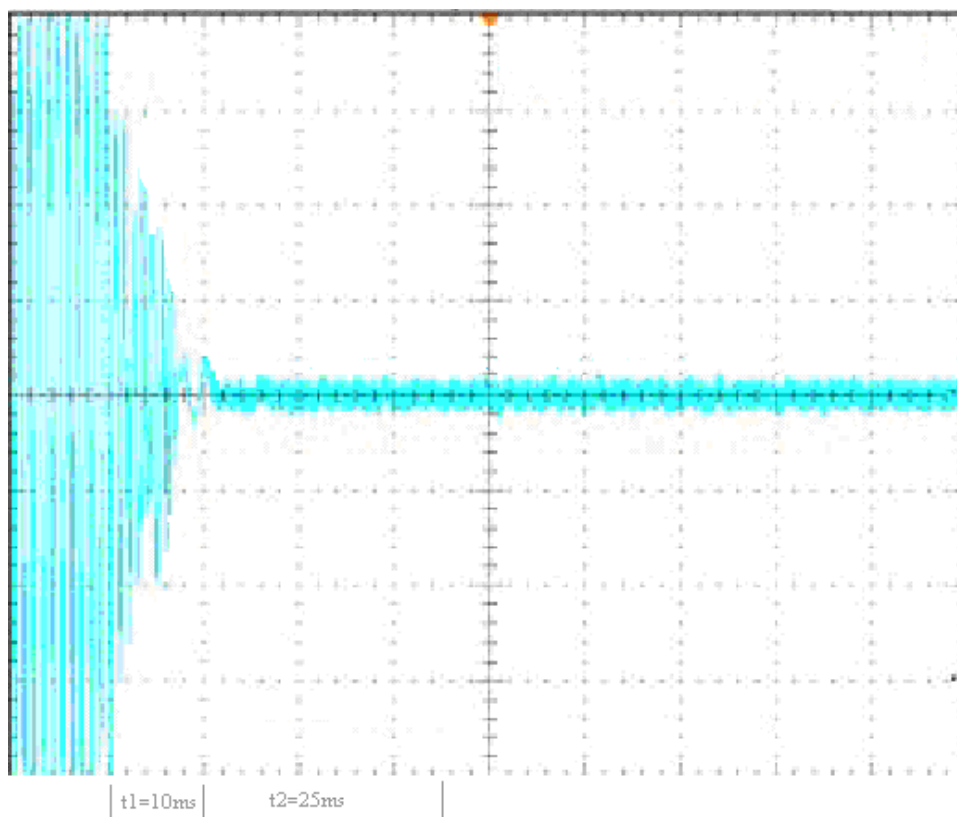
11.2 Test Method

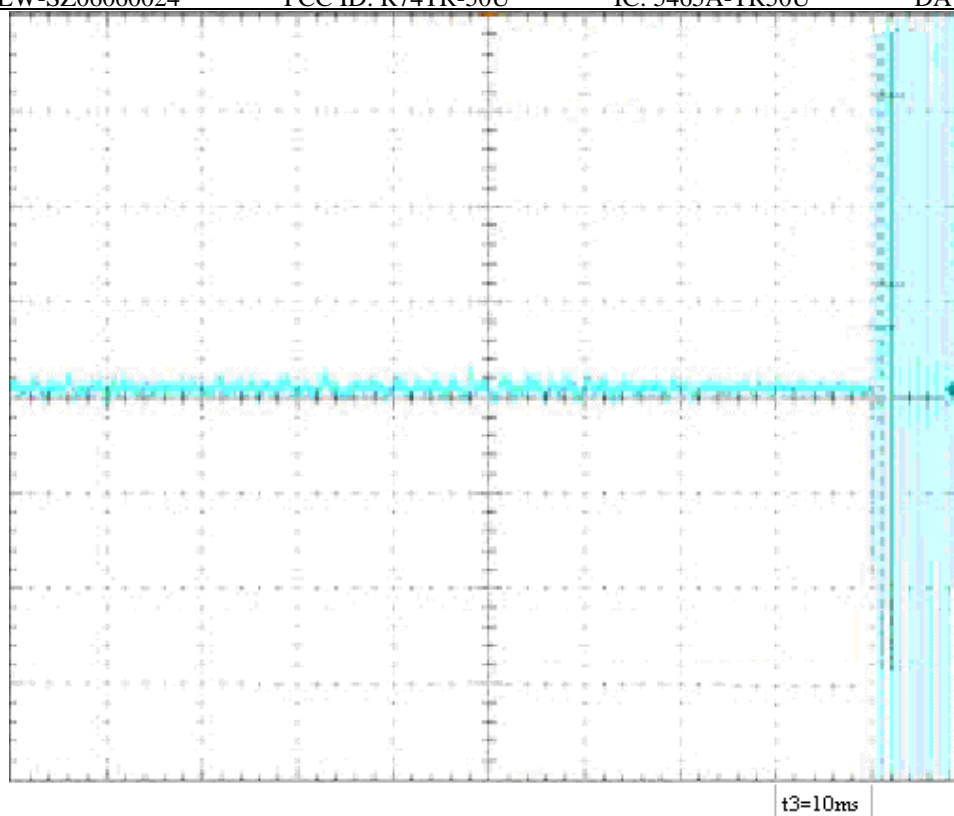
TIA/EIA-603 2.2.19

11.3 Test Instruments

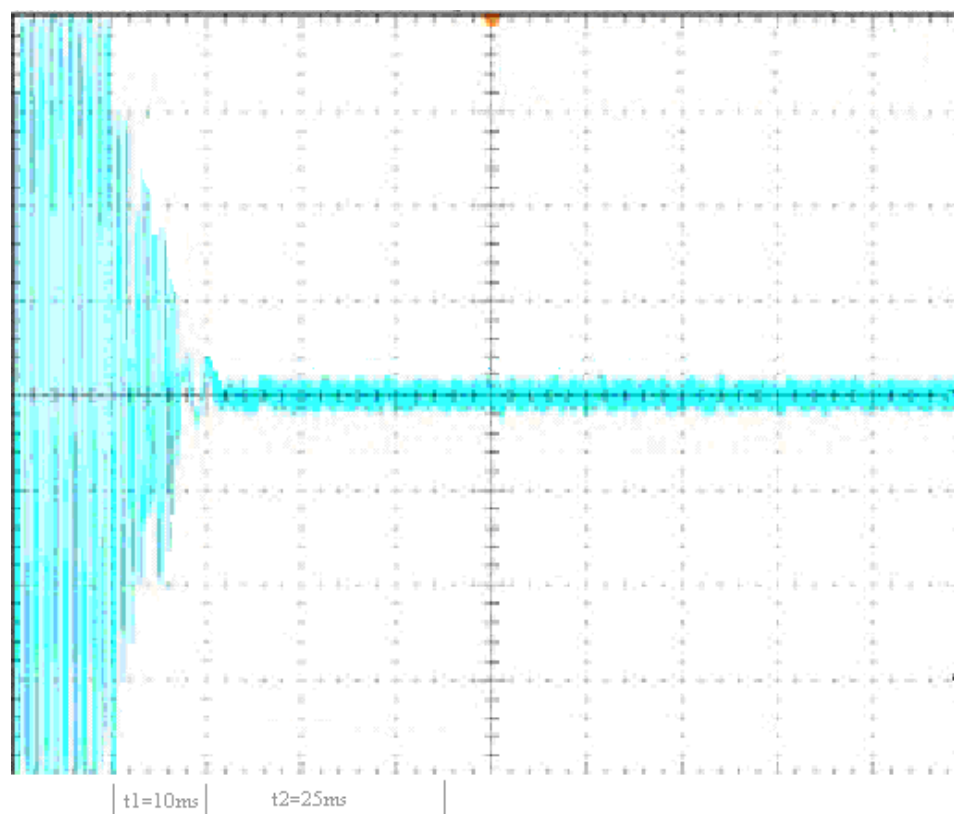
Name of Equipment	Manufacturer	Model	Serial Number	Calibration Due
Signal Generator	Rohde&Schwarz	SMT03	100059	02/01/2007
Storage Oscilloscope	Tektronix	TDS3052	B017447	06/28/2006

11.4 Measure Result

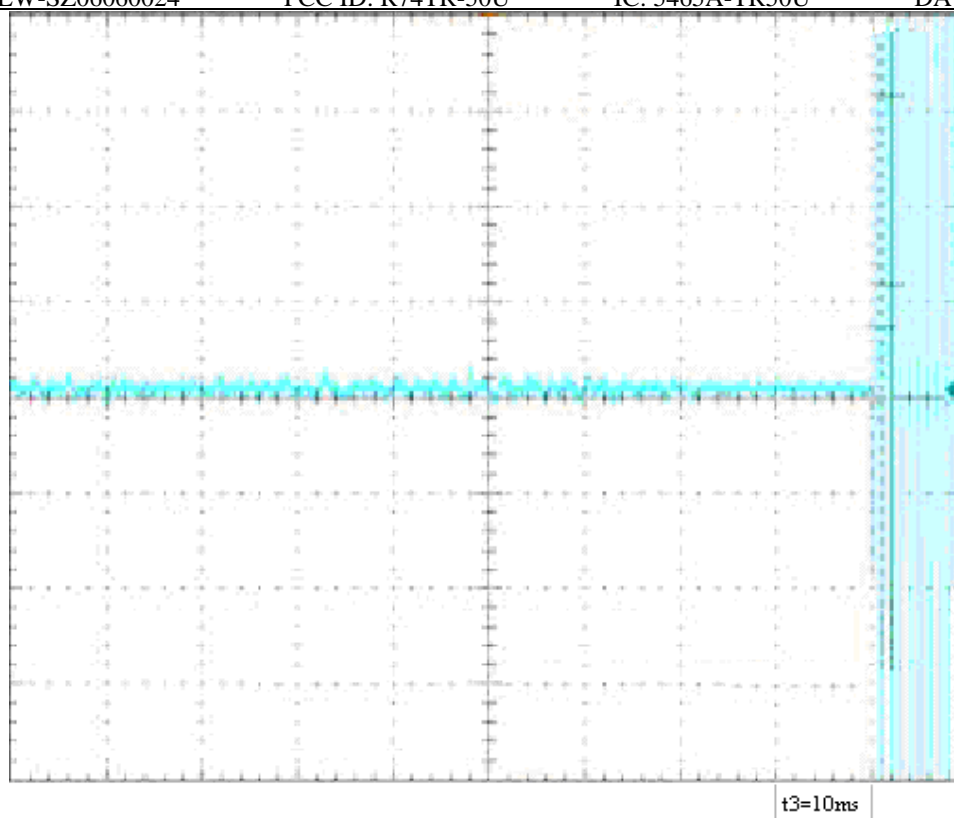
Transmitter Frequency Behaviour @ 25KHz Channel Separation-----Off – On**Transmitter Frequency Behaviour @ 25 KHz Channel Separation-----On - Off**



Transmitter Frequency Behaviour @ 12.5 KHz Channel Separation-----Off – On



Transmitter Frequency Behaviour @ 12.5 KHz Channel Separation-----Off – On



APPENDIX I

PHOTOGRAPHS OF SETUP

Conduction Test Setup



Radiation Test Setup



APPENDIX II

EXTERNAL VIEW OF EUT

Top view of EUT



Bottom view of EUT



Right view of EUT



Left view of EUT



Front view of EUT



Back view of EUT



System view of EUT



The Component of EUT - Mic



The Component of EUT - Frequency Programming Cable for TX



The Component of EUT - Frequency programming Cable for RX



The Option of EUT – Duplex Filter



APPENDIX III

INTERNAL VIEW OF EUT

Detached view of EUT-1



Detached view of EUT-2



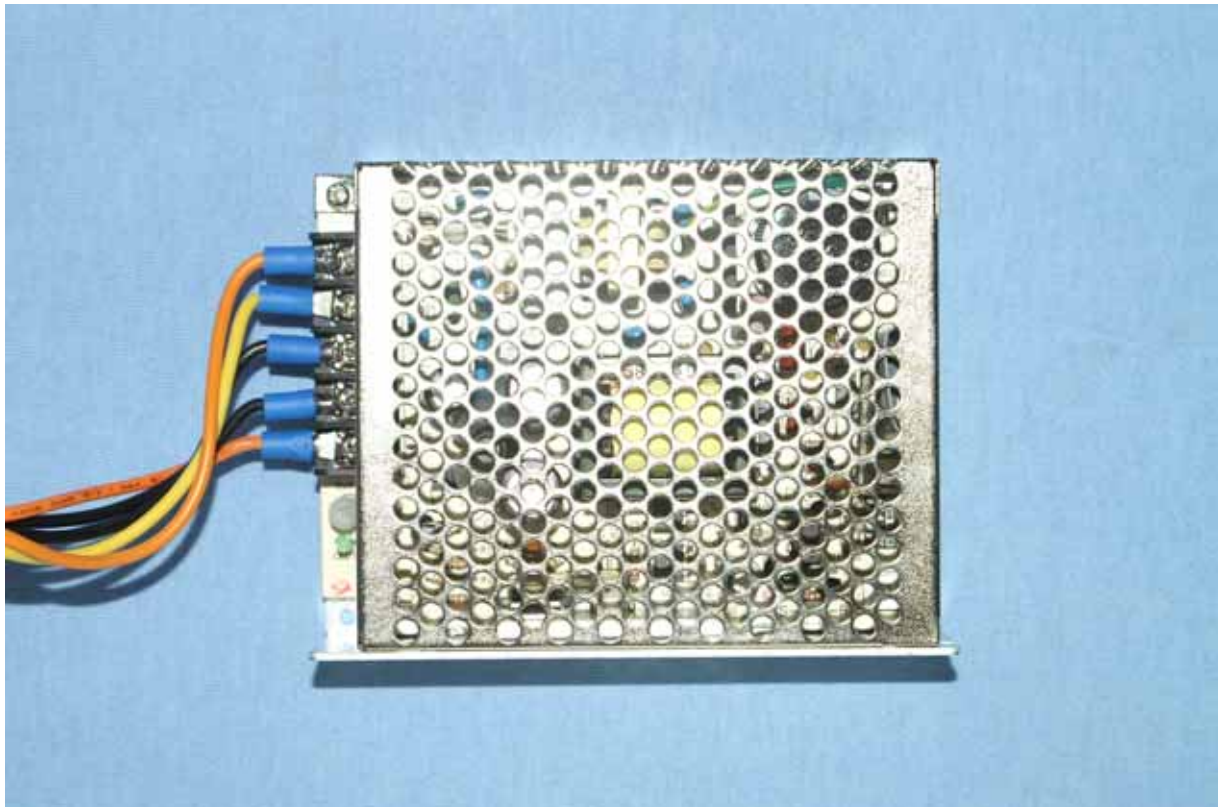
Detached view of EUT-3



Detached view of EUT-4



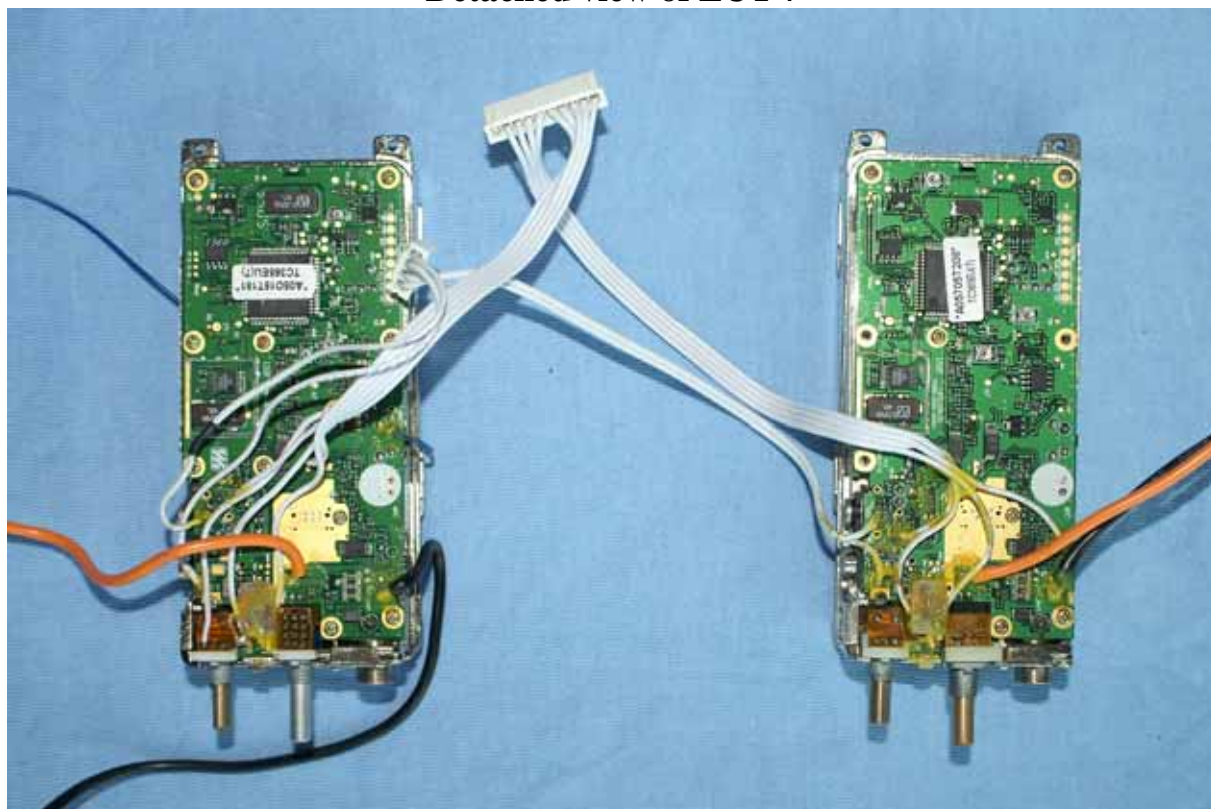
Detached view of EUT-5



Detached view of EUT-6



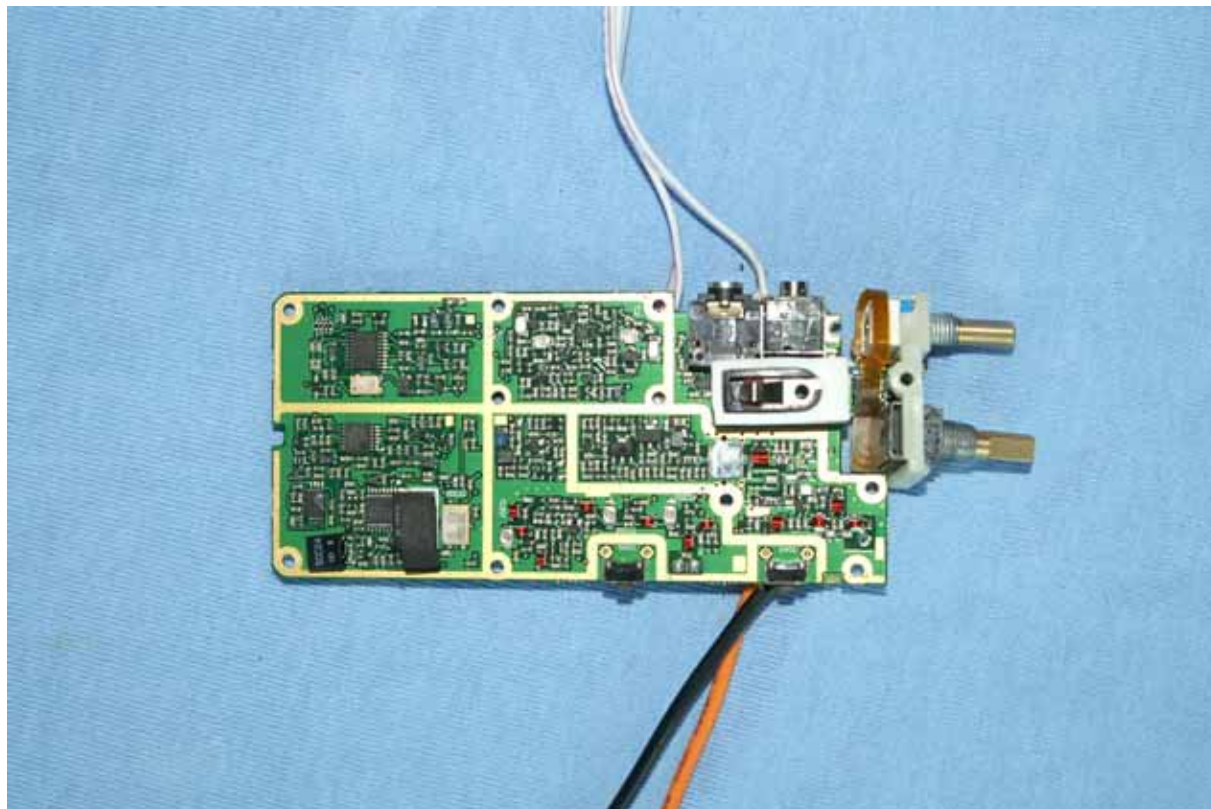
Detached view of EUT-7



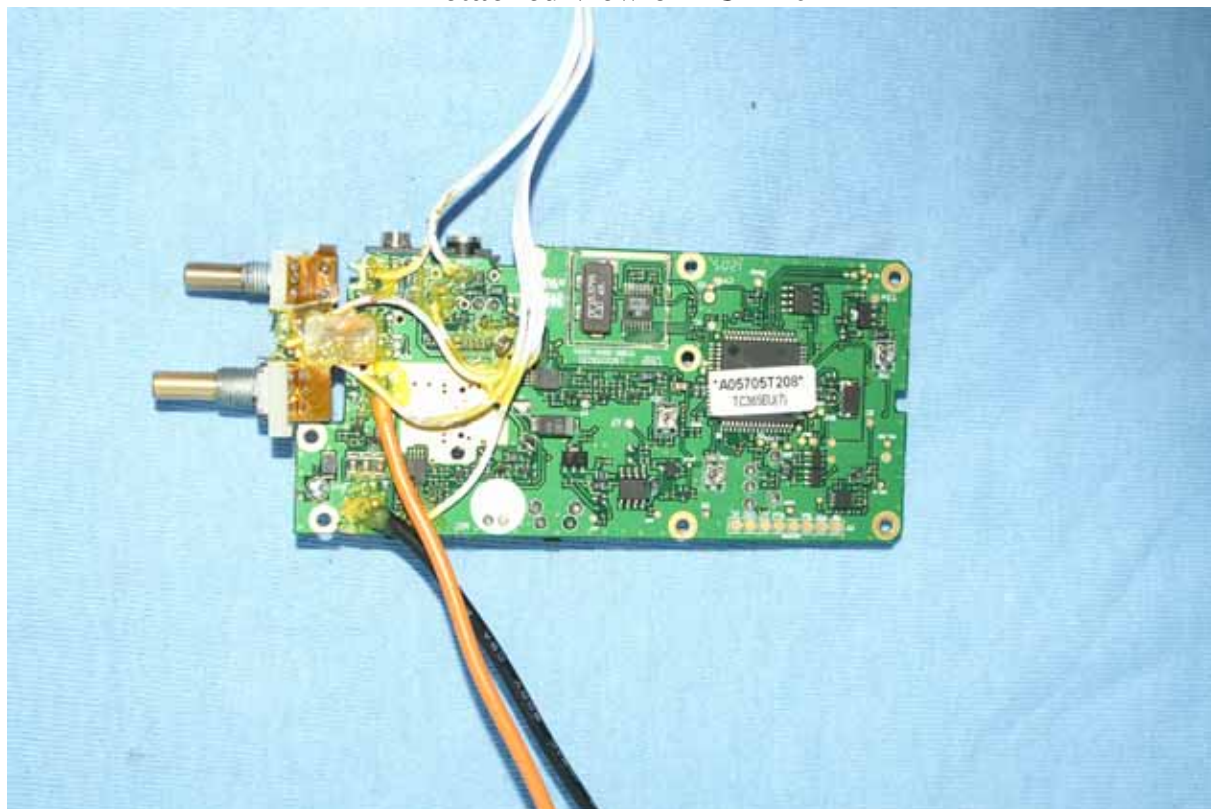
Detached view of EUT-8



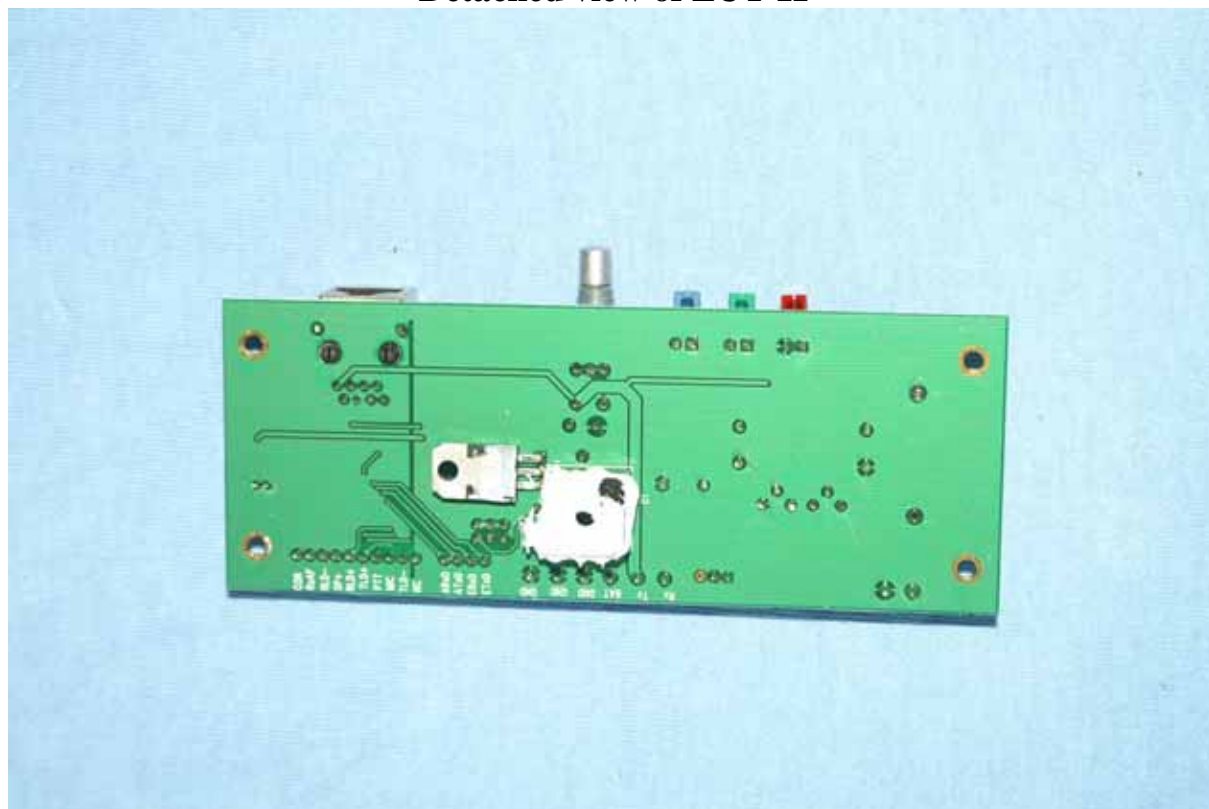
Detached view of EUT-9



Detached view of EUT-10



Detached view of EUT-11



Detached view of EUT-12

