



I-TECH TANK

WiFi Remote For telecontrol
APP-CONTROLLED i-Tech tank
Operating instruction



App Store Google Play

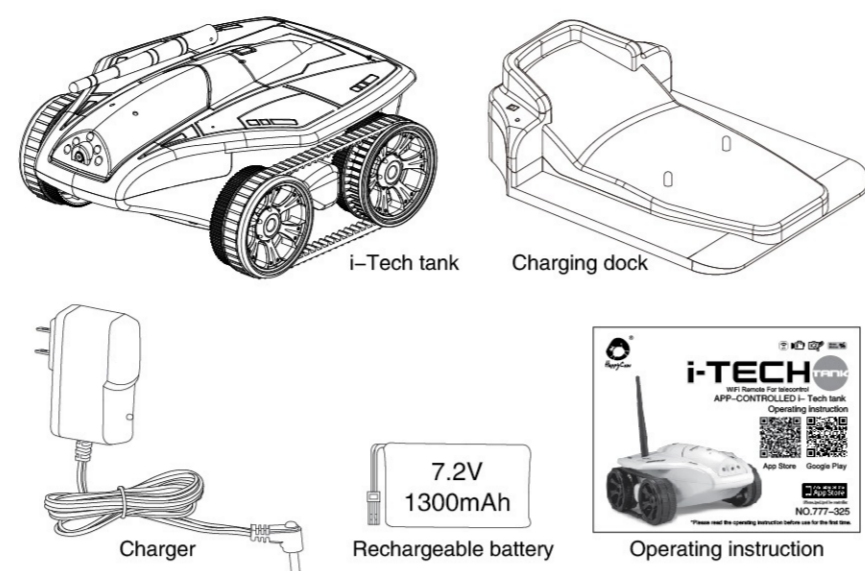


Available on the App Store
NO.777-325

*Please read the operating instruction before use for the first time.

I-TECH TANK

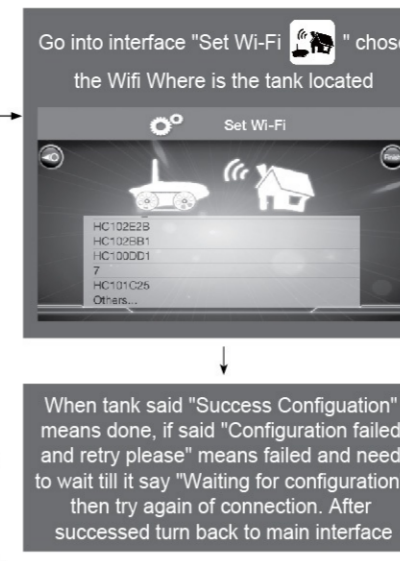
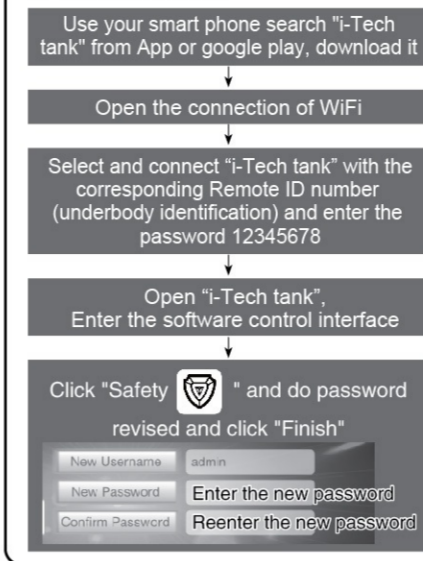
● Parts



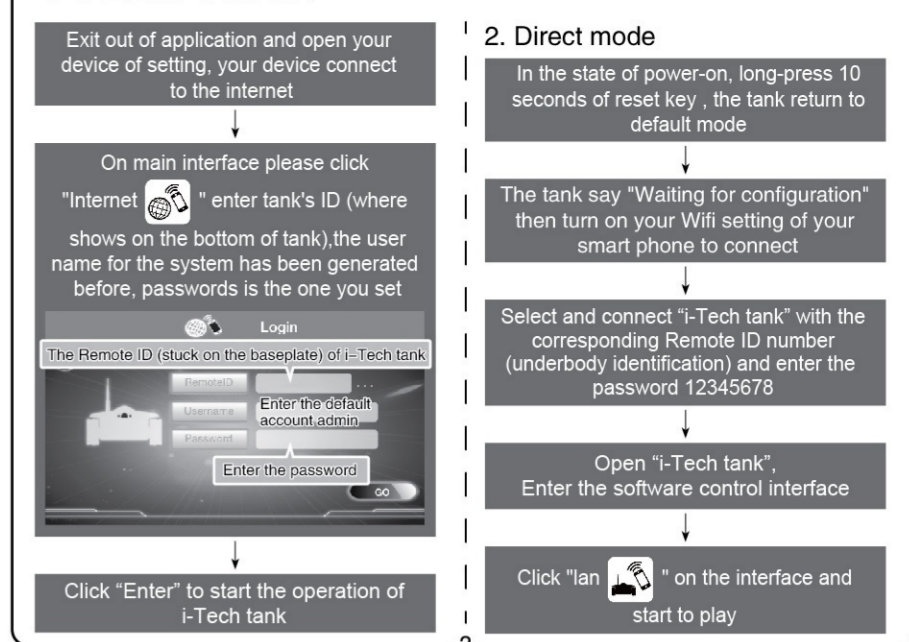
I-TECH TANK

● Operation step

1. Network mode



I-TECH TANK

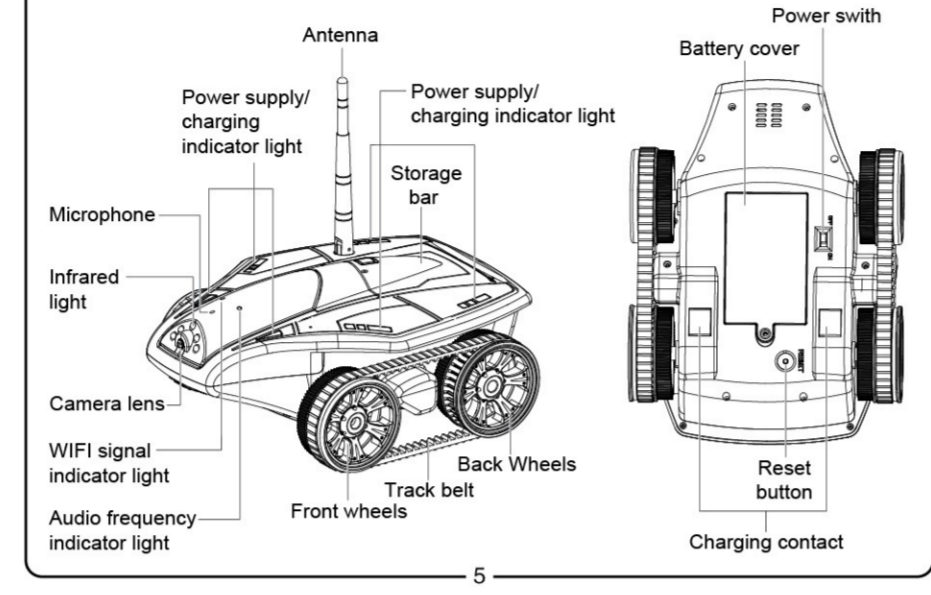


I-TECH TANK

- Remarks:**
- Under network mode, i-Tech tank needs to keep in the state of network connection.
 - Direct connecting mode can be switched to network connecting mode. Restart the i-Tech tank and wait for 15 seconds. After the switch, it cannot turn back to direct connecting mode, and needs to return to the default setting. On starting up condition, long press the reset key for 10 seconds to return to default setting.
 - The password for direct connecting mode is "12345678", the default account of network connecting mode is admin, and the default password is 123. The account cannot be modified, but the enter password can be modified.
 - i-Tech tank can make warning tone: waiting for configuration, Configuration failed and retry please, Success Configuration.
 - Please put away your i-Tech tank ID, in case of forgetting ID for you to enter.
 - Please put away your i-Tech tank ID and password in case of divulging.
 - Every tank has its own ID on the bottom, if more than one tank at the same time open, WiFi search list will appear in multiple ID, please select the tank you want to connection.
 - If your smart phone screen appears the image in front of tank indicating that the device has been properly connected

I-TECH TANK

● Location of parts



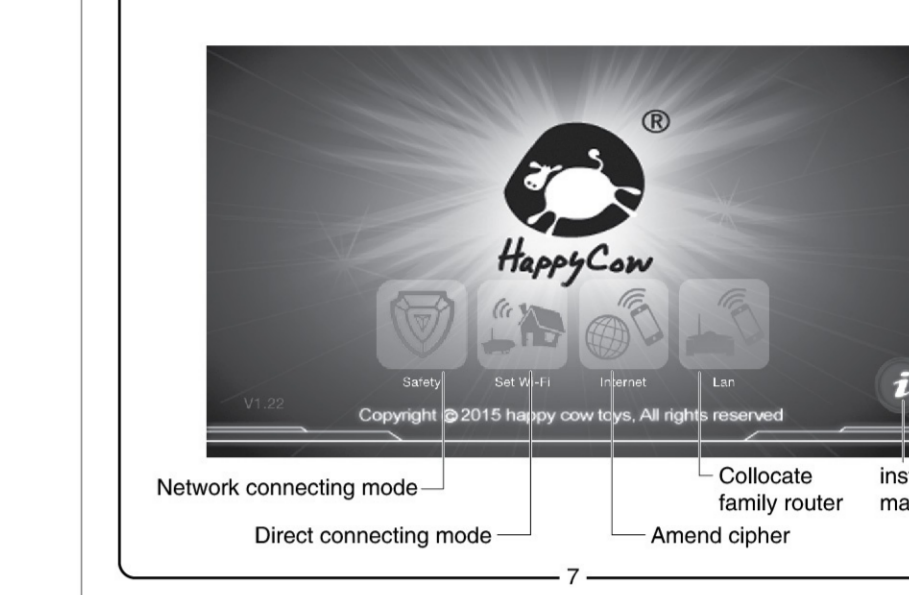
I-TECH TANK

● i-Tech tank Starting interface



I-TECH TANK

● i-Tech tank Selection interface



I-TECH TANK

- Special Notes:**
- When use the tank for the first time, please reset the password for your privacy. Click i-Tech tank, on the interface pls enter into "Safety" to set up your own passwords it should be 3-15 bit and gain reset click "Finish" to complete it.



I-TECH TANK

- When you cannot find the needed WIFI on the WIFI searching list, press "Other...", and enter WIFI account and password by yourself.



I-TECH TANK

- When use the network connecting mode for the first time, please fill in the Remote ID of the i-Tech tank (stuck on the baseplate), account admin and password. Click <GO> to enter the control interface. When the live image appears on the screen of iPod touch, iPhone or iPad, it shows the equipment is correctly connected. If you need to select the original Remote ID, please click "...", to choose, and enter account admin and password.



I-TECH TANK

- i-Tech tank Operate interface instruction**
- Microphone
 - WIFI signal
 - Power
 - Hidden options
 - Move motion mode
 - Interface rotate
 - Auxiliary line
 - Left/right turn
 - Infrared light
 - Trimmer
 - Video camera
 - Camera
 - Back out
 - Viewer
 - Elevator
 - Throttle stick
 - Video clarity



I-TECH TANK

● Function details

Note:
In the Audio open state, you can record the sound of video

- 1. Camera:** Take snapshots, Video camera "OFF", Video camera "ON"
- 2. Video camera:**
- 3. Viewer:** View your files
- 4. Move motion mode:** Move motion mode "OFF", Move motion mode "ON"

I-TECH TANK

- 5. Auxiliary line:** The view interface appears auxiliary line for driving guidance.
- 6. Infrared light:** When the infrared light is switched on, you can observe the surroundings in the dark.

I-TECH TANK

- 7. Audio function:** Accessible to the surrounding sounds near the tank.
- 8. Microphone:** Turn off the Audio and turn on the microphone, press and hold the microphone in the interface to speak, release the hand speak to the end.
- 9. Trimmer:** Press the trimmer right or left if the tank couldn't go forward straightly.

I-TECH TANK

● 10. Power: When battery power is less than 20%, the software pops up warning message.

● 11. Elevator: Manually move the camera lens up and down to capture angles of video.

● Reset: To reset the tank, press the RESET button for five seconds.

WARNING: Camera operates only with the software, use other ways to change the camera angle will damage the tank, affecting the normal operation of the tank!

I-TECH TANK

● Install battery

- Use crossing screwdriver to wrench the screws on the chassis of the i-spy tank in anti-clockwise direction, open the battery cover.
- Put the 7.2V rechargeable batteries into battery container with correct electrode.
- Close the battery cover and screw it in clockwise direction.

I-TECH TANK

● Charge

Put the tank into the recharging stock first, then put the charger into the outlet, then put the plug into the charging stock as shown in the picture, then the charging light on the charging stock will be on, and the charging light of the i-Tech tank body will be on. After the charging is complete in 150 minutes, the charging light will be permanently on.

Note:

- When charging, please pull the switch of the charging source of the tank to "ON" position.
- Only attached charger is allowed to charge for the product.
- Please do not disassemble the battery.
- When charging, please keep away from children in case of accidents.
- Please use the special battery from the factory for charging, in case of any damage to the tank or explosion.
- Please do not buy any charger or charging stock not manufactured by the factory to charge for the tank, in case of any damage to the battery or battery explosion.
- If you do not use i-Tech tank for a long time, please pull the switch of the charger of the tank body to "OFF" position and remove the battery in case of accidents.

I-TECH TANK

● Control methods

Control range: The control range of the i-Tech tank is about 18 meters. Please avoid to overstep this control range, otherwise the i-Tech tank will be out of control. Play time: On a full charge condition, the i-Tech tank could be used for about 50 minutes.

- 1. Forward:** Arrow direction up as illustrated to pull forward / backward the rocker, and the i-Tech tank will move forward.
- 2. Backward:** Arrow direction down as illustrated to pull forward / backward the rocker, and the i-Tech tank will move backward.
- 3. Turn left:** Pull the rocker to the left / right as illustrated, and i-Tech tank will turn to the left.
- 4. Turn right:** Pull the rocker to the left / right as illustrated, and i-Tech tank will turn to the right.

I-TECH TANK

● Move motion mode

Switch to "move motion" mode, push up the throttle stick, swing your hands as the following indicating direction.

- 1. Left turn**
- 2. Right turn**
- 3. Forward**
- 4. Backward**

I-TECH TANK

● Video

The i-Tech tank can record the video of your driving route and save it as a file, then you can replay it on your device screen.

- Press the "📷" button and drive the "i-Tech tank" on the route you want to record.
- After you complete your route, press the "📷" button again to save the record.
- Press the "📺" button to view the file. Select the file, it will be played on your device interface.

I-TECH TANK

● Camera

The "i-Tech tank" can take snapshots. Press the "📷" button to take a snapshot, the photo will be saved in the Photos Folder on your device.

● Cautions

- When the battery is low in the "i-Tech tank", the control distance will be reduced.
- The biggest control radius of the "i-Tech tank" is 18 meters, please uses within this area, otherwise the "i-Tech tank" will be out of control.
- If the "i-Tech tank" was damaged, distortion, please repaired in time.
- Detachable small parts should be stored safely and out of reach of children.
- If found voice gets smaller, please replace the battery.
- Clean please use dry cloth to wipe clean.
- After the demolition of packing materials, please don't discarded everywhere, so as not to pollute the environment and health.
- Do not expose to fire or high temperatures, moist storage.
- Should the battery get wet, wipe immediately with a soft dry cloth.
- Please remove the battery of the and turn the power of switch to "OFF" position when it is not used for a long time.
- Do not operate the tank when it's charging!
- The RF exposure statements with minimum distance is 20cm.

I-TECH TANK

● Battery use caution proceeding

- Take out and load cell: first, open the battery cover, remove the used batteries; Will be marked on the battery according to the battery compartment of the positive and negative Electrode direction, in the battery box, then cover the battery case cover.
- Different types of batteries or new and used batteries are not to be mixed.
- The same type battery can use or recommend model equivalent.
- Batteries are to be inserted with the correct polarity.
- Exhausted batteries are to be remove from the toy.
- The supply terminals are not to be short-circuited.

● Problem - Solving

Symptom	Cause	Correction
Wheel can't move.	● ON/OFF switch is OFF. ● Weak battery.	● Set switch to "ON". ● Put new battery or change the battery.
Suddenly stop.	● Weak power.	● Put new battery or change the battery.
Remote control can not connect the tank	● Check if the tank is correctly connected to the router. ● Check if the cellphone is connected to the Network	● Reconnect

Caution: The user is cautioned that changes or modifications not expressly approved by the party responsible for compliance could void the user's authority to operate the equipment.

This device complies with Part 15 of the FCC Rules. Operation is subject to the following two conditions: (1) this device may not cause harmful interference, and (2) this device must accept any interference received, including interference that may cause undesired operation.

NOTE: This equipment has been tested and found to comply with the limits for a Class B digital device, pursuant to Part 15 of the FCC Rules. These limits are designed to provide reasonable protection against harmful interference in a residential installation. This equipment generates, uses and can radiate radio frequency energy and, if not installed and used in accordance with the instructions, may cause harmful interference to radio communications. However, there is no guarantee that interference will not occur in a particular installation. If this equipment does cause harmful interference to radio or television reception, which can be determined by turning the equipment off and on, the user is encouraged to try to correct the interference by one or more of the following measures:

- Reorient or relocate the receiving antenna.
- Increase the separation between the equipment and receiver.
- Connect the equipment into an outlet on a circuit different from that to which the receiver is connected.
- Consult the dealer or an experienced radio/TV technician for help.

FCC Radiation Exposure Statement:
This equipment complies with FCC radiation exposure limits set forth for an uncontrolled environment. This equipment should be installed and operated with a minimum distance of 20cm between the radiator and your body.
This transmitter must not be co-located or operating in conjunction with any other antenna or transmitter.