

[WiFi ANTENNAS](#)

**2.4 GHz 2.2 dBi Reverse Polarity SMA "Rubber Duck" Wireless LAN Antenna HyperGain® HG2402RD-RSF**



Select By Frequency

- 900 MHz
- 1.9 GHz
- 2.3 GHz
- 2.4 GHz
- 2.6 GHz
- 4.9 GHz
- 5.3 GHz
- 5.8 GHz

**Features**

- Compact size, only 4.7" long
- Tilt and swivel design
- RP-SMA Connector
- 802.11b, 802.11g and Bluetooth® compatible

[Wireless Audio/Video](#)

- 2.4 GHz

[Mobile Antennas](#)

- Antenna Kits
- Mobile Mounts
- Antennas

**Order**

Part Number Wholesale-Direct Pricing Buy Online

HG2402RD-RSF	Quantity 1-4: <b>\$6.95</b> each	<a href="#">▶ Add to Cart</a>
	Quantity 5-9: <b>\$6.45</b> each	
	Quantity 10+: <b>\$6.25</b> each	

[Antenna Accessories](#)

- Antenna Mounting Kits

[Frequency Converters](#)

- 2.4 to 5.8 GHz 2-Way

[Main Menu](#)

- **NEW PRODUCTS**
- Amplifiers
- Antennas
- Cable Products
- Lightning Protectors
- Connectors
- Adapters
- PoE
- Wireless Kits
- Signal Splitters
- Frequency Converters
- Signal Filters
- Power Supplies
- Tools
- Accessories
- Weatherproof Enclosures
- OEM Products
- Site Map
- **SPECIALS & SALE ITEMS**
- **CLEARANCE ITEMS**

**Description**

This compact 2.4GHz omnidirectional "rubber-duck" WiFi antenna provides broad coverage and 2.2 dBi gain. It is a coaxial sleeve design with an omni-directional pattern. It is ideally suited for IEEE 802.11b and 802.11g wireless LANs, Bluetooth® and other WLAN applications.

Only 4.7" long, this flexible antenna features a tilt-and-swivel reverse-polarity SMA plug connector, allowing them to be used vertically, at a right angle, or any angle in-between. It is suitable as a replacement antenna for many access points and radios that are equipped with reverse-polarity SMA connectors including D-Link®, Linksys® WET11 and others (Note: This RF antenna is used as a "replacement" antenna rather than a "range extender" antenna. It should yield similar range to most radio's stock antennas)

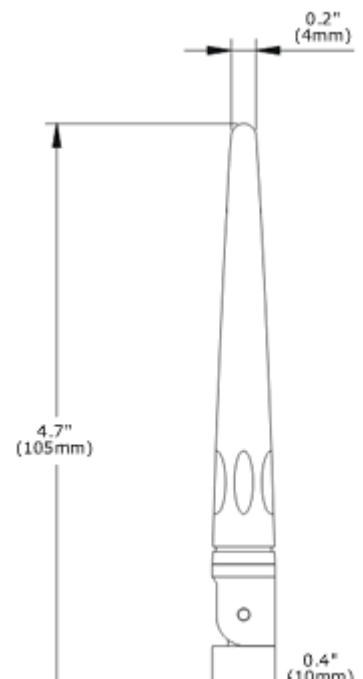
**Specifications**

**Electrical Specifications**

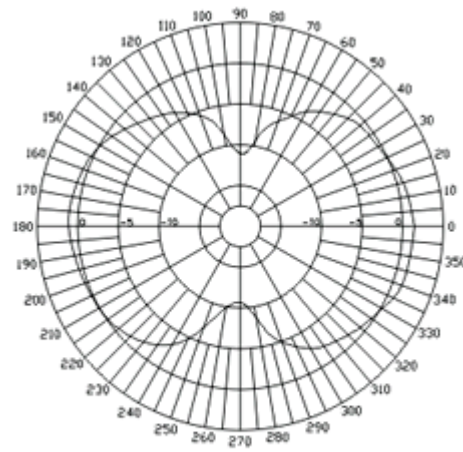
<b>Frequency</b>	2400-2500 MHz
<b>Gain</b>	2.2 dBi
<b>Impedance</b>	50 Ohm
<b>VSWR</b>	< 2.0

**Mechanical Specifications**

<b>Weight</b>	0.52 oz. (15 g)
<b>Length</b>	4.7" (105 mm)
<b>Diameter</b>	0.4" (10 mm)
<b>Finish</b>	Matte Black
<b>Connector</b>	Reverse Polarity SMA Plug
<b>Operating Temperature</b>	-40° C to to 85° C (-40° F to 185° F)
<b>Polarization</b>	Vertical



### Antenna Gain Pattern



**Vertical**

### Guaranteed Quality

This product is backed by Hyperlink's Limited Warranty

[Back](#)

[Top](#)

[Email Us](#) • tel: 561-995-2256 • fax: 561-995-2432 hours: 9:00am - 7:00pm EST

[contact us](#) | [support](#) | [privacy policy](#) | [site map](#) | copyright © 2004 HyperLink Technologies, Inc. All rights reserved.