

FIGURE 1
GPON SFU (M/N: 7281G)
COVER REMOVED



FIGURE 2
GPON SFU (M/N: 7281G)
MAIN BOARD (COMPONENT SIDE)

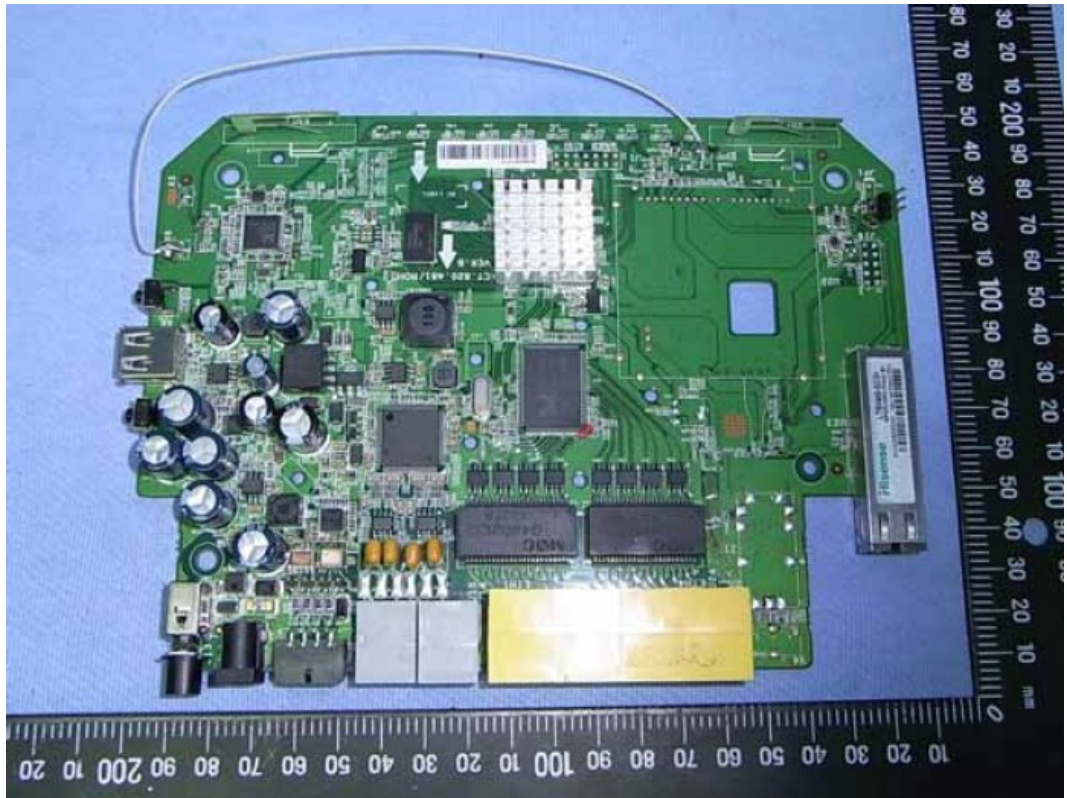


FIGURE 3
GPON SFU (M/N: 7281G)
MAIN BOARD (SOLDERED SIDE)



FIGURE 4
GPON SFU (M/N: 7281G)
CHIPS AND CRYSTAL ON MAIN BOARD

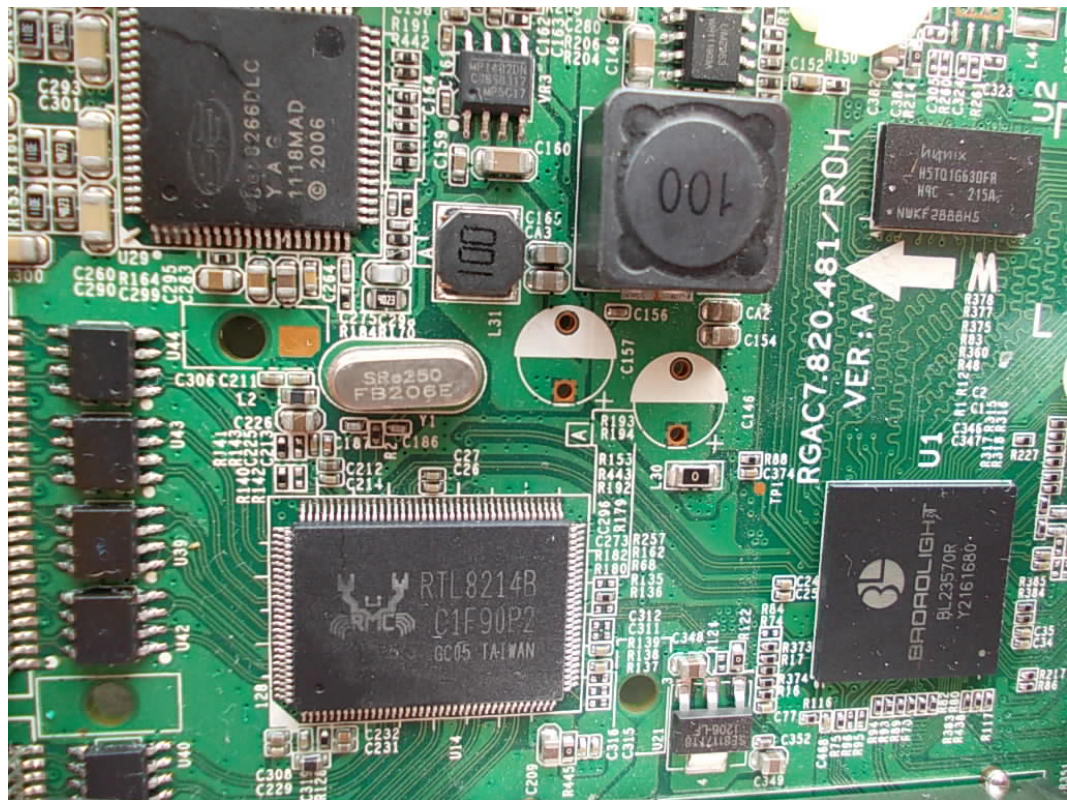


FIGURE 5
GPON SFU (M/N: 7281G)
RF PART

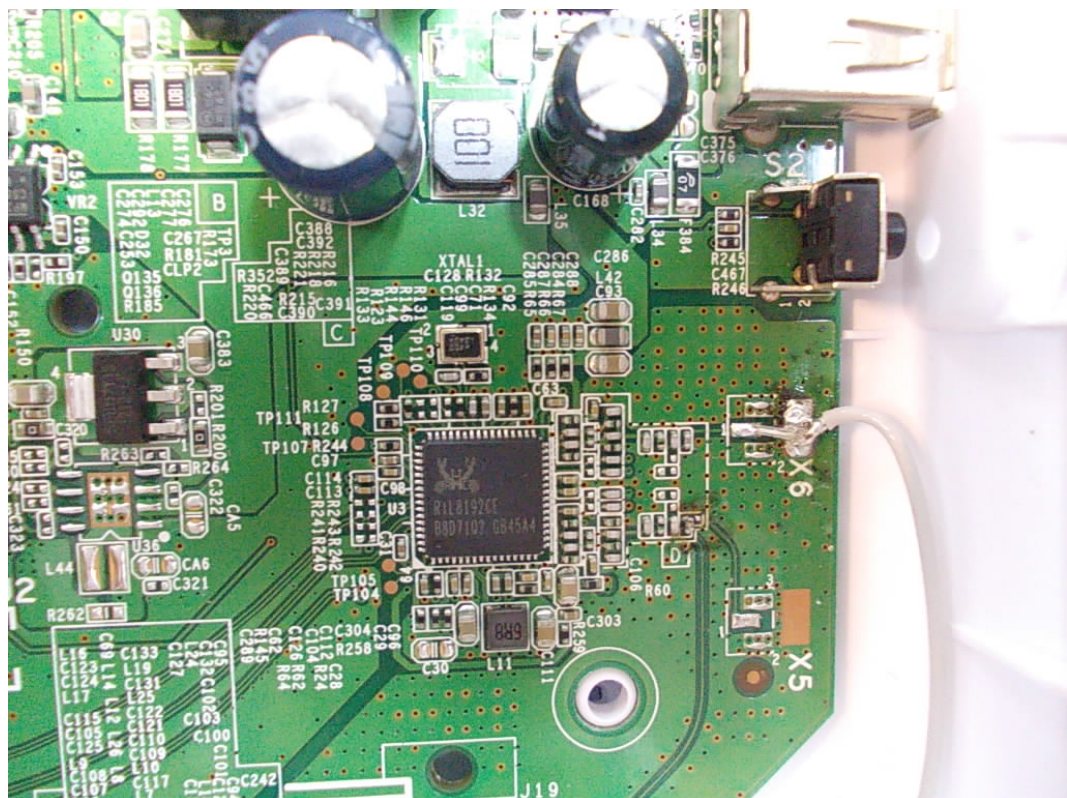


FIGURE 6
GPON SFU (M/N: 7281G)
ANT1

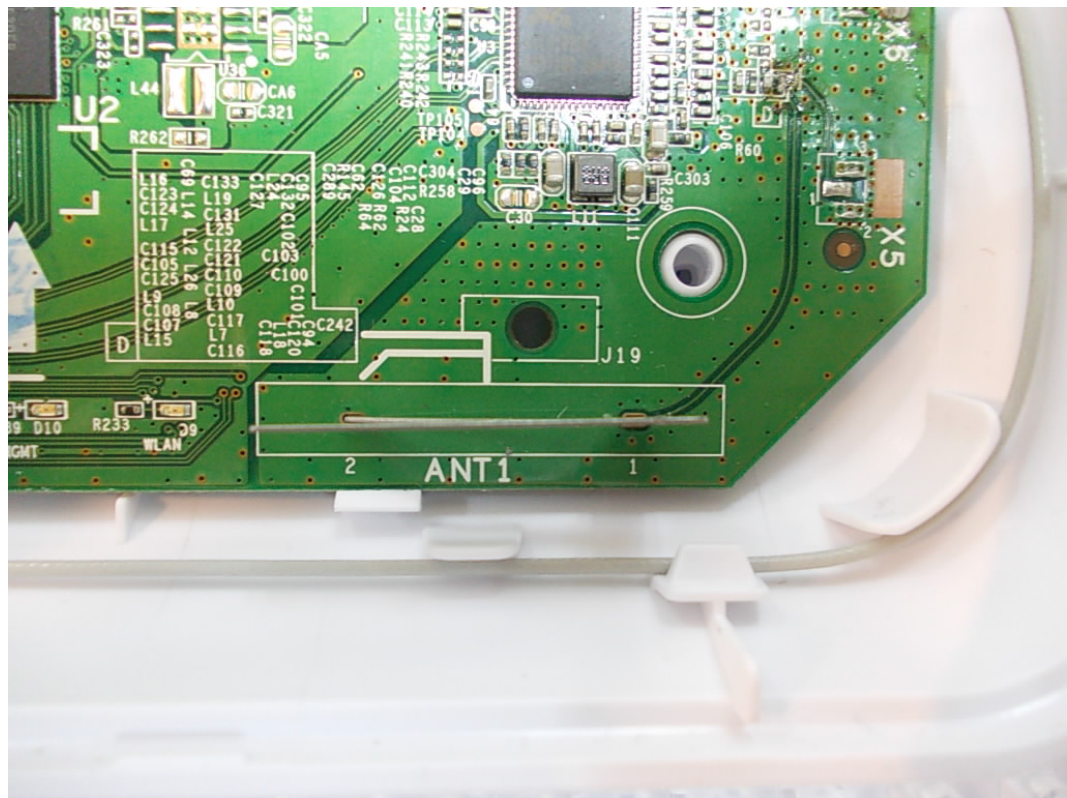


FIGURE 7
GPON SFU (M/N: 7281G)
ANT2

