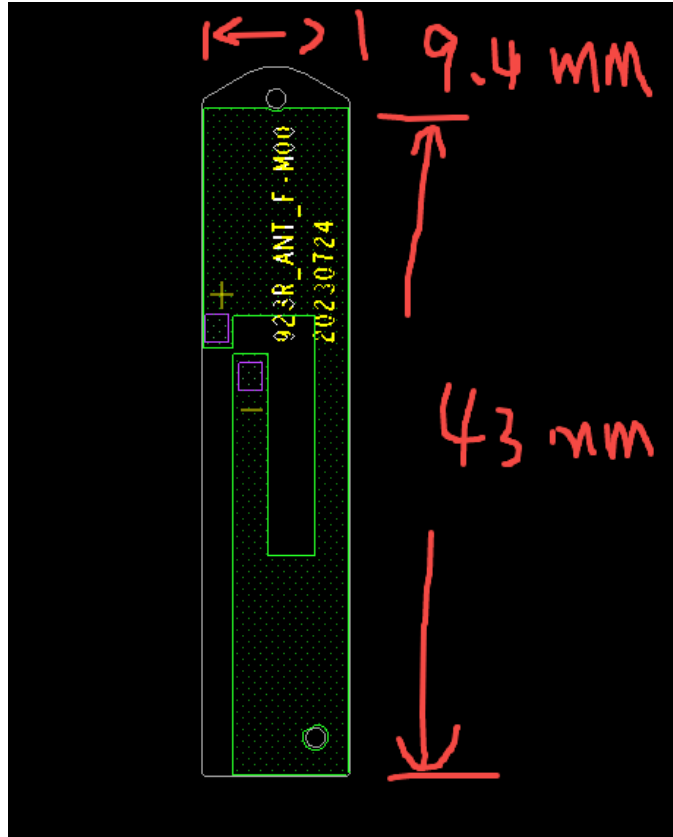


R9 antenna specification

Description	
Model	R9
Operation Band	Bluetooth / Wifi2.4G/ Wifi5G
Frequency	2400MHz-2500MHz、 5180-5320 MHz (W52、 W53) 、 5500-5825MHz (W56)
Gain	7.25dBi、 6.5dBi、 8.16dBi
Antenna Type	Internal antenna with PCB
Testing Equipment	
VNA	E5071C
Chamber	Guangping Chamber system
Time	2023-9-14

1 Antenna pattern



2 Passive data

2.1 S11

Fre(MHz)	2400	2450	2500	5150	5520	5850
Result(dB)	-13	-25	-16	-10	-30	-15

2.2 Efficiency & Gain

Freq (MHz)	Effi (%)	Effi (dB)	Gain (dBi)	Freq (MHz)	Eff (%)	Eff (dB)	Gain (dBi)
2400	77.73	-1.09	7.2	5200	45.21	-3.45	6.14
2410	84.58	-0.73	7.25	5250	46.1	-3.36	5.66

2420	85.8	-0.66	7.18		5320	58.6	-2.32	6.5
2430	79.33	-1.01	6.69		5350	53.98	-2.68	6.21
2440	91.26	-0.4	7.1		5400	45.37	-3.43	5.51
2450	78.43	-1.06	6.12		5450	46.31	-3.34	5.93
2460	87.73	-0.57	6.64		5500	54.05	-2.67	6.44
2470	70.88	-1.49	5.72		5600	59.65	-2.24	7.92
2480	80.8	-0.93	6.27		5700	62.47	-2.04	7.41
2490	68.36	-1.65	5.54		5800	76.01	-1.19	8.16
2500	76.03	-1.19	5.9					

2.3 Radiation Pattern

