



37" HD Soundbar
+ Wireless Subwoofer

Safety Instructions & Warnings

CAUTION
RISK OF ELECTRIC SHOCK
DO NOT OPEN

WARNING: To reduce the risk of electric shock, do not remove cover (or back). No user-serviceable parts inside. Refer servicing to qualified service personnel.

ATTENTION
RISQUE D'ÉLECTROCUTION
NE PAS OUVRIR



The exclamation point within an equilateral triangle is intended to alert the user to the presence of important operating and maintenance (servicing) instructions in the literature accompanying the appliance.



The lightning flash with arrowhead symbol, within an equilateral triangle, is intended to alert the user to the presence of un-insulated "dangerous voltage" within the product's enclosure that may be of sufficient magnitude to constitute a risk of electric shock to persons.



This symbol indicates that this product incorporates double insulation between hazardous mains voltage and user accessible parts.

Important Safety Instructions

- Read these Instructions.
- Keep these Instructions.
- Heed all Warnings.
- Follow all instructions.
- Do not use this apparatus near water.
- Clean only with a dry cloth.
- Do not block any ventilation openings. Install in accordance with the manufacturer's instructions.
- Do not install near any heat sources such as radiators, heat registers, stoves, or other apparatus (including amplifiers) that produce heat.
- Do not defeat the safety purpose of the polarized or grounding - type plug. A polarized plug has two blades with one wider than the other. A grounding type plug has two blades and a third grounding prong. The wide blade or the third prong are provided for your safety. When the provided plug does not fit into your outlet, consult an electrician for replacement of the obsolete outlet.
- Protect the power cord from being walked on or pinched particularly at plugs, convenience receptacles, and the point where they exit from the apparatus.
- Only use attachments/accessories specified by the manufacturer.
- Unplug this apparatus during lightning storms or when unused for long periods of time.
- Refer all servicing to qualified service personnel. Servicing is required when the apparatus has been damaged in any way, such as power-supply cord or plug is damaged, liquid has been spilled or objects have fallen into the apparatus, the apparatus has been exposed to rain or moisture, does not operate normally, or has been dropped.
- Use only with a cart, stand, tripod, bracket, or table specified by the manufacturer, or sold with the apparatus. When a cart is used, use caution when moving the cart/apparatus combination to avoid injury from tip-over.



FCC Warnings

Warning: Changes or modifications to this unit not expressly approved by the party responsible for compliance could void the user's authority to operate the equipment.

NOTE: This equipment has been tested and found to comply with the limits for a Class B digital device, pursuant to Part 15 of the FCC Rules. These limits are designed to provide reasonable protection against harmful interference in a residential installation. This equipment generates, uses, and can radiate radio frequency energy and, if not installed and used in accordance with the instructions, may cause harmful interference to radio communications. However, there is no guarantee that interference will not occur in a particular installation. If this equipment does cause harmful interference to radio or television reception, which can be determined by turning the equipment off and on, the user is encouraged to try to correct the interference by one or more of the following measures:

- Reorient or relocate the receiving antenna.
- Increase the separation between the equipment and receiver.
- Connect the equipment into an outlet on a circuit different from that to which the receiver is connected.
- Consult the dealer or an experienced radio/TV technician for help.

Additional Warnings and Precautions

- **CAUTION: TO PREVENT ELECTRIC SHOCK, MATCH WIDE BLADE OF PLUG TO WIDE SLOT, FULLY INSERT.**
- Mains plug is used as disconnect device and it should remain readily operable during intended use. In order to disconnect the apparatus from the mains completely, the mains plug should be disconnected from the mains socket outlet completely.
- **CAUTION:** Use of controls or adjustments or performance of procedures other than those specified may result in hazardous radiation exposure.
- **WARNING:** Changes or modifications to this unit not expressly approved by the party responsible for compliance could void the user's authority to operate the equipment.
- **WARNING:** Do not place this unit directly onto furniture surfaces with any type of soft, porous, or sensitive finish. As with any rubber compound made with oils, the feet could cause marks or staining where the feet reside. We recommend using a protective barrier such as a cloth or a piece of glass between the unit and the surface to reduce the risk of damage and/or staining.
- **WARNING:** Use of this unit near fluorescent lighting may cause interference regarding use of the remote. If the unit is displaying erratic behavior move away from any fluorescent lighting, as it may be the cause.
- **WARNING:** Shock hazard - Do Not Open.
- Caution and marking information is located at the rear or bottom of the apparatus.
- **WARNING:** To reduce the risk of fire or electric shock, do not expose this apparatus to rain, moisture, dripping, or splashing.
- Objects filled with liquids, such as vases, shall not be placed on the apparatus.
- **CAUTION:** Danger of explosion if battery is incorrectly replaced. Replace only with the same or equivalent type.
- **WARNING:** There is a danger of explosion if you attempt to charge standard Alkaline batteries in the unit. Only use rechargeable NiMH batteries.
- Battery shall not be exposed to excessive heat such as sunshine, fire or the like.
- Keep new and used batteries away from children. If the battery compartment does not close securely, stop using the product and keep it away from children.
- If you think batteries might have been swallowed or placed inside any part of the body, seek immediate medical attention.
- Do not mix old and new batteries.
- Completely replace all old batteries with new ones.
- Do not mix alkaline, standard (carbon-zinc), or rechargeable (ni-cad, ni-mh, etc) batteries.
- Batteries should be recycled or disposed of as per state and local guidelines.
- **WARNING:** This product may contain chemicals known to the State of California to cause birth defects, or other reproductive harm (California Prop 65). Wash hands after handling.
- This product meets and complies with all Federal regulations.
- This equipment complied with FCC radiation exposure limits set forth for an uncontrolled environment. This equipment should be installed and operated with minimum distance 20cm between the radiator your body.

Table of Contents

| | |
|--|-----------|
| Setup | 5 |
| Features & Specifications | |
| Includes | |
| Power | |
| Remote Batteries | |
| Orientation | 6 |
| Rear View | |
| Speaker Inputs Detail | |
| Front View | |
| Speaker Controls (Right Side) | |
| Function & Media Source Indicators | |
| Remote | 8 |
| Bluetooth Wireless | 9 |
| Pairing to a Bluetooth Device and Playing Audio Wirelessly | |
| Audio Inputs | 10 |
| Aux In (Stereo RCA Inputs) | |
| Optical Input | |
| Line In | |
| Subwoofer | 12 |
| Connecting the Wireless Subwoofer | |
| Connecting to a Wired Subwoofer | |
| Learn Feature | 13 |
| What is the Learn Feature? | |
| Using the Learn Feature | |
| Company Information | 14 |
| Contact Information | |
| International Support | |
| Warranty | |

Setup

Features & Specifications

- 37" length
- Wireless subwoofer
- Supports Bluetooth
- Wireless range: 60 ft.
- 2.1 channel stereo sound
- Full-function remote with learning capability
- Optical digital audio input
- Line In (3.5mm audio input)
- Aux In (RCA stereo audio inputs)
- Subwoofer output

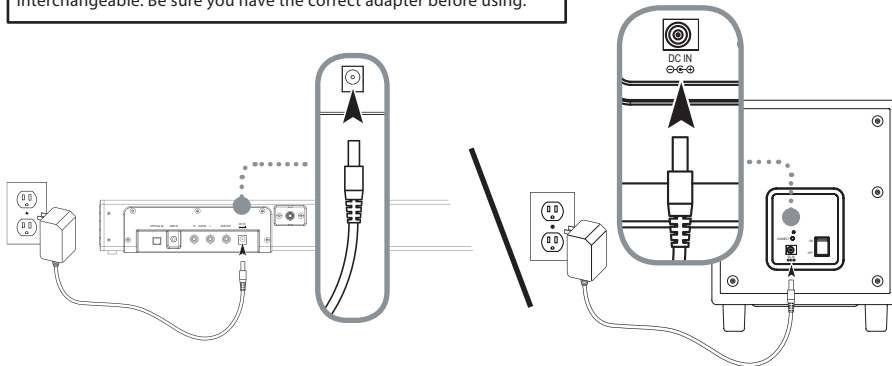
Includes

- Remote control: requires 2 AAA batteries (included)
- Optical audio cable
- 2 AC/DC power adapters:
1 soundbar, 1 subwoofer
- Wall-mount hardware and instructions

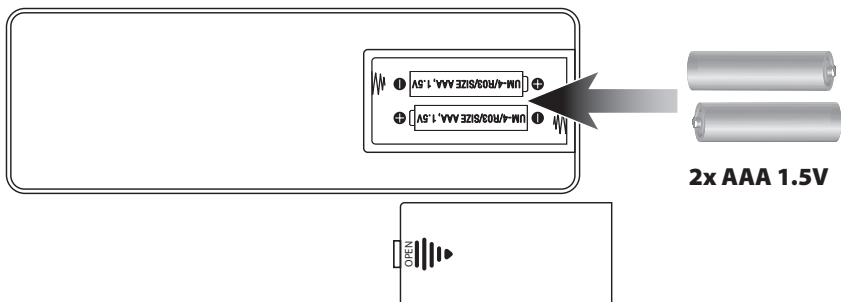
Power

On both the soundbar and the subwoofer, plug the power cord (included) into the DC Input on the back of the unit and a standard wall outlet.

NOTE: The power adapters for the soundbar and the subwoofer are NOT interchangeable. Be sure you have the correct adapter before using.

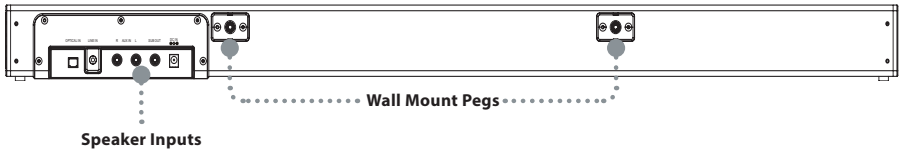


Remote Batteries

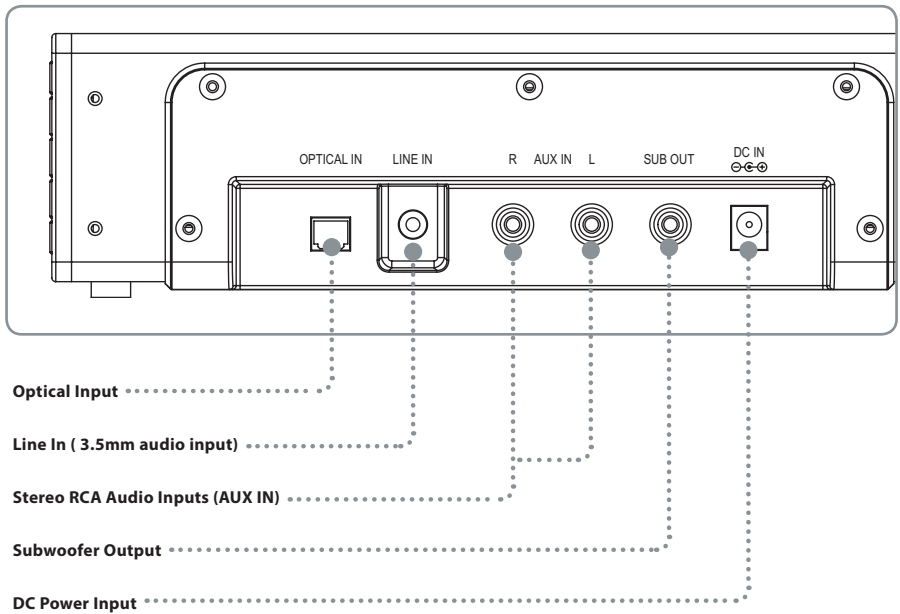


Orientation

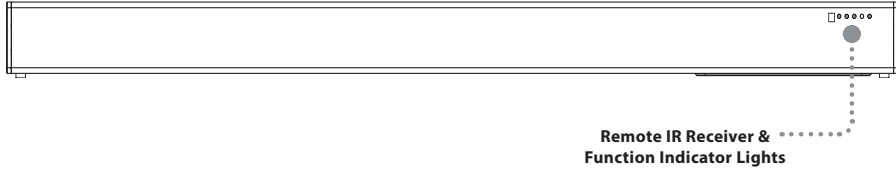
Rear View



Speaker Inputs Detail



Front View



Speaker Controls (Right Side)

Power

Press to power the unit ON or OFF.

Source/Connect

Press to switch between Optical, Line In, Aux In, and Bluetooth modes.

Press and hold to wirelessly connect to the subwoofer (see pg.12).

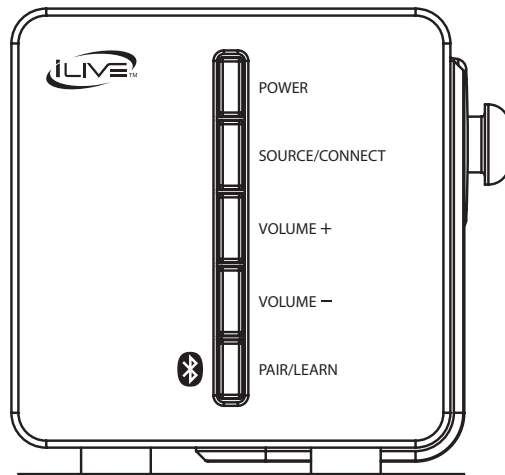
Volume +/-

Press to adjust the volume up or down.

Pair/Learn

Press and hold to begin pairing to a Bluetooth device.

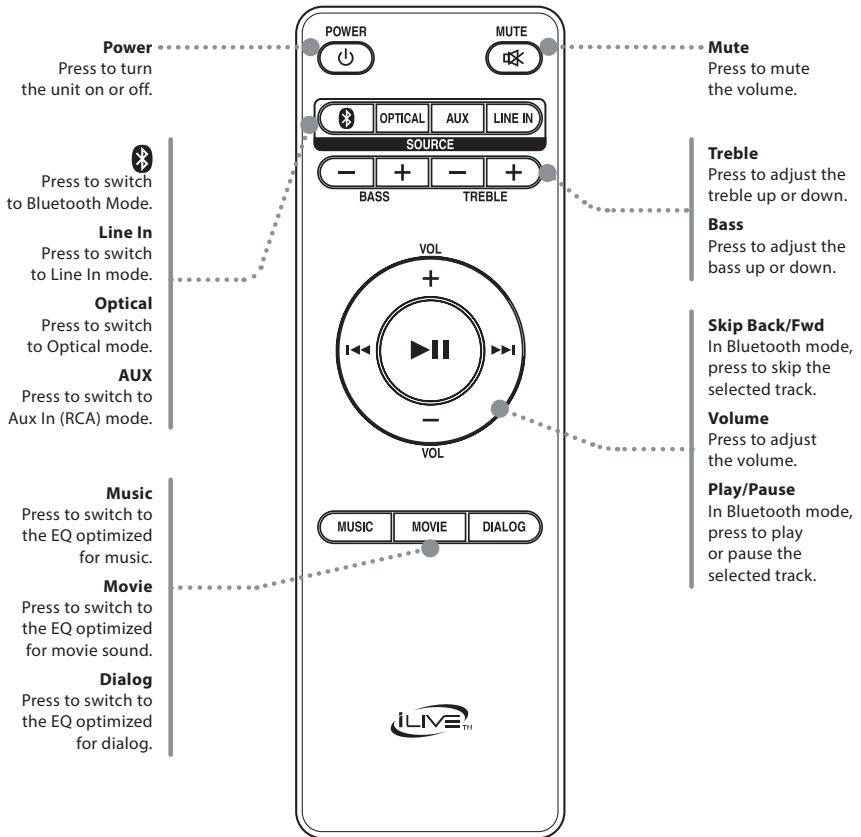
With the soundbar OFF, press to begin using the Learn Feature (see pg.13).



Function & Media Source Indicators


| Soundbar Status | Indicator Light |
|---------------------|--|
| Power OFF | Red Light |
| Line In Mode | Green Light |
| Optical Mode | Orange Light |
| Aux In Mode | White Light |
| Bluetooth Pairing | Flashing Blue Light |
| Bluetooth Connected | Blue Light |
| Mute Volume | Flashing Source Light (ex. Line In - flashing green) |
| Adjusting Volume | Source Light flashes with each adjustment |
| Max Volume | Source Light remains solid |

Remote



Bluetooth Wireless

Pairing to a Bluetooth Device and Playing Audio Wirelessly

1. With the unit powered ON, press the  button on the remote to switch to **Bluetooth Mode**, indicated by a slowly flashing blue light. *You can also press the **Source** button on the side of the unit.*
2. Press and hold the **Pair** button on the side of the **soundbar** until the pairing indicator begins quickly flashing blue. *When pairing, remain within 3 feet of the unit.*
3. Use the controls on your Bluetooth device to select **ITBSW397** in your Bluetooth settings. *If your device requests a password, enter the default password **0000**. Consult the user's manual for your specific device for more detailed instructions on pairing Bluetooth devices.*
4. When successfully paired, a chime will sound and the pairing indicator will change to a solid blue. Audio should now be heard through the speakers. Use the controls on the connected Bluetooth Device to select and begin playing audio.
5. Play, pause or skip audio using the controls on the connected Bluetooth Device or the soundbar's remote.

After initial pairing, the unit will stay paired unless unpaired manually by the user or erased due to a reset of the device. If your device should become unpaired or you find it is unable to connect, repeat these steps.

Audio Inputs

Aux In (Stereo RCA Inputs)

Requires RCA stereo audio cable (not included). When connecting an RCA stereo audio cable (Red/White), match the colored ports to their corresponding plugs.

1. Connect the RCA stereo audio cable (not included) to the RCA Stereo Inputs on the soundbar and the audio outputs on a television or other audio source.
2. Power ON the soundbar and press the **Source** button to select **Aux In Mode**, indicated by a white light.
3. Audio played through the television should now be heard through the speakers.

Optical Input

You will need an audio source with an Optical Audio Output and a Digital Optical Audio Cable (included).

1. Connect the **Digital Optical Audio Cable** to the optical output on the audio source and to the **Optical Input** on the soundbar.
2. Power ON the soundbar and press the **Source** button to select **Optical Mode**, indicated by an orange light.
3. Using the native controls on your connected device, make sure the audio settings are set to **PCM or Optical Audio** and are turned ON.
4. Audio from the connected audio source should now be played through the speakers.

Important tips for optical audio:

Use the correct toslink cable and make sure that it is firmly seated in both source and sound bar sockets.

Optical output is activated on the source (they should see a red light emitting from the toslink socket).

It may be labeled SPDIF in the setting menu of the source.

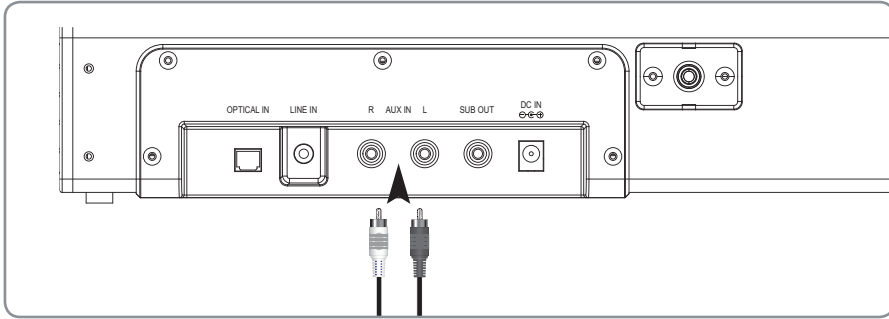
The optical output is set to output PCM and not Dolby Digital.

Line In

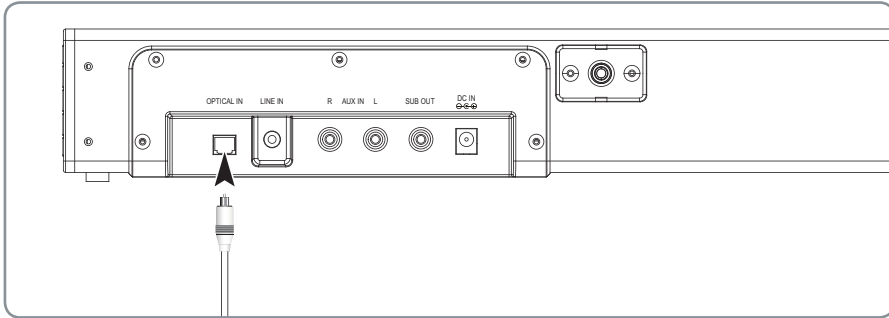
Requires a 3.5 mm audio cable (not included).

1. Using a 3.5 mm audio cable, plug into the **Line In** on the soundbar and the audio output/headphone jack on an MP3 Player or other audio source.
2. Power ON the soundbar and press the **Source** button to select **Line In Mode**, indicated by a green light.
3. Audio played through the connected device should now be heard through the speakers. Use the controls on the connected device to play, pause, or skip selected tracks.

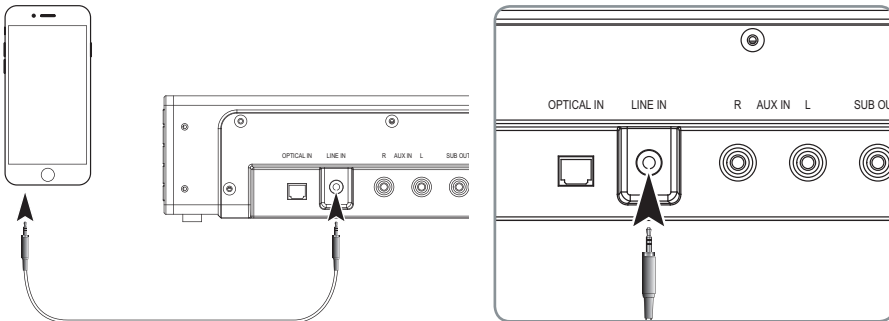
Aux In (Stereo RCA Inputs) - Detail



Optical Input - Detail



Line In - Detail

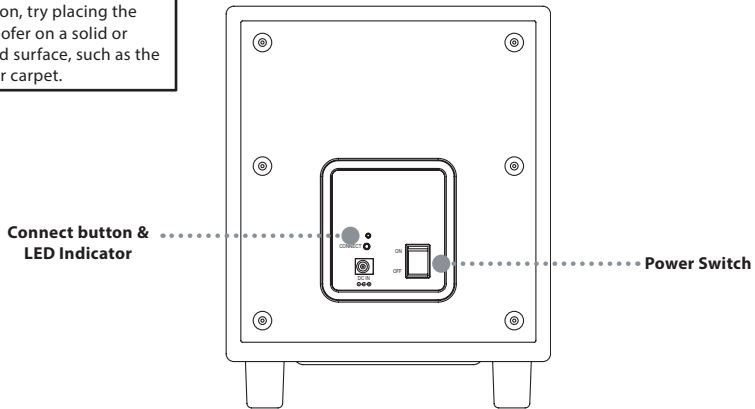


Subwoofer

Connecting the Wireless Subwoofer

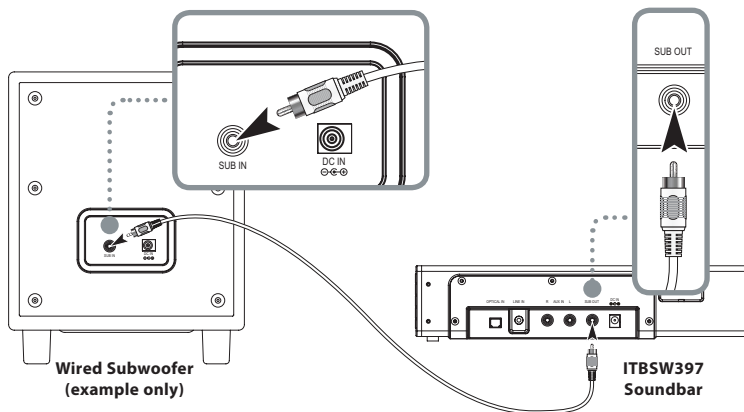
1. With the soundbar and subwoofer powered ON, press and hold the **Source/Connect button on the soundbar** until the **Power LED** begins flashing red.
2. Press the **Connect button on the subwoofer** until the **Connect LED** on the subwoofer begins flashing.
3. The units are connected when both LEDs turn solid. When audio is played through any source, the speaker will automatically use the connected subwoofer.

NOTE: To reduce unwanted vibration, try placing the subwoofer on a solid or padded surface, such as the floor or carpet.



Connecting to a Wired Subwoofer

The soundbar can also be used with conventional wired subwoofers. Use an RCA audio cable (not included) to connect the soundbar's subwoofer output to a wired subwoofer's audio input. When audio is played through any source, the speaker will automatically use the connected subwoofer.



Learn Feature

What is the Learn Feature?

This will teach the soundbar to function with a separate remote control, such as the remote for your television or a universal remote. Teaching the bar speaker remote commands will reduce the number of remotes needed and generally improve the ease of operation. Power, volume and mute are a examples of commands that the soundbar can learn.

Note: While the soundbar is able to learn most commands and IR protocols, not all can be programmed. For example, bass and treble may be commands that cannot be duplicated by another remote. Use the soundbar remote for these functions.

Using the Learn Feature

1. With the power OFF, press the **Learn** button on the soundbar. An indicator light will begin flashing red.
2. Press the button on the **soundbar remote** that you want the soundbar to learn. *For example: **Volume +***
3. The **red light** will continue to flash while another indicator displays a **blue light**.
4. Press the corresponding button on the other remote.
5. The **red light** will continue to flash and another indicator will display a **green light** when the signal is received.
6. Press the **Learn** button on the soundbar to complete the set up. The programmed button on your remote will now be able to control your sound bar. **Note: It is necessary to program each button on your remote separately.**
7. If the soundbar has failed to learn a command, the indicator will not display the green light. Try another button.

Company Information

Contact Information

Website: www.iLiveElectronics.com

Email Support: prodinfo@dpiinc.com

Email Parts: partsinfo@dpiinc.com

Phone Support: 1-888-999-4215

Warranty

For Warranty Information and the most up-to-date version of this User's Guide, go to:

www.iLiveElectronics.com

International Support

To download this User's Guide in English, Spanish, and French, or to get answers to frequently asked questions, visit the support section at: www.iLiveElectronics.com

Para descargar este Manual del Usuario en inglés, español y francés, o para obtener respuestas a preguntas frecuentes, visite la sección de apoyo en: www.iLiveElectronics.com

Pour télécharger ce guide de l'utilisateur en anglais, espagnol ou français, ou pour obtenir des réponses à des questions fréquemment posées, consultez la rubrique d'assistance sur: www.iLiveElectronics.com



***Protect for Today
Sustain for Tomorrow***

Copyright © 2017 Digital Products International (DPI, Inc.) All other trademarks appearing herein are the property of their respective owners. Specifications are subject to change without notice.