

## **Certification Exhibit**

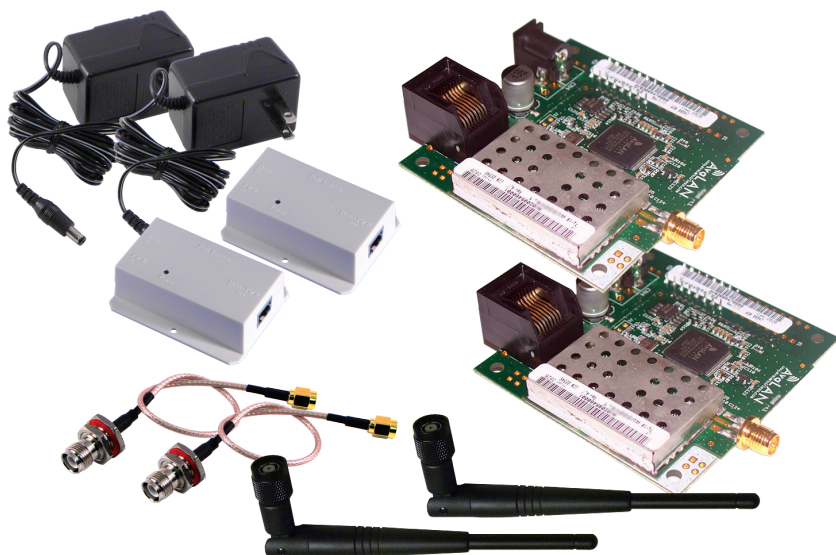
**FCC ID: R4N-AW2400MR  
IC: 5303A-AW2400MR**

**FCC Rule Part: 15.247  
IC Radio Standards Specification: RSS-210**

**ACS Project Number: 14-0082**

**Manufacturer: Avalan Wireless Systems Inc.  
Model: AW2400MR**

## **Manual**



# AW2400mR-EVAL

## USER'S MANUAL

### 2.4 GHz Wireless Ethernet Module Evaluation Kit

*Industrial-grade, long-range wireless Ethernet systems*

**AvaLAN**  
W I R E L E S S

Thank you for your purchase of the AW2400mR-EVAL Wireless Ethernet Module Evaluation Kit.

If you have any questions when configuring your AvaLAN system, the best place to get answers is to visit [www.avalanwireless.com](http://www.avalanwireless.com). You will also find the latest updates there.

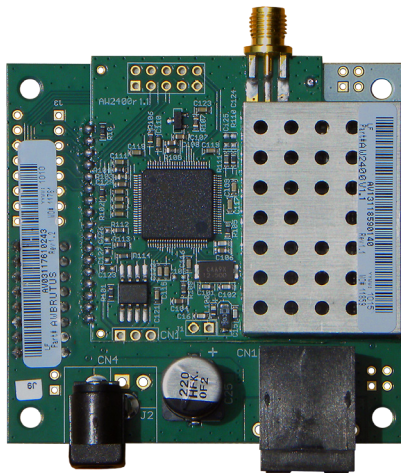
If more assistance is needed, send email to [support@avalanwireless.com](mailto:support@avalanwireless.com).

To speak to a live technician, please call technical support at the number below during normal business hours.

## Limited Warranty

---

This product is warranted to the original purchaser for normal use for a period of 360 days from the date of purchase. If a defect covered under this warranty occurs, AvaLAN will repair or replace the defective part, at its option, at no cost. This warranty does not cover defects resulting from misuse or modification of the product.



© 2010 by AvaLAN Wireless Systems Inc. All rights reserved.

Revision 03.21.2014

125A Castle Drive  
Madison, AL 35758

Sales: (866) 533-6216  
Technical Support: (650) 384-0000  
Customer Service: (650) 641-3011  
Fax: (650) 249-3591

## Operational summary

---

The AW2400mR Radio Module allows the user to create a long-range, wireless Ethernet network with up to 16 subscriber units per access point. The configuration may include any combination of AW2400mR, AW2400xTR, AW2400iTR and AW2400xTP radios.

Configuring a wireless link with the AW2400mR requires the establishment of six elements:

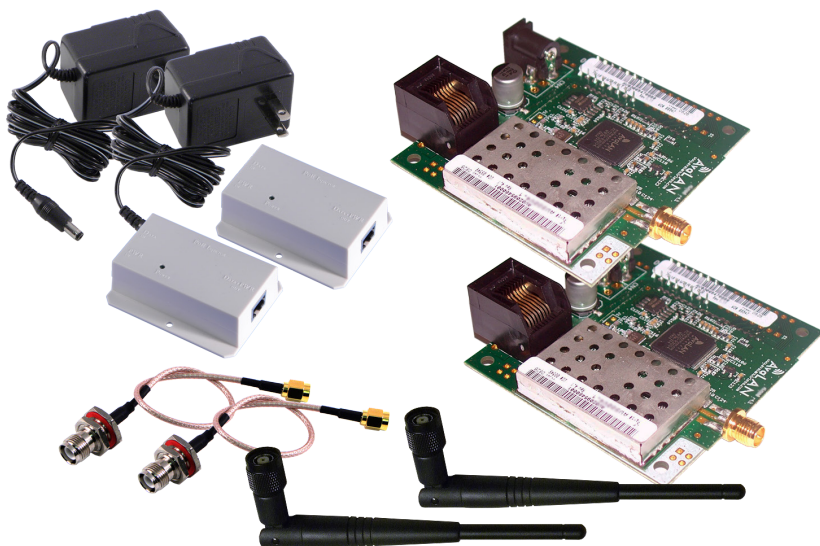
- Each radio must know whether it is to be an access point (AP) or subscriber unit (SU).
- Each radio must have an IP address that is unique among all others on the same network.
- The AP must know how many SUs are expecting communication with it.
- The AP and any given SU must agree on which radio frequency channel they are using. This can be manually set or allowed to change automatically.
- The SU must be assigned a unique subscriber ID to specify which time division slot it will use when communicating with the AP.
- The AP and any given SU must share a common 128-bit encryption key.

AW2400mR radios may be configured by two different methods. They may be connected to a computer that will run a web browser, setting parameters via their built-in browser interfaces. They may also be programmed via the “easy key” method using the DIP switches and LEDs on the module.

The access point (AP) automatically scans for the best of the 29 available radio frequency channels, encrypts Ethernet data received from the network, and transmits it wirelessly to the correct subscriber unit (SU). The AP is constantly monitoring the radio link and can automatically change the channel if performance is degraded due to interference. If two AP units are very close to one another, they may interfere if operating on adjacent frequency channels. Place them at least 10 feet apart or manually select non-adjacent channels for their operation. Also, the SU should be placed at least 10 feet from the AP to avoid overloading the radio's receiver.

Any 10/100 BaseT Ethernet client device (ECD) can be connected to an AW2400mR subscriber unit. Each SU encrypts Ethernet traffic received from the attached ECD and transmits the data wirelessly to its AP. Each SU can be plugged directly into an ECD without adding drivers or loading software. Essentially, once the AP/SU pair is configured and running it behaves like a continuous Ethernet cable.

## Evaluation Kit Contents



The AW2400mR-EVAL 2.4 GHz Wireless Ethernet Module Evaluation Kit contains two each of the following items:

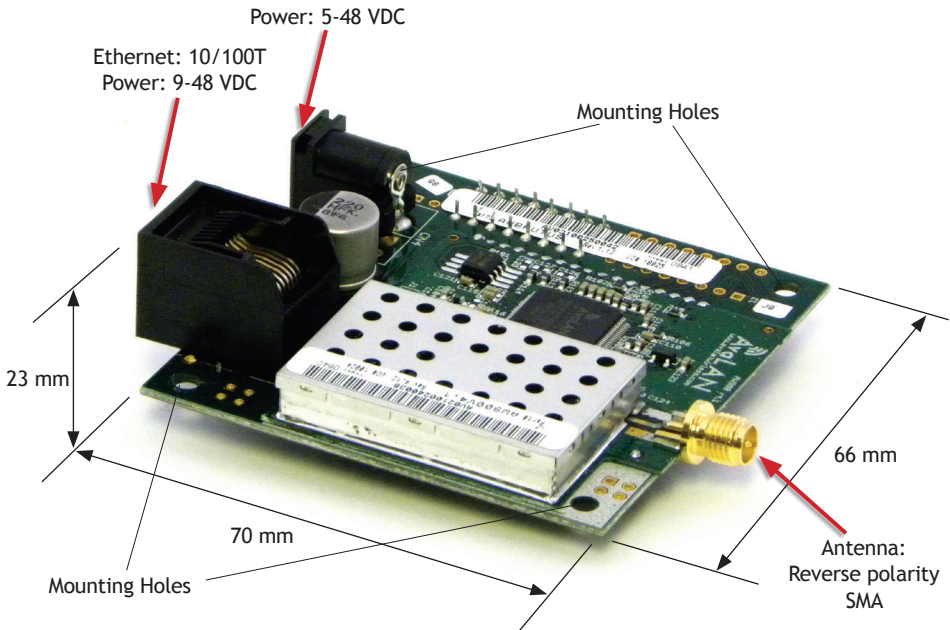
- AW2400mR Wireless Ethernet Modules
- AW2-2400 Omnidirectional Antennas
- AW-P8 Antenna to Radio Connectors
- AW-POE Power Over Ethernet Injectors
- AW-12VPS 12 Volt Power Supplies

Additional quantities of any of these components may be purchased from AvalAN Wireless or our distributors.

To power up a radio module, connect the antenna via the pigtail cable provided. Connect an Ethernet cable to the RJ-45 jack on the module. Power may be supplied to the module using the 12 VDC wall hanger power supply either through the Ethernet cable using the POE or directly into the P5 jack on the module.

Provide some physical separation between two radio modules — at least five feet. If their antennas are in close proximity, the module radio receivers will be overloaded, causing degradation in the bit error rate and slower link performance.

## Physical Dimensions



## 2.4 GHz Channels

Channel	Center Frequency	Channel	Center Frequency
0	Auto Mode	15	2.445833 GHz
1	2.416667 GHz	16	2.447917 GHz
2	2.418750 GHz	17	2.450000 GHz
3	2.420833 GHz	18	2.452083 GHz
4	2.422917 GHz	19	2.454167 GHz
5	2.425000 GHz	20	2.456250 GHz
6	2.427083 GHz	21	2.458333 GHz
7	2.429167 GHz	22	2.460417 GHz
8	2.431250 GHz	23	2.462500 GHz
9	2.433333 GHz	24	2.464583 GHz
10	2.435417 GHz	25	2.466667 GHz
11	2.437500 GHz	26	2.468750 GHz
12	2.439583 GHz	27	2.470833 GHz
13	2.441667 GHz	28	2.472917 GHz
14	2.443750 GHz	29	2.475000 GHz

## Browser Interface Configuration

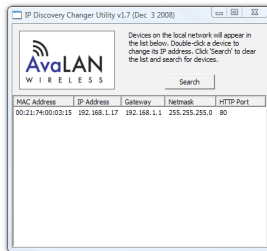
1. Digital configuration is done by means of the AW2400mR's built in browser interface. It should be powered on and connected at least temporarily to a network containing a computer that can run a conventional web browser.

2. Download the AvaLAN IP Discovery Utility from our website and extract ipfinder.exe from the zip archive, placing it on your desktop or in a convenient folder.

<http://www.avalanwireless.com/ipfinder/ipfinder.zip>

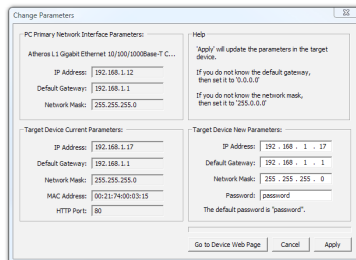
Note that this utility only runs on MS Windows, not linux or MAC. If you must use a non-Windows computer for configuration, make sure your subnet mask allows your computer to see 192.168.17.17. Connect to that default IP address with your web browser, continuing the setup procedure with step 6.

3. Run the IP Discovery Utility, ipfinder.exe and you should see a window similar to this:



The AW2400mR should appear in the list at the default IP address of 192.168.17.17. If it does not, click "Search" to regenerate the list. If it still does not appear, you have a connection issue and need to re-examine the cabling or you may have a firewall issue on your computer.

4. Double click the list item that refers to the AW2400mR being configured. You should see a second window that is similar to this:



The information on the left is the current status of the radio, while the boxes on the right allow you to change it. It is important that the IP address of the AW2400mR is in the same subnet as your computer. For example, if the subnet mask is 255.255.255.0 ( a class C network), the first three number groups of the IP address must match. Choose your desired parameters and click "Apply."

5. Make note of the chosen IP address and password, then click “Go to Device Web Page.” This will cause your default web browser to launch with the device IP address in the browser address bar. Or you may launch the browser on your own and enter the web page address manually: `http://[the IP address you just set]`.

6. The browser page that loads first shows the current device information and QoS statistics and provides a login at the upper right. Log in using the password you just specified (or “password” if you kept the default). If the login succeeds, you will see an admin page similar to this:

The screenshot shows the xTR Admin web interface. The top section displays the device's version (1.48.4003), MAC address (00:21:74:00:03:16), Ethernet speed (100 Mbps Full Duplex), and uptime (0 days 00h 07:02). Below this, there are two main sections: Statistics and Device Information. The Statistics section shows various radio-related metrics, all of which are currently at 0. The Device Information section shows details about the device type, subscriber ID, current RF channel, and other hardware-related information. At the bottom, the Device Settings section allows for configuration of the device's password, channel, IP address, network mask, default gateway, and HTTP port. The interface is clean and professional, with a clear layout for navigation and data presentation.

Statistics	
Radio Block Error Rate:	0.0 %
Radio Total Packets:	0
Radio Failed Packets:	0
Radio Passed Packets:	0
Radio Broadcast Packets:	0
Radio Unicast Packets:	0
Radio Average TX Size:	0 bytes
Radio Average RX Size:	0 bytes

Device Information	
Device Type:	Subscriber Unit
Subscriber ID:	0
Current RF Channel:	1
RF Connected:	No
Radio Active:	Standby
Product Code:	4
Radio Version:	3
Radio Firmware Release:	063

Device Settings	
Device	Password: <input type="text" value="password"/>
RF	<input checked="" type="radio"/> Use DIP 3-8 selection: 0 (auto channel select mode) <input type="radio"/> <input type="text" value="0"/> (overrides the current DIP 3-8 selection)
Network	IP Address: 192.168.1.17 (###)
	Network Mask: 255.0.0.0 (###)
	Default Gateway: 0.0.0.0 (###)
	HTTP Port: 80 (decimal 1-65535)

7. The admin page has sections similar to the login page showing radio statistics and device information plus it adds several new sections. The Device Settings section allows setting the network information and choosing an RF frequency channel. The default is to allow the radio to choose its own frequency based on minimizing interference. If you set a fixed channel, make sure the AP and all SUs use the same one. References to DIPs on this and the next web page refer to the DIP switches on the module that are used in the “easy key” method of configuration and may be ignored when using the browser method.

If you scroll down in the Admin browser page, you will come to three more sections:

- A graphical spectrum analyzer display that may help you to select radio channels that avoid interference
- A section to be used if an update to the AW2400mR's firmware is required
- An Advanced Links section with a dire **warning** about advanced users only.



Despite the warning, you will need to click the “Advanced Admin” button in order to set the device type, ID and encryption key. You should then see a page similar to this:

Version: 1.48.4003  
MAC Address: 00:21:74:00:03:16  
Ethernet: 100 Mbps Full Duplex  
Uptime: 0 days 00h 10:45

Logout Back to Admin Page  
Refresh Now

Need help? Online FAQ available at [www.AvalANWireless.com](http://www.AvalANWireless.com)

**Warning! These settings are only for use by advanced users!  
Please proceed with caution.**

**Device Settings**

	Description	Value
Device:	Type:	<input type="radio"/> Access Point (override D/P 1 selection) <input checked="" type="radio"/> Subscriber Unit (D/P 1 selection)
	Subscriber ID:	Every SU must have a unique ID. Valid IDs are from 1 to 63. 1 (decimal 1-63)
Encryption:		<input checked="" type="checkbox"/> Enable User Specified Keys
	Network Name (32-bit):	xxxx-xxxx 0000-0076 (hex)
	Encryption Key (128-bit):	xxxx-xxxx-xxxx-xxxx-xxxx-xxxx-xxxx-xxxx 0123-4567-890A-BCDE-F012-3456-789A-BCDE (hex)

Caution! By enabling 'User Specified' keys, you will have to manually key all of your subscriber units. Apply Cancel

**Reset the Device**

Reset Device

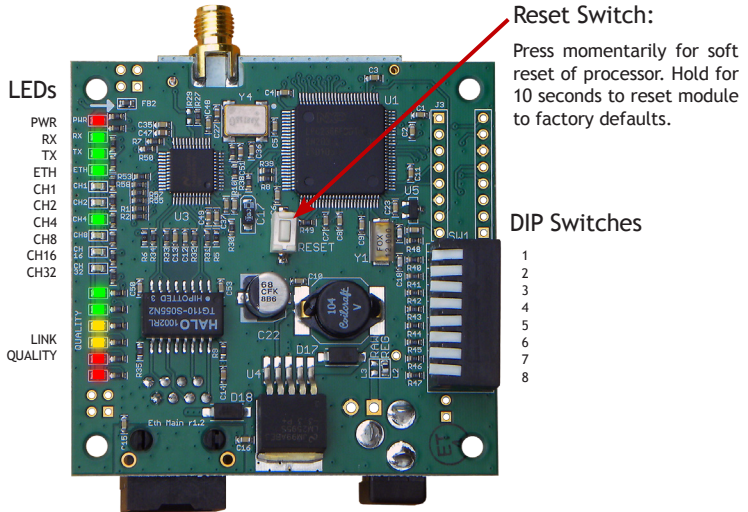
8. On the Advanced Admin page, set the parameters as follows:

- Choose Device Type: Access Point or Subscriber Unit.
- For Subscriber Units, assign unique ID numbers in numeric order from 1 to 63.
- For an Access Point, enter the number of Subscriber Units that will be communicating with it.
- Click the box labeled “Enable User Specified Keys.”
- Choose an 8-digit hex (0-9 and A-F) Network Name that will be common among the AP and its SUs and enter it. The hyphen is required.
- Choose a 32-digit hex encryption key and enter it. Again, the hyphens are required. This key must match between the AP and the SU so make a note of it as well.

After entering the parameters, click the “Apply” button to save them to the module.

9. When all of the radios are keyed and operating, connect them to your network and Ethernet devices as desired and cycle the radio module’s power to begin normal operation. Now, browser management of the SUs can be performed over the wireless network. Note: avoid plugging actively linked radios into the same switch because this will corrupt its routing table and may cause network problems just as if you had plugged a CAT5 cable directly between two ports of a switch.

## LED and Switch Behavior



LED	Function	Color
PWR	Unit has power and has successfully booted	Red
RX	Radio reception is occurring	Green
TX	Radio transmission is occurring	Green
ETH	Ethernet port is connected	Green
CH1	By adding the numbers that are lit, you can determine the current radio channel. Valid channels are 1 to 29. For the frequency of each channel, see the table on page 5.	Green
CH2		
CH4		
CH8		
CH16		
CH32		
Shows link quality (more lit the better) or indicates "key exchange mode" if blinking sequentially	Excellent link quality: no retransmissions	Green
	Very good link quality: few retransmissions	Green
	Good link quality: occasional retransmissions	Amber
	Fair link quality: some retransmissions	Amber
	Poor link quality: frequent retransmissions	Red
	No link quality: no link available	Red
DIP Switch	Function (up is off, down is on)	
1	Set on for Access Point, off for Subscriber Unit	
2	Test switch for tech support use. Leave off	
3-8	All off: automatic frequency selection. To manually set the channel, set switches on same pattern as the channel LEDs: Switch 3 is bit 1, switch 4 is bit 2, switch 5 is bit 4, etc.	

## **“Easy Key” Configuration**

In most cases, the browser interface is a better choice for configuring the modules. But they also can be configured as a point-to-point bridge or a point-to-multipoint group using the DIP switches. When this method is used, the module that will operate as the access point provides a unique network ID calculated from its MAC address and a unique random encryption key programmed into it during manufacture.

If you do configure a set of modules this way, be aware that they will all have the factory default IP address of 192.168.1.17. If you later need access to a module via the browser interface, use the IP Finder utility, select the individual unit and give it a unique IP address.

### **Initial Setup:**

1. Select the module that will operate as the access point (AP) and set its DIP switch 1 on (down). Set DIP switch 1 off (up) on the module(s) that will operate as subscriber units (SUs).
2. Select matching frequency channels on all modules or select automatic channel selection by leaving DIP switches 3-8 off.
3. Power up the AP module. Its link quality LEDs will begin blinking sequentially, showing that the module is hunting for an SU to exchange keys with.
4. Power up an SU module (its DIP switch 1 is off). This module's link quality LEDs will also begin blinking sequentially showing that it is hunting for an AP to supply a network key.
5. Connect an Ethernet cable from the AP module to the SU module and the two modules will automatically exchange keys. (Do not connect through a switch or hub, but cable directly with a regular patch or crossover cable.)
  - On the AP module, the link quality LEDs will still blink sequentially in key exchange mode and the TX LED will light showing successful key exchange
  - On the SU module, the link quality LEDs will no longer blink sequentially, but one of the green link quality LEDs will slowly blink to indicate successful key exchange.
6. Repeat steps 4 and 5 for any other SU modules to be configured to the same AP.
7. disconnect the Ethernet cable and cycle power on all modules for the new keys to take effect. LED behavior should reflect normal RF operation once the units are deployed.

To add a new SU to the AP, disconnect the AP from the network and power off. Connect an Ethernet cable between the SU and AP. Power up the SU FIRST and then the AP. The SU will receive the key. Disconnect the Ethernet cable and cycle power on the SU to cause the new keys to take effect.

To re-key SUs to a new AP, proceed as in the initial setup, making sure to power up the AP FIRST.

## Technical specifications

Characteristic	Specification/Description
RF transmission rate	1.536 Mbps
Ethernet data rate	935 Kbps
RF Output Power	+18.2 dBm (4 Watts EIRP with 17.8 dBi panel)
Receiver Sensitivity	-97 dBm at 10 <sup>-4</sup> Bit Error Rate
Range	Up to 30 miles line-of-sight
RF channels/bandwidth	29 non-overlapping with 2.083 MHz spacing and 1.75 MHz bandwidth, automatic or manually selectable via web browser interface
Connector types	RF: RPSMA Female / 10/100 base T Ethernet: RJ-45
Data Encryption	128-bit AES, FIPS197, keys set through password-protected browser interface
Error correction technique	Sub-block error detection and retransmission
Adjacent band rejection	SAW receiver filter attenuates cellular and pager interference
Power regulation	Built-in switching regulator
Browser management tools	QoS Statistics, Network Settings, Spectrum Analyzer, Firmware Upgrade
Power consumption	Transmit: 1.7 Watts    Receive: 0.8 Watts
Voltage	9 to 48 VDC via unused pins in RJ-45 jack - pins 4,5 positive, 7,8 ground
Power regulation	Switching regulator
Transmit current draw	140 ma at 12 VDC
Operating Temperature Range	-40 °C to +80 °C
Size	70 x 66 x 23 mm, 40 grams

## FCC Certification

The AW2400mR OEM RF Module complies with Part 15 of the FCC rules and regulations. Compliance with labeling requirements, FCC notices and antenna regulations is required.

### Labeling Requirements

In order to inherit AvaLAN's FCC Certification, compliance requires the following be stated on the device and within its operation manual:

FCC ID: R4N-AW2400MR This device complies with Part 15 of the FCC Rules. Operation is subject to the following two conditions: (1) this device may not cause harmful interference and (2) this device must accept any interference received, including interference that may cause undesired operation.

**Label Warning WARNING** The Original Equipment Manufacturer (OEM) must ensure that FCC labeling requirements are met. This includes a clearly visible label on the outside of the final product enclosure that displays the contents shown in the figure below.

**Figure A.1. Required FCC Label for OEM products containing the AvaLAN AW2400MR OEM RF Module**

Contains FCC ID: R4N-AW2400MR

The enclosed device complies with Part 15 of the FCC Rules. Operation is subject to the following two conditions:

- (1) this device may not cause harmful interference and
- (2) this device must accept any interference received, including interference that may cause undesired operation.

### FCC Notices

Adherence to the following is required:

**IMPORTANT:** The AW2400MR OEM RF Modules have been certified by the FCC for use with other products without any further certification (as per FCC section 2.1091). Changes or modifications not expressly approved by AvaLAN could void the user's authority to operate the equipment.

**IMPORTANT:** OEMs must test their final product to comply with unintentional radiators (FCC section 15.107 and 15.109) before declaring compliance of their final product to Part 15 of the FCC Rules.

**IMPORTANT:** The AW2400MR OEM RF Modules have been certified for fixed base station and mobile applications. If modules will be used for portable applications, the device must undergo SAR testing.

**Note:** This equipment has been tested and found to comply with the limits for a Class B digital device, pursuant to Part 15 of the FCC Rules. These limits are designed to provide reasonable protection against harmful interference in a residential installation. This equipment generates, uses and can radiate radio frequency energy and, if not installed and used in accordance with the instructions, may cause harmful interference to radio communications. However, there is no guarantee that interference will not occur in a particular installation. If this equipment does cause harmful interference to radio or television reception, which can be determined by turning the equipment off and on, the user is encouraged to try to correct the interference by one or more of the following measures:

- Reorient or relocate the receiving antenna.
- Increase the separation between the equipment and receiving module.
- Connect the equipment into an outlet on a circuit different from that to which the receiving module is connected.
- Consult the dealer or an experienced radio/TV technician for help.

### FCC-Approved Antennas (2.4 GHz)

#### Fixed Base Station and Mobile Applications

AvaLAN Modules are pre-FCC approved for use in fixed base station and mobile applications. When the antenna is mounted at least 20 cm (7.87") from nearby persons, the application is considered a mobile application.

#### Portable Applications and SAR Testing

When the antenna is mounted closer than 20 cm to nearby persons, then the application is considered "portable" and requires an additional test be performed on the final product. This test is called the Specific Absorption Rate (SAR) testing and measures the emissions from the module and how they affect the person.

### RF Exposure

(This statement must be included as a CAUTION statement in OEM product manuals.)

**WARNING:** This equipment is approved only for mobile and base station transmitting devices. Antenna(s) used for this transmitter must be installed to provide a separation distance of at least 20 cm from all persons and must not be co-located or operating in conjunction with any other antenna or transmitter.

### Antenna Warning

**WARNING:** This device has been tested with Reverse Polarity SMA connectors with the antennas listed in Table 1 below. When integrated into OEM products, fixed antennas require installation preventing end-users from replacing them with non-approved antennas. Antennas not listed in the table below must be tested to comply with FCC Section 15.203 (unique antenna connectors) and Section 15.247 (emissions). To fulfill FCC Certification requirements:

1. Integrator must ensure required text [Figure 1] is clearly placed on the outside of the final product.
2. AW2400MR Module may be used only with Approved Antennas that have been tested with this module.

Antenna Type	Maximum Gain
Omni	≤ 15dBi
Yagi	≤ 15dBi
Panel	≤ 19dBi

This Ethernet Module is approved for use only with specific antenna, cable, and output power configurations that have been tested and approved for use. Modifications to the module, the antenna system, or to the power output that have not been explicitly specified by the manufacturer are not permitted and may render the radio non-compliant with applicable regulatory authorities. The radio equipment described in this manual emits radio frequency energy. Professional installation is required. The antenna(s) for this transmitter must not be collocated or operated in conjunction with any other antenna or transmitter. When using PANEL antennae with gain above 17.8dBi (but below the 19dBi limit), ensure the cable attenuation between the radio module and antenna is equal to the amount of gain above 17.8dBi. Example: the 19dBi antenna requires 1.2dB of cable loss to maintain compliance to FCC/IC EIRP limits. The recommended cable length when using the 19dBi PANEL antenna is 6ft of LMR200 cable.

## IC (Industry Canada) Certification

Labeling requirements for Industry Canada are similar to those of the FCC. A clearly visible label on the outside of the final product enclosure must display the following text:

### Contains Model AW2400MR Radio, IC: 5303A-AW2400MR

Integrator is responsible for its product to comply with IC ICES-003 & FCC Part 15, Sub. B - Unintentional Radiators. ICES-003 is the same as FCC Part 15 Sub. B and Industry Canada accepts FCC test report or CISPR 22 test report for compliance with ICES-003.

Under Industry Canada regulations, this radio transmitter may only operate using an antenna of a type and maximum (or lesser) gain approved for the transmitter by Industry Canada. To reduce potential radio interference to other users, the antenna type and its gain should be so chosen that the equivalent isotropically radiated power (e.i.r.p.) is not more than that necessary for successful communication.

Conformément à la réglementation d'Industrie Canada, le présent émetteur radio peut fonctionner avec une antenne d'un type et d'un gain maximal (ou inférieur) approuvé pour l'émetteur par Industrie Canada. Dans le but de réduire les risques de brouillage radioélectrique à l'intention des autres utilisateurs, il faut choisir le type d'antenne et son gain de sorte que la puissance isotrope rayonnée équivalente (p.i.r.e.) ne dépasse pas l'intensité nécessaire à l'établissement d'une communication satisfaisante.

This radio transmitter has been approved by Industry Canada to operate with the antenna types listed below with the maximum permissible gain and required antenna impedance for each antenna type indicated. Antenna types not included in this list, having a gain greater than the maximum gain indicated for that type, are strictly prohibited for use with this device.

Le présent émetteur radio (identifier le dispositif par son numéro de certification ou son numéro de modèle s'il fait partie du matériel de catégorie I) a été approuvé par Industrie Canada pour fonctionner avec les types d'antenne énumérés ci-dessous et ayant un gain admissible maximal et l'impédance requise pour chaque type d'antenne. Les types d'antenne non inclus dans cette liste, ou dont le gain est supérieur au gain maximal indiqué, sont strictement interdits pour l'exploitation de l'émetteur.

Antenna Type	Maximum Gain
Omni	≤ 15dBi
Yagi	≤ 15dBi
Panel	≤ 19dBi

The antenna(s) for this transmitter must not be collocated or operated in conjunction with any other antenna or transmitter. When using the panel antenna to ensure cable attenuation between the radio module and antenna is atleast 1.2dB to maintain EIRP compliance. The recommended cable length when using the sector antenna is 6ft of LMR200 cable.

This device complies with Industry Canada licence-exempt RSS standard(s). Operation is subject to the following two conditions: (1) this device may not cause interference, and (2) this device must accept any interference, including interference that may cause undesired operation of the device.

Le présent appareil est conforme aux CNR d'Industrie Canada applicables aux appareils radio exempts de licence. L'exploitation est autorisée aux deux conditions suivantes : (1) l'appareil ne doit pas produire de brouillage, et (2) l'utilisateur de l'appareil doit accepter tout brouillage radioélectrique subi, même si le brouillage est susceptible d'en compromettre le fonctionnement.