

#01_Bluetooth_1Mbps_Horizontal_Down_5mm_Ch0

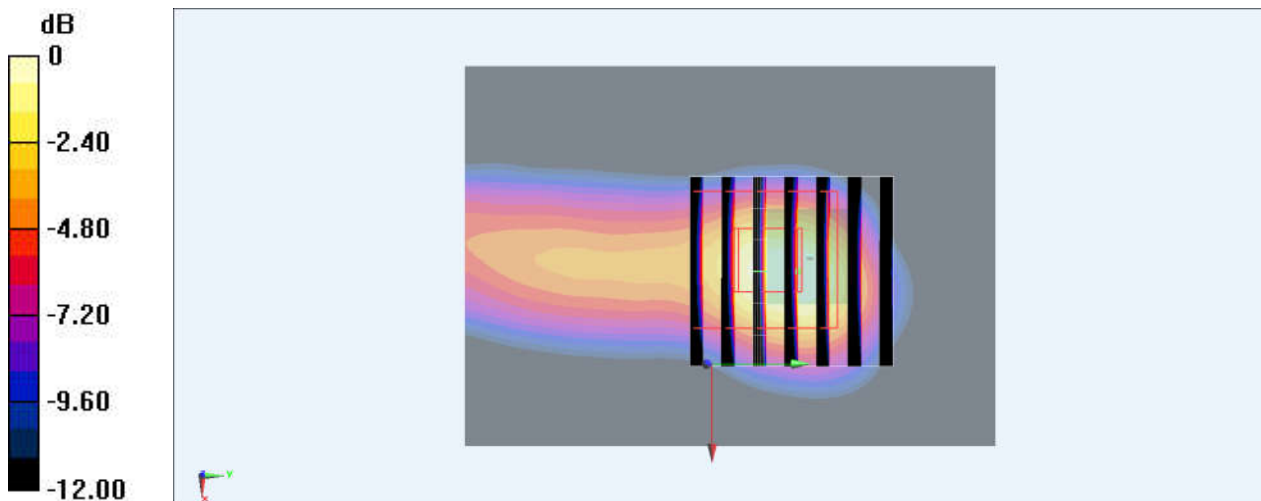
Communication System: Bluetooth ; Frequency: 2402 MHz;Duty Cycle: 1:1.275
Medium: HSL_2450_220406 Medium parameters used : $f = 2402$ MHz; $\sigma = 1.784$ S/m; $\epsilon_r = 38.959$;
 $\rho = 1000$ kg/m³
Ambient Temperature : 23.6 °C ; Liquid Temperature : 22.6 °C

DASY5 Configuration:

- Probe: EX3DV4 - SN7625; ConvF(7.91, 7.91, 7.91) @ 2402 MHz; Calibrated: 2022/1/27
- Sensor-Surface: 1.4mm (Mechanical Surface Detection)
- Electronics: DAE4 Sn1696; Calibrated: 2021/11/3
- Phantom: SAM_Left; Type: QD000P40CB; Serial: S/N:1488
- Measurement SW: DASY52, Version 52.10 (4);SEMCAD X Version 14.6.14 (7501)

Area Scan (51x71x1): Interpolated grid: dx=1.200 mm, dy=1.200 mm
Maximum value of SAR (interpolated) = 0.355 W/kg

Zoom Scan (7x7x7)/Cube 0: Measurement grid: dx=5mm, dy=5mm, dz=5mm
Reference Value = 12.57 V/m; Power Drift = 0.07 dB
Peak SAR (extrapolated) = 0.402 W/kg
SAR(1 g) = 0.185 W/kg; SAR(10 g) = 0.080 W/kg
Maximum value of SAR (measured) = 0.312 W/kg



0 dB = 0.355 W/kg = -4.50 dBW/kg