



**Shenzhen Anfert Electronics Co., Ltd  
Shenzhen Infinite Zhilian Technology Co.,  
Ltd.**

## Antenna Sample Recognition Letter

Customer: Xiao Ku	Date: 2024-03-26
Material model: K06 US version	Material structure: FPC
Item Code: M-AB2-03A-4-1-1A	Material color: black film
Antenna structure: Main antenna +3-in -1 antenna + LTE diversity antenna	Antenna material: Main antenna: P-AB2-03A-A-1-1A Three-in-one antenna: P-AB2-03A-E-1-2A LTE Diversity Antenna: P-AB2-03A-F-1-3A

**Change record column**

Date of preparation/change	Reason for change	Change content	Version
2024/3/26	New Version Released		V1.0

Quality	Structure	RF	Approval

**Customer confirmation column**

Quality	Structure	Electronic	Approval

**Customer material number:**

- 1 \_\_\_\_\_
- 2 \_\_\_\_\_
- 3 \_\_\_\_\_

**Customer Requirements:**

Shenzhen Anfert Electronics Co., Ltd. Address: Room 302, Floor 3, Building B, Hong Kong-Shenzhen Innovation Park, No. 40 Huaning Road, Dalang Street, Longhua District, Shenzhen

# Directory

- 1, Cover
- 2, Directory
- 3, SPEC  
Blueprint
- 4, RF Test  
Report
- 5, Reliability Test  
Report
- 6, QC  
Engineering  
Drawing
- 7, Full-size  
measurement  
report
- 8, Packagin  
g  
Informatio  
n

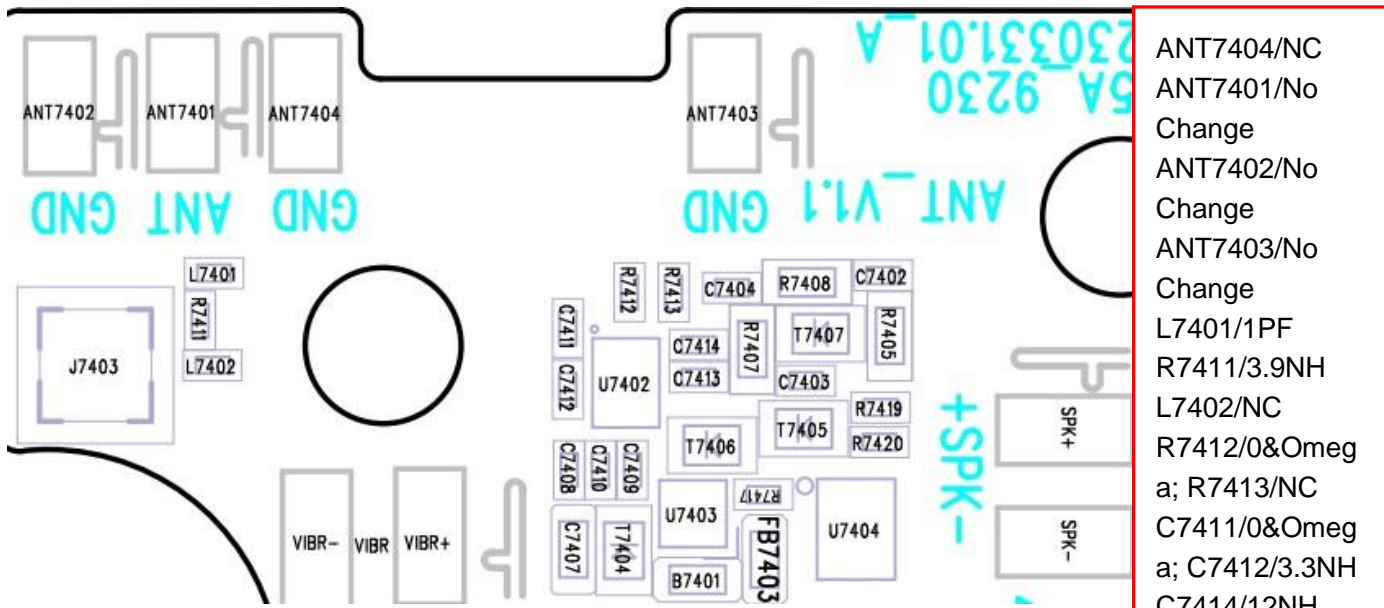
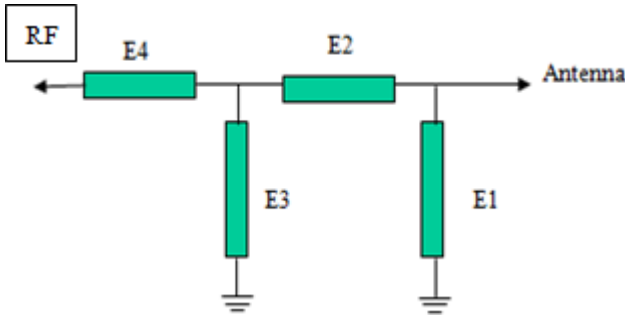
# 深圳市安弗特电子有限公司

## AFT tech Electronic Co., Ltd. (Shenzhen)

### Main Antenna Matching Circuit

Element	E1	E2	E3	
Value	and 1PF	3.9NH	NC	

Division I to make changes to the main antenna matching circuit! !



- ANT7404/NC
- ANT7401/No Change
- ANT7402/No Change
- ANT7403/No Change
- L7401/1PF
- R7411/3.9NH
- L7402/NC
- R7412/0&Omega; a; R7413/NC
- C7411/0&Omega; a; C7412/3.3NH
- C7414/12NH
- C7413/NC

Antenna	6
Date	December
Logic	
RF1	GSM900/1800/1900/W2100/W1900/W1700/W900/B2/3/4/7/8/25/66
RF2	GSM850/W850/B5/26
RF3	B12/13/17/28
RF4	

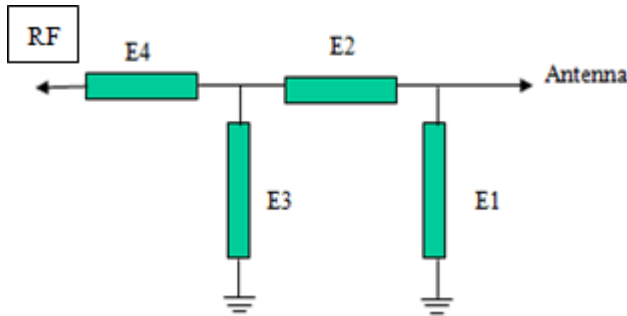
# 深圳市安弗特电子有限公司

## AFT tech Electronic Co., Ltd. (Shenzhen)

### diversity antenna matching circuit

Element	E1	E2	E3	
Value	NC	0 euro	NC	

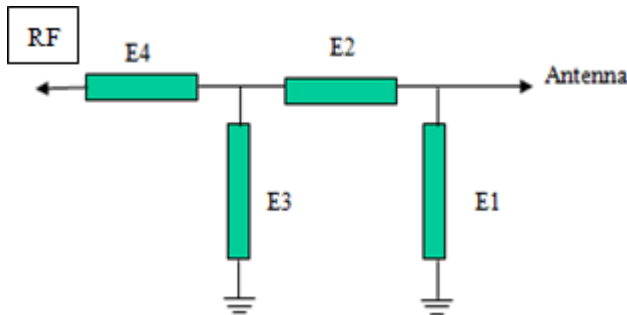
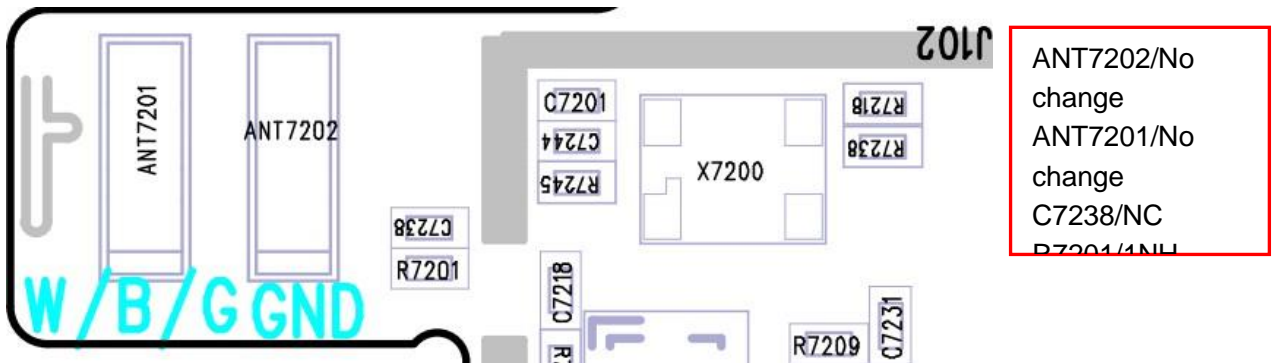
Our company has not changed the diversity matching circuit!



### three-in-one antenna matching circuit

Element	E1	E2	E3	
Value	NC	1.0nh		

Our company has not changed the three-in-one antenna matching circuit!

ANT7202/No change  
 change  
 ANT7201/No change  
 change  
 C7238/NC  
 R7201/1NH

# 深圳市安弗特电子有限公司

## AFT tech Electronic Co., Ltd. (Shenzhen)

### Fs OTA data:

Band	Channel	TRP(dBm)	TIS(dBm)	Band	Channel	TRP(dBm)	TIS(dBm)
GSM900	L	26.0		DCS1800	L	23.2	
	M	25.8			M	23.3	
	H	25.0	-99.1		H	24.4	-102.0
GSM850	L	24.1		PCS1900	L	25.0	
	M	24.2			M	24.0	
	H	24.6	-102.1		H	23.1	-100.0
W900	L	16.3		W2100	L	15.5	
	M	15.7			M	15.6	
	H	15.1	-102.1		H	16.0	-104.5
W1900	L	16.5		W850	L	16.0	
	M	15.6			M	15.8	
	H	15.5	-104.0		H	15.6	-103.4
LTE-B2 (10NHz)	L	16.5		LTE-B4 (10NHz)	L	15.6	
	M	16.2			M	16.0	
	H	15.5	-94.1		H	16.5	-93.4
LTE-B3 (10NHz)	L	15.5		LTE-B12 (10NHz)	L	15.0	
	M	15.8			M	15.4	
	H	16.8	-92.0		H	15.7	-93.2
LTE-B5 (10NHz)	L	16.1		LTE-B17 (10NHz)	L	15.4	
	M	16.1			M	16.0	
	H	15.7	-92.2		H	16.1	-93.5
LTE-B7 (10NHz)	L	13.6		LTE-B26 (10NHz)	L	15.8	
	M	14.5			M	15.8	
	H	15.4	-92.8		H	15.6	-93.0
LTE-B8 (10NHz)	L	16.5		LTE-B28 (10NHz)	L	15.5	
	M	16.1			M	15.8	
	H	15.5	-88.1		H	16.2	-93.2
LTE-B25 (10NHz)	L	16.5		LTE-B66 (10NHz)	L	15.3	
	M	15.8			M	15.8	
	H	15.3	-93.4		H	16.4	-93.2
W1700	L	16.5					
	M	17.0					
	H	17.1	-104.0				

# 深圳市安弗特电子有限公司

## AFT tech Electronic Co., Ltd. (Shenzhen)

### WiFi Active Data

Band	Channel	TRP(dBm)	TIS(dBm)	Band	Channel	TRP(dBm)	TIS(dBm)
2.4G( B Die) 11M	1	10.0		5G(A mode) 54m	36	10.3	
	7	10.5			64	9.0	
	13	10.3	-79.5		165	9.0	-69.5

### GPS measurement



(Company roof test, GPS search star results as shown in the figure above.).

# 深圳市安弗特电子有限公司

## AFT tech Electronic Co., Ltd. (Shenzhen)

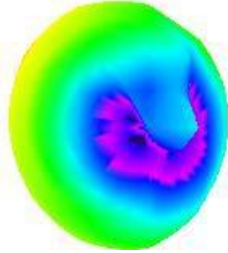
### Antenna gain (Antenna Gain)

Standard	Band	Frequency(MHZ)	Gain(dbi)
LTE	FDD-B2	1920-2170	-0.2
LTE	FDD-B3	1710-1880	0.3
LTE	FDD-B5	824-890	-2.8
LTE	FDD-B7	2520-2680	-1.9
LTE	FDD-B8	880-960	-2.5
LTE	FDD-B12	703-741	-3.2
LTE	TDD-B28	710-810	-3.2
LTE	TDD-B17	709-741	-3.2
LTE	TDD-B25	1855-1990	0.3
LTE	TDD-B66	1715-2175	0.1
LTE	TDD-B4	1715-2150	0.1
WCDMA	WCDMA-B1	1920-2170	-0.2
WCDMA	WCDMA-B2	1850-1990	0.3
WCDMA	WCDMA-B4	17112.4-2152.6	0.1
WCDMA	WCDMA-B5	824-890	-2.8
WCDMA	WCDMA-B8	880-960	-2.5
GSM	GSM 850	824-890	-2.8
GSM	GSM 900	880-960	-2.5
GSM	DCS 1800	1710-1880	0.3
GSM	PCS 1900	1850-1990	0.3
GPS		157 5	-0.6
2.4G WiFi/BT		2400-2480	0.5
5G WiFi		5150-5850	-1.5

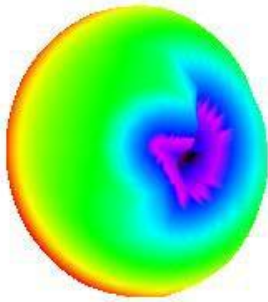
深圳市安弗特电子有限公司  
AFT tech Electronic Co., Ltd. (Shenzhen)

Apple Chart

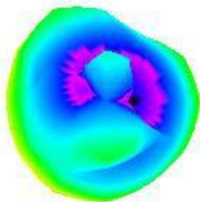
GSM900/W900/LTE-B8



GSM850/W850/LTE-B5/20



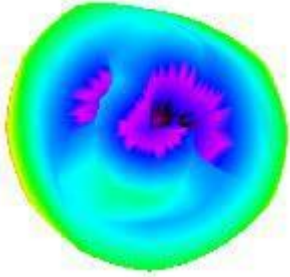
DCS1800/PCS1900/W1900/1700/LTE-B3/4/25/66



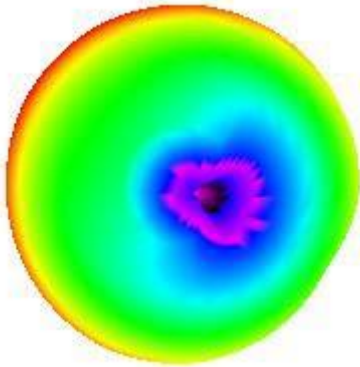


深圳市安弗特电子有限公司  
AFT tech Electronic Co., Ltd. (Shenzhen)

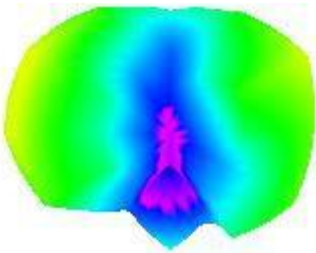
W2100



LTE-B28/12/17

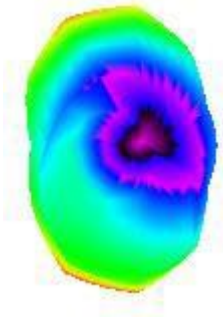


LTE-B7

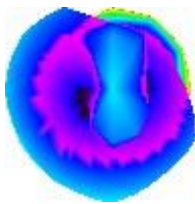


深圳市安弗特电子有限公司  
AFT tech Electronic Co., Ltd. (Shenzhen)

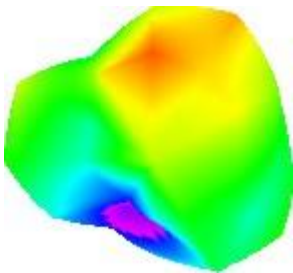
**GPS**



**2.4G WIFI/BT**

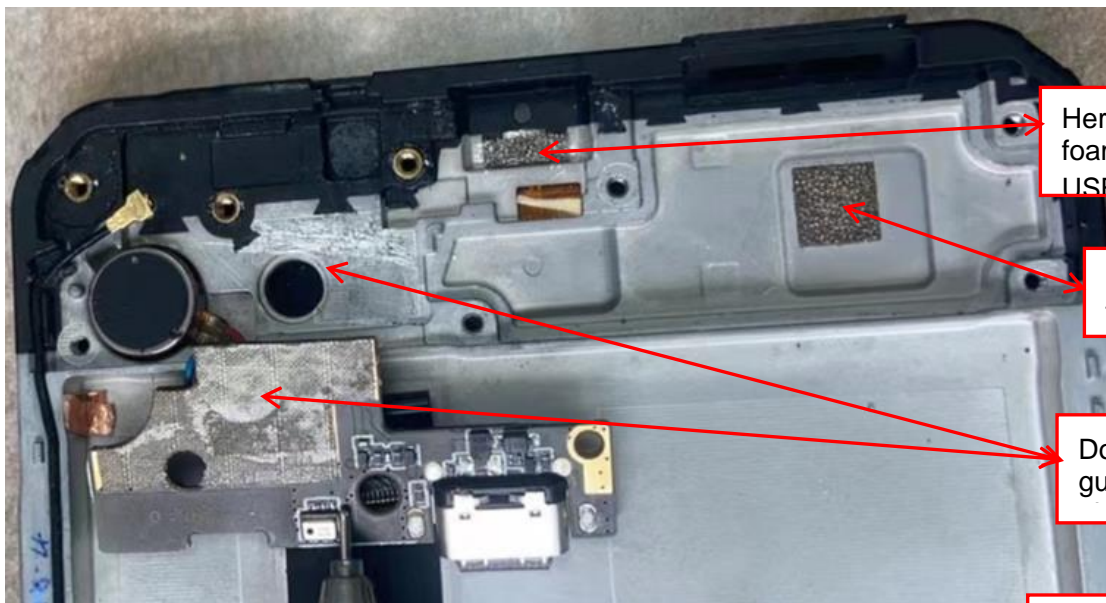
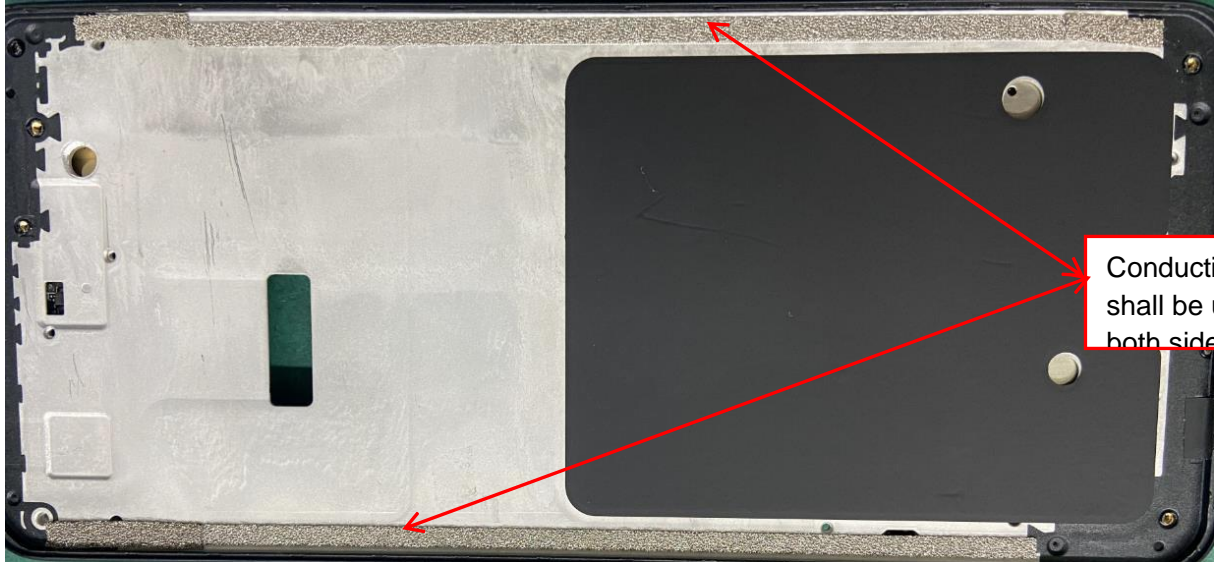


**5G WIFI**



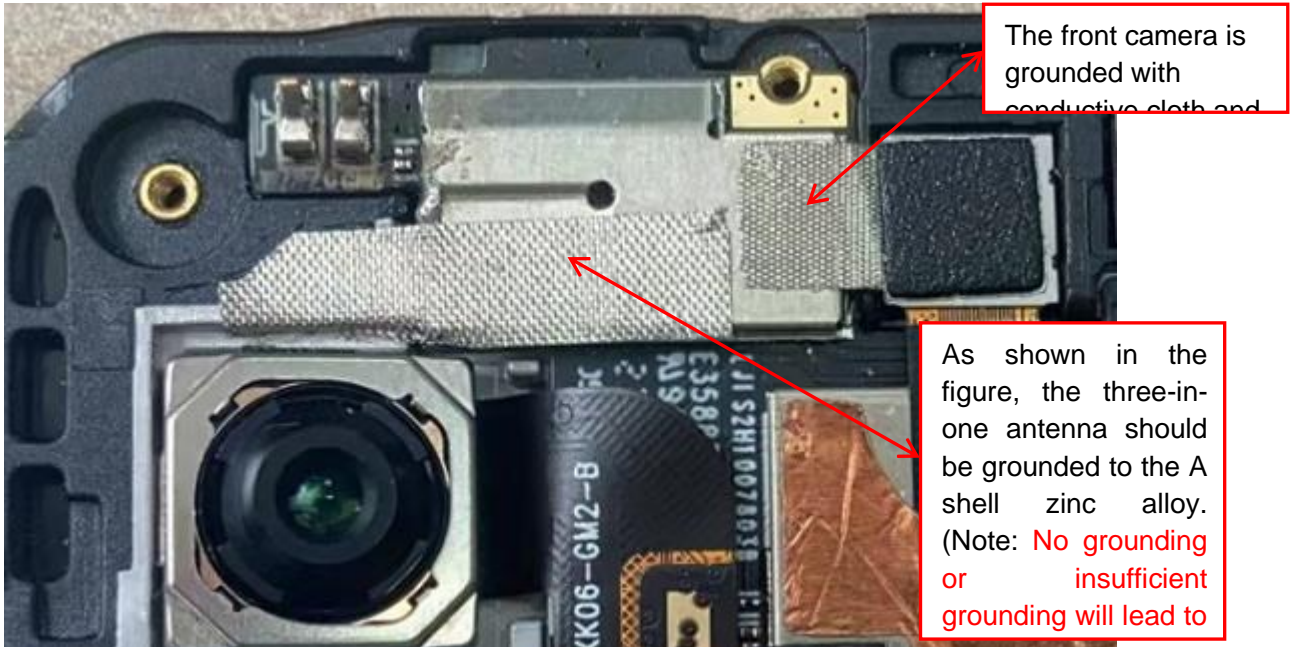
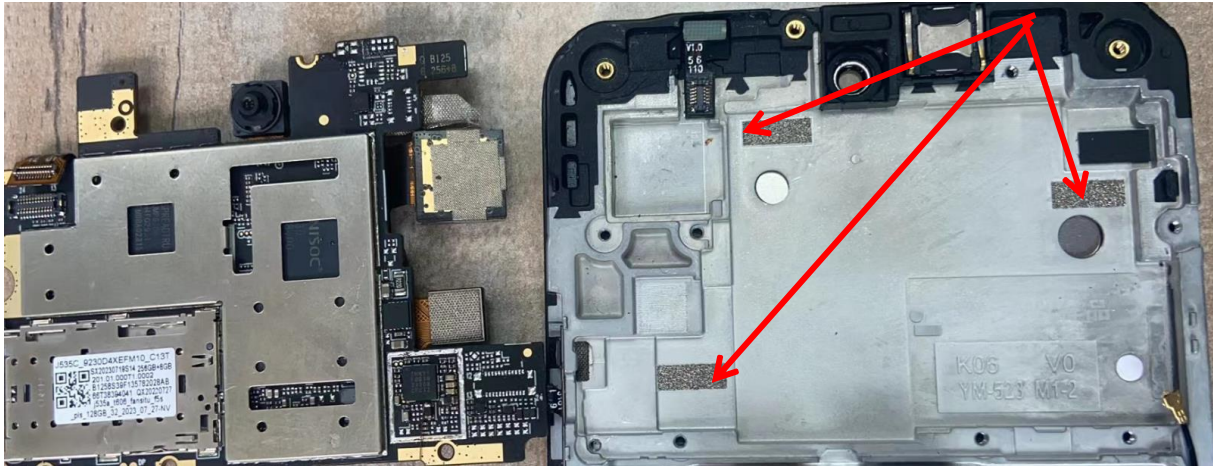
深圳市安弗特电子有限公司  
AFT tech Electronic Co., Ltd. (Shenzhen)

Environmental treatment:



A shell zinc alloy with conductive sponge and motherboard grounding

深圳市安弗特电子有限公司  
AFT tech Electronic Co., Ltd. (Shenzhen)

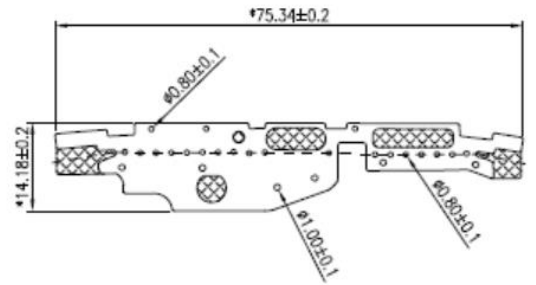
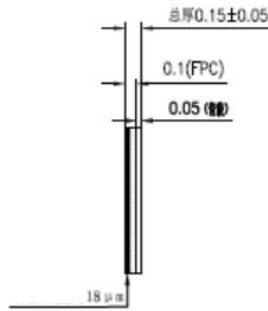
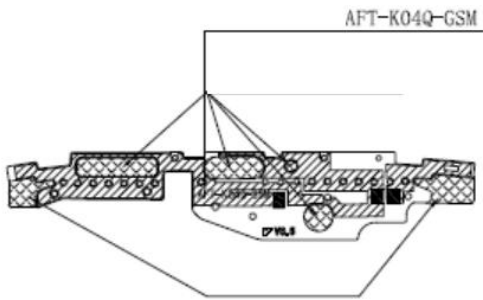
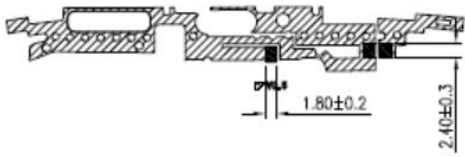


深圳市安弗特电子有限公司  
AFT tech Electronic Co., Ltd. (Shenzhen)

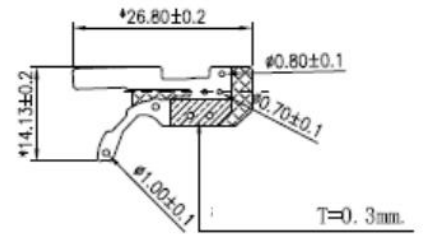
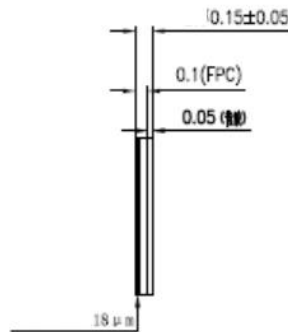
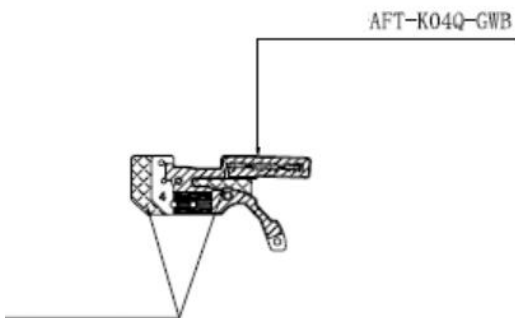
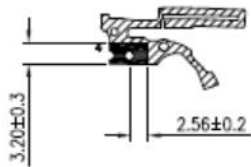


It is recommended to change the environmental treatment here to double-sided conductive cloth. 1. It can play a role in fixing the camera, 2. The grounding will be sufficient.

WWAN ANT



BT WIFI ANT



Diversity ant

