



## ***Appendix A. Plots of T-Coil Measurement***

The plots are shown as follows.

**#01 HAC T-Coil\_CDMA BC0\_RC1 SO3\_Ch1013(Z)**

**DUT: 230902**

Communication System: CDMA2000; Frequency: 824.7 MHz; Duty Cycle: 1:1

Medium: Air Medium parameters used:  $\sigma = 0$  mho/m,  $\epsilon_r = 1$ ;  $\rho = 0$  kg/m<sup>3</sup>

Ambient Temperature : 23.6 °C

DASY5 Configuration:

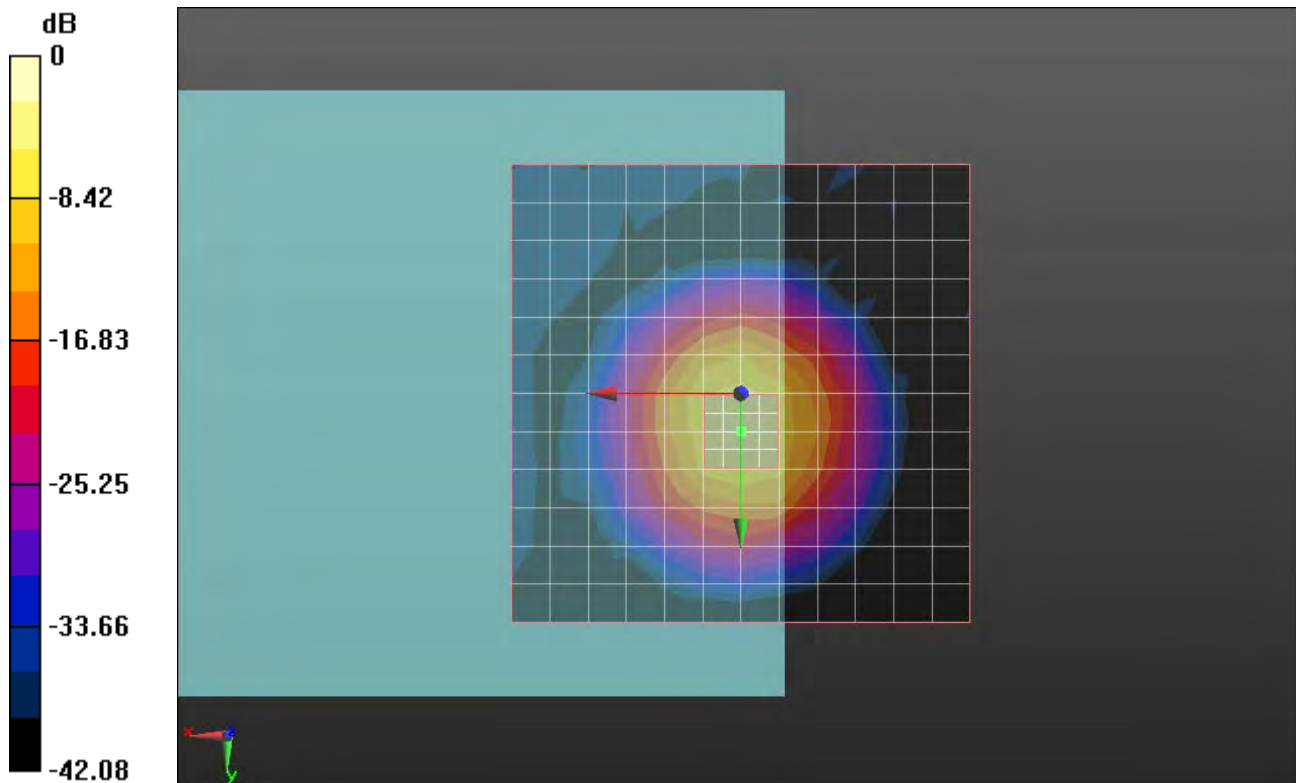
- Probe: AM1DV3 - 3067; ; Calibrated: 2011-12-8
- Electronics: DAE4 Sn1210; Calibrated: 2011-11-18
- Phantom: HAC Test Arch with AMCC; Type: SD HAC P01 BA;
- Measurement SW: DASY52, Version 52.8 (0); SEMCAD X Version 14.4.5 (3634)

**Ch1013/z (axial) fine 2mm 8 x 8/ABM [HAC-2007] SNR(x,y,z) (5x5x1):**

ABM1/ABM2 = 31.22 dB

ABM1 comp = -6.54 dB A/m

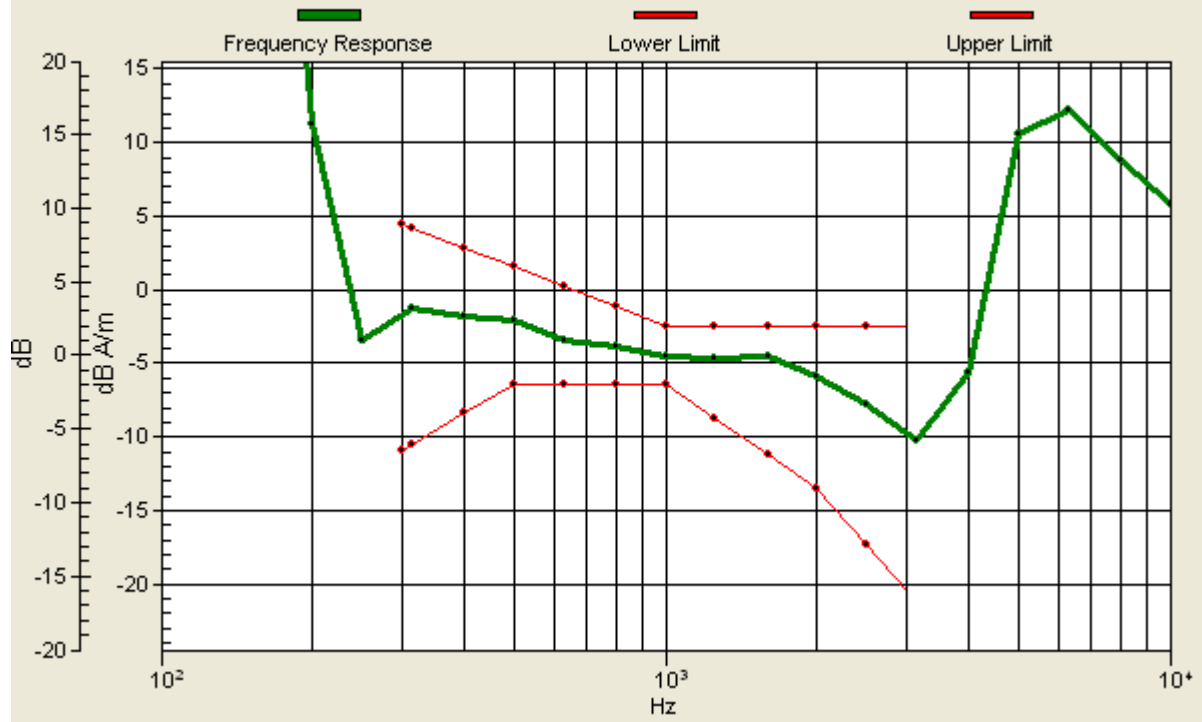
Location: 0, 4.2, 3.7 mm



0 dB = 1.000A/m

# Ch1013/z (axial) wideband at best S/N/ABM [HAC-2007] Freq Resp(x,y,z,f)

Loc: 0, 4.2, 3.7 mm Diff: 2dB



**#01 HAC T-Coil\_CDMA BC0\_RC1 SO3\_Ch1013(X)**

**DUT: 230902**

Communication System: CDMA2000; Frequency: 824.7 MHz; Duty Cycle: 1:1

Medium: Air Medium parameters used:  $\sigma = 0$  mho/m,  $\epsilon_r = 1$ ;  $\rho = 0$  kg/m<sup>3</sup>

Ambient Temperature : 23.6 °C

DASY5 Configuration:

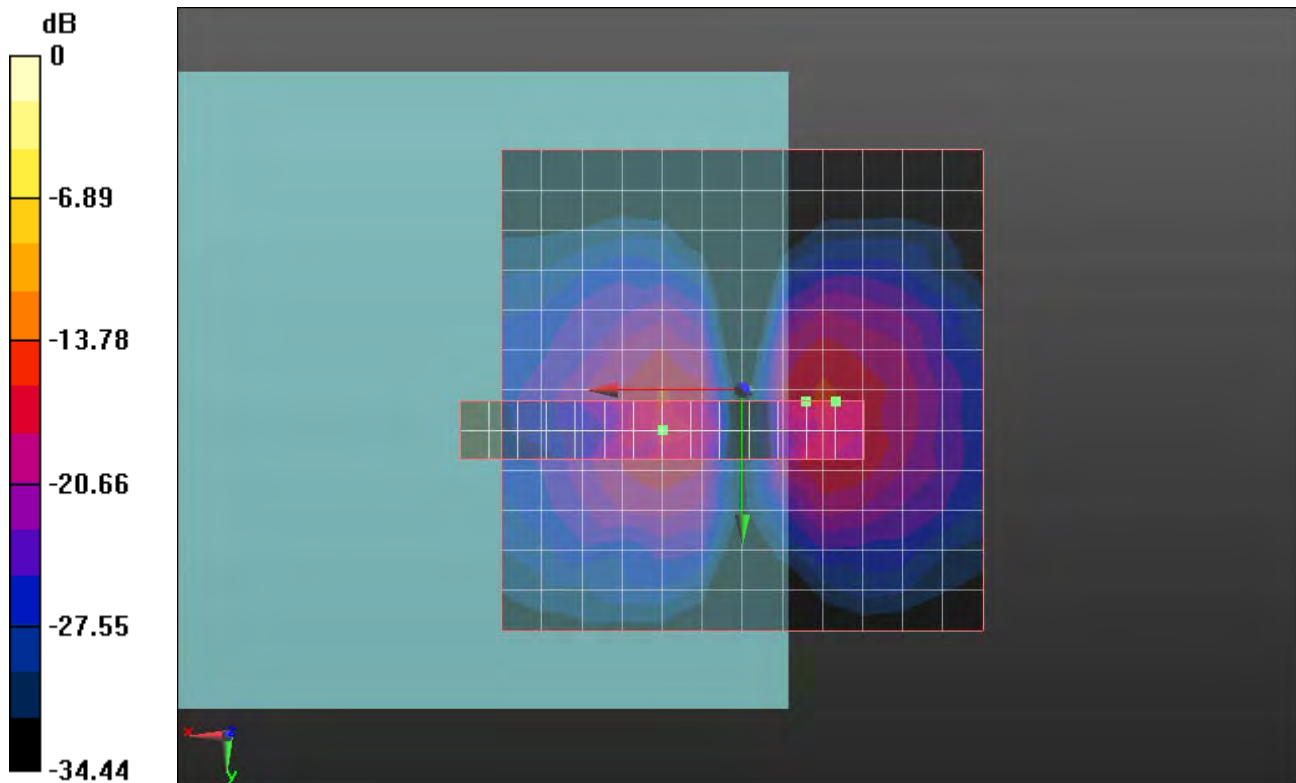
- Probe: AM1DV3 - 3067; ; Calibrated: 2011-12-8
- Electronics: DAE4 Sn1210; Calibrated: 2011-11-18
- Phantom: HAC Test Arch with AMCC; Type: SD HAC P01 BA;
- Measurement SW: DASY52, Version 52.8 (0); SEMCAD X Version 14.4.5 (3634)

**Ch1013/x (longitudinal) fine 3mm 42 x 6/ABM [HAC-2007] SNR(x,y,z) (15x3x1):**

ABM1/ABM2 = 26.81 dB

ABM1 comp = -15.62 dB A/m

Location: -9.7, 1.2, 3.7 mm



0 dB = 1.000A/m

**#01 HAC T-Coil\_CDMA BC0\_RC1 SO3\_Ch1013(Y)**

**DUT: 230902**

Communication System: CDMA2000; Frequency: 824.7 MHz; Duty Cycle: 1:1

Medium: Air Medium parameters used:  $\sigma = 0$  mho/m,  $\epsilon_r = 1$ ;  $\rho = 0$  kg/m<sup>3</sup>

Ambient Temperature : 23.6 °C

DASY5 Configuration:

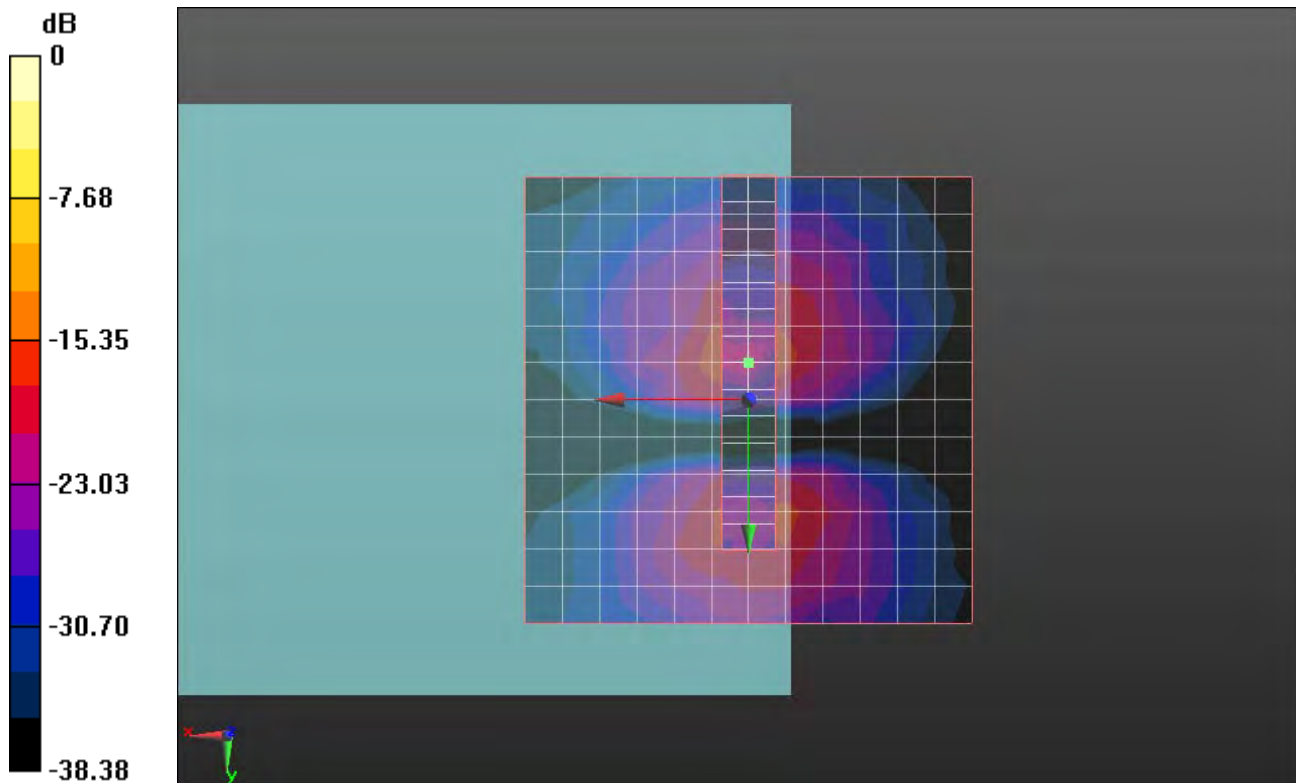
- Probe: AM1DV3 - 3067; ; Calibrated: 2011-12-8
- Electronics: DAE4 Sn1210; Calibrated: 2011-11-18
- Phantom: HAC Test Arch with AMCC; Type: SD HAC P01 BA;
- Measurement SW: DASY52, Version 52.8 (0); SEMCAD X Version 14.4.5 (3634)

**Ch1013/y (transversal) fine 3mm 6 x 42/ABM [HAC-2007] SNR(x,y,z) (3x15x1):**

ABM1/ABM2 = 27.09 dB

ABM1 comp = -14.36 dB A/m

Location: 0, -4.2, 3.7 mm



0 dB = 1.000A/m

**#02 HAC T-Coil\_CDMA BC0\_RC1 SO3\_Ch384(Z)**

**DUT: 230902**

Communication System: CDMA2000; Frequency: 836.52 MHz; Duty Cycle: 1:1

Medium: Air Medium parameters used:  $\sigma = 0$  mho/m,  $\epsilon_r = 1$ ;  $\rho = 0$  kg/m<sup>3</sup>

Ambient Temperature : 23.6 °C

DASY5 Configuration:

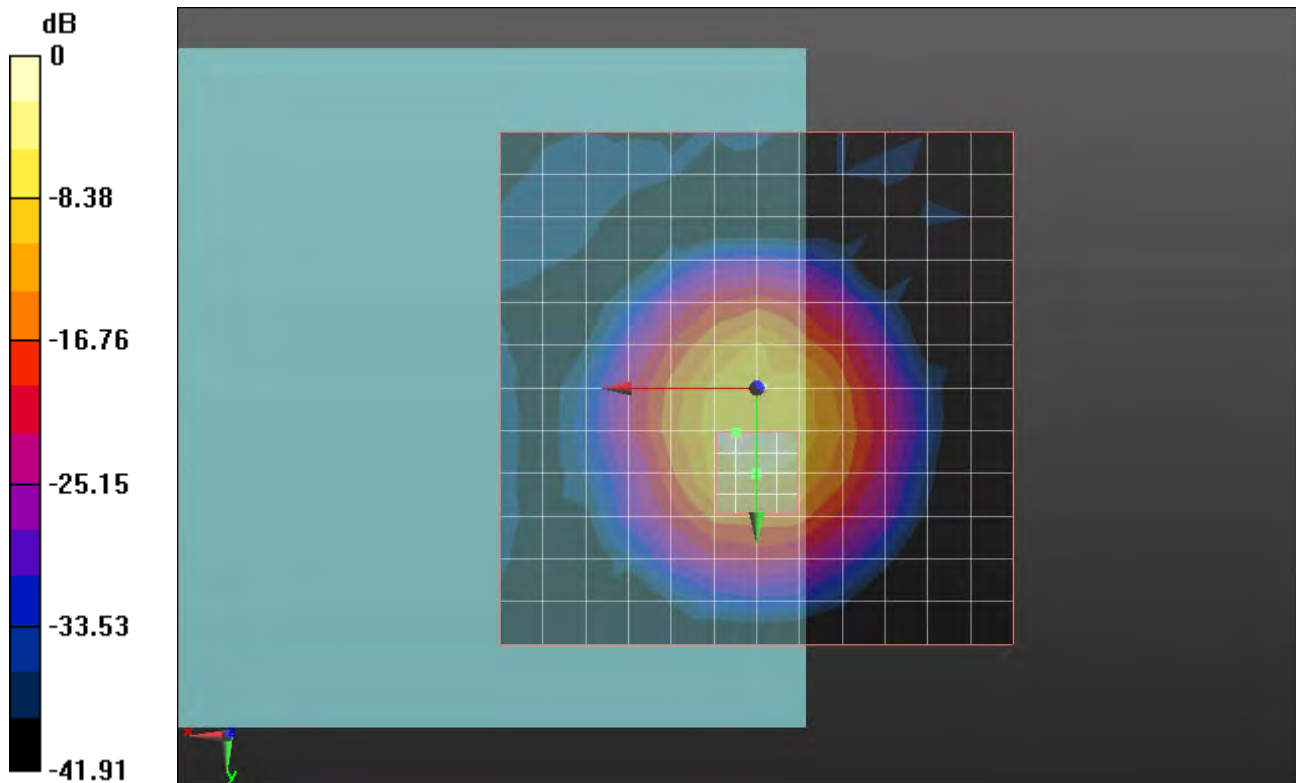
- Probe: AM1DV3 - 3067; ; Calibrated: 2011-12-8
- Electronics: DAE4 Sn1210; Calibrated: 2011-11-18
- Phantom: HAC Test Arch with AMCC; Type: SD HAC P01 BA;
- Measurement SW: DASY52, Version 52.8 (0); SEMCAD X Version 14.4.5 (3634)

**Ch384/z (axial) fine 2mm 8 x 8/ABM [HAC-2007] SNR(x,y,z) (5x5x1):**

ABM1/ABM2 = 31.65 dB

ABM1 comp = -6.04 dB A/m

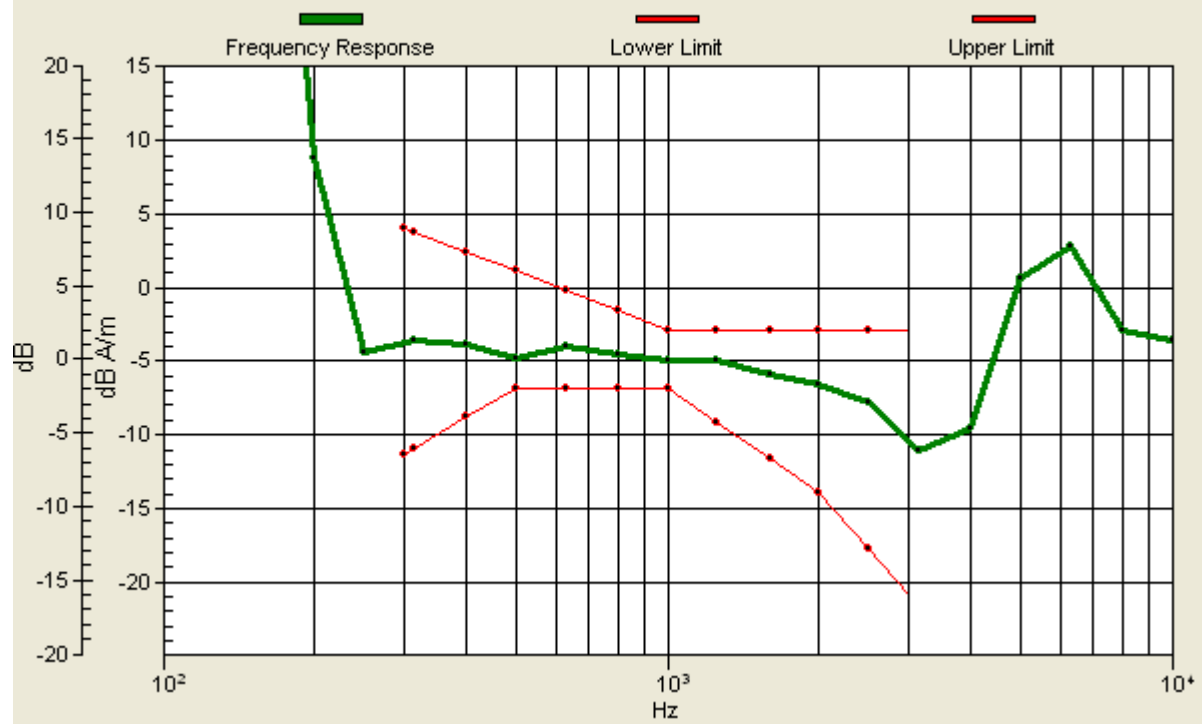
Location: 2, 4.3, 3.7 mm



0 dB = 1.000A/m

# Ch384/z (axial) wideband at best S/N/ABM [HAC-2007] Freq Resp(x,y,z,f)

Loc: 2, 4.3, 3.7 mm Diff: 2dB



**#02 HAC T-Coil\_CDMA BC0\_RC1 SO3\_Ch384(X)**

**DUT: 230902**

Communication System: CDMA2000; Frequency: 836.52 MHz; Duty Cycle: 1:1

Medium: Air Medium parameters used:  $\sigma = 0$  mho/m,  $\epsilon_r = 1$ ;  $\rho = 0$  kg/m<sup>3</sup>

Ambient Temperature : 23.6 °C

DASY5 Configuration:

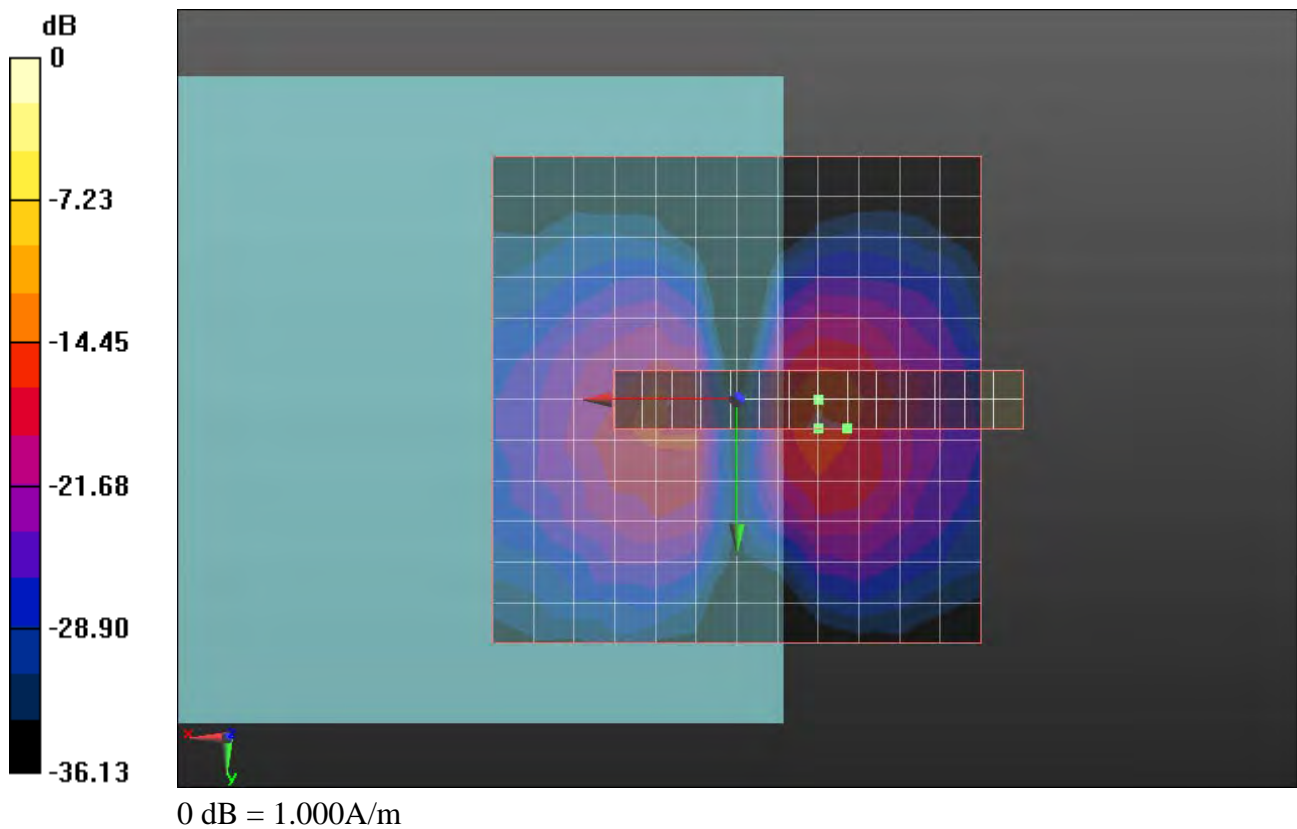
- Probe: AM1DV3 - 3067; ; Calibrated: 2011-12-8
- Electronics: DAE4 Sn1210; Calibrated: 2011-11-18
- Phantom: HAC Test Arch with AMCC; Type: SD HAC P01 BA;
- Measurement SW: DASY52, Version 52.8 (0); SEMCAD X Version 14.4.5 (3634)

**Ch384/x (longitudinal) fine 3mm 42 x 6/ABM [HAC-2007] SNR(x,y,z) (15x3x1):**

ABM1/ABM2 = 28.82 dB

ABM1 comp = -15.51 dB A/m

Location: -11.3, 3, 3.7 mm





**#02 HAC T-Coil\_CDMA BC0\_RC1 SO3\_Ch384(Y)**

**DUT: 230902**

Communication System: CDMA2000; Frequency: 836.52 MHz; Duty Cycle: 1:1

Medium: Air Medium parameters used:  $\sigma = 0$  mho/m,  $\epsilon_r = 1$ ;  $\rho = 0$  kg/m<sup>3</sup>

Ambient Temperature : 23.6 °C

DASY5 Configuration:

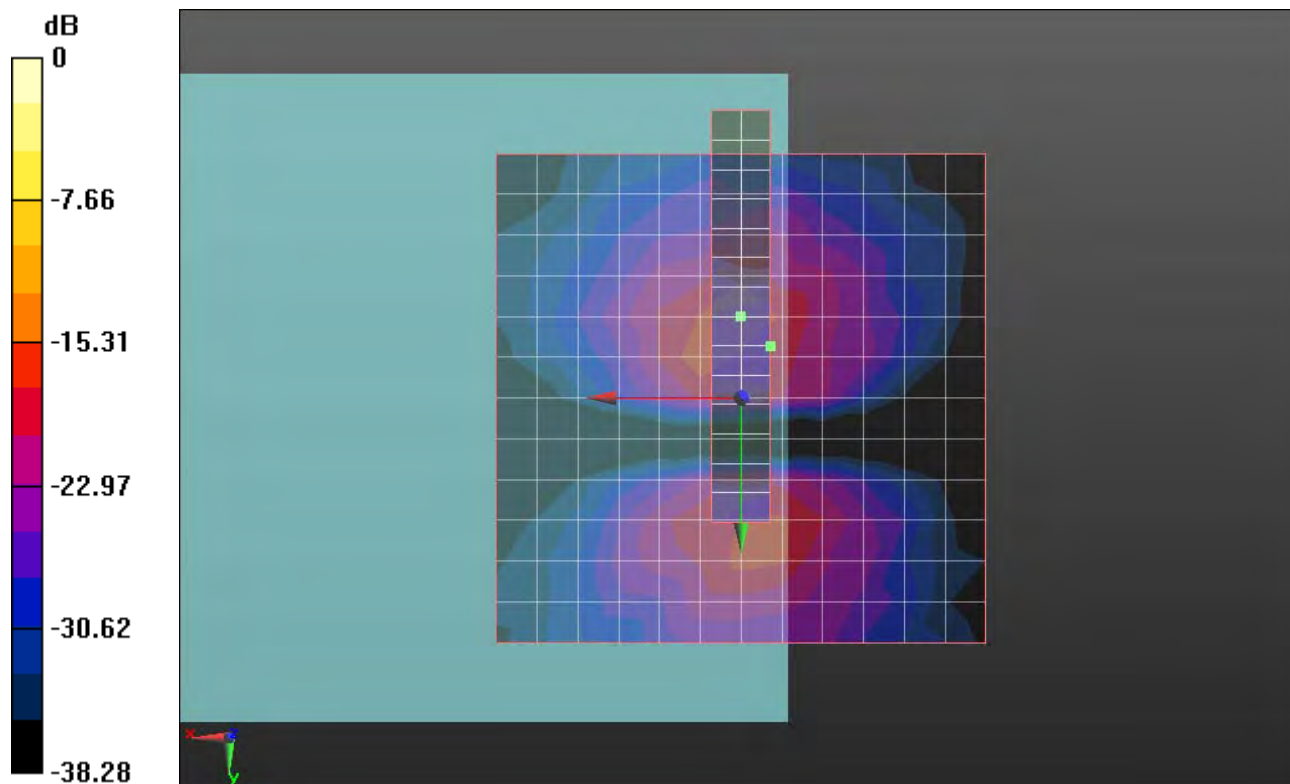
- Probe: AM1DV3 - 3067; ; Calibrated: 2011-12-8
- Electronics: DAE4 Sn1210; Calibrated: 2011-11-18
- Phantom: HAC Test Arch with AMCC; Type: SD HAC P01 BA;
- Measurement SW: DASY52, Version 52.8 (0); SEMCAD X Version 14.4.5 (3634)

**Ch384/y (transversal) fine 3mm 6 x 42/ABM [HAC-2007] SNR(x,y,z) (3x15x1):**

ABM1/ABM2 = 25.57 dB

ABM1 comp = -15.94 dB A/m

Location: -3, -5.3, 3.7 mm



0 dB = 1.000A/m

**#03 HAC T-Coil\_CDMA BC0\_RC1 SO3\_Ch777(Z)**

**DUT: 230902**

Communication System: CDMA2000; Frequency: 848.31 MHz; Duty Cycle: 1:1

Medium: Air Medium parameters used:  $\sigma = 0$  mho/m,  $\epsilon_r = 1$ ;  $\rho = 0$  kg/m<sup>3</sup>

Ambient Temperature : 23.6 °C

DASY5 Configuration:

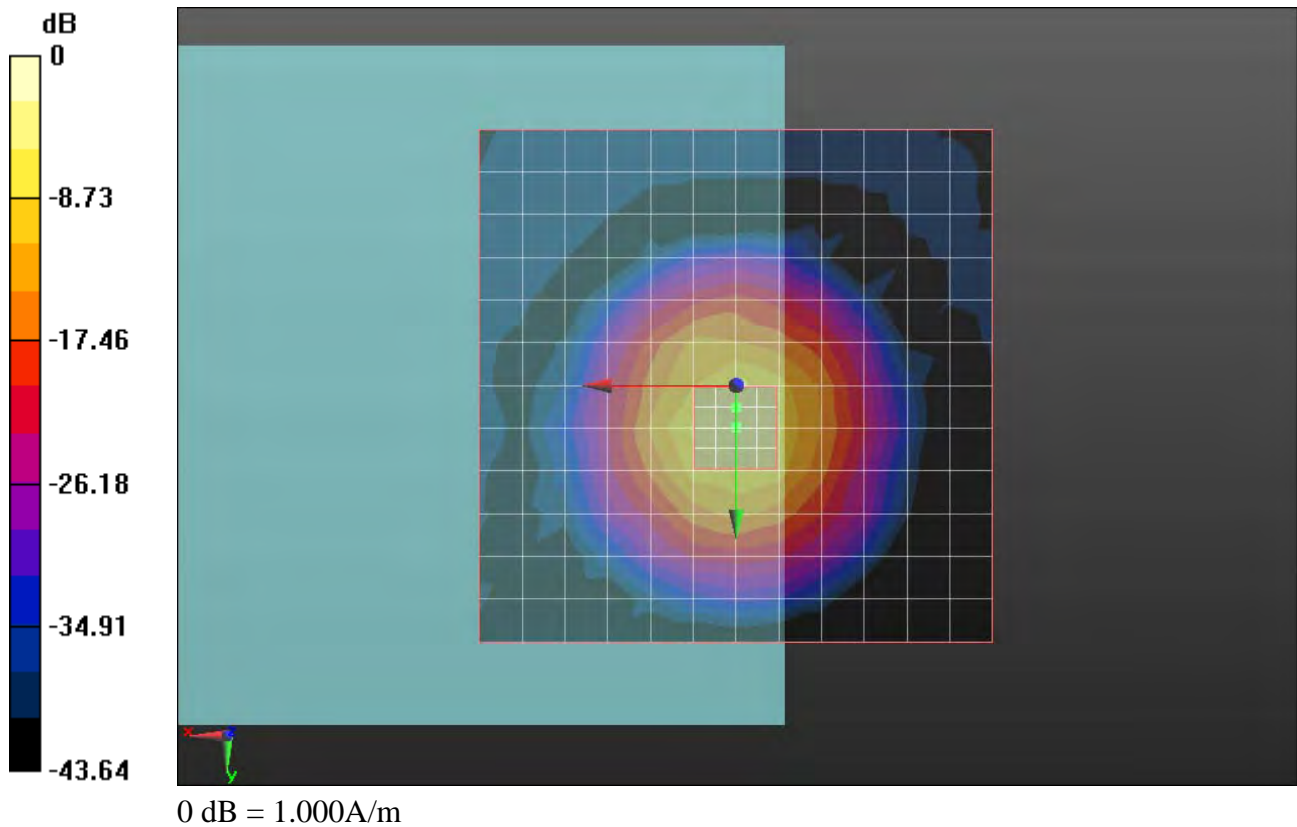
- Probe: AM1DV3 - 3067; ; Calibrated: 2011-12-8
- Electronics: DAE4 Sn1210; Calibrated: 2011-11-18
- Phantom: HAC Test Arch with AMCC; Type: SD HAC P01 BA;
- Measurement SW: DASY52, Version 52.8 (0); SEMCAD X Version 14.4.5 (3634)

**Ch777/z (axial) fine 2mm 8 x 8/ABM [HAC-2007] SNR(x,y,z) (5x5x1):**

ABM1/ABM2 = 32.48 dB

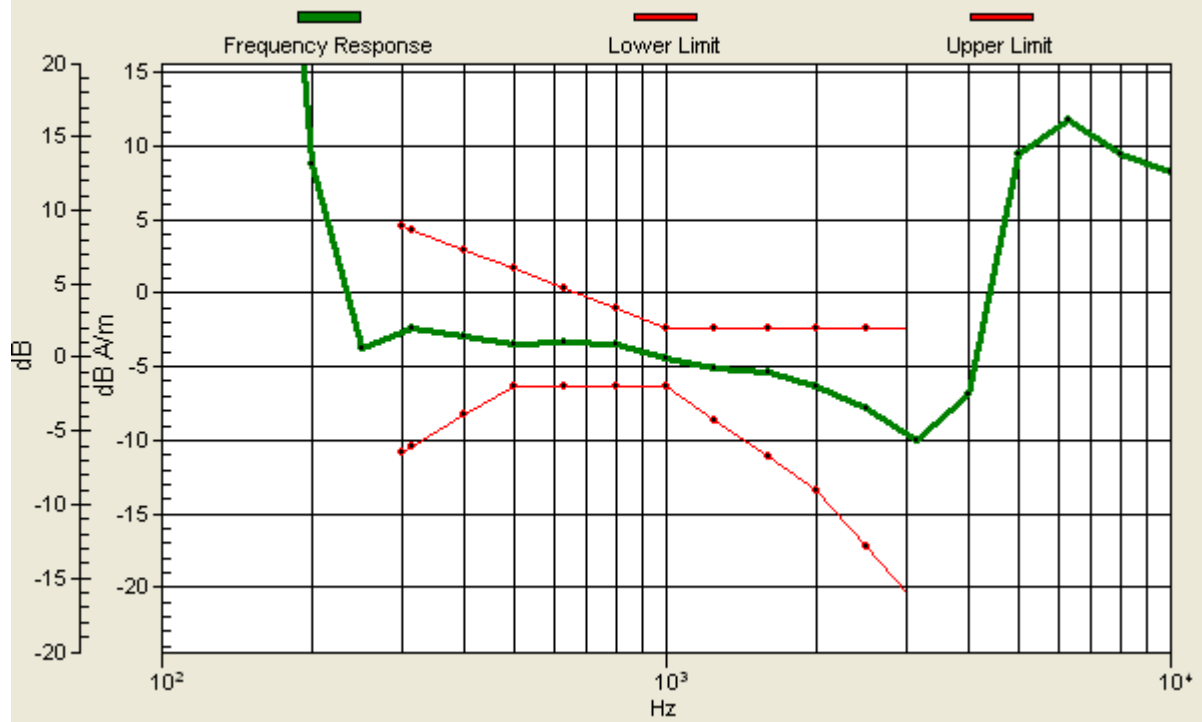
ABM1 comp = -6.52 dB A/m

Location: 0, 2.2, 3.7 mm



# Ch777/z (axial) wideband at best S/N/ABM [HAC-2007] Freq Resp(x,y,z,f)

Loc: 0, 2.2, 3.7 mm Diff: 2dB



**#03 HAC T-Coil\_CDMA BC0\_RC1 SO3\_Ch777(X)**

**DUT: 230902**

Communication System: CDMA2000; Frequency: 848.31 MHz; Duty Cycle: 1:1

Medium: Air Medium parameters used:  $\sigma = 0$  mho/m,  $\epsilon_r = 1$ ;  $\rho = 0$  kg/m<sup>3</sup>

Ambient Temperature : 23.6 °C

DASY5 Configuration:

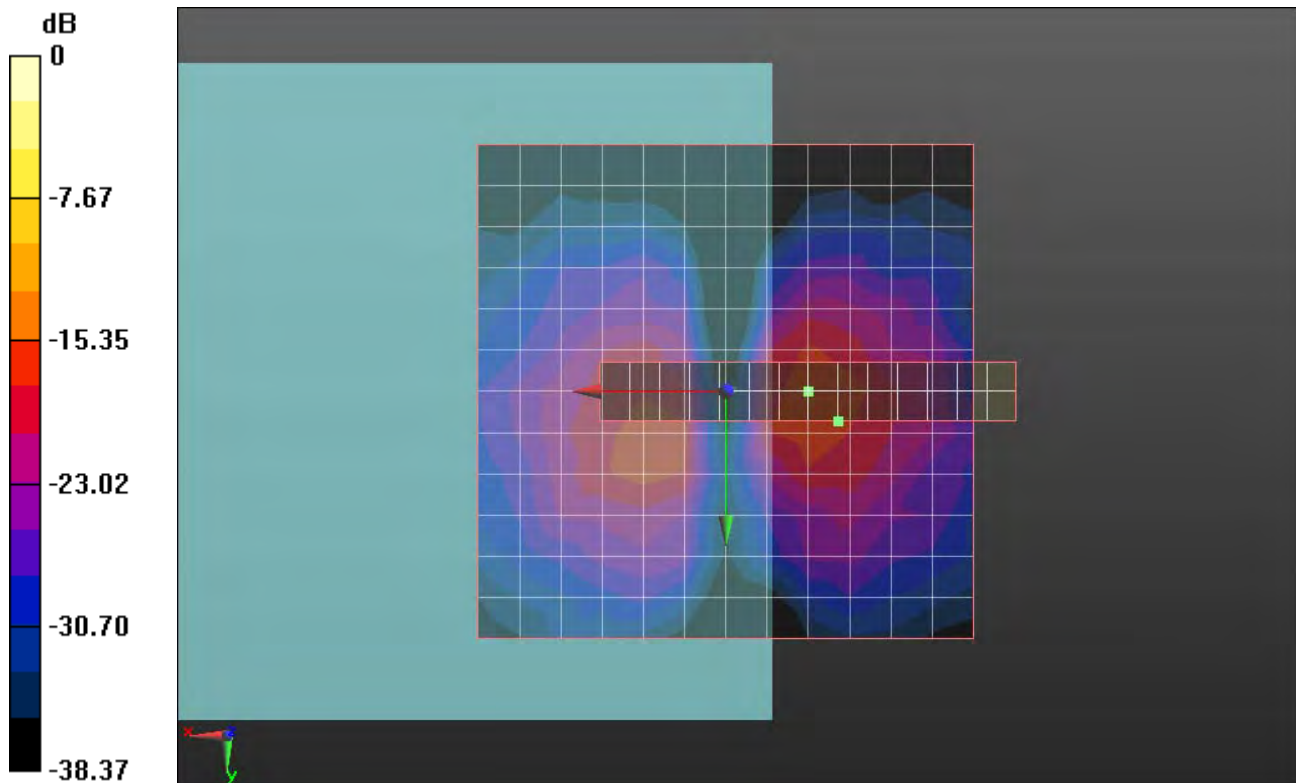
- Probe: AM1DV3 - 3067; ; Calibrated: 2011-12-8
- Electronics: DAE4 Sn1210; Calibrated: 2011-11-18
- Phantom: HAC Test Arch with AMCC; Type: SD HAC P01 BA;
- Measurement SW: DASY52, Version 52.8 (0); SEMCAD X Version 14.4.5 (3634)

**Ch777/x (longitudinal) fine 3mm 42 x 6/ABM [HAC-2007] SNR(x,y,z) (15x3x1):**

ABM1/ABM2 = 33.58 dB

ABM1 comp = -15.09 dB A/m

Location: -11.3, 3, 3.7 mm



0 dB = 1.000A/m

**#03 HAC T-Coil\_CDMA BC0\_RC1 SO3\_Ch777(Y)**

**DUT: 230902**

Communication System: CDMA2000; Frequency: 848.31 MHz; Duty Cycle: 1:1

Medium: Air Medium parameters used:  $\sigma = 0$  mho/m,  $\epsilon_r = 1$ ;  $\rho = 0$  kg/m<sup>3</sup>

Ambient Temperature : 23.6 °C

DASY5 Configuration:

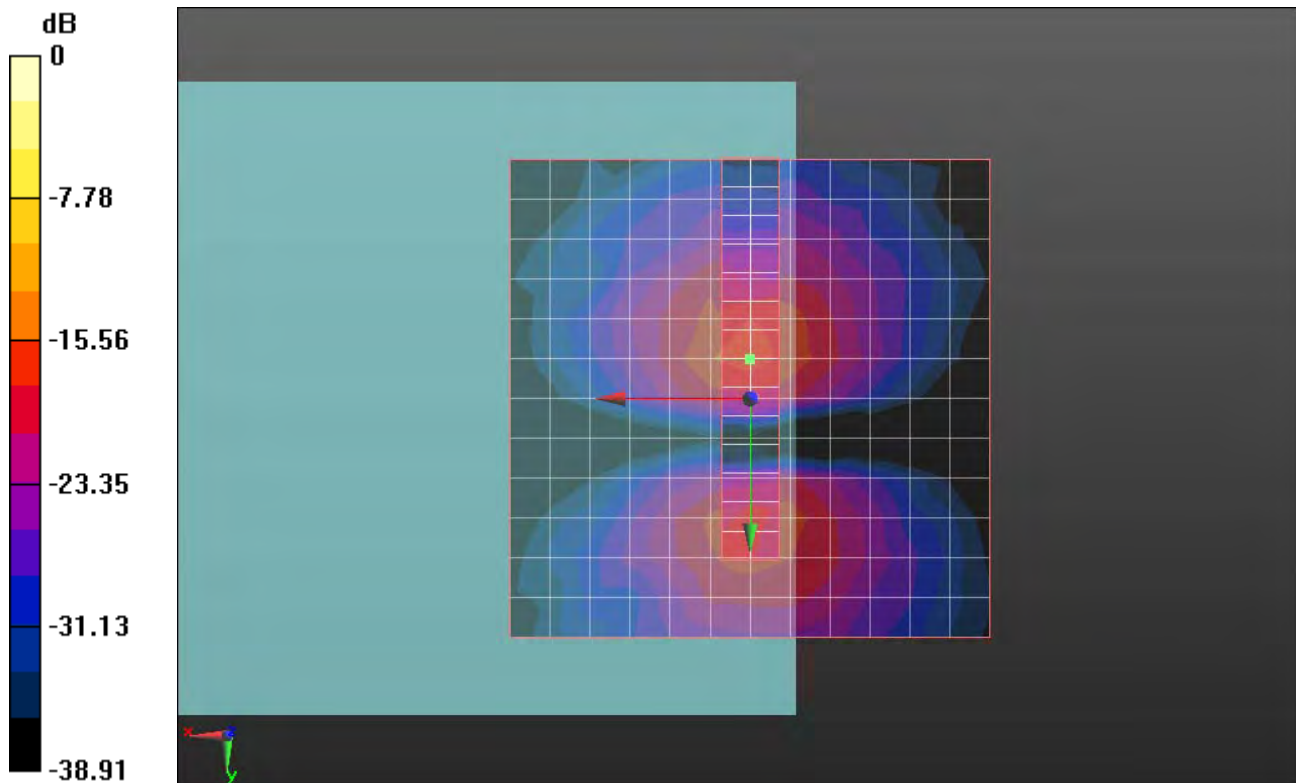
- Probe: AM1DV3 - 3067; ; Calibrated: 2011-12-8
- Electronics: DAE4 Sn1210; Calibrated: 2011-11-18
- Phantom: HAC Test Arch with AMCC; Type: SD HAC P01 BA;
- Measurement SW: DASY52, Version 52.8 (0); SEMCAD X Version 14.4.5 (3634)

**Ch777/y (transversal) fine 3mm 6 x 42/ABM [HAC-2007] SNR(x,y,z) (3x15x1):**

ABM1/ABM2 = 26.24 dB

ABM1 comp = -15.24 dB A/m

Location: 0, -4.2, 3.7 mm



0 dB = 1.000A/m

**#04 HAC T-Coil\_CDMA BC1\_RC1 SO3\_Ch25(Z)**

**DUT: 230902**

Communication System: CDMA2000; Frequency: 1851.25 MHz; Duty Cycle: 1:1

Medium: Air Medium parameters used:  $\sigma = 0$  mho/m,  $\epsilon_r = 1$ ;  $\rho = 0$  kg/m<sup>3</sup>

Ambient Temperature : 23.6 °C

DASY5 Configuration:

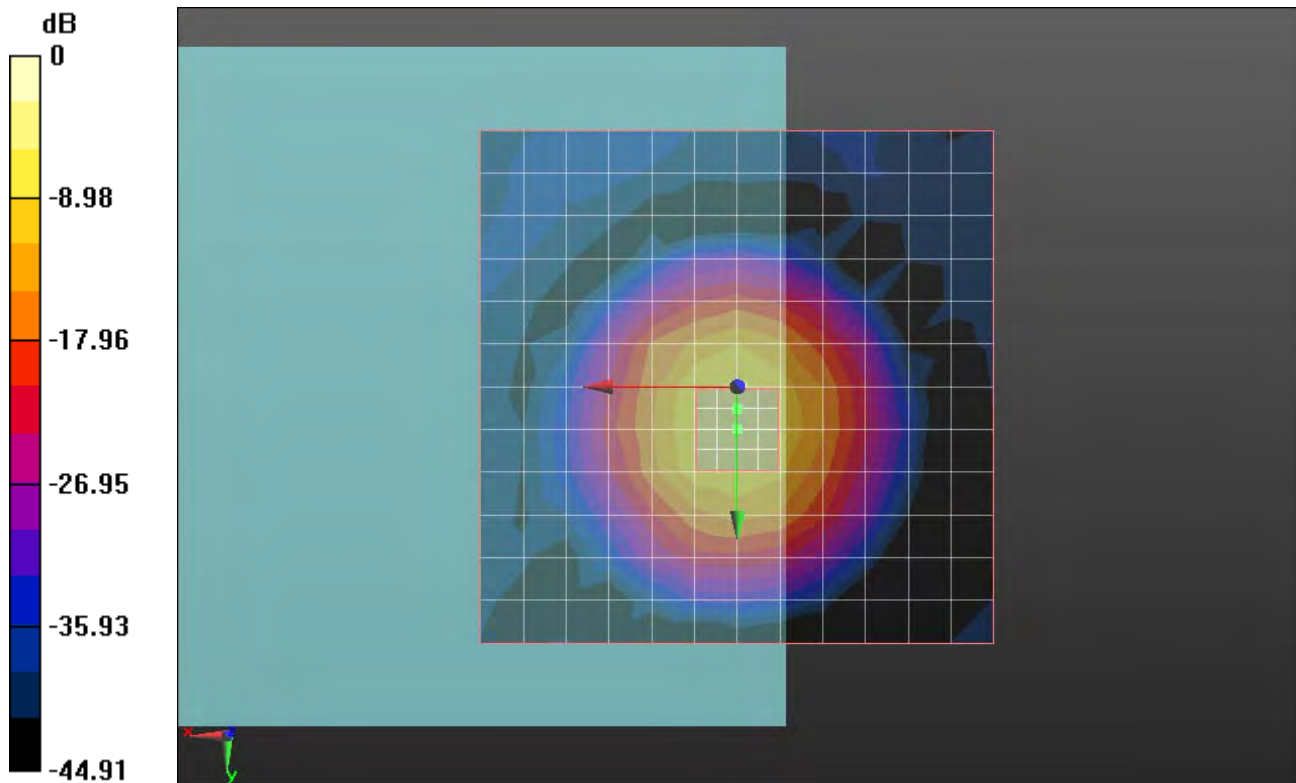
- Probe: AM1DV3 - 3067; ; Calibrated: 2011-12-8
- Electronics: DAE4 Sn1210; Calibrated: 2011-11-18
- Phantom: HAC Test Arch with AMCC; Type: SD HAC P01 BA;
- Measurement SW: DASY52, Version 52.8 (0); SEMCAD X Version 14.4.5 (3634)

**Ch25/z (axial) fine 2mm 8 x 8/ABM [HAC-2007] SNR(x,y,z) (5x5x1):**

ABM1/ABM2 = 32.38 dB

ABM1 comp = -6.47 dB A/m

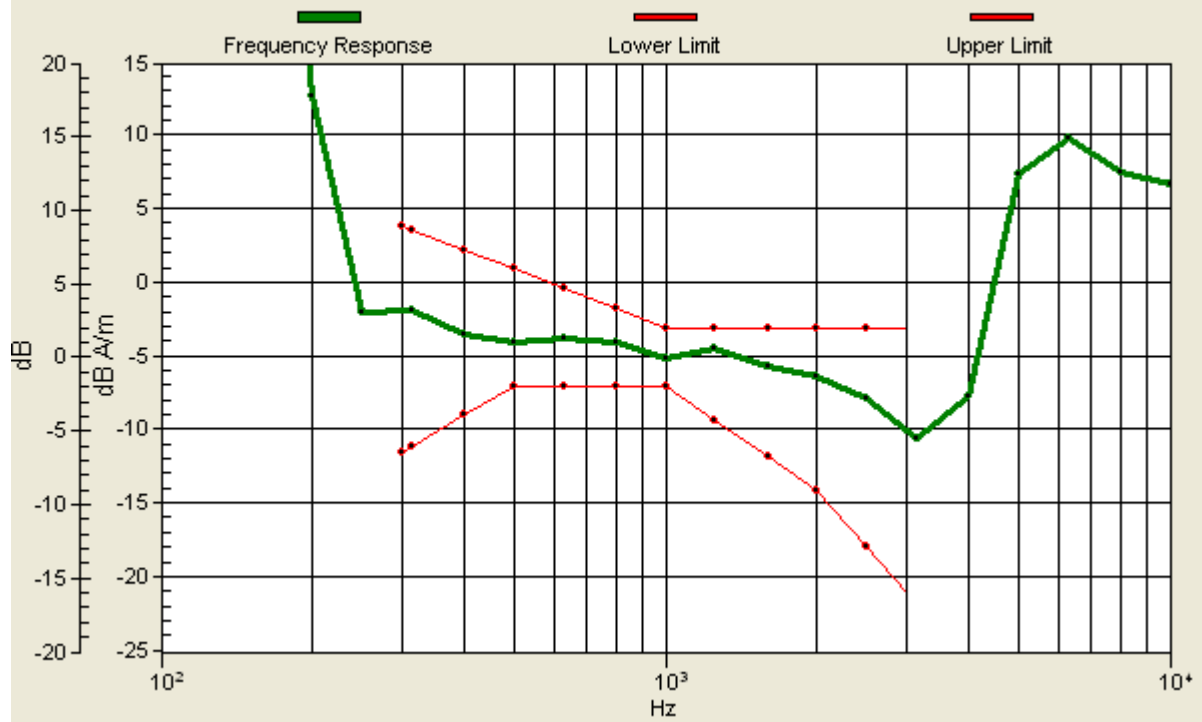
Location: 0, 2.2, 3.7 mm



0 dB = 1.000A/m

# Ch25/z (axial) wideband at best S/N/ABM [HAC-2007] Freq Resp(x,y,z,f)

Loc: 0, 2.2, 3.7 mm Diff: 1.36dB



**#04 HAC T-Coil\_CDMA BC1\_RC1 SO3\_Ch25(X)**

**DUT: 230902**

Communication System: CDMA2000; Frequency: 1851.25 MHz; Duty Cycle: 1:1

Medium: Air Medium parameters used:  $\sigma = 0$  mho/m,  $\epsilon_r = 1$ ;  $\rho = 0$  kg/m<sup>3</sup>

Ambient Temperature : 23.6 °C

DASY5 Configuration:

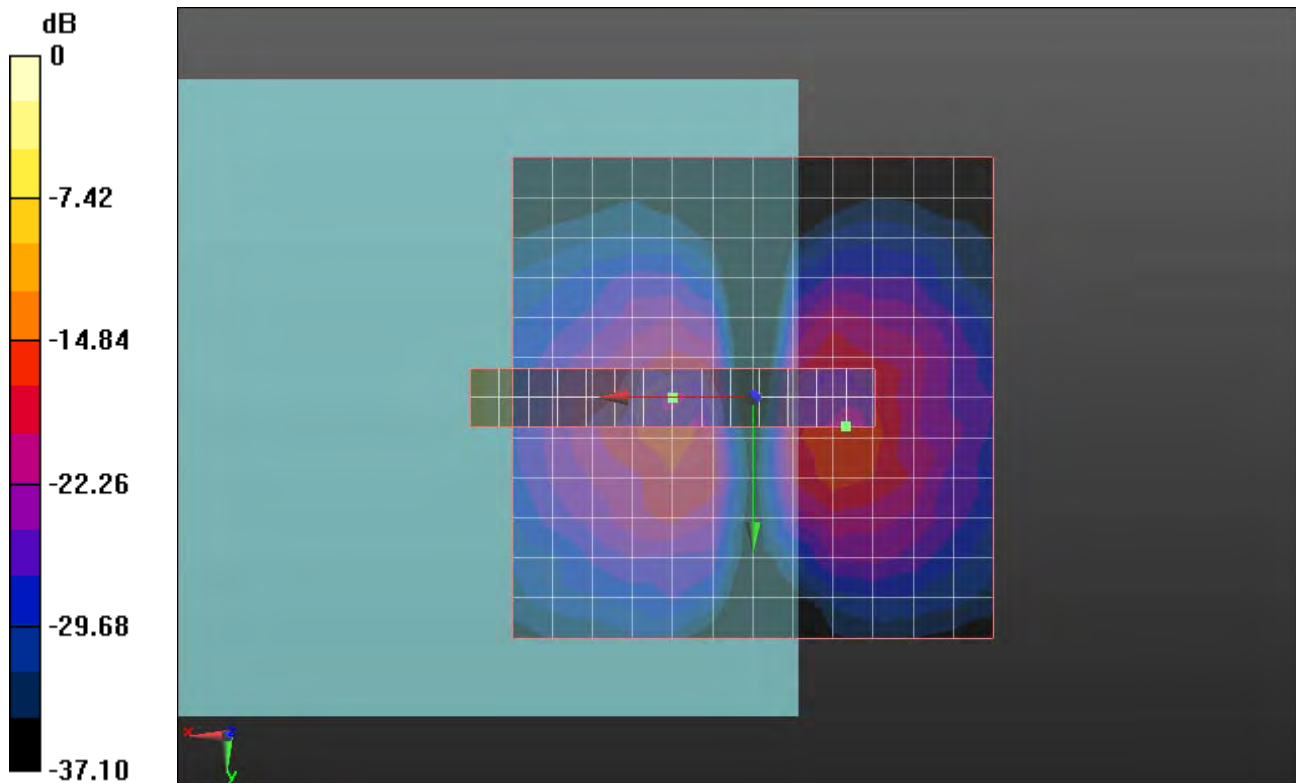
- Probe: AM1DV3 - 3067; ; Calibrated: 2011-12-8
- Electronics: DAE4 Sn1210; Calibrated: 2011-11-18
- Phantom: HAC Test Arch with AMCC; Type: SD HAC P01 BA;
- Measurement SW: DASY52, Version 52.8 (0); SEMCAD X Version 14.4.5 (3634)

**Ch25/x (longitudinal) fine 3mm 42 x 6/ABM [HAC-2007] SNR(x,y,z) (15x3x1):**

ABM1/ABM2 = 30.87 dB

ABM1 comp = -14.67 dB A/m

Location: -9.7, 3, 3.7 mm



0 dB = 1.000A/m



**#04 HAC T-Coil\_CDMA BC1\_RC1 SO3\_Ch25(Y)**

**DUT: 230902**

Communication System: CDMA2000; Frequency: 1851.25 MHz; Duty Cycle: 1:1

Medium: Air Medium parameters used:  $\sigma = 0$  mho/m,  $\epsilon_r = 1$ ;  $\rho = 0$  kg/m<sup>3</sup>

Ambient Temperature : 23.6 °C

DASY5 Configuration:

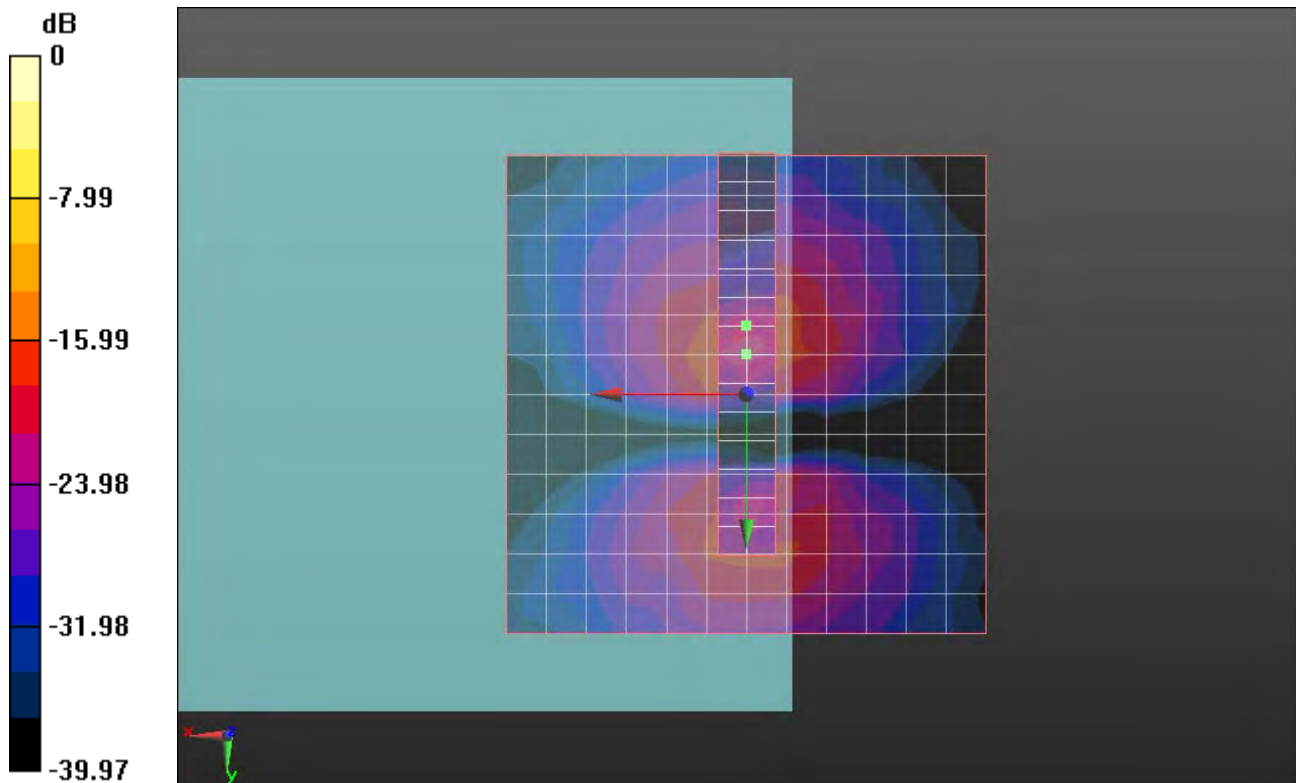
- Probe: AM1DV3 - 3067; ; Calibrated: 2011-12-8
- Electronics: DAE4 Sn1210; Calibrated: 2011-11-18
- Phantom: HAC Test Arch with AMCC; Type: SD HAC P01 BA;
- Measurement SW: DASY52, Version 52.8 (0); SEMCAD X Version 14.4.5 (3634)

**Ch25/y (transversal) fine 3mm 6 x 42/ABM [HAC-2007] SNR(x,y,z) (3x15x1):**

ABM1/ABM2 = 26.70 dB

ABM1 comp = -14.76 dB A/m

Location: 0, -7.2, 3.7 mm



0 dB = 1.000A/m

**#05 HAC T-Coil\_CDMA BC1\_RC1 SO3\_Ch600(Z)**

**DUT: 230902**

Communication System: CDMA2000; Frequency: 1880 MHz; Duty Cycle: 1:1

Medium: Air Medium parameters used:  $\sigma = 0$  mho/m,  $\epsilon_r = 1$ ;  $\rho = 0$  kg/m<sup>3</sup>

Ambient Temperature : 23.6 °C

DASY5 Configuration:

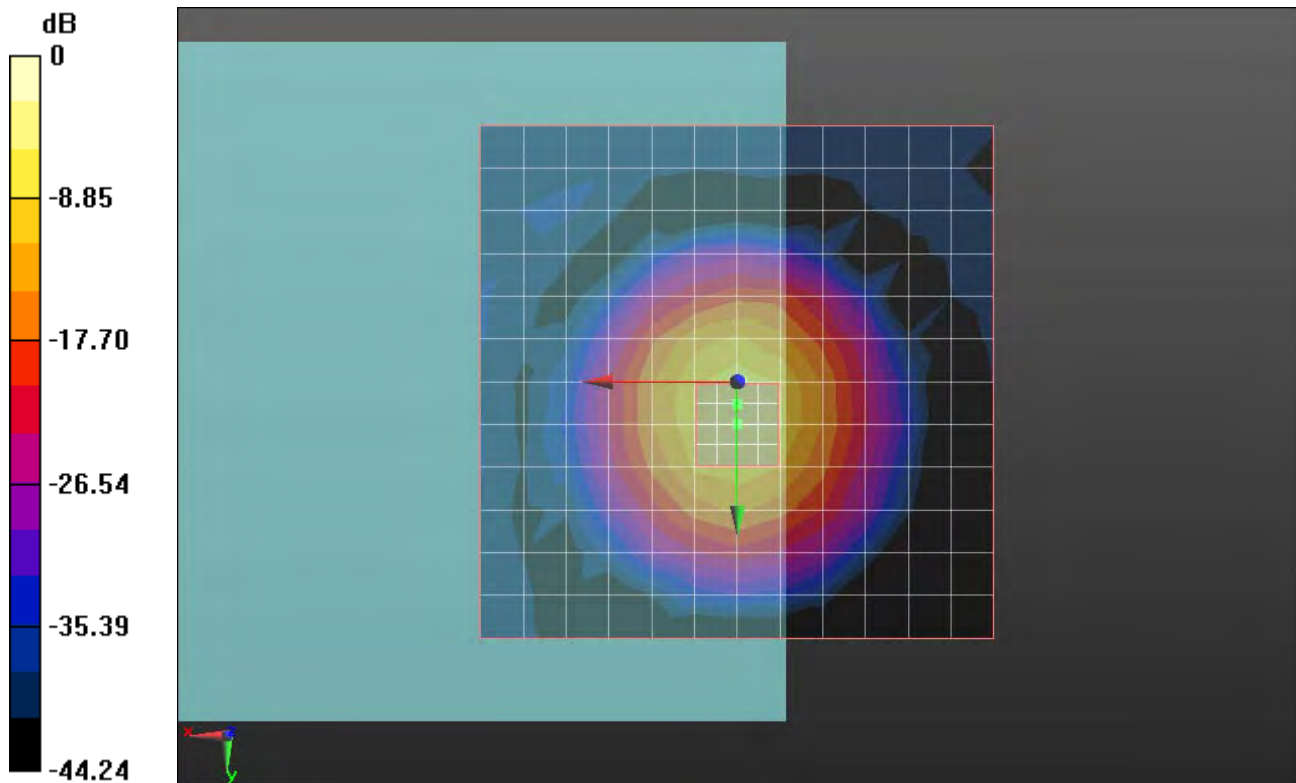
- Probe: AM1DV3 - 3067; ; Calibrated: 2011-12-8
- Electronics: DAE4 Sn1210; Calibrated: 2011-11-18
- Phantom: HAC Test Arch with AMCC; Type: SD HAC P01 BA;
- Measurement SW: DASY52, Version 52.8 (0); SEMCAD X Version 14.4.5 (3634)

**Ch600/z (axial) fine 2mm 8 x 8/ABM [HAC-2007] SNR(x,y,z) (5x5x1):**

ABM1/ABM2 = 31.27 dB

ABM1 comp = -6.38 dB A/m

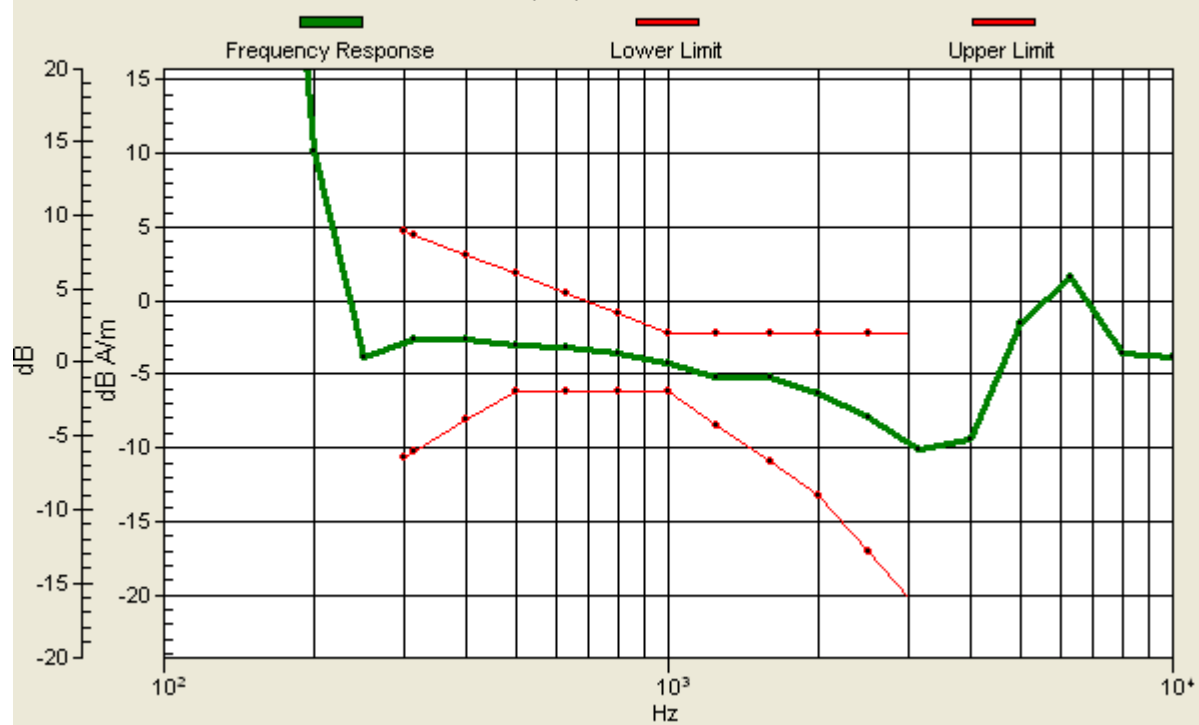
Location: 0, 2.2, 3.7 mm



0 dB = 1.000A/m

# Ch600/z (axial) wideband at best S/N/ABM [HAC-2007] Freq Resp(x,y,z,f)

Loc: 0, 2.2, 3.7 mm Diff: 2dB



**#05 HAC T-Coil\_CDMA BC1\_RC1 SO3\_Ch600(X)**

**DUT: 230902**

Communication System: CDMA2000; Frequency: 1880 MHz; Duty Cycle: 1:1

Medium: Air Medium parameters used:  $\sigma = 0$  mho/m,  $\epsilon_r = 1$ ;  $\rho = 0$  kg/m<sup>3</sup>

Ambient Temperature : 23.6 °C

DASY5 Configuration:

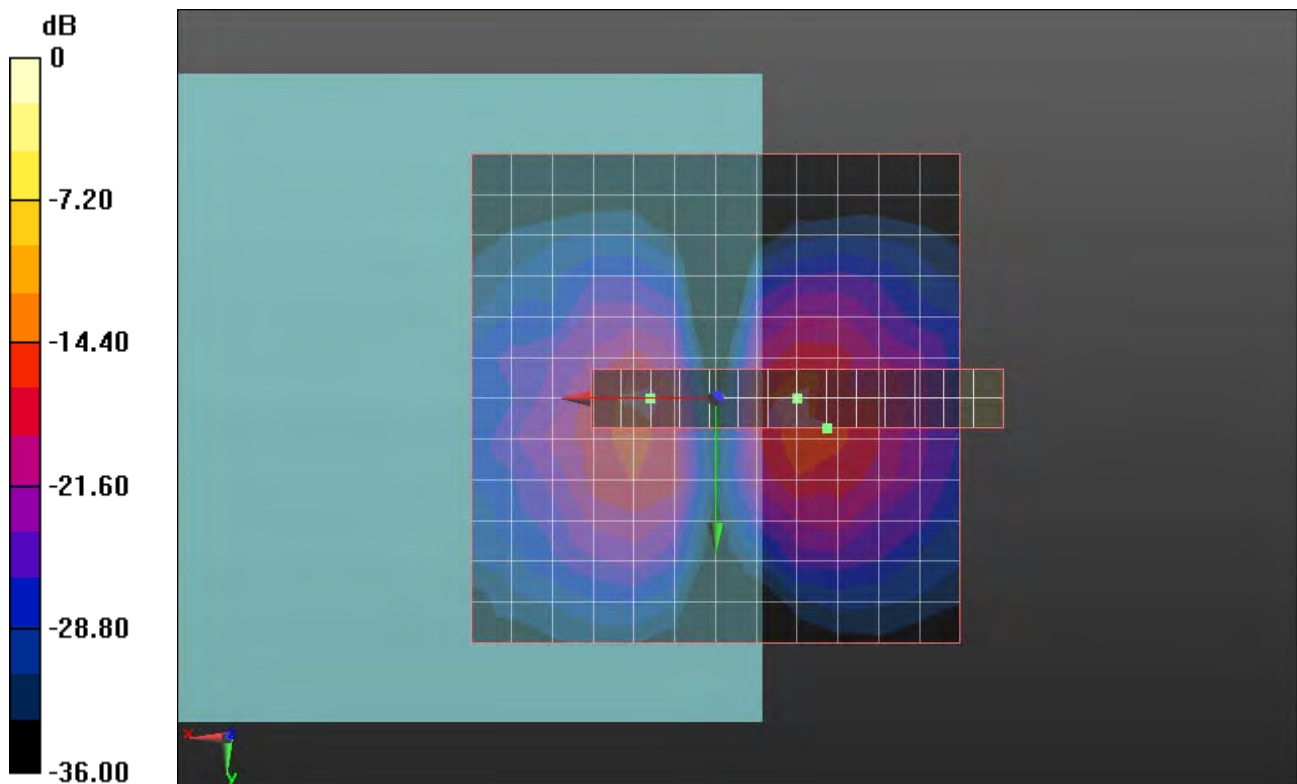
- Probe: AM1DV3 - 3067; ; Calibrated: 2011-12-8
- Electronics: DAE4 Sn1210; Calibrated: 2011-11-18
- Phantom: HAC Test Arch with AMCC; Type: SD HAC P01 BA;
- Measurement SW: DASY52, Version 52.8 (0); SEMCAD X Version 14.4.5 (3634)

**Ch600/x (longitudinal) fine 3mm 42 x 6/ABM [HAC-2007] SNR(x,y,z) (15x3x1):**

ABM1/ABM2 = 29.75 dB

ABM1 comp = -15.57 dB A/m

Location: -11.3, 3, 3.7 mm



0 dB = 1.000A/m

**#05 HAC T-Coil\_CDMA BC1\_RC1 SO3\_Ch600(Y)**

**DUT: 230902**

Communication System: CDMA2000; Frequency: 1880 MHz; Duty Cycle: 1:1

Medium: Air Medium parameters used:  $\sigma = 0$  mho/m,  $\epsilon_r = 1$ ;  $\rho = 0$  kg/m<sup>3</sup>

Ambient Temperature : 23.6 °C

DASY5 Configuration:

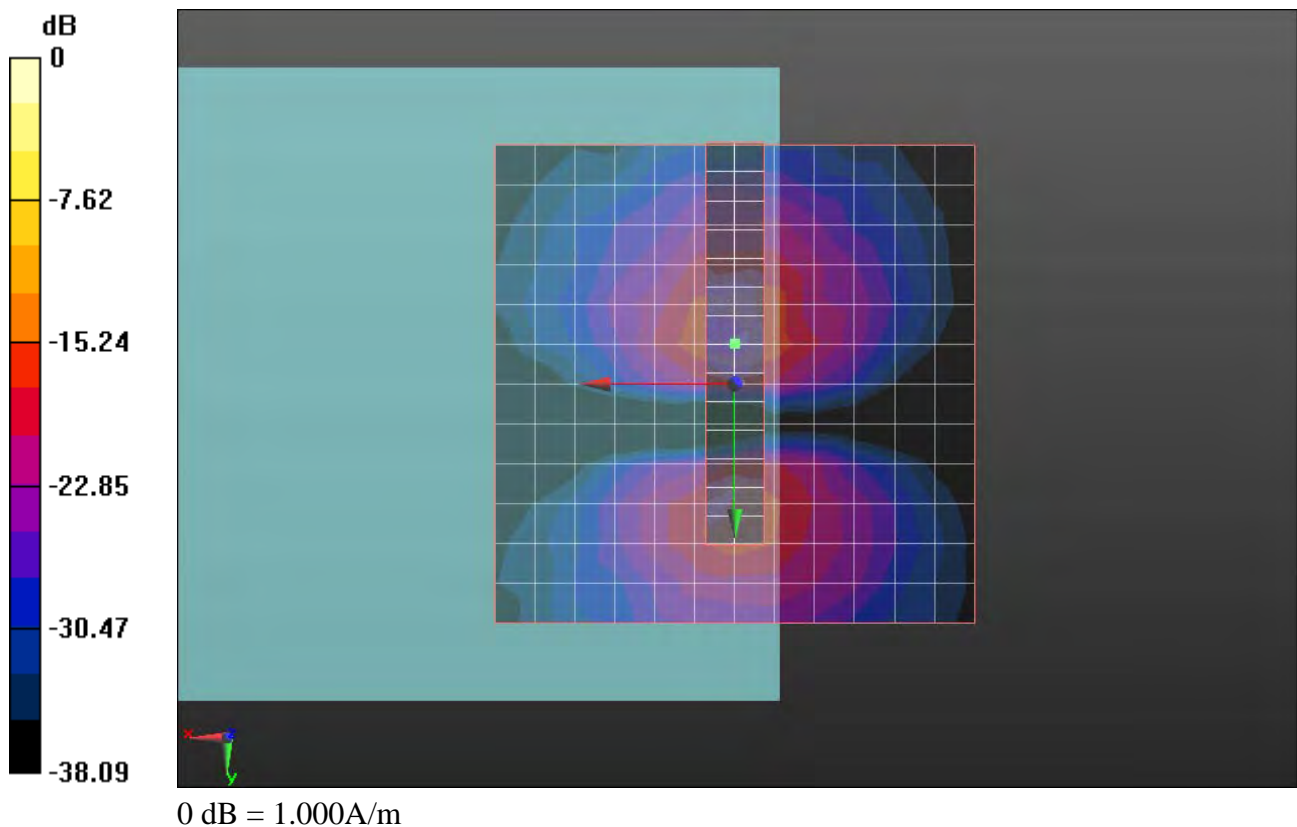
- Probe: AM1DV3 - 3067; ; Calibrated: 2011-12-8
- Electronics: DAE4 Sn1210; Calibrated: 2011-11-18
- Phantom: HAC Test Arch with AMCC; Type: SD HAC P01 BA;
- Measurement SW: DASY52, Version 52.8 (0); SEMCAD X Version 14.4.5 (3634)

**Ch600/y (transversal) fine 3mm 6 x 42/ABM [HAC-2007] SNR(x,y,z) (3x15x1):**

ABM1/ABM2 = 26.23 dB

ABM1 comp = -14.63 dB A/m

Location: 0, -4.2, 3.7 mm



**#06 HAC T-Coil\_CDMA BC1\_RC1 SO3\_Ch1175(Z)**

**DUT: 230902**

Communication System: CDMA2000; Frequency: 1908.75 MHz; Duty Cycle: 1:1

Medium: Air Medium parameters used:  $\sigma = 0$  mho/m,  $\epsilon_r = 1$ ;  $\rho = 0$  kg/m<sup>3</sup>

Ambient Temperature : 23.6 °C

DASY5 Configuration:

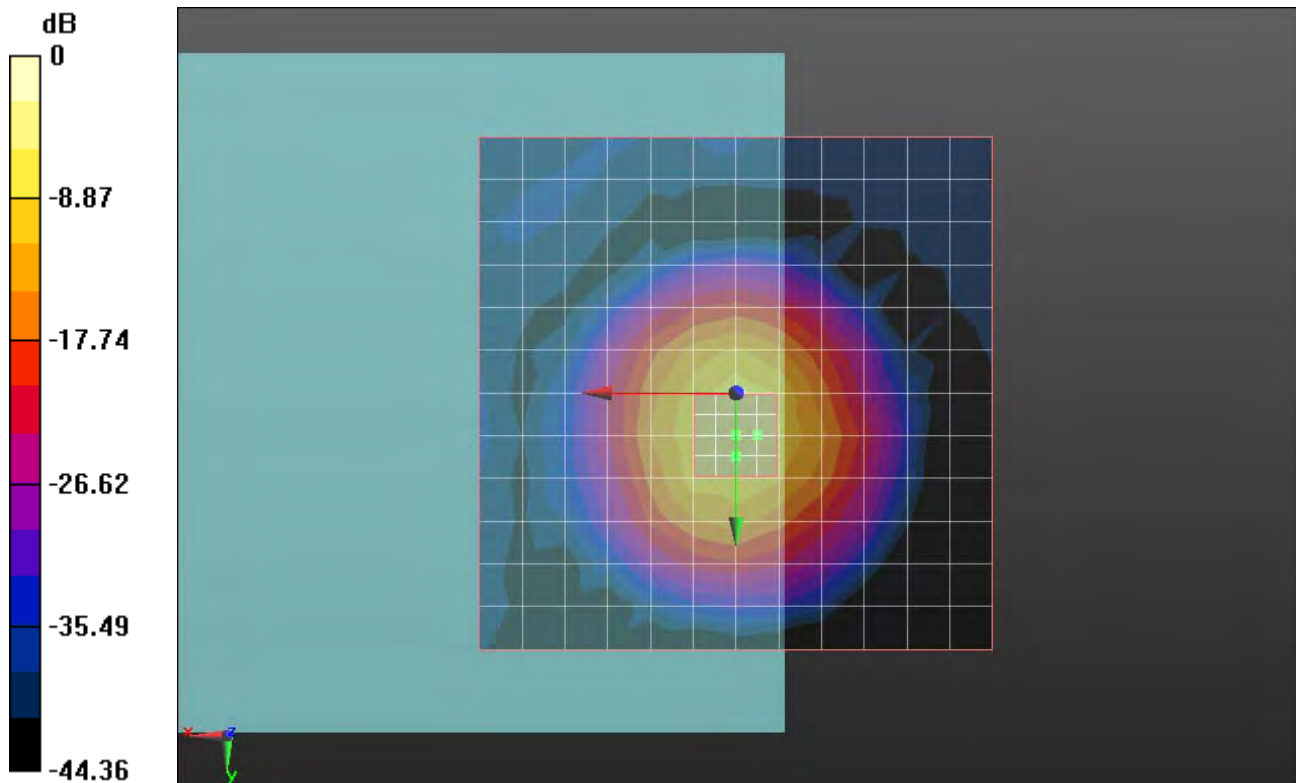
- Probe: AM1DV3 - 3067; ; Calibrated: 2011-12-8
- Electronics: DAE4 Sn1210; Calibrated: 2011-11-18
- Phantom: HAC Test Arch with AMCC; Type: SD HAC P01 BA;
- Measurement SW: DASY52, Version 52.8 (0); SEMCAD X Version 14.4.5 (3634)

**Ch1175/z (axial) fine 2mm 8 x 8/ABM [HAC-2007] SNR(x,y,z) (5x5x1):**

ABM1/ABM2 = 31.01 dB

ABM1 comp = -7.15 dB A/m

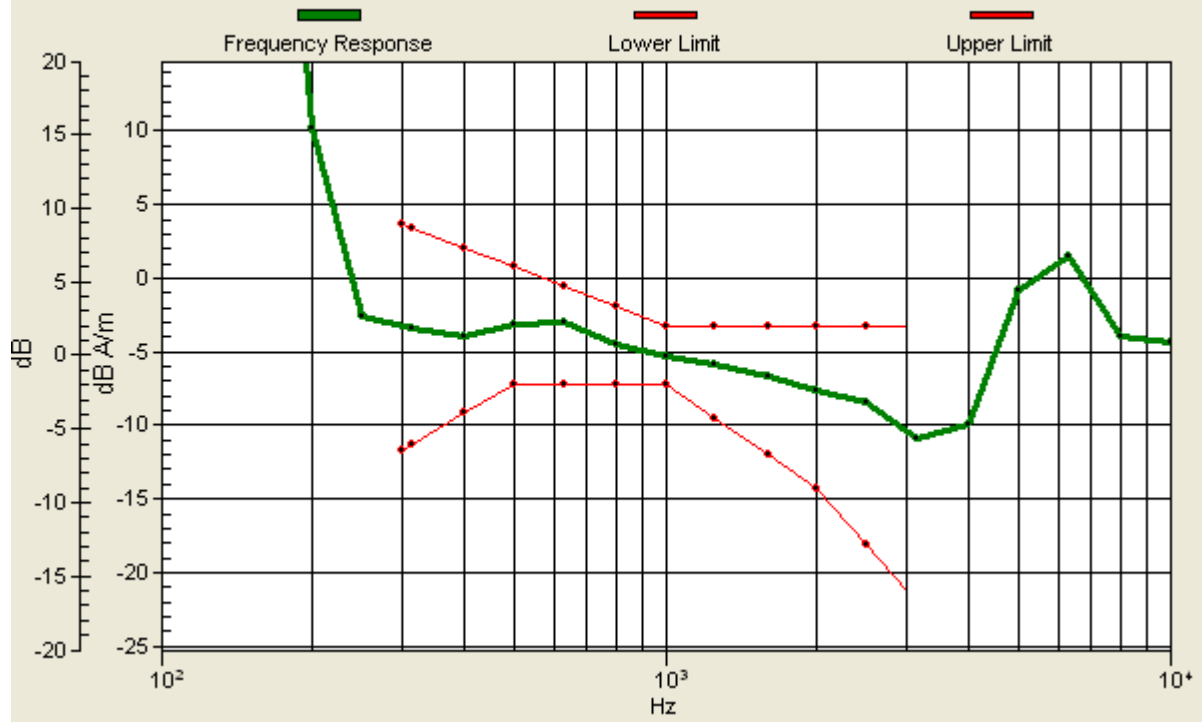
Location: 0, 6.2, 3.7 mm



0 dB = 1.000A/m

# Ch1175/z (axial) wideband at best S/N/ABM [HAC-2007] Freq Resp(x,y,z,f)

Loc: 0, 6.2, 3.7 mm Diff: 2dB



**#06 HAC T-Coil\_CDMA BC1\_RC1 SO3\_Ch1175(X)**

**DUT: 230902**

Communication System: CDMA2000; Frequency: 1908.75 MHz; Duty Cycle: 1:1

Medium: Air Medium parameters used:  $\sigma = 0$  mho/m,  $\epsilon_r = 1$ ;  $\rho = 0$  kg/m<sup>3</sup>

Ambient Temperature : 23.6 °C

DASY5 Configuration:

- Probe: AM1DV3 - 3067; ; Calibrated: 2011-12-8
- Electronics: DAE4 Sn1210; Calibrated: 2011-11-18
- Phantom: HAC Test Arch with AMCC; Type: SD HAC P01 BA;
- Measurement SW: DASY52, Version 52.8 (0); SEMCAD X Version 14.4.5 (3634)

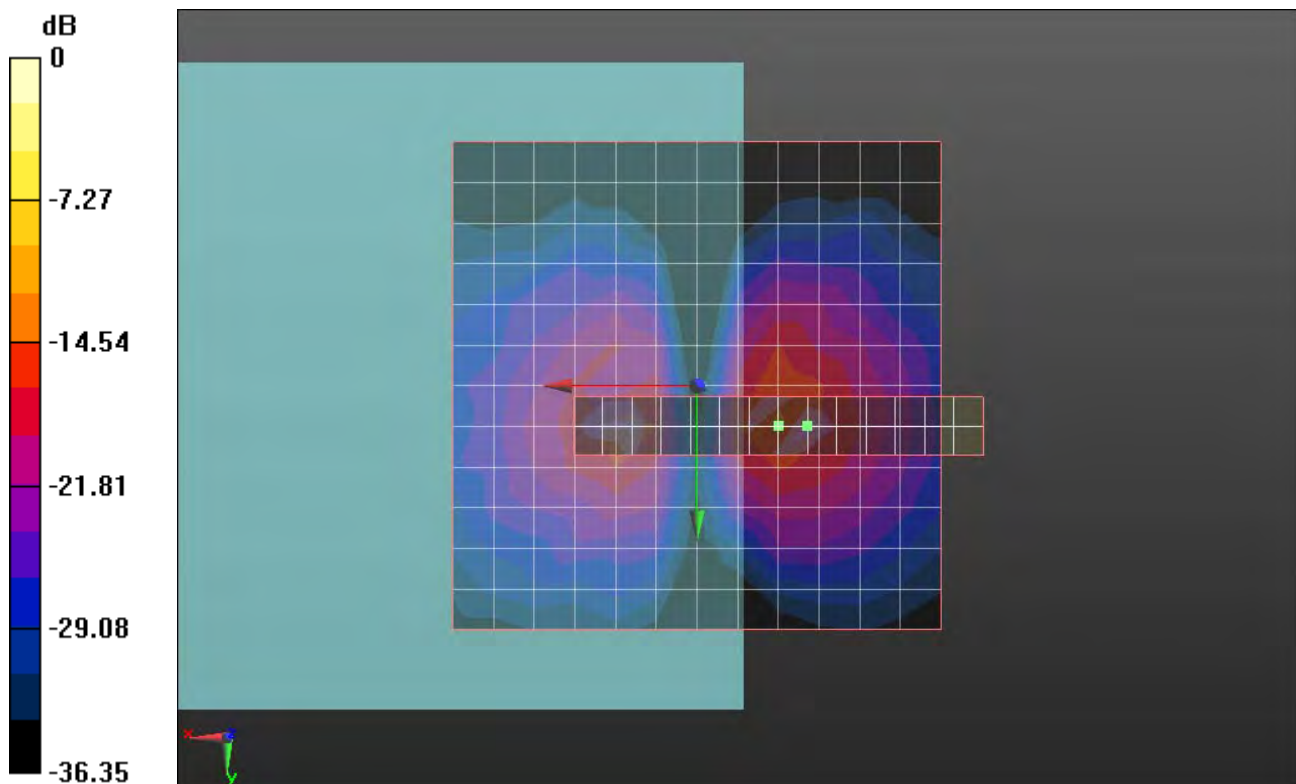
**Ch1175/x (longitudinal) fine 3mm 42 x 6/ABM [HAC-2007] SNR(x,y,z) (15x3x1):**

ABM1/ABM2 = 29.43 dB

ABM1 comp = -14.62 dB A/m

BWC Factor = 0.16 dB

Location: -11.3, 4.2, 3.7 mm



0 dB = 1.000A/m



#06 HAC T-Coil\_CDMA BC1\_RC1 SO3\_Ch1175(Y)

DUT: 230902

Communication System: CDMA2000; Frequency: 1908.75 MHz; Duty Cycle: 1:1

Medium: Air Medium parameters used:  $\sigma = 0$  mho/m,  $\epsilon_r = 1$ ;  $\rho = 0$  kg/m<sup>3</sup>

Ambient Temperature : 23.6 °C

DASY5 Configuration:

- Probe: AM1DV3 - 3067; ; Calibrated: 2011-12-8
- Electronics: DAE4 Sn1210; Calibrated: 2011-11-18
- Phantom: HAC Test Arch with AMCC; Type: SD HAC P01 BA;
- Measurement SW: DASY52, Version 52.8 (0); SEMCAD X Version 14.4.5 (3634)

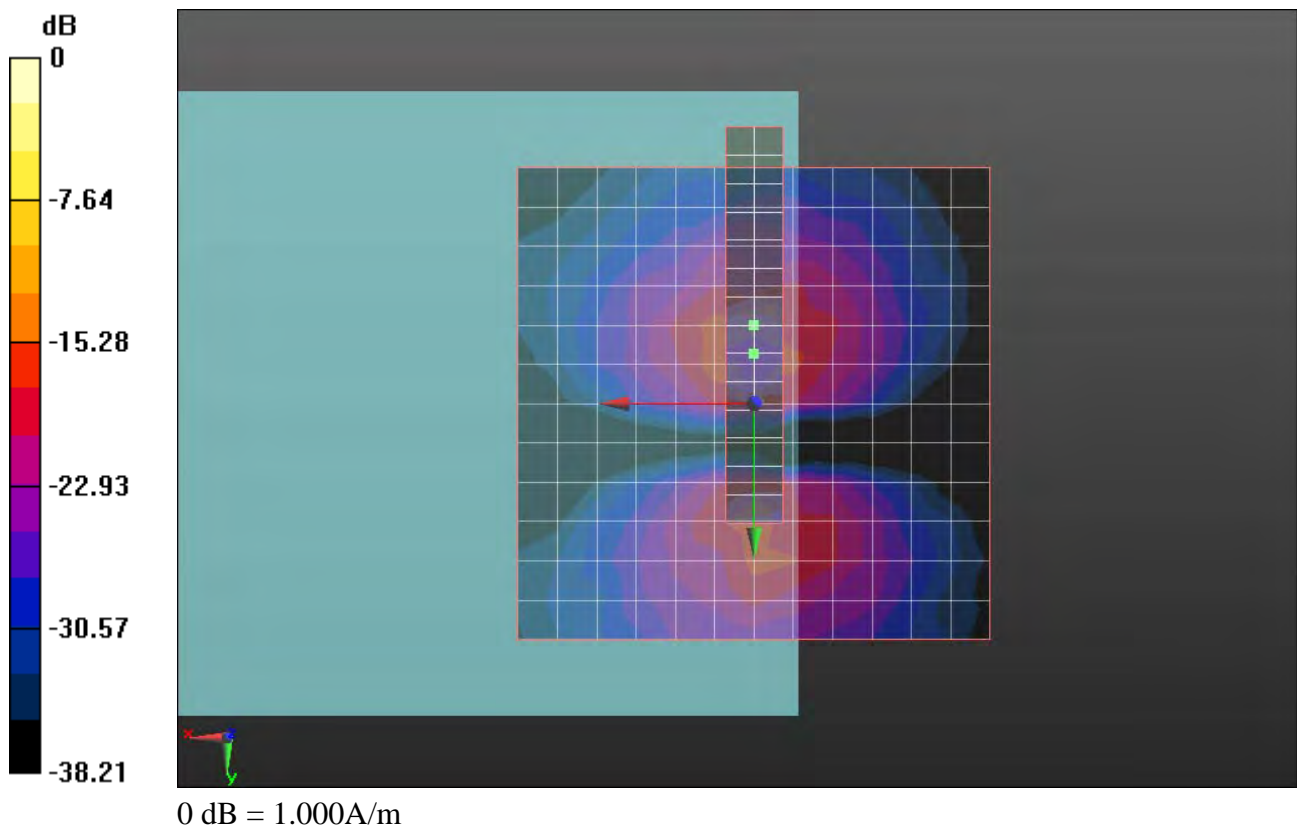
Ch1175/y (transversal) fine 3mm 6 x 42/ABM [HAC-2007] SNR(x,y,z) (3x15x1):

ABM1/ABM2 = 25.84 dB

ABM1 comp = -15.11 dB A/m

BWC Factor = 0.16 dB

Location: 0, -5.3, 3.7 mm



**#07 HAC T-Coil\_CDMA BC15\_RC1 SO3\_Ch25(Z)**

**DUT: 230902**

Communication System: CDMA2000; Frequency: 1711.25 MHz; Duty Cycle: 1:1

Medium: Air Medium parameters used:  $\sigma = 0$  mho/m,  $\epsilon_r = 1$ ;  $\rho = 0$  kg/m<sup>3</sup>

Ambient Temperature : 23.6 °C

DASY5 Configuration:

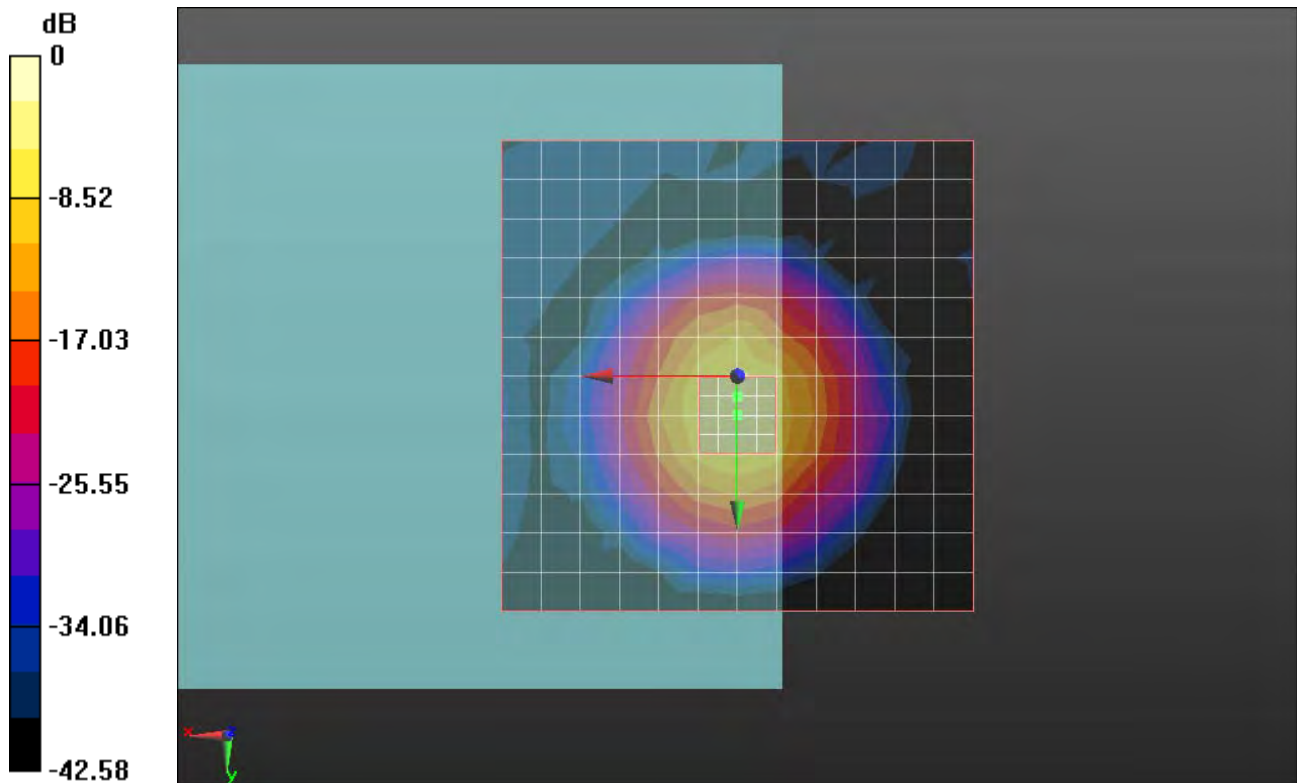
- Probe: AM1DV3 - 3067; ; Calibrated: 2011-12-8
- Electronics: DAE4 Sn1210; Calibrated: 2011-11-18
- Phantom: HAC Test Arch with AMCC; Type: SD HAC P01 BA;
- Measurement SW: DASY52, Version 52.8 (0); SEMCAD X Version 14.4.5 (3634)

**Ch25/z (axial) fine 2mm 8 x 8/ABM [HAC-2007] SNR(x,y,z) (5x5x1):**

ABM1/ABM2 = 30.96 dB

ABM1 comp = -6.34 dB A/m

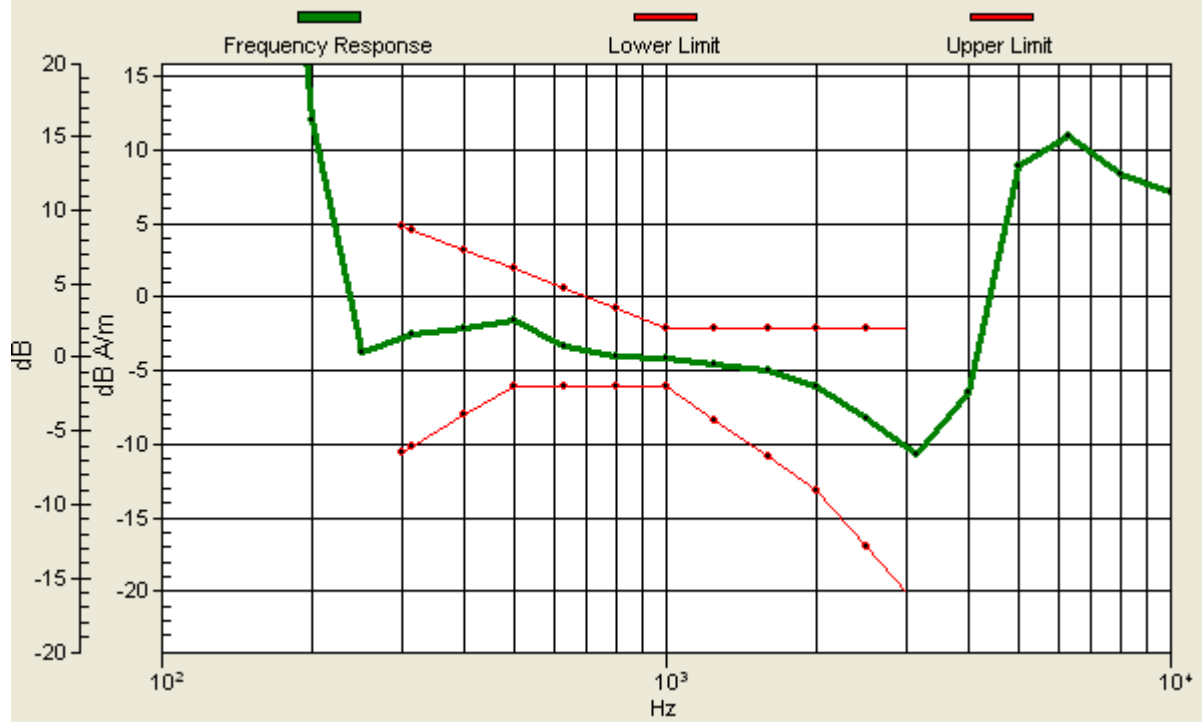
Location: 0, 2.2, 3.7 mm



0 dB = 1.000A/m

# Ch25/z (axial) wideband at best S/N/ABM [HAC-2007] Freq Resp(x,y,z,f)

Loc: 0, 2.2, 3.7 mm Diff: 2dB



**#07 HAC T-Coil\_CDMA BC15\_RC1 SO3\_Ch25(X)**

**DUT: 230902**

Communication System: CDMA2000; Frequency: 1711.25 MHz; Duty Cycle: 1:1

Medium: Air Medium parameters used:  $\sigma = 0$  mho/m,  $\epsilon_r = 1$ ;  $\rho = 0$  kg/m<sup>3</sup>

Ambient Temperature : 23.6 °C

DASY5 Configuration:

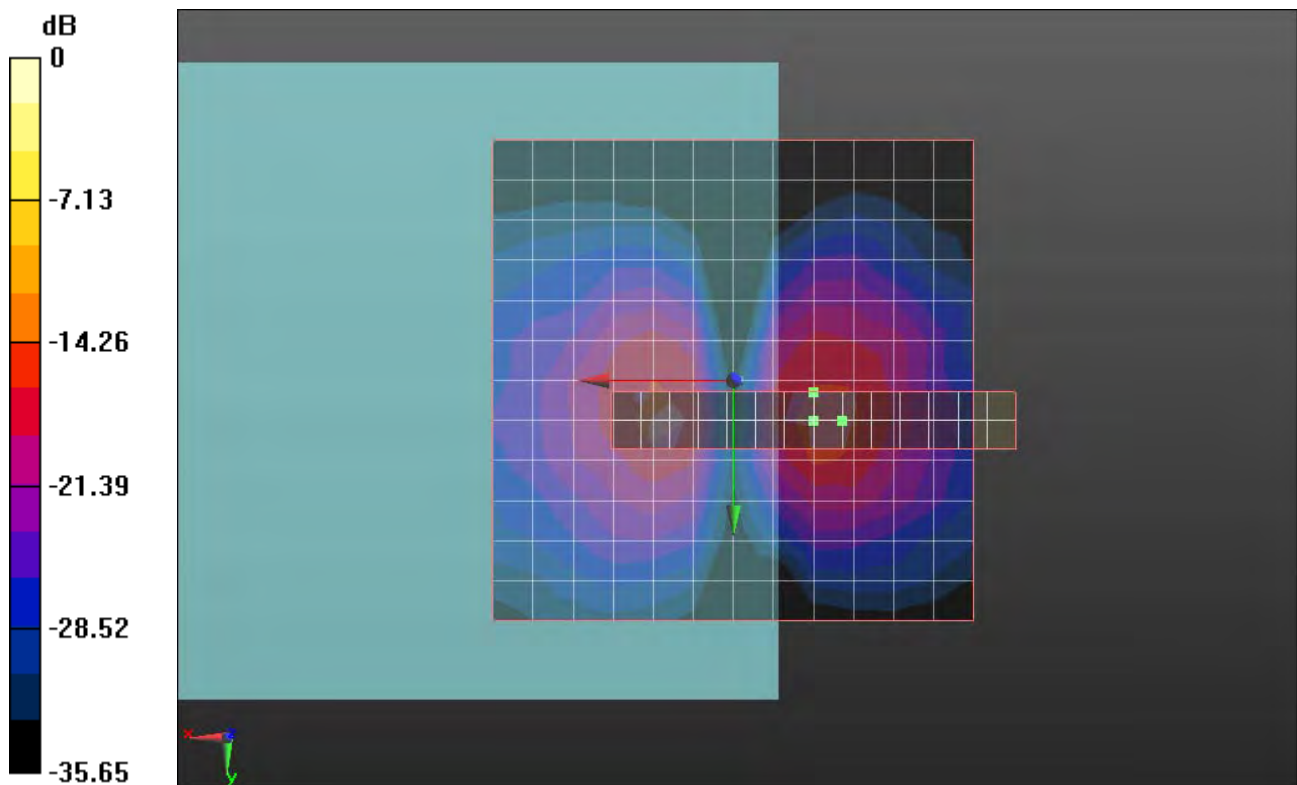
- Probe: AM1DV3 - 3067; ; Calibrated: 2011-12-8
- Electronics: DAE4 Sn1210; Calibrated: 2011-11-18
- Phantom: HAC Test Arch with AMCC; Type: SD HAC P01 BA;
- Measurement SW: DASY52, Version 52.8 (0); SEMCAD X Version 14.4.5 (3634)

**Ch25/x (longitudinal) fine 3mm 42 x 6/ABM [HAC-2007] SNR(x,y,z) (15x3x1):**

ABM1/ABM2 = 28.03 dB

ABM1 comp = -15.02 dB A/m

Location: -11.3, 4.2, 3.7 mm



0 dB = 1.000A/m

**#07 HAC T-Coil\_CDMA BC15\_RC1 SO3\_Ch25(Y)**

**DUT: 230902**

Communication System: CDMA2000; Frequency: 1711.25 MHz; Duty Cycle: 1:1

Medium: Air Medium parameters used:  $\sigma = 0$  mho/m,  $\epsilon_r = 1$ ;  $\rho = 0$  kg/m<sup>3</sup>

Ambient Temperature : 23.6 °C

DASY5 Configuration:

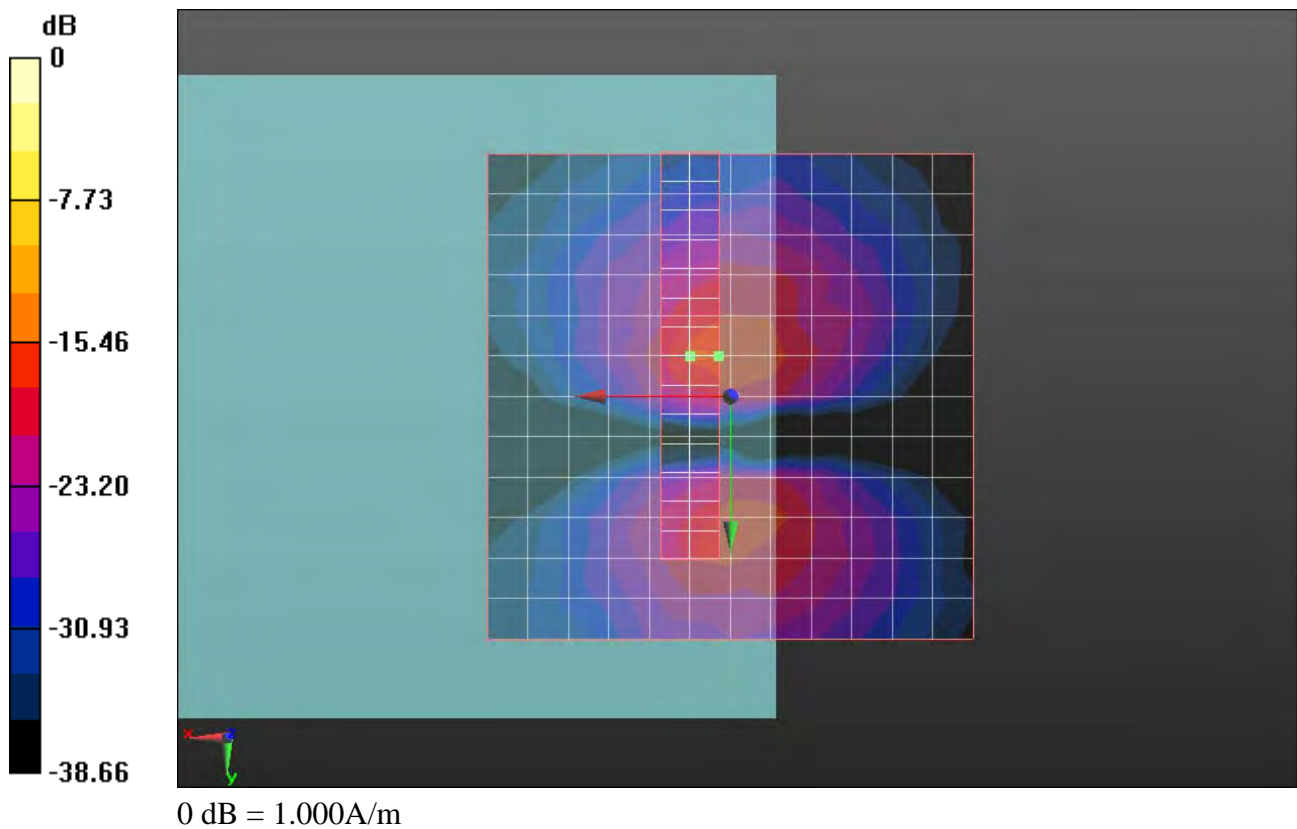
- Probe: AM1DV3 - 3067; ; Calibrated: 2011-12-8
- Electronics: DAE4 Sn1210; Calibrated: 2011-11-18
- Phantom: HAC Test Arch with AMCC; Type: SD HAC P01 BA;
- Measurement SW: DASY52, Version 52.8 (0); SEMCAD X Version 14.4.5 (3634)

**Ch25/y (transversal) fine 3mm 6 x 42/ABM [HAC-2007] SNR(x,y,z) (3x15x1):**

ABM1/ABM2 = 25.78 dB

ABM1 comp = -15.23 dB A/m

Location: 1.2, -4.2, 3.7 mm



**#08 HAC T-Coil\_CDMA BC15\_RC1 SO3\_Ch425(Z)**

**DUT: 230902**

Communication System: CDMA2000; Frequency: 1731.25 MHz; Duty Cycle: 1:1

Medium: Air Medium parameters used:  $\sigma = 0$  mho/m,  $\epsilon_r = 1$ ;  $\rho = 0$  kg/m<sup>3</sup>

Ambient Temperature : 23.6 °C

DASY5 Configuration:

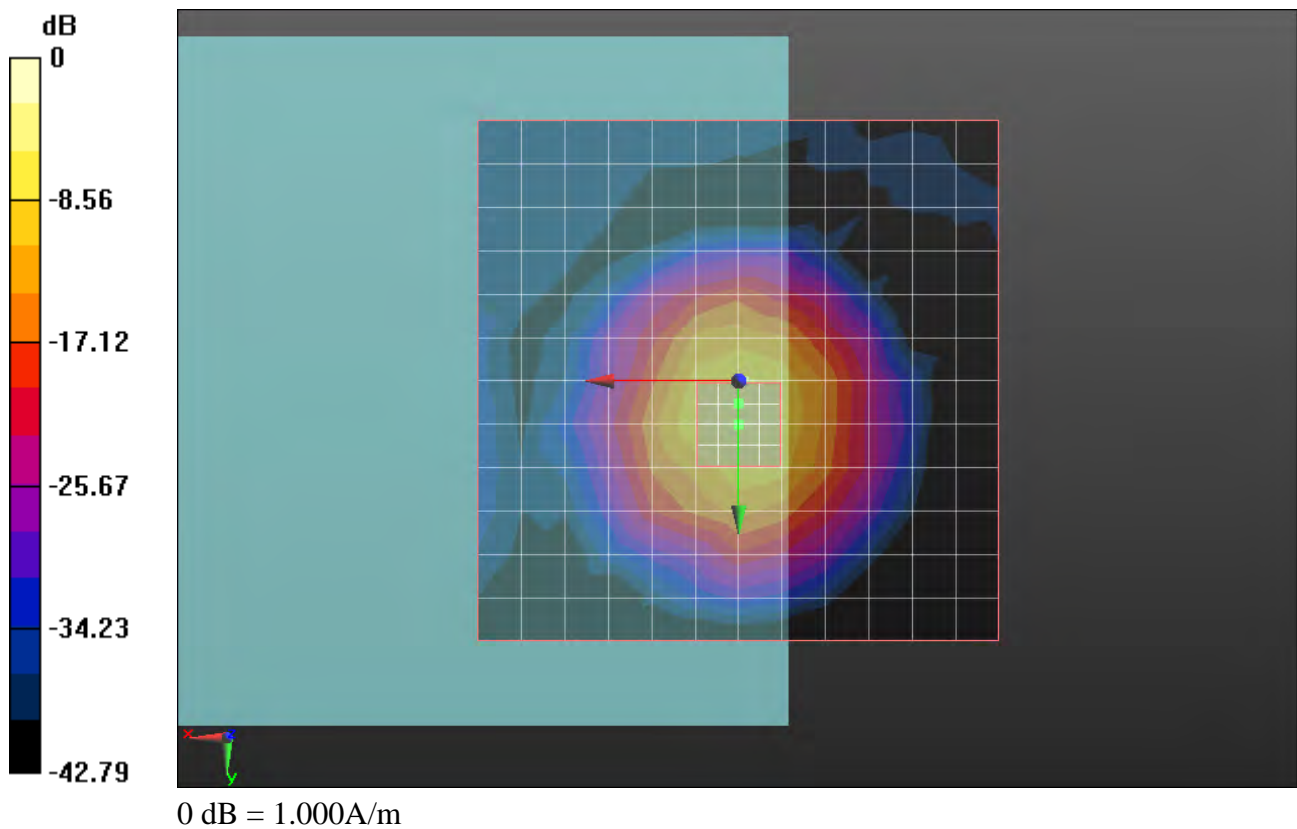
- Probe: AM1DV3 - 3067; ; Calibrated: 2011-12-8
- Electronics: DAE4 Sn1210; Calibrated: 2011-11-18
- Phantom: HAC Test Arch with AMCC; Type: SD HAC P01 BA;
- Measurement SW: DASY52, Version 52.8 (0); SEMCAD X Version 14.4.5 (3634)

**Ch425/z (axial) fine 2mm 8 x 8/ABM [HAC-2007] SNR(x,y,z) (5x5x1):**

ABM1/ABM2 = 30.25 dB

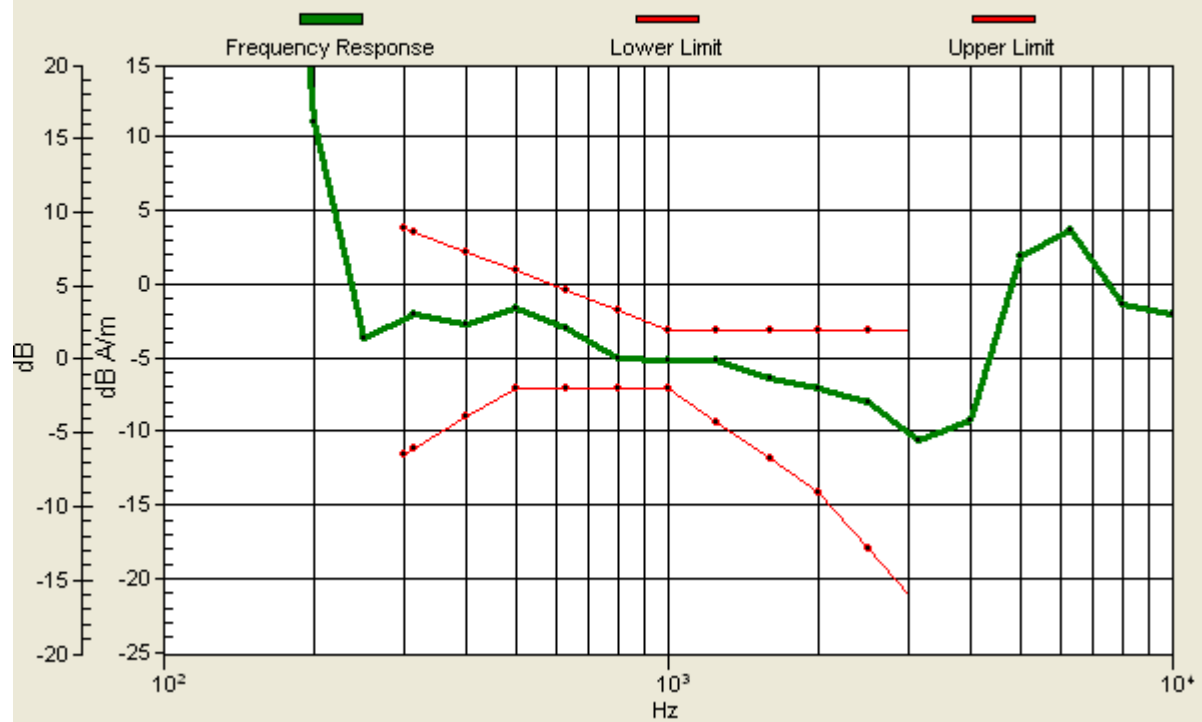
ABM1 comp = -6.31 dB A/m

Location: 0, 2.2, 3.7 mm



# Ch425/z (axial) wideband at best S/N/ABM [HAC-2007] Freq Resp(x,y,z,f)

Loc: 0, 2.2, 3.7 mm Diff: 2dB



**#08 HAC T-Coil\_CDMA BC15\_RC1 SO3\_Ch425(X)**

**DUT: 230902**

Communication System: CDMA2000; Frequency: 1731.25 MHz; Duty Cycle: 1:1

Medium: Air Medium parameters used:  $\sigma = 0$  mho/m,  $\epsilon_r = 1$ ;  $\rho = 0$  kg/m<sup>3</sup>

Ambient Temperature : 23.6 °C

DASY5 Configuration:

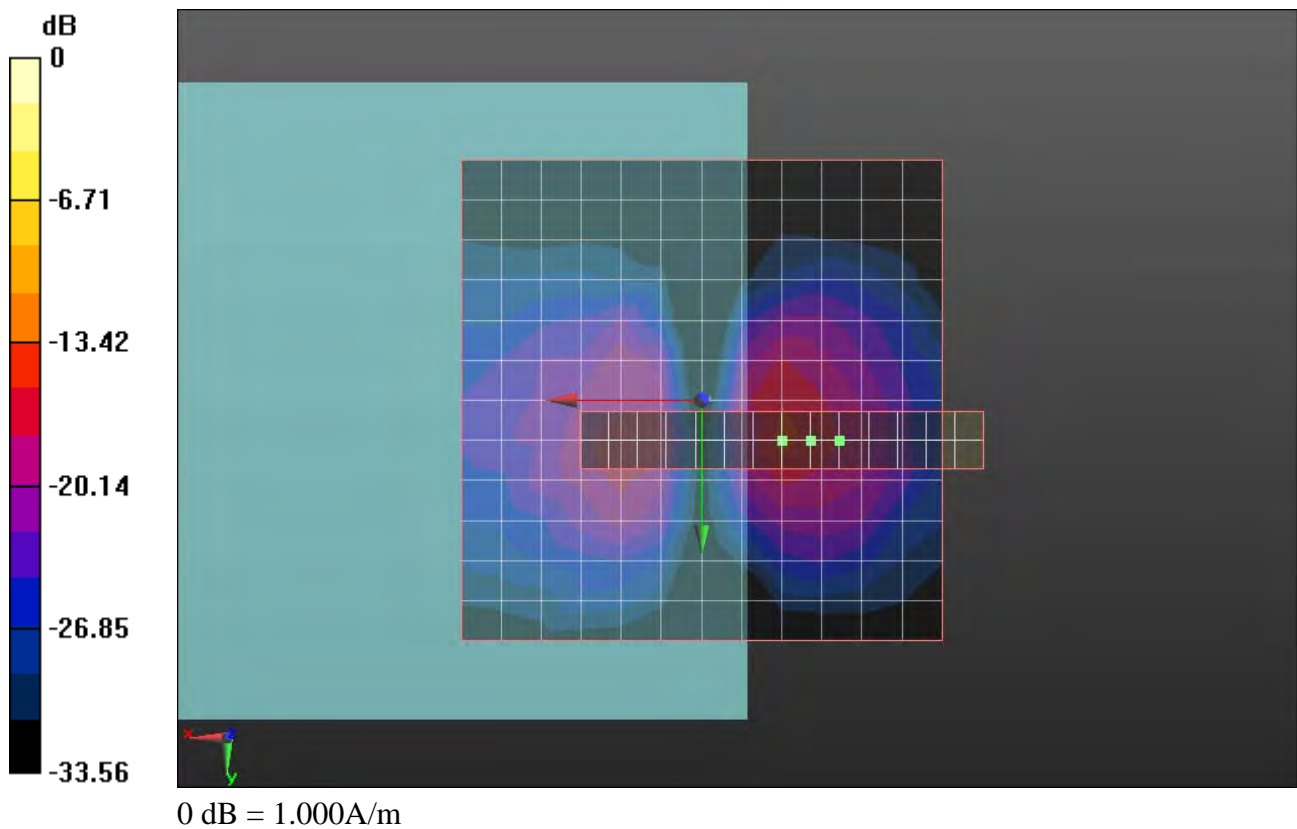
- Probe: AM1DV3 - 3067; ; Calibrated: 2011-12-8
- Electronics: DAE4 Sn1210; Calibrated: 2011-11-18
- Phantom: HAC Test Arch with AMCC; Type: SD HAC P01 BA;
- Measurement SW: DASY52, Version 52.8 (0); SEMCAD X Version 14.4.5 (3634)

**Ch425/x (longitudinal) fine 3mm 42 x 6/ABM [HAC-2007] SNR(x,y,z) (15x3x1):**

ABM1/ABM2 = 26.52 dB

ABM1 comp = -16.22 dB A/m

Location: -14.3, 4.2, 3.7 mm





#08 HAC T-Coil\_CDMA BC15\_RC1 SO3\_Ch425(Y)

DUT: 230902

Communication System: CDMA2000; Frequency: 1731.25 MHz; Duty Cycle: 1:1

Medium: Air Medium parameters used:  $\sigma = 0$  mho/m,  $\epsilon_r = 1$ ;  $\rho = 0$  kg/m<sup>3</sup>

Ambient Temperature : 23.6 °C

DASY5 Configuration:

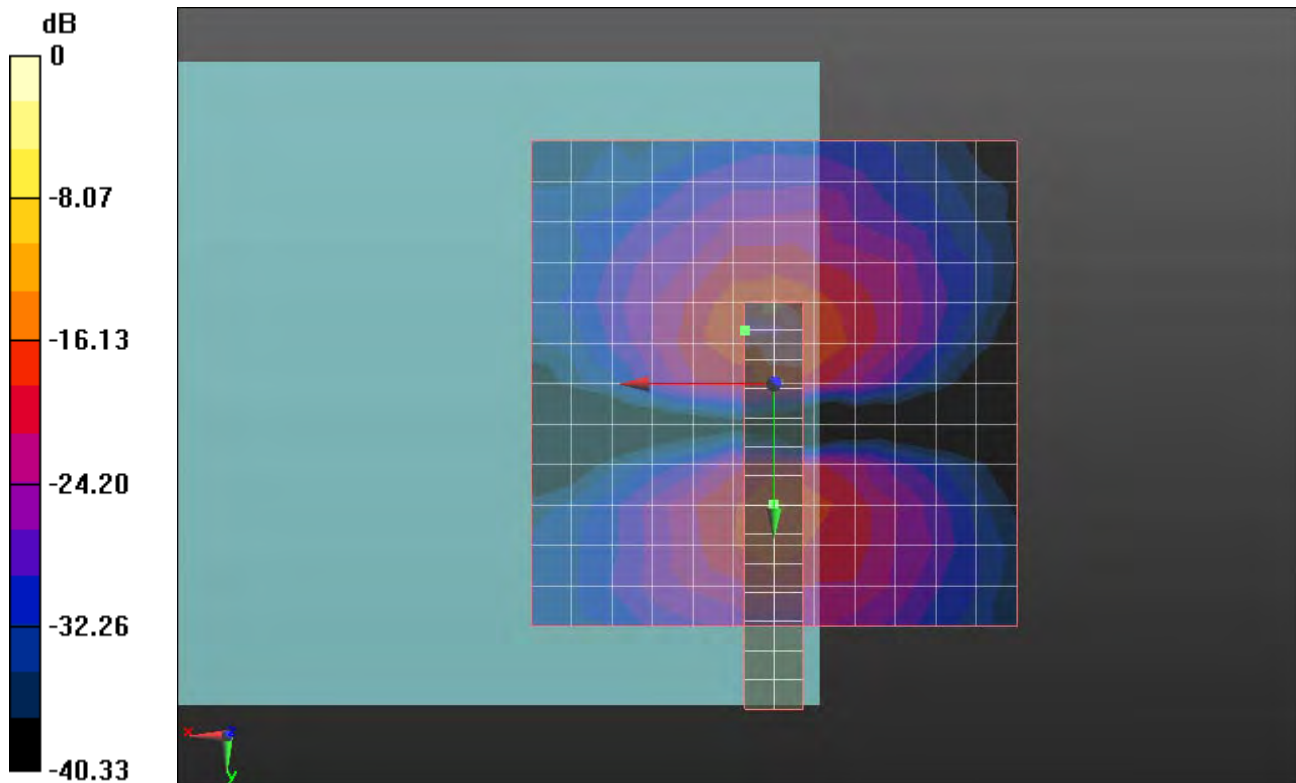
- Probe: AM1DV3 - 3067; ; Calibrated: 2011-12-8
- Electronics: DAE4 Sn1210; Calibrated: 2011-11-18
- Phantom: HAC Test Arch with AMCC; Type: SD HAC P01 BA;
- Measurement SW: DASY52, Version 52.8 (0); SEMCAD X Version 14.4.5 (3634)

Ch425/y (transversal) fine 3mm 6 x 42/ABM [HAC-2007] SNR(x,y,z) (3x15x1):

ABM1/ABM2 = 26.11 dB

ABM1 comp = -14.70 dB A/m

Location: 3, -5.5, 3.7 mm



0 dB = 1.000A/m

**#09 HAC T-Coil\_CDMA BC15\_RC1 SO3\_Ch875(Z)**

**DUT: 230902**

Communication System: CDMA2000; Frequency: 1753.75 MHz; Duty Cycle: 1:1

Medium: Air Medium parameters used:  $\sigma = 0$  mho/m,  $\epsilon_r = 1$ ;  $\rho = 0$  kg/m<sup>3</sup>

Ambient Temperature : 23.6 °C

DASY5 Configuration:

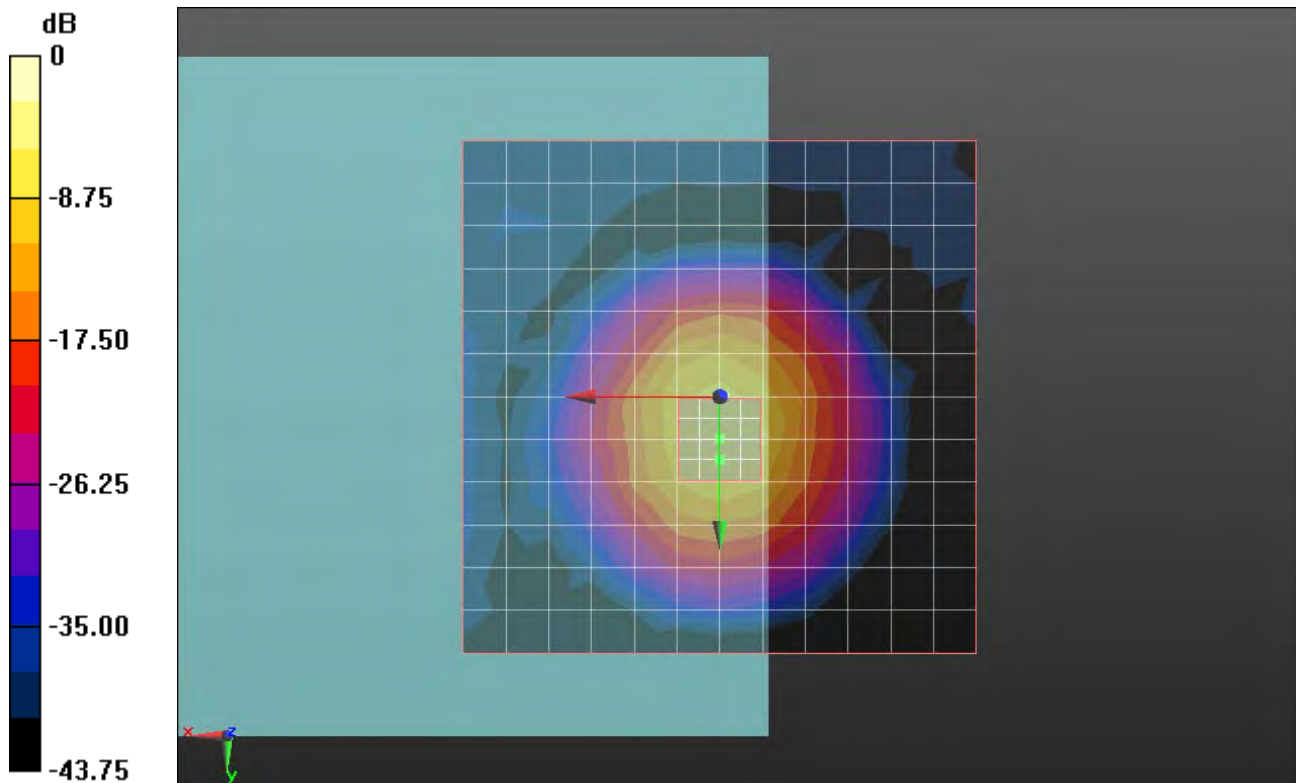
- Probe: AM1DV3 - 3067; ; Calibrated: 2011-12-8
- Electronics: DAE4 Sn1210; Calibrated: 2011-11-18
- Phantom: HAC Test Arch with AMCC; Type: SD HAC P01 BA;
- Measurement SW: DASY52, Version 52.8 (0); SEMCAD X Version 14.4.5 (3634)

**Ch875/z (axial) fine 2mm 8 x 8/ABM [HAC-2007] SNR(x,y,z) (5x5x1):**

ABM1/ABM2 = 31.73 dB

ABM1 comp = -6.89 dB A/m

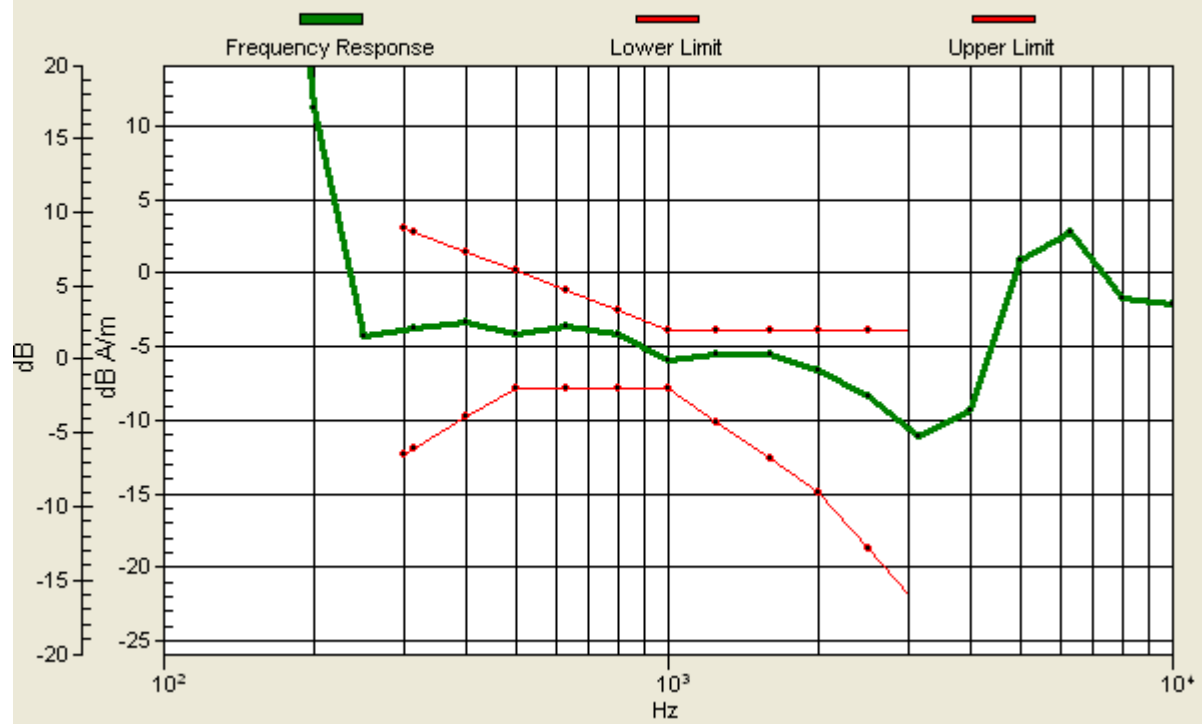
Location: 0, 6.2, 3.7 mm



0 dB = 1.000A/m

# Ch875/z (axial) wideband at best S/N/ABM [HAC-2007] Freq Resp(x,y,z,f)

Loc: 0, 6.2, 3.7 mm Diff: 1.6dB



**#09 HAC T-Coil\_CDMA BC15\_RC1 SO3\_Ch875(X)**

**DUT: 230902**

Communication System: CDMA2000; Frequency: 1753.75 MHz; Duty Cycle: 1:1

Medium: Air Medium parameters used:  $\sigma = 0$  mho/m,  $\epsilon_r = 1$ ;  $\rho = 0$  kg/m<sup>3</sup>

Ambient Temperature : 23.6 °C

DASY5 Configuration:

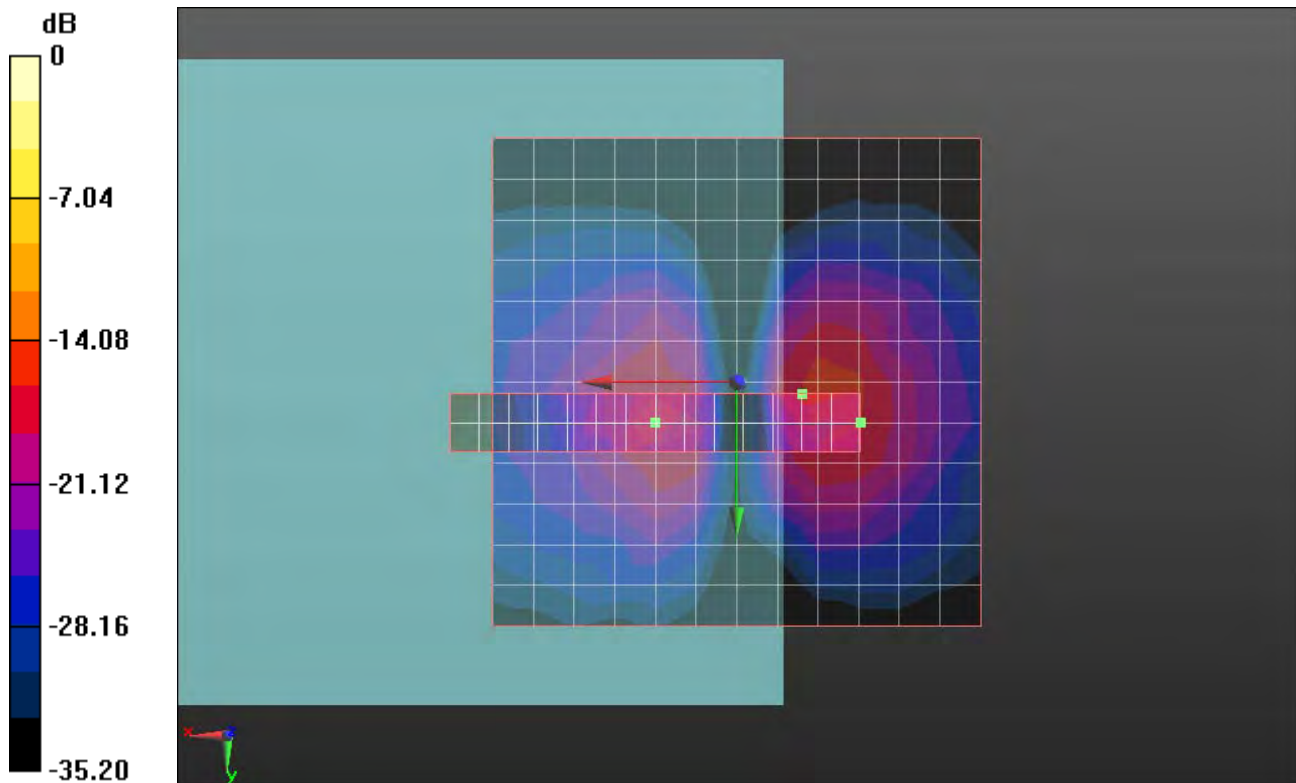
- Probe: AM1DV3 - 3067; ; Calibrated: 2011-12-8
- Electronics: DAE4 Sn1210; Calibrated: 2011-11-18
- Phantom: HAC Test Arch with AMCC; Type: SD HAC P01 BA;
- Measurement SW: DASY52, Version 52.8 (0); SEMCAD X Version 14.4.5 (3634)

**Ch875/x (longitudinal) fine 3mm 42 x 6/ABM [HAC-2007] SNR(x,y,z) (15x3x1):**

ABM1/ABM2 = 27.67 dB

ABM1 comp = -16.23 dB A/m

Location: -12.7, 4.2, 3.7 mm



0 dB = 1.000A/m

#09 HAC T-Coil\_CDMA BC15\_RC1 SO3\_Ch875(Y)

DUT: 230902

Communication System: CDMA2000; Frequency: 1753.75 MHz; Duty Cycle: 1:1

Medium: Air Medium parameters used:  $\sigma = 0$  mho/m,  $\epsilon_r = 1$ ;  $\rho = 0$  kg/m<sup>3</sup>

Ambient Temperature : 23.6 °C

DASY5 Configuration:

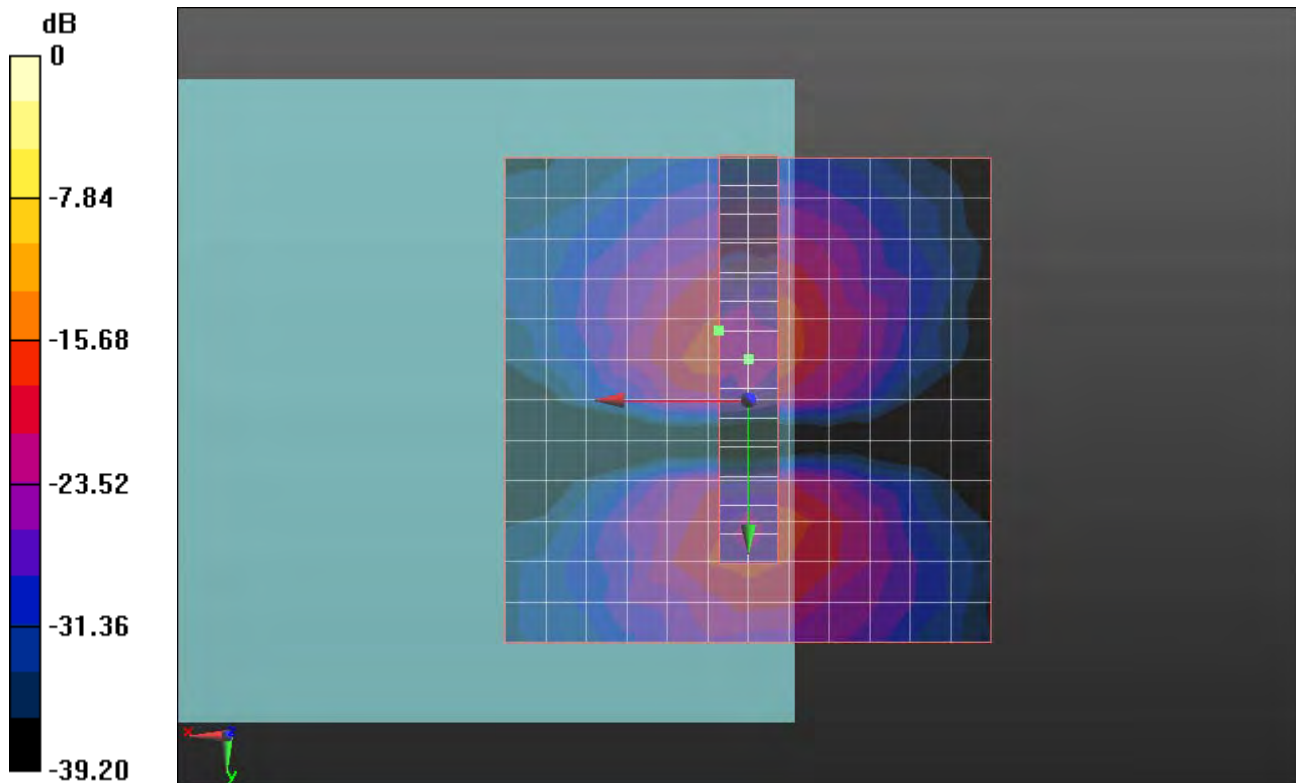
- Probe: AM1DV3 - 3067; ; Calibrated: 2011-12-8
- Electronics: DAE4 Sn1210; Calibrated: 2011-11-18
- Phantom: HAC Test Arch with AMCC; Type: SD HAC P01 BA;
- Measurement SW: DASY52, Version 52.8 (0); SEMCAD X Version 14.4.5 (3634)

Ch875/y (transversal) fine 3mm 6 x 42/ABM [HAC-2007] SNR(x,y,z) (3x15x1):

ABM1/ABM2 = 28.06 dB

ABM1 comp = -15.26 dB A/m

Location: 3, -7.2, 3.7 mm



0 dB = 1.000A/m



## **Appendix B. Calibration Data**

The DASy calibration certificates are shown as follows.



Accredited by the Swiss Accreditation Service (SAS)  
The Swiss Accreditation Service is one of the signatories to the EA  
Multilateral Agreement for the recognition of calibration certificates

Accreditation No.: **SCS 108**

Client **Auden**

Certificate No: **AM1DV3-3067\_Dec11**

**CALIBRATION CERTIFICATE**

Object **AM1DV3 - SN: 3067**

Calibration procedure(s) **QA CAL-24.v2  
Calibration procedure for AM1D magnetic field probes and TMFS in the audio range**

Calibration date: **December 08, 2011**

This calibration certificate documents the traceability to national standards, which realize the physical units of measurements (SI).  
The measurements and the uncertainties with confidence probability are given on the following pages and are part of the certificate.

All calibrations have been conducted in the closed laboratory facility: environment temperature (22 ± 3)°C and humidity < 70%.

Calibration Equipment used (M&TE critical for calibration)

Primary Standards	ID #	Cal Date (Certificate No.)	Scheduled Calibration
Keithley Multimeter Type 2001	SN: 0810278	28-Sep-11 (No:11450)	Sep-12
Reference Probe AM1DV3	SN: 3000	17-Aug-11 (No. AM1D-3000_Aug11)	Aug-12
DAE4	SN: 781	20-Apr-11 (No. DAE4-781_Apr11)	Apr-12

Secondary Standards	ID #	Check Date (in house)	Scheduled Check
AMCC	1050	12-Oct-11 (in house check Oct-11)	Oct-13

	Name	Function	Signature
Calibrated by:	Dimce Iliev	Laboratory Technician	<i>D. Iliev</i>
Approved by:	Fin Bornholt	R&D Director	<i>F. Bornholt</i>

Issued: December 8, 2011

This calibration certificate shall not be reproduced except in full without written approval of the laboratory.

## References

- [1] ANSI C63.19-2007  
American National Standard for Methods of Measurement of Compatibility between Wireless Communications Devices and Hearing Aids.
- [2] DASY5 manual, Chapter: Hearing Aid Compatibility (HAC) T-Coil Extension

## Description of the AM1D probe

The AM1D Audio Magnetic Field Probe is a fully shielded magnetic field probe for the frequency range from 100 Hz to 20 kHz. The pickup coil is compliant with the dimensional requirements of [1]. The probe includes a symmetric low noise amplifier for the signal available at the shielded 3 pin connector at the side. Power is supplied via the same connector (phantom power supply) and monitored via the LED near the connector. The 7 pin connector at the end of the probe does not carry any signals, but determines the angle of the sensor when mounted on the DAE. The probe supports mechanical detection of the surface.

The single sensor in the probe is arranged in a tilt angle allowing measurement of 3 orthogonal field components when rotating the probe by 120° around its axis. It is aligned with the perpendicular component of the field, if the probe axis is tilted nominally 35.3° above the measurement plane, using the connector rotation and sensor angle stated below.

The probe is fully RF shielded when operated with the matching signal cable (shielded) and allows measurement of audio magnetic fields in the close vicinity of RF emitting wireless devices according to [1] without additional shielding.

## Handling of the item

The probe is manufactured from stainless steel. In order to maintain the performance and calibration of the probe, it must not be opened. The probe is designed for operation in air and shall not be exposed to humidity or liquids. For proper operation of the surface detection and emergency stop functions in a DASY system, the probe must be operated with the special probe cup provided (larger diameter).

## Methods Applied and Interpretation of Parameters

- *Coordinate System:* The AM1D probe is mounted in the DASY system for operation with a HAC Test Arch phantom with AMCC Helmholtz calibration coil according to [2], with the tip pointing to “southwest” orientation.
- *Functional Test:* The functional test preceding calibration includes test of Noise level  
RF immunity (1kHz AM modulated signal). The shield of the probe cable must be well connected.  
Frequency response verification from 100 Hz to 10 kHz.
- *Connector Rotation:* The connector at the end of the probe does not carry any signals and is used for fixation to the DAE only. The probe is operated in the center of the AMCC Helmholtz coil using a 1 kHz magnetic field signal. Its angle is determined from the two minima at nominally +120° and –120° rotation, so the sensor in the tip of the probe is aligned to the vertical plane in z-direction, corresponding to the field maximum in the AMCC Helmholtz calibration coil.
- *Sensor Angle:* The sensor tilting in the vertical plane from the ideal vertical direction is determined from the two minima at nominally +120° and –120°. DASY system uses this angle to align the sensor for radial measurements to the x and y axis in the horizontal plane.
- *Sensitivity:* With the probe sensor aligned to the z-field in the AMCC, the output of the probe is compared to the magnetic field in the AMCC at 1 kHz. The field in the AMCC Helmholtz coil is given by the geometry and the current through the coil, which is monitored on the precision shunt resistor of the coil.



## AM1D probe identification and configuration data

Item	<b>AM1DV3</b> Audio Magnetic 1D Field Probe
Type No	SP AM1 001 BA
Serial No	<b>3067</b>

Overall length	296 mm
Tip diameter	6.0 mm (at the tip)
Sensor offset	3.0 mm (centre of sensor from tip)
Internal Amplifier	20 dB

Manufacturer / Origin	Schmid & Partner Engineering AG, Zürich, Switzerland
Manufacturing date	February 17, 2009
Last calibration date	November 29, 2010

## Calibration data

Connector rotation angle	(in DASY system)	<b>265.1 °</b>	+/- 3.6 ° (k=2)
Sensor angle	(in DASY system)	<b>0.71 °</b>	+/- 0.5 ° (k=2)
Sensitivity at 1 kHz	(in DASY system)	<b>0.00738 V / (A/m)</b>	+/- 2.2 % (k=2)



Accredited by the Swiss Accreditation Service (SAS)  
The Swiss Accreditation Service is one of the signatories to the EA  
Multilateral Agreement for the recognition of calibration certificates

Accreditation No.: **SCS 108**

Client **Sporton CN (Auden)**

Certificate No: **DAE4-1210\_Nov11**

**CALIBRATION CERTIFICATE**

Object **DAE4 - SD 000 D04 BJ - SN: 1210**

Calibration procedure(s) **QA CAL-06.v23  
Calibration procedure for the data acquisition electronics (DAE)**

Calibration date: **November 18, 2011**

This calibration certificate documents the traceability to national standards, which realize the physical units of measurements (SI).  
The measurements and the uncertainties with confidence probability are given on the following pages and are part of the certificate.

All calibrations have been conducted in the closed laboratory facility: environment temperature (22 ± 3)°C and humidity < 70%.

Calibration Equipment used (M&TE critical for calibration)

Primary Standards	ID #	Cal Date (Certificate No.)	Scheduled Calibration
Keithley Multimeter Type 2001	SN: 0810278	28-Sep-11 (No:11450)	Sep-12
Secondary Standards	ID #	Check Date (in house)	Scheduled Check
Calibrator Box V1.1	SE UMS 006 AB 1004	08-Jun-11 (in house check)	In house check: Jun-12

Calibrated by:	Name <b>Andrea Guntli</b>	Function <b>Technician</b>	Signature 
Approved by:	Name <b>Fin Bomholt</b>	Function <b>R&amp;D Director</b>	Signature 

Issued: November 18, 2011

This calibration certificate shall not be reproduced except in full without written approval of the laboratory.



Accredited by the Swiss Accreditation Service (SAS)

The Swiss Accreditation Service is one of the signatories to the EA  
Multilateral Agreement for the recognition of calibration certificates

Accreditation No.: **SCS 108**

## Glossary

**DAE** data acquisition electronics  
**Connector angle** information used in DASY system to align probe sensor X to the robot coordinate system.

## Methods Applied and Interpretation of Parameters

- *DC Voltage Measurement:* Calibration Factor assessed for use in DASY system by comparison with a calibrated instrument traceable to national standards. The figure given corresponds to the full scale range of the voltmeter in the respective range.
- *Connector angle:* The angle of the connector is assessed measuring the angle mechanically by a tool inserted. Uncertainty is not required.
- The following parameters as documented in the Appendix contain technical information as a result from the performance test and require no uncertainty.
  - *DC Voltage Measurement Linearity:* Verification of the Linearity at +10% and -10% of the nominal calibration voltage. Influence of offset voltage is included in this measurement.
  - *Common mode sensitivity:* Influence of a positive or negative common mode voltage on the differential measurement.
  - *Channel separation:* Influence of a voltage on the neighbor channels not subject to an input voltage.
  - *AD Converter Values with inputs shorted:* Values on the internal AD converter corresponding to zero input voltage
  - *Input Offset Measurement:* Output voltage and statistical results over a large number of zero voltage measurements.
  - *Input Offset Current:* Typical value for information; Maximum channel input offset current, not considering the input resistance.
  - *Input resistance:* Typical value for information: DAE input resistance at the connector, during internal auto-zeroing and during measurement.
  - *Low Battery Alarm Voltage:* Typical value for information. Below this voltage, a battery alarm signal is generated.
  - *Power consumption:* Typical value for information. Supply currents in various operating modes.

## DC Voltage Measurement

A/D - Converter Resolution nominal

High Range: 1LSB = 6.1 $\mu$ V , full range = -100...+300 mV

Low Range: 1LSB = 61nV , full range = -1.....+3mV

DASY measurement parameters: Auto Zero Time: 3 sec; Measuring time: 3 sec

Calibration Factors	X	Y	Z
High Range	404.131 $\pm$ 0.1% (k=2)	404.957 $\pm$ 0.1% (k=2)	405.070 $\pm$ 0.1% (k=2)
Low Range	3.99774 $\pm$ 0.7% (k=2)	3.98274 $\pm$ 0.7% (k=2)	3.99864 $\pm$ 0.7% (k=2)

## Connector Angle

Connector Angle to be used in DASY system	68.0 $^{\circ}$ $\pm$ 1 $^{\circ}$
---	------------------------------------

## Appendix

### 1. DC Voltage Linearity

High Range	Reading ( $\mu\text{V}$ )	Difference ( $\mu\text{V}$ )	Error (%)
Channel X + Input	200005.7	-6.32	-0.00
Channel X + Input	20001.20	1.40	0.01
Channel X - Input	-19997.25	2.05	-0.01
Channel Y + Input	199993.7	-8.34	-0.00
Channel Y + Input	19998.85	-0.85	-0.00
Channel Y - Input	-19999.24	0.86	-0.00
Channel Z + Input	199997.0	-3.96	-0.00
Channel Z + Input	19999.03	-0.47	-0.00
Channel Z - Input	-19998.10	1.00	-0.01

Low Range	Reading ( $\mu\text{V}$ )	Difference ( $\mu\text{V}$ )	Error (%)
Channel X + Input	1999.9	-0.19	-0.01
Channel X + Input	201.19	1.19	0.59
Channel X - Input	-199.00	1.20	-0.60
Channel Y + Input	1999.7	-0.22	-0.01
Channel Y + Input	200.05	0.15	0.07
Channel Y - Input	-200.98	-0.68	0.34
Channel Z + Input	1999.9	-0.10	-0.00
Channel Z + Input	199.80	-0.10	-0.05
Channel Z - Input	-199.54	0.26	-0.13

### 2. Common mode sensitivity

DASY measurement parameters: Auto Zero Time: 3 sec; Measuring time: 3 sec

	Common mode Input Voltage (mV)	High Range Average Reading ( $\mu\text{V}$ )	Low Range Average Reading ( $\mu\text{V}$ )
Channel X	200	-5.74	-7.76
	- 200	9.09	7.53
Channel Y	200	-5.73	-4.92
	- 200	7.43	6.93
Channel Z	200	12.31	12.18
	- 200	-13.75	-14.25

### 3. Channel separation

DASY measurement parameters: Auto Zero Time: 3 sec; Measuring time: 3 sec

	Input Voltage (mV)	Channel X ( $\mu\text{V}$ )	Channel Y ( $\mu\text{V}$ )	Channel Z ( $\mu\text{V}$ )
Channel X	200	-	2.68	0.40
Channel Y	200	1.60	-	4.29
Channel Z	200	2.18	0.10	-

#### 4. AD-Converter Values with inputs shorted

DASY measurement parameters: Auto Zero Time: 3 sec; Measuring time: 3 sec

	High Range (LSB)	Low Range (LSB)
Channel X	15945	17150
Channel Y	15956	16019
Channel Z	15867	16444

#### 5. Input Offset Measurement

DASY measurement parameters: Auto Zero Time: 3 sec; Measuring time: 3 sec

Input 10M $\Omega$

	Average ( $\mu$ V)	min. Offset ( $\mu$ V)	max. Offset ( $\mu$ V)	Std. Deviation ( $\mu$ V)
Channel X	-0.50	-1.63	0.38	0.33
Channel Y	-0.92	-1.95	-0.17	0.36
Channel Z	-2.02	-4.12	-0.96	0.41

#### 6. Input Offset Current

Nominal Input circuitry offset current on all channels: <25fA

#### 7. Input Resistance (Typical values for information)

	Zeroing (kOhm)	Measuring (MOhm)
Channel X	200	200
Channel Y	200	200
Channel Z	200	200

#### 8. Low Battery Alarm Voltage (Typical values for information)

Typical values	Alarm Level (VDC)
Supply (+ Vcc)	+7.9
Supply (- Vcc)	-7.6

#### 9. Power Consumption (Typical values for information)

Typical values	Switched off (mA)	Stand by (mA)	Transmitting (mA)
Supply (+ Vcc)	+0.01	+6	+14
Supply (- Vcc)	-0.01	-8	-9