

System Check_Body_750MHz_170620

DUT: D750V3-SN:1099

Communication System: UID 0, CW (0); Frequency: 750 MHz; Duty Cycle: 1:1

Medium: MSL_750_170620 Medium parameters used: $f = 750$ MHz; $\sigma = 0.97$ S/m; $\epsilon_r = 54.646$; $\rho = 1000$ kg/m³

Ambient Temperature : 23.5 °C; Liquid Temperature : 22.7 °C

DASY5 Configuration:

- Probe: EX3DV4 - SN3819; ConvF(9.86, 9.86, 9.86); Calibrated: 2016.11.28;
- Sensor-Surface: 2mm (Mechanical Surface Detection)
- Electronics: DAE4 Sn1303; Calibrated: 2016.11.22
- Phantom: SAM2; Type: QD000P40CD; Serial: TP:1671
- Measurement SW: DASY52, Version 52.8 (8); SEMCAD X Version 14.6.10 (7331)

Pin=250mW/Area Scan (61x61x1): Interpolated grid: dx=15mm, dy=15mm

Maximum value of SAR (interpolated) = 2.67 W/kg

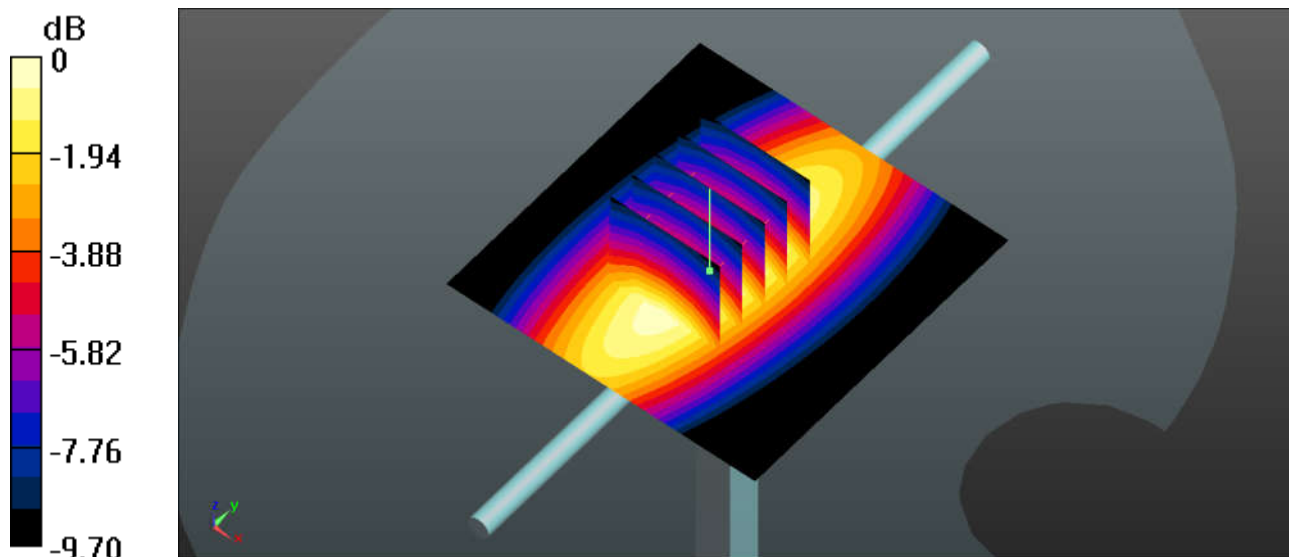
Pin=250mW/Zoom Scan (5x5x7)/Cube 0: Measurement grid: dx=8mm, dy=8mm, dz=5mm

Reference Value = 53.76 V/m; Power Drift = -0.05 dB

Peak SAR (extrapolated) = 3.10 W/kg

SAR(1 g) = 2.15 W/kg; SAR(10 g) = 1.45 W/kg

Maximum value of SAR (measured) = 2.69 W/kg



0 dB = 2.67 W/kg

System Check_Body_835MHz_170619

DUT: D835V2-SN:4d162

Communication System: UID 0, CW; Frequency: 835 MHz; Duty Cycle: 1:1

Medium: MSL_835_170619 Medium parameters used: $f = 835 \text{ MHz}$; $\sigma = 1.011 \text{ S/m}$; $\epsilon_r = 56.243$; $\rho = 1000 \text{ kg/m}^3$

Ambient Temperature : 23.5 °C; Liquid Temperature : 22.5 °C

DASY5 Configuration:

- Probe: EX3DV4 - SN3819; ConvF(9.53, 9.53, 9.53); Calibrated: 2016.11.28;
- Sensor-Surface: 4mm (Mechanical Surface Detection)
- Electronics: DAE4 Sn1303; Calibrated: 2016.11.22
- Phantom: SAM2; Type: QD000P40CD; Serial: TP:1671
- Measurement SW: DASY52, Version 52.8 (8); SEMCAD X Version 14.6.10 (7331)

Pin=250mW/Area Scan (61x61x1): Interpolated grid: dx=15mm, dy=15mm

Maximum value of SAR (interpolated) = 2.70 W/kg

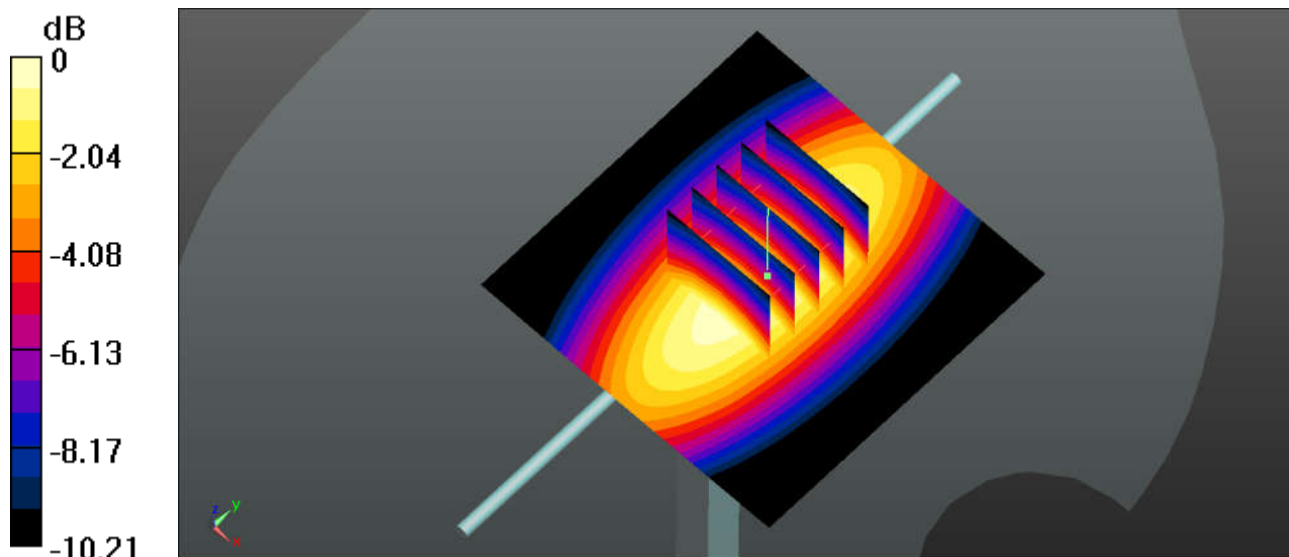
Pin=250mW/Zoom Scan (5x5x7)/Cube 0: Measurement grid: dx=8mm, dy=8mm, dz=5mm

Reference Value = 51.95 V/m; Power Drift = -0.02 dB

Peak SAR (extrapolated) = 3.62 W/kg

SAR(1 g) = 2.47 W/kg; SAR(10 g) = 1.63 W/kg

Maximum value of SAR (measured) = 2.66 W/kg



0 dB = 2.70 W/kg

System Check_Body_1750MHz_170621

DUT: D1750V2-SN:1069

Communication System: UID 0, CW; Frequency: 1750 MHz; Duty Cycle: 1:1

Medium: MSL_1800_170621 Medium parameters used: $f = 1750$ MHz; $\sigma = 1.514$ S/m; $\epsilon_r = 53.575$; $\rho = 1000$ kg/m³

Ambient Temperature : 23.6 °C; Liquid Temperature : 22.6 °C

DASY5 Configuration:

- Probe: EX3DV4 - SN3819; ConvF(8.08, 8.08, 8.08); Calibrated: 2016.11.28;
- Sensor-Surface: 2mm (Mechanical Surface Detection)
- Electronics: DAE4 Sn1303; Calibrated: 2016.11.22
- Phantom: SAM2; Type: QD000P40CD; Serial: TP:1671
- Measurement SW: DASY52, Version 52.8 (8); SEMCAD X Version 14.6.10 (7331)

Pin=250mW/Area Scan (61x61x1): Interpolated grid: dx=15mm, dy=15mm

Maximum value of SAR (interpolated) = 13.0 W/kg

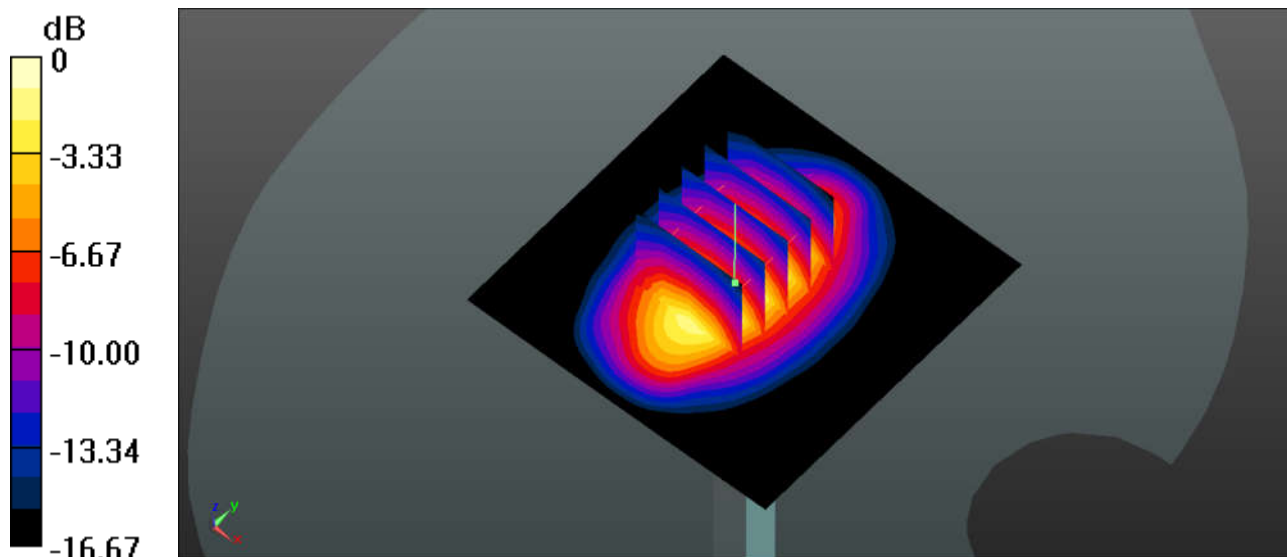
Pin=250mW/Zoom Scan (5x5x7)/Cube 0: Measurement grid: dx=8mm, dy=8mm, dz=5mm

Reference Value = 93.46 V/m; Power Drift = 0.03 dB

Peak SAR (extrapolated) = 16.2 W/kg

SAR(1 g) = 9.31 W/kg; SAR(10 g) = 4.98 W/kg

Maximum value of SAR (measured) = 13.0 W/kg



System Check_Body_1900MHz_170617

DUT: D1900V2-SN:5d182

Communication System: UID 0, CW; Frequency: 1900 MHz; Duty Cycle: 1:1

Medium: MSL_1900_170617 Medium parameters used: $f = 1900$ MHz; $\sigma = 1.576$ S/m; $\epsilon_r = 54.215$; $\rho = 1000$ kg/m³

Ambient Temperature : 23.4 °C; Liquid Temperature : 22.5 °C

DASY5 Configuration:

- Probe: EX3DV4 - SN3819; ConvF(7.77, 7.77, 7.77); Calibrated: 2016.11.28;
- Sensor-Surface: 2mm (Mechanical Surface Detection)
- Electronics: DAE4 Sn1303; Calibrated: 2016.11.22
- Phantom: SAM2; Type: QD000P40CD; Serial: TP:1671
- Measurement SW: DASY52, Version 52.8 (8); SEMCAD X Version 14.6.10 (7331)

Pin=250mW/Area Scan (61x61x1): Interpolated grid: dx=15mm, dy=15mm

Maximum value of SAR (interpolated) = 13.5 W/kg

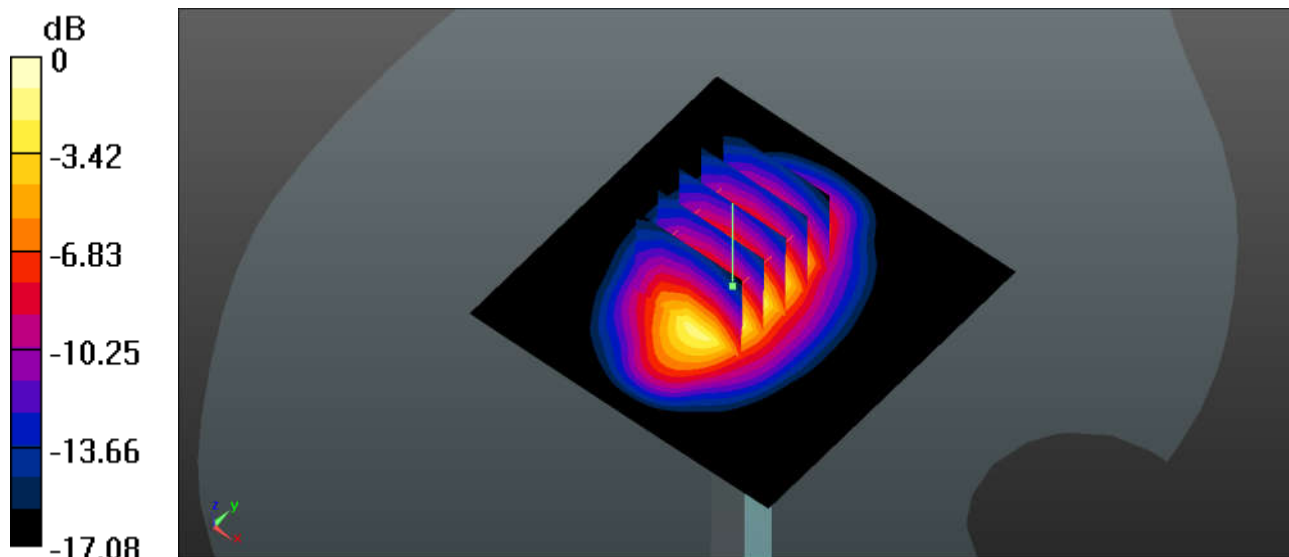
Pin=250mW/Zoom Scan (5x5x7)/Cube 0: Measurement grid: dx=8mm, dy=8mm, dz=5mm

Reference Value = 81.90 V/m; Power Drift = 0.11 dB

Peak SAR (extrapolated) = 17.0 W/kg

SAR(1 g) = 9.61 W/kg; SAR(10 g) = 5.04 W/kg

Maximum value of SAR (measured) = 13.5 W/kg



0 dB = 13.5 W/kg

System Check_Body_2450MHz_170625

DUT: D2450V2-SN:924

Communication System: UID 0, CW; Frequency: 2450 MHz; Duty Cycle: 1:1

Medium: MSL_2450_170625 Medium parameters used: $f = 2450$ MHz; $\sigma = 1.976$ S/m; $\epsilon_r = 54.13$; $\rho = 1000$ kg/m³

Ambient Temperature : 23.6 °C; Liquid Temperature : 22.8 °C

DASY5 Configuration:

- Probe: EX3DV4 - SN3819; ConvF(7.34, 7.34, 7.34); Calibrated: 2016.11.28;
- Sensor-Surface: 2mm (Mechanical Surface Detection)
- Electronics: DAE4 Sn1303; Calibrated: 2016.11.22
- Phantom: SAM2; Type: QD000P40CD; Serial: TP:1671
- Measurement SW: DASY52, Version 52.8 (8); SEMCAD X Version 14.6.10 (7331)

Pin=250mW/Area Scan (81x81x1): Interpolated grid: dx=12mm, dy=12mm

Maximum value of SAR (interpolated) = 22.2 W/kg

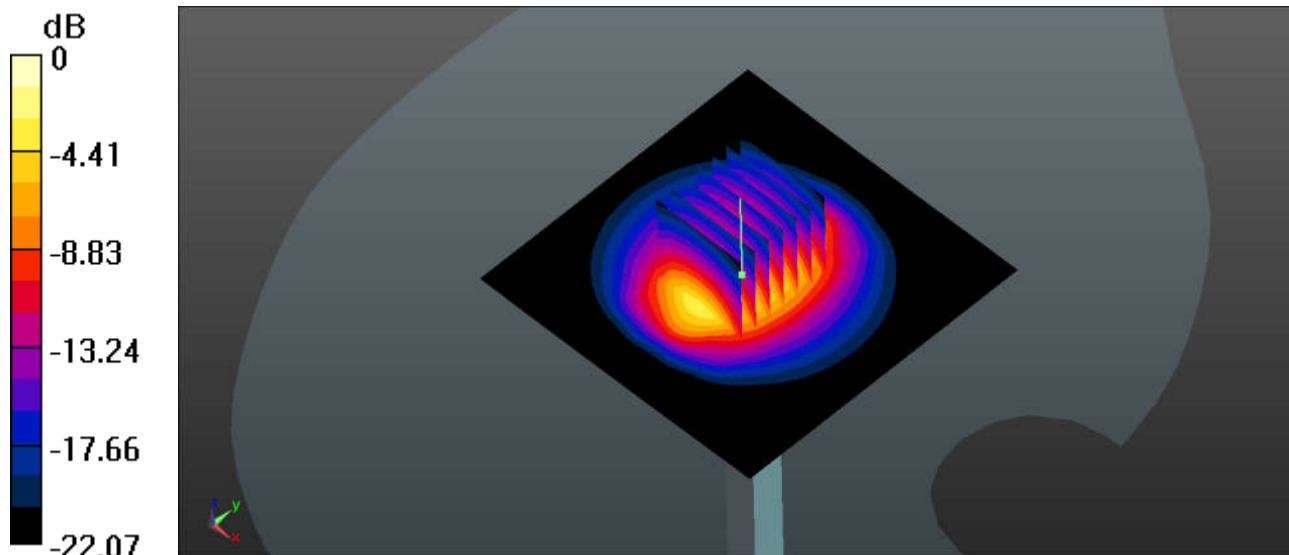
Pin=250mW/Zoom Scan (7x7x7)/Cube 0: Measurement grid: dx=5mm, dy=5mm, dz=5mm

Reference Value = 91.00 V/m; Power Drift = 0.02 dB

Peak SAR (extrapolated) = 29.9 W/kg

SAR(1 g) = 12.4 W/kg; SAR(10 g) = 5.85 W/kg

Maximum value of SAR (measured) = 22.1 W/kg



0 dB = 22.1 W/kg

System Check_Body_5250MHz_170624

DUT: D5GHzV2-SN:1167

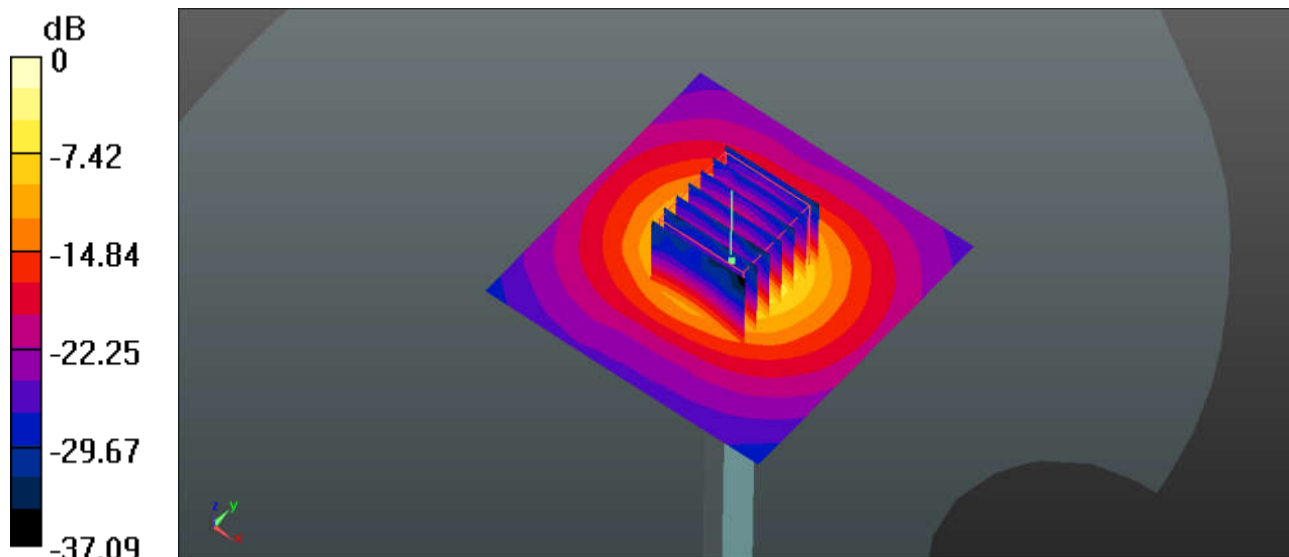
Communication System: UID 0, CW (0); Frequency: 5250 MHz; Duty Cycle: 1:1
Medium: MSL_5250_170624 Medium parameters used: $f = 5250$ MHz; $\sigma = 5.333$ S/m; $\epsilon_r = 51.06$; $\rho = 1000$ kg/m³
Ambient Temperature : 23.4 °C; Liquid Temperature : 22.8 °C

DASY5 Configuration:

- Probe: EX3DV4 - SN3819; ConvF(4.5, 4.5, 4.5); Calibrated: 2016.11.28;
- Sensor-Surface: 1.4mm (Mechanical Surface Detection)
- Electronics: DAE4 Sn1303; Calibrated: 2016.11.22
- Phantom: SAM2; Type: QD000P40CD; Serial: TP:1671
- Measurement SW: DASY52, Version 52.8 (8); SEMCAD X Version 14.6.10 (7331)

Pin=100mW/Area Scan (71x71x1): Interpolated grid: dx=10mm, dy=10mm
Maximum value of SAR (interpolated) = 17.6 W/kg

Pin=100mW/Zoom Scan (7x7x7)/Cube 0: Measurement grid: dx=4mm, dy=4mm, dz=1.4mm
Reference Value = 47.72 V/m; Power Drift = -0.01 dB
Peak SAR (extrapolated) = 30.6 W/kg
SAR(1 g) = 7.51 W/kg; SAR(10 g) = 2.05 W/kg
Maximum value of SAR (measured) = 18.3 W/kg



0 dB = 17.6 W/kg

System Check_Body_5600MHz_170624

DUT: D5GHzV2-SN:1167

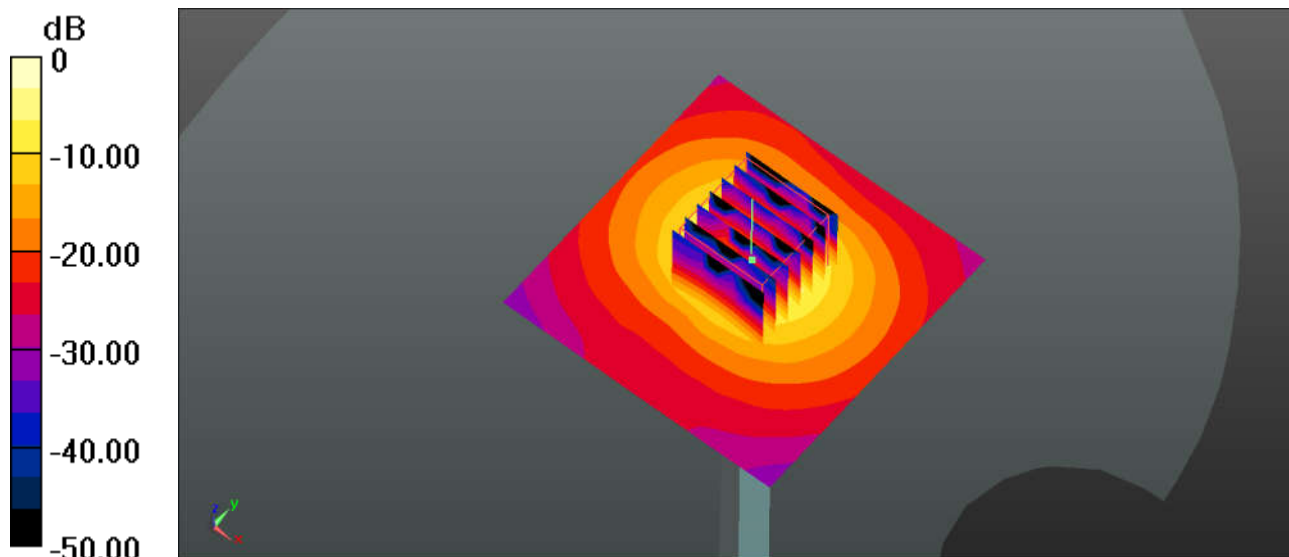
Communication System: UID 0, CW (0); Frequency: 5600 MHz; Duty Cycle: 1:1
Medium: MSL_5600_170624 Medium parameters used: $f = 5600$ MHz; $\sigma = 5.934$ S/m; $\epsilon_r = 50.422$; $\rho = 1000$ kg/m³
Ambient Temperature : 23.3 °C; Liquid Temperature : 22.4 °C

DASY5 Configuration:

- Probe: EX3DV4 - SN3819; ConvF(3.95, 3.95, 3.95); Calibrated: 2016.11.28;
- Sensor-Surface: 1.4mm (Mechanical Surface Detection)
- Electronics: DAE4 Sn1303; Calibrated: 2016.11.22
- Phantom: SAM2; Type: QD000P40CD; Serial: TP:1671
- Measurement SW: DASY52, Version 52.8 (8); SEMCAD X Version 14.6.10 (7331)

Pin=100mW/Area Scan (71x71x1): Interpolated grid: dx=10mm, dy=10mm
Maximum value of SAR (interpolated) = 20.8 W/kg

Pin=100mW/Zoom Scan (7x7x7)/Cube 0: Measurement grid: dx=4mm, dy=4mm, dz=1.4mm
Reference Value = 40.85 V/m; Power Drift = 0.02 dB
Peak SAR (extrapolated) = 39.2 W/kg
SAR(1 g) = 8.37 W/kg; SAR(10 g) = 2.23 W/kg
Maximum value of SAR (measured) = 21.6 W/kg



0 dB = 20.8 W/kg

System Check_Body_5750MHz_170624

DUT: D5GHzV2-SN:1167

Communication System: UID 0, CW (0); Frequency: 5750 MHz; Duty Cycle: 1:1

Medium: MSL_5750_170624 Medium parameters used: $f = 5750$ MHz; $\sigma = 6.051$ S/m; $\epsilon_r = 50.049$; $\rho = 1000$ kg/m³

Ambient Temperature : 23.5 °C; Liquid Temperature : 22.9 °C

DASY5 Configuration:

- Probe: EX3DV4 - SN3819; ConvF(4.13, 4.13, 4.13); Calibrated: 2016.11.28;
- Sensor-Surface: 1.4mm (Mechanical Surface Detection)
- Electronics: DAE4 Sn1303; Calibrated: 2016.11.22
- Phantom: SAM2; Type: QD000P40CD; Serial: TP:1671
- Measurement SW: DASY52, Version 52.8 (8); SEMCAD X Version 14.6.10 (7331)

Pin=100mW/Area Scan (71x71x1): Interpolated grid: dx=10mm, dy=10mm

Maximum value of SAR (interpolated) = 19.4 W/kg

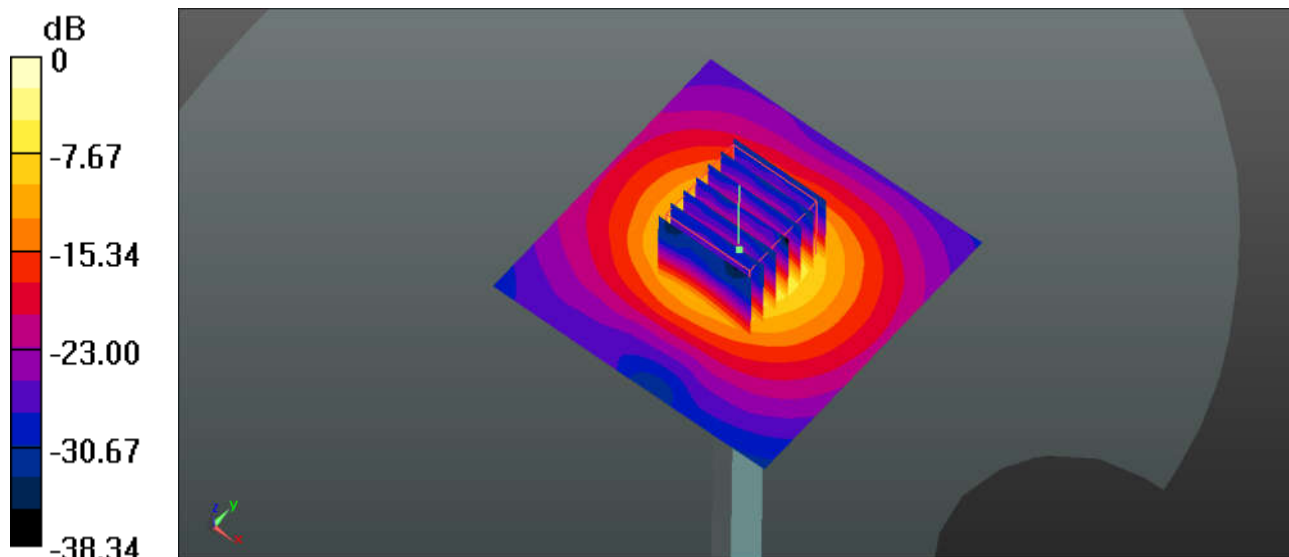
Pin=100mW/Zoom Scan (7x7x7)/Cube 0: Measurement grid: dx=4mm, dy=4mm, dz=1.4mm

Reference Value = 44.09 V/m; Power Drift = 0.04 dB

Peak SAR (extrapolated) = 36.7 W/kg

SAR(1 g) = 7.99 W/kg; SAR(10 g) = 2.2 W/kg

Maximum value of SAR (measured) = 20.0 W/kg



0 dB = 19.4 W/kg



Appendix B. Plots of High SAR Measurement

The plots are shown as follows.

01_GSM850_GPRS (4 Tx slots)_Left Cheek_Ch251

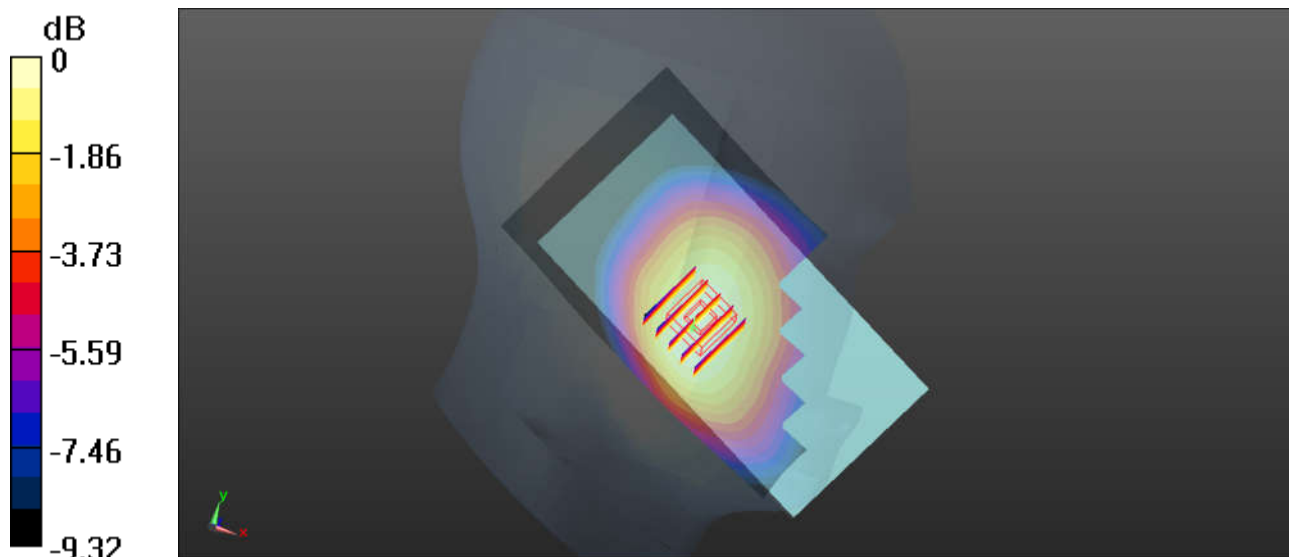
Communication System: UID 0, GPRS/EDGE12 (0); Frequency: 848.8 MHz; Duty Cycle: 1:2.08
 Medium: HSL_835_170618 Medium parameters used: $f = 848.8$ MHz; $\sigma = 0.925$ S/m; $\epsilon_r = 42.729$; $\rho = 1000$ kg/m³
 Ambient Temperature : 23.5 °C; Liquid Temperature : 22.7 °C

DASY5 Configuration:

- Probe: EX3DV4 - SN3819; ConvF(9.76, 9.76, 9.76); Calibrated: 2016.11.28;
- Sensor-Surface: 2mm (Mechanical Surface Detection)
- Electronics: DAE4 Sn1303; Calibrated: 2016.11.22
- Phantom: SAM2; Type: QD000P40CD; Serial: TP:1671
- Measurement SW: DASY52, Version 52.8 (8); SEMCAD X Version 14.6.10 (7331)

Ch251/Area Scan (71x131x1): Interpolated grid: dx=15mm, dy=15mm
 Maximum value of SAR (interpolated) = 0.791 W/kg

Ch251/Zoom Scan (5x5x7)/Cube 0: Measurement grid: dx=8mm, dy=8mm, dz=5mm
 Reference Value = 3.783 V/m; Power Drift = 0.12 dB
 Peak SAR (extrapolated) = 0.835 W/kg
SAR(1 g) = 0.689 W/kg; SAR(10 g) = 0.544 W/kg
 Maximum value of SAR (measured) = 0.771 W/kg



0 dB = 0.791 W/kg

02_GSM1900_GPRS (4 Tx slots)_Right Cheek_Ch512

Communication System: UID 0, GPRS/EDGE12 (0); Frequency: 1850.2 MHz; Duty Cycle: 1:2.08
 Medium: HSL_1900_170617 Medium parameters used: $f = 1850.2$ MHz; $\sigma = 1.371$ S/m; $\epsilon_r = 40.538$;

$\rho = 1000$ kg/m³

Ambient Temperature : 23.4 °C; Liquid Temperature : 22.6 °C

DASY5 Configuration:

- Probe: EX3DV4 - SN3819; ConvF(8.17, 8.17, 8.17); Calibrated: 2016.11.28;
- Sensor-Surface: 2mm (Mechanical Surface Detection)
- Electronics: DAE4 Sn1303; Calibrated: 2016.11.22
- Phantom: SAM2; Type: QD000P40CD; Serial: TP:1671
- Measurement SW: DASY52, Version 52.8 (8); SEMCAD X Version 14.6.10 (7331)

Ch512/Area Scan (71x131x1): Interpolated grid: dx=15mm, dy=15mm

Maximum value of SAR (interpolated) = 0.216 W/kg

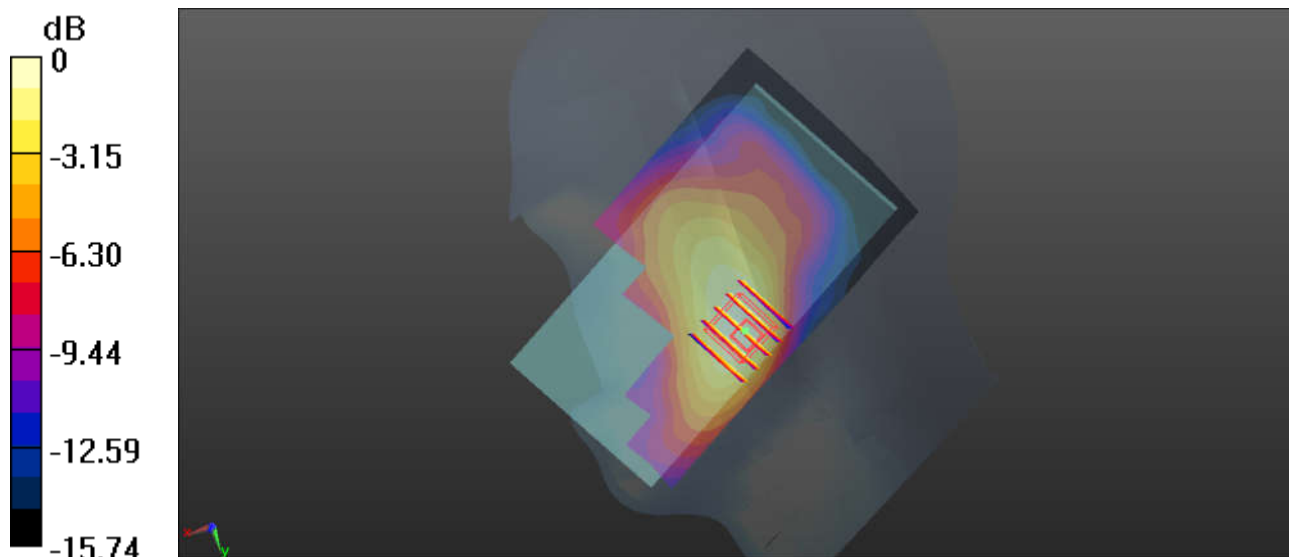
Ch512/Zoom Scan (5x5x7)/Cube 0: Measurement grid: dx=8mm, dy=8mm, dz=5mm

Reference Value = 1.544 V/m; Power Drift = 0.02 dB

Peak SAR (extrapolated) = 0.249 W/kg

SAR(1 g) = 0.167 W/kg; SAR(10 g) = 0.110 W/kg

Maximum value of SAR (measured) = 0.203 W/kg



0 dB = 0.216 W/kg

03_WCDMA Band V_RMC 12.2Kbps_Left Cheek_Ch4182

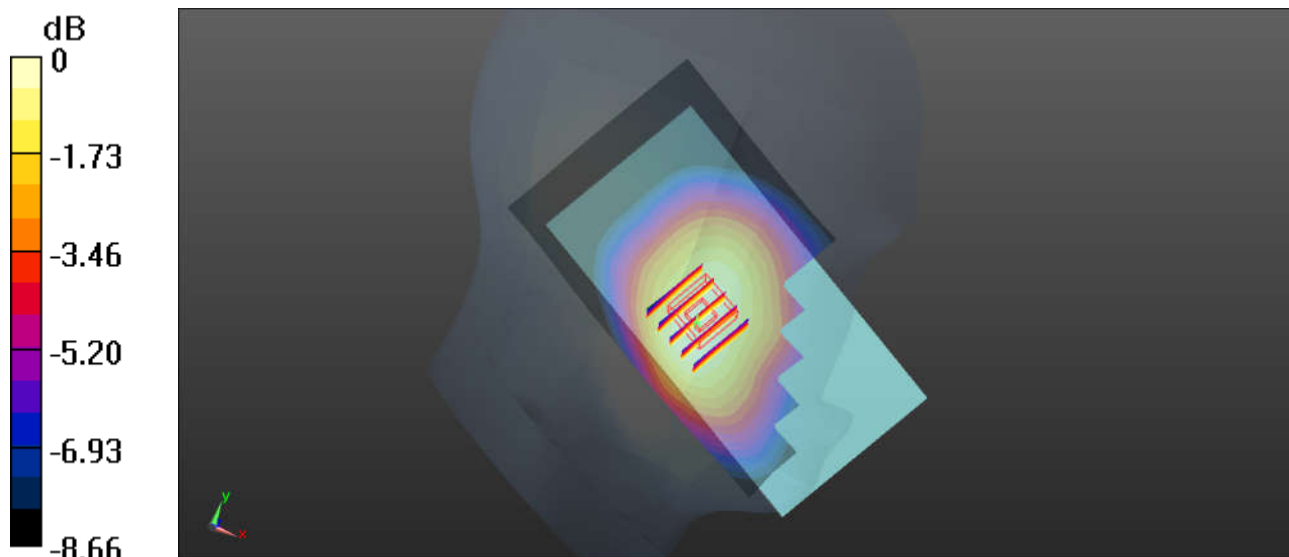
Communication System: UID 0, UMTS (0); Frequency: 836.4 MHz; Duty Cycle: 1:1
Medium: HSL_835_170618 Medium parameters used: $f = 836.4$ MHz; $\sigma = 0.912$ S/m; $\epsilon_r = 42.893$; $\rho = 1000$ kg/m³
Ambient Temperature : 23.5 °C; Liquid Temperature : 22.7 °C

DASY5 Configuration:

- Probe: EX3DV4 - SN3819; ConvF(9.76, 9.76, 9.76); Calibrated: 2016.11.28;
- Sensor-Surface: 2mm (Mechanical Surface Detection)
- Electronics: DAE4 Sn1303; Calibrated: 2016.11.22
- Phantom: SAM2; Type: QD000P40CD; Serial: TP:1671
- Measurement SW: DASY52, Version 52.8 (8); SEMCAD X Version 14.6.10 (7331)

Ch4182/Area Scan (71x131x1): Interpolated grid: dx=15mm, dy=15mm
Maximum value of SAR (interpolated) = 0.287 W/kg

Ch4182/Zoom Scan (5x5x7)/Cube 0: Measurement grid: dx=8mm, dy=8mm, dz=5mm
Reference Value = 2.247 V/m; Power Drift = 0.07 dB
Peak SAR (extrapolated) = 0.308 W/kg
SAR(1 g) = 0.254 W/kg; SAR(10 g) = 0.200 W/kg
Maximum value of SAR (measured) = 0.285 W/kg



0 dB = 0.287 W/kg

04_WCDMA Band IV_RMC 12.2Kbps_Right Cheek_Ch1513

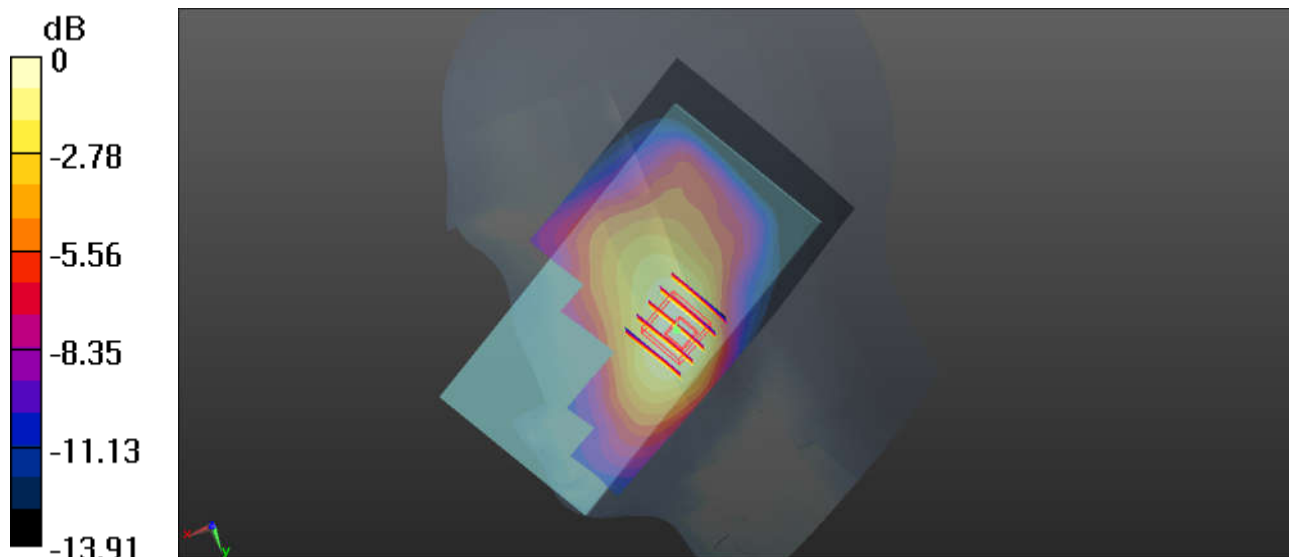
Communication System: UID 0, UMTS (0); Frequency: 1752.6 MHz; Duty Cycle: 1:1
 Medium: HSL_1800_170618 Medium parameters used: $f = 1752.6$ MHz; $\sigma = 1.384$ S/m; $\epsilon_r = 40.824$;
 $\rho = 1000$ kg/m³
 Ambient Temperature : 23.4 °C; Liquid Temperature : 22.7 °C

DASY5 Configuration:

- Probe: EX3DV4 - SN3819; ConvF(8.56, 8.56, 8.56); Calibrated: 2016.11.28;
- Sensor-Surface: 2mm (Mechanical Surface Detection)
- Electronics: DAE4 Sn1303; Calibrated: 2016.11.22
- Phantom: SAM2; Type: QD000P40CD; Serial: TP:1671
- Measurement SW: DASY52, Version 52.8 (8); SEMCAD X Version 14.6.10 (7331)

Ch1513/Area Scan (71x131x1): Interpolated grid: dx=15mm, dy=15mm
 Maximum value of SAR (interpolated) = 0.345 W/kg

Ch1513/Zoom Scan (5x5x7)/Cube 0: Measurement grid: dx=8mm, dy=8mm, dz=5mm
 Reference Value = 1.502 V/m; Power Drift = 0.12 dB
 Peak SAR (extrapolated) = 0.385 W/kg
SAR(1 g) = 0.276 W/kg; SAR(10 g) = 0.187 W/kg
 Maximum value of SAR (measured) = 0.325 W/kg



0 dB = 0.345 W/kg

05_WCDMA Band II_RMC 12.2Kbps_Right Cheek_Ch9400

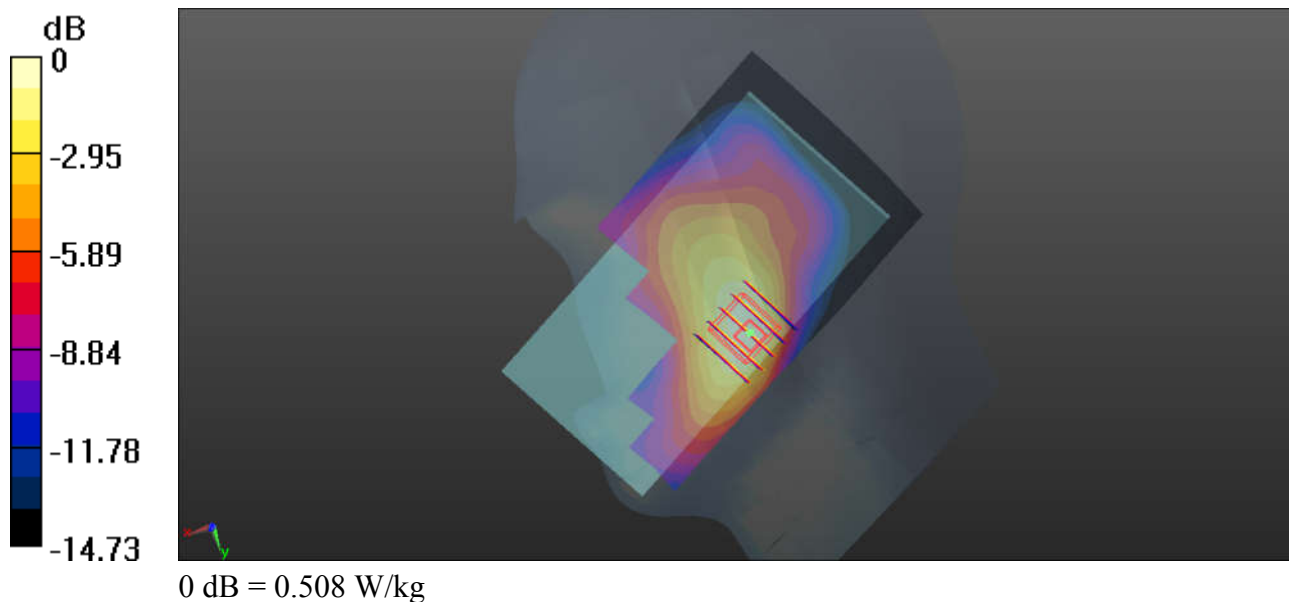
Communication System: UID 0, UMTS (0); Frequency: 1880 MHz; Duty Cycle: 1:1
 Medium: HSL_1900_170617 Medium parameters used: $f = 1880$ MHz; $\sigma = 1.402$ S/m; $\epsilon_r = 40.407$; $\rho = 1000$ kg/m³
 Ambient Temperature : 23.4 °C; Liquid Temperature : 22.6 °C

DASY5 Configuration:

- Probe: EX3DV4 - SN3819; ConvF(8.17, 8.17, 8.17); Calibrated: 2016.11.28;
- Sensor-Surface: 2mm (Mechanical Surface Detection)
- Electronics: DAE4 Sn1303; Calibrated: 2016.11.22
- Phantom: SAM2; Type: QD000P40CD; Serial: TP:1671
- Measurement SW: DASY52, Version 52.8 (8); SEMCAD X Version 14.6.10 (7331)

Ch9400/Area Scan (71x131x1): Interpolated grid: dx=15mm, dy=15mm
 Maximum value of SAR (interpolated) = 0.508 W/kg

Ch9400/Zoom Scan (5x5x7)/Cube 0: Measurement grid: dx=8mm, dy=8mm, dz=5mm
 Reference Value = 2.031 V/m; Power Drift = 0.05 dB
 Peak SAR (extrapolated) = 0.542 W/kg
SAR(1 g) = 0.369 W/kg; SAR(10 g) = 0.241 W/kg
 Maximum value of SAR (measured) = 0.454 W/kg



06_LTE Band 12_10M_QPSK_1RB_49Offset_Left Cheek_Ch23095

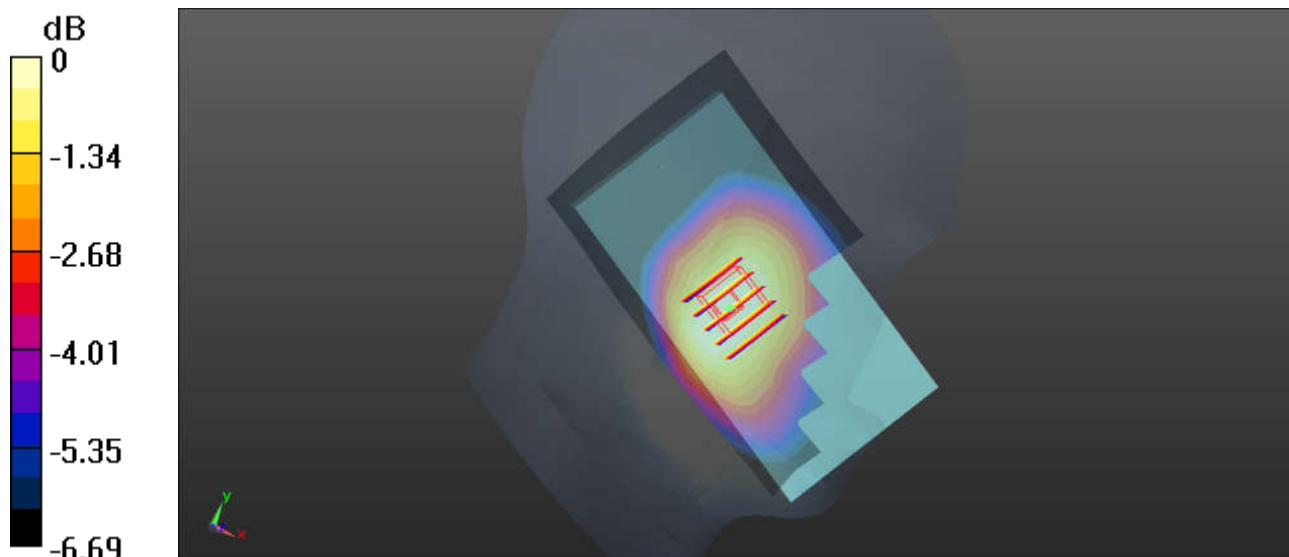
Communication System: UID 0, LTE (0); Frequency: 707.5 MHz; Duty Cycle: 1:1
Medium: HSL_750_170619 Medium parameters used: $f = 707.5$ MHz; $\sigma = 0.857$ S/m; $\epsilon_r = 41.861$; $\rho = 1000$ kg/m³
Ambient Temperature : 23.4 °C; Liquid Temperature : 22.8 °C

DASY5 Configuration:

- Probe: EX3DV4 - SN3819; ConvF(10.11, 10.11, 10.11); Calibrated: 2016.11.28;
- Sensor-Surface: 2mm (Mechanical Surface Detection)
- Electronics: DAE4 Sn1303; Calibrated: 2016.11.22
- Phantom: SAM2; Type: QD000P40CD; Serial: TP:1671
- Measurement SW: DASY52, Version 52.8 (8); SEMCAD X Version 14.6.10 (7331)

Ch23095/Area Scan (71x131x1): Interpolated grid: dx=15mm, dy=15mm
Maximum value of SAR (interpolated) = 0.187 W/kg

Ch23095/Zoom Scan (5x5x7)/Cube 0: Measurement grid: dx=8mm, dy=8mm, dz=5mm
Reference Value = 2.330 V/m; Power Drift = 0.08 dB
Peak SAR (extrapolated) = 0.201 W/kg
SAR(1 g) = 0.172 W/kg; SAR(10 g) = 0.142 W/kg
Maximum value of SAR (measured) = 0.190 W/kg



07_LTE Band 5_10M_QPSK_1RB_49Offset_Left Cheek_Ch20525

Communication System: UID 0, LTE (0); Frequency: 836.5 MHz; Duty Cycle: 1:1

Medium: HSL_835_170618 Medium parameters used: $f = 836.5$ MHz; $\sigma = 0.912$ S/m; $\epsilon_r = 42.892$; $\rho = 1000$ kg/m³

Ambient Temperature : 23.5 °C; Liquid Temperature : 22.7 °C

DASY5 Configuration:

- Probe: EX3DV4 - SN3819; ConvF(9.76, 9.76, 9.76); Calibrated: 2016.11.28;
- Sensor-Surface: 2mm (Mechanical Surface Detection)
- Electronics: DAE4 Sn1303; Calibrated: 2016.11.22
- Phantom: SAM2; Type: QD000P40CD; Serial: TP:1671
- Measurement SW: DASY52, Version 52.8 (8); SEMCAD X Version 14.6.10 (7331)

Ch20525/Area Scan (71x131x1): Interpolated grid: dx=15mm, dy=15mm

Maximum value of SAR (interpolated) = 0.257 W/kg

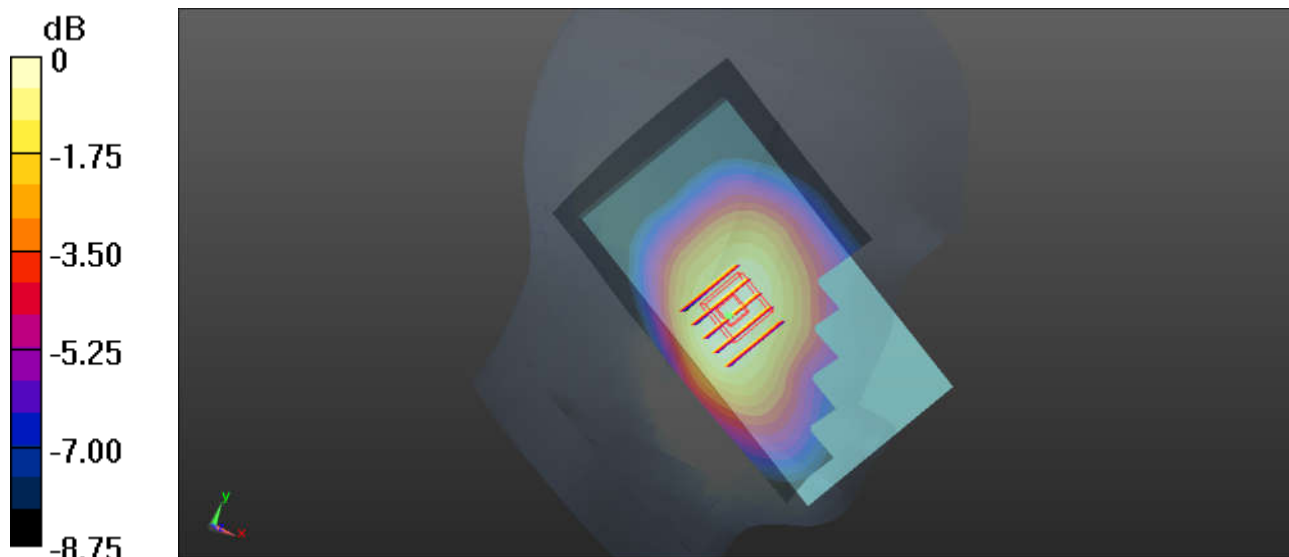
Ch20525/Zoom Scan (5x5x7)/Cube 0: Measurement grid: dx=8mm, dy=8mm, dz=5mm

Reference Value = 2.607 V/m; Power Drift = -0.09 dB

Peak SAR (extrapolated) = 0.274 W/kg

SAR(1 g) = 0.226 W/kg; SAR(10 g) = 0.178 W/kg

Maximum value of SAR (measured) = 0.254 W/kg



08_LTE Band 4_20M_QPSK_1RB_49Offset_Right Cheek_Ch20175

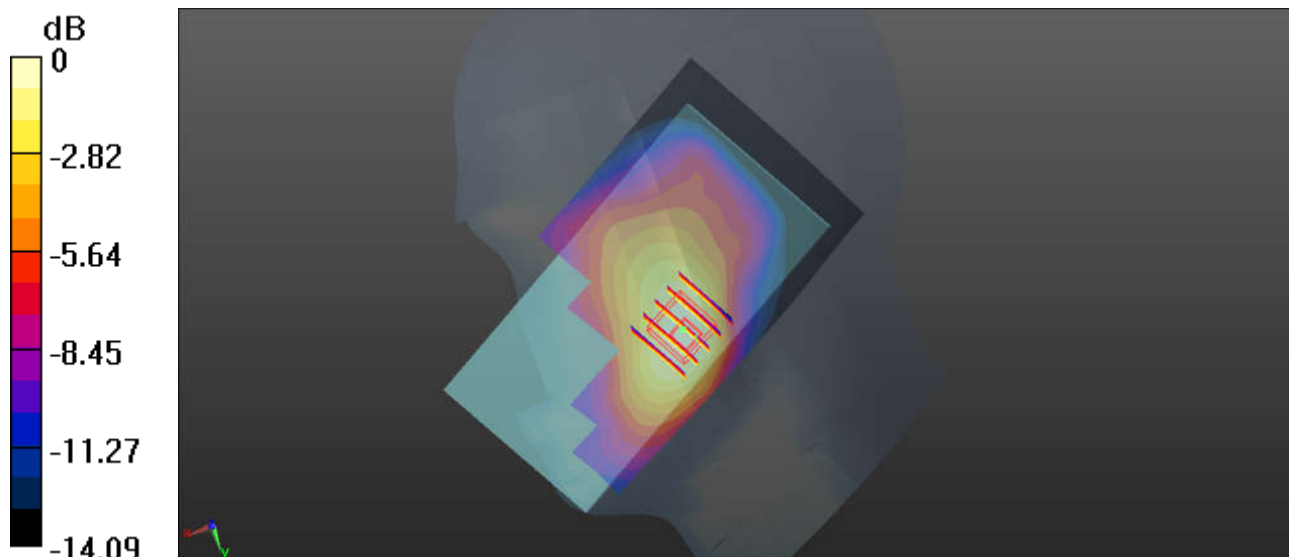
Communication System: UID 0, LTE (0); Frequency: 1732.5 MHz; Duty Cycle: 1:1
 Medium: HSL_1800_170618 Medium parameters used: $f = 1732.5$ MHz; $\sigma = 1.364$ S/m; $\epsilon_r = 40.884$;
 $\rho = 1000$ kg/m³
 Ambient Temperature : 23.4 °C; Liquid Temperature : 22.7 °C

DASY5 Configuration:

- Probe: EX3DV4 - SN3819; ConvF(8.56, 8.56, 8.56); Calibrated: 2016.11.28;
- Sensor-Surface: 2mm (Mechanical Surface Detection)
- Electronics: DAE4 Sn1303; Calibrated: 2016.11.22
- Phantom: SAM2; Type: QD000P40CD; Serial: TP:1671
- Measurement SW: DASY52, Version 52.8 (8); SEMCAD X Version 14.6.10 (7331)

Ch20175/Area Scan (71x131x1): Interpolated grid: dx=15mm, dy=15mm
 Maximum value of SAR (interpolated) = 0.291 W/kg

Ch20175/Zoom Scan (5x5x7)/Cube 0: Measurement grid: dx=8mm, dy=8mm, dz=5mm
 Reference Value = 2.302 V/m; Power Drift = 0.09 dB
 Peak SAR (extrapolated) = 0.314 W/kg
SAR(1 g) = 0.230 W/kg; SAR(10 g) = 0.156 W/kg
 Maximum value of SAR (measured) = 0.268 W/kg



0 dB = 0.291 W/kg

09_LTE Band 66_20M_QPSK_1RB_49Offset_Right Cheek_Ch132322

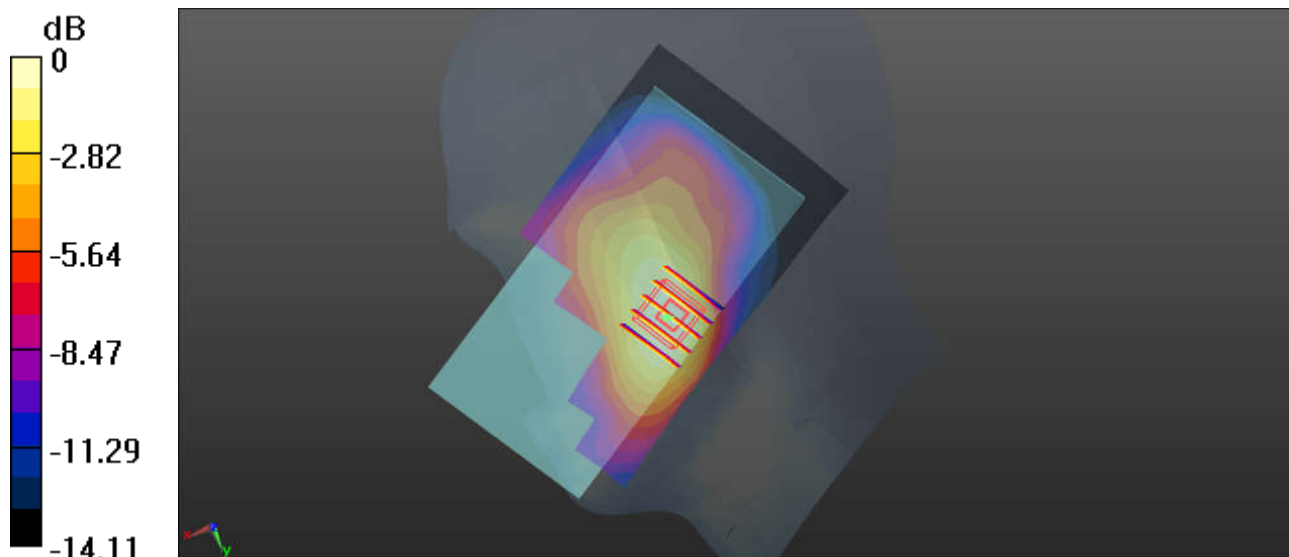
Communication System: UID 0, LTE (0); Frequency: 1745 MHz; Duty Cycle: 1:1
Medium: HSL_1800_170618 Medium parameters used: $f = 1745$ MHz; $\sigma = 1.377$ S/m; $\epsilon_r = 40.844$; $\rho = 1000$ kg/m³
Ambient Temperature : 23.4 °C; Liquid Temperature : 22.7 °C

DASY5 Configuration:

- Probe: EX3DV4 - SN3819; ConvF(8.56, 8.56, 8.56); Calibrated: 2016.11.28;
- Sensor-Surface: 2mm (Mechanical Surface Detection)
- Electronics: DAE4 Sn1303; Calibrated: 2016.11.22
- Phantom: SAM2; Type: QD000P40CD; Serial: TP:1671
- Measurement SW: DASY52, Version 52.8 (8); SEMCAD X Version 14.6.10 (7331)

Ch132322/Area Scan (71x131x1): Interpolated grid: dx=15mm, dy=15mm
Maximum value of SAR (interpolated) = 0.300 W/kg

Ch132322/Zoom Scan (5x5x7)/Cube 0: Measurement grid: dx=8mm, dy=8mm, dz=5mm
Reference Value = 1.627 V/m; Power Drift = 0.12 dB
Peak SAR (extrapolated) = 0.331 W/kg
SAR(1 g) = 0.240 W/kg; SAR(10 g) = 0.163 W/kg
Maximum value of SAR (measured) = 0.283 W/kg



0 dB = 0.300 W/kg

10_LTE Band 2_20M_QPSK_1RB_49Offset_Right Cheek_Ch18900

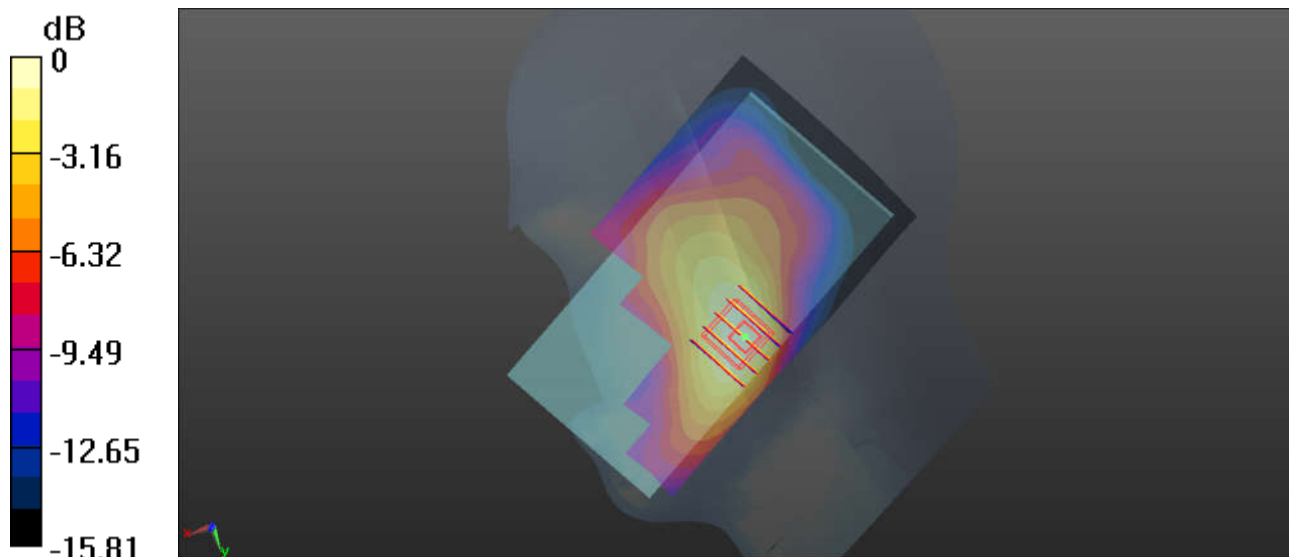
Communication System: UID 0, LTE (0); Frequency: 1880 MHz; Duty Cycle: 1:1
Medium: HSL_1900_170617 Medium parameters used: $f = 1880$ MHz; $\sigma = 1.402$ S/m; $\epsilon_r = 40.407$; $\rho = 1000$ kg/m³
Ambient Temperature : 23.4 °C; Liquid Temperature : 22.6 °C

DASY5 Configuration:

- Probe: EX3DV4 - SN3819; ConvF(8.17, 8.17, 8.17); Calibrated: 2016.11.28;
- Sensor-Surface: 2mm (Mechanical Surface Detection)
- Electronics: DAE4 Sn1303; Calibrated: 2016.11.22
- Phantom: SAM2; Type: QD000P40CD; Serial: TP:1671
- Measurement SW: DASY52, Version 52.8 (8); SEMCAD X Version 14.6.10 (7331)

Ch18900/Area Scan (71x131x1): Interpolated grid: dx=15mm, dy=15mm
Maximum value of SAR (interpolated) = 0.423 W/kg

Ch18900/Zoom Scan (5x5x7)/Cube 0: Measurement grid: dx=8mm, dy=8mm, dz=5mm
Reference Value = 2.393 V/m; Power Drift = 0.04 dB
Peak SAR (extrapolated) = 0.472 W/kg
SAR(1 g) = 0.312 W/kg; SAR(10 g) = 0.205 W/kg
Maximum value of SAR (measured) = 0.402 W/kg



0 dB = 0.423 W/kg

11_WLAN2.4GHz_802.11b 1Mbps_Left Cheek_Ch1

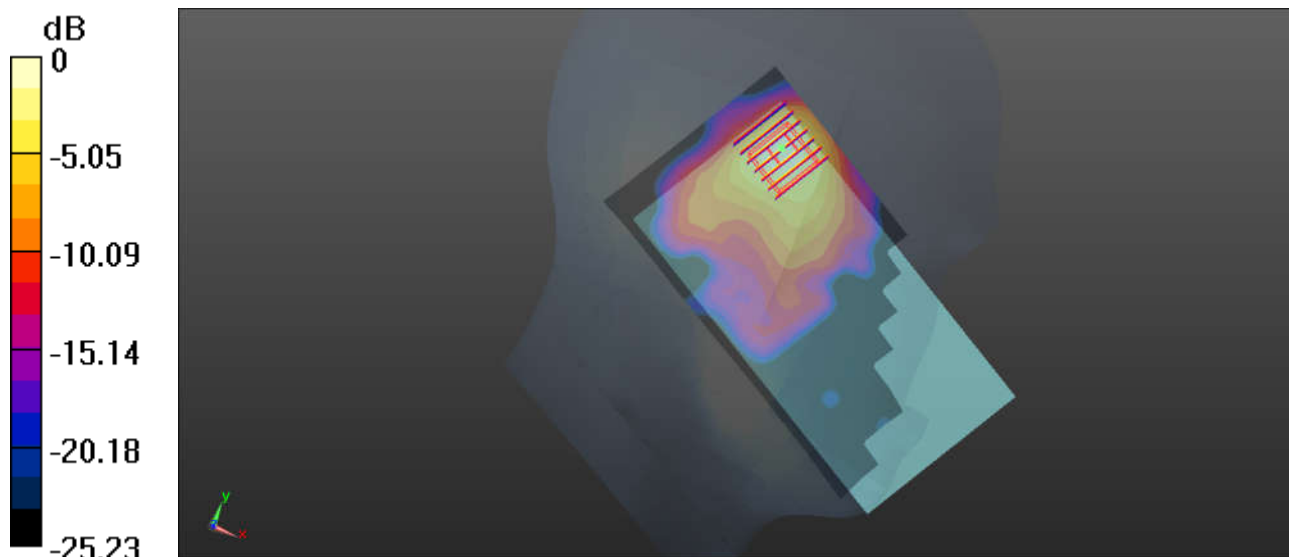
Communication System: UID 0, WIFI (0); Frequency: 2412 MHz; Duty Cycle: 1:1.025
Medium: HSL_2450_170622 Medium parameters used: $f = 2412$ MHz; $\sigma = 1.768$ S/m; $\epsilon_r = 37.788$; $\rho = 1000$ kg/m³
Ambient Temperature : 23.5 °C; Liquid Temperature : 22.4 °C

DASY5 Configuration:

- Probe: EX3DV4 - SN3819; ConvF(7.24, 7.24, 7.24); Calibrated: 2016.11.28;
- Sensor-Surface: 2mm (Mechanical Surface Detection)
- Electronics: DAE4 Sn1303; Calibrated: 2016.11.22
- Phantom: SAM2; Type: QD000P40CD; Serial: TP:1671
- Measurement SW: DASY52, Version 52.8 (8); SEMCAD X Version 14.6.10 (7331)

Ch1/Area Scan (81x161x1): Interpolated grid: dx=12mm, dy=12mm
Maximum value of SAR (interpolated) = 1.84 W/kg

Ch1/Zoom Scan (7x7x7)/Cube 0: Measurement grid: dx=5mm, dy=5mm, dz=5mm
Reference Value = 2.287 V/m; Power Drift = 0.03 dB
Peak SAR (extrapolated) = 2.40 W/kg
SAR(1 g) = 1.07 W/kg; SAR(10 g) = 0.552 W/kg
Maximum value of SAR (measured) = 1.77 W/kg



12_WLAN 5.3GHz_802.11a 6Mbps_Left Tilted_Ch52

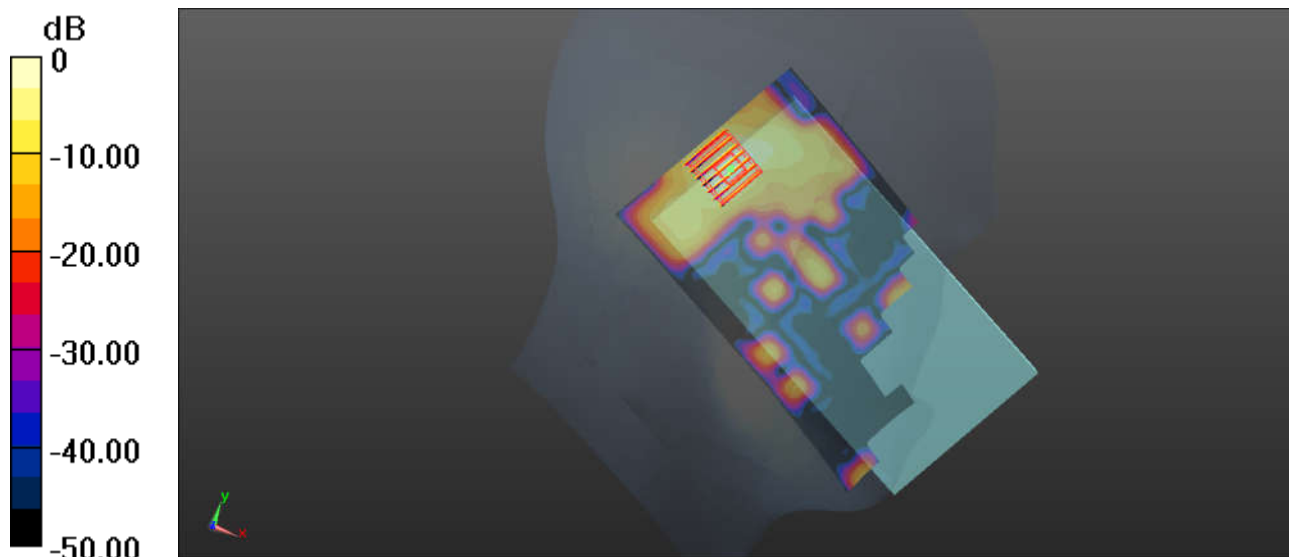
Communication System: UID 0, WIFI (0); Frequency: 5260 MHz; Duty Cycle: 1:1.144
Medium: HSL_5250_170623 Medium parameters used: $f = 5260$ MHz; $\sigma = 4.613$ S/m; $\epsilon_r = 36.201$; $\rho = 1000$ kg/m³
Ambient Temperature : 23.5 °C; Liquid Temperature : 22.5 °C

DASY5 Configuration:

- Probe: EX3DV4 - SN3819; ConvF(5.17, 5.17, 5.17); Calibrated: 2016.11.28;
- Sensor-Surface: 1.4mm (Mechanical Surface Detection)
- Electronics: DAE4 Sn1303; Calibrated: 2016.11.22
- Phantom: SAM2; Type: QD000P40CD; Serial: TP:1671
- Measurement SW: DASY52, Version 52.8 (8); SEMCAD X Version 14.6.10 (7331)

Ch52/Area Scan (101x191x1): Interpolated grid: dx=10mm, dy=10mm
Maximum value of SAR (interpolated) = 2.13 W/kg

Ch52/Zoom Scan (7x7x7)/Cube 0: Measurement grid: dx=4mm, dy=4mm, dz=1.4mm
Reference Value = 1.354 V/m; Power Drift = 0.05 dB
Peak SAR (extrapolated) = 3.21 W/kg
SAR(1 g) = 0.801 W/kg; SAR(10 g) = 0.232 W/kg
Maximum value of SAR (measured) = 2.06 W/kg



13_WLAN 5.5GHz_802.11a 6Mbps_Left Tilted_Ch144

Communication System: UID 0, WIFI (0); Frequency: 5720 MHz; Duty Cycle: 1:1.144

Medium: HSL_5600_170623 Medium parameters used: $f = 5720$ MHz; $\sigma = 5.1$ S/m; $\epsilon_r = 35.61$; $\rho = 1000$ kg/m³

Ambient Temperature : 23.5 °C; Liquid Temperature : 22.7 °C

DASY5 Configuration:

- Probe: EX3DV4 - SN3819; ConvF(4.55, 4.55, 4.55); Calibrated: 2016.11.28;
- Sensor-Surface: 1.4mm (Mechanical Surface Detection)
- Electronics: DAE4 Sn1303; Calibrated: 2016.11.22
- Phantom: SAM2; Type: QD000P40CD; Serial: TP:1671
- Measurement SW: DASY52, Version 52.8 (8); SEMCAD X Version 14.6.10 (7331)

Ch144/Area Scan (101x191x1): Interpolated grid: dx=10mm, dy=10mm

Maximum value of SAR (interpolated) = 1.96 W/kg

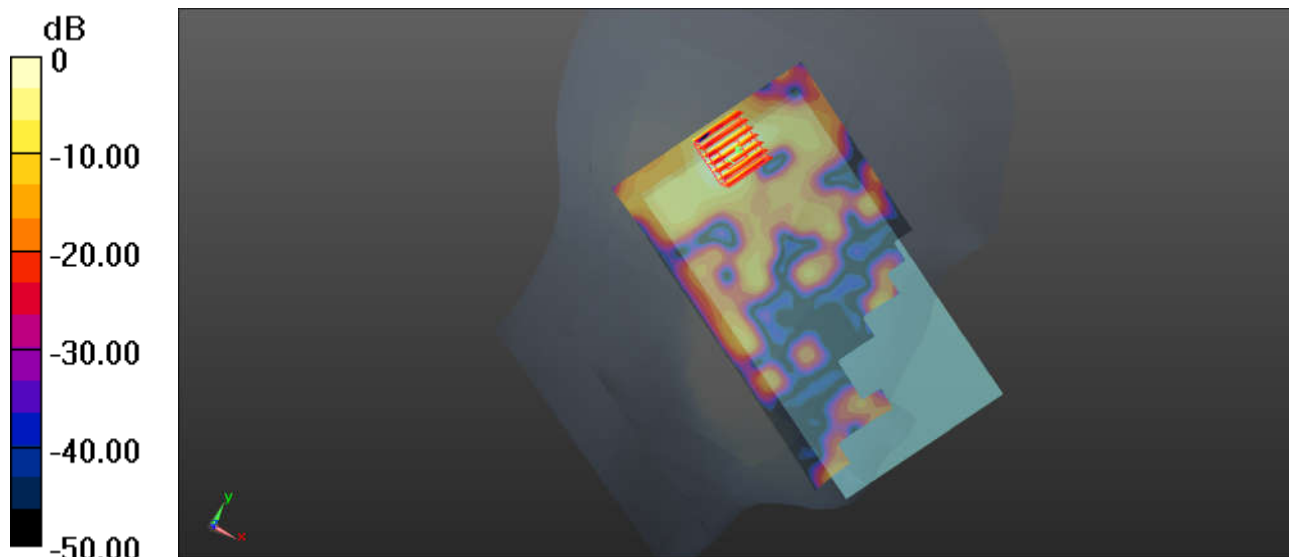
Ch144/Zoom Scan (7x7x7)/Cube 0: Measurement grid: dx=4mm, dy=4mm, dz=1.4mm

Reference Value = 2.142 V/m; Power Drift = -0.02 dB

Peak SAR (extrapolated) = 2.76 W/kg

SAR(1 g) = 0.682 W/kg; SAR(10 g) = 0.205 W/kg

Maximum value of SAR (measured) = 1.72 W/kg



14_WLAN 5.8GHz_802.11a 6Mbps_Left Cheek_Ch157

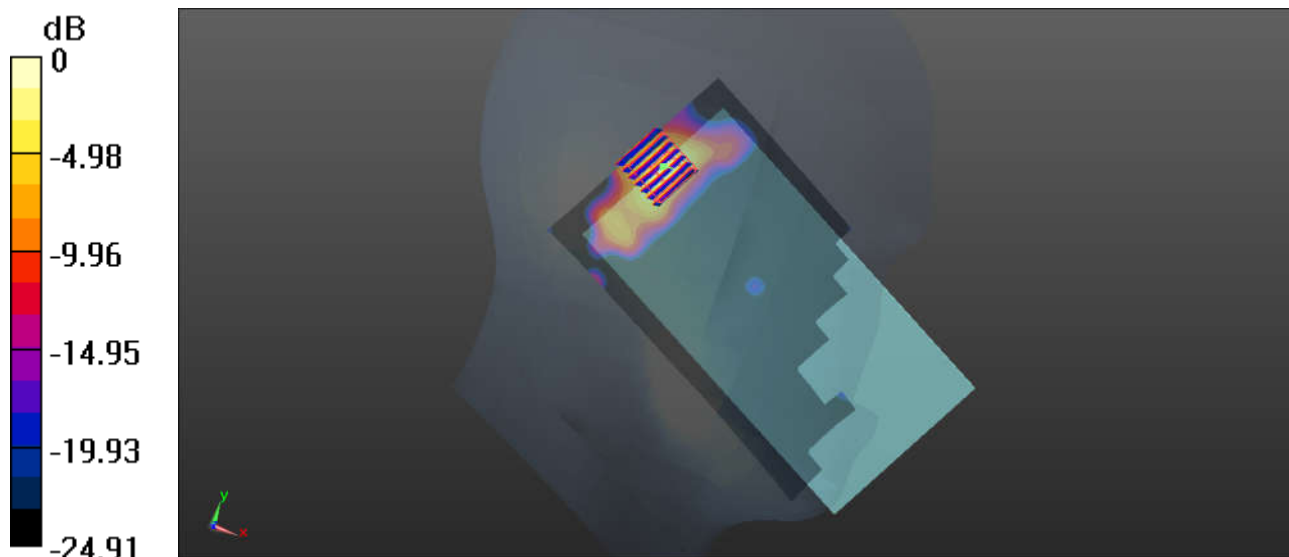
Communication System: UID 0, WIFI (0); Frequency: 5785 MHz; Duty Cycle: 1:1.144
Medium: HSL_5750_170623 Medium parameters used: $f = 5785 \text{ MHz}$; $\sigma = 5.181 \text{ S/m}$; $\epsilon_r = 35.469$; $\rho = 1000 \text{ kg/m}^3$
Ambient Temperature : 23.4 °C; Liquid Temperature : 22.9 °C

DASY5 Configuration:

- Probe: EX3DV4 - SN3819; ConvF(4.7, 4.7, 4.7); Calibrated: 2016.11.28;
- Sensor-Surface: 1.4mm (Mechanical Surface Detection)
- Electronics: DAE4 Sn1303; Calibrated: 2016.11.22
- Phantom: SAM2; Type: QD000P40CD; Serial: TP:1671
- Measurement SW: DASY52, Version 52.8 (8); SEMCAD X Version 14.6.10 (7331)

Ch157/Area Scan (101x191x1): Interpolated grid: dx=10mm, dy=10mm
Maximum value of SAR (interpolated) = 2.03 W/kg

Ch157/Zoom Scan (7x7x7)/Cube 0: Measurement grid: dx=4mm, dy=4mm, dz=1.4mm
Reference Value = 2.223 V/m; Power Drift = 0.05 dB
Peak SAR (extrapolated) = 4.24 W/kg
SAR(1 g) = 0.944 W/kg; SAR(10 g) = 0.272 W/kg
Maximum value of SAR (measured) = 2.46 W/kg



0 dB = 2.03 W/kg

15_GSM850_GPRS (4 Tx slots)_Back_10mm_Ch251

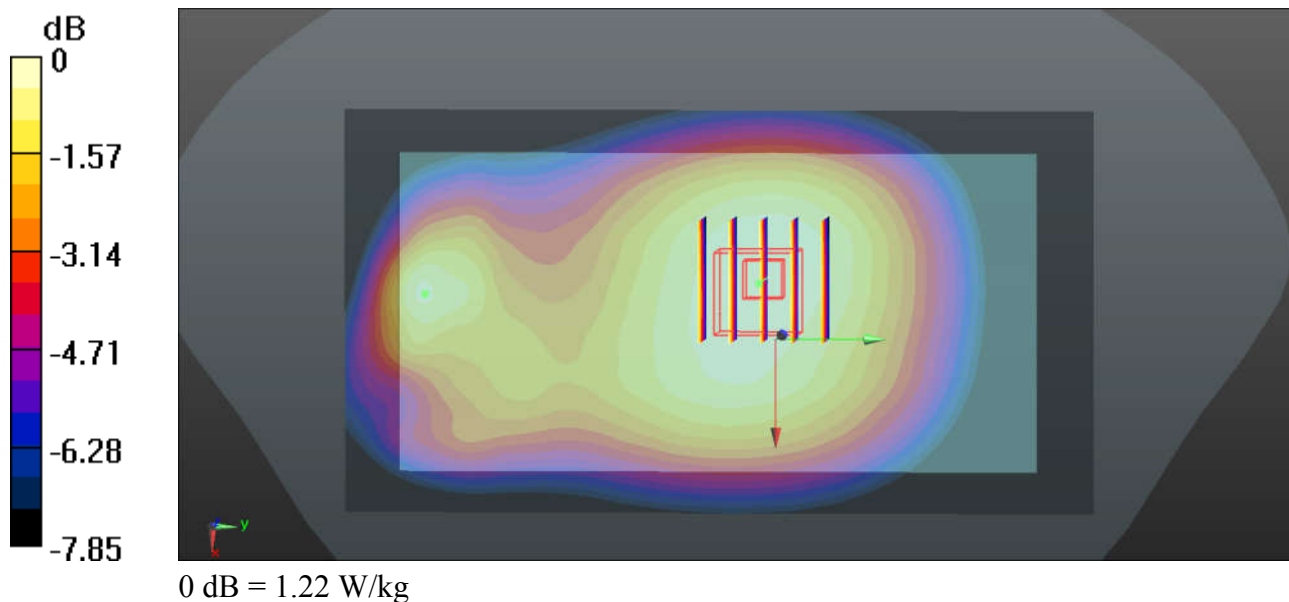
Communication System: UID 0, GPRS/EDGE12 (0); Frequency: 848.8 MHz; Duty Cycle: 1:2.08
 Medium: MSL_835_170619 Medium parameters used: $f = 848.8 \text{ MHz}$; $\sigma = 1.026 \text{ S/m}$; $\epsilon_r = 56.11$; $\rho = 1000 \text{ kg/m}^3$
 Ambient Temperature : 23.5 °C; Liquid Temperature : 22.5 °C

DASY5 Configuration:

- Probe: EX3DV4 - SN3819; ConvF(9.53, 9.53, 9.53); Calibrated: 2016.11.28;
- Sensor-Surface: 2mm (Mechanical Surface Detection)
- Electronics: DAE4 Sn1303; Calibrated: 2016.11.22
- Phantom: SAM2; Type: QD000P40CD; Serial: TP:1671
- Measurement SW: DASY52, Version 52.8 (8); SEMCAD X Version 14.6.10 (7331)

Ch251/Area Scan (71x131x1): Interpolated grid: $dx=15\text{mm}$, $dy=15\text{mm}$
 Maximum value of SAR (interpolated) = 1.22 W/kg

Ch251/Zoom Scan (5x5x7)/Cube 0: Measurement grid: $dx=8\text{mm}$, $dy=8\text{mm}$, $dz=5\text{mm}$
 Reference Value = 3.750 V/m; Power Drift = 0.08 dB
 Peak SAR (extrapolated) = 1.32 W/kg
SAR(1 g) = 1.05 W/kg; SAR(10 g) = 0.807 W/kg
 Maximum value of SAR (measured) = 1.20 W/kg



16_GSM1900_GPRS (4 Tx slots)_Back_10mm_Ch512

Communication System: UID 0, GPRS/EDGE12 (0); Frequency: 1850.2 MHz; Duty Cycle: 1:2.08
 Medium: MSL_1900_170617 Medium parameters used: $f = 1850.2$ MHz; $\sigma = 1.52$ S/m; $\epsilon_r = 54.398$;

$\rho = 1000$ kg/m³

Ambient Temperature : 23.4 °C; Liquid Temperature : 22.5 °C

DASY5 Configuration:

- Probe: EX3DV4 - SN3819; ConvF(7.77, 7.77, 7.77); Calibrated: 2016.11.28;
- Sensor-Surface: 2mm (Mechanical Surface Detection)
- Electronics: DAE4 Sn1303; Calibrated: 2016.11.22
- Phantom: SAM2; Type: QD000P40CD; Serial: TP:1671
- Measurement SW: DASY52, Version 52.8 (8); SEMCAD X Version 14.6.10 (7331)

Ch512/Area Scan (81x131x1): Interpolated grid: dx=15mm, dy=15mm

Maximum value of SAR (interpolated) = 0.723 W/kg

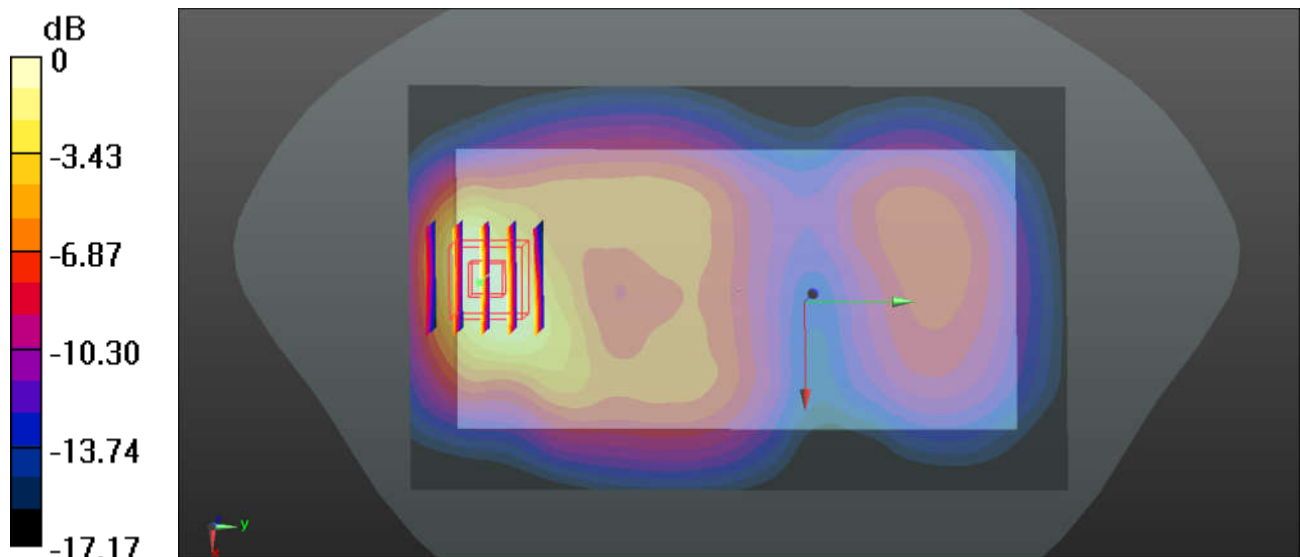
Ch512/Zoom Scan (5x5x7)/Cube 0: Measurement grid: dx=8mm, dy=8mm, dz=5mm

Reference Value = 2.068 V/m; Power Drift = -0.08 dB

Peak SAR (extrapolated) = 0.994 W/kg

SAR(1 g) = 0.592 W/kg; SAR(10 g) = 0.320 W/kg

Maximum value of SAR (measured) = 0.793 W/kg



0 dB = 0.723 W/kg

17_WCDMA Band V_RMC 12.2Kbps_Back_10mm_Ch4182

Communication System: UID 0, UMTS (0); Frequency: 836.4 MHz; Duty Cycle: 1:1

Medium: MSL_835_170619 Medium parameters used: $f = 836.4$ MHz; $\sigma = 1.013$ S/m; $\epsilon_r = 56.228$; $\rho = 1000$ kg/m³

Ambient Temperature : 23.5 °C; Liquid Temperature : 22.5 °C

DASY5 Configuration:

- Probe: EX3DV4 - SN3819; ConvF(9.53, 9.53, 9.53); Calibrated: 2016.11.28;
- Sensor-Surface: 2mm (Mechanical Surface Detection)
- Electronics: DAE4 Sn1303; Calibrated: 2016.11.22
- Phantom: SAM2; Type: QD000P40CD; Serial: TP:1671
- Measurement SW: DASY52, Version 52.8 (8); SEMCAD X Version 14.6.10 (7331)

Ch4182/Area Scan (71x131x1): Interpolated grid: dx=15mm, dy=15mm

Maximum value of SAR (interpolated) = 0.442 W/kg

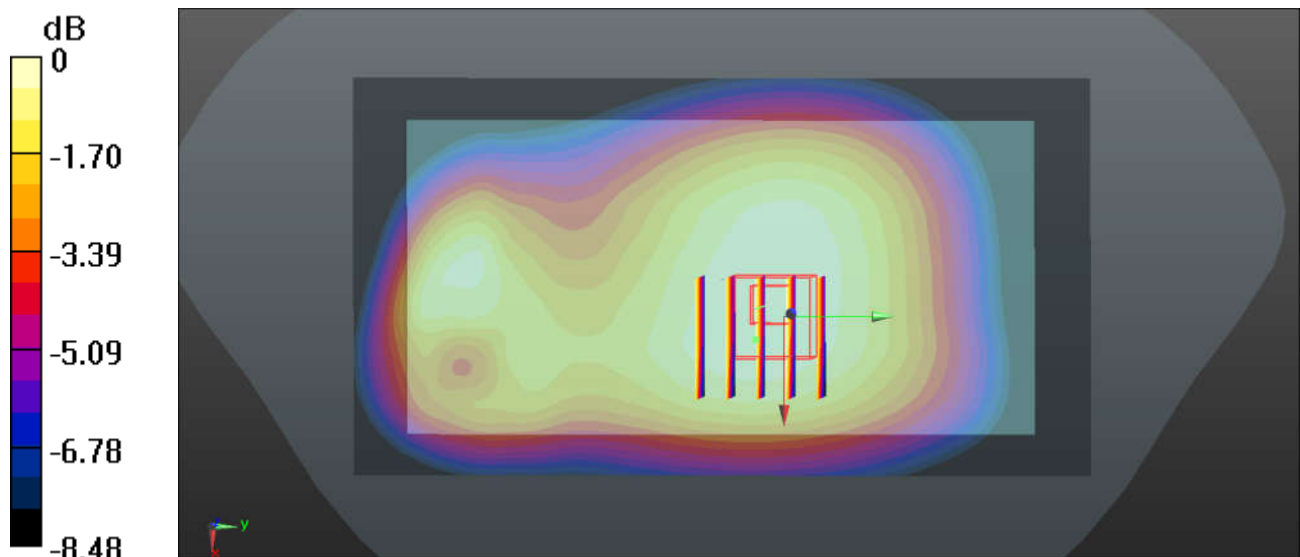
Ch4182/Zoom Scan (5x5x7)/Cube 0: Measurement grid: dx=8mm, dy=8mm, dz=5mm

Reference Value = 2.100 V/m; Power Drift = 0.07 dB

Peak SAR (extrapolated) = 0.484 W/kg

SAR(1 g) = 0.386 W/kg; SAR(10 g) = 0.296 W/kg

Maximum value of SAR (measured) = 0.440 W/kg



0 dB = 0.442 W/kg

18_WCDMA Band IV_RMC 12.2Kbps_Bottom Side_10mm_Ch1312

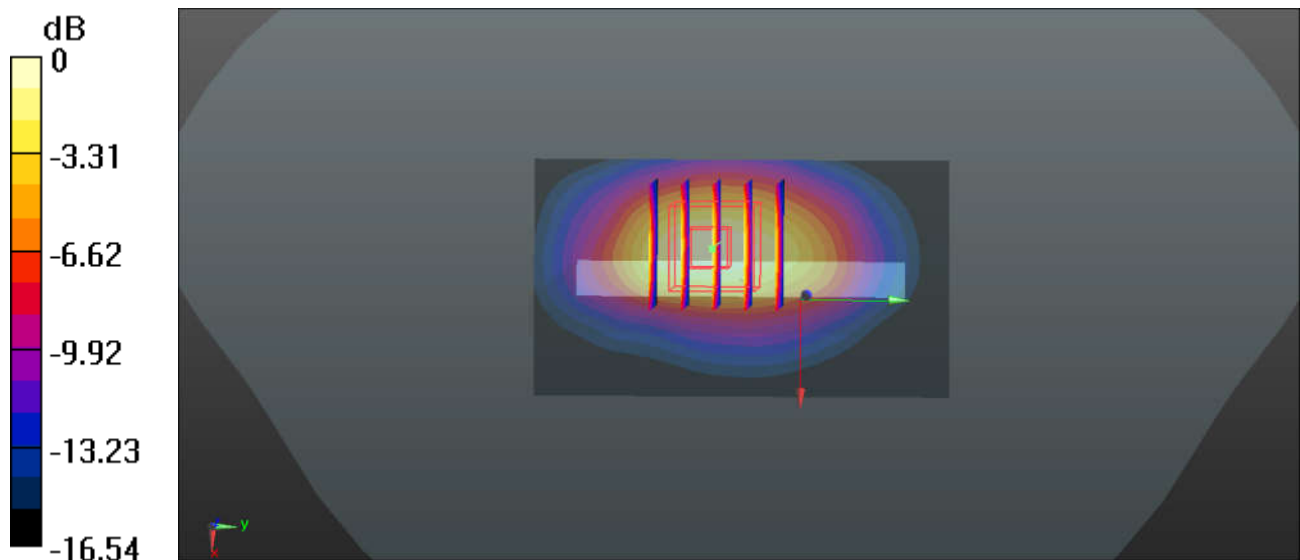
Communication System: UID 0, UMTS (0); Frequency: 1712.4 MHz; Duty Cycle: 1:1
 Medium: MSL_1800_170621 Medium parameters used: $f = 1712.4$ MHz; $\sigma = 1.469$ S/m; $\epsilon_r = 54.269$;
 $\rho = 1000$ kg/m³
 Ambient Temperature : 23.6 °C; Liquid Temperature : 22.6 °C

DASY5 Configuration:

- Probe: EX3DV4 - SN3819; ConvF(8.08, 8.08, 8.08); Calibrated: 2016.11.28;
- Sensor-Surface: 2mm (Mechanical Surface Detection)
- Electronics: DAE4 Sn1303; Calibrated: 2016.11.22
- Phantom: SAM2; Type: QD000P40CD; Serial: TP:1671
- Measurement SW: DASY52, Version 52.8 (8); SEMCAD X Version 14.6.10 (7331)

Ch1312/Area Scan (41x71x1): Interpolated grid: dx=15mm, dy=15mm
 Maximum value of SAR (interpolated) = 1.41 W/kg

Ch1312/Zoom Scan (5x5x7)/Cube 0: Measurement grid: dx=8mm, dy=8mm, dz=5mm
 Reference Value = 3.105 V/m; Power Drift = 0.02 dB
 Peak SAR (extrapolated) = 1.58 W/kg
SAR(1 g) = 0.975 W/kg; SAR(10 g) = 0.536 W/kg
 Maximum value of SAR (measured) = 1.31 W/kg



0 dB = 1.41 W/kg

19_WCDMA Band II_RMC 12.2Kbps_Back_10mm_Ch9262

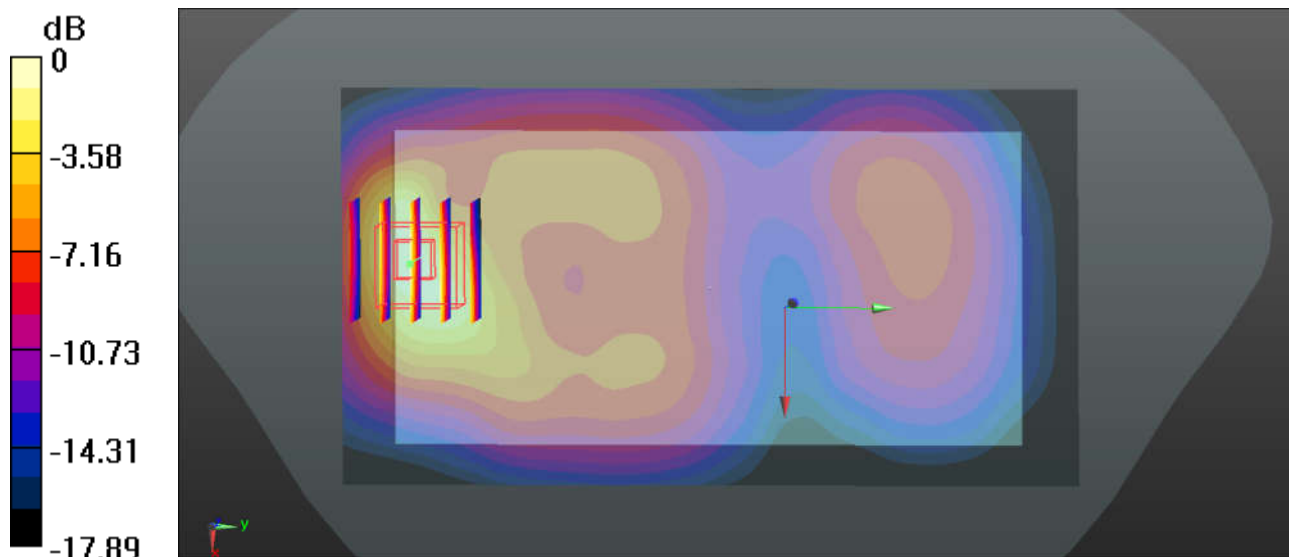
Communication System: UID 0, UMTS (0); Frequency: 1852.4 MHz; Duty Cycle: 1:1
 Medium: MSL_1900_170617 Medium parameters used: $f = 1852.4 \text{ MHz}$; $\sigma = 1.523 \text{ S/m}$; $\epsilon_r = 54.392$;
 $\rho = 1000 \text{ kg/m}^3$
 Ambient Temperature : 23.4 °C ; Liquid Temperature : 22.5 °C

DASY5 Configuration:

- Probe: EX3DV4 - SN3819; ConvF(7.77, 7.77, 7.77); Calibrated: 2016.11.28;
- Sensor-Surface: 2mm (Mechanical Surface Detection)
- Electronics: DAE4 Sn1303; Calibrated: 2016.11.22
- Phantom: SAM2; Type: QD000P40CD; Serial: TP:1671
- Measurement SW: DASY52, Version 52.8 (8); SEMCAD X Version 14.6.10 (7331)

Ch9262/Area Scan (71x131x1): Interpolated grid: dx=15mm, dy=15mm
 Maximum value of SAR (interpolated) = 1.28 W/kg

Ch9262/Zoom Scan (5x5x7)/Cube 0: Measurement grid: dx=8mm, dy=8mm, dz=5mm
 Reference Value = 3.264 V/m; Power Drift = 0.03 dB
 Peak SAR (extrapolated) = 1.55 W/kg
SAR(1 g) = 0.907 W/kg; SAR(10 g) = 0.494 W/kg
 Maximum value of SAR (measured) = 1.26 W/kg



0 dB = 1.28 W/kg

20_LTE Band 12_10M_QPSK_1RB_49Offset_Left Side_10mm_Ch23095

Communication System: UID 0, LTE (0); Frequency: 707.5 MHz; Duty Cycle: 1:1
Medium: MSL_750_170620 Medium parameters used: $f = 707.5$ MHz; $\sigma = 0.939$ S/m; $\epsilon_r = 55.571$;
 $\rho = 1000$ kg/m³

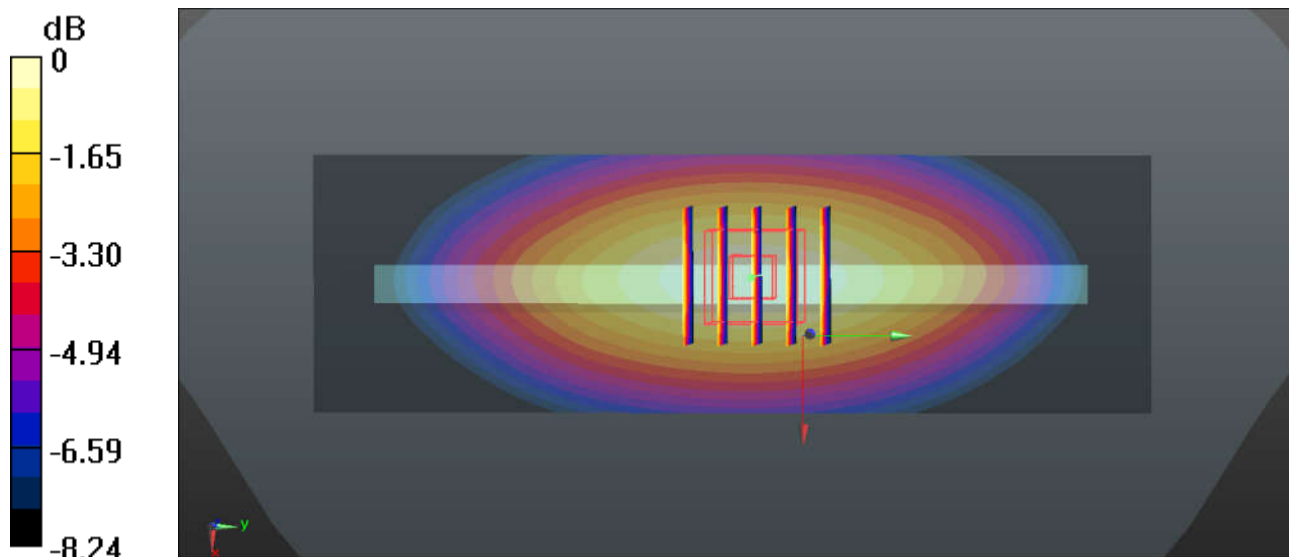
Ambient Temperature : 23.5 °C; Liquid Temperature : 22.7 °C

DASY5 Configuration:

- Probe: EX3DV4 - SN3819; ConvF(9.86, 9.86, 9.86); Calibrated: 2016.11.28;
- Sensor-Surface: 2mm (Mechanical Surface Detection)
- Electronics: DAE4 Sn1303; Calibrated: 2016.11.22
- Phantom: SAM2; Type: QD000P40CD; Serial: TP:1671
- Measurement SW: DASY52, Version 52.8 (8); SEMCAD X Version 14.6.10 (7331)

Ch23095/Area Scan (41x131x1): Interpolated grid: dx=15mm, dy=15mm
Maximum value of SAR (interpolated) = 0.354 W/kg

Ch23095/Zoom Scan (5x5x7)/Cube 0: Measurement grid: dx=8mm, dy=8mm, dz=5mm
Reference Value = 3.037 V/m; Power Drift = -0.10 dB
Peak SAR (extrapolated) = 0.405 W/kg
SAR(1 g) = 0.292 W/kg; SAR(10 g) = 0.208 W/kg
Maximum value of SAR (measured) = 0.354 W/kg



0 dB = 0.354 W/kg

21_LTE Band 5_10M_QPSK_1RB_49Offset_Back_10mm_Ch20525

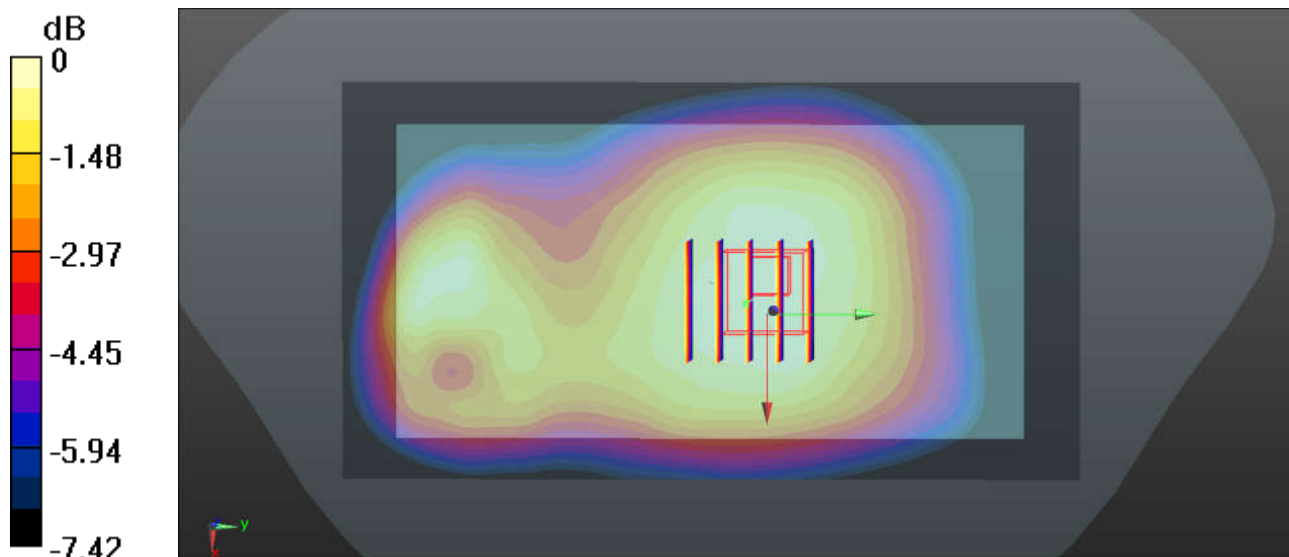
Communication System: UID 0, LTE (0); Frequency: 836.5 MHz; Duty Cycle: 1:1
Medium: MSL_835_170619 Medium parameters used: $f = 836.5$ MHz; $\sigma = 1.013$ S/m; $\epsilon_r = 56.227$; $\rho = 1000$ kg/m³
Ambient Temperature : 23.5 °C; Liquid Temperature : 22.5 °C

DASY5 Configuration:

- Probe: EX3DV4 - SN3819; ConvF(9.53, 9.53, 9.53); Calibrated: 2016.11.28;
- Sensor-Surface: 2mm (Mechanical Surface Detection)
- Electronics: DAE4 Sn1303; Calibrated: 2016.11.22
- Phantom: SAM2; Type: QD000P40CD; Serial: TP:1671
- Measurement SW: DASY52, Version 52.8 (8); SEMCAD X Version 14.6.10 (7331)

Ch20525/Area Scan (71x131x1): Interpolated grid: dx=15mm, dy=15mm
Maximum value of SAR (interpolated) = 0.384 W/kg

Ch20525/Zoom Scan (5x5x7)/Cube 0: Measurement grid: dx=8mm, dy=8mm, dz=5mm
Reference Value = 1.989 V/m; Power Drift = 0.09 dB
Peak SAR (extrapolated) = 0.421 W/kg
SAR(1 g) = 0.329 W/kg; SAR(10 g) = 0.257 W/kg
Maximum value of SAR (measured) = 0.386 W/kg



0 dB = 0.384 W/kg

22_LTE Band 4_20M_QPSK_1RB_49Offset_Back_10mm_Ch20175

Communication System: UID 0, LTE (0); Frequency: 1732.5 MHz; Duty Cycle: 1:1
Medium: MSL_1800_170621 Medium parameters used: $f = 1732.5$ MHz; $\sigma = 1.496$ S/m; $\epsilon_r = 53.649$;
 $\rho = 1000$ kg/m³
Ambient Temperature : 23.6 °C; Liquid Temperature : 22.6 °C

DASY5 Configuration:

- Probe: EX3DV4 - SN3819; ConvF(8.08, 8.08, 8.08); Calibrated: 2016.11.28;
- Sensor-Surface: 2mm (Mechanical Surface Detection)
- Electronics: DAE4 Sn1303; Calibrated: 2016.11.22
- Phantom: SAM2; Type: QD000P40CD; Serial: TP:1671
- Measurement SW: DASY52, Version 52.8 (8); SEMCAD X Version 14.6.10 (7331)

Ch20175/Area Scan (81x131x1): Interpolated grid: dx=15mm, dy=15mm

Maximum value of SAR (interpolated) = 1.43 W/kg

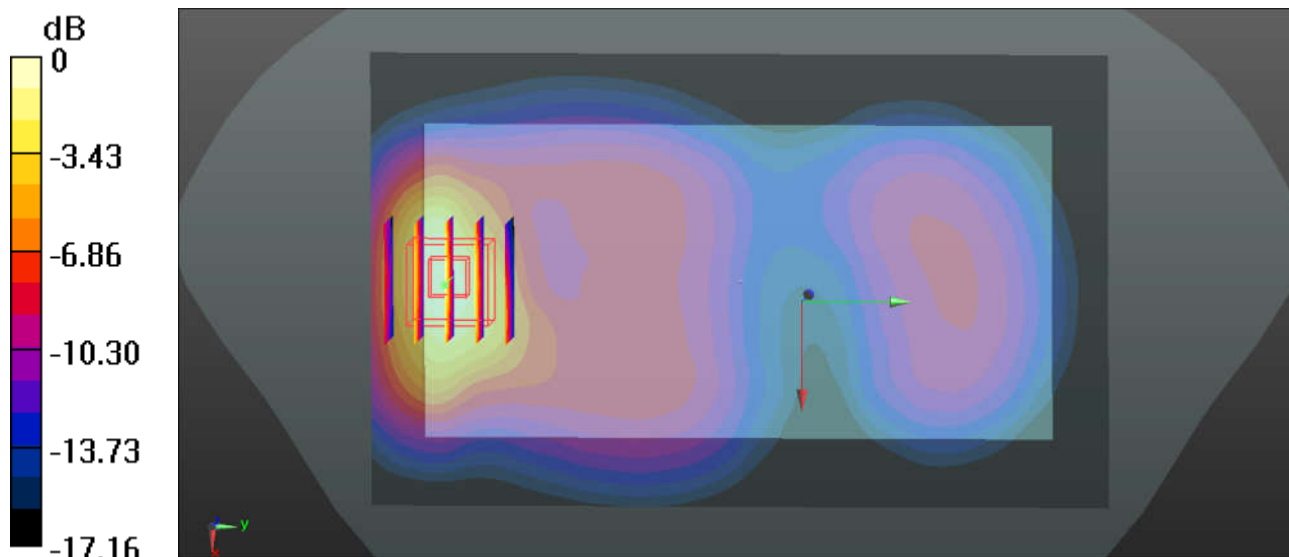
Ch20175/Zoom Scan (5x5x7)/Cube 0: Measurement grid: dx=8mm, dy=8mm, dz=5mm

Reference Value = 2.302 V/m; Power Drift = 0.07 dB

Peak SAR (extrapolated) = 1.73 W/kg

SAR(1 g) = 1.05 W/kg; SAR(10 g) = 0.569 W/kg

Maximum value of SAR (measured) = 1.38 W/kg



23_LTE Band 66_20M_QPSK_1RB_49Offset_Back_10mm_Ch132072

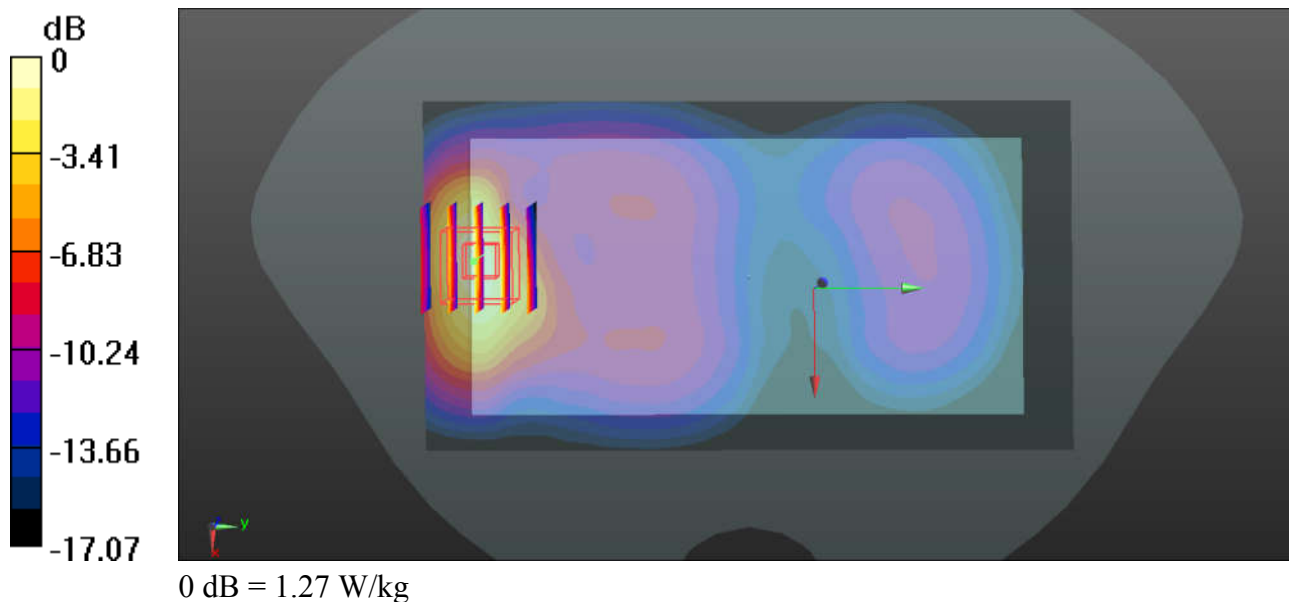
Communication System: UID 0, LTE (0); Frequency: 1720 MHz; Duty Cycle: 1:1
Medium: MSL_1800_170621 Medium parameters used: $f = 1720$ MHz; $\sigma = 1.477$ S/m; $\epsilon_r = 54.025$; $\rho = 1000$ kg/m³
Ambient Temperature : 23.6 °C; Liquid Temperature : 22.6 °C

DASY5 Configuration:

- Probe: EX3DV4 - SN3819; ConvF(8.08, 8.08, 8.08); Calibrated: 2016.11.28;
- Sensor-Surface: 2mm (Mechanical Surface Detection)
- Electronics: DAE4 Sn1303; Calibrated: 2016.11.22
- Phantom: SAM2; Type: QD000P40CD; Serial: TP:1671
- Measurement SW: DASY52, Version 52.8 (8); SEMCAD X Version 14.6.10 (7331)

Ch132072/Area Scan (71x131x1): Interpolated grid: dx=15mm, dy=15mm
Maximum value of SAR (interpolated) = 1.27 W/kg

Ch132072/Zoom Scan (5x5x7)/Cube 0: Measurement grid: dx=8mm, dy=8mm, dz=5mm
Reference Value = 3.588 V/m; Power Drift = -0.08 dB
Peak SAR (extrapolated) = 1.52 W/kg
SAR(1 g) = 0.925 W/kg; SAR(10 g) = 0.506 W/kg
Maximum value of SAR (measured) = 1.22 W/kg



24_LTE Band 2_20M_QPSK_1RB_49Offset_Bottom Side_10mm_Ch18700

Communication System: UID 0, LTE (0); Frequency: 1860 MHz; Duty Cycle: 1:1

Medium: MSL_1900_170617 Medium parameters used: $f = 1860$ MHz; $\sigma = 1.532$ S/m; $\epsilon_r = 54.365$; $\rho = 1000$ kg/m³

Ambient Temperature : 23.4 °C; Liquid Temperature : 22.5 °C

DASY5 Configuration:

- Probe: EX3DV4 - SN3819; ConvF(7.77, 7.77, 7.77); Calibrated: 2016.11.28;
- Sensor-Surface: 2mm (Mechanical Surface Detection)
- Electronics: DAE4 Sn1303; Calibrated: 2016.11.22
- Phantom: SAM2; Type: QD000P40CD; Serial: TP:1671
- Measurement SW: DASY52, Version 52.8 (8); SEMCAD X Version 14.6.10 (7331)

Ch18700/Area Scan (41x71x1): Interpolated grid: dx=15mm, dy=15mm

Maximum value of SAR (interpolated) = 1.48 W/kg

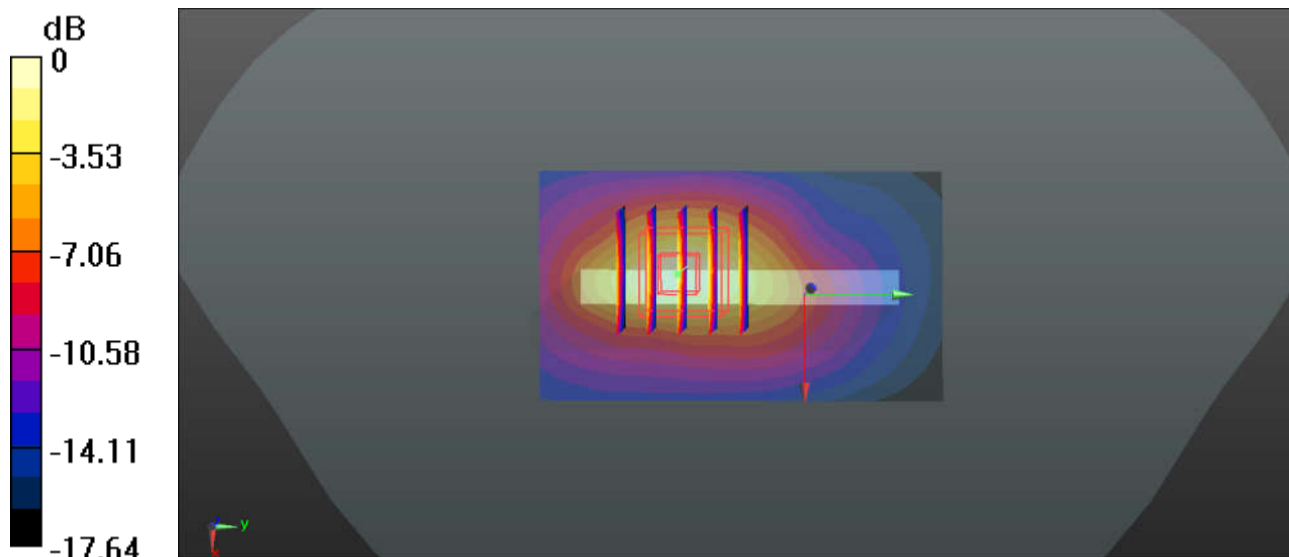
Ch18700/Zoom Scan (5x5x7)/Cube 0: Measurement grid: dx=8mm, dy=8mm, dz=5mm

Reference Value = 4.271 V/m; Power Drift = -0.08 dB

Peak SAR (extrapolated) = 1.71 W/kg

SAR(1 g) = 0.978 W/kg; SAR(10 g) = 0.523 W/kg

Maximum value of SAR (measured) = 1.40 W/kg



0 dB = 1.48 W/kg

25_WLAN2.4GHz_802.11b 1Mbps_Front_10mm_Ch1

Communication System: UID 0, WIFI (0); Frequency: 2412 MHz; Duty Cycle: 1:1.025
Medium: MSL_2450_170625 Medium parameters used: $f = 2412$ MHz; $\sigma = 1.906$ S/m; $\epsilon_r = 54.182$; $\rho = 1000$ kg/m³
Ambient Temperature : 23.6 °C; Liquid Temperature : 22.8 °C

DASY5 Configuration:

- Probe: EX3DV4 - SN3819; ConvF(7.34, 7.34, 7.34); Calibrated: 2016.11.28;
- Sensor-Surface: 2mm (Mechanical Surface Detection)
- Electronics: DAE4 Sn1303; Calibrated: 2016.11.22
- Phantom: SAM2; Type: QD000P40CD; Serial: TP:1671
- Measurement SW: DASY52, Version 52.8 (8); SEMCAD X Version 14.6.10 (7331)

Ch1/Area Scan (91x161x1): Interpolated grid: dx=12mm, dy=12mm

Maximum value of SAR (interpolated) = 0.413 W/kg

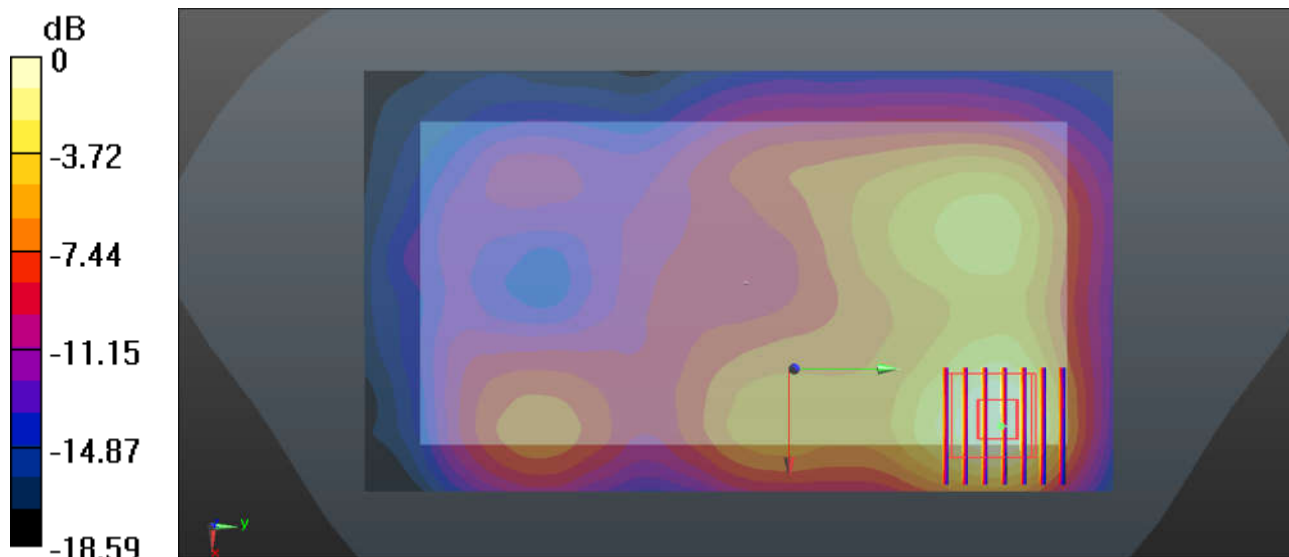
Ch1/Zoom Scan (7x7x7)/Cube 0: Measurement grid: dx=5mm, dy=5mm, dz=5mm

Reference Value = 1.546 V/m; Power Drift = -0.05 dB

Peak SAR (extrapolated) = 0.520 W/kg

SAR(1 g) = 0.278 W/kg; SAR(10 g) = 0.146 W/kg

Maximum value of SAR (measured) = 0.393 W/kg



0 dB = 0.393 W/kg

26_WLAN5.2GHz_802.11a 6Mbps_Top Side_10mm_Ch36

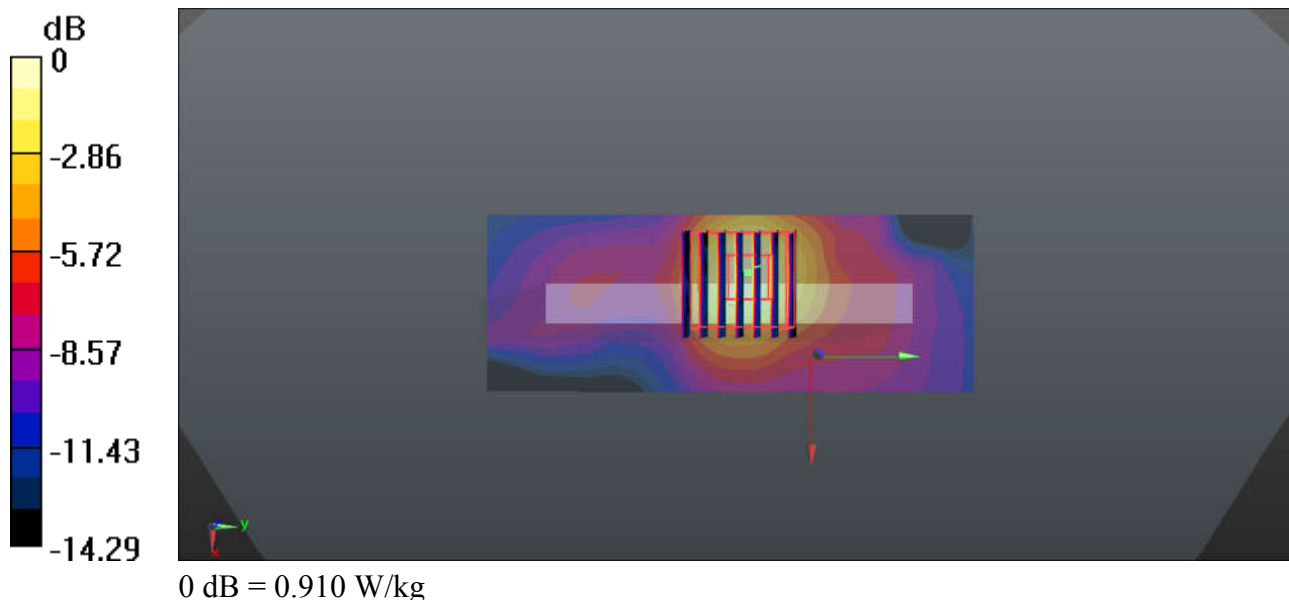
Communication System: UID 0, WIFI (0); Frequency: 5180 MHz; Duty Cycle: 1:1.144
Medium: MSL_5250_170624 Medium parameters used: $f = 5180$ MHz; $\sigma = 5.219$ S/m; $\epsilon_r = 51.148$; $\rho = 1000$ kg/m³
Ambient Temperature : 23.4 °C; Liquid Temperature : 22.8 °C

DASY5 Configuration:

- Probe: EX3DV4 - SN3819; ConvF(4.5, 4.5, 4.5); Calibrated: 2016.11.28;
- Sensor-Surface: 1.4mm (Mechanical Surface Detection)
- Electronics: DAE4 Sn1303; Calibrated: 2016.11.22
- Phantom: SAM2; Type: QD000P40CD; Serial: TP:1671
- Measurement SW: DASY52, Version 52.8 (8); SEMCAD X Version 14.6.10 (7331)

Ch36/Area Scan (41x111x1): Interpolated grid: dx=10mm, dy=10mm
Maximum value of SAR (interpolated) = 0.910 W/kg

Ch36/Zoom Scan (7x7x7)/Cube 0: Measurement grid: dx=4mm, dy=4mm, dz=1.4mm
Reference Value = 3.156 V/m; Power Drift = -0.03 dB
Peak SAR (extrapolated) = 1.47 W/kg
SAR(1 g) = 0.424 W/kg; SAR(10 g) = 0.172 W/kg
Maximum value of SAR (measured) = 0.898 W/kg



27_WLAN5.8GHz_802.11a 6Mbps_Top Side_10mm_Ch165

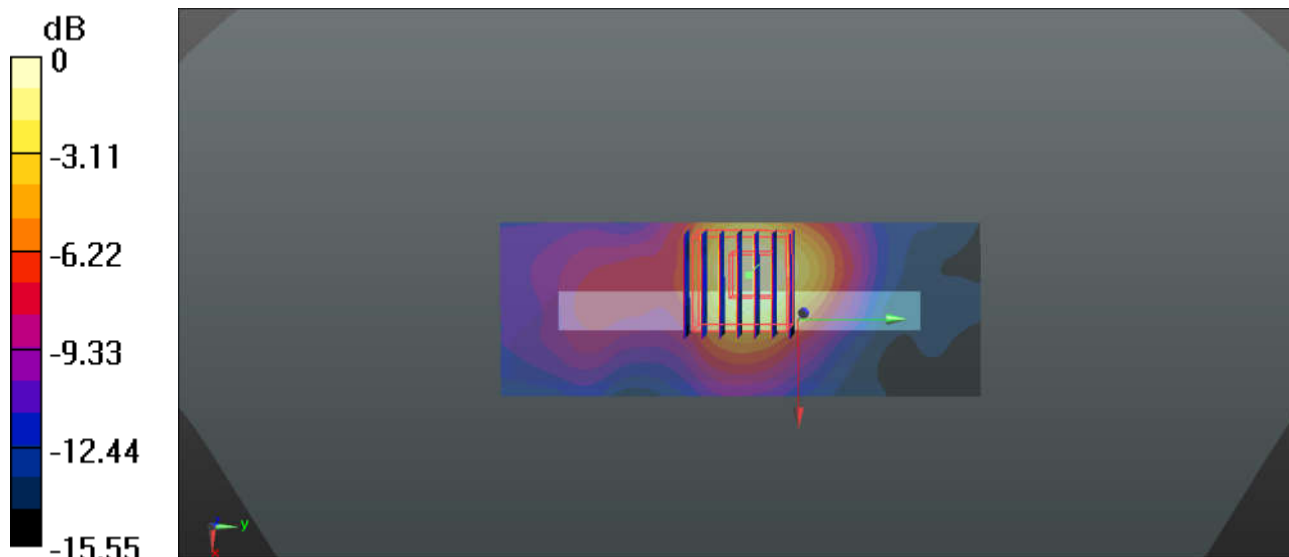
Communication System: UID 0, WIFI (0); Frequency: 5825 MHz; Duty Cycle: 1:1.144
Medium: MSL_5750_170624 Medium parameters used: $f = 5825$ MHz; $\sigma = 6.166$ S/m; $\epsilon_r = 49.863$; $\rho = 1000$ kg/m³
Ambient Temperature : 23.5 °C; Liquid Temperature : 22.9 °C

DASY5 Configuration:

- Probe: EX3DV4 - SN3819; ConvF(4.13, 4.13, 4.13); Calibrated: 2016.11.28;
- Sensor-Surface: 1.4mm (Mechanical Surface Detection)
- Electronics: DAE4 Sn1303; Calibrated: 2016.11.22
- Phantom: SAM2; Type: QD000P40CD; Serial: TP:1671
- Measurement SW: DASY52, Version 52.8 (8); SEMCAD X Version 14.6.10 (7331)

Ch165/Area Scan (41x111x1): Interpolated grid: dx=10mm, dy=10mm
Maximum value of SAR (interpolated) = 0.774 W/kg

Ch165/Zoom Scan (7x7x7)/Cube 0: Measurement grid: dx=4mm, dy=4mm, dz=1.4mm
Reference Value = 2.402 V/m; Power Drift = -0.03 dB
Peak SAR (extrapolated) = 1.44 W/kg
SAR(1 g) = 0.348 W/kg; SAR(10 g) = 0.136 W/kg
Maximum value of SAR (measured) = 0.777 W/kg



0 dB = 0.774 W/kg

28_GSM850_GPRS (4 Tx slots)_Back_15mm_Ch251

Communication System: UID 0, GPRS/EDGE12 (0); Frequency: 848.8 MHz; Duty Cycle: 1:2.08
 Medium: MSL_835_170619 Medium parameters used: $f = 848.8$ MHz; $\sigma = 1.026$ S/m; $\epsilon_r = 56.11$;

$\rho = 1000$ kg/m³

Ambient Temperature : 23.5 °C; Liquid Temperature : 22.5 °C

DASY5 Configuration:

- Probe: EX3DV4 - SN3819; ConvF(9.53, 9.53, 9.53); Calibrated: 2016.11.28;
- Sensor-Surface: 2mm (Mechanical Surface Detection)
- Electronics: DAE4 Sn1303; Calibrated: 2016.11.22
- Phantom: SAM2; Type: QD000P40CD; Serial: TP:1671
- Measurement SW: DASY52, Version 52.8 (8); SEMCAD X Version 14.6.10 (7331)

Ch251/Area Scan (71x131x1): Interpolated grid: dx=15mm, dy=15mm

Maximum value of SAR (interpolated) = 0.982 W/kg

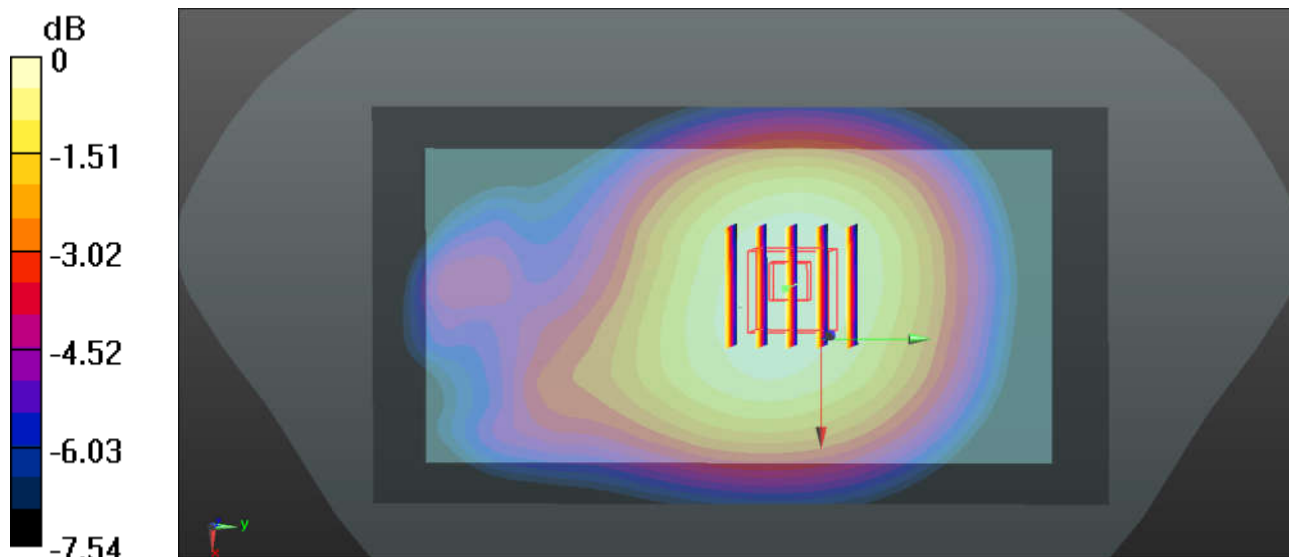
Ch251/Zoom Scan (5x5x7)/Cube 0: Measurement grid: dx=8mm, dy=8mm, dz=5mm

Reference Value = 3.260 V/m; Power Drift = 0.05 dB

Peak SAR (extrapolated) = 1.07 W/kg

SAR(1 g) = 0.853 W/kg; SAR(10 g) = 0.658 W/kg

Maximum value of SAR (measured) = 0.978 W/kg



0 dB = 0.982 W/kg

29_GSM1900_GPRS (4 Tx slots)_Back_15mm_Ch512

Communication System: UID 0, GPRS/EDGE12 (0); Frequency: 1850.2 MHz; Duty Cycle: 1:2.08
 Medium: MSL_1900_170617 Medium parameters used: $f = 1850.2 \text{ MHz}$; $\sigma = 1.52 \text{ S/m}$; $\epsilon_r = 54.398$;

$\rho = 1000 \text{ kg/m}^3$

Ambient Temperature : $23.4 \text{ }^\circ\text{C}$; Liquid Temperature : $22.5 \text{ }^\circ\text{C}$

DASY5 Configuration:

- Probe: EX3DV4 - SN3819; ConvF(7.77, 7.77, 7.77); Calibrated: 2016.11.28;
- Sensor-Surface: 2mm (Mechanical Surface Detection)
- Electronics: DAE4 Sn1303; Calibrated: 2016.11.22
- Phantom: SAM2; Type: QD000P40CD; Serial: TP:1671
- Measurement SW: DASY52, Version 52.8 (8); SEMCAD X Version 14.6.10 (7331)

Ch512/Area Scan (81x131x1): Interpolated grid: $dx=15\text{mm}$, $dy=15\text{mm}$

Maximum value of SAR (interpolated) = 0.370 W/kg

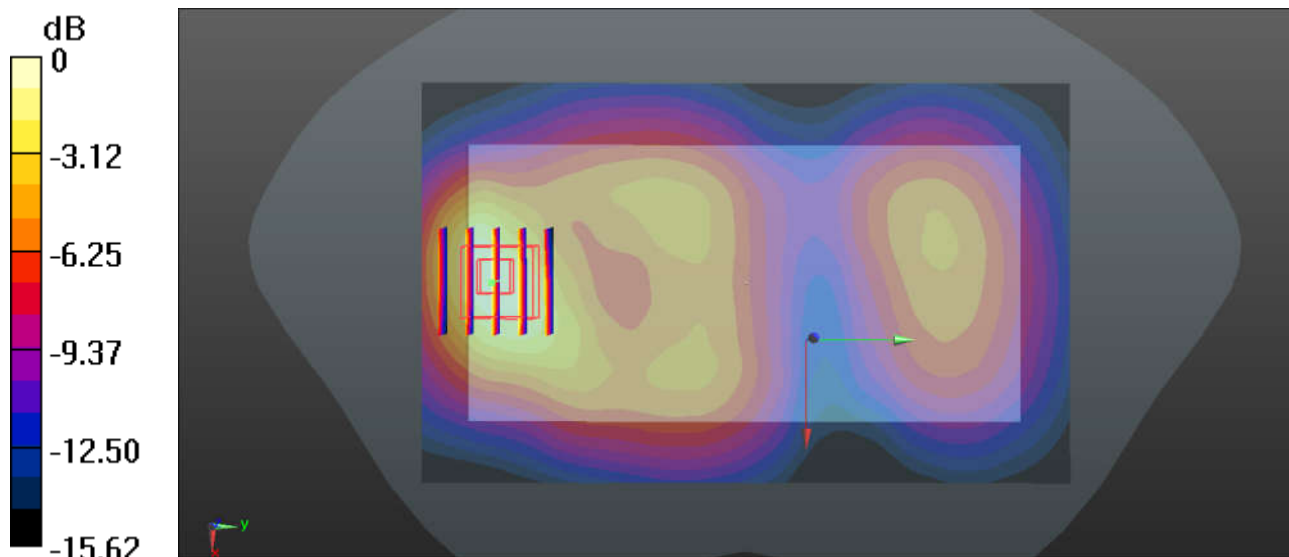
Ch512/Zoom Scan (5x5x7)/Cube 0: Measurement grid: $dx=8\text{mm}$, $dy=8\text{mm}$, $dz=5\text{mm}$

Reference Value = 2.241 V/m ; Power Drift = 0.04 dB

Peak SAR (extrapolated) = 0.458 W/kg

SAR(1 g) = 0.286 W/kg ; SAR(10 g) = 0.164 W/kg

Maximum value of SAR (measured) = 0.375 W/kg



0 dB = 0.370 W/kg

30_WCDMA Band V_RMC 12.2Kbps_Back_15mm_Ch4182

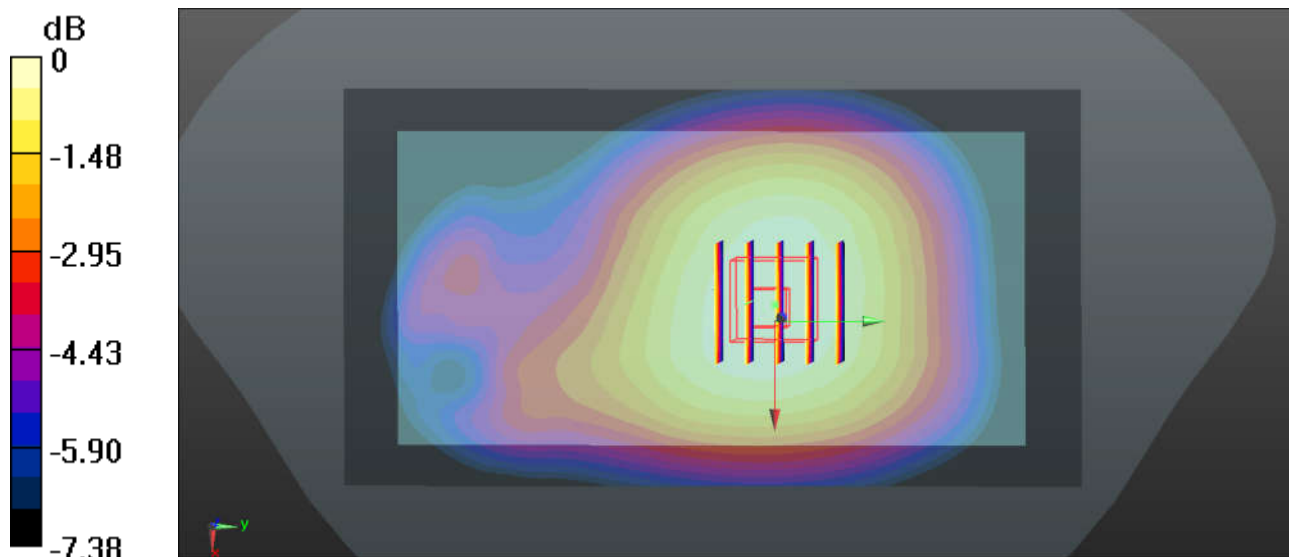
Communication System: UID 0, UMTS (0); Frequency: 836.4 MHz; Duty Cycle: 1:1
Medium: MSL_835_170619 Medium parameters used: $f = 836.4$ MHz; $\sigma = 1.013$ S/m; $\epsilon_r = 56.228$; $\rho = 1000$ kg/m³
Ambient Temperature : 23.5 °C; Liquid Temperature : 22.5 °C

DASY5 Configuration:

- Probe: EX3DV4 - SN3819; ConvF(9.53, 9.53, 9.53); Calibrated: 2016.11.28;
- Sensor-Surface: 2mm (Mechanical Surface Detection)
- Electronics: DAE4 Sn1303; Calibrated: 2016.11.22
- Phantom: SAM2; Type: QD000P40CD; Serial: TP:1671
- Measurement SW: DASY52, Version 52.8 (8); SEMCAD X Version 14.6.10 (7331)

Ch4182/Area Scan (71x131x1): Interpolated grid: dx=15mm, dy=15mm
Maximum value of SAR (interpolated) = 0.382 W/kg

Ch4182/Zoom Scan (5x5x7)/Cube 0: Measurement grid: dx=8mm, dy=8mm, dz=5mm
Reference Value = 2.181 V/m; Power Drift = 0.05 dB
Peak SAR (extrapolated) = 0.418 W/kg
SAR(1 g) = 0.330 W/kg; SAR(10 g) = 0.255 W/kg
Maximum value of SAR (measured) = 0.378 W/kg



0 dB = 0.382 W/kg

31_WCDMA Band IV_RMC 12.2Kbps_Back_15mm_Ch1513

Communication System: UID 0, UMTS (0); Frequency: 1752.6 MHz; Duty Cycle: 1:1
Medium: MSL_1800_170621 Medium parameters used: $f = 1752.6$ MHz; $\sigma = 1.517$ S/m; $\epsilon_r = 53.568$;
 $\rho = 1000$ kg/m³

Ambient Temperature : 23.6 °C ; Liquid Temperature : 22.6 °C

DASY5 Configuration:

- Probe: EX3DV4 - SN3819; ConvF(8.08, 8.08, 8.08); Calibrated: 2016.11.28;
- Sensor-Surface: 2mm (Mechanical Surface Detection)
- Electronics: DAE4 Sn1303; Calibrated: 2016.11.22
- Phantom: SAM2; Type: QD000P40CD; Serial: TP:1671
- Measurement SW: DASY52, Version 52.8 (8); SEMCAD X Version 14.6.10 (7331)

Ch1513/Area Scan (81x131x1): Interpolated grid: dx=15mm, dy=15mm

Maximum value of SAR (interpolated) = 0.792 W/kg

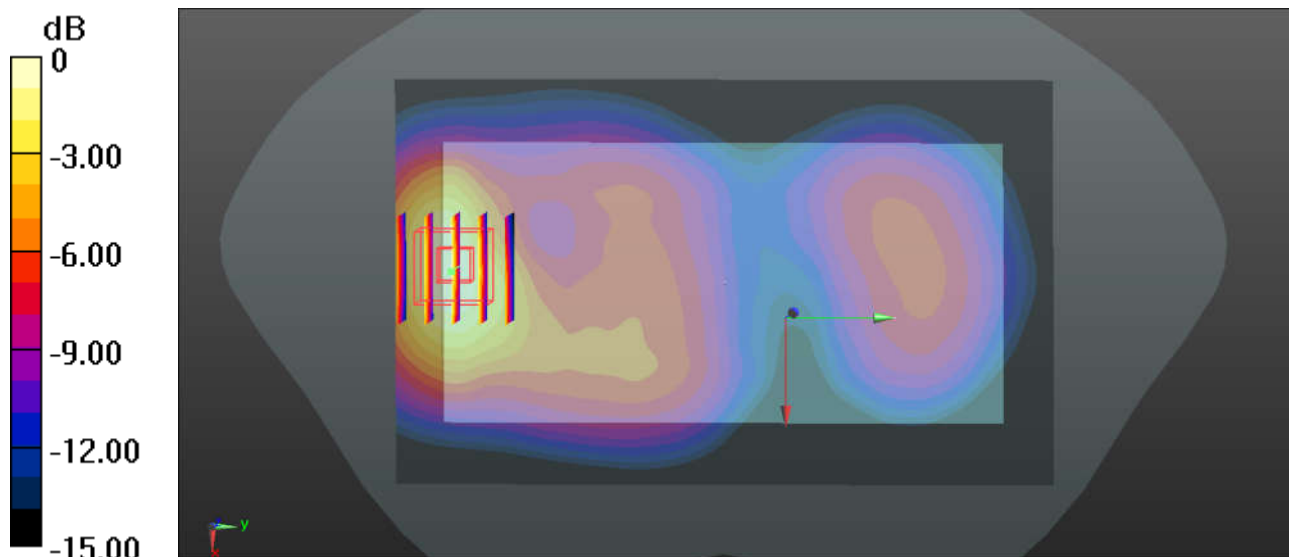
Ch1513/Zoom Scan (5x5x7)/Cube 0: Measurement grid: dx=8mm, dy=8mm, dz=5mm

Reference Value = 0.9020 V/m; Power Drift = 0.02 dB

Peak SAR (extrapolated) = 0.938 W/kg

SAR(1 g) = 0.621 W/kg; SAR(10 g) = 0.372 W/kg

Maximum value of SAR (measured) = 0.796 W/kg



0 dB = 0.792 W/kg

32_WCDMA Band II_RMC 12.2Kbps_Back_15mm_Ch9400

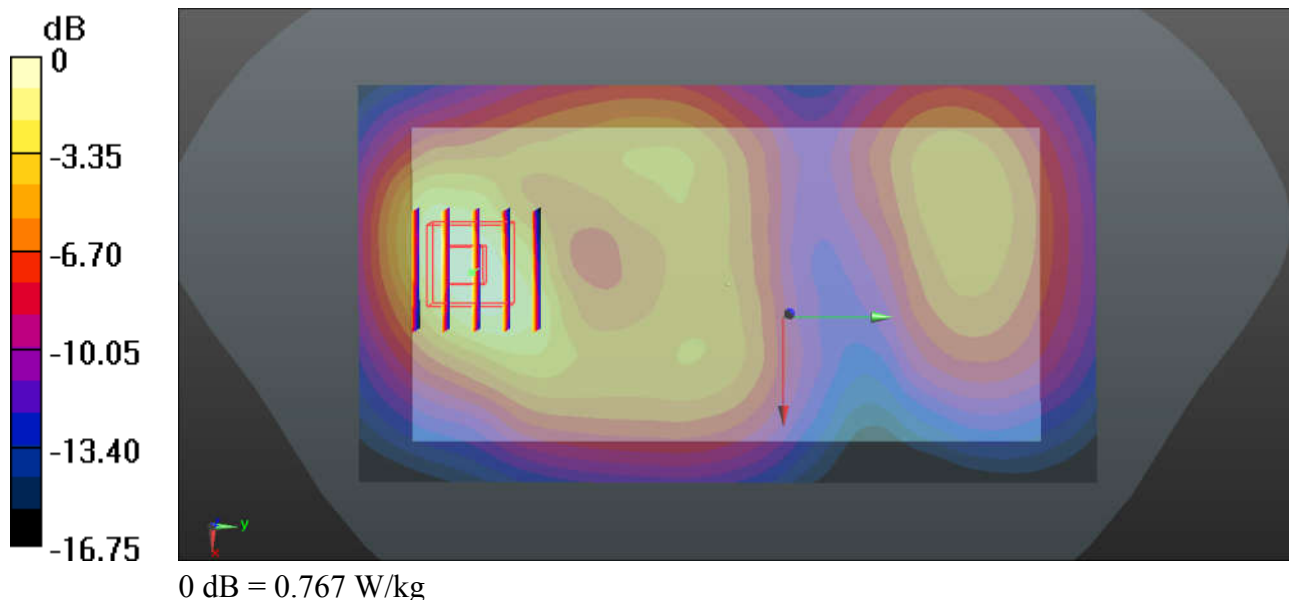
Communication System: UID 0, UMTS (0); Frequency: 1880 MHz; Duty Cycle: 1:1
Medium: MSL_1900_170617 Medium parameters used: $f = 1880$ MHz; $\sigma = 1.554$ S/m; $\epsilon_r = 54.289$;
 $\rho = 1000$ kg/m³
Ambient Temperature : 23.4 °C; Liquid Temperature : 22.5 °C

DASY5 Configuration:

- Probe: EX3DV4 - SN3819; ConvF(7.77, 7.77, 7.77); Calibrated: 2016.11.28;
- Sensor-Surface: 2mm (Mechanical Surface Detection)
- Electronics: DAE4 Sn1303; Calibrated: 2016.11.22
- Phantom: SAM2; Type: QD000P40CD; Serial: TP:1671
- Measurement SW: DASY52, Version 52.8 (8); SEMCAD X Version 14.6.10 (7331)

Ch9400/Area Scan (71x131x1): Interpolated grid: dx=15mm, dy=15mm
Maximum value of SAR (interpolated) = 0.767 W/kg

Ch9400/Zoom Scan (5x5x7)/Cube 0: Measurement grid: dx=8mm, dy=8mm, dz=5mm
Reference Value = 3.588 V/m; Power Drift = -0.05 dB
Peak SAR (extrapolated) = 0.949 W/kg
SAR(1 g) = 0.579 W/kg; SAR(10 g) = 0.332 W/kg
Maximum value of SAR (measured) = 0.772 W/kg



33_LTE Band 12_10M_QPSK_1RB_49Offset_Back_15mm_Ch23095

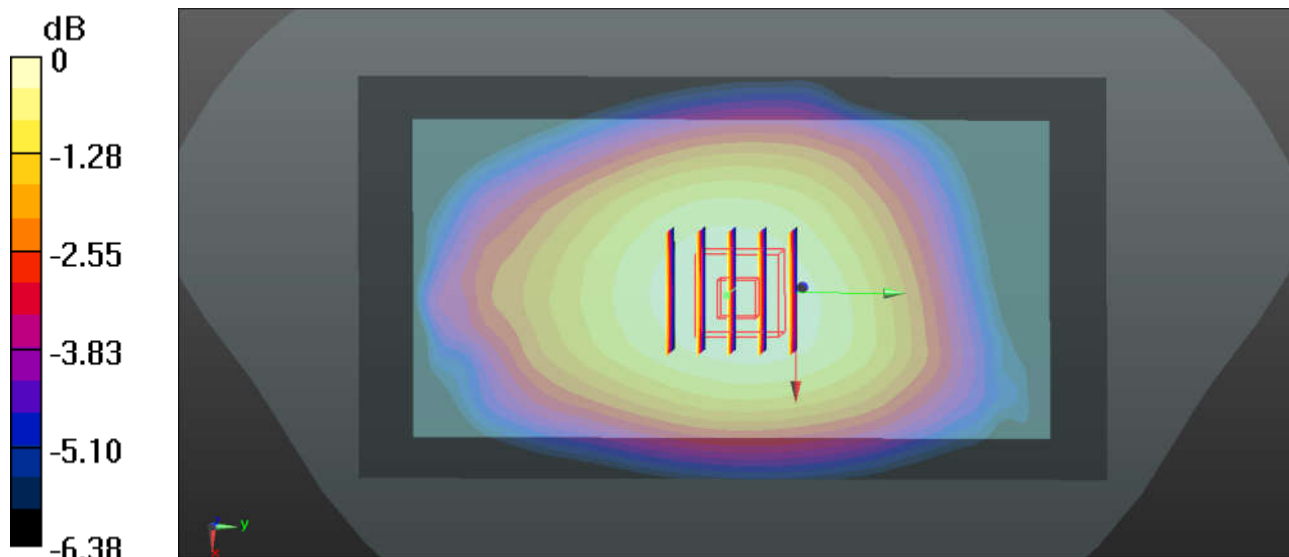
Communication System: UID 0, LTE (0); Frequency: 707.5 MHz; Duty Cycle: 1:1
Medium: MSL_750_170620 Medium parameters used: $f = 707.5$ MHz; $\sigma = 0.939$ S/m; $\epsilon_r = 55.571$; $\rho = 1000$ kg/m³
Ambient Temperature : 23.5 °C; Liquid Temperature : 22.7 °C

DASY5 Configuration:

- Probe: EX3DV4 - SN3819; ConvF(9.86, 9.86, 9.86); Calibrated: 2016.11.28;
- Sensor-Surface: 2mm (Mechanical Surface Detection)
- Electronics: DAE4 Sn1303; Calibrated: 2016.11.22
- Phantom: SAM2; Type: QD000P40CD; Serial: TP:1671
- Measurement SW: DASY52, Version 52.8 (8); SEMCAD X Version 14.6.10 (7331)

Ch23095/Area Scan (71x131x1): Interpolated grid: dx=15mm, dy=15mm
Maximum value of SAR (interpolated) = 0.291 W/kg

Ch23095/Zoom Scan (5x5x7)/Cube 0: Measurement grid: dx=8mm, dy=8mm, dz=5mm
Reference Value = 2.117 V/m; Power Drift = -0.06 dB
Peak SAR (extrapolated) = 0.313 W/kg
SAR(1 g) = 0.255 W/kg; SAR(10 g) = 0.202 W/kg
Maximum value of SAR (measured) = 0.288 W/kg



0 dB = 0.291 W/kg

34_LTE Band 5_10M_QPSK_1RB_49Offset_Back_15mm_Ch20525

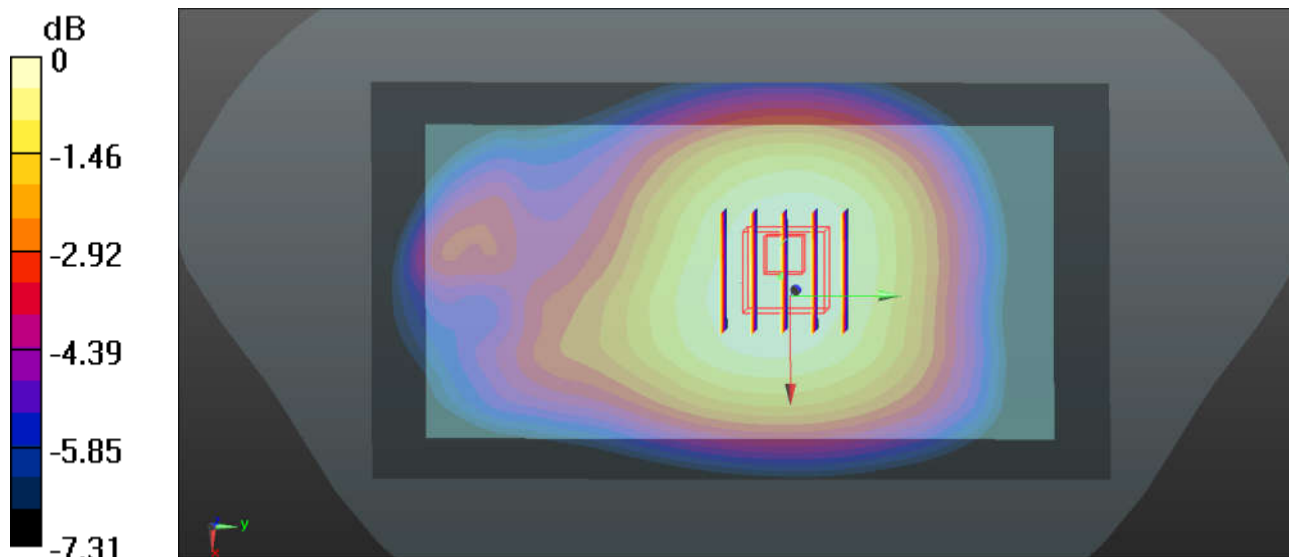
Communication System: UID 0, LTE (0); Frequency: 836.5 MHz; Duty Cycle: 1:1
Medium: MSL_835_170619 Medium parameters used: $f = 836.5$ MHz; $\sigma = 1.013$ S/m; $\epsilon_r = 56.227$; $\rho = 1000$ kg/m³
Ambient Temperature : 23.5 °C; Liquid Temperature : 22.5 °C

DASY5 Configuration:

- Probe: EX3DV4 - SN3819; ConvF(9.53, 9.53, 9.53); Calibrated: 2016.11.28;
- Sensor-Surface: 2mm (Mechanical Surface Detection)
- Electronics: DAE4 Sn1303; Calibrated: 2016.11.22
- Phantom: SAM2; Type: QD000P40CD; Serial: TP:1671
- Measurement SW: DASY52, Version 52.8 (8); SEMCAD X Version 14.6.10 (7331)

Ch20525/Area Scan (71x131x1): Interpolated grid: dx=15mm, dy=15mm
Maximum value of SAR (interpolated) = 0.339 W/kg

Ch20525/Zoom Scan (5x5x7)/Cube 0: Measurement grid: dx=8mm, dy=8mm, dz=5mm
Reference Value = 2.492 V/m; Power Drift = 0.01 dB
Peak SAR (extrapolated) = 0.384 W/kg
SAR(1 g) = 0.300 W/kg; SAR(10 g) = 0.230 W/kg
Maximum value of SAR (measured) = 0.352 W/kg



0 dB = 0.339 W/kg

35_LTE Band 4_20M_QPSK_1RB_49Offset_Back_15mm_Ch20175

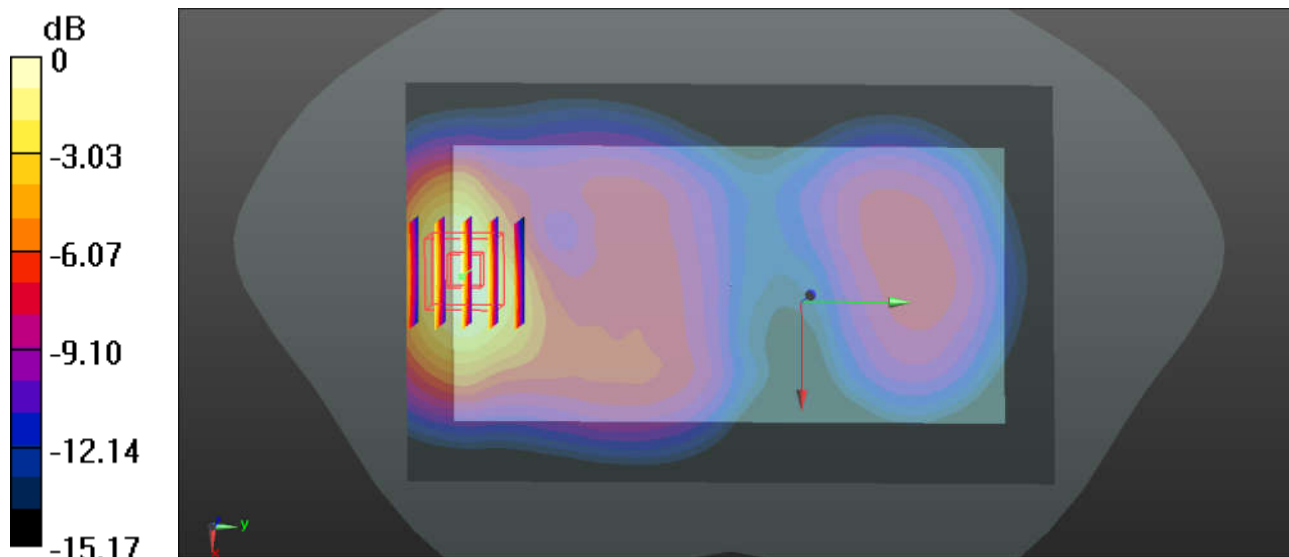
Communication System: UID 0, LTE (0); Frequency: 1732.5 MHz; Duty Cycle: 1:1
Medium: MSL_1800_170621 Medium parameters used: $f = 1732.5$ MHz; $\sigma = 1.496$ S/m; $\epsilon_r = 53.649$;
 $\rho = 1000$ kg/m³
Ambient Temperature : 23.6 °C ; Liquid Temperature : 22.6 °C

DASY5 Configuration:

- Probe: EX3DV4 - SN3819; ConvF(8.08, 8.08, 8.08); Calibrated: 2016.11.28;
- Sensor-Surface: 2mm (Mechanical Surface Detection)
- Electronics: DAE4 Sn1303; Calibrated: 2016.11.22
- Phantom: SAM2; Type: QD000P40CD; Serial: TP:1671
- Measurement SW: DASY52, Version 52.8 (8); SEMCAD X Version 14.6.10 (7331)

Ch20175/Area Scan (81x131x1): Interpolated grid: dx=15mm, dy=15mm
Maximum value of SAR (interpolated) = 0.853 W/kg

Ch20175/Zoom Scan (5x5x7)/Cube 0: Measurement grid: dx=8mm, dy=8mm, dz=5mm
Reference Value = 0.8350 V/m; Power Drift = 0.09 dB
Peak SAR (extrapolated) = 1.09 W/kg
SAR(1 g) = 0.704 W/kg; SAR(10 g) = 0.418 W/kg
Maximum value of SAR (measured) = 0.913 W/kg



0 dB = 0.853 W/kg

36_LTE Band 66_20M_QPSK_1RB_49Offset_Back_15mm_Ch132322

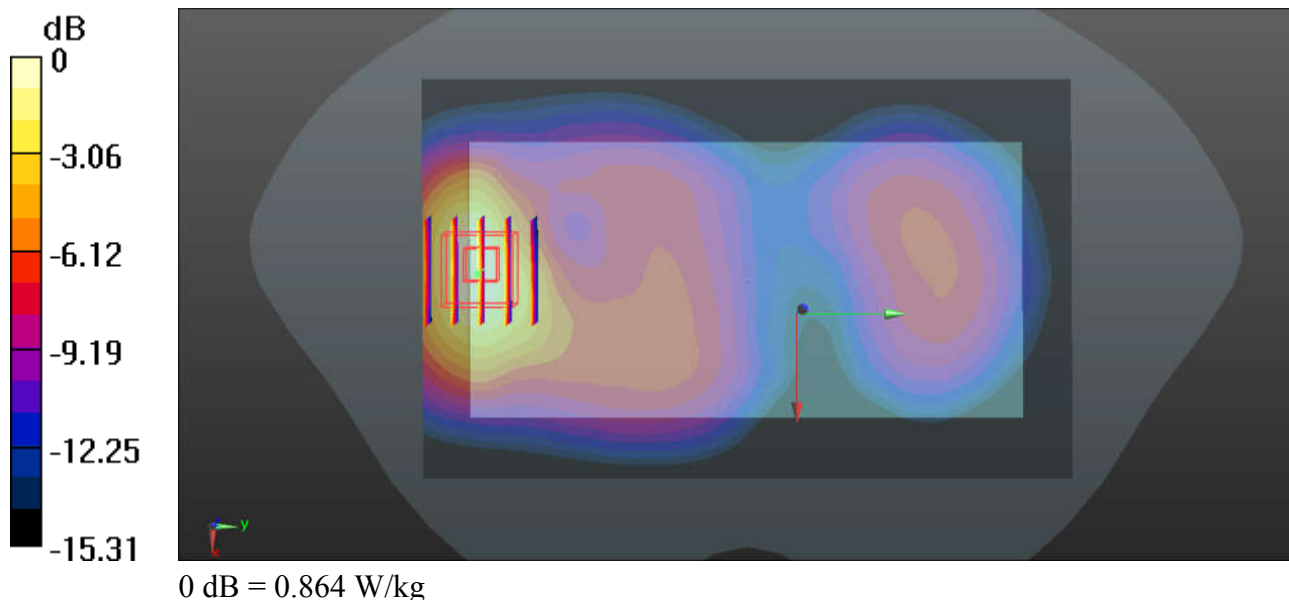
Communication System: UID 0, LTE (0); Frequency: 1745 MHz; Duty Cycle: 1:1
Medium: MSL_1800_170621 Medium parameters used: $f = 1745$ MHz; $\sigma = 1.509$ S/m; $\epsilon_r = 53.565$;
 $\rho = 1000$ kg/m³
Ambient Temperature : 23.6 °C; Liquid Temperature : 22.6 °C

DASY5 Configuration:

- Probe: EX3DV4 - SN3819; ConvF(8.08, 8.08, 8.08); Calibrated: 2016.11.28;
- Sensor-Surface: 2mm (Mechanical Surface Detection)
- Electronics: DAE4 Sn1303; Calibrated: 2016.11.22
- Phantom: SAM2; Type: QD000P40CD; Serial: TP:1671
- Measurement SW: DASY52, Version 52.8 (8); SEMCAD X Version 14.6.10 (7331)

Ch132322/Area Scan (81x131x1): Interpolated grid: dx=15mm, dy=15mm
Maximum value of SAR (interpolated) = 0.864 W/kg

Ch132322/Zoom Scan (5x5x7)/Cube 0: Measurement grid: dx=8mm, dy=8mm, dz=5mm
Reference Value = 1.040 V/m; Power Drift = 0.02 dB
Peak SAR (extrapolated) = 1.05 W/kg
SAR(1 g) = 0.688 W/kg; SAR(10 g) = 0.406 W/kg
Maximum value of SAR (measured) = 0.866 W/kg



37_LTE Band 2_20M_QPSK_1RB_49Offset_Back_15mm_Ch18900

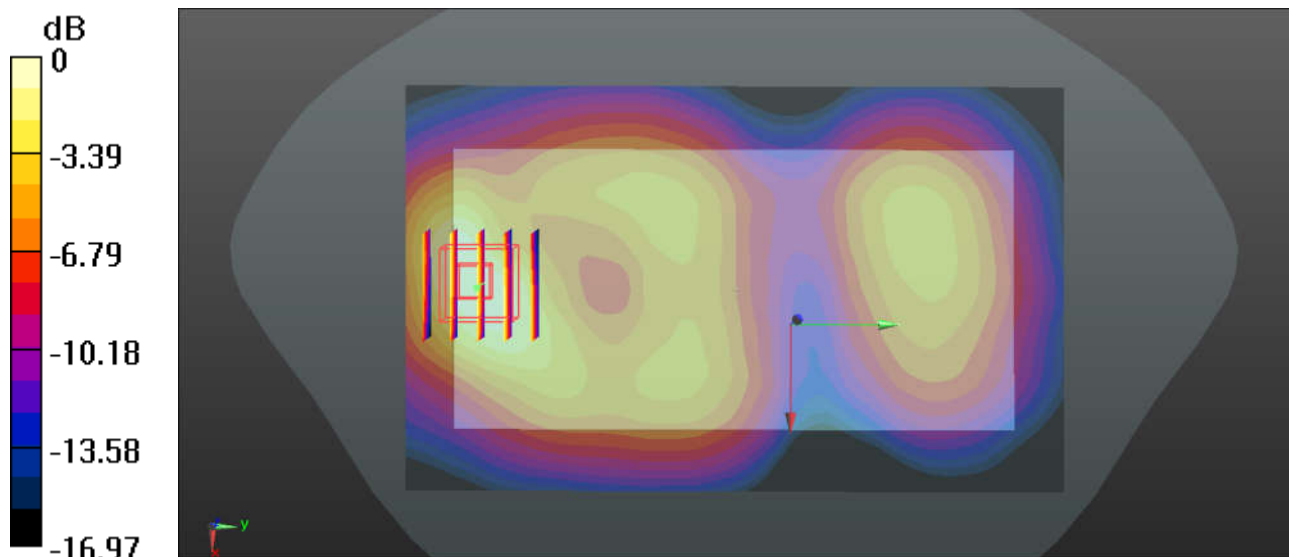
Communication System: UID 0, LTE (0); Frequency: 1880 MHz; Duty Cycle: 1:1
Medium: MSL_1900_170617 Medium parameters used: $f = 1880$ MHz; $\sigma = 1.554$ S/m; $\epsilon_r = 54.289$; $\rho = 1000$ kg/m³
Ambient Temperature : 23.4 °C; Liquid Temperature : 22.5 °C

DASY5 Configuration:

- Probe: EX3DV4 - SN3819; ConvF(7.77, 7.77, 7.77); Calibrated: 2016.11.28;
- Sensor-Surface: 2mm (Mechanical Surface Detection)
- Electronics: DAE4 Sn1303; Calibrated: 2016.11.22
- Phantom: SAM2; Type: QD000P40CD; Serial: TP:1671
- Measurement SW: DASY52, Version 52.8 (8); SEMCAD X Version 14.6.10 (7331)

Ch18900/Area Scan (81x131x1): Interpolated grid: dx=15mm, dy=15mm
Maximum value of SAR (interpolated) = 0.522 W/kg

Ch18900/Zoom Scan (5x5x7)/Cube 0: Measurement grid: dx=8mm, dy=8mm, dz=5mm
Reference Value = 1.172 V/m; Power Drift = 0.07 dB
Peak SAR (extrapolated) = 0.603 W/kg
SAR(1 g) = 0.388 W/kg; SAR(10 g) = 0.230 W/kg
Maximum value of SAR (measured) = 0.504 W/kg



0 dB = 0.522 W/kg

38_WLAN2.4GHz_802.11b 1Mbps_Front_15mm_Ch1

Communication System: UID 0, WIFI (0); Frequency: 2412 MHz; Duty Cycle: 1:1.025
Medium: MSL_2450_170625 Medium parameters used: $f = 2412$ MHz; $\sigma = 1.906$ S/m; $\epsilon_r = 54.182$; $\rho = 1000$ kg/m³
Ambient Temperature : 23.6 °C; Liquid Temperature : 22.8 °C

DASY5 Configuration:

- Probe: EX3DV4 - SN3819; ConvF(7.34, 7.34, 7.34); Calibrated: 2016.11.28;
- Sensor-Surface: 2mm (Mechanical Surface Detection)
- Electronics: DAE4 Sn1303; Calibrated: 2016.11.22
- Phantom: SAM2; Type: QD000P40CD; Serial: TP:1671
- Measurement SW: DASY52, Version 52.8 (8); SEMCAD X Version 14.6.10 (7331)

Ch1/Area Scan (91x161x1): Interpolated grid: dx=12mm, dy=12mm

Maximum value of SAR (interpolated) = 0.201 W/kg

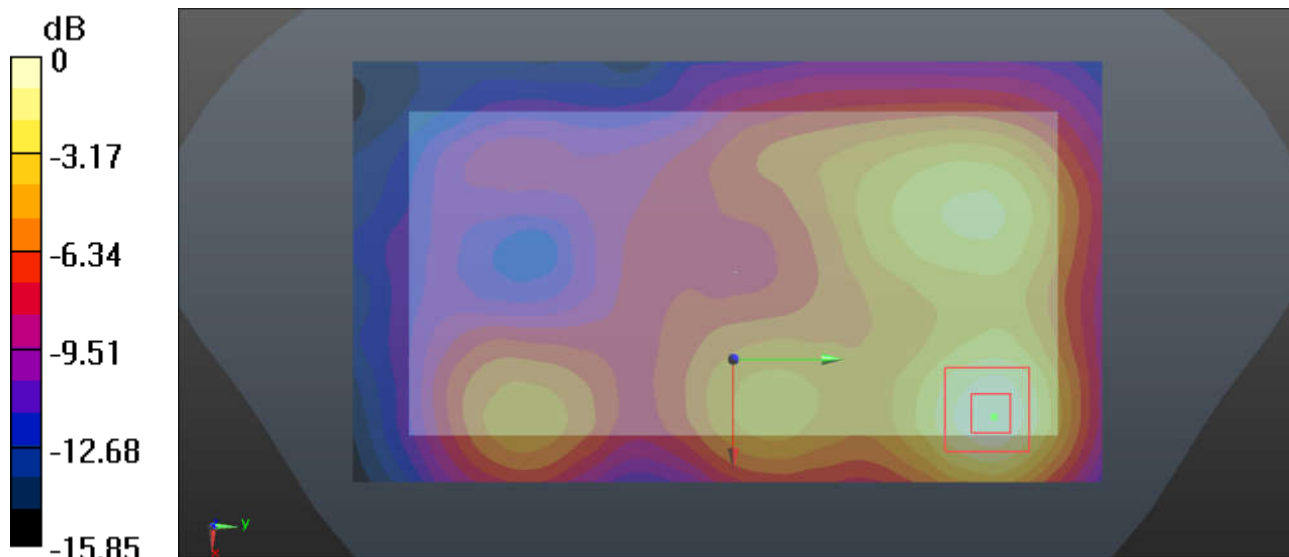
Ch1/Zoom Scan (7x7x7)/Cube 0: Measurement grid: dx=5mm, dy=5mm, dz=5mm

Reference Value = 1.727 V/m; Power Drift = -0.04 dB

Peak SAR (extrapolated) = 0.251 W/kg

SAR(1 g) = 0.139 W/kg; SAR(10 g) = 0.078 W/kg

Maximum value of SAR (measured) = 0.194 W/kg



0 dB = 0.201 W/kg

39_WLAN5.3GHz_802.11a 6Mbps_Back_15mm_Ch60

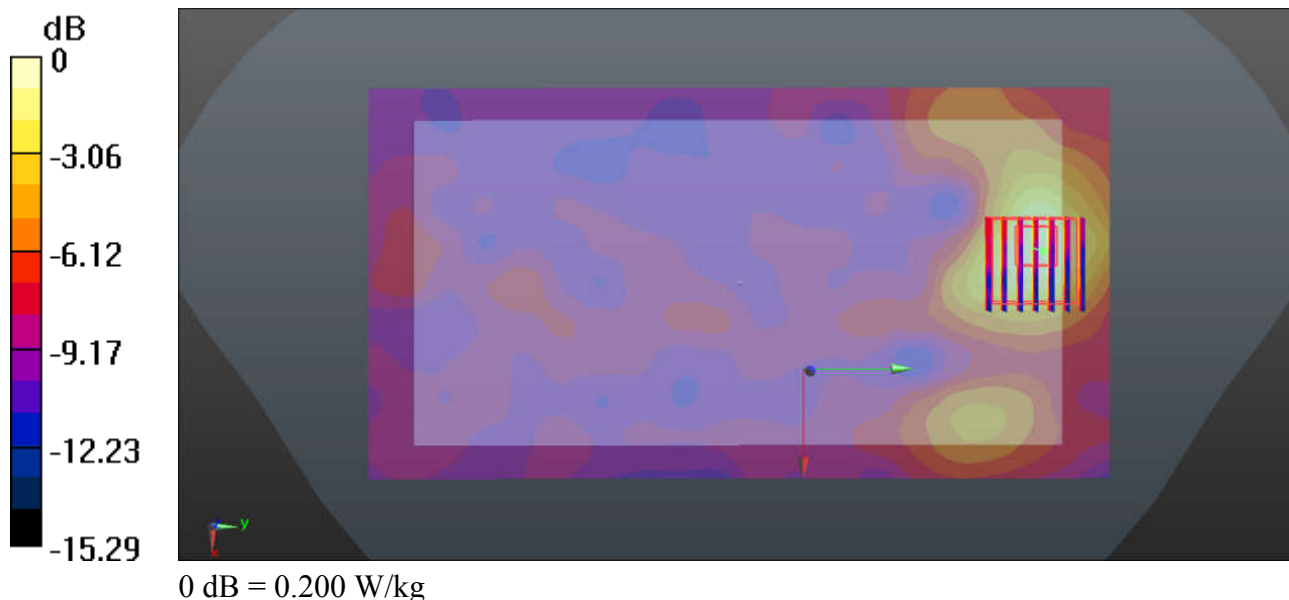
Communication System: UID 0, WIFI (0); Frequency: 5300 MHz; Duty Cycle: 1:1.144
Medium: MSL_5250_170624 Medium parameters used: $f = 5300 \text{ MHz}$; $\sigma = 5.411 \text{ S/m}$; $\epsilon_r = 51.008$; $\rho = 1000 \text{ kg/m}^3$
Ambient Temperature : $23.4 \text{ }^\circ\text{C}$; Liquid Temperature : $22.8 \text{ }^\circ\text{C}$

DASY5 Configuration:

- Probe: EX3DV4 - SN3819; ConvF(4.5, 4.5, 4.5); Calibrated: 2016.11.28;
- Sensor-Surface: 1.4mm (Mechanical Surface Detection)
- Electronics: DAE4 Sn1303; Calibrated: 2016.11.22
- Phantom: SAM2; Type: QD000P40CD; Serial: TP:1671
- Measurement SW: DASY52, Version 52.8 (8); SEMCAD X Version 14.6.10 (7331)

Ch60/Area Scan (101x191x1): Interpolated grid: $dx=10\text{mm}$, $dy=10\text{mm}$
Maximum value of SAR (interpolated) = 0.200 W/kg

Ch60/Zoom Scan (7x7x7)/Cube 0: Measurement grid: $dx=4\text{mm}$, $dy=4\text{mm}$, $dz=1.4\text{mm}$
Reference Value = 2.596 V/m ; Power Drift = -0.06 dB
Peak SAR (extrapolated) = 0.367 W/kg
SAR(1 g) = 0.108 W/kg ; SAR(10 g) = 0.047 W/kg
Maximum value of SAR (measured) = 0.214 W/kg



40_WLAN5.5GHz_802.11a 6Mbps_Back_15mm_Ch144

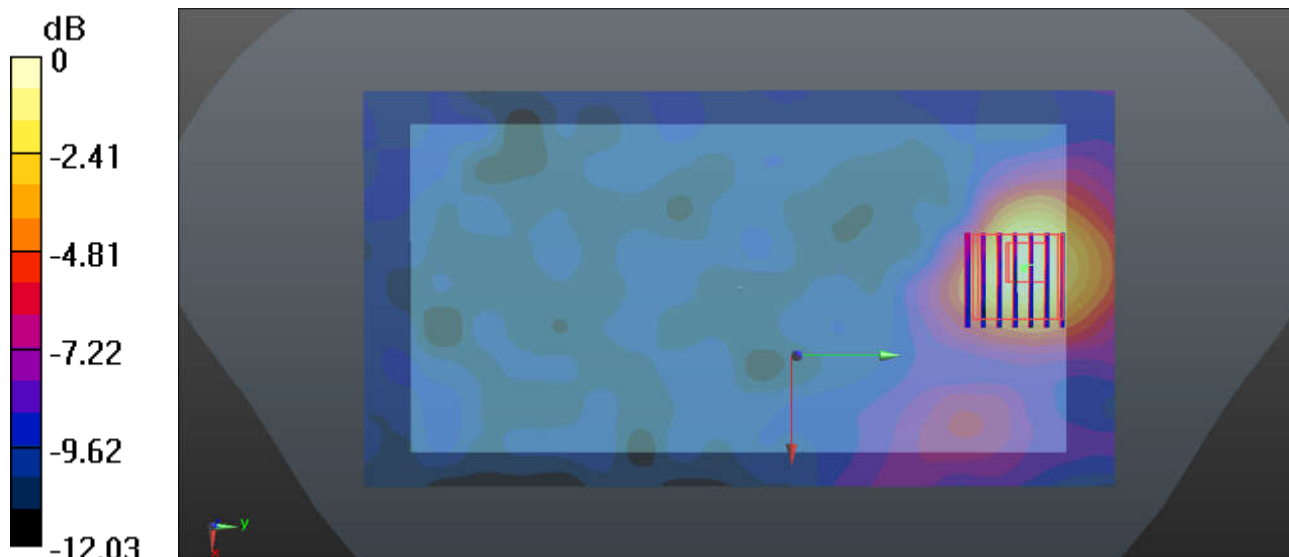
Communication System: UID 0, WIFI (0); Frequency: 5720 MHz; Duty Cycle: 1:1.144
Medium: MSL_5600_170624 Medium parameters used: $f = 5720$ MHz; $\sigma = 6.01$ S/m; $\epsilon_r = 50.124$; $\rho = 1000$ kg/m³
Ambient Temperature : 23.3 °C; Liquid Temperature : 22.4 °C

DASY5 Configuration:

- Probe: EX3DV4 - SN3819; ConvF(3.95, 3.95, 3.95); Calibrated: 2016.11.28;
- Sensor-Surface: 1.4mm (Mechanical Surface Detection)
- Electronics: DAE4 Sn1303; Calibrated: 2016.11.22
- Phantom: SAM2; Type: QD000P40CD; Serial: TP:1671
- Measurement SW: DASY52, Version 52.8 (8); SEMCAD X Version 14.6.10 (7331)

Ch144/Area Scan (101x191x1): Interpolated grid: dx=10mm, dy=10mm
Maximum value of SAR (interpolated) = 0.259 W/kg

Ch144/Zoom Scan (7x7x7)/Cube 0: Measurement grid: dx=4mm, dy=4mm, dz=1.4mm
Reference Value = 2.196 V/m; Power Drift = -0.07 dB
Peak SAR (extrapolated) = 0.404 W/kg
SAR(1 g) = 0.125 W/kg; SAR(10 g) = 0.062 W/kg
Maximum value of SAR (measured) = 0.239 W/kg



0 dB = 0.239 W/kg

41_WLAN5.8GHz_802.11a 6Mbps_Back_15mm_Ch165

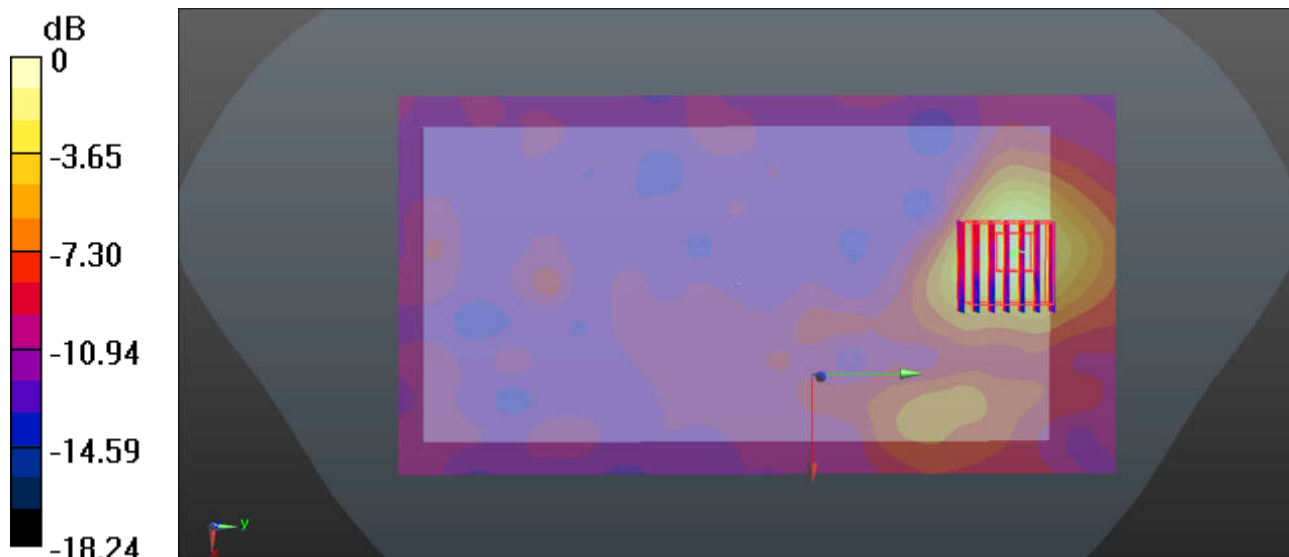
Communication System: UID 0, WIFI (0); Frequency: 5825 MHz; Duty Cycle: 1:1.144
Medium: MSL_5750_170624 Medium parameters used: $f = 5825$ MHz; $\sigma = 6.166$ S/m; $\epsilon_r = 49.863$; $\rho = 1000$ kg/m³
Ambient Temperature : 23.5 °C; Liquid Temperature : 22.9 °C

DASY5 Configuration:

- Probe: EX3DV4 - SN3819; ConvF(4.13, 4.13, 4.13); Calibrated: 2016.11.28;
- Sensor-Surface: 1.4mm (Mechanical Surface Detection)
- Electronics: DAE4 Sn1303; Calibrated: 2016.11.22
- Phantom: SAM2; Type: QD000P40CD; Serial: TP:1671
- Measurement SW: DASY52, Version 52.8 (8); SEMCAD X Version 14.6.10 (7331)

Ch165/Area Scan (101x191x1): Interpolated grid: dx=10mm, dy=10mm
Maximum value of SAR (interpolated) = 0.325 W/kg

Ch165/Zoom Scan (7x7x7)/Cube 0: Measurement grid: dx=4mm, dy=4mm, dz=1.4mm
Reference Value = 2.504 V/m; Power Drift = -0.02 dB
Peak SAR (extrapolated) = 0.476 W/kg
SAR(1 g) = 0.140 W/kg; SAR(10 g) = 0.062 W/kg
Maximum value of SAR (measured) = 0.298 W/kg



0 dB = 0.325 W/kg

42_WCDMA Band IV_RMC 12.2Kbps_Back_0mm_Ch1312

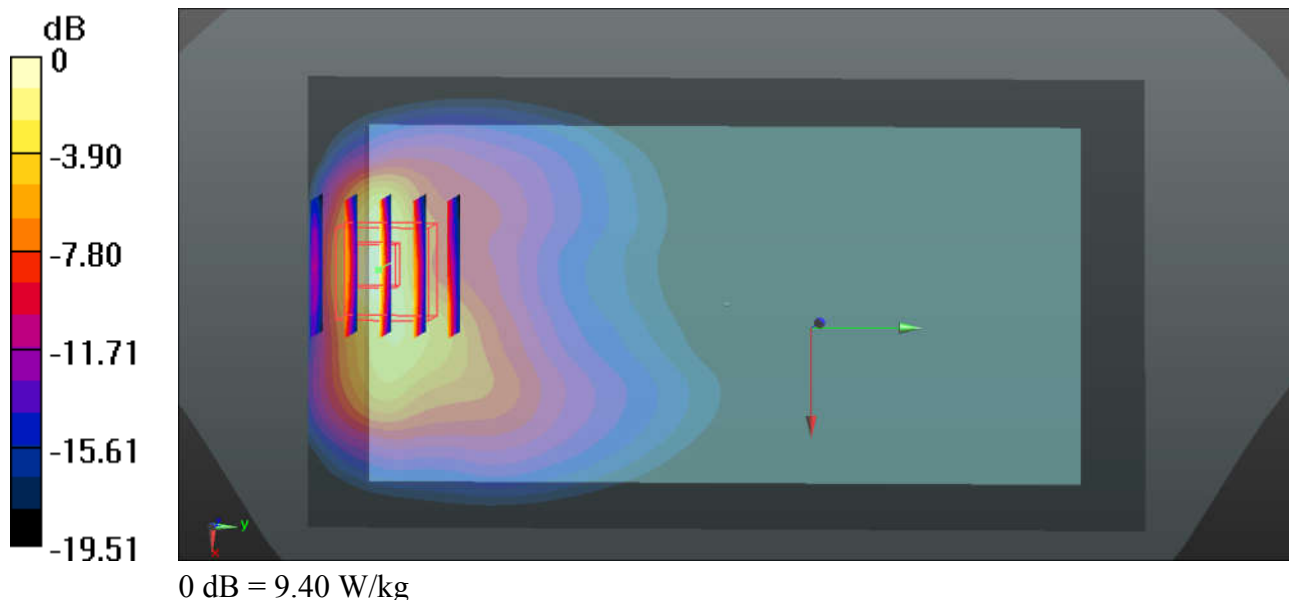
Communication System: UID 0, UMTS (0); Frequency: 1712.4 MHz; Duty Cycle: 1:1
Medium: MSL_1800_170621 Medium parameters used: $f = 1712.4$ MHz; $\sigma = 1.469$ S/m; $\epsilon_r = 54.269$;
 $\rho = 1000$ kg/m³
Ambient Temperature : 23.6 °C; Liquid Temperature : 22.6 °C

DASY5 Configuration:

- Probe: EX3DV4 - SN3819; ConvF(8.08, 8.08, 8.08); Calibrated: 2016.11.28;
- Sensor-Surface: 2mm (Mechanical Surface Detection)
- Electronics: DAE4 Sn1303; Calibrated: 2016.11.22
- Phantom: SAM2; Type: QD000P40CD; Serial: TP:1671
- Measurement SW: DASY52, Version 52.8 (8); SEMCAD X Version 14.6.10 (7331)

Ch1312/Area Scan (71x131x1): Interpolated grid: dx=15mm, dy=15mm
Maximum value of SAR (interpolated) = 9.40 W/kg

Ch1312/Zoom Scan (5x5x7)/Cube 0: Measurement grid: dx=8mm, dy=8mm, dz=5mm
Reference Value = 2.573 V/m; Power Drift = 0.02 dB
Peak SAR (extrapolated) = 11.3 W/kg
SAR(1 g) = 5.54 W/kg; SAR(10 g) = 2.49 W/kg
Maximum value of SAR (measured) = 9.43 W/kg



43_WCDMA Band II_RMC 12.2Kbps_Back_0mm_Ch9400

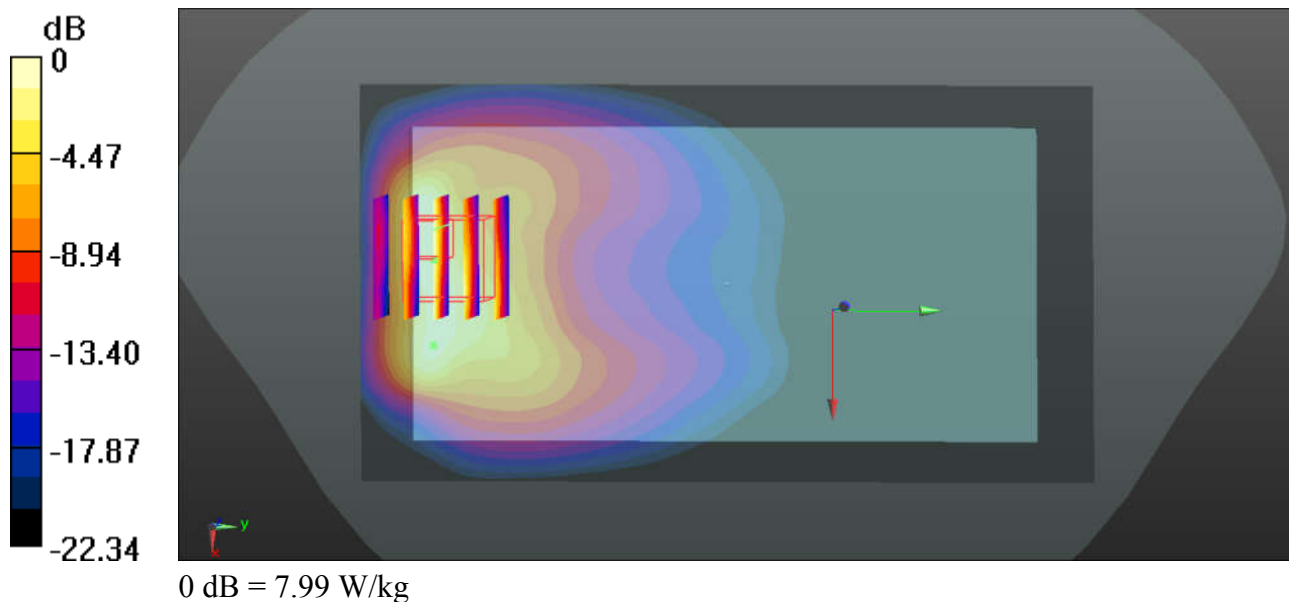
Communication System: UID 0, UMTS (0); Frequency: 1880 MHz; Duty Cycle: 1:1
Medium: MSL_1900_170617 Medium parameters used: $f = 1880$ MHz; $\sigma = 1.554$ S/m; $\epsilon_r = 54.289$;
 $\rho = 1000$ kg/m³
Ambient Temperature : 23.4 °C; Liquid Temperature : 22.5 °C

DASY5 Configuration:

- Probe: EX3DV4 - SN3819; ConvF(7.77, 7.77, 7.77); Calibrated: 2016.11.28;
- Sensor-Surface: 2mm (Mechanical Surface Detection)
- Electronics: DAE4 Sn1303; Calibrated: 2016.11.22
- Phantom: SAM2; Type: QD000P40CD; Serial: TP:1671
- Measurement SW: DASY52, Version 52.8 (8); SEMCAD X Version 14.6.10 (7331)

Ch9400/Area Scan (71x131x1): Interpolated grid: dx=15mm, dy=15mm
Maximum value of SAR (interpolated) = 7.99 W/kg

Ch9400/Zoom Scan (5x5x7)/Cube 0: Measurement grid: dx=8mm, dy=8mm, dz=5mm
Reference Value = 3.085 V/m; Power Drift = 0.05 dB
Peak SAR (extrapolated) = 11.4 W/kg
SAR(1 g) = 5.36 W/kg; SAR(10 g) = 2.45 W/kg
Maximum value of SAR (measured) = 10.1 W/kg



44_LTE Band 4_20M_QPSK_1RB_49Offset_Back_0mm_Ch20175

Communication System: UID 0, LTE (0); Frequency: 1732.5 MHz;Duty Cycle: 1:1
Medium: MSL_1800_170621 Medium parameters used: $f = 1732.5$ MHz; $\sigma = 1.496$ S/m; $\epsilon_r = 53.649$;
 $\rho = 1000$ kg/m³
Ambient Temperature : 23.6 °C; Liquid Temperature : 22.6 °C

DASY5 Configuration:

- Probe: EX3DV4 - SN3819; ConvF(8.08, 8.08, 8.08); Calibrated: 2016.11.28;
- Sensor-Surface: 2mm (Mechanical Surface Detection)
- Electronics: DAE4 Sn1303; Calibrated: 2016.11.22
- Phantom: SAM2; Type: QD000P40CD; Serial: TP:1671
- Measurement SW: DASY52, Version 52.8 (8); SEMCAD X Version 14.6.10 (7331)

Ch20175/Area Scan (81x131x1): Interpolated grid: dx=15mm, dy=15mm

Maximum value of SAR (interpolated) = 7.15 W/kg

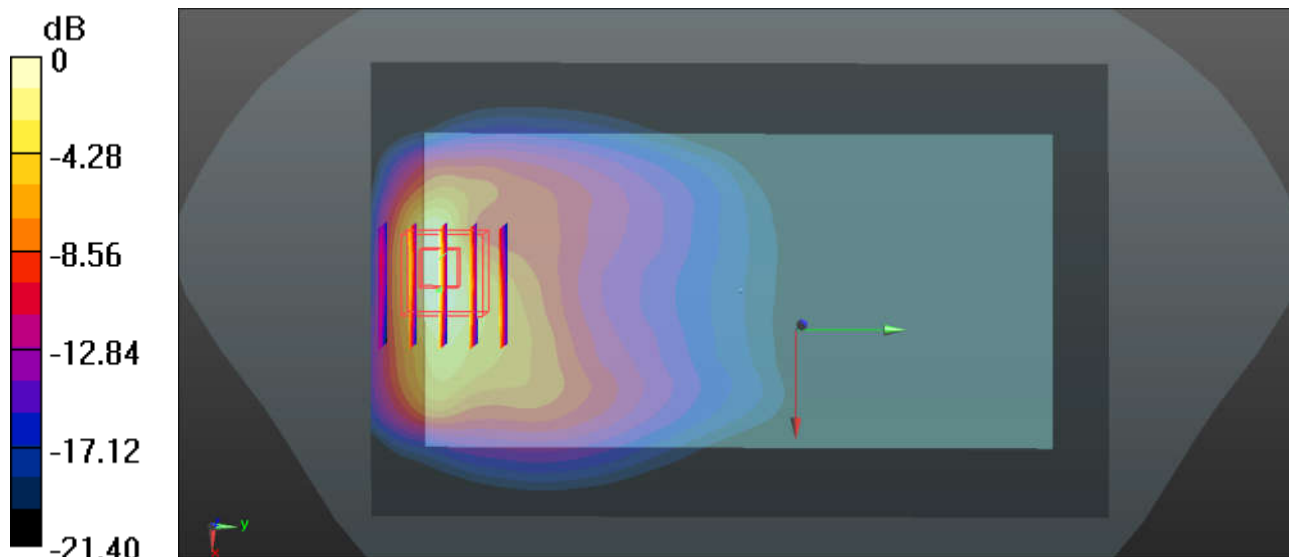
Ch20175/Zoom Scan (5x5x7)/Cube 0: Measurement grid: dx=8mm, dy=8mm, dz=5mm

Reference Value = 2.034 V/m; Power Drift = 0.02 dB

Peak SAR (extrapolated) = 9.97 W/kg

SAR(1 g) = 5 W/kg; SAR(10 g) = 2.29 W/kg

Maximum value of SAR (measured) = 8.52 W/kg



45_LTE Band 66_20M_QPSK_1RB_49Offset_Back_0mm_Ch132072

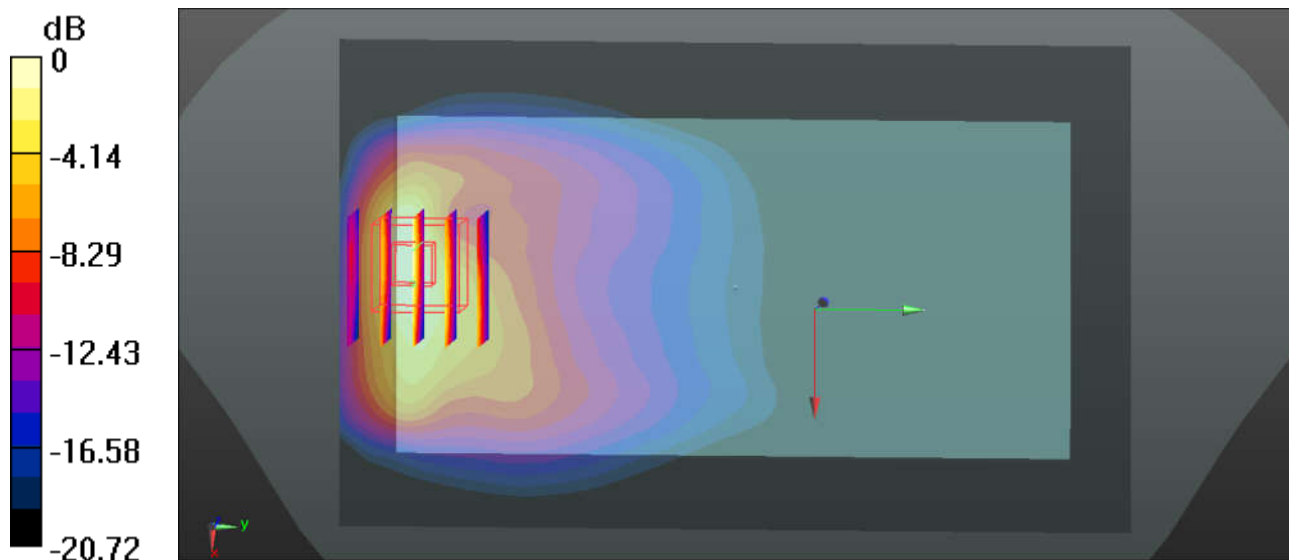
Communication System: UID 0, LTE (0); Frequency: 1720 MHz; Duty Cycle: 1:1
Medium: MSL_1800_170621 Medium parameters used: $f = 1720$ MHz; $\sigma = 1.477$ S/m; $\epsilon_r = 54.025$; $\rho = 1000$ kg/m³
Ambient Temperature : 23.6 °C; Liquid Temperature : 22.6 °C

DASY5 Configuration:

- Probe: EX3DV4 - SN3819; ConvF(8.08, 8.08, 8.08); Calibrated: 2016.11.28;
- Sensor-Surface: 2mm (Mechanical Surface Detection)
- Electronics: DAE4 Sn1303; Calibrated: 2016.11.22
- Phantom: SAM2; Type: QD000P40CD; Serial: TP:1671
- Measurement SW: DASY52, Version 52.8 (8); SEMCAD X Version 14.6.10 (7331)

Ch132072/Area Scan (81x131x1): Interpolated grid: dx=15mm, dy=15mm
Maximum value of SAR (interpolated) = 6.57 W/kg

Ch132072/Zoom Scan (5x5x7)/Cube 0: Measurement grid: dx=8mm, dy=8mm, dz=5mm
Reference Value = 2.165 V/m; Power Drift = 0.04 dB
Peak SAR (extrapolated) = 9.51 W/kg
SAR(1 g) = 4.81 W/kg; SAR(10 g) = 2.22 W/kg
Maximum value of SAR (measured) = 8.01 W/kg



0 dB = 6.57 W/kg

46_LTE Band 2_20M_QPSK_1RB_49Offset_Back_0mm_Ch18700

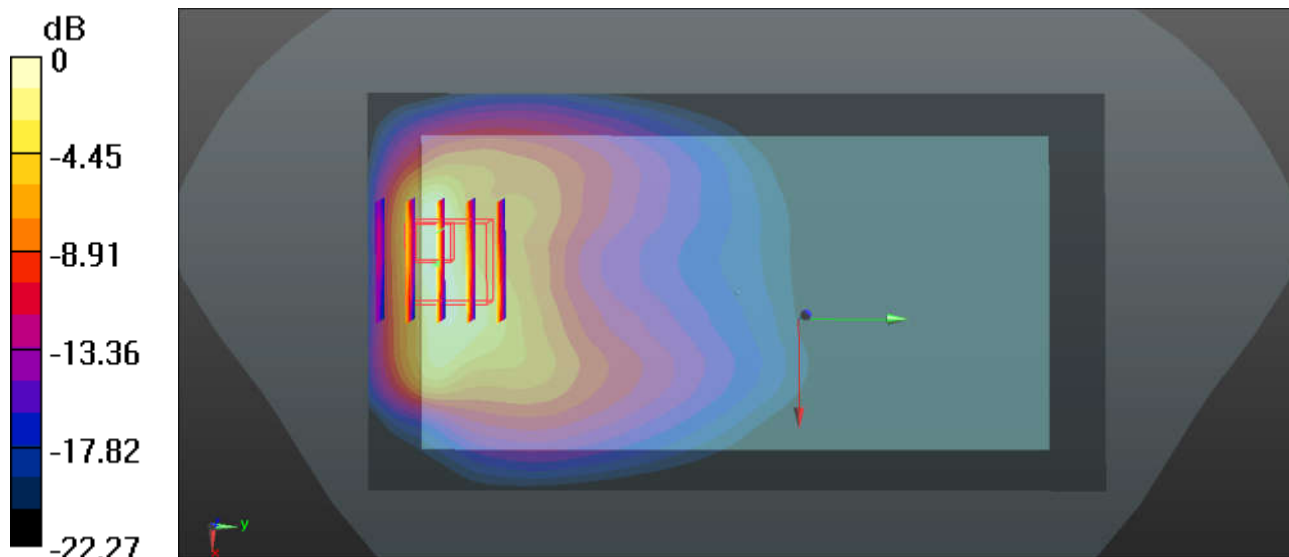
Communication System: UID 0, LTE (0); Frequency: 1860 MHz; Duty Cycle: 1:1
Medium: MSL_1900_170617 Medium parameters used: $f = 1860$ MHz; $\sigma = 1.532$ S/m; $\epsilon_r = 54.365$; $\rho = 1000$ kg/m³
Ambient Temperature : 23.4 °C; Liquid Temperature : 22.5 °C

DASY5 Configuration:

- Probe: EX3DV4 - SN3819; ConvF(7.77, 7.77, 7.77); Calibrated: 2016.11.28;
- Sensor-Surface: 2mm (Mechanical Surface Detection)
- Electronics: DAE4 Sn1303; Calibrated: 2016.11.22
- Phantom: SAM2; Type: QD000P40CD; Serial: TP:1671
- Measurement SW: DASY52, Version 52.8 (8); SEMCAD X Version 14.6.10 (7331)

Ch18700/Area Scan (71x131x1): Interpolated grid: dx=15mm, dy=15mm
Maximum value of SAR (interpolated) = 7.17 W/kg

Ch18700/Zoom Scan (5x5x7)/Cube 0: Measurement grid: dx=8mm, dy=8mm, dz=5mm
Reference Value = 3.395 V/m; Power Drift = 0.05 dB
Peak SAR (extrapolated) = 9.52 W/kg
SAR(1 g) = 4.57 W/kg; SAR(10 g) = 2.14 W/kg
Maximum value of SAR (measured) = 8.52 W/kg



47_WLAN5.3GHz_802.11a 6Mbps_Top Side_0mm_Ch60

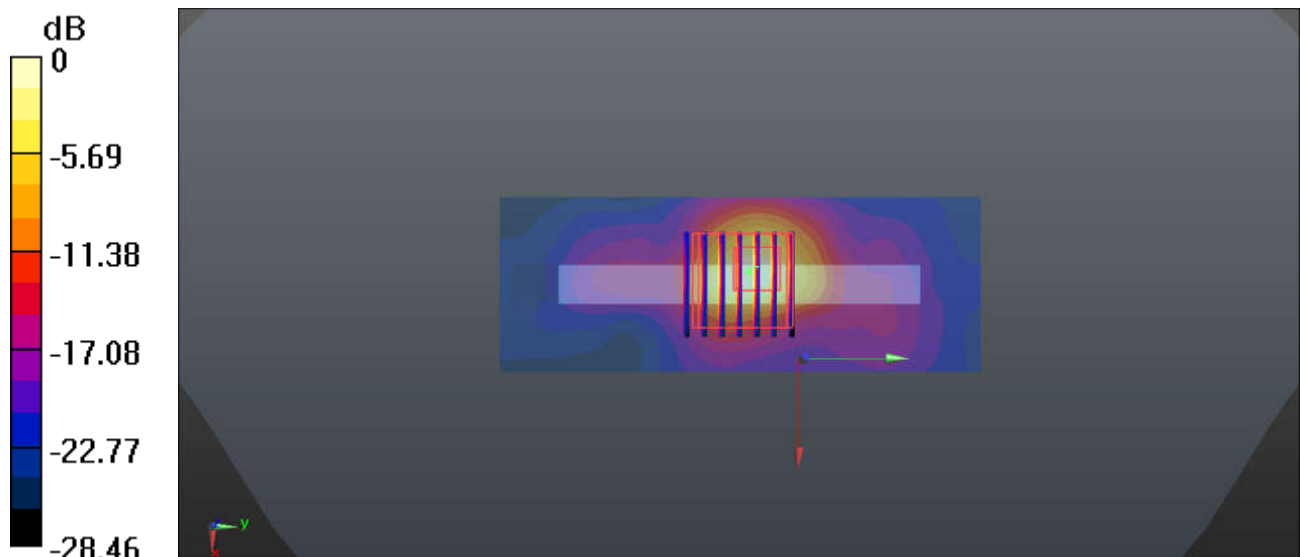
Communication System: UID 0, WIFI (0); Frequency: 5300 MHz; Duty Cycle: 1:1.144
Medium: MSL_5250_170624 Medium parameters used: $f = 5300$ MHz; $\sigma = 5.411$ S/m; $\epsilon_r = 51.008$; $\rho = 1000$ kg/m³
Ambient Temperature : 23.4 °C; Liquid Temperature : 22.8 °C

DASY5 Configuration:

- Probe: EX3DV4 - SN3819; ConvF(4.5, 4.5, 4.5); Calibrated: 2016.11.28;
- Sensor-Surface: 1.4mm (Mechanical Surface Detection)
- Electronics: DAE4 Sn1303; Calibrated: 2016.11.22
- Phantom: SAM2; Type: QD000P40CD; Serial: TP:1671
- Measurement SW: DASY52, Version 52.8 (8); SEMCAD X Version 14.6.10 (7331)

Ch60/Area Scan (41x111x1): Interpolated grid: dx=10mm, dy=10mm
Maximum value of SAR (interpolated) = 7.98 W/kg

Ch60/Zoom Scan (7x7x7)/Cube 0: Measurement grid: dx=4mm, dy=4mm, dz=1.4mm
Reference Value = 2.671 V/m; Power Drift = -0.08 dB
Peak SAR (extrapolated) = 15.0 W/kg
SAR(1 g) = 3.11 W/kg; SAR(10 g) = 0.749 W/kg
Maximum value of SAR (measured) = 8.32 W/kg



0 dB = 7.98 W/kg

48_WLAN5.5GHz_802.11a 6Mbps_Top Side_0mm_Ch144

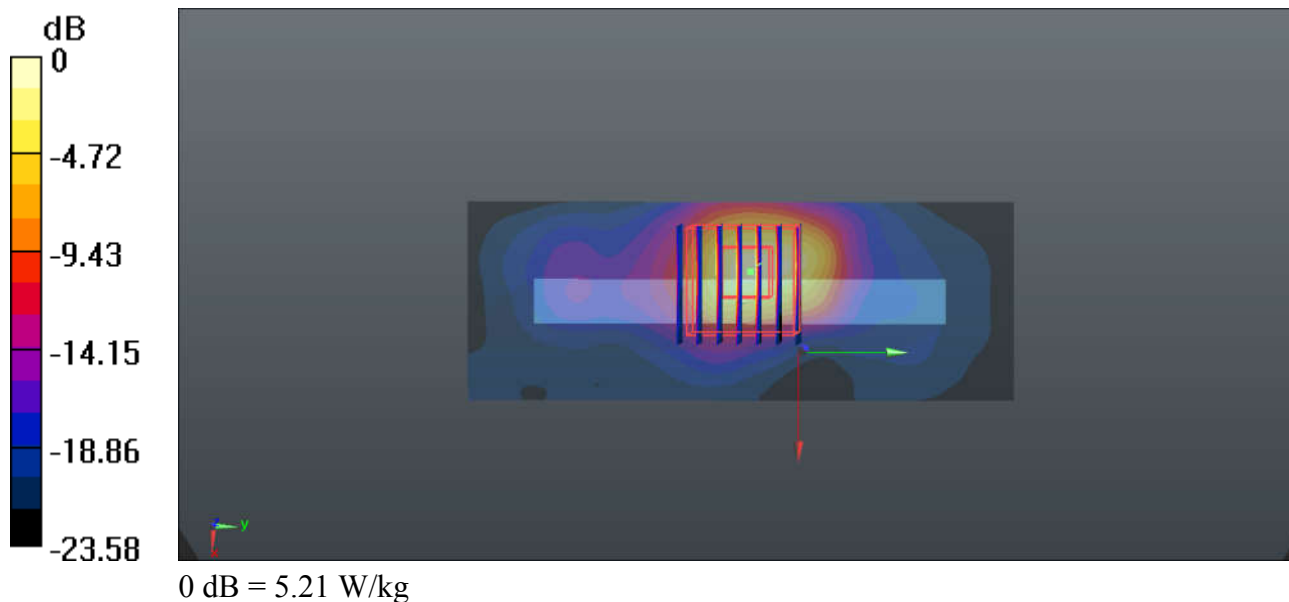
Communication System: UID 0, WIFI (0); Frequency: 5720 MHz; Duty Cycle: 1:1.144
Medium: MSL_5600_170624 Medium parameters used: $f = 5720$ MHz; $\sigma = 6.01$ S/m; $\epsilon_r = 50.124$; $\rho = 1000$ kg/m³
Ambient Temperature : 23.3 °C; Liquid Temperature : 22.4 °C

DASY5 Configuration:

- Probe: EX3DV4 - SN3819; ConvF(3.95, 3.95, 3.95); Calibrated: 2016.11.28;
- Sensor-Surface: 1.4mm (Mechanical Surface Detection)
- Electronics: DAE4 Sn1303; Calibrated: 2016.11.22
- Phantom: SAM2; Type: QD000P40CD; Serial: TP:1671
- Measurement SW: DASY52, Version 52.8 (8); SEMCAD X Version 14.6.10 (7331)

Ch144/Area Scan (41x111x1): Interpolated grid: dx=10mm, dy=10mm
Maximum value of SAR (interpolated) = 4.59 W/kg

Ch144/Zoom Scan (7x7x7)/Cube 0: Measurement grid: dx=4mm, dy=4mm, dz=1.4mm
Reference Value = 2.102 V/m; Power Drift = -0.04 dB
Peak SAR (extrapolated) = 10.2 W/kg
SAR(1 g) = 2.03 W/kg; SAR(10 g) = 0.497 W/kg
Maximum value of SAR (measured) = 5.21 W/kg





Appendix C. DASYS Calibration Certificate

The DASYS calibration certificates are shown as follows.



In Collaboration with
s p e a g
CALIBRATION LABORATORY



中国认可
国际互认
校准
CALIBRATION
CNAS L0570

Add: No.51 Xueyuan Road, Haidian District, Beijing, 100191, China
Tel: +86-10-62304633-2079 Fax: +86-10-62304633-2504
E-mail: cttl@chinattl.com <http://www.chinattl.cn>

Client

Sporton-CN

Certificate No: Z16-97222

CALIBRATION CERTIFICATE

Object: D750V3 - SN: 1099

Calibration Procedure(s):
FD-Z11-003-01
Calibration Procedures for dipole validation kits

Calibration date: November 21, 2016

This calibration Certificate documents the traceability to national standards, which realize the physical units of measurements(SI). The measurements and the uncertainties with confidence probability are given on the following pages and are part of the certificate.

All calibrations have been conducted in the closed laboratory facility: environment temperature(22±3)°C and humidity<70%.

Calibration Equipment used (M&TE critical for calibration)

| Primary Standards | ID # | Cal Date(Calibrated by, Certificate No.) | Scheduled Calibration |
|-------------------------|------------|--|-----------------------|
| Power Meter NRP2 | 101919 | 27-Jun-16 (CTTL, No.J16X04771) | Jun-17 |
| Power sensor NRP-Z91 | 101547 | 27-Jun-16 (CTTL, No.J16X04771) | Jun-17 |
| Reference Probe EX3DV4 | SN 7433 | 26-Sep-16(SPEAG,No.EX3-7433_Sep16) | Sep-17 |
| DAE4 | SN 771 | 02-Feb-16(CTTL-SPEAG,No.Z16-97011) | Feb-17 |
| Secondary Standards | ID # | Cal Date(Calibrated by, Certificate No.) | Scheduled Calibration |
| Signal Generator E4438C | MY49071430 | 01-Feb-16 (CTTL, No.J16X00893) | Jan-17 |
| Network Analyzer E5071C | MY46110673 | 26-Jan-16 (CTTL, No.J16X00894) | Jan-17 |

| | Name | Function | Signature |
|----------------|-------------|-----------------------------------|-----------|
| Calibrated by: | Zhao Jing | SAR Test Engineer | |
| Reviewed by: | Qi Dianyuan | SAR Project Leader | |
| Approved by: | Lu Bingsong | Deputy Director of the laboratory | |

Issued: November 26, 2016

This calibration certificate shall not be reproduced except in full without written approval of the laboratory.



In Collaboration with

s p e a g
CALIBRATION LABORATORY

Add: No.51 Xueyuan Road, Haidian District, Beijing, 100191, China
Tel: +86-10-62304633-2079 Fax: +86-10-62304633-2504
E-mail: cttl@chinattl.com Http://www.chinattl.cn

Glossary:

| | |
|-------|--|
| TSL | tissue simulating liquid |
| ConvF | sensitivity in TSL / NORM _{x,y,z} |
| N/A | not applicable or not measured |

Calibration is Performed According to the Following Standards:

- IEEE Std 1528-2013, "IEEE Recommended Practice for Determining the Peak Spatial-Averaged Specific Absorption Rate (SAR) in the Human Head from Wireless Communications Devices: Measurement Techniques", June 2013
- IEC 62209-1, "Procedure to measure the Specific Absorption Rate (SAR) For hand-held devices used in close proximity to the ear (frequency range of 300MHz to 3GHz)", February 2005
- IEC 62209-2, "Procedure to measure the Specific Absorption Rate (SAR) For wireless communication devices used in close proximity to the human body (frequency range of 30MHz to 6GHz)", March 2010
- KDB865664, SAR Measurement Requirements for 100 MHz to 6 GHz

Additional Documentation:

- DASY4/5 System Handbook

Methods Applied and Interpretation of Parameters:

- Measurement Conditions:** Further details are available from the Validation Report at the end of the certificate. All figures stated in the certificate are valid at the frequency indicated.
- Antenna Parameters with TSL:** The dipole is mounted with the spacer to position its feed point exactly below the center marking of the flat phantom section, with the arms oriented parallel to the body axis.
- Feed Point Impedance and Return Loss:** These parameters are measured with the dipole positioned under the liquid filled phantom. The impedance stated is transformed from the measurement at the SMA connector to the feed point. The Return Loss ensures low reflected power. No uncertainty required.
- Electrical Delay:** One-way delay between the SMA connector and the antenna feed point. No uncertainty required.
- SAR measured:** SAR measured at the stated antenna input power.
- SAR normalized:** SAR as measured, normalized to an input power of 1 W at the antenna connector.
- SAR for nominal TSL parameters:** The measured TSL parameters are used to calculate the nominal SAR result.

The reported uncertainty of measurement is stated as the standard uncertainty of Measurement multiplied by the coverage factor $k=2$, which for a normal distribution Corresponds to a coverage probability of approximately 95%.