

## Appendix A: SAR System performance Check Plots

|  |   |
|--|---|
| <p>Photo 1: Measurement System SATIMO</p>  | <p>Photo 2: Right Head Cheek</p>  |
|  A photograph showing a white robotic arm (KUKA) mounted on a yellow stand in a laboratory setting. The arm is positioned over a white mannequin head. Various electronic equipment and cables are visible in the background. |  A close-up photograph of the right side of a white mannequin head, showing the cheek area. The head is mounted on a black and white mechanical fixture.  |
| <p>Photo 3: Right Head Tilt</p>  | <p>Photo 4: Left Head Cheek</p>   |
|  A close-up photograph of the right side of a white mannequin head, showing the cheek area. The head is tilted upwards. It is mounted on a black and white mechanical fixture.   |  A close-up photograph of the left side of a white mannequin head, showing the cheek area. The head is mounted on a black and white mechanical fixture.  |
| <p>Photo 5: Left Head Tilt</p>   | <p>Photo 6: Body-Worn/hotspot Front(10mm)</p>   |
|  A close-up photograph of the left side of a white mannequin head, showing the cheek area. The head is tilted upwards. It is mounted on a black and white mechanical fixture.   |  A close-up photograph of the front of a white mannequin head, showing the forehead area. A vertical ruler is placed next to the head, and a blue probe is visible on the left side. The head is mounted on a black and white mechanical fixture. |

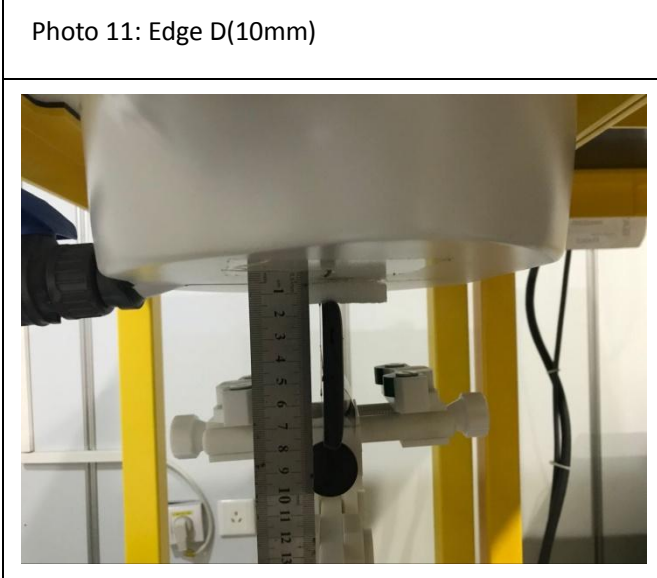
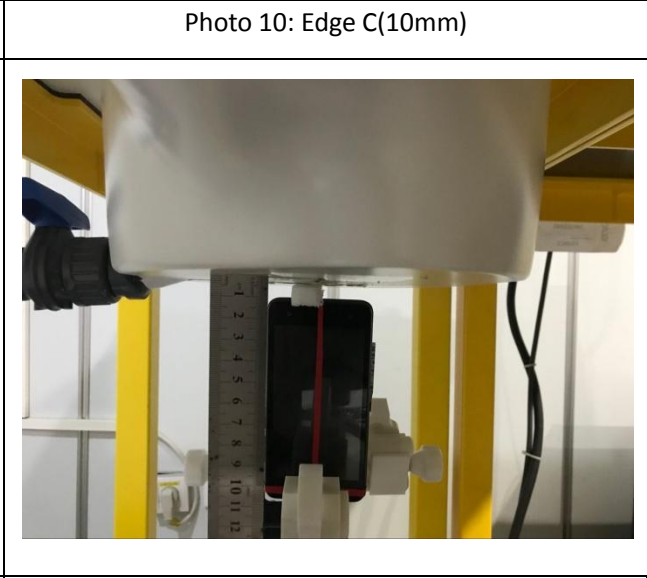
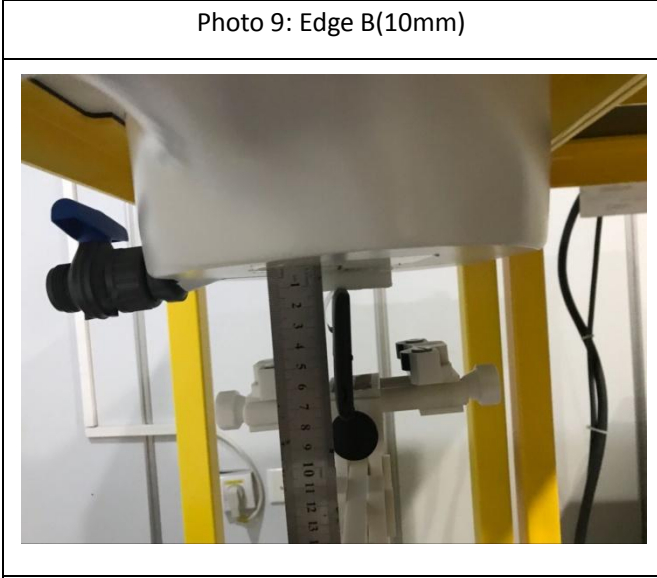
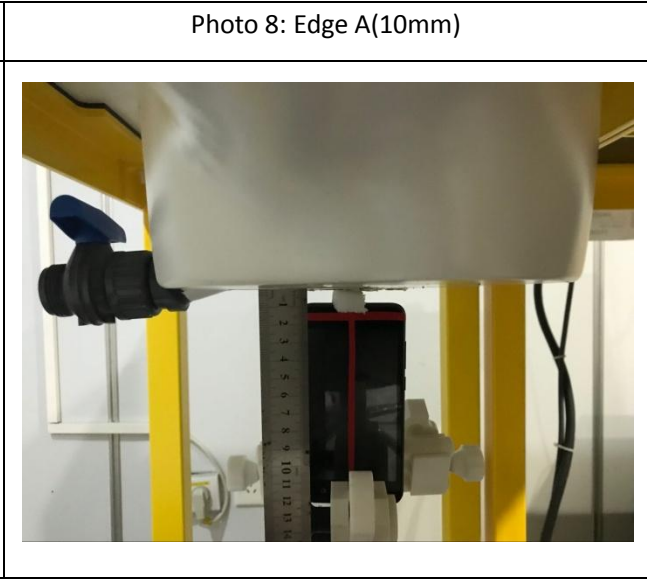
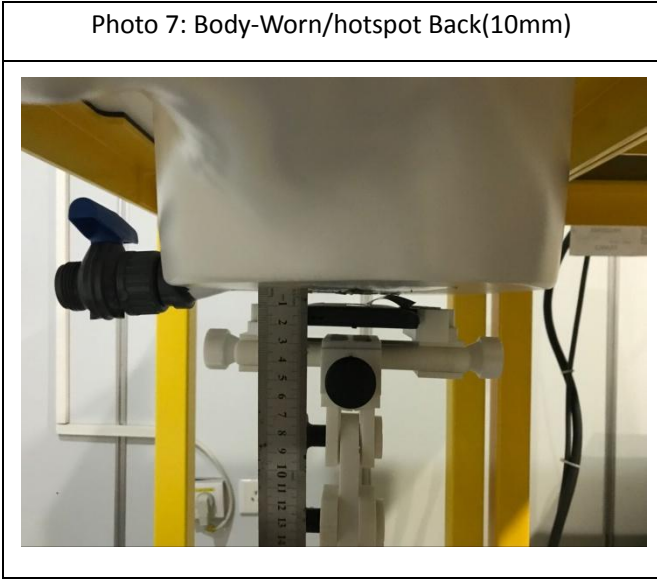


Photo 11: Backward



Battery

