

## Appendix B: SAR Measurement results Plots

Plot	Frequency/Mode	Testing Position and Channel	Test Date
1	CDMA BC0	Right Cheek, Middle	2018-05-16
2	CDMA BC0	Body Back, Middle	2018-05-16
3	CDMA BC1	Right Cheek, Middle	2018-05-17
4	CDMA BC1	Edge C, Middle	2018-05-17
5	CDMA BC10	Right Cheek, Middle	2018-05-22
6	CDMA BC10	Body Back, High	2018-05-22
7	LTE Band 2	Left Cheek, Middle	2018-05-17
8	LTE Band 2	Edge C, High	2018-05-17
9	LTE Band 4	Left Cheek, Middle	2018-05-16
10	LTE Band 4	Edge C, High	2018-05-16
11	LTE Band 5	Left Cheek, Middle	2018-05-16
12	LTE Band 5	Body Back, Middle	2018-05-16
13	LTE Band 12	Left Cheek, Middle	2018-05-19
14	LTE Band 12	Body Back, Middle	2018-05-19
15	LTE Band 13	Right Cheek, Middle	2018-05-19
16	LTE Band 13	Body Back, Middle	2018-05-19
17	LTE Band 25	Right Cheek, Middle	2018-05-17
18	LTE Band 25	Edge C, Middle	2018-05-17
19	LTE Band 26	Left Cheek, Middle	2018-05-19
20	LTE Band 26	Body Back, Middle	2018-05-19
21	LTE Band 41	Left Cheek, Middle	2018-05-21
22	LTE Band 41	Edge C, Middle	2018-05-21
23	WIFI 2.4G	Left Cheek, High	2018-05-15
24	WIFI 2.4G	Body Face, High	2018-05-15

## Plot 1: CDMA BC0 Right Cheek, Middle

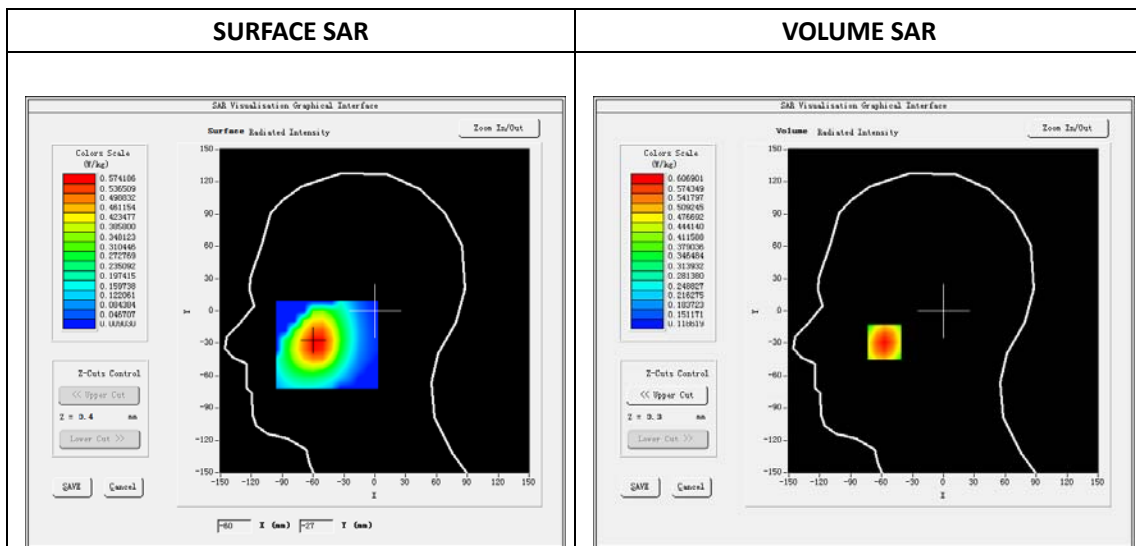
Type: Phone measurement  
 Date of measurement: 05/16/2018  
 Measurement duration: 22 minutes 15 seconds  
 Mobile Phone IMEI number: --

**A. Experimental conditions.**

Area Scan	dx=8mm dy=8mm
ZoomScan	5x5x7,dx=8mm dy=8mm dz=5mm
Phantom	Validation plane
Device Position	Right Cheek
Band	BC0
Channels	384
Signal	OFDM (Duty cycle: 1:1)

**B. SAR Measurement Results**

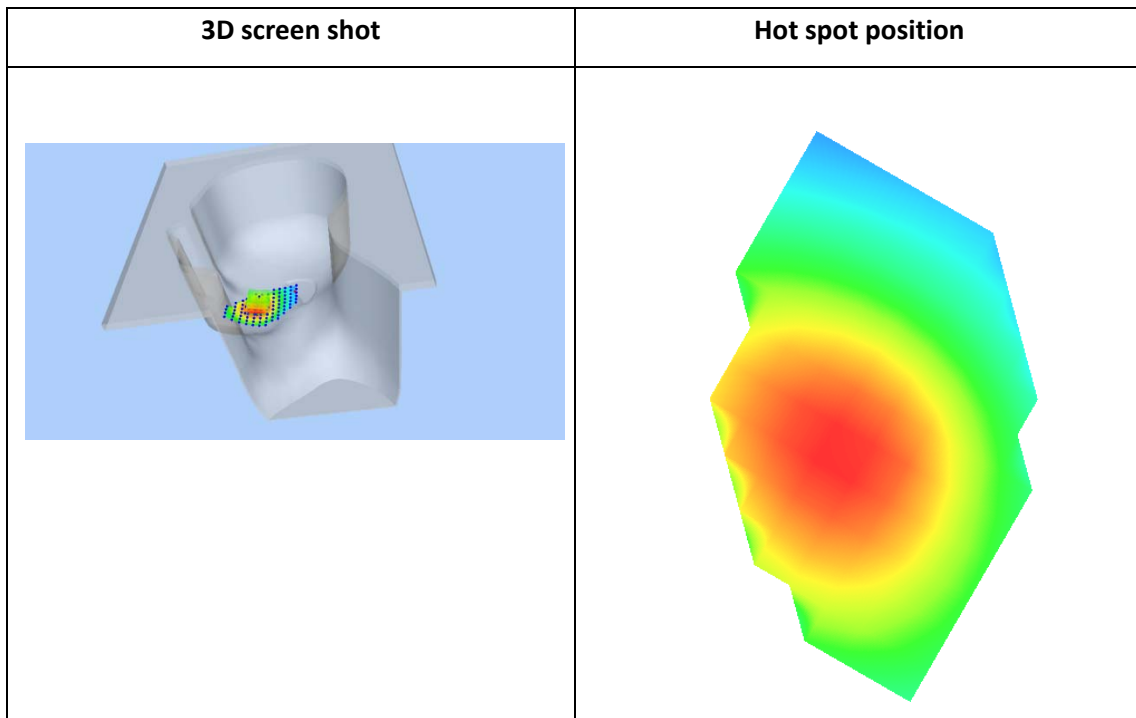
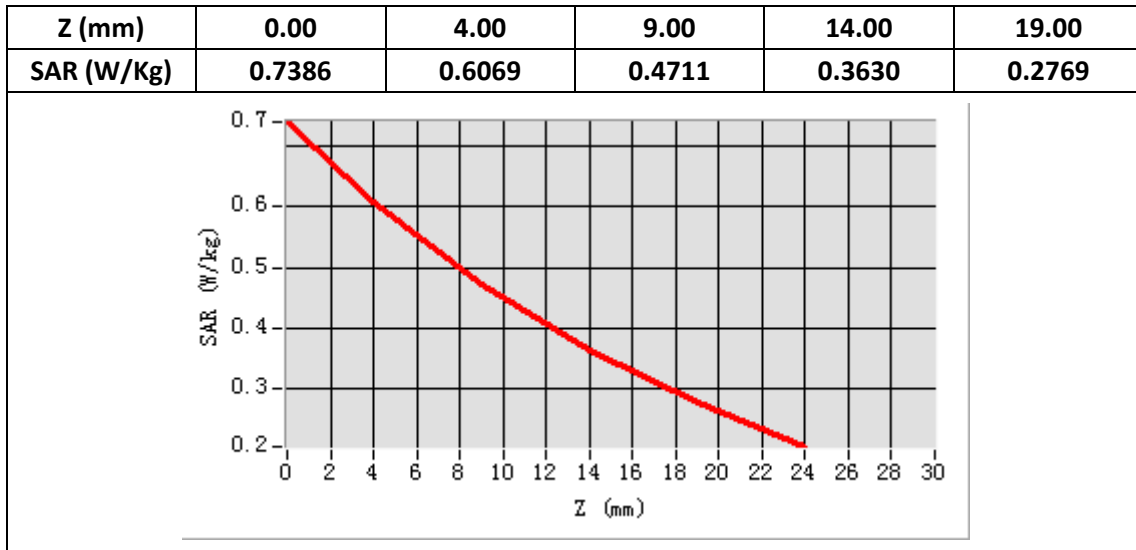
E-Field Probe	SATIMO SN_43/15_EP276
Frequency (MHz)	836.5
Relative permittivity (real part)	41.65
Relative permittivity (imaginary part)	19.44
Conductivity (S/m)	0.88
Variation (%)	2.53
ConvF:	4.99



Maximum location: X=-57.00, Y=-29.00

SAR Peak: 0.74 W/kg

SAR 10g (W/Kg)	0.419518
SAR 1g (W/Kg)	0.583872



**Plot 2:CDMA BC0 , Back, Middle,10mm**

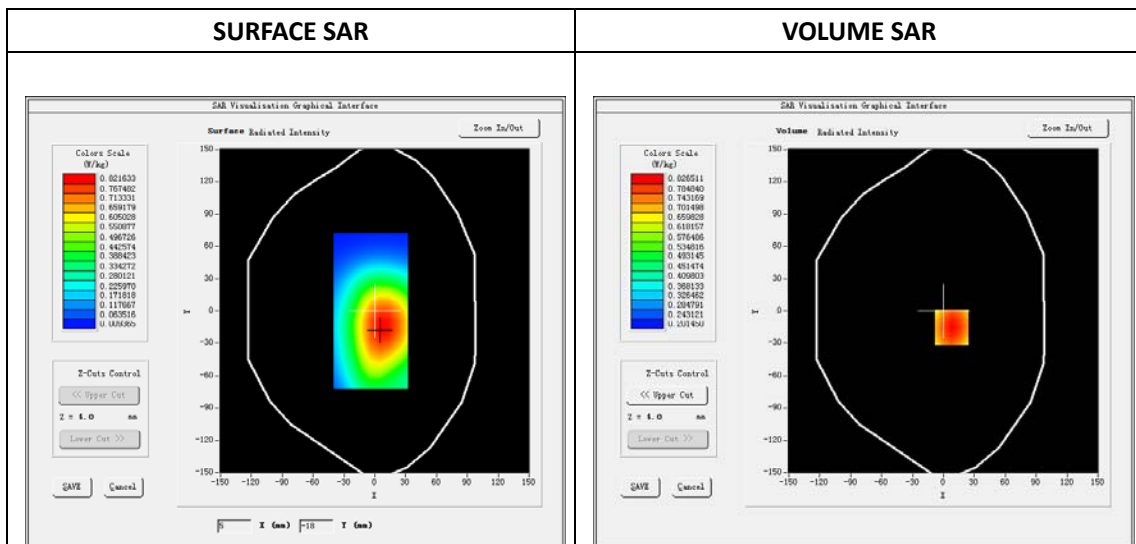
Type: Phone measurement  
 Date of measurement: 05/16/2018  
 Measurement duration: 22 minutes 29 seconds  
 Mobile Phone IMEI number: --

**A. Experimental conditions.**

<b>Area Scan</b>	dx=8mm dy=8mm
<b>ZoomScan</b>	5x5x7,dx=8mm dy=8mm dz=5mm
<b>Phantom</b>	Validation plane
<b>Device Position</b>	Back
<b>Band</b>	BC0
<b>Channels</b>	384
<b>Signal</b>	OFDM (Duty cycle: 1:1)

**B. SAR Measurement Results**

<b>E-Field Probe</b>	SATIMO SN_43/15_EP276
<b>Frequency (MHz)</b>	836.5
<b>Relative permittivity (real part)</b>	55.36
<b>Relative permittivity (imaginary part)</b>	20.47
<b>Conductivity (S/m)</b>	0.93
<b>Variation (%)</b>	0.43
<b>ConvF:</b>	5.18

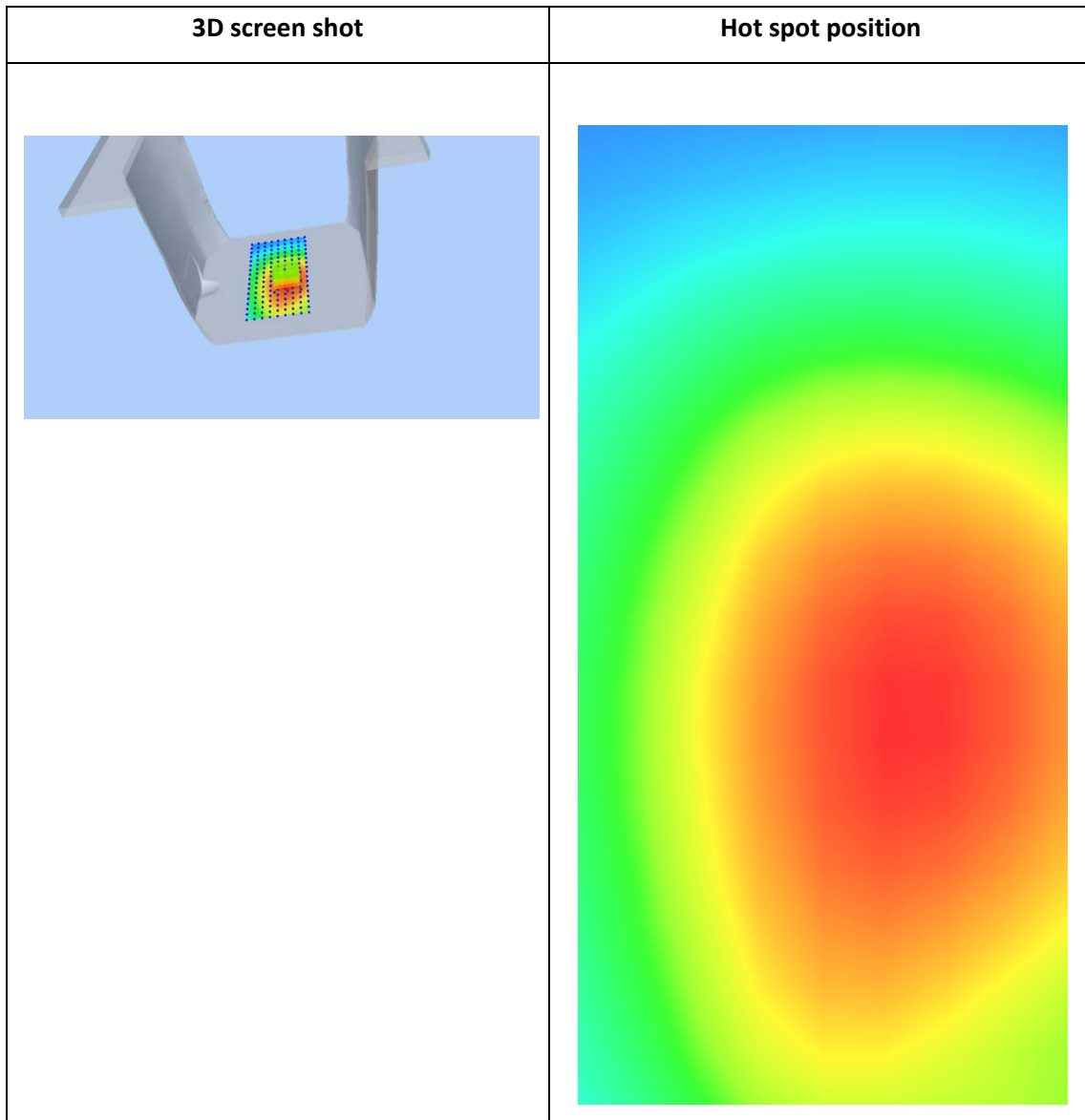
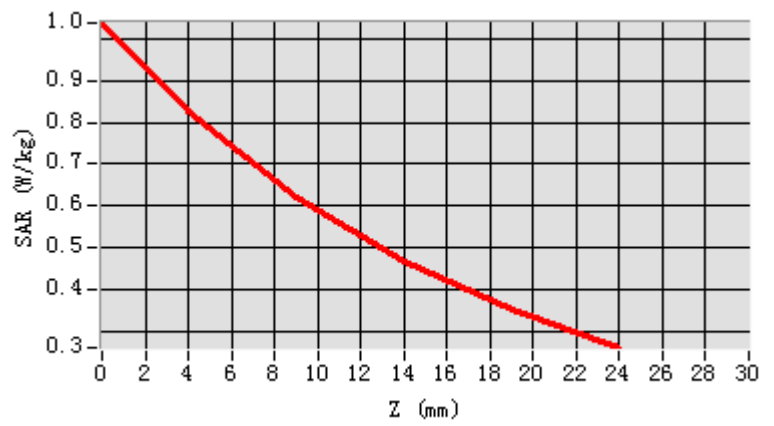


**Maximum location: X=8.00, Y=-15.00**

**SAR Peak: 1.04 W/kg**

<b>SAR 10g (W/Kg)</b>	0.579009
<b>SAR 1g (W/Kg)</b>	0.800388

Z (mm)	0.00	4.00	9.00	14.00	19.00
SAR (W/Kg)	1.0383	0.8265	0.6195	0.4654	0.3505



### Plot 3: CMDA BC1 Right Cheek, Middle

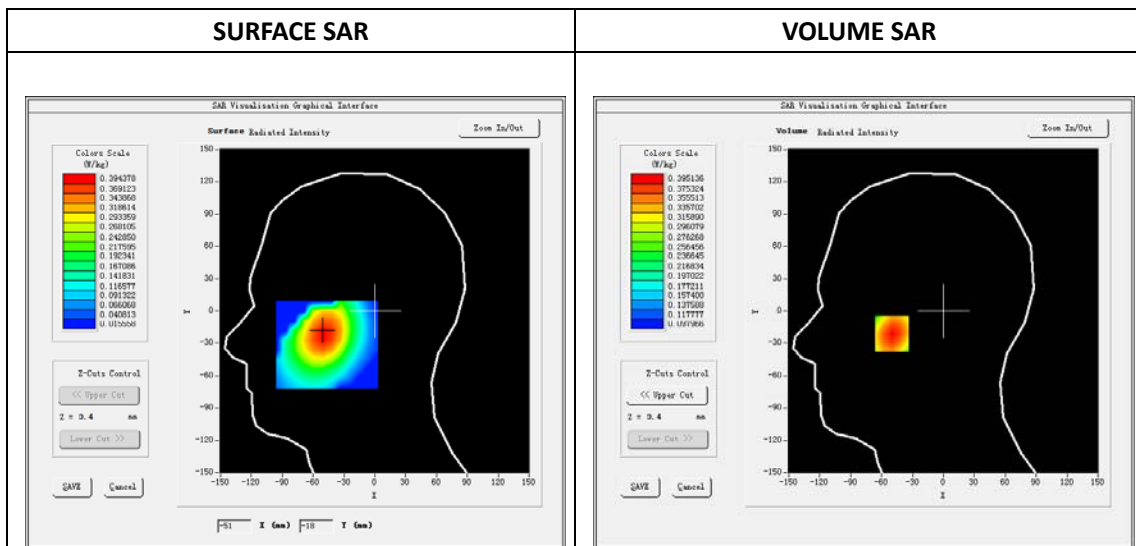
Type: Phone measurement  
 Date of measurement: 05/17/2018  
 Measurement duration: 22 minutes 27 seconds  
 Mobile Phone IMEI number: --

**A. Experimental conditions.**

<b>Area Scan</b>	dx=8mm dy=8mm
<b>ZoomScan</b>	5x5x7,dx=8mm dy=8mm dz=5mm
<b>Phantom</b>	Validation plane
<b>Device Position</b>	Right Cheek
<b>Band</b>	BC1
<b>Channels</b>	600
<b>Signal</b>	OFDM (Duty cycle: 1:1)

**B. SAR Measurement Results**

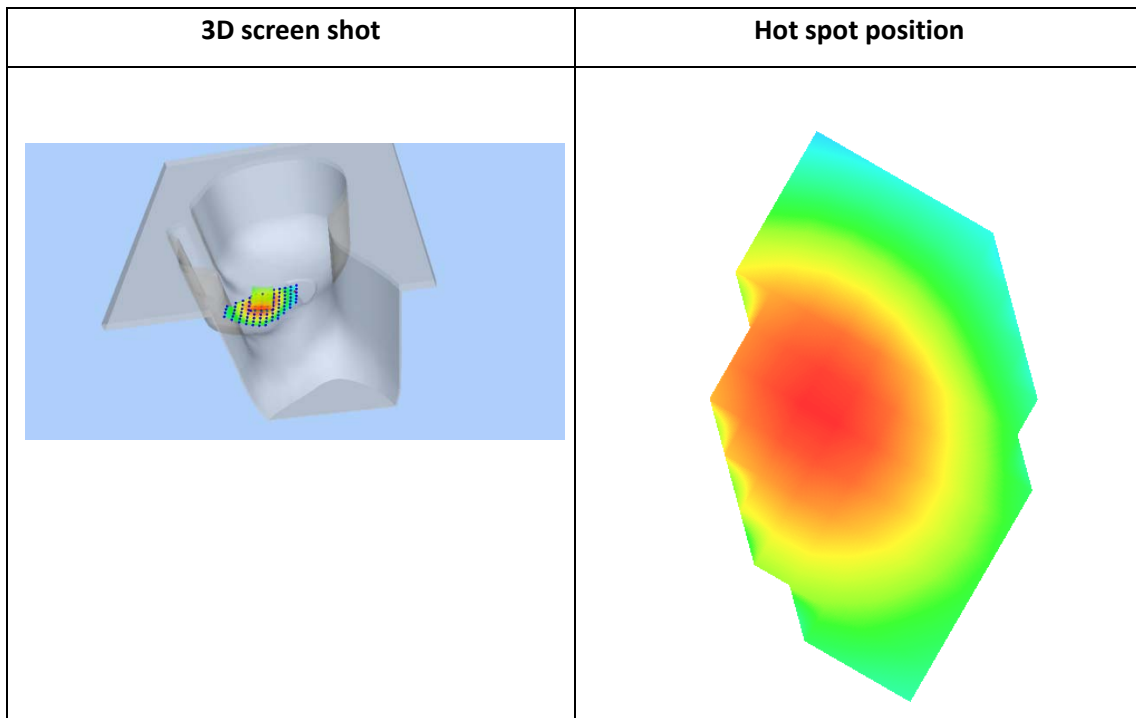
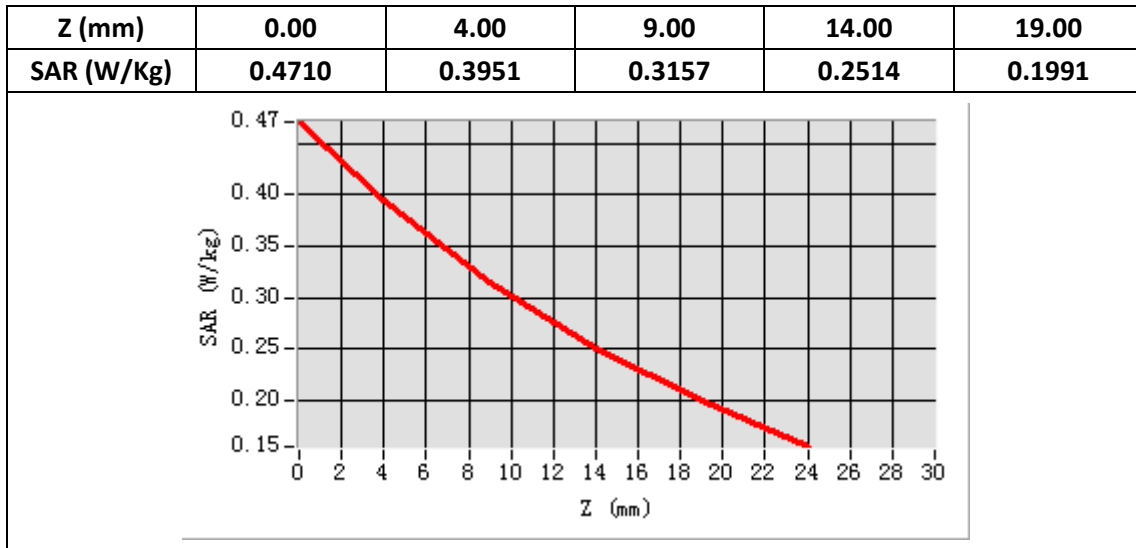
<b>E-Field Probe</b>	SATIMO SN_43/15_EP276
<b>Frequency (MHz)</b>	1880
<b>Relative permittivity (real part)</b>	41.18
<b>Relative permittivity (imaginary part)</b>	12.76
<b>Conductivity (S/m)</b>	1.34
<b>Variation (%)</b>	-1.04
<b>ConvF:</b>	4.73



**Maximum location: X=-50.00, Y=-21.00**

**SAR Peak: 0.47 W/kg**

<b>SAR 10g (W/Kg)</b>	0.387539
<b>SAR 1g (W/Kg)</b>	0.451213



**Plot 4:CDMA BC1 , Back, Middle,10mm**

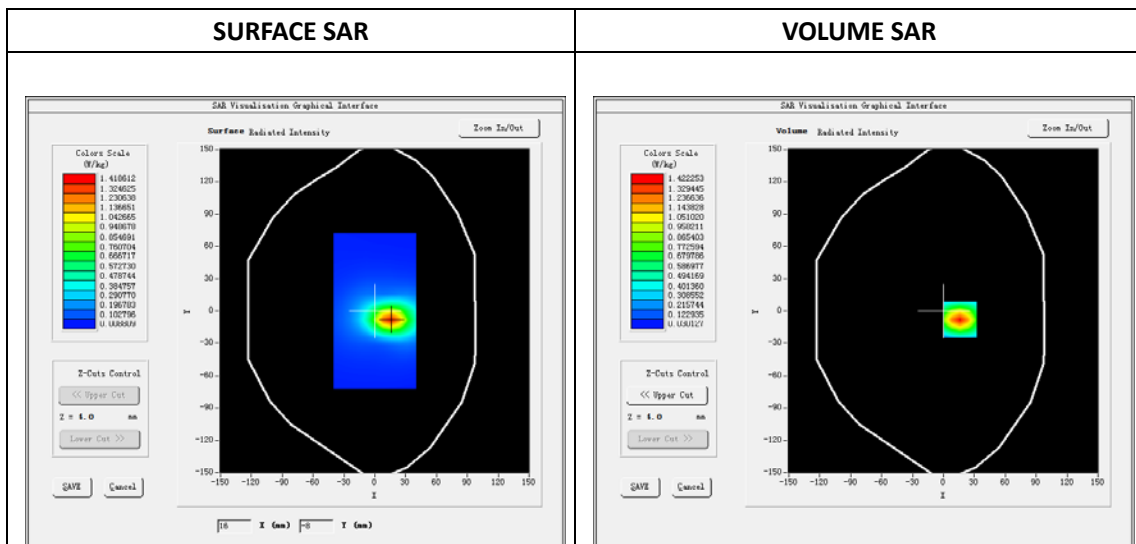
Type: Phone measurement  
 Date of measurement: 05/17/2018  
 Measurement duration: 22 minutes 29 seconds  
 Mobile Phone IMEI number: --

**A. Experimental conditions.**

<b>Area Scan</b>	dx=8mm dy=8mm
<b>ZoomScan</b>	5x5x7,dx=8mm dy=8mm dz=5mm
<b>Phantom</b>	Validation plane
<b>Device Position</b>	Back
<b>Band</b>	BC1
<b>Channels</b>	600
<b>Signal</b>	OFDM (Duty cycle: 1:1)

**B. SAR Measurement Results**

<b>E-Field Probe</b>	SATIMO SN_43/15_EP276
<b>Frequency (MHz)</b>	1880
<b>Relative permittivity (real part)</b>	50.94
<b>Relative permittivity (imaginary part)</b>	14.16
<b>Conductivity (S/m)</b>	1.49
<b>Variation (%)</b>	-1.12
<b>ConvF:</b>	4.83



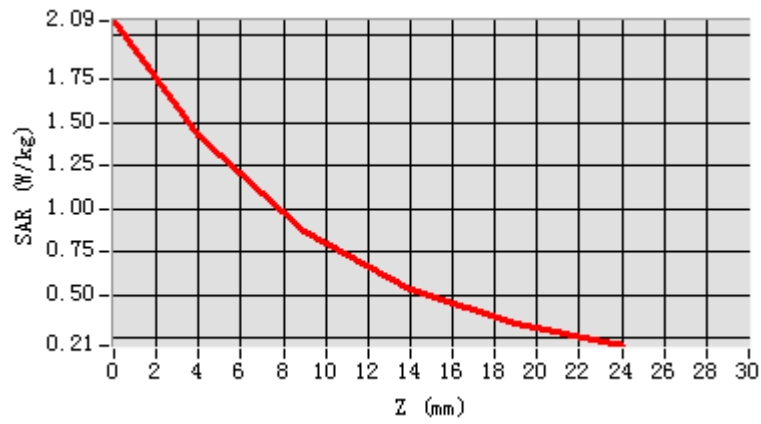
Maximum location: X=16.00, Y=-8.00

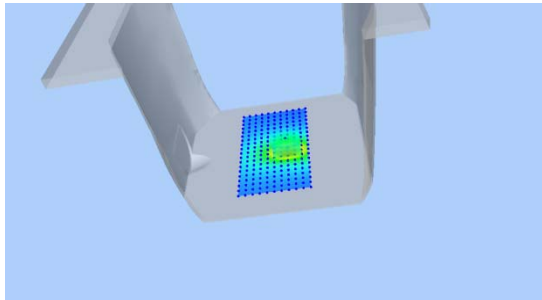
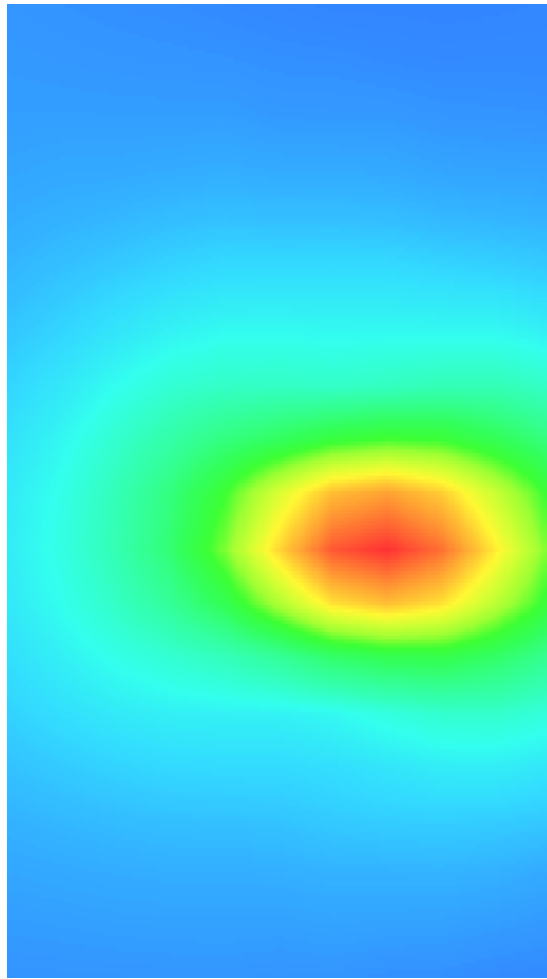
SAR Peak: 2.08 W/kg

<b>SAR 10g (W/Kg)</b>	0.684752
<b>SAR 1g (W/Kg)</b>	1.298043



Z (mm)	0.00	4.00	9.00	14.00	19.00
SAR (W/Kg)	2.0856	1.4223	0.8686	0.5342	0.3374



3D screen shot	Hot spot position
	

## Plot 5: CDMA BC10 Right Cheek, Middle

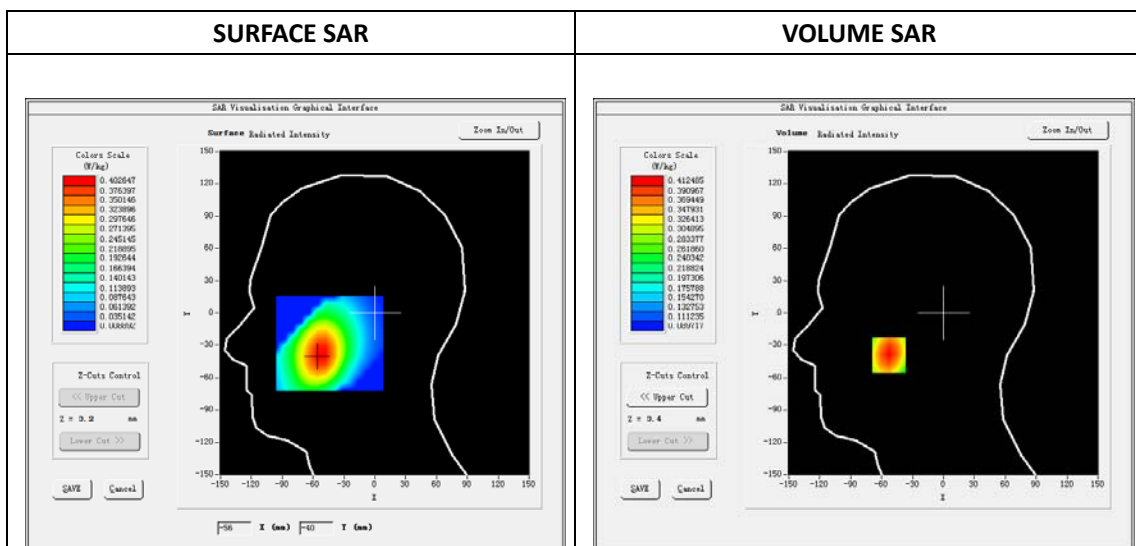
Type: Phone measurement  
 Date of measurement: 05/16/2018  
 Measurement duration: 22 minutes 27 seconds  
 Mobile Phone IMEI number: --

**A. Experimental conditions.**

<b>Area Scan</b>	dx=8mm dy=8mm
<b>ZoomScan</b>	5x5x7,dx=8mm dy=8mm dz=5mm
<b>Phantom</b>	Validation plane
<b>Device Position</b>	Right Cheek
<b>Band</b>	BC10
<b>Channels</b>	580
<b>Signal</b>	OFDM (Duty cycle: 1:1)

**B. SAR Measurement Results**

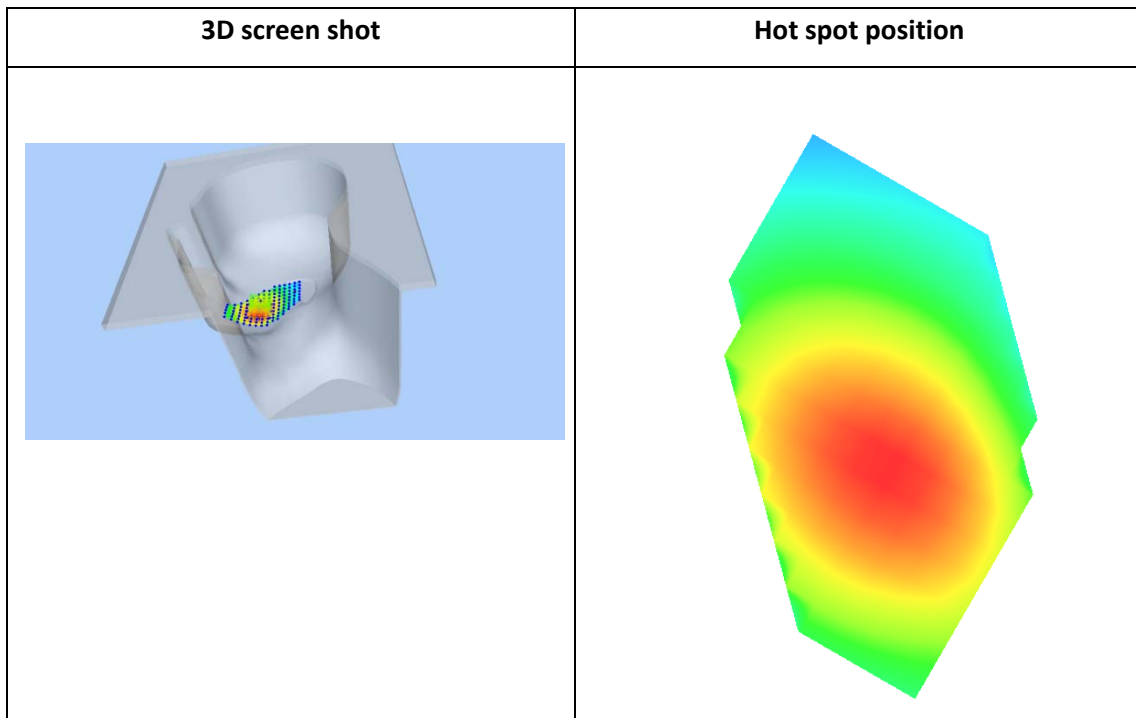
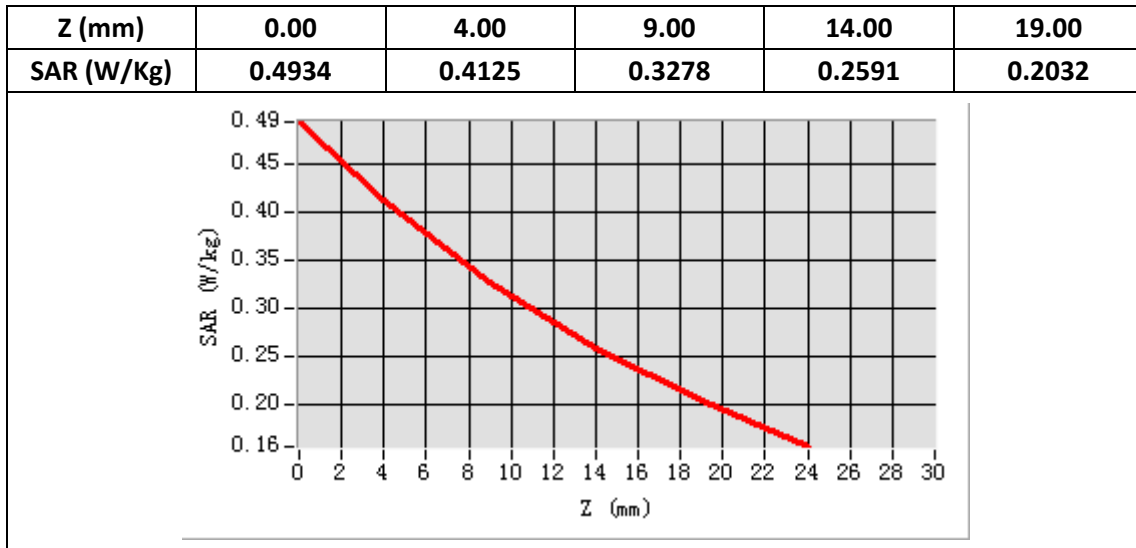
<b>E-Field Probe</b>	SATIMO SN_43/15_EP276
<b>Frequency (MHz)</b>	820.5
<b>Relative permittivity (real part)</b>	41.65
<b>Relative permittivity (imaginary part)</b>	19.44
<b>Conductivity (S/m)</b>	0.88
<b>Variation (%)</b>	1.93
<b>ConvF:</b>	4.99



**Maximum location: X=-53.00, Y=-39.00**

**SAR Peak: 0.49 W/kg**

<b>SAR 10g (W/Kg)</b>	0.292495
<b>SAR 1g (W/Kg)</b>	0.396193



**Plot 6:CDMA BC10 , Back, Middle,10mm**

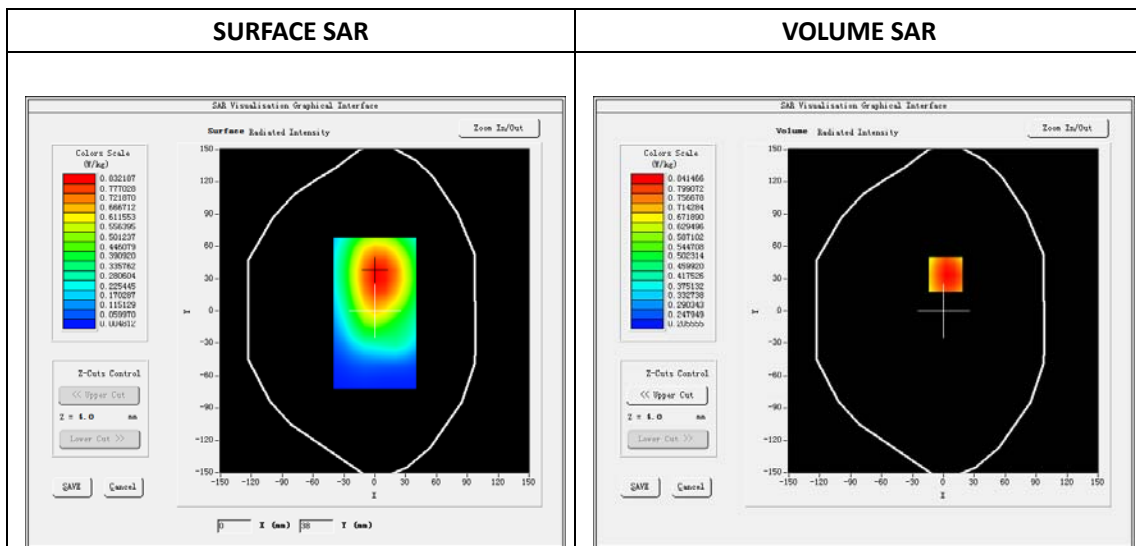
Type: Phone measurement  
 Date of measurement: 05/16/2018  
 Measurement duration: 22 minutes 29 seconds  
 Mobile Phone IMEI number: --

**A. Experimental conditions.**

<b>Area Scan</b>	dx=8mm dy=8mm
<b>ZoomScan</b>	5x5x7,dx=8mm dy=8mm dz=5mm
<b>Phantom</b>	Validation plane
<b>Device Position</b>	Back
<b>Band</b>	BC10
<b>Channels</b>	580
<b>Signal</b>	OFDM (Duty cycle: 1:1)

**B. SAR Measurement Results**

<b>E-Field Probe</b>	SATIMO SN_43/15_EP276
<b>Frequency (MHz)</b>	820.5
<b>Relative permittivity (real part)</b>	55.36
<b>Relative permittivity (imaginary part)</b>	20.47
<b>Conductivity (S/m)</b>	0.93
<b>Variation (%)</b>	-0.83
<b>ConvF:</b>	5.18

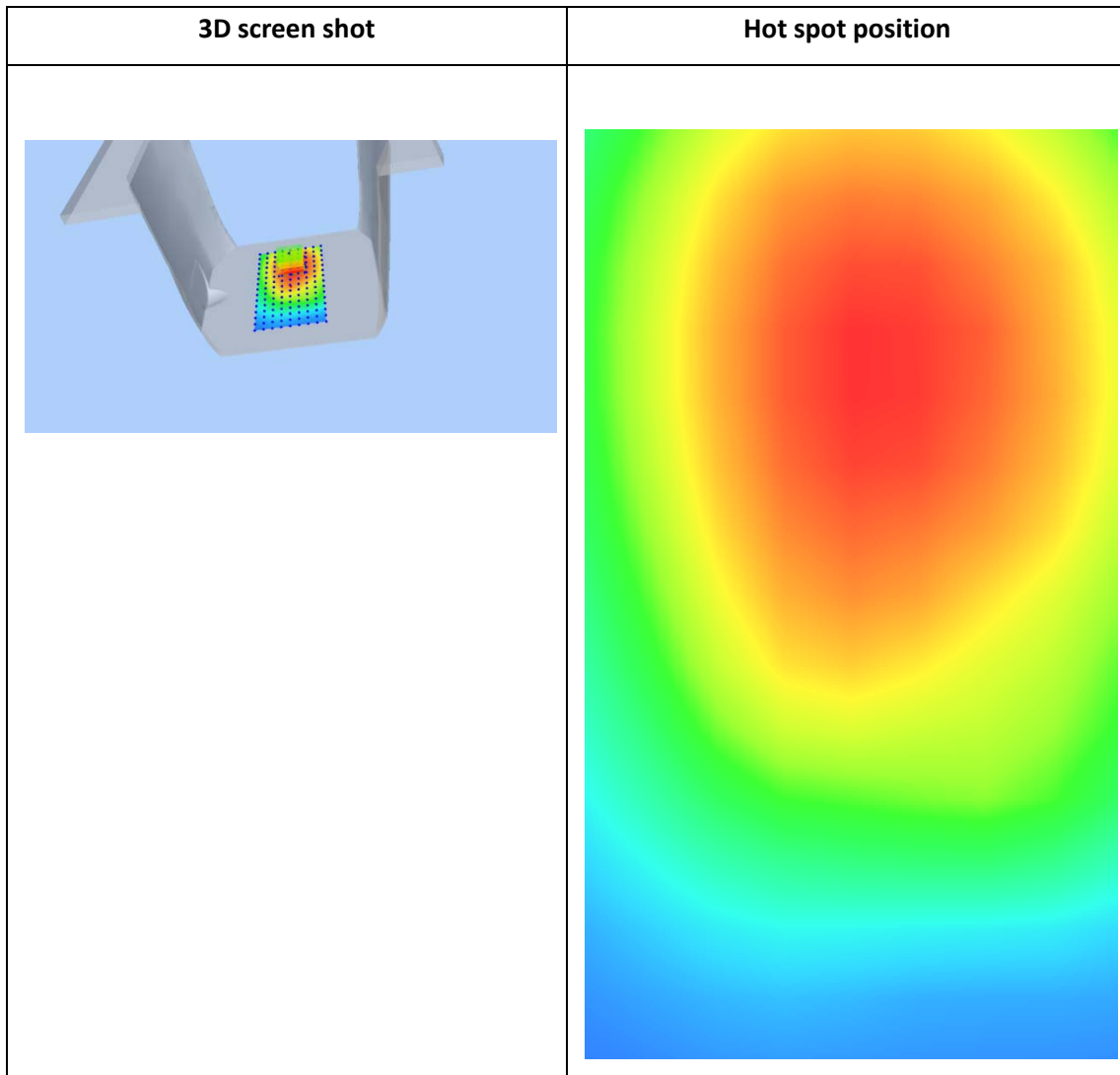
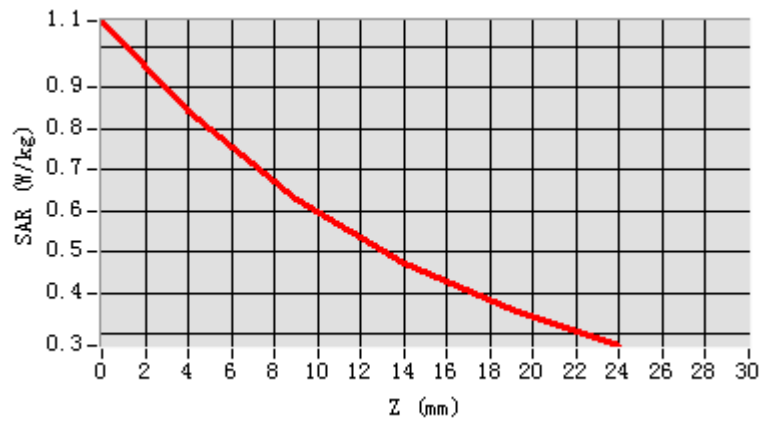


**Maximum location: X=2.00, Y=34.00**

**SAR Peak: 1.07 W/kg**

<b>SAR 10g (W/Kg)</b>	0.601252
<b>SAR 1g (W/Kg)</b>	0.830043

Z (mm)	0.00	4.00	9.00	14.00	19.00
SAR (W/Kg)	1.0621	0.8415	0.6290	0.4740	0.3608



+

## Plot 7: LTE Band2, 20MHz, Left Cheek, Middle

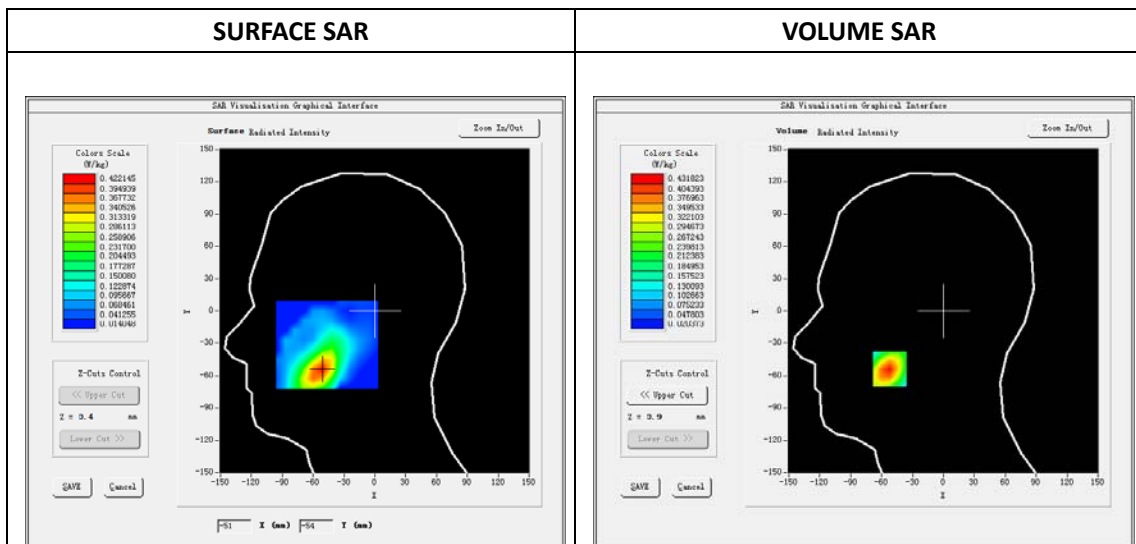
Type: Phone measurement  
 Date of measurement: 05/17/2018  
 Measurement duration: 22 minutes 33 seconds  
 Mobile Phone IMEI number: --

**A. Experimental conditions.**

<b>Area Scan</b>	dx=8mm dy=8mm
<b>ZoomScan</b>	5x5x7,dx=8mm dy=8mm dz=5mm
<b>Phantom</b>	Validation plane
<b>Device Position</b>	Left Cheek
<b>Band</b>	LTE Band 2
<b>Channels</b>	18900
<b>Signal</b>	LTE (Duty cycle: 1:1)

**B. SAR Measurement Results**

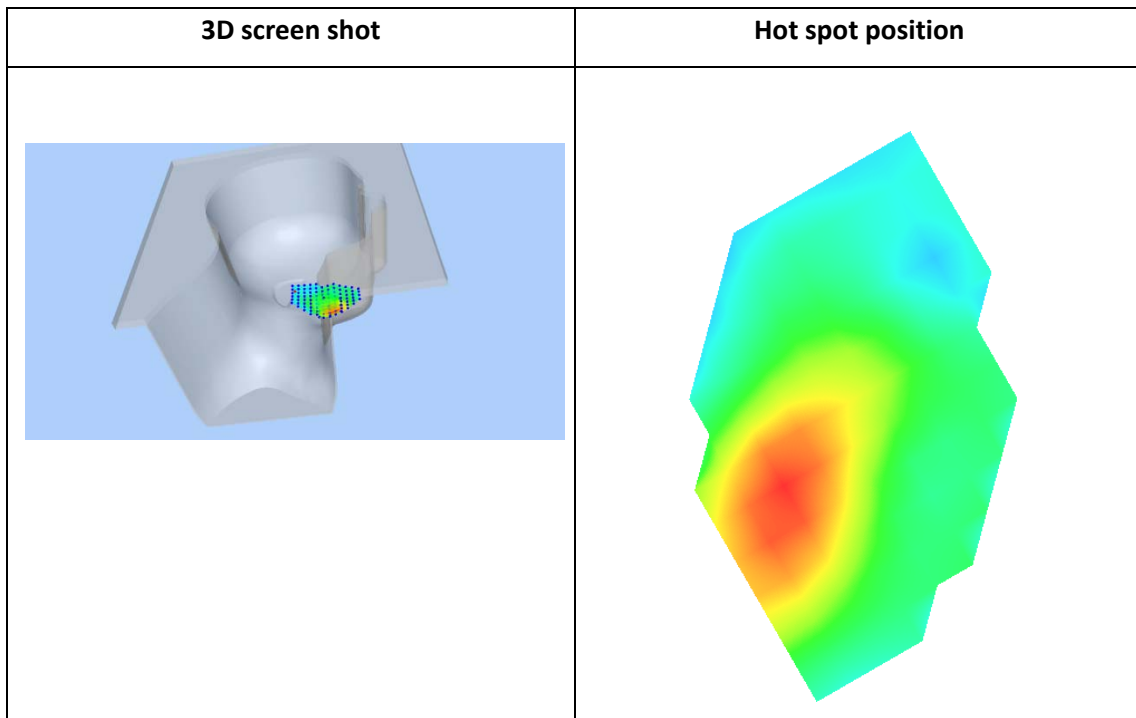
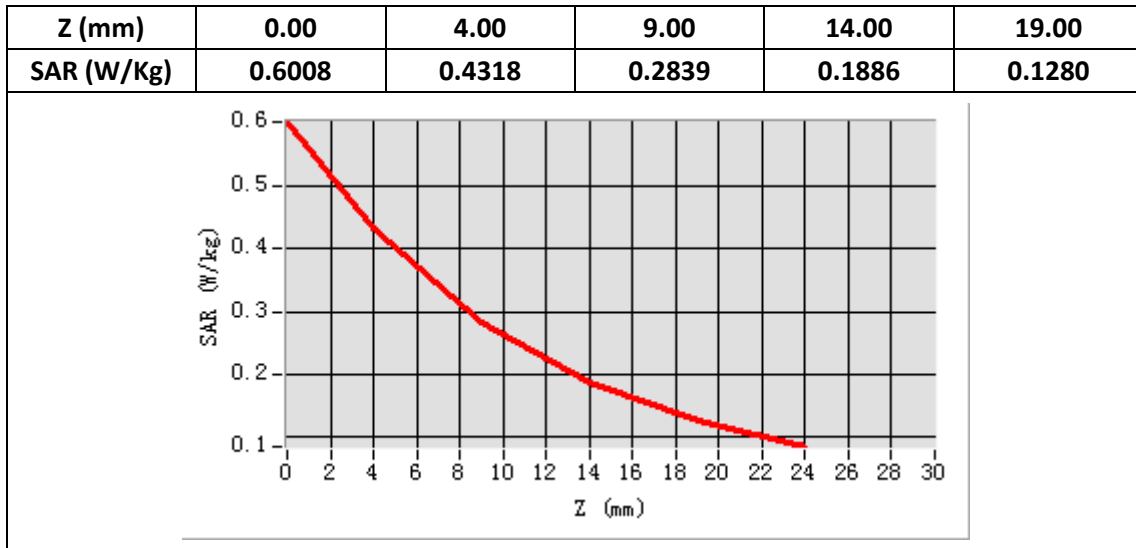
<b>E-Field Probe</b>	SATIMO SN_43/15_EP276
<b>Frequency (MHz)</b>	1880
<b>Relative permittivity (real part)</b>	41.20
<b>Relative permittivity (imaginary part)</b>	12.78
<b>Conductivity (S/m)</b>	1.35
<b>Variation (%)</b>	0.22
<b>ConvF:</b>	4.73



**Maximum location: X=-52.00, Y=-54.00**

**SAR Peak: 0.60 W/kg**

<b>SAR 10g (W/Kg)</b>	0.241370
<b>SAR 1g (W/Kg)</b>	0.405293



**Plot 8: LTE Band2, 20MHz, Edge C High ,10mm**

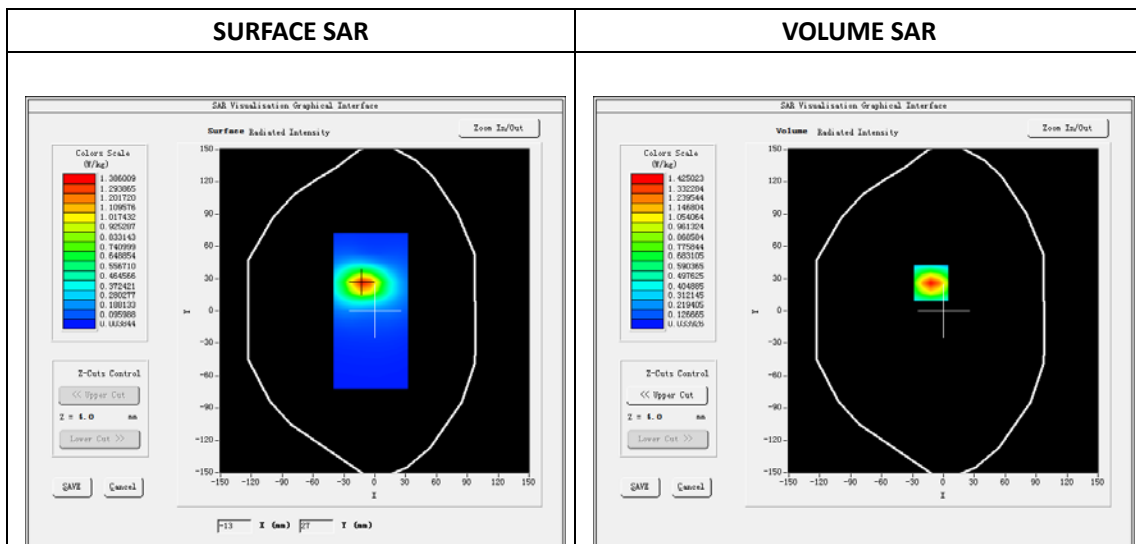
Type: Phone measurement  
 Date of measurement: 05/17/2018  
 Measurement duration: 22 minutes 04 seconds  
 Mobile Phone IMEI number: --

**A. Experimental conditions.**

Area Scan	dx=8mm dy=8mm
ZoomScan	5x5x7,dx=8mm dy=8mm dz=5mm
Phantom	Validation plane
Device Position	Edge C
Band	LTE Band 2
Channels	19100
Signal	LTE (Duty cycle: 1:1)

**B. SAR Measurement Results**

E-Field Probe	SATIMO SN_43/15_EP276
Frequency (MHz)	1900
Relative permittivity (real part)	53.96
Relative permittivity (imaginary part)	14.21
Conductivity (S/m)	1.50
Variation (%)	-0.99
ConvF:	4.83

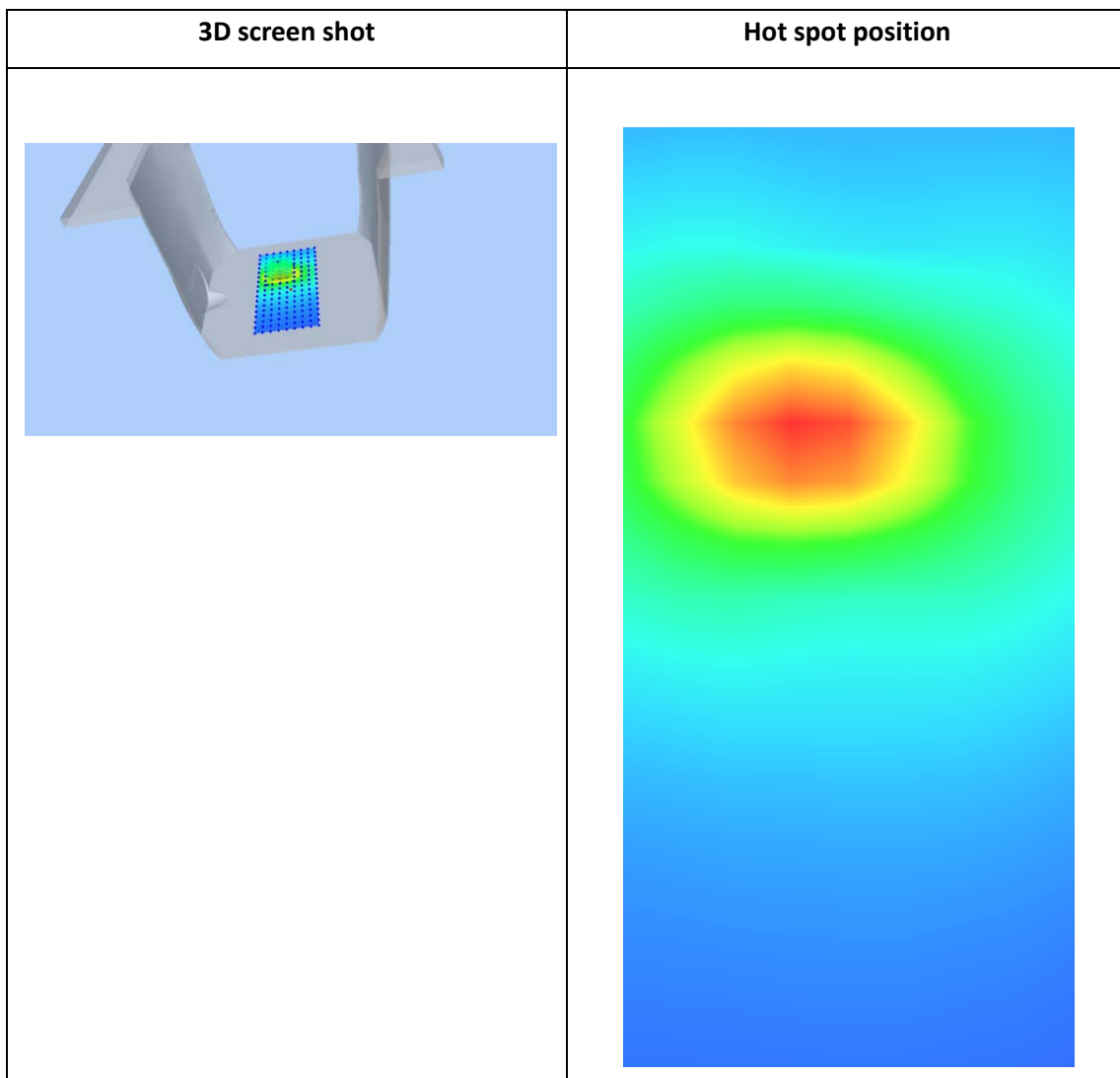
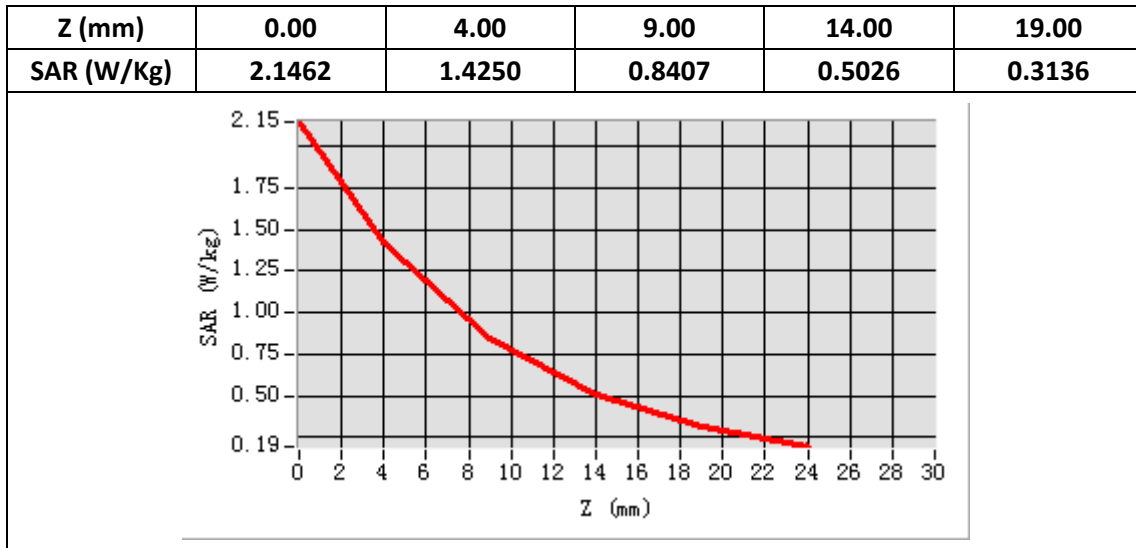


Maximum location: X=-12.00, Y=26.00

SAR Peak: 2.15 W/kg

SAR 10g (W/Kg)	0.688218
SAR 1g (W/Kg)	1.309588





**Plot 9: LTE Band4, 20MHz, Left Cheek Middle**

Type: Phone measurement

Date of measurement: 05/16/2018

Measurement duration: 22 minutes 33 seconds

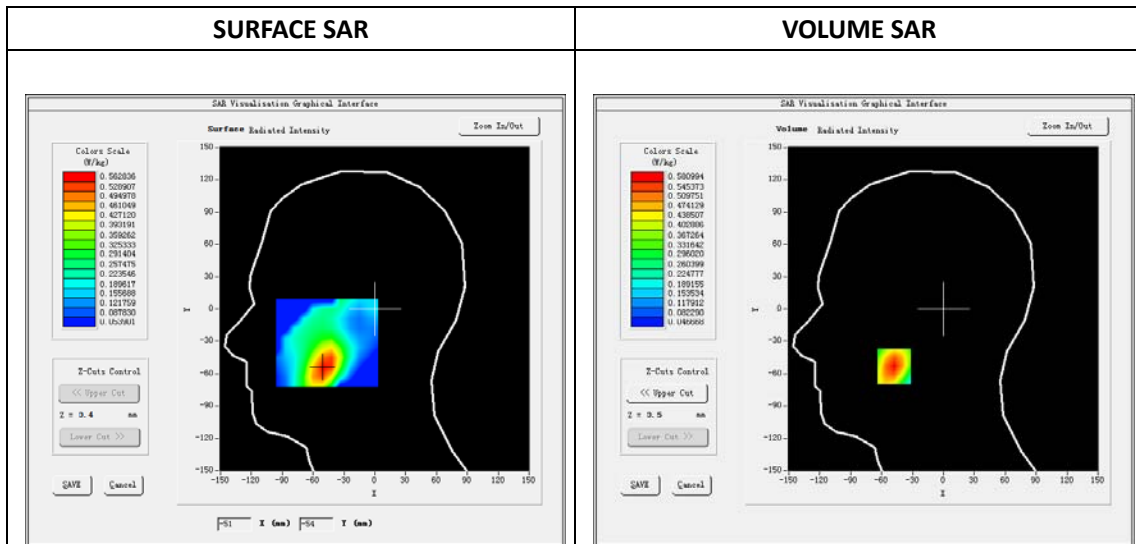
Mobile Phone IMEI number: --

**A. Experimental conditions.**

Area Scan	dx=8mm dy=8mm
ZoomScan	5x5x7,dx=8mm dy=8mm dz=5mm
Phantom	Validation plane
Device Position	Left Cheek
Band	LTE Band 4
Channels	20175
Signal	LTE (Duty cycle: 1:1)

**B. SAR Measurement Results**

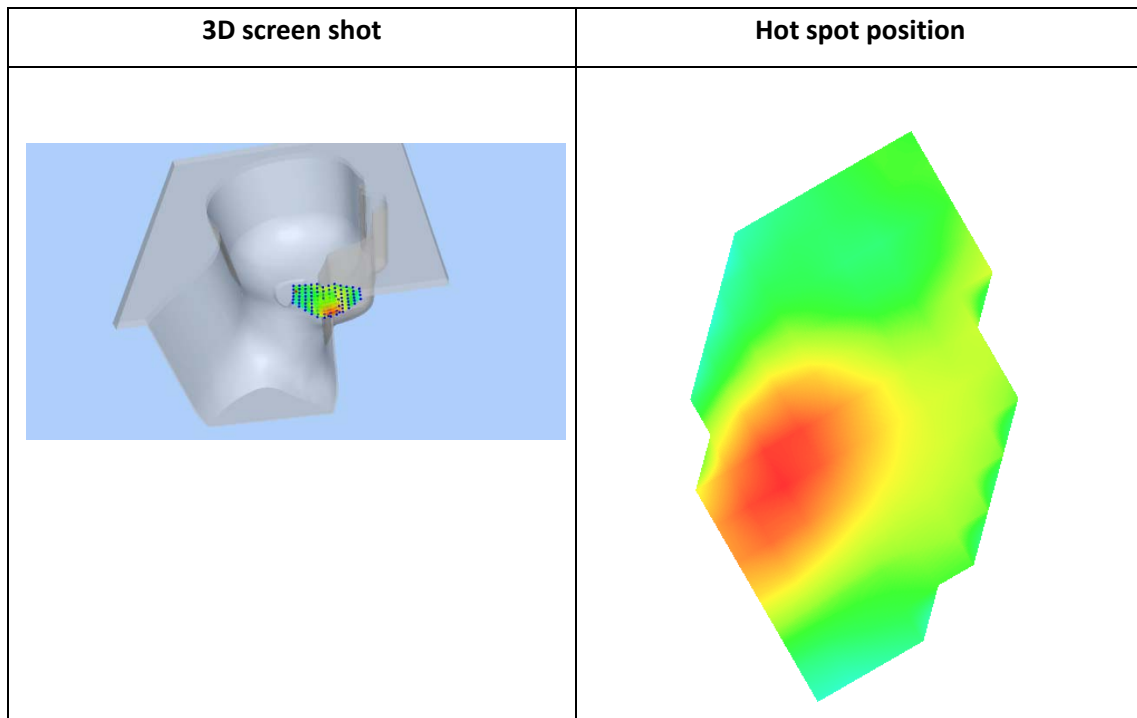
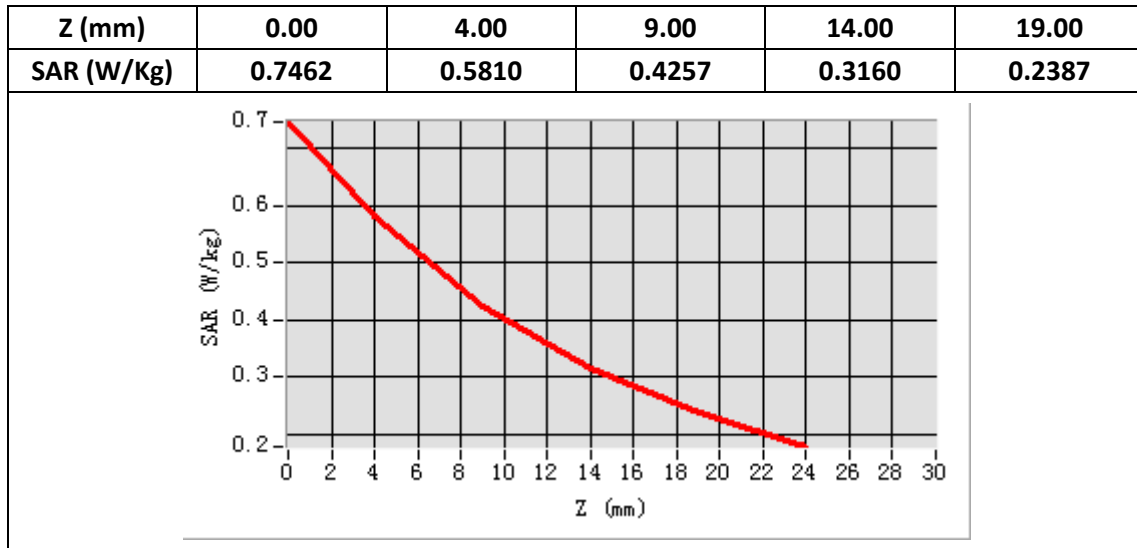
E-Field Probe	SATIMO SN_43/15_EP276
Frequency (MHz)	1732.5
Relative permittivity (real part)	38.88
Relative permittivity (imaginary part)	13.70
Conductivity (S/m)	1.37
Variation (%)	-0.55
ConvF:	4.29



Maximum location: X=-48.00, Y=-53.00

SAR Peak: 0.75 W/kg

SAR 10g (W/Kg)	0.372821
SAR 1g (W/Kg)	0.555380



**Plot 10: LTE Band4, 20MHz,Edge C High,10mm**

Type: Phone measurement

Date of measurement: 05/16/2018

Measurement duration: 22 minutes 32 seconds

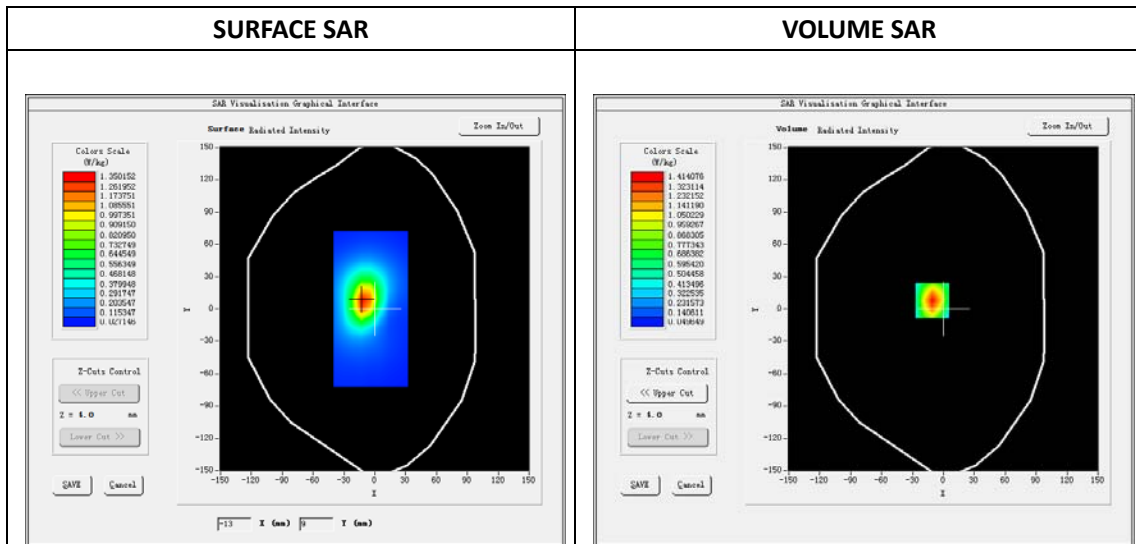
Mobile Phone IMEI number: --

**A. Experimental conditions.**

Area Scan	dx=8mm dy=8mm
ZoomScan	5x5x7,dx=8mm dy=8mm dz=5mm
Phantom	Validation plane
Device Position	Edge C
Band	LTE Band 4
Channels	20300
Signal	LTE (Duty cycle: 1:1)

**B. SAR Measurement Results**

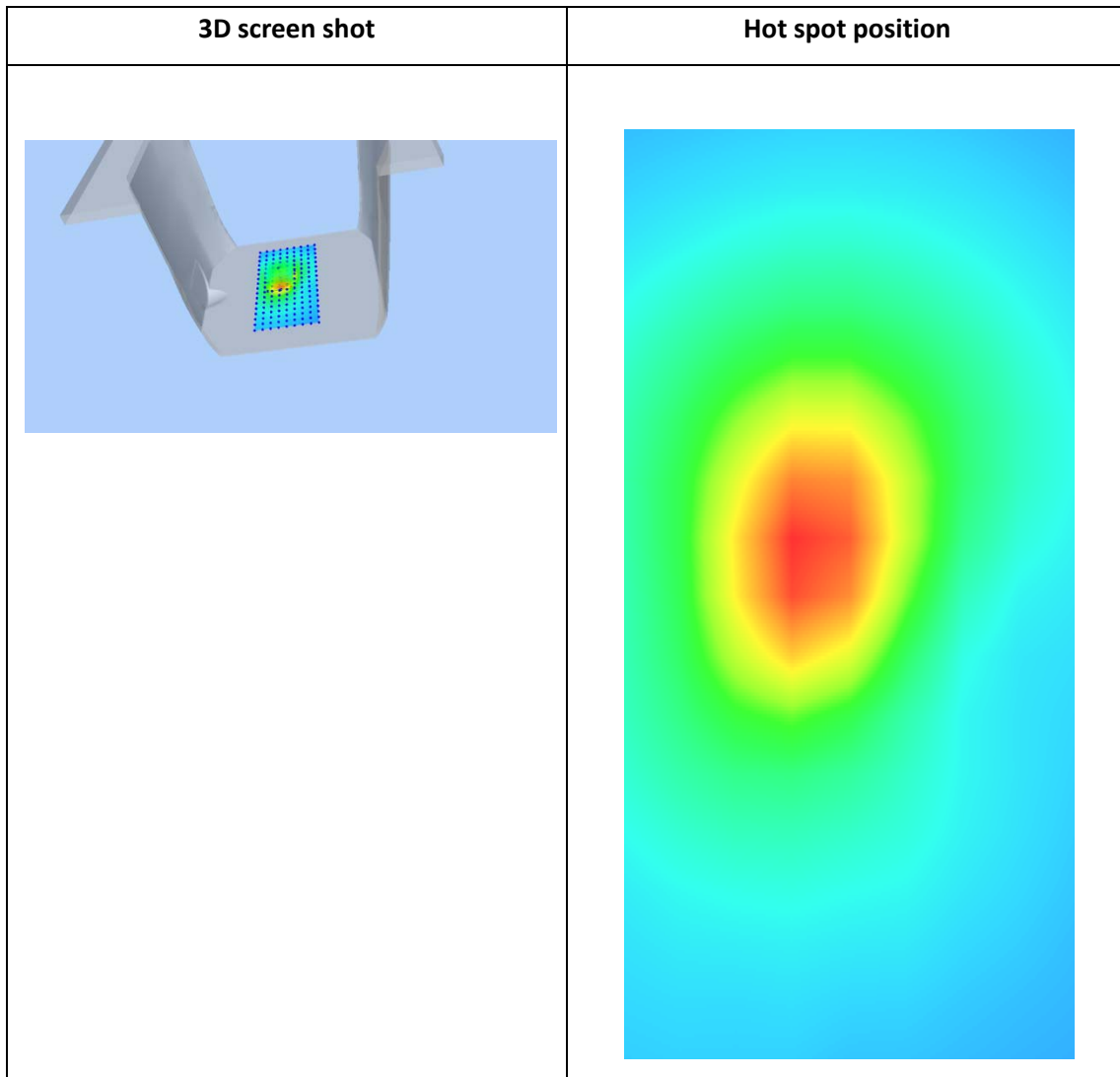
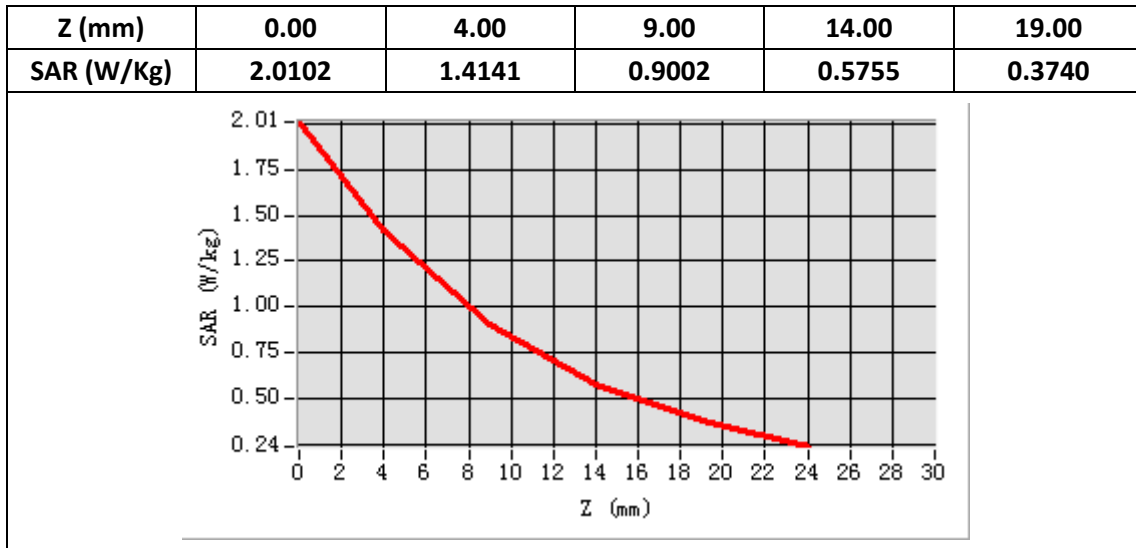
E-Field Probe	SATIMO SN_43/15_EP276
Frequency (MHz)	1745
Relative permittivity (real part)	53.15
Relative permittivity (imaginary part)	14.80
Conductivity (S/m)	1.48
Variation (%)	-0.53
ConvF:	4.43



Maximum location: X=-11.00, Y=8.00

SAR Peak: 2.01 W/kg

SAR 10g (W/Kg)	0.737461
SAR 1g (W/Kg)	1.296797



## Plot 11: LTE Band5, 10MHz, Left Cheek, Middle

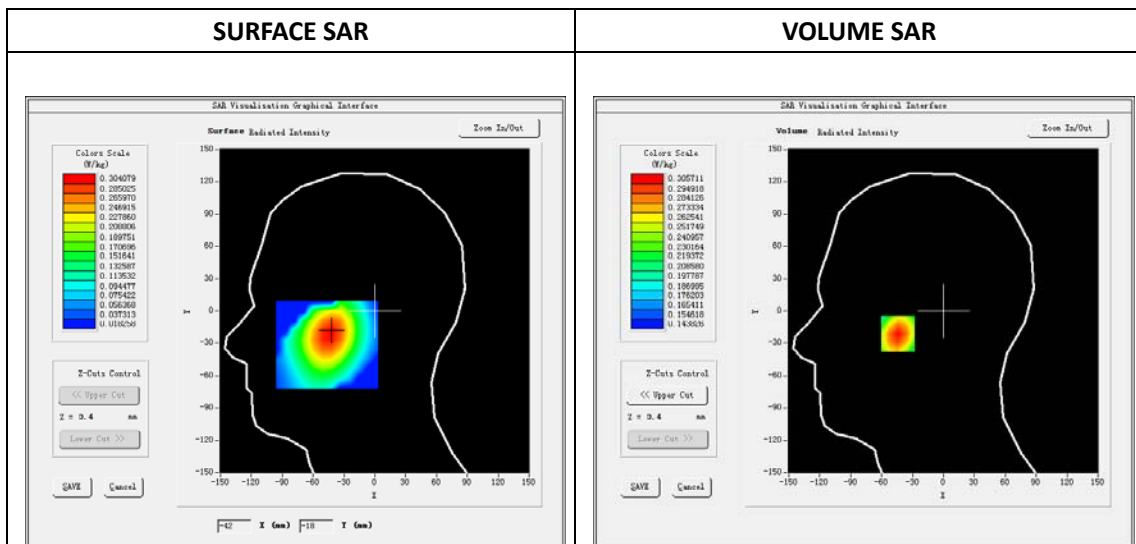
Type: Phone measurement  
 Date of measurement: 05/16/2018  
 Measurement duration: 22 minutes 13 seconds  
 Mobile Phone IMEI number: --

**A. Experimental conditions.**

Area Scan	dx=8mm dy=8mm
ZoomScan	5x5x7,dx=8mm dy=8mm dz=5mm
Phantom	Validation plane
Device Position	Left Cheek
Band	LTE Band 5
Channels	20525
Signal	LTE (Duty cycle: 1:1)

**B. SAR Measurement Results**

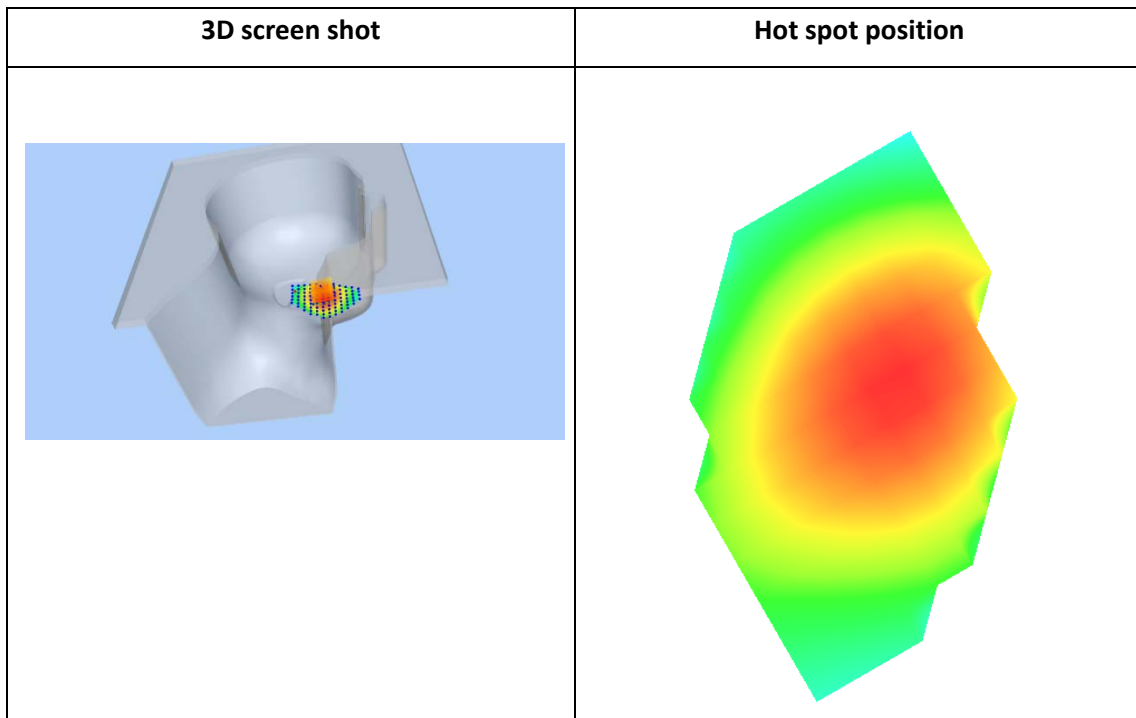
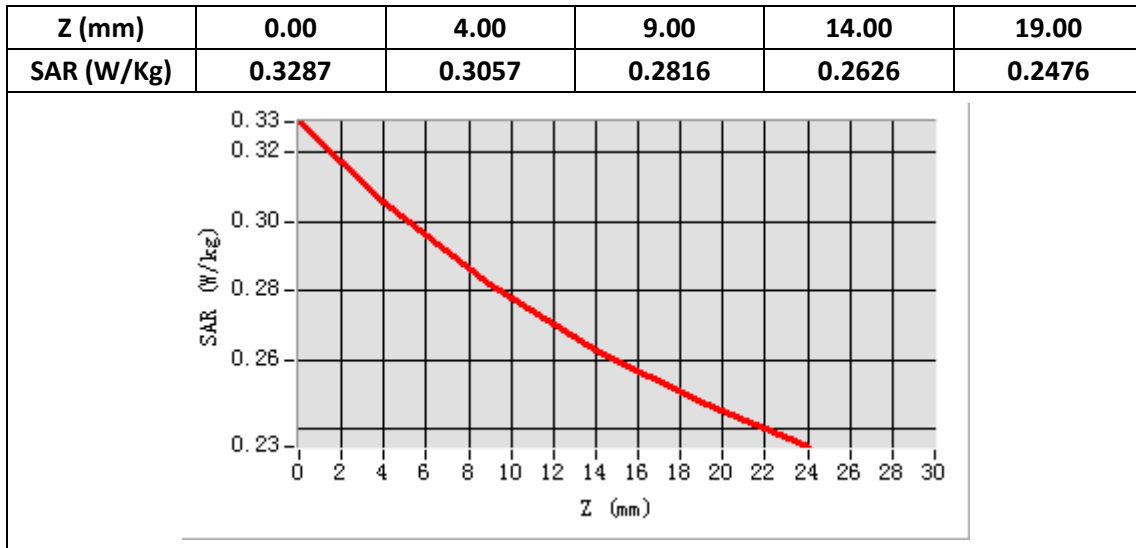
E-Field Probe	SATIMO SN_43/15_EP276
Frequency (MHz)	836.5
Relative permittivity (real part)	41.65
Relative permittivity (imaginary part)	19.44
Conductivity (S/m)	0.88
Variation (%)	-0.61
ConvF:	4.99



Maximum location: X=-44.00, Y=-21.00

SAR Peak: 0.33 W/kg

SAR 10g (W/Kg)	0.264693
SAR 1g (W/Kg)	0.344206



**Plot 12: LTE Band5, 10MHz, Back, Middle,10mm**

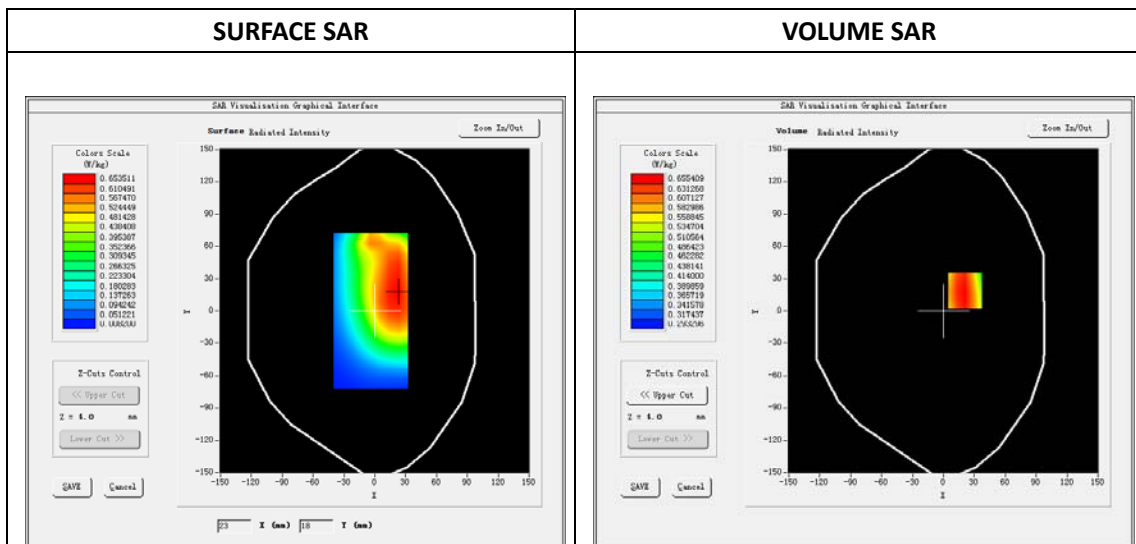
Type: Phone measurement  
 Date of measurement: 05/16/2018  
 Measurement duration: 22 minutes 15 seconds  
 Mobile Phone IMEI number: --

**A. Experimental conditions.**

Area Scan	dx=8mm dy=8mm
ZoomScan	5x5x7,dx=8mm dy=8mm dz=5mm
Phantom	Validation plane
Device Position	Back
Band	LTE Band 5
Channels	20525
Signal	LTE (Duty cycle: 1:1)

**B. SAR Measurement Results**

E-Field Probe	SATIMO SN_43/15_EP276
Frequency (MHz)	836.5
Relative permittivity (real part)	55.36
Relative permittivity (imaginary part)	20.47
Conductivity (S/m)	0.93
Variation (%)	-0.78
ConvF:	5.18

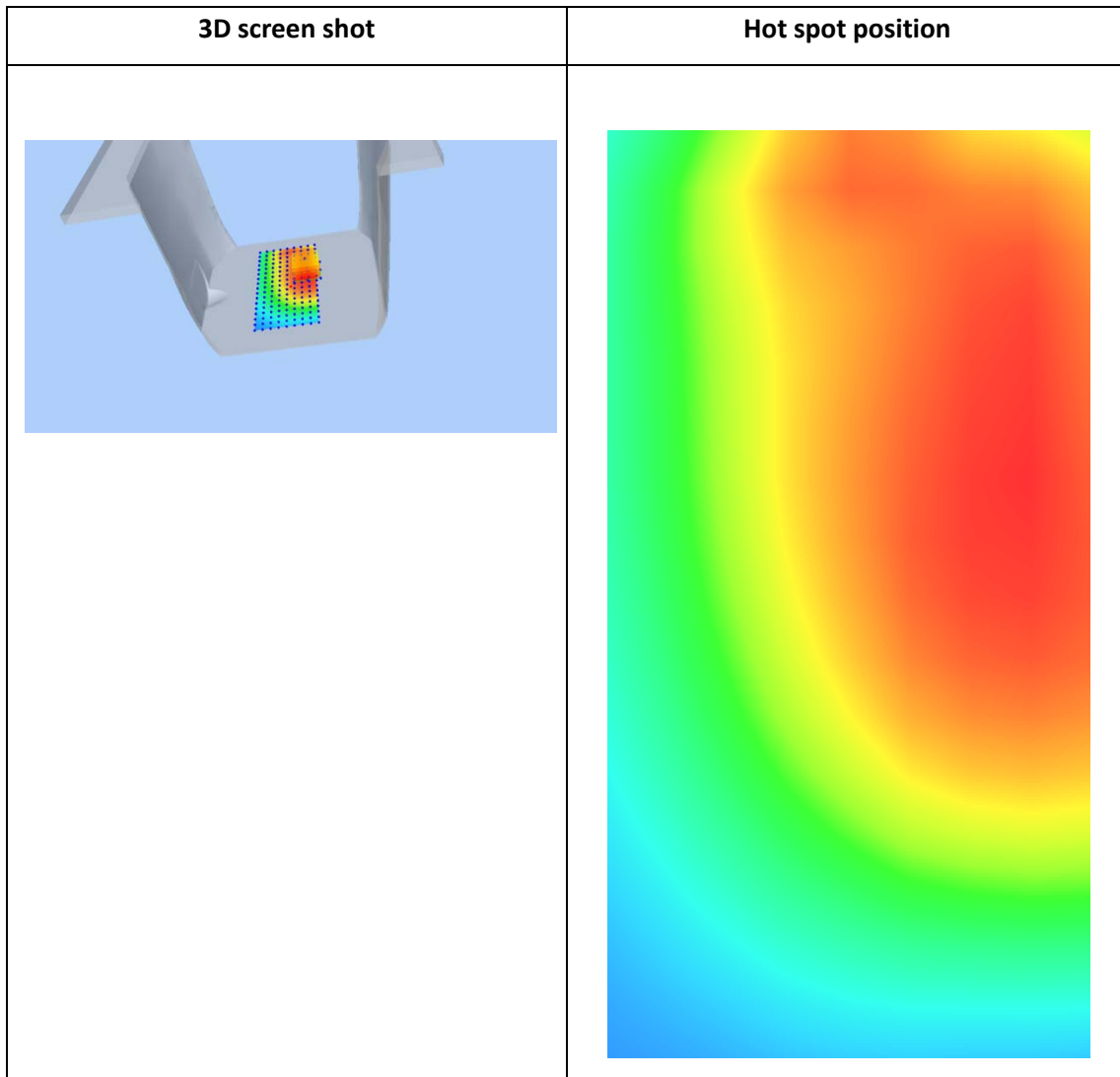
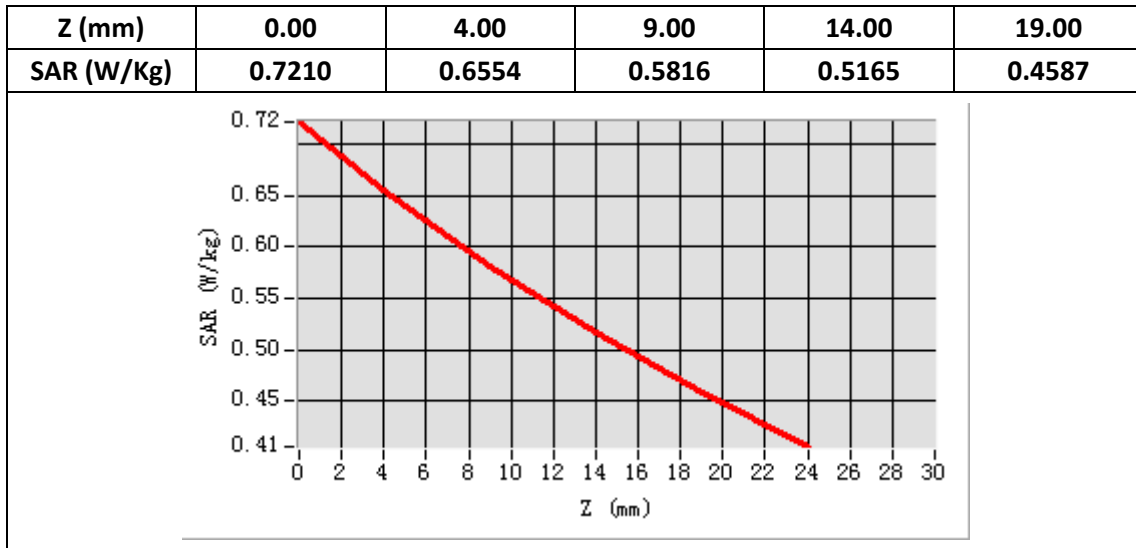


Maximum location: X=21.00, Y=19.00

SAR Peak: 0.72 W/kg

SAR 10g (W/Kg)	0.552552
SAR 1g (W/Kg)	0.648757





**Plot 13: LTE Band12, 10MHz, Left Cheek, Middle**

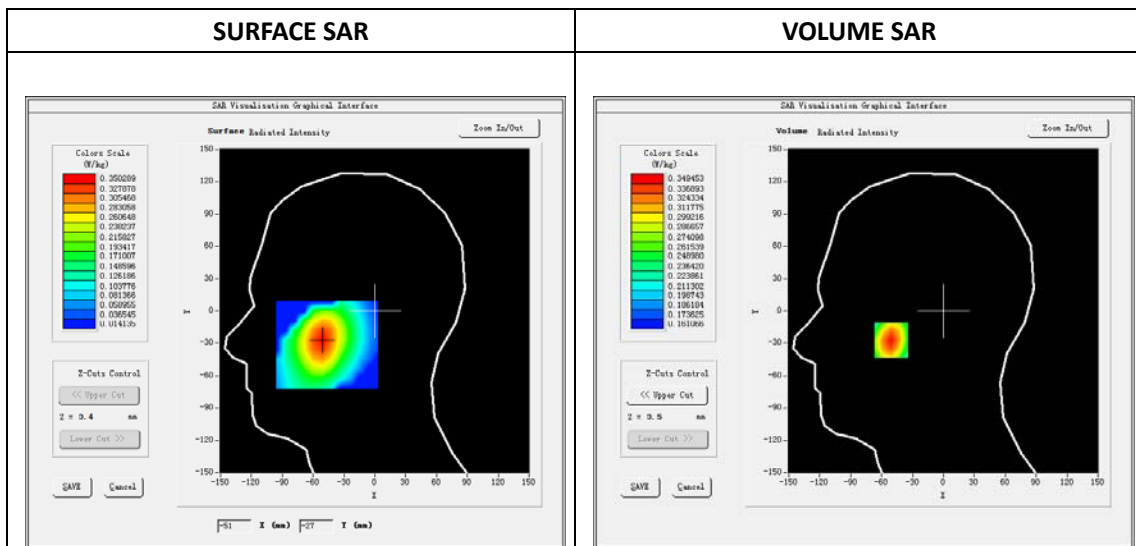
Type: Phone measurement  
 Date of measurement: 05/19/2018  
 Measurement duration: 22 minutes 26 seconds  
 Mobile Phone IMEI number: --

**A. Experimental conditions.**

Area Scan	dx=8mm dy=8mm
ZoomScan	5x5x7,dx=8mm dy=8mm dz=5mm
Phantom	Validation plane
Device Position	Left Cheek
Band	LTE Band 12
Channels	23095
Signal	LTE (Duty cycle: 1:1)

**B. SAR Measurement Results**

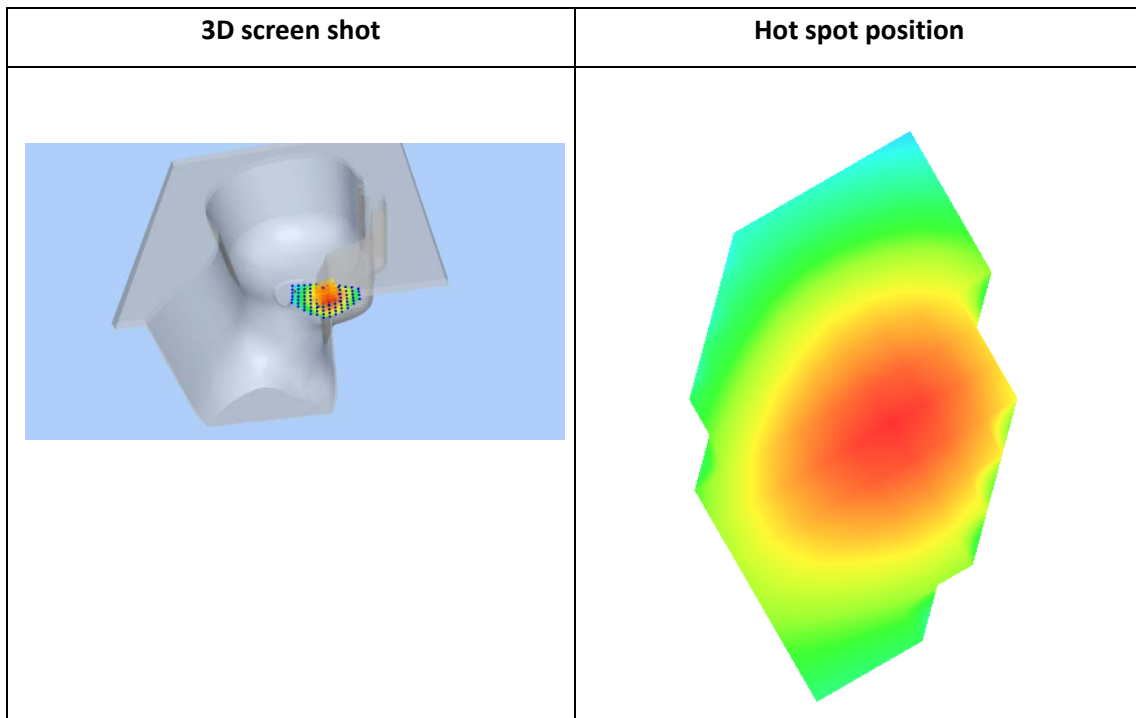
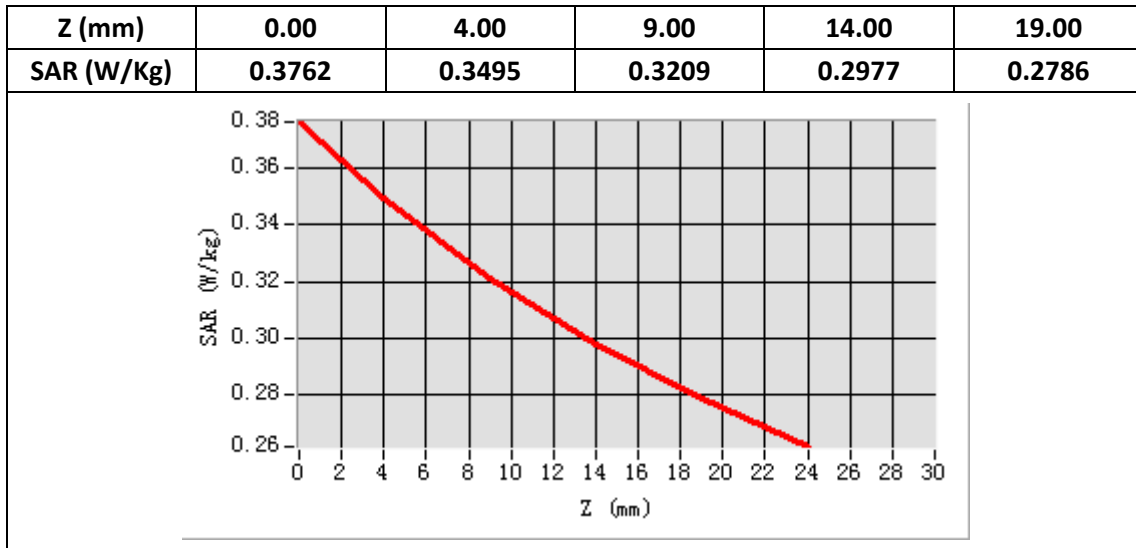
E-Field Probe	SATIMO SN_43/15_EP276
Frequency (MHz)	707.5
Relative permittivity (real part)	42.05
Relative permittivity (imaginary part)	21.60
Conductivity (S/m)	0.90
Variation (%)	-0.46
ConvF:	4.80



Maximum location: X=-51.00, Y=-27.00

SAR Peak: 0.38 W/kg

SAR 10g (W/Kg)	0.257764
SAR 1g (W/Kg)	0.292121



**Plot 14: LTE Band12, 10MHz, Back, Middle,10mm**

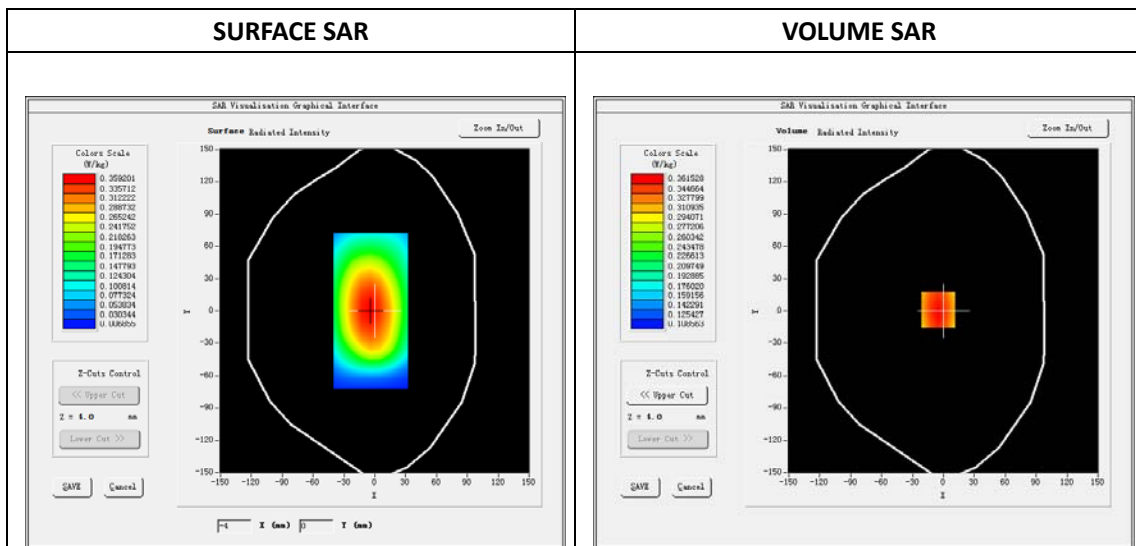
Type: Phone measurement  
 Date of measurement: 05/19/2018  
 Measurement duration: 22 minutes 15 seconds  
 Mobile Phone IMEI number: --

**A. Experimental conditions.**

<b>Area Scan</b>	dx=8mm dy=8mm
<b>ZoomScan</b>	5x5x7,dx=8mm dy=8mm dz=5mm
<b>Phantom</b>	Validation plane
<b>Device Position</b>	Back
<b>Band</b>	LTE Band 12
<b>Channels</b>	23095
<b>Signal</b>	LTE (Duty cycle: 1:1)

**B. SAR Measurement Results**

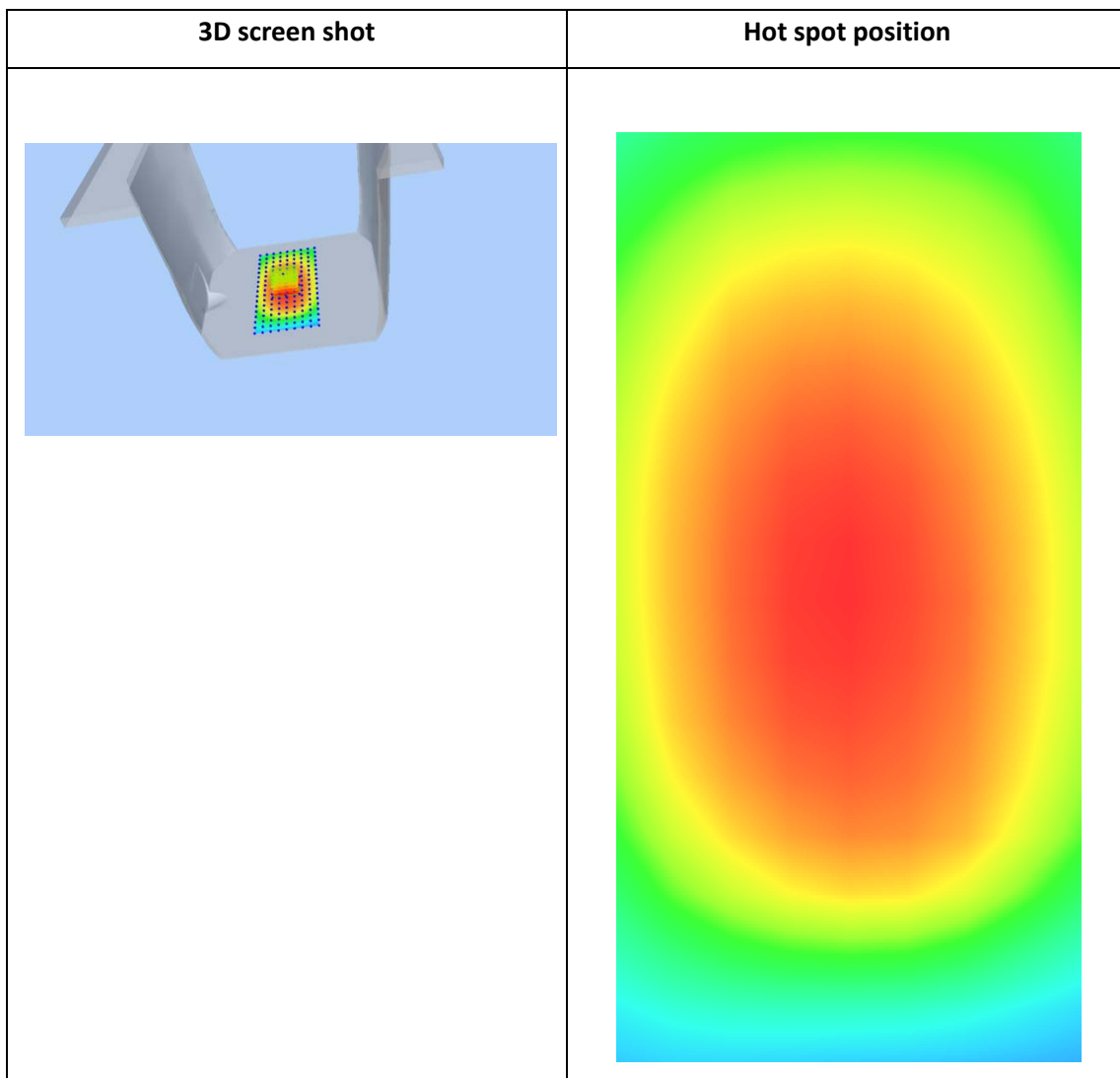
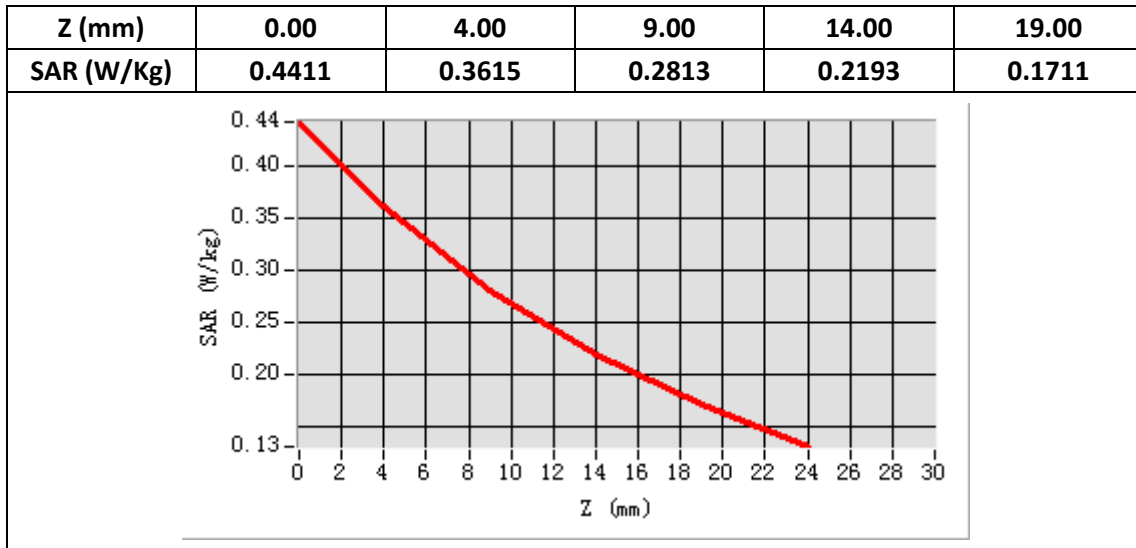
<b>E-Field Probe</b>	SATIMO SN_43/15_EP276
<b>Frequency (MHz)</b>	707.5
<b>Relative permittivity (real part)</b>	55.69
<b>Relative permittivity (imaginary part)</b>	22.80
<b>Conductivity (S/m)</b>	0.95
<b>Variation (%)</b>	0.17
<b>ConvF:</b>	4.94



**Maximum location: X=-5.00, Y=1.00**

**SAR Peak: 0.44 W/kg**

<b>SAR 10g (W/Kg)</b>	0.267252
<b>SAR 1g (W/Kg)</b>	0.357487



## Plot 15: LTE Band13, 10MHz, Right Cheek, Middle

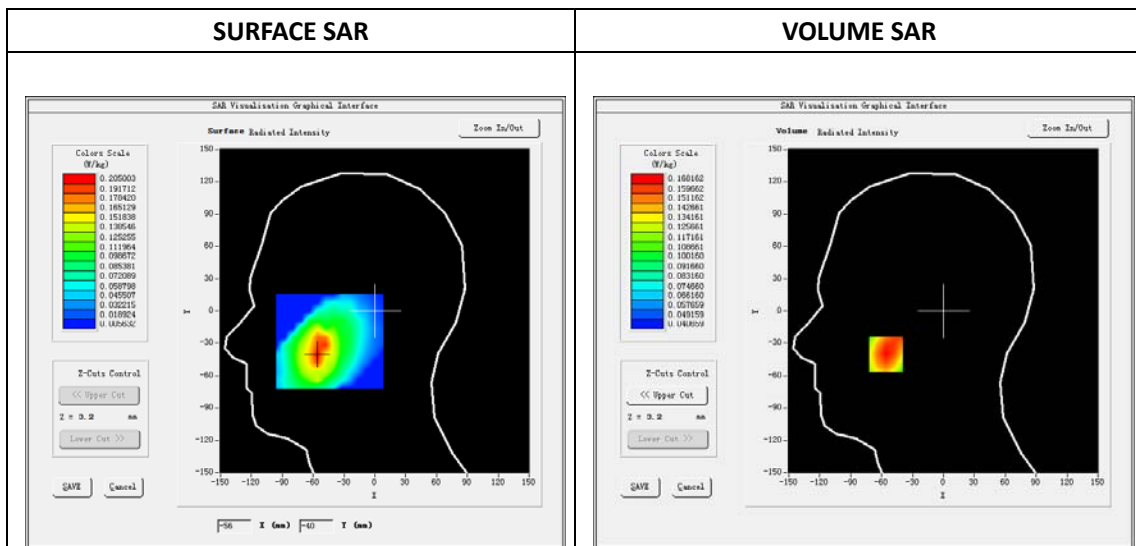
Type: Phone measurement  
 Date of measurement: 05/19/2018  
 Measurement duration: 22 minutes 31 seconds  
 Mobile Phone IMEI number: --

**A. Experimental conditions.**

Area Scan	dx=8mm dy=8mm
ZoomScan	5x5x7,dx=8mm dy=8mm dz=5mm
Phantom	Validation plane
Device Position	Right Cheek
Band	LTE Band 13
Channels	23230
Signal	LTE (Duty cycle: 1:1)

**B. SAR Measurement Results**

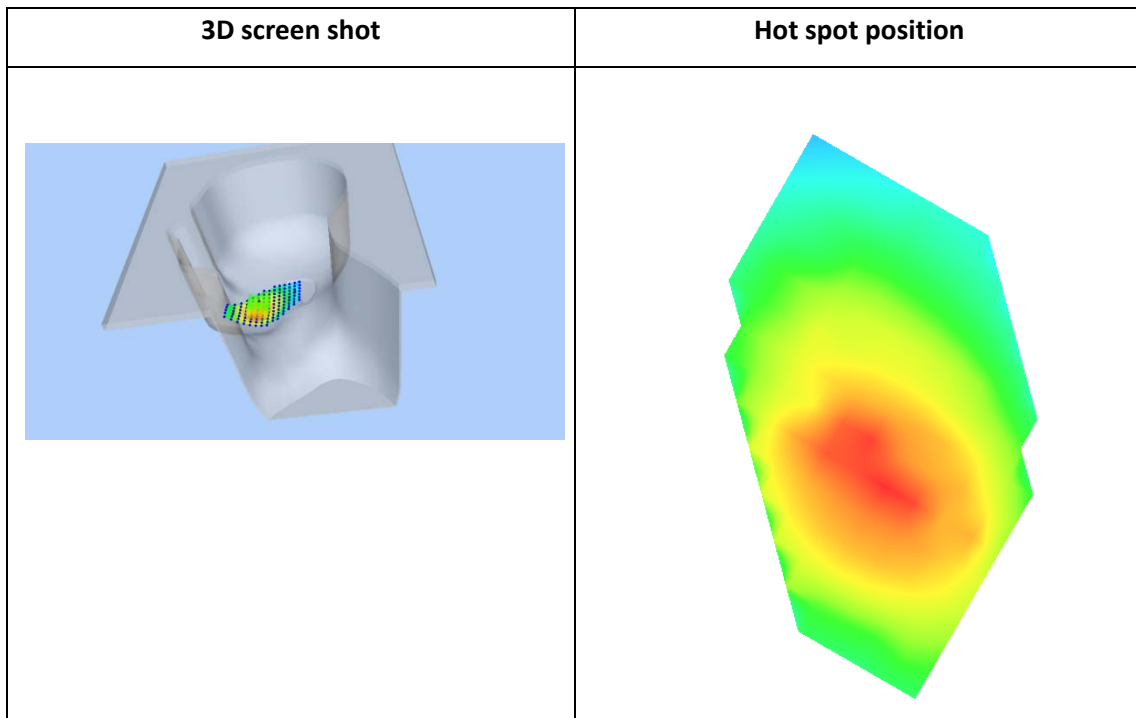
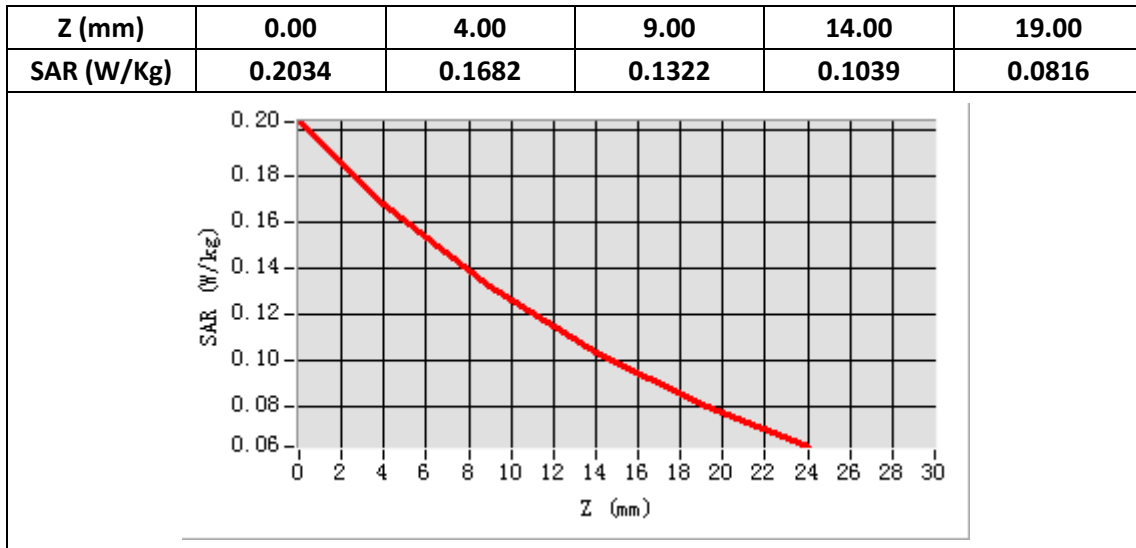
E-Field Probe	SATIMO SN_43/15_EP276
Frequency (MHz)	782
Relative permittivity (real part)	412.05
Relative permittivity (imaginary part)	21.60
Conductivity (S/m)	0.90
Variation (%)	-2.77
ConvF:	4.80



Maximum location: X=-56.00, Y=-40.00

SAR Peak: 0.20 W/kg

SAR 10g (W/Kg)	0.120230
SAR 1g (W/Kg)	0.162050



**Plot 16: LTE Band13, 10MHz, Back, Middle ,10mm**

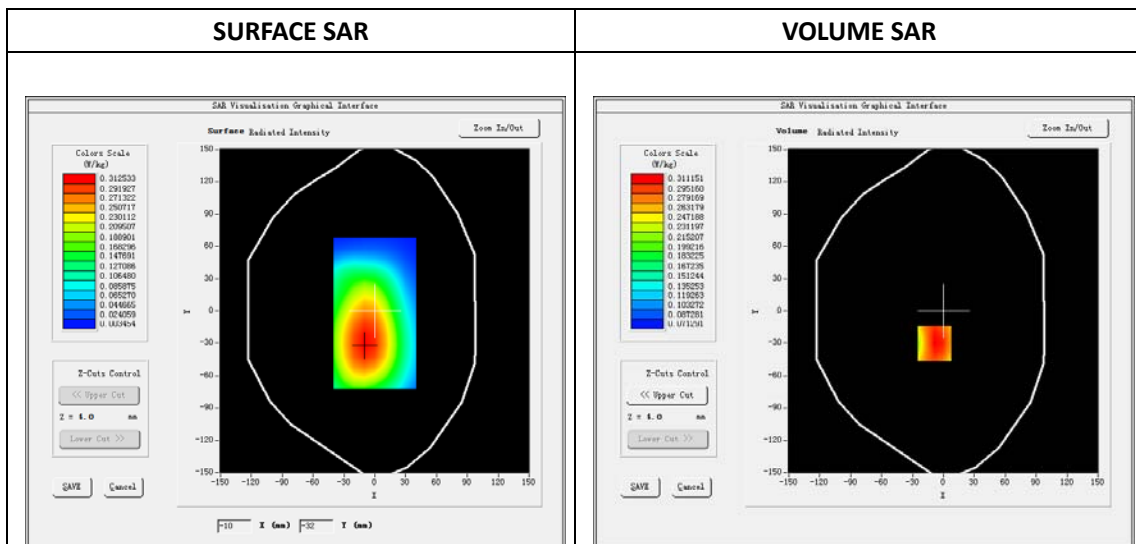
Type: Phone measurement  
 Date of measurement: 05/19/2018  
 Measurement duration: 22 minutes 47 seconds  
 Mobile Phone IMEI number: --

**A. Experimental conditions.**

Area Scan	dx=8mm dy=8mm
ZoomScan	5x5x7,dx=8mm dy=8mm dz=5mm
Phantom	Validation plane
Device Position	Back
Band	LTE Band 13
Channels	23230
Signal	LTE (Duty cycle: 1:1)

**B. SAR Measurement Results**

E-Field Probe	SATIMO SN_43/15_EP276
Frequency (MHz)	782
Relative permittivity (real part)	55.69
Relative permittivity (imaginary part)	22.80
Conductivity (S/m)	0.95
Variation (%)	0.89
ConvF:	4.94



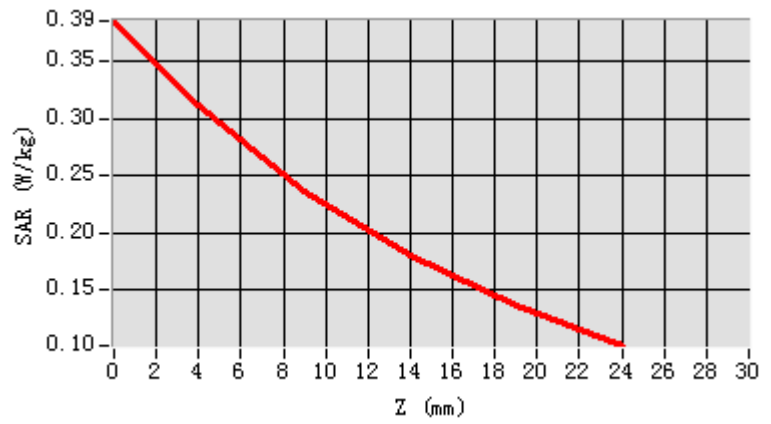
Maximum location: X=-9.00, Y=-30.00

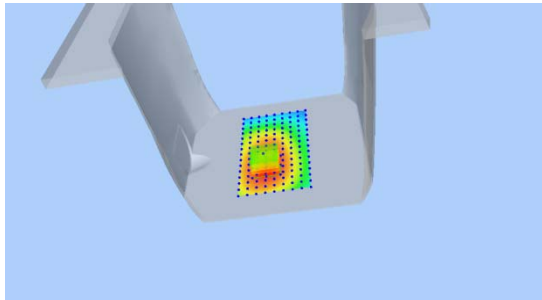

SAR Peak: 0.39 W/kg

SAR 10g (W/Kg)	0.218727
SAR 1g (W/Kg)	0.301197



Z (mm)	0.00	4.00	9.00	14.00	19.00
SAR (W/Kg)	0.3853	0.3112	0.2370	0.1801	0.1364



3D screen shot	Hot spot position
	

## Plot 17: LTE Band25, 20MHz, Right Cheek, Middle

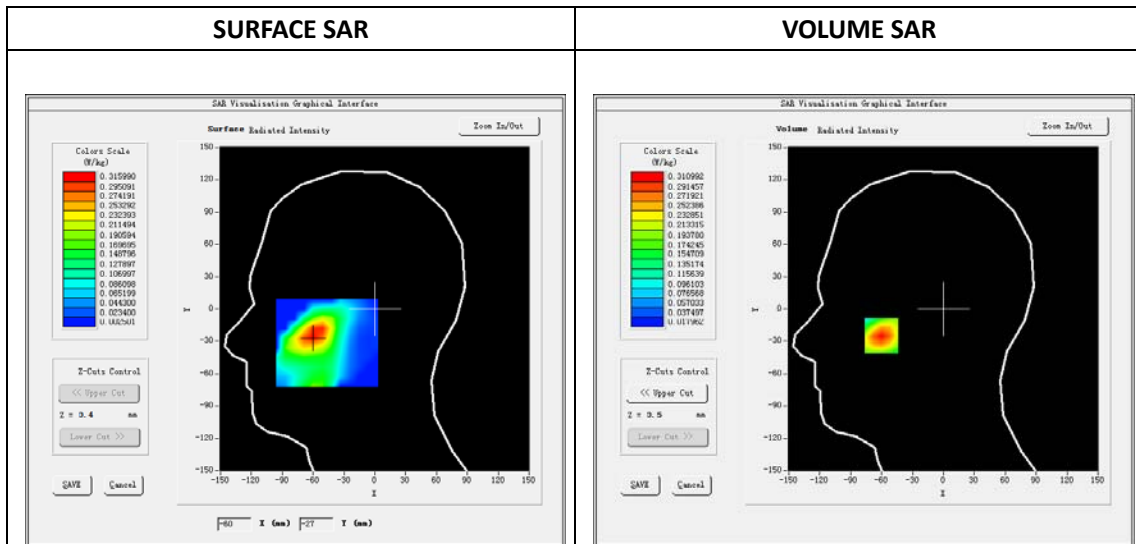
Type: Phone measurement  
 Date of measurement: 05/17/2018  
 Measurement duration: 22 minutes 16 seconds  
 Mobile Phone IMEI number: --

**A. Experimental conditions.**

Area Scan	dx=8mm dy=8mm
ZoomScan	5x5x7,dx=8mm dy=8mm dz=5mm
Phantom	Validation plane
Device Position	Right Cheek
Band	LTE Band 25
Channels	26365
Signal	LTE (Duty cycle: 1:1)

**B. SAR Measurement Results**

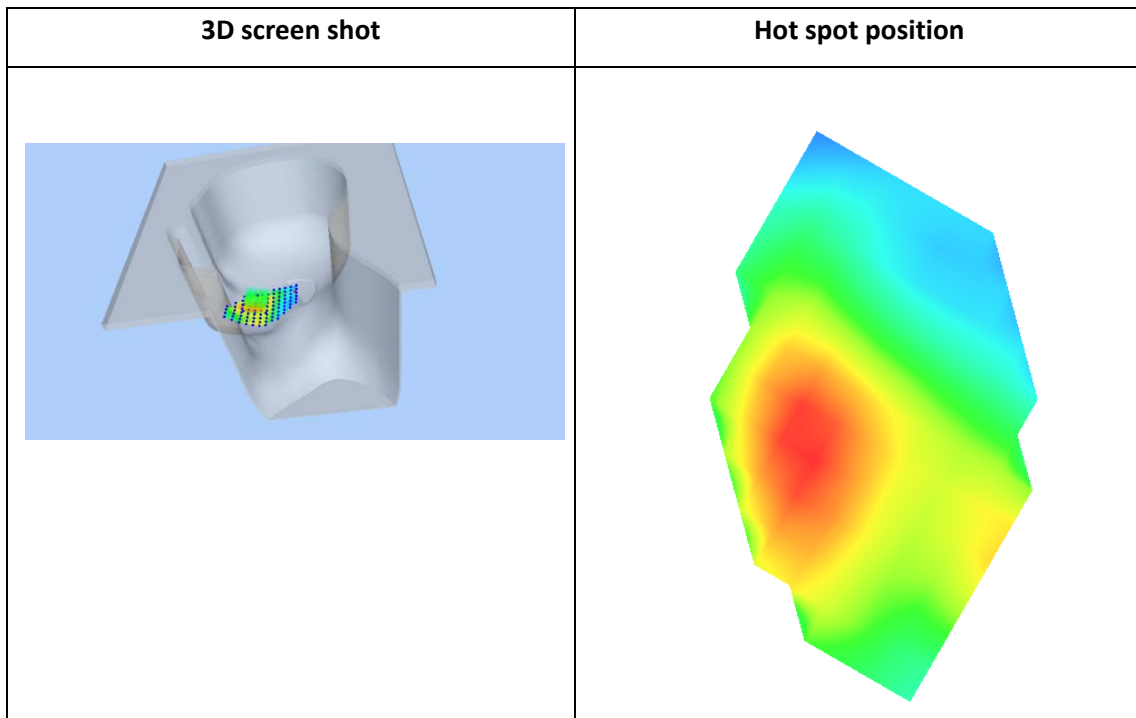
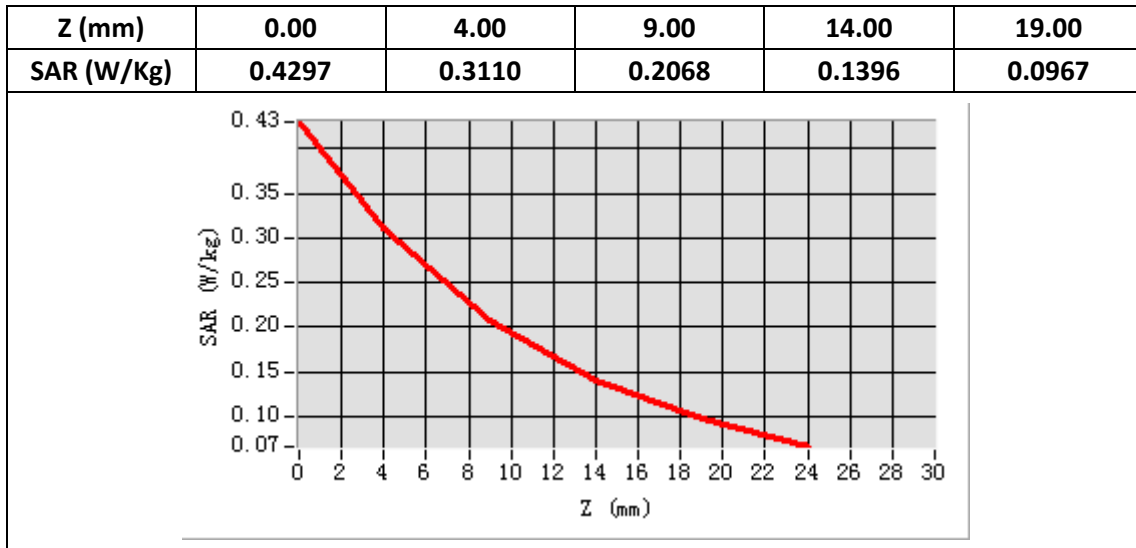
E-Field Probe	SATIMO SN_43/15_EP276
Frequency (MHz)	1882.5
Relative permittivity (real part)	41.20
Relative permittivity (imaginary part)	12.78
Conductivity (S/m)	1.35
Variation (%)	-2.80
ConvF:	4.73



Maximum location: X=-60.00, Y=-25.00

SAR Peak: 0.43 W/kg

SAR 10g (W/Kg)	0.181391
SAR 1g (W/Kg)	0.295751



**Plot 18: LTE Band25, 20MHz, Edge C, Middle,10mm**

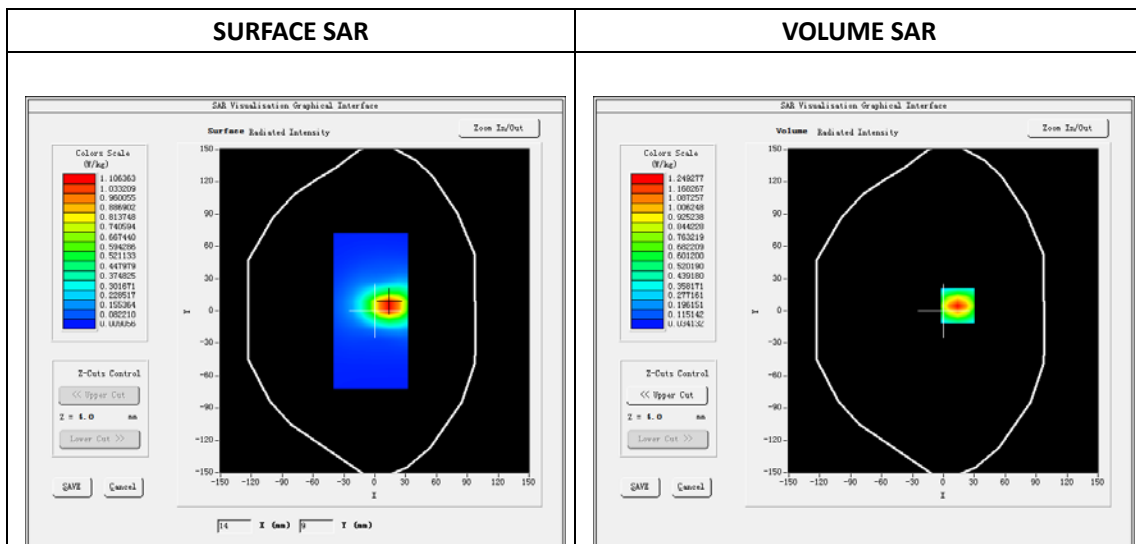
Type: Phone measurement  
 Date of measurement: 05/17/2018  
 Measurement duration: 22 minutes 42 seconds  
 Mobile Phone IMEI number: --

**A. Experimental conditions.**

<b>Area Scan</b>	dx=8mm dy=8mm
<b>ZoomScan</b>	5x5x7,dx=8mm dy=8mm dz=5mm
<b>Phantom</b>	Validation plane
<b>Device Position</b>	Edge C
<b>Band</b>	LTE Band 25
<b>Channels</b>	26365
<b>Signal</b>	LTE (Duty cycle: 1:1)

**B. SAR Measurement Results**

<b>E-Field Probe</b>	SATIMO SN_43/15_EP276
<b>Frequency (MHz)</b>	1882.5
<b>Relative permittivity (real part)</b>	53.96
<b>Relative permittivity (imaginary part)</b>	14.21
<b>Conductivity (S/m)</b>	1.50
<b>Variation (%)</b>	0.27
<b>ConvF:</b>	4.83

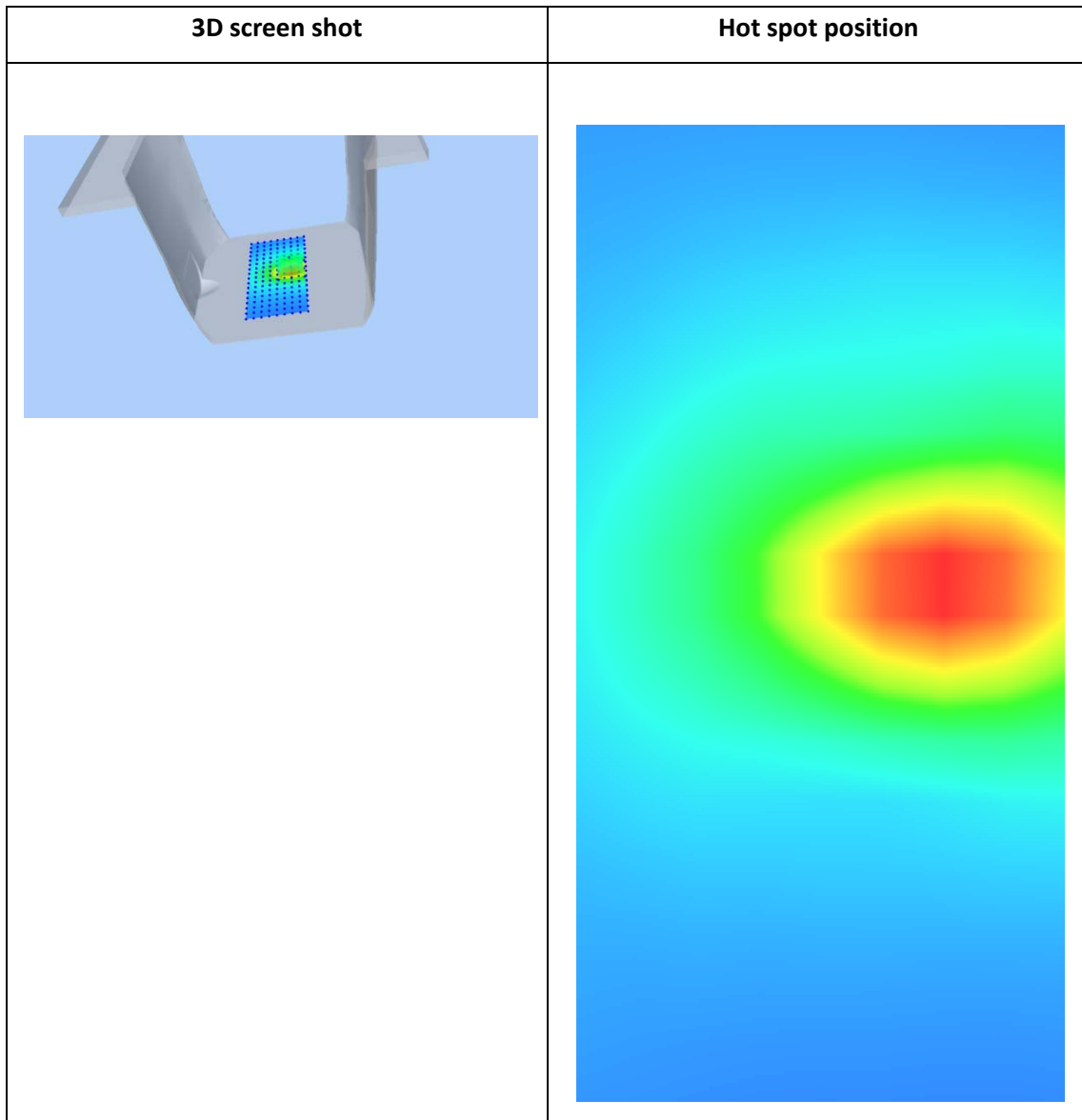
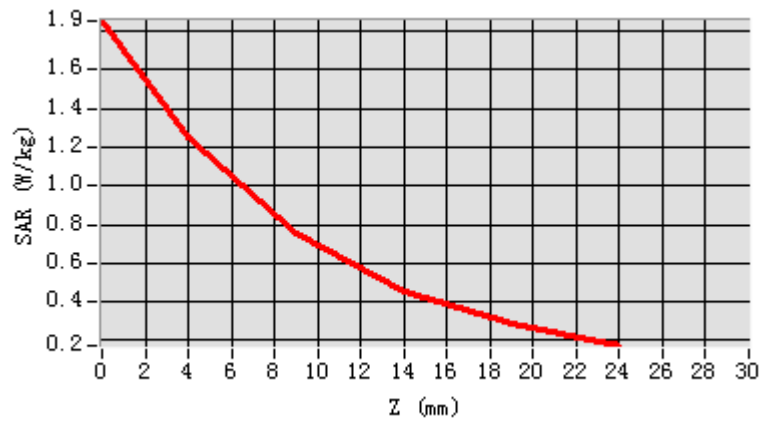


**Maximum location: X=14.00, Y=5.00**

**SAR Peak: 1.85 W/kg**

<b>SAR 10g (W/Kg)</b>	0.616337
<b>SAR 1g (W/Kg)</b>	1.184466

Z (mm)	0.00	4.00	9.00	14.00	19.00
SAR (W/Kg)	1.8515	1.2493	0.7518	0.4556	0.2843



### Plot 19: LTE Band26, 15MHz, Left Cheek, Middle

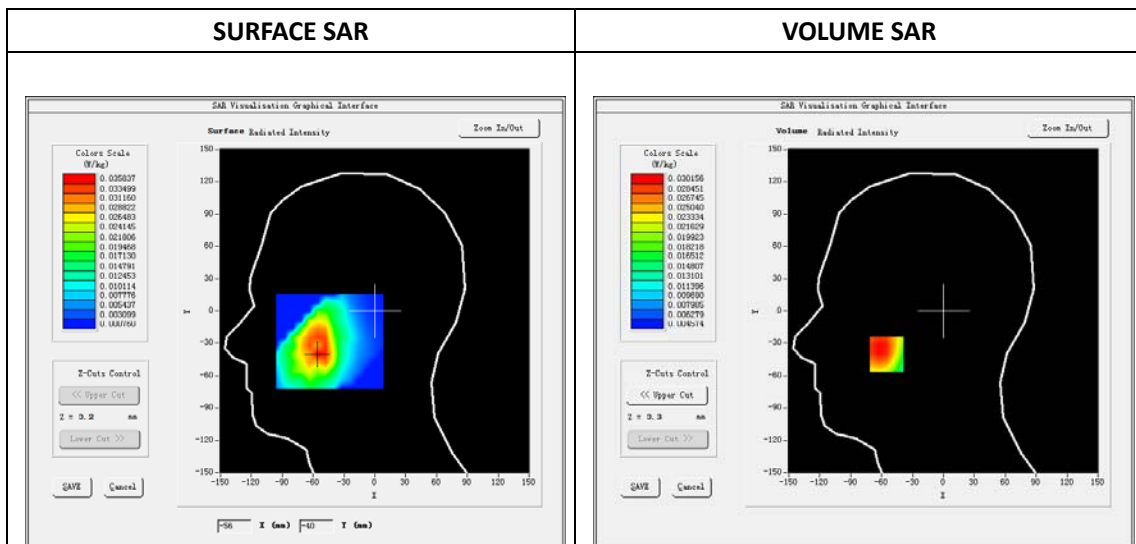
Type: Phone measurement  
 Date of measurement: 05/19/2018  
 Measurement duration: 22 minutes 13 seconds  
 Mobile Phone IMEI number: --

**A. Experimental conditions.**

Area Scan	dx=8mm dy=8mm
ZoomScan	5x5x7,dx=8mm dy=8mm dz=5mm
Phantom	Validation plane
Device Position	Left Cheek
Band	LTE Band 26
Channels	26865
Signal	LTE (Duty cycle: 1:1)

**B. SAR Measurement Results**

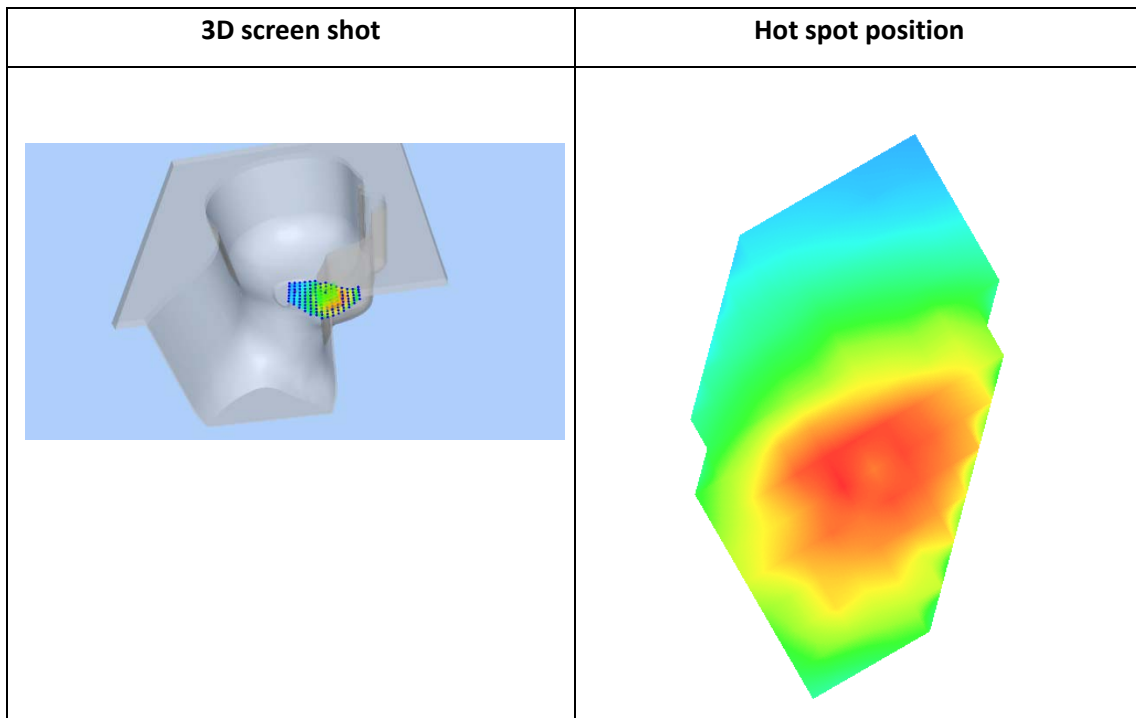
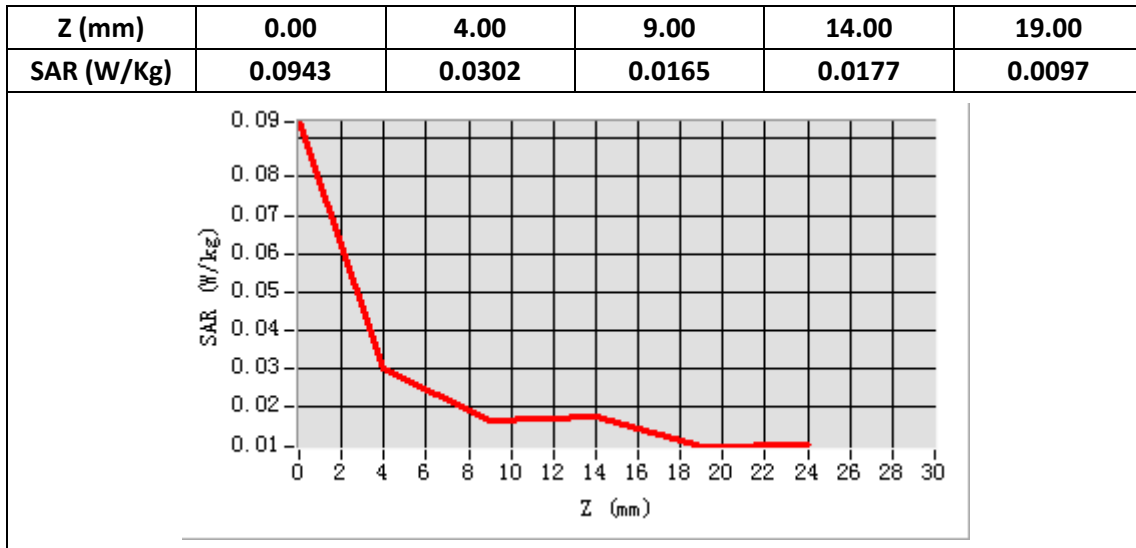
E-Field Probe	SATIMO SN_43/15_EP276
Frequency (MHz)	831.5
Relative permittivity (real part)	42.05
Relative permittivity (imaginary part)	21.60
Conductivity (S/m)	0.90
Variation (%)	-2.26
ConvF:	4.80



Maximum location: X=-55.00, Y=-40.00

SAR Peak: 0.04 W/kg

SAR 10g (W/Kg)	0.021418
SAR 1g (W/Kg)	0.029294



## Plot 20: LTE Band26, 15MHz, Back, Middle,10mm

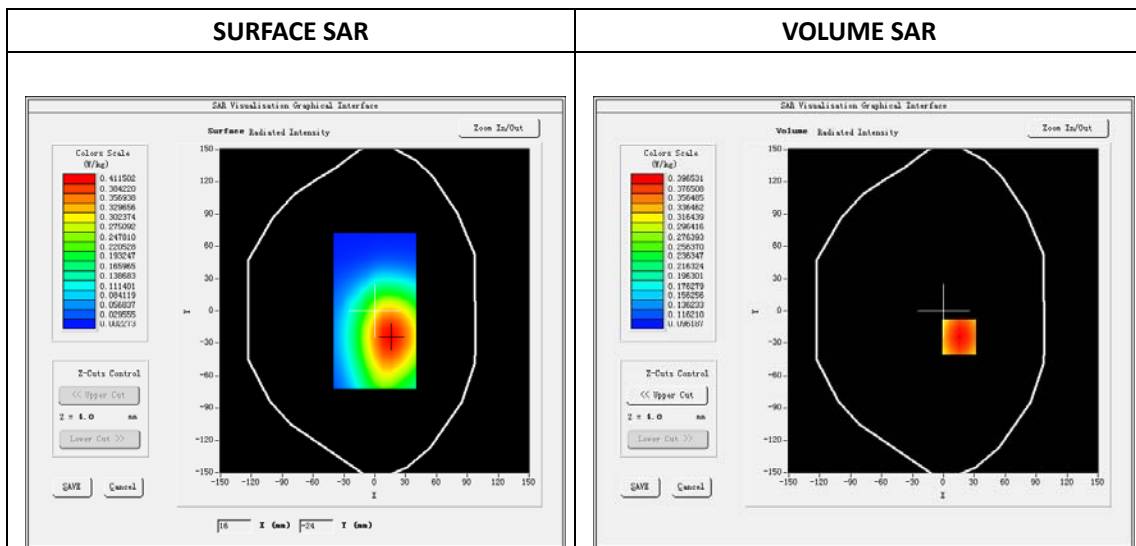
Type: Phone measurement  
 Date of measurement: 05/19/2018  
 Measurement duration: 22 minutes 51 seconds  
 Mobile Phone IMEI number: --

**A. Experimental conditions.**

<b>Area Scan</b>	dx=8mm dy=8mm
<b>ZoomScan</b>	5x5x7,dx=8mm dy=8mm dz=5mm
<b>Phantom</b>	Validation plane
<b>Device Position</b>	Back
<b>Band</b>	LTE Band 26
<b>Channels</b>	26865
<b>Signal</b>	LTE (Duty cycle: 1:1)

**B. SAR Measurement Results**

<b>E-Field Probe</b>	SATIMO SN_43/15_EP276
<b>Frequency (MHz)</b>	831.5
<b>Relative permittivity (real part)</b>	55.69
<b>Relative permittivity (imaginary part)</b>	22.80
<b>Conductivity (S/m)</b>	0.95
<b>Variation (%)</b>	1.20
<b>ConvF:</b>	4.94



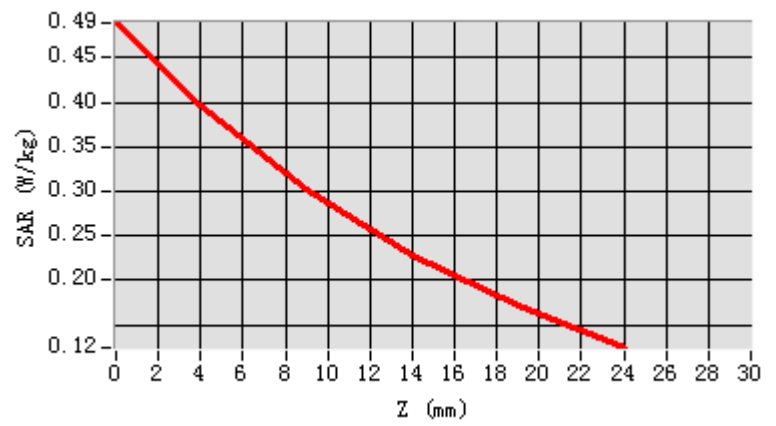
**Maximum location: X=15.00, Y=-24.00**

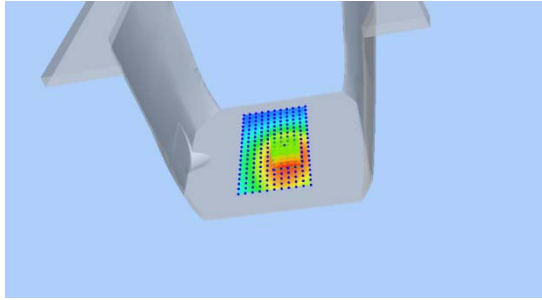
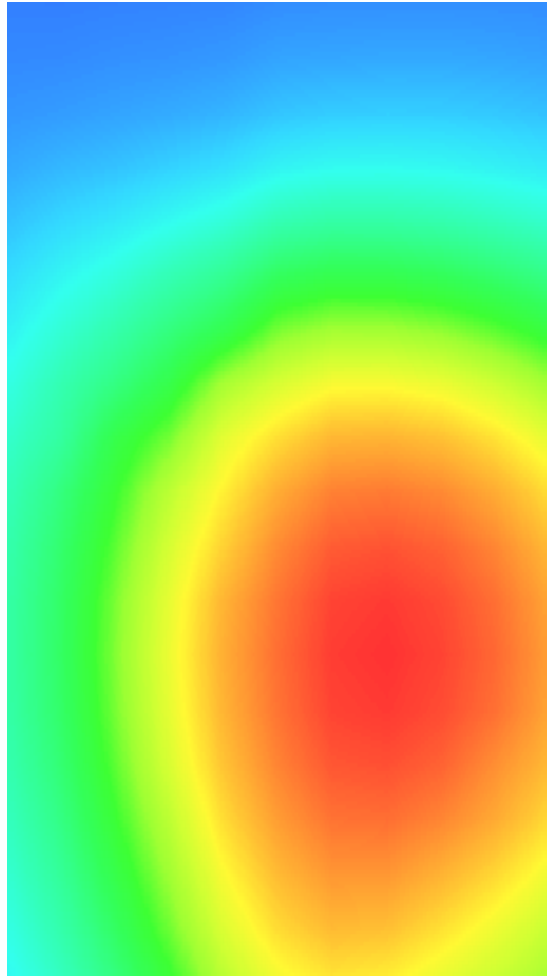
**SAR Peak: 0.49 W/kg**

<b>SAR 10g (W/Kg)</b>	0.278886
<b>SAR 1g (W/Kg)</b>	0.382469



Z (mm)	0.00	4.00	9.00	14.00	19.00
SAR (W/Kg)	0.4894	0.3965	0.3022	0.2286	0.1710



3D screen shot	Hot spot position
	

### Plot 21: LTE Band41, 20MHz, Left Cheek, Middle

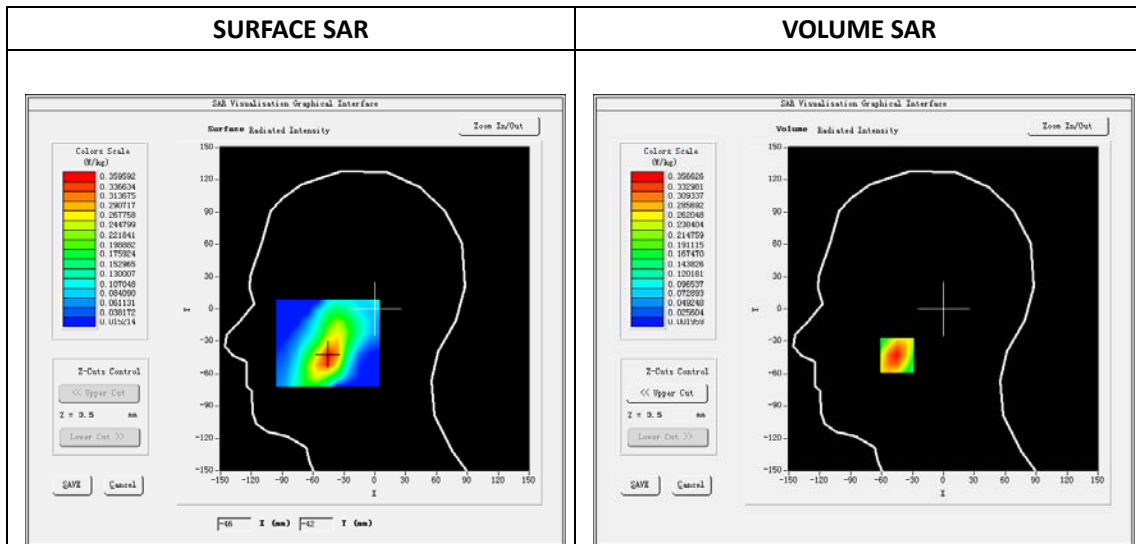
Type: Phone measurement  
 Date of measurement: 05/21/2018  
 Measurement duration: 22 minutes 03 seconds  
 Mobile Phone IMEI number: --

**A. Experimental conditions.**

Area Scan	dx=8mm dy=8mm
ZoomScan	5x5x7,dx=8mm dy=8mm dz=5mm
Phantom	Validation plane
Device Position	Left Cheek
Band	LTE Band 41
Channels	40620
Signal	LTE (Duty cycle: 1:1)

**B. SAR Measurement Results**

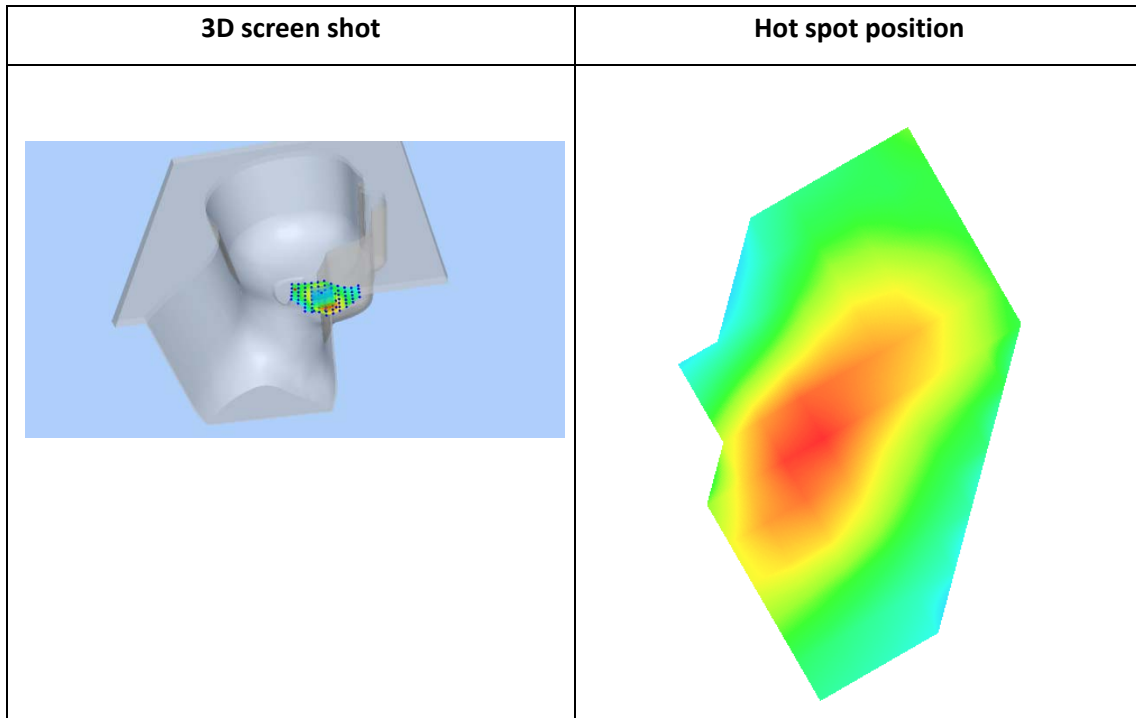
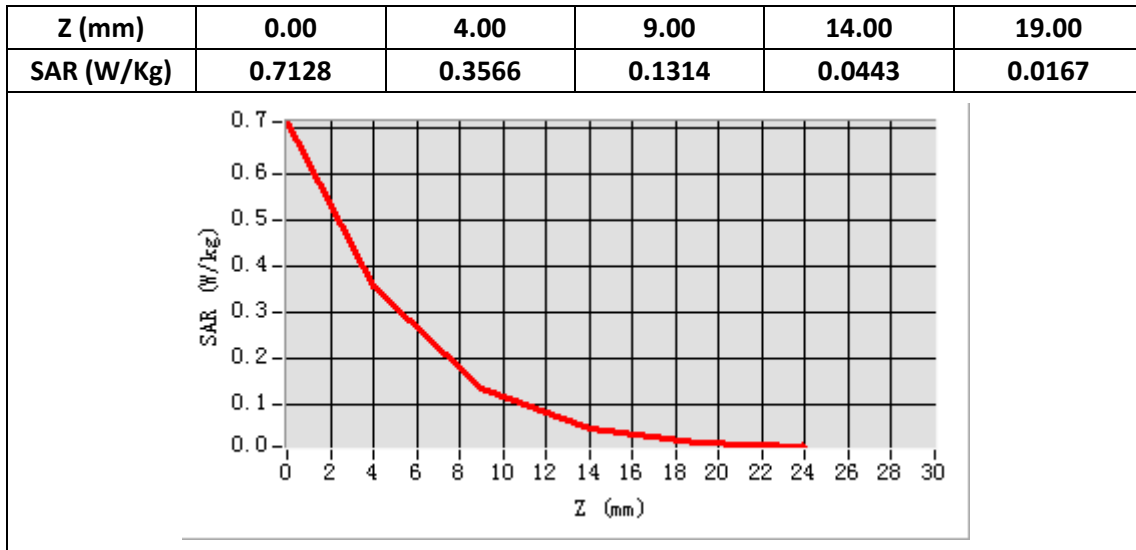
E-Field Probe	SATIMO SN_43/15_EP276
Frequency (MHz)	2593
Relative permittivity (real part)	38.12
Relative permittivity (imaginary part)	13.43
Conductivity (S/m)	1.94
Variation (%)	-0.30
ConvF:	4.16



Maximum location: X=-45.00, Y=-43.00

SAR Peak: 0.71 W/kg

SAR 10g (W/Kg)	0.159749
SAR 1g (W/Kg)	0.342777



**Plot 22: LTE Band41, 20MHz, Back, Middle,10mm**

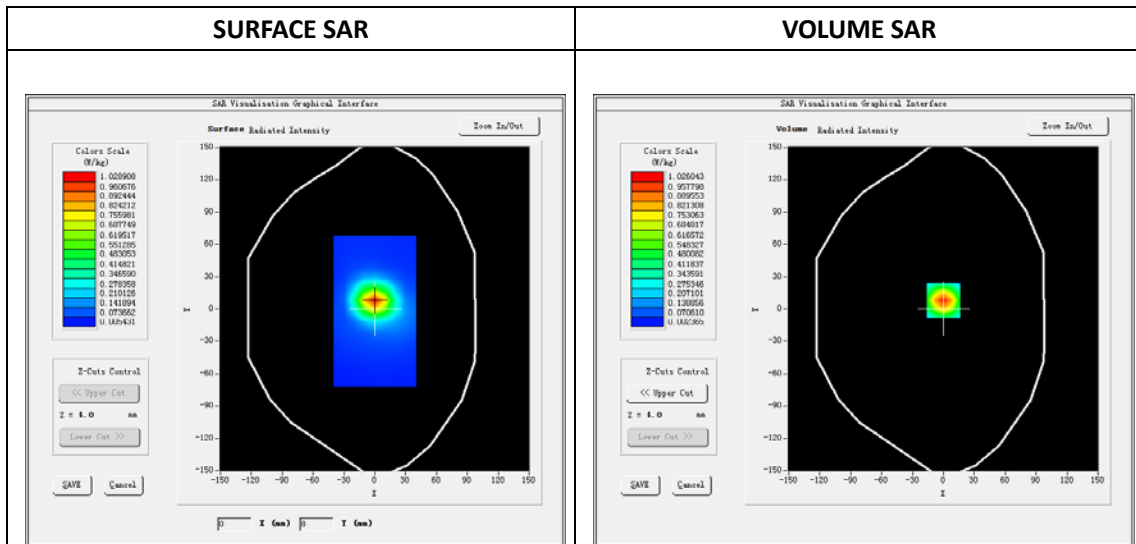
Type: Phone measurement  
 Date of measurement: 05/17/2018  
 Measurement duration: 22 minutes 42 seconds  
 Mobile Phone IMEI number: --

**A. Experimental conditions.**

<b>Area Scan</b>	dx=8mm dy=8mm
<b>ZoomScan</b>	5x5x7,dx=8mm dy=8mm dz=5mm
<b>Phantom</b>	Validation plane
<b>Device Position</b>	Back
<b>Band</b>	LTE Band 25
<b>Channels</b>	26365
<b>Signal</b>	LTE (Duty cycle: 1:1)

**B. SAR Measurement Results**

<b>E-Field Probe</b>	SATIMO SN_43/15_EP276
<b>Frequency (MHz)</b>	1882.5
<b>Relative permittivity (real part)</b>	55.41
<b>Relative permittivity (imaginary part)</b>	14.26
<b>Conductivity (S/m)</b>	2.06
<b>Variation (%)</b>	-1.18
<b>ConvF:</b>	4.83

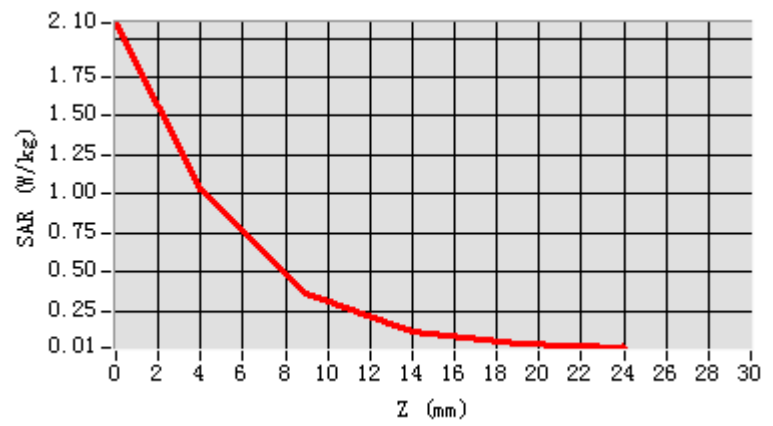


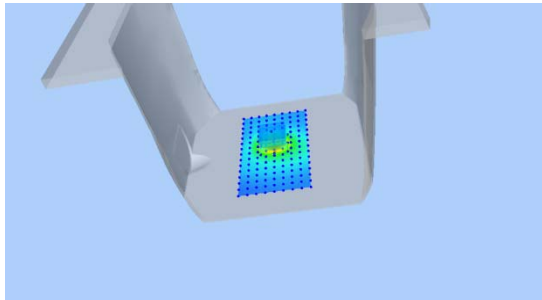
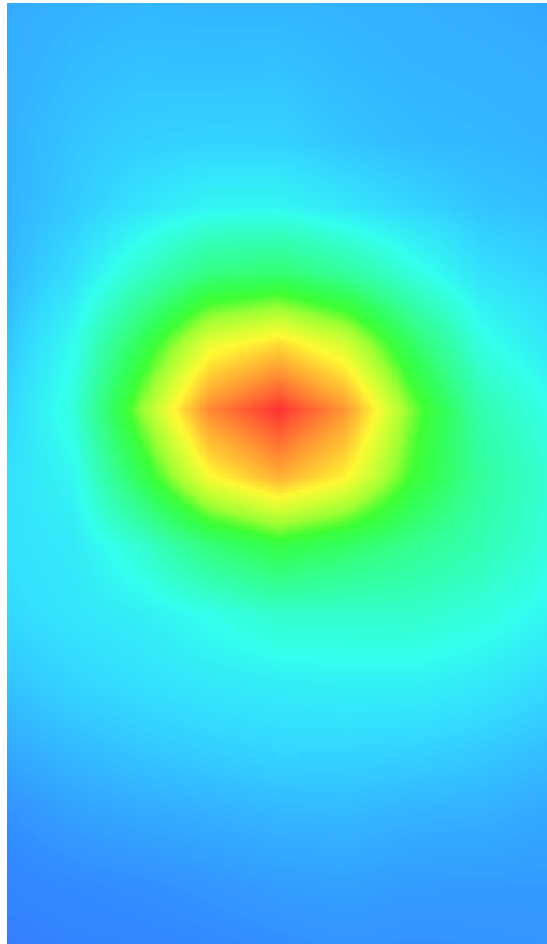
**Maximum location: X=0.00, Y=8.00**

**SAR Peak: 2.09 W/kg**

<b>SAR 10g (W/Kg)</b>	0.402525
<b>SAR 1g (W/Kg)</b>	0.959100

Z (mm)	0.00	4.00	9.00	14.00	19.00
SAR (W/Kg)	2.0972	1.0260	0.3603	0.1115	0.0373



3D screen shot	Hot spot position
	

**Plot 23: WIFI 802.11b Left Cheek, Middle**

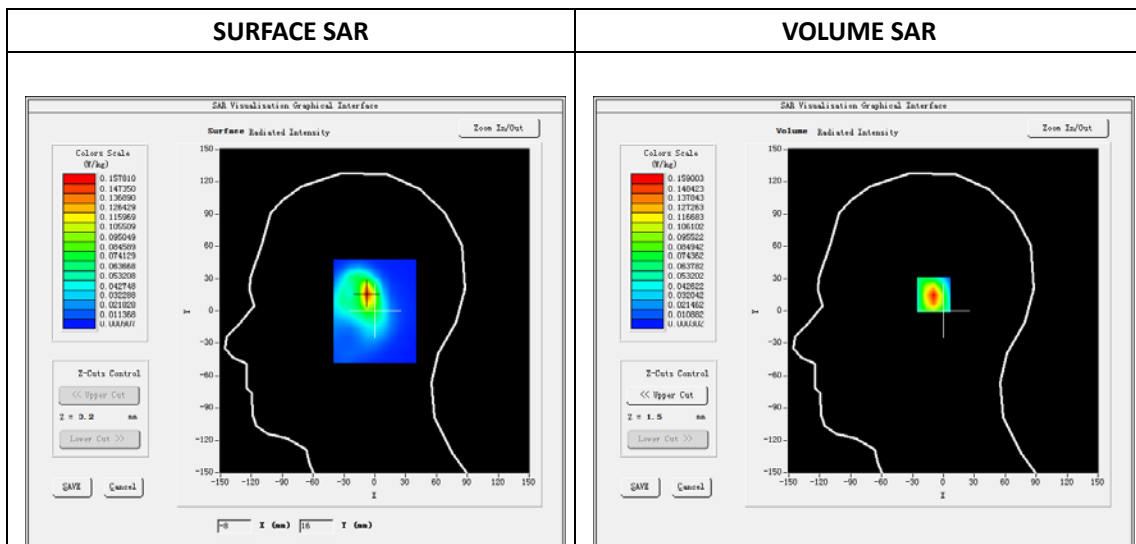
Type: Phone measurement  
 Date of measurement: 05/15/2018  
 Measurement duration: 22 minutes 27 seconds  
 Mobile Phone IMEI number: --

**A. Experimental conditions.**

<b>Area Scan</b>	dx=8mm dy=8mm
<b>ZoomScan</b>	5x5x7,dx=8mm dy=8mm dz=5mm
<b>Phantom</b>	Validation plane
<b>Device Position</b>	Left Cheek
<b>Band</b>	WIFI 802.11b
<b>Channels</b>	11
<b>Signal</b>	OFDM (Duty cycle: 1:1)

**B. SAR Measurement Results**

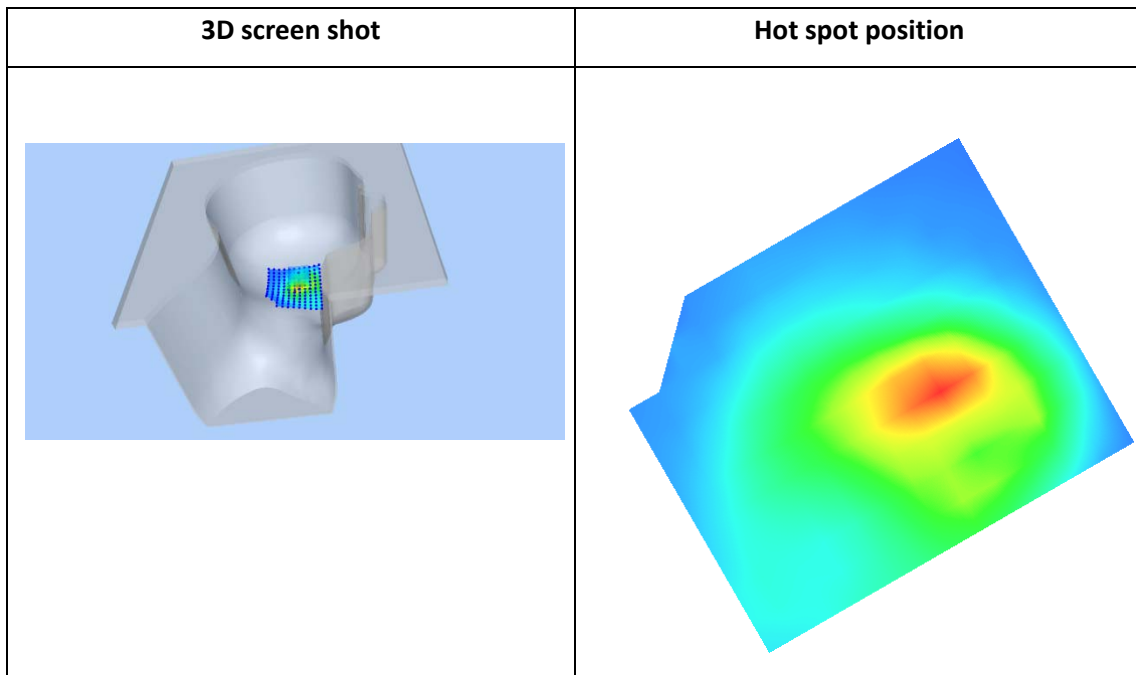
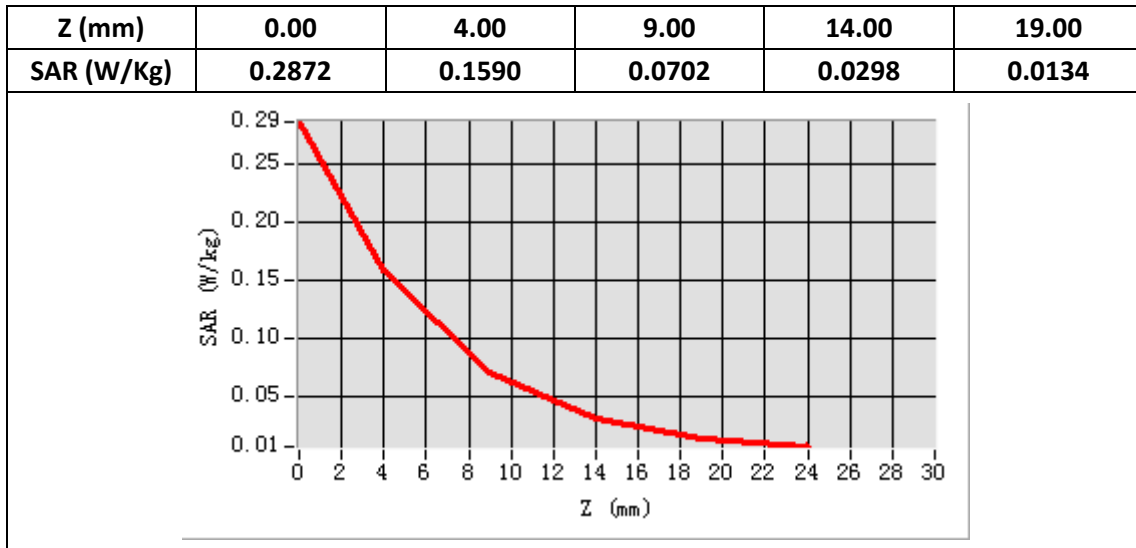
<b>E-Field Probe</b>	SATIMO SN_43/15_EP276
<b>Frequency (MHz)</b>	2462
<b>Relative permittivity (real part)</b>	38.75
<b>Relative permittivity (imaginary part)</b>	12.95
<b>Conductivity (S/m)</b>	1.76
<b>Variation (%)</b>	0.27
<b>ConvF:</b>	4.66



**Maximum location: X=-7.00, Y=16.00**

**SAR Peak: 0.29 W/kg**

<b>SAR 10g (W/Kg)</b>	0.066343
<b>SAR 1g (W/Kg)</b>	0.158573



**Plot 24:WIFI 802.11b , Face, Middle,10mm**

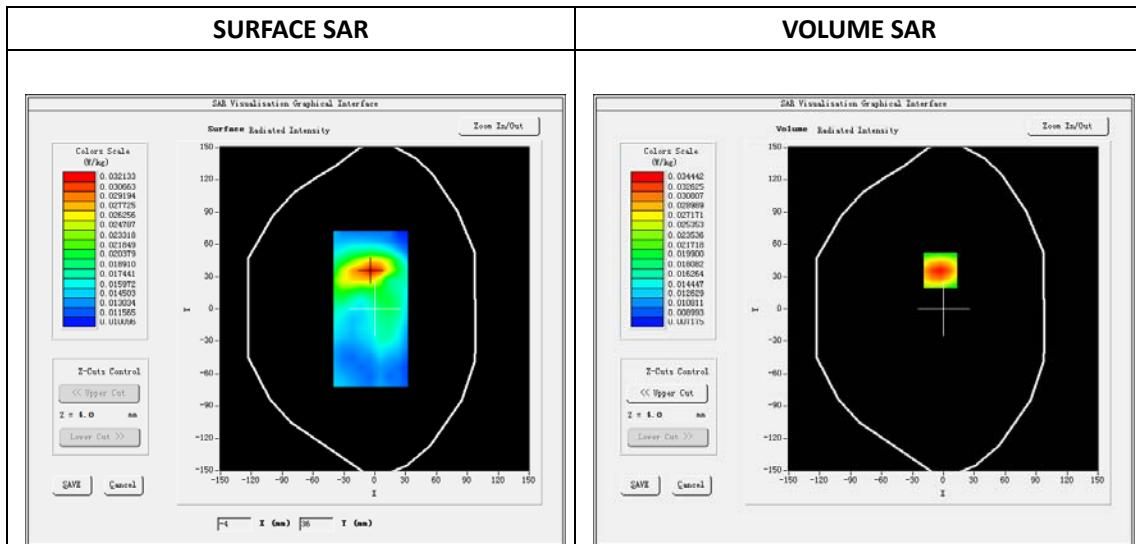
Type: Phone measurement  
 Date of measurement: 05/15/2018  
 Measurement duration: 22 minutes 29 seconds  
 Mobile Phone IMEI number: --

**A. Experimental conditions.**

Area Scan	dx=8mm dy=8mm
ZoomScan	5x5x7,dx=8mm dy=8mm dz=5mm
Phantom	Validation plane
Device Position	Face
Band	WIFI 802.11b
Channels	11
Signal	OFDM (Duty cycle: 1:1)

**B. SAR Measurement Results**

E-Field Probe	SATIMO SN_43/15_EP276
Frequency (MHz)	2462
Relative permittivity (real part)	52.36
Relative permittivity (imaginary part)	15.04
Conductivity (S/m)	1.92
Variation (%)	0.80
ConvF:	4.61



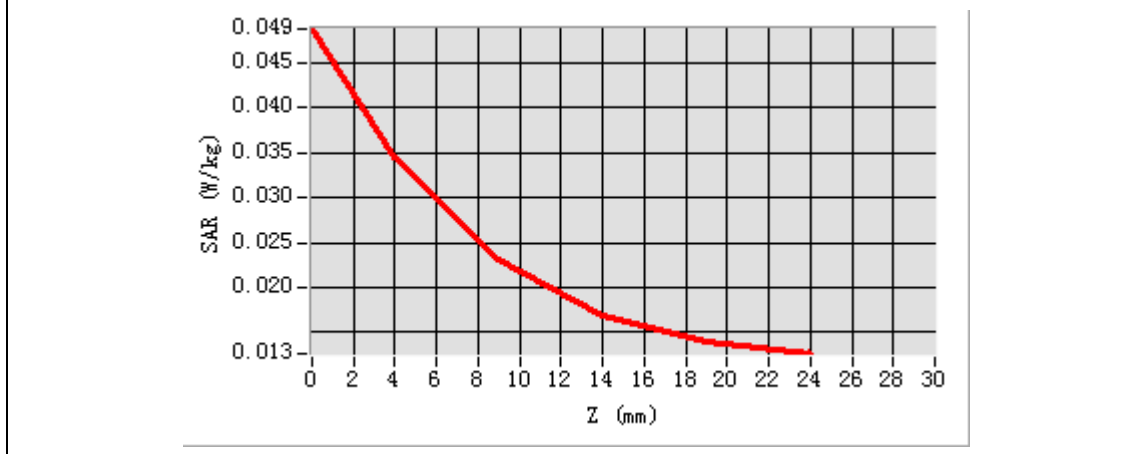
Maximum location: X=-3.00, Y=36.00

SAR Peak: 0.05 W/kg

SAR 10g (W/Kg)	0.023233
SAR 1g (W/Kg)	0.035204



Z (mm)	0.00	4.00	9.00	14.00	19.00
SAR (W/Kg)	0.0488	0.0344	0.0230	0.0169	0.0141



3D screen shot	Hot spot position
