



System Remote Control SR-150B Setup Guide

Use and Features

The Control4 System Remote Control SR-150 (Model C4-SR150B-Z-B) is intended for use in a Control4® system with OS 2.0 and later. It is included with the purchase of select Control4 Controllers, but may also be purchased separately. This System Remote Control can be used to:

- Navigate system menus and access media databases on a television or monitor
- Control system devices

This System Remote Control goes beyond a typical “universal” remote that simply learns IR codes from TVs, VCRs, CD players, and DVD players. This device features:

- Bi-directional communication with system components
- ZigBee wireless mesh networking
- Full access to system components
- Back-lighting on keys and display for ease of use in dark rooms
- Ambient light sensor for efficient control of backlighting
- Quick-access buttons to select recently used audio and video devices
- Programmable buttons
- Paging functionality
- Standard control features for: Digital Satellite Systems (DSS), cable boxes, TV tuners, Digital Video Recorders (DVR), DVD changers/players, CD changers/players, MP3 players, VCRs, or TVs.
- Powered by four (4) AAA batteries (included)

Install and Maintain the Batteries

Install the Batteries

Install the four (4) AAA batteries (included) into the back of the SR-150. Insert them according to the diagram provided in the battery compartment (with the + and - terminals aligned correctly).

Battery Use and Care Tips

- Keep the battery contacts and compartment clean.
- Remove the batteries from the product if it is not going to be used for several months.
- Extreme temperatures reduce battery performance. Avoid putting the SR-150 in very warm places.

Battery Replacement and Safety Rules

CAUTION! To prevent a battery short, leakage or rupture:

- Use typical AAA Alkaline batteries only.
- Do not mix battery types, such as Alkaline and rechargeable NiMH batteries.
- Do not attempt to recharge a battery unless the battery is specifically marked “rechargeable.”
- Never dispose of batteries in a fire.

ATTENTION! Pour empêcher court-circuiter, fuite ou rupture de batterie: Utilisez les accumulateurs alcalins typiques d'AAA seulement.

- Ne mélangez pas les types de batterie, tels que les batteries alcalines et rechargeables de NiMH.
- N'essayez pas de recharger une batterie à moins que la batterie soit spécifiquement marqué « rechargeable ».
- Ne vous débarrassez jamais des batteries dans un feu.
- Ne vous débarrassez jamais des batteries dans un feu.

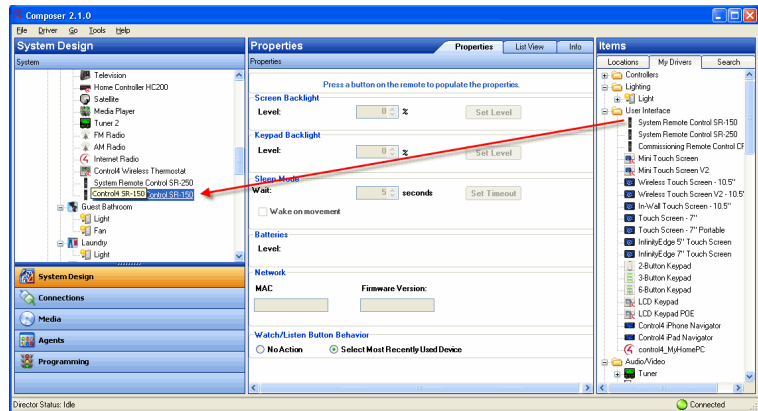


VORSICHT! Das Batteriekurzschluß, -durchsickern oder -abbruch verhindern:

- Benutzen Sie AAA alkalische Batterien nur im Schalter.
- Mischen Sie nicht Batteriearten, wie alkalische und nachladbare NiMH Batterien.
- Versuchen Sie nicht, eine Batterie neuzuladen, es sei denn die Batterie ist spezifisch gekennzeichnetes „nachladbares.“
- Entledigen Sie nie sich Batterien in einem Feuer.

Configure the Remote Control

- 1 Start Composer and connect to a Director.
- 2 In the System Design view, select the **room** where the System Remote Control will reside.
- 3 In the My Drivers tab, locate the **SR-150** under the User Interface section.



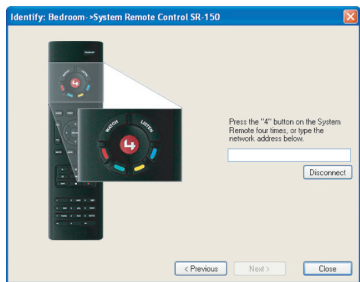
- 4 Double-click **System Remote Control SR-150** to add the device to the project tree.



NOTE: If the correct driver doesn't appear, right click on the driver/category in the My Drivers list, and then select **Restore Default List** to update the list.

- 5 Identify the SR-150:

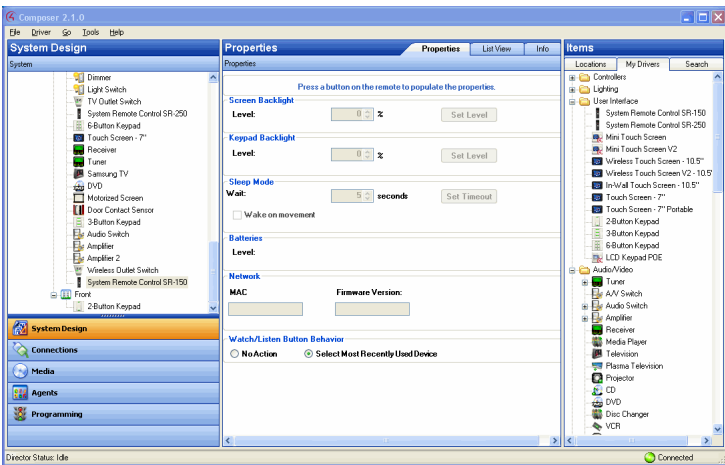
- In the Connections view, click the **Network** tab.
- Select **System Remote Control SR-150** in the center pane.
- Click **Identify** (or right-click and choose Identify).
- When prompted to do so, press the red **4** button four (4) times to have the device identify to the Control4 system.



NOTE: To complete the identification process, the System Remote Control for the Controller must be Zserver enabled.

- Once the MAC address appears in the window, click **Close**.

- 6 View or change the System Remote Control properties as needed in Composer. In the System Design view project tree, select the System Remote Control SR-150 object to display the device's properties.



The properties include:

- **Screen Backlight**— Not used.
- **Keypad Brightness**—Set the light level (brightness) of the keypad backlight. Choose a percentage from 0 (Off) to 100 (full brightness).
- **Sleep Mode**—Set how long the System Remote Control stays awake after no activity. The default setting is 15 seconds, but can be extended up to 60 seconds or can be reduced down to 0 to conserve battery life. Select wake on movement to wake the remote when picked up.
- **Batteries**—Displays the current strength of the batteries.
- **Network MAC**—Displays the System Remote Control's own MAC address.
- **Firmware Version**—Displays the current firmware version.
- **Watch/Listen Button Behavior**—Select to start the most recently used device.
- 7 Change System Remote Control settings as needed at the SR-150 remote by using the applicable button-press sequence:
 - **Change Backlight Level**—To increase or decrease the backlight level: Press **Room Off, 0, 0, 1**. After a single blink of Room Off, use the up or down arrow to set the level, then press Room Off to exit Edit mode and save the setting.
 - **Check ZigBee Channel**—To determine the current ZigBee channel: Press **Room Off, #,*,7,4,7** then count the blinks of Room Off. The number of blinks corresponds with the channel number.
 - **Reset to Factory Defaults**—To reset all settings to the factory defaults and leave the ZigBee network: Press **Room Off, #,*,1,3,4,1,3**.

Program the Programmable Buttons

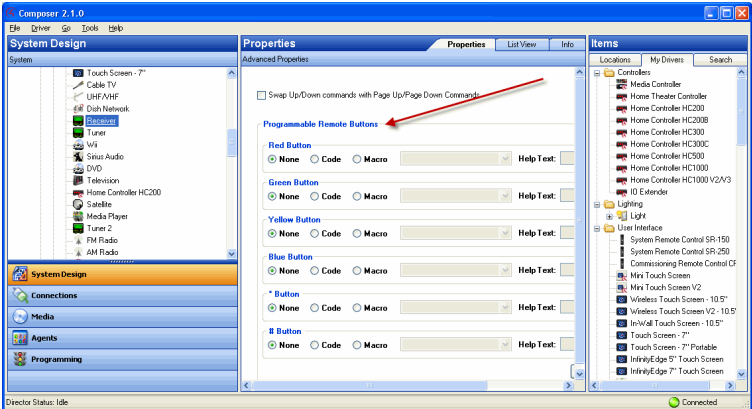
On the System Remote Control SR-150, you can program six (6) soft buttons (Red, Green, Yellow, Blue, *, and #) to perform programmed activities.

These buttons can be programmed to execute any of the AV device's macros or IR codes. Program these options using the AV device Properties page.

- 1 Start Composer and connect to a Director.
- 2 Ensure the **System Design** view is selected.
- 3 Ensure that you have the following devices in your project:

- Controller
- System Remote Control SR-150
- An AV device to be controlled

- 4 Select the **Connections** view.
- 5 On the Network tab, ensure the Controller and the System Remote Control are both network identified (have a network address).
- 6 Program the programmable buttons (Red, Green, Yellow, Blue, *, or #) either based on the selected AV device (for example, Receiver) or the selected room.



Based on AV device (pictured above):

- Select the **System Design** view.
- Select an **AV** device to display the device's Properties page.
- On the device's Properties page, choose **Code** or **Macro** for the button you want to program, and then choose a code or macro from the drop-down list, edit the Help text as needed, and then choose **Set**.



NOTE: Help text describes custom programming to end-users under the House option in any of the Navigators.

For example:

- (1) In System Design view, select **Disc Changer**.
- (2) Under Red button, choose **Code**.
- (3) From the drop-down list, choose **Subtitle**.
- (4) Choose the **Set** button to create a Subtitle button.

Based on room:

- Select the **Programming** view.
- Select a room in the Device Events pane.
- Select the **Commands** radio button in the [Room] Events pane.
- Use the drop-down menu to select a command or button (such as “Blue Button”).
- Build the script using items from the Actions pane to program the actions desired in the selected room when you select the command or button.

For more information about programming, see the *Composer Pro User Guide*.

Warranty

For complete warranty information, including details on consumer legal rights as well as warranty exclusions, visit www.control4.com/warranty.

Recycling

For information on recycling, please go to www.control4.com/recycling.



About this Document

Part Number: 200-00226 Rev B 6/6/2011

