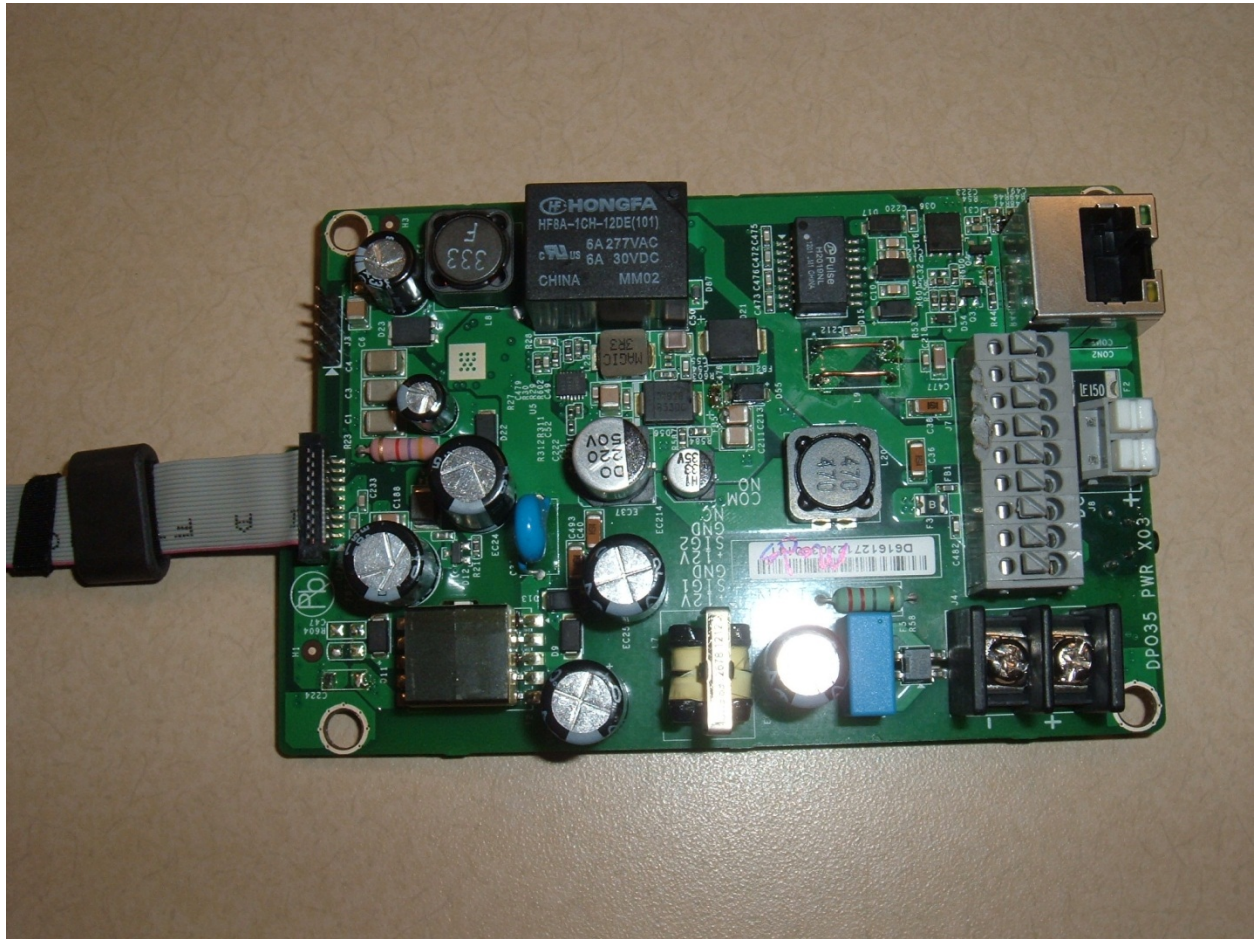


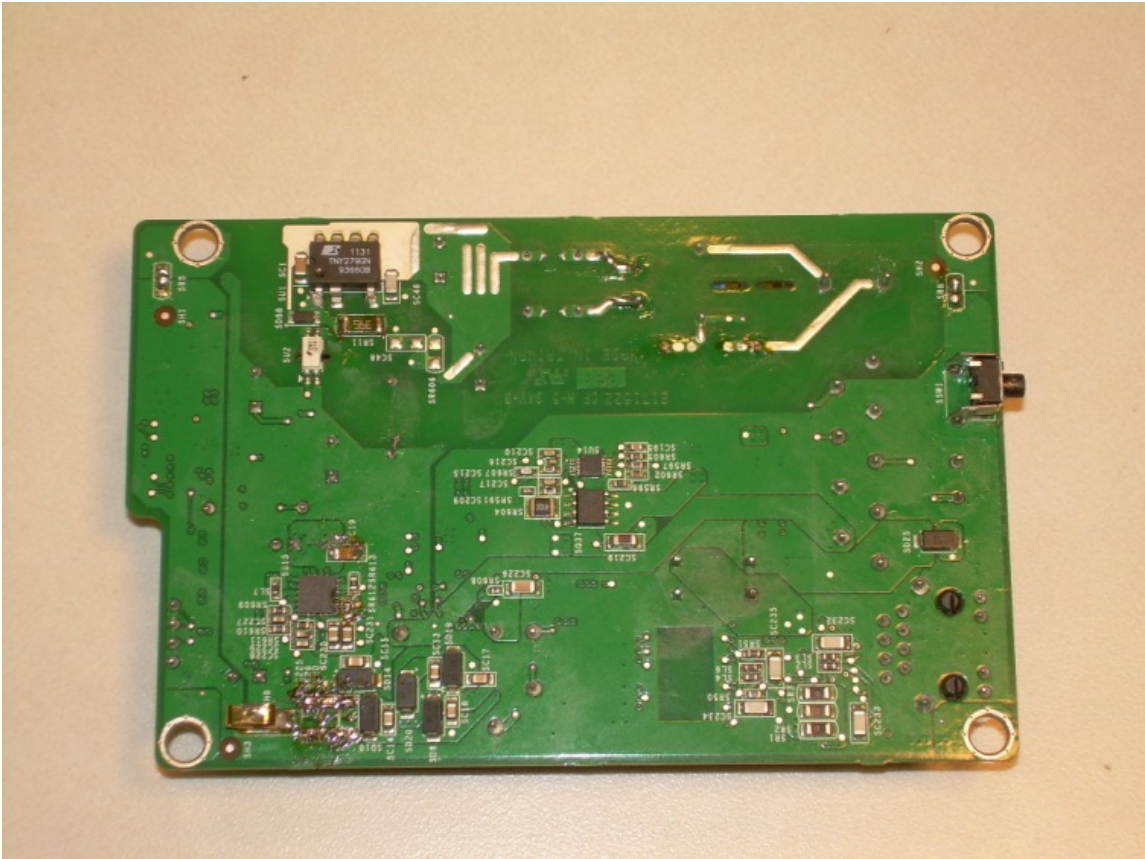
View of the EUT Inside Back Housing Showing the Power PCB Placement



View of the Component Side of the Power PCB



View of the Trace Side of the Power PCB



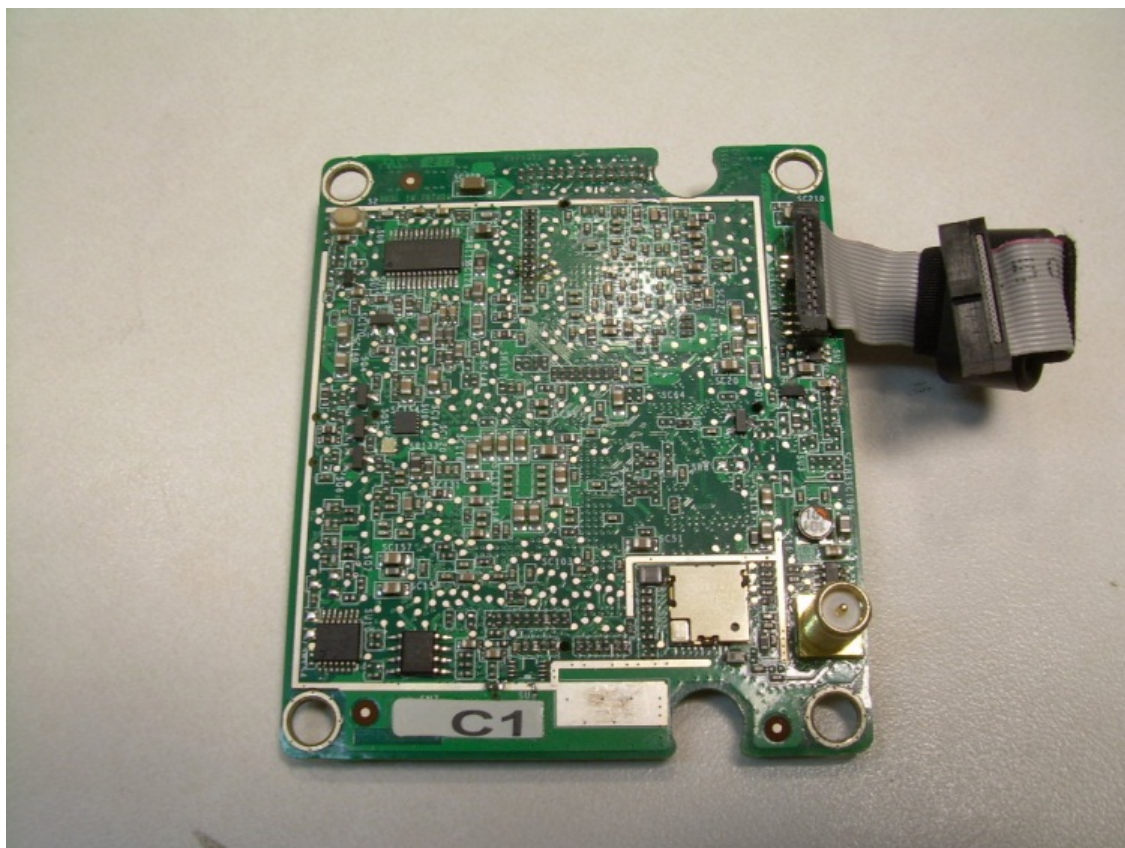
View of the Front EUT Housing Showing Main/RF PCB and Switch PCB



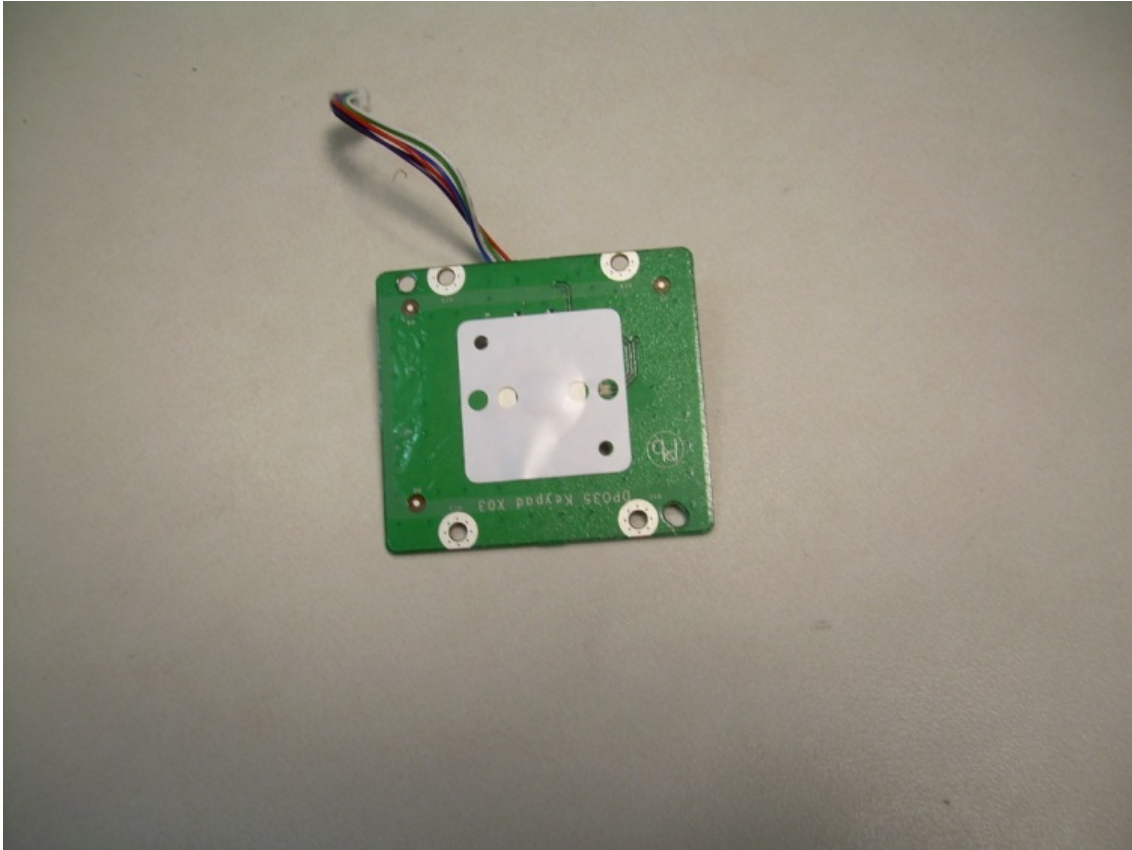
View of the Component Side of the Main/RF PCB



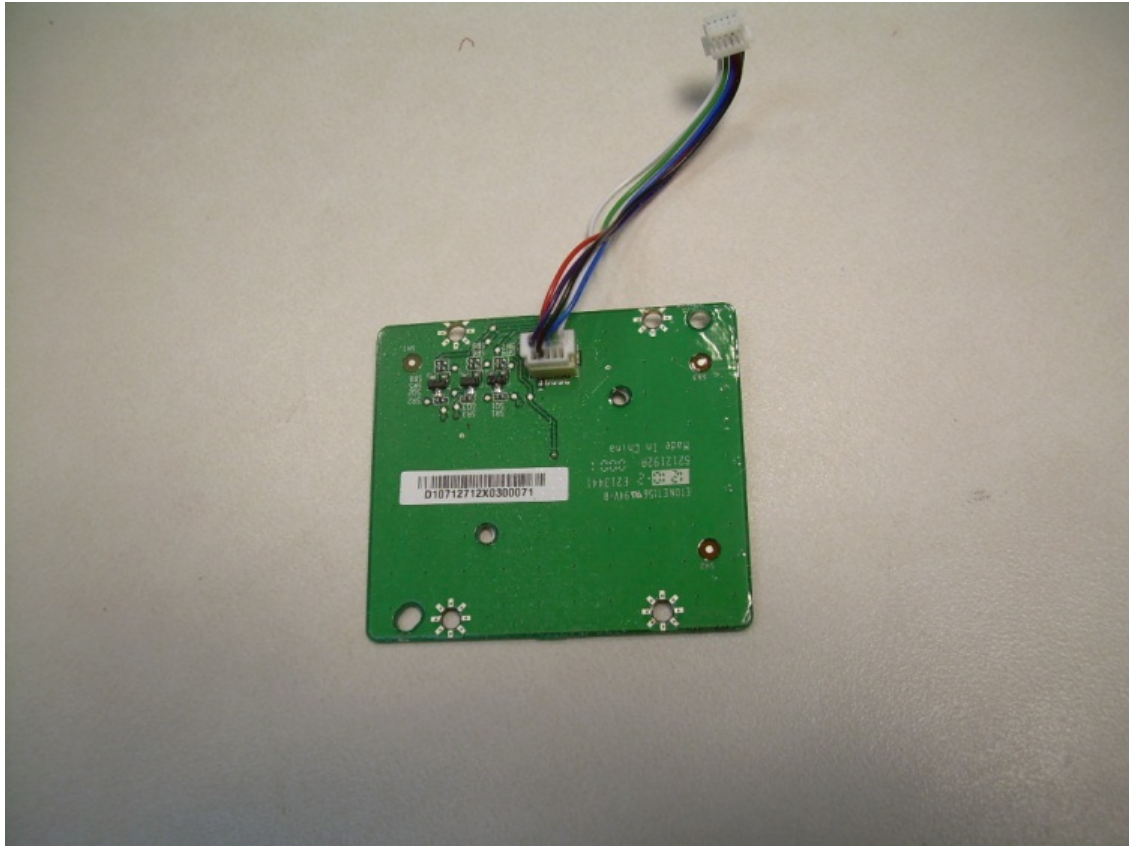
View of the Trace Side of the Main/RF PCB



View of the Switch Side of the LED/Switch PCB

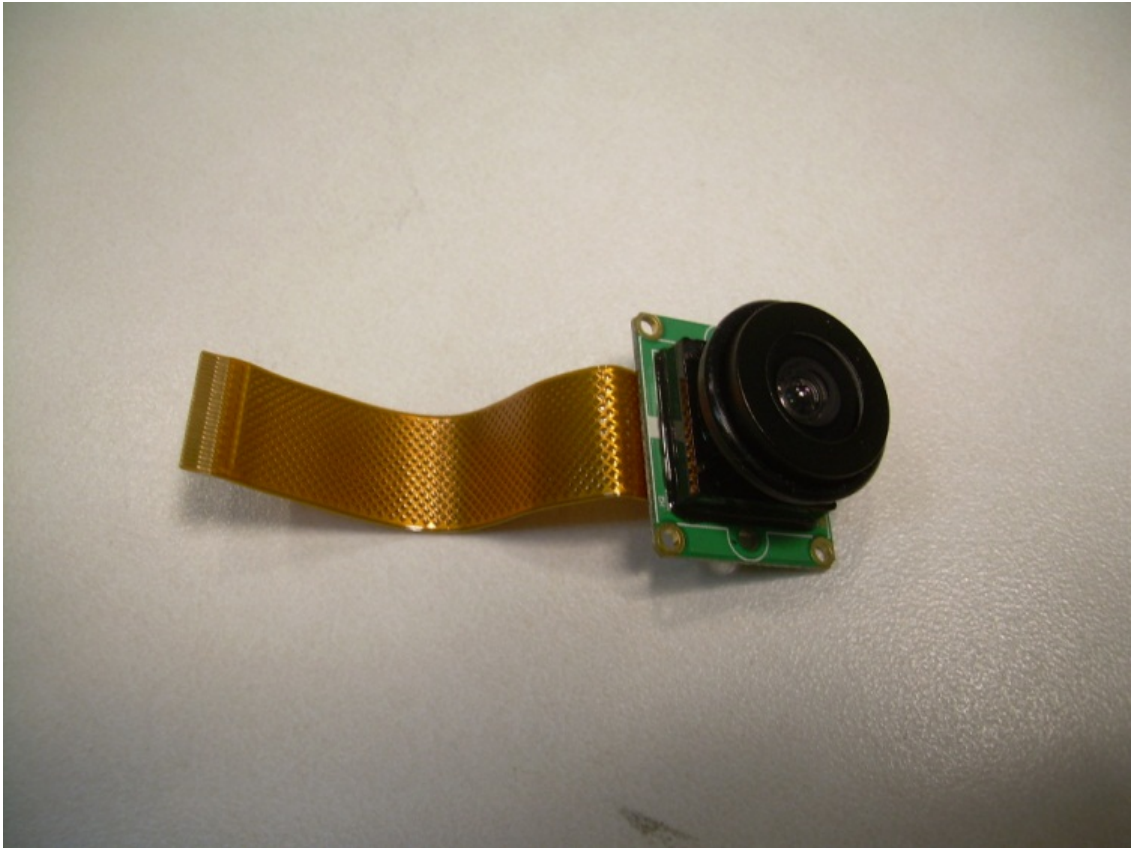


View of the Trace Side of the LED/Switch PCB

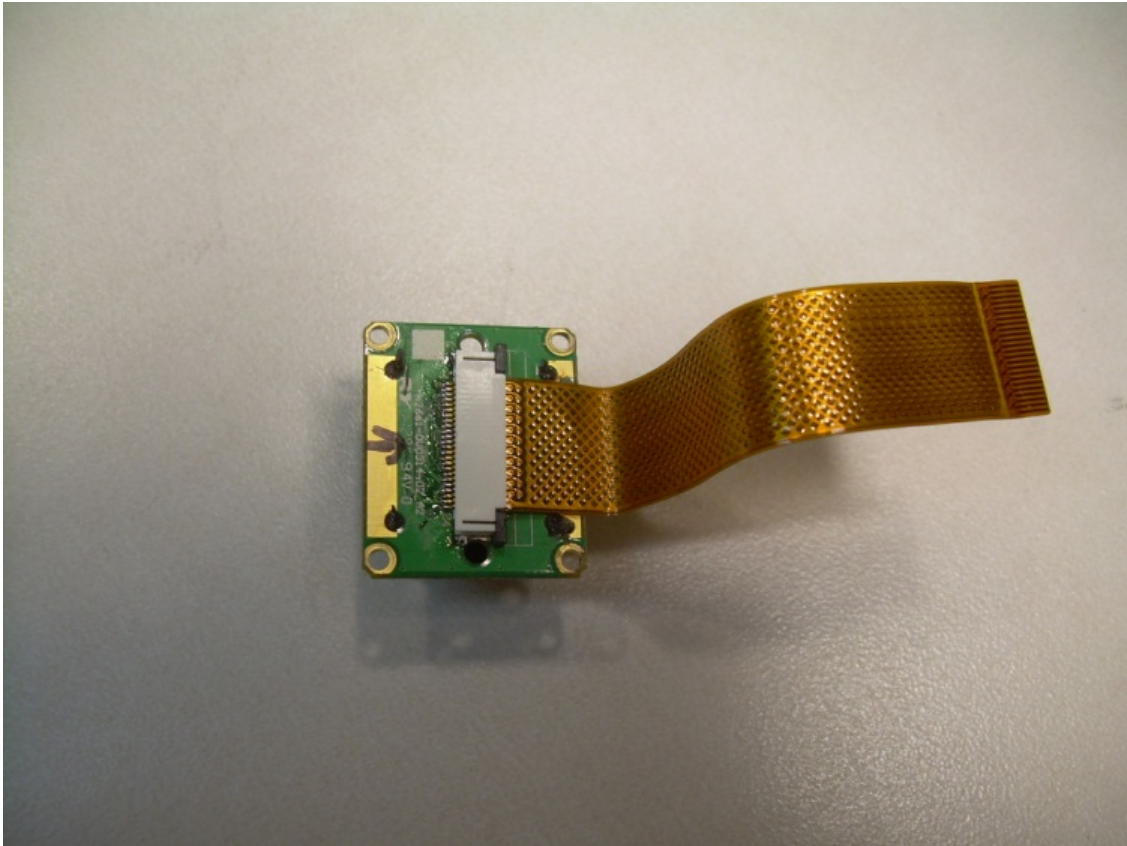




View of the Imager Side of the Camera PCB



View of the Trace Side of the Camera PCB



View of the Sleeve Antenna



View of the Patch Antenna

