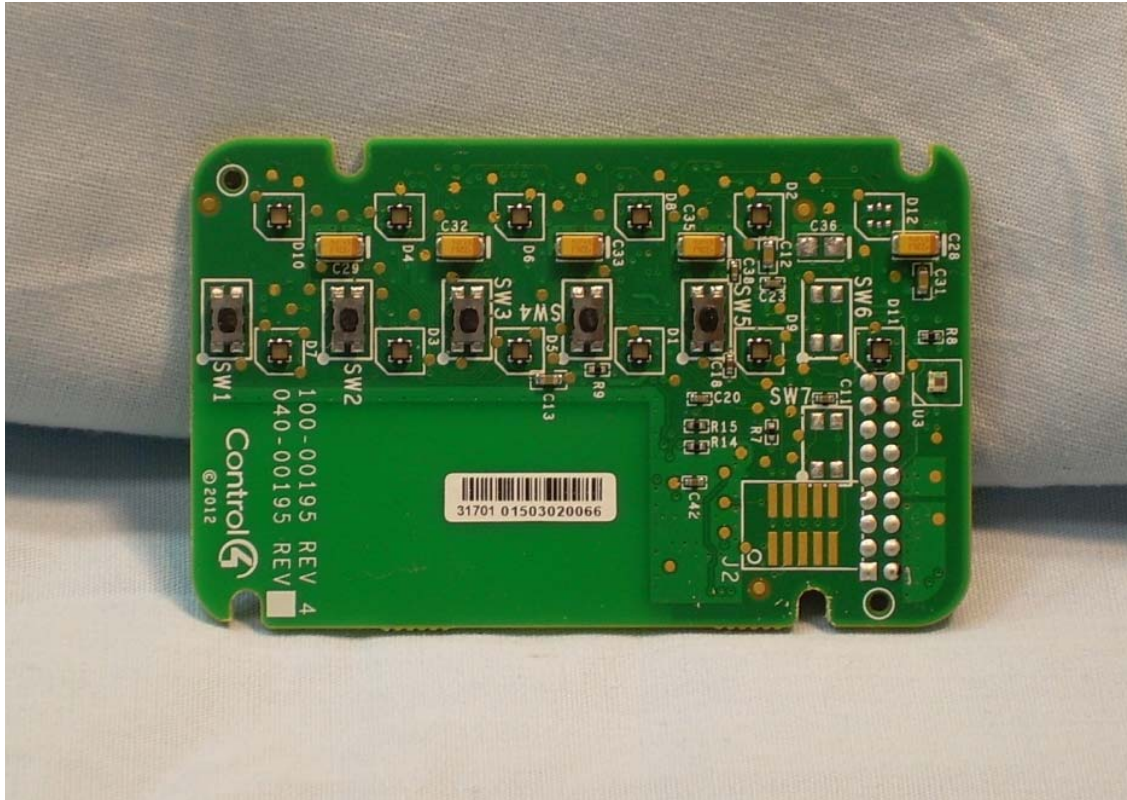
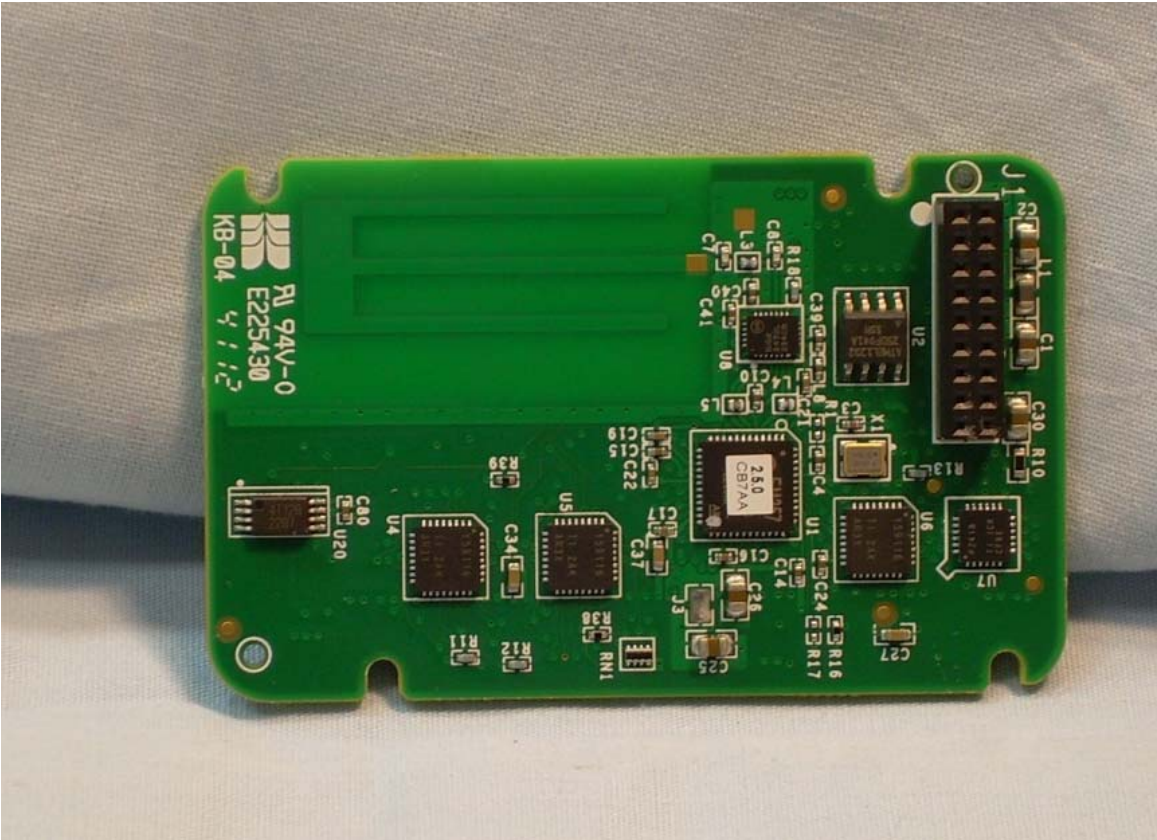


Front View of the RF/Switch PCB

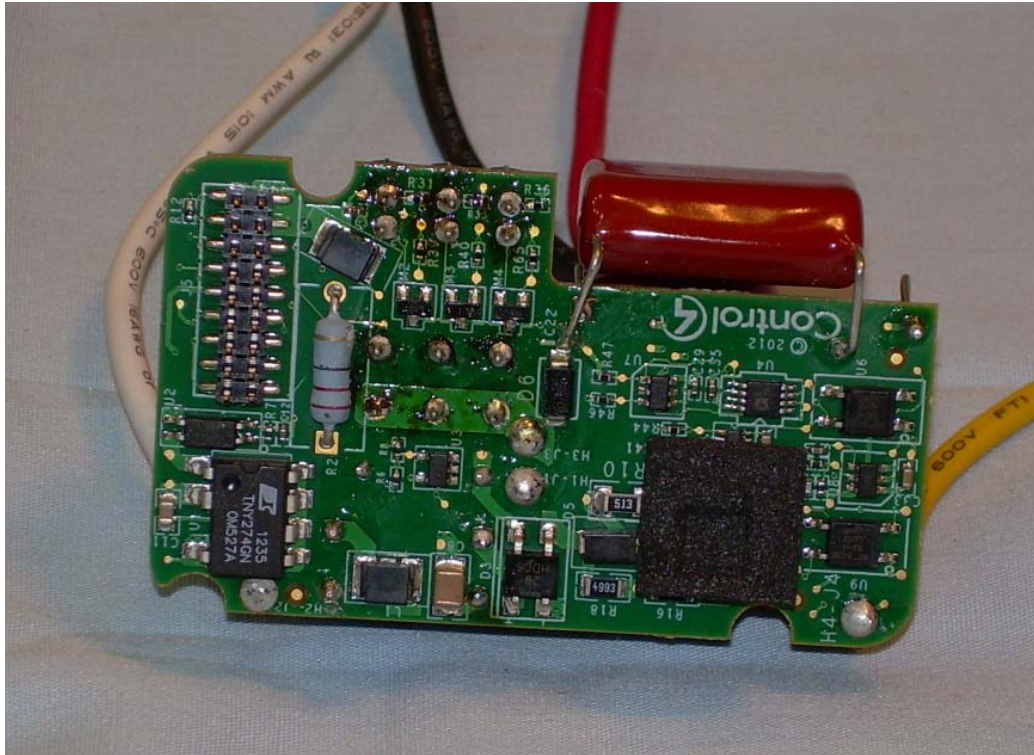


The image shows the reverse side of a green PCB, likely a baseband or logic board for a mobile phone. Key components and labels include:

- Connectors:** A large multi-pin connector at the top (J1) and a smaller one at the bottom (J2).
- ICs:** Several integrated circuits are visible, including a large one labeled 'U1' (likely a baseband processor) and others labeled 'U2', 'U3', 'U4', 'U5', 'U6', and 'U7'.
- Passives:** Numerous capacitors (C1, C2, C3, C4, C5, C6, C7, C8, C9, C10, C11, C12, C13, C14, C15, C16, C17, C18, C19, C20, C21, C22, C23, C24, C25, C26, C27, C28, C29, C30, C31, C32, C33, C34, C35, C36, C37, C38, C39, C40, C41, C42, C43, C44, C45, C46, C47, C48, C49, C50, C51, C52, C53, C54, C55, C56, C57, C58, C59, C60, C61, C62, C63, C64, C65, C66, C67, C68, C69, C70, C71, C72, C73, C74, C75, C76, C77, C78, C79, C80, C81, C82, C83, C84, C85, C86, C87, C88, C89, C90, C91, C92, C93, C94, C95, C96, C97, C98, C99, C100) and resistors (R1, R2, R3, R4, R5, R6, R7, R8, R9, R10, R11, R12, R13, R14, R15, R16, R17, R18, R19, R20, R21, R22, R23, R24, R25, R26, R27, R28, R29, R30, R31, R32, R33, R34, R35, R36, R37, R38, R39, R40, R41, R42, R43, R44, R45, R46, R47, R48, R49, R50, R51, R52, R53, R54, R55, R56, R57, R58, R59, R60, R61, R62, R63, R64, R65, R66, R67, R68, R69, R70, R71, R72, R73, R74, R75, R76, R77, R78, R79, R80, R81, R82, R83, R84, R85, R86, R87, R88, R89, R90, R91, R92, R93, R94, R95, R96, R97, R98, R99, R100) are scattered across the board.
- Label:** A white label on the left side contains the text 'KB-04', '94V-0', and 'E225430'.



Front View of the Power Supply/Load PCB



Back View of the Power Supply/Load PCB

