

Internal Photographs

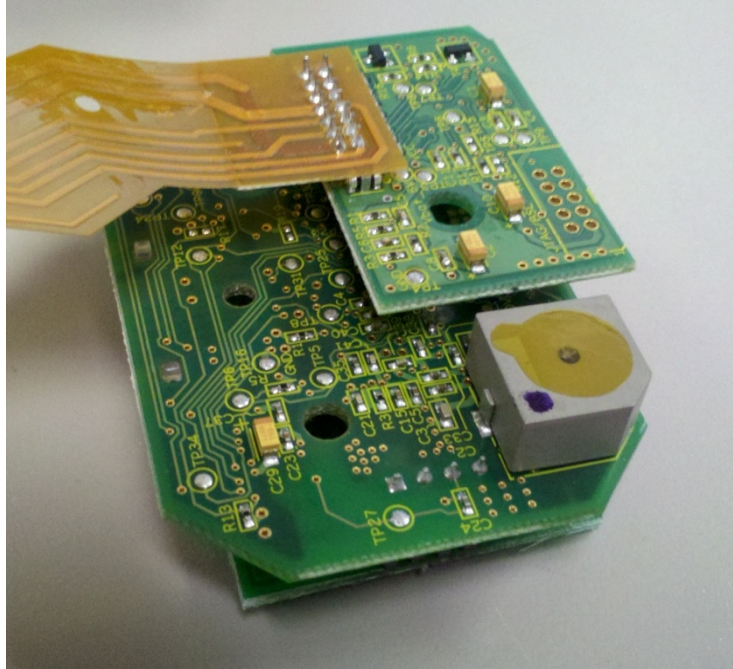


Photo 1. Translation Board and Reader Board



Photo 2. Antenna board



Photo 3. PCB Stack



Photo 4. Antenna Board, Sensor Side



Photo 5. Antenna Board, Antenna Side

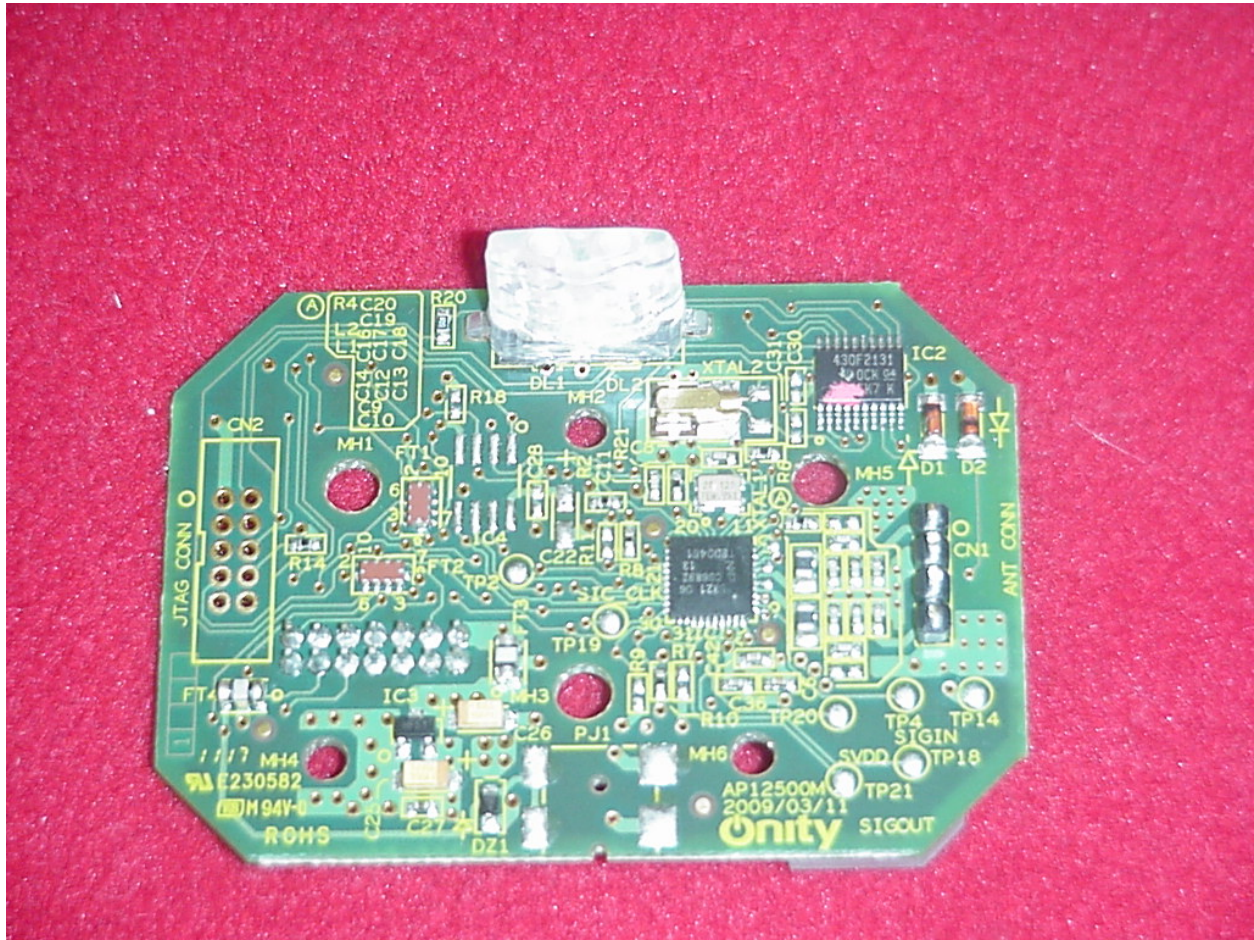


Photo 6. Main Board, (Mid Board), Component Side

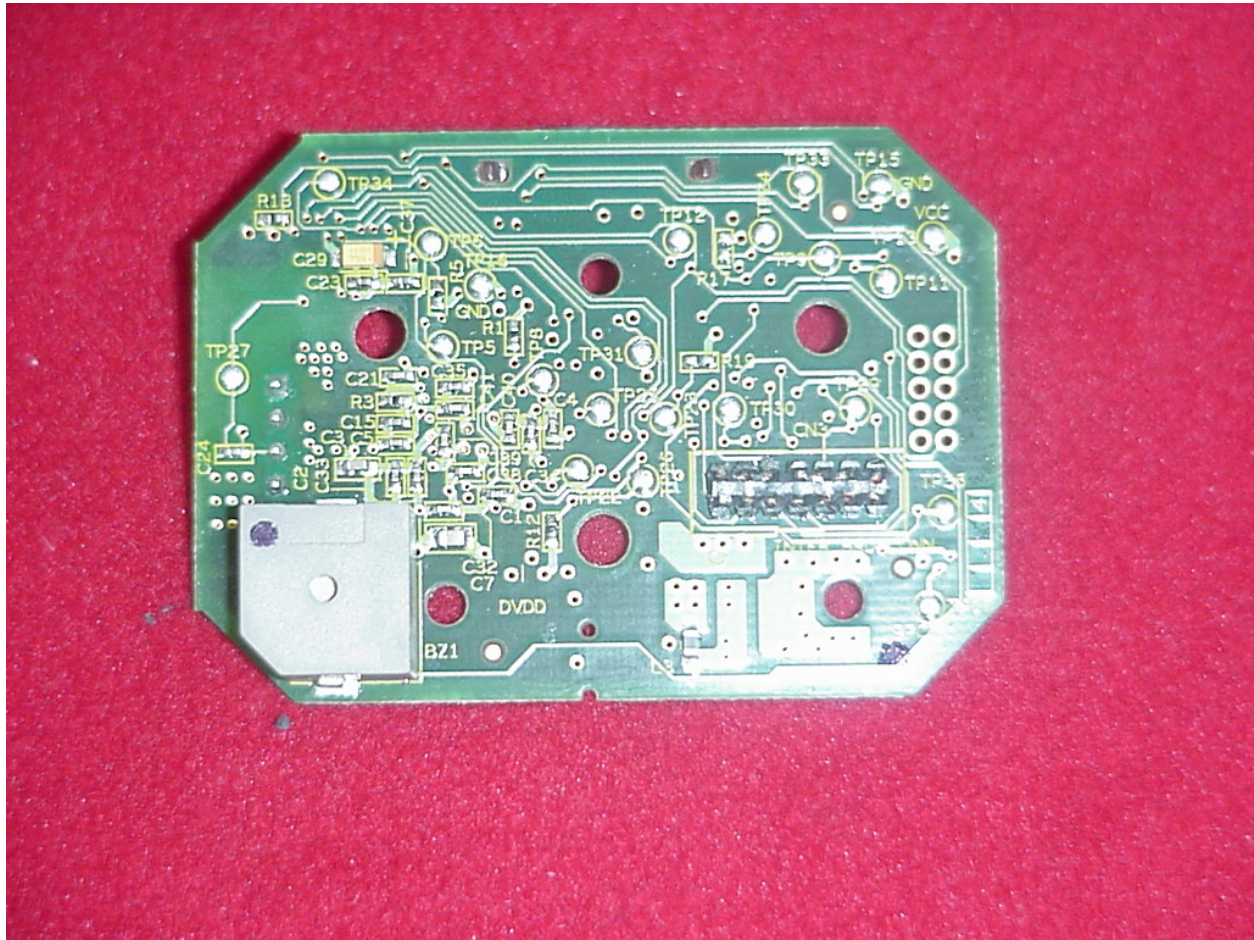


Photo 7. Main Board, (Mid Board), Solder Side

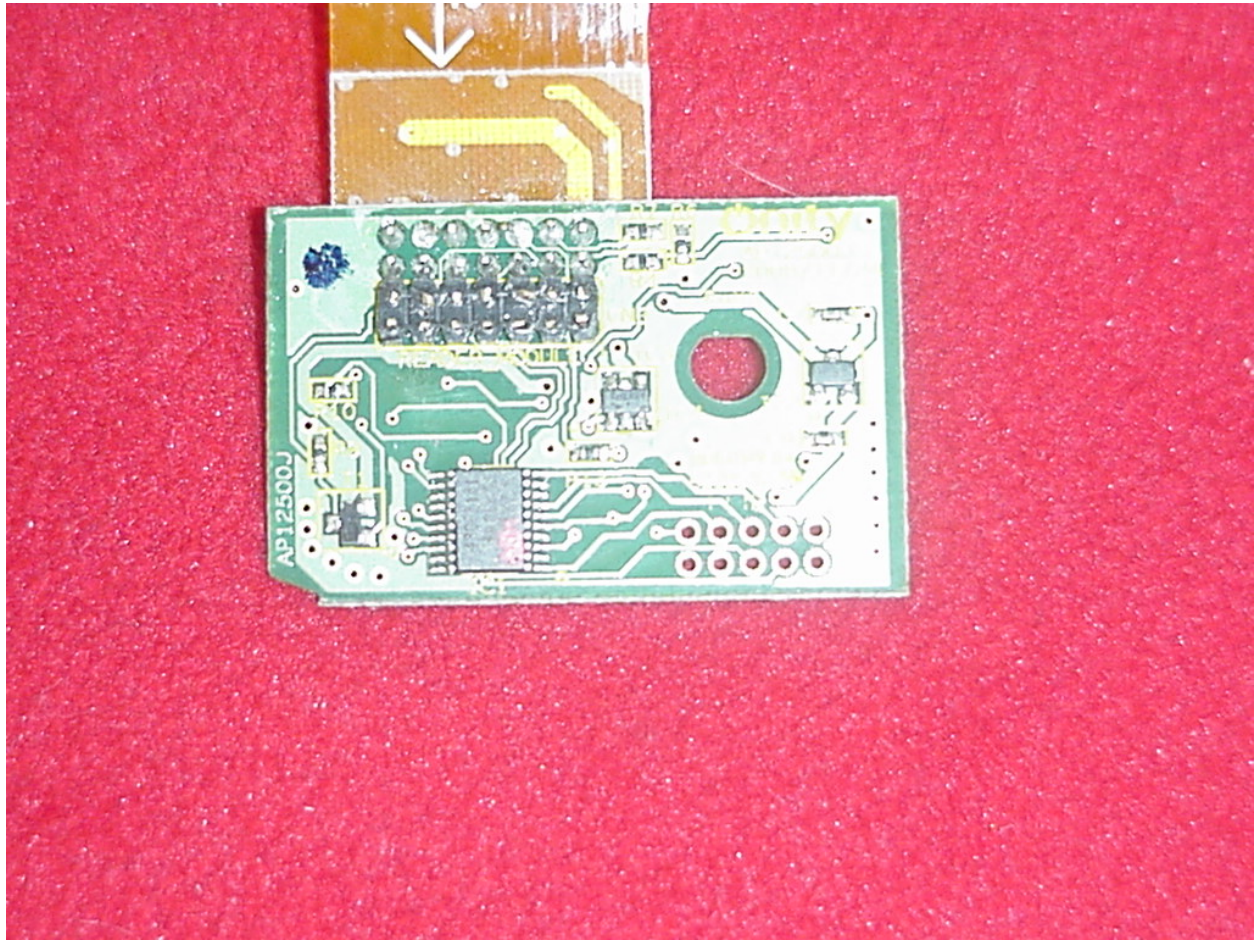


Photo 8. Connector Board, Solder Side

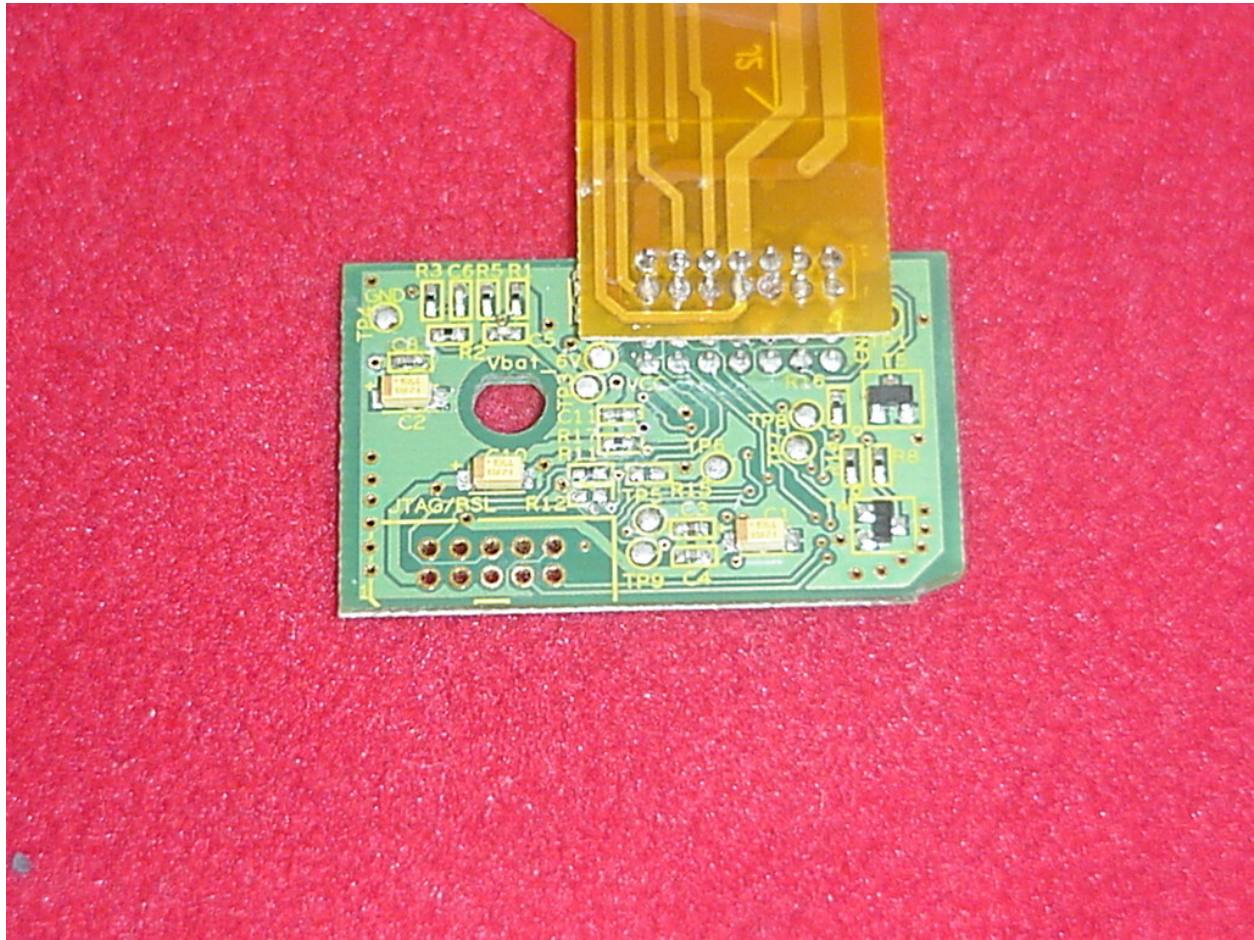


Photo 9. Connector Board, Solder Side