

Internal Photos

The following photos (see Fig 1. and Fig. 2) depict the PCB components found inside the HT34 RFID BTLE's (HT34) assembled RFID read head (RH). Further below, the RH's three solder stacked PCBs are displayed individually (see Fig. 3, Fig. 4, Fig. 5, Fig. 6, Fig. 7 and Fig. 8).



Figure 1. The HT34's assembled RH.



Figure 2. The three PCBs contained inside the HT34's RH.

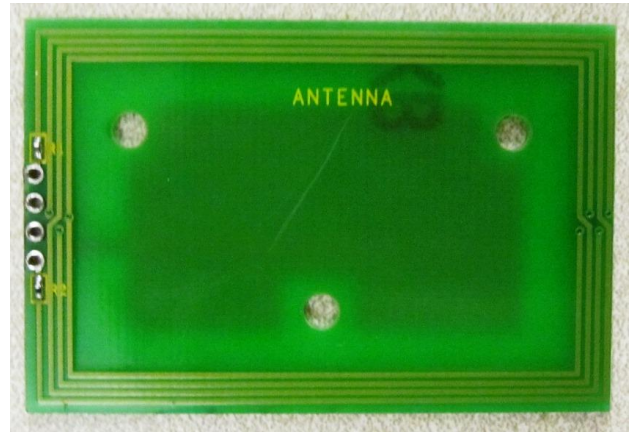


Figure 3. Top view of the RH's antenna PCB.

Figure 4. Bottom view of the RH's antenna PCB.

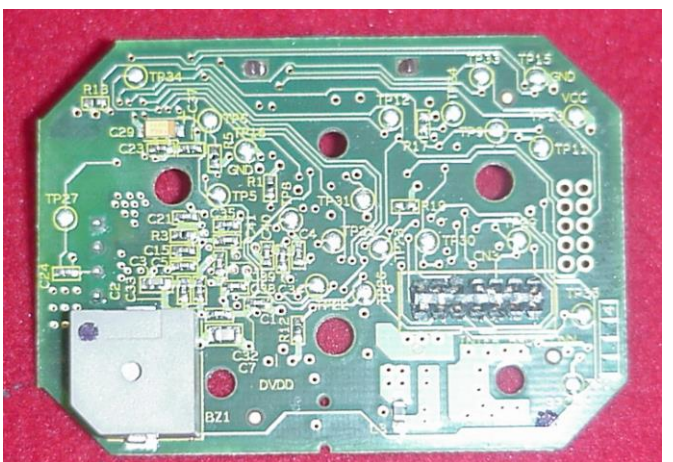


Figure 5. Top view of the RH's RFID reader PCB.

Figure 6. Bottom view of the RH's RFID reader PCB.

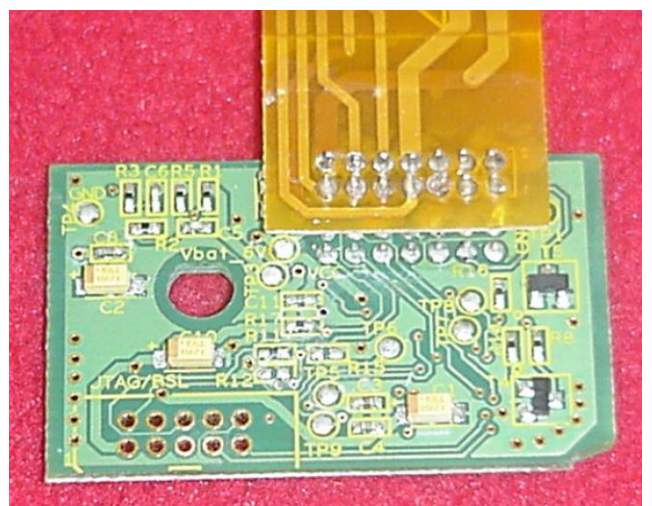
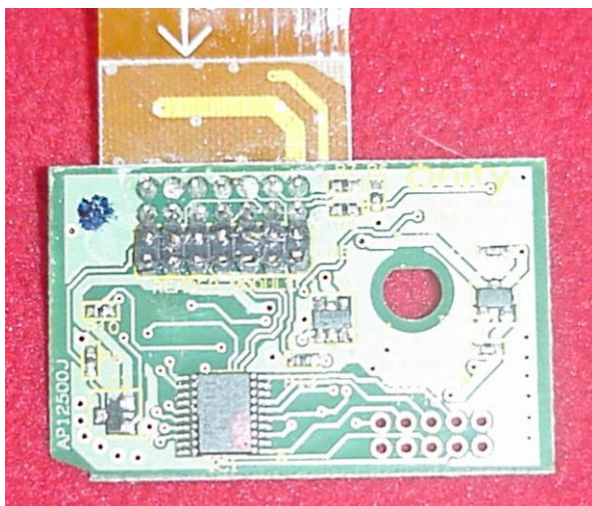


Figure 7. Top view of the RH's translator PCB.

Figure 8. Bottom view of the RH's translator PCB.